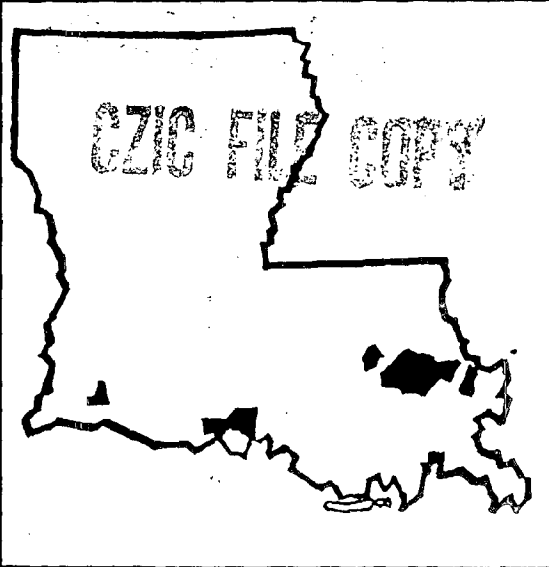


Coastal Zone
Information
Center

VOLUME 3 SIGNIFICANT COASTAL PLANS AND PROJECTS



LOUISIANA COASTAL RESOURCE INVENTORY

PREPARED FOR
THE LOUISIANA STATE
PLANNING OFFICE

BURK & ASSOCIATES, INC.

HT
393
.L8
L687
1975
v.3

AUG 19 1975

Louisiana State Planning Office

ORIGINAL FILE COPY

04992

LOUISIANA COASTAL RESOURCE INVENTORY

VOLUME 3 SIGNIFICANT COASTAL PLANS AND PROJECTS

PREPARED FOR THE LOUISIANA STATE PLANNING OFFICE

JUNE 1975

U.S. DEPARTMENT OF COMMERCE NOAA
COASTAL SERVICES CENTER
2234 SOUTH HOBSON AVENUE
CHARLESTON, SC 29405-2413

Property of CSC Library

HT 393.L8 L687 1975 V.3

MAR 10 1997

PRESIDENT
WILLIAM R. BURK, JR.
EXECUTIVE VICE PRESIDENT
M. F. JACKSON
VICE PRESIDENTS
WILLIAM R. BURK, III
THOMAS L. JACKSON
JAMES W. ARMBRUSTER
H. DOUGLAS LOWREY
JEAN H. BURK

BURK & ASSOCIATES, INC.
ENGINEERS
4176 CANAL STREET
NEW ORLEANS 70119

ASSOCIATES
DANIEL A. FONTANA
GEORGE C. KLEINPETER, JR.
JENS J. NIELSEN
JOSEPH H. PRANGE, JR.
ROBERT E. RICE

June 30, 1975

Mr. Patrick W. Ryan
Executive Director
Louisiana State Planning Office
P. O. Box 44425
Baton Rouge, Louisiana 70804

Dear Mr. Ryan:

We are happy to submit a 4-volume report which is our contribution to the first year's effort in the developing Louisiana Coastal Resources Program.

This report addresses three aspects of that developing program. It consists of four volumes, involving three separate work tasks. Volume 1 provides an inventory of geographic areas of particular concern which have recreational, historical, cultural, archeological and developmental significance. In Volume 2, methods of assessing environmental impact are reviewed and the existing "state of the art" in Louisiana today is described. Volume 3 consists of an analysis of completed, under construction and proposed projects which may have a significant impact on the coastal area. Volume 4 includes 7 maps which locate areas of particular concern and public projects listed in Volumes 1 and 3.

We have always felt that the Louisiana coast is a unique and vital region due to its abundance of both renewable and non-renewable resources. The coastal ecosystem supports many and varied uses which provide the economic base of South Louisiana. At the same time, use of the coast's resources should not exceed the point where it seriously reduces its phenomenal productivity. Hopefully, the Coastal Resources Program will enable maximum utilization of the coast's vast resources, while at the same time protecting and conserving those areas most vital to the natural system.

We hope we have contributed in the development of a process to reach this goal. Pinpointing areas of concern and locating development projects should help in delineating potential areas of conflict.

BURK & ASSOCIATES, INC.

- 2 -

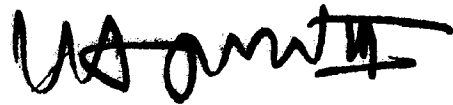
Mr. Patrick W. Ryan, Executive Director
Louisiana State Planning Office

June 30, 1975

We have enjoyed our association with your staff and look forward to being of service in the continuing development of this vital program.

Respectfully submitted,

BURK & ASSOCIATES, INC.
Engineers



William R. Burk, III
Vice President

WRB III/ac



ACKNOWLEDGEMENTS

LOUISIANA STATE PLANNING OFFICE

EDWIN EDWARDS	GOVERNOR OF LOUISIANA
PATRICK W. RYAN	EXECUTIVE DIRECTOR
PAUL R. MAYER	ASSISTANT DIRECTOR
JOHN M. BORDELON	INTERIM PROJECT COORDINATOR
PAUL H. TEMPLET	PROJECT COORDINATOR
JOEL L. LINDSEY	PUBLIC PARTICIPATION COORDINATOR

STUDY MANAGEMENT TEAM

PATRICK W. RYAN	LOUISIANA OFFICE OF STATE PLANNING
LYLE S. ST. AMANT	LOUISIANA WILDLIFE AND FISHERIES COMMISSION
VERNON F. BEHRHORST	LOUISIANA COASTAL COMMISSION
JACK R. VAN LOPIK	LOUISIANA SEA GRANT PROGRAM

TABLE OF CONTENTS

	Page
INTRODUCTION	2
MASTER INVENTORY	6
GENERAL CRITERIA	7
CATEGORIES OF PROJECT SPONSORS INVENTORIED	9
SUMMARY	33
SOURCES OF INFORMATION	
References	34
Maps	35
Interviews.	35
APPENDIX A	
Inventory of Relevant Federal Agencies	A-1
APPENDIX B	
Inventory of Relevant State Agencies	B-1
APPENDIX C	
Inventory of Relevant Regional Agencies	C
APPENDIX D	
Inventory of Relevant Metropolitan Planning Agencies	D
APPENDIX E	
Typical "Project Profile"	E



HIGHWAY TRAVERSING A COASTAL WETLAND

INTRODUCTION

Since the National Environmental Policy Act of 1969, concerned government has attempted to measure the impact of various construction projects on human habitation and quality of life in general. The objective has been to minimize adverse effects and maximize positive gains in order to, if not improve, at least maintain the present quality of the natural and man-made environment.

As these projects were analyzed, a need arose to view them in an ever-increasingly larger context. Often, projects crossed judicial boundaries influencing a greater and greater group of interest. Government has been charged with perhaps the greatest challenge; protecting the rights of these various and often conflicting interests.

It is towards this end that Task III-B, of the Louisiana Coastal Resources Study Program was directed. A methodology has been developed which will allow coastal managers to examine many of the projects in the coastal region and, at a glance, extract pertinent information and relationships.

OVERLAYS

Information has been presented in two forms; maps and textual data, both of which are compatible to computerization. Visual displays output which accompany these four volumes consist of a base map and three overlays depicting project locations, sponsors, and status. For the first time in Louisiana, major multiple agency projects paid for by public funds are presented in one context. While geographic relationships are obvious,

the more subtle relationships can be ascertained by overlaying the projects with recreational, historical, or other visual data associated with Volume 1 of this report. This should prove to be a valuable tool for illustrating the potential conflicts between projects and areas of particular concern.

Similar overlay type analysis will yield much of the basic available information necessary to perform a project impact assessment as described in Volume 2. Volume 3, Significant Coastal Plans and Projects, has accomplished the first step towards cumulative impact assessment by identifying projects which are in geographic proximity to each other. This information is presented again in Volume 4, but without the detail or overlaying capabilities of the originals. The original map and overlays provide more detail at a larger scale (1:250,000).

PROJECT PROFILES

"Project Profiles" are designed to supplement map and overlay information offering quick manual retrieval of selected data in concentrated form. These 8½ by 11-inch data cards are easily updated as more information becomes available. It is intended that all known projects (complete, under construction, and proposed) be profiled in this system. Profiles have been initially arranged by sponsor and a number corresponding with the "Master Inventory". They can be sorted and arranged according to any one of several categories. A typical example of a profile, E-2-35, is illustrated in Appendix "E" of this volume. Coastal Resource Program "Profiles" come complete with one posting tray, indexes, and the necessary cards for those completed in FY'75.

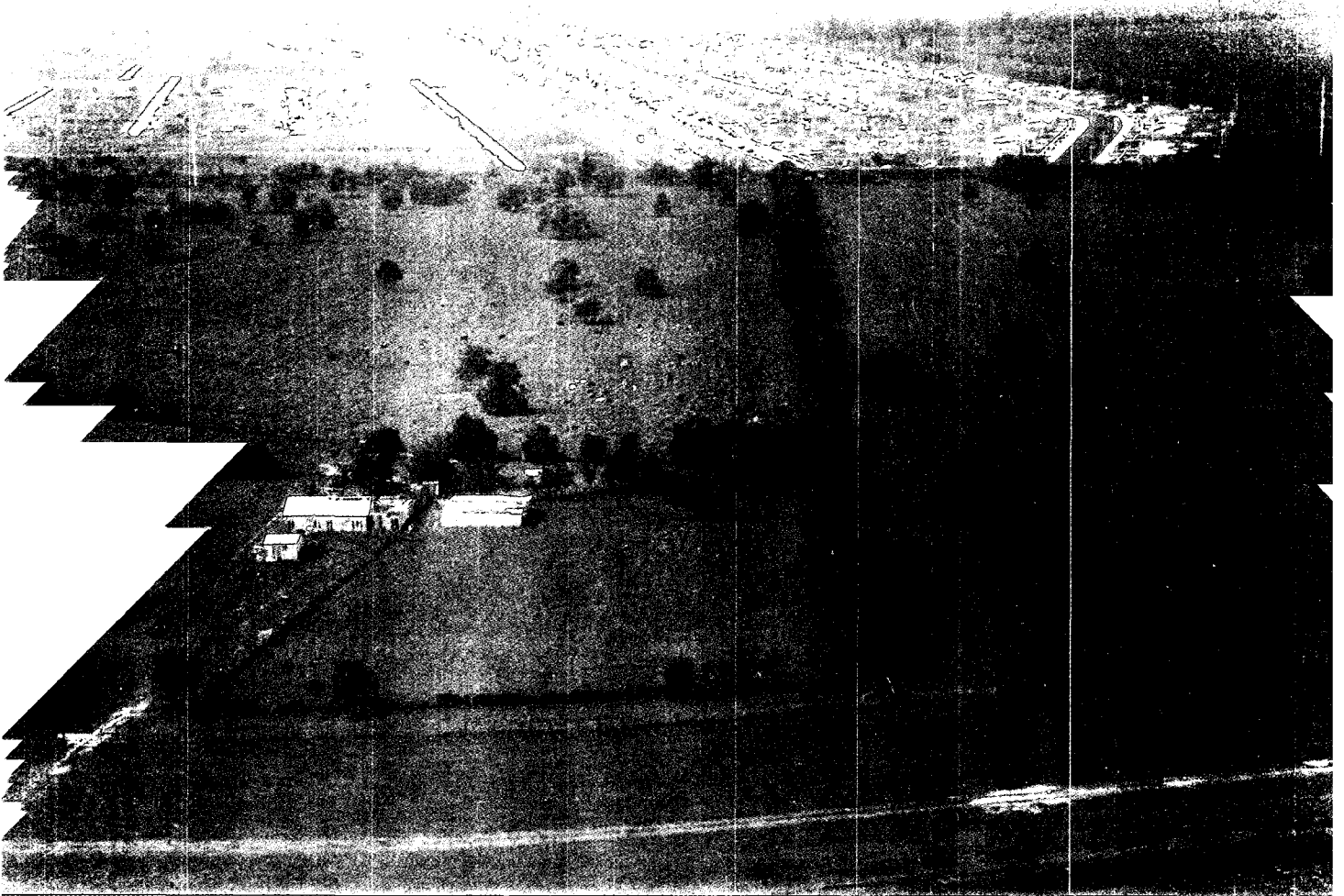
MASTER INVENTORY

The "master inventory" is a temporary construct designed to initially list all commonly known, non-oil, industry-related projects affecting Louisiana's Coastal Resources. No attempt has been made at this time to indicate significance of these projects. They are listed merely as a point of departure for future study. Many of these projects can be profiled in the FY '76 work effort.

APPENDICES

Appendices A through D have been prepared to describe various levels of governmental agencies having some influence on Louisiana's coastal resources either directly or indirectly. They serve as an indication of where source information is available and general agency objectives. As is the case of the master inventory, the greatest value of the Appendix is in establishing a point of departure for work involving intergovernmental relationships. Appendix E illustrates a typical "profile" card.

URBAN GROWTH IN RURAL AREAS



MASTER INVENTORY

GENERAL CRITERIA

While developing criteria that could be used to select particular projects for inclusion in a program that would "keep regularly appraised of changes, updates, and amendments"*, certain difficulties arose. Such a project would have to significantly affect coastal resources. Significant impact is defined as an action which brings about a measurable change or otherwise modifies existing conditions in the coastal area. The Federal Highway Administration defines "an action significantly affecting the quality of the human environment" to be an action in which the overall cumulative primary and secondary consequences significantly alter the quality of the human environment, curtail the choices of beneficial uses of the human environment, or interfere with the attainment of long-range human environmental goals. Since existing qualities and conditions in the coastal areas have not been established as a "bench mark", selections of projects, plans, goals, objectives, and policies having significant impact will be subject to interpretation. Therefore, a working definition was used, allowing any non-maintenance projects to be inventoried.

Projects are presented in three forms: maps and overlays, profiles, and master inventory.

A. Overlays of Major Public Non-Maintenance Projects.

Three overlays were developed to indicate the locations of public, non-maintenance projects in the coastal area. These overlays can be used with the other overlays developed during this project.

Overlay No. 1, "Completed Projects", shows the locations of:

1. All U.S. Army Corps of Engineers projects.
2. Major new highway projects completed since 1969 except interstate highways.

3. All interstate highways .
4. U.S. Soil Conservation Service Project Areas.
5. Existing airports and water ports .

Overlay No. 2, "Projects Under Construction", includes:

1. All U.S. Army Corps of Engineers projects .
2. All new highway projects under construction and such selected modification projects as bridges , interchanges , and widening of roads to four lanes .
3. U.S. Soil Conservation Service Project Areas .

Overlay No. 3, "Proposed Projects", includes:

1. All U.S. Army Corps of Engineers authorized projects .
2. Major proposed new highways and bridges ,
3. Authorized Soil Conservation Service projects .

B. Project Profiles

Two categories of projects are presented in the project profiles. In the first category are projects from the Corps of Engineers' New Orleans, Galveston, and Mobile Districts which are located in Louisiana's Coastal Zone. The second category includes U.S. Soil Conservation Service projects in Louisiana's Coastal Zone. With the exception of a few projects for which sufficient data was not available, all SCS projects mapped have project profiles.

C. Master Inventory

The Master Inventory is a list of the seven categories of projects in Louisiana. The seven categories of projects are those of the U.S. Army Corps of Engineers, the U.S. Soil Conservation Service, the Louisiana Department of Public Works, the Louisiana Department of Highways, Federal Studies in Louisiana, Sub-State and Quasi-Public, and Private Developments. The projects were divided into three general categories: completed(c), under construction(u), and proposed(p).

Major public projects were included whenever information on them was readily available. The private developments included were those which are commonly known. The projects listed under Federal studies are those which have a significant effect on Louisiana coastal areas.

* From Task Description as described in Federal-State Application for Coastal Zone Management Grant, FY '75.

CATEGORIES OF PROJECT SPONSORS INVENTORIED

<u>Symbol</u>	<u>Name of Sponsor</u>	<u>Master Inventory</u>	<u>Mapped on Overlays</u>	<u>Profiles</u>
E	U.S. Army Corps of Engineers	x	x	x
S	U.S. Soil Conservation Service	x	x	x
W	Louisiana Department of Public Works	x	-	-
Q	Sub-State and Quasi-Public	x	-	-
Pr	Private Developments	x	-	-
F	Federal Studies in Louisiana	x	-	-
H	Louisiana Department of Highways	x	x	-

U.S. ARMY CORPS OF ENGINEERS (E)

<u>Project No.</u>	<u>Name</u>	<u>Status</u>
E-1-5 *	Lake Charles Deep Water Channel	C
E-1-6	Vinton Waterway	P
E-1-7 (1)	Calcasieu River and Pass	C
E-1-7 (2)	Calcasieu River Salt Water Barrier	C
E-1-7 (3)	Calcasieu River at Devil's Elbow	P
E-1-8	Gulf Intracoastal Waterway between Apalachee Bay, Fla., and the Mexican Border	U
E-1-9	Mermentau River, Bayous Nezpique and des Cannes	U
E-1-10	Bayou Plaquemine Brule'	C
E-1-11	Bayou Queue de Tortue	C
E-1-12	The Inland Waterway, Franklin to Mermentau	C
E-1-13	Bayou Vermilion	C
E-1-14	Petit Anse, Tigre and Carlin Bayous	C
E-1-15	Bayou Teche	U
E-1-16	Bayou Grosse Tete	C
E-1-18	Atchafalaya River, Morgan City to the Gulf	C
E-1-19 (1)	Mississippi River, Baton Rouge to the Gulf of Mexico	C
E-1-19 (2) a	Mississippi River - Gulf Outlet	C
E-1-19 (2) b	Ship Barge Lock Feature of the Mississippi River - Gulf Outlet Project	P
E-1-20	Amite River and Bayou Manchac	C
E-1-21	Waterway from the Intracoastal Waterway to Bayou Dulac	C
E-1-22	Little Caillou Bayou	C
E-1-23	Bayou Terrebonne	C
E-1-24	Bayou Lafourche and Lafourche - Jump	P
E-1-25	Intracoastal Waterway (5' x 40'), Mississippi River to Bayou Teche	C
E-1-26	Tickfaw, Natalbany, Ponchatoula and Blood Rivers	C
E-1-27	Pass Manchac	C
E-1-28	Tangipahoa River	C
E-1-29	Tchefuncte River and Bogue Falaya	C
E-1-30	Bayou Lacombe	C
E-1-31	Bayou Bonfouca	C
E-1-32	Bayou Dupre	C
E-1-33	Bayous LaLoutre, St. Malo and Yscloskey	C
E-1-34	Houma Navigational Canal	C
E-1-35	Grand Bayou Pass	C
E-1-36	Waterway from Empire to the Gulf of Mexico	C
E-1-38	Bayou Segnette Waterway	U
E-1-39	Bayou Teche and Vermilion River	C

* Official Corps of Engineers Project Numbers have been used where possible.

<u>Project No.</u>	<u>Name</u>	<u>Status</u>
E-1-40	Mermentau River	C
E-1-41	Barataria Bay Waterway	C
E-1-43	Freshwater Bayou	C
E-1-44	Berwick Bay Bridge, Truman-Hobbs Act	U
E-1-45	Vermillion Lock	P
E-1-46	Atchafalaya River, Bayous Chene, Boeuf, and Black	P
E-1-47	Mississippi River Outlets, Venice	P
E-1-48	Michoud Canal	U
E-1-49	Small River and Harbor Projects - Tangipahoa River	C
E-2-2 (a)	Snagging, clearing and channel straightening and small flood control projects (Bayou Choupique, Bayou L'Eau Bleu, Natalbany River, Tickfaw River, Yellow Water River, Ponchatoula Creek, Selser's Creek, Bayou Francois, New River, Bayou Vincent)	C
E-2-2 (b)	Snagging, clearing, and channel straightening (Choc- taw Bayou and tributaries)	U
E-2-30	Amite River and tributaries	C
E-2-32	New Orleans to Venice (Hurricane Protection)	U
E-2-34	Grand Isle and Vicinity, Hurricane Protection	P
E-2-35 (a)	Lake Pontchartrain and Vicintly, Hurricane Protection	C
E-2-35 (b)	Lake Pontchartrain and Vicinity, Hurricane Protection	U
E-2-35 (c)	Lake Pontchartrain and Vicinity, Hurricane Protection	P
E-2-36	Morgan City and Vicintly, Hurricane Protection	P
E-2-37	Harvey Canal - Bayou Barataria Levee, Jefferson	P
E-3-4 (1)a	Atchafalaya Basin Floodway	C
E-3-4 (1)b	Atchafalaya Basin Floodway	U
E-3-4 (1)c	Atchafalaya Basin Floodway	P
E-3-4 (2)	Atchafalaya Basin Floodway, Interior Drainage Works West of Berwick	U
E-3-4 (3)	Drainage (Charenton Canal)	U
E-3-5 (A)	Atchafalaya River Main and Bas'n Improvement Dredging, Main Channel	C
E-3-6	Teche - Vermillion Basins (Water Supply)	P
E-3-8	Baton Rouge Harbor (Devil's Swamp)	U
E-3-12	Bonnet Carre' Spillway	C
E-3-13	Lake Pontchartrain	C
E-N	Bayou Barataria Waterway from Lafitte to GIWW	P
E-M D	West Pearl River, Dredging and snagging	C
E-G D	Sabine - Neches Waterway	C
E-F D	Sabine Water Diversion Canal from Toledo Bend Reservoir to be completed September, 1976	U

U.S. SOIL CONSERVATION SERVICE (S)

<u>Project No.</u>	<u>Name</u>	<u>Status</u>
S-1	Baker Canal	C
S-2	Bayou Blue	C
S-3	Bayou Folse	U
S-4	Seventh Ward Canal	C
S-5	Lower Bayou Teche	U
S-6	Upper Bayou Teche	U
S-7	Cameron-Creole	U
S-8	Bayou Plaquemine Brule	P
S-9	Panama Canal and Conway Bayou	C
S-10	Bayou Mallet	P
S-11	Choctaw Bayou	P
S-12	English Bayou	C
S-13	West Fork of Bayou Lacassine	U
S-14	Lake Verret	U
S-15	Bayou Black*	P
S-16	East Ascension	P
S-17	Bayou Plaquemine*	P
S-18	Bayou Queue de Tortue*	P
S-19	Little Indian Bayou*	P
S-20	Bell City*	P
S-21	Upper Vermillion*	P
S-22	Slidell	P
S-23	Beaver, Button, etc.	P

* Data not available on these projects. Projects mapped, but not profiled.

LOUISIANA DEPARTMENT OF PUBLIC WORKS (W)

<u>Project No.</u>	<u>Name</u>	<u>Status</u>
W-1	Potential reservoir for Big Creek, in Tangipahoa Parish	P
W-2	Potential reservoir for Zachary Site #1 in E. Baton Rouge Parish	P
W-3	Potential reservoir for Zachary Site #2 in E. Baton Rouge Parish	P
W-4	Empire Lock	C
W-5	Ostrica Lock	C

SUB-STATE AND QUASI-PUBLIC (Q)

<u>Project No.</u>	<u>Name</u>	<u>Status</u>
Q-1	Amite River Reservoirs	P
Q-2	Port of Tangipahoa	P
Q-3	Centroport	U
Q-4	Jefferson Parish Landfill at Bonnabel on Lake Pontchartrain	C
Q-5	Jefferson Parish Fishermen's Wharf Breakwater	U
Q-6	Orleans-Breakwater Drive Landfill	C
Q-7	New Orleans Lakefront Airport	C
Q-8	Port of Iberia (expansion)	P
Q-9	Greater Baton Rouge Port	
Q-10	Jefferson Parish Lakefront Development Plan	P
Q-11	River Bend Nuclear Power Station, Units 1 and 2	P

PRIVATE DEVELOPMENTS (Pr)

<u>Project No.</u>	<u>Name</u>	<u>Status</u>
Pr-1	Commercial Development, North Pass	P
Pr-2	Residential Development, Jones Island Resort (North Pass, Tangipahoa)	
Pr-3	Residential Development, Desert Bayou	
Pr-4	Port Lewisburg Residential Development	
Pr-5	Mariner's Village Residential Development	
Pr-6	LaCombe Harbor, Residential Development	C
Pr-7	Saray Beach, Marina	C
Pr-8	Eden Isles, Residential Development	U
Pr-9	Coin du Lestin, Bayou Bonfouca	C
Pr-10	River Oaks, Waterfront Residential Development	U
Pr-11	Doubloon Bayou Residential Development	U
Pr-12	Venetian Isles Residential Development	C
Pr-13	New Orleans East	P
Pr-14	Lake Forest	C
Pr-15	LaBranche Industrial Park	
Pr-16	Lakeland Gardens Residential Development	
Pr-17	LaPlace Park	
Pr-18	Fletcher Isles, Ponchatoula	
Pr-19	Clam Shell and Sand Dredging, Lake Pontchartrain	U
Pr-20	Abbeville Industrial Park	U
Pr-21	Chitimacha's Park	U
Pr-22	New Iberia Airport Improvements	P
Pr-23	Commercial Canal Extension	P
Pr-24	Fresh Water City	P
Pr-25	Proposed EDA Project on Intracoastal Waterway	P
Pr-26	Cypremort Beach Redevelopment	P
Pr-27	Industrial City	P
Pr-28	Nouvelle	P
Pr-29	Tammany Park	P
Pr-30	Wooddale (East of Morgan City)	P
Pr-31	Belle Terre	U
Pr-32	Superport	
Pr-33	Algiers Area Development Plan	P
Pr-34	New Shopping Center (Cypress Park Area - Lutcher)	
Pr-35	Lac Des Allemands Community (behind Vacherie, St. John Parish)	
Pr-36	Clam and Oyster Shell Dredging in Marsh Island Vicinity	U
Pr-37	Crude oil and natural gas production and other mining operations in navigable waters along the Louisiana coast	U
Pr-38	St. James Parish - Acadia and Winchester Planta- tion industrial developments	P
Pr-39	Bayou des Famille Levee	U

FEDERAL STUDIES IN LOUISIANA (F)

<u>Project No.</u>	<u>Name</u>
F-1	West Texas and Eastern New Mexico Water Impact Study
F-2	Lower Mississippi Region Comprehensive Study
F-3	Southwest Louisiana River Basins Study
F-4	New Orleans to Baton Rouge Metropolitan Area Study
F-5	Feasibility Study of an increased navigation channel from Barataria Bay Waterway in the vicinity of Lafitte to the Gulf Intracoastal Waterway
F-6	Determine advisability of extending navigational channel 1,500 feet in Bayou LaLoutre from Bayou Yscloskey
F-7	Gulf Intracoastal Waterway - Highway Crossings Study (feasibility at 10 locations)
F-8	Determine need for improvement to existing flood control, navigation, water supply, and quality control facilities with respect to recreation, wildlife, and related water and land resources on the Mermentau, Vermilion, and Calcasieu Rivers, and on Bayou Teche
F-9	Determine feasibility of providing a larger channel in the Mississippi River - Gulf Outlet
F-10	Rural Environmental Conservation Program
F-11	Deep Draft Access to ports in New Orleans and Baton Rouge
F-12	East Pearl River Navigation and Water Supply Study - Mobile District U.S. Army Corps of Engineers

LOUISIANA DEPARTMENT OF HIGHWAYS (H)

<u>Project No.</u>	<u>Classification of Road</u>	<u>Parish and Project Name</u>	<u>Status</u>
H-1	Primary	Jefferson - La. 23 - Gretna to Belle Chasse	C
H-2	Primary	Jefferson - US 61 - Kenner Overpass and Approaches	U
H-3	Primary	Jefferson- US 90 - East Bank Traffic Circle	P
H-4	Primary	Jefferson - US 90 - Causeway Blvd. to Orleans Parish Line	C
H-5	Primary	Jefferson - US 90 - Lafayette Street Peters Road	P
H-6	Primary	Jefferson - Earhart Blvd.	P
H-7	Primary	Jefferson - Lafourche Parish Line to Ames Blvd.	P
H-8	Primary	Jefferson - US 90 - at Dakin Street	P
H-9	Primary	Jefferson - US 90 - Lafayette Street to Mississippi River Bridge	P
H-10	Primary	Jefferson - Earhart Blvd. (Airline Highway West of Kenner to Hickory)	P
H-11	Primary	Jefferson - Extension of Louisiana Avenue from West Bank Expressway to Lapalco	P
H-12	Primary	Jefferson - US 90 - West Bank Expressway Interchange	P
H-13	Primary	Jefferson - Earhart Blvd.	P
H-14	Primary	Jefferson - US 90 - West Bank Traffic Circle	P
H-15	Primary	Jefferson - Ames Blvd. to Lafourche Parish Line	P

<u>Project No.</u>	<u>Classification of Road</u>	<u>Parish and Project Name</u>	<u>Status</u>
H-16	Primary	Jefferson - La. 1 - Bayou Thunder Overflow Bridge	P
H-17	Secondary	Jefferson - La. 18 - Harvey Canal Bridge	U
H-18	Secondary	Jefferson - La. 45 - Waggoner's Ferry Bridge	U
H-19	Secondary	Jefferson - La. 611-9 - US 61 to Orleans Parish Line	P
H-20	Primary	Lafourche - La. 1 - Golden Meadow to Larose	P
H-21	Primary	Lafourche - La. 1 - Bayou Thunder	P
H-22	Primary	Lafourche - US 90 - Terrebonne Parish Line to Savoie	U
H-23	Primary	Lafourche - US 90 - Savoie to La. 307	P
H-24	Primary	Lafourche - Larose to Jefferson Parish Line	P
H-25	Primary	Lafourche - La. 1 - Bayou Ferblane Bridge	P
H-26	Secondary	Lafourche - Bayou Lafourche Bridge (West Bypass Road Thibodeaux)	P
H-27	Secondary	Lafourche - Bayou Lafourche Bridge (at Nicholls State College)	P
H-28	Secondary	Lafourche - Bayou Lafourche Bridge at Larose	U
H-29	Secondary	Lafourche - La. 308 - Golden Meadow Bridge Approaches	C
H-30	Secondary	Lafourche - La. 308 - Galliano Bridge and Approaches	C

<u>Project No.</u>	<u>Classification of Road</u>	<u>Parish and Project Name</u>	<u>Status</u>
H-31	Secondary	Lafourche - La. 308 - Bayou Lafourche Bridge (Larose)	U
H-32	Secondary	Lafourche - La. 308 - Relocation at Rita	C
H-33	Primary	Lafourche - La. 1 - Golden Meadow to Bayou Lafourche	P
H-34	Primary	Lafourche - Larose	P
H-35	Primary	Lafourche - Des Allemands to Assumption Parish Line	P
H-36	Primary	Orleans - US 90 - Crowder Road to City Route 70	P
H-37	Primary	Orleans - US 90 - Danziger Bridge	P
H-38	Primary	Orleans - Earhart Blvd.	P
H-39	Primary	Orleans - Jefferson Parish Line to Monroe Street	P
H-40	Primary	Orleans - US 90 - Chef Menteur Bridge to Rigolets	P
H-41	Primary	Orleans - US 90 - Chef Menteur Bridge	P
H-42	Primary	Orleans - US 90 - Rigolets Bridge	P
H-43	Secondary	Orleans - La. 47 - Bayou Bienvenue Bridge	C
H-44	Secondary	Orleans - La. 47 - Gulf Outlet Bridge	C
H-45	Secondary	Orleans - La. 47 - I-10 Gulf Outlet Bridge	C
H-46	Secondary	Orleans - Hayne Blvd. from Paris Road to Downman Road	U

<u>Project No.</u>	<u>Classification of Road</u>	<u>Parish and Project Name</u>	<u>Status</u>
H-137	Interstate	Orleans - I-610 - Downtown bypass, New Orleans	C
H-47	Primary	Plaquemines - La. 23 - Gloria to Fort Jackson	U
H-48	Secondary	Plaquemines - Crown Point at La. 23	P
H-49	Primary	St. Bernard - Florida Avenue Extension	P
H-50	Secondary	St. Bernard - La. 47 - Paris Road to Frontage Road	C
H-51 (3)	Interstate	St. Bernard and Orleans Parishes - I-410 - Chalmette North to Junction I-10 at Paris Road	P
H-52	Primary	St. John the Baptist - St. Charles Parish to St. James Parish (following river)	P
H-134 (2)	Interstate	St. John the Baptist - I-55 - Lake Pont- chartrain South to junction with I-10	U
H-53	Primary	St. Charles - Killona to US 90	C
H-54	Primary	St. Charles - Killona to US 90 (Sec.1)	C
H-55	Primary	St. Charles - Killona to US 90 (Sec.2)	C
H-56	Primary	St. Charles - Killona to Sunshine Bridge	U
H-57	Secondary	St. Chalres - La. 18 - Jefferson Parish Line to Luling	U
H-58	Primary	St. Charles - I-410 to Lafourche Parish Line	P
H-51 (1)	Interstate	St. Charles - I-410 - I-10 South to Boutte	U
H-51 (2)	Interstate	St. Charles, Jefferson, Orleans, and St. Bernard Parishes - I-410 - Boutte East to Chalmette	P
H-59	Primary	St. James - US 61 - Blind River Bridge	P

<u>Project No.</u>	<u>Classification of Road</u>	<u>Parish and Project Name</u>	<u>Status</u>
H-60	Primary	St. James - Killona to Sunshine Bridge	P
H-61	Primary	St. James - La. 3125 - Sunshine Bridge to Gramercy	P
H-62	Primary	St. James - St. John the Baptist Parish to Sunshine Bridge (following river)	P
H-63	Primary	St. John - US 61 - Left Turn Lanes at LaPlace Park	P
H-64	Primary	Terrebonne - US 90 - Assumption Parish Line to Gibson	P
H-65	Primary	Terrebonne - US 90 - Gibson to Gray	P
H-66	Primary	Terrebonne - US 90 - Gray to Lafourche Parish Line	P
H-67	Secondary	Terrebonne - La. 57 - Bayou Dulac Bridge	C
H-68	Secondary	Terrebonne - US 90 - Houma to La. 660	P
H-69	Secondary	Terrebonne - La. 315 - Bayou Dularge (Intracoastal Waterway)	P
H-70	Secondary	Terrebonne - Houma, Calvin Street to Cypress Street Bridge at Intracoastal Canal	P
H-71	Primary	Terrebonne - Gibson to Lafourche Parish Line	P
H-72	Primary	Acadia - US 90 - Mermentau River Bridge, in Mermentau	P
H-73	Primary	Acadia - US 190 - Jefferson Davis Parish Line to Evangeline Parish Line	P
H-74	Secondary	Acadia - La. 3123 - LSU Access Road	C
H-75	Primary	Iberia - La. 14 - Bayou Carlin Bridge, Delcambre	P

<u>Project No.</u>	<u>Classification of Road</u>	<u>Parish and Project Name</u>	<u>Status</u>
H-76	Primary	Iberia - La. 14 - Vermilion Parish Line to New Iberia	P
H-77	Primary	Iberia - US 90 - Jeanerette to St. Mary Parish Line	C
H-78	Primary	Iberia - US 90 - New Iberia to Jeanerette	P
H-79	Secondary	Iberia - Access road to eastern New Iberia	P
H-80	Secondary	Iberia - Access road to western New Iberia	P
H-81	Secondary	Iberia - La. 86 - La. 344 to Bayou Teche	P
H-82	Secondary	Iberia - La. 182 - La. 182 to La. 87	P
H-83	Primary	Lafayette - US 167 - Maurice to Lafayette	P
H-84	Primary	Lafayette - US 167 - Johnston Street in Lafayette	P
H-85	Primary	Lafayette - US 167 - Opelousas to Lafayette	P
H-86	Primary	Lafayette - Metro Loop (I-10 to Eraste Landry)	P
H-87	Primary	Lafayette - Metro Loop (Eraste Landry to Congress)	P
H-88	Primary	Lafayette - Outer Loop	P
H-89	Secondary	St. Martin - Extension of La. 94 to La. 328	P
H-90	Secondary	St. Martin - La. 94 - Lafayette Parish Line to Breaux Bridge	P
H-91	Secondary	St. Martin - La. 31 to La. 347	P
H-92	Secondary	St. Martin - La. 70 - Stevensville to Belle River	C

<u>Project No.</u>	<u>Classification of Road</u>	<u>Parish and Project Name</u>	<u>Status</u>
H-93	Secondary	St. Martin - La. 70 - St. Mary Parish line to Stevensville	C
H-94	Secondary	St. Martin - La. 31 - New Iberia to St. Martin	P
H-95	Primary	St. Mary - US 90 - Iberia Parish line to Baldwin	U
H-96	Primary	St. Mary - US 90 - Baldwin to Centerville	P
H-97	Primary	St. Mary - US 90 - Centerville to Calumet	P
H-98	Primary	St. Mary - US 90 - Morgan City Bridge and approaches	U
H-99	Primary	St. Mary - US 90 - Morgan City to Assumption Parish line	U
H-100	Primary	St. Mary - US 90 - Jeanerette to Baldwin	U
H-101	Secondary	St. Mary - La. 70 - St. Martin Parish line southwest	C
H-102	Secondary	St. Mary - La. 319 - Cypremort Bridge	C
H-103	Secondary	St. Mary - La. 670 - Adeline Bridge	P
H-104	Primary	St. Mary - US 90 - Morgan City	C
H-105	Primary	St. Mary - Assumption Parish line to Morgan City	P
H-106	Primary	Vermilion - La. 14 - West of Kaplan to Abbeville	P
H-107	Primary	Vermilion - La. 14 - Abbeville to Iberia Parish line	P
H-108	Primary	Vermilion - US 167 - Abbeville to Maurice	C

<u>Project No.</u>	<u>Classification of Road</u>	<u>Parish and Project Name</u>	<u>Status</u>
H-109	Secondary	Vermilion - La. 82 - Intracoastal Canal (Forked Island)	U
H-110	Secondary	Vermilion - La. 82 - Extension South near Pecan Island and Paul J. Rainey Wildlife Refuge	P
H-111	Primary	Ascension - US 61 - Prairieville to East Baton Rouge Parish line	U
H-112 (1)	Interstate	Ascension - I-10 - Louisiana-Mississippi line west to junction with US 61	C
H-112 (2)	Interstate	Ascension - I-10 - US 61 to Sorrento	U
H-112 (3)	Interstate	Ascension - I-10 - Sorrento to Louisiana- Texas line	C
H-113	Primary	Ascension - La. 1 - Donaldsonville to Iberville Parish line	P
H-114	Primary	Ascension - La. 22 - Sorrento south	P
H-115	Primary	Ascension - US 61 - New River Bridge (Gonzales)	P
H-116	Primary	Ascension - US 61 - LaPlace to Sorrento	P
H-117	Primary	Ascension - US 61 - Panama Canal Bridge	P
H-118	Primary	Ascension - US 61 - Bayou Conway Bridge (McElroy)	P
H-119	Primary	Ascension - US 61 - LaPlace to Sorrento	P
H-120	Primary	Ascension - US 61 - Bayou Francois Bridge	P
H-121	Primary	Ascension - La. 3089 - Sunshine Bridge to Donaldsonville	C
H-122	Secondary	Ascension - La. 22 - I-10 to US 61	P

<u>Project No.</u>	<u>Classification of Road</u>	<u>Parish and Project Name</u>	<u>Status</u>
H-123	Secondary	Ascension - La. 44 - Gonzales to Burnside	U
H-124	Secondary	Ascension - La. 70 - Sunshine Bridge to Assumption Parish line	C
H-125	Secondary	Ascension - La. 943 - Bayou Lafourche (Donaldsonville)	P
H-126	Secondary	Ascension - La. 431 - Lake Villar	P
H-127	Primary	Ascension - La. 3127 - I-410 near Luling to Donaldsonville	P
H-128	Primary	Assumption - US 90 - St. Mary Parish line to Terrebonne Parish line	U
H-129	Secondary	Assumption - La. 69 - Iberville Parish line to La. 70	C
H-130	Secondary	Assumption - La. 398 - La. 1 to La. 398	P
H-131	Secondary	Assumption - La. 70 - Grand Bayou	P
H-132	Secondary	Assumption - Paincourtville	P
H-133	Secondary	Assumption - La. 403 - Bayou Lafourche (Paincourtville)	C
H-135	Primary	Assumption - Lafourche Parish line to St. Mary Parish line	P
H-139	Secondary	Assumption - La. 308 - Bayou Lafourche Bridge at Supreme	P
H-136 (1)	Interstate	East Baton Rouge - I-110 - Baton Rouge, from Junction with I-10 to Hollywood Street	C
H-136 (2)	Interstate	East Baton Rouge - I-110 - Baton Rouge, from Hollywood Street to Junction with US 61 (Scotlandville)	P

<u>Project No.</u>	<u>Classification of Road</u>	<u>Parish and Project Name</u>	<u>Status</u>
H-138 (1)	Interstate	East Baton Rouge - I-12 - Baton Rouge to Livingston Parish line	C
H-140	Primary	East Baton Rouge - La. 19 - North city limit of Baker to La. 64	P
H-141	Primary	East Baton Rouge - La. 19 - Monte Sano Bayou	P
H-142	Primary	East Baton Rouge - La. 19 - Scenic Highway to Larvey Lane	P
H-143	Primary	East Baton Rouge - US 61 - Scotlandville to Alsen	P
H-144	Primary	East Baton Rouge - US 61 - Claycut Bayou	P
H-145	Primary	East Baton Rouge - US 61 - Alsen to Thompson Creek	P
H-146	Primary	East Baton Rouge - La. 67 - White Bayou Bridge	P
H-147	Primary	East Baton Rouge - La. 67 - Plank Road Bridge	P
H-148	Primary	East Baton Rouge - La. 67 - Hooper Road to Groom Road	P
H-149	Secondary	East Baton Rouge - La. 37 - Courtland Street to Sullivan Road	C
H-150	Secondary	East Baton Rouge - La. 37 - Comite to Greenwell Springs	P
H-151	Secondary	East Baton Rouge - La. 42 - Highland Road	P
H-152	Secondary	East Baton Rouge - La. 64 - La. 964 to La. 67 (in Zachary)	C
H-153	Secondary	East Baton Rouge - Outer Belt to Bayou Duplantier Road	P

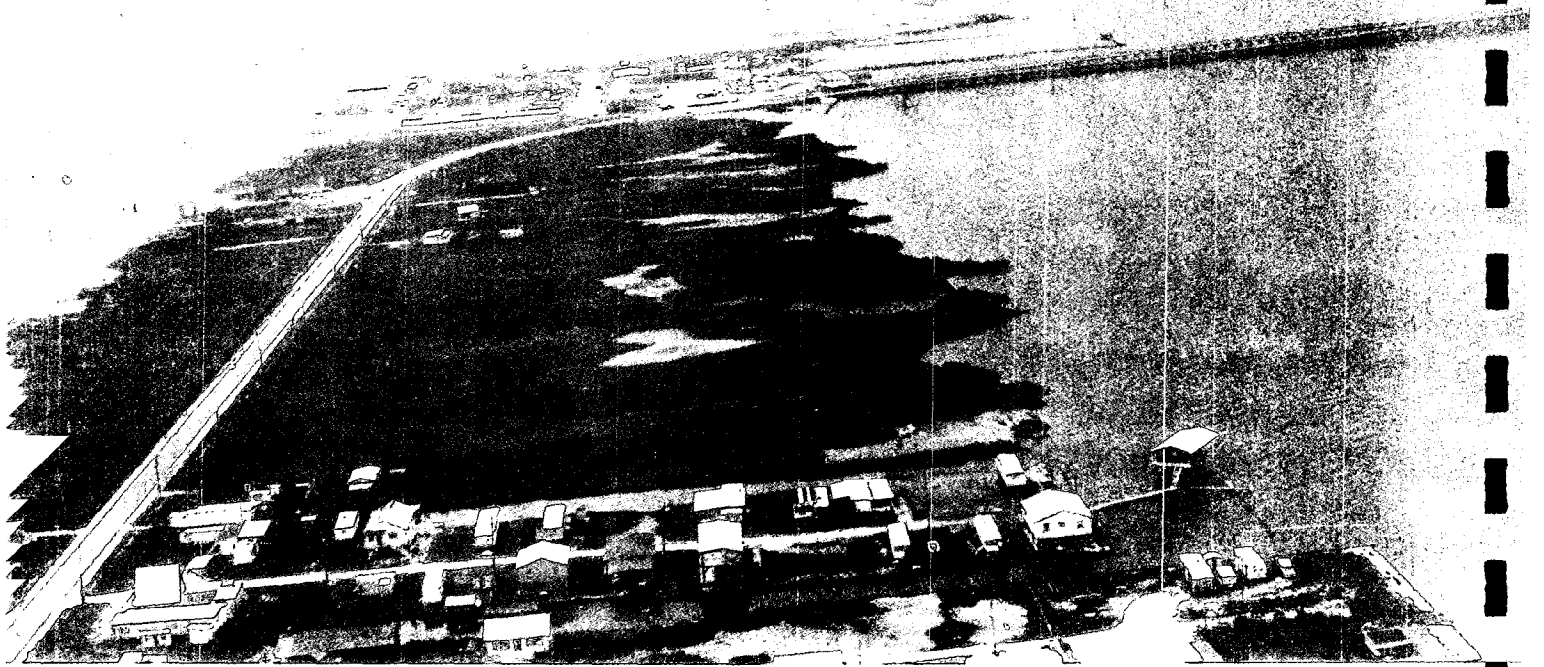
<u>Project No.</u>	<u>Classification of Road</u>	<u>Parish and Project Name</u>	<u>Status</u>
H-154	Secondary	East Baton Rouge - La. 73 - College Drive to Foster Drive	C
H-155	Secondary	East Baton Rouge - La. 73 - Drusilla to College Drive	P
H-156	Secondary	East Baton Rouge - La. 408 - Howell to east of Blackwater Bayou	U
H-157	Secondary	East Baton Rouge - La. 408 - Scenic Highway to Plank Road	C
H-158	Secondary	East Baton Rouge - La. 408 - Clark Drive Underpass	C
H-159	Secondary	East Baton Rouge - La. 409 - Sandy Creek Bridge	P
H-160	Secondary	East Baton Rouge - La. 427 - Bayou Manchac Bridge	P
H-161	Secondary	East Baton Rouge - La. 427 - Hood Street to College Drive	P
H-162	Secondary	East Baton Rouge - La. 3064 - Essen Lane (Baton Rouge)	C
H-163	Secondary	East Baton Rouge - La. 427 - Railroad Overpass, Essen Lane	P
H-164	Primary	East Baton Rouge - US 61 - Baton Rouge northwesterly to Scotlandville	P
H-165	Primary	Iberville - La. 1 - Route 1 in Plaquemine	P
H-166	Primary	Iberville - La. 1 - South of city limits of Plaquemine	P
H-167	Primary	Iberville - La. 1 - South of City limits of White Castle to Ascension Parish line	P
H-168	Secondary	Iberville - La. 77 - Bayou Grosse Tete (Rosedale)	P

<u>Project No.</u>	<u>Classification of Road</u>	<u>Parish and Project Name</u>	<u>Status</u>
H-169	Secondary	Iberville - La. 977 - Bayou Grosse Tete (Maringouin)	P
H-170	Primary	Iberville - La. 1 - Bayou Plaquemine	P
H-171	Primary	West Baton Rouge - US 190 - Lobdell Overpass	P
H-172	Secondary	West Baton Rouge - La. 415 - I-10 to US 190	P
H-173	Primary	West Baton Rouge - US 167/La. 3171 - North-South Expressway	P
H-174	Secondary	Livingston - La. 3002 - I-12 to US 190 at Denham Springs	C
H-138 (2)	Interstate	Livingston - I-12 - East Baton Rouge Parish line to Tangipahoa Parish line	C
H-175	Primary	St. Tammany - US 11 - Maestri Bridge, Slidell	P
H-176	Primary	St. Tammany - US 190 - Covington to Chinchuba	U
H-177	Primary	St. Tammany - La. 21 - Bogue Chitto Bridge and approaches	C
H-178	Primary	St. Tammany - La. 21 - Sun to Washington Parish line	C
H-179	Primary	St. Tammany - La. 41 - La. 41 to I-59	C
H-180	Primary	St. Tammany - La. 3114 - Covington Bypass, eastern section	U
H-181	Secondary	St. Tammany - La. 21 - Bayou Dezaire Bridge and approaches	P
H-182	Secondary	St. Tammany - La. 21 - US 190 to Tchefuncte River	P

<u>Project No.</u>	<u>Classification of Road</u>	<u>Parish and Project Name</u>	<u>Status</u>
H-183	Secondary	St. Tammany - La. 433 - Bayou Liberty Bridge and approaches	P
H-184	Secondary	St. Tammany - La. 433 - Bayou Bonfouca Bridge and approaches	P
H-185	Secondary	St. Tammany - La. 1087 - Causeway Approach of US 190	C
H-186	Interstate	St. Tammany - I-10 - Eden Isles interchange	P
H-187	Interstate	St. Tammany - I-59 - Junction of I-10 and I-12 to Louisiana-Mississippi line	C
H-138 (5)	Interstate	St. Tammany - I-12 - Tangipahoa Parish line to junction of I-10 and I-59	C
H-188	Primary	Tangipahoa - US 190 - Church Street to La. 443	C
H-189	Primary	Tangipahoa - US 51 - Junction of US 190 and Wardline Road	P
H-190	Primary	Tangipahoa - Old US 51 - Junction of US 190 and I-12	P
H-191	Primary	Tangipahoa - I-12 - US 190 south to Chinchuba	U
H-134 (1)	Interstate	Tangipahoa - I-55 - Louisiana-Mississippi line south to Lake Pontchartrain	C
H-138 (3)	Interstate	Tangipahoa - I-12 - Livingston Parish line to St. Tammany Parish line	U
H-192	Primary	Calcasieu - La. 27 - Ellender Ferry Bridge	P
H-193	Primary	Calcasieu - La. 27 - I-10 to junction with La. 108	P
H-194	Primary	Calcasieu - US 171 - Lake Charles to English Bayou	C

<u>Project No.</u>	<u>Classification of Road</u>	<u>Parish and Project Name</u>	<u>Status</u>
H-195	Primary	Calcasieu - US 171 - Lake Charles to Gillis	C
H-196	Primary	Calcasieu - US 171 - US 90 to I-10	C
H-197	Primary	Calcasieu - La. 27 - Sulphur to Dequincy	P
H-198	Primary	Calcasieu - La. 12 - Dequincy east and west	P
H-199	Secondary	Calcasieu - La. 108 - Lake Charles, I-10 to US 90	P
H-200	Secondary	Calcasieu - La. 385 - Lake Charles, Common Street (McNeese south)	P
H-201	Secondary	Calcasieu - La. 385 - Lake Charles, McNeese Street (Ryan to Common)	P
H-202	Secondary	Calcasieu - La. 385 - Lake Charles, Ryan Street (7th to 12th Street)	P
H-203	Secondary	Calcasieu - La. 3059 - Lake Charles, Old US 171 to New US 171	C
H-204	Secondary	Calcasieu - La. 384 - Lake Charles, La. 1138-2 to end of 4-lane highway	P
H-205	Secondary	Calcasieu - La. 385 - Black Bayou Bridge	C
H-206	Secondary	Calcasieu - La. 1138-2 - Lake Charles, Ryan Street to Lake Street	P
H-207 (1)	Interstate	Calcasieu - I-210 - I-10 east to Louisiana 3029	C
H-207 (2)	Interstate	Calcasieu - I-210 - La. 3029 east to I-10	U
H-208	Secondary	Cameron - La. 27 - Gibbstown Bridge	P

<u>Project No.</u>	<u>Classification of Road</u>	<u>Parish and Project Name</u>	<u>Status</u>
H-209	Secondary	Cameron - La. 82 - Johnson Bayou School, Holly Beach	C
H-210	Secondary	Jefferson Davis - La. 14 - Mermentau River Bridge (Lake Arthur)	C
H-211	Secondary	Jefferson Davis - La. 382 - New Bayou Chene Bridge	P
H-212	Primary	Jefferson Davis - US 190 - Allen Parish line to Elton	P
H-213	Primary	Jefferson Davis - US 190 - Elton to Acadia Parish line	P



DEVELOPMENT ON A BARRIER ISLAND

SUMMARY

Arriving at a definition of projects having significant impact on coastal resources, it was found to be unusable at this stage of program developments due to insufficient "bench mark" or "control" data. Therefore, a working definition was used that would preclude only maintenance projects which were judged not to substantially alter the existing quality of life or conditions.

Relevant federal, state, regional, and metropolitan agencies were selected, analyzed, with respect to this project, and categorized, but in most cases were not directly contacted to obtain information on plans and projects. A more efficient means was utilized by approaching a selected group of agencies thereby obtaining ninety-five (95%) percent of the public funded projects affecting Louisiana's Coastal Resources.

Information on plans and projects was obtained and analyzed, and a system of "profiling", storage, retrieval, and updating was developed. All relevant U.S. Army Corps of Engineers and U.S. Soil Conservation Service projects were entered into the system for testing. Data gaps were evident, illustrating the need for additional research and continuous maintenance of the system. A second visual means of overlays by which graphic analysis is inherent was used to present the public funded projects. A third element, "master inventory", was created to suggest study work to be accomplished in the next year program.

SOURCES OF INFORMATION

References

1. Louisiana Wetlands Prospectus, Louisiana Advisory Commission on Coastal and Marine Resources, Baton Rouge, 1973.
2. Approaches and Strategies--An Element of a Growth and Conservation Policy, Louisiana State Planning Office, Baton Rouge, 1974.
3. 1972-1973 Biennial Report, Louisiana Department of Public Works, Baton Rouge, 1972?
4. Initial Elements Toward a Comprehensive State Plan 1972, Volumes 1 and 2, Prepared for State of Louisiana Office of State Planning by The Louisiana Planning Corporation in Cooperation with Planning Systems Corporation, Baton Rouge, 1972.
5. Project Maps, Volume 1 and 2, U.S. Army Engineer District, New Orleans, 1974.
6. Testimony on the Maurapas, Pontchartrain, Catherine, and Borgne Estuary Project Moratorium Meeting by the Delta Chapter of the Sierra Club to the Citizen's Advisory Board of the Governor's Council on Environmental Quality on August 21, 1973.
7. Long Range Highway Construction Program, Louisiana Department of Highways, Baton Rouge, 1973 (updated to March, 1975).
8. Report on Construction in the State of Louisiana, for period 12/16/74 - 1/18/75, Louisiana Department of Highways, Baton Rouge, 1975.
9. Louisiana State Planning Office Questionnaire.
10. Louisiana State University Sea Grant Legal Program project files.

SOURCES OF INFORMATION

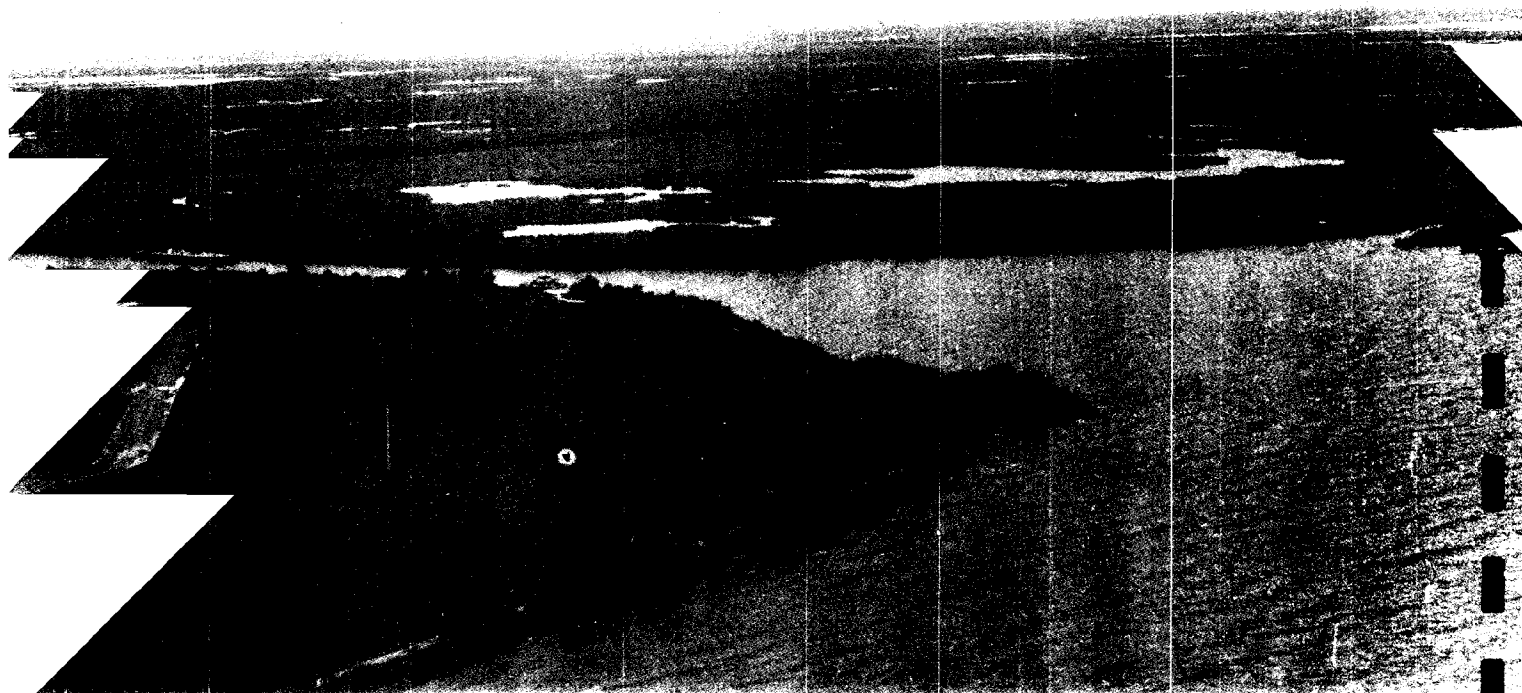
Maps

1. NH 15-5 (Lake Charles), NH 15-6 (Baton Rouge), NH 15-8 (Port Arthur), NH 15-9 (New Orleans), NH 16-4 (Mobile), and NH 16-7 (Breton Sound); Mississippi River Commission, Corps of Engineers, U.S. Army and U.S. Army Engineer Division, Lower Mississippi Valley Flood Control, Navigation and Drainage Projects Maps, 1:250,000; Mississippi River Commission, Corps of Engineers, U.S. Army, Vicksburg, Mississippi.
2. Louisiana 1974 Highway Map, Louisiana Department of Highways, Baton Rouge, 1974.

Interviews

1. Personal interviews at metropolitan planning agencies in the Coastal Area:
 - a. New Orleans
 - b. Lake Charles
2. Personal interviews at regional planning commissions:
 - a. Imperial Calcasieu Regional Planning and Development Association.
 - b. Regional Planning Commission for Jefferson, Orleans, St. Bernard, and St. Tammany Parishes.
 - c. Capitol Regional Planning Commission.
 - d. South Central Planning and Development Commission.
 - e. Acadiana Planning and Development District.
3. Personal interviews at the Louisiana Department of Public Works.

DEVELOPED AND UNDEVELOPED WETLANDS-
OPTIONS FOR TOMORROW



APPENDICES

APPENDIX A - INVENTORY OF
RELEVANT FEDERAL AGENCIES

1. Advisory Council on Historic Preservation

OBJECTIVE: To serve as an authoritative source of information on historic preservation matters and to coordinate the efforts of state, federal and local agencies.

RELATIONSHIP WITH PROJECT:

Source of information for preservation procedures concerning Indian mounds and historical army forts in the area.

2. Agricultural Research Service - Department of Agriculture

OBJECTIVE: Provide information and technical advice to farmers on matters of food production, agricultural techniques and soil conservation.

ACTIVITY: Conducts research in the fields of plant science, entomology, soils, water, marketing and nutrition.

RELATIONSHIP WITH PROJECT:

Source of information on conservation methods, agricultural techniques, and research results.

CONTACT: Agriculture Research Service
Department of Agriculture
1110 Robert E. Lee Blvd.
New Orleans, Louisiana

3. Stabilization and Conservation Service - Department of Agriculture

OBJECTIVE: To develop specific commodity and related land use programs designed for voluntary production, adjustment, resource protection, and price, market and farm income stabilization.

ACTIVITY: Administers various programs such as the Rural Environmental Assistance Program, commodity program, long term land retirement programs, emergency assistance and sugar programs.

RELATIONSHIP WITH PROJECT:

Source of information on agricultural land use.

Forest Service - Department of Agriculture

OBJECTIVE: To promote natural resource uses that will best meet the needs of people, protect and improve the quality of air, water, soil and natural beauty and help protect and improve the quality of the open space environment in urban and community areas.

FUNCTIONS: Cooperates with agencies in the protection, re-forestation, management and use of forested and associated lands vital for watershed protection.

RELATIONSHIP WITH PROJECT:

Source of information on matters regarding the preservation of cypress trees and other environmentally endangered vegetation.

CONTACT: Director South Eastern Area
U.S. Forest Service
1720 Peachtree Road, N.W.
Atlanta, Georgia 30309

Soil Conservation Service - Department of Agriculture

OBJECTIVE: Develop a national soil and water conservation program in cooperation with land users, community planning groups and other agencies.

ACTIVITY: Conservation operations - soil surveys, watersheds, recreation, resource conservation and development.

RELATIONSHIP WITH PROJECT:

Source of information on matters regarding land conservation.

National Bureau of Standards - Department of Commerce

OBJECTIVE: To provide technical services, criteria for public safety and maintain the physical measurement system.

ACTIVITY: Maintains National Standards Reference Data System, conducts research programs and operates computer science center.

RELATIONSHIP WITH PROJECT:

Source of information on matters regarding water quality, air and noise pollution measurement techniques.

National Oceanic and Atmospheric Administration - Department of Commerce

OBJECTIVE: To chart and translate new physical and biological knowledge into systems capable of assessing the sea's potential yield.

ACTIVITY: Serves as a clearing house for specialized coastal zone technical information, identifying coastal research problems and solution possibilities.

RELATIONSHIP WITH PROJECT:

Source of information on matters regarding weather, marine biology and environmental hazards.

CONTACT: National Marine Fisheries Service
South East Region
144 First Avenue, South
St. Petersburg, Florida 33701

Corps of Engineers - Department of Defense

ACTIVITY: Conducts surveys and studies related to inland waterways, flood control and waste water management. Plans and supervises construction of flood control systems and maintenance dredging operations.

RELATIONSHIP WITH PROJECT:

Source of information on flood control systems and matters related to inland waterways.

CONTACT: Corps of Engineers
4400 Dauphine
New Orleans, Louisiana

Department of Health, Education and Welfare

OBJECTIVE: To promote general welfare in the fields of health, education and social security.

ACTIVITY: Administers, inter alia, community environmental management evaluation and decision systems.

RELATIONSHIP WITH PROJECT:

Source of information on Neighborhood Environmental Evaluation Decision System (NEEDS), community health programs and HEW research activities.

Department of Housing and Urban Development

OBJECTIVE: To promote better housing and urban development.

ACTIVITY: Provides assistance in the form of grants for program management, open space programs, construction of public utilities, and facilities and technical research in the fields of environmental control and noise abatement. Administers Departmental programs.

RELATIONSHIP WITH PROJECT:

Lead agency for approval of project, guarantee of loans and source of assistance grants and loans for community services.

CONTACT: Region VI - Area Office

New Orleans
1001 Howard Avenue
New Orleans, Louisiana 70113
(504) 527-2062

Geological Survey - Department of Interior

OBJECTIVE: To conduct research related to topography, geology, minerals and water resources. Classify land as to mineral character and water and power resources.

RELATIONSHIP WITH PROJECT:

Source of information on geological matters.

CONTACT: Geological Survey
1100 Commerce
Dallas, Texas

Bureau of Indian Affairs - Department of Interior

OBJECTIVE: To train and assist Indians in the management of their affairs.

RELATIONSHIP WITH PROJECT:

Source of information on Indian Affairs - otherwise, no direct relationship.

Bureau of Land Management - Department of Interior

OBJECTIVE: To manage acquisition, disposition, in-leasing and out-leasing of public lands.

ACTIVITY: Administers the laws related to Federally-owned land, conducts land surveys and maintains public land records and inventory. Provides planning for recreational, conservation and wildlife preservation uses of lands.

RELATIONSHIP WITH PROJECT:

Source of information on public land matters.

Bureau of Mines - Department of Interior

OBJECTIVE: To promote production of minerals and fuel products by methods that serve the best interests of the nation and general public.

ACTIVITY: Monitors private industries engaged in mineral exploration and mining operations. Administers industrial health and safety programs, studies and projects concerning the mineral industry and environmental problems.

RELATIONSHIP WITH PROJECT:

Source of information on environmental matters related to mining operations.

Office of Oil and Gas - Department of Interior

OBJECTIVE: To serve as a focal point in the federal government for information on petroleum matters.

ACTIVITY: Collects and evaluates information on oil and gas production. Sets policy and establishes regulations for transportation and production of petroleum products.

RELATIONSHIP WITH PROJECT:

Source of information on environmental matters related to oil and gas production operations.

Bureau of Reclamation - Department of Interior

OBJECTIVE: To promote the growth of local and regional economics through development of water and land resources. Includes projects, water quality improvements, fish and wild life enhancement, outdoor recreation and flood control.

ACTIVITY: Administers conservation and reclamation programs for water and related land resources.

ADDRESS: Region 5
Herring Plaza
317 E. Third
Box 1609
Amarillo, Texas 79105

RELATIONSHIP WITH PROJECT:

Source of information on conservation and reclamation programs.

Bureau of Outdoor Recreation - Department of Interior

OBJECTIVE: To promote outdoor recreation and the enhancement and protection of the environment.

ACTIVITY: Administers nationwide outdoor recreation program.

RELATIONSHIP WITH PROJECT:

Source of information on national outdoor recreation programs, policies and financial assistance grants for recreational facilities.

National Park Service - Department of Interior

OBJECTIVE: To develop national parks, monuments, historic sites, and recreation areas for the benefit of the general public.

ACTIVITY: Assists states in conservation and park management.

CONTACT: Southeast regional office
3401 Whipple St.
Atlanta, Georgia 33044

RELATIONSHIP WITH PROJECT:

Source of information on parks and availability of financial assistance for park developments.

Bureau of Sport Fisheries and Wildlife - Department of Interior

OBJECTIVE: To improve fish and wildlife resources of the country for the benefit of the general public.

ACTIVITY: Administers conservation, game and fish preserves and hunting and fishing regulatory programs. Responsible for the enforcement of federal conservation laws for the protection of birds, fish, amphibians and reptiles. Coordinates state and local game management.

CONTACT: Regional Office
809 Peachtree - Seventh Building
Atlanta, Georgia 30323

RELATIONSHIP WITH PROJECT:

Source of information on environmental matters related to fish and wildlife protection.

Occupational Safety and Health Administration - Department of Labor

OBJECTIVE: To promote occupational safety and health activities.

ACTIVITY: Develops and promulgates occupational safety and health standards rules and regulations. Conducts investigations and inspections to determine status of compliance and issues citations for non-compliance with standards.

RELATIONSHIP WITH PROJECT:

Source of information on occupational safety and health requirements. Enforcement agency in these matters.

CONTACT: Area Office
546 Carondelet
New Orleans, Louisiana

Department of Transportation - Assistant Secretary for Systems

OBJECTIVE: To promote research and development of methods for abatement of noise generated by transportation equipment.

RELATIONSHIP WITH PROJECT:

Source of information regarding agency research and development projects.

Federal Aviation Administration - Department of Transportation

OBJECTIVE: To promote air commerce and aviation safety.

Develops rules and regulations for aircraft and airport operations, control and abatement of aircraft noise and emissions.

RELATIONSHIP WITH PROJECT:

Source of information on long range airport planning and aircraft noise and air pollution problems.

CONTACT: Regional Office
8345 Telephone Road
Houston, Texas 77017

Coast Guard - Department of Transportation

APPENDIX B - INVENTORY OF RELEVANT
STATE AGENCIES

1. Air Control Commission

OBJECTIVE: To improve purity of the air resources of the state.

ACTIVITY: Develops and promulgates policies and regulations for air quality and serves as state monitoring and enforcement agency.

RELATIONSHIP WITH PROJECT:

Source of information on air quality regulations and air pollution.

2. Atchafalaya Basin Division of the Department of Public Works

OBJECTIVE: Manage and protect the Atchafalaya Basin.

ACTIVITY: Preserves environmental quality of the Basin, develops recreational facilities in the Basin, secures funding for managing the Basin, prepares water and land use plans for the Basin, and issues bonds.

RELATIONSHIP WITH PROJECT:

Source of information on Atchafalaya Basin.

3. Bureau of Environmental Health

OBJECTIVE: To promote health and welfare of Louisiana citizens.

ACTIVITY: Administer the state-wide solid waste management program. Regulates health-related discharges into waterways. Monitors public water supplies for disease transmission and quality. Develops controls for sanitary sewage disposal which includes inspection of facilities and sampling of discharges. Provides sur-

veillance of the atmosphere for contaminants and prepares a statewide inventory of all air emissions. Assists in the enforcement of air control regulations to minimize or eliminate outdoor burning. Inspects recreational areas to ensure proper sanitary conditions. Surveys, samples, and evaluates oyster waters for safety of consumption of harvested oysters. Inspects commercial and industrial plants for occupational health hazards. Monitors and regulates wholesale produce and the importation of food and drugs. Conducts radiation monitoring of air, water, and food.

RELATIONSHIP WITH PROJECT:

Serves as a source of information on health requirements and enforcing agency for departmental regulations. Provides review of waste water, solid waste and water supply plans.

4. Citizens Advisory Board to the Governor's Council on Environmental Quality

OBJECTIVE: Advises the Governor's Council on Environmental Quality.

ACTIVITY: Meets each month to serve as a forum for expression of public opinion.

RELATIONSHIP WITH PROJECT:

Source of information on public opinion.

5. Deep Draft Harbor and Terminal Authority of Louisiana

OBJECTIVE: To provide, plan, and finance the construction of a deep draft harbor and terminal for the State.

ACTIVITY: The authority is empowered to acquire water bottoms, grant contracts, borrows money, issues bonds, and work generally to develop the deep draft harbor and terminal.

RELATIONSHIP WITH PROJECT:

Source of Superport information.

6. Department of Agriculture

OBJECTIVE: To promote, protect and advance agriculture within the state.

ACTIVITY: Registers, monitors and regulates pesticide usage; regulates the use of fertilizers; sets standards for controlling livestock wastes, maintains an agriculture extension service to advise citizens on home gardening, landscaping, and herbicide and pesticide usage.

RELATIONSHIP WITH PROJECT:

Source of information regarding home gardening, landscaping and herbicide and pesticide usage.

7. Department of Commerce and Industry

OBJECTIVE: To promote commerce and industry within the state.

ACTIVITY: Administers economic and industrial planning programs to attract new industry to the state; proposes and approves contracts between industrial enterprises and municipalities in parishes that encourage industries to locate in their area; grants exemptions from taxation for new or expanded manufacturing enterprises.

RELATIONSHIP WITH PROJECT:

Source for consultation and information. Department may advertise the resources available to various industries and encourage their location on the site.

8. Department of Conservation

OBJECTIVE: To promote conservation of mineral, oil and gas resources of the state.

ACTIVITY: Grants permits for building and the operation of plants that burn natural gas. Cooperates with the Department

of Health and the Stream Control Commission in the issuance of permits for disposal of waste by sub-surface injections.

RELATIONSHIP WITH PROJECT:

Source of information on conservation matters.

9. Department of Highways

OBJECTIVE: To construct and maintain the state road and highway system.

ACTIVITY: Plans, constructs, maintains and regulates the use of the state highway system.

RELATIONSHIP WITH PROJECT:

Source of information on highway system and expansion programs. Cognizant agency for any modifications of state roads or highways that may be required in connection with project development.

10. Department of Public Works

ACTIVITY: Provides planning, design, construction, maintenance and operation of levees, canals, dams, locks, spillways, reservoirs and other public works facilities of the state.

RELATIONSHIP WITH PROJECT:

Source of information on matters related to public works operations and facilities of the state.

11. Environmental Protection Section of the Office of the Attorney General

OBJECTIVE: To oversee state-wide environmental matters.

ACTIVITY: Acts as legal counsel for the Stream Control Commission, Air Control Commission, and the State Land Office. Advises State agencies whose actions affect the environment. Enforces the rules, regulations, and standards of the Stream Control Commission.

RELATIONSHIP WITH PROJECT:

Source of legal advice pertaining to environmental matters.

12. Game and Fish Commissions

OBJECTIVE: To establish, maintain, and improve the State's game and fish preserves.

ACTIVITY: Acquire land, regulate, and control the harvest of game and fish within their preserves.

The Game and Fish Commissions in Louisiana are:

1. Anacoco-Prairie State Game and Fish Commission
2. Avoyelles Parish Fish and Game Preserve Commission.
3. Bayou Bonne Idee Game and Fish Commission
4. Bayou Pierre State Game and Fish Commission
5. Beauregard Old River Game and Fish Preserve Commission.
6. Bundicks Game and Fish Commission
7. Catahoula Lake Game and Fish Commission
8. Lake Field Game and Fish Management Commission
9. Lake Larto State Game and Fish Commission
10. Northwest Louisiana Game and Fish Preserve Commission
11. St. Martin-Lafayette Game and Fish Commission
12. Spanish Lake State Game and Fish Commission
13. Gulf States Marine Fisheries Commission

RELATIONSHIP WITH PROJECT:

Source of information on the State's game and fish.

13. Governor's Council on Environmental Quality.

OBJECTIVE: To advise the Governor on pollution control, natural resources management, and land use activities.

ACTIVITY: Coordinates State agencies on environmental matters, acts as clearing house for environmental impact statements, and develops environmental quality criteria and long-range environmental quality goals.

RELATIONSHIP WITH PROJECT:

Source of information on State environmental quality standards and plans.

14. Gulf States Marine Fisheries Commission

OBJECTIVE: To provide better use of the Gulf of Mexico's marine, shell, and anadromous fisheries.

ACTIVITY: Develops joint programs with other states to promote and protect Gulf fisheries, and to prevent waste of the fisheries.

RELATIONSHIP WITH PROJECT:

Source of information on Gulf fisheries.

15. Horticulture Commission

OBJECTIVE: To assume that work done commercially with plants is performed by qualified and licensed individuals.

ACTIVITY: Makes rules and regulations on qualifications and practices of persons performing services in entomology, plant pathology, cotton insect control, sugar cane borer control, tree surgery, pot plant and nursery stock dealer, retail forestry, fumigation, wholesale forestry, landscape architecture, horticultural service, landscape

contracting, and ornamental plant dusting and spraying. Also conducts examinations for applicants for licenses in these services, issues licenses to qualified applicants, and makes rules and regulations to prevent fraudulent practices.

RELATIONSHIP WITH PROJECT:

Source of information on professionals in plant services.

16. Joint Legislative Committee on Environmental Quality

OBJECTIVE: To develop tools for long-range forecasting of environmental management quality and evaluating the effects of environmental actions.

ACTIVITY: Holds public hearings on proposed legislation, assists in studying proposed legislation relating to control of the environment and of air and water pollution.

RELATIONSHIP WITH PROJECT:

Source of information for pending environmental legislation.

17. Levee Boards

OBJECTIVE: To locate, erect, repair, and maintain levees in the State where required.

ACTIVITY: In each levee district, levee boards are authorized to expropriate lands, issue bonds, and levy annual district taxes. They also request the Department of Public Works to engineer, construct, and repair their levees. The levee boards in the coastal area are: Atchafalaya Basin Levee District; Pontchartrain Levee District; Lafourche Basin Levee District; Orleans Levee District; Lake Borgne Basin Levee District; Grand Prairie Levee District; Buras Levee District; Red River, Atchafalaya and Bayou Boeuf Levee District; and South Louisiana Tidal Water Control Levee District.

RELATIONSHIP WITH PROJECT:

Source of information on coastal area levees.

18. Liquified Petroleum Gas Commission

OBJECTIVE: To regulate the storage, sale, and transportation of liquified petroleum gases and anhydrous ammonia fertilizer.

ACTIVITY: Adopts and enforces rules and regulations governing the storage, sale, and transportation of liquified petroleum gases and anhydrous ammonia. Issues permits to qualified dealers.

RELATIONSHIP WITH PROJECT:

Source of information on liquified petroleum gas use in the State.

19. Louisiana Coastal Commission

OBJECTIVE: To construct a channel for ocean-going vessels which would follow the Intracoastal Waterway.

ACTIVITY: The commission has authority to plan, establish, construct, operate, and maintain a system of channels following the Intracoastal Waterway for ocean-going vessels, structures to supply fresh water for agriculture, structures to prevent pollution of the fresh water system, structures to protect against high tides and salt water intrusion, and structures to improve drainage and remove flood waters. The jurisdiction of the Commission is limited to Acadia, Calcasieu, Cameron, Iberia, Jefferson Davis, Lafayette, Lafourche, St. Landry, St. Martin, St. Mary, Terrebonne, and Vermilion Parishes.

RELATIONSHIP WITH PROJECT:

Source of information on coastal drainage, fresh water, and navigation.

20. Louisiana Commission on Intergovernmental Relations

OBJECTIVE: To Coordinate the Federal, the State, and local governments.

ACTIVITY: Helps the State satisfy Federal requirements for Grant in Aid programs. Makes the State and local governments secure Federal funds. Acts as a liaison between different levels of other states' governing agencies and those in Louisiana. Provides state financial and technical assistance to local governments.

RELATIONSHIP WITH PROJECT:

Source of technical and Federal funding information.

21. Louisiana Forestry Commission

OBJECTIVE: To assure the replenishment of and encourage the development of the State's forests.

ACTIVITY: The commission works to prevent and extinguish forest fires, enforce woodland laws, conduct forest-related experiments, collect statistics, and manage all of the State's forest and timber lands.

RELATIONSHIP WITH PROJECT:

Source of information on State woodlands and timber production.

22. Louisiana Natural and Scenic Rivers System

OBJECTIVE: Preserve and enhance the beauty and ecology of 35 streams or segments of streams in the State.

ACTIVITY: The system is administered by the Wild Life and Fisheries Commission, with the State Planning Office, State Parks and Recreation Commission, and the Governor's Council on Environmental Quality. These agencies review all projects which would affect the streams in the system.

RELATIONSHIP WITH PROJECT:

Source of information of the State's Natural and Scenic Rivers System.

23. Louisiana Public Service Commission

OBJECTIVE: To insure that the public receives adequate public utility and transportation services at reasonable rates.

ACTIVITY: Sets rates, fares, and charges for public utilities and common carriers which are not under municipal or Parish jurisdiction. The commission also holds hearings, and can subpoena witnesses and documents.

RELATIONSHIP WITH PROJECT:

Source of information on State public services.

24. Louisiana State Board of Examiners for Sanitarians

OBJECTIVE: To license persons who practice as sanitarians.

ACTIVITY: The Board examines applicants for sanitarian licenses, establishes minimum educational requirements, issues and reviews licenses, and suspends or revokes licenses.

RELATIONSHIP WITH PROJECT:

Sets qualifications of sanitarians dealing with sanitary landfills.

25. Louisiana State Planning Office

OBJECTIVE: To serve as the Governor's state-wide planning agency.

ACTIVITY: Coordinates state-wide planning; conducts basic planning studies; reviews planning efforts of all state agencies as well as municipal and regional commissions; administers Federal programs for planning purposes; makes funding recommendations; provides assistance to subsidiary governmental bodies.

RELATIONSHIP WITH PROJECT:

Source of information regarding general planning matters.

26. Louisiana State Science Foundation

OBJECTIVE: To promote and stimulate scientific, economic, and technological research in the State.

ACTIVITY: The Foundation engages in research, contracts to purchase research services, acquires and accepts equipment for research, awards fellowships, assists in establishing distinguished professorships, and helps state and federal agencies develop research projects.

RELATIONSHIP WITH PROJECT:

Source of information on research done in the Louisiana Coastal Area.

27. Louisiana State University Center for Wetlands Research

OBJECTIVE: To help manage, protect, and develop the State's wetlands.

ACTIVITY: Disseminates information concerning marine, coastal zone, and wetlands affairs to the public. Conducts research, advisory, and educational programs in Systems Ecology, Waste Effects in Estuarine Areas, Seafood Industries, Coastal Zone Planning and Development, Law and Socio-Economics, and Program Management and Development.

RELATIONSHIP WITH PROJECT:

Source of information on wetlands, wetland projects, and wetland research.

28. Louisiana State University Water Resources Research Institute

OBJECTIVE: To encourage research and graduate work in the field of water resources.

ACTIVITY: The institute produces bulletins, reprints significant water-related papers, and assists researchers in obtaining information.

RELATIONSHIP WITH PROJECT:

Source of water resources information.

29. Louisiana Stream Control Commission

OBJECTIVE: To regulate and coordinate municipal and industrial water pollution control.

ACTIVITY: Develops and promulgates water pollution control rules and regulations, monitors water quality; establishes waste-water treatment needs and schedules. Issues, suspends and revokes waste discharge permits.

RELATIONSHIP WITH PROJECT:

Serves as regulatory agency which issues, suspends or revokes waste discharge permits.

30. Louisiana Tourist Development Commission

OBJECTIVE: To stimulate and increase tourism in the State.

ACTIVITY: Supervises all activities relating to planning, coordinating, and directing public information, and promotional activities for the State.

RELATIONSHIP WITH PROJECT:

Source of State tourism information.

31. Louisiana Wildlife and Fisheries Commission

OBJECTIVE: Promote conservation and replenishment of living resources within the state.

ACTIVITY: Commission enforces rules and regulations, establishes game and wildlife reserves. Issues permits for shell, sand and gravel dredging and fill work. Assists in the enforcement of water pollution control regulations. Advises the Governor on environmental impact matters.

RELATIONSHIP WITH PROJECT:

Source of information on conservation matters and dredging regulations.

32. Natural Resources and Energy Division of the Department of Conservation

OBJECTIVE: To protect and conserve the natural energy resources of the State.

ACTIVITY: The duties of the Division are delegated to the Commissioner of Conservation. The Commissioner regulates and controls the production, transportation, distribution, storage, sale, and use of intrastate natural gas. He can also control the natural gas prices of companies producing or selling gas intrastate, except at the well-head, and approves the construction, extension, or abandonment of natural gas pipelines.

RELATIONSHIP WITH PROJECT:

Source of information on natural gas production in Louisiana.

33. Port and Harbor Commissions

OBJECTIVE: To administer and regulate commerce and traffic within the area of each commission.

ACTIVITY: The commissions have the authority to incur debt and issue bonds, and to expropriate property necessary for construction of port facilities. They construct, operate, maintain, service, acquire, and regulate port facilities. The port and harbor commissions in Louisiana are:

1. Abbeville Harbor and Terminal District
2. Avoyelles Parish Port Commission
3. Greater Baton Rouge Port Commission
4. East Cameron Port Commission

5. Caddo-Bossier Parishes Port Commission
6. Columbia Port Commission
7. Concordia Parish Port Commission
8. Delcambre Port Commission
9. Grant Parish Port Commission
10. Greater Jefferson Port Commission
11. Jonesville Port Commission
12. Jennings Navigation District
13. Greater Krotz Springs Port Commission
14. Lafayette Harbor and Terminal District
15. Greater LaFourche Port Commission
16. Lake Charles Harbor and Terminal District
17. Lake Providence Port Commission
18. South Tangipahoa Parish Port Commission
19. Louisiana Coastal Commission
20. Madison Parish Port Commission
21. Morehouse Parish Port Commission
22. New Iberia Port District
23. Port of New Orleans
24. Greater Ouachita Port Commission
25. Plaquemines Port, Harbor, and Terminal District
26. Pointe Coupee Port, Harbor, and Terminal District

27. Rapides Parish Port Commission
28. Red River Waterway District
29. St. Bernard Port, Harbor, and Terminal District
30. St. Tammany Parish Port Commission
31. South Louisiana Port Commission
32. Tensas Parish Port Commission
33. Terrebonne Port Commission
34. Vinton Harbor and Terminal District
35. West Calcasieu Port, Harbor, and Terminal District
36. West Cameron Port Commission
37. Union Parish Port Commission
38. Morgan City Harbor and Terminal District

34. Recreational Advisory Council

OBJECTIVE: To promote the development of outdoor recreation facilities and programs.

ACTIVITY: Reviews recreation-related programs; supervises long-range recreation planning; handles federal funding requests; coordinates applications of other state agencies for federal aid.

RELATIONSHIP WITH PROJECT:

Source of information on state's outdoor recreation programs.

35. State Archeologist

OBJECTIVE: To advise state agencies in programs which may affect the state's archeological resources.

ACTIVITY: The State Archeologist oversees the excavation and preservation of fossils, relics, artifacts, and monuments, and advises and assists state agencies for environmental impact statements.

RELATIONSHIP WITH PROJECT:

Source of information on the state's archeological resources.

36. State Department of Art, Historical, and Cultural Preservation

OBJECTIVE: To administer, manage, and coordinate the art, historical, and cultural preservation activities of the state.

ACTIVITY: The Department collects, preserves, and exhibits historical and cultural materials and structures owned by the State. The Department also stimulates interest in Louisiana art, architecture, and historical preservation. It also has authority to establish, operate, and manage a French language television broadcasting station with the University of Southwestern Louisiana, and it comments on environmental impact statements.

RELATIONSHIP WITH PROJECT:

Source of information on historical and cultural activities in the State.

37. State Land Office

OBJECTIVE: To manage state-owned land.

ACTIVITY: Provides management for acquisition, disposition, leasing, use and control of state owned land.

RELATIONSHIP WITH PROJECT:

Information and consultation. Source of information on state-owned land matters.

38. State Mineral Board

OBJECTIVE: To promote the development and production of minerals, oil and gas on state owned lands.

ACTIVITY: Administers land leasing programs for mineral explorations and mining.

RELATIONSHIP WITH PROJECT:

Source of information on mineral leases.

39. State Parks and Recreation Commission

OBJECTIVE: To promote and develop parks and recreational programs for the state.

ACTIVITY: Park protection, administration, rule enforcement, assists other state agencies in park site selection; advises on all matters which may affect the quality of outdoor recreation. Issues park permits, coordinates with Bureau of Outdoor Recreation.

RELATIONSHIP WITH PROJECT:

Cognizant agency for any of the recreational areas on the site which may become State parks. The Commission would be responsible for park permits and rule enforcement.

40. State Soil and Water Conservation Committee

OBJECTIVE: To promote soil and water conservation within the state.

ACTIVITY: Advise, consult and assist on matters of soil conservation.

RELATIONSHIP WITH PROJECT:

Source of information on conservation matters.

41. Water Resources Study Commission

OBJECTIVE: To study the state's water policy and its adequacy, recommend revisions and methods for implementing the revisions.

ACTIVITY: Makes studies of ground water resources and drafts statewide ground water control law.

RELATIONSHIP WITH PROJECT:

Consultation and information only.

APPENDIX C - INVENTORY OF RELEVANT
REGIONAL PLANNING AGENCIES

OBJECTIVE: Regional Planning Commissions serve their member parishes and cities, and coordinate inter-jurisdictional planning.

ACTIVITY: Regional Planning Commissions coordinate regional planning with Federal, State, and local programs. They conduct basic planning studies and review planning efforts for local agencies.

RELATIONSHIP WITH PROJECT:
Source of comprehensive planning information for each respective region.

Coastal Area Regional Planning Agencies

1. Regional Planning Commission for Jefferson, Orleans, St. Bernard, and St. Tammany Parishes.
2. Capital Regional Planning Commission.
3. South Central Planning and Development Commission.
4. Acadiana Planning and Development District.
5. Imperial Calcasieu Regional Planning and Development Commission.

APPENDIX D - METROPOLITAN PLANNING AGENCIES

OBJECTIVE: To develop plans for comprehensive city planning and coordinate city agencies, to assist in policy planning matters, and to serve zoning commissions by making recommendations.

ACTIVITY: The agencies produce city land-use, housing, public facilities and recreation, public building, and zoning plans. They review and comment on zoning changes, and assist the city's chief administrative officer in studying local policy alternatives.

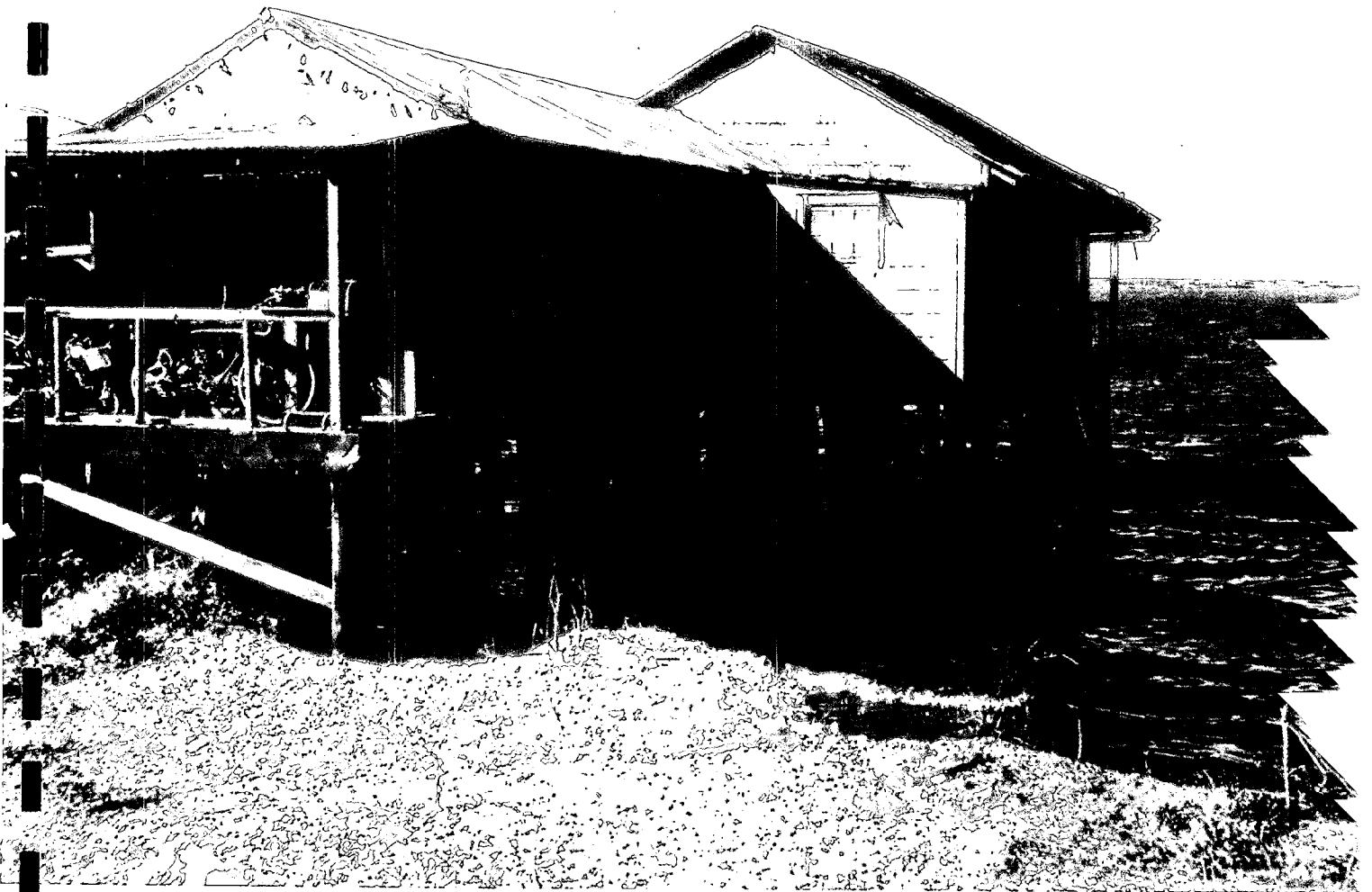
RELATIONSHIP WITH PROJECT:

Serves as regulatory agency on land use, and is a source of local comprehensive plans and information.

Coastal Area Metropolitan Planning Agencies

1. New Orleans City Planning Commission.
2. East Baton Rouge City - Parish Planning Commission.
3. Greater Lake Charles Metropolitan Planning Commission.
4. Lafayette City - Parish Regional Planning Commission.

CAMP ON SHORE OF LAKE PONTCHARTRAIN





PROJECT PROFILES
APPENDIX E

PROJECT PROFILE

No. E-2-35

Description: Lake Pontchartrain Barrier Plan and Chalmette Area Plan for hurricane protection.

Purpose: Flood Control Recreation Drainage Communication or Utility
 Water Supply Hurricane Protection Transportation Other

Sponsor: U.S. Army Corps of Engineers

Location: Along Lake Pontchartrain in St. Charles, Jefferson, and Orleans Parishes, in St. Bernard, and in New Orleans East

Physical Dimensions: Protection for 780 sq. miles of low-lying land

Cost:

Status: Proposed Authorized Complete
 Planned Under Construction Abandoned Reporting Date

Spoil Deposit: Retention Dykes or Areas Spreading Over Water Bottom Deep Water Disposal Building New Marsh Areas

Level of Controversy: Hot Warm Cool Cold

Associated Development: Residential Commercial and Service Industrial Extractive
 Recreational Transportation, Communication or Utility Agricultural Other

Environmental Impact Statement: Assessment Draft Final Other

Project Calendar of Key Dates:

Key Documents Available:

Draft EIS
Final EIS
Voter Referendum

Special Interest Groups:

La. Attorney General's Office
Regional Planning Commission-Jefferson Orleans, St. Bernard, & St. Tammany
New Orleans Levee Board
St. Tammany Parish Police Jury

