



NOAA Data Report NMFS-NWFSC-DR-2025-04

<https://doi.org/10.25923/zcsf-pv93>

Observed and Estimated Bycatch of Salmon in U.S. West Coast Fisheries, 2002–23

December 2025

U.S. DEPARTMENT OF COMMERCE

National Oceanic and Atmospheric Administration
National Marine Fisheries Service
Northwest Fisheries Science Center

NOAA Data Report Series NMFS-NWFSC-DR

The Northwest Fisheries Science Center of NOAA's National Marine Fisheries Service uses the NOAA Data Report NMFS-NWFSC-DR series to disseminate information only. Manuscripts have not been peer-reviewed and may be unedited. Documents within this series represent sound professional work, but do not constitute formal publications. They should only be footnoted as a source of information, and may not be cited as formal scientific literature. The data and any conclusions herein are provisional, and may be formally published elsewhere after appropriate review, augmentation, and editing.

NWFSC Data Reports are available from the NOAA Institutional Repository, <https://repository.library.noaa.gov>.

Mention throughout this document to trade names or commercial companies is for identification purposes only and does not imply endorsement by the National Marine Fisheries Service, NOAA.

Recommended citation:

(Richerson et al. 2025)¹

¹ Richerson, K. E., K. A. Somers, V. J. Tuttle, N. B. Riley, and J. T. McVeigh. 2025. Observed and Estimated Bycatch of Salmon in U.S. West Coast Fisheries, 2002–23. U.S. Department of Commerce, NOAA Data Report NMFS-NWFSC-DR-2025-04.

<https://doi.org/10.25923/zcsf-pv93>



NOAA
FISHERIES

Observed and Estimated Bycatch of Salmon in U.S. West Coast Fisheries, 2002–23

Kate E. Richerson, Kayleigh A. Somers, Vanessa J. Tuttle, Neil B. Riley,
and Jon T. McVeigh

<https://doi.org/10.25923/zcsf-pv93>

Click author name for ORCID.

December 2025

Fishery Resource Analysis and Monitoring Division
Northwest Fisheries Science Center
2725 Montlake Boulevard East
Seattle, Washington 98112
<https://ror.org/05r7z1k40>

U.S. DEPARTMENT OF COMMERCE

National Oceanic and Atmospheric Administration
National Marine Fisheries Service
Northwest Fisheries Science Center

Contents

List of Figures ii

Background 1

Trends 2002–23..... 2

Figures 4

List of References..... 24

Figures

Figure 1. Chinook and coho salmon bycatch in fisheries monitored by the A-SHOP, CM, EM, and WCGOP, 2002–23	4
Figure 2. Salmon bycatch in the limited entry and catch shares bottom trawl fishery, including EM vessels	5
Figure 3. Salmon bycatch in shoreside midwater trawl sectors, including EM vessels, for 2002–23	6
Figure 4. Salmon bycatch in the at-sea hake fishery 2002–23	7
Figure 5. Estimated salmon bycatch in observed non catch shares sectors (excluding limited entry trawl), 2002–23	8
Figure 6. Number of salmon biologically sampled by WCGOP observers 2002–23	9
Figure 7. Number of salmon biologically sampled by A-SHOP observers, 1980–2023	10
Figure 8. Number of salmon biologically sampled by the CM program, 2010–23	11
Figure 9. Boxplot of haul latitudes in the catch share bottom trawl fishery	12
Figure 10. Boxplot of haul latitudes in the midwater rockfish trawl fishery	13
Figure 11. Boxplot of haul latitudes in the midwater hake trawl fishery	14
Figure 12. Boxplot of haul latitudes in the at-sea hake fishery	15
Figure 13. Boxplot of haul bottom depths in the catch share bottom trawl fishery	16
Figure 14. Boxplot of haul depths in the midwater rockfish trawl fishery	17
Figure 15. Boxplot of haul depths in the midwater hake trawl fishery	18
Figure 16. Boxplot of haul depths in the at-sea hake fishery	19
Figure 17. Boxplot of haul day of year in the catch share bottom trawl fishery	20
Figure 18. Boxplot of haul day of year in the midwater rockfish trawl fishery	21
Figure 19. Boxplot of haul day of year in the midwater hake trawl fishery	22
Figure 20. Boxplot of haul day of year in the at-sea hake fishery	23

Background

This report summarizes the observed and estimated bycatch of all salmon species observed in fisheries monitored by the West Coast Groundfish Observer Program (WCGOP), the At-Sea Hake Observer Program (A-SHOP), the Electronic Monitoring (EM) Program, and the Catch Monitor (CM) Program. The WCGOP and A-SHOP are managed by NOAA Fisheries' Northwest Fisheries Science Center Fisheries Observation Science Program (FOS). The West Coast Electronic Monitoring program transitioned from management under Exempted Fishing Permits (2015-2023) to Federal regulations in 2024. We present salmon bycatch in terms of both weight and numbers of individuals, by species. Methods used in this report are similar to the methods presented in an earlier version of this report (Somers et al. 2015) and the most recent groundfish mortality report (Somers et al. 2024a). In brief, in sectors with partial observer coverage, we estimate fleet-wide discards by multiplying observed discard ratios (observed discard divided by observed target catch) by fleet-wide target catch. See Somers et al. 2015, 2024a for a full description of data processing and bycatch estimation methods. This report does not include data from recreational or tribal fisheries, except for the tribal at-sea mothership sector, which is combined with the non-tribal mothership sector for reporting.

The A-SHOP observes vessels that catch and process Pacific hake at sea. The WCGOP observes a number of fleets that deliver catch shoreside for processing, including sectors that target and incidentally catch groundfish. In the Trawl Catch Share Program, landings are sampled by the CM program; for vessels fishing under maximized or optimized retention, this sampling quantifies the majority of their bycatch. All salmon encountered by EM fisheries are required to be landed and sampled dockside; this report includes estimates of salmon bycatch in the small amount of unsampled at-sea discards that occur due for operational and/or safety reasons. This report also includes fish ticket landings data from the Pacific Fishery Information Network (PacFIN). Every year this report is updated to include the newest year of data, the most current data from for previous years, and the most recent data processing procedures. Data processing updates are described in the annual groundfish mortality report (Somers et al. 2024a), which is available in draft form annually in the Pacific Fishery Management Council's (PFMC) September Briefing Book and later in the year in final form as a NOAA Technical Memorandum.

In this report, we have updated the salmon bycatch tables to improve accessibility and ease of analysis for readers by presenting estimated bycatch at only the year and sector level. Methods for estimating unsampled bycatch do not differ from previous reports (i.e., bycatch estimates are generated at the same strata as previous reports, and combined here as appropriate for presentation). Coverage data for these strata are presented in Somers et al. (2024b). New figures illustrate bycatch by latitude, season, and/or depth. The accompanying spreadsheet contains bycatch estimates for all observed/monitored sectors with recorded salmon bycatch, as well as a summary table and information on biological data collected. All weight units are in metric tons (mt), except for individual fish in biological data tables, which are in kilograms (kg).

Trends 2002–23

We focus on Chinook and coho salmon bycatch trends because observed fisheries catch these species in the greatest amounts and at the highest rates. Additionally, these species are targeted by ocean troll fisheries and both species include multiple populations that are listed under the Endangered Species Act. Accounting for salmon bycatch in groundfish fisheries is important in balancing the needs of different stakeholders in the groundfish and salmon fisheries, as well as conserving salmon and the ecosystems of which they are an essential component.

We present data from 2002 to 2023. Chinook bycatch in the hake fishery¹ as a whole has been variable, ranging from 1,422 fish in 2009 to 13,554 in 2014 (Figures 1, 3, 4). In 2023, total bycatch in this fishery was slightly higher than the median value from 2002–2023 (5,798 vs 5,014 fish). In the shoreside (SS) groundfish trawl sectors,² most Chinook bycatch was attributed to the LE, and later CS, bottom trawl fishery (Figures 1, 2). Bycatch was high in 2002 and 2003 (>15,000 estimated fish), but has remained low (<1,000 fish) since 2005 other than 2014 and 2015 (>1,500 fish); however, bycatch has been slowly increasing since 2016. In 2023, bycatch was 998 fish, compared to a long-term median of 517 fish. In non-catch shares (NCS)³ sectors, Chinook bycatch has been low across all years (median 107 fish; Figures 1, 5).

Over the time period examined, coho bycatch was generally an order of magnitude lower than Chinook bycatch, with considerable amounts of inter-annual variability (Figure 1). Bycatch in the hake fishery in 2023 was slightly lower than the long-term median value (Figures 1, 3, 4). Bycatch in the NCS and SS non-hake catch shares fisheries has remained at low or moderate levels across all years, and was close to the long-term median in 2023 (Figure 2, 3, 5).

A-SHOP, WCGOP, and the CM Program collect biological data on salmon, including length, weight, sex, tissue samples, and other information. Figures 6–8 summarize the number of biological samples collected over time.

Figures 9–20 summarize potential latitudinal, depth, and seasonal patterns in bycatch, relative to overall effort in the catch shares bottom trawl, midwater rockfish, midwater hake, and at-sea hake fisheries. These boxplots show the quartiles of all haul latitudes, depths, and days of year, as well as those of hauls that encountered Chinook and coho, excluding outliers. In the catch shares bottom trawl fishery and at sea hake fishery, hauls with Chinook appeared to occur at more southern latitudes than overall effort in recent years, while the opposite appeared in the midwater hake fishery in recent years (Figures 9, 11, 12). This pattern was not evident in the midwater rockfish fishery (Figure 10). In earlier years in the catch shares bottom trawl fishery, hauls with Chinook typically appeared to be shallower than overall effort, while in recent years, the opposite pattern appears (except in 2023; Figure 13). In the midwater rockfish, midwater hake, and at-sea hake fisheries,

¹Includes at-sea and non-tribal shoreside hake sectors.

²Includes shoreside limited entry (LE) and catch shares (CS) bottom trawl, CS fixed gear, CS midwater rockfish, and LE California halibut.

³Includes non-catch shares exempted fishing permits, sablefish primary, nearshore, open access (OA) California halibut, pink shrimp, and OA hook & line sectors.

hauls with Chinook often appeared to be shallower than overall effort (Figure 14-16). In the catch shares bottom trawl fishery, hauls with Chinook often appeared to occur earlier in the season (Figure 17). In the midwater hake fishery, hauls with Chinook often appeared later in the season (Figure 19). In the midwater rockfish and at-sea hake fishery, seasonal patterns were less obvious (figures 18, 20). Overall, patterns in coho bycatch were more difficult to discern due to smaller and less frequent observations.

Figures

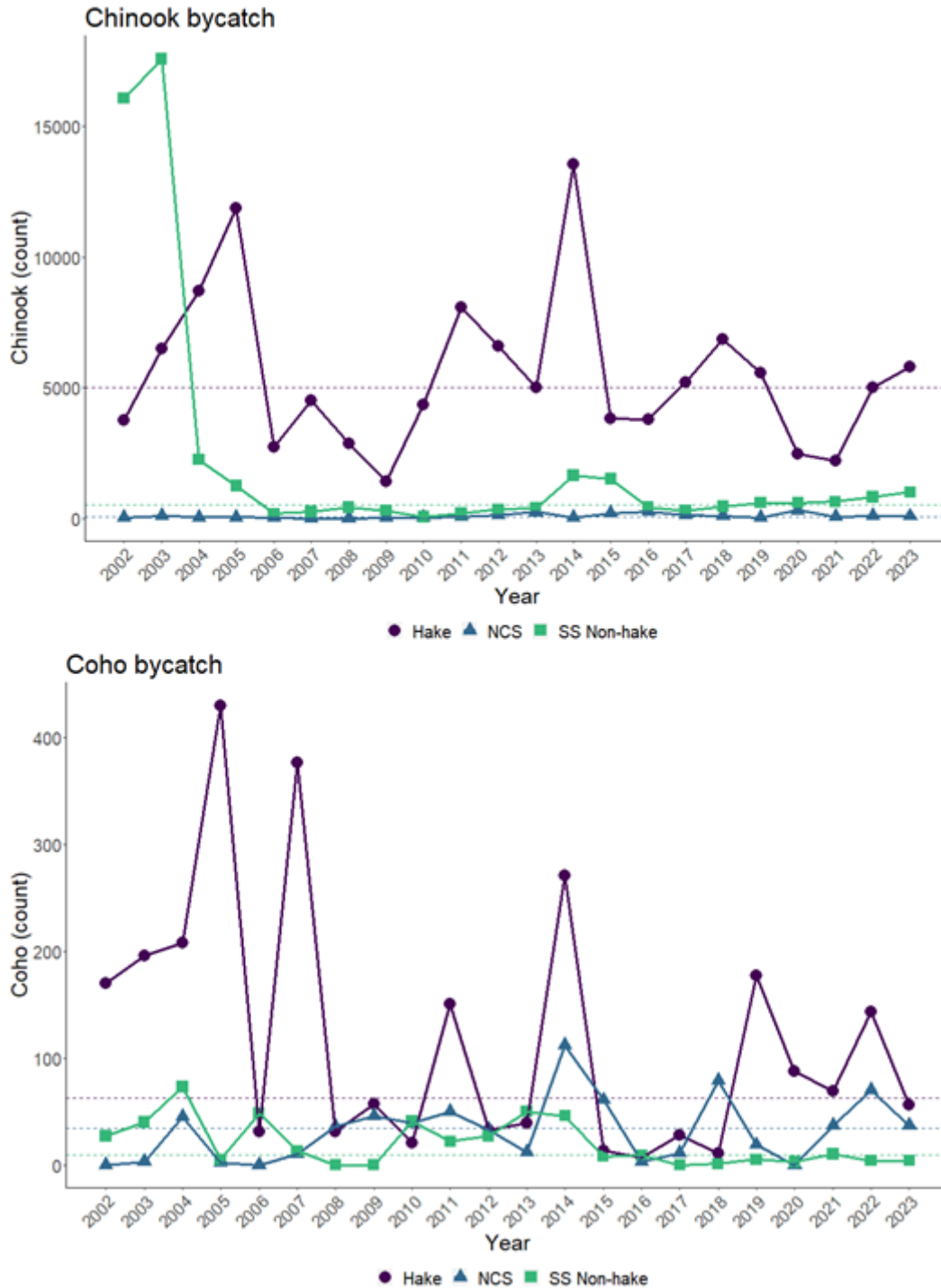


Figure 1. Chinook (upper panel) and coho (lower panel) salmon bycatch in fisheries monitored by the A-SHOP, CM, EM, and WCGOP, 2002–23. Hake includes at-sea catcher processors, at-sea mothership catcher-vessels, and non-tribal shoreside. Non-catch shares (NCS) includes non-catch shares exempted fishing permits, sablefish primary, nearshore, open access (OA) California halibut, pink shrimp, and OA hook & line. Shoreside (SS) non-hake includes shoreside limited entry (LE) and catch shares (CS) bottom trawl, CS fixed gear, CS midwater rockfish, and LE California halibut. Horizontal dashed lines show long-term medians.

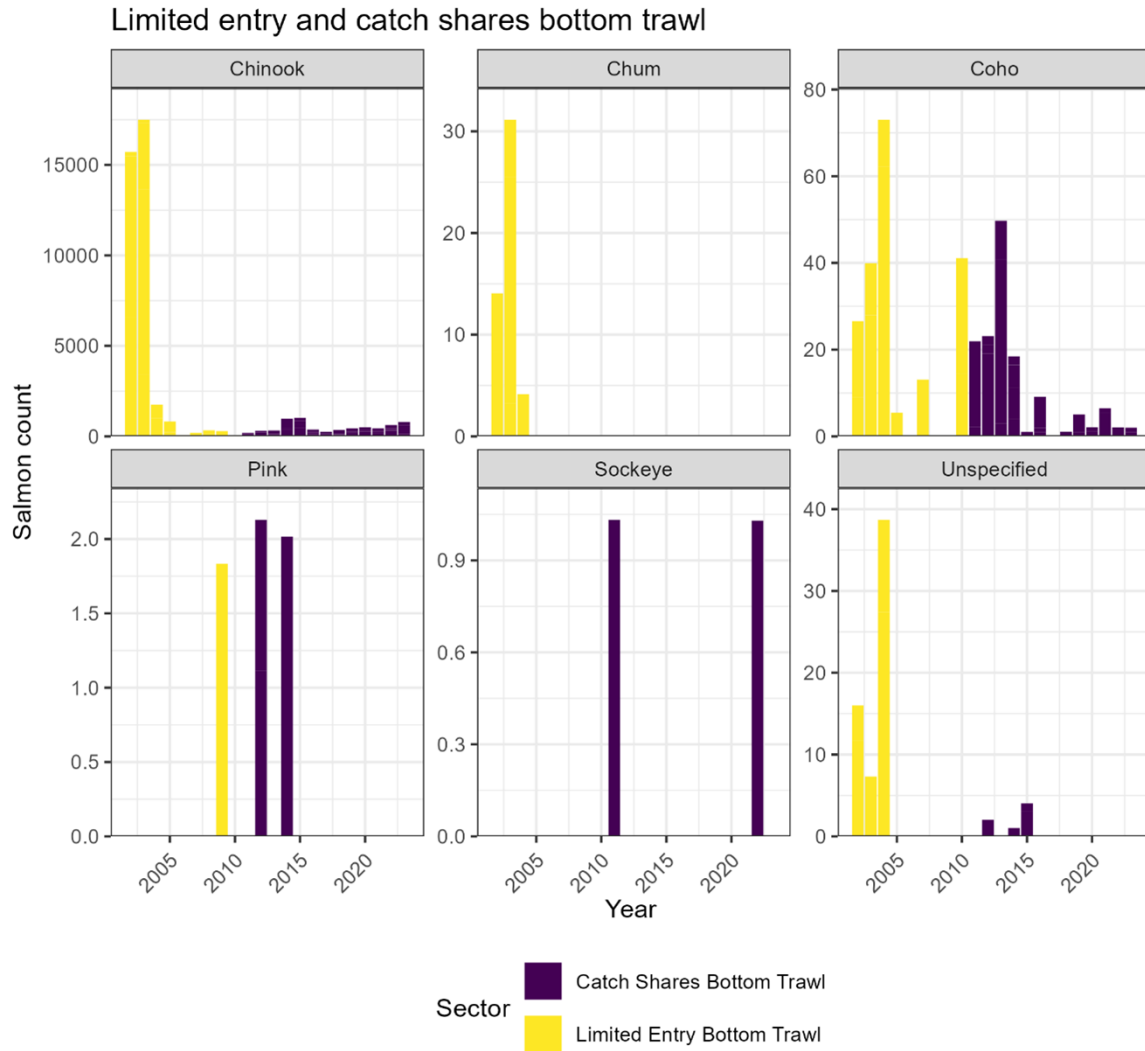


Figure 2. Salmon bycatch in the limited entry (2002–10) and catch shares (2011–23) bottom trawl fishery, including EM vessels. Note that the limited entry bottom trawl fishery counts represent estimates based on partial observer coverage, while the catch shares bottom trawl fishery has full observer or electronic monitoring coverage including dockside monitoring. For confidentiality reasons, non-hake midwater trawl in 2011 and LE California halibut in 2011–13 are combined with catch shares bottom trawl.

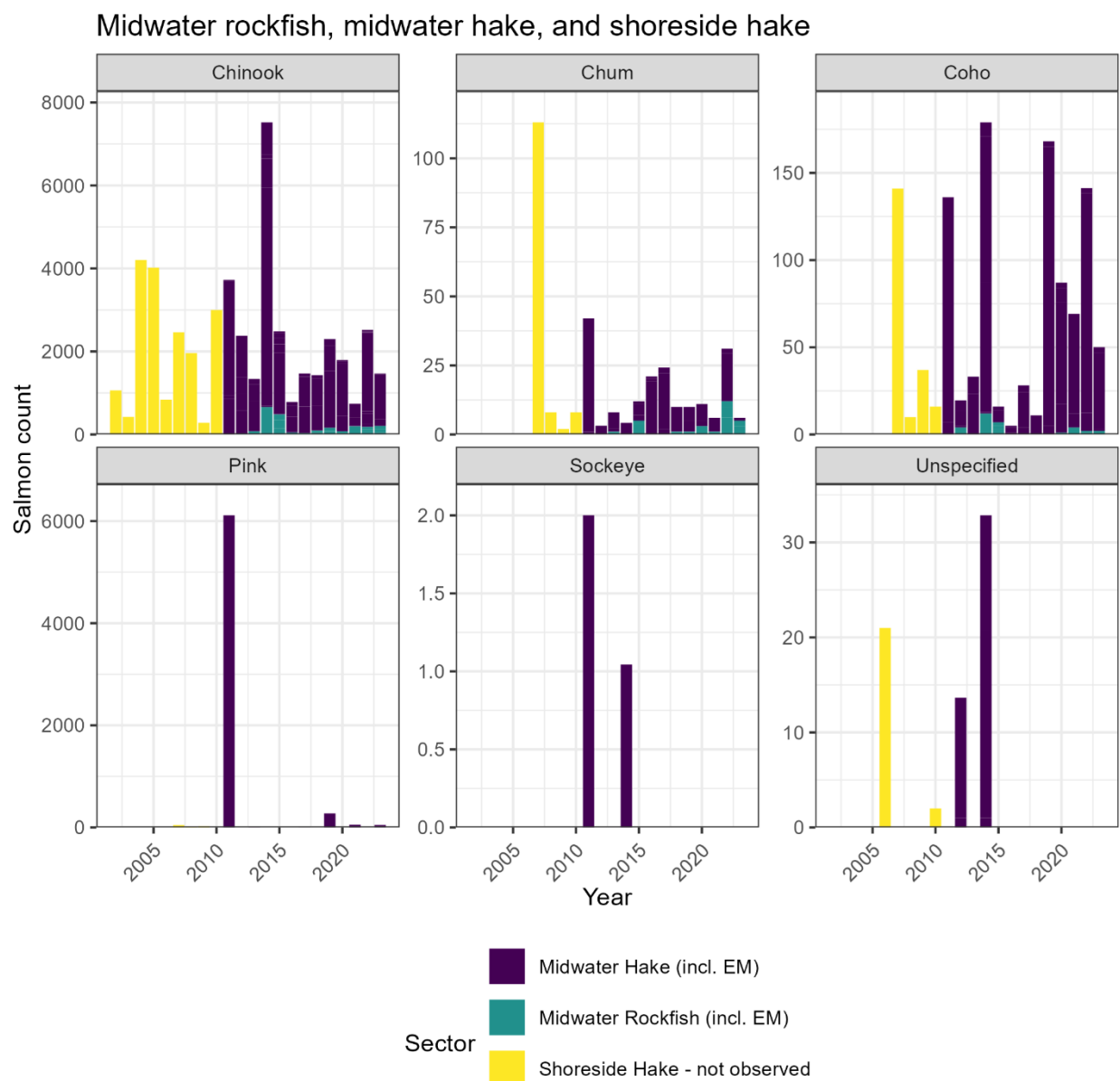


Figure 3. Salmon bycatch in shoreside midwater trawl sectors, including EM vessels, for 2002–23. Shoreside midwater hake was not observed prior to 2011, and the counts presented here come from shoreside monitoring data housed in PacFin. From 2011 on, these sectors have full observer or electronic monitoring coverage. Note that for confidentiality reasons, non-hake catch shares midwater trawl in 2011 is shown combined with catch shares bottom trawl in Figure 2.

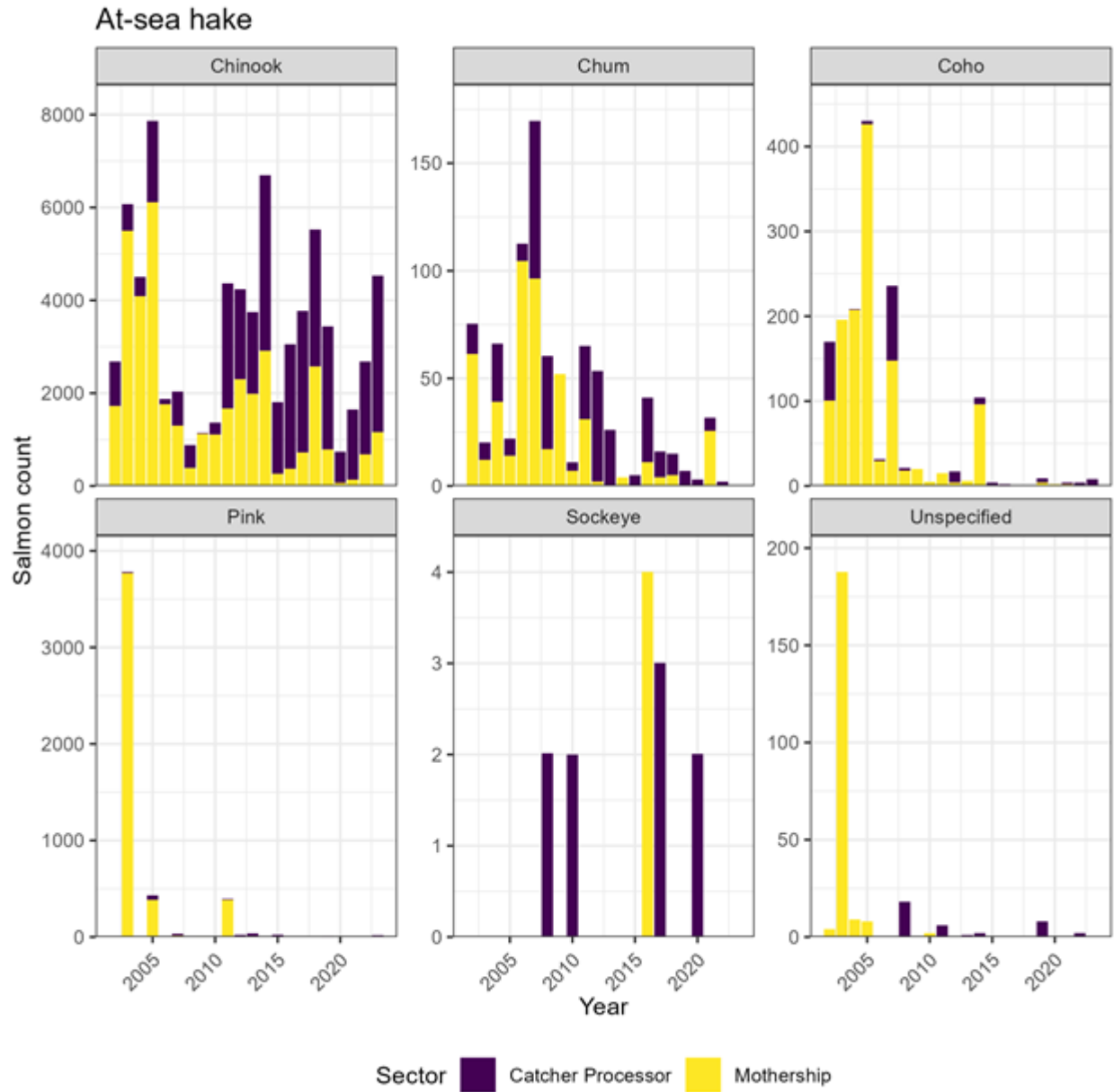


Figure 4. Salmon bycatch in the at-sea hake fishery 2002–23. This sector has full observer coverage. Data from the tribal mothership sector (active prior to 2013) are included here, excepting 2012 for confidentiality reasons.

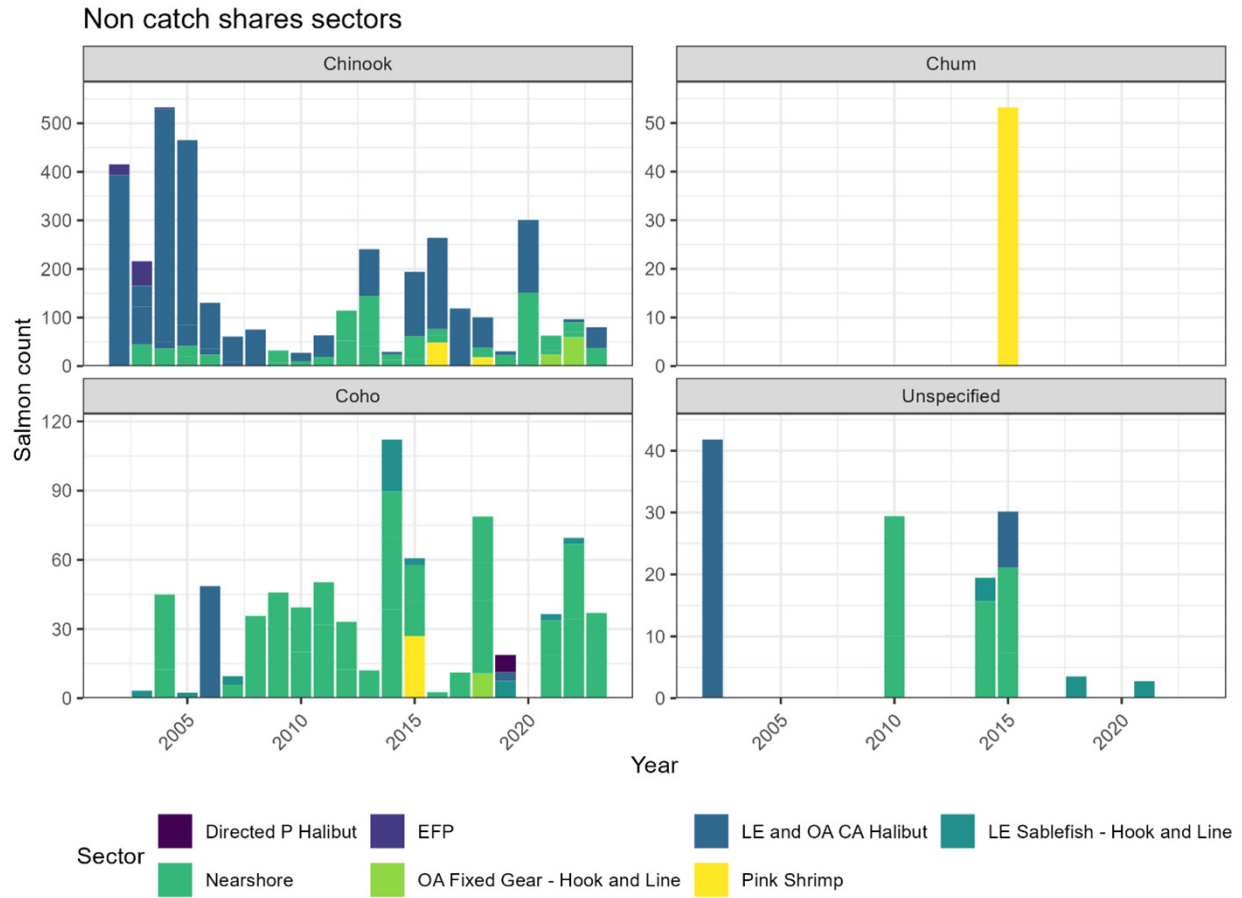


Figure 5. Estimated salmon bycatch in observed non catch shares sectors (excluding limited entry trawl), 2002–23.

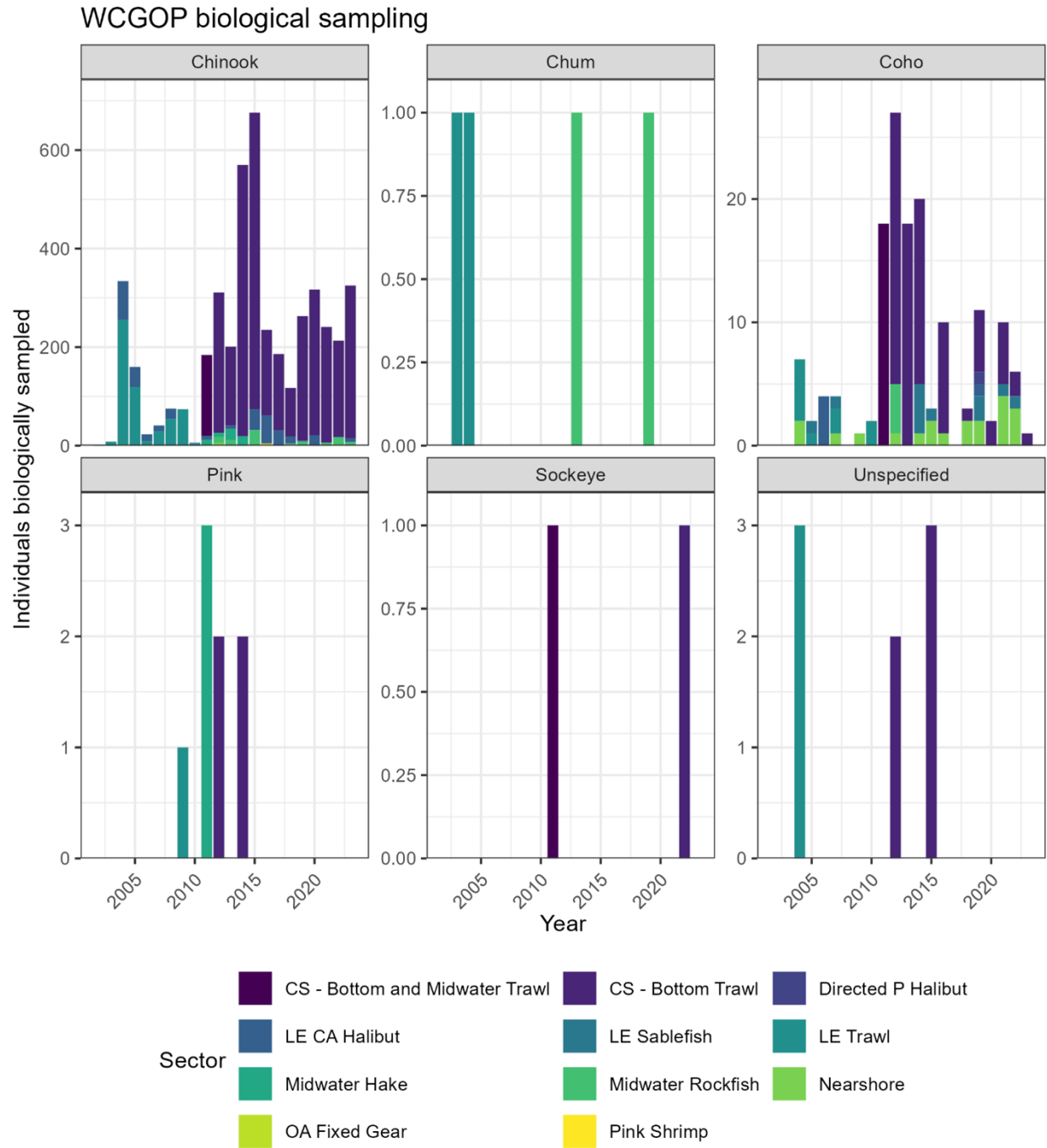


Figure 6. Number of salmon biologically sampled by WCGOP observers 2002–23.

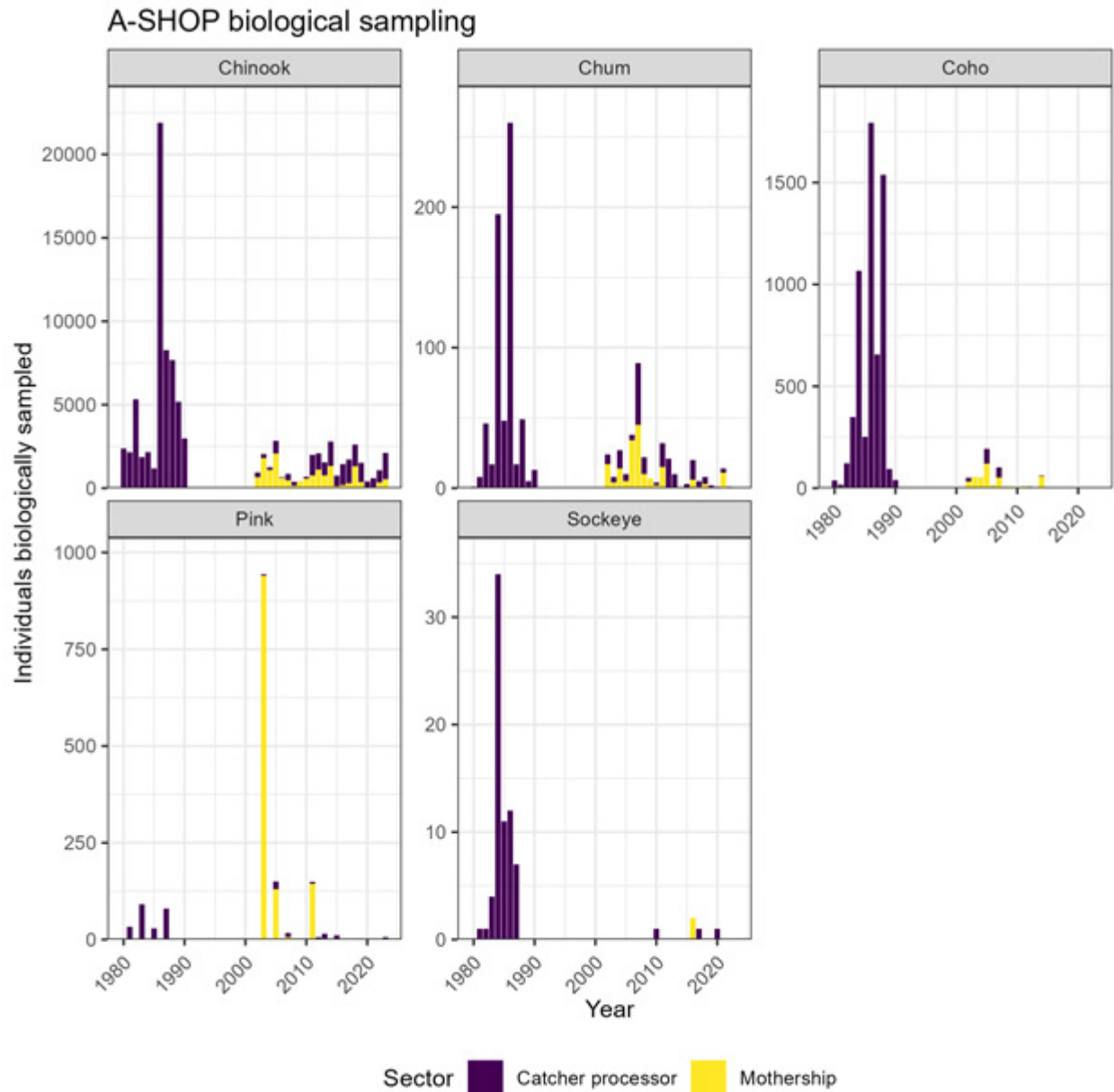


Figure 7. Number of salmon biologically sampled by A-SHOP observers, 1980–2023. Note that while fewer salmon have been sampled in recent years, more samples are taken per individual fish, so the total number of samples is larger than the number of individuals sampled.

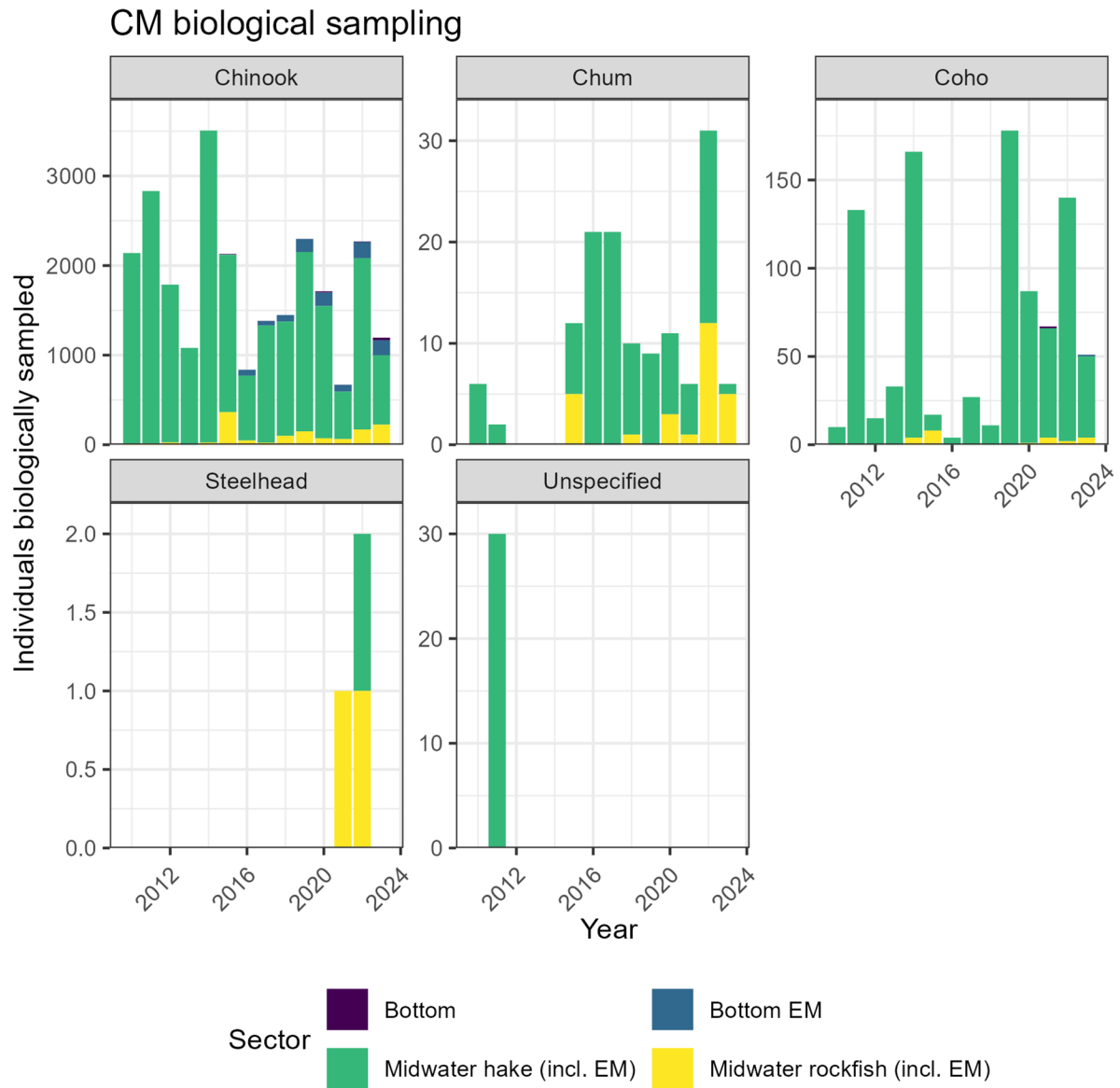


Figure 8. Number of salmon biologically sampled by the CM program, 2010–23.

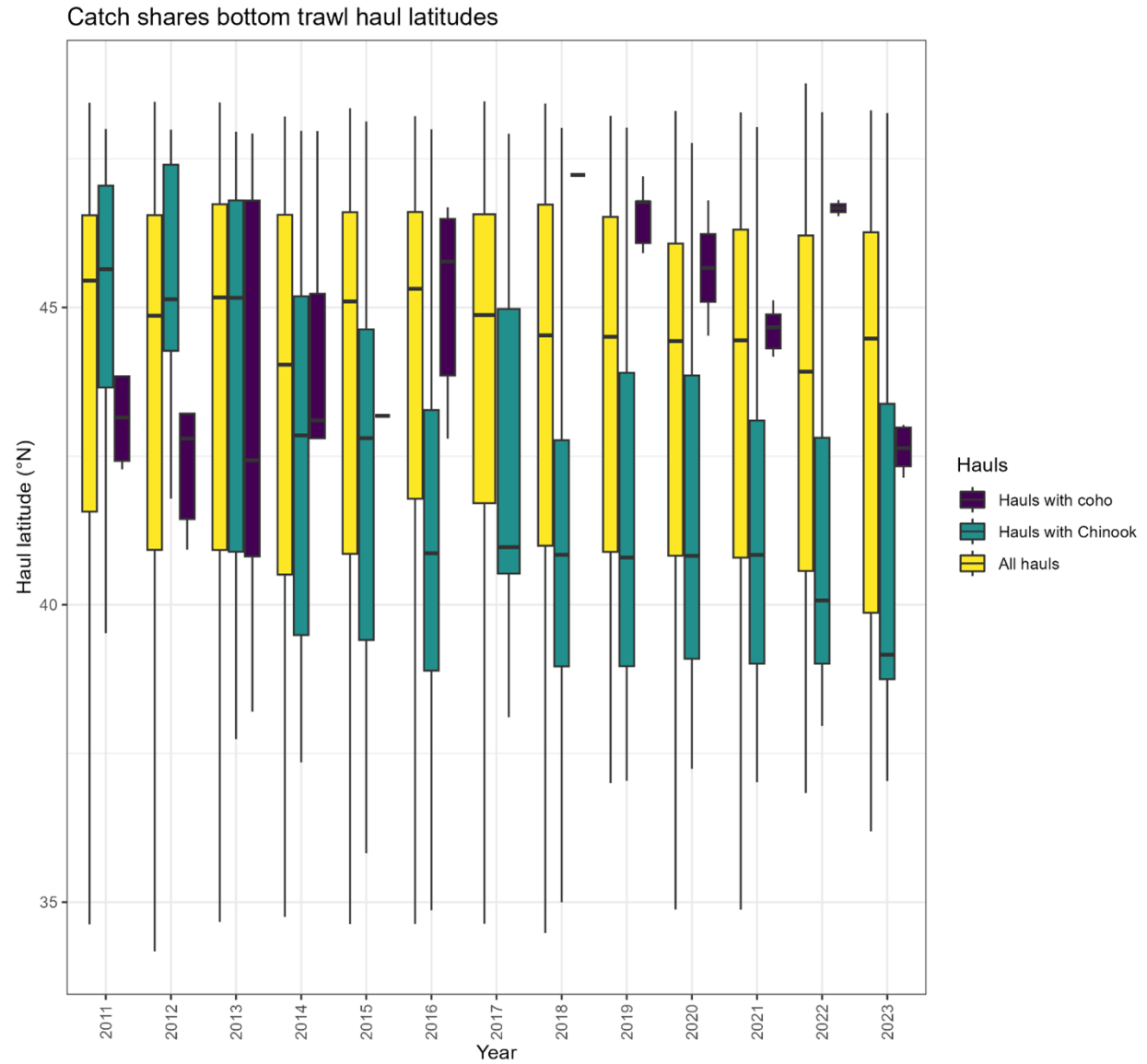


Figure 9. Boxplot of haul latitudes in the catch share bottom trawl fishery. Outliers are not shown.

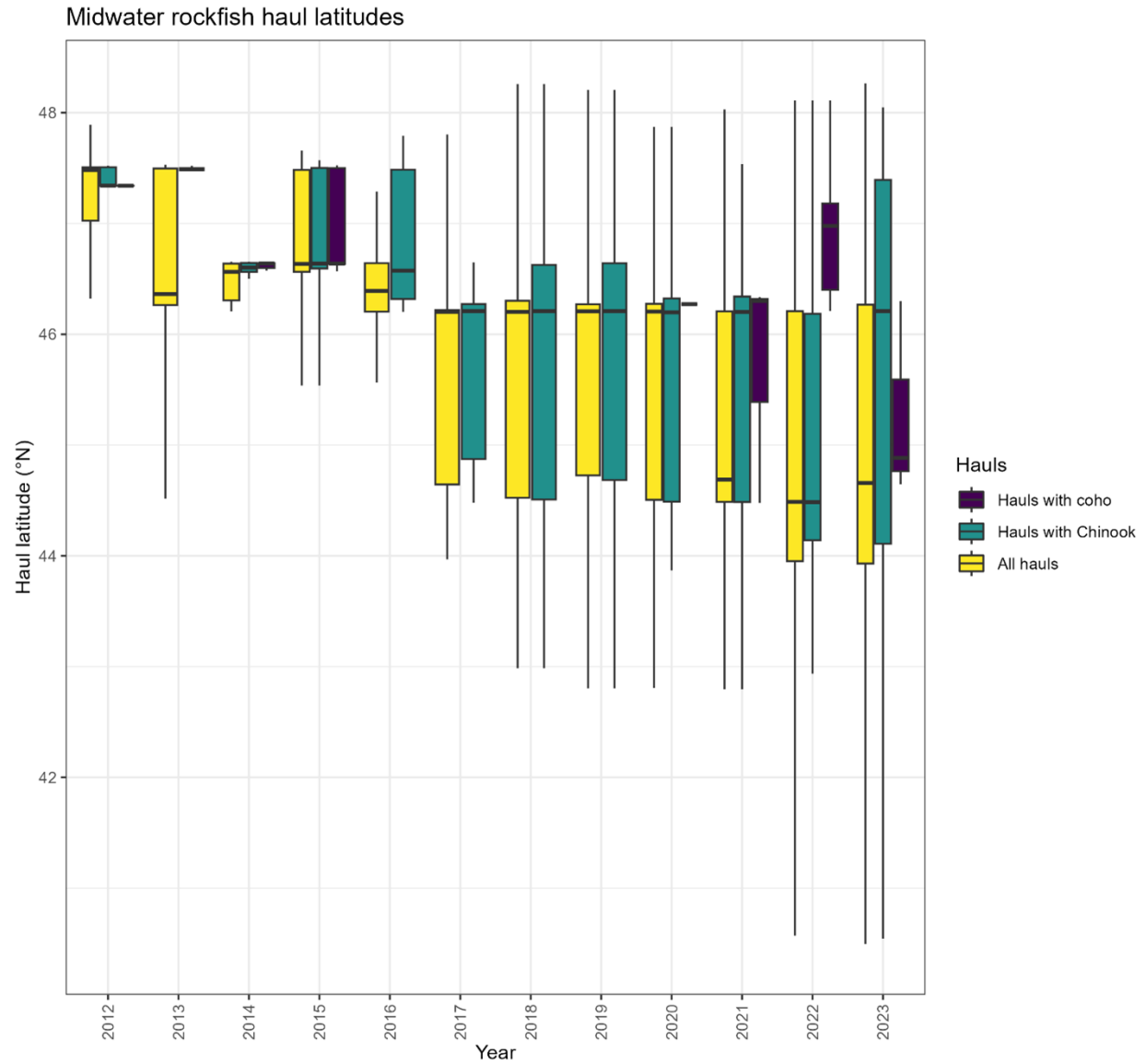


Figure 10. Boxplot of haul latitudes in the midwater rockfish trawl fishery. Outliers are not shown.

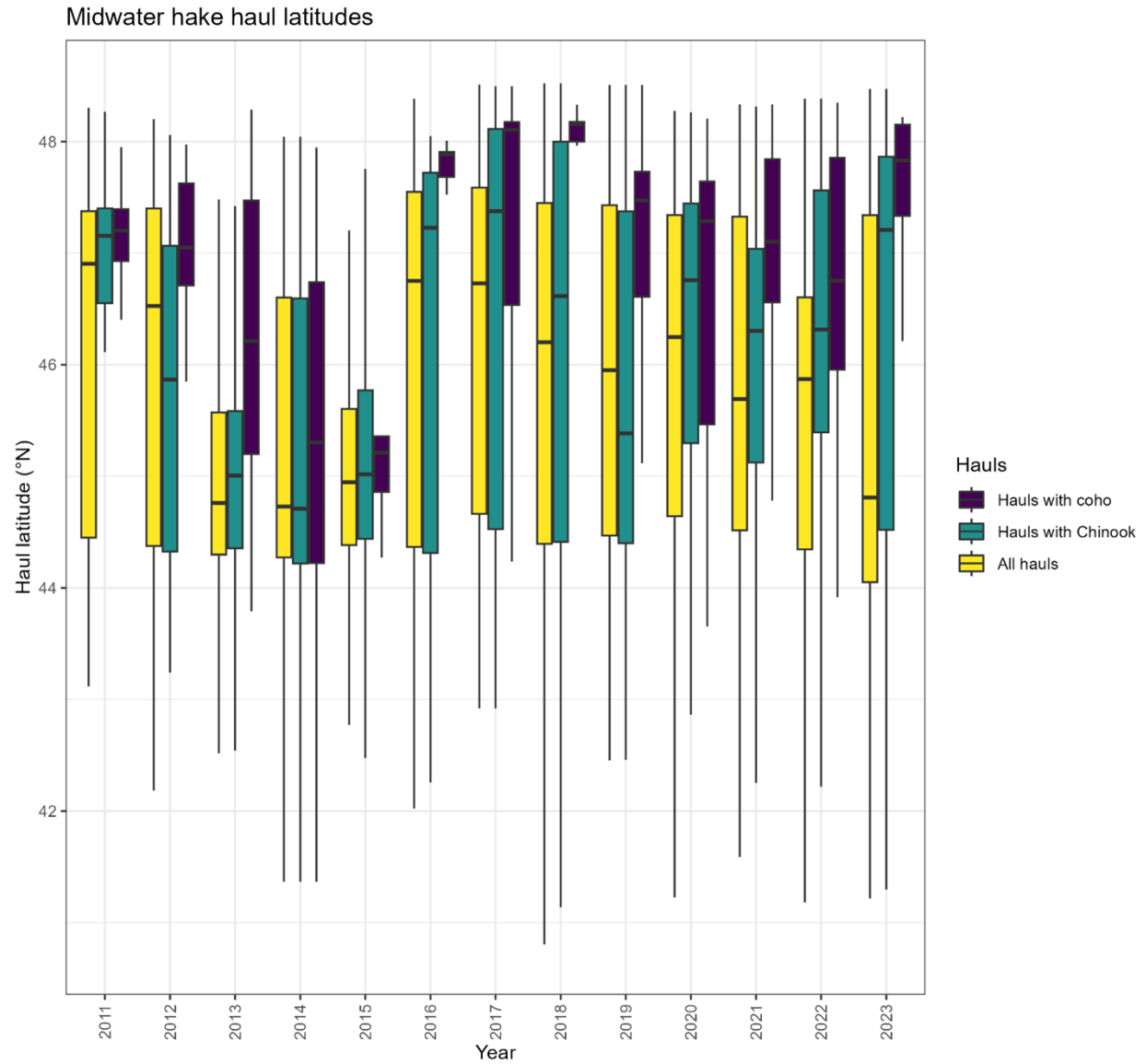


Figure 11. Boxplot of haul latitudes in the midwater hake trawl fishery. Outliers are not shown.

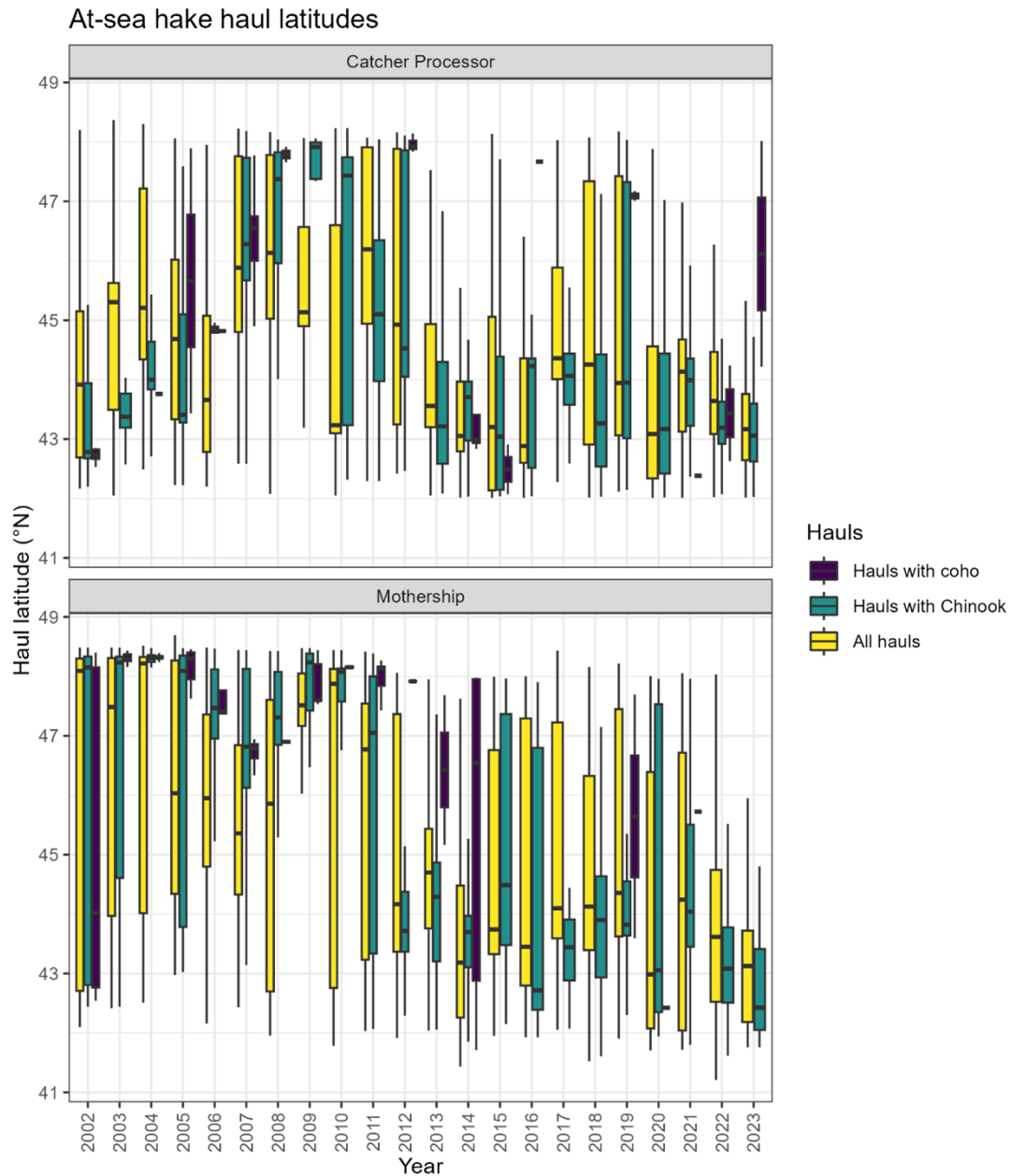


Figure 12. Boxplot of haul latitudes in the at-sea hake fishery. Outliers are not shown.

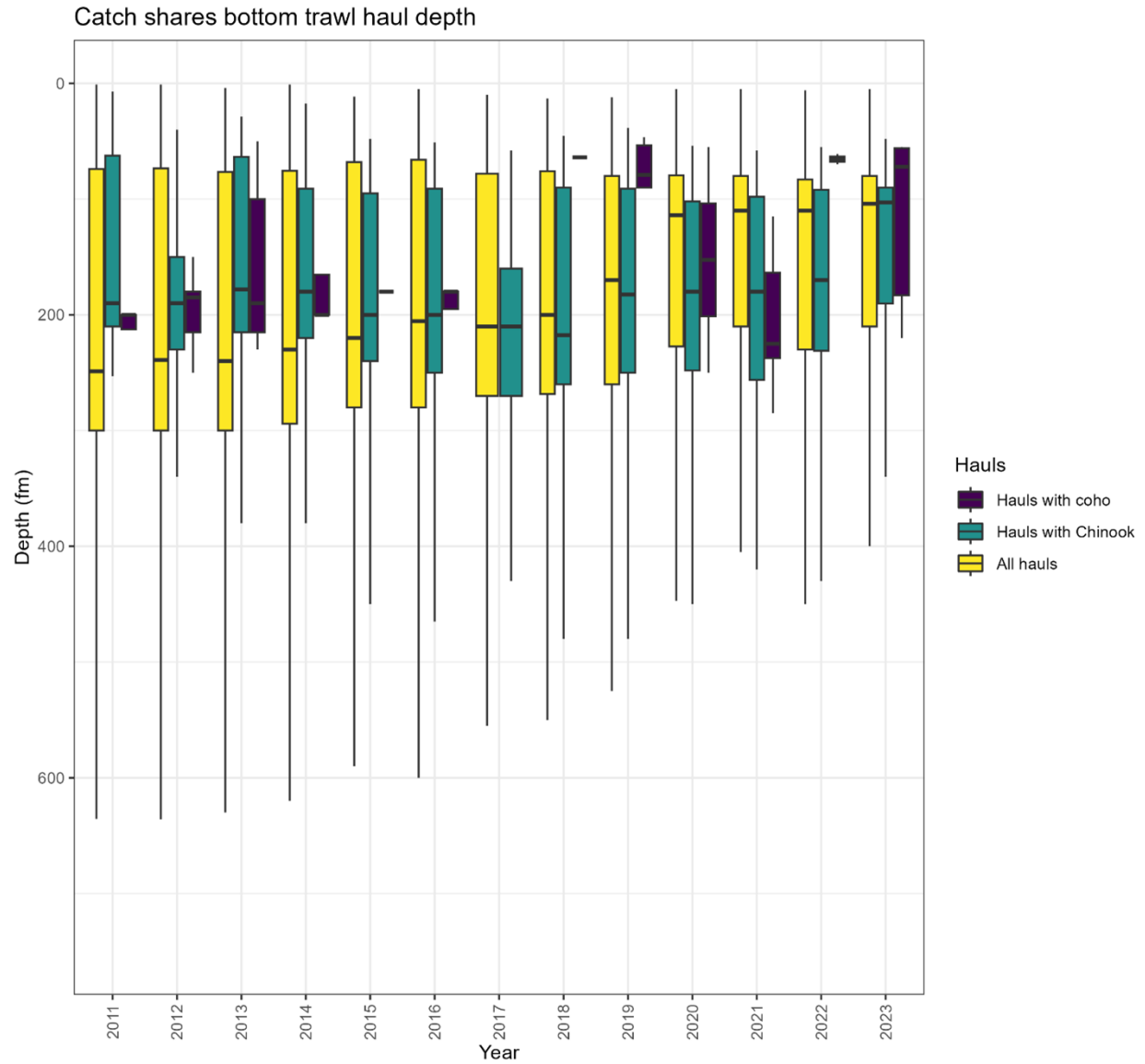


Figure 13. Boxplot of haul bottom depths in the catch share bottom trawl fishery. Outliers are not shown.

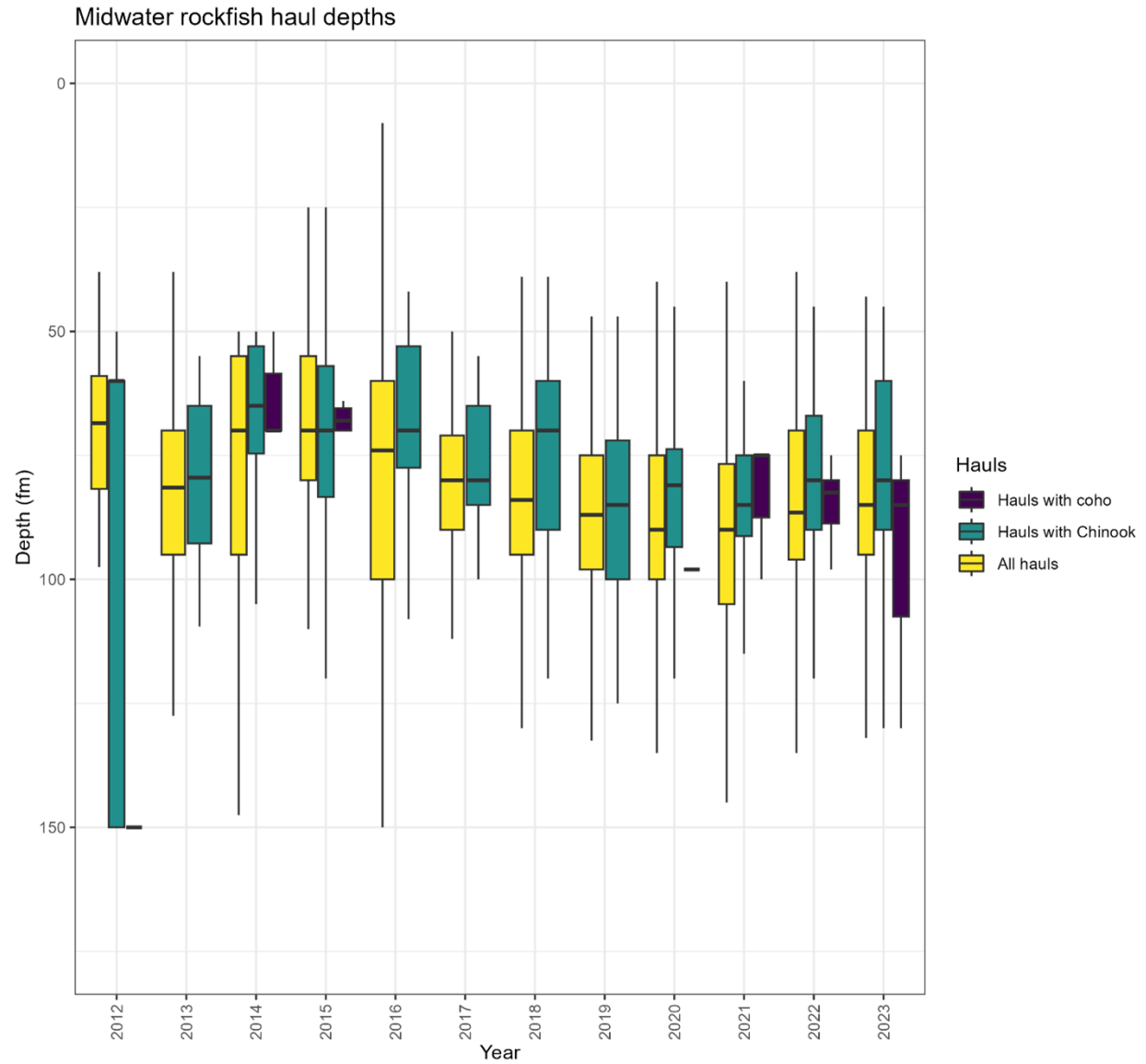


Figure 14. Boxplot of haul depths in the midwater rockfish trawl fishery. Outliers are not shown.

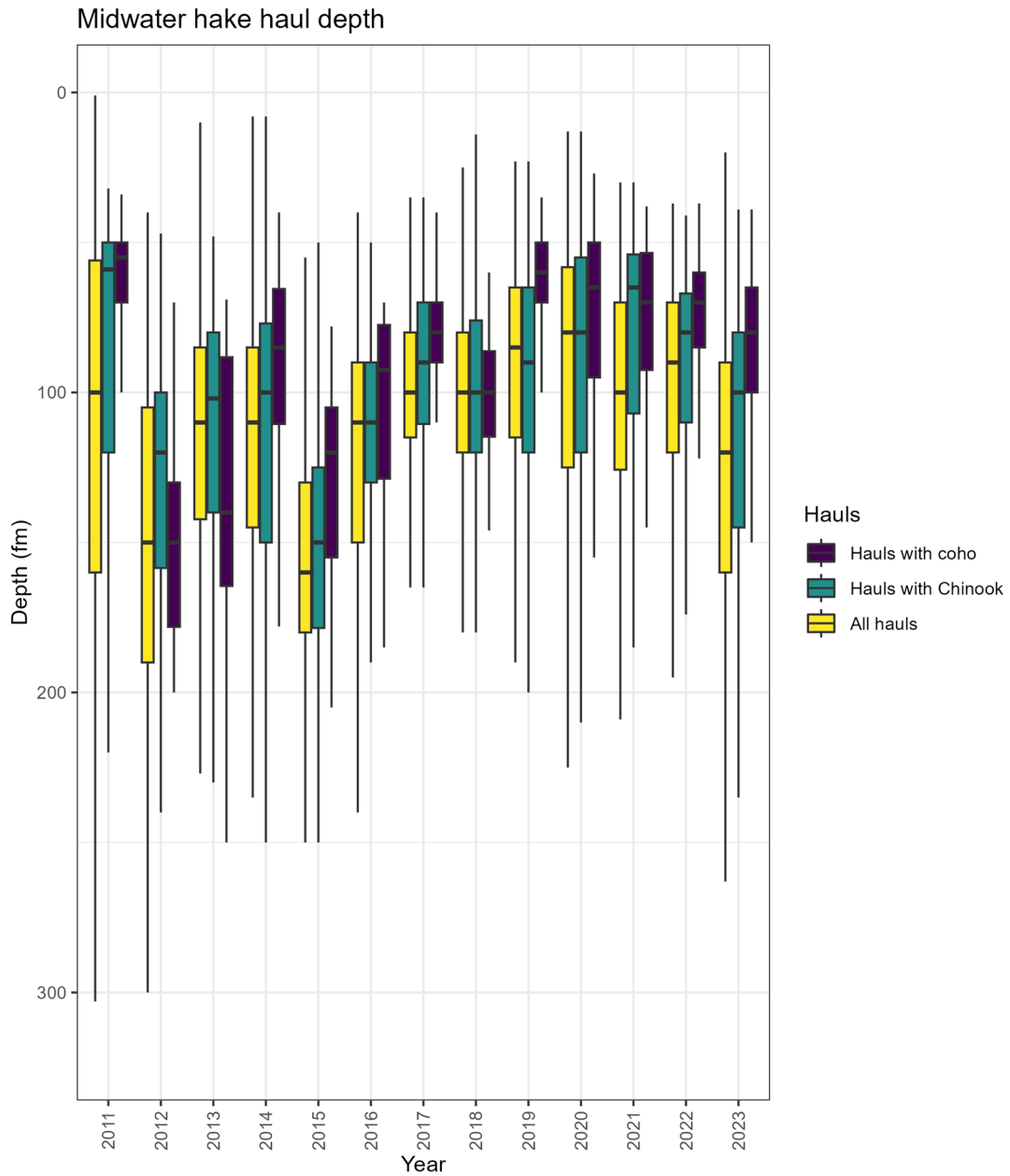


Figure 15. Boxplot of haul depths in the midwater hake trawl fishery. Outliers are not shown.

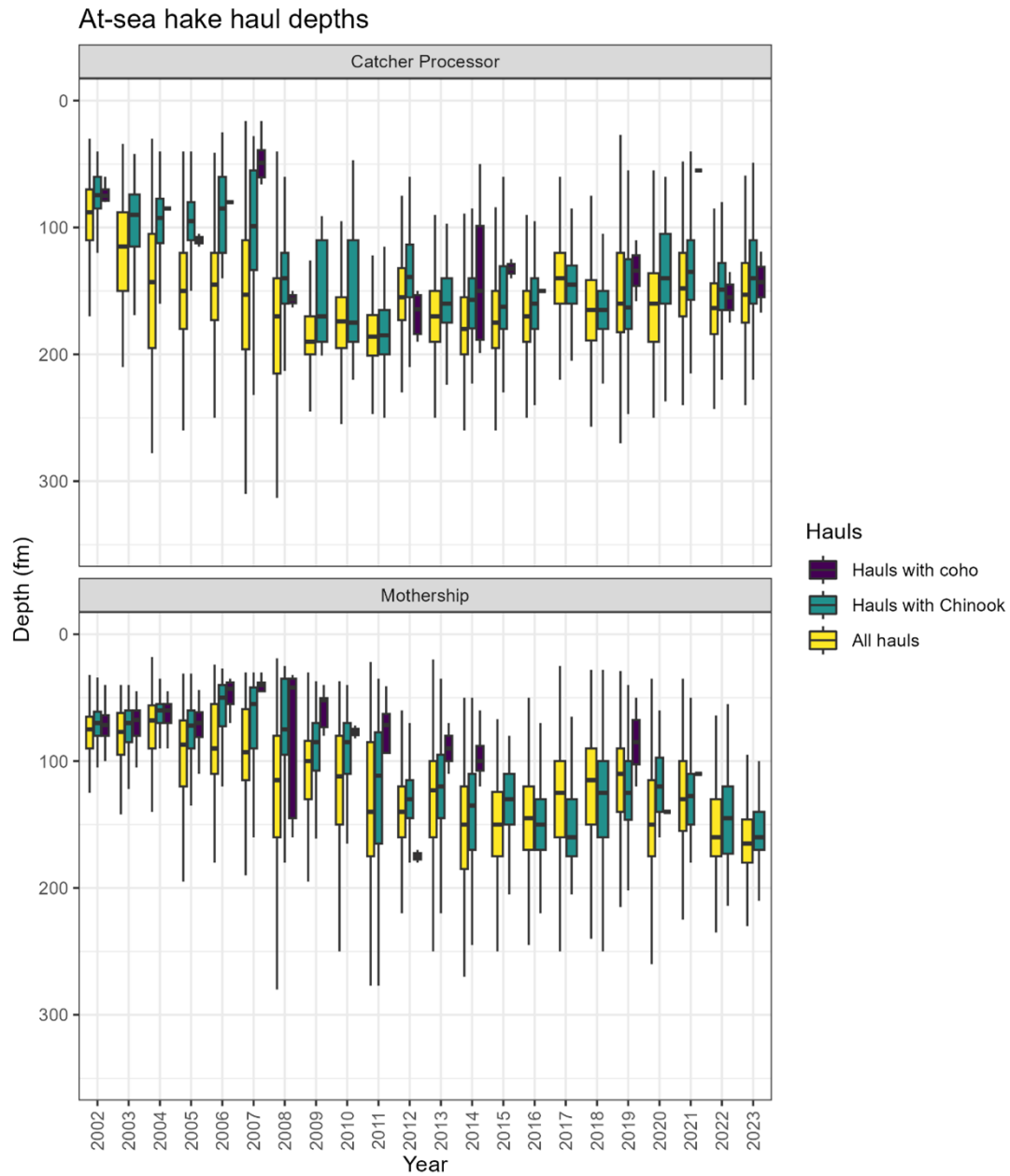


Figure 16. Boxplot of haul depths in the at-sea hake fishery. Outliers are not shown.

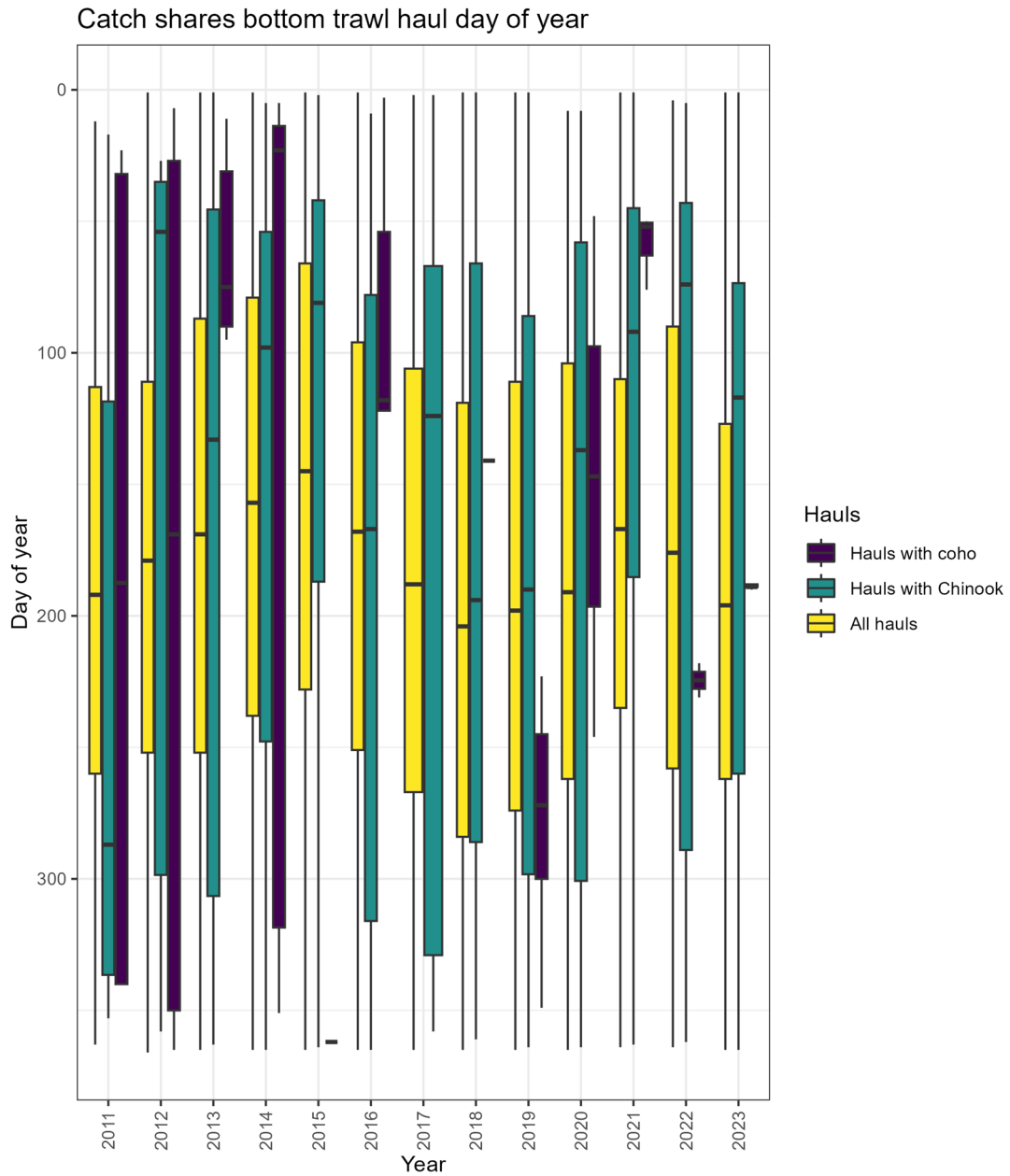


Figure 17. Boxplot of haul day of year in the catch share bottom trawl fishery. Outliers are not shown.

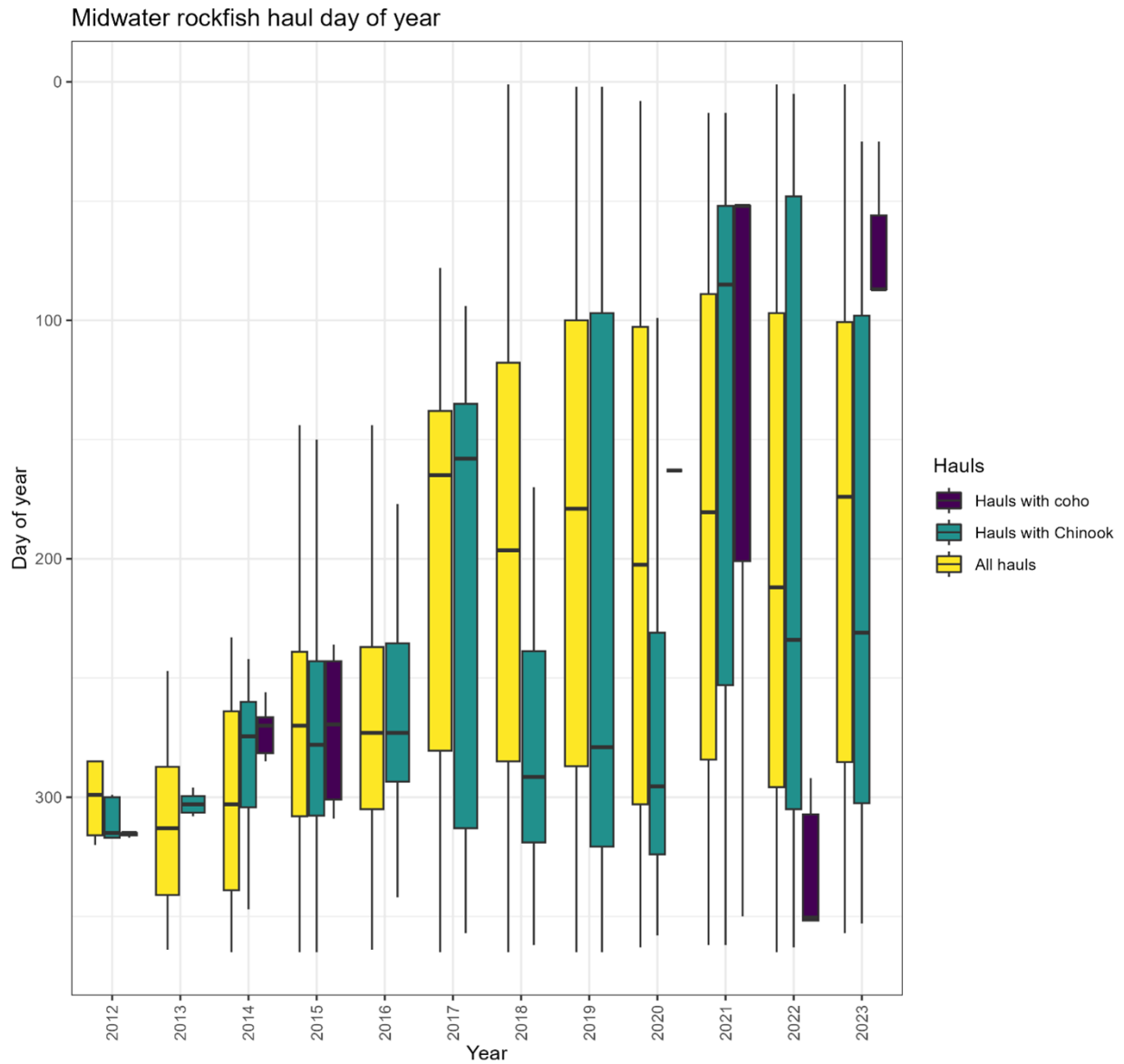


Figure 18. Boxplot of haul day of year in the midwater rockfish trawl fishery. Outliers are not shown.

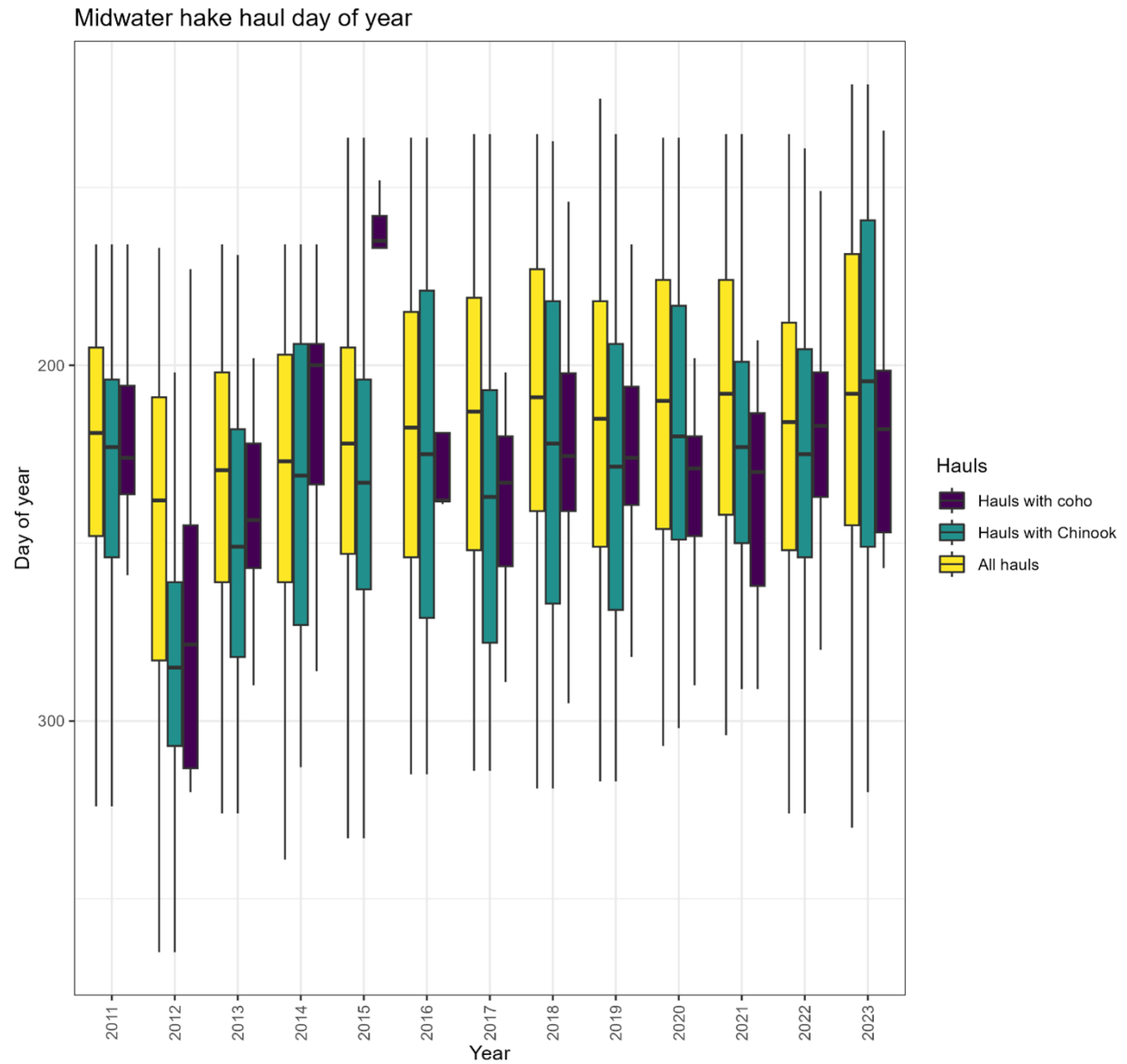


Figure 19. Boxplot of haul day of year in the midwater hake trawl fishery. Outliers are not shown.

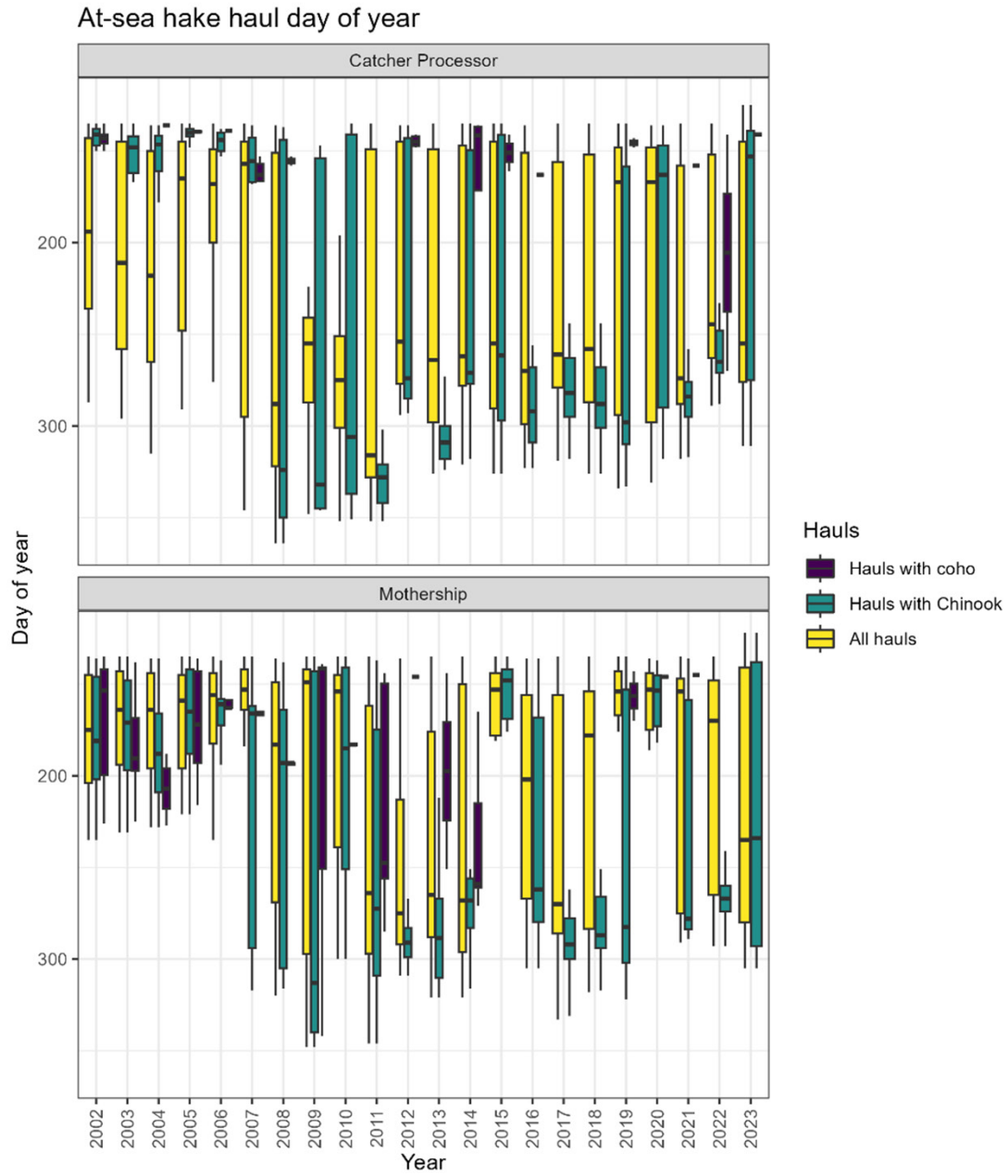


Figure 20. Boxplot of haul day of year in the at-sea hake fishery. Outliers are not shown.

References

- Somers, K. A., M.A. Bellman, J.E. Jannot, Y.-W. Lee, J. McVeigh, and V. Tuttle. 2015. Observed and estimated total bycatch of salmon in the 2002-2013 U.S. west coast fisheries. West Coast Groundfish Observer Program. National Marine Fisheries Service, NWFSC, 2725 Montlake Blvd E., Seattle, WA 98112.
- Somers, K.A., K.E. Richerson, V.J. Tuttle, N.B. Riley, and J.T. McVeigh. 2024a. Estimated discard and catch of groundfish species in the 2023 U.S. west coast fisheries. NOAA technical memorandum NMFS-NWFSC-199.
- Somers, K. A., K. E. Richerson, V. J. Tuttle, and J. T. McVeigh. 2024b. Fisheries Observation Science Program Coverage Rates, 2002–23. U.S. Department of Commerce, NOAA Data Report NMFS-NWFSC-DR-2024-03.



U.S. Secretary of Commerce
Howard Lutnick

Under Secretary of Commerce
for Oceans and Atmosphere
Dr. Neil Jacobs

Assistant Administrator for Fisheries
Eugenio Piñeiro Soler

December 2025

fisheries.noaa.gov

OFFICIAL BUSINESS

National Marine
Fisheries Service
Northwest Fisheries Science Center
2725 Montlake Boulevard East
Seattle, Washington 98112