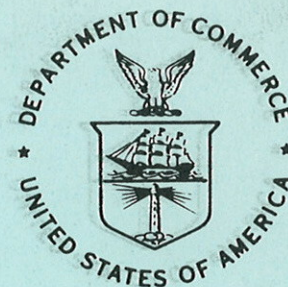


QC
995
.U68
no.175
c.2

6/21/82

NOAA Technical Memorandum NWS WR-175



ANNUAL DATA AND VERIFICATION TABULATION
EASTERN NORTH PACIFIC TROPICAL STORMS AND HURRICANES 1981

Salt Lake City, Utah
June 1982

**U.S. DEPARTMENT OF
COMMERCE**

National Oceanic and
Atmospheric Administration

National Weather
Service



NOAA TECHNICAL MEMORANDA
National Weather Service, Western Region Subseries

The National Weather Service (NWS) Western Region (WR) Subseries provides an informal medium for the documentation and quick dissemination of results not appropriate, or not yet ready, for formal publication. The series is used to report on work in progress, to describe technical procedures and practices, or to relate progress to a limited audience. These Technical Memoranda will report on investigations devoted primarily to regional and local problems of interest mainly to personnel, and hence will not be widely distributed.

Papers 1 to 25 are in the former series, ESSA Technical Memoranda, Western Region Technical Memoranda (WRTM); papers 24 to 59 are in the former series, ESSA Technical Memoranda, Weather Bureau Technical Memoranda (WBTM). Beginning with 60, the papers are part of the series, NOAA Technical Memoranda. Out-of-print memoranda are not listed.

Papers 2 to 22, except for 5 (revised edition), are available from the National Weather Service Western Region, Scientific Services Division, P. O. Box 11188, Federal Building, 125 South State Street, Salt Lake City, Utah 84147. Paper 5 (revised edition), and all others beginning with 25 are available from the National Technical Information Service, U. S. Department of Commerce, Sillis Building, 5285 Port Royal Road, Springfield, Virginia 22151. Prices vary for all paper copy; \$3.50 microfiche. Order by accession number shown in parentheses at end of each entry.

ESSA Technical Memoranda (WRTM)

- 2 Climatological Precipitation Probabilities. Compiled by Lucianne Miller, December 1965.
- 3 Western Region Pre- and Post-PP-3 Program, December 1, 1965, to February 20, 1966. Edward D. Diemer, March 1966.
- 5 Station Descriptions of Local Effects on Synoptic Weather Patterns. Philip Williams, Jr., April 1966 (revised November 1967, October 1969). (PB-17800)
- 8 Interpreting the RAREP. Herbert P. Benner, May 1966 (revised January 1967).
- 11 Some Electrical Processes in the Atmosphere. J. Latham, June 1966.
- 17 A Digitalized Summary of Radar Echoes within 100 Miles of Sacramento, California. J. A. Youngberg and L. B. Overaas, December 1966.
- 21 An Objective Aid for Forecasting the End of East Winds in the Columbia Gorge, July through October. D. John Coparanis, April 1967.
- 22 Derivation of Radar Horizons in Mountainous Terrain. Roger G. Pappas, April 1967.

ESSA Technical Memoranda, Weather Bureau Technical Memoranda (WBTM)

- 25 Verification of Operational Probability of Precipitation Forecasts, April 1966-March 1967. W. W. Dickey, October 1967. (PB-176240)
- 26 A Study of Winds in the Lake Mead Recreation Area. R. P. Augulis, January 1968. (PB-177830)
- 28 Weather Extremes. R. J. Schmidli, April 1968 (revised February 1981).
- 29 Small-Scale Analysis and Prediction. Philip Williams, Jr., May 1968. (PB-178425)
- 30 Numerical Weather Prediction and Synoptic Meteorology. Capt. Thomas D. Murphy, U.S.A.F., May 1968. (AD-673365)
- 31 Precipitation Detection Probabilities by Salt Lake ARTC Radars. Robert K. Belesky, July 1968. (PB-179084)
- 32 Probability Forecasting--A Problem Analysis with Reference to the Portland Fire Weather District. Harold S. Ayer, July 1968. (PB-179289)
- 35 Joint ESSA/FAA ARTC Radar Weather Surveillance Program. Herbert P. Benner and DeVon B. Smith, December 1968 (revised June 1970). AD-681857)
- 36 Temperature Trends in Sacramento--Another Heat Island. Anthony D. Lentini, February 1969. (PB-183055)
- 37 Disposal of Logging Residues without Damage to Air Quality. Owen P. Cramer, March 1969. (PB-183057)
- 39 Upper-Air Lows over Northwestern United States. A. L. Jacobson, April 1969. (PB-184296)
- 40 The Man-Machine Mix in Applied Weather Forecasting in the 1970's. L. W. Snellman, August 1969. (PB-185068)
- 42 Analysis of the Southern California Santa Ana of January 15-17, 1966. Barry B. Aronovitch, August 1969. (PB-185670)
- 43 Forecasting Maximum Temperatures at Helena, Montana. David E. Olsen, October 1969. (PB-185762)
- 44 Estimated Return Periods for Short-Duration Precipitation in Arizona. Paul C. Kangieser, October 1969. (PB-187763)
- 46 Applications of the Net Radiometer to Short-Range Fog and Stratus Forecasting at Eugene, Oregon. L. Yee and E. Bates, December 1969. (PB-190476)
- 47 Statistical Analysis as a Flood Routing Tool. Robert J. C. Burnash, December 1969. (PB-188744)
- 48 Tsunami. Richard P. Augulis, February 1970. (PB-190157)
- 49 Predicting Precipitation Type. Robert J. C. Burnash and Floyd E. Hug, March 1970. (PB-190962)
- 50 Statistical Report on Aeroallergens (Pollens and Molds) Fort Huachuca, Arizona, 1969. Wayne S. Johnson, April 1970. (PB-191743)
- 51 Western Region Sea and Surf Forecaster's Manual. Gordon C. Shields and Gerald B. Burdwell, July 1970. (PB-193102)
- 52 Sacramento Weather Radar Climatology. R. G. Pappas and C. M. Veliouette, July 1970. (PB-193347)
- 54 A Refinement of the Vorticity Field to Delineate Areas of Significant Precipitation. Barry B. Aronovitch, August 1970.
- 55 Application of the SSARR Model to a Basin without Discharge Record. Vail Schermerhorn and Donald W. Kuehl, August 1970. (PB-194394)
- 56 Areal Coverage of Precipitation in Northwestern Utah. Philip Williams, Jr., and Werner J. Heck, September 1970. (PB-194389)
- 57 Preliminary Report on Agricultural Field Burning vs. Atmospheric Visibility in the Willamette Valley of Oregon. Earl M. Bates and David O. Chilcote, September 1970. (PB-194710)
- 58 Air Pollution by Jet Aircraft at Seattle-Tacoma Airport. Wallace R. Donaldson, October 1970. (COM-71-00017)
- 59 Application of PE Model Forecast Parameters to Local-Area Forecasting. Leonard W. Snellman, October 1970. (COM-71-00016)

NOAA Technical Memoranda (NWS WR)

- 60 An Aid for Forecasting the Minimum Temperature at Medford, Oregon. Arthur W. Fritz, October 1970. (COM-71-00120)
- 63 700-mb Warm Air Advection as a Forecasting Tool for Montana and Northern Idaho. Norris E. Woerner, February 1971. (COM-71-00349)
- 64 Wind and Weather Regimes at Great Falls, Montana. Warren B. Price, March 1971.
- 66 A Preliminary Report on Correlation of ARTCC Radar Echoes and Precipitation. Wilbur K. Hall, June 1971. (COM-71-00829)
- 69 National Weather Service Support to Soaring Activities. Ellis Burton, August 1971. (COM-71-00956)
- 71 Western Region Synoptic Analysis-Problems and Methods. Philip Williams, Jr., February 1972. (COM-72-10433)
- 74 Thunderstorms and Hail Days Probabilities in Nevada. Clarence M. Sakamoto, April 1972. (COM-72-10554)
- 75 A Study of the Low Level Jet Stream of the San Joaquin Valley. Ronald A. Willis and Philip Williams, Jr., May 1972. (COM-72-10707)
- 76 Monthly Climatological Charts of the Behavior of Fog and Low Stratus at Los Angeles International Airport. Donald M. Gales, July 1972. (COM-72-11140)
- 77 A Study of Radar Echo Distribution in Arizona During July and August. John E. Hales, Jr., July 1972. (COM-72-11136)
- 78 Forecasting Precipitation at Bakersfield, California, Using Pressure Gradient Vectors. Earl T. Riddiough, July 1972. (COM-72-11146)
- 79 Climate of Stockton, California. Robert C. Nelson, July 1972. (COM-72-10920)
- 80 Estimation of Number of Days Above or Below Selected Temperatures. Clarence M. Sakamoto, October 1972. (COM-72-10021)
- 81 An Aid for Forecasting Summer Maximum Temperatures at Seattle, Washington. Edgar G. Johnson, November 1972. (COM-73-10150)
- 82 Flash Flood Forecasting and Warning Program in the Western Region. Philip Williams, Jr., Chester L. Glenn, and Roland L. Raetz, December 1972, (revised March 1978). (COM-73-10251)
- 83 A Comparison of Manual and Semiautomatic Methods of Digitizing Analog Wind Records. Glenn E. Rasch, March 1973. (COM-73-10669)
- 86 Conditional Probabilities for Sequences of Wet Days at Phoenix, Arizona. Paul C. Kangieser, June 1973. (COM-73-11264)
- 87 A Refinement of the Use of K-Values in Forecasting Thunderstorms in Washington and Oregon. Robert Y. G. Lee, June 1973. (COM-73-11276)
- 89 Objective Forecast Precipitation over the Western Region of the United States. Julia N. Paegle and Larry P. Kierulff, Sept. 1973. (COM-73-11946/3AS)
- 91 Arizona "Eddy" Tornadoes. Robert S. Ingram, October 1973. (COM-73-10465)
- 92 Smoke Management in the Willamette Valley. Earl M. Bates, May 1974. (COM-74-11277/AS)
- 93 An Operational Evaluation of 500-mb Type Regression Equations. Alexander E. MacDonald, June 1974. (COM-74-11407/AS)
- 94 Conditional Probability of Visibility Less than One-Half Mile in Radiation Fog at Fresno, California. John D. Thomas, August 1974. (COM-74-11555/AS)
- 96 Map Type Precipitation Probabilities for the Western Region. Glenn E. Rasch and Alexander E. MacDonald, February 1975. (COM-75-10428/AS)
- 97 Eastern Pacific Cut-Off Low of April 21-28, 1974. William J. Alder and George R. Miller, January 1976. (PB-250-711/AS)
- 98 Study on a Significant Precipitation Episode in Western United States. Ira S. Brenner, April 1976. (COM-75-10719/AS)
- 99 A Study of Flash Flood Susceptibility--A Basin in Southern Arizona. Gerald Williams, August 1975. (COM-75-11360/AS)
- 102 A Set of Rules for Forecasting Temperatures in Napa and Sonoma Counties. Wesley L. Tuft, October 1975. (PB-246-902/AS)
- 103 Application of the National Weather Service Flash-Flood Program in the Western Region. Gerald Williams, January 1976. (PB-253-053/AS)
- 104 Objective Aids for Forecasting Minimum Temperatures at Reno, Nevada, During the Summer Months. Christopher D. Hill, January 1976. (PB-252-866/AS)
- 105 Forecasting the Mono Wind. Charles P. Ruscha, Jr., February 1976. (PB-254-650)
- 106 Use of MOS Forecast Parameters in Temperature Forecasting. John C. Plankinton, Jr., March 1976. (PB-254-649)
- 107 Map Types as Aids in Using MOS PoPs in Western United States. Ira S. Brenner, August 1976. (PB-259-594)
- 108 Other Kinds of Wind Shear. Christopher D. Hill, August 1976. (PB-260-437/AS)
- 109 Forecasting North Winds in the Upper Sacramento Valley and Adjoining Forests. Christopher E. Fontana, September 1976. (PB-273-677/AS)
- 110 Cool Inflow as a Weakening Influence on Eastern Pacific Tropical Cyclones. William J. Denney, November 1976. (PB-264-655/AS)
- 112 The MAN/MOS Program. Alexander E. MacDonald, February 1977. (PB-265-941/AS)
- 113 Winter Season Minimum Temperature Formula for Bakersfield, California, Using Multiple Regression. Michael J. Oard, February 1977. (PB-273-694/AS)
- 114 Tropical Cyclone Kathleen. James R. Fors, February 1977. (PB-273-676/AS)
- 116 A Study of Wind Gusts on Lake Mead. Bradley Colman, April 1977. (PB-268-847)
- 117 The Relative Frequency of Cumulonimbus Clouds at the Nevada Test Site as a Function of K-Value. R. F. Quiring, April 1977. (PB-272-831)
- 118 Moisture Distribution Modification by Upward Vertical Motion. Ira S. Brenner, April 1977. (PB-268-740)
- 119 Relative Frequency of Occurrence of Warm Season Echo Activity as a Function of Stability Indices Computed from the Yucca Flat, Nevada, Rawinsonde. Darryl Randerson, June 1977. (PB-271-290/AS)

- 121 Climatological Prediction of Cumulonimbus Clouds in the Vicinity of the Yucca Flat Weather Station. R. F. Quiring, June 1977. (PB-271-704/AS)
- 122 A Method for Transforming Temperature Distribution to Normality. Morris S. Webb, Jr., June 1977. (PB-271-742/AS)
- 124 Statistical Guidance for Prediction of Eastern North Pacific Tropical Cyclone Motion - Part I. Charles J. Neumann and Preston W. Leftwich, August 1977. (PB-272-661)
- 125 Statistical Guidance on the Prediction of Eastern North Pacific Tropical Cyclone Motion - Part II. Preston W. Leftwich and Charles J. Neumann, August 1977. (PB-273-155/AS)
- 127 Development of a Probability Equation for Winter-Type Precipitation Patterns in Great Falls, Montana. Kenneth B. Mielke, February 1978. (PB-281-387/AS)
- 128 Hand Calculator Program to Compute Parcel Thermal Dynamics. Dan Gudge, April 1978. (PB-283-080/AS)
- 129 Fire Whirls. David W. Goens, May 1978. (PB-283-866/AS)
- 130 Flash-Flood Procedure. Ralph C. Hatch and Gerald Williams, May 1978. (PB-286-014/AS)
- 131 Automated Fire-Weather Forecasts. Mark A. Mollner and David E. Olsen, September 1978. (PB-289-916/AS)
- 132 Estimates of the Effects of Terrain Blocking on the Los Angeles WSR-74C Weather Radar. R. G. Pappas, R. Y. Lee, B. W. Finke, October 1978. (PB289767/AS)
- 133 Spectral Techniques in Ocean Wave Forecasting. John A. Jannuzzi, October 1978. (PB291317/AS)
- 134 Solar Radiation. John A. Jannuzzi, November 1978. (PB291195/AS)
- 135 Application of a Spectrum Analyzer in Forecasting Ocean Swell in Southern California Coastal Waters. Lawrence P. Kierulff, January 1979. (PB292716/AS)
- 136 Basic Hydrologic Principles. Thomas L. Dietrich, January 1979. (PB292247/AS)
- 137 LFM 24-Hour Prediction of Eastern Pacific Cyclones Refined by Satellite Images. John R. Zimmerman and Charles P. Ruscha, Jr., Jan. 1979. (PB294324/AS)
- 138 A Simple Analysis/Diagnosis System for Real Time Evaluation of Vertical Motion. Scott Heflick and James R. Fors, February 1979. (PB294216/AS)
- 139 Aids for Forecasting Minimum Temperature in the Wenatchee Frost District. Robert S. Robinson, April 1979. (PB298339/AS)
- 140 Influence of Cloudiness on Summertime Temperatures in the Eastern Washington Fire Weather District. James Holcomb, April 1979. (PB298674/AS)
- 141 Comparison of LFM and MFM Precipitation Guidance for Nevada During Doreen. Christopher Hill, April 1979. (PB298613/AS)
- 142 The Usefulness of Data from Mountaintop Fire Lookout Stations in Determining Atmospheric Stability. Jonathan W. Corey, April 1979. (PB298899/AS)
- 143 The Depth of the Marine Layer at San Diego as Related to Subsequent Cool Season Precipitation Episodes in Arizona. Ira S. Brenner, May 1979. (PB298817/AS)
- 144 Arizona Cool Season Climatological Surface Wind and Pressure Gradient Study. Ira S. Brenner, May 1979. (PB298900/AS)
- 145 On the Use of Solar Radiation and Temperature Models to Estimate the Snap Bean Maturity Date in the Willamette Valley. Earl M. Bates, August 1979. (PB80-160971)
- 146 The BART Experiment. Morris S. Webb, October 1979. (PB80-155112)
- 147 Occurrence and Distribution of Flash Floods in the Western Region. Thomas L. Dietrich, December 1979. (PB80-160344)
- 149 Misinterpretations of Precipitation Probability Forecasts. Allan H. Murphy, Sarah Lichtenstein, Baruch Fischhoff, and Robert L. Winkler, February 1980. (PB80-174576)
- 150 Annual Data and Verification Tabulation - Eastern and Central North Pacific Tropical Storms and Hurricanes 1979. Emil B. Gunther and Staff, EPHC, April 1980. (PB80-220486)
- 151 NMC Model Performance in the Northeast Pacific. James E. Overland, PMEL-ERL, April 1980. (PB80-196033)
- 152 Climate of Salt Lake City, Utah. Wilbur E. Figgins, June 1980. (PB80-225493) (Out of print.)
- 153 An Automatic Lightning Detection System in Northern California. James E. Rea and Chris E. Fontana, June 1980. (PB80-225592)
- 154 Regression Equation for the Peak Wind Gust 6 to 12 Hours in Advance at Great Falls During Strong Downslope Wind Storms. Michael J. Oard, July 1980. (PB81-108367)
- 155 A Raininess Index for the Arizona Monsoon. John H. TenHarkel, July 1980. (PB81-106494)
- 156 The Effects of Terrain Distribution on Summer Thunderstorm Activity at Reno, Nevada. Christopher Dean Hill, July 1980. (PB81-102501)
- 157 An Operational Evaluation of the Scofield/Oliver Technique for Estimating Precipitation Rates from Satellite Imagery. Richard Ochoa, August 1980. (PB81-108227)
- 158 Hydrology Practicum. Thomas Dietrich, September 1980. (PB81-134033)
- 159 Tropical Cyclone Effects on California. Arnold Court, October 1980. (PB81-133779)
- 160 Eastern North Pacific Tropical Cyclone Occurrences During Intraseasonal Periods. Preston W. Leftwich and Gail M. Brown, February 1981. (PB81-205494)
- 161 Solar Radiation as a Sole Source of Energy for Photovoltaics in Las Vegas, Nevada, for July and December. Darryl Randerson, April 1981. (PB81-224503)
- 162 A Systems Approach to Real-Time Runoff Analysis with a Deterministic Rainfall-Runoff Model. Robert J. C. Burnash and R. Larry Fernal, April 1981. (PB81-224495)
- 163 A Comparison of Two Methods for Forecasting Thunderstorms at Luke Air Force Base, Arizona. Lt. Colonel Keith R. Cooley, April 1981. (PB81-225393)
- 164 An Objective Aid for Forecasting Afternoon Relative Humidity Along the Washington Cascade East Slopes. Robert S. Robinson, April 1981. (PB81-23078)
- 165 Annual Data and Verification Tabulation, Eastern North Pacific Tropical Storms and Hurricanes 1980. Emil B. Gunther and Staff, May 1981. (PB82-230336)
- 166 Preliminary Estimates of Wind Power Potential at the Nevada Test Site. Howard G. Booth, June 1981. (PB82-127036)
- 167 ARAP User's Guide. Mark Mathewson, July 1981. (revised September 1981). (PB82-196783)
- 168 Forecasting the Onset of Coastal Gales Off Washington-Oregon. John R. Zimmerman and William D. Burton, August 1981. (PB82-127051)
- 169 A Statistical-Dynamical Model for Prediction of Tropical Cyclone Motion in the Eastern North Pacific Ocean. Preston W. Leftwich, Jr., October 1981.
- 170 An Enhanced Plotter for Surface Airways Observations. Andrew J. Spry and Jeffrey L. Anderson, October 1981. (PB82-153883)
- 171 Verification of 72-Hour 500-mb Map-Type Predictions. R. F. Quiring, November 1981. (PB82-158098)
- 172 Forecasting Heavy Snow at Wenatchee, Washington. James W. Holcomb, December 1981. (PB82-177783)
- 173 Central San Joaquin Valley Type Maps. Thomas R. Crossan, December 1981.
- 174 ARAP Test Results. Mark A. Mathewson, December 1981. (PB82-193103)

NOAA SCIENTIFIC AND TECHNICAL PUBLICATIONS

The National Oceanic and Atmospheric Administration was established as part of the Department of Commerce on October 3, 1970. The mission responsibilities of NOAA are to assess the socioeconomic impact of natural and technological changes in the environment and to monitor and predict the state of the solid Earth, the oceans and their living resources, the atmosphere, and the space environment of the Earth.

The major components of NOAA regularly produce various types of scientific and technical information in the following kinds of publications:

PROFESSIONAL PAPERS — Important definitive research results, major techniques, and special investigations.

CONTRACT AND GRANT REPORTS — Reports prepared by contractors or grantees under NOAA sponsorship.

ATLAS — Presentation of analyzed data generally in the form of maps showing distribution of rainfall, chemical and physical conditions of oceans and atmosphere, distribution of fishes and marine mammals, ionospheric conditions, etc.

TECHNICAL SERVICE PUBLICATIONS — Reports containing data, observations, instructions, etc. A partial listing includes data serials; prediction and outlook periodicals; technical manuals, training papers, planning reports, and information serials; and miscellaneous technical publications.

TECHNICAL REPORTS — Journal quality with extensive details, mathematical developments, or data listings.

TECHNICAL MEMORANDUMS — Reports of preliminary, partial, or negative research or technology results, interim instructions, and the like.



Information on availability of NOAA publications can be obtained from:

**ENVIRONMENTAL SCIENCE INFORMATION CENTER (D822)
ENVIRONMENTAL DATA AND INFORMATION SERVICE
NATIONAL OCEANIC AND ATMOSPHERIC ADMINISTRATION
U.S. DEPARTMENT OF COMMERCE**

**6009 Executive Boulevard
Rockville, MD 20852**



NOAA Technical Memorandum NWS WR-175

ANNUAL DATA AND VERIFICATION TABULATION
EASTERN NORTH PACIFIC TROPICAL STORMS AND HURRICANES 1981

Emil B. Gunther and Staff

Eastern Pacific Hurricane Center
San Francisco, California
June 1982

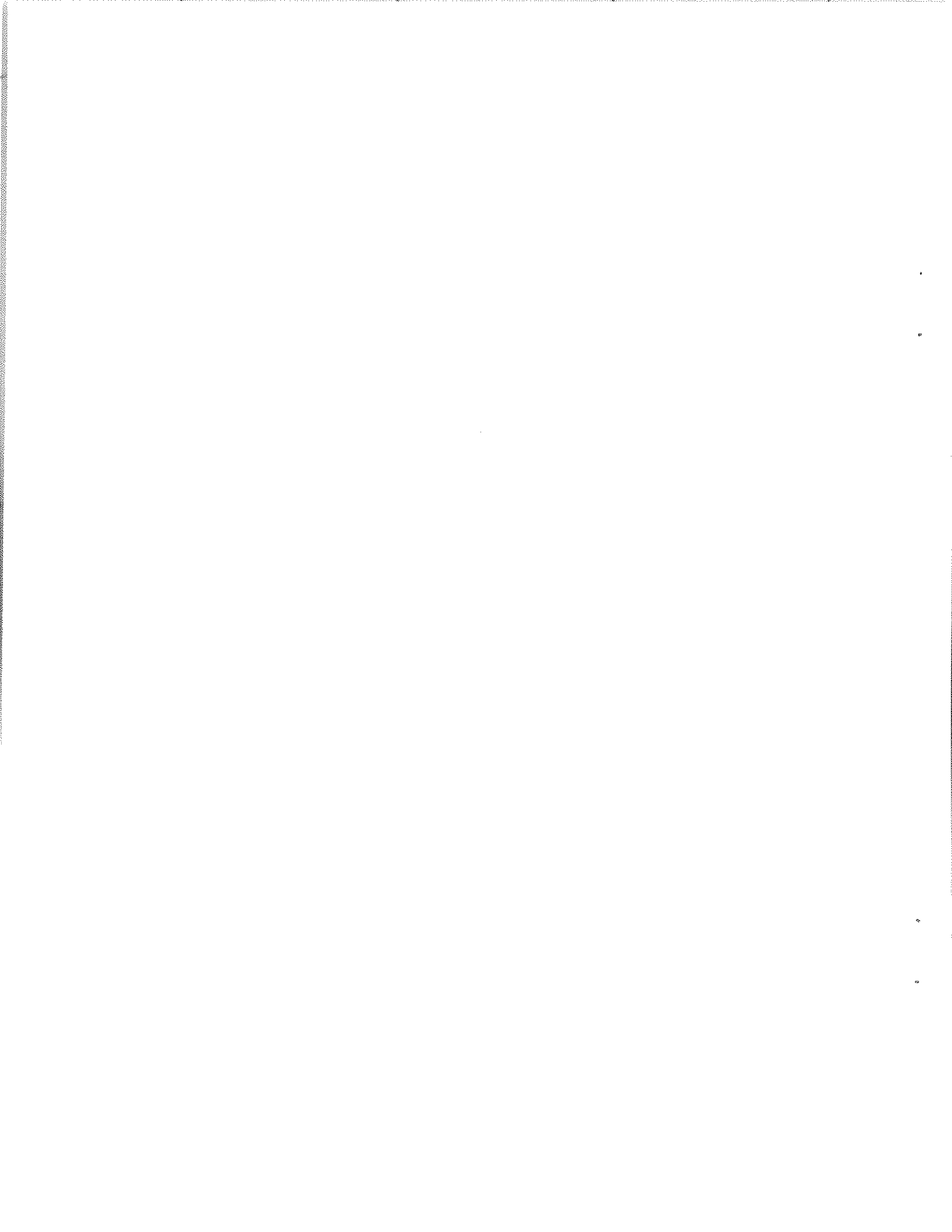
QC
995
.468
no. 175
c.2

UNITED STATES
DEPARTMENT OF COMMERCE
Malcolm Baldrige, Secretary

National Oceanic and
Atmospheric Administration
John V. Byrne, Administrator

National Weather
Service
Richard E. Hallgren, Director





This publication has been reviewed
and is approved for publication by
Scientific Services Division,
Western Region.

A handwritten signature in black ink, reading "L. W. Snellman". The signature is written in a cursive style with a large, prominent initial "L".

L. W. Snellman, Chief
Scientific Services Division
Western Region Headquarters
Salt Lake City, Utah

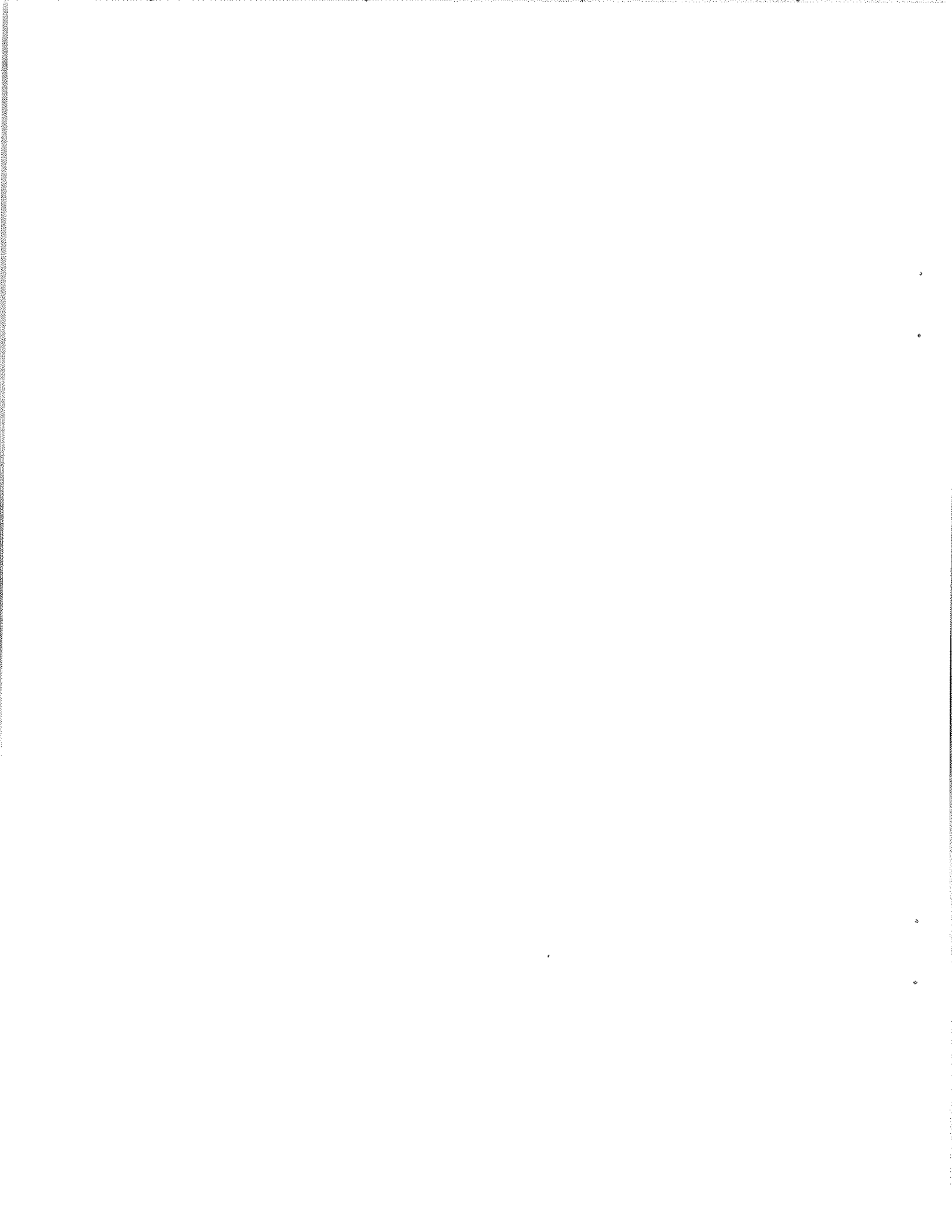


TABLE OF CONTENTS

	<u>Page</u>
List of Tables.....	iv
I. Introduction.....	
II. Objective Forecast Techniques.....	
III. Verification.....	
IV. Data Summaries.....	
V. References.....	2

LIST OF TABLES

	<u>Page</u>
Table 1. Verification of 1981 Tropical Storm and Hurricane Forecasts	3
Table 2. Summary of Eastern North Pacific Tropical Cyclones, 1981	3
Tables 3 through 17.....	4-18

ANNUAL DATA AND VERIFICATION TABULATION EASTERN NORTH PACIFIC TROPICAL STORMS AND HURRICANES 1981

Emil B. Gunther and Staff
Eastern Pacific Hurricane Center
San Francisco, California

I. INTRODUCTION

This is the third report of an annual series covering eastern north Pacific tropical cyclone activity. Data was provided by the National Weather Service, the National Earth Satellite Service Field Station - San Francisco, California, and the Chief, Aerial Reconnaissance Coordination, all Hurricanes (CARACH), Miami, Florida.

II. OBJECTIVE FORECAST TECHNIQUES

Tropical cyclone prediction models used by Eastern Pacific Hurricane Center (EPHC) forecasters include:

1. EPHC77 (Leftwich and Neumann, 1977). A statistical-synoptic model.
2. EPHC81 (Leftwich, 1981). A statistical-dynamical model.
3. EPCLIPER (Neumann, 1972). A simulated analog model based on persistence and climatology.
4. EPANALOG (Jarrell, Mauck, and Renard, 1975). An analog model.
5. SANBAR (Sanders and Burpee, 1968). A filtered barotropic model. (SANBAR, undergoing modification, was not available during 1981).
6. NMC MFM (Hovermale, 1975). A ten-level baroclinic model. (Used for cyclones threatening U.S. territory. Not used during 1981 season.)

In addition to the above models, forecasters also make use of NMC analyses and prognoses.

III. VERIFICATION

Verification statistics for the 1981 season are shown in Table 1. The forecast displacement error is the vector difference between the forecaster displacement and the actual displacement computed from best-track positions. The initial position error is not subtracted from the forecast error and depressions are not verified.

IV. DATA SUMMARIES

A summary of the 1981 eastern North Pacific tropical cyclone statistics is given in Table 2. Best track, operational positions, and position errors are given in Table 3.

Although no reconnaissance flights were made into eastern North Pacific cyclones during the 1981 season, U.S. Air Force aircraft were placed on standby status during Hurricane Beatriz when it appeared the cyclone might threaten U.S. territory.

VI. REFERENCES

- Hovermale J. B., 1975: First Season Storm Movement Characteristics of the NMC Objective Hurricane Forecast Model. Minutes of the NOAA Hurricane Warning Conference, National Hurricane Center, Coral Gables, Florida.
- Jarrell, J. C., C. M. Mauck, and R. J. Renard, 1975: The Navy's Analog Scheme for Forecasting Tropical Cyclone Motion Over the Northeastern Pacific Ocean. Technical Paper No. 6-75, Environmental Prediction Research Facility, Naval Postgraduate School, Monterey, California, 27pp.
- Leftwich, P. W., and C. J. Neumann, 1977: Statistical Guidance on the Prediction of Eastern North Pacific Tropical Cyclone Motion. NOAA Technical Memorandum NWS WR-125, National Oceanic and Atmospheric Administration, U.S. Department of Commerce, National Weather Service Western Region, 15pp.
- Neumann, C. J., 1972: An Alternate to the HURRAN Tropical Cyclone Forecast System. NOAA Technical Memorandum NWS SR-62, National Oceanic and Atmospheric Administration, U.S. Department of Commerce, National Weather Service Southern Region, 24pp.
- _____, J. R. Hope, and B. I. Miller, 1972: A Statistical Method of Combining Synoptic and Empirical Cyclone Prediction Systems. NOAA Technical Memorandum NWS SR-63, National Oceanic and Atmospheric Administration, U.S. Department of Commerce, National Weather Service Southern Region, 32pp.
- Sanders, F., and R. W. Burpee, 1968: Experiments in Barotropic Hurricane Track Forecasting. Journal of Applied Meteorology, Vol. 7, No. 3, 313-323.
- Leftwich, P. W., 1981: A Statistical-Dynamical Model for Prediction of Tropical Cyclone Motion in the Eastern North Pacific Ocean. First draft of manuscript. NOAA National Weather Service, National Hurricane Center, Coral Gables, Florida.

TABLE I
 VERIFICATION OF 1981 TROPICAL STORM AND HURRICANE FORECASTS
 (FIGURES IN PARENTHESES ARE NUMBER OF CASES)

METHOD	FORECAST DISPLACEMENT ERRORS (N. MI.)		
	24HR	48HR	72HR
OFFICIAL	100(196)	178(131)	267(82)
EPANALOG	99(184)	185(135)	261(87)
EPHC77	101(178)	195(133)	270(85)
EPHC81	104(78)	186(59)	242(36)
EPCLIPER	104(186)	194(137)	266(88)

TABLE 2
 SUMMARY OF EASTERN NORTH PACIFIC TROPICAL CYCLONES, 1981

NO.	NAME	CLASS	DATES	MAX (kt)	DAMAGE (\$ MILLION)	DEATHS
1.	ADRIAN	TS	30 MAY-4 JUN	40		
2.	BEATRIZ	HU	28 JUN-4 JUL	75		
3.	CALVIN	TS	4-9 JUL	45		
4.	DORA	HU	10-16 JUL	80		
5.	EUGENE	TS	16-21 JUL	45		
6.	SIX	TD	4-5 AUG	30		
7.	FERNANDA	HU	6-13 AUG	90		
8.	GREG	HU	13-22 AUG	65		
9.	NINE	TD	19-20 AUG	39		
10.	HILARY	HU	21-28 AUG	75		
11.	IRWIN	TS	27-31 AUG	45		
12.	JOVA	HU	14-21 SEP	75		
13.	KNUT	TS	19-21 SEP	75		
14.	LIDIA	TS	6-8 OCT	45	60*	73*
15.	MAX	TS	7-10 OCT	45		
16.	NORMA	HU	8-12 OCT	110	24*	6*
17.	OTIS	HU	24-30 OCT	75		

*All damage and deaths occurred in Mexico.

TROPSTV
STORM NUMBER=1

ADRIAN

DATE/TIME (GMT)	BEST TRACK		OPERATIONAL POSITION		POSITION ERROR (N.MI.)		24 HOUR FORECAST ERROR (N.MI)		48 HOUR FORECAST ERROR (N.MI.)		72 HOUR FORECAST ERROR (N.MI.)	
	LAT.	LONG.	LAT.	LONG.	LAT.	LONG.	LAT.	LONG.	LAT.	LONG.	LAT.	LONG.
53000	0.0	0.0	0.0	0.0	0.0	0.0	0.0	0.0	0.0	0.0	0.0	0.0
53006	0.0	0.0	0.0	0.0	0.0	0.0	0.0	0.0	0.0	0.0	0.0	0.0
53012	0.0	0.0	0.0	0.0	0.0	0.0	0.0	0.0	0.0	0.0	0.0	0.0
53018	11.4	105.2	11.2	105.5	21.3	0.0	12.8	103.2	0.0	0.0	0.0	0.0
53100	12.1	105.4	12.1	105.4	0.0	0.0	14.1	104.9	25.	0.0	0.0	0.0
53106	12.4	105.0	12.3	105.0	6.0	0.0	14.6	104.7	94.	0.0	0.0	0.0
53112	12.6	104.6	12.0	104.2	42.9	0.0	13.5	103.2	120.	0.0	0.0	0.0
53118	12.8	104.1	12.5	103.5	39.1	0.0	14.7	102.2	24.	0.0	0.0	0.0
6 100	12.9	103.5	12.8	104.0	29.5	0.0	14.3	102.2	102.	16.4	102.5	188.
6 106	13.0	102.8	12.8	103.8	59.1	0.0	15.3	103.6	193.	17.1	103.5	267.
6 112	13.1	102.1	13.1	103.2	63.7	0.0	14.3	103.6	163.	15.9	103.7	266.
6 118	13.2	101.5	13.1	101.6	8.3	0.0	14.4	103.1	136.	15.5	103.9	310.
6 200	13.3	101.2	13.3	101.0	11.6	0.0	14.2	100.1	42.	15.1	99.8	82.
6 206	13.5	100.8	13.3	101.0	16.7	0.0	15.0	99.2	67.	0.0	0.0	0.0
6 212	13.7	100.4	13.4	101.0	39.2	0.0	14.7	99.4	8.	16.3	99.0	0.
6 218	13.9	100.1	13.8	100.7	35.4	0.0	14.7	99.4	47.	0.0	0.0	0.0
6 300	14.2	99.7	14.2	100.0	0.0	0.0	14.2	99.4	72.	0.0	0.0	0.0
6 306	14.5	99.3	14.6	99.3	0.0	0.0	15.0	99.0	0.	0.0	0.0	0.0
6 312	14.7	98.8	14.8	98.6	0.0	0.0	15.9	97.2	0.	0.0	0.0	0.0
6 318	15.0	98.4	14.9	98.4	0.0	0.0	0.0	0.0	0.	0.0	0.0	0.0
MEAN VECTOR ERRORS (N.MI)												84.
NUMBER OF CASES												13
STOP												223.
R												5

TABLE 3

DIR JF
R
TROPSTV
FILE DOES NOT EXIST: TROPSTV.SV
R
DIR JF
R
TROPSTV
STORM NUMBER=2

BEATRIZ

DATE/TIME (GMT)	BEST TRACK		OPERATIONAL POSITION		POSITION ERROR (N.MI.)	24 HOUR FORECAST		ERROR (N.MI.)	48 HOUR FORECAST		ERROR (N.MI.)	72 HOUR FORECAST		ERROR (N.MI.)
	LAT.	LONG.	LAT.	LONG.		LAT.	LONG.		LAT.	LONG.		LAT.	LONG.	
62800	0.0	0.0	0.0	0.0	0.0	0.0	0.0	0.0	0.0	0.0	0.0	0.0	0.0	0.0
62806	0.0	0.0	0.0	0.0	0.0	0.0	0.0	0.0	0.0	0.0	0.0	0.0	0.0	0.0
62812	0.0	0.0	0.0	0.0	0.0	0.0	0.0	0.0	0.0	0.0	0.0	0.0	0.0	0.0
62818	11.4	103.4	11.4	103.4	0.0	11.8	105.6	117.0	0.0	0.0	0.0	0.0	0.0	0.0
62900	11.6	104.4	11.8	103.7	42.0	13.6	104.8	212.0	15.1	107.2	238.0	15.8	110.0	258.0
62906	11.7	105.4	12.0	105.0	29.2	13.1	108.1	58.0	14.5	111.4	72.0	15.8	114.7	126.0
62912	12.0	106.5	11.8	106.0	31.3	11.9	110.2	121.0	12.3	114.3	246.0	12.3	114.3	376.0
62918	12.4	107.5	12.4	107.5	0.0	13.2	112.0	159.0	14.1	116.3	217.0	14.4	120.7	392.0
63000	13.1	108.4	12.7	108.3	24.7	13.0	112.2	142.0	13.7	116.3	248.0	15.0	120.3	358.0
63006	13.8	109.1	13.1	109.1	42.0	14.4	112.9	81.0	15.7	116.5	164.0	17.0	120.0	254.0
63012	14.5	109.8	13.9	110.0	37.7	15.6	113.6	50.0	16.7	115.4	108.0	17.7	119.0	208.0
63018	15.2	110.4	15.0	110.0	25.4	18.0	111.9	130.0	19.5	115.0	74.0	20.5	118.0	108.0
7 100	15.3	111.3	15.2	111.3	6.0	17.2	114.2	6.0	18.0	117.5	125.0	18.3	120.7	260.0
7 106	15.5	112.2	15.5	112.1	5.6	16.8	115.8	87.0	18.0	119.0	172.0	19.0	122.7	294.0
7 112	16.1	112.9	16.2	113.0	8.2	17.7	116.4	79.0	18.8	119.2	147.0	19.0	132.0	300.0
7 118	16.6	113.6	16.8	113.8	16.3	18.0	115.0	112.0	19.2	116.5	222.0	20.0	132.0	372.0
7 200	17.3	114.2	17.3	114.2	0.0	19.0	116.9	60.0	20.6	119.8	131.0	21.2	133.0	0.0
7 206	17.9	114.8	17.9	114.8	0.0	20.1	116.7	51.0	21.4	119.0	154.0	22.4	131.3	0.0
7 212	18.6	115.4	18.5	115.3	8.2	20.2	117.7	64.0	21.6	120.0	172.0	22.0	132.0	0.0
7 218	19.2	116.2	19.4	116.2	13.2	21.7	119.3	13.0	23.5	123.0	145.0	25.5	126.3	0.0
7 300	19.8	116.9	20.0	116.9	12.0	22.6	122.0	105.0	24.7	122.0	0.0	26.0	125.0	0.0
7 306	20.4	117.6	20.5	117.5	8.2	22.6	119.8	70.0	24.8	122.1	0.0	26.7	125.0	0.0
7 312	21.2	118.4	21.1	118.3	8.1	23.4	121.2	45.0	26.0	124.0	0.0	28.0	127.0	0.0
7 318	21.9	119.2	21.9	119.2	0.0	25.6	122.7	65.0	29.0	124.0	0.0	0.0	0.0	0.0
7 400	22.6	120.0	22.6	120.1	0.0	25.1	123.0	0.0	27.3	125.3	0.0	0.0	0.0	0.0
7 406	23.5	120.7	23.5	120.6	0.0	25.8	122.8	0.0	27.5	125.0	0.0	0.0	0.0	0.0
7 412	24.5	121.2	24.0	121.7	0.0	0.0	0.0	0.0	0.0	0.0	0.0	0.0	0.0	0.0
7 418	25.5	121.5	25.5	121.5	0.0	0.0	0.0	0.0	0.0	0.0	0.0	0.0	0.0	0.0
MEAN VECTOR ERRORS (N.MI)														164.0
NUMBER OF CASES														16
STOP														276.0
R														12

TABLE 4

TROPSTV
STORM NUMBER=3

CALVIN

DATE/TIME (GMT)	BEST TRACK		OPERATIONAL POSITION		POSITION ERROR		24 HOUR FORECAST		48 HOUR FORECAST		72 HOUR FORECAST	
	LAT.	LONG.	LAT.	LONG.	(N.MI.)	ERROR	LAT.	LONG.	(N.MI.)	ERROR	LAT.	LONG.
7 400	0.0	0.0	0.0	0.0	0.0	0.0	0.0	0.0	0.0	0.0	0.0	0.0
7 406	0.0	0.0	0.0	0.0	0.0	0.0	0.0	0.0	0.0	0.0	0.0	0.0
7 412	0.0	0.0	0.0	0.0	0.0	0.0	0.0	0.0	0.0	0.0	0.0	0.0
7 418	13.4	102.4	12.8	102.5	36.4	35.	14.7	106.0	16.5	110.0	19.0	114.0
7 500	13.5	103.2	13.5	103.2	0.0	0.0	14.7	106.4	16.0	110.2	16.9	114.6
7 506	13.6	104.1	13.6	104.1	0.0	0.0	15.2	107.3	16.7	110.9	17.9	114.6
7 512	13.9	104.8	13.9	105.0	11.3	146.	15.3	108.7	17.0	112.4	19.0	116.0
7 518	14.3	105.7	14.2	105.7	6.0	175.	15.8	109.0	17.2	112.5	19.0	116.0
7 600	15.0	106.0	15.0	106.5	28.1	154.	16.7	109.7	18.1	112.9	19.5	116.2
7 606	15.9	106.3	15.7	106.0	20.7	59.	18.2	107.2	19.6	109.6	20.0	111.0
7 612	16.8	106.5	16.3	106.4	30.5	58.	18.5	107.3	20.0	108.7	21.0	111.0
7 618	17.6	106.9	17.7	106.7	12.6	60.	21.0	108.2	22.5	110.3	23.0	112.0
7 700	18.3	107.2	18.7	108.0	50.5	184.	21.2	111.8	23.0	115.0	24.7	118.5
7 706	18.9	107.5	18.7	108.1	35.8	138.	20.3	110.6	21.0	114.0	0.0	0.0
7 712	19.4	107.7	19.2	108.0	20.6	11.	21.2	108.7	22.6	109.8	0.0	0.0
7 718	19.8	108.0	20.0	108.1	13.2	34.	22.2	109.0	23.6	110.6	0.0	0.0
7 800	20.3	108.4	20.5	108.6	16.3	77.	22.9	109.7	25.3	110.6	0.0	0.0
7 806	20.8	108.7	21.1	108.3	0.0	0.	23.2	108.9	25.0	110.0	0.0	0.0
7 812	21.3	109.1	21.2	108.9	0.0	0.	22.5	109.9	24.0	112.0	0.0	0.0
7 818	21.6	109.5	21.7	109.3	0.0	0.	23.4	111.0	0.0	0.0	0.0	0.0
7 900	21.6	110.3	21.7	110.2	0.0	0.	0.0	0.0	0.0	0.0	0.0	0.0
7 906	0.0	0.0	0.0	0.0	0.0	0.	0.0	0.0	0.0	0.0	0.0	0.0
7 912	0.0	0.0	0.0	0.0	0.0	0.	0.0	0.0	0.0	0.0	0.0	0.0
7 918	0.0	0.0	0.0	0.0	0.0	0.	0.0	0.0	0.0	0.0	0.0	0.0

MEAN VECTOR ERRORS (N.MI)
NUMBER OF CASES
STOP
R

88.
14

202.
10

390.
6

TABLE 5

TROPSTV
 FILE DOES NOT EXIST: TROPSTV.SV
 R
 DIR JF
 R
 TROPSTV
 STORM NUMBER=4

H. DORA 24

DATE/TIME (GMT)	BEST TRACK		OPERATIONAL POSITION		POSITION ERROR (N.MI.)		24 HOUR FORECAST ERROR (N.MI.)		48 HOUR FORECAST ERROR (N.MI.)		72 HOUR FORECAST ERROR (N.MI.)	
	LAT.	LONG.	LAT.	LONG.	LAT.	LONG.	LAT.	LONG.	LAT.	LONG.	LAT.	LONG.
71000	0.0	0.0	0.0	0.0	0.0	0.0	0.0	0.0	0.0	0.0	0.0	0.0
71006	0.0	0.0	0.0	0.0	0.0	0.0	0.0	0.0	0.0	0.0	0.0	0.0
71012	0.0	0.0	0.0	0.0	0.0	0.0	0.0	0.0	0.0	0.0	0.0	0.0
71018	13.3	106.9	13.1	106.9	12.0	106.9	100.	110.8	16.2	114.1	136.	117.3
71100	13.5	107.5	13.0	107.5	30.0	107.5	96.	109.8	17.9	113.0	168.	116.4
71106	13.7	108.0	13.0	108.2	43.5	108.2	51.	111.3	14.8	115.0	67.	119.0
71112	13.9	108.5	13.3	108.7	37.8	108.7	13.	111.6	16.2	114.8	21.	117.3
71118	14.0	109.0	13.7	109.3	24.8	109.3	13.	112.0	16.9	115.0	70.	117.8
71200	14.2	109.8	14.0	109.8	12.0	109.8	44.	112.4	16.7	115.4	109.	118.7
71206	14.4	110.6	14.2	110.6	12.0	110.6	17.	113.8	16.5	117.2	73.	121.0
71212	14.7	111.4	14.5	111.4	12.0	111.4	38.	114.7	16.7	118.1	105.	121.6
71218	15.0	112.1	15.0	112.1	0.0	112.1	41.	115.4	17.7	118.8	143.	122.0
71300	15.1	113.1	15.1	113.1	0.0	113.1	47.	116.6	17.2	120.0	152.	123.3
71306	15.6	114.1	15.5	114.1	6.0	114.1	23.	118.0	18.0	122.0	86.	126.0
71312	16.0	115.0	16.0	115.1	5.6	115.1	68.	118.9	18.7	122.5	126.	126.0
71318	16.4	116.2	16.4	116.1	5.7	116.1	73.	120.1	18.9	123.7	119.	127.3
71400	16.8	117.2	16.7	117.3	8.3	117.3	75.	121.3	19.0	125.0	120.	128.3
71406	16.9	118.4	16.9	118.4	0.0	118.4	63.	122.4	18.9	126.2	144.	129.5
71412	17.2	119.8	17.0	119.9	13.3	119.9	57.	125.0	17.5	129.2	132.	133.3
71418	17.4	120.9	17.5	121.3	23.4	121.3	42.	126.4	19.4	130.8	62.	133.6
71500	17.7	122.6	17.7	122.6	0.0	122.6	32.	127.3	20.0	131.7	0.	134.7
71506	17.9	123.7	17.9	123.5	11.3	123.5	87.	127.4	19.7	130.8	0.	135.9
71512	18.4	124.8	18.4	124.7	5.6	124.7	18.	129.6	20.4	134.3	0.	137.0
71518	18.8	125.8	18.9	125.8	6.0	125.8	87.	130.2	21.1	133.4	0.	136.5
71600	18.9	126.9	19.3	127.1	0.0	127.1	0.	131.2	21.7	135.2	0.	137.0
71606	19.1	127.9	19.7	128.6	0.0	128.6	0.	133.1	22.0	137.0	0.	137.0
71612	19.3	128.8	19.7	129.3	0.0	129.3	0.	133.4	20.5	135.0	0.	137.0
71618	19.4	129.8	19.0	129.8	0.0	129.8	0.	133.4	0.0	135.0	0.	137.0

MEAN VECTOR ERRORS (N.MI)
 NUMBER OF CASES
 STOP
 R

52.
 21

106.
 17

170.
 13

TROPSTU
STORM NUMBER=5

EUGENE

DATE/TIME (GMT)	BEST TRACK		OPERATIONAL POSITION		POSITION ERROR (N.MI.)		24 HOUR FORECAST LAT. LONG.		48 HOUR FORECAST LAT. LONG.		72 HOUR FORECAST LAT. LONG.		ERROR (N.MI.)
	LAT.	LONG.	LAT.	LONG.	LAT.	LONG.	LAT.	LONG.	LAT.	LONG.	LAT.	LONG.	
71600	0.0	0.0	0.0	0.0	0.0	0.0	0.0	0.0	0.0	0.0	0.0	0.0	0.
71606	0.0	0.0	0.0	0.0	0.0	0.0	0.0	0.0	0.0	0.0	0.0	0.0	0.
71612	0.0	0.0	0.0	0.0	0.0	0.0	0.0	0.0	0.0	0.0	0.0	0.0	0.
71618	17.5	106.6	17.4	106.5	8.3	0.0	18.1	110.6	18.3	112.9	18.5	114.8	40.
71700	17.7	107.4	17.5	107.5	13.3	0.0	18.1	110.8	19.0	114.0	20.0	117.0	42.
71706	17.9	108.1	17.8	107.9	12.8	0.0	18.3	110.6	19.0	113.3	19.8	116.2	98.
71712	18.1	108.8	18.1	108.8	0.0	0.0	19.0	111.6	20.0	114.1	21.1	116.8	165.
71718	18.1	109.6	18.1	109.6	11.2	0.0	19.0	113.2	20.0	116.6	20.9	119.5	79.
71800	17.8	110.3	17.9	110.3	6.0	0.0	18.2	113.8	18.9	117.0	19.5	120.5	100.
71806	17.6	110.8	17.4	110.9	13.3	0.0	16.8	113.1	16.7	115.7	17.4	118.8	309.
71812	17.5	111.3	17.3	111.2	13.3	0.0	17.1	113.7	17.4	115.7	18.6	118.2	378.
71818	17.5	111.8	17.4	111.2	34.3	0.0	17.8	112.9	18.3	114.6	19.0	117.1	484.
71900	18.1	112.7	17.8	112.2	33.5	0.0	18.0	114.3	18.5	116.5	19.0	119.5	0.
71906	18.7	113.8	18.0	113.2	53.9	0.0	19.0	117.0	20.1	120.8	20.7	124.5	0.
71912	19.1	114.8	18.2	114.4	58.5	0.0	19.1	118.2	19.9	121.9	20.6	125.3	0.
71918	19.6	115.7	19.1	115.1	44.9	0.0	20.9	118.9	22.6	122.4	23.8	125.6	0.
72000	19.7	116.8	19.6	116.4	23.2	0.0	21.7	120.6	23.0	124.0	24.0	127.5	0.
72006	19.9	118.2	19.5	117.9	29.3	0.0	20.3	123.2	0.0	0.0	0.0	0.0	0.
72012	20.2	119.7	20.0	119.5	16.4	0.0	21.0	124.7	0.0	0.0	0.0	0.0	0.
72018	20.6	121.0	20.2	120.7	29.3	0.0	21.2	125.5	0.0	0.0	0.0	0.0	0.
72100	20.7	122.5	20.4	122.0	0.0	0.0	0.0	0.0	0.0	0.0	0.0	0.0	0.
72106	21.0	123.8	20.8	122.9	0.0	0.0	0.0	0.0	0.0	0.0	0.0	0.0	0.
72112	21.3	125.2	21.2	124.3	0.0	0.0	0.0	0.0	0.0	0.0	0.0	0.0	0.
72118	21.4	126.0	21.7	125.2	0.0	0.0	0.0	0.0	0.0	0.0	0.0	0.0	0.

MEAN VECTOR ERRORS (N.MI)
NUMBER OF CASES
STOP
R

82.
17

168.
13

188.
9

TABLE 7

TROPSTV
STORM NUMBER=6

H. FERNANDA

DATE/TIME (GMT)	BEST TRACK		OPERATIONAL POSITION		POSITION ERROR (N.M.I.)		24 HOUR FORECAST ERROR (N.M.I.)		48 HOUR FORECAST ERROR (N.M.I.)		72 HOUR FORECAST ERROR (N.M.I.)	
	LAT.	LONG.	LAT.	LONG.	LAT.	LONG.	LAT.	LONG.	LAT.	LONG.	LAT.	LONG.
8 600	0.0	0.0	0.0	0.0	0.0	0.0	0.0	0.0	0.0	0.0	0.0	0.0
8 606	0.0	0.0	0.0	0.0	0.0	0.0	0.0	0.0	0.0	0.0	0.0	0.0
8 612	12.0	104.6	12.0	104.6	0.0	0.0	13.0	108.3	14.5	112.1	15.4	115.9
8 618	12.1	106.2	12.1	106.2	0.0	0.0	13.0	111.0	14.3	115.6	14.9	119.9
8 700	12.1	107.9	12.5	108.5	42.2	0.0	13.5	113.8	14.4	117.5	15.2	121.1
8 706	12.2	109.6	12.2	110.5	51.9	0.0	12.9	117.2	13.9	121.8	15.2	125.8
8 712	12.3	111.2	12.3	112.3	63.5	0.0	12.8	119.1	14.8	124.4	14.7	129.0
8 718	12.6	112.9	12.5	113.7	46.4	0.0	13.5	119.5	62.	123.6	80.	127.6
8 800	12.8	114.6	12.5	114.6	18.0	0.0	13.4	120.2	97.	125.3	104.	129.7
8 806	13.3	116.2	12.9	116.0	26.6	0.0	13.6	120.2	124.	124.0	15.3	128.1
8 812	13.9	117.7	13.2	116.6	75.3	0.0	14.5	122.1	78.	125.9	206.	130.1
8 818	14.5	119.2	14.5	119.2	0.0	0.0	16.3	123.8	71.	127.4	178.	131.0
8 900	14.8	120.6	14.9	120.8	12.8	0.0	16.4	125.5	46.	129.6	150.	134.0
8 906	14.9	122.0	14.7	122.0	12.0	0.0	15.6	126.7	83.	131.0	17.0	134.7
8 912	15.1	123.4	15.1	123.3	5.6	0.0	15.5	128.3	99.	132.1	334.	137.5
8 918	15.5	124.8	15.5	124.7	5.6	0.0	17.0	129.8	63.	133.8	19.0	137.5
81000	15.8	126.2	15.8	126.0	11.1	0.0	17.0	131.2	115.	135.5	247.	139.5
81006	16.5	127.7	16.6	127.7	6.0	0.0	18.0	132.7	128.	136.7	268.	140.4
81012	17.1	129.1	17.0	129.0	8.2	0.0	18.7	134.2	141.	138.2	240.	141.7
81018	17.8	130.6	17.8	130.5	5.6	0.0	19.5	135.6	144.	139.6	186.	143.2
81100	18.8	131.9	18.8	131.9	0.0	0.0	21.1	136.3	69.	140.0	122.	143.0
81106	19.8	133.2	20.0	133.5	20.4	0.0	24.2	138.0	42.	140.9	0.	143.6
81112	20.8	134.4	21.0	134.7	20.4	0.0	24.1	138.8	37.	141.2	0.	143.4
81118	21.8	135.7	21.9	135.7	6.0	0.0	25.1	139.0	107.	140.5	0.	141.0
81200	22.7	137.0	22.1	136.9	36.4	0.0	23.0	141.0	164.	144.0	0.	141.0
81206	23.3	137.5	23.5	138.0	0.0	0.0	26.6	142.2	0.	147.0	0.	141.0
81212	23.7	137.9	23.6	138.4	0.0	0.0	25.0	139.2	0.	147.0	0.	141.0
81218	24.1	138.2	23.4	138.4	0.0	0.0	0.0	0.0	0.	0.0	0.	141.0
81300	24.3	138.7	24.5	138.5	0.0	0.0	0.0	0.0	0.	0.0	0.	141.0
81306	0.0	0.0	0.0	0.0	0.0	0.0	0.0	0.0	0.	0.0	0.	141.0
81312	0.0	0.0	0.0	0.0	0.0	0.0	0.0	0.0	0.	0.0	0.	141.0
81318	0.0	0.0	0.0	0.0	0.0	0.0	0.0	0.0	0.	0.0	0.	141.0

MEAN VECTOR ERRORS (N.M.I.)
NUMBER OF CASES STOP

103.
23

196.
19

309.
15

TROPSTV
STORM NUMBER=7

T.S.GREG 24

DATE/TIME (GMT)	BEST TRACK		OPERATIONAL POSITION		POSITION ERROR		24 HOUR FORECAST ERROR		48 HOUR FORECAST ERROR		72 HOUR FORECAST ERROR		
	LAT.	LONG.	LAT.	LONG.	(N.MI.)	(N.MI.)	LAT.	LONG.	(N.MI.)	(N.MI.)	LAT.	LONG.	(N.MI.)
81300	0.0	0.0	0.0	0.0	0.0	0.0	0.0	0.0	0.0	0.0	0.0	0.0	0.0
81306	16.2	111.4	16.0	111.5	13.3	115.1	16.8	115.1	17.6	118.9	18.2	122.7	170.
81312	16.4	111.7	16.6	112.0	20.6	115.1	18.3	115.1	20.0	118.1	21.7	120.9	93.
81318	16.5	112.1	16.5	112.6	28.1	115.0	17.7	115.0	19.4	117.5	21.1	119.9	170.
81400	16.6	112.6	16.8	112.5	13.3	115.2	17.8	115.2	19.0	118.1	20.3	121.1	163.
81406	16.8	113.2	16.6	113.2	12.0	115.7	17.2	115.7	18.0	117.8	18.8	120.0	302.
81412	17.3	113.7	17.2	113.7	6.0	116.3	18.3	116.3	19.7	119.1	20.8	121.9	262.
81418	17.7	114.2	17.7	114.2	0.0	116.4	19.8	116.4	21.6	118.5	23.1	120.2	466.
81500	18.0	115.3	18.0	115.1	11.2	117.8	19.9	117.8	21.5	120.5	22.6	123.1	397.
81506	18.4	116.2	18.2	116.2	12.0	118.0	19.2	120.2	21.5	120.5	20.9	123.1	466.
81512	18.8	117.0	18.7	116.6	23.3	118.0	19.2	119.6	21.2	122.5	23.4	125.2	405.
81518	19.3	118.0	19.2	118.0	6.0	121.3	20.8	121.3	22.6	124.7	24.2	127.5	431.
81600	19.8	119.5	19.8	119.1	22.4	124.4	21.5	122.5	22.9	126.0	23.6	129.0	436.
81606	20.0	120.8	19.9	120.3	28.7	124.4	21.3	124.4	22.3	127.9	26.2	130.6	404.
81612	20.2	122.0	20.3	121.6	23.3	125.9	21.4	125.9	22.5	129.5	25.5	132.4	375.
81618	20.2	123.0	20.3	122.8	12.7	127.3	21.4	127.3	0.0	0.0	0.0	0.0	0.
81700	20.3	124.3	20.3	124.0	16.9	128.0	21.2	128.0	22.7	130.8	33.1	0.0	0.
81706	20.3	125.3	20.3	125.1	11.3	129.0	20.7	129.0	21.5	132.7	25.1	0.0	0.
81712	20.1	126.5	20.1	126.5	0.0	131.3	20.3	131.3	21.2	135.4	20.0	138.4	230.
81718	19.6	127.7	19.7	127.7	6.0	132.8	19.2	132.8	19.0	137.2	66.	141.5	108.
81800	19.1	129.1	19.1	129.1	0.0	134.0	18.3	134.0	18.2	138.3	21.	141.0	0.
81806	18.8	130.3	18.5	130.2	18.9	134.2	17.7	134.2	18.3	137.5	75.	140.0	0.
81812	18.7	131.5	18.6	131.3	12.9	136.1	18.4	136.1	18.4	140.0	58.	144.0	0.
81818	18.5	132.7	18.6	132.7	6.0	137.3	18.8	137.3	19.3	141.7	126.	145.0	0.
81900	18.3	133.7	18.2	134.2	29.2	139.8	17.8	139.8	17.5	144.7	0.	149.6	0.
81906	18.1	135.0	18.1	135.3	17.1	140.2	17.8	140.2	18.4	143.7	0.	147.1	0.
81912	18.0	136.2	18.0	136.4	11.4	141.1	17.9	141.1	17.9	145.6	0.	150.0	0.
81918	17.9	137.4	17.9	137.3	5.7	141.7	17.6	141.7	17.7	145.7	0.	149.8	0.
82000	18.0	138.0	18.0	138.0	0.0	141.7	18.4	141.7	19.2	145.1	0.	148.5	0.
82006	18.0	138.7	17.8	138.7	0.0	142.3	18.3	142.3	19.0	145.3	0.	148.4	0.
82012	18.2	139.3	18.2	139.0	0.0	142.0	18.9	142.0	19.9	144.8	0.	147.5	0.
82018	18.5	139.8	18.4	139.7	0.0	142.2	19.3	142.2	20.1	145.0	0.	148.5	0.

MEAN VECTOR ERRORS (N.MI)
NUMBER OF CASES
STOP
R

165.
22

287.
16

TABLE 9

TROPSTV
STORM NUMBER=8

HILARY24

DATE/TIME (GMT)	BEST TRACK		OPERATIONAL POSITION		POSITION ERROR (N.MI.)		24 HOUR FORECAST ERROR (N.MI.)		48 HOUR FORECAST ERROR (N.MI.)		72 HOUR FORECAST ERROR (N.MI.)			
	LAT.	LONG.	LAT.	LONG.	LAT.	LONG.	LAT.	LONG.	LAT.	LONG.	LAT.	LONG.		
82200	18.2	108.0	18.2	108.4	22.5	113.6	19.5	113.6	213.	20.6	118.1	21.1	120.0	368.
82206	18.7	108.6	18.2	109.9	79.0	115.6	19.4	115.6	303.	20.2	120.0	20.5	123.8	523.
82212	19.3	109.1	19.0	111.0	107.3	115.0	20.4	115.0	261.	21.6	118.3	23.1	120.6	306.
82218	19.7	109.8	19.5	111.3	84.0	114.1	21.1	114.1	227.	22.9	116.2	23.7	116.2	162.
82300	19.8	110.0	18.5	110.0	78.0	112.6	19.1	112.6	133.	19.7	114.5	20.8	116.0	132.
82306	19.8	110.1	18.8	110.3	61.0	112.2	19.7	112.2	70.	20.7	114.3	21.5	116.4	202.
82312	19.8	110.2	19.4	110.5	29.2	112.2	20.4	112.2	61.	21.5	114.2	22.4	116.4	261.
82318	19.8	110.3	19.8	110.3	0.0	111.2	20.9	111.2	99.	21.8	113.0	22.7	115.5	387.
82400	19.7	110.5	19.7	110.3	11.1	111.7	20.4	111.7	101.	21.7	121.7	23.0	114.0	521.
82406	19.7	111.0	19.4	111.0	18.0	113.3	19.4	113.3	90.	19.6	116.6	23.2	119.8	310.
82412	19.7	111.6	19.5	111.7	13.2	114.7	20.0	114.7	74.	20.9	117.4	22.1	119.8	313.
82418	19.8	112.4	19.7	112.4	6.0	114.8	20.6	114.8	134.	22.0	117.0	23.3	118.4	446.
82500	20.0	113.5	20.3	113.5	18.0	116.8	21.1	116.8	85.	22.0	120.0	22.8	123.2	245.
82506	20.3	114.7	20.4	114.5	12.6	118.3	21.6	118.3	96.	22.8	121.6	24.0	124.1	294.
82512	20.7	115.8	20.8	115.7	8.2	120.0	22.0	120.0	62.	22.8	123.1	23.6	123.7	253.
82518	21.0	117.1	21.2	117.1	12.0	121.9	22.7	121.9	61.	23.4	125.1	24.7	127.7	0.
82600	21.4	118.7	21.3	118.3	23.0	122.4	22.5	122.4	65.	23.6	125.3	24.5	128.4	267.
82606	21.7	120.2	21.8	120.0	12.6	125.2	23.3	125.2	81.	25.0	130.0	25.0	130.0	0.
82612	21.8	121.5	22.2	121.1	32.6	126.0	23.7	126.0	102.	25.0	130.0	26.4	132.7	0.
82618	21.7	122.7	21.8	122.4	17.8	127.0	21.8	127.0	62.	25.0	130.0	26.4	132.7	0.
82700	21.6	123.3	21.8	123.3	12.0	127.4	21.9	127.4	83.	22.4	131.5	0.0	0.0	0.
82706	21.4	124.1	22.0	124.8	53.1	129.4	22.4	129.4	145.	22.8	133.8	0.0	0.0	0.
82712	21.2	125.1	22.1	125.4	56.5	129.6	22.6	129.6	119.	23.0	133.7	0.0	0.0	0.
82718	21.0	126.3	21.2	126.1	16.4	129.8	20.5	129.8	16.	0.0	0.0	0.0	0.0	0.
82800	20.7	127.3	20.6	126.9	0.0	130.5	20.0	130.5	0.	0.0	0.0	0.0	0.0	0.
82806	20.5	128.2	20.5	127.8	0.0	131.5	20.5	131.5	0.	0.0	0.0	0.0	0.0	0.
82812	20.4	129.1	20.7	129.0	0.0	132.7	21.2	132.7	0.	0.0	0.0	0.0	0.0	0.
82818	20.2	130.0	20.3	130.0	0.0	0.0	0.0	0.0	0.	0.0	0.0	0.0	0.0	0.

MEAN VECTOR ERRORS (N.MI)
NUMBER OF CASES
STOP
R

227.
20

114.
24

312.
16

TABLE 10

TROPSTV
STORM NUMBER=9

IRWIN24

DATE/TIME (GMT)	BEST TRACK		OPERATIONAL POSITION		24 HOUR FORECAST POSITION ERROR (N.MI.)		48 HOUR FORECAST LAT. LONG. (N.MI.)		72 HOUR FORECAST LAT. LONG. (N.MI.)		ERROR (N.MI.)	
	LAT.	LONG.	LAT.	LONG.	LAT.	LONG.	LAT.	LONG.	LAT.	LONG.		
82700	0.0	0.0	0.0	0.0	0.0	0.0	0.0	0.0	0.0	0.0	0.	
82706	0.0	0.0	0.0	0.0	0.0	0.0	0.0	0.0	0.0	0.0	0.	
82712	0.0	0.0	0.0	0.0	0.0	0.0	0.0	0.0	0.0	0.0	0.	
82718	16.5	103.5	16.0	103.0	41.5	16.8	104.0	0.0	0.0	0.0	0.	
82800	17.2	103.9	17.0	106.0	117.3	17.7	109.4	113.	0.0	0.0	0.	
82806	17.7	104.4	16.5	106.0	114.6	17.5	110.8	113.	18.8	112.6	325.	
82812	18.4	104.9	17.0	105.5	90.4	17.5	108.8	301.	18.6	114.8	455.	
82818	19.1	105.5	18.3	105.2	50.8	18.5	108.8	199.	20.2	111.8	228.	
82900	19.8	106.1	19.5	106.1	18.0	20.7	107.5	112.	22.6	110.0	94.	
82906	20.5	106.7	21.0	107.0	34.1	22.2	108.6	36.	24.1	111.6	33.	
82912	21.3	107.2	21.5	107.3	13.2	25.0	109.5	95.	28.6	111.8	283.	
82918	22.0	107.7	22.5	108.0	34.2	25.0	109.7	83.	27.3	110.5	0.	
83000	22.5	108.5	22.8	108.7	40.5	25.6	109.7	132.	0.0	0.0	0.	
83006	23.1	109.2	23.6	108.7	21.0	25.6	110.0	150.	0.0	0.0	0.	
83012	23.5	110.1	23.7	110.2	0.0	26.0	109.9	207.	0.0	0.0	0.	
83018	23.9	111.0	23.8	111.1	0.0	25.2	112.8	0.	0.0	0.0	0.	
83100	24.0	112.0	24.1	112.2	0.0	25.1	114.1	0.	0.0	0.0	0.	
83106	24.2	113.0	24.0	113.0	0.0	25.0	115.0	0.	0.0	0.0	0.	
83112	0.0	0.0	0.0	0.0	0.0	0.0	0.0	0.	0.0	0.0	0.	
83118	0.0	0.0	0.0	0.0	0.0	0.0	0.0	0.	0.0	0.0	0.	
MEAN VECTOR ERRORS (N.MI)												350.
NUMBER OF CASES												2
STOP												
R												

TABLE 11

TROPSTV
STORM NUMBER=0

JOVA 24

DATE/TIME (GMT)	BEST TRACK		OPERATIONAL POSITION		POSITION ERROR (N.MI.)		24 HOUR FORECAST LAT. LONG.		48 HOUR FORECAST LAT. LONG.		72 HOUR FORECAST LAT. LONG.	
	LAT.	LONG.	LAT.	LONG.	LAT.	LONG.	LAT.	LONG.	LAT.	LONG.	LAT.	LONG.
91400	0.0	0.0	0.0	0.0	0.0	0.0	0.0	0.0	0.0	0.0	0.0	0.0
91406	0.0	0.0	0.0	0.0	0.0	0.0	0.0	0.0	0.0	0.0	0.0	0.0
91412	14.5	123.4	14.7	122.8	36.6	0.0	17.0	129.0	0.0	0.0	0.0	0.0
91418	14.6	124.6	14.5	124.3	18.2	0.0	15.3	129.0	15.8	132.0	16.0	135.0
91500	14.7	125.8	14.7	125.6	11.4	0.0	15.6	130.7	16.6	134.8	17.1	137.7
91506	14.7	127.0	14.9	126.9	13.3	0.0	15.8	131.4	16.6	135.0	17.1	138.4
91512	14.8	128.2	15.0	128.0	16.5	0.0	15.9	132.1	16.8	135.8	18.3	139.7
91518	14.9	129.3	14.9	129.2	5.7	0.0	15.3	133.6	16.0	137.5	17.3	140.7
91600	15.2	130.2	15.1	130.2	6.0	0.0	15.4	134.4	15.8	138.6	16.1	142.6
91606	15.5	130.9	15.3	131.1	16.5	0.0	16.3	134.8	17.1	137.8	18.1	140.9
91612	15.9	131.7	15.7	131.5	16.5	0.0	16.9	134.6	17.9	137.3	19.0	140.0
91618	16.3	132.5	16.2	132.1	23.6	0.0	17.6	134.6	18.8	136.9	19.6	139.6
91700	16.7	133.3	16.7	133.3	0.0	0.0	18.4	136.1	20.1	138.6	22.2	141.3
91706	17.4	134.0	17.3	133.8	12.8	0.0	19.5	136.5	21.6	138.7	24.2	141.5
91712	18.0	135.0	18.0	135.0	0.0	0.0	20.7	138.4	23.0	140.5	25.5	141.9
91718	18.8	136.0	18.7	135.8	0.0	0.0	20.9	138.6	22.3	140.5	23.5	142.9
91800	19.4	137.3	19.4	137.3	0.0	0.0	21.3	140.3	22.7	143.0	24.3	146.0
91806	20.1	138.6	20.1	138.5	0.0	0.0	22.2	143.0	23.2	145.8	24.0	149.0
91812	19.7	140.0	20.7	139.0	0.0	0.0	23.0	142.8	24.4	144.8	26.0	146.0
91818	0.0	0.0	0.0	0.0	0.0	0.0	0.0	0.0	0.0	0.0	0.0	0.0

MEAN VECTOR ERRORS (N.MI)
NUMBER OF CASES STOP
R

74.
13

134.
8

159.
4

TABLE 12

TROPSTV
STORM NUMBER=1

KNUT 24

DATE/TIME (GMT)	BEST TRACK		OPERATIONAL POSITION		POSITION ERROR (N.MI.)		24 HOUR FORECAST LAT. LONG.		48 HOUR FORECAST LAT. LONG.		72 HOUR FORECAST LAT. LONG.		ERROR (N.MI.)	
	LAT.	LONG.	LAT.	LONG.	LAT.	LONG.	LAT.	LONG.	LAT.	LONG.	LAT.	LONG.		
91900	15.5	104.5	14.5	104.5	60.0		16.3	109.6	17.7	113.3	19.4	116.7	0.	
91906	15.8	106.0	15.3	105.6	37.4		18.5	109.8	20.6	112.0	22.5	113.5	0.	
91912	16.1	107.4	16.2	107.5	8.2		18.8	112.7	20.3	115.8	21.0	118.8	0.	
91918	16.7	108.8	16.6	108.9	8.2		18.8	114.5	20.8	117.8	23.0	120.0	0.	
92000	17.6	109.5	17.3	109.2	24.7		19.3	112.8	20.6	115.4	21.8	117.0	0.	
92006	18.6	109.9	18.2	109.4	56.7		21.9	109.2	24.4	107.8	0.0	0.0	0.	
92012	19.7	110.2	19.1	109.2	66.0		22.4	109.2	27.0	110.0	0.0	0.0	0.	
92018	20.8	110.6	20.8	110.6	0.0		24.7	110.2	0.0	0.0	0.0	0.0	0.	
92100	21.6	109.4	21.6	109.5	0.0		25.0	109.0	0.0	0.0	0.0	0.0	0.	
92106	22.5	108.1	22.8	108.1	0.0		0.0	0.0	0.0	0.0	0.0	0.0	0.	
92112	23.3	107.0	23.3	107.0	0.0		0.0	0.0	0.0	0.0	0.0	0.0	0.	
92118	0.0	0.0	0.0	0.0	0.0		0.0	0.0	0.0	0.0	0.0	0.0	0.	
MEAN VECTOR ERRORS (N.MI)							141.				365.		0.	
NUMBER OF CASES							7						3	0
STOP														
R														

TABLE 13

TROPSTV
STORM NUMBER=2

T.S. LIDIA 24

DATE/TIME (GMT)	BEST TRACK		OPERATIONAL POSITION		POSITION ERROR (N.MI.)		24 HOUR FORECAST LAT. LONG.		48 HOUR FORECAST LAT. LONG.		72 HOUR FORECAST LAT. LONG.		FORECAST ERROR (N.MI.)	
	LAT.	LONG.	LAT.	LONG.	LAT.	LONG.	LAT.	LONG.	LAT.	LONG.	LAT.	LONG.	LAT.	LONG.
10 600	0.0	0.0	0.0	0.0	0.0	0.0	0.0	0.0	0.0	0.0	0.0	0.0	0.0	0.0
10 606	0.0	0.0	0.0	0.0	0.0	0.0	0.0	0.0	0.0	0.0	0.0	0.0	0.0	0.0
10 612	0.0	0.0	0.0	0.0	0.0	0.0	0.0	0.0	0.0	0.0	0.0	0.0	0.0	0.0
10 618	19.5	110.0	19.0	110.0	30.0	0.0	20.7	112.2	22.9	114.2	25.8	115.8	0.0	0.0
10 700	20.4	109.5	20.4	109.5	0.0	0.0	23.9	109.7	0.0	0.0	0.0	0.0	0.0	0.0
10 706	21.5	109.5	21.2	109.1	28.2	0.0	25.2	107.1	0.0	0.0	0.0	0.0	0.0	0.0
10 712	22.6	109.5	21.8	109.2	0.0	0.0	25.0	108.2	0.0	0.0	0.0	0.0	0.0	0.0
10 718	23.7	109.5	23.2	109.6	0.0	0.0	0.0	0.0	0.0	0.0	0.0	0.0	0.0	0.0
10 800	25.0	109.5	24.6	109.6	0.0	0.0	0.0	0.0	0.0	0.0	0.0	0.0	0.0	0.0
10 806	26.0	109.0	25.8	108.9	0.0	0.0	0.0	0.0	0.0	0.0	0.0	0.0	0.0	0.0
10 812	0.0	0.0	0.0	0.0	0.0	0.0	0.0	0.0	0.0	0.0	0.0	0.0	0.0	0.0
10 818	0.0	0.0	0.0	0.0	0.0	0.0	0.0	0.0	0.0	0.0	0.0	0.0	0.0	0.0
MEAN VECTOR ERRORS (N.MI)					118.									0.
NUMBER OF CASES														0
STOP														
R														

TABLE 14

TROPSTV
STORM NUMBER=3

MAX 24

DATE/TIME (GMT)	BEST TRACK		OPERATIONAL POSITION		24 HOUR FORECAST POSITION (N.MI.)		48 HOUR FORECAST LAT. LONG.		72 HOUR FORECAST LAT. LONG.		ERROR (N.MI.)
	LAT.	LONG.	LAT.	LONG.	LAT.	LONG.	LAT.	LONG.	LAT.	LONG.	
10 700	0.0	0.0	0.0	0.0	0.0	0.0	0.0	0.0	0.0	0.0	0.
10 706	0.0	0.0	0.0	0.0	0.0	0.0	0.0	0.0	0.0	0.0	0.
10 712	0.0	0.0	0.0	0.0	0.0	0.0	0.0	0.0	0.0	0.0	0.
10 718	15.1	115.4	14.8	115.6	21.3	116.6	89.	17.1	117.7	66.	0.
10 800	15.2	115.9	15.1	116.2	18.1	117.7	168.	19.2	119.1	93.	36.
10 806	15.6	116.1	15.3	116.5	29.0	116.5	38.	18.9	115.3	153.	0.
10 812	16.1	116.3	15.7	116.9	41.7	117.4	43.	19.3	117.1	88.	0.
10 818	16.5	116.5	15.0	118.0	124.5	120.7	262.	15.6	123.3	350.	0.
10 900	18.3	117.9	15.0	119.0	207.9	14.8	122.5	14.9	126.0	0.	0.
10 906	18.5	118.0	17.7	116.3	107.5	20.0	116.0	22.5	115.0	0.	0.
10 912	18.7	118.2	18.0	117.8	47.7	20.3	117.9	22.2	118.3	0.	0.
10 918	18.9	118.3	18.2	117.6	57.8	19.2	117.7	20.0	118.1	0.	0.
101000	18.4	117.7	18.4	117.7	0.0	19.5	117.9	0.0	0.0	0.	0.
101006	18.8	118.0	18.8	118.0	0.0	20.1	118.8	0.0	0.0	0.	0.
101012	18.5	118.4	18.5	118.4	0.0	17.2	118.7	0.0	0.0	0.	0.
101018	18.8	118.2	18.8	118.2	0.0	0.0	0.0	0.0	0.0	0.	0.
MEAN VECTOR ERRORS (N.MI)					137.			150.			36.
NUMBER OF CASES					9			5			1
STOP											
R											

TABLE 15

TROPSTU
STORM NUMBER=4

NORMA 24

DATE/TIME (GMT)	BEST TRACK		OPERATIONAL POSITION		POSITION ERROR (N.MI.)		24 HOUR FORECAST		48 HOUR FORECAST		72 HOUR FORECAST		ERROR (N.MI.)	
	LAT.	LONG.	LAT.	LONG.	LAT.	LONG.	LAT.	LONG.	LAT.	LONG.	LAT.	LONG.		
10 800	0.0	0.0	0.0	0.0	0.0	0.0	0.0	0.0	0.0	0.0	0.0	0.0	0.	
10 806	0.0	0.0	0.0	0.0	0.0	0.0	0.0	0.0	0.0	0.0	0.0	0.0	0.	
10 812	0.0	0.0	0.0	0.0	0.0	0.0	0.0	0.0	0.0	0.0	0.0	0.0	0.	
10 818	14.5	104.5	14.5	104.4	5.6	0.0	18.0	106.0	100.	20.4	107.2	23.0	107.8	139.
10 900	14.8	105.2	14.9	105.2	6.0	0.0	15.7	109.0	127.	16.5	112.3	17.2	120.7	830.
10 906	15.2	105.8	15.9	105.9	42.4	0.0	18.8	108.3	152.	21.0	109.4	23.1	109.4	144.
10 912	15.7	106.1	15.8	106.3	12.5	0.0	18.6	107.8	72.	20.8	108.8	23.7	109.1	133.
10 918	16.3	106.6	16.4	106.5	8.2	0.0	18.3	107.6	50.	20.5	108.6	23.4	109.3	0.
101000	16.6	107.0	16.6	107.0	0.0	0.0	18.4	108.5	8.	20.2	109.8	22.3	110.4	0.
101006	17.0	107.4	17.0	107.3	5.6	0.0	18.9	108.6	19.	21.0	109.4	23.3	109.2	0.
101012	17.4	107.8	17.4	107.8	0.0	0.0	19.3	109.0	45.	21.4	109.6	23.7	109.4	0.
101018	17.8	108.2	17.8	108.3	5.6	0.0	19.7	109.5	99.	21.9	109.8	24.8	109.0	0.
101100	18.3	108.6	18.3	108.4	11.2	0.0	20.3	109.4	176.	23.5	109.5	0.	0.0	0.
101106	19.0	108.7	18.6	108.5	26.5	0.0	20.7	108.8	192.	22.6	108.9	25.0	108.3	0.
101112	19.8	108.6	19.8	108.4	11.0	0.0	23.0	107.8	68.	0.0	0.0	0.0	0.0	0.
101118	20.7	108.1	20.7	108.1	0.0	0.0	24.2	106.9	0.	0.0	0.0	0.0	0.0	0.
101200	21.6	107.7	22.2	107.0	0.0	0.0	0.0	0.0	0.	0.0	0.0	0.0	0.0	0.
101206	23.5	107.0	23.3	106.8	0.0	0.0	0.0	0.0	0.	0.0	0.0	0.0	0.0	0.
101212	23.7	106.5	23.5	106.7	0.0	0.0	0.0	0.0	0.	0.0	0.0	0.0	0.0	0.
101218	0.0	0.0	0.0	0.0	0.0	0.0	0.0	0.0	0.	0.0	0.0	0.0	0.0	0.

MEAN VECTOR ERRORS (N.MI)
NUMBER OF CASES
STOP
R

90.
12

158.
8

311.
4

TABLE 16

TROFSTV
STORM NUMBER=5

H.OTIS 24

DATE/TIME (GMT)	BEST TRACK		OPERATIONAL POSITION		POSITION ERROR (N.M.I.)		24 HOUR FORECAST LAT. LONG.		48 HOUR FORECAST LAT. LONG.		72 HOUR FORECAST LAT. LONG.		ERROR (N.M.I.)
	LAT.	LONG.	LAT.	LONG.	ERROR (N.M.I.)	ERROR (N.M.I.)	LAT.	LONG.	LAT.	LONG.	LAT.	LONG.	
102400	10.7	98.8	10.5	99.0	16.8	11.6	101.3	77.	0.0	0.0	0.0	0.0	0.
102406	11.0	100.3	11.4	100.4	24.7	13.4	104.5	119.	15.5	108.2	16.5	110.4	501.
102412	11.2	101.4	11.6	101.2	26.6	13.7	104.7	123.	15.5	107.3	17.4	109.3	413.
102418	11.4	102.0	11.4	102.4	33.3	12.0	106.2	223.	12.8	109.9	13.7	112.8	563.
102500	11.9	102.4	11.7	102.6	16.7	12.2	104.9	200.	13.0	106.7	13.2	108.9	310.
102506	12.4	102.6	12.3	102.8	13.0	14.1	104.7	186.	16.0	106.5	17.8	108.3	262.
102512	12.8	102.7	12.8	102.8	5.7	15.1	103.4	113.	16.8	104.3	18.4	105.8	140.
102518	13.4	102.5	12.9	102.5	30.0	14.9	102.7	71.	17.2	103.0	0.0	0.0	0.
102600	13.7	102.2	13.8	101.9	18.4	16.6	100.0	186.	0.0	0.0	0.0	0.0	0.
102606	14.0	101.9	14.1	101.5	23.9	15.9	100.1	158.	0.0	0.0	0.0	0.0	0.
102612	14.0	101.9	13.9	101.9	6.0	15.7	101.7	96.	0.0	0.0	0.0	0.0	0.
102618	14.0	101.9	14.0	101.9	0.0	15.5	102.0	78.	17.8	102.4	0.0	0.0	0.
102700	14.0	101.9	14.1	101.9	6.0	15.2	102.1	105.	17.8	102.6	0.0	0.0	0.
102706	14.2	102.2	14.1	102.1	8.3	14.9	102.3	131.	15.7	102.3	16.6	102.2	0.
102712	14.5	102.8	14.5	102.8	0.0	16.2	104.3	40.	17.9	105.7	20.0	106.7	0.
102718	14.8	103.5	14.9	103.2	17.9	16.8	104.9	72.	19.0	105.6	0.0	0.0	0.
102800	15.1	104.1	15.0	103.9	12.7	16.6	105.6	144.	19.6	108.0	21.6	106.8	0.
102806	15.8	104.8	15.4	104.5	29.5	17.3	106.5	144.	19.6	108.0	22.0	108.5	0.
102812	16.7	105.4	16.2	105.0	37.6	18.8	106.8	127.	20.5	107.7	22.6	108.0	0.
102818	17.8	105.6	17.8	105.6	0.0	21.3	106.8	46.	0.0	0.0	0.0	0.0	0.
102900	18.8	105.8	19.0	105.8	0.0	0.0	0.0	0.	0.0	0.0	0.0	0.0	0.
102906	19.8	105.9	19.6	105.8	0.0	0.0	0.0	0.	0.0	0.0	0.0	0.0	0.
102912	20.7	105.9	20.7	105.8	0.0	0.0	0.0	0.	0.0	0.0	0.0	0.0	0.
102918	21.6	105.9	21.5	106.0	0.0	0.0	0.0	0.	0.0	0.0	0.0	0.0	0.
103000	22.5	105.8	22.3	105.8	0.0	0.0	0.0	0.	0.0	0.0	0.0	0.0	0.
103006	0.0	0.0	0.0	0.0	0.0	0.0	0.0	0.	0.0	0.0	0.0	0.0	0.
103012	0.0	0.0	0.0	0.0	0.0	0.0	0.0	0.	0.0	0.0	0.0	0.0	0.
103018	0.0	0.0	0.0	0.0	0.0	0.0	0.0	0.	0.0	0.0	0.0	0.0	0.

MEAN VECTOR ERRORS (N.M.I.)
NUMBER OF CASES
STOP
R

122.
20
252.
13
365.
6

TABLE 17