

1      **Assimilation of GOES-R Geostationary Lightning Mapper Flash Extent Density**  
2      **data in GSI 3DVar, EnKF, and Hybrid En3DVar for the Analysis and Short-Term**  
3                      **Forecast of a Supercell Storm Case**

4  
5                      **Rong Kong<sup>1</sup>, Ming Xue<sup>\*2</sup>, Edward R. Mansell<sup>3</sup>, Chengsi Liu<sup>1</sup>,**  
6                      **Alexandre O. Fierro<sup>4</sup>**

7                      *<sup>1</sup> Center for Analysis and Prediction of Storms*

8                      *<sup>2</sup> University of Oklahoma, Norman Oklahoma 73072*

9                      *<sup>3</sup> NOAA/National Severe Storms Laboratory, Norman, Oklahoma*

10                      *<sup>4</sup> Zentralanstalt für Meteorologie und Geodynamik, Department of Forecasting Models –*  
11                      *ZAMG. Vienna, Austria<sup>1</sup>*

12  
13                      **ABSTRACT**

14                      Capabilities to assimilate Geostationary Operational Environmental Satellite “R-  
15                      series” (GOES-R) Geostationary Lightning Mapper (GLM) flash extent density (FED) data  
16                      within the operational Gridpoint Statistical Interpolation ensemble Kalman filter (GSI-  
17                      EnKF) framework were previously developed and tested with a mesoscale convective  
18                      system (MCS) case. This study further develops such capabilities to assimilate GOES GLM  
19                      FED data within the GSI ensemble-variational (EnVar) hybrid data assimilation (DA)  
20                      framework. The results of assimilating the GLM FED data using 3DVar, and pure  
21                      En3DVar (PEn3DVar, using 100% ensemble covariance and no static covariance) are  
22                      compared with those of EnKF/DfEnKF for a supercell storm case. The focus of this study

---

\*Corresponding author: Ming Xue  
Email: mxue@ou.edu

is to validate the correctness and evaluate the performance of the new implementation rather than comparing the performance of FED DA among different DA schemes. Only results of 3DVar and pEn3DVar are examined and compared with EnKF/DfEnKF. Assimilation of a single FED observation shows that the magnitude and horizontal extent of the analysis increments from PEn3DVar are generally larger than from EnKF, which is mainly caused by using different localization strategies in EnFK/DfEnKF and PEn3DVar as well as the integration limits of the graupel mass in the observation operator. Overall, the forecast performance of PEn3DVar is comparable to EnKF/DfEnKF, suggesting correct implementation.

**Key words:** GOES-R, lightning, convective-scale, data assimilation, EnKF, EnVar.

**Article Highlights:**

- Implement GOES-R GLM FED data within the GSI ensemble-variational (EnVar) hybrid data assimilation (DA) framework.
- Forecast performance of PEn3DVar is comparable to EnKF but their analyses are different, due to different localization strategies being used as well as the integration limits of the graupel mass in the observation operator.

## 1. Introduction

High spatio-temporal resolution lightning data offer a reliable complement to radar data that can be assimilated into convection-allowing NWP models, especially in regions where the Next-Generation Radar (NEXRAD, Doviak et al., 2000) Weather Surveillance Radar-1998 Doppler (WSR-88D) radar coverage is poor or absent, such as in mountainous areas due to beam blockage, or in oceanic regions beyond the range of ground-based radars. Efforts have been made to assimilate lightning data into convection-allowing NWP models using nudging (e.g., Fierro et al., 2012; Marchand and Fuelberg, 2014; Fierro et al., 2015), 3DVar (Fierro et al., 2016; Fierro et al., 2019; Hu et al., 2020), 4DVar (Xiao et al., 2021) and EnKF methods (Mansell, 2014; Allen et al., 2016). Results show that assimilating either cloud-to-ground (CG), and especially total (CG plus intra-cloud) lightning data often produce forecast improvements comparable to those from assimilating ground-based radar data (Fierro et al., 2016). Among these studies, Mansell (2014) assimilated explicitly-simulated flash extent density (FED) data, and Allen et al. (2016) assimilated pseudo-geostationary lightning mapper (GLM, Goodman et al., 2013) observations derived from ground-based lightning mapping array (LMA, Rison et al., 1999; MacGorman et al., 2008) data, both using the more advanced ensemble Kalman filter (EnKF, Evensen, 1994) method. Here FED is a type of lightning flash rate and can be concisely defined as the total number of lightning flashes occurring within a given atmospheric column over a specified period (Lojou and Cummins, 2005). The readers are referred to Bruning et al. (2019) for more information on the derivation of GLM FED data. Observation operators for FED that depend on graupel echo volume or graupel mass were developed, based on output data from storm-scale simulations conducted with explicit electrification physics (Mansell et al., 2002, 2005; Allen et al., 2016). With these observation operators, the FED is linearly

related to the total graupel mass or graupel volume within the FED pixel column. Other studies by Fierro et al. (e.g., Fierro et al., 2012), Marchand and Fuelberg (2014) and Qie et al. (2014) assimilated some form of pseudo data (water vapor mass, temperature, or ice-phase particles) derived from the lightning data either through nudging or 3DVar, and such assimilation was shown to improve convective initialization and short-term forecasts.

The GLM instruments on the GOES-R series geostationary satellites detect the light emitted by lightning at the cloud tops and collects information about total lightning discharges (Goodman et al., 2013). The GOES-R GLM is able to continuously detect total lightning activity (intra-cloud plus CG) over the Americas and adjacent oceanic regions with a spatial resolution/footprint ranging from 8-km near the center of the field of view (near nadir) to about 12 km near the edges. GLM records information such as the frequency, location, optical energy, and extent of light emitted from lightning discharges to better depict the presence of developing and intensifying thunderstorms. NOAA/NASA maintains two GOES-R series operational geostationary satellites: GOES-16 in the GOES-East position and GOES-17 in the GOES-West position. Operational datasets from these satellites have been made available since late 2017 and early 2019, respectively. In March 2022, GOES-18 was launched into space and went into operational service as GOES-West on Jan. 4, 2023, replacing GOES-17.

Recently, real GLM lightning observations have been successfully assimilated (e.g., Fierro et al. (2019), Hu et al. (2020), and Kong et al. (2020)). Fierro et al. (2019) and Hu et al. (2020) used indirect assimilation of lightning (flash density rates) through pseudo-observations for water vapor mass derived from GLM lightning observations with a 3DVar system (Gao et al., 2016; Wang et al., 2018). Kong et al. (2020) assimilated GLM lightning (flash extent data) more directly using an EnKF method. In Fierro et al. (2019), the added

value of lightning DA was investigated by assimilating Level II radar data with and without GLM-derived water vapor pseudo-observations for a group of severe convective storms. The GLM and radar assimilation experiments yielded short-term forecast improvements that were superior to those of a control run assimilating no data, with results on a par with previous studies assimilating pseudo-GLM observations (Fierro et al., 2015; Fierro et al., 2016).

Kong et al. (2020) was the first study to use an EnKF method to directly assimilate real GOES-R lightning observations. In their proof-of-concept study, the capabilities to assimilate GLM FED data were implemented into the NCEP operational EnKF DA system (Gridpoint Statistical Interpolation, GSI, Kleist et al., 2009a) and tested for a mesoscale convective system (MCS). FED observation operators based on graupel mass or graupel volume were used, and the results were compared to a control experiment that did not assimilate any data. The direct assimilation of FED observations was shown to noticeably improve the analysis and prediction of the MCS for up to several hours. Akin to the indirect methods, EnKF FED DA is effective in identifying and properly initializing regions of intense convection, which helps improve shorter term forecasts of high impact convective events. Direct and indirect adjustments to graupel and other model state variables through the ensemble covariances helped produce more balanced analyses and, thus, improved forecasts.

EnKF methods derive background error covariance from an ensemble of forecasts. The hybrid ensemble-variational (EnVar) DA technique employs a combination of ensemble-derived covariances and static covariances (typically used in 3DVar) to help alleviate the problems with covariance matrix rank deficiency and other issues (Hamill and Snyder, 2000; Lorenc, 2003; Etherton and Bishop, 2004; Buehner et al., 2010). Hybrid EnVar

capabilities have been implemented within the NCEP operational GSI (Kleist et al., 2009b) DA framework and are used operationally in the Global Data Assimilation System (GDAS, Hamill et al., 2011; Kleist and Ide, 2015), the regional North American Mesoscale (NAM) Data Assimilation System (Wu et al., 2017), and the Rapid Refresh (RAP, Benjamin et al., 2016) DA system (Pan et al., 2014; Hu et al., 2017). For both the NAM and RAP, the operational EnVar DA systems borrow ensemble perturbations from the GDAS EnKF although coupling EnVar with one's own EnKF system is most desirable and has been tested earlier for prototype RAP configurations (Pan et al., 2014; Pu et al., 2016; Lu et al., 2017; Pan et al., 2018).

An earlier effort geared toward lightning data assimilation (LDA) using the hybrid ensemble-variational DA method can be found in Apodaca et al. (2014). In their study, pseudo-GLM data (derived from the ground-based lightning network) was assimilated using a hybrid EnVar DA method and applied to mesoscale models in which deep convection cannot be explicitly resolved. Their operator started with an approximate calculation of vertical velocity from Nonhydrostatic Mesoscale Model core of the Weather Research and Forecasting system (WRF-NMM), using a reduced version from the nonhydrostatic continuity equation. Although the operator can analyze some updrafts that are linked to other state variables through continuity equation, the relative coarser grid resolution (e.g., 9 km in their study) is not suitable for convective scale DA.

Towards the eventual goal of operational implementation at NCEP, the convective-scale EnKF DA capability for GLM FED data in Kong et al. (2020) was implemented within the operational GSI EnKF framework. Given that hybrid EnVar is the current method of choice for the two operational regional forecasting systems (NAM and RAP), it is naturally desirable to implement and test hybrid EnVar DA capability for FED data

within the GSI framework. This study aims at validating the correctness and evaluating the performance of the new implementation. In contrast to EnKF, EnVar obtains its analysis by minimizing a cost function, as in 3DVar. In fact, it builds upon the GSI 3DVar framework using the extended control variable algorithm of Lorenc (2003). The 3D version of EnVar is referred to as En3DVar (Liu and Xue, 2016).

Specifically, this study includes three overarching goals: 1) to implement GLM FED DA capabilities into the operational GSI EnVar that is coupled with GSI EnKF, 2) to compare the performances of FED DA using EnKF and En3DVar to see whether comparable results can be obtained between En3DVar and EnKF, and 3) to evaluate the benefit of FED DA to short-range forecasts of a supercell storm case. Apart from lightning and precipitation, we also evaluate the ability of FED DA to improve the updraft helicity track forecast for the supercell storm case, which is commonly used as a proxy for tornado prediction in operational centers (Kain et al., 2008; Sobash et al., 2016).

## **2. Assimilation methods and procedures**

### ***2.1 The EnKF and DfEnKF algorithm***

The EnKF within GSI uses a scalable implementation of the ensemble square root filter (EnSRF, Whitaker and Hamill, 2002), which updates state variables and pre-calculated observation priors independently (Anderson and Collins, 2007). The scalable implementation is equivalent to the traditional algorithm that updates state variables and recalculate observation priors when using linear observation operators, and it can produce qualitatively similar results as the traditional EnKF for practical NWP applications (Anderson and Collins, 2007). For more detailed information about the updating equations of the GSI EnKF algorithm, the reader is invited to consult Kong et al. (2020).

To facilitate more direct comparison between EnKF and pure En3DVar (PEn3DVar) that uses 100% ensemble covariance (as in EnKF), a deterministic EnKF (DfEnKF) algorithm introduced by Kong et al. (2018) is also adopted here. In DfEnKF, an additional deterministic forecast (separate from the ensemble members) is updated using the same EnKF equation that is used to update the ensemble mean. The updated state becomes the initial condition for the deterministic forecast of the next cycle. The En3DVar is a deterministic algorithm as well; it updates a single background forecast variationally, utilizing the same ensemble perturbations as DfEnKF from a (one-way) coupled EnKF system (see, e.g., Fig. 1 of Pan et al. 2014). Given that pure En3DVar is one-way coupled with the EnKF, as is DfEnKF, the results between PEn3DVar and DfEnKF could be similar but not necessarily the same. First, for EnKF/DfEnKF, observations are assimilated serially (one after another), while for PEn3DVar, all observations are assimilated globally (at the same time). Analyses could be different when the observation operator is nonlinear. Second, for EnKF and DfEnKF, localizations are conducted between the model and the observation space, while for En3DVar, localizations are conducted purely in the model space.

## 2.2 The En3DVar algorithm

The hybrid En3DVar algorithm based on the extended control variable method of Lorenc (2003) is used in GSI, in which the full-rank static background error covariances and the rank-deficient ensemble covariances are combined through the introduction of a set of extended control vectors. The analysis increment is given by

$$\delta \mathbf{x}_a = \mathbf{x}_a - \mathbf{x}_b = \delta \mathbf{x}_1 + \delta \mathbf{x}_2, \quad (1)$$

where  $\delta \mathbf{x}_1$  and  $\delta \mathbf{x}_2$  are the analysis increments related to the static and ensemble background error covariances, respectively.



$$\delta \mathbf{x}_2 = \sum_{i=1}^N (\mathbf{x}'_{bi} \circ \mathbf{a}_i). \quad (2)$$

Here  $\mathbf{a}_i$  is the extended control variable (vector);  $\mathbf{x}'_{bi}$  is a vector of ensemble perturbations (for the  $i^{th}$  member) normalized by  $\sqrt{N-1}$  with  $N$  being the ensemble size.  $\mathbf{x}'_{bi} = \mathbf{x}_{bi} - \bar{\mathbf{x}}^b$  are the ensemble perturbations, and  $\bar{\mathbf{x}}^b = \frac{1}{N} \sum_{i=1}^N \mathbf{x}_{bi}$  is the ensemble mean. The total analysis increment  $\delta \mathbf{x}_a$  is obtained by minimizing the following cost function:

$$J(\delta \mathbf{x}_1, \mathbf{a}) = \frac{1}{2} \beta_1 \delta \mathbf{x}_1^T \mathbf{B}^{-1} \delta \mathbf{x}_1 + \frac{1}{2} \beta_2 \mathbf{a}^T \mathbf{A}^{-1} \mathbf{a} + \frac{1}{2} \left( \mathbf{H} \delta \mathbf{x}_1 + \mathbf{H} \sum_{i=1}^N (\mathbf{x}'_{bi} \circ \mathbf{a}_i) + \mathbf{d} \right)^T \mathbf{R}^{-1} \left( \mathbf{H} \delta \mathbf{x}_1 + \mathbf{H} \sum_{i=1}^N (\mathbf{x}'_{bi} \circ \mathbf{a}_i) + \mathbf{d} \right), \quad (3)$$

$$\frac{1}{\beta_1} + \frac{1}{\beta_2} = 1. \quad (4)$$

where  $1/\beta_1$  and  $1/\beta_2$  are the weights given to the static and ensemble background error covariances, respectively. A hybrid solution is derived by setting  $1/\beta_1$  or  $1/\beta_2$  to values between 0 and 1.  $\mathbf{B}$  is the static background error covariance matrix and  $\mathbf{A}$  is the matrix used to localize the ensemble background error covariance.  $\mathbf{d}$  is the observation innovation vector,  $\mathbf{H}$  is the linearized observational operator, and  $\mathbf{R}$  is the (diagonal) observation error covariance matrix. When the weight for the static (ensemble) background error covariance is 0, the hybrid algorithm degenerates to pure En3DVar (pure 3DVar).

In this study, temperature-dependent background error profiles for hydrometeor mixing ratios proposed by Liu et al. (2019) are adopted when constructing the static background error  $\mathbf{B}$  to generate more reasonable graupel increments.

As in Kong et al. (2018), the hybrid En3DVar system is one-way coupled with EnKF. With one-way coupling, it is easier to separate En3DVar from EnKF when comparing their relative performance and understanding their respective behaviors. In general, little difference is expected between one-way and two-way coupled EnKF-En3DVar when the DA cycles are run for a short period (Pan et al., 2014). For long, continuously cycled DA systems, however, two-way coupling is strongly recommended since divergence between the EnKF and En3DVar systems can occur with time in a one-way coupling mode (Pan et al., 2014).

### ***2.3 The FED observation operator***

The tuned FED observation operator used in this study is based on graupel mass instead of graupel echo volume (Kong et al. (2020)). The graupel-volume-based FED observation operator cannot be easily used in a variational framework, because of the zero gradient of the cost function when differentiated with respect to the graupel mixing ratio. This is because the graupel volume is no longer sensitive to graupel mixing ratio once its value exceeds the threshold (e.g.,  $0.5 \text{ g kg}^{-1}$ ) used to define the graupel volume. The FED observation operator based on graupel mass (GM in kg) from Kong et al. (2020) is given by

$$\text{FED} = 1.044 \times 10^{-8} (\text{GM}). \quad (5)$$

This operator has been tuned through sensitivity experiments and the coefficient has been multiplied by a factor of 0.5 compared to the original operator used in Allen et al. (2016). Similar to Mansell (2014) and Allen et al. (2016), the graupel mass within each grid cell is summed over a volume spanning the vertical depth of the model and covering a  $15 \times 15 \text{ km}^2$  horizontal area that is centered on the observation pixels, so that the lightning occurring in the vicinity of a typical GLM  $8 \times 8 - 12 \times 12 \text{ km}^2$  pixel can be accounted for.

Through the observation operator, information of lightning observations can be transferred in the variational analysis to the graupel mixing ratio due to its direct linkage with the FED observations. Other state variables (water vapor mixing ratio, temperature, and vertical velocity, etc.) are linked through the ensemble-derived background error covariances. When pure static background error covariance is used in 3DVar, only graupel mixing ratio is directly updated by FED observations (due to lacking cross-variable correlations in the static background error covariance  $\mathbf{B}$ ), although other state variables can respond to the FED DA during the forecast period through microphysical or thermodynamical adjustments.

The implementation of the FED observation operator involves the integration of the graupel mass field over a fixed area ( $15 \times 15 \text{ km}^2$  in our case) centered on the observation. The number of model columns being used for integration is determined adaptively based on model resolution. For example, a  $5 \times 5$  region would be used for horizontal integration on a 3-km model grid and  $15 \times 15$  for the 1-km model grid used here.

### **3. Simulation setup and experimental design**

#### ***3.1 GOES-R GLM-FED data and their processing***

The FED observations were derived from the GOES-16 level-2 GLM data, which are provided in 20-sec packets with an 8 - 12 km pixel resolution over the Contiguous United States (CONUS, Goodman et al., 2013). The level-2 data include three different primary lightning metrics - i.e., the flashes, groups and events - which are governed by specific parent-to-child relationships (Goodman et al., 2013; Bruning et al., 2019). Similar to Kong et al. (2020), the lightning observations are mapped onto 10-km grid pixels to obtain the FED observations, with the number identification of the groups and flashes being tracked

to each matching event. The number of events is directly used to calculate the FED, which by definition increments by one for each flash on each pixel (in contrast to flash source densities). More details on the FED data processing can be found in Kong et al. (2020).

### ***3.2 Forecast model setup and initialization of ensembles***

The Advanced Research WRF (ARW) model is used in this study, which is a three-dimensional compressible non-hydrostatic NWP model (Skamarock et al., 2008). The model uses a  $600 \times 600$  grid with 1-km horizontal grid spacing on a single domain and has 53 stretched vertical grid levels with a model top set at about 21 km.

Similar to the configurations of Kong et al. (2020), 40 initial ensemble members are generated based on the deviations of the 2100 UTC analyses of the NCEP operational Short-Range Ensemble Forecast system (SREF, which has 26 members with a 16-km horizontal resolution) from the 3-h North American Model (NAM) forecast (with a 12-km horizontal grid spacing) valid at the same time. The deviations are reduced by 25% (determined through experimentation), and their negative versions are combined to produce a total of 40 perturbations. Following Tong and Xue (2008), Snook et al. (2012), and Johnson et al. (2014), additional smoothed small-scale random perturbations with Gaussian distribution are added to the horizontal components of wind field, potential temperature, and humidity fields to introduce convective-scale perturbations. The initial ensembles are then advanced one hour to 2200 UTC, with the same surface and boundary parameterizations and 6-class Thompson bulk microphysical scheme (Thompson et al., 2008). More details on the physics options can be found in Kong et al. (2020).

### ***3.3 Design of data assimilation experiments***

As mentioned in section 2c, the graupel-mass-based observation operator from Kong et al. (2020) was used in this study. The assimilation of GLM FED data using 3DVar, EnKF, and pure En3DVar methods are evaluated against each other. Their results are also compared with a control experiment (CTRL) that does not assimilate any data. Since the purpose of this study is to validate the correctness of the implementation of FED DA within the GSI variational DA framework, only 3DVar and pure En3DVar (instead of hybrid En3DVar) are tested. More detailed information about different DA experiments is provided in Table 1.

**Table 1.** Descriptions of the DA experiments.

Experiment	Use of background error covariance
CTRL (no DA)	N/A
EnKF	100% ensemble covariance
DfEnKF	100% ensemble covariance
3DVar	100% static & 0% ensemble covariance
PEn3DVar	0% static & 100% ensemble covariance

FED observations are assimilated in 5-min intervals over a 1-h period in all DA experiments as in Kong et al. (2020). To help suppress spurious storms in the background, zero FED observations are also assimilated. A 0.95 adaptive posterior inflation that relaxes the posterior spread to the prior spread (Whitaker and Hamill, 2012; Kotsuki et al., 2017; Maldonado et al., 2020) is used to help maintain ensemble spread. The FED operator is a vertical integral of graupel mass, and, like the GLM FED observations, has no inherent vertical location. Nevertheless, we need to specify the height of the FED observation for vertical covariance localization in EnKF (which uses observation-space localization). The FED observation is assigned to an assumed height of 6.5 km in the EnKF (Allen et al. 2016; Kong et al. 2020), which generally falls within the mixed-phase region where most

lightning initiates. This is not needed in En3DVar because localization is conducted in the model instead of observation space. Similar to Allen et al. (2016) and Kong et al. (2020), the horizontal and vertical localization radii in the EnKF are set to 15 km and -4 in  $\log(P/P_{ref})$  space ( $\sim 32$  km on average). With the large vertical localization radius, there is effectively no vertical localization, and the FED observations are allowed to influence the whole vertical depth. The actual spatial spreading of analysis increments is governed by the ensemble covariance (Kong et al., 2020). This is confirmed by single observation experiment, where results are found to be insensitive to the specified height of the FED observation (results not shown). In 3DVar and hybrid En3DVar, the decorrelation length scale for the static background error covariances  $\mathbf{B}$  is set to 6 km in the horizontal and to 1.5 grid points in the vertical (tuned through experiment), which are larger than those used in Hu et al. (2020). Because the graupel mass observation operator is integrated over a  $15 \times 15$  km<sup>2</sup> column, the FED observation does influence a much larger area than that implied by the decorrelation length scale of  $\mathbf{B}$ . The horizontal and vertical decorrelation length scales used to localize the ensemble covariances in En3DVar are 4.1 km and -1.1 in  $\log(P/P_{ref})$  space, respectively, which are equivalent to the cut-off radii of 15 km and -4 in  $\log(P/P_{ref})$  used in EnKF based on Pan et al. (2014). Considering that the flash rates from the GLM are overall smaller than those detected by very-high frequency ground-based LMA (Rison et al., 1999) networks for high-flash-rate storms (Carey et al., 2019), a small observation error of 0.5 flashes min<sup>-1</sup> pixel<sup>-1</sup> is used in this study [as in Kong et al. (2020)]. Moreover, initial sensitivity experiments revealed that setting an observation error smaller than 0.5 flash min<sup>-1</sup> pixel<sup>-1</sup> can result in observation overfitting and numerical instability during model integration.

For the DA experiments, the first analysis is made at 2200 UTC of 1 May 2018, or 1 h into the spinup ensemble forecasts from the perturbed initial conditions (Fig. 1). After the 1-h DA period, a 6-h forecast is made from the final analysis to examine the impact of lightning DA on storm forecasts.

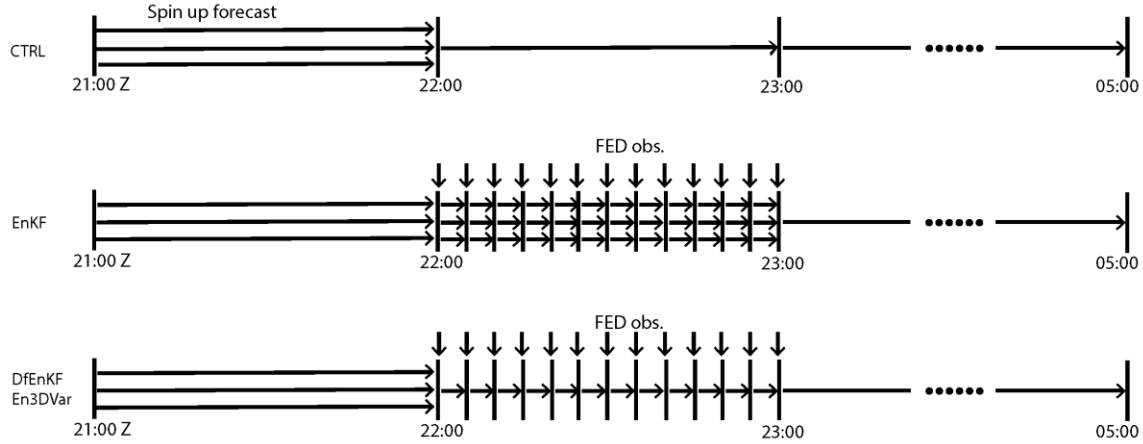


Fig. 1 Flow diagram of the EnKF (middle), 3DVar, and DfEnKF and En3DVar (bottom) DA experiments versus the control run (top). The spin up ensemble forecasts from 2100 UTC through 2200 UTC include 40 members. FED DA occurs between 2200 and 2300 UTC with 5-minute cycles, and a deterministic forecast is launched from the final ensemble mean analysis at 2300 UTC and run to 0500 UTC. The CTRL experiment continues the ensemble forecasts through 2300 UTC without DA, and a single deterministic forecast continues from the ensemble mean forecast at 2300 UTC.

### 3.4 Case overview

A severe weather event occurred in north central Kansas and southern Nebraska in the afternoon and evening of May 1, 2018. Multiple supercells spawned nearly a dozen tornadoes, including a long-track EF-3, across the state of Kansas. The storms were mainly influenced by a stationary front over north-central Kansas (Fig. 2a-d), with favorable wind shear and cold air aloft coupled with an abundant supply of low-level moisture advected from the Gulf of Mexico by the low-level jet. A dryline extending southward from the stationary front across west-central Kansas also triggered scattered thunderstorms. The

333 convective inhibition (CIN) of the 1200 UTC and 1900 UTC soundings from the NWS site  
334 of Dodge City, Kansas (DDC) were  $253 \text{ J Kg}^{-1}$  and  $4 \text{ J Kg}^{-1}$ , respectively. The changes in  
335 boundary-layer thermodynamics (reduction in inhibition vis erosion of the cap by solar  
336 heating) coupled with a progressive destabilization of the environment (60 hPa mixed layer  
337 CAPE at 1900 UTC exceeded  $2000 \text{ J Kg}^{-1}$ ) allowed some cumulus turrets to develop along  
338 the stationary front and along portions of the dry line in central Kansas. At 2100 UTC, a  
339 line of semi-discrete storms developed along the stationary front (Fig. 2a). These cells  
340 within the line progressively moved eastward while intensifying into severe-warned storms  
341 by 2200 UTC (Fig. 2b). Our DA focuses on the period with frequent lightning activity  
342 between 2200 UTC to 2300 UTC May 1<sup>st</sup>. Isolated supercell storms developed over the  
343 next few hours, producing several tornadoes, strong wind events, and reports of hail up to  
344 the size of softballs (10 cm diameter).



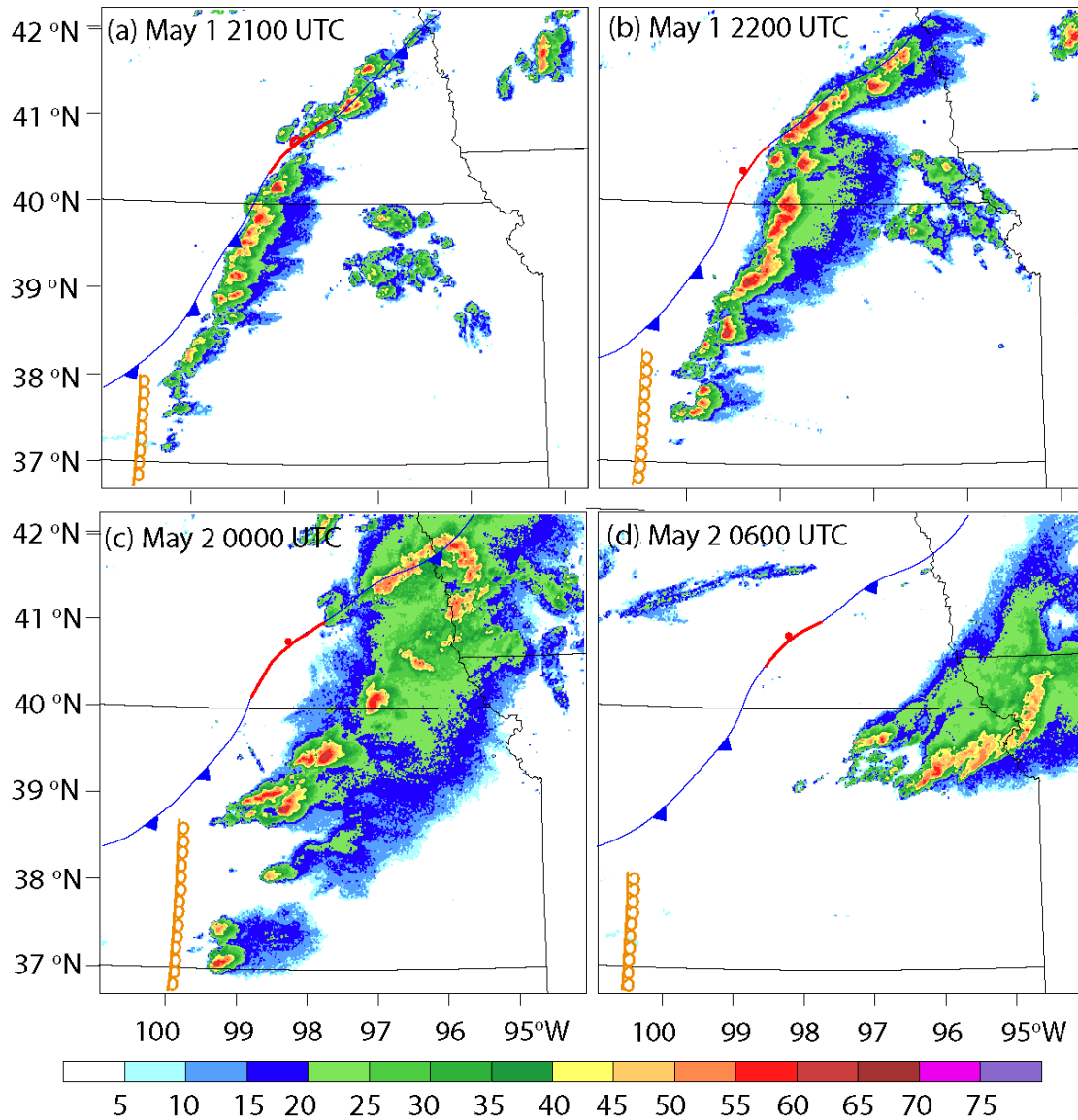


Fig. 2 Locations of the fronts (reproduced based on the surface analysis from the storm prediction center (SPC)), overlaid with the composite reflectivity observations (dBZ) remapped from the WSR-88D radars (shaded contour) on (a) 2100 May 1st, (b) 2200 May 1st, (c) 0000 May 2nd, and (d) 0600 UTC May 2nd, 2018, respectively.

## 4. Results

### 4.1 Convergence of the 3DVar/En3DVar cost function and computational costs of different DA methods.

The convergence of the quadratic cost function is evaluated first to validate the correctness of the FED DA procedure in the variational DA framework. Since the observation operator is linear, the double-loop procedure that is usually used to linearize a nonlinear observation operator (such as for reflectivity) is not needed here. Only one outer loop (with 50 maximum iterations) is used in this study. Figure 3a shows the value of the cost function as a function of iterations in the first FED DA cycle for both cases. Pure 3DVar converges slightly faster than PEn3DVar. Overall, 15 iterations are sufficient for convergence in both 3DVar and PEn3DVar. In our study, 50 iterations are used for all the variational DA experiments to secure convergence of the cost function.

The computational costs of different DA schemes are also compared in Fig. 3b. Overall, the computation cost of EnKF is 60% higher than 3DVar and both are much lower than PEn3DVar, for which the cost function evaluation and minimization consume most of the computational time. The EnKF computation/analysis is performed in the observational space, and thus the computational cost is proportional to the number of observations. The observational density of the two-dimensional FED data is much less than the three-dimensional radar data. If FED data are assimilated together with 3D radar data in EnKF, the additional cost incurred by the FED DA becomes negligible. For EnVar, the computational cost is proportional to the length of state vector, which includes the much larger extended state vector  $\alpha$  (see Eq. (2)).

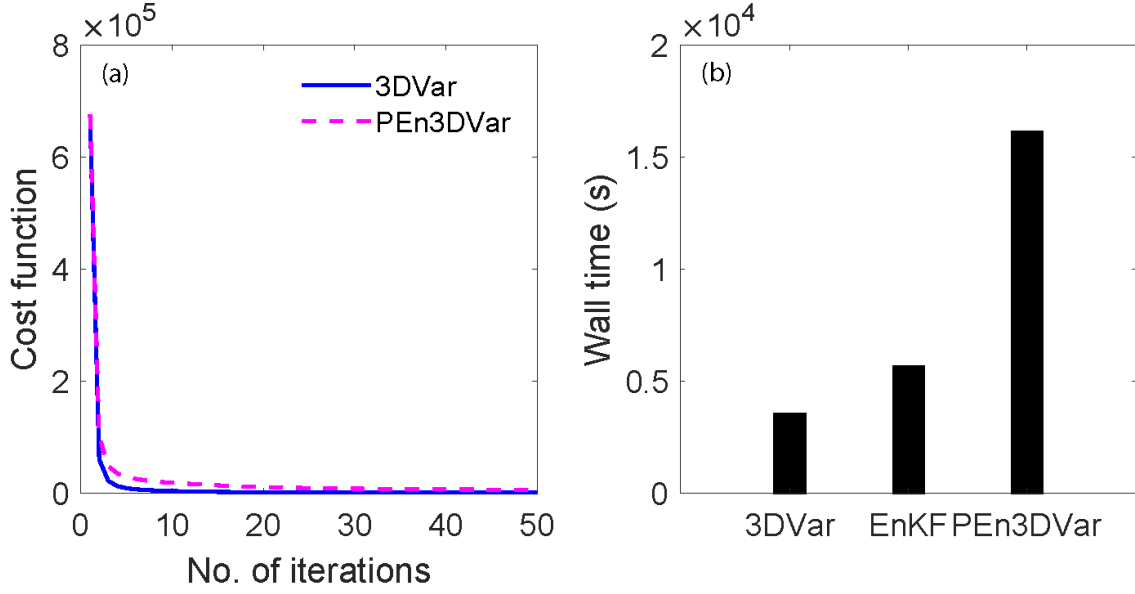


Fig. 3 (a) Value of the cost function as a function of iteration loops for both the 3DVar and PEn3DVar runs (there is only one outer loop, with 50 iterations in the loop) in the 1st analyses and (b) the computational cost (wall time in seconds) of 3DVar, EnKF, and PEn3DVar.

#### 4.2 Single point observation experiment

To demonstrate the direct impacts of lightning DA on the analyses of hydrometeor fields, single point experiments (with grid column  $x=230$ ,  $y=360$  being the closet to the center of the single observation pixel) are conducted and compared between DfEnKF and pure En3DVar that uses 100% ensemble covariance (PEn3DVar). Vertical cross-sections of the analysis increments  $[\mathbf{x}_a - \mathbf{x}_b]$  in Eq. (1)] for mixing ratios of rain, snow, and graupel are made through the single observation point. As in Kong et al. (2020), the horizontal localization radius for the DfEnKF is 15 km (15-km is the zero point) and the vertical localization scale is 4 in logP space. Since the vertical localization radius is very large (about to 32 km on average in vertical), effectively the vertical location is not considered in our DA experiments. To ensure similar localization scales being used in both PEn3DVar and EnKF, equivalent recursive filter length scales based on Pan et al. (2013) are used for localization, which is about 4.11 km in horizontal and 1.10 in logP space for PEn3DVar.

As is shown in Fig. 4, the magnitude and horizontal extent of the analysis increment of the hydrometeors of graupel, snow, and rainwater for PE3DVar (Fig. 4b) are much larger than DfEnKF (Fig. 4a). The differences in the analysis increments probably arise from the localization and the volume integration of the graupel mass in the observation operator. To eliminate the influence caused by horizontal integration of the graupel mass in the FED observation operator, the horizontal integration is arbitrarily turned off and the vertical integration remains unchanged. In other words, the integration is conducted only over a single grid column with a 1 by 1 km<sup>2</sup> area and multiplying by a factor of 15<sup>2</sup> (i.e., the full area) to achieve similar physical meaning as the original operator. The observation operator is only modified to help understand the problem, and the original version was used for the experiments discussed in the following sections. After turning off the horizontal integration in the observation operator, the horizontal extension of the analysis increment from DfEnKF (Fig. 4c) and PEn3DVar (Fig. 4d) becomes very similar. Thus, the horizontal integration in the observation operator is the major cause for the difference in the analysis increment between DfEnKF and En3DVar under the influence of different localization strategies.

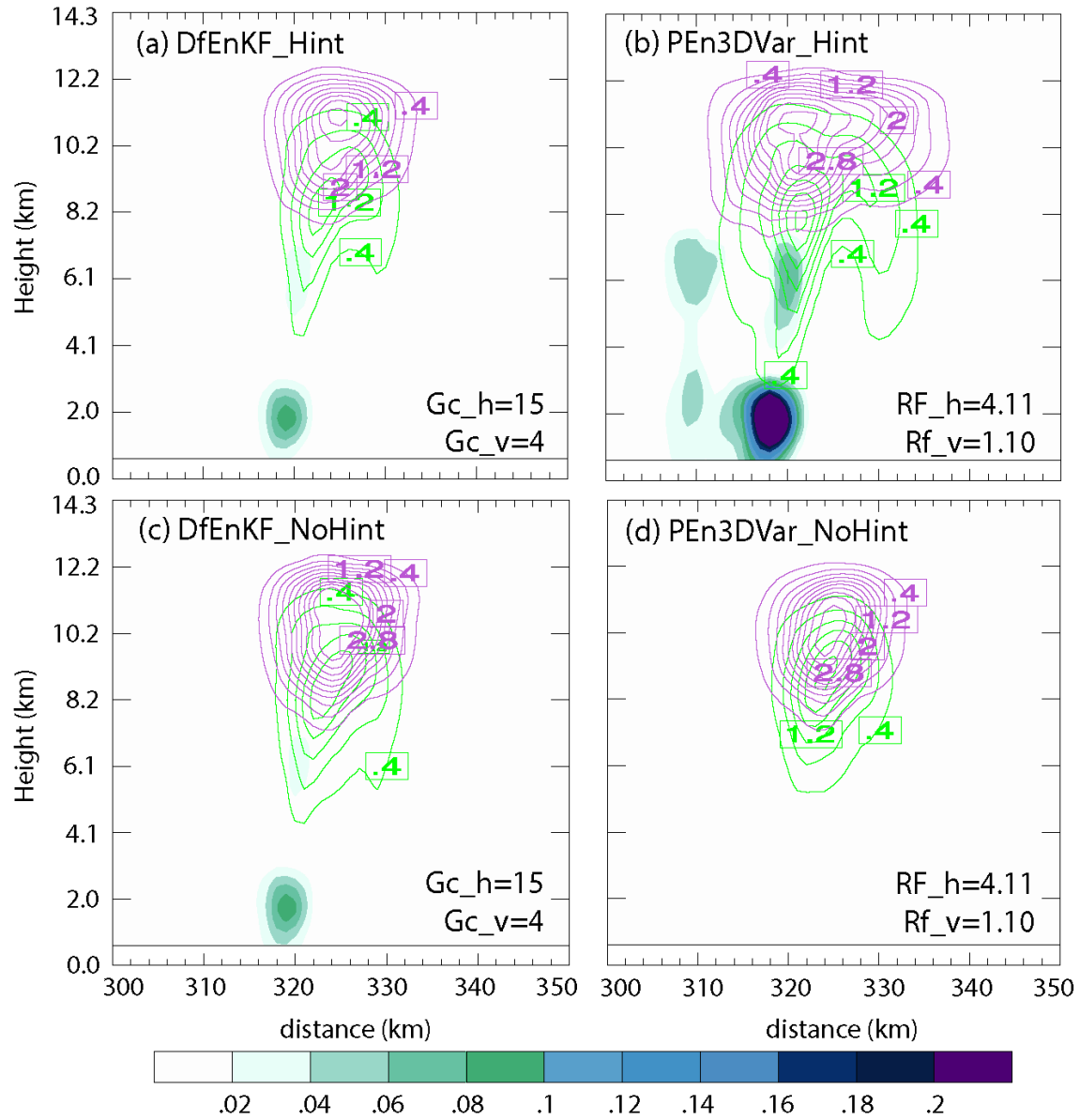


Fig. 4 Vertical cross sections of the mixing ratio increments (g kg<sup>-1</sup>) of rain (shading), snow (purple contours, start from 0.4 with 0.4 g kg<sup>-1</sup> interval), and graupel (green contours, start from 0.4 with 0.4 g kg<sup>-1</sup> interval) after the first analysis of (a, c) DfEnKF and (b, d) PEn3DVar using (a, b) the original observation operator and (c, d) the modified observation operator, respectively. The cross section passes through the observation point (x=230 km, y=360 km).

#### 4.3 Sensitivity of DfEnKF and En3DVar analyses to different localization scales

To further understand the impacts of the difference in localization and integration volume in the observation operator, sensitivity experiments are conducted to assimilate

single FED observation with different horizontal and vertical localization scales. Unlike En3DVar, for which localization is conducted in the model space, EnKF needs the height information of the observation to conduct localization between model and observation space. Following Allen et al. (2016) and Kong et al. (2020), the FED observations are assigned to a height of 6.5 km for DfEnKF DA. When vertical localization radius is small (0.2 in  $\log(P)$  space), the difference between DfEnKF and PEn3DVar is most obvious. As is shown in Fig. 5a, with small vertical localization radius, the analysis increments of graupel field for DfEnKF only exists in the levels round 6.5 km, while the analysis increment of PEn3DVar has more extension in vertical, since localization of En3DVar is conducted in the model space. When increasing the vertical location radius but keeping the horizontal localization the same, the difference between En3DVar and DfEnKF becomes smaller (Figs. 5b, c, f, g). When also increasing the horizontal localization radius to a very large value (e.g., 2000 km cutoff for DfEnKF), the difference between DfEnKF and PEn3DVar becomes very small. Without localization in both the horizontal and vertical directions, DfEnKF and PEn3DVar can get similar analysis increments (Fig. 5d, h).

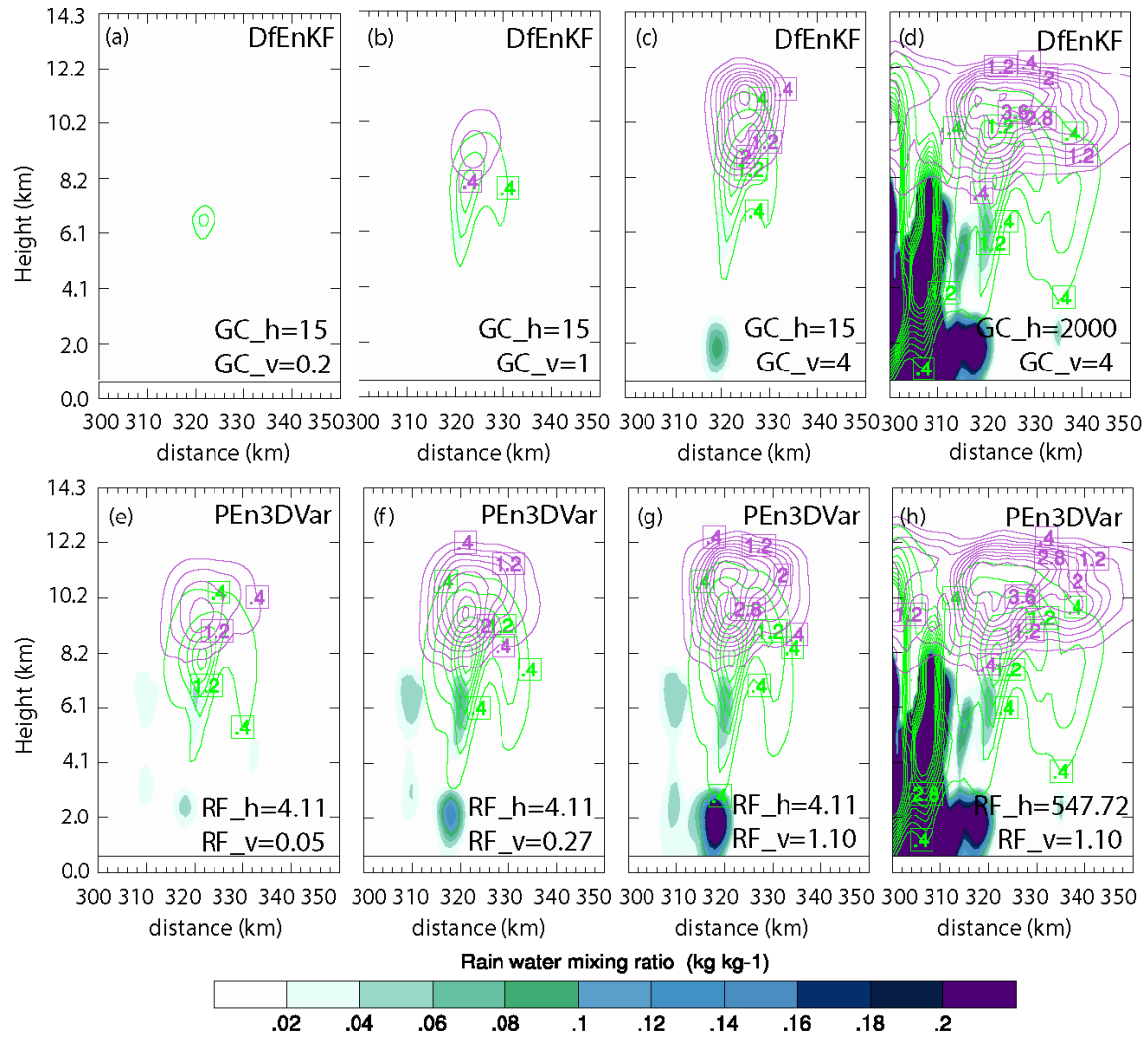


Fig. 5 Vertical cross sections of the mixing ratio increment ( $\text{g kg}^{-1}$ ) of rain (shading), snow (purple contours, start from 0.4 with  $0.4 \text{ g kg}^{-1}$  interval), and graupel (green contours, start from 0.4 with  $0.4 \text{ g kg}^{-1}$  interval) after the first analysis of (a, b, c, d) DfEnKF with horizontal localization of (a, b, c) 15 km (d) 2000 km and vertical localization radius of (a, b) 0.2, 1, (c, d) 4 in  $\log(P)$  space, and (e, f, g, h) PEn3DVar with horizontal recursive filter length scale of (e, f, g) 4.11 km and (h) 547.72 km and vertical localization of (a) 0.05, (b) 0.27, and (c, d) 1.10 in  $\log(P)$  space, respectively. The cross section passes through the observation point ( $x=230 \text{ km}$ ,  $y=360 \text{ km}$ ).

#### 4.4 Comparisons of EnKF, DfEnKF, 3DVar, and PEn3DVar

To evaluate how well the analyses match the observations after 1-h DA, the FED observation operator is applied to the final analysis of the DA experiments and the simulated FEDs are compared with the FED observations. For the FED analyses after 1-h DA, EnKF, DfEnKF, and PEn3DVar are all able to better capture the observed discrete

FED cores corresponding to the three main storm cells, which are more consistent with the observations than 3DVar or CTRL (Fig. 6). The distribution of the FED field from CTRL is too linear and there are obvious location errors. 3DVar produces a poorer FED analysis with more small-magnitude FEDs relative to EnKF, DfEnKF, and PEn3DVar as well as the observations, which is expected since 3DVar only updates graupel field instead of the whole model states as in EnKF/DfEnKF and PEn3DVar during DA.

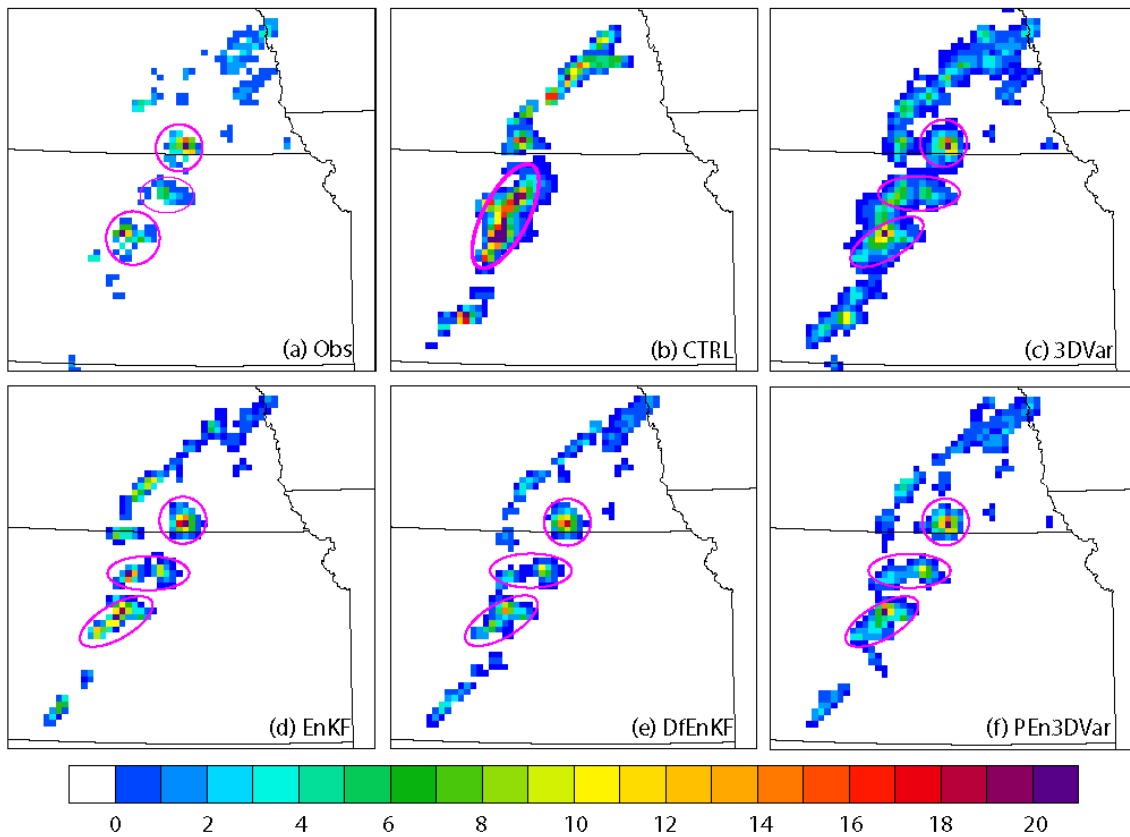


Fig. 6 (a) 1-min FED observations (units: flash  $\text{min}^{-1} \text{pixel}^{-1}$ ) and FED forecasts from (b) CTRL; analyses (after 1-h DA) from (c) 3DVar; (d) EnKF, (e) DfEnKF, and (f) PEn3DVar.

To quantitatively assess the performance of different DA experiments, the root-mean-square innovation (RMSI)s of FED analyses and forecasts within the 1-h DA window and the follow-on 1-4 h FED forecasts for CTRL, 3DVar, EnKF, DfEnKF, and PEn3DVar are



displayed in Fig. 7. Overall, EnKF performs best and has fewer spurious FED areas relative to the other DA methods (Figure not shown). Within the DA cycles, taking the average of ensemble forecasts to obtain ensemble means can lead to weaker FED values and thus has less chance of overestimation (producing less spurious storms, figures not shown) in the EnKF analyses and forecasts relative to DfEnKF and PEn3DVar (which does not involve ensemble mean). 3DVar has smaller RMSI than CTRL during DA, but increases quickly during the 1-h forecasts after the DA. The lack of consistent updating of all state variables is believed to be the main reason.

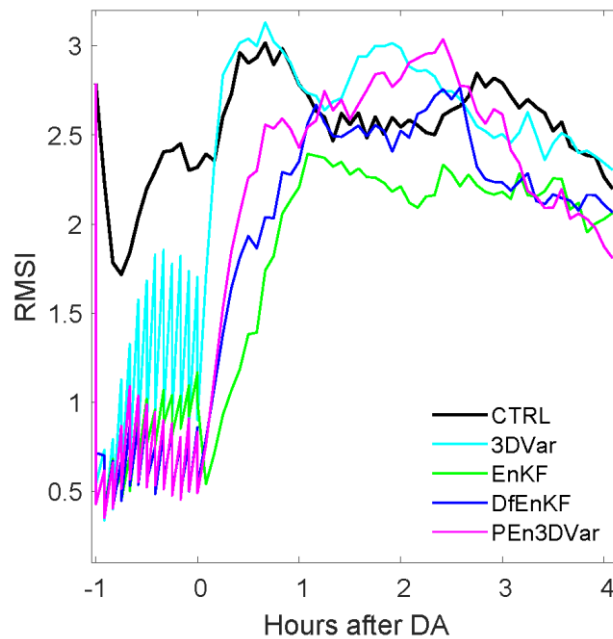


Fig. 7 RMSIs of the FED forecasts (flash  $\text{min}^{-1} \text{pixel}^{-1}$ ) for CTRL; FED analyses and forecasts within the 1-h DA window, and 0-4 h free forecasts for 3DVar, EnKF, DfEnKF, and PEn3DVar, respectively.

To quantitatively evaluate how well different DA experiments capture the structure and intensity of the storms, the 0 - 4 h forecasts of composite reflectivity fields from different experiments are verified against WSR-88D composite reflectivity using the equitable threat score (ETS; Mason, 2003) with 5-km neighborhood radius in Fig. 8. For the threshold of

20 dBZ (Fig. 8a), EnKF outperforms DfEnKF and PEn3DVar, apparently because EnKF generates fewer spurious storms than DfEnKF and PEn3DVar (figures not shown). Both DA methods produce overall better forecasts than 3DVar, which in turn still outperforms CTRL (in terms of ETS). For the threshold of 35 dBZ (Fig. 8b), EnKF produces the best 0-1-h forecast. The ETSs of DfEnKF, PEn3DVar and 3DVar are similar and drop quickly during the first 0.5 h of forecast. For 1 to 3 h, the DA experiments do not exhibit substantial improvements over CTRL.

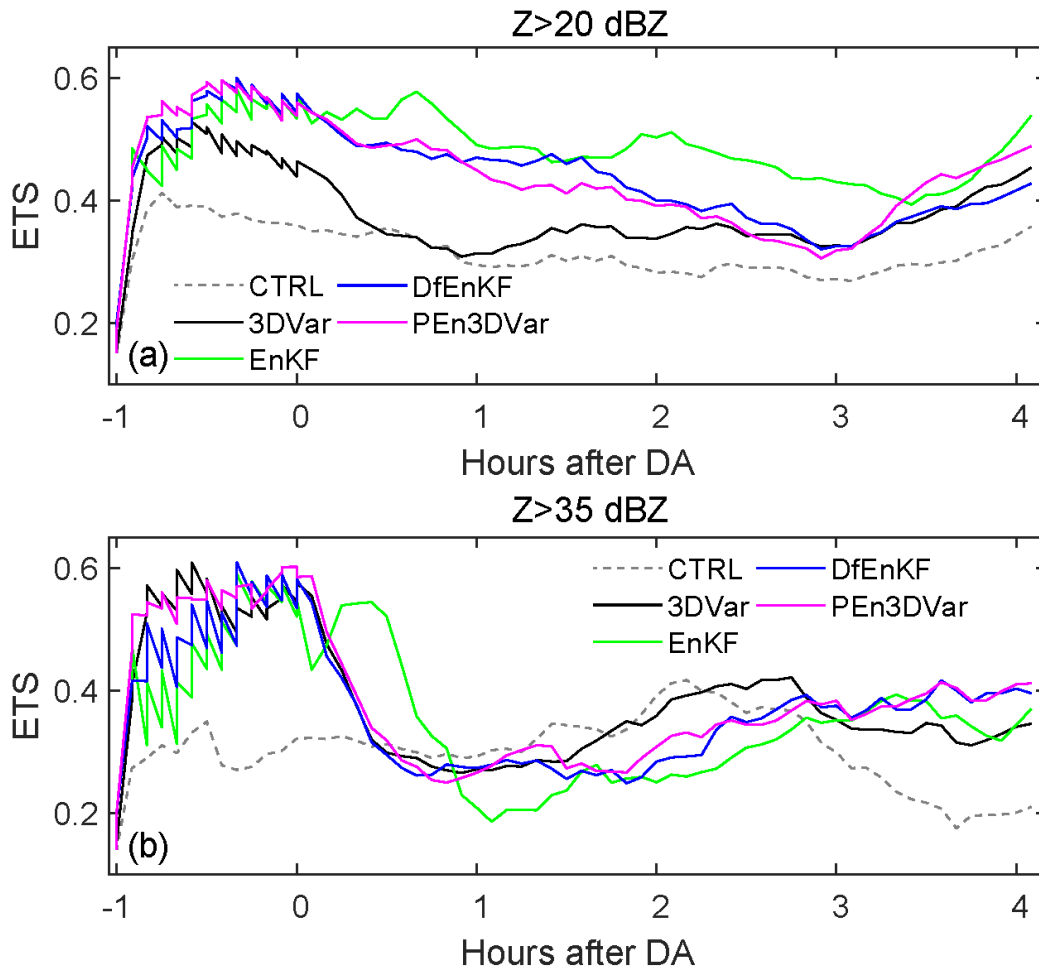
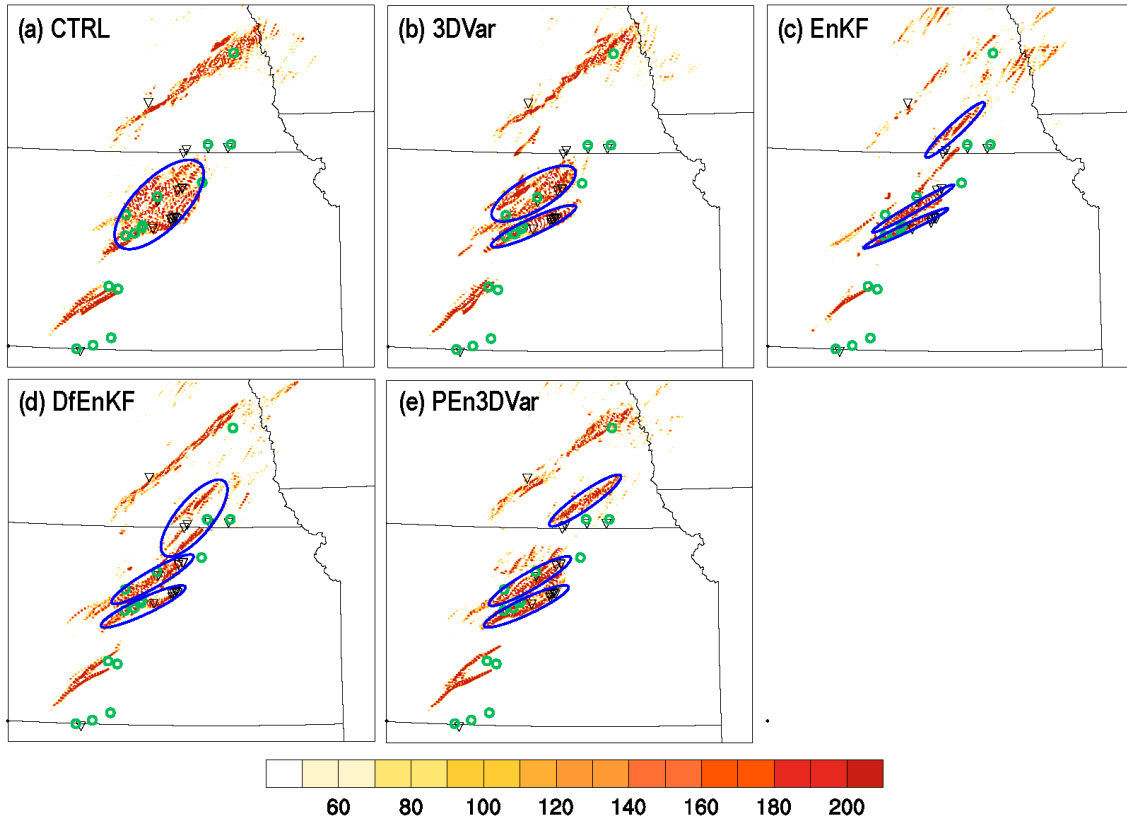


Fig. 8 5-km neighborhood ETSs of the supercell composite reflectivity analyses and forecasts verified against (a) 20 dBZ and (b) 35 dBZ within 1-h DA (corresponding to -1 to 0 h after DA) and 0 - 4 h composite reflectivity forecasts after DA for experiments CTRL, 3DVar, EnKF, DfEnKF, and PEn3DVar, respectively.

Updraft helicity (UH; Kain et al., 2008) is an integrated measure of updraft rotation in supercells, and UH swaths have been shown to be a good proxy for tornado track forecasting (Clark et al., 2012). To evaluate how well different DA experiments predict rotating updrafts and tornado potential, the accumulated swaths of the 2 – 5 km UH from the 0-2 forecasts of the velocity fields are compared with the locations of official Storm Prediction Center (SPC) tornado and hail reports. As can be seen in Fig. 9, EnKF, DfEnKF, and pure En3DVar perform overall similarly and outperform both CTRL and 3DVar in terms of capturing the three different high UH swaths in southern Nebraska and north central Kansas that are consistent with the tracks of tornado and hail reports. The ensemble-based DA methods (EnKF/DfEnKF or En3DVar) all help improve the forecast location of rotating updrafts, and thus are able to provide more accurate prediction of potential severe weather threats for this case.

501



502

503 Fig. 9 The 0 - 2 h forecasted 2-5 km updraft helicity ( $\text{m}^2 \text{s}^{-2}$ ) for the supercell case from (a)  
 504 CTRL, (b) 3DVar, (c) EnKF, (d) DfEnKf, and (e) PEn3DVar, respectively, overlaid with  
 505 tornado reports (inverted triangle) and hail reports (green circles) during the same time  
 506 period.  
 507

## 508 5. Summary and Conclusions

509 In this study, capability was developed to assimilate GOES-R GLM data within the  
 510 GSI hybrid ensemble-variational (EnVar) system for convection-allowing NWP. Real  
 511 GOES-R GLM FED data are assimilated into convection-resolving WRF model for a  
 512 supercell storm case over the Great Plains of United States using the hybrid En3DVar  
 513 method, EnKF, as well as the DfEnKF and, 3DVar methods. The FED observation operator  
 514 based on graupel mass from Kong et al. (2020) is used for the assimilation. 1-min FED

rates are assimilated every 5 min for a 1-h period and 4-h deterministic forecasts are produced from the final analyses of each DA method.

DA experiments using EnKF, DfEnKF, 3DVar, and hybrid En3DVar are performed, and their performances are evaluated and compared against each other as well as against a control run (CTRL) that does not assimilate any data. Objective verifications employing neighborhood ETS are performed for simulated FED and reflectivity. The main findings from this evaluation are summarized as follows:

- Single point experiments are conducted and compared between DfEnKF and pure En3DVar at uses 100% ensemble covariance (PEn3DVar). Without applying vertical localization in both En3DVar and EnKF, the magnitudes and horizontal extents of the analysis increments of the hydrometeors of graupel, snow, and rainwater for PE3DVar are much larger than EnKF. The differences in the analysis increments are mainly caused by the localization and the horizontal/vertical integration of the graupel mass in the observation operator.
- The analyses after 1-h DA and the ensuing 4-h forecasts of FED in EnKF, DfEnKF, 3DVar, and PEn3DVar are compared with those of CTRL as well as GLM FED observations. All DA experiments generally capture the three discrete FED cores better than CTRL in the analyses. The high FED values in CTRL appear in more linear structure and lack discrete FED core structures as observed.
- The root-mean-square innovation (RMSI)s of FED analyses and forecasts within the 1-h DA window and the follow-on 1-4 h FED forecasts for CTRL, 3DVar, EnKF, DfEnKF, and PEn3DVar are compared. Overall, pure En3DVar that uses 100% ensemble covariance has similar performance as EnKF/DfEnKF. 3DVar has smaller RMSI than CTRL during DA, but increases quickly during the 1-h forecasts

539 after the DA. The lack of consistent updating of all state variables is believed to be  
540 the main reason.

- 541 • The 0 - 4 h forecasts of composite reflectivity fields from different experiments are  
542 verified against WSR-88D composite reflectivity. Overall, all DA experiments  
543 produce higher ETSs than CTRL; EnKF produces slightly higher ETSs than  
544 DfEnKF and PEn3DVar and both are much larger than for 3DVar for the threshold  
545 of 20 dBZ.
- 546 • The 0-2 h accumulated swaths of 2 – 5 km UH in the supercell DA experiments are  
547 compared with SPC tornado reports. EnKF, DfEnKF, and PEn3DVar all perform  
548 similarly and outperform both CTRL and 3DVar in terms of capturing the three  
549 high UH swaths in central Kansas matching the observed tornado tracks.

550 In summary, the experiments that assimilate FED data using EnKF, 3DVar, and  
551 En3DVar are all better at capturing the intensity and distribution of storms in the analyses  
552 and forecasts in terms of FED, reflectivity, and updraft helicity relative to CTRL that does  
553 not assimilate FED data. Overall, PEn3DVar produces comparable results as EnKF,  
554 whereas 3DVar performs the worst among all DA methods tested. This suggests that the  
555 flow-dependent cross-variable correlations used in ensemble-based DA experiments  
556 (EnKF, En3DVar) play an important role in generating physically consistent analyses of  
557 unobserved state variables, leading to improved forecasts.

558 Despite encouraging results obtained thus far within the operational GSI DA  
559 framework, more systematic testing and evaluations are warranted with more cases. The  
560 current operators assumed a linear relationship between FED and graupel mass or graupel  
561 volume and the operators were originally derived based on simulation data sets. The  
562 relationship between total flash rate and graupel mass is not necessarily linear (e.g., Fig.

5a in Allen et al., 2016), and there may be large variability in the graupel mass scaling coefficient across different convective regimes. Kong et al. (2022) recently developed a new nonlinear operator for the GLM FED observations, which can be tested and compared with the old operator using variational DA methods in future work. Furthermore, the GLM FED data would eventually need to be assimilated in conjunction with other operationally available data, such as radar and GOES-R ABI radiance data. The sensitivity of data impact to microphysics parameterization scheme should also be investigated as it directly affects thunderstorm prediction. In addition, the new DA methods can also be implemented in Joint Effort for DA Integration (JEDI, which is an innovative, next-generation U.S. DA system) and tested with the target Rapid Refresh Forecast System (RRFS, the next-generation U.S. ensemble weather forecast system) configurations. It is hoped that after more intensive testing, the capabilities can be transitioned into operations in the near future.

#### *Acknowledgments.*

This work was primarily supported by NOAA JTTI grant #NA21OAR4590165 and NOAA GOES-R Program funding via grant #NA16OAR4320115. Auxiliary funding was also provided by NOAA/Office of Oceanic and Atmospheric Research under NOAA-University of Oklahoma Cooperative Agreement #NA11OAR4320072, U.S. Department of Commerce. This work was further supported by the National Oceanic and Atmospheric Administration (NOAA) of the U.S. Department of Commerce via grant #NA18NWS4680063. The DA experiments were conducted on the NSF XSEDE supercomputing facility at Texas Advanced Computing Center. Auxiliary computer resources were provided by the Oklahoma Supercomputing Center for Education and Research (OSCER) hosted at the University of Oklahoma.

- Allen, B. J., E. R. Mansell, D. C. Dowell, and W. Deierling, 2016: Assimilation of Pseudo-GLM Data Using the Ensemble Kalman Filter. *Mon. Wea. Rev.*, **144**, 3465-3486.
- Anderson, J. L., and N. Collins, 2007: Scalable implementations of ensemble filter algorithms for data assimilation. *J. Atm. Ocean. Tech.*, **24**, 1452-1463.
- Apodaca, K., M. Zupanski, M. DeMaria, J. A. Knaff, and L. D. Grasso, 2014: Development of a hybrid variational-ensemble data assimilation technique for observed lightning tested in a mesoscale model. *Nonlinear Proc Geoph.*, **21**, 1027-1041.
- Benjamin, S. G., and Coauthors, 2016: A North American Hourly Assimilation and Model Forecast Cycle: The Rapid Refresh. *Mon. Wea. Rev.*, **144**, 1669-1694.
- Bruning, E. C., and Coauthors, 2019: Meteorological Imagery for the Geostationary Lightning Mapper. *J. Geophys. Res. Atmos.*, **124**, 14285-14309.
- Buehner, M., P. L. Houtekamer, C. Charette, H. L. Mitchell, and B. He, 2010: Intercomparison of Variational Data Assimilation and the Ensemble Kalman Filter for Global Deterministic NWP. Part II: One-Month Experiments with Real Observations. *Mon. Wea. Rev.*, **138**, 1567-1586.
- Carey, L. D., N. Curtis, S. M. Stough, C. J. Schultz, and P. M., 2019: A Radar Investigation of Storm Morphology and Precipitation Processes during Discrepancies between GOES-16 GLM and LMA Observed Lightning Flash Rates and Jumps. 15<sup>th</sup> Annual Symposium on New Generation Operational Environmental Satellite Systems, 6-10 Jan. *Bull. Amer. Meteor. Soc.*, Phoenix, AZ.
- Clark, A. J., J. S. Kain, P. T. Marsh, J. Correia Jr., M. Xue, and F. Kong, 2012: Forecasting tornado pathlengths using a three-dimensional object identification algorithm applied to convection-allowing forecasts. *Wea. Forecasting*, **27**, 1090-1113.
- Doviak, R. J., V. Bringi, A. Ryzhkov, A. Zahrai, and D. Zrnic, 2000: Considerations for polarimetric upgrades to operational WSR-88D radars. *J. Atm. Ocean. Tech.*, **17**, 257-278.
- Etherton, B. J., and C. H. Bishop, 2004: Resilience of hybrid ensemble/3DVAR analysis schemes to model error and ensemble covariance error. *Mon. Wea. Rev.*, **132**, 1065-1080.
- Evensen, G., 1994: Sequential Data Assimilation with a Nonlinear Quasi-Geostrophic Model Using Monte-Carlo Methods to Forecast Error Statistics. *J. Geophys. Res-Oceans.*, **99**, 10143-10162.
- Fierro, A. O., E. R. Mansell, C. L. Ziegler, and D. R. MacGorman, 2012: Application of a Lightning Data Assimilation Technique in the WRF-ARW Model at Cloud-Resolving Scales for the Tornado Outbreak of 24 May 2011. *Mon. Wea. Rev.*, **140**, 2609-2627.
- Fierro, A. O., Y. Wang, J. Gao, and E. R. Mansell, 2019: Variational Assimilation of Radar Data and GLM Lightning-Derived Water Vapor for the Short-Term Forecasts of High-Impact Convective Events. *Mon. Wea. Rev.*, **147**, 4045-4069.
- Fierro, A. O., A. J. Clark, E. R. Mansell, D. R. MacGorman, S. R. Dembek, and C. L. Ziegler, 2015: Impact of Storm-Scale Lightning Data Assimilation on WRF-ARW Precipitation Forecasts during the 2013 Warm Season over the Contiguous United States. *Mon. Wea. Rev.*, **143**, 757-777.
- Fierro, A. O., J. Gao, C. L. Ziegler, K. M. Calhoun, E. R. Mansell, and D. R. MacGorman, 2016: Assimilation of Flash Extent Data in the Variational Framework at



- Convection-Allowing Scales: Proof-of-Concept and Evaluation for the Short-Term Forecast of the 24 May 2011 Tornado Outbreak. *Mon. Wea. Rev.*, **144**, 4373-4393.
- Gao, J., C. Fu, J. Kain, and D. J. Stensurd, 2016: OSSE experiments for an ensemble of 3DVAR data assimilation system with radar data for convective storms. *J. Atmos. Sci.*, **73**, 2403-2426.
- Goodman, S. J., and Coauthors, 2013: The GOES-R Geostationary Lightning Mapper (GLM). *Atmos. Res.*, **125**, 34-49.
- Hamill, T. M., and C. Snyder, 2000: A hybrid ensemble Kalman filter-3D variational analysis scheme. *Mon. Wea. Rev.*, **128**, 2905-2919.
- Hamill, T. M., J. S. Whitaker, D. T. Kleist, M. Fiorino, and S. G. Benjamin, 2011: Predictions of 2010's Tropical Cyclones Using the GFS and Ensemble-Based Data Assimilation Methods. *Mon. Wea. Rev.*, **139**, 3243-3247.
- Hu, J., A. O. Fierro, Y. Wang, J. Gao, and E. R. Mansell, 2020: Exploring the assimilation of GLM derived water vapor mass in a cycled 3DVAR framework for the short-term forecasts of high impact convective events. *Mon. Wea. Rev.*, **148**, 1005-1028.
- Hu, M., S. G. Benjamin, T. T. Ladwig, D. C. Dowell, S. S. Weygandt, C. R. Alexander, and J. S. Whitaker, 2017: GSI Three-Dimensional Ensemble-Variational Hybrid Data Assimilation Using a Global Ensemble for the Regional Rapid Refresh Model. *Mon. Wea. Rev.*, **145**, 4205-4225.
- Johnson, A., and Coauthors, 2014: Multiscale Characteristics and Evolution of Perturbations for Warm Season Convection-Allowing Precipitation Forecasts: Dependence on Background Flow and Method of Perturbation. *Mon. Wea. Rev.*, **142**, 1053-1073.
- Kain, J. S., and Coauthors, 2008: Some Practical Considerations Regarding Horizontal Resolution in the First Generation of Operational Convection-Allowing NWP. *Wea. Forecasting*, **23**, 931-952.
- Kleist, D. T., and K. Ide, 2015: An OSSE-Based Evaluation of Hybrid Variational-Ensemble Data Assimilation for the NCEP GFS. Part II: 4DEnVar and Hybrid Variants. *Mon. Wea. Rev.*, **143**, 452-470.
- Kleist, D. T., D. F. Parrish, J. C. Derber, R. Treadon, W. Wu, and S. Lord, 2009a: Introduction of the GSI into the NCEP Global Data Assimilation System. *Wea. Forecasting*, **24**, 1691-1705.
- Kleist, D. T., D. F. Parrish, J. C. Derber, R. Treadon, R. M. Errico, and R. H. Yang, 2009b: Improving Incremental Balance in the GSI 3DVAR Analysis System. *Mon. Wea. Rev.*, **137**, 1046-1060.
- Kong, R., M. Xue, and C. Liu, 2018: Development of a Hybrid En3DVar Data Assimilation System and Comparisons with 3DVar and EnKF for Radar Data Assimilation with Observing System Simulation Experiments. *Mon. Wea. Rev.*, **146**, 175-198.
- Kong, R., M. Xue, A. O. Fierro, Y. S. Jung, C. S. Liu, E. R. Mansell, and D. R. MacGorman, 2020: Assimilation of GOES-R Geostationary Lightning Mapper Flash Extent Density Data in GSI EnKF for the Analysis and Short-Term Forecast of a Mesoscale Convective System. *Mon. Wea. Rev.*, **148**, 2111-2133.
- Kotsuki, S., Y. Ota, and T. Miyoshi, 2017: Adaptive covariance relaxation methods for ensemble data assimilation: experiments in the real atmosphere. *Quart. J. Roy. Met. Soc.*, **143**, 2001-2015.
- Liu, C., and M. Xue, 2016: Relationships among Four-Dimensional Hybrid Ensemble-Variational Data Assimilation Algorithms with Full and Approximate Ensemble Covariance Localization. *Mon. Wea. Rev.*, **144**, 591-606.

- Liu, C., M. Xue, and R. Kong, 2019: Direct Assimilation of Radar Reflectivity Data Using 3DVAR: Treatment of Hydrometeor Background Errors and OSSE Tests. *Mon. Wea. Rev.*, **147**, 17-29.
- Lojou, J.-Y., and K. Cummins, 2005: On the representation of two- and three-dimensional total lightning information. *85<sup>th</sup> AMS Annual Meeting*.
- Lorenc, A. C., 2003: The potential of the ensemble Kalman filter for NWP - a comparison with 4D-Var. *Quart. J. Roy. Met. Soc.*, **129**, 3183-3203.
- Lu, X., X. G. Wang, Y. Z. Li, M. J. Tong, and X. L. Ma, 2017: GSI-based ensemble-variational hybrid data assimilation for HWRF for hurricane initialization and prediction: impact of various error covariances for airborne radar observation assimilation. *Quart. J. Roy. Met. Soc.*, **143**, 223-239.
- MacGorman, D. R., and Coauthors, 2008: TELEX The Thunderstorm Electrification and Lightning Experiment. *Bull. Amer. Meteor. Soc.*, **89**, 997-1013.
- Maldonado, P., J. Ruiz, and C. Saulo, 2020: Parameter Sensitivity of the WRF-LETKF System for Assimilation of Radar Observations: Imperfect-Model Observing System Simulation Experiments. *Wea. Forecasting*, **35**, 1345-1362.
- Mansell, E. R., 2014: Storm-Scale Ensemble Kalman Filter Assimilation of Total Lightning Flash-Extent Data. *Mon. Wea. Rev.*, **142**, 3683-3695.
- Mansell, E. R., D. R. MacGorman, C. L. Ziegler, and J. M. Straka, 2002: Simulated three-dimensional branched lightning in a numerical thunderstorm model. *J. Geophys. Res. Atmos.*, **107**.
- Mansell, E. R., D. R. MacGorman, C. L. Ziegler, and J. M. Straka, 2005: Charge structure and lightning sensitivity in a simulated multicell thunderstorm. *J. Geophys. Res. Atmos.*, **110**.
- Marchand, M. R., and H. E. Fuelberg, 2014: Assimilation of Lightning Data Using a Nudging Method Involving Low-Level Warming. *Mon. Wea. Rev.*, **142**, 4850-4871.
- Mason, I. B., 2003: Binary events. *Forecast Verification-A Practitioner's Guide in Atmospheric Science*, 37-76.
- Pan, Y., M. Xue, K. Zhu, and M. Wang, 2018: A prototype regional GSI-based EnKF-variational hybrid data assimilation system for the Rapid Refresh forecasting system: Dual-resolution implementation and testing results. *Adv. Atmos. Sci.*, **35**, 518-530.
- Pan, Y., and Coauthors, 2014: A GSI-Based Coupled EnSRF-En3DVar Hybrid Data Assimilation System for the Operational Rapid Refresh Model: Tests at a Reduced Resolution. *Mon. Wea. Rev.*, **142**, 3756-3780.
- Pu, Z. X., S. X. Zhang, M. J. Tong, and V. Tallapragada, 2016: Influence of the Self-Consistent Regional Ensemble Background Error Covariance on Hurricane Inner-Core Data Assimilation with the GSI-Based Hybrid System for HWRF. *J. Atmos. Sci.*, **73**, 4911-4925.
- Qie, X. S., R. P. Zhu, T. Yuan, X. K. Wu, W. L. Li, and D. X. Liu, 2014: Application of total-lightning data assimilation in a mesoscale convective system based on the WRF model. *Atmos. Res.*, **145**, 255-266.
- Rison, W., R. J. Thomas, P. R. Krehbiel, T. Hamlin, and J. Harlin, 1999: A GPS-based three-dimensional lightning mapping system: Initial observations in central New Mexico. *Geophys. Res. Lett.*, **26**, 3573-3576.

- Skamarock, W. C., and Coauthors, 2008: A DESCRIPTION OF THE ADVANCED RESEARCH WRF VERSION 3. *NCAR Technical Note NCAR/TN-475+STR*, doi:10.5065/D68S4MVH.
- Snook, N., M. Xue, and Y. Jung, 2012: Ensemble Probabilistic Forecasts of a Tornadic Mesoscale Convective System from Ensemble Kalman Filter Analyses Using WSR-88D and CASA Radar Data. *Mon. Wea. Rev.*, **140**, 2126-2146.
- Sobash, R. A., G. S. Romine, C. S. Schwartz, D. J. Gagne, and M. L. Weisman, 2016: Explicit Forecasts of Low-Level Rotation from Convection-Allowing Models for Next-Day Tornado Prediction. *Wea. Forecasting*, **31**, 1591-1614.
- Thompson, G., P. R. Field, R. M. Rasmussen, and W. D. Hall, 2008: Explicit Forecasts of Winter Precipitation Using an Improved Bulk Microphysics Scheme. Part II: Implementation of a New Snow Parameterization. *Mon. Wea. Rev.*, **136**, 5095-5115.
- Tong, M., and M. Xue, 2008: Simultaneous estimation of microphysical parameters and atmospheric state with simulated radar data and ensemble square root Kalman filter. Part I: Sensitivity analysis and parameter identifiability. *Mon. Wea. Rev.*, **136**, 1630-1648.
- Wang, Y., J. Gao, P. S. Skinner, K. Knopfmeier, T. Jones, P. L. Heiselman, and L. J. Wicker, 2018: Test of a weather-adaptive dual-resolution Hybrid 3DEnVAR and WRF-DART analysis and forecast system for severe weather events. *22<sup>nd</sup> Conf. on Integrated Observing and Assimilation Systems for the Atmosphere, Ocean, and Land Surface (IOAS-AOLS)*, Austin, TX, Amer. Meteor. Soc., 168, <https://ams.confex.com/ams/198Annual/webprogram/Paper330920.html>.
- Whitaker, J. S., and T. M. Hamill, 2002: Ensemble data assimilation without perturbed observations. *Mon. Wea. Rev.*, **130**, 1913-1924.
- Whitaker, J. S., and T. M. Hamill, 2012: Evaluating Methods to Account for System Errors in Ensemble Data Assimilation. *Mon. Wea. Rev.*, **140**, 3078-3089.
- Wu, W., D. F. Parrish, E. Rogers, and Y. Lin, 2017: Regional Ensemble-Variational Data Assimilation Using Global Ensemble Forecasts. *Wea. Forecasting*, **32**, 83-96.
- Xiao, X., J. Sun, X. Qie, Z. Ying, L. Ji, M. Chen, and L. Zhang, 2021: Lightning Data Assimilation Scheme in a 4DVAR System and Its Impact on Very Short-Term Convective Forecasting. *Mon. Wea. Rev.*, **149**, 353-373.