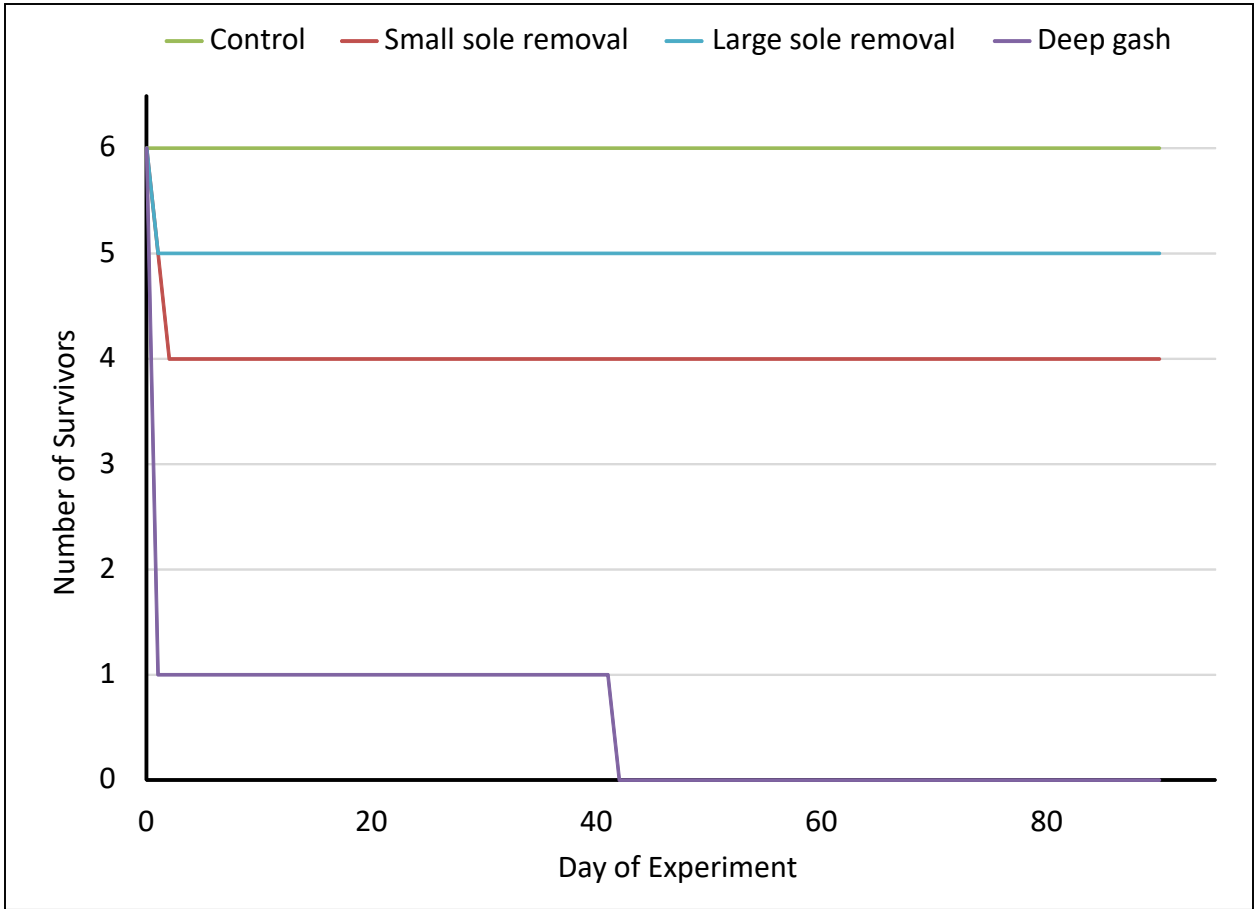
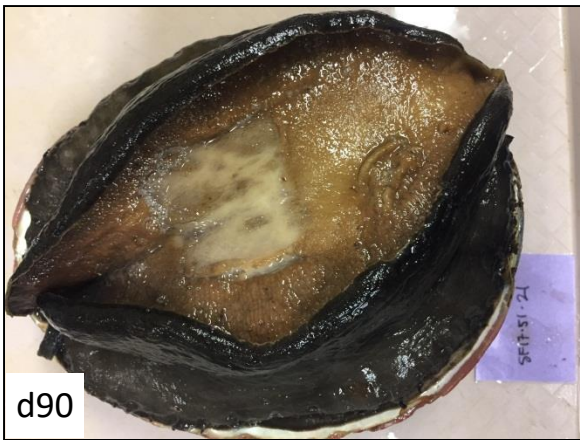
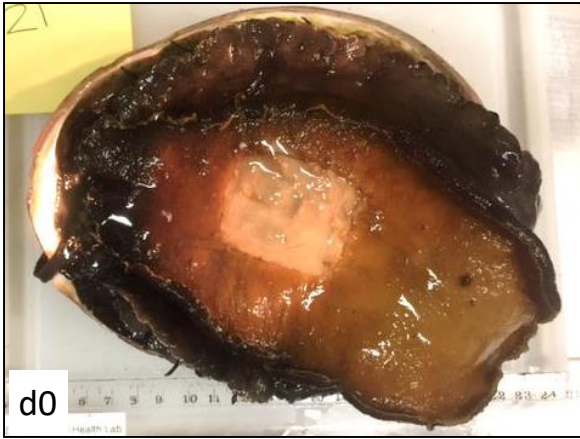


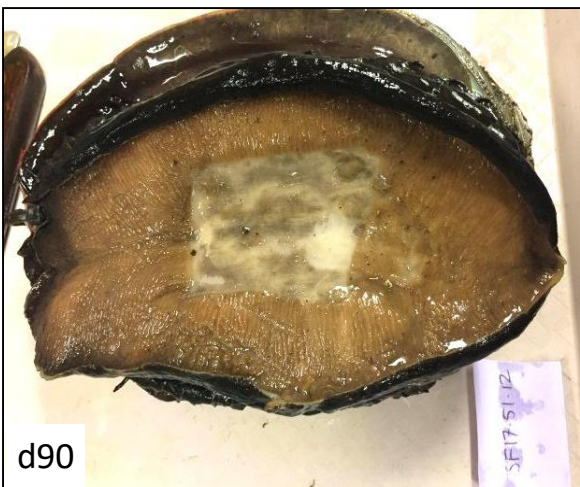
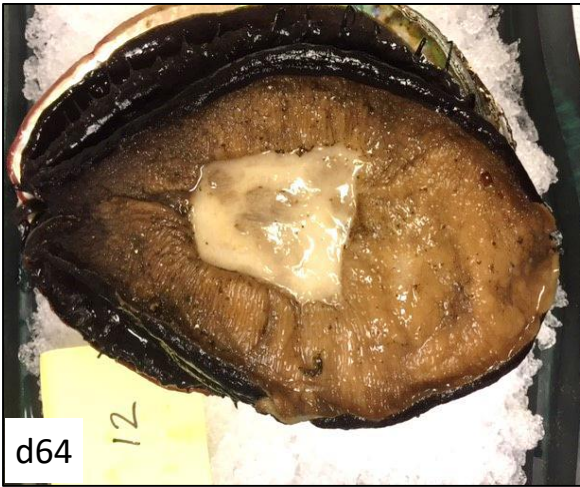
Figure 2. Gaussian band fitting of the differential spectra of examined water sources recorded at selected reaction time. Standard humic substance: Suwannee River fulvic acid (a); River water: Alento River water (b); Lake or Reservoir water: Lake

Washington (c) and the protected Mopanshan Reservoir (d); Groundwater:  
Groundwater from Henan (e); Seawater: Coastal seawater (f).







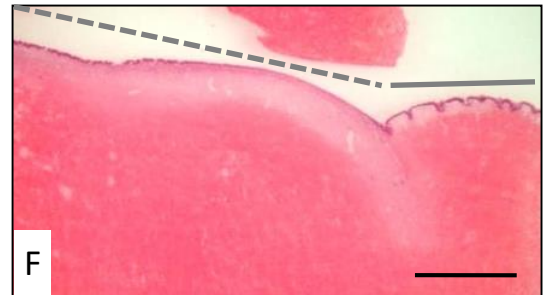
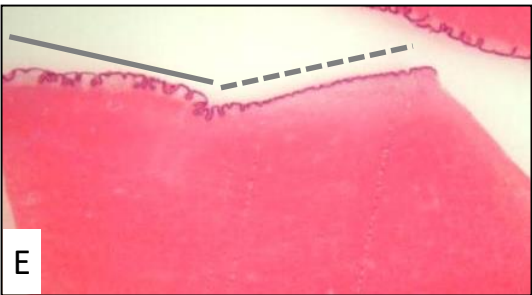
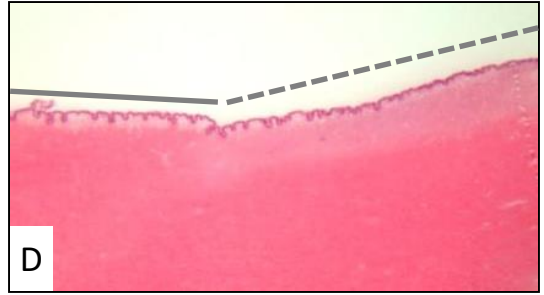
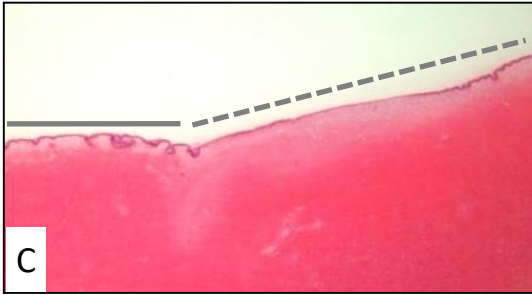
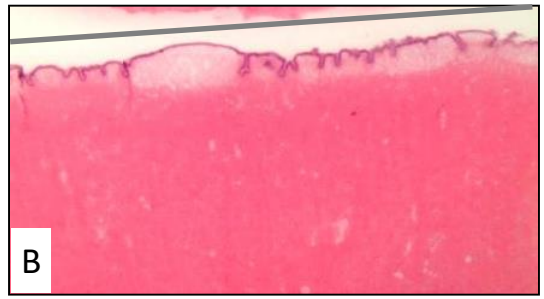
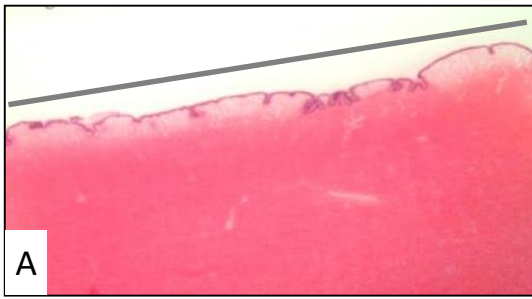




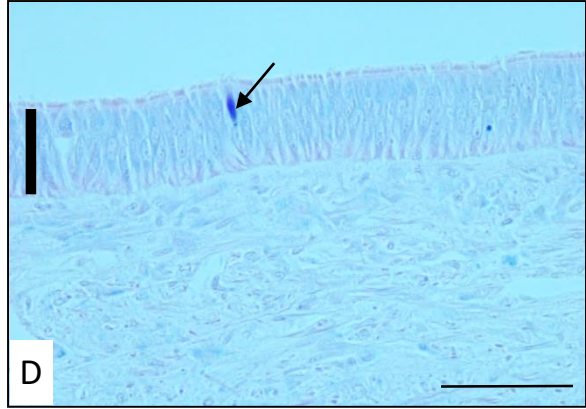
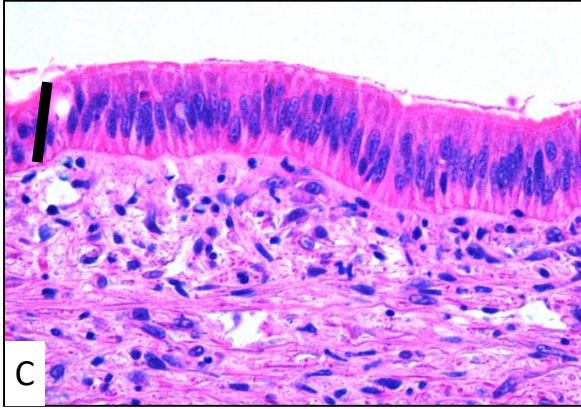
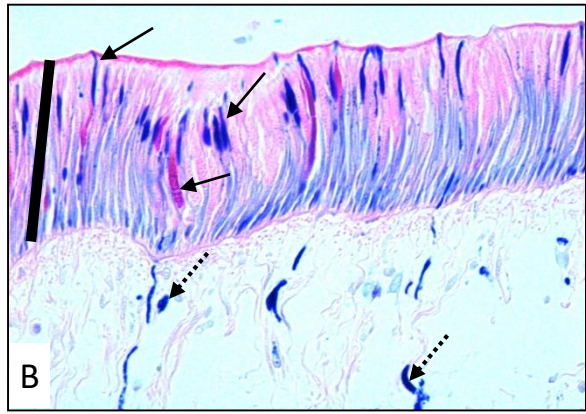
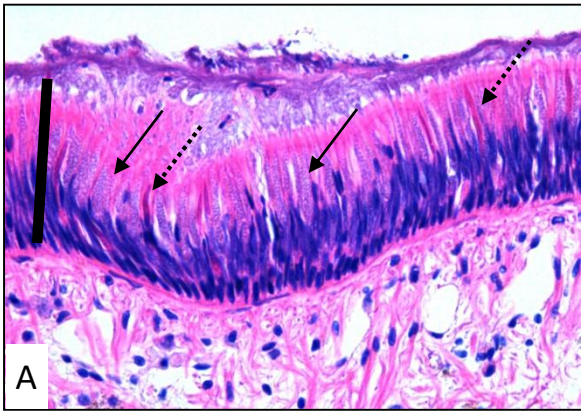
d0



d1







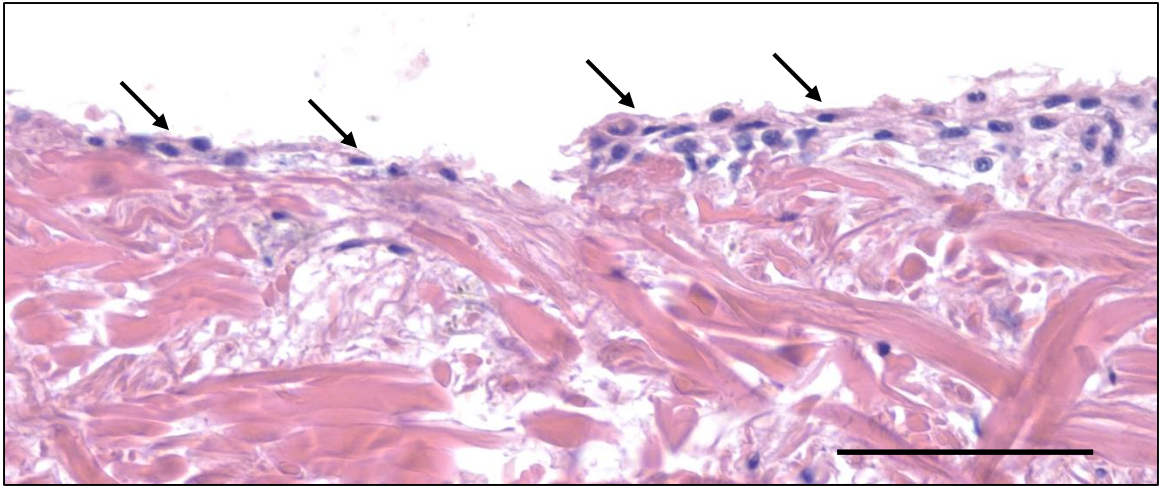


Table 1. Survival and final:initial weight ratios for survivors and animals that died in each treatment.

Injury Type	N	# Survivors (Day 90)	Survivors:	Mortalities:
			Final/ Initial Weight (%±sem)	Final/ Initial Weight (%±sem)
Control	6	6	100±2	-
Small Foot Sole Removal	6	4	92±6	73±5
Large Foot Sole Removal	6	5	94±5	73
Deep Foot Gash	6	0	-	75±1