

Supporting Information for “Air-sea heat fluxes associated with convective cold pools”

Samantha M. Wills^{1,2}, Meghan F. Cronin², and Dongxiao Zhang^{1,2}

¹Cooperative Institute for Climate, Ocean, and Ecosystem Studies, University of Washington, Seattle, WA, USA

²Pacific Marine Environmental Laboratory, NOAA, Seattle, WA, USA

Contents of this file

1. Figure S1

Introduction The supplemental figure (Fig. S1, formatted as EPS file) included in this document is a reproduction of Fig. 6a-c from the article, but shown with the hourly 10-m wind field from the 0.5° NCEP Climate Forecast System version 2 (CFSv2) hourly time series analysis (Saha & Coauthors, 2014; Saha et al., 2011).

References

- Saha, S., & Coauthors. (2014). The ncep climate forecast system version 2. *Journal of climate*, 27(6), 2185–2208.
- Saha, S., Moorthi, S., Wu, X., Wang, J., Nadiga, S., Tripp, P., et al. (2011). *Ncep climate forecast system version 2 (cfsv2) selected hourly time-series products*. Research Data Archive at the National Center for Atmospheric Research, Computational and Information Systems Laboratory. (Accessed on 1-Nov-2022) doi: 10.5065/D6N877VB

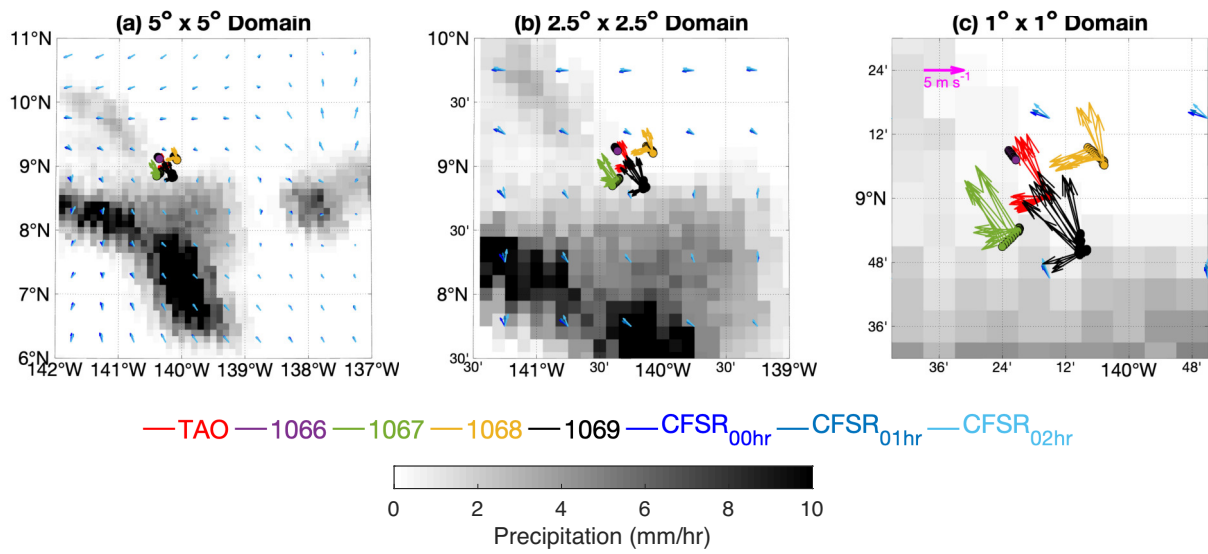


Figure S1. Same as in Fig. 6a-c, except for hourly 10-meter u,v winds (blue vector shades; m/s) valid 11/17/19 00:00 - 02:00 UTC from NCEP CFSv2 on a nominal 0.5° horizontal grid.