



# Florida Marine Debris Emergency Response Guide: Field Reference Guide

NOAA Marine Debris Program  
National Oceanic and Atmospheric Administration  
U.S. Department of Commerce  
December 2023

# Table of Contents

<b>1 Introduction</b> .....	<b>2</b>
1.1 Purpose.....	2
1.2 Scope of <i>Guide</i> .....	2
<b>2 Florida Marine Debris Response Flowchart</b> .....	<b>3</b>
<b>3 Organization Jurisdictions and Capabilities</b> .....	<b>5</b>
3.1 Florida Marine Debris Response Maps.....	5
3.2 Response Capabilities .....	10
<b>4 Permitting and Compliance Requirements in Florida</b> .....	<b>13</b>
<b>5 Contact Information</b> .....	<b>15</b>

## 1 Introduction

### 1.1 Purpose

This *Field Reference Guide* condenses information contained in the *Florida Marine Debris Emergency Response Guide: Comprehensive Guidance Document (Guide)* to facilitate use during emergency response operations. While the *Comprehensive Guidance Document* serves as a complete reference for marine debris response in Florida, the *Field Reference Guide* includes organization contacts and the most pertinent information for quick reference in the field and during times of crisis. Both documents and subsequent versions will be posted on the NOAA Marine Debris Program website at <https://marinedebris.noaa.gov/our-work/emergency-response>.

The purpose of these documents is to improve preparedness for response and recovery operations following a disaster that generates marine debris in Florida. The *Comprehensive Guidance Document* and complementary *Field Reference Guide* outline existing response structures at the local, state, and federal levels to facilitate a coordinated, well-managed, and immediate response to marine debris incidents impacting the state of Florida. Individual organization roles and responsibilities are presented in a consolidated one-page [flowchart](#) which functions as a decision tree for marine debris response. Organization jurisdictions are presented in state [maps](#), with a dynamic version available [online](#). Additionally, permitting and compliance requirements for marine debris removal have been synthesized in a one-page reference [handout](#).

### 1.2 Scope of Guide

The *Guide* addresses both natural and anthropogenic marine debris incidents affecting Florida’s coastline. In 33 U.S.C. § 1956(3), marine debris is defined as any persistent solid material that is manufactured or processed and directly or indirectly, intentionally or unintentionally, disposed of or abandoned into the marine environment or Great Lakes. Although vegetative debris is not included in the legal definition for marine debris, Florida stakeholders have identified it as a common debris stream of concern following natural disasters. Therefore, in this document, the term marine debris is used more generally and also includes vegetative material and debris that



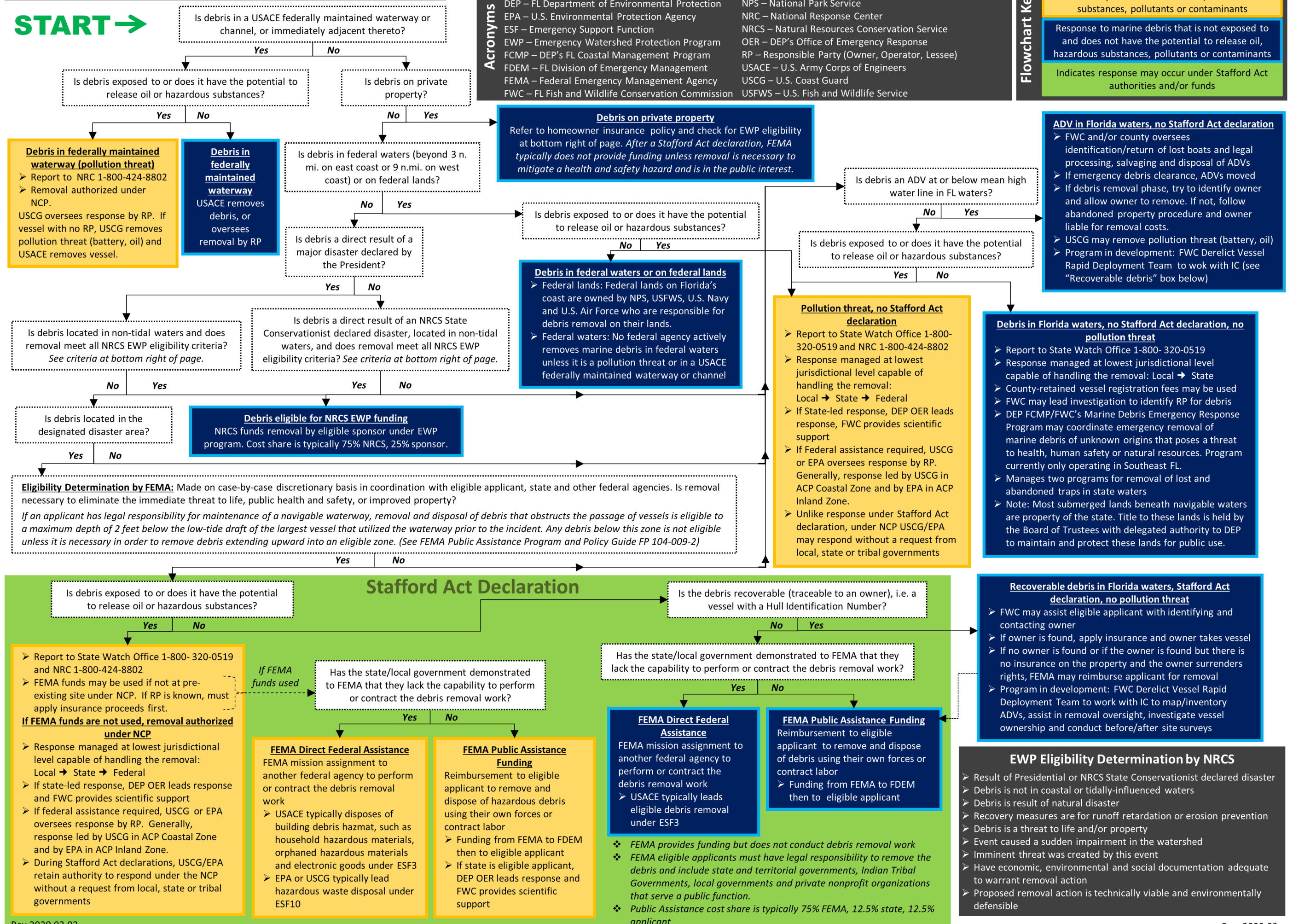
could be exposed to or release oil, hazardous substances, pollutants, or contaminants that enters a waterway following an acute incident and poses a threat to the natural or built environment. This also includes shoreline and wetland debris and debris in some inland, non-tidal waterways.

## **2 Florida Marine Debris Response Flowchart**

The “Florida Marine Debris Response Flowchart” on the following page provides a visual one-page representation of agency roles and responsibilities. The flowchart functions as a decision tree for marine debris response with color-coded endpoints. Yellow endpoints represent response to marine debris that is exposed to or has the potential to release oil, hazardous substances, pollutants, or contaminants. Blue endpoints represent response to marine debris that is not exposed to and does not have the potential to release oil, hazardous substances, pollutants, or contaminants. Endpoints within the green shaded area indicate that response may occur under Robert T. Stafford Disaster Relief and Emergency Assistance Act (Stafford Act) authorities and/or funding.

# Florida Marine Debris Response Flowchart

**START** →



**Acronyms**

- ACP – Area Contingency Plan
- ADV – Abandoned and Derelict Vessel
- DEP – FL Department of Environmental Protection
- EPA – U.S. Environmental Protection Agency
- ESF – Emergency Support Function
- EWP – Emergency Watershed Protection Program
- FCMP – DEP’s FL Coastal Management Program
- FDEM – FL Division of Emergency Management
- FEMA – Federal Emergency Management Agency
- FWC – FL Fish and Wildlife Conservation Commission
- IC – Incident Commander
- NCP – National Oil & Hazardous Substance Contingency Plan
- NPS – National Park Service
- NRC – National Response Center
- NRCS – Natural Resources Conservation Service
- OER – DEP’s Office of Emergency Response
- RP – Responsible Party (Owner, Operator, Lessee)
- USACE – U.S. Army Corps of Engineers
- USCG – U.S. Coast Guard
- USFWS – U.S. Fish and Wildlife Service

**Flowchart Key**

- Response to marine debris that is exposed to or has the potential to release oil, hazardous substances, pollutants or contaminants
- Response to marine debris that is not exposed to and does not have the potential to release oil, hazardous substances, pollutants or contaminants
- Indicates response may occur under Stafford Act authorities and/or funds

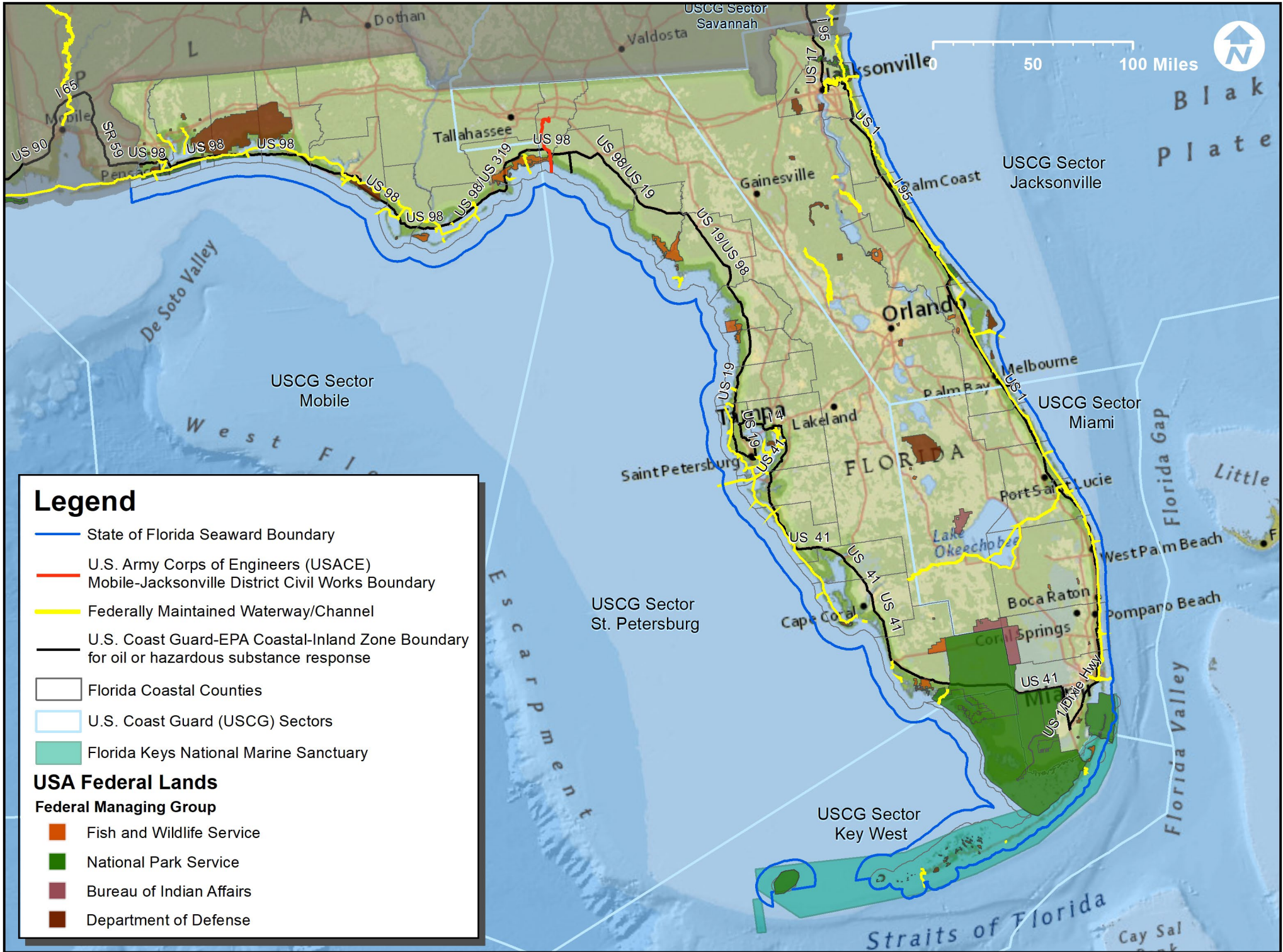
## 3 Organization Jurisdictions and Capabilities

### 3.1 Florida Marine Debris Response Maps

The “Florida Marine Debris Response Map” displays relevant agency jurisdiction boundaries. After a marine debris incident, the agency (or agencies) with jurisdiction and authority for removing debris will vary depending on where the debris is located. These regional maps include information that stakeholders identified as important in determining jurisdiction within the state. A dynamic version of the response map is also available [online](#) in the Environmental Response Management Application (ERMA).

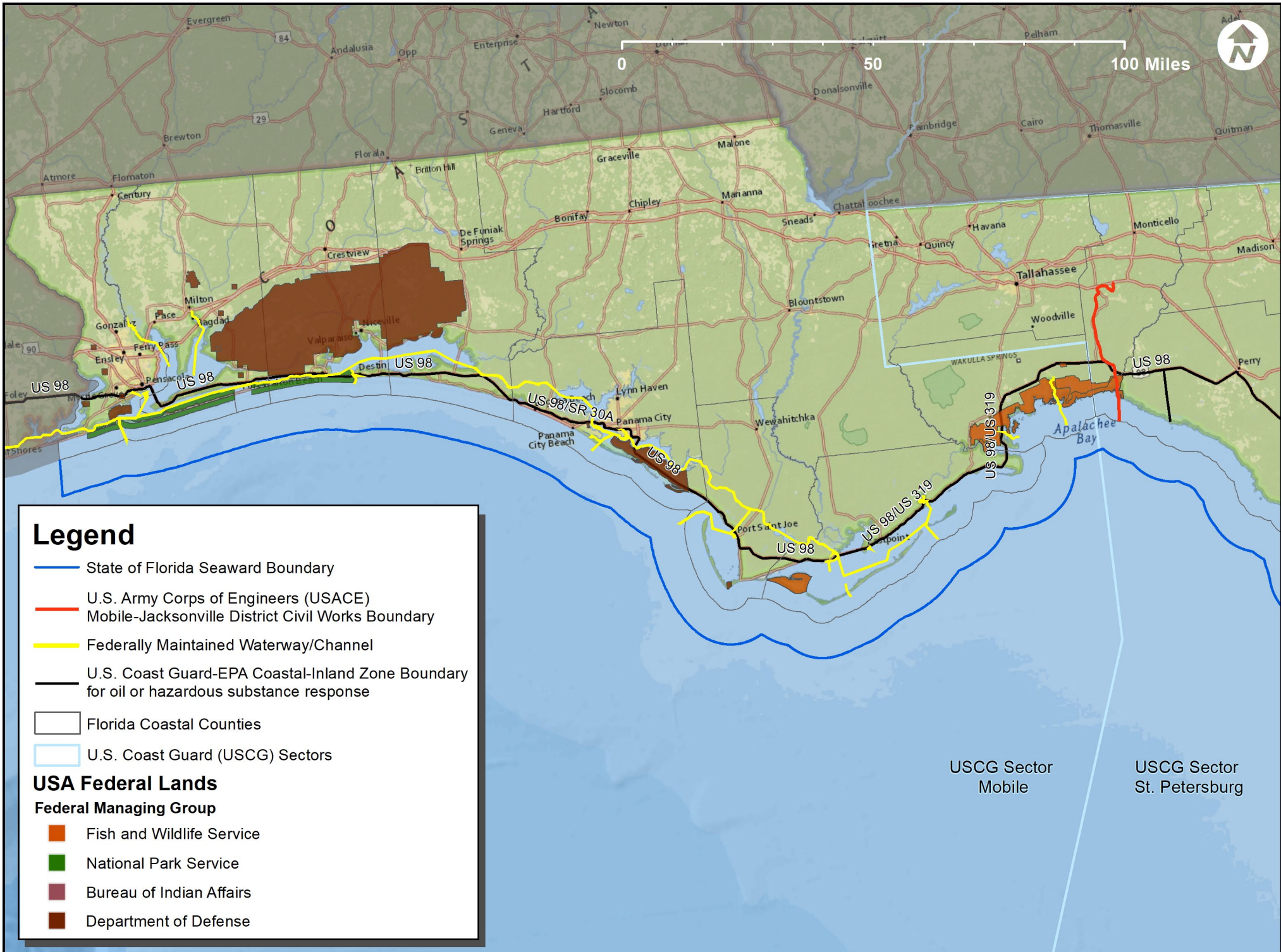


# Florida Marine Debris Response Map





# Florida Marine Debris Response Map



## Legend

- State of Florida Seaward Boundary
- U.S. Army Corps of Engineers (USACE) Mobile-Jacksonville District Civil Works Boundary
- Federally Maintained Waterway/Channel
- U.S. Coast Guard-EPA Coastal-Inland Zone Boundary for oil or hazardous substance response
- Florida Coastal Counties
- U.S. Coast Guard (USCG) Sectors

## USA Federal Lands

### Federal Managing Group

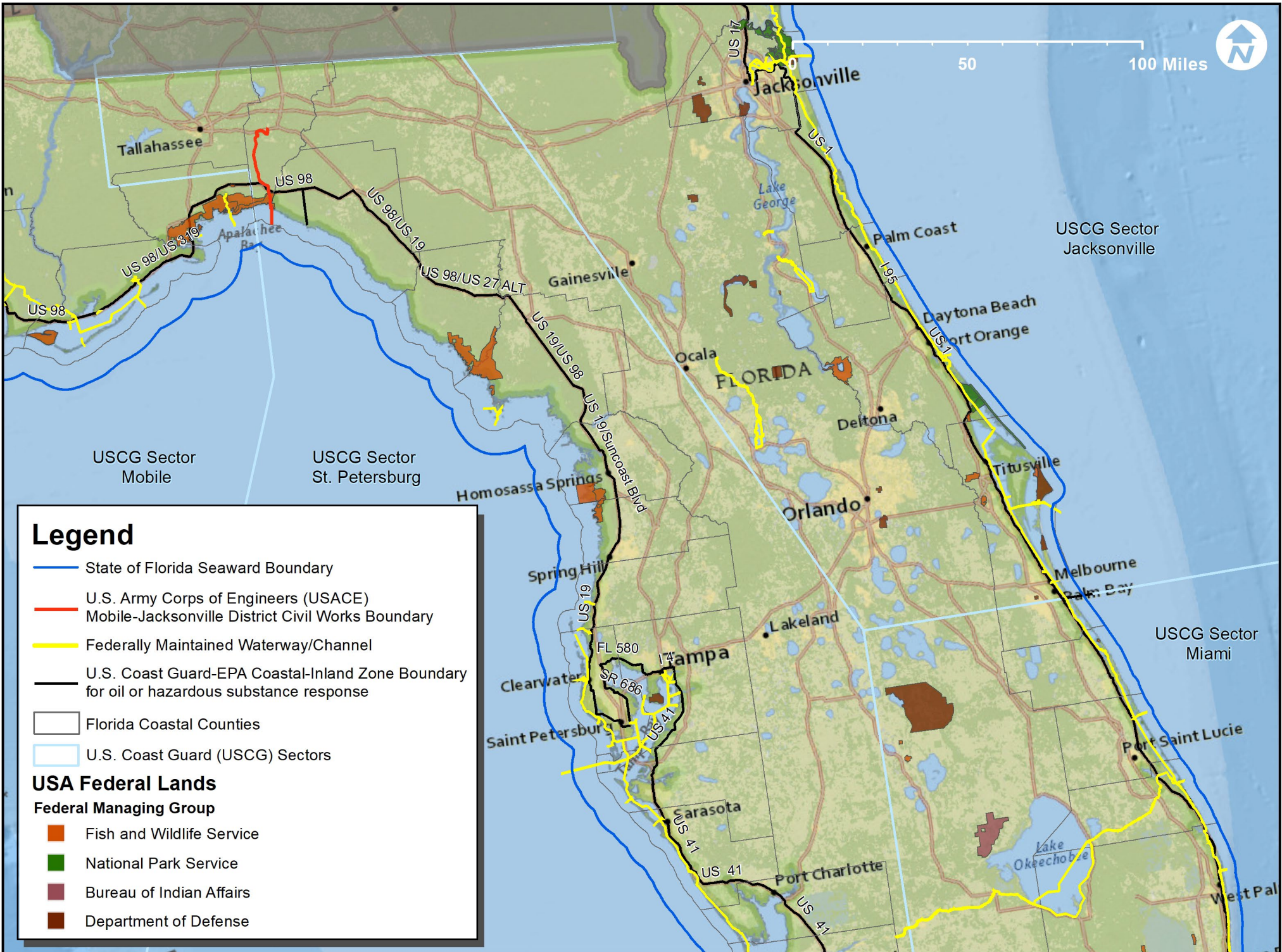
- Fish and Wildlife Service
- National Park Service
- Bureau of Indian Affairs
- Department of Defense

USCG Sector  
Mobile

USCG Sector  
St. Petersburg

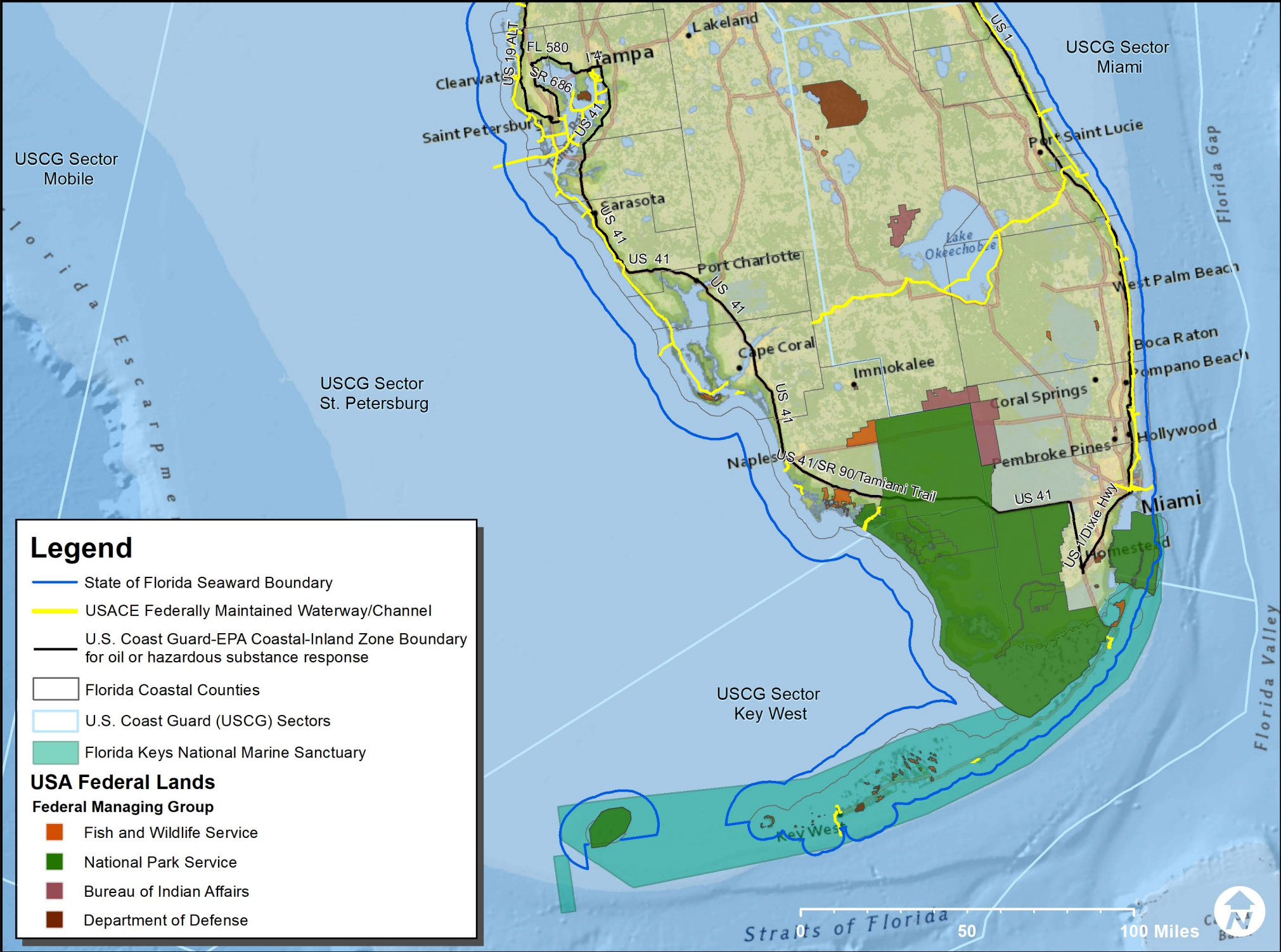


# Florida Marine Debris Response Map





# Florida Marine Debris Response Map



**Legend**

- State of Florida Seaward Boundary
- USACE Federally Maintained Waterway/Channel
- U.S. Coast Guard-EPA Coastal-Inland Zone Boundary for oil or hazardous substance response
- Florida Coastal Counties
- U.S. Coast Guard (USCG) Sectors
- Florida Keys National Marine Sanctuary

**USA Federal Lands**

**Federal Managing Group**

- Fish and Wildlife Service
- National Park Service
- Bureau of Indian Affairs
- Department of Defense

### 3.2 Response Capabilities

Yes - In-house Capability		DEP	FDEM <sup>5</sup>	FWC	BSEE <sup>12</sup>	FEMA Region IV <sup>13</sup>	NOAA	NRCS	USACE		USCG	U.S. EPA Region IV <sup>30</sup>	USFWS	
Contract (Cont) - Contracted Capability														
Technology	IT support during response (server/storage space for data and information sharing)	Yes <sup>1,2</sup>	-	Yes <sup>7</sup>	-	-	-	-	Cont <sup>17</sup>	Yes <sup>18</sup>	-	Yes	-	
	Multi-beam sonar	-	-	Contract <sup>7</sup>	-	-	Yes	-	Yes <sup>17</sup>	Cont <sup>18</sup>	-	Contract	-	
	Side scan sonar	-	-	Yes <sup>7,8</sup>	-	-	Yes	-	Yes <sup>17</sup>	Cont <sup>18</sup>	-	Contract	-	
	Single-beam sonar	-	-	Yes <sup>7,8</sup>	-	-	Yes	-	Yes <sup>17</sup>	Cont <sup>18</sup>	-	Contract	-	
	Remote sensing capabilities	-	-	Yes <sup>7,9</sup>	-	-	Yes	-	Yes <sup>17</sup>	Cont <sup>18</sup>	-	Contract	-	
Workforce/Expertise	Communication/public information expertise (dedicated spokesperson/Public Information Officer)	Yes <sup>2</sup>	Yes	Yes <sup>7,8</sup>	-	-	Yes <sup>14</sup>	-	Yes		-	Yes	-	
	Compliance and permitting expertise	Yes <sup>2,3</sup>	Yes	Yes <sup>8</sup>	-	Yes	Yes	Yes	Yes		-	Yes	Yes	
	Data/information management capabilities	Yes <sup>2</sup>	Yes	Yes <sup>7,8</sup>	-	-	Yes <sup>14</sup>	-	Yes <sup>18</sup>		-	Yes	-	
	Debris modeling expertise (transport, hindcasting, etc.)	-	-	Yes <sup>8</sup>	-	-	Yes	-	Yes <sup>18</sup>		-	Contract	-	
	Dedicated waterway/marine debris staff (responders, response team, regional coordination, etc.)	-	Yes <sup>6</sup>	-	-	-	Yes	-	Yes <sup>18</sup>		Yes	Yes	-	
	Dive support	Yes <sup>2</sup>	Cont <sup>3</sup>	-	Yes <sup>8</sup>	-	-	Yes	-	Contract <sup>17</sup>		Yes <sup>22</sup>	Contract	-
	Environmental expertise (location of sensitive areas, endangered species present, etc.)	Yes <sup>2,3</sup>	Yes	Yes <sup>7,8</sup>	Yes	Yes	Yes <sup>14,15</sup>	Yes	Yes		Yes	Yes	Yes	
	GIS mapping and plotting of imagery	Yes <sup>2</sup>	Yes	Yes <sup>7,8</sup>	-	Yes	Yes	-	Yes <sup>19</sup>		-	Yes	-	
	Hazardous substance and/or oiled debris expertise	Yes <sup>2,3</sup>	-	Yes <sup>7</sup>	-	-	Yes	-	Yes <sup>18</sup>		Yes	Yes	-	
	Incident Command System (ICS) trained staff	Yes <sup>2,3</sup>	Yes	Yes <sup>7,8</sup>	-	Yes	Yes	-	Yes		Yes	Yes	-	
	Technical expertise for removal operations (techniques, best management practices, etc.)	Yes <sup>3</sup>	-	-	-	Yes	Yes	Yes	Cont <sup>17</sup>	Yes <sup>18,20</sup>	Yes	Yes	-	
	Volunteer manpower	Yes <sup>2</sup>	Yes	Yes <sup>8</sup>	-	-	Yes <sup>14</sup>	-	-		-	Yes	Yes	
Waterway management authority (law enforcement officers)	-	-	Yes <sup>8</sup>	-	-	-	Contract <sup>14</sup>	-	-		Yes	-	-	
Equipment	Aircraft	-	-	Yes <sup>10</sup>	-	-	Yes	-	-		Yes	Contract	-	
	Barge, Self-loading barge	-	-	-	-	-	-	-	Yes <sup>17</sup>	Cont <sup>18</sup>	-	Contract	-	
	Boom	Contract <sup>3</sup>	-	-	-	-	-	-	Yes <sup>17</sup>	Cont <sup>18</sup>	Contract <sup>23</sup>	Contract	-	
	Crane, Knuckleboom crane	-	-	-	-	-	-	-	Yes <sup>17</sup>	Cont <sup>18</sup>	-	Contract	-	
	Environmental clamshell dredge	-	-	-	-	-	-	-	Contract		-	Contract	-	
	Excavator	Contract <sup>3</sup>	-	-	-	-	-	-	Yes <sup>17</sup>	Cont <sup>18</sup>	-	Contract	-	
	Remotely Operated Vehicle (ROV)	-	-	-	-	-	-	-	Yes		-	Contract	-	
	Sampling equipment	Yes <sup>2,3</sup>	-	Yes <sup>7,8</sup>	-	-	-	-	Contract <sup>18</sup>		-	Yes	-	
	Unmanned Aerial Vehicle (UAV)/Surveillance drones	-	-	-	-	-	Yes	-	Yes		Yes <sup>24</sup>	Contract	-	
	Vessels	Yes <sup>2</sup>	Cont <sup>3</sup>	-	Yes <sup>7,8</sup>	-	-	Yes	Yes <sup>17</sup>	Cont <sup>18</sup>	Yes	Contract	Yes	
	Other specialized equipment that cannot be readily procured immediately following a debris incident	-	-	Yes <sup>7,11</sup>	-	-	Yes <sup>14</sup>	-	Contract <sup>18</sup>		Yes	Contract	Yes	



Yes - In-house Capability		DEP	FDEM <sup>5</sup>	FWC	BSEE <sup>12</sup>	FEMA Region IV <sup>13</sup>	NOAA	NRCS	USACE	USCG	U.S. EPA Region IV <sup>30</sup>	USFWS
Contract (Cont) - Contracted Capability												
Logistics	Contracting: Contract authority and oversight capabilities	Yes <sup>3</sup>	Yes	Yes <sup>7</sup>	-	-	Yes	-	Cont <sup>17</sup> Yes <sup>18</sup>	Yes <sup>25</sup>	Yes	-
	Contracting: Pre-approved removal contractors	Yes <sup>3</sup>	-	-	-	-	-	-	Yes <sup>18</sup>	Yes <sup>26</sup>	Yes	-
	Contracting: Pre-event contracts and staged agreements in place	-	-	-	-	-	-	-	Yes <sup>18</sup>	Yes <sup>26</sup>	-	-
	Docks for wet storage of vessels	Yes <sup>2</sup>	-	Yes <sup>7,10</sup>	-	-	Yes <sup>14</sup>	-	-	Yes <sup>27</sup>	-	-
	Facility suitable for establishing an emergency operations center (EOC)	Yes <sup>2</sup>	Yes	Yes <sup>7</sup>	-	-	Yes	-	Yes	Yes	Contract	-
	Funding for marine debris removal	Yes <sup>3</sup>	-	Yes <sup>10</sup>	-	-	Yes <sup>16</sup>	Yes	Yes <sup>21</sup>	Yes <sup>28</sup>	Yes	-
	Laboratory space	Yes <sup>2,3</sup>	-	Yes <sup>7</sup>	-	-	-	-	Contract <sup>18</sup>	-	Yes	-
	Pre-designated landfill/disposal sites	Contract <sup>1</sup>	-	-	-	-	-	-	-	-	-	-
	Research program established to analyze long-term trends, impacts, etc.	Yes <sup>2</sup>	Yes	Yes <sup>7</sup>	-	-	Yes	-	Yes <sup>18</sup>	-	-	-
	Staging/Off-Loading: Land with water access to stage, offload debris (has not been evaluated for suitability or officially pre-designated)	Yes <sup>2</sup>	-	Yes <sup>10</sup>	-	-	Yes <sup>14</sup>	-	-	-	-	-
	Staging/Off-Loading: Pre-designated staging, off-loading and special handling areas (already evaluated for suitability)	Yes <sup>2,4</sup>	-	Yes <sup>10</sup>	-	-	-	-	-	Yes	-	-
	Staging area for dry storage of vessels	Yes <sup>2</sup>	-	Yes <sup>10</sup>	-	-	Yes	-	Yes <sup>18</sup>	Yes <sup>29</sup>	-	Yes
Other logistical support, including fuel, housing, food, etc.	Yes <sup>2</sup>	Yes	-	-	-	-	-	-	-	Yes	-	

Note: Each agency self-reported capabilities which could be used during marine debris response in Florida. Agencies were asked to indicate whether capabilities were in-house or were contracted through a third party. Footnotes refer to additional information provided for a particular capability. While not included in this table, local jurisdictions may also possess capabilities listed above and should be included in all phases of response to maximize utilization of local expertise and resources.

<sup>1</sup>DEP Solid Waste Section

<sup>2</sup>DEP Apalachicola National Estuarine Research Reserve

<sup>3</sup>DEP Office of Emergency Response (OER). Contracting authority for OER response/cleanup contracts only.

<sup>4</sup>DEP Solid Waste Section assists counties with identifying debris storage areas and pre-approves debris staging areas annually

<sup>5</sup>FDEM ESF lead contacts from other agencies may provide capabilities listed

<sup>6</sup>FDEM Debris staff may not always deploy to local events

<sup>7</sup>FWC Fish and Wildlife Research Institute (FWRI). Response would have to be of enough magnitude to warrant that FWRI move resources.

- <sup>8</sup>FWC Division of Habitat and Species Conservation
- <sup>9</sup>FWC Refers to post-processing of remote sensing
- <sup>10</sup>FWC Division of Law Enforcement
- <sup>11</sup>FWC Refers to mobile response trailer with satellite communications and Wi-Fi
- <sup>12</sup>BSEE BSEE may have other capabilities, but agency mission does not directly support debris response
- <sup>13</sup>FEMA Capabilities contingent upon a Presidential major disaster declaration. FEMA capable of mission-assigning other federal support to increase capabilities. FEMA has interactive live collection and mapping capabilities and a template wet debris collector map for Region IV.
- <sup>14</sup>NOAA Capability is particular to Florida Keys National Marine Sanctuary (FKNMS)
- <sup>15</sup>NOAA Coordinates marine mammal and sea turtle stranding response and reviews proposed debris removal activities for compliance with ESA and Magnuson-Stevens Fisheries Conservation and Management Act
- <sup>16</sup>NOAA Funding through grant program and possible Congressional supplemental funding
- <sup>17</sup>USACE Jacksonville District
- <sup>18</sup>USACE Mobile District
- <sup>19</sup>USACE Have GIS cadre for response
- <sup>20</sup>USACE Have planning response teams
- <sup>21</sup>USACE Funding in place for federal projects only
- <sup>22</sup>USCG Not typically used for marine debris
- <sup>23</sup>USCG Small amounts of boom on hand but capable of using pre-event contracts for larger pollution events
- <sup>24</sup>USCG Not typically used for marine debris
- <sup>25</sup>USCG USCG contracts only
- <sup>26</sup>USCG For pollution incidents only
- <sup>27</sup>USCG Limited space and suitable for larger vessels only
- <sup>28</sup>USCG Funding for pollution incidents only
- <sup>29</sup>USCG Limited space
- <sup>30</sup>EPA EPA routinely conducts removal operations of hazardous substances and oil, including debris. EPA resources would be tasked by the EPA personnel operating in the Unified Command or by EPA's Federal On-Scene Coordinator/Duty Officer in Region 4.

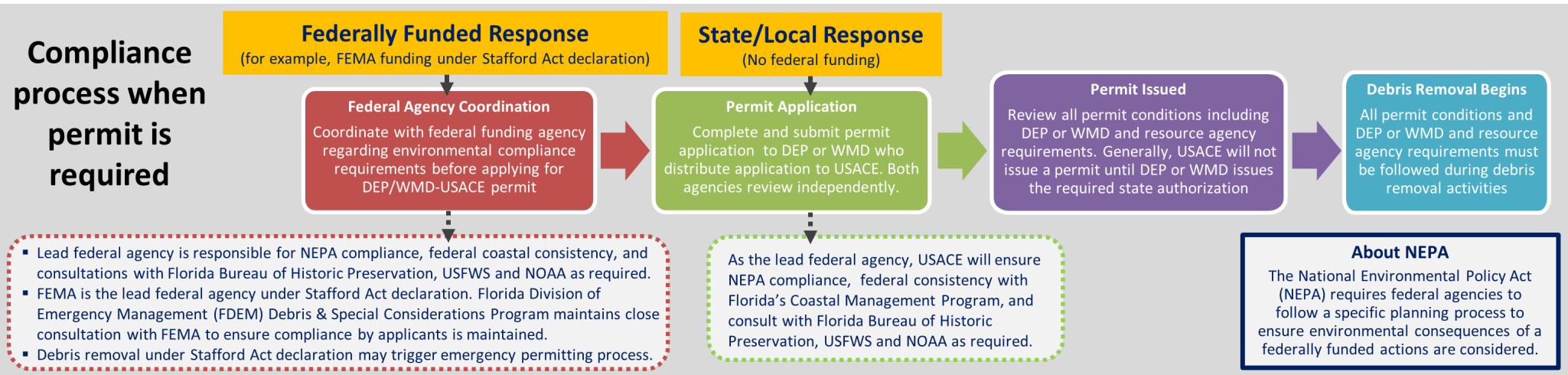


## **4 Permitting and Compliance Requirements in Florida**

The “Permitting and Compliance for Marine Debris Removal in Florida” handout on the following page synthesizes permitting and compliance requirements that must be met before marine debris removal operations begin. The top portion of the handout outlines the process to follow to stay in compliance, while the bottom portion highlights specific state and federal agency requirements with general contact information.

# Permitting and Compliance for Marine Debris Removal in Florida

- FL Department of Environmental Protection (DEP) permit may be required if debris removal involves alteration of surface water flows or is on or likely to affect natural sandy beaches. A separate state-owned submerged lands authorization may be needed if work is along navigable waters and extends past the mean high water line.
- U.S. Army Corps of Engineers (USACE) permit may be required for debris removal in waterways and wetlands if the activity involves dredging, the discharge of dredge or fill material, or involves structures or work impacting the navigability of a waterway. USACE, DEP and Water Management Districts (WMD) have a joint application process.
- The **lead federal agency** is responsible for compliance with National Environmental Policy Act (NEPA), federal coastal consistency and consulting with tribal and resource agencies including Florida Bureau of Historic Preservation, U.S. Fish and Wildlife Service (USFWS) and the National Oceanic and Atmospheric Administration (NOAA) as required.



## Agency Requirements and Contact Numbers

<p><b>Florida Department of Environmental Protection (DEP)</b></p> <p><b>Submerged Lands and Environmental Resource Coordination</b> 850-245-8702</p> <p><b>Beaches, Inlets and Ports Program</b> 850-245-8020</p>	<ul style="list-style-type: none"> <li>DEP district offices, Water Management Districts (WMD) or delegated local governments serve as the initial agency to submit a permit application. DEP/WMD/local government distributes a copy to USACE and both agencies independently process application.                     <ul style="list-style-type: none"> <li>Environmental Resource Program (ERP) permit required if debris removal alters surface water flows, such as dredging or filling</li> <li>State-owned submerged lands authorization required if debris removal is along navigable waters past mean high water line</li> <li>Joint Coastal Permit required if debris removal is on or likely to affect Florida's natural sandy beaches</li> </ul> </li> <li>Permit not required to remove derelict vessel from state waters if best management practices are followed and environment in unharmed</li> </ul>	<p><b>U.S. Fish and Wildlife Service (USFWS)</b></p> <p><b>Panama City ESO</b> 850-769-0552</p> <p><b>North Florida ESO</b> 904-731-3336</p> <p><b>South Florida ESO</b> 772-562-3909</p>	<ul style="list-style-type: none"> <li>Consultation with local Ecological Services Office (ESO) required if marine debris response involves Federal permits and/or funding (USACE permit, FEMA funding, etc.) to comply with:                     <ul style="list-style-type: none"> <li>Endangered Species Act (ESA) to ensure actions do not adversely affect listed threatened or endangered species or critical habitat for land and freshwater species and certain marine species such as manatee.</li> <li>Coastal Barrier Resources Act to ensure actions do not encourage development on coastal barriers along the Gulf and Atlantic coasts.</li> </ul> </li> </ul>
<p><b>U.S. Army Corps of Engineers (USACE)</b></p> <p><b>Jacksonville District Regulatory Division</b> 904-232-1177</p>	<ul style="list-style-type: none"> <li>Permit(s) that may be required for removal work in waterways and wetlands                     <ul style="list-style-type: none"> <li><b>NWP-3 Maintenance</b> for removal/maintenance of culverts, sediments or debris accumulated around outfalls, bridges, etc. in wetland areas</li> <li><b>NWP-22 Removal of Vessels</b> for removal of wrecked, abandoned, or disabled vessels or other man-made obstructions to navigation</li> <li><b>NWP-37 Emergency Watershed Protection &amp; Rehabilitation</b> for work done under NRCS's Emergency Watershed Protection program</li> <li><b>NWP-38 Cleanup Hazardous/Toxic Waste</b> for containment, stabilization, or removal of hazardous or toxic waste not under CERCLA/NCP</li> </ul> </li> </ul>	<p><b>National Oceanic and Atmospheric Administration (NOAA)</b></p> <p><b>National Marine Fisheries Service (NMFS)</b> ESA: 727-824-5312 EFH: 727-551-5736</p> <p><b>Florida Keys National Marine Sanctuary (FKNMS)</b> 305-797-7229</p>	<ul style="list-style-type: none"> <li>NMFS: Consultation required if marine debris response involves federal permits and/or funding (USACE permit, FEMA funding, etc.) to comply with:                     <ul style="list-style-type: none"> <li>Endangered Species Act (ESA) to ensure actions do not adversely affect listed threatened or endangered marine species or critical habitat.</li> <li>Magnuson-Stevens Fisheries Conservation and Management Act to ensure actions do not adversely affect Essential Fish Habitat (EFH).</li> </ul> </li> <li>FKNMS: Consultation required for federal actions internal or external to a national marine sanctuary, including private activities authorized by licenses, leases, or permits, that are likely to destroy, cause the loss of, or injure any sanctuary resources.</li> <li>FKNMS: General Permit or Letter of Authorization required for debris removal projects involving activities that are prohibited by FKNMS regulation or are likely to destroy, cause the loss of, or injure any sanctuary resource.</li> </ul>
<p><b>Florida Department of State</b></p> <p><b>Bureau of Historic Preservation</b> 850-245-6333</p>	<ul style="list-style-type: none"> <li>Serves as the State Historic Preservation Office (SHPO) and ensures compliance with the National Historic Preservation Act.</li> <li>Consultation with State Historic Preservation Office required if marine debris response involves federal permits and/or funding (USACE permit, FEMA funding, etc.) and has the potential to affect historic or cultural sites included in or eligible for the National Register of Historic Places.</li> </ul>	<p><b>Florida Division of Emergency Management (FDEM)</b></p> <p><b>Bureau of Recovery, Debris &amp; Special Considerations Program</b> 850-922-5914</p>	<ul style="list-style-type: none"> <li>Maintain office in the Joint Field Office with FEMA's Environmental and Historic Preservation (EHP) section during Stafford Act declarations</li> <li>Assist both Public Assistance and Individual Assistance program with environmental and historic preservation compliance and maintain coordination with FEMA throughout the process of recovery.</li> </ul>



## Contact Information

Note: Contact information is only included for organizations who have provided and/or approved information in the following tables.

### State/Local Agencies

Agency	Division	Topic	Point of Contact	Phone	Email
County Emergency Management Agencies	-	-	See FDEM, 2020a at <a href="https://www.floridadisaster.org/counties/">https://www.floridadisaster.org/counties/</a>	-	-
Florida Department of Agriculture and Consumer Services (FDACS)	Division of Animal Industry	ESF 17 Animal and Agricultural Issues	LeiAnna Tucker	850-410-0920	Leianna.Tucker@FDACS.gov
			Benjamin Motes	850-321-9830	Benjamin.Motes@FDACS.gov
	Division of Aquaculture	Coordination	Portia Sapp	850-617-7600	Portia.Sapp@FDACS.gov
Florida Department of Environmental Protection (DEP)	Division of State Lands: Bureau of Public Land Administration	Planning and coordination	Brad Richardson	850-245-2563	Brad.Richardson@FloridaDEP.gov
	Division of State Lands: Submerged Lands Section	Determines state ownership of submerged coastal areas	Title and Land Records Section	850-245-2555	-
	Division of Waste Management: Solid Waste Section	Debris management and disposal	El Kromhout, Environmental Administrator	850-245-8744	Elizabeth.Kromhout@FloridaDEP.gov
	Division of Water Resource Management: Beaches, Inlets and Ports Program	Joint Coastal Permit	See DEP, 2020a at <a href="https://floridadep.gov/rcp/beaches-inlets-ports">https://floridadep.gov/rcp/beaches-inlets-ports</a>	850-245-8020	BIPP@FloridaDEP.gov
	Division of Water Resource Management: SLERC	ERP permit	See DEP, 2020c for District Offices at <a href="https://floridadep.gov/districts">https://floridadep.gov/districts</a>	850-245-8702	-
	Office of Resilience and Coastal Protection: Apalachicola NERR	Capability contact for equipment	Jason Garwood, Research Coordinator	850-670-7716	Jason.Garwood@FloridaDEP.gov
		Capability contact for IT support	Jennifer Harper, Manager	850-670-7716	Jennifer.Harper@FloridaDEP.gov
		Capability contact for IT support	Megan Lamb, Stewardship Coordinator	850-670-7709	Megan.Lamb@FloridaDEP.gov
	Office of Resilience and Coastal Protection: Coral Reef Conservation Program	Southeast Florida Marine Debris Reporting and Removal Program	Taylor Tucker, Reef Resilience Coordinator	561-681-6631	Taylor.Tucker@FloridaDEP.gov
			SEAFAN Hotline	866-770-SEFL (7335)	Coral@FloridaDEP.gov
Office of Resilience and Coastal Protection: FCMP	Marine debris rapid response coordination	Ann Lazar, Environmental Administrator	850-245-2168	Ann.Lazar@FloridaDEP.gov	
Office of Emergency Response (OER)	ESF 10 lead and capability contact	Sam Graves, Environmental Administrator, Emergency Coordinating Officer ESF 10	850-245-2875 (O) 850-274-7462 (C) 1-800-320-0519 (Emergency)	Samuel.A.Graves@FloridaDEP.gov	
Florida Department of State	Division of Historical Resources: Bureau of Historic Preservation	National Historic Preservation Act compliance	Timothy Parsons, Deputy State Historic Preservation Officer	850-245-6333	Timothy.Parsons@dos.myflorida.com
Florida Department of Transportation	-	ESF 3 lead	Irene Cabral, Emergency Coordination Officer	850-445-7111	Irene.Cabral@dot.state.fl.us

## State Agencies Continued

Agency	Division	Topic	Point of Contact	Phone	Email
Florida Division of Emergency Management (FDEM)	-	Report hazardous material, marine, petroleum or weather incidents	State Watch Office	800-320-0519	-
	Recovery Bureau	Planning and coordination	Buck Dickinson, State Public Assistance Officer	850-591-4381	Frederick.Dickinson@em.myflorida.com
		Debris considerations	Debris and Special Considerations Program	850-922-5914	-
Florida Fish and Wildlife Conservation Commission (FWC)	Division of Habitat and Species Conservation	Marine debris rapid response coordination and capability contact	Kent Smith, Biological Administrator	850-617-9504	Kent.Smith@MyFWC.com
	Division of Law Enforcement	Boating and waterways: Derelict Vessel Program	Phil Horning, Derelict Vessel Program Administrator	850-617-9540	Phil.Horning@MyFWC.com
			Captain Travis Franklin, Waterway Management Unit Leader	850-617-9518	Travis.Franklin@MyFWC.com
		Agency marine debris coordination	Jennifer McGee, Marine Debris Program Administrator	850-727-3043	Jennifer.McGee@MyFWC.com
	Division of Marine Fisheries Management	Trap removal programs	Pamela Gruver	850-617-9624	Pamela.Gruver@MyFWC.com
	Fish and Wildlife Research Institute (FWRI)	Capability contact for technology, manpower/expertise, electronic equipment	Rene Baumstark, Information Science & Management Section Leader	727 502-4866	Rene.Baumstark@MyFWC.com
			Capability contact for sampling equipment, vessels, logistics	Leanne Flewelling, Deputy Director	727-502-4891
Pollution response, resources at risk, damage assessment			Timyn Rice, State Scientific Support Coordinator	727-502-4855 (O) 727-310-7368 (C)	Timyn.Rice@MyFWC.com
Water Management Districts (WMD)	Northwest Florida WMD	Permitting and compliance and response within WMD jurisdiction	-	850-539-5999	-
	South Florida WMD		-	561-686-8800	-
	Southwest Florida WMD		-	352-796-7211	-
	St. Johns River WMD		-	386-329-4500	-
	Suwannee River WMD		-	386-362-1001	-

## Federal Agencies

Agency	Division	Topic	Point of Contact	Phone	Email
Bureau of Safety and Environmental Enforcement (BSEE)	Marine Trash and Debris Program	Planning and coordination	James Sinclair, Marine Ecologist	504-736-2789	James.Sinclair@bsee.gov
Federal Emergency Management Agency (FEMA)	Region IV	Funding following Presidential disaster declaration	Contact local Emergency Management Agency (see FDEM, 2020a)	-	-
		Technical expertise for removal operations and environmental, compliance, and permitting expertise	Scott Fletcher, Sr. Environmental Protection Specialist	202-322-3924 (C)	Scott.Fletcher@fema.dhs.gov
		Environmental and historic preservation	Rose Gutowski, Regional Unified Federal Review (UFR) Coordinator	202-655-8714 (C)	Rose.Gutowski@fema.dhs.gov



## Federal Agencies Continued

Agency	Division	Topic	Point of Contact	Phone	Email
National Oceanic and Atmospheric Administration (NOAA)	National Marine Fisheries Service (NMFS or NOAA Fisheries)	Emergency ESA/EFH consultation	-	-	Nmfs.ser.emergency.consult@noaa.gov
		EFH information	Atlantic: Pace Wilber	843-568-4184	Pace.Wilber@noaa.gov
			Gulf: David Dale	727-551-5736	David.Dale@noaa.gov
			Gulf: Rusty Swafford	409-766-3699	Rusty.Swafford@noaa.gov
		ESA information	General Contact	727-824-5312	-
			Florida Keys and Caribbean: Melissa Alvarez	201-978-9075 (C)	Melissa.Alvarez@noaa.gov
	Joe Cavanaugh, Consultation Biologist		-	Joseph.Cavanaugh@noaa.gov	
	National Ocean Service, Florida Keys National Marine Sanctuary (FKNMS)	Response in FKNMS and capability contact	Lisa Symons, Regional Response Coordinator	305-434-9370	Lisa.Symons@noaa.gov
		Compliance consultation	Stephen Werndli, Enforcement Coordinator	305-797-7229 (C)	Stephen.Werndli@noaa.gov
	National Ocean Service, Office of Coast Survey	Navigation preparation and response	Nicolas Alvarado, Regional Navigation Manager - South Florida, Puerto Rico, U.S. Virgin Islands	202-253-9536 (C)	Florida.Navmanager@noaa.gov
National Ocean Service, Office of Response and Restoration	Marine debris planning and coordination	Ashley Hill, Florida Regional Coordinator	240-687-9434 (C)	Ashley.Hill@noaa.gov	
	Potential to release oil or hazardous substance	Brad Benggio, Scientific Support Coordinator for USCG District 7 and RRT IV	305-530-7925 (O) 206-375-5697 (24hr)	Brad.Benggio@noaa.gov	
		Adam Davis, Scientific Support Coordinator for USCG District 8 and backup for RRT IV	206-549-7759 (C) 206-526-4911 (24hr)	Adam.Davis@noaa.gov	
National Park Service (NPS)	-	Response on NPS-owned lands	Mark Frey, Chief, Science and Natural Resources Management Division	404-507-5704	Mark_Frey@nps.gov
			C. Anna Toline, Marine Scientist, Oceans Program Coordinator	843-518-1939	Catherine_Toline@nps.gov
Natural Resource Conservation Service (NRCS)	-	Emergency Watershed Protection (EWP) Program Information	Jason Strenth, State Conservation Engineer	352-338-9559 (O) 352-538-4892 (C)	Jason.Strenth@usda.gov
U.S. Air Force	-	Report launch/range debris in a waterway or shoreline	Patrick Command Post	321-494-7001	Cpost2@us.af.mil
U.S. Army Corps of Engineers (USACE)	Emergency Operations	Planning and coordination	Jacksonville District (Primary): Logan Wilkinson, Chief Emergency Management	904-232-1881	Logan.C.Wilkinson@usace.army.mil
			Mobile District (Support): Matt Tate	251-690-2241	Jacob.M.Tate@sam.usace.army.mil
	Navigation	Federally maintained waterway or channel	Jacksonville District: Trisston Brown	-	Trisston.Brown@usace.army.mil
			Mobile District: Nate Lovelace	251-694-3713	Nathan.D.Lovelace@usace.army.mil
<i>continued on next page</i>	Regulatory Program	Compliance and permitting expertise	Dale Beter	-	Dale.E.Beter@usace.army.mil
			Shawn Zinszer	-	Shawn.H.Zinszer@usace.army.mil
			Jacksonville District Regulatory Division	904-232-1177	-
			North Branch (Pensacola, Panama City, Jacksonville, Cocoa): Andy Kizlauskas, Chief	850-763-0717 x 8 904-304-9095 (C)	Andrew.A.Kizlauskas@usace.army.mil
South Branch (Palm Beach Gardens, Miami): Susan Kaynor			904-232-2517	Susan.R.Kaynor@usace.army.mil	

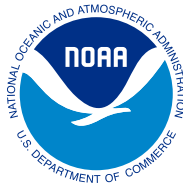
## Federal Agencies Continued

Agency	Division	Topic	Point of Contact	Phone	Email	
<i>continued from previous page</i>  U.S. Army Corps of Engineers (USACE)	Regulatory Program	Compliance and permitting expertise	West Branch (Gainesville, Tampa, Ft. Myers): Kelly Unger, Chief	904-232-1676	Kelly.E.Unger@usace.army.mil	
	-	Capability contact for remote sensing (UAS)	Brian Brodehl	904-232-3600	-	
		Capability contact for UAV/UAS	Mike Hensch	904-232-2665	-	
		Capability contact for environmental cleanup expertise	Bill Niemes	904-232-2815	-	
		Capability contact for equipment	Mark Shore	863-983-8101x236	-	
		Capability contact for NEPA	Eric Summa	904-232-1665	-	
U.S. Coast Guard (USCG)	-	Potential to release oil or hazardous substance	National Response Center (NRC)	800-424-8802	-	
		District 7	Planning and coordination	LTJG Andrew Garcia, RRT IV Coordinator	305-415-7072	Andrew.M.Garcia@uscg.mil
				Forest Willis, RRT IV Co-Chair	305-415-6676	Forest.A.Willis@uscg.mil
				Richard Lavigne, DRAT Supervisor	305-415-7138	Richard.J.Lavigne@uscg.mil
		Sector Key West capability contact	Sector Key West Command Center	305-292-8727	-	
	Sector Miami capability contact	Sector Miami Command Center	305-535-4472 305-535-4520	-		
	District 8	Planning and coordination	Dee Oos, Area Contingency Plan Program Manager	504-671-2233	Damara.A.Oos@uscg.mil	
			Mike Sams, Incident Management Preparedness Advisor	504-671-2234	Michael.K.Sams@uscg.mil	
			Adam Tyndale, Response Equipment Coordinator	504-671-2063	Adam.J.Tyndale@uscg.mil	
			District Response Advisory Team (DRAT) Supervisor	504-589-6225	-	
Sector Mobile capability contact			Sector Mobile: USCG Sector Mobile Command Center	251-441-6211	-	
U.S. Environmental Protection Agency (EPA)	Region IV	Potential to release oil or hazardous substance	National Response Center (NRC)	800-424-8802	-	
		Planning and coordination	Gary Andrew, RRT IV and ESF 10 Coordinator	678-733-1621	Andrew.Gary@epa.gov	
			Jose Negron, On-Scene Coordinator	404-562-8754	-	
			Chris Russell, On-Scene Coordinator	850-274-1575	Russell.Chris@epa.gov	
Capability contact	EPA Region IV Duty Officer	404-562-8700	-			
U.S. Fish and Wildlife Service (USFWS)	Ecological Service Program	Compliance and permitting expertise	Larry Williams, State Supervisor	772-469-4251	Larry_Williams@fws.gov	
			Gian Basili, Deputy State Supervisor	904-731-3079	Gianfranco_Basili@fws.gov	
			Karen Frutchet, Southeast Sea Turtle Coordinator	808-237-9032 (C)	Karen_Frutchet@fws.gov	
			North Florida Ecological Services Field Office	904-731-3336	FW4FLESRegs@fws.gov	
			Panama City Ecological Services Field Office	850-769-0552	FW4FLESRegs@fws.gov	
			South Florida Ecological Services Field Office	772-562-3909	FW4FLESRegs@fws.gov	
	National Wildlife Refuges	Response in Florida Keys NWR Complex	Steve Berger, Senior Federal Wildlife Officer	-	Steven_Berger@fws.gov	



**Tribal Governments**

Agency	Division	Topic	Point of Contact	Phone	Email
Miccosukee Tribe of Indians	-	Response on tribal lands	Billy Cypress, Chairman	305-223-8380	-
			Marla Poole	305-223-8380	Marlap@miccosukeetribe.com
			Beverly Tiger	305-223-8380	Beverlyt@miccosukeetribe.com
Seminole Tribe of Florida	-	Response on tribal lands	Marcellus Osceola Jr., Chairman	954-966-6300	Chairman@semtribe.com



Gina M. Raimondo  
United States Secretary of Commerce

Dr. Richard W. Spinrad  
Under Secretary of Commerce for Oceans and Atmosphere  
and NOAA Administrator

Nicole R. LeBoeuf  
Assistant Administrator for Ocean Services  
and Coastal Zone Management