

**Supplemental Material.** Percent cover, representative wave energy (RWE;  $\text{J m}^{-1}$ ), and tidal current speed (CUR;  $\text{cm s}^{-1}$ ) for binary maps of the 62 (100 x 100 m) seagrass landscapes. Landscapes are ordered by increasing RWE from left to right. Note that tidal current speed was unable to be measured for nine of the seagrass landscapes.

**Physical drivers of seagrass spatial configuration: the role of thresholds**

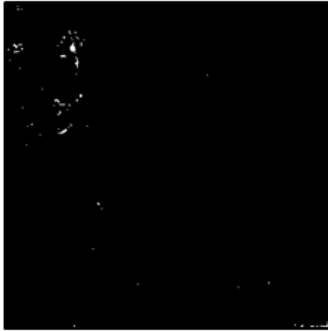
Amy V. Uhrin<sup>1\*</sup>, Monica G. Turner<sup>2</sup>

<sup>1</sup>Department of Commerce, National Oceanic and Atmospheric Administration, National Ocean Service, Office of Response and Restoration, Marine Debris Division, amy.uhrin@noaa.gov

<sup>2</sup>Department of Integrative Biology, University of Wisconsin

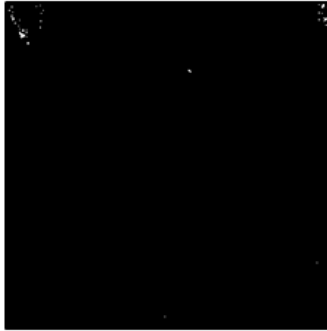
\*corresponding author

99.85, RWE 7.5, CUR 24.8



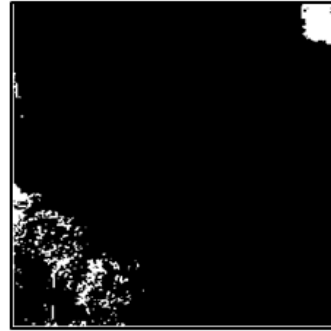
Q1.1

99.9%, RWE 7.7, CUR 19.4



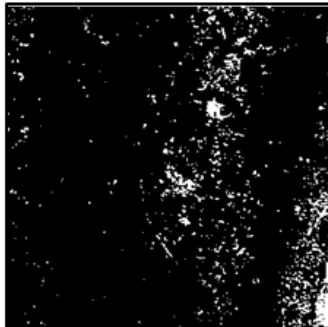
Q1.8

95.8%, RWE 7.8



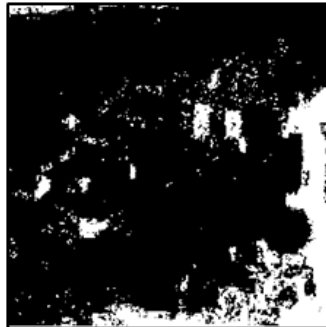
Q1.14

94.5%, RWE 9.0, CUR 20.5



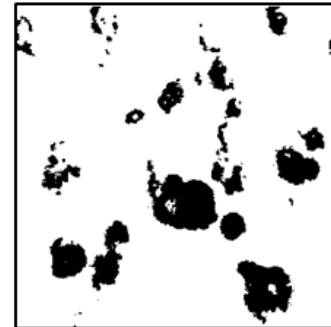
Q1.9

84.6%, RWE 10.1



Q1.13

12.7%, RWE 11.6, CUR 18.2



Q1.7

99.8%, RWE 21.4, CUR 17.2



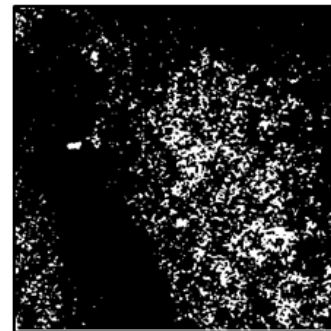
Q1.5

99.9%, RWE 26.7, CUR 24.5



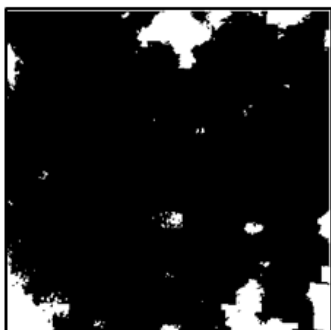
Q1.12

88.2%, RWE 44.1, CUR 14.0



Q1.6

90.2%, RWE 45.3



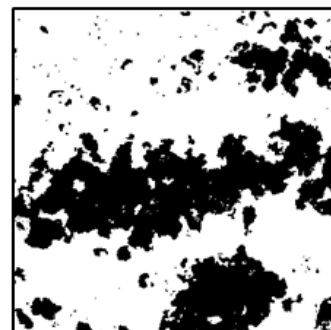
Q1.15

50.2%, RWE 46.8, CUR 22.3



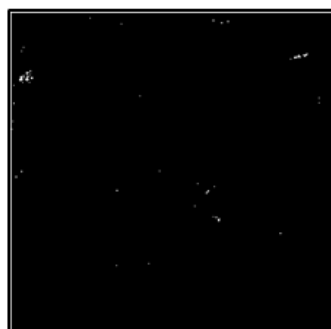
Q1.4

34.0%, RWE 47.9, CUR 13.9



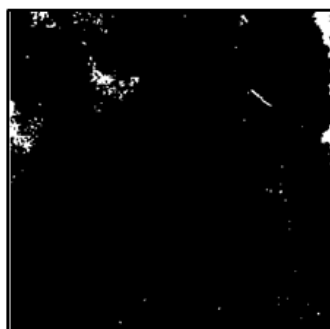
Q1.3

98.7%, RWE 73.9



Q1.16

97.8%, RWE 84.3, CUR 12.5



Q1.11

89.9%, RWE 145.7, CUR 10.6



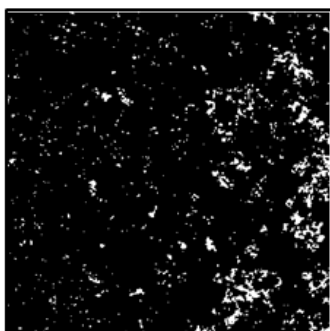
Q2.12

41.8%, RWE 173.6, CUR 56.5



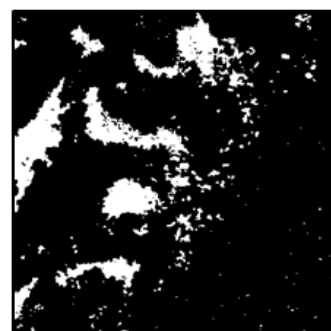
Q2.3

94.0%, RWE 186.9, CUR 22.1



Q2.5

87.2%, RWE 187.7, CUR 12.1



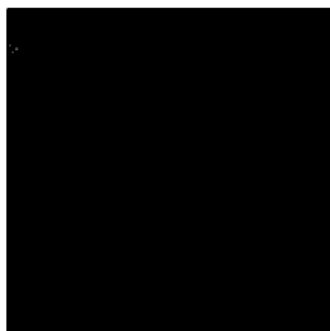
Q2.11

99.6%, RWE 191.2, CUR 19.1



Q2.4

100%, RWE 192.4



Q2.14

96.9%, RWE 197.2



Q2.15

97.5%, RWE 200.3, CUR 38.5



Q2.7

43.1%, RWE 202.9, CUR 28.5



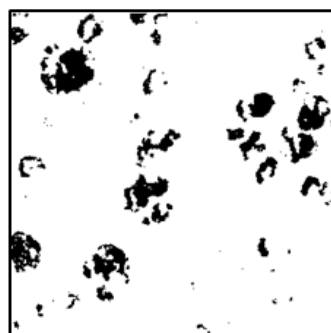
Q2.1

99.5%, RWE 211.2, CUR 29.5



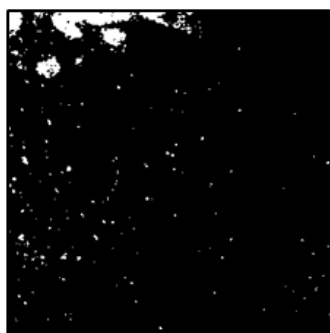
Q2.9

8.8%, RWE 218.1, CUR 6.1



Q2.2

96.5%, RWE 218.8, CUR 10.9



Q2.10

54.8%, RWE 267.1, CUR 27.5



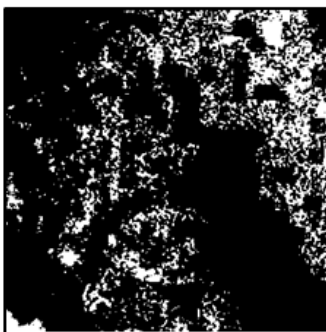
Q2.6

99.8%, RWE 276.1



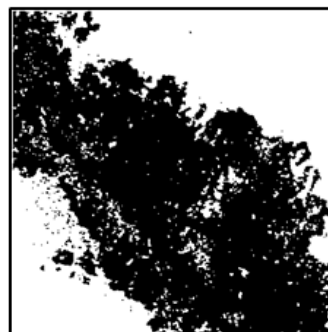
Q2.13

83.9%, RWE 291.1, CUR 24.5



Q2.8

56.0%, RWE 381.9, CUR 26.9



Q3.8

93.4%, RWE 391.2, CUR 32.5



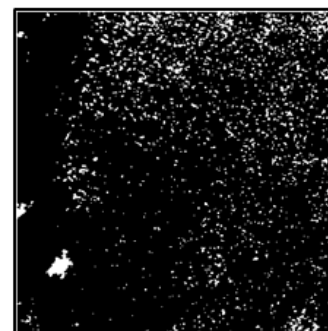
Q3.7

52.9%, RWE 427.9, CUR 23.4



Q3.5

92.7%, RWE 451.3, CUR 55.3



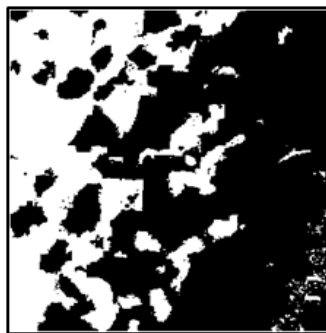
Q3.9

65.6%, RWE 485.2, CUR 47.0



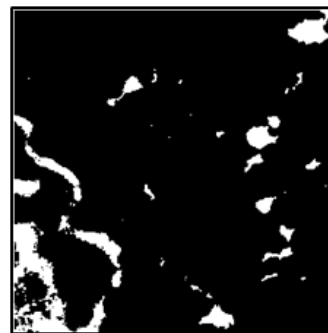
Q3.6

64.4%, RWE 560.8, CUR 22.5



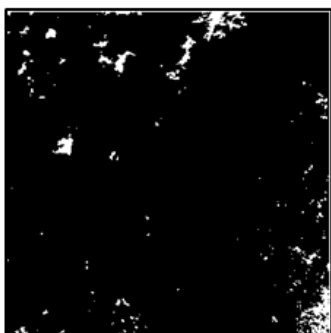
Q3.11

91.6%, RWE 587.1, CUR 9.7



Q3.2

96.7%, RWE 587.6, CUR 15.1



Q3.1

86.9%, RWE 640.5



Q3.14

71.5%, RWE 643.7, CUR 26.9



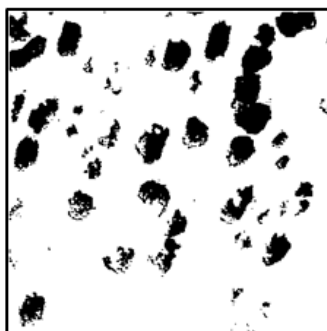
Q3.12

74.4%, RWE 647.6, CUR 16.5



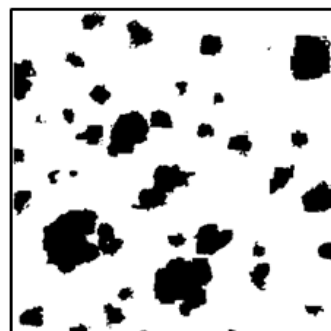
Q3.3

14.6%, RWE 709.7, CUR 34.7



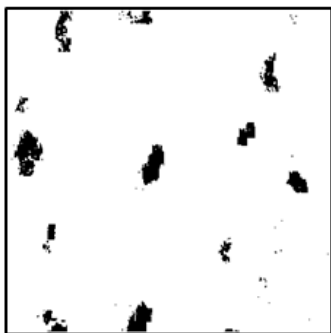
Q3.10

17.6%, RWE 719.1, CUR 27.7



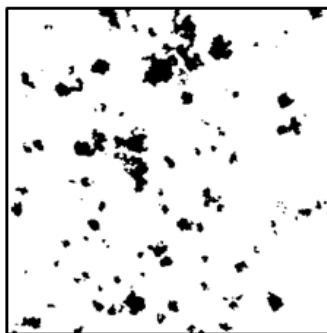
Q3.4

3.7%, RWE 763.1



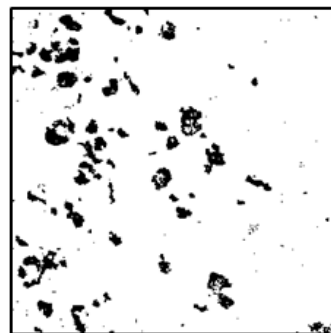
Q3.15

8.1%, RWE 785.9, CUR 21.1



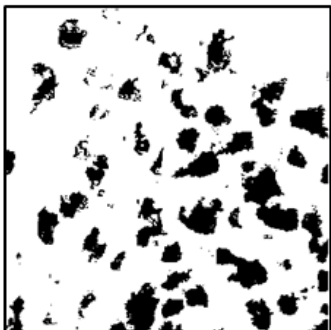
Q3.13

7.4%, RWE 962.5, CUR 28.3



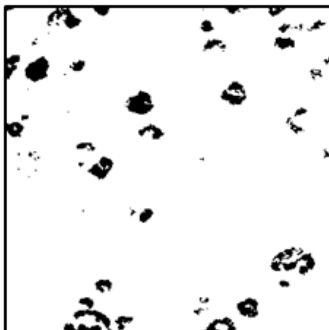
Q4.13

19.0%, RWE 990.1, CUR 29.4



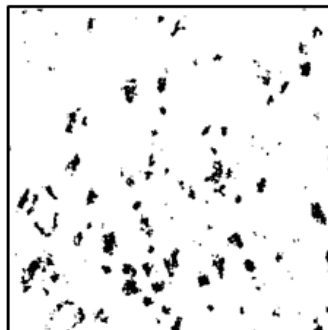
Q4.2

5.4%, RWE 1099.2, CUR 49.3



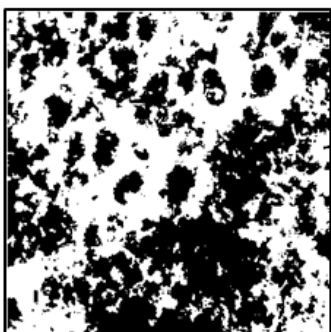
Q4.14

5.5%, RWE 1205.9, CUR 16.5



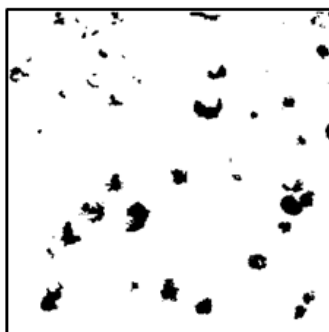
Q4.5

47.1%, RWE 1370.6, CUR 32.1



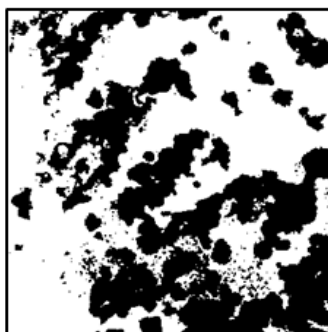
Q4.1

4.8%, RWE 1390.8, CUR 28.3



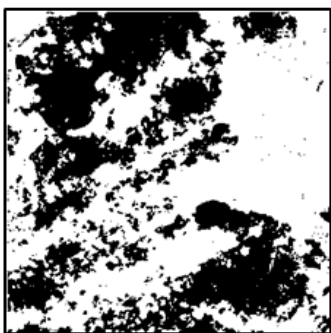
Q4.4

40.9%, RWE 1391.6, CUR 15.6



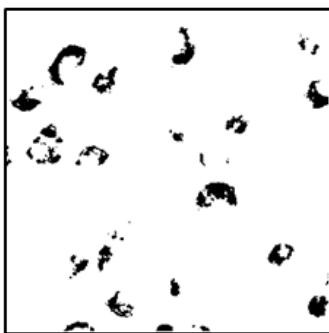
Q4.6

39.9%, RWE 1402.8, CUR 22.4



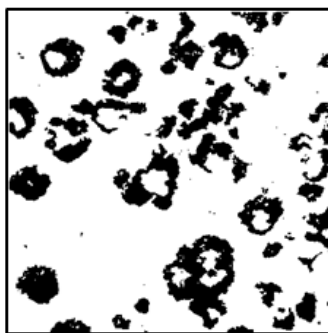
Q4.3

4.8%, RWE 1616.4, CUR 24.3



Q4.11

22.5%, RWE 1627.5, CUR 61.2

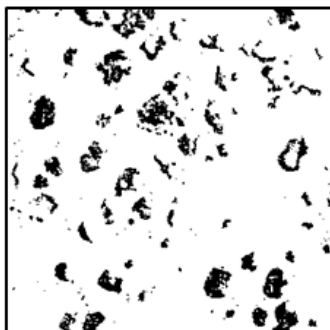


Q4.7

13.2%, RWE 1675.9, CUR 10.1    10.2%, RWE 1762.6, CUR 30.1    30.2%, RWE 1820.9, CUR 21.8



Q4.12

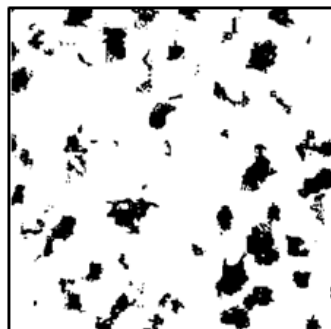


Q4.8

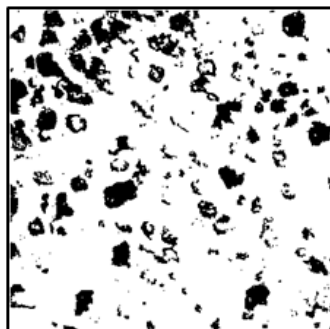


Q4.9

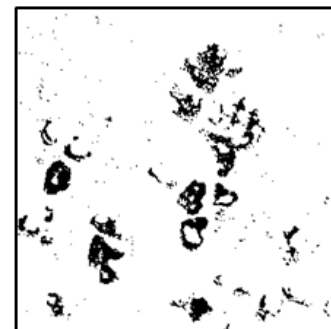
13.9%, RWE 1896.2, CUR 13.9    17.3%, RWE 1949.5, CUR 34.1    7.1%, RWE 2041.2, CURR 51.0



Q4.18

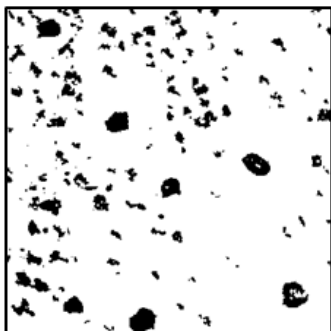


Q4.10

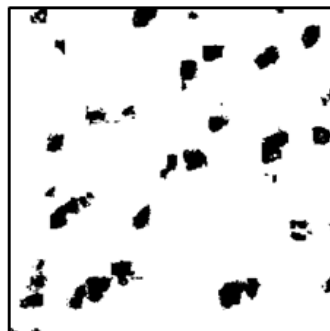


Q4.17

8.6%, RWE 2181.9, CUR 18.2    7.8%, RWE 2346.9, CUR 11.9



Q4.16



Q4.15