



## *Supplement of*

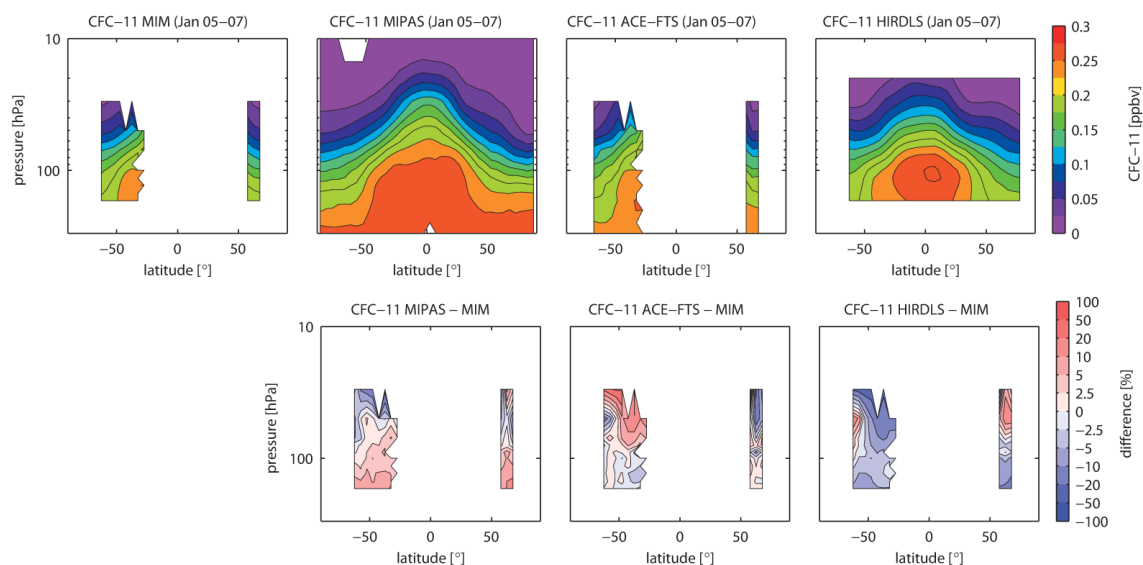
# **The SPARC Data Initiative: comparisons of CFC-11, CFC-12, HF and SF<sub>6</sub> climatologies from international satellite limb sounders**

**S. Tegtmeier et al.**

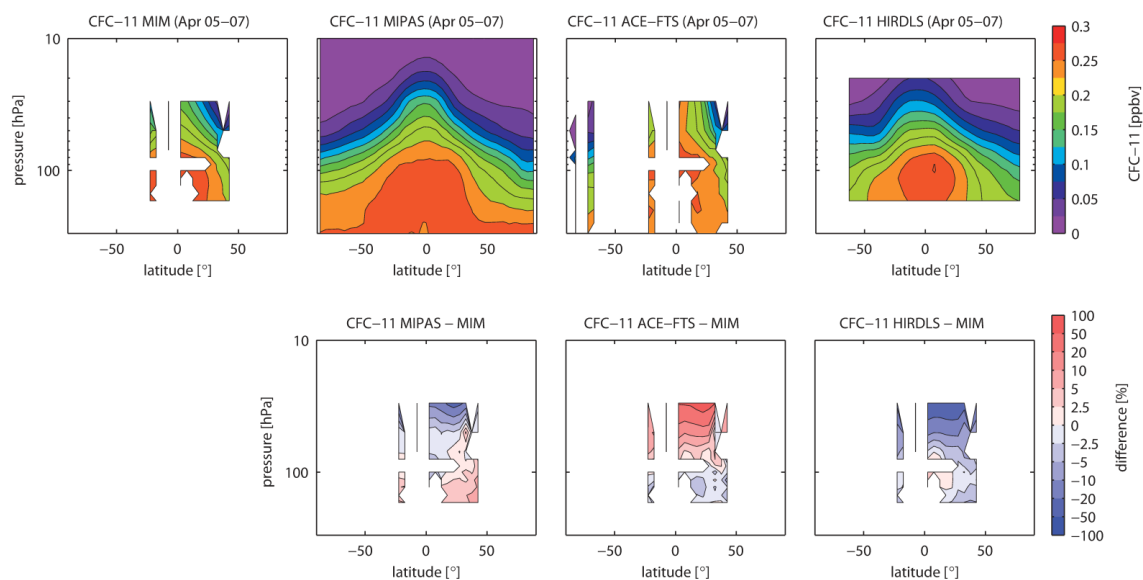
*Correspondence to:* S. Tegtmeier (stegtmeier@geomar.de)

The copyright of individual parts of the supplement might differ from the CC-BY 3.0 licence.

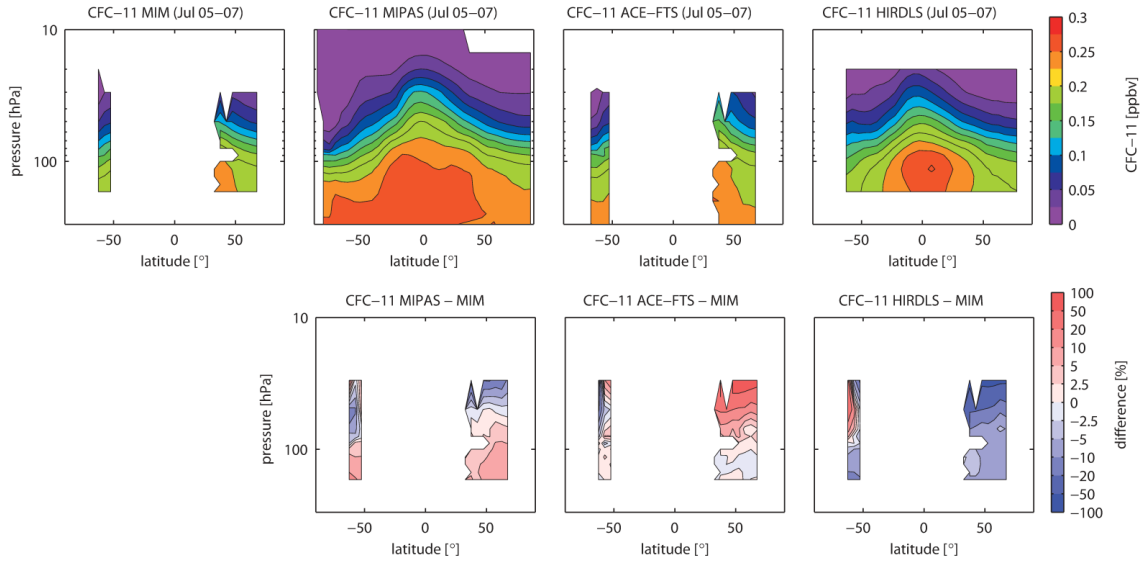
## Supplementary material



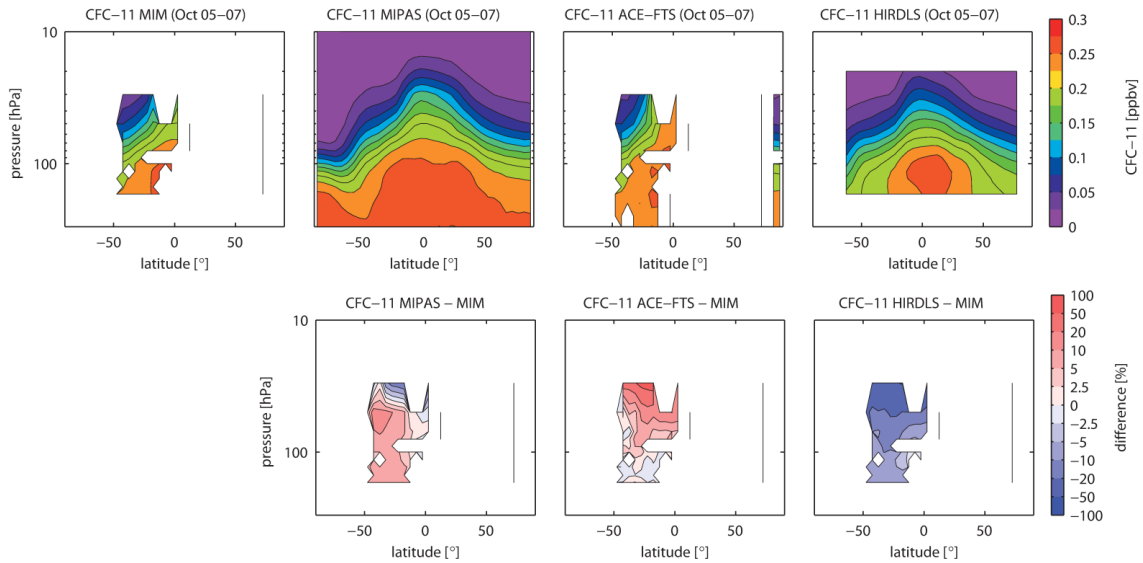
**Figure S1.** Altitude-latitude cross-sections of monthly zonal mean CFC-11 for the MIM, MIPAS, ACE-FTS and HIRDLS (upper panels) and relative differences between the individual instruments and the MIM (lower panels) are shown for January 2005-2007.



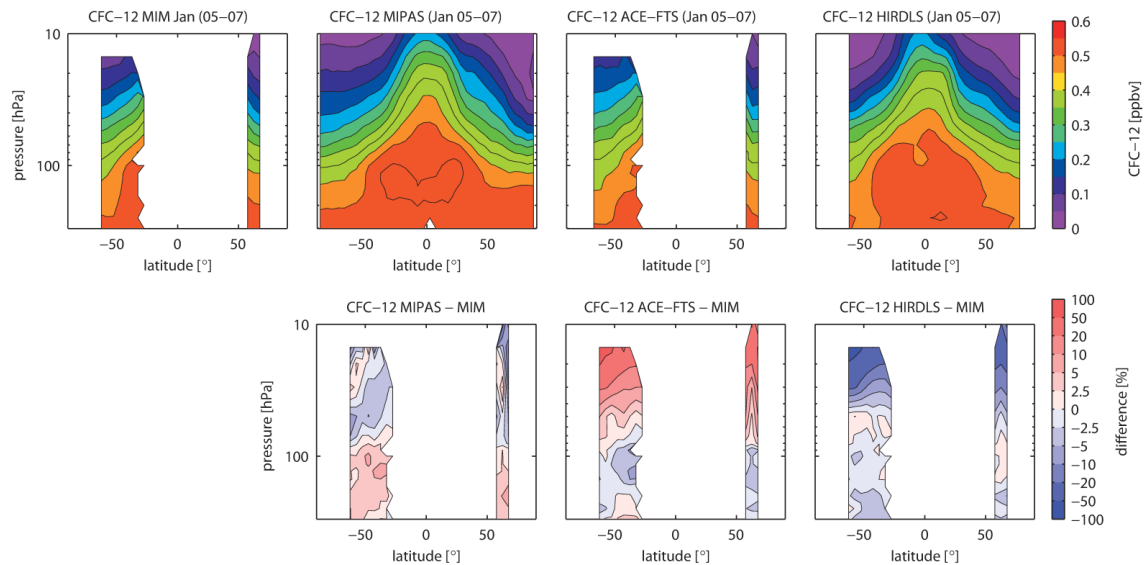
**Figure S2.** Altitude-latitude cross-sections of monthly zonal mean CFC-11 for the MIM, MIPAS, ACE-FTS and HIRDLS (upper panels) and relative differences between the individual instruments and the MIM (lower panels) are shown for April 2005-2007.



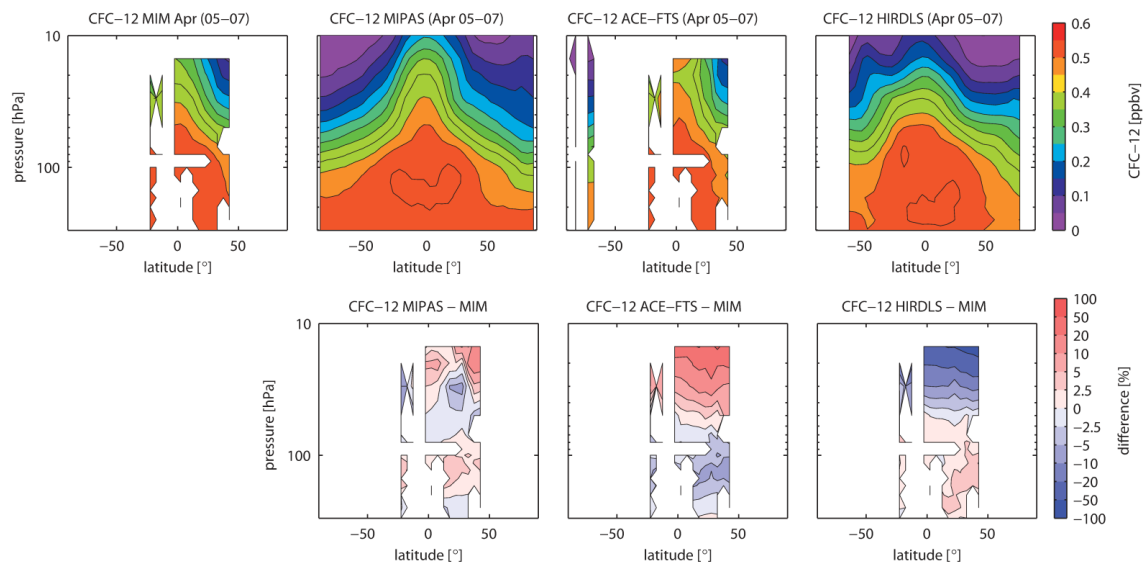
**Figure S3.** Altitude-latitude cross-sections of monthly zonal mean CFC-11 for the MIM, MIPAS, ACE-FTS and HIRDLS (upper panels) and relative differences between the individual instruments and the MIM (lower panels) are shown for July 2005-2007.



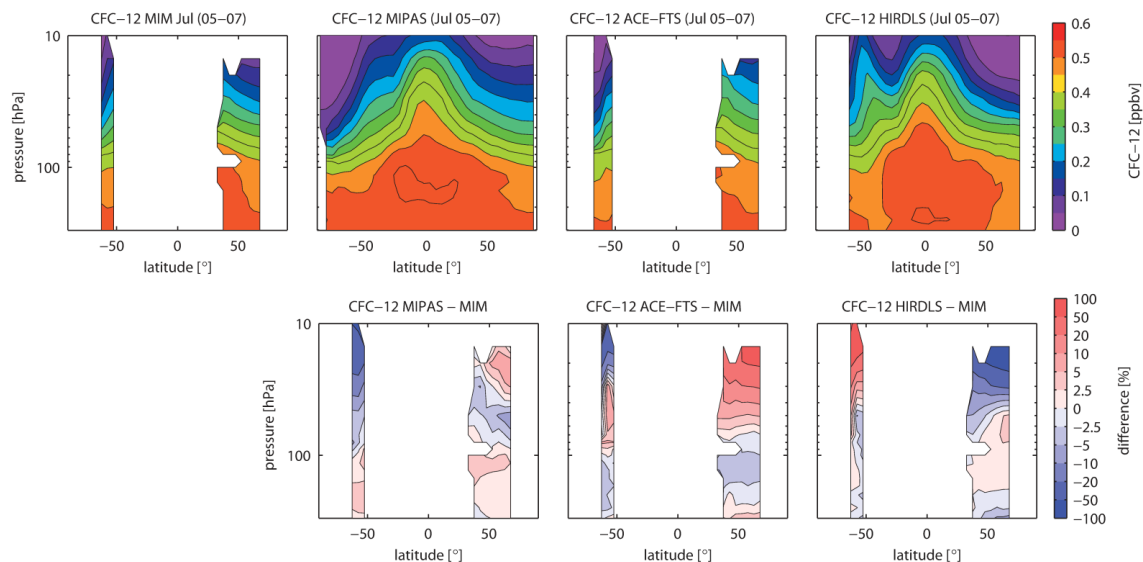
**Figure S4.** Altitude-latitude cross-sections of monthly zonal mean CFC-11 for the MIM, MIPAS, ACE-FTS and HIRDLS (upper panels) and relative differences between the individual instruments and the MIM (lower panels) are shown for October 2005-2007.



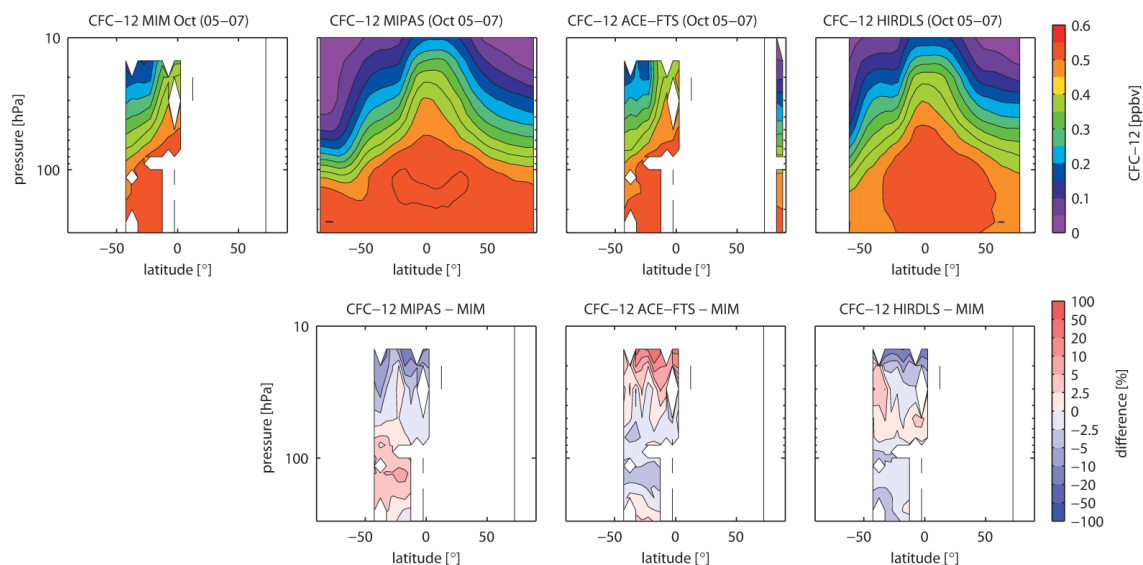
**Figure S5.** Altitude-latitude cross-sections of monthly zonal mean CFC-12 for the MIM, MIPAS, ACE-FTS and HIRDLS (upper panels) and relative differences between the individual instruments and the MIM (lower panels) are shown for January 2005-2007.



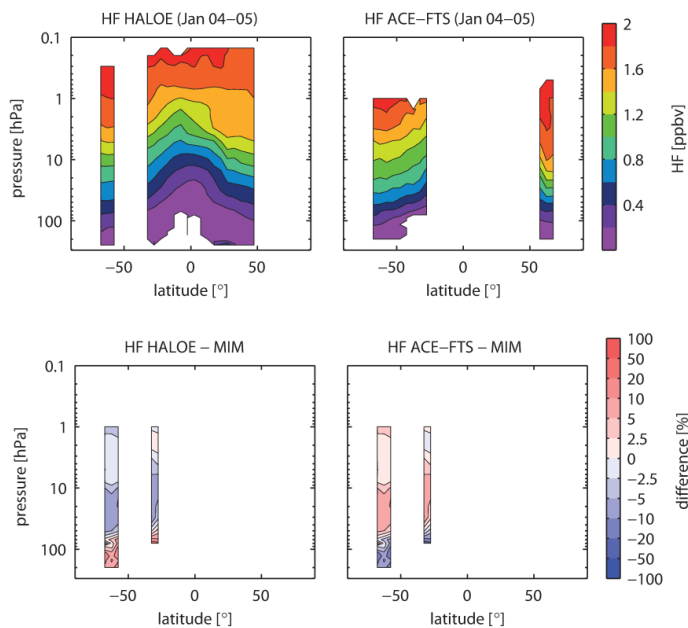
**Figure S6.** Altitude-latitude cross-sections of monthly zonal mean CFC-12 for the MIM, MIPAS, ACE-FTS and HIRDLS (upper panels) and relative differences between the individual instruments and the MIM (lower panels) are shown for April 2005-2007.



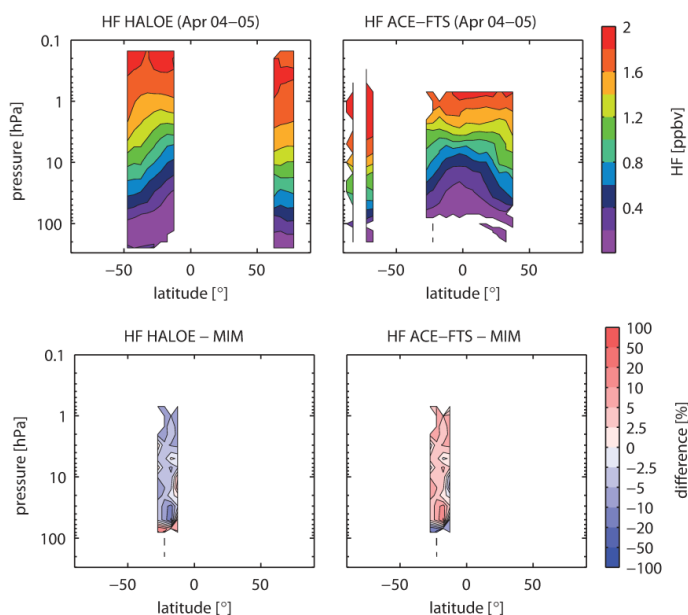
**Figure S7.** Altitude-latitude cross-sections of monthly zonal mean CFC-12 for the MIM, MIPAS, ACE-FTS and HIRDLS (upper panels) and relative differences between the individual instruments and the MIM (lower panels) are shown for July 2005-2007.



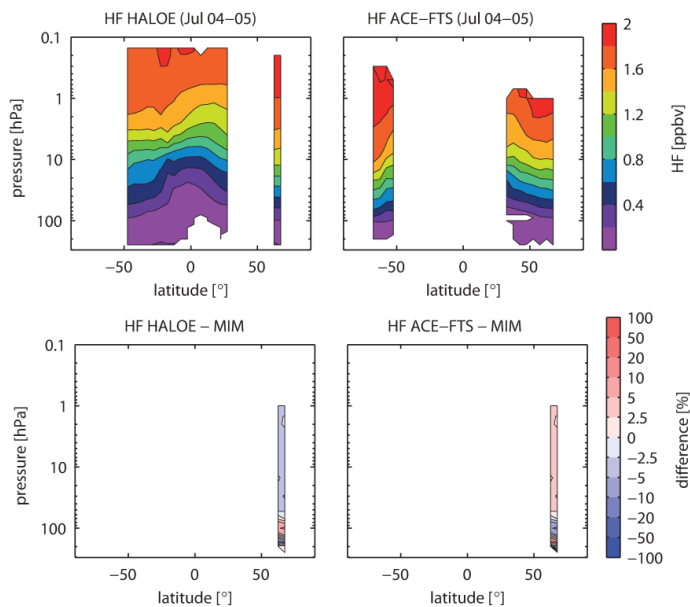
**Figure S8.** Altitude-latitude cross-sections of monthly zonal mean CFC-12 for the MIM, MIPAS, ACE-FTS and HIRDLS (upper panels) and relative differences between the individual instruments and the MIM (lower panels) are shown for October 2005-2007.



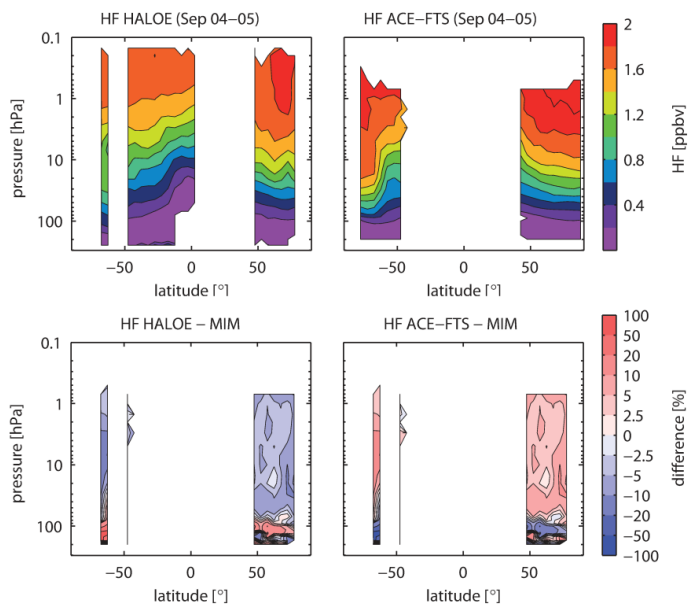
**Figure S9.** Altitude-latitude cross-sections of monthly zonal mean HF (upper panels) for HALOE and ACE-FTS and relative differences between the individual instruments and the MIM (lower panels) are shown for January 2004-2005.



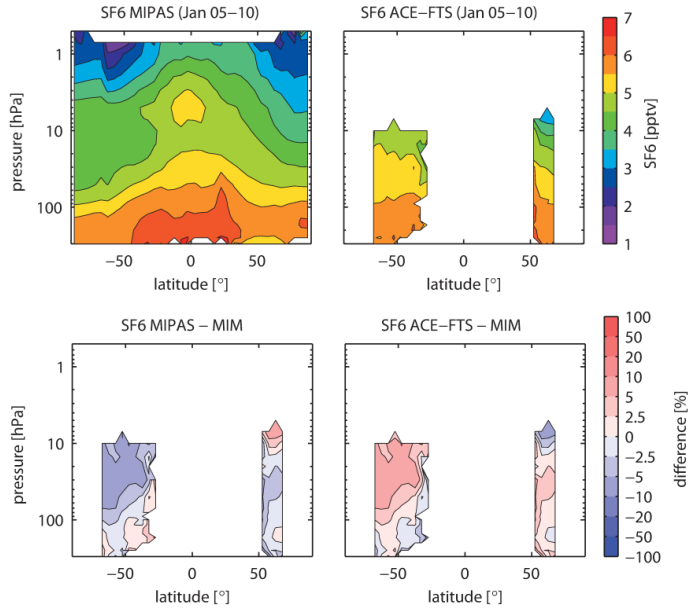
**Figure S10.** Altitude-latitude cross-sections of monthly zonal mean HF (upper panels) for HALOE and ACE-FTS and relative differences between the individual instruments and the MIM (lower panels) are shown for April 2004-2005.



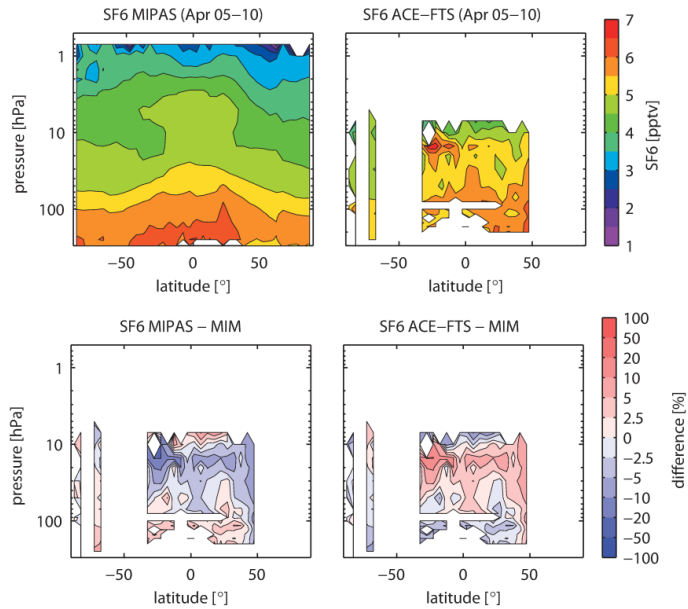
**Figure S11.** Altitude-latitude cross-sections of monthly zonal mean HF (upper panels) for HALOE and ACE-FTS and relative differences between the individual instruments and the MIM (lower panels) are shown for July 2004-2005.



**Figure S12.** Altitude-latitude cross-sections of monthly zonal mean HF (upper panels) for HALOE and ACE-FTS and relative differences between the individual instruments and the MIM (lower panels) are shown for September 2004-2005.

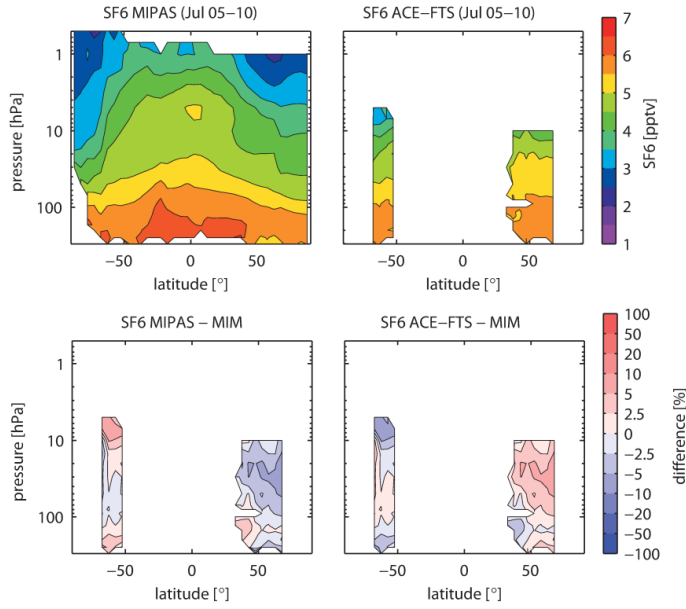


**Figure S13.** Altitude-latitude cross-sections of monthly zonal mean  $\text{SF}_6$  (upper panels) for MIPAS and ACE-FTS and relative differences between the individual instruments and the MIM (lower panels) are shown for January 2005-2010.

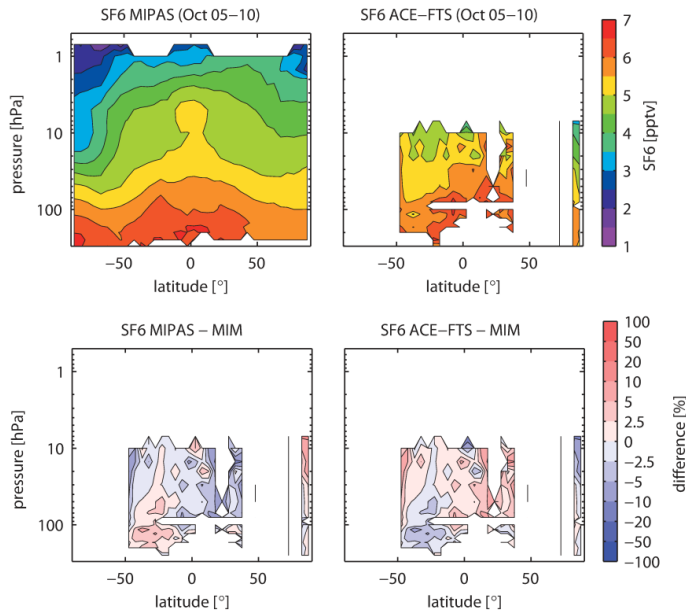


**Figure S14.** Altitude-latitude cross-sections of monthly zonal mean  $\text{SF}_6$  (upper panels) for MIPAS and ACE-FTS and relative differences between the individual instruments and the MIM (lower panels) are shown for April 2005-2010.

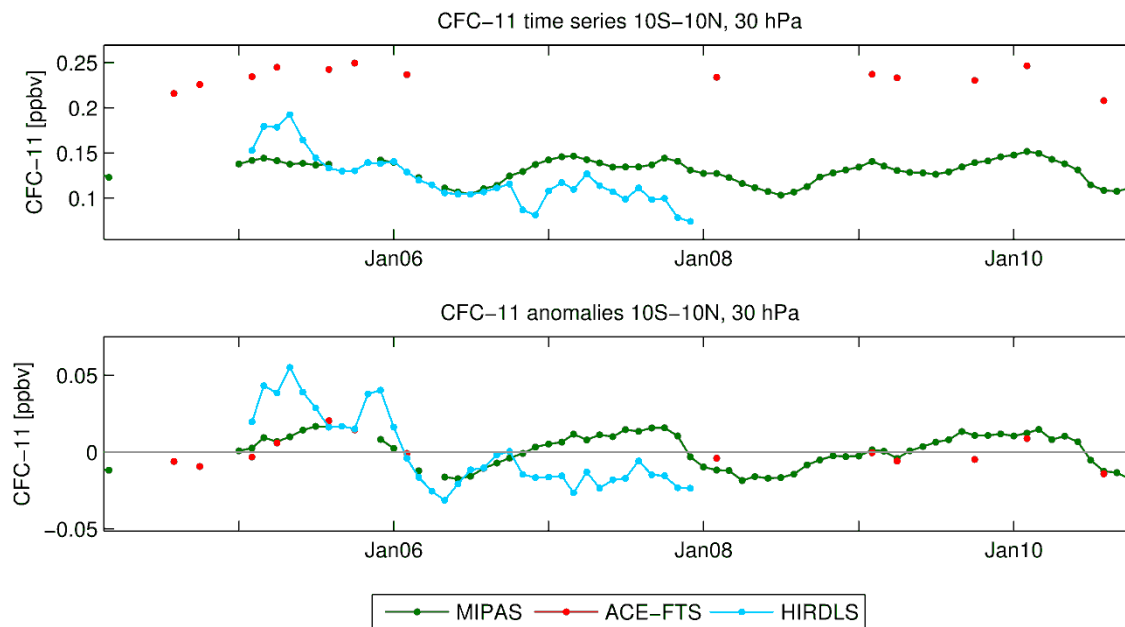




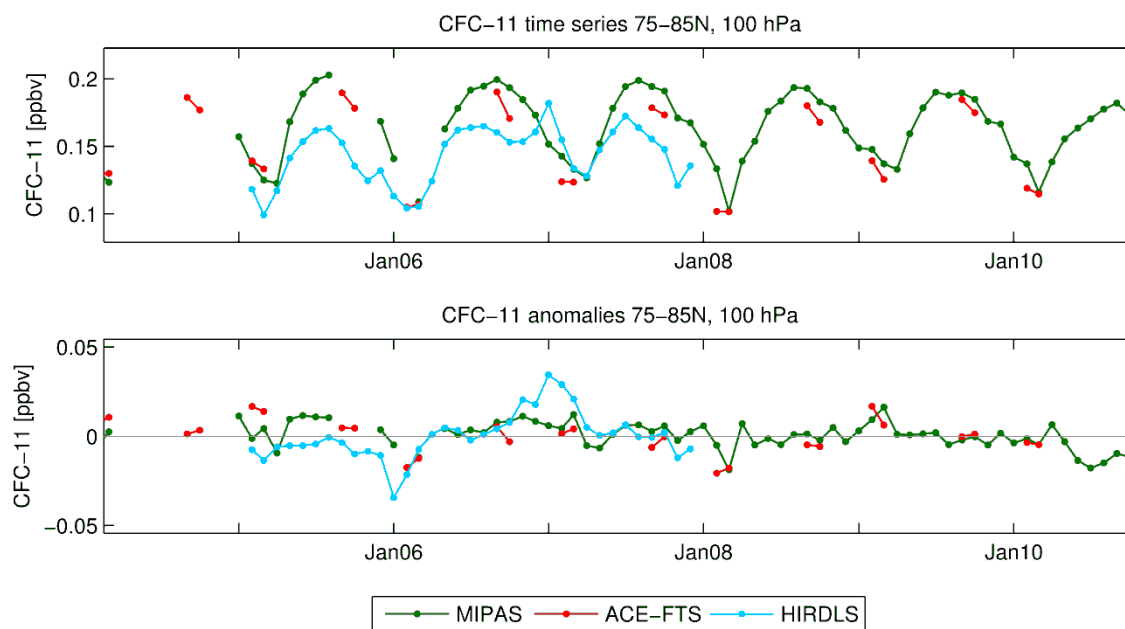
**Figure S15.** Altitude-latitude cross-sections of monthly zonal mean  $\text{SF}_6$  (upper panels) for MIPAS and ACE-FTS and relative differences between the individual instruments and the MIM (lower panels) are shown for July 2005-2010.



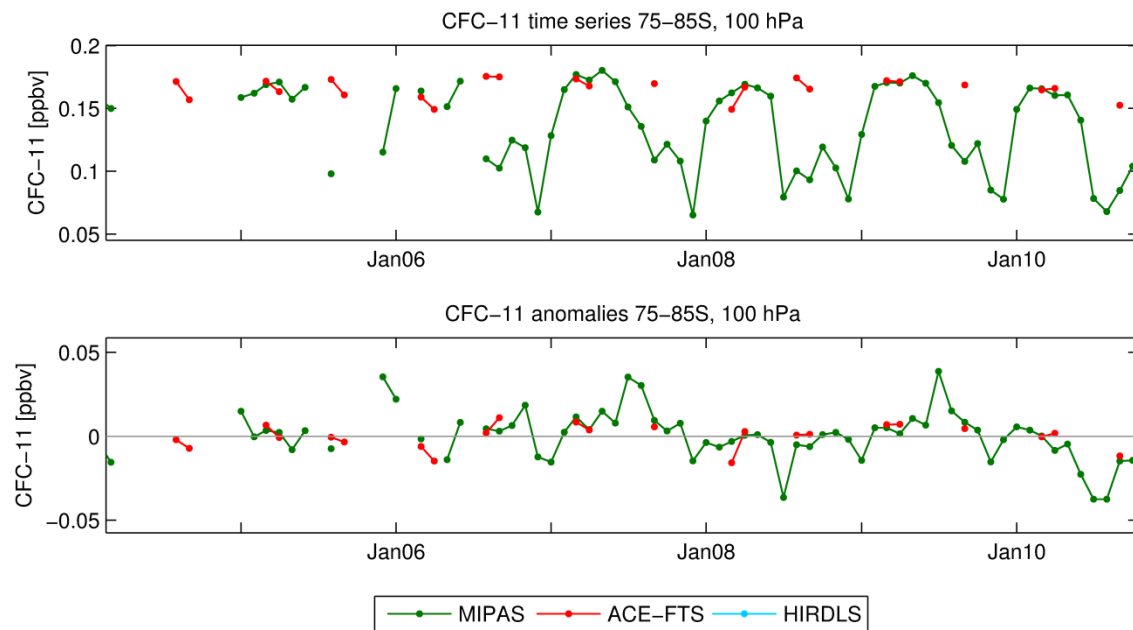
**Figure S16.** Altitude-latitude cross-sections of monthly zonal mean  $\text{SF}_6$  (upper panels) for MIPAS and ACE-FTS and relative differences between the individual instruments and the MIM (lower panels) are shown for October 2005-2010.



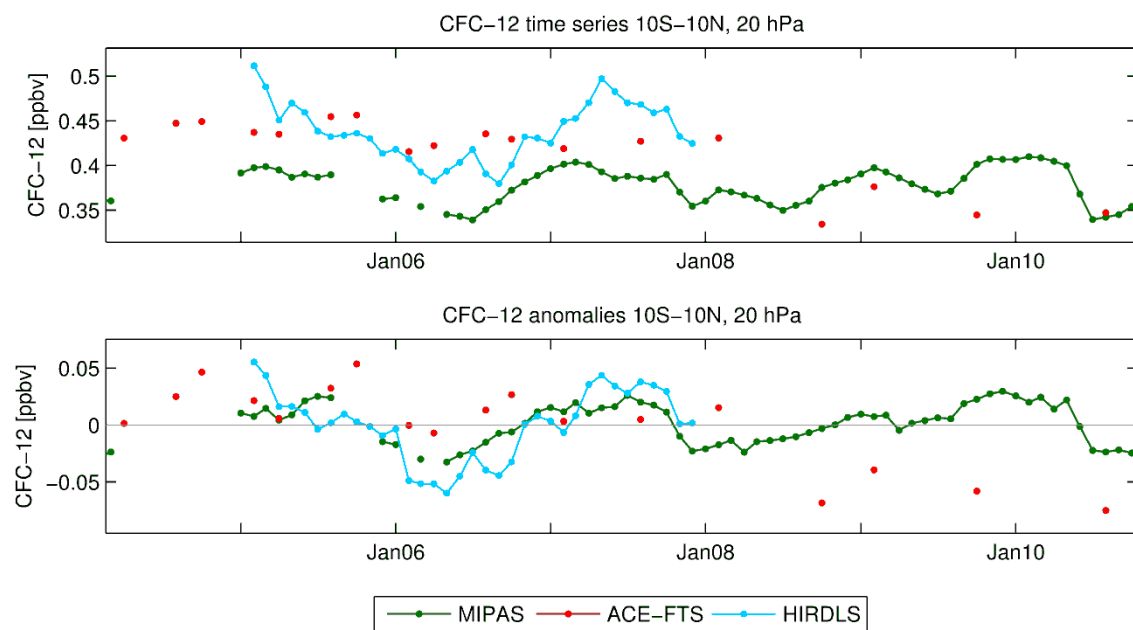
**Figure S17.** Time series of CFC-11 monthly mean values (upper panel) and deseasonalized anomalies (lower panel) between 10°S – 10°N at 20 hPa.



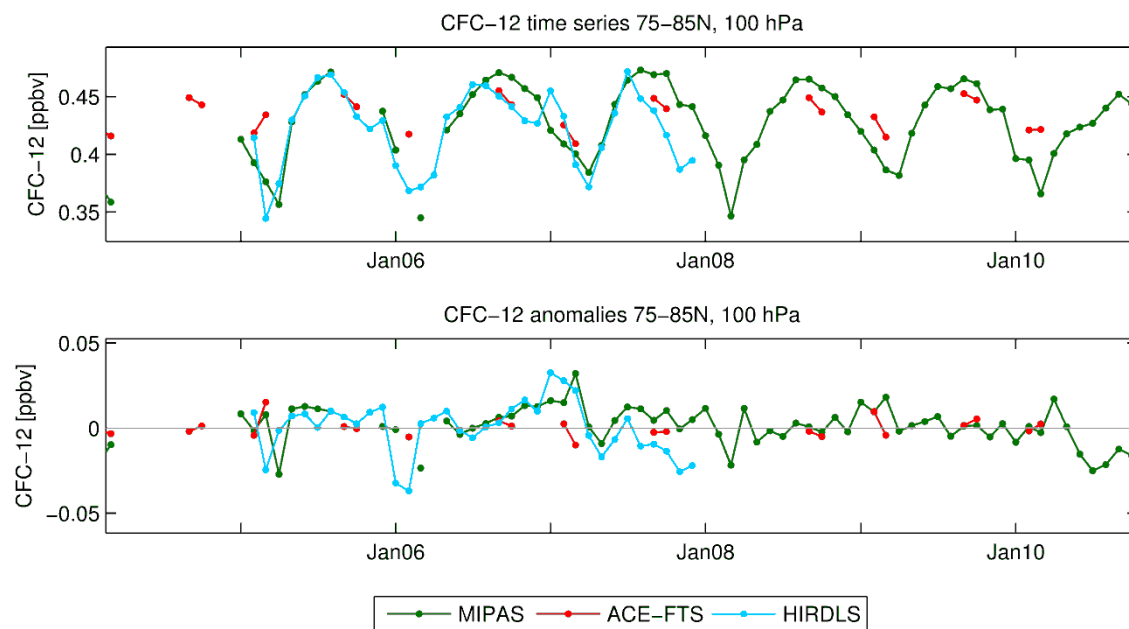
**Figure S18.** Time series of CFC-11 monthly mean values (upper panel) and deseasonalized anomalies (lower panel) between 75°N – 85°N at 100 hPa.



**Figure S19.** Time series of CFC-11 monthly mean values (upper panel) and deseasonalized anomalies (lower panel) between 75°S – 85°S at 100 hPa.



**Figure S20.** Time series of CFC-12 monthly mean values (upper panel) and deseasonalized anomalies (lower panel) between 10°S – 10°N at 20 hPa.



**Figure S21.** Time series of CFC-12 monthly mean values (upper panel) and deseasonalized anomalies (lower panel) between 75°N – 85°N at 100 hPa.