

Supplement of Atmos. Chem. Phys., 19, 9253–9268, 2019  
<https://doi.org/10.5194/acp-19-9253-2019-supplement>  
© Author(s) 2019. This work is distributed under  
the Creative Commons Attribution 4.0 License.



*Supplement of*

## **Influence of Arctic stratospheric ozone on surface climate in CCM1 models**

**Ohad Harari et al.**

*Correspondence to:* Chaim I. Garfinkel ([chaim.garfinkel@mail.huji.ac.il](mailto:chaim.garfinkel@mail.huji.ac.il))

The copyright of individual parts of the supplement might differ from the CC BY 4.0 License.

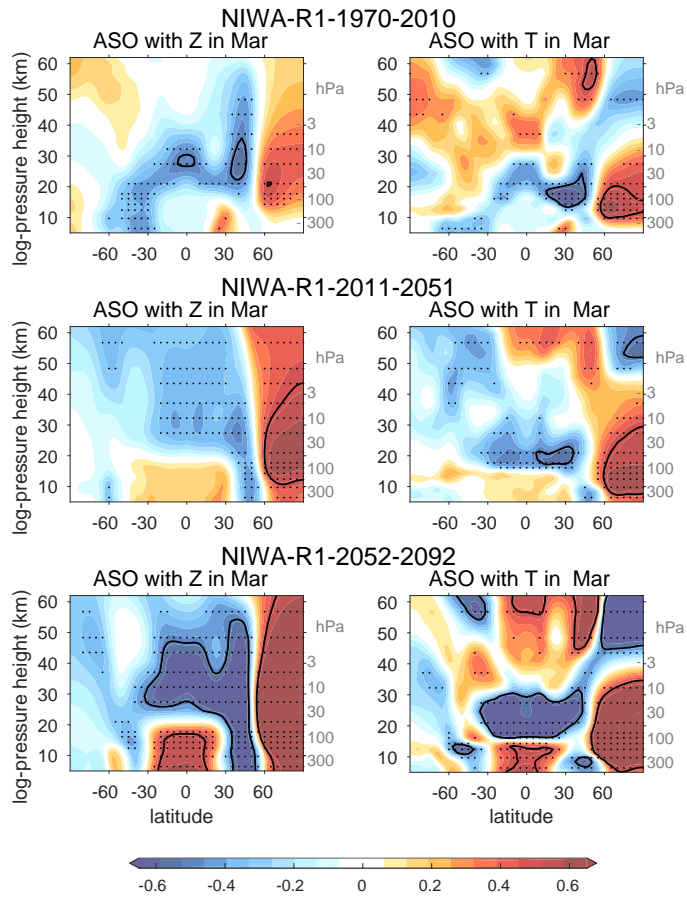
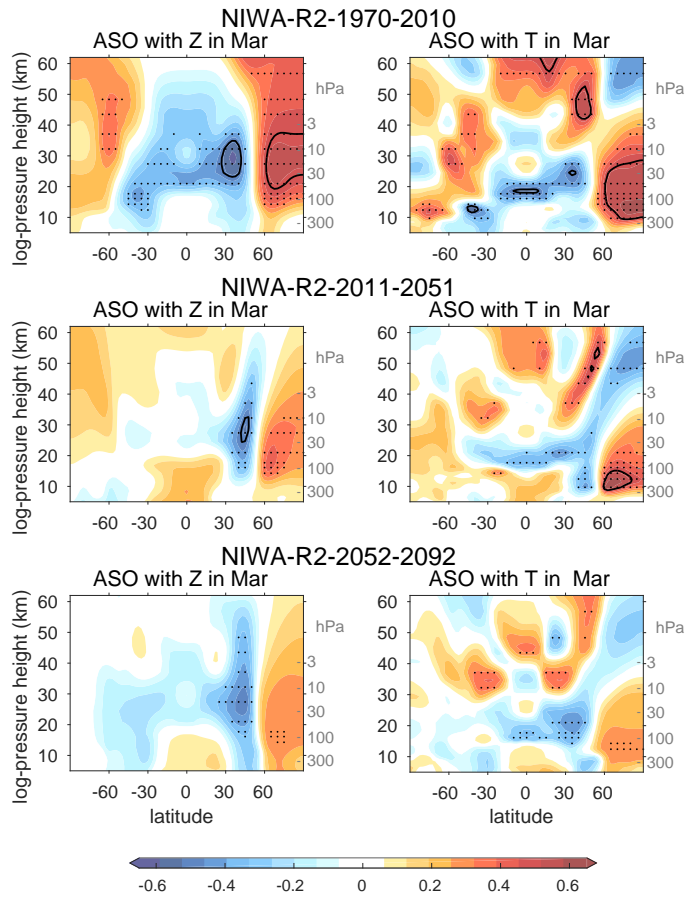


Fig. S 1. As in figure 2 of main body, but for Niwa run #1

## 1 Influence of Arctic Stratospheric Ozone on Surface Climate in CCMI models



**Fig. S 2.** As in figure 2 of main body, but for Niwa run #2

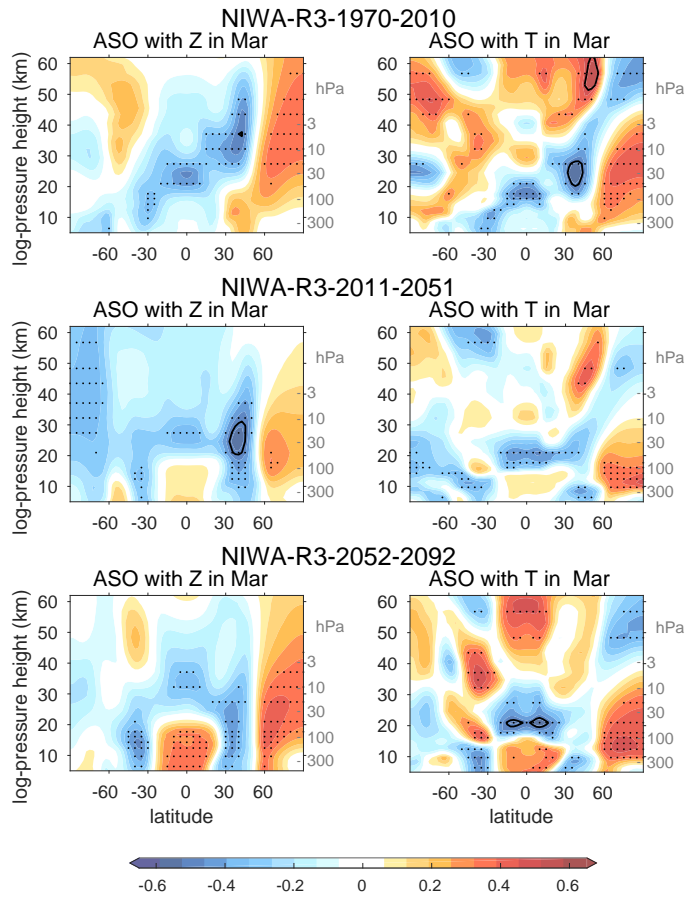


Fig. S 3. As in figure 2 of main body, but for Niwa run #3



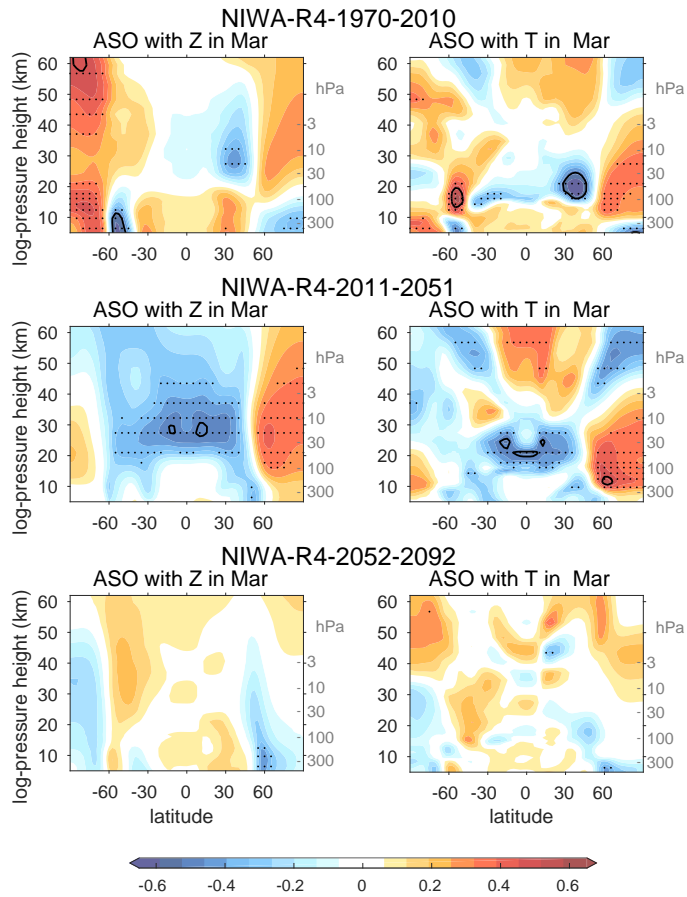


Fig. S 4. As in figure 2 of main body, but for Niwa run #4

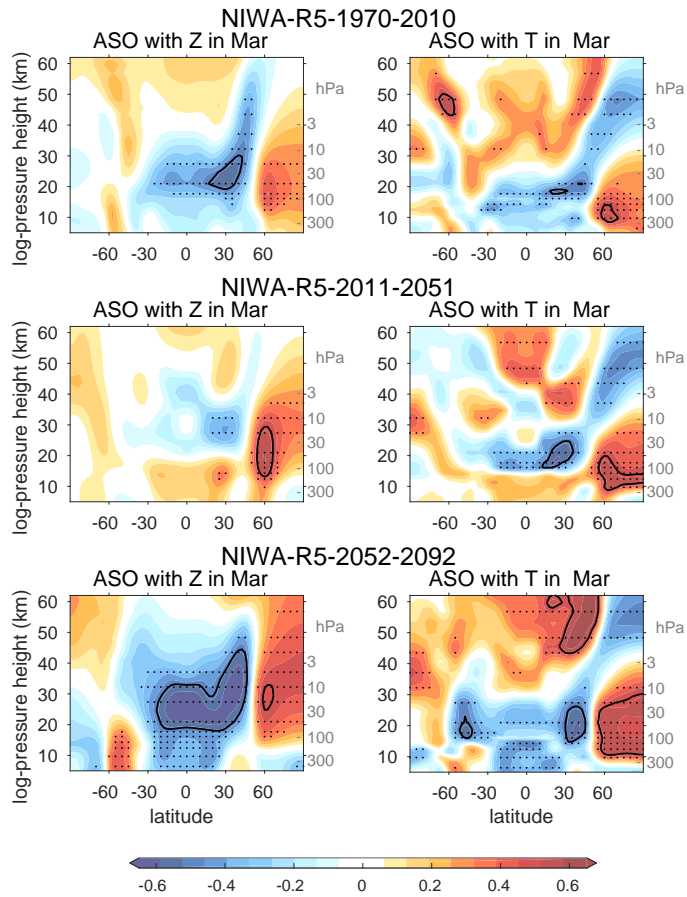


Fig. S 5. As in figure 2 of main body, but for Niwa run #5

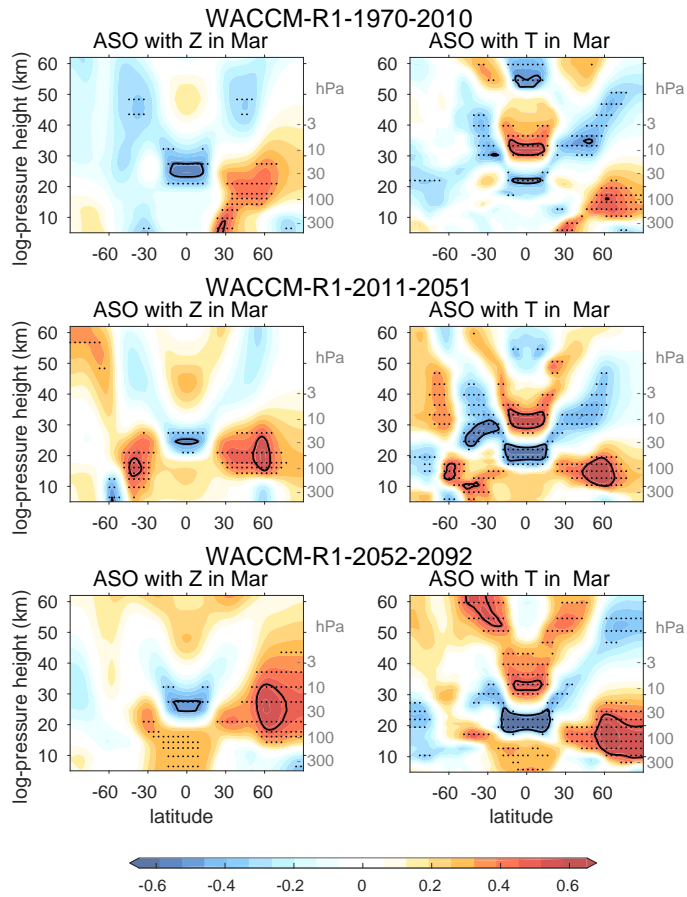


Fig. S 6. As in figure 2 of main body, but for NCAR-WACCM run #1

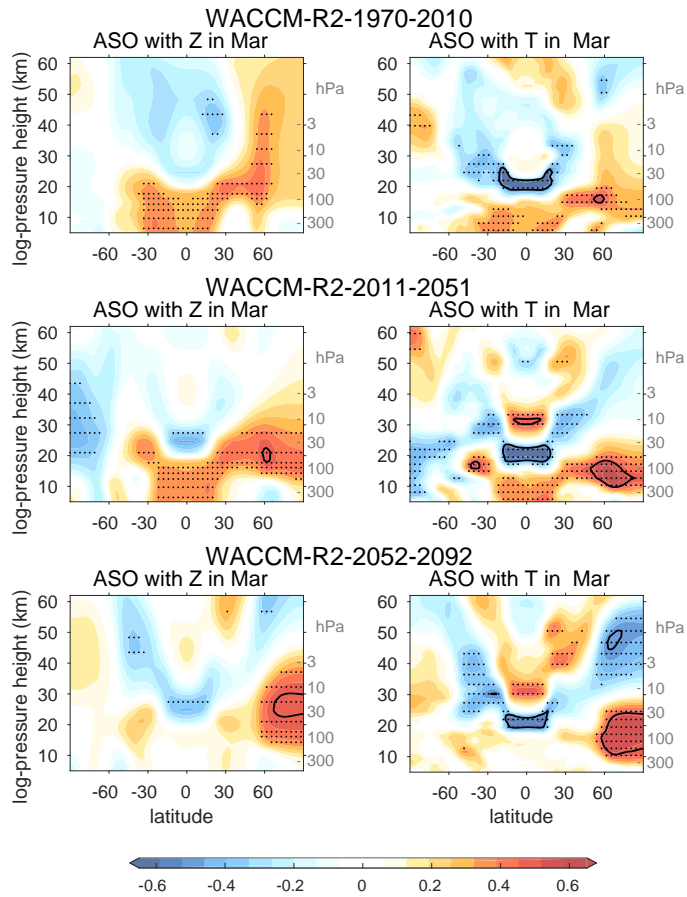


Fig. S 7. As in figure 2 of main body, but for NCAR-WACCM run #2

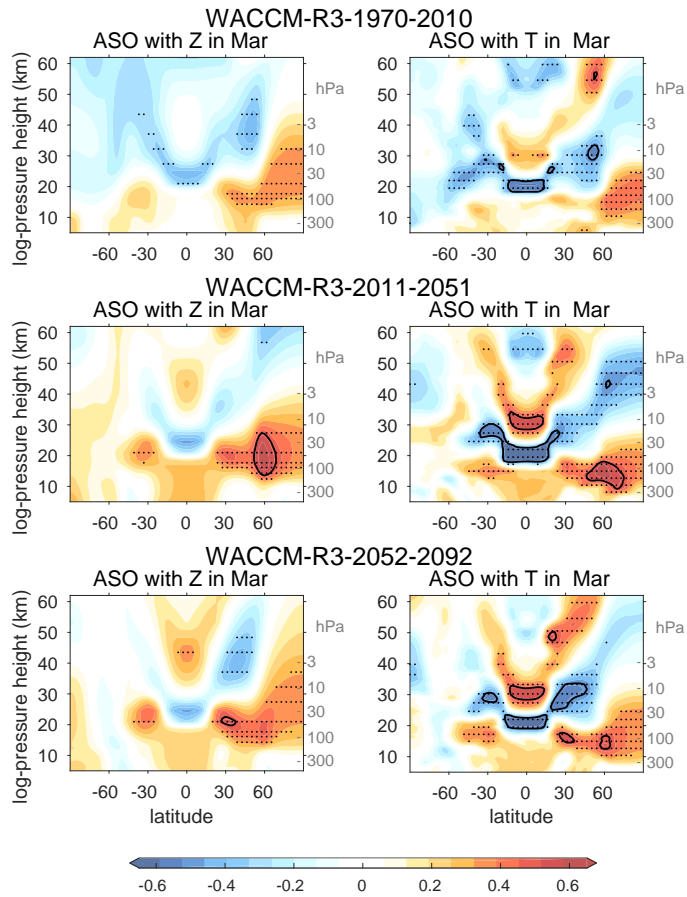
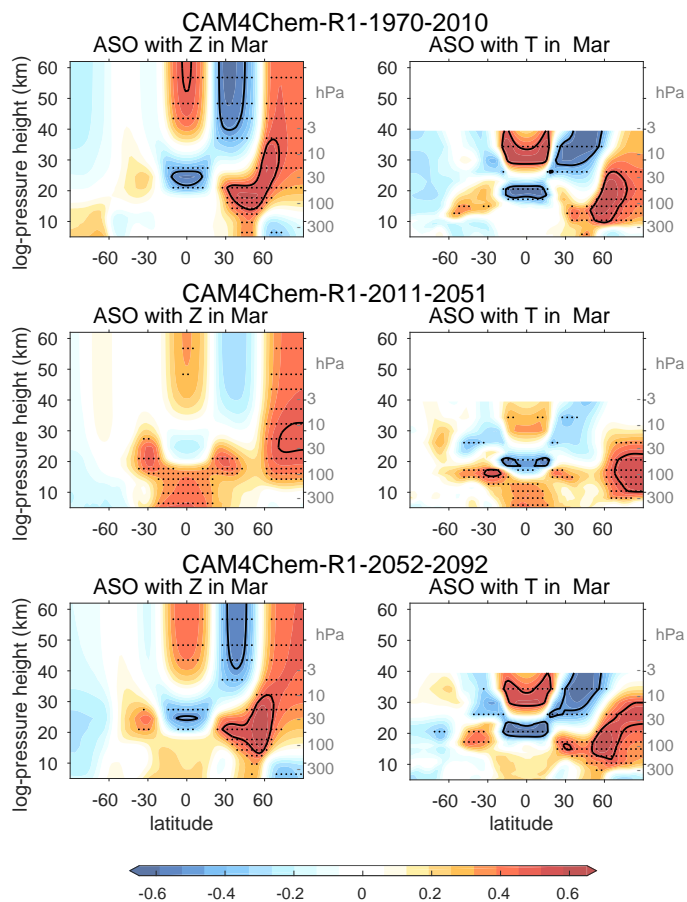


Fig. S 8. As in figure 2 of main body, but for NCAR-WACCM run #3



**Fig. S 9.** As in figure 2 of main body, but for NCAR-CAM4Chem run #1

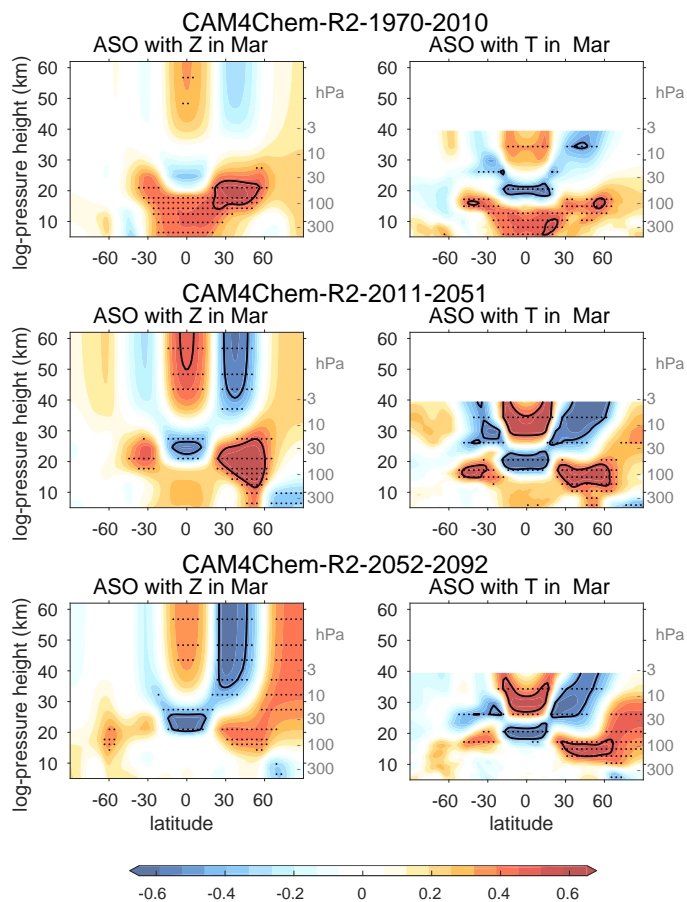


Fig. S 10. As in figure 2 of main body, but for NCAR-CAM4Chem run #2

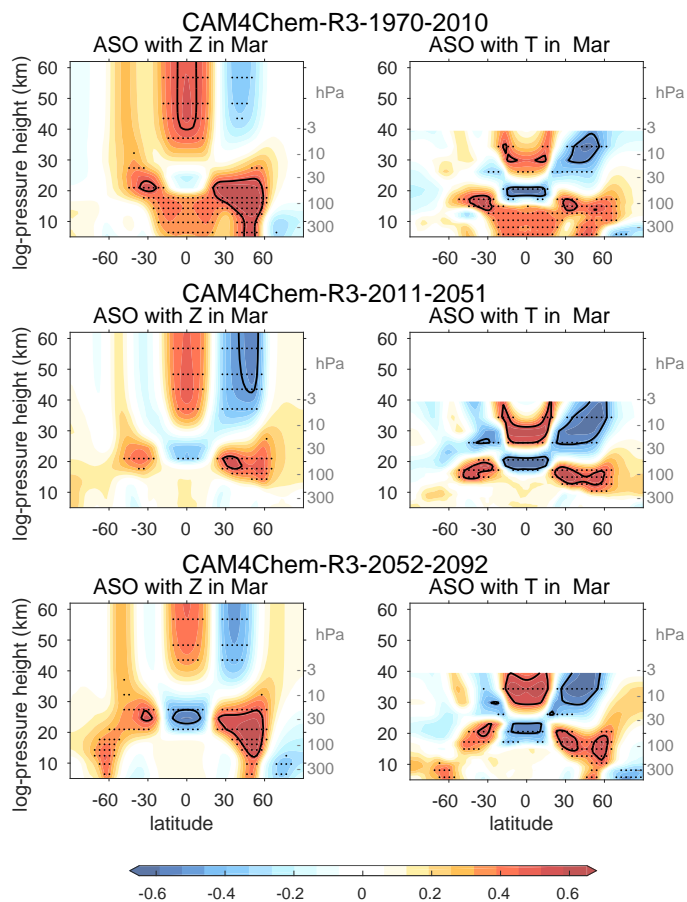
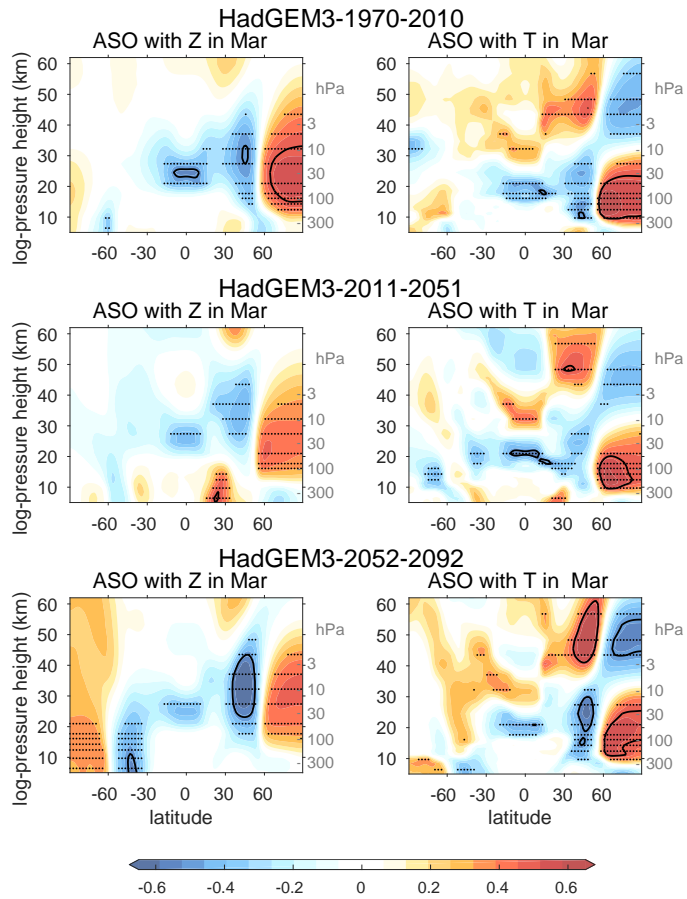
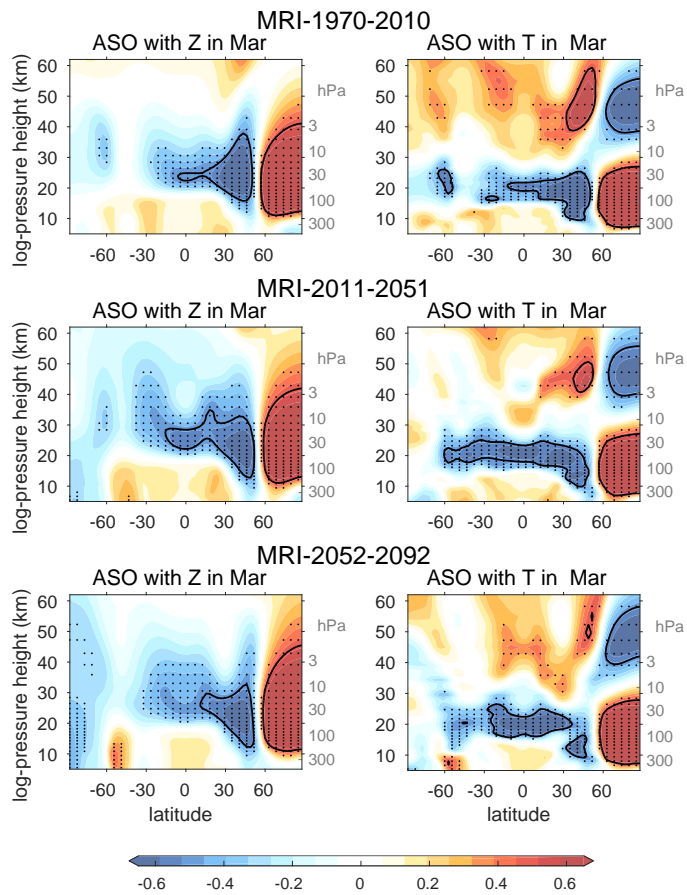


Fig. S 11. As in figure 2 of main body, but for NCAR-CAM4Chem run #3

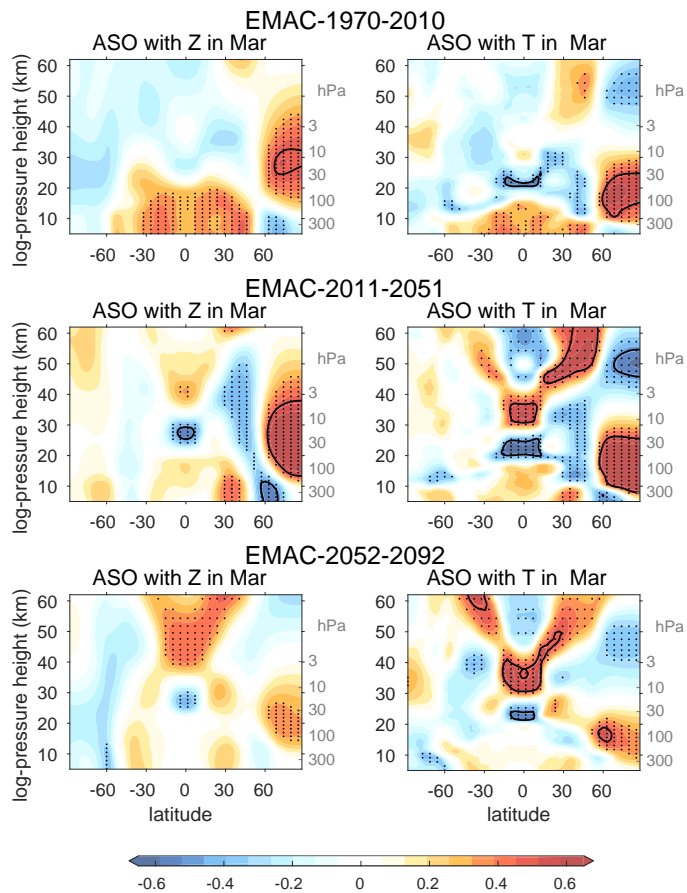




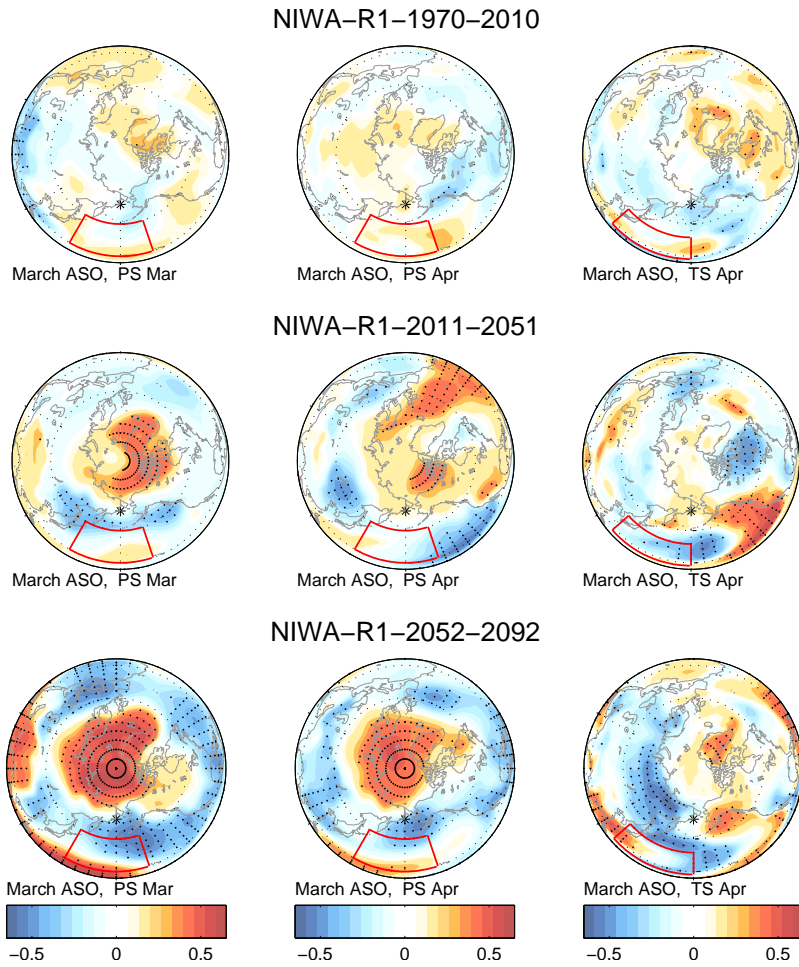
**Fig. S 12.** As in figure 2 of main body, but for HadGEM



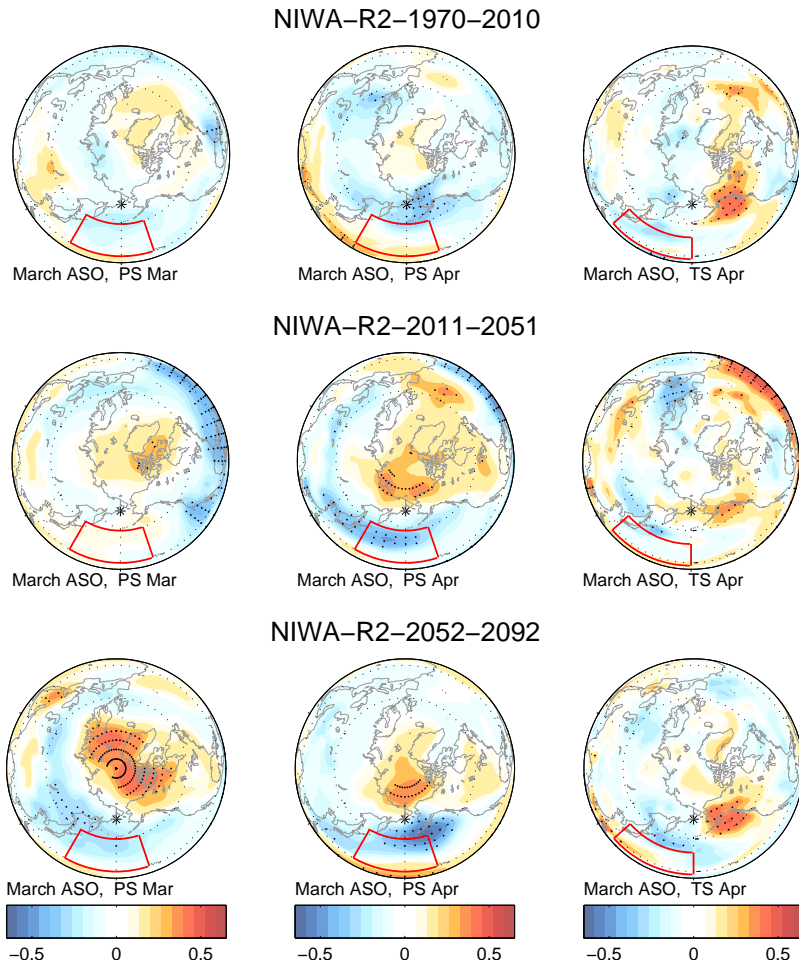
**Fig. S 13.** As in figure 2 of main body, but for MRI



**Fig. S 14.** As in figure 2 of main body, but for EMAC



**Fig. S 15.** As in figure 5 of main body, but for Niwa run #1



**Fig. S 16.** As in figure 5 of main body, but for Niwa run #2

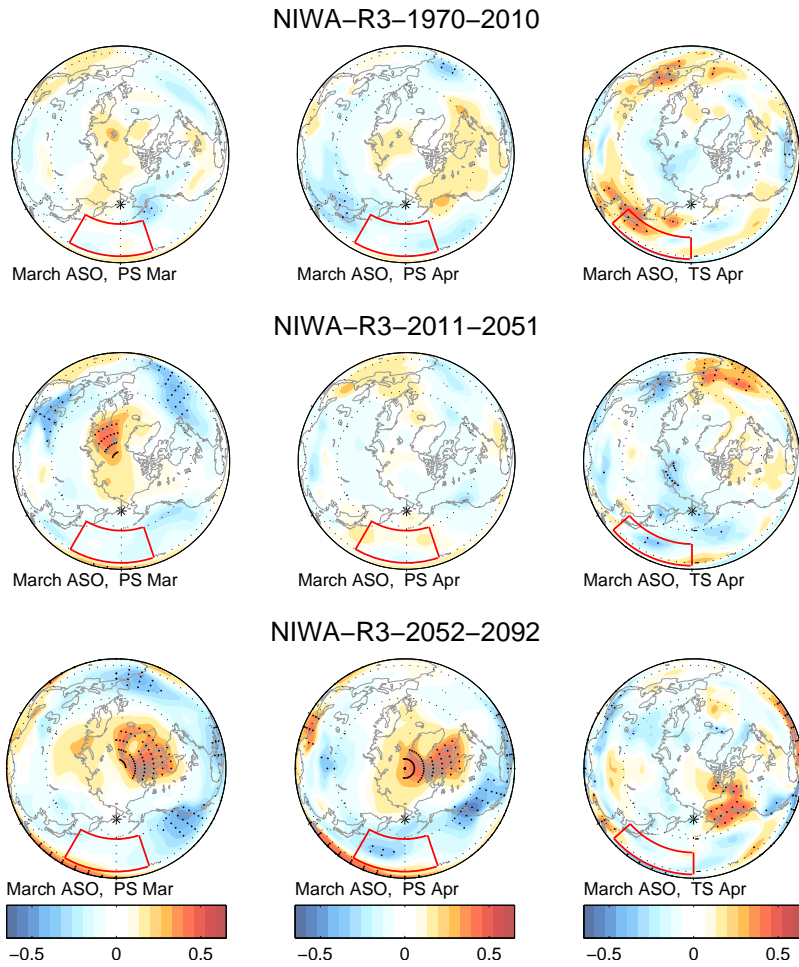
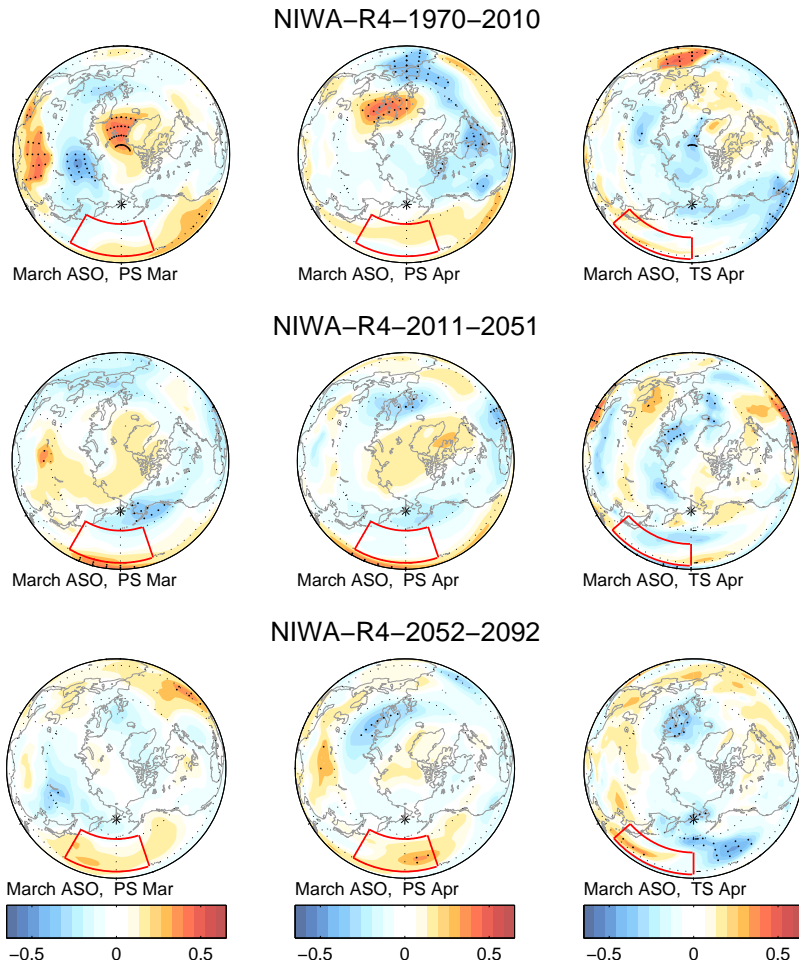
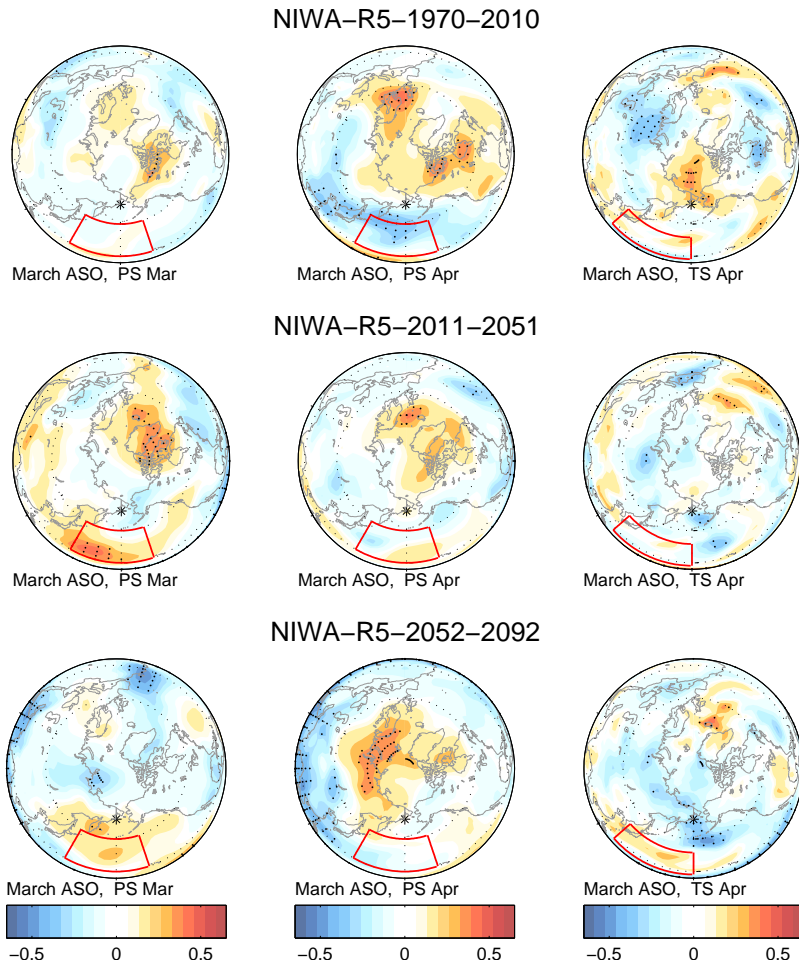


Fig. S 17. As in figure 5 of main body, but for Niwa run #3

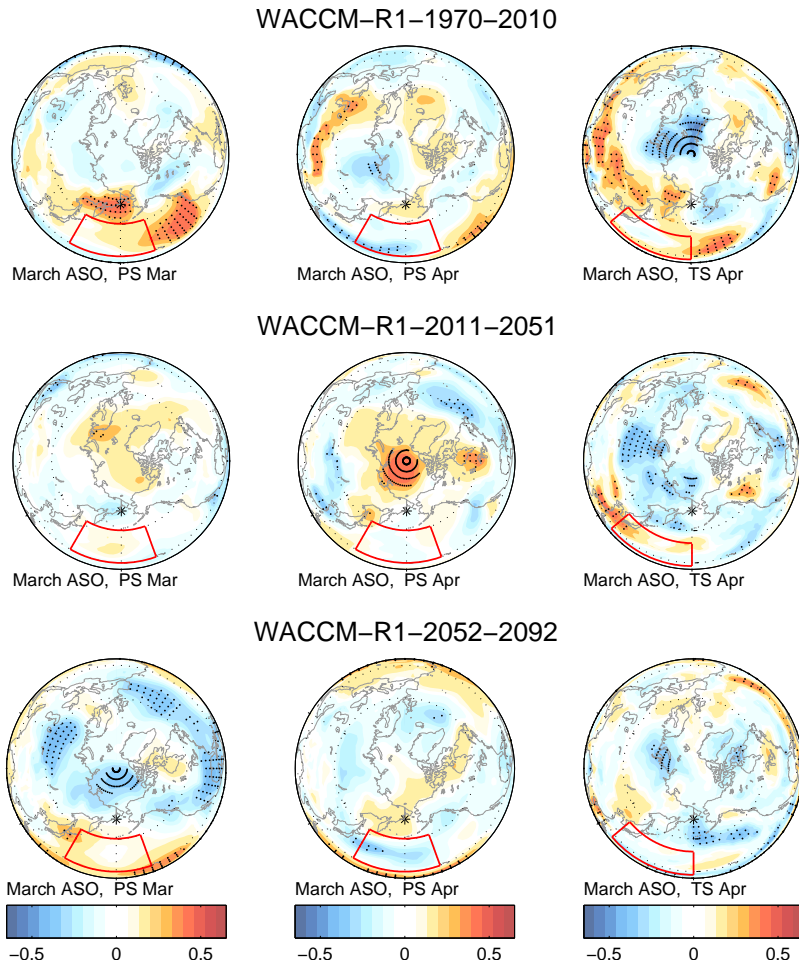


**Fig. S 18.** As in figure 5 of main body, but for Niwa run #4

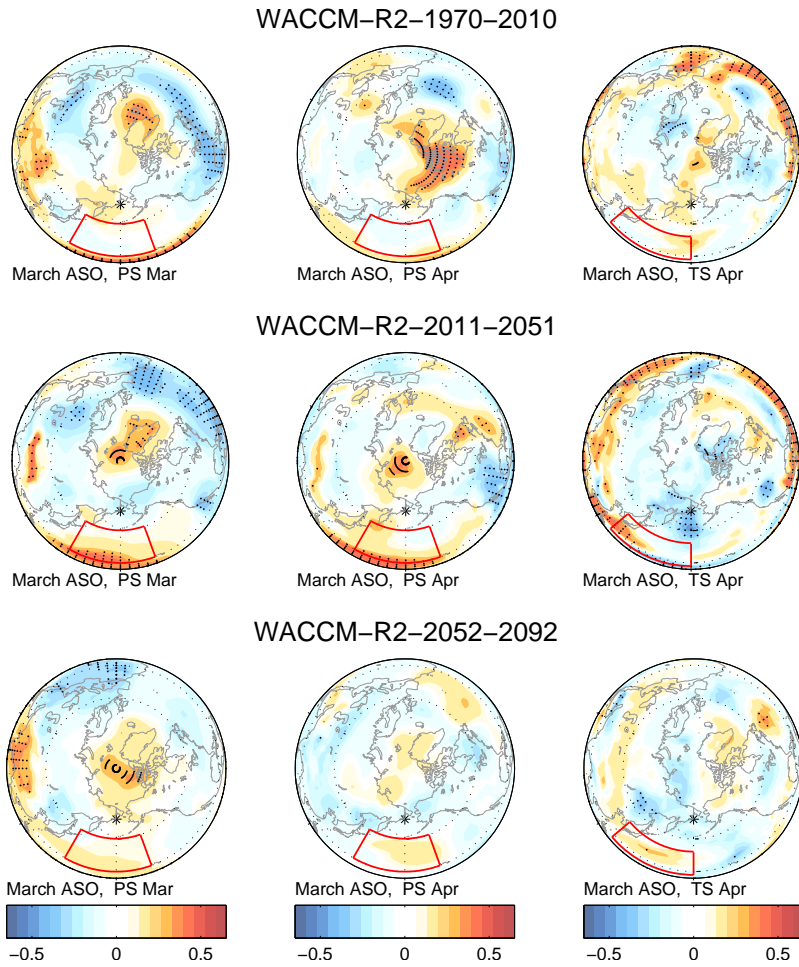


**Fig. S 19.** As in figure 5 of main body, but for Niwa run #5

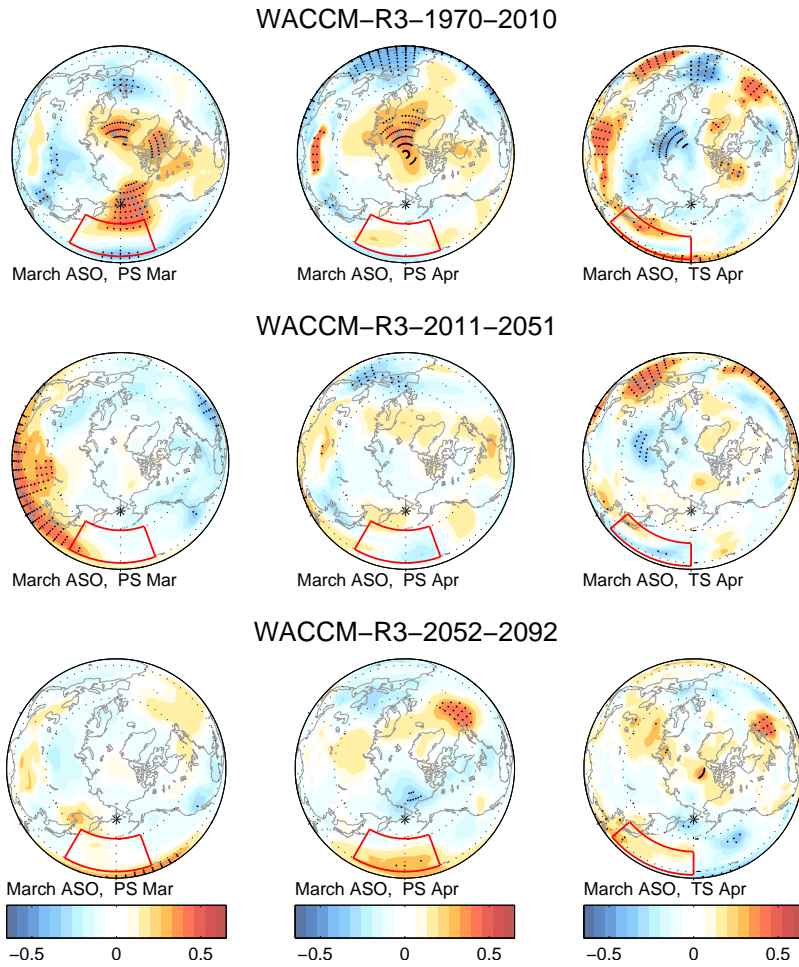




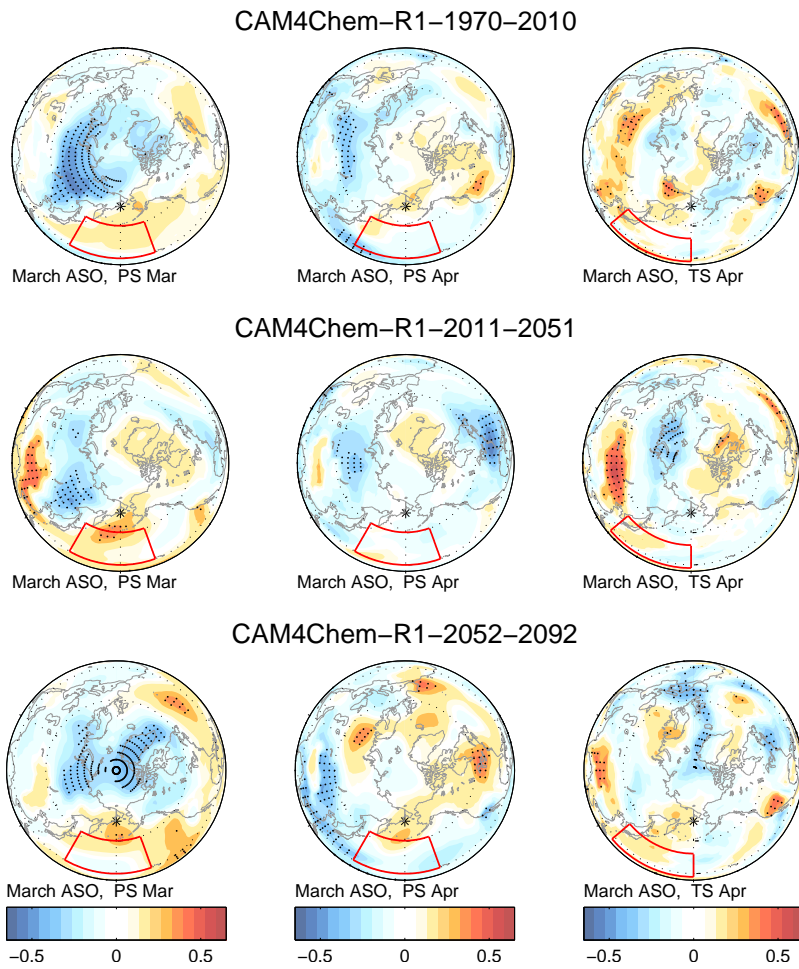
**Fig. S 20.** As in figure 5 of main body, but for NCAR-WACCM run #1



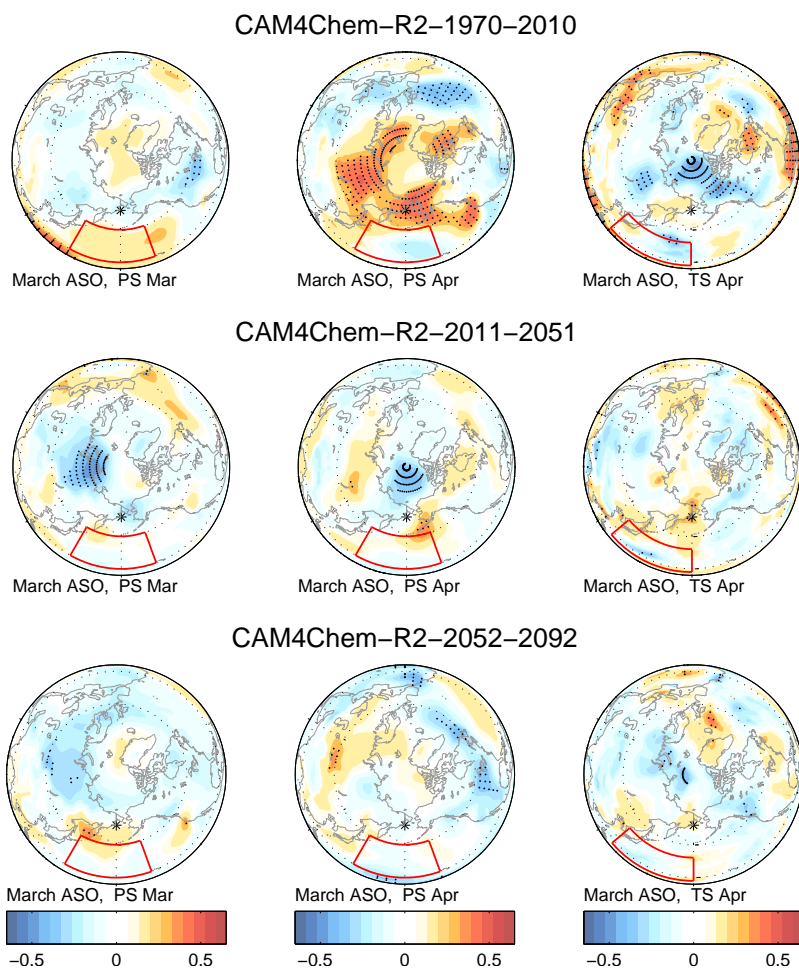
**Fig. S 21.** As in figure 5 of main body, but for NCAR-WACCM run #2



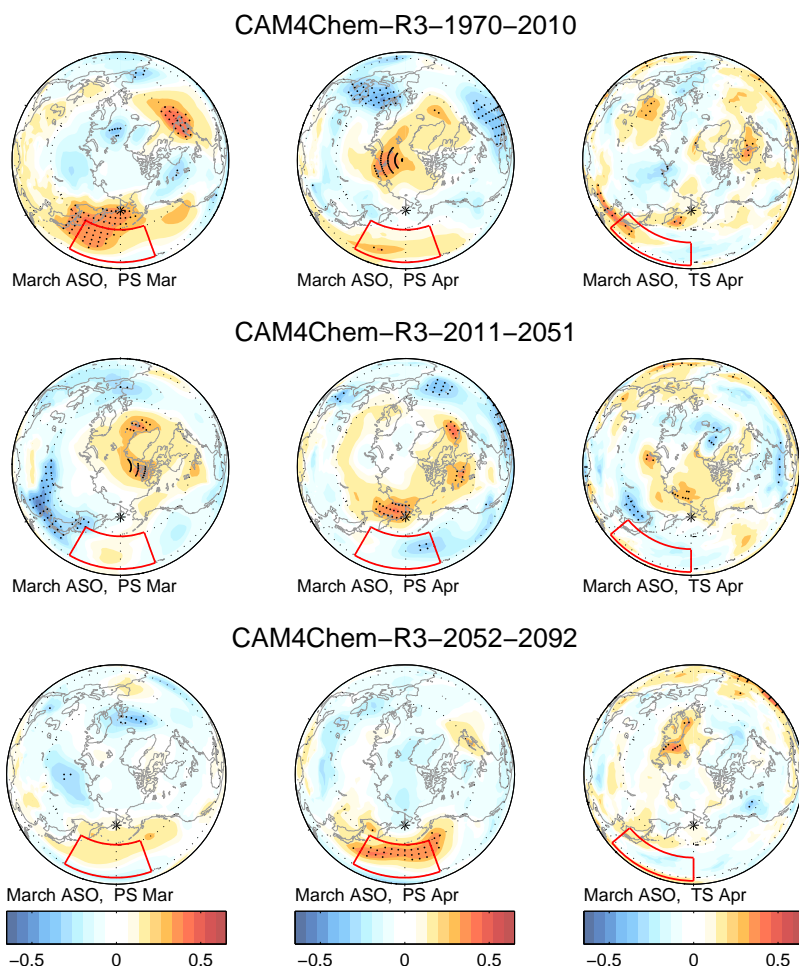
**Fig. S 22.** As in figure 5 of main body, but for NCAR-WACCM run #3



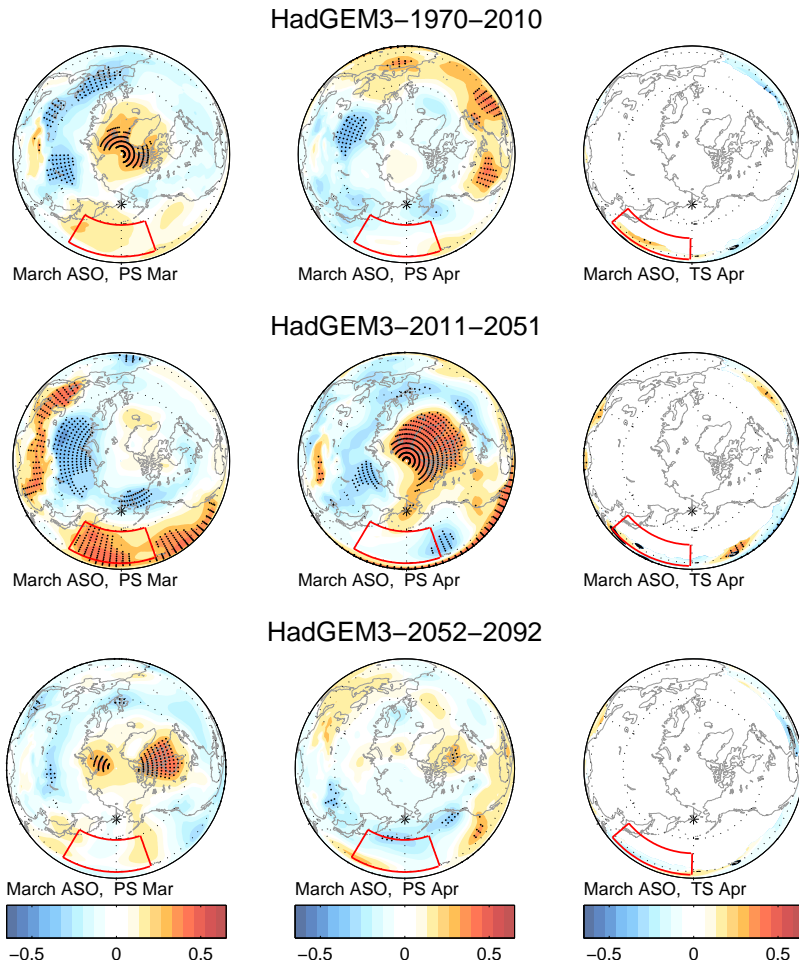
**Fig. S 23.** As in figure 5 of main body, but for NCAR-CAM4Chem run #1



**Fig. S 24.** As in figure 5 of main body, but for NCAR-CAM4Chem run #2

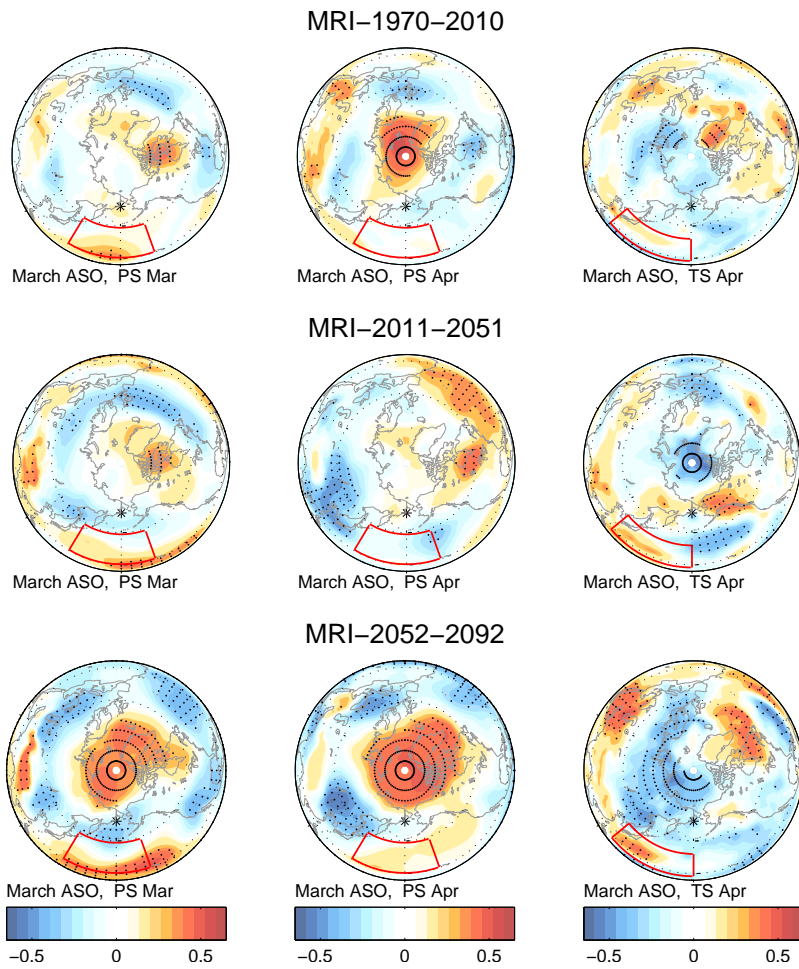


**Fig. S 25.** As in figure 5 of main body, but for NCAR-CAM4Chem run #3



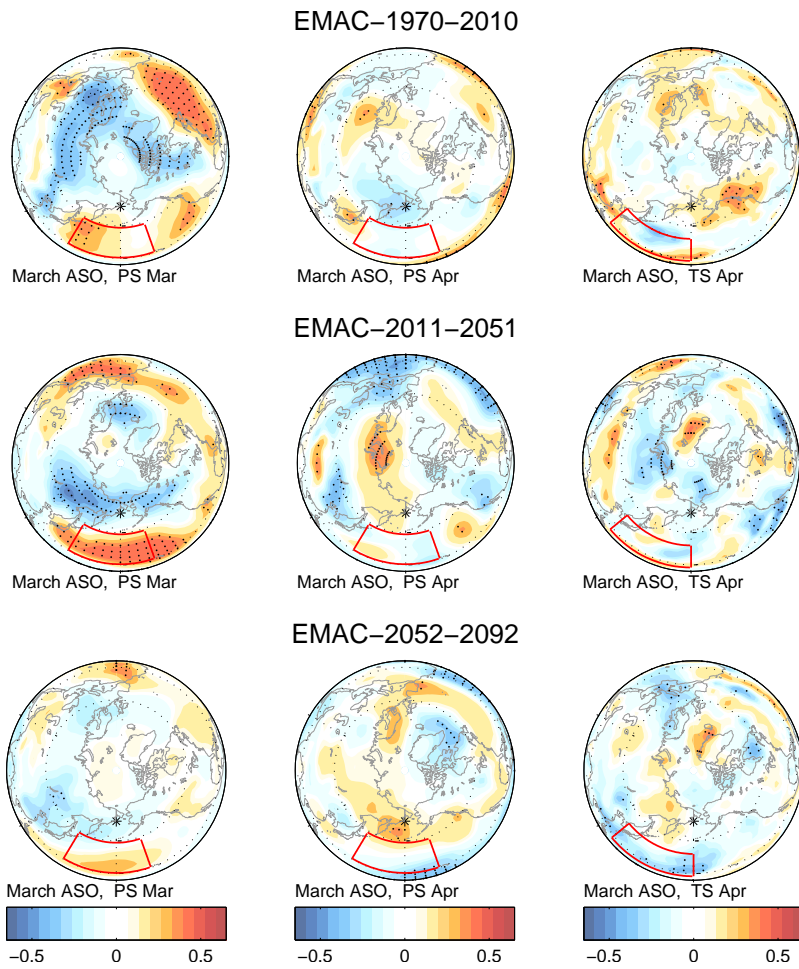
**Fig. S 26.** As in figure 5 of main body, but for HadGEM





**Fig. S 27.** As in figure 5 of main body, but for MRI





**Fig. S 28.** As in figure 5 of main body, but for EMAC

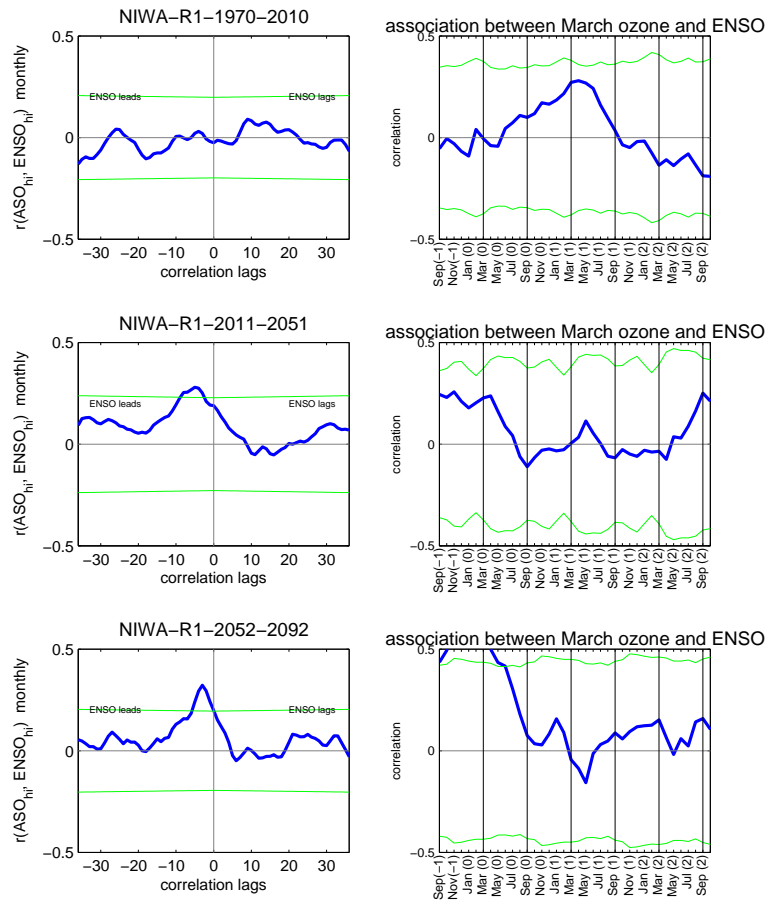


Fig. S 29. As in figure 7 of main body, but for Niwa run #1

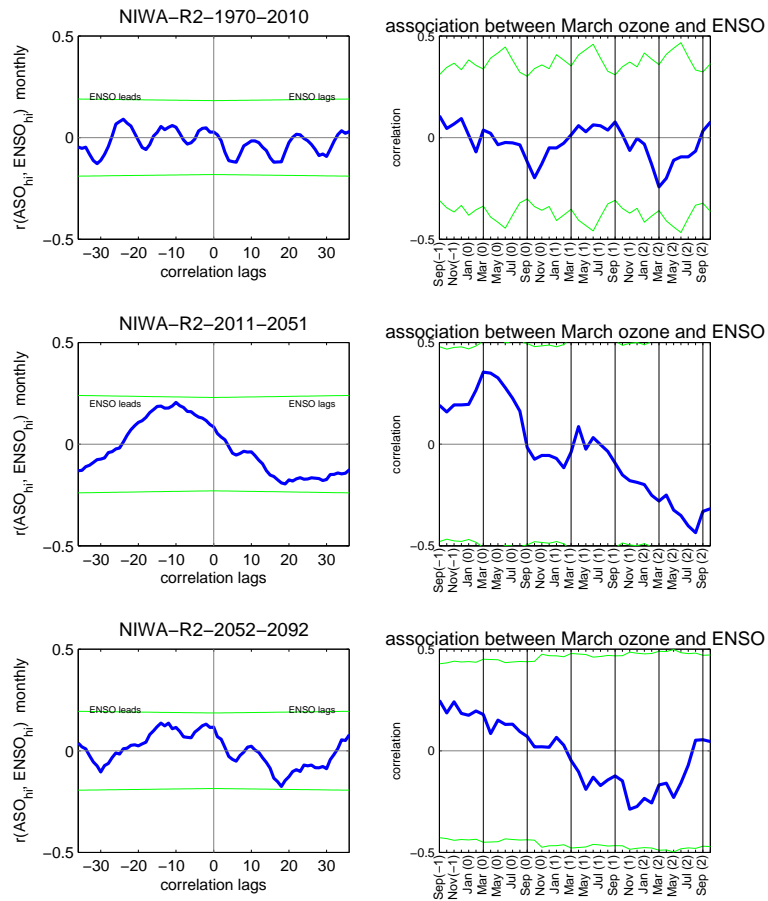
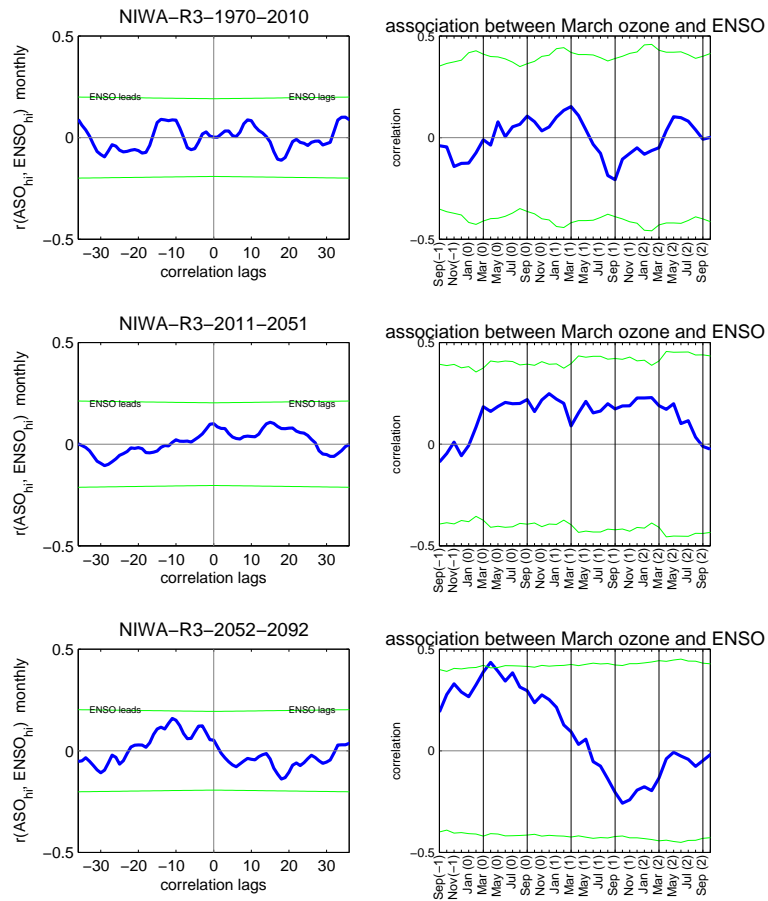


Fig. S 30. As in figure 7 of main body, but for Niwa run #2



**Fig. S 31.** As in figure 7 of main body, but for Niwa run #3

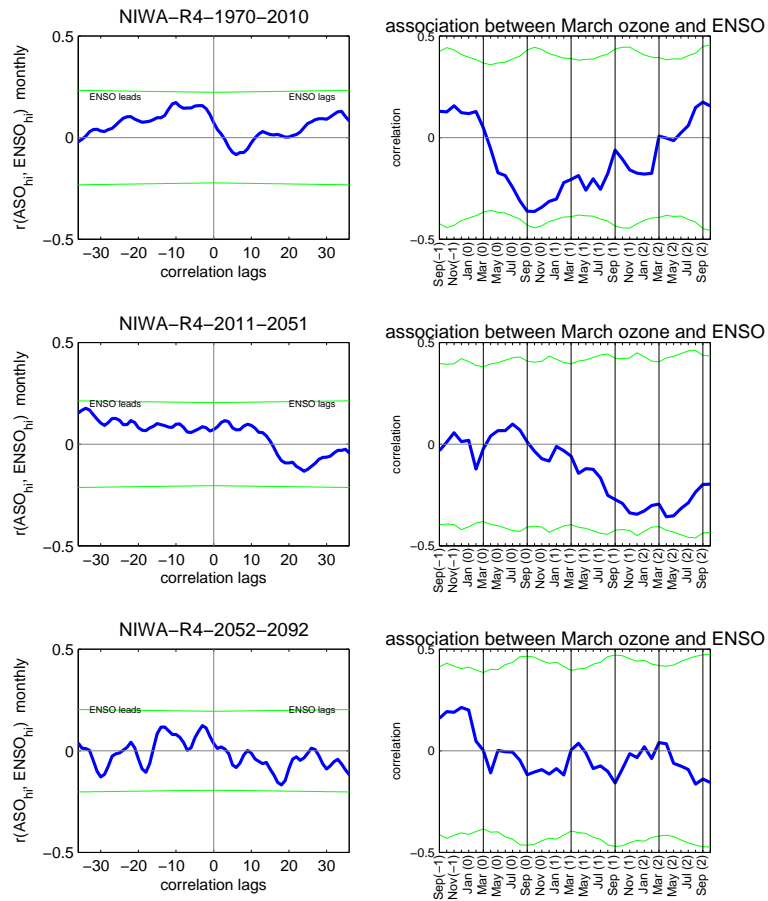


Fig. S 32. As in figure 7 of main body, but for Niwa run #4

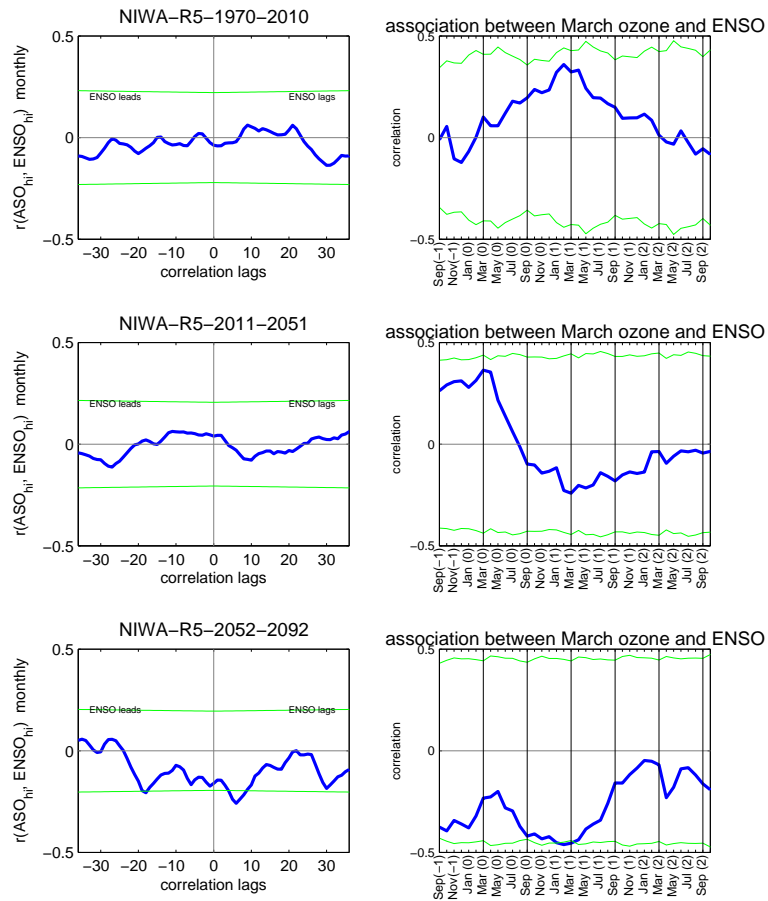


Fig. S 33. As in figure 7 of main body, but for Niwa run #5

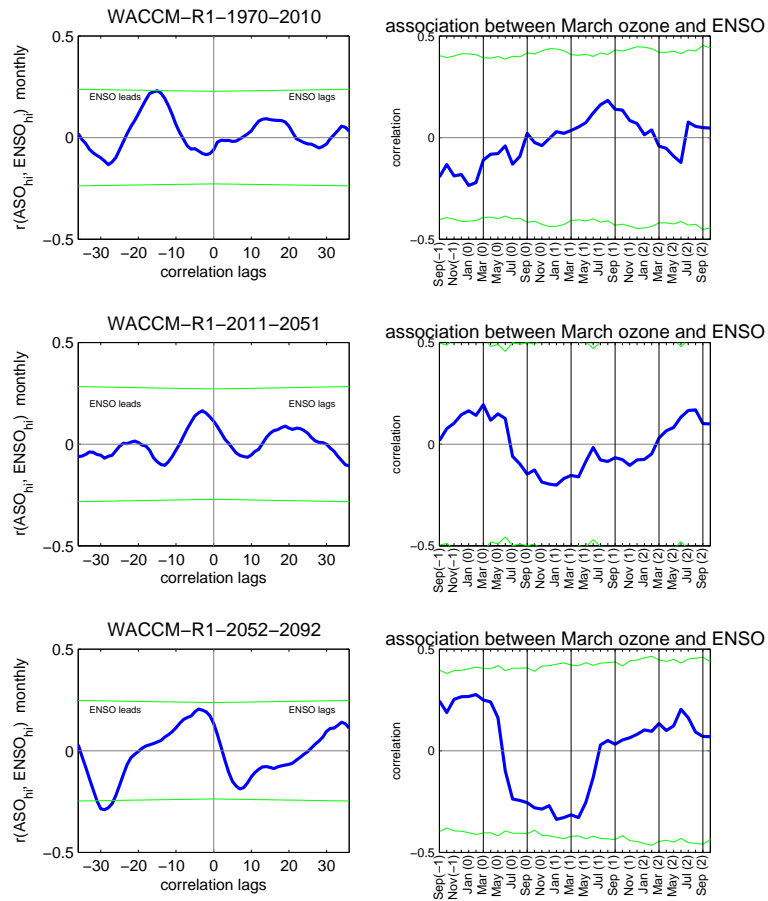


Fig. S 34. As in figure 7 of main body, but for NCAR-WACCM run #1

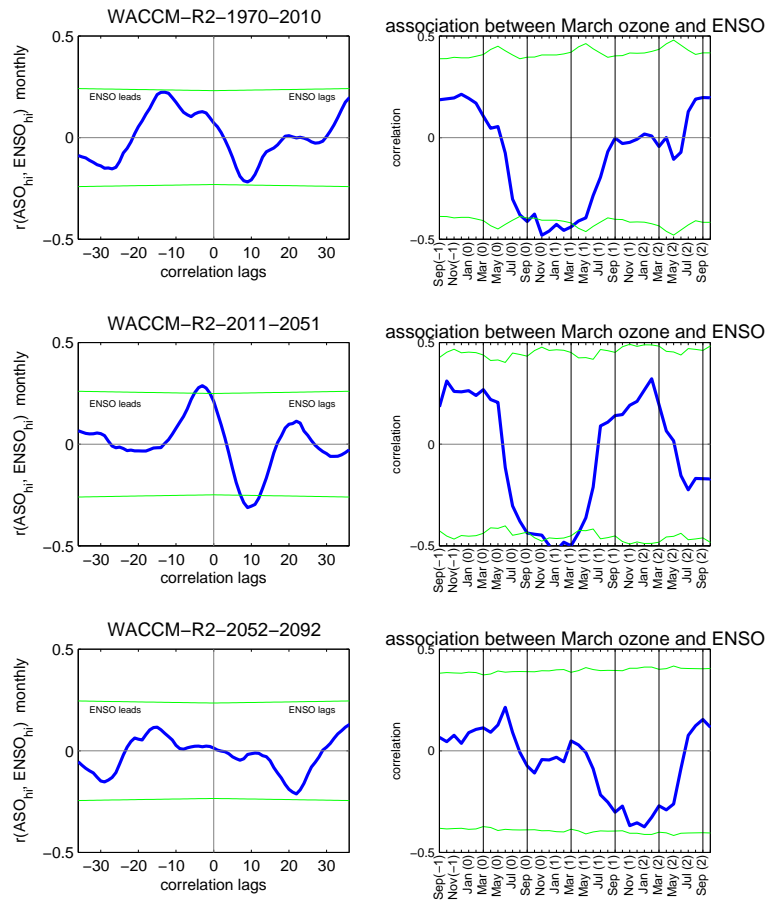
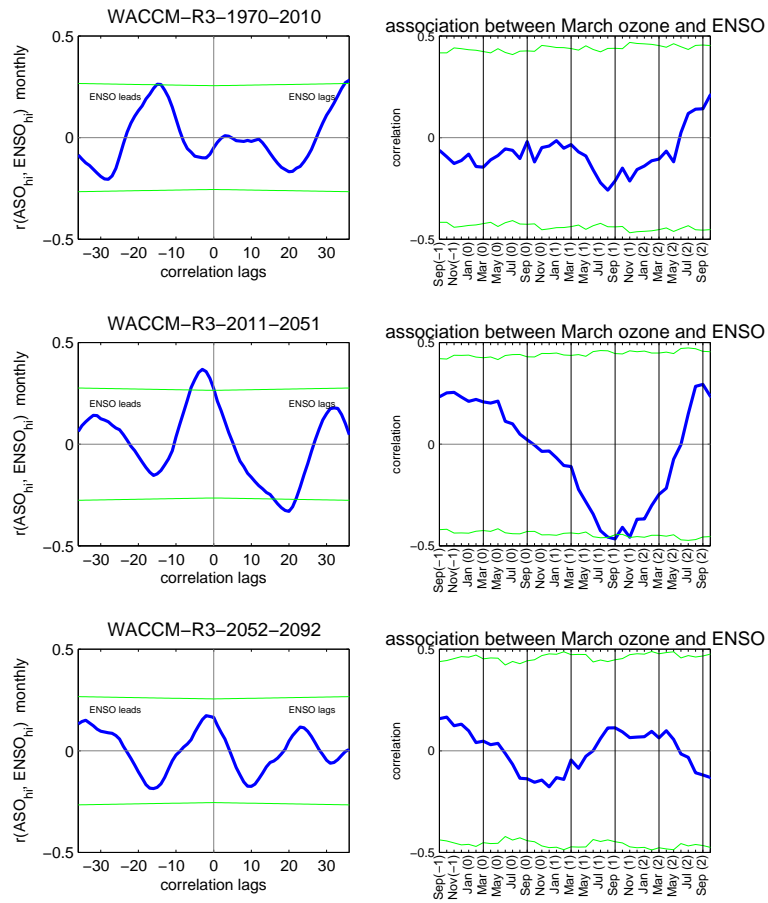
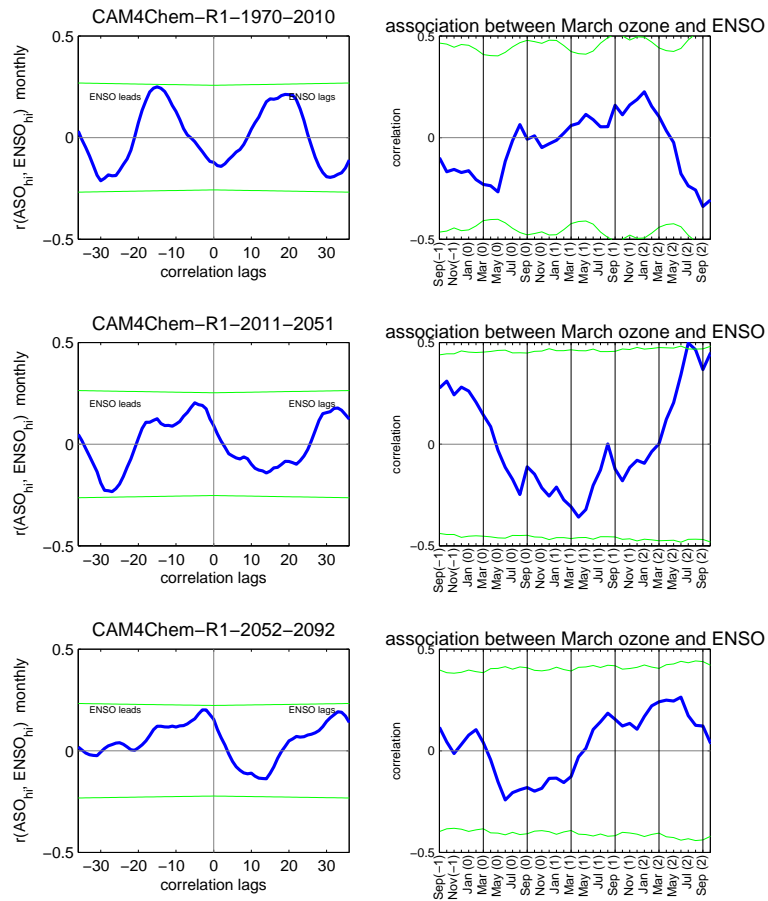


Fig. S 35. As in figure 7 of main body, but for NCAR-WACCM run #2

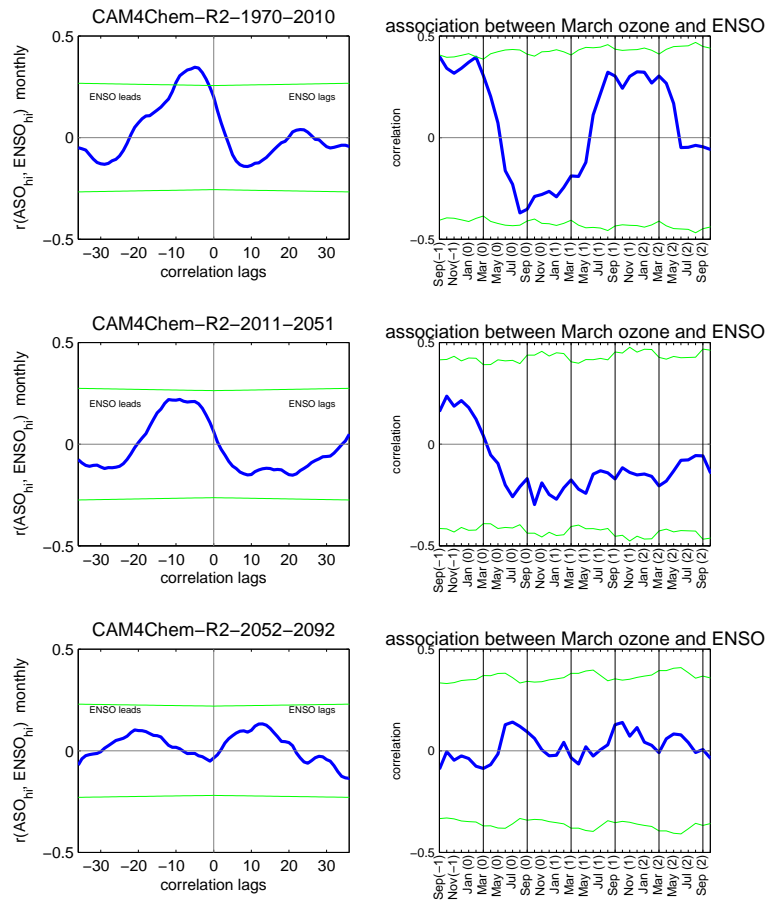




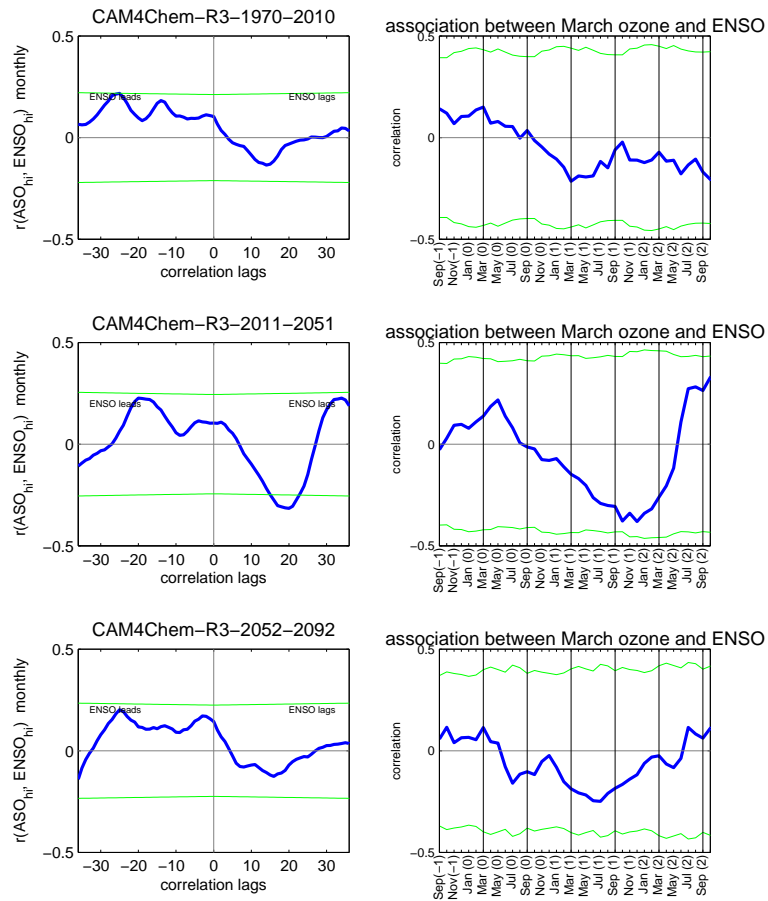
**Fig. S 36.** As in figure 7 of main body, but for NCAR-WACCM run #3



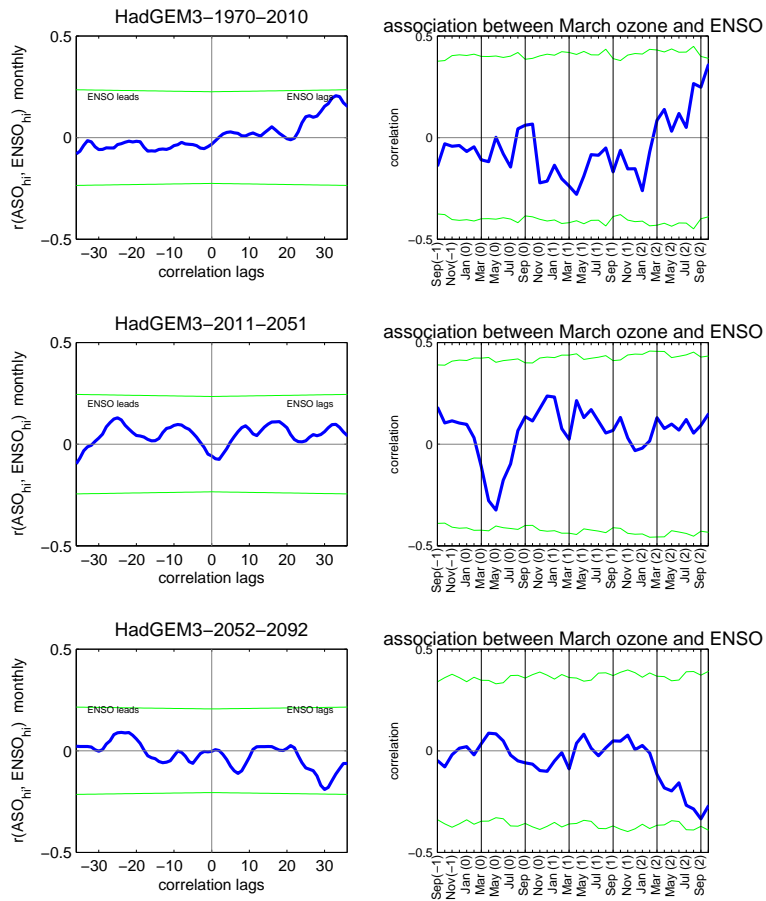
**Fig. S 37.** As in figure 7 of main body, but for NCAR-CAM4Chem run #1



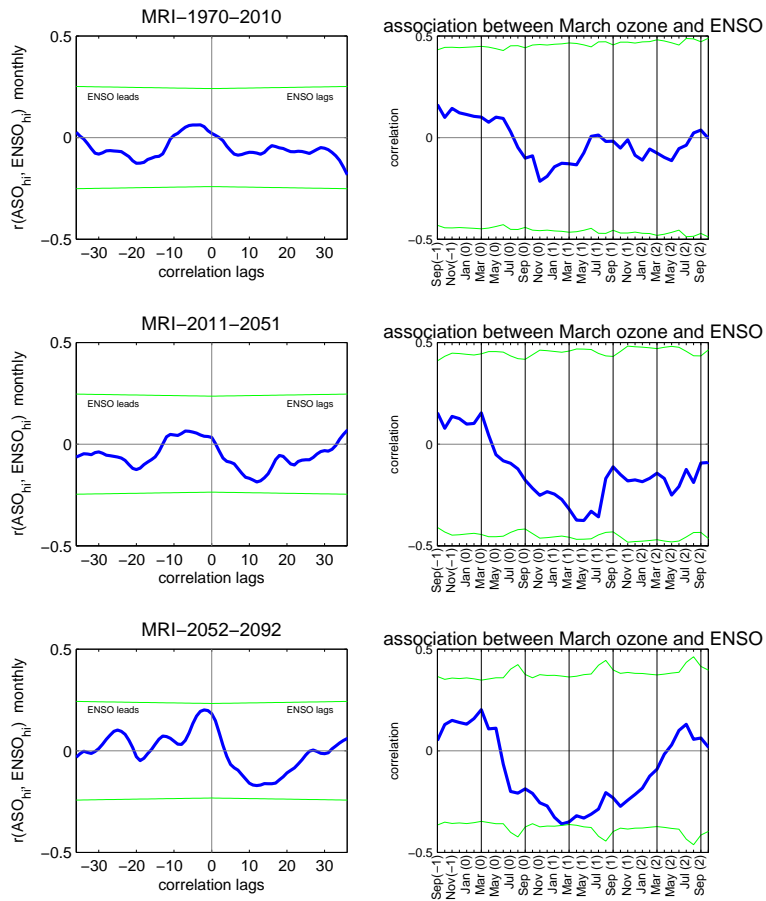
**Fig. S 38.** As in figure 7 of main body, but for NCAR-CAM4Chem run #2



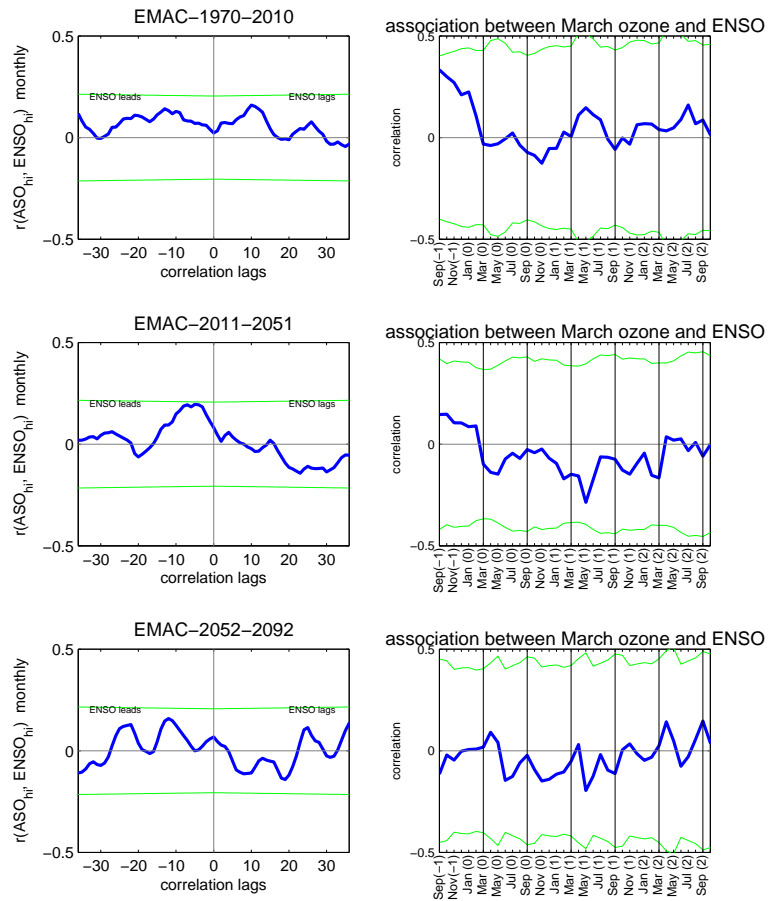
**Fig. S 39.** As in figure 7 of main body, but for NCAR-CAM4Chem run #3



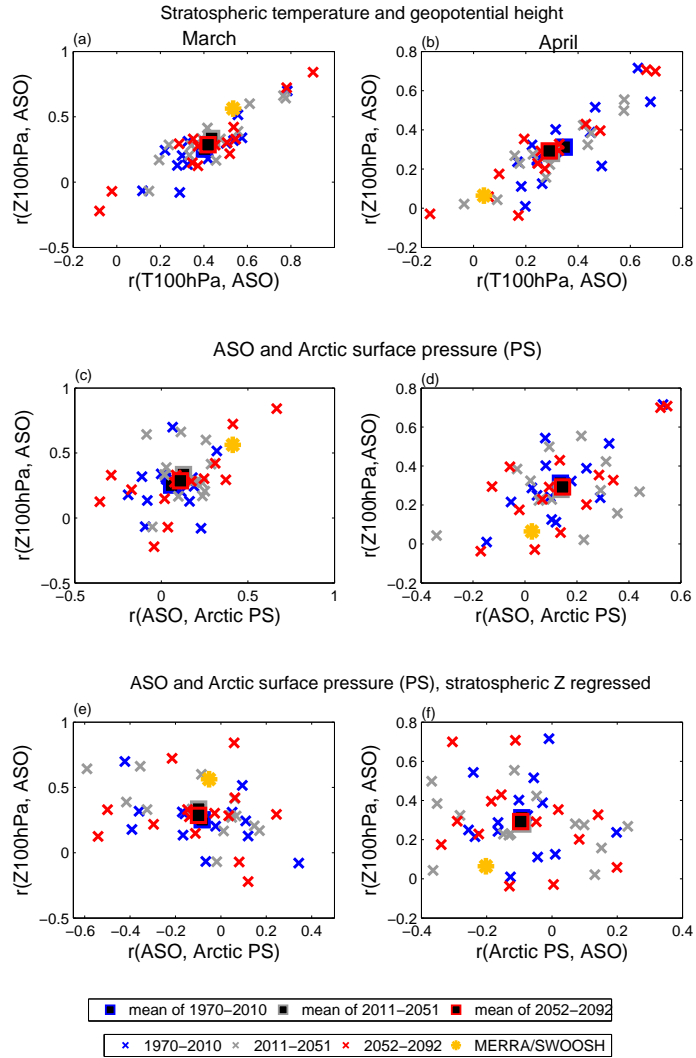
**Fig. S 40.** As in figure 7 of main body, but for HadGEM



**Fig. S 41.** As in figure 7 of main body, but for MRI



**Fig. S 42.** As in figure 7 of main body, but for EMAC



**Fig. S 43.** As in Figure 4 of the main text but with simulations conducted during the period 1970–2010, 2011–2051, 2052–2092 in separate colors as in Figure 7 of the main text.



*Acknowledgements.* CIG was supported by the Israel Science Foundation (grant number 1558/14) and by a European Research Council starting grant under the European Union’s Horizon 2020 research and innovation programme (grant agreement No 677756). We thank those involved in model development at GSFC-GMAO, and support by the NASA MAP program. We thank Valentina Aquila for performing some of the experiments discussed here, and Darryn W Waugh and Margaret M Hurwitz for suggestions. High-performance computing resources were provided by the NASA Center for Climate Simulation (NCCS). Correspondence and requests for data should be addressed to C.I.G. (email: [chaim.garfinkel@mail.huji.ac.il](mailto:chaim.garfinkel@mail.huji.ac.il)). El Niño indices based on the ERSSTv4 data were downloaded from [cpc.ncep.noaa.gov/data/indices/ersst4.nino.mth.81-10.ascii](http://cpc.ncep.noaa.gov/data/indices/ersst4.nino.mth.81-10.ascii).

## References