

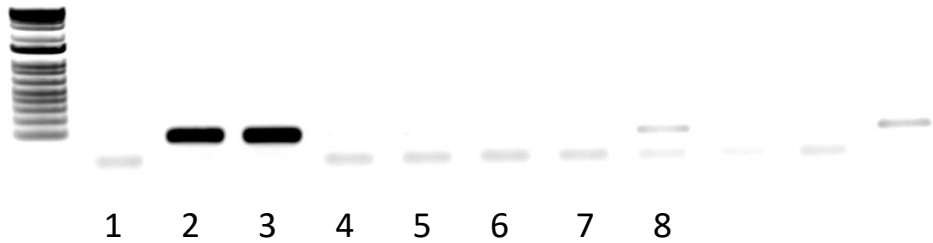
Male:

1. no template control
2. AG
3. AG from an eyestalk-ablated individual
4. eyestalk ganglia
5. thoracic ganglia complex;
6. brain
7. hemocytes
8. testis

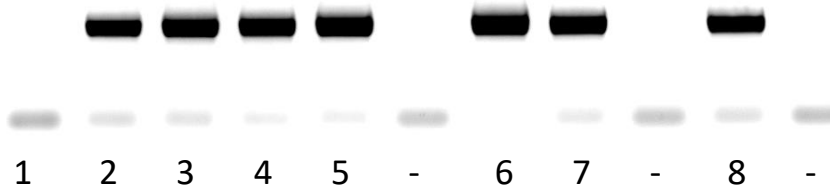
Female:

1. no template control
2. spermatheca
3. eyestalk ganglia
4. thoracic ganglia complex
5. chela muscle
6. hemocytes
7. Hepatopancreas
8. ovary. *CabNa/K-ATPase*

A. *CabIAG*



B. *CabNa/K-ATPase*



A. *CabIAG*

B. *CabNa/K-ATPase*

