

Supplementary Materials: Evaluation of the Uncertainty in Satellite-based Crop State Variable Retrievals Due to Site and Growth Stage Specific Factors and Their Potential in Coupling with Crop Growth Models *Remote Sensing* 2019, 8, remote sensing-567576.

Nathaniel Levitan ^{1,*}, Yanghui Kang ^{2,3}, Mutlu Özdoğan ^{3,4}, Vincenzo Magliulo ⁵, Paulo Castillo ⁶, Fred Moshary¹ and Barry Gross ¹

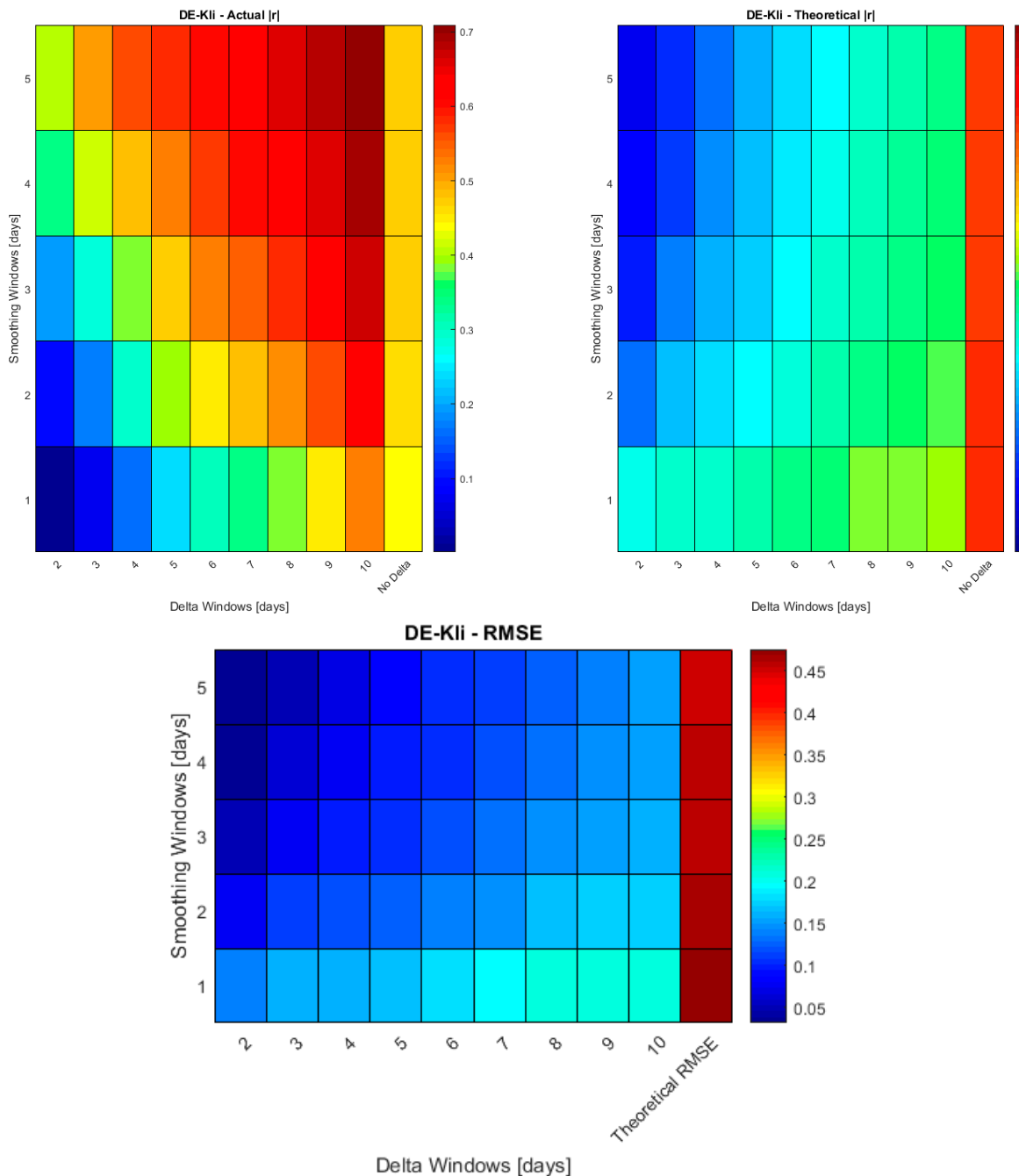


Figure S1. Actual versus theoretical $|r|$ and RMSE performance of the ΔLUE_{Canopy} retrievals at DE-Kli at different levels of smoothing and values of Δ . $N = 256$.

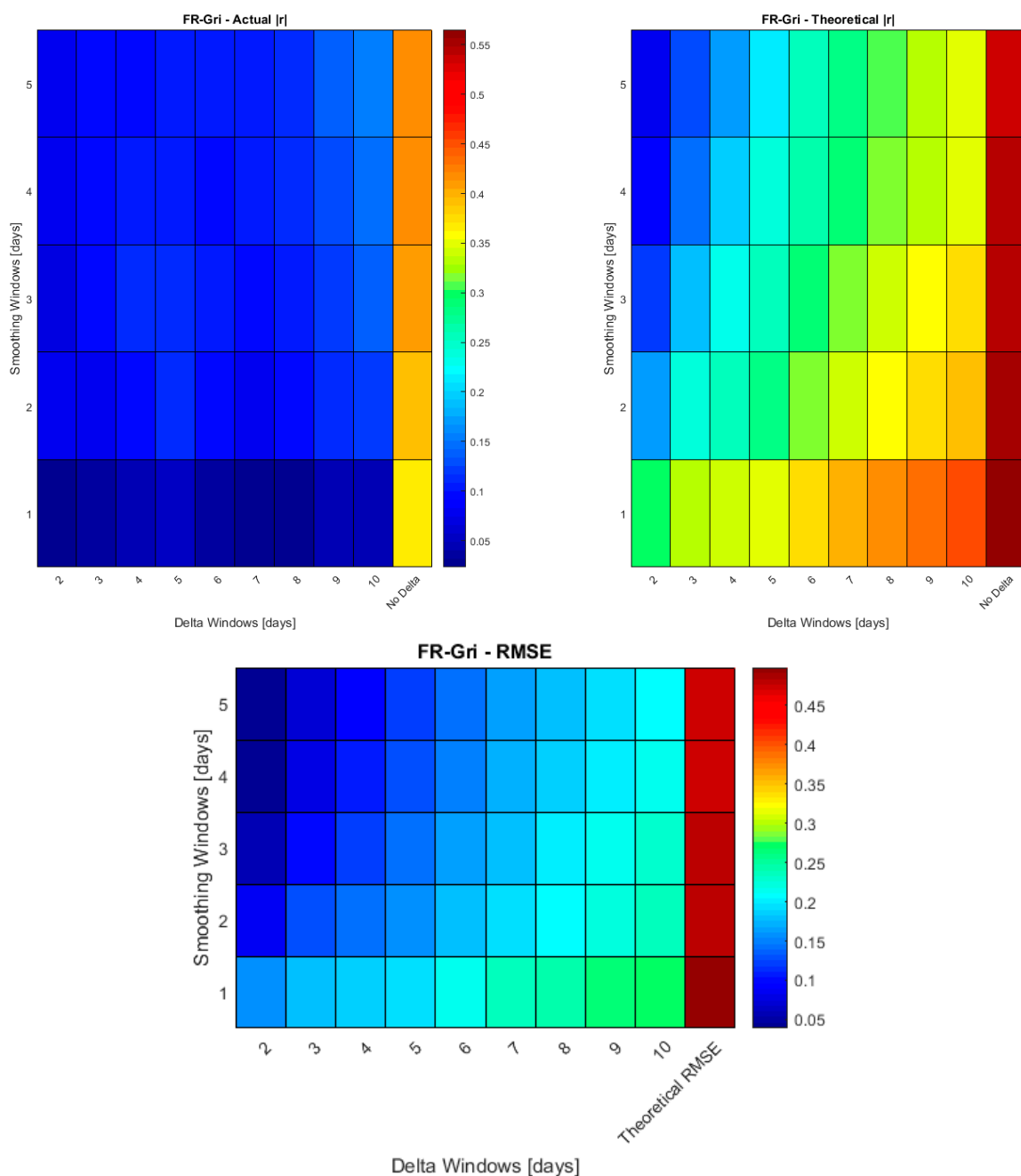


Figure S2. Actual versus theoretical $|r|$ and RMSE performance of the ΔLUE_{Canopy} retrievals at FR-Gri at different levels of smoothing and values of Δ . $N = 258$.

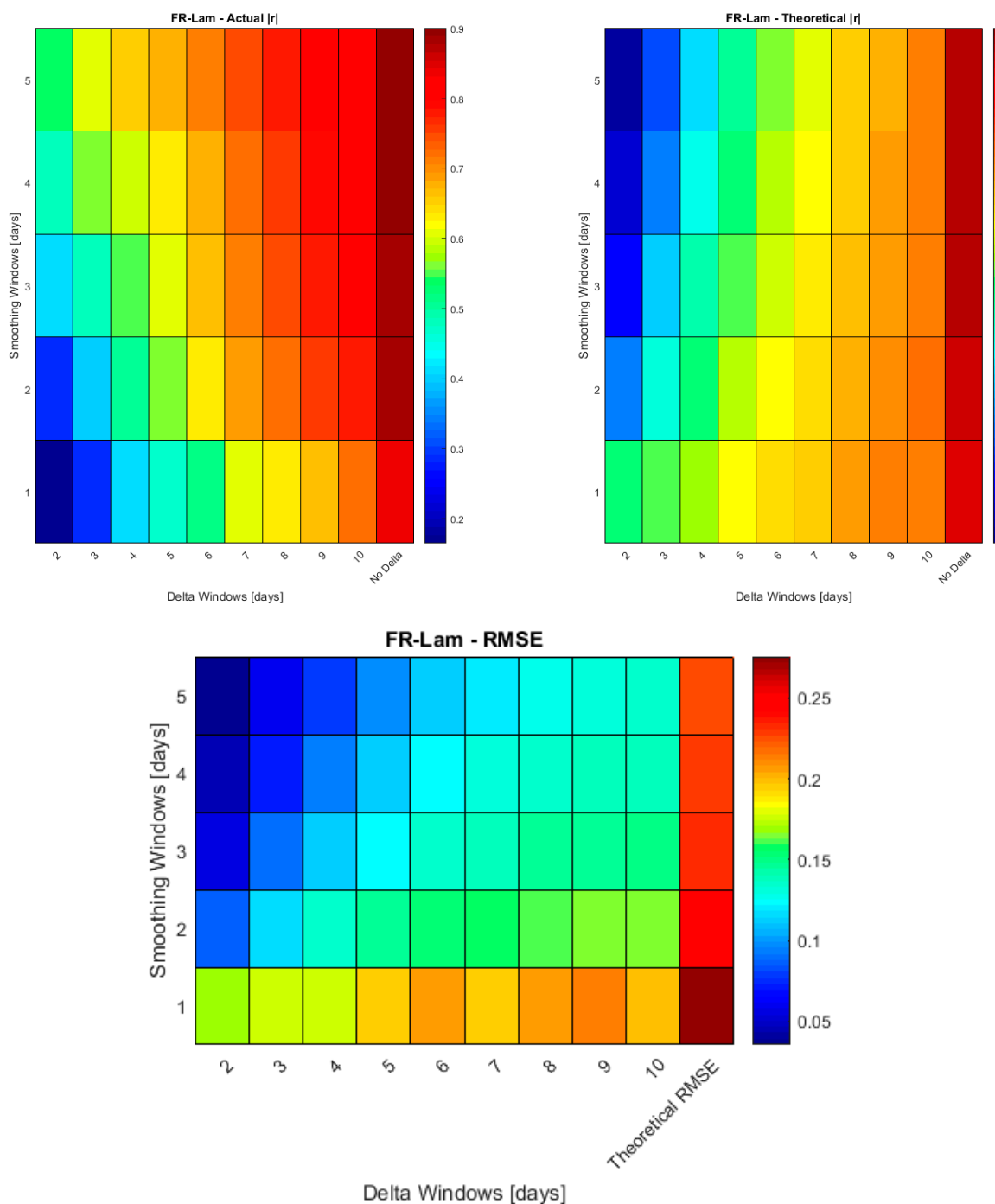


Figure S3. Actual versus theoretical $|r|$ and RMSE performance of the ΔLUE_{Canopy} retrievals at FR-Lam at different levels of smoothing and values of Δ . $N = 461$.

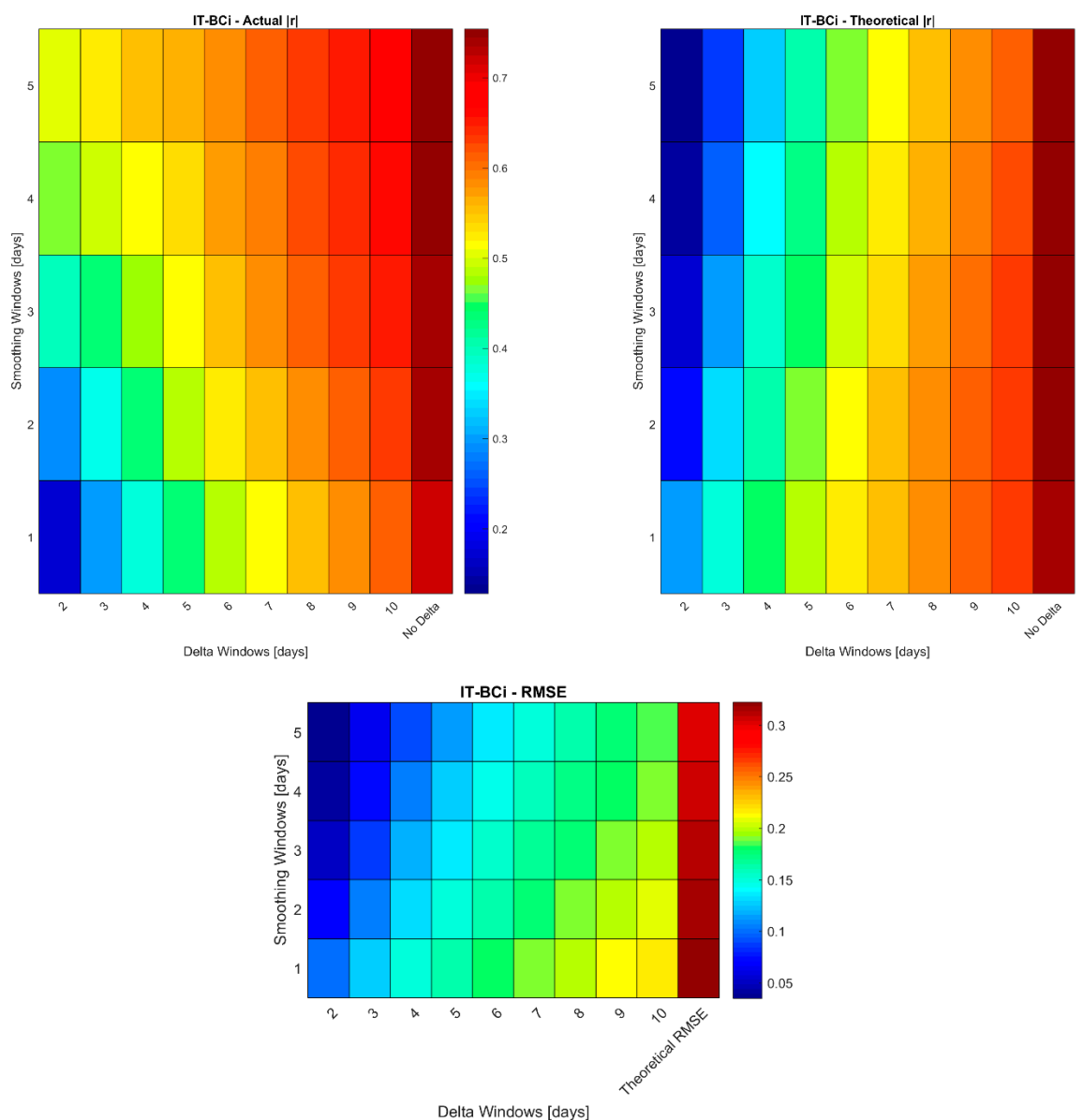


Figure S4. Actual versus theoretical $|r|$ and RMSE performance of the ΔLUE_{Canopy} retrievals at IT-Bi at different levels of smoothing and values of Δ . $N = 536$.

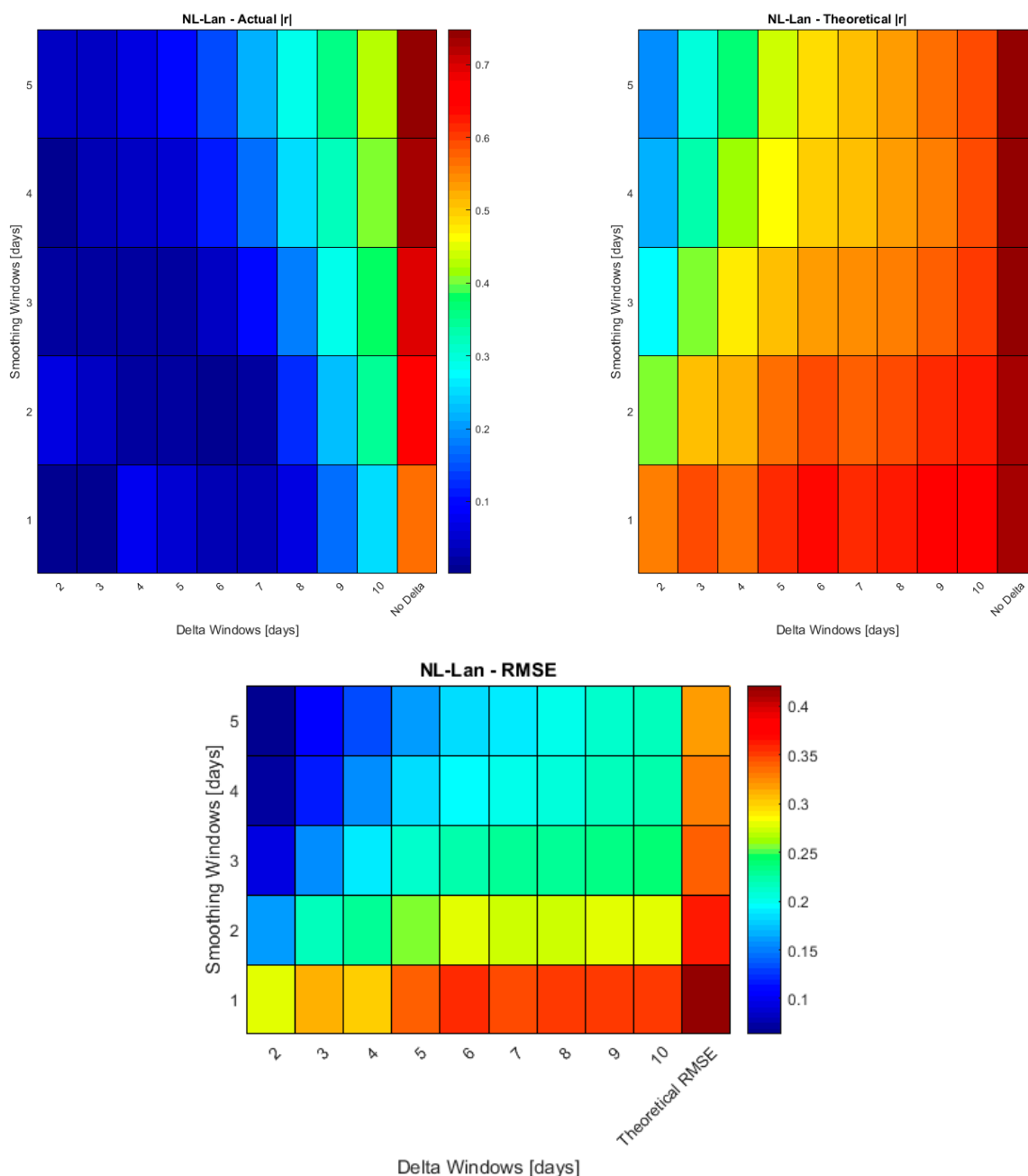


Figure S5. Actual versus theoretical $|r|$ and RMSE performance of the ΔLUE_{Canopy} retrievals at NL-Lan at different levels of smoothing and values of Δ . $N = 150$.

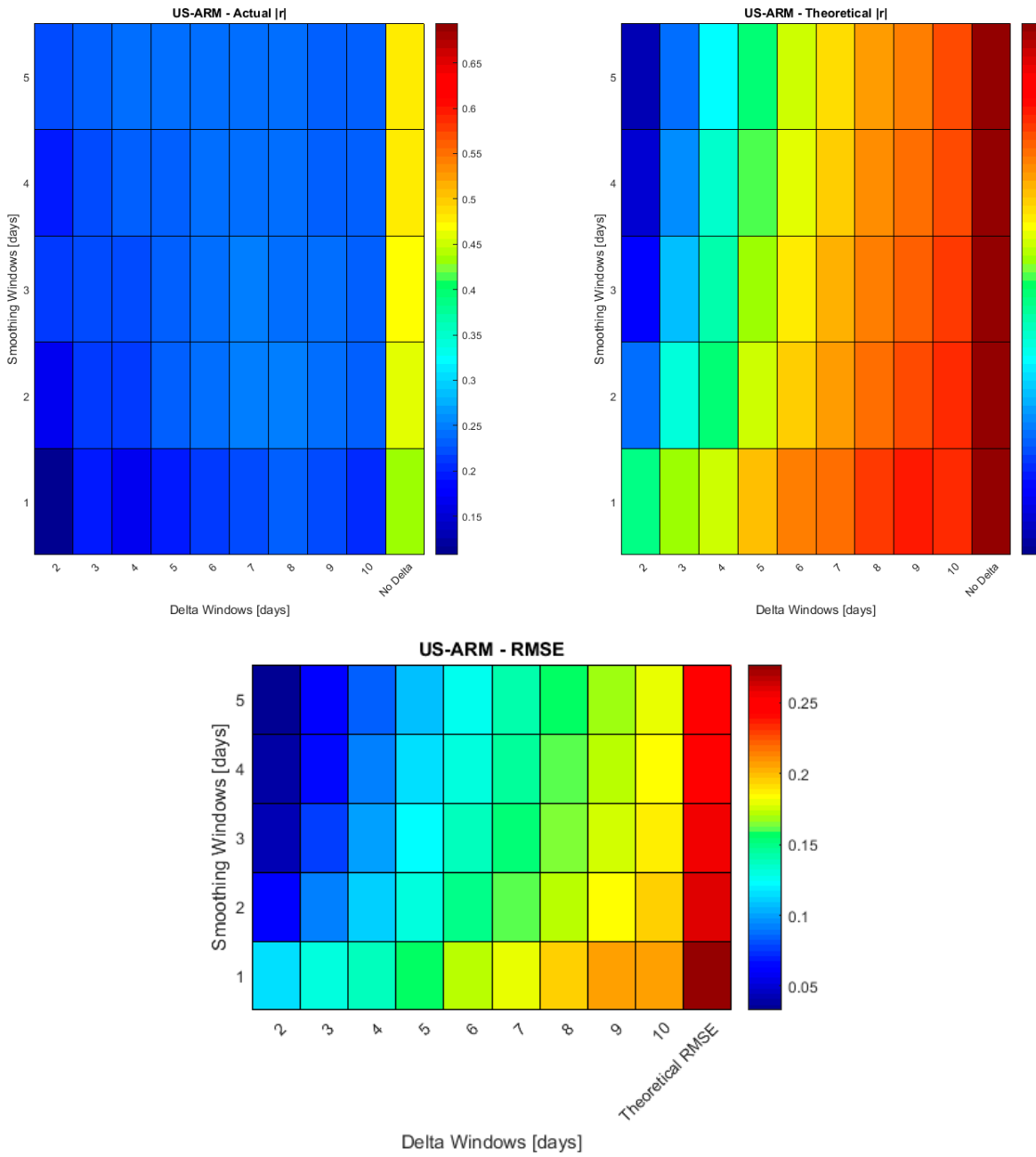


Figure S6. Actual versus theoretical $|r|$ and RMSE performance of the ΔLUE_{Canopy} retrievals at US-ARM at different levels of smoothing and values of Δ . $N = 135$.

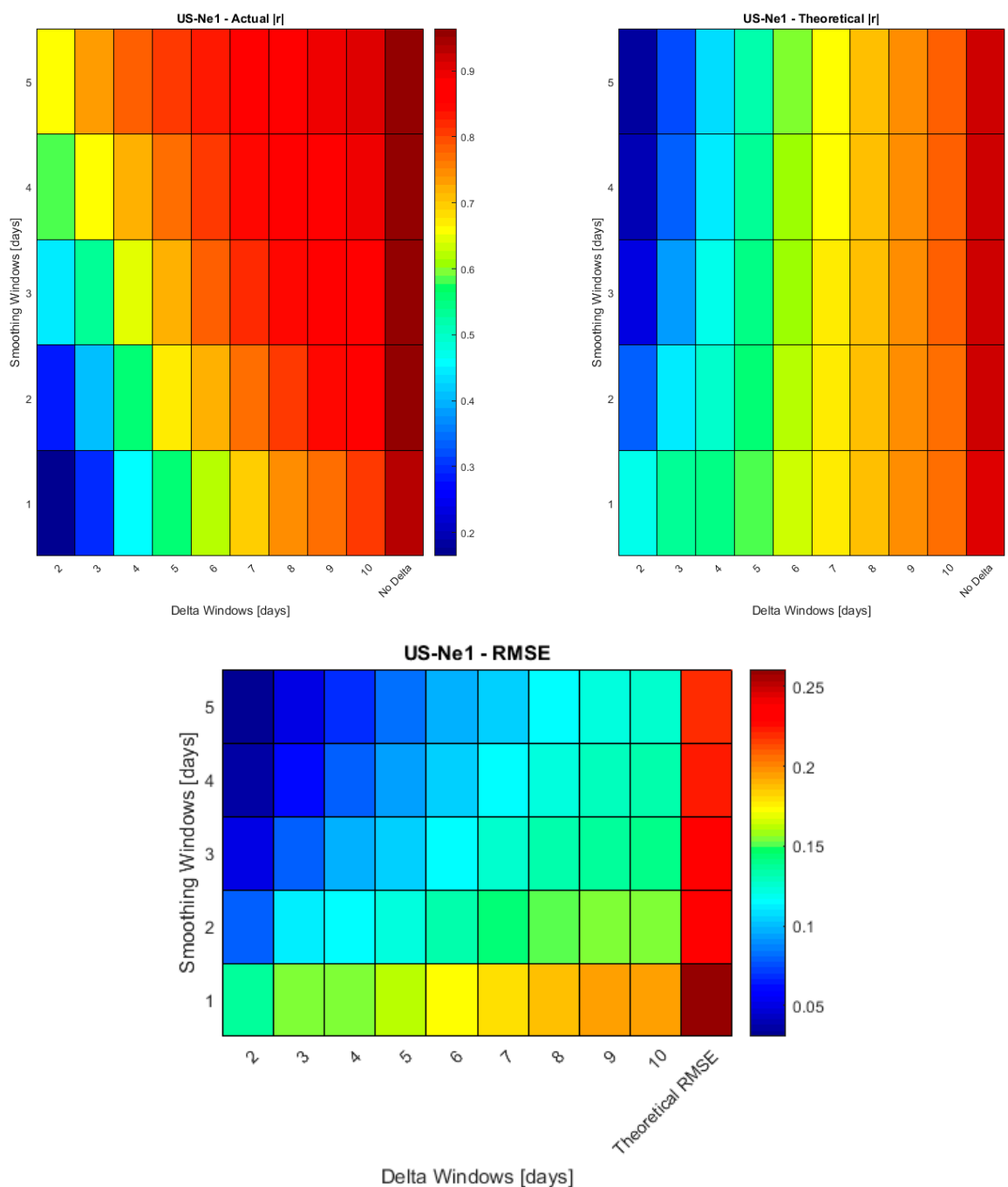


Figure S7. Actual versus theoretical $|r|$ and RMSE performance of the ΔLUE_{Canopy} retrievals at US-Ne1 at different levels of smoothing and values of Δ . $N = 1427$.

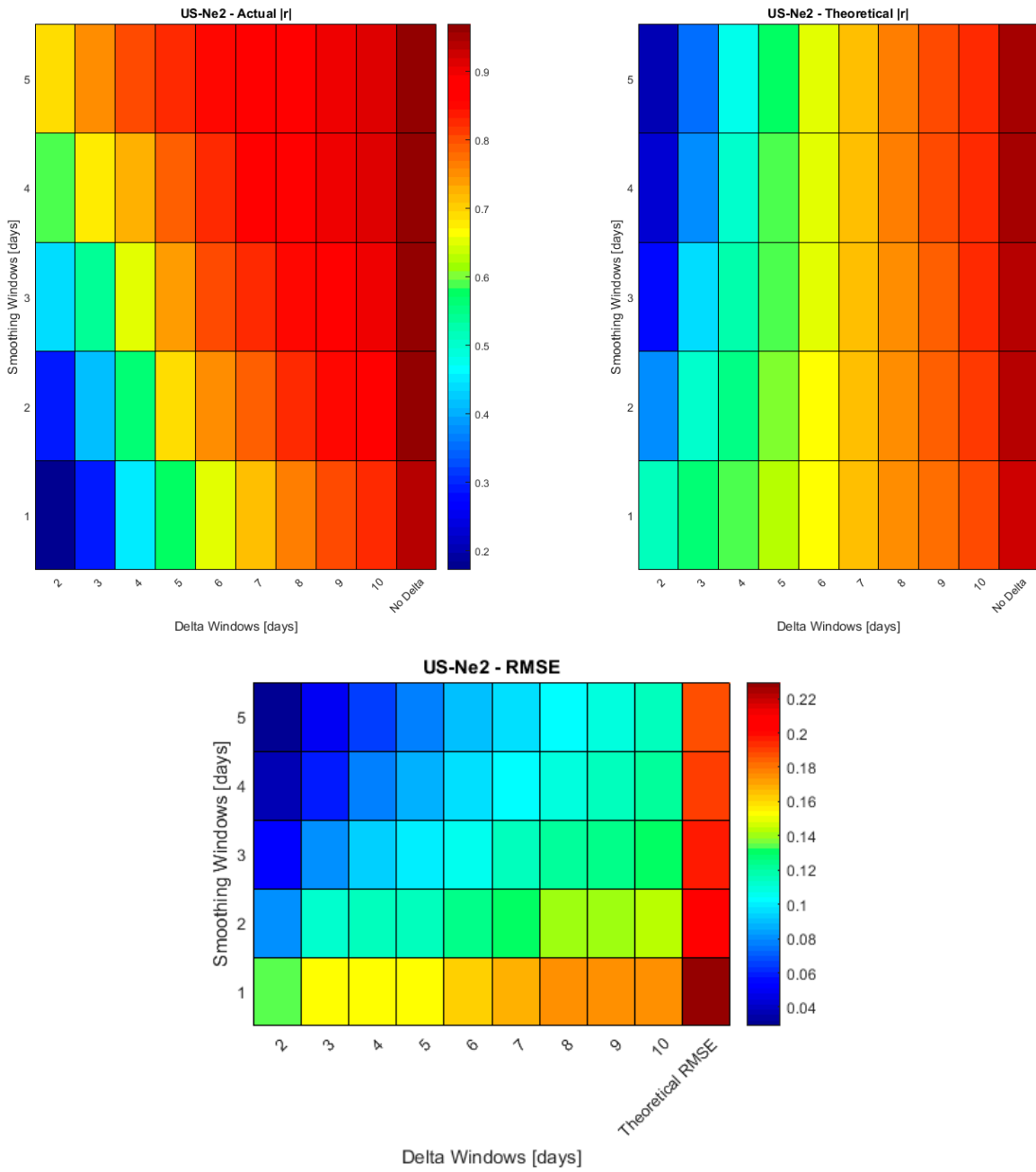


Figure S8. Actual versus theoretical $|r|$ and RMSE performance of the $\Delta LUE_{\text{Canopy}}$ retrievals at US-Ne2 at different levels of smoothing and values of Δ . $N = 799$.

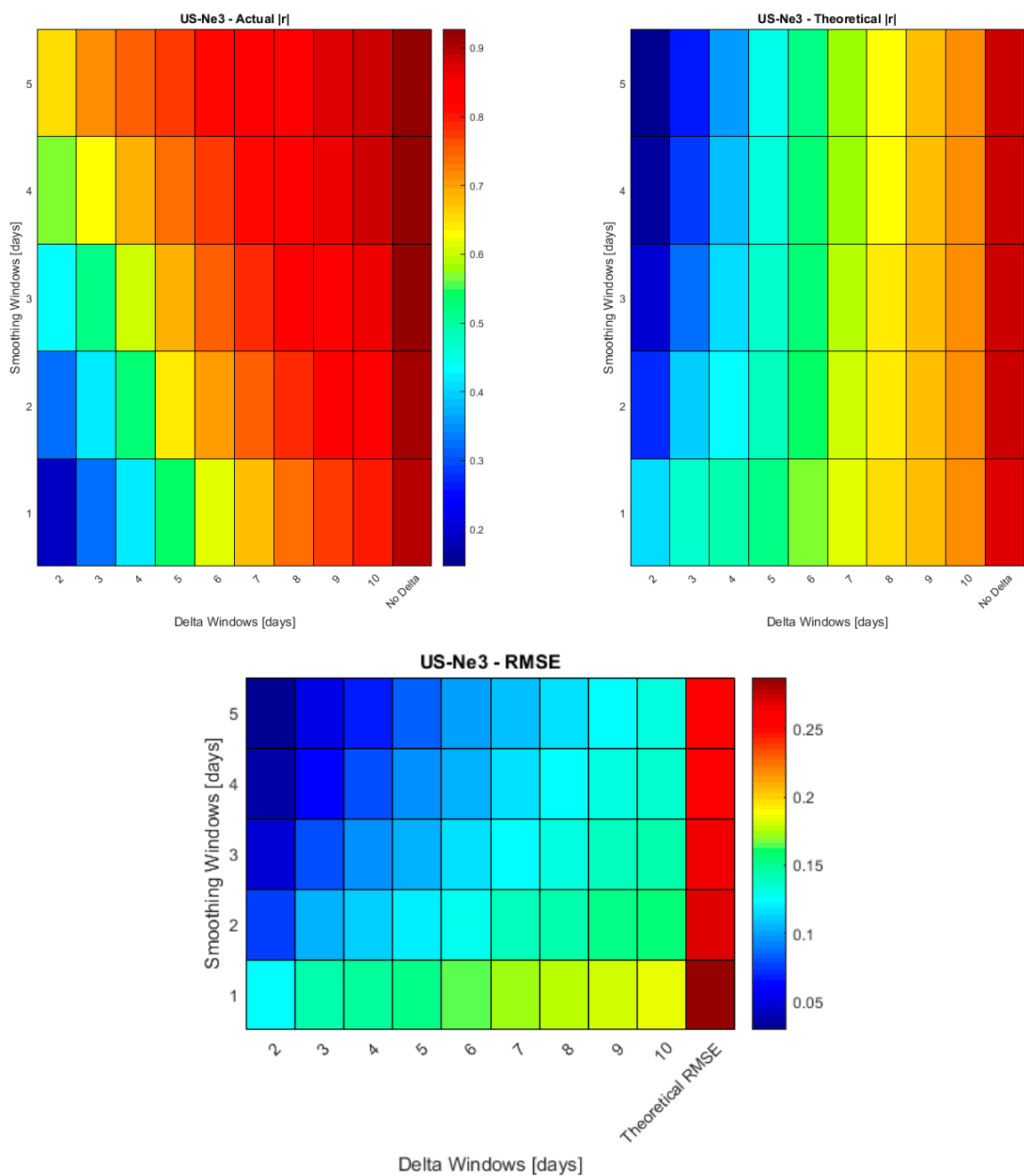


Figure S9. Actual versus theoretical $|r|$ and RMSE performance of the ΔLUE_{Canopy} retrievals at US-Ne3 at different levels of smoothing and values of Δ . $N = 786$.

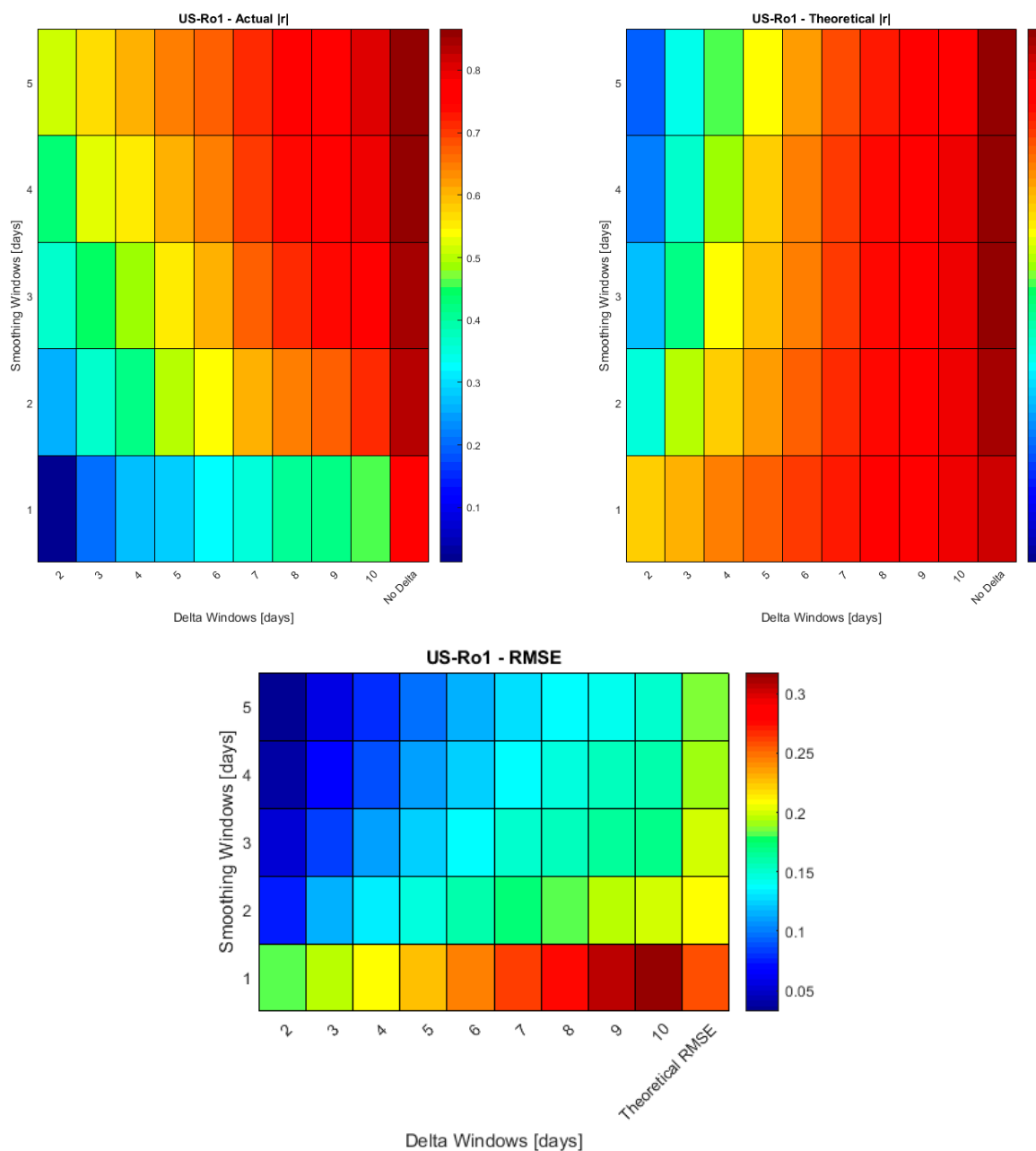


Figure S10. Actual versus theoretical |r| and RMSE performance of the ΔLUE_{Canopy} retrievals at US-Ro1 at different levels of smoothing and values of Δ . N = 263.



© 2019 by the authors; licensee MDPI, Basel, Switzerland. This article is an open access article distributed under the terms and conditions of the Creative Commons by Attribution (CC-BY) license (<http://creativecommons.org/licenses/by/4.0/>).