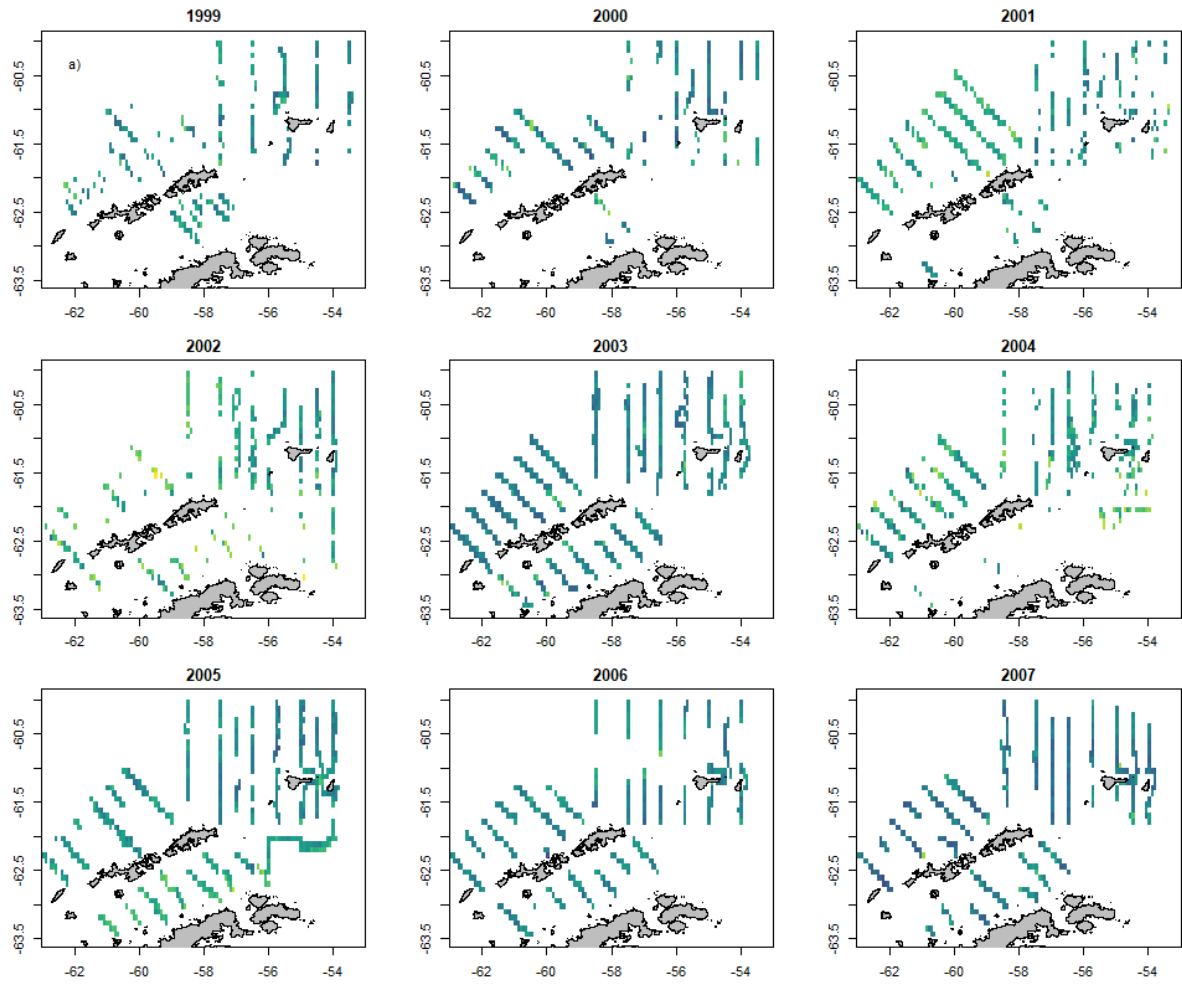
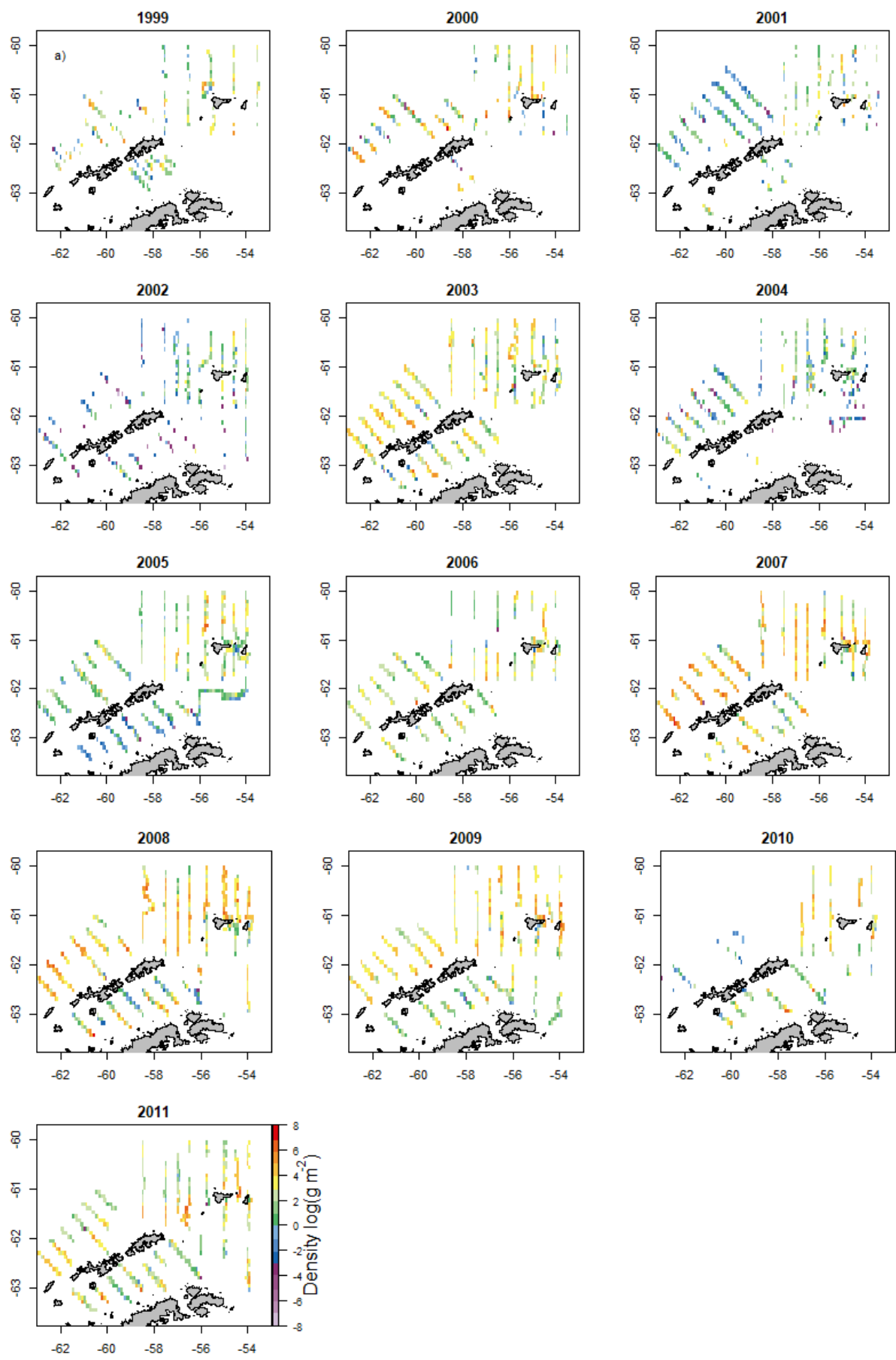


Electronic Supplementary Material 2





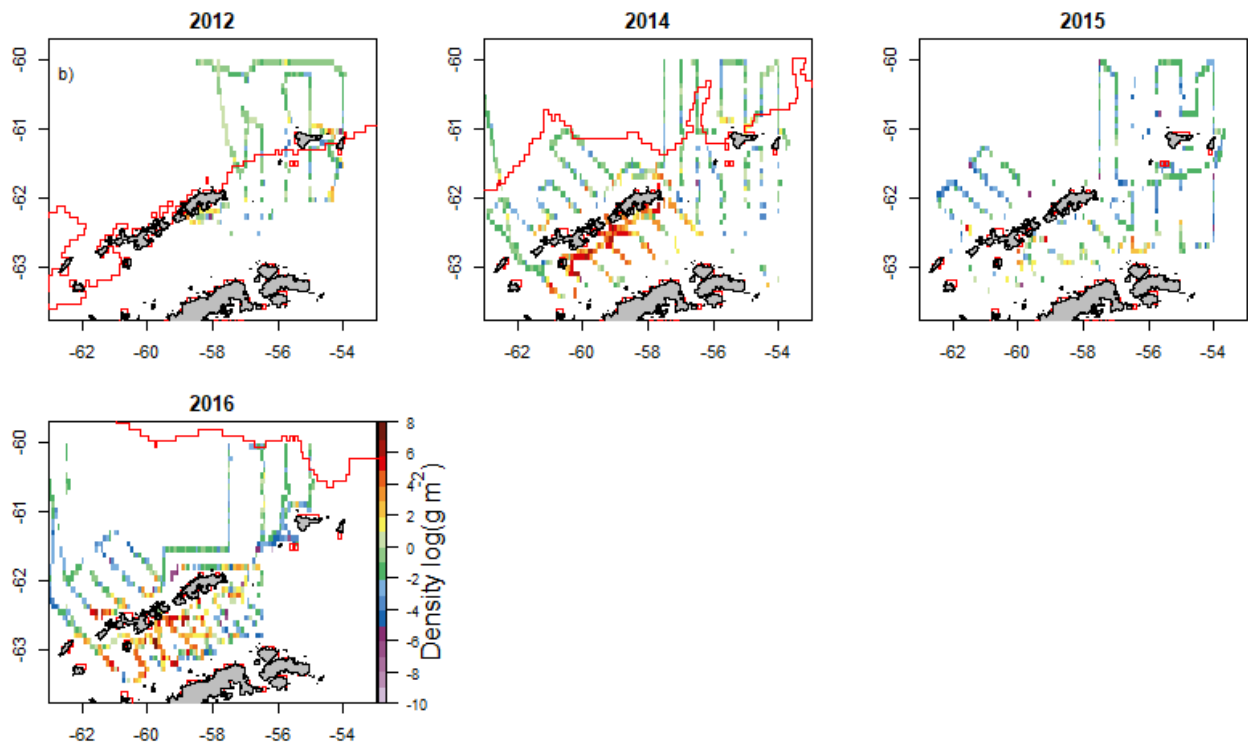


Figure S1. Mean density ( $\log, \text{g m}^{-2}$ ) of Antarctic krill *Euphausia superba* for all survey years during a) summer (1999 to 2011), b) winter (2012-2016). The mean extent of winter (August-September) sea-ice concentration >15% is shown in red on the winter plots. During 2015 the sea ice extent (>15%) was further north than our study area.