

RESOURCE SURVEY REPORT
2022 Atlantic Surfclam/Ocean Quahog

Delmarva Peninsula – Georges Bank
17 August – 30 August 2022
F/V E.S.S. Pursuit

Submitted to: NOAA, NEFSC

Charles Keith
NOAA Fisheries Service Northeast Fisheries Science Center
166 Water Street
Woods Hole, MA 02543
Phone: (508)-495-2067
Email: Charles.Keith@noaa.gov

Date: 2022

Resource Survey Report

Atlantic Surfclam/Ocean Quahog



Delmarva Peninsula – Georges Bank

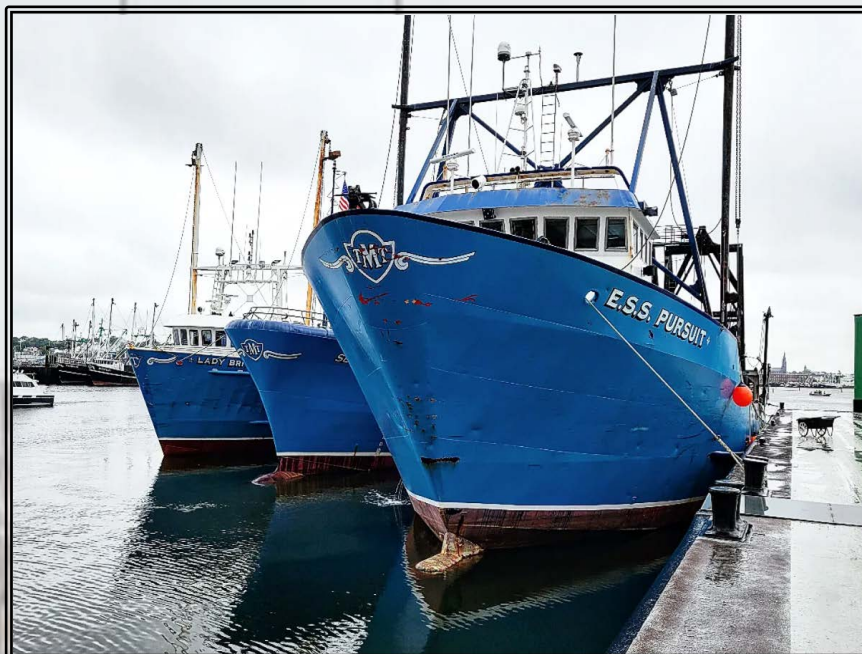
17 August – 30 August 2022

FV *E.S.S. Pursuit*

NOAA Fisheries Service

Northeast Fisheries Science Center

Woods Hole, MA 02543



The FV *E.S.S. Pursuit* docked
in New Bedford harbor



Ocean quahogs (*Arctica islandica*)
to be weighed and measured



A scientist sorts the catch
on the deck of the *Pursuit*

RESOURCE SURVEY REPORT

Catch Summary

NOAA Fisheries Service
Northeast Fisheries Science Center

Atlantic Surfclam – Ocean Quahog Survey

Delmarva Peninsula – Nantucket Shoals

17 August – 30 August 2021

The 2022 region-wide survey for Atlantic surfclam, *Spisula solidissima*; and ocean quahog, *Arctica islandica*, was conducted in continental shelf waters from Delmarva Peninsula to Nantucket Shoals aboard the F/V *E.S.S. Pursuit*. The survey, conducted by the Northeast Fisheries Science Center, provides indices of abundance and recruitment for both species.

The following charts and station data describe the distribution of surfclams and ocean quahogs during the survey. Five-minute tows were made at the speed of 3.0 knots, scope of 2:1, and with a commercial-style hydraulic dredge equipped with a 13-foot-wide cutting blade and a surface-supplied manifold positioned on the forward end of the dredge. Survey stations were randomly selected to provide unbiased abundance measurements. Therefore, these stations were not always on or near known locations of clam concentrations.

In this report, data are summarized from audited catch files generated from the Fisheries Scientific Computer System. Clam catch quantity is recorded in numbers of clams, while depth is recorded in fathoms. Percentage estimates of surfclam catches are also reported by four categories of shell height: between 0” to 4.75”, 4.76” to 5.00”, 5.01” to 5.50”, and greater than 5.50”. Distribution plots indicate relative numbers of surfclams and ocean quahogs caught on each tow. For further information, contact:

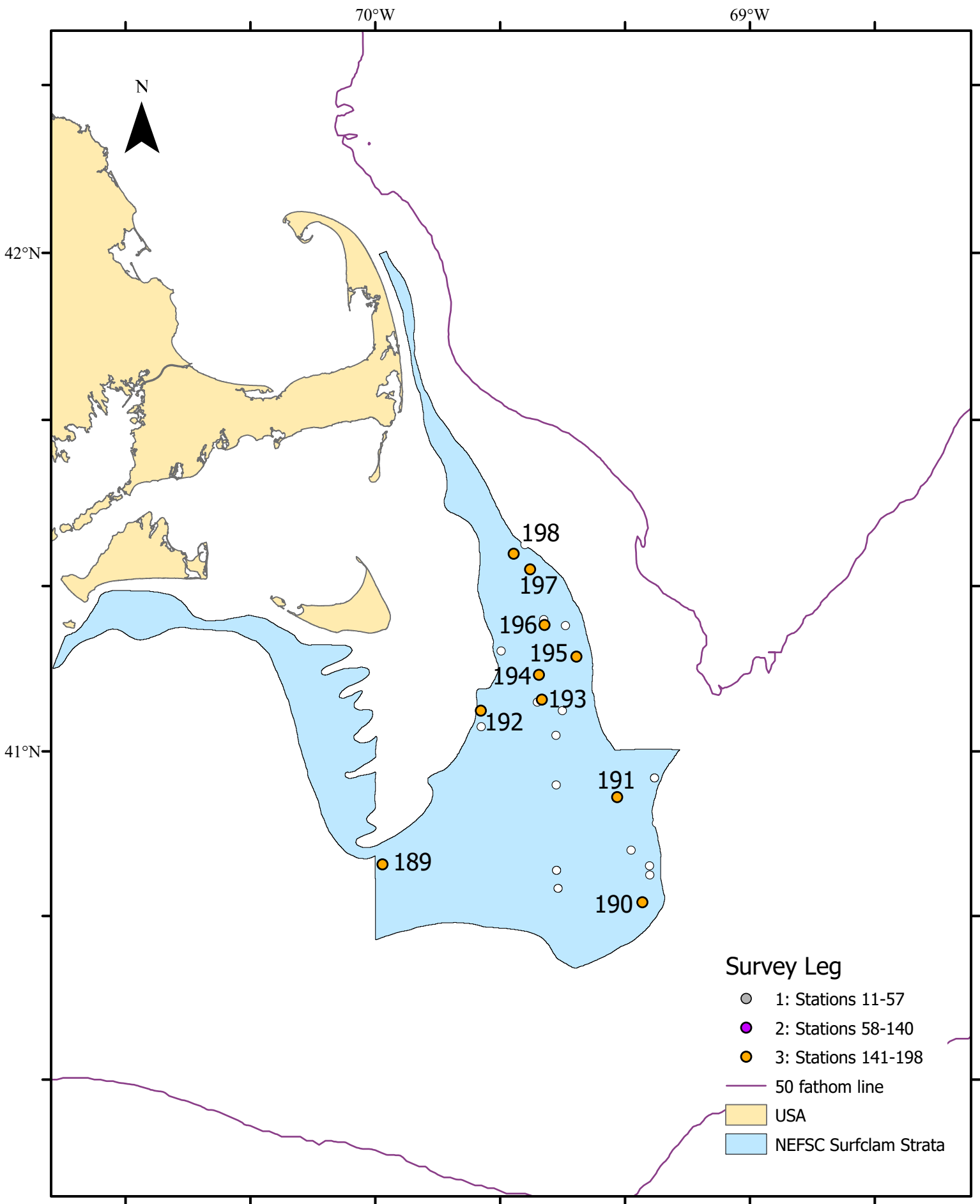
Charles Keith
NOAA National Marine Fisheries Service
Northeast Fisheries Science Center
166 Water Street
Woods Hole, MA
02543
Phone: (508)-495-2348
Email: charles.keith@noaa.gov

To view this report online, go to the [NOAA Repository Library](#) website and choose:

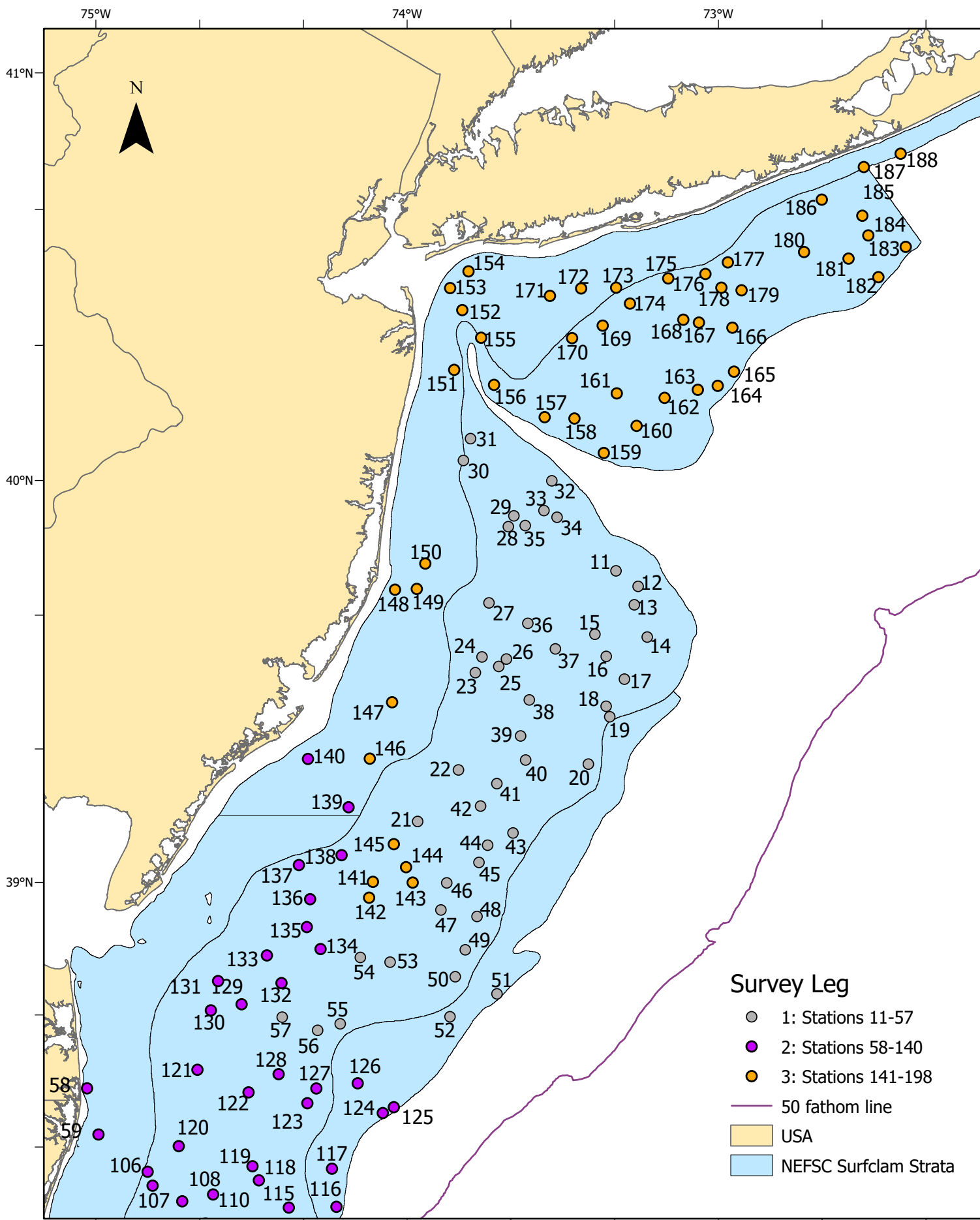
- Resource Surveys Reports
- Surfclam and Ocean Quahog Survey RSRs
- Year of interest

Appendix 1

A working group (WG) consisting of Northeast Fisheries Science Center (NEFSC) and Mid-Atlantic Fishery Management Council (MAFMC) staff, academic partners and interested persons met during 2017 to develop ideas for improving the NEFSC clam survey. The goals were to improve the precision and utility of survey data used in stock assessments and to use survey resources more efficiently. Several changes recommended by the working group were adopted for the 2018 NEFSC Atlantic Surfclam and Ocean Quahog Survey; among these were changes to the survey strata. Strata were separated by species (Atlantic surfclam and ocean quahog) and the total area covered by the survey was reduced. The new strata are individually larger and focus the survey on the areas where each species occurs. These changes allow for more tows within each stratum and put fewer tows in areas where there are no clams.



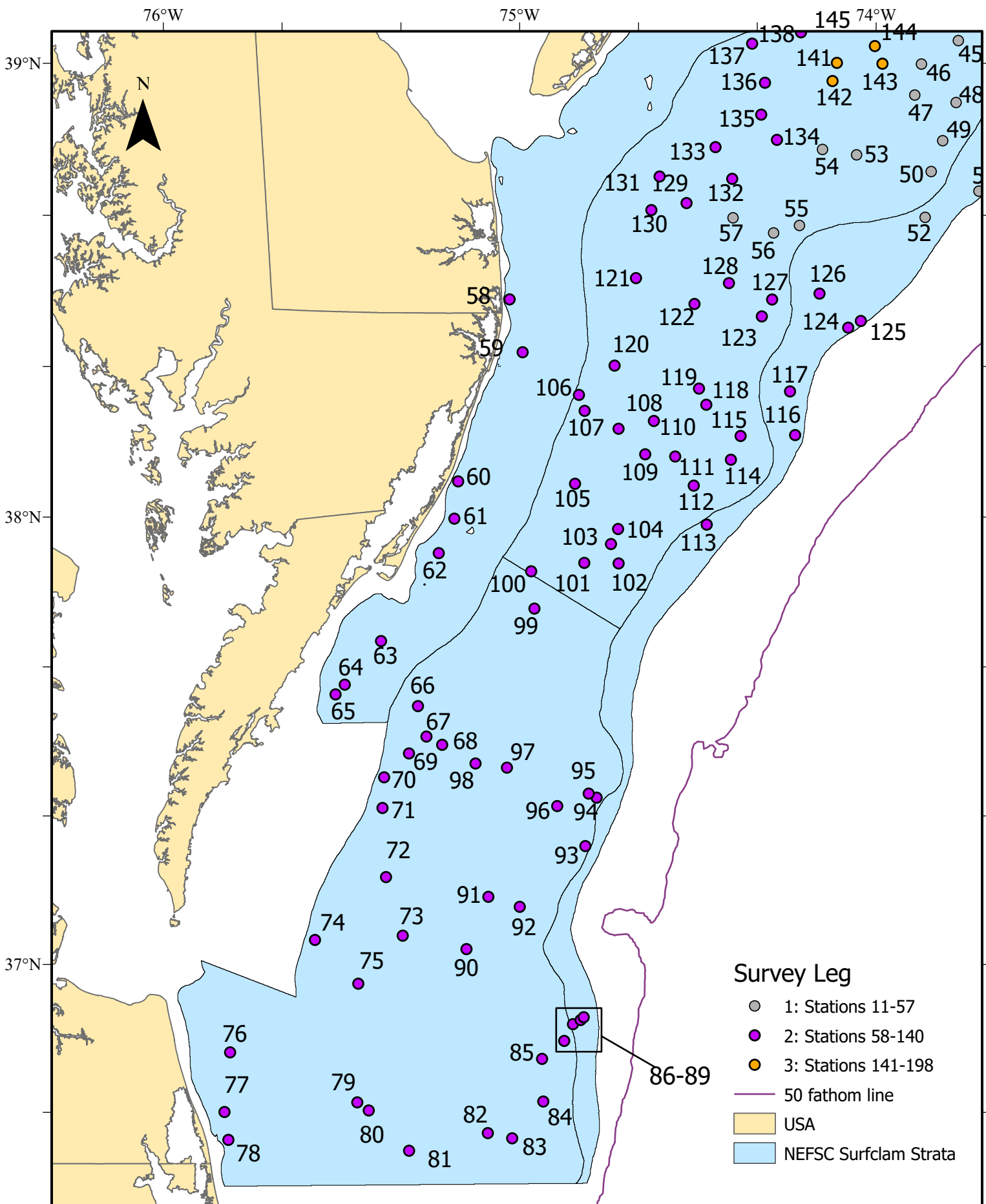
Dredge tows made from F/V *E.S.S. Pursuit* during NOAA Fisheries Service, Northeast Fisheries Science Center's Atlantic Surfclam/Ocean Quahog Survey, 17 August - 31 August 2022



Survey Leg

- 1: Stations 11-57
- 2: Stations 58-140
- 3: Stations 141-198
- 50 fathom line
- USA
- NEFSC Surfclam Strata

Dredge tows made from F/V *E.S.S. Pursuit* during NOAA Fisheries Service, Northeast Fisheries Science Center's Atlantic Surfclam/Ocean Quahog Survey, 17 August - 31 August 2022



Dredge tows made from F/V *E.S.S. Pursuit* during NOAA Fisheries Service, Northeast Fisheries Science Center's Atlantic Surfclam/Ocean Quahog Survey, 17 August - 31 August 2022

Table 1: Catch summary report from NOAA Fisheries Service, Northeast Fisheries Science Center's Surfclam / Ocean Quahog Survey 17 August – 30 August, 2022

Stratum	Station	Begin Start Dredge (EST)	Time	Leg	Depth (Fathoms)	Set Latitude	Set Longitude	Number of Surfclams	% of Surfclams 0-4.75"	% of Surfclams 4.76-5.00"	% of Surfclams 5.01-5.50"	% of Surfclams >5.50"	Number of Quahogs
06350	11	8/18/2022 5:29 AM	05:29:38	1	40	39.776517	-73.329033	0	0.00%	0.00%	0.00%	0.00%	0
06350	12	8/18/2022 6:08 AM	06:08:42	1	42	39.738033	-73.258	598	35.45%	25.08%	35.45%	4.01%	276
06350	13	8/18/2022 7:23 AM	07:23:04	1	41	39.6923	-73.270233	349	53.01%	20.92%	22.35%	3.72%	178
06350	14	8/18/2022 8:17 AM	08:17:45	1	39	39.6122	-73.2287	254	36.61%	15.35%	36.61%	11.42%	88
06350	15	8/18/2022 10:08 AM	10:08:12	1	35	39.619117	-73.396817	127	29.13%	11.81%	34.65%	24.41%	11
06350	16	8/18/2022 10:55 AM	10:55:48	1	34	39.5641	-73.360417	126	38.10%	12.70%	28.57%	20.63%	13
06350	17	8/18/2022 11:58 AM	11:58:10	1	33	39.507533	-73.301983	566	25.09%	8.48%	32.51%	33.92%	8
06350	18	8/18/2022 12:41 PM	12:41:50	1	32	39.439933	-73.360733	160	25.00%	13.13%	29.38%	32.50%	1
06350	19	8/18/2022 1:19 PM	13:19:42	1	43	39.41385	-73.3492	10	70.00%	10.00%	20.00%	0.00%	5
06350	20	8/18/2022 3:51 PM	15:51:29	1	44	39.29575	-73.417867	486	86.01%	9.05%	4.53%	0.41%	430
06350	21	8/19/2022 2:48 PM	14:48:34	1	35	39.152367	-73.9663	98	6.12%	6.12%	22.45%	65.31%	5
06350	22	8/19/2022 4:06 PM	16:06:02	1	36	39.28115	-73.835167	162	22.22%	11.11%	32.72%	33.95%	2
06350	23	8/19/2022 5:52 PM	17:52:02	1	24	39.523683	-73.780883	112	8.04%	1.79%	18.75%	71.43%	0
06350	24	8/19/2022 6:38 PM	18:38:25	1	24	39.562783	-73.759567	111	7.21%	7.21%	14.41%	71.17%	0
06350	25	8/19/2022 7:21 PM	19:21:07	1	26	39.539133	-73.705767	130	4.62%	4.62%	18.46%	72.31%	0
06350	26	8/19/2022 8:02 PM	20:02:45	1	28	39.557517	-73.681133	114	2.63%	3.51%	18.42%	75.44%	0
06350	27	8/19/2022 9:12 PM	21:12:32	1	24	39.697033	-73.737133	164	13.41%	1.22%	18.29%	67.07%	0
06350	28	8/19/2022 10:40 PM	22:40:31	1	30	39.88605	-73.675	198	12.12%	7.07%	35.35%	45.45%	0
06350	29	8/19/2022 11:23 PM	23:23:42	1	31	39.912767	-73.657133	184	25.00%	9.78%	39.13%	26.09%	1
06350	30	8/20/22 12:57 AM	00:57:33	1	26	40.049633	-73.819267	2	0.00%	100.00%	0.00%	0.00%	0
06350	31	8/20/2022 1:40 AM	01:40:16	1	28	40.103517	-73.7964	12	91.67%	0.00%	0.00%	8.33%	0
06350	32	8/20/2022 3:41 AM	03:41:12	1	39	39.99935	-73.53525	114	28.07%	21.93%	42.98%	7.02%	16
06350	33	8/20/2022 4:38 AM	04:38:57	1	29	39.925817	-73.560533	148	24.32%	11.49%	36.49%	27.70%	18
06350	34	8/20/2022 5:31 AM	05:31:09	1	37	39.909283	-73.51845	394	33.25%	26.14%	31.98%	8.63%	259
06350	35	8/20/2022 6:18 AM	06:18:25	1	27	39.888717	-73.620667	0	0.00%	0.00%	0.00%	0.00%	0
06350	36	8/20/2022 8:33 AM	08:33:16	1	32	39.64625	-73.6123	92	27.17%	10.87%	23.91%	38.04%	5
06350	37	8/20/2022 9:26 AM	09:26:42	1	37	39.582767	-73.523717	96	17.71%	18.75%	38.54%	25.00%	30
06350	38	8/20/2022 10:37 AM	10:37:01	1	30	39.455817	-73.6076	205	10.73%	6.83%	24.88%	57.56%	5
06350	39	8/20/2022 11:28 AM	11:28:12	1	36	39.365967	-73.635533	211	12.32%	8.53%	35.55%	43.60%	7
06350	40	8/20/2022 12:25 PM	12:25:39	1	42	39.305933	-73.61935	231	32.03%	10.39%	36.80%	20.78%	19
06350	41	8/20/2022 1:19 PM	13:19:29	1	41	39.246983	-73.711883	226	16.37%	9.73%	34.07%	39.82%	22
06350	42	8/20/2022 2:03 PM	14:03:06	1	40	39.190883	-73.76415	624	39.90%	20.19%	30.77%	9.13%	100
06350	43	8/20/2022 3:11 PM	15:11:50	1	37	39.123633	-73.65995	154	36.36%	21.43%	27.27%	14.94%	1
06350	44	8/20/2022 3:55 PM	15:55:42	1	37	39.093	-73.741467	276	22.10%	19.57%	37.32%	21.01%	286
06350	45	8/20/2022 5:16 PM	17:16:57	1	43	39.04985	-73.7693	450	24.67%	18.89%	38.44%	18.00%	302
06350	46	8/20/2022 6:06 PM	18:06:29	1	35	38.998533	-73.872867	105	19.05%	9.52%	47.62%	23.81%	4
06350	47	8/20/2022 6:45 PM	18:45:38	1	38	38.93065	-73.891617	75	6.67%	16.00%	50.67%	26.67%	23
06350	48	8/20/2022 7:37 PM	19:37:43	1	48	38.914333	-73.775567	52	63.46%	23.08%	13.46%	0.00%	541
06350	49	8/20/2022 8:25 PM	20:25:45	1	41	38.830583	-73.813183	39	79.49%	15.38%	5.13%	0.00%	79
06350	50	8/20/2022 9:06 PM	21:06:14	1	43	38.7629	-73.8455	876	61.19%	22.83%	15.98%	0.00%	1143
06450	51	8/20/2022 10:18 PM	22:18:29	1	55	38.7198	-73.711483	2	100.00%	0.00%	0.00%	0.00%	368
06450	52	8/20/2022 11:31 PM	23:31:33	1	46	38.6622	-73.86245	112	79.46%	15.18%	5.36%	0.00%	321
06350	53	8/21/2022 1:07 AM	01:07:31	1	46	38.79955	-74.054833	3	66.67%	33.33%	0.00%	0.00%	2
06350	54	8/21/2022 1:50 AM	01:50:33	1	42	38.811367	-74.1504	188	19.15%	19.68%	50.53%	10.64%	68
06350	55	8/21/2022 3:19 AM	03:19:44	1	43	38.644333	-74.215083	122	25.41%	27.05%	39.34%	8.20%	9
06350	56	8/21/2022 3:57 AM	03:57:11	1	41	38.627917	-74.28765	83	6.02%	12.05%	49.40%	32.53%	11
06350	57	8/21/2022 4:48 AM	04:48:10	1	31	38.66115	-74.40145	17	35.29%	11.76%	41.18%	11.76%	0
06250	58	8/22/2022 6:18 PM	18:18:47	2	11	38.481533	-75.028367	1	0.00%	0.00%	100.00%	0.00%	1
06250	59	8/22/2022 7:17 PM	19:17:34	2	16	38.3649	-74.9918	1	100.00%	0.00%	0.00%	0.00%	0
06250	60	8/22/2022 9:46 PM	21:46:54	2	9	38.079083	-75.172717	0	0.00%	0.00%	0.00%	0.00%	0
06250	61	8/22/2022 10:29 PM	22:29:54	2	15	37.9964	-75.183383	0	0.00%	0.00%	0.00%	0.00%	4
06250	62	8/22/2022 11:17 PM	23:17:14	2	14	37.919833	-75.22715	0	0.00%	0.00%	0.00%	0.00%	0
06250	63	8/23/2022 1:03 AM	01:03:59	2	13	37.724167	-75.3891	0	0.00%	0.00%	0.00%	0.00%	0

Table 1: Catch summary report from NOAA Fisheries Service, Northeast Fisheries Science Center's Surfclam / Ocean Quahog Survey 17 August – 30 August, 2022

Stratum	Station	Begin Start Dredge (EST)	Time	Leg	Depth (Fathoms)	Set Latitude	Set Longitude	Number of Surfclams	% of Surfclams 0-4.75"	% of Surfclams 4.76-5.00"	% of Surfclams 5.01-5.50"	% of Surfclams >5.50"	Number of Quahogs
062S0	64	8/23/2022 2:07 AM	02:07:26	2	15	37.62695	-75.490867	0	0.00%	0.00%	0.00%	0.00%	0
062S0	65	8/23/2022 2:29 AM	02:29:25	2	12	37.605217	-75.516767	0	0.00%	0.00%	0.00%	0.00%	0
061S0	66	8/23/2022 4:05 AM	04:05:33	2	25	37.579067	-75.285533	0	0.00%	0.00%	0.00%	0.00%	0
061S0	67	8/23/2022 4:46 AM	04:46:41	2	23	37.511067	-75.261717	0	0.00%	0.00%	0.00%	0.00%	0
061S0	68	8/23/2022 5:56 AM	05:56:01	2	31	37.4926	-75.217583	0	0.00%	0.00%	0.00%	0.00%	0
061S0	69	8/23/2022 6:39 AM	06:39:14	2	24	37.473317	-75.3107	0	0.00%	0.00%	0.00%	0.00%	0
061S0	70	8/23/2022 7:19 AM	07:19:43	2	27	37.419933	-75.380467	0	0.00%	0.00%	0.00%	0.00%	0
061S0	71	8/23/2022 7:58 AM	07:58:24	2	23	37.3513	-75.385033	0	0.00%	0.00%	0.00%	0.00%	0
061S0	72	8/23/2022 9:12 AM	09:12:30	2	25	37.196383	-75.375167	0	0.00%	0.00%	0.00%	0.00%	0
061S0	73	8/23/2022 10:20 AM	10:20:11	2	29	37.0648	-75.32825	0	0.00%	0.00%	0.00%	0.00%	0
061S0	74	8/23/2022 11:55 AM	11:55:42	2	20	37.0552	-75.574467	0	0.00%	0.00%	0.00%	0.00%	0
061S0	75	8/23/2022 1:07 PM	13:07:50	2	25	36.956733	-75.452917	0	0.00%	0.00%	0.00%	0.00%	0
061S0	76	8/23/2022 3:33 PM	15:33:56	2	16	36.801967	-75.812583	0	0.00%	0.00%	0.00%	0.00%	0
061S0	77	8/23/2022 4:38 PM	16:38:55	2	15	36.667333	-75.828317	0	0.00%	0.00%	0.00%	0.00%	0
061S0	78	8/23/2022 5:15 PM	17:15:43	2	16	36.604333	-75.817383	0	0.00%	0.00%	0.00%	0.00%	0
061S0	79	8/23/2022 7:35 PM	19:35:49	2	26	36.689083	-75.45575	0	0.00%	0.00%	0.00%	0.00%	0
061S0	80	8/23/2022 7:59 PM	19:59:15	2	19	36.670817	-75.4236	14	100.00%	0.00%	0.00%	0.00%	0
061S0	81	8/23/2022 9:04 PM	21:04:50	2	30	36.57975	-75.310433	0	0.00%	0.00%	0.00%	0.00%	0
061S0	82	8/23/2022 10:32 PM	22:32:34	2	20	36.619633	-75.08945	2035	100.00%	0.00%	0.00%	0.00%	0
061S0	83	8/23/2022 11:33 PM	23:33:11	2	26	36.607867	-75.021117	731	100.00%	0.00%	0.00%	0.00%	0
061S0	84	8/24/22 12:27 AM	00:27:53	2	31	36.691017	-74.933883	674	99.70%	0.30%	0.00%	0.00%	0
061S0	85	8/24/2022 1:15 AM	01:15:02	2	31	36.787283	-74.937283	288	87.15%	9.72%	3.13%	0.00%	0
061S0	86	8/24/2022 2:10 AM	02:10:49	2	45	36.827817	-74.8751	4	50.00%	50.00%	0.00%	0.00%	0
064S0	87	8/24/2022 2:36 AM	02:36:40	2	51	36.86555	-74.850617	6	100.00%	0.00%	0.00%	0.00%	0
064S0	88	8/24/2022 2:53 AM	02:53:31	2	54	36.874933	-74.829117	0	0.00%	0.00%	0.00%	0.00%	0
064S0	89	8/24/2022 3:04 AM	03:04:16	2	55	36.8812	-74.8205	15	93.33%	6.67%	0.00%	0.00%	5
061S0	90	8/24/2022 5:37 AM	05:37:05	2	37	37.034567	-75.149383	0	0.00%	0.00%	0.00%	0.00%	0
061S0	91	8/24/2022 6:37 AM	06:37:46	2	32	37.152067	-75.088	641	51.95%	22.62%	19.81%	5.62%	1
061S0	92	8/24/2022 7:42 AM	07:42:24	2	38	37.1296	-74.999883	8	0.00%	12.50%	75.00%	12.50%	0
061S0	93	8/24/2022 9:16 AM	09:16:17	2	51	37.265933	-74.815817	16	56.25%	25.00%	18.75%	0.00%	0
061S0	94	8/24/2022 10:14 AM	10:14:34	2	44	37.374417	-74.7842	12	91.67%	0.00%	0.00%	8.33%	0
061S0	95	8/24/2022 10:59 AM	10:59:31	2	47	37.383467	-74.806467	9	100.00%	0.00%	0.00%	0.00%	0
061S0	96	8/24/2022 11:41 AM	11:41:06	2	39	37.355567	-74.89475	0	0.00%	0.00%	0.00%	0.00%	0
061S0	97	8/24/2022 12:48 PM	12:48:07	2	35	37.441567	-75.035867	0	0.00%	0.00%	0.00%	0.00%	0
061S0	98	8/24/2022 1:26 PM	13:26:46	2	30	37.4509	-75.124033	0	0.00%	0.00%	0.00%	0.00%	0
061S0	99	8/24/2022 4:04 PM	16:04:21	2	30	37.796467	-74.95875	0	0.00%	0.00%	0.00%	0.00%	0
063S0	100	8/24/2022 4:51 PM	16:51:57	2	23	37.879417	-74.96785	0	0.00%	0.00%	0.00%	0.00%	0
063S0	101	8/24/2022 5:52 PM	17:52:13	2	29	37.89815	-74.818783	3	33.33%	33.33%	33.33%	0.00%	0
063S0	102	8/24/2022 6:33 PM	18:33:30	2	39	37.896917	-74.722533	0	0.00%	0.00%	0.00%	0.00%	0
063S0	103	8/24/2022 7:01 PM	19:01:44	2	30	37.94	-74.743933	1	0.00%	100.00%	0.00%	0.00%	0
063S0	104	8/24/2022 7:28 PM	19:28:13	2	33	37.9734	-74.723983	2	100.00%	0.00%	0.00%	0.00%	0
063S0	105	8/24/2022 8:37 PM	20:37:39	2	27	38.07385	-74.844783	0	0.00%	0.00%	0.00%	0.00%	0
063S0	106	8/24/2022 10:11 PM	22:11:53	2	22	38.2706	-74.833783	0	0.00%	0.00%	0.00%	0.00%	0
063S0	107	8/24/2022 11:00 PM	23:00:52	2	21	38.235317	-74.81785	1	100.00%	0.00%	0.00%	0.00%	0
063S0	108	8/24/2022 11:43 PM	23:43:40	2	33	38.195717	-74.722683	0	0.00%	0.00%	0.00%	0.00%	0
063S0	109	8/25/22 12:23 AM	00:23:17	2	30	38.139117	-74.6479	12	0.00%	0.00%	33.33%	66.67%	0
063S0	110	8/25/2022 1:08 AM	01:08:53	2	37	38.212967	-74.623517	4	0.00%	0.00%	75.00%	25.00%	0
063S0	111	8/25/2022 2:00 AM	02:00:36	2	35	38.13425	-74.56375	67	14.93%	11.94%	49.25%	23.88%	0
063S0	112	8/25/2022 2:41 AM	02:41:49	2	43	38.0696	-74.511667	0	0.00%	0.00%	0.00%	0.00%	0
064S0	113	8/25/2022 3:32 AM	03:32:18	2	47	37.983167	-74.475233	0	0.00%	0.00%	0.00%	0.00%	0
063S0	114	8/25/2022 4:55 AM	04:55:06	2	41	38.12715	-74.40745	388	45.88%	31.96%	21.13%	1.03%	2
063S0	115	8/25/2022 5:35 AM	05:35:48	2	45	38.1797	-74.380233	32	71.88%	15.63%	12.50%	0.00%	0
064S0	116	8/25/2022 6:39 AM	06:39:56	2	45	38.1817	-74.22725	179	91.06%	7.26%	1.12%	0.56%	149

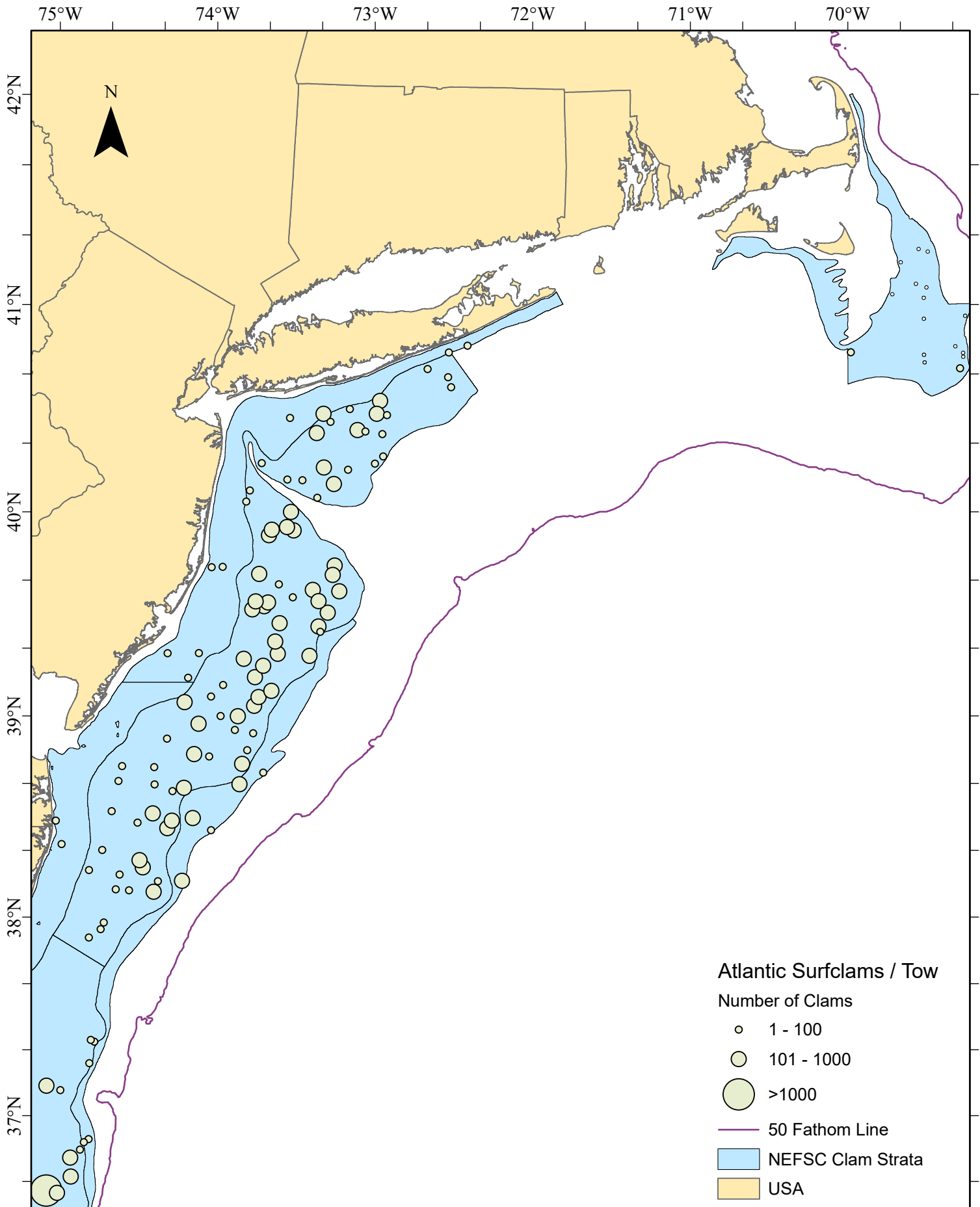
Table 1: Catch summary report from NOAA Fisheries Service, Northeast Fisheries Science Center's Surfclam / Ocean Quahog Survey 17 August – 30 August, 2022

Stratum	Station	Begin Start Dredge (EST)	Time	Leg	Depth (Fathoms)	Set Latitude	Set Longitude	Number of Surfclams	% of Surfclams 0-4.75"	% of Surfclams 4.76-5.00"	% of Surfclams 5.01-5.50"	% of Surfclams >5.50"	Number of Quahogs
064S0	117	8/25/2022 7:36 AM	07:36:58	2	50	38.278283	-74.24155	0	0.00%	0.00%	0.00%	0.00%	0
063S0	118	8/25/2022 9:12 AM	09:12:34	2	38	38.248867	-74.476467	202	46.04%	24.75%	23.76%	5.45%	0
063S0	119	8/25/2022 9:40 AM	09:40:51	2	36	38.284533	-74.496983	182	18.13%	25.82%	46.70%	9.34%	0
063S0	120	8/25/2022 11:14 AM	11:14:49	2	26	38.335383	-74.733833	35	22.86%	17.14%	51.43%	8.57%	0
063S0	121	8/25/2022 12:51 PM	12:51:15	2	19	38.528417	-74.673767	12	16.67%	41.67%	41.67%	0.00%	0
063S0	122	8/25/2022 2:03 PM	14:03:24	2	35	38.471433	-74.509617	18	38.89%	16.67%	16.67%	27.78%	0
063S0	123	8/25/2022 3:19 PM	15:19:58	2	44	38.443967	-74.320683	362	29.83%	30.94%	36.19%	3.04%	261
064S0	124	8/25/2022 4:56 PM	16:56:01	2	59	38.419133	-74.078367	0	0.00%	0.00%	0.00%	0.00%	0
064S0	125	8/25/2022 5:19 PM	17:19:03	2	56	38.433917	-74.042867	5	0.00%	40.00%	60.00%	0.00%	333
064S0	126	8/25/2022 6:18 PM	18:18:52	2	49	38.494267	-74.158883	553	95.66%	3.62%	0.72%	0.00%	189
063S0	127	8/25/2022 7:20 PM	19:20:54	2	42	38.48125	-74.291783	143	26.57%	16.78%	46.85%	9.79%	66
063S0	128	8/25/2022 8:18 PM	20:18:18	2	42	38.51735	-74.41295	199	14.07%	15.58%	49.25%	21.11%	8
063S0	129	8/25/2022 10:05 PM	22:05:46	2	27	38.6782	-74.630633	20	25.00%	20.00%	50.00%	5.00%	3
063S0	130	8/25/2022 11:01 PM	23:01:05	2	32	38.693567	-74.5319	0	0.00%	0.00%	0.00%	0.00%	0
063S0	131	8/25/2022 11:49 PM	23:49:44	2	25	38.751967	-74.60755	3	0.00%	0.00%	100.00%	0.00%	0
063S0	132	8/26/2022 1:06 AM	01:06:26	2	33	38.74685	-74.403767	1	100.00%	0.00%	0.00%	0.00%	0
063S0	133	8/26/2022 1:53 AM	01:53:17	2	22	38.81645	-74.450667	0	0.00%	0.00%	0.00%	0.00%	0
063S0	134	8/26/2022 5:06 AM	05:06:11	2	32	38.83245	-74.27825	0	0.00%	0.00%	0.00%	0.00%	0
063S0	135	8/26/2022 5:45 AM	05:45:53	2	31	38.887733	-74.32245	55	5.45%	3.64%	32.73%	58.18%	0
063S0	136	8/26/2022 6:20 AM	06:20:57	2	36	38.95765	-74.3118	0	0.00%	0.00%	0.00%	0.00%	0
063S0	137	8/26/2022 7:04 AM	07:04:22	2	30	39.043267	-74.347883	0	0.00%	0.00%	0.00%	0.00%	0
063S0	138	8/26/2022 7:58 AM	07:58:40	2	26	39.068	-74.2107	189	1.06%	1.06%	7.94%	89.95%	0
065S0	139	8/26/2022 8:58 AM	08:58:22	2	21	39.187967	-74.1883	3	0.00%	0.00%	0.00%	100.00%	0
065S0	140	8/26/2022 9:49 PM	21:49:04	2	14	39.308633	-74.318717	3	0.00%	0.00%	0.00%	100.00%	0
063S0	141	8/27/2022 1:10 AM	01:10:09	3	38	39.001167	-74.110017	0	0.00%	0.00%	0.00%	0.00%	0
063S0	142	8/27/2022 1:50 AM	01:50:54	3	35	38.961383	-74.122267	132	6.82%	4.55%	20.45%	68.18%	17
063S0	143	8/27/2022 2:51 AM	02:51:11	3	36	38.99935	-73.982217	65	23.08%	3.08%	36.92%	36.92%	3
063S0	144	8/27/2022 3:22 AM	03:22:33	3	37	39.037933	-74.003517	0	0.00%	0.00%	0.00%	0.00%	0
063S0	145	8/27/2022 4:01 AM	04:01:40	3	36	39.095567	-74.042883	4	75.00%	25.00%	0.00%	0.00%	0
065S0	146	8/27/2022 5:54 AM	05:54:34	3	26	39.309333	-74.120083	10	20.00%	0.00%	0.00%	80.00%	0
065S0	147	8/27/2022 7:11 AM	07:11:21	3	22	39.449983	-74.048367	0	0.00%	0.00%	0.00%	0.00%	0
065S0	148	8/27/2022 9:30 AM	09:30:15	3	14	39.7298	-74.039017	2	100.00%	0.00%	0.00%	0.00%	0
065S0	149	8/27/2022 10:07 AM	10:07:21	3	22	39.7317	-73.969067	3	33.33%	0.00%	0.00%	66.67%	0
065S0	150	8/27/2022 10:48 AM	10:48:27	3	20	39.7946	-73.9418	0	0.00%	0.00%	0.00%	0.00%	0
065S0	151	8/27/2022 2:34 PM	14:34:20	3	24	40.273033	-73.848933	0	0.00%	0.00%	0.00%	0.00%	0
065S0	152	8/27/2022 3:46 PM	15:46:24	3	30	40.419933	-73.8229	0	0.00%	0.00%	0.00%	0.00%	0
065S0	153	8/27/2022 4:18 PM	16:18:56	3	18	40.473933	-73.861917	0	0.00%	0.00%	0.00%	0.00%	0
065S0	154	8/27/2022 4:55 PM	16:55:31	3	17	40.515	-73.80295	0	0.00%	0.00%	0.00%	0.00%	0
063S0	155	8/27/2022 6:29 PM	18:29:40	3	26	40.352033	-73.7624	0	0.00%	0.00%	0.00%	0.00%	0
063S0	156	8/27/2022 7:31 PM	19:31:22	3	31	40.236067	-73.720917	44	11.36%	4.55%	45.45%	38.64%	2
063S0	157	8/27/2022 9:00 PM	21:00:51	3	36	40.1565	-73.558233	9	22.22%	0.00%	66.67%	11.11%	0
063S0	158	8/27/2022 9:45 PM	21:45:48	3	40	40.153133	-73.4626	9	55.56%	11.11%	11.11%	22.22%	9
063S0	159	8/27/2022 10:48 PM	22:48:39	3	41	40.068133	-73.36825	81	51.85%	17.28%	24.69%	6.17%	143
063S0	160	8/27/2022 11:46 PM	23:46:09	3	40	40.134983	-73.262933	118	39.83%	22.03%	25.42%	12.71%	324
063S0	161	8/28/2022 12:49 AM	00:49:24	3	36	40.215083	-73.326567	192	25.52%	12.50%	40.10%	21.88%	141
063S0	162	8/28/2022 2:02 AM	02:02:36	3	39	40.204067	-73.172933	38	73.68%	5.26%	10.53%	10.53%	330
063S0	163	8/28/2022 2:56 AM	02:56:09	3	42	40.223883	-73.066217	0	0.00%	0.00%	0.00%	0.00%	492
063S0	164	8/28/2022 3:47 AM	03:47:06	3	40	40.23365	-73.002233	1	100.00%	0.00%	0.00%	0.00%	176
063S0	165	8/28/2022 4:24 AM	04:24:03	3	43	40.268583	-72.94995	14	85.71%	14.29%	0.00%	0.00%	125
063S0	166	8/28/2022 5:52 AM	05:52:18	3	40	40.37675	-72.955133	1	100.00%	0.00%	0.00%	0.00%	227
063S0	167	8/28/2022 6:36 AM	06:36:59	3	36	40.389283	-73.062667	30	56.67%	13.33%	23.33%	6.67%	198
063S0	168	8/28/2022 7:20 AM	07:20:07	3	37	40.3963	-73.112883	270	37.04%	20.37%	34.07%	8.52%	801
063S0	169	8/28/2022 8:49 AM	08:49:02	3	28	40.3818	-73.371783	504	26.79%	10.91%	36.51%	25.79%	52

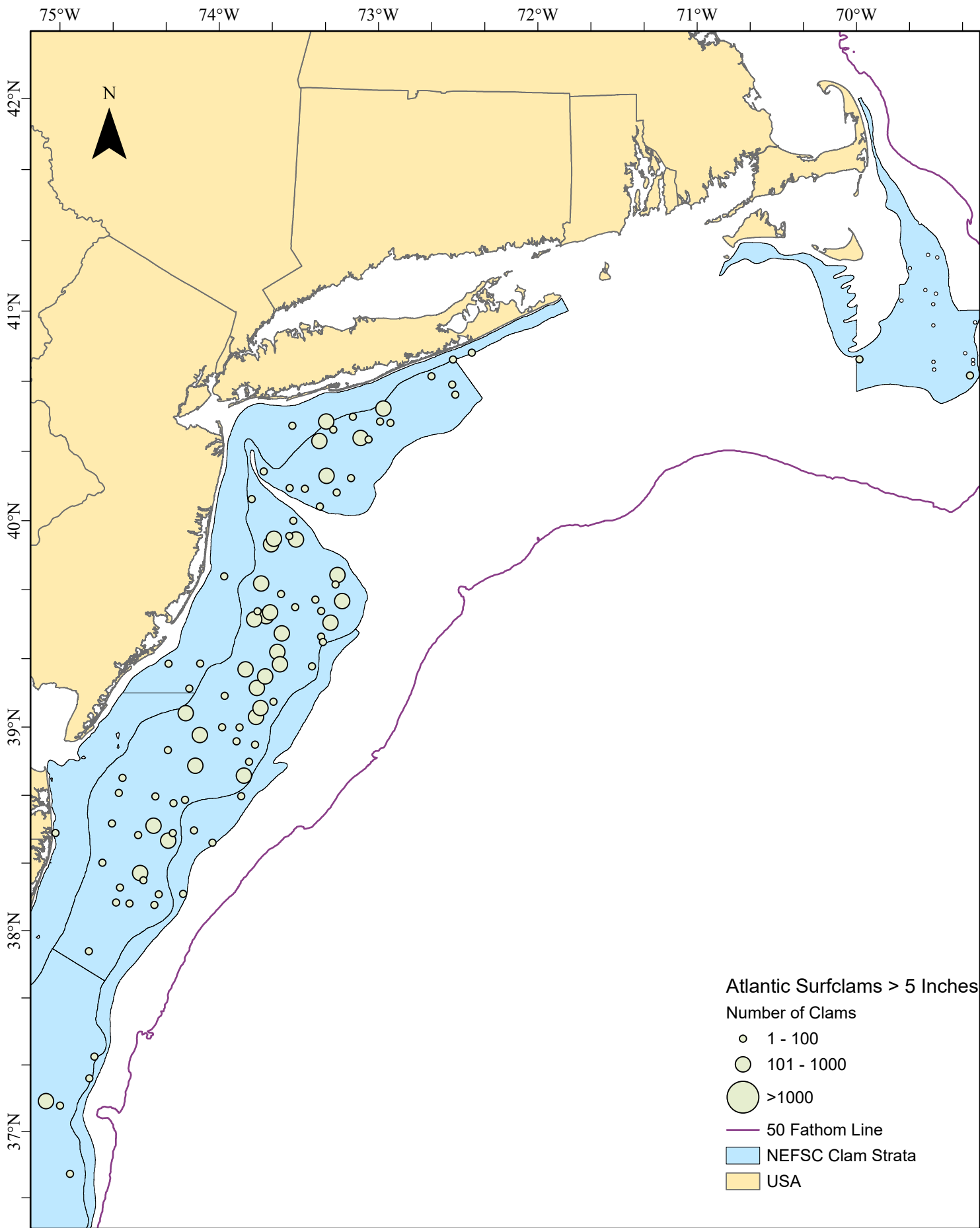
Table 1: Catch summary report from NOAA Fisheries Service, Northeast Fisheries Science Center's Surfclam / Ocean Quahog Survey 17 August – 30 August, 2022

Stratum	Station	Begin Start Dredge (EST)	Time	Leg	Depth (Fathoms)	Set Latitude	Set Longitude	Number of Surfclams	% of Surfclams 0-4.75"	% of Surfclams 4.76-5.00"	% of Surfclams 5.01-5.50"	% of Surfclams >5.50"	Number of Quahogs
063S0	170	8/28/2022 9:44 AM	09:44:00	3	30	40.351017	-73.470133	0	0.00%	0.00%	0.00%	0.00%	0
065S0	171	8/28/2022 10:46 AM	10:46:41	3	21	40.454817	-73.5413	4	25.00%	0.00%	50.00%	25.00%	0
065S0	172	8/28/2022 11:37 AM	11:37:07	3	23	40.4731	-73.441017	0	0.00%	0.00%	0.00%	0.00%	0
065S0	173	8/28/2022 12:31 PM	12:31:37	3	22	40.47495	-73.328617	238	14.29%	7.14%	18.91%	59.66%	1
063S0	174	8/28/2022 1:30 PM	13:30:54	3	28	40.43595	-73.2842	14	28.57%	14.29%	35.71%	21.43%	104
063S0	175	8/28/2022 2:40 PM	14:40:09	3	29	40.4977	-73.161317	3	33.33%	0.00%	33.33%	33.33%	11
063S0	176	8/28/2022 3:35 PM	15:35:27	3	32	40.5086	-73.0418	0	0.00%	0.00%	0.00%	0.00%	0
063S0	177	8/28/2022 4:19 PM	16:19:44	3	27	40.537	-72.969717	274	29.20%	15.69%	35.04%	20.07%	17
063S0	178	8/28/2022 5:01 PM	17:01:07	3	38	40.474917	-72.990517	107	49.53%	15.89%	26.17%	8.41%	241
063S0	179	8/28/2022 5:44 PM	17:44:48	3	37	40.468483	-72.925667	35	65.71%	8.57%	17.14%	8.57%	32
063S0	180	8/28/2022 7:24 PM	19:24:46	3	38	40.562433	-72.7249	0	0.00%	0.00%	0.00%	0.00%	0
063S0	181	8/28/2022 8:30 PM	20:30:17	3	39	40.546233	-72.582033	0	0.00%	0.00%	0.00%	0.00%	363
063S0	182	8/28/2022 9:24 PM	21:24:34	3	42	40.500717	-72.4861	0	0.00%	0.00%	0.00%	0.00%	875
063S0	183	8/28/2022 10:22 PM	22:22:33	3	43	40.575017	-72.398233	0	0.00%	0.00%	0.00%	0.00%	268
063S0	184	8/28/2022 11:18 PM	23:18:40	3	38	40.60305	-72.5185	31	38.71%	22.58%	25.81%	12.90%	258
063S0	185	8/28/2022 11:54 PM	23:54:32	3	35	40.651233	-72.5377	6	66.67%	16.67%	0.00%	16.67%	458
063S0	186	8/29/22 12:55 AM	00:55:59	3	30	40.690617	-72.6679	1	0.00%	0.00%	100.00%	0.00%	9
065S0	187	8/29/2022 2:16 AM	02:16:46	3	26	40.770333	-72.5329	10	20.00%	0.00%	40.00%	40.00%	4
065S0	188	8/29/2022 3:18 AM	03:18:17	3	26	40.802867	-72.414533	6	66.67%	0.00%	16.67%	16.67%	81
066S0	189	8/29/2022 4:08 PM	16:08:52	3	26	40.77135	-69.98085	9	0.00%	11.11%	0.00%	88.89%	24
066S0	190	8/29/2022 8:20 PM	20:20:01	3	56	40.694433	-69.28715	1	0.00%	0.00%	0.00%	100.00%	4
066S0	191	8/29/2022 9:55 PM	21:55:55	3	47	40.907617	-69.35445	0	0.00%	0.00%	0.00%	0.00%	0
066S0	192	8/30/2022 1:32 AM	01:32:05	3	40	41.082417	-69.718333	0	0.00%	0.00%	0.00%	0.00%	0
066S0	193	8/30/2022 2:47 AM	02:47:03	3	26	41.104717	-69.555483	0	0.00%	0.00%	0.00%	0.00%	0
066S0	194	8/30/2022 3:42 AM	03:42:52	3	23	41.154717	-69.56325	0	0.00%	0.00%	0.00%	0.00%	0
066S0	195	8/30/2022 4:49 AM	04:49:05	3	24	41.1914	-69.463217	0	0.00%	0.00%	0.00%	0.00%	0
066S0	196	8/30/2022 5:42 AM	05:42:27	3	23	41.255183	-69.548367	0	0.00%	0.00%	0.00%	0.00%	0
066S0	197	8/30/2022 6:40 AM	06:40:30	3	26	41.367067	-69.586833	0	0.00%	0.00%	0.00%	0.00%	0
066S0	198	8/30/2022 7:07 AM	07:07:44	3	19	41.39845	-69.630683	0	0.00%	0.00%	0.00%	0.00%	0

NEFSC Atlantic Surfclam and Ocean Quahog Survey
2022 NOAA Fisheries Service Atlantic Surfclam - Number/Tow



NEFSC Atlantic Surfclam and Ocean Quahog Survey 2022 NOAA Fisheries Service Atlantic Surfclam - Number/Tow Greater Than 5 Inches



NEFSC Surfclam and Ocean Quahog Survey
2022 NOAA Fisheries Service Atlantic Ocean Quahog - Number/Tow

