

**The American Samoa Longline Limited-entry Fishery  
Annual Report  
1 January-31 December 2021**

Fisheries Research and Monitoring Division (FRMD)  
Pacific Islands Fisheries Science Center (PIFSC), NOAA Fisheries  
NOAA Inouye Regional Center  
1845 Wasp Boulevard, Building 176, Honolulu, HI 96818

This annual report for the 1 January-31 December 2021 period contains summary data of fishing effort and catch statistics as reported on longline log sheets for the American Samoa longline limited-entry fishery. Data in this report originate from the PIFSC Information Management System (Oracle) table LLDS\_REPORT\_STATS\_PRELIM\_AS, representing RFMO data received as of 15 September 2022. Catch and effort statistics are based on date of longline haul. When a statistic (number of vessels, trips) involves dates of haul in two summary periods (i.e., years, semi-annual, quarters), the item is counted in both summary periods. Thus, a trip total is for “partial and completed” trips. As such, these statistics are not additive (i.e., sum of four quarters is not the total for the year).

The following tables show fishery statistics for the stated time period, area, and set type, and include effort (number of vessels, trips, sets, and hooks set). For each listed species, organized by pelagic management unit species (PMUS) groups of billfish, shark, tuna, and other, the table includes the number of fish caught, kept, and released, and the catch per unit effort (CPUE), measured as the number of fish caught per 1000 hooks.

Additional figures graph catch numbers and effort for important species for the stated time period, area, and set type for years 2001-2021.

References:

Pacific Islands Fisheries Science Center, 2022: American Samoa Longline Logbook, <https://www.fisheries.noaa.gov/inport/item/1775>

**Table 1.** American Samoa longline limited-entry fishery annual statistics for all fishing areas and all fishing categories (set types), including effort (number of vessels, trips, sets, and hooks set). For each listed species, organized by pelagic management unit species (PMUS) groups of billfish, shark, tuna, and other, the table includes the number of fish caught, kept, and released, and the catch per unit effort (CPUE, number per 1000 hooks, calculated as the sum of fish caught divided by the sum of hooks set). Data Source: PIFSC Information Management System, Longline Logbook Data.

**Report Coverage**

Time Period 1 January-31 December 2021  
 Set Types All Sets  
 Fishing Area All Areas

Number of vessels active	11
Number of trips (partial or completed)	41
Number of sets	1,549
Number of hooks set	4,464,858

Pelagic Management Unit Species (PMUS)	Number Caught	Number Kept	Number Released	CPUE Number Caught per 1000 Hooks
<b>PMUS</b>				
<b>Billfish PMUS</b>				
Blue marlin	603	586	17	0.14
Striped marlin	100	99	1	0.02
Shortbill spearfish	87	42	45	0.02
Swordfish	98	59	39	0.02
Other billfishes	31	27	4	0.01
<b>Total</b>	<b>919</b>	<b>813</b>	<b>106</b>	<b>0.21</b>
<b>Shark PMUS</b>				
Blue shark	1,377	0	1,377	0.31
Mako sharks	71	0	71	0.02
Thresher sharks	139	0	139	0.03
Oceanic whitetip shark	548	0	548	0.12
Silky shark	583	0	583	0.13
<b>Total</b>	<b>2,718</b>	<b>0</b>	<b>2,718</b>	<b>0.61</b>
<b>Tuna PMUS</b>				
Albacore	41,576	41,293	283	9.31
Bigeye tuna	1,196	1,189	7	0.27
Yellowfin tuna	10,457	10,248	209	2.34
Bluefin tuna	1	1	0	0.00
Skipjack tuna	6,795	6,717	78	1.52
Other tunas	0	0	0	0.00
<b>Total</b>	<b>60,025</b>	<b>59,448</b>	<b>577</b>	<b>13.44</b>
<b>Other PMUS</b>				
Mahimahi	85	85	0	0.02
Moonfish	37	31	6	0.01
Wahoo	1,491	1,477	14	0.33
Oilfish	1,045	30	1,015	0.23
Pomfret	424	21	403	0.09
<b>Total</b>	<b>3,082</b>	<b>1,644</b>	<b>1,438</b>	<b>0.69</b>
<b>Total PMUS</b>	<b>66,744</b>	<b>61,905</b>	<b>4,839</b>	<b>14.95</b>
Non-PMUS Sharks	0	0	0	0.00
<b>Total Non-PMUS</b>	<b>525</b>	<b>118</b>	<b>407</b>	<b>0.12</b>
<b>Total All Species</b>	<b>67,269</b>	<b>62,023</b>	<b>5,246</b>	<b>15.07</b>

## Number of Vessels

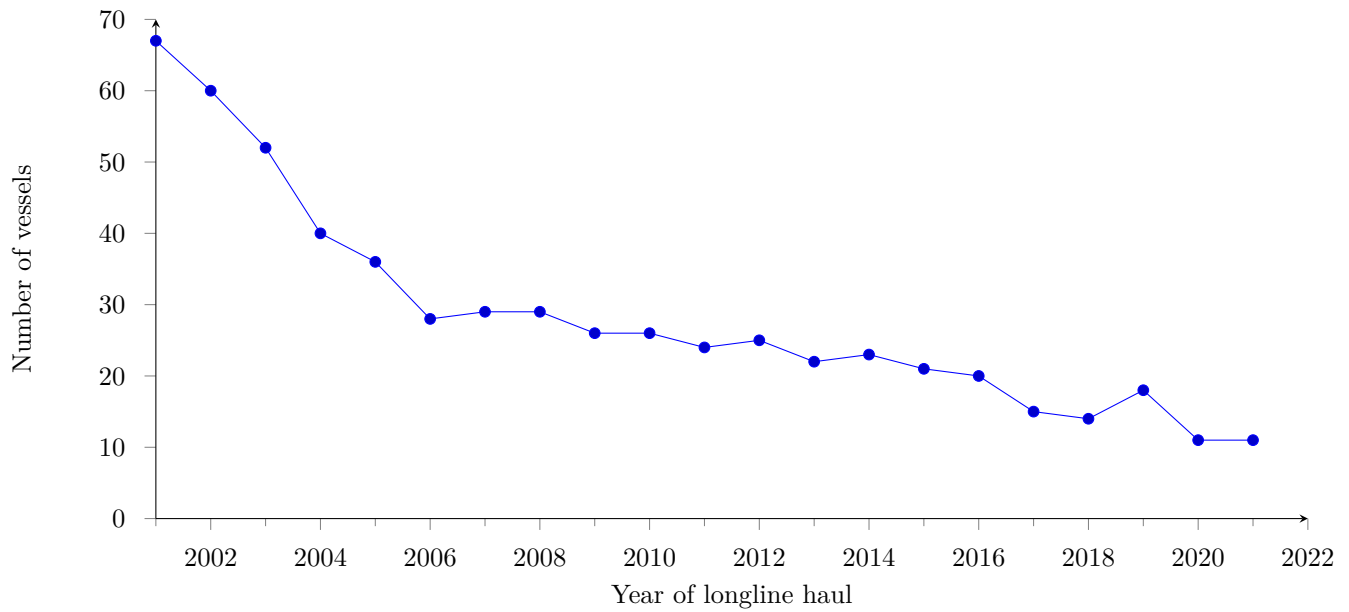


Figure 1: Annual number of active longline fishing vessels based in American Samoa in haul years 2001-2021.

## Number of Trips

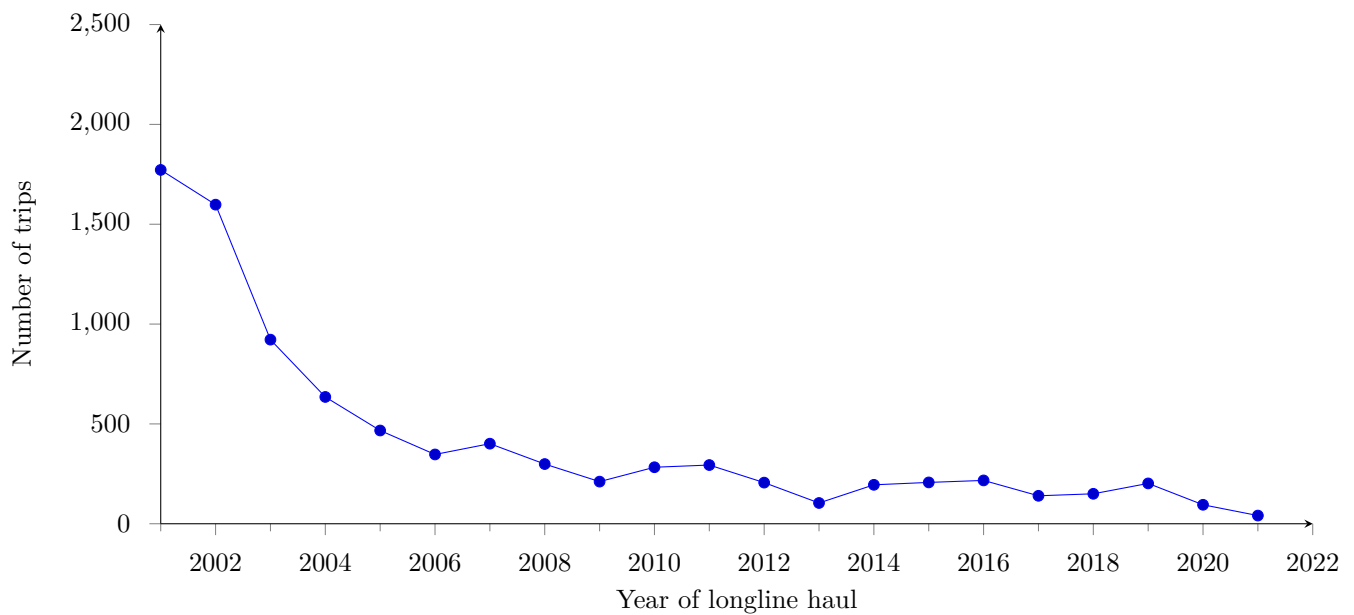


Figure 2: Annual number of trips by longline fishing vessels based in American Samoa in haul years 2001-2021.

## Number of Sets

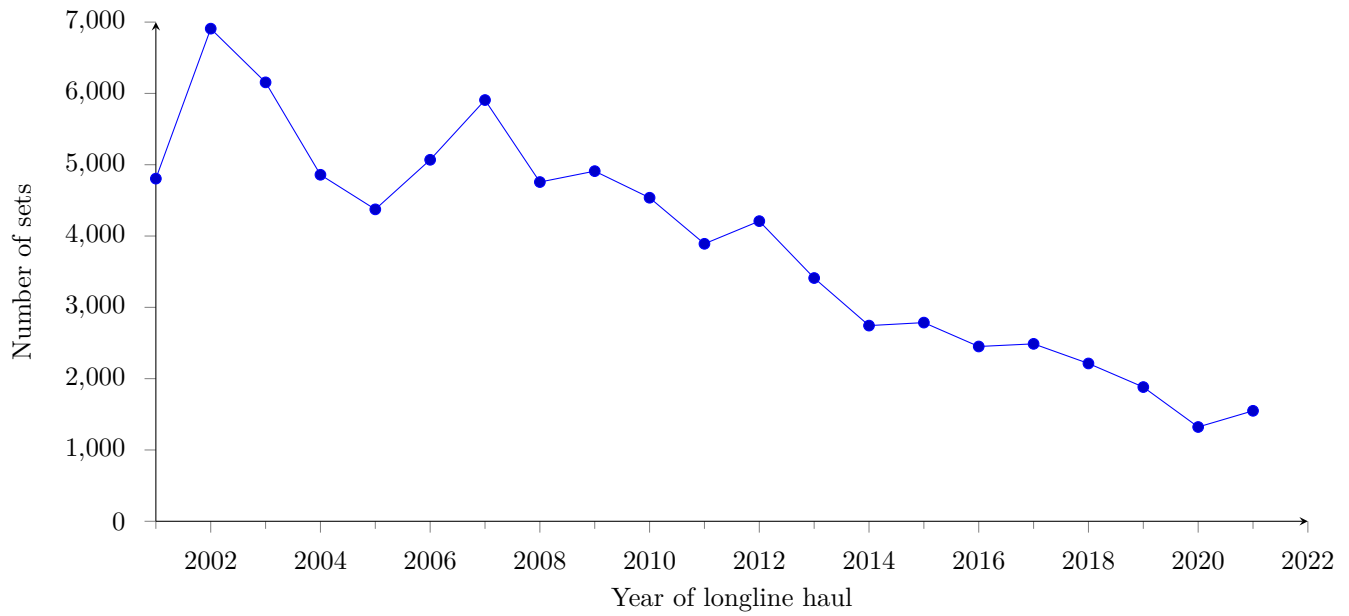


Figure 3: Annual number of sets by longline fishing vessels based in American Samoa in haul years 2001-2021.

## Number of Hooks

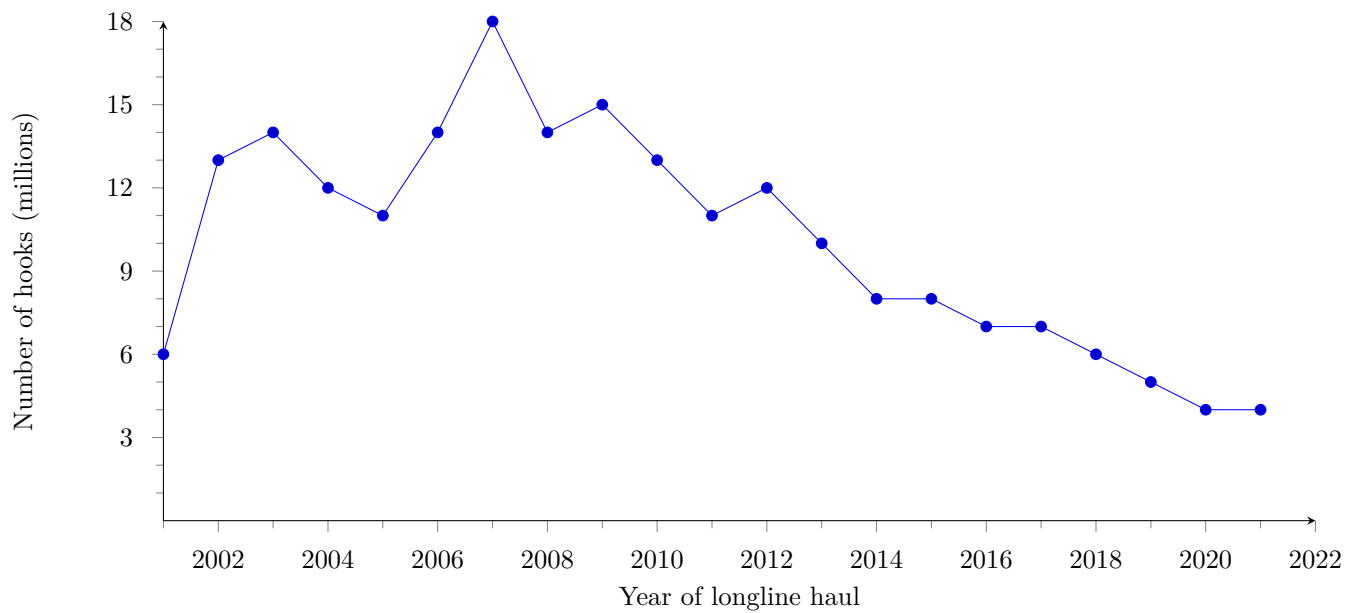


Figure 4: Number of hooks in millions, set by vessels based in American Samoa by year, 2001-2021.

## Albacore Catch

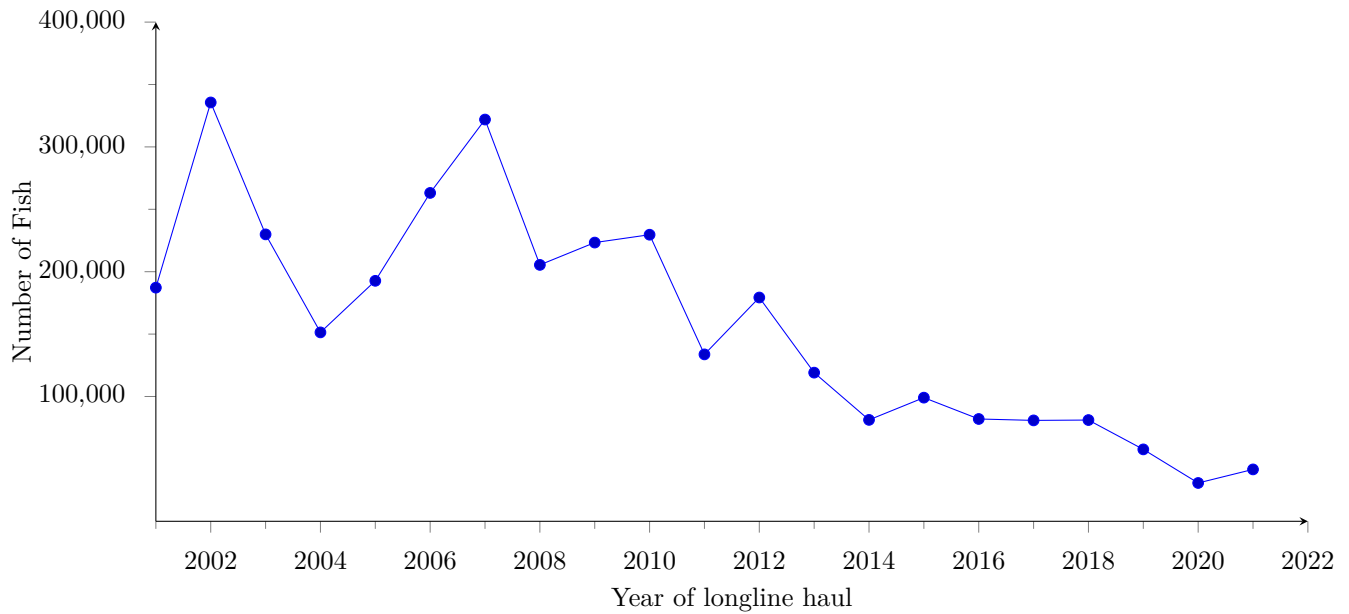


Figure 5: Annual catch (kept + released) of albacore tuna by longline vessels based in American Samoa in haul years 2001-2021.

## Albacore Catch per Unit Effort

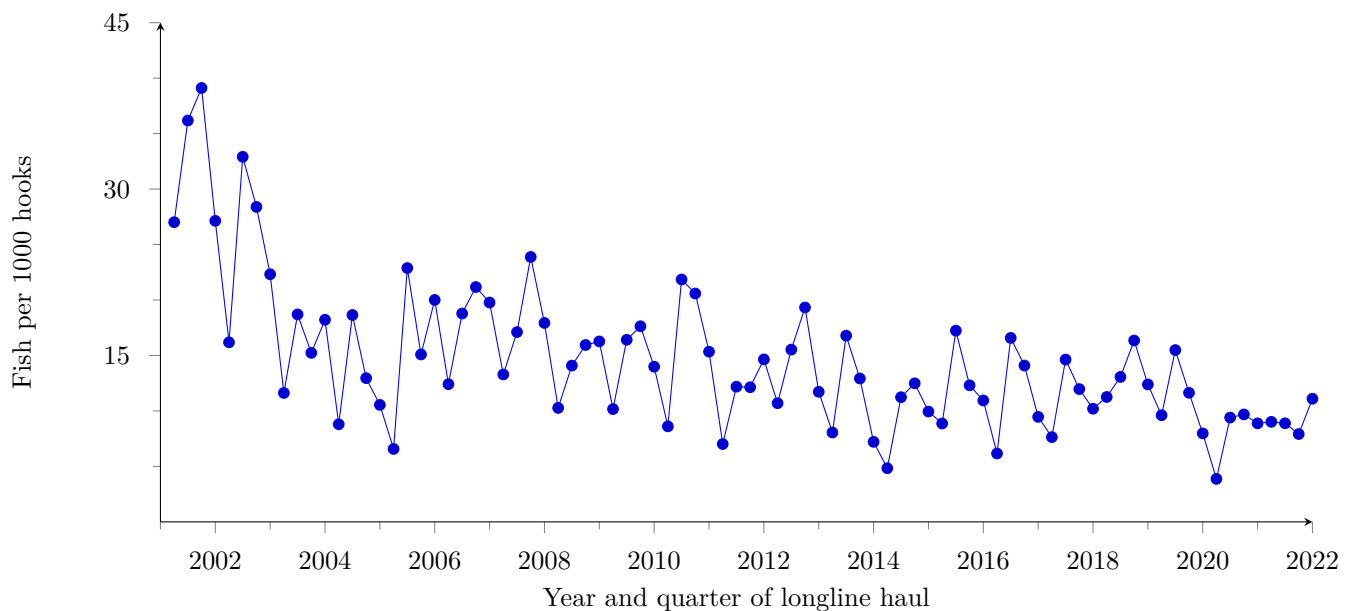


Figure 6: Quarterly catch per unit of effort (CPUE) of albacore tuna (kept + released, per 1000 hooks) by longline vessels based in American Samoa in haul years 2001-2021.

## Bigeye Tuna Catch

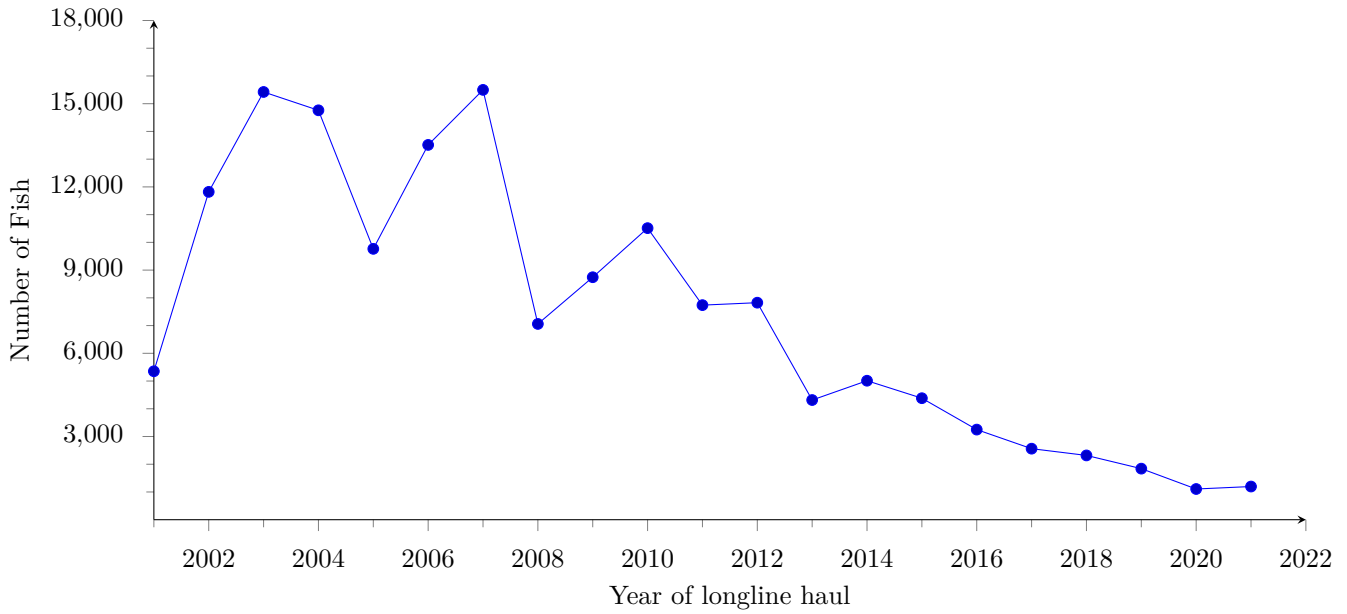


Figure 7: Annual catch (kept + released) of bigeye tuna by longline vessels based in American Samoa in haul years 2001-2021.

## Bigeye Tuna Catch per Unit Effort

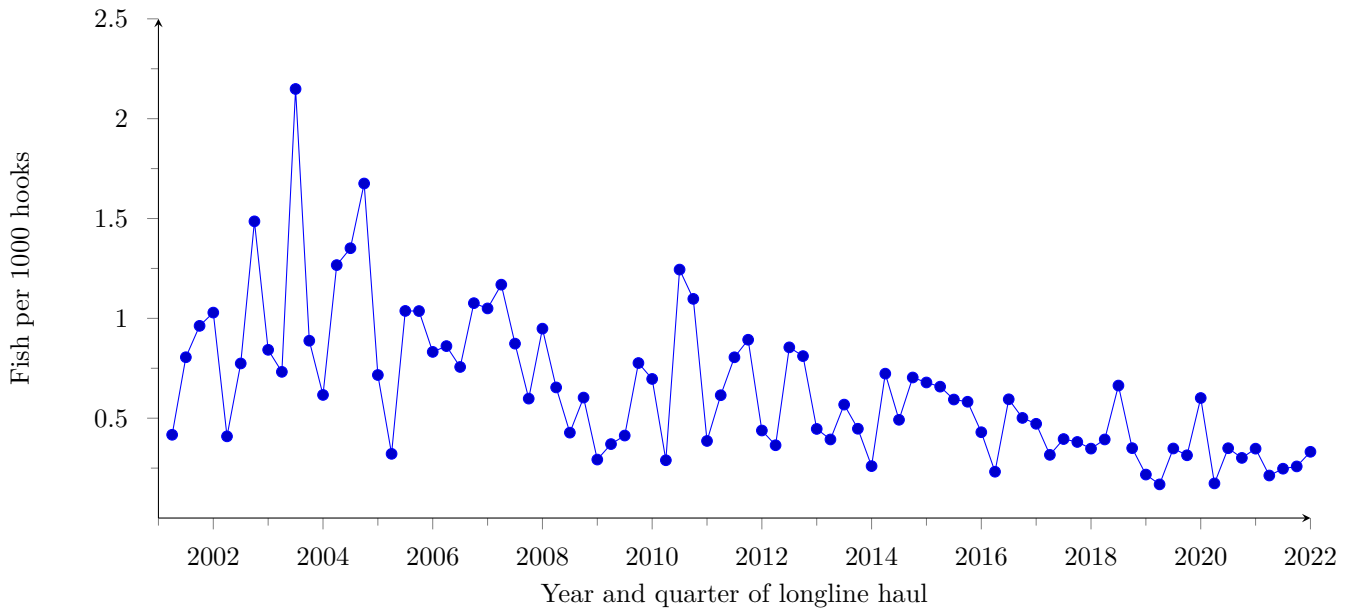


Figure 8: Quarterly catch per unit of effort (CPUE) of bigeye tuna (kept + released per 1000 hooks) by longline vessels based in American Samoa in haul years 2001-2021.

## Yellowfin Tuna Catch

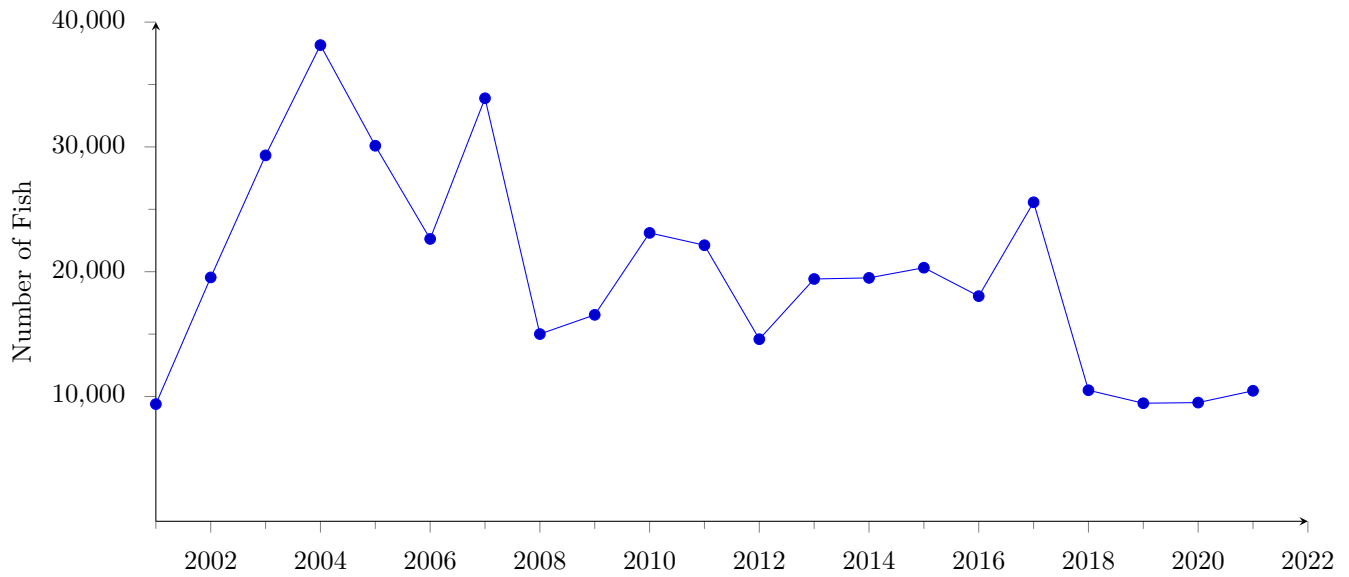


Figure 9: Annual catch (kept + released) of yellowfin tuna by longline vessels based in American Samoa in haul years 2001-2021.

## Yellowfin Tuna Catch per Unit Effort

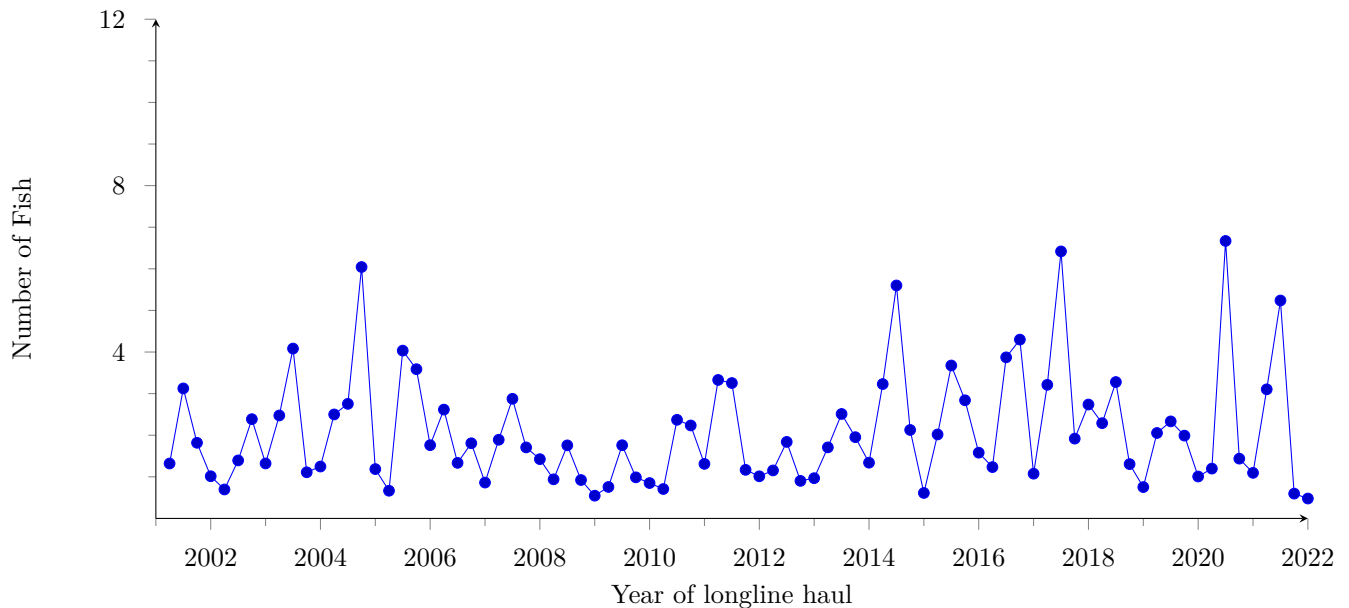


Figure 10: Quarterly catch per unit of effort (CPUE) of yellowfin tuna (kept + released, per 1000 hooks) by longline vessels based in American Samoa in haul years 2001-2021.

## Skipjack Tuna Catch

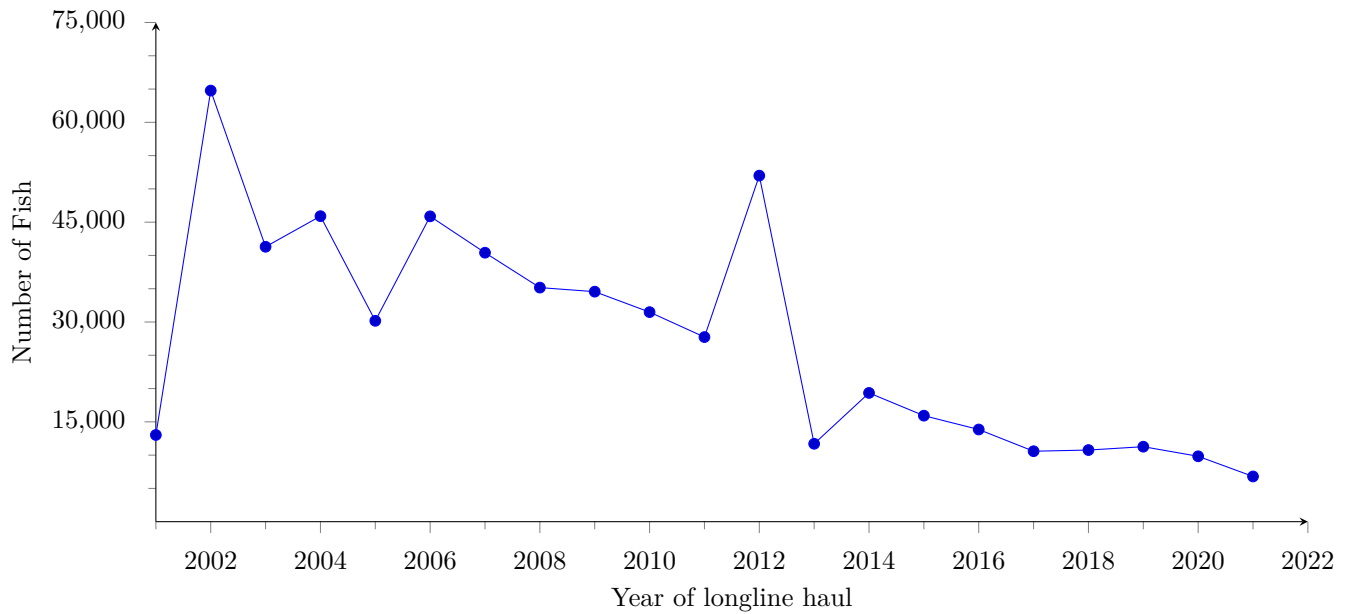


Figure 11: Annual catch (kept + released) of skipjack tuna by longline vessels based in American Samoa in haul years 2001-2021.

## Skipjack Tuna Catch per Unit Effort

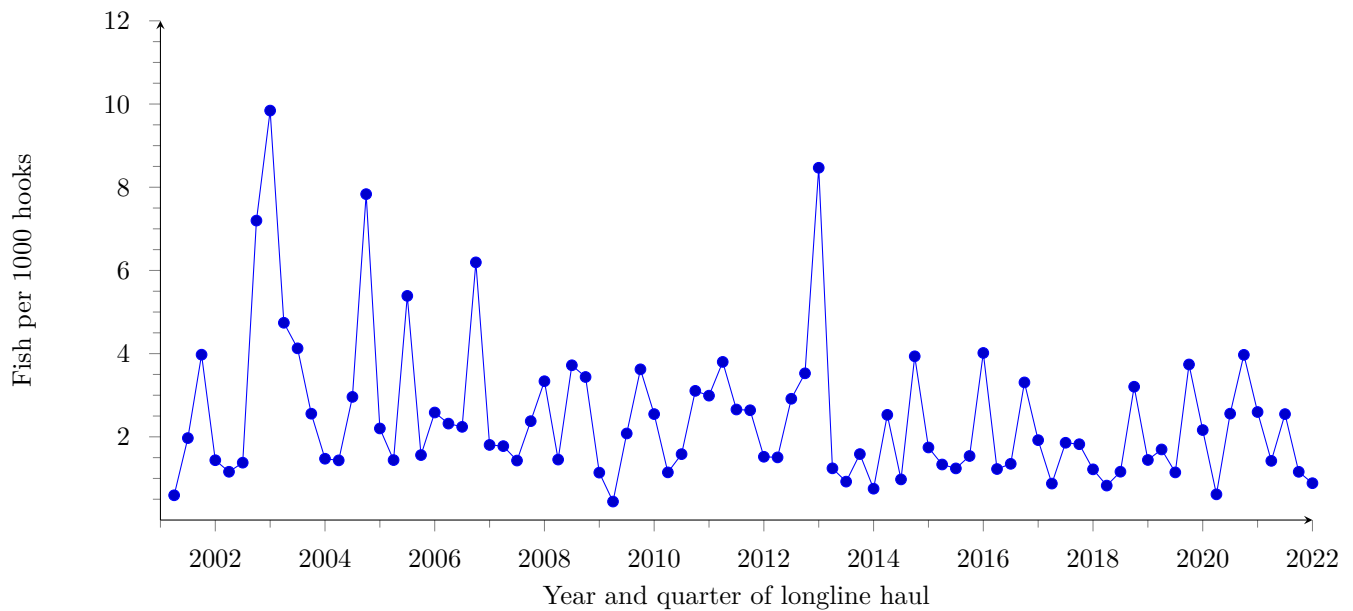


Figure 12: Quarterly catch per unit of effort (CPUE) of skipjack tuna (kept + released, per 1000 hooks) by longline vessels based in American Samoa in haul years 2001-2021.



## Mahimahi Catch

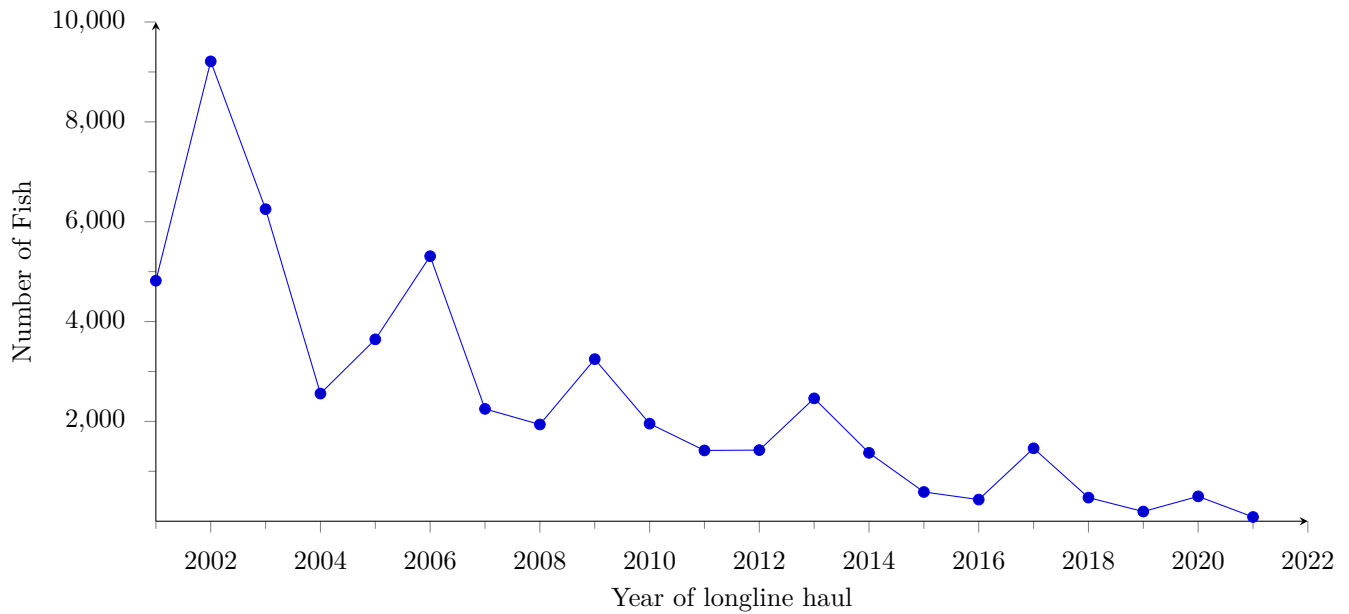


Figure 13: Annual catch (kept + released) of mahimahi by longline vessels based in American Samoa in haul years 2001-2021.

## Mahimahi Catch per Unit Effort

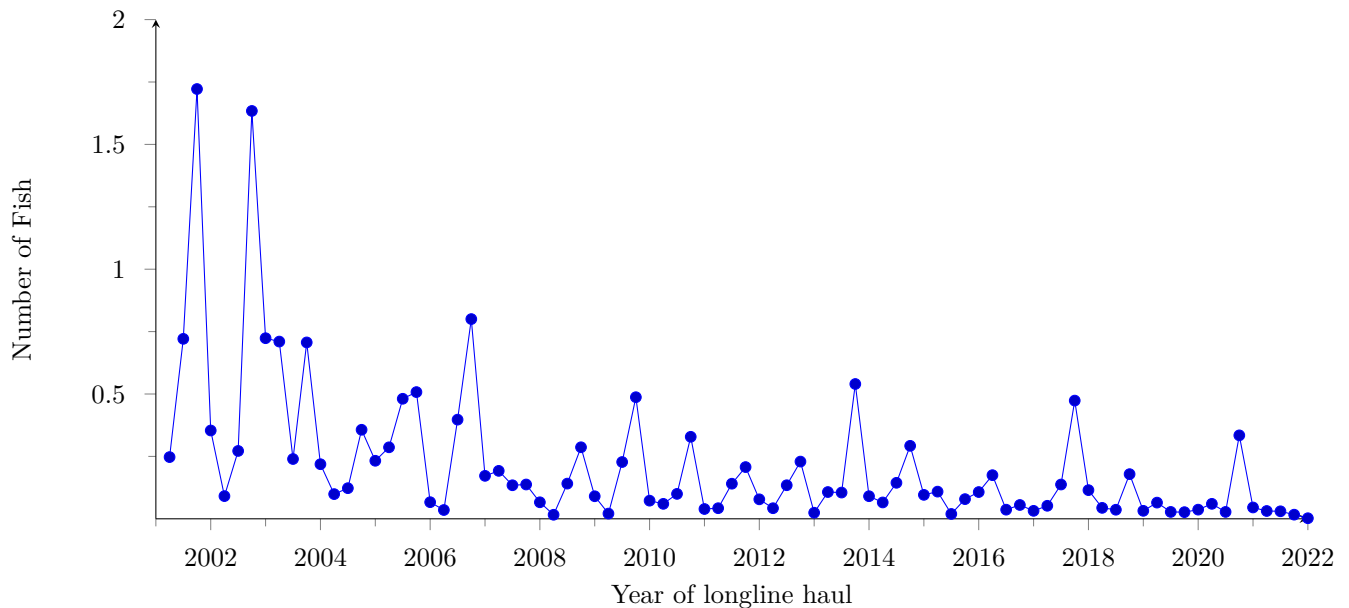


Figure 14: Quarterly catch per unit of effort (CPUE) of mahimahi (kept + released, per 1000 hooks) by longline vessels based in American Samoa in haul years 2001-2021.

## Billfish Catch

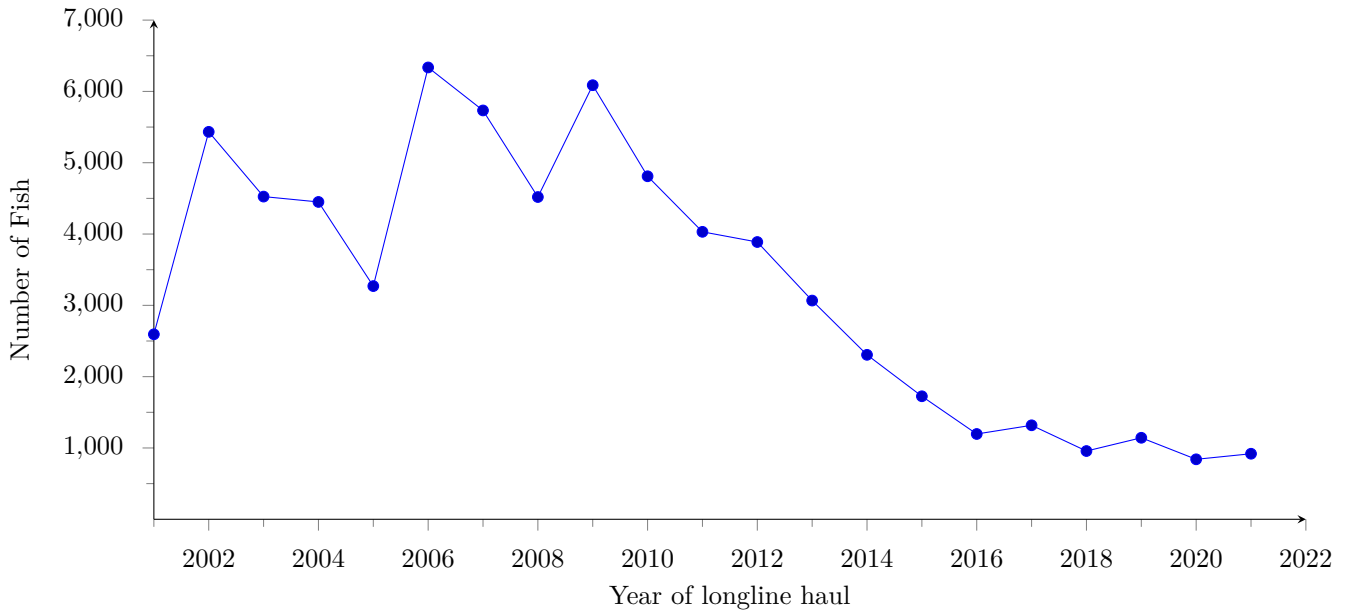


Figure 15: Annual catch (kept + released) of billfish by longline vessels based in American Samoa in haul years 2001-2021.

## Billfish Catch per Unit Effort

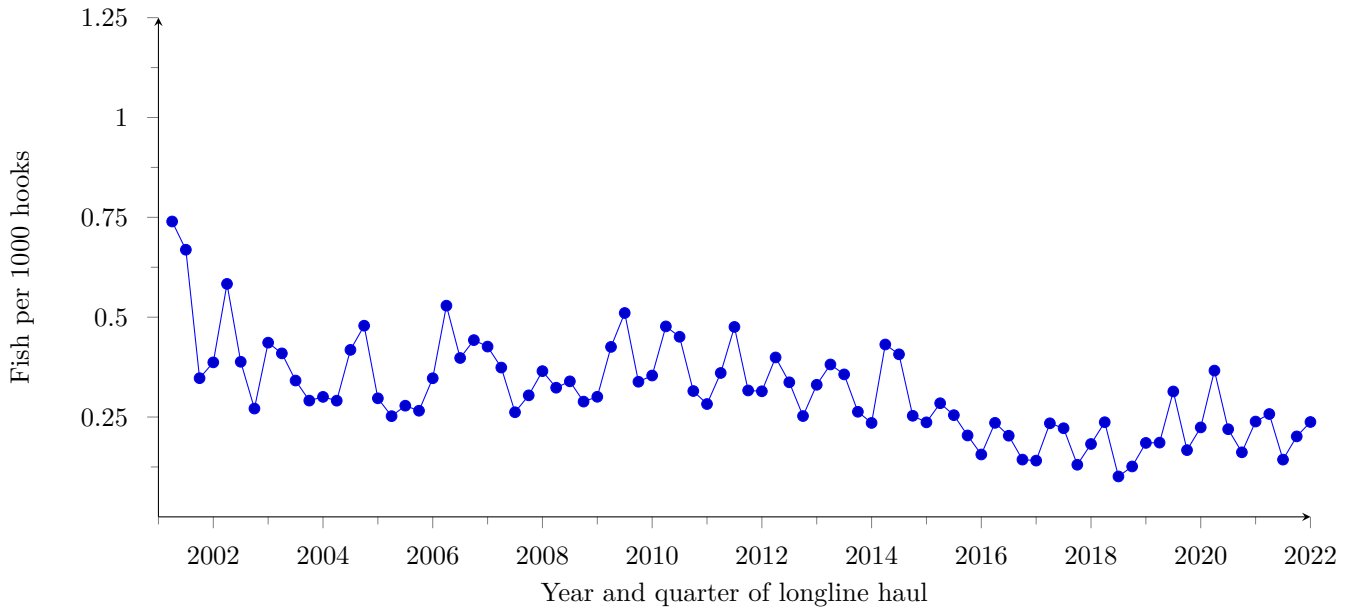


Figure 16: Quarterly catch per unit of effort (CPUE) of billfish (kept + released, per 1000 hooks) by longline vessels based in American Samoa in haul years 2001-2021.

## Shark Catch

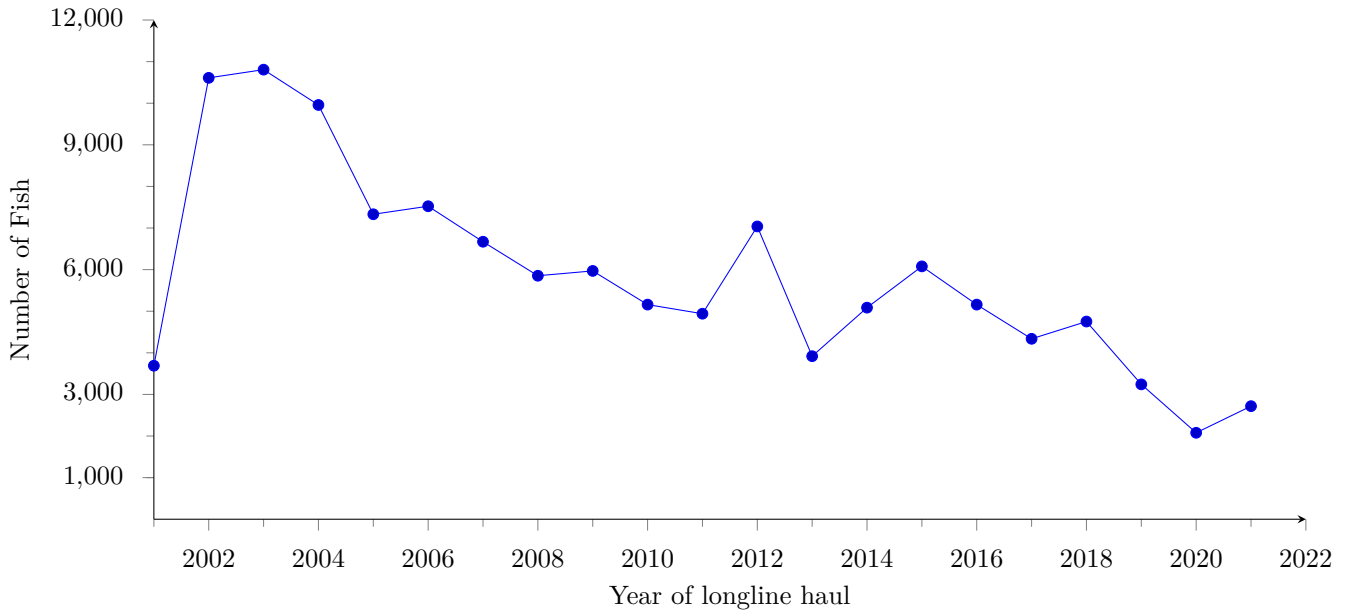


Figure 17: Annual catch (kept + released) of sharks by longline vessels based in American Samoa in haul years 2001-2021.

## Shark Catch per Unit Effort

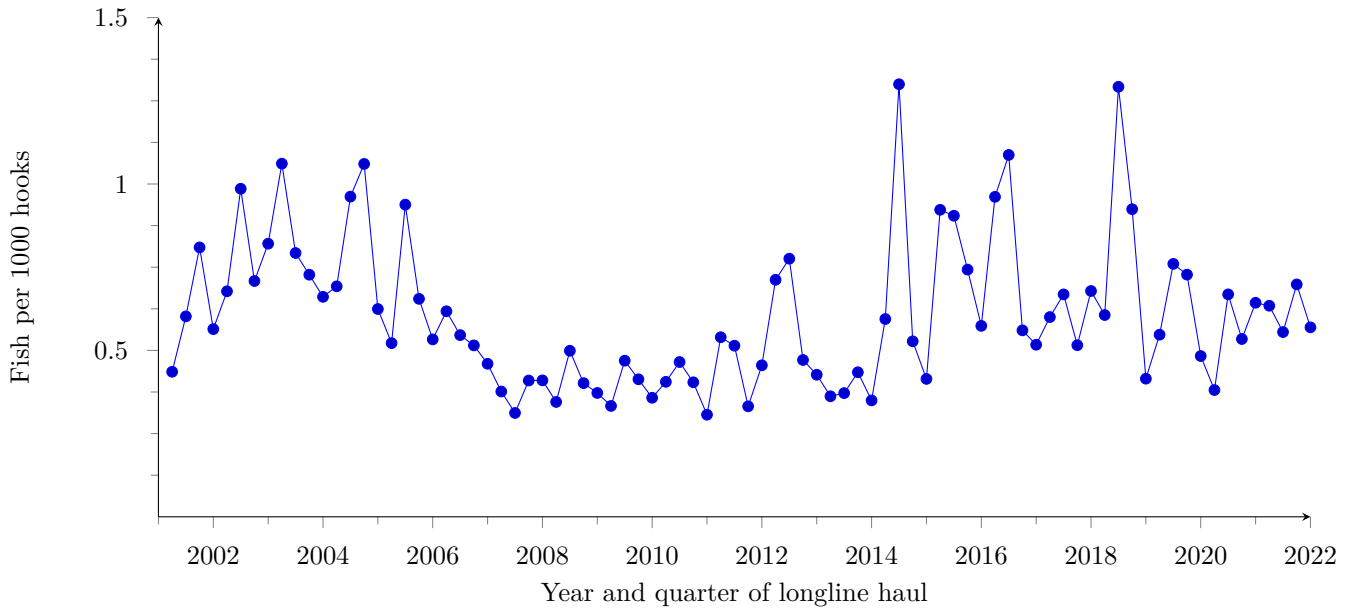


Figure 18: Quarterly catch per unit of effort (CPUE) of sharks (kept + released, per 1000 hooks) by longline vessels based in American Samoa in haul years 2001-2021.

## Wahoo Catch

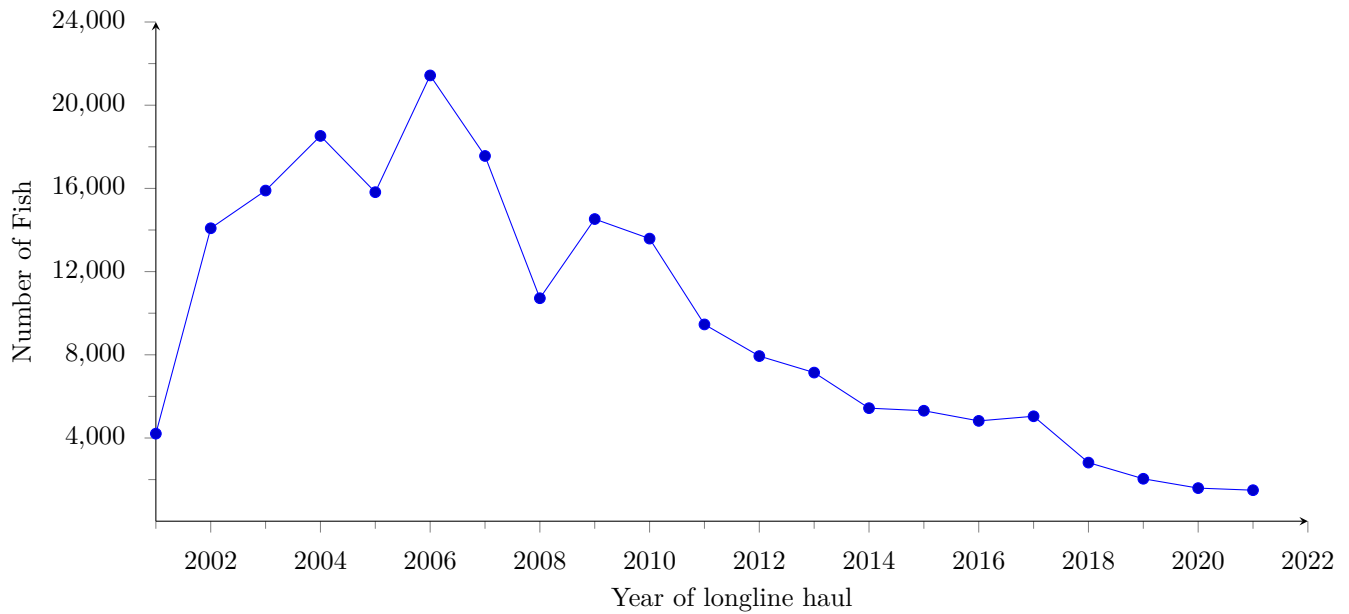


Figure 19: Annual catch (kept + released) of wahoo by longline vessels based in American Samoa in haul years 2001-2021.

## Wahoo Catch per Unit Effort

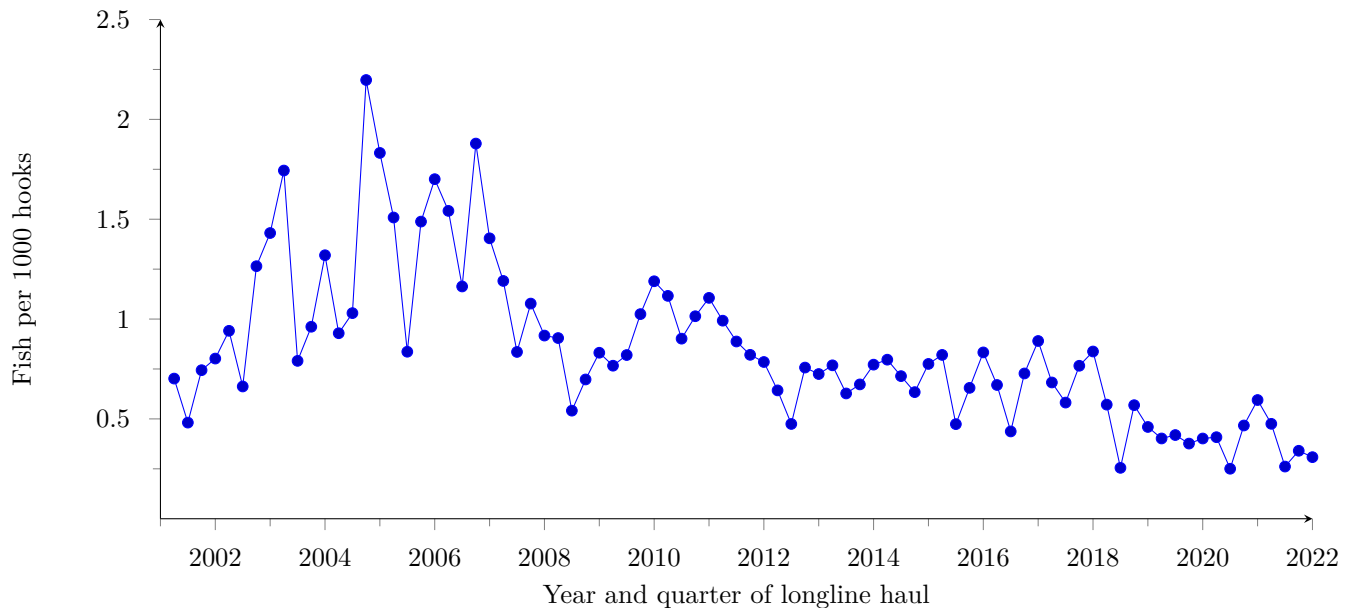


Figure 20: Quarterly catch per unit of effort (CPUE) of wahoo (kept + released, per 1000 hooks) by longline vessels based in American Samoa in haul years 2001-2021.