



Enhancing PMW Satellite Precipitation Estimation: Detecting Convective Class

VELJKO PETKOVIĆ

*Earth System Science Interdisciplinary Center/Cooperative Institute for Satellite Earth System Studies,
University of Maryland, College Park, College Park, Maryland, and Department of Atmospheric Science,
Colorado State University, Fort Collins, Colorado*

MARKO ORESCANIN

Department of Computer Science, Naval Postgraduate School, Monterey, California

PIERRE KIRSTETTER

*School of Meteorology, and School of Civil Engineering and Environmental Science, and Advanced Radar Research Center,
University of Oklahoma, and NOAA/National Severe Storms Laboratory, Norman, Oklahoma*

CHRISTIAN KUMMEROW

Department of Atmospheric Science, Colorado State University, Fort Collins, Colorado

RALPH FERRARO

*Earth System Science Interdisciplinary Center/Cooperative Institute for Satellite Earth System Studies,
University of Maryland, College Park, and NOAA/NESDIS/STAR, College Park, Maryland*

(Manuscript received 26 January 2019, in final form 27 August 2019)

ABSTRACT

A decades-long effort in observing precipitation from space has led to continuous improvements of satellite-derived passive microwave (PMW) large-scale precipitation products. However, due to a limited ability to relate observed radiometric signatures to precipitation type (convective and stratiform) and associated precipitation rate variability, PMW retrievals are prone to large systematic errors at instantaneous scales. The present study explores the use of deep learning approach in extracting the information content from PMW observation vectors to help identify precipitation types. A deep learning neural network model (DNN) is developed to retrieve the convective type in precipitating systems from PMW observations. A 12-month period of Global Precipitation Measurement mission Microwave Imager (GMI) observations is used as a dataset for model development and verification. The proposed DNN model is shown to accurately predict precipitation types for 85% of total precipitation volume. The model reduces precipitation rate bias associated with convective and stratiform precipitation in the GPM operational algorithm by a factor of 2 while preserving the correlation with reference precipitation rates, and is insensitive to surface type variability. Based on comparisons against currently used convective schemes, it is concluded that the neural network approach has the potential to address regime-specific PMW satellite precipitation biases affecting GPM operations.

1. Introduction and motivation

Variability in precipitation typology affects vertical water and energy fluxes through the associated precipitation structure, dynamics, microphysical processes, and latent heat release. The distribution of convective and stratiform precipitation impacts Earth's radiative properties and

atmospheric circulation. While the differences in microphysical processes and dynamics in convective and stratiform systems are well documented in the literature (e.g., Houze 1997), distinguishing between them remains a major challenge for remote sensing. A lack of measurements of updraft speed prevents a direct identification of precipitation types, which in turn hampers the interpretation of remotely sensed storm properties. Inaccurate understanding of hydrometeor

Corresponding author: Veljko Petković, veljko@umd.edu

DOI: 10.1175/JTECH-D-19-0008.1

© 2019 American Meteorological Society. For information regarding reuse of this content and general copyright information, consult the [AMS Copyright Policy \(www.ametsoc.org/PUBSReuseLicenses\)](https://www.ametsoc.org/PUBSReuseLicenses).

distribution and evolution throughout the precipitating column ultimately affects the quality of precipitation rate estimates at the surface from both active and passive remote sensing observations. This challenge is especially pronounced in satellite observations.

Since the first spaceborne passive microwave instruments were launched in early 1970s, satellite precipitation retrievals have exploited the link between upwelling radiation and state of atmospheric column. Leveraging decades of ever-improving algorithms, coverage, and data latency, the Global Precipitation Measurement (GPM) mission (Skofronick-Jackson et al. 2018; Hou et al. 2014) represents the most advanced satellite precipitation project to date. Combining both direct (gauges) and remote (radar/radiometer) measurement techniques, using ground and in-orbit observations complemented by the state-of-the-art atmosphere simulations, the GPM constellation offers full global coverage of rain and snow every 30 min at a resolution of only 0.1° and a latency of only a few hours. Freely available precipitation products are implemented across a spectrum of decision-making scientific tools, ranging from hydrology to world health. To ensure user demands for accuracy are met over broad time/space scales (e.g., nowcasting to climate), GPM precipitation products undergo continuous validation against the latest reference standards before reaching the users. In this rigorous process ground-based measurements (i.e., gauges and ground radars) typically perform well (Kirstetter et al. 2012) but their satellite counterparts face a number of challenges (Tang et al. 2014; Meyers and Ferraro 2016; Ciabatta et al. 2017). While averaged precipitation estimates from satellite precipitation products are generally quite good, their consistency across specific scales, atmospheric conditions and raining regimes is still far from the ideal (Petković and Kummerow 2017; Tan et al. 2017, 2018; Henderson et al. 2018). Currently, GPM passive microwave sensor estimates do not use precipitation type information to constrain the retrievals.

The challenge in obtaining consistent satellite precipitation estimates across varying atmospheric conditions can be attributed to the inability of current passive microwave (PMW) retrievals to properly distinguish between distinct storm profiles and their corresponding surface precipitation rates. Due to the nonlinear response of the atmospheric content (i.e., hydrometeors) to the upwelling microwave radiation, the individual radiometric signatures of surface and atmospheric properties are obscured. Hence the inverse problem of retrieving the atmospheric contribution from the MW radiance is underconstrained by nature. In other words, solving an inverse problem using an incomplete observation

vector results in a deficient estimate of the corresponding state vector.

To demonstrate this effect, instantaneous precipitation estimates from a passive and an active microwave instruments, mounted side-by-side on board the GPM core satellite, are compared for two distinct precipitating regimes—convective and stratiform, as defined by the GPM radar (details in section 2). Using a full year of globally observed (66°S – 66°N) precipitation rates over land, upon removal of the overall difference, GPM PMW satellite retrieval reveals opposite mean deviations (hereafter referred to as biases) relative to the radar-based estimates under the two precipitation regimes. Illustrated in Fig. 1, the comparison of the distributions of active- and passive-estimated precipitation rates, for convective and stratiform cases, suggests a negative 29% bias for convective regime and a positive 26% bias for the stratiform cases. A closer inspection of active- and passive-estimated precipitation distributions confirms that PMW biases exist over the majority of their characteristic precipitation rates. Results over ocean, not shown here, yield the same general conclusions.

A review of the existing literature confirms the impact of precipitation type on PMW retrieval performance seen in Fig. 1 even when ground radars are used as a reference (e.g., Henderson et al. 2017). While both PMW and radar retrievals certainly contribute to the bias dipole, the passive microwave's bias against both spaceborne and gauge-calibrated surface radar observations leads us to believe that the bulk of the bias is coming from the passive microwave retrievals themselves. The cause is typically attributed to upwelling radiation appearing similar for convective and stratiform regimes within the observation frequencies of PMW radiometers, despite their distinct rainfall profiles. With limited ability to recognize and address the exact source of subtle changes in the observed radiances, the retrieval recognizes the average value of the two as the best fit in its minimization function. Consequently, the solution is centered between the two regimes.

To provide a better insight, the distribution of total precipitation estimated by the two GPM sensors is given in Fig. 2 as a function of GPM radar-defined convective fraction. Clearly, the PMW retrieval (light blue) struggles to match the radar's (gray) distribution of global precipitation when sampled by precipitation type. While this result may in fact be the best performance a PMW precipitation retrieval has achieved to date, the comparison raises a simple question: Is there any information the PMW retrieval could use to improve this performance? We hypothesize that accounting for the precipitation type in the retrieval has the potential to generate more

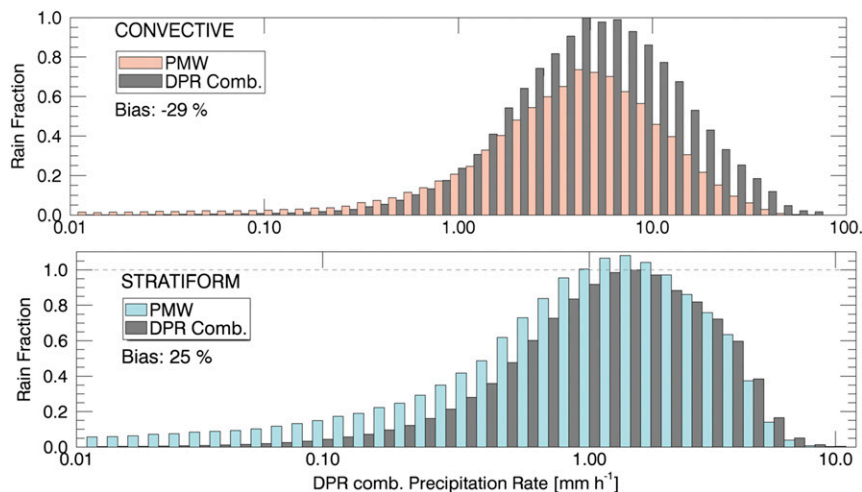


FIG. 1. Comparison of global over land pixel-level distribution of precipitation rate estimates of GPM’s DPR-combined (gray) and GMI (colored bars) products. (top) Convective and (bottom) stratiform systems are delineated using a 50% threshold for DPR convective rain volume within the GMI field of view. Results are showing normalized rain fraction as a function of precipitation rate of one year (September 2014–August 2015) of GPM observations. Note a different *x* axis range on the two plots.

accurate precipitation estimates. Figure 2 shows a precipitation fraction distribution of the PMW retrieval when the current operational algorithm is allowed to use radar-observed convective fraction information (bright blue) as an additional ancillary parameter (see section 4a). As expected, a better match to the reference suggests that the information on convective fraction might be a key to mitigating PMW biases seen in Fig. 1. However, radar observations of precipitation from space are sparse, typically limited to research missions (e.g., TRMM and GPM) and intended to serve as a reference rather than a supplement to PMW observations. It is therefore important to assess if convective/stratiform information can be inferred from the passive microwave information itself. Yet, despite sustained, decades-long effort to identify a robust link between PMW observations and convective fraction, only a few regression methods with modest skill are available. These methods largely utilize the spatial variability of the brightness temperature (*T_b*) of the high-frequency channels (e.g., 30 GHz and above). Thus, the convective fraction of a radiometer field of view (FOV) is typically calculated by employing 37–89-GHz signal ratio (the liquid water emission and ice scattering), spatial variability of 85-GHz *T_b* depression, or the gradients and standard deviation of 85-GHz *T_b* adjacent pixels (Anagnostou and Kummerow 1997; Grecu and Anagnostou 2001; Kummerow et al. 2001; Olson et al. 2001; McCollum and Ferraro 2003; Dinku and Anagnostou 2006; Gopalan et al. 2010). These techniques still find their applications in operational PMW retrievals at NASA and NOAA centers (details

in section 4). More recent studies have investigated the use of lightning information in complementing the PMW brightness temperatures to improve PMW algorithm’s ability to discriminate between convective and stratiform regimes (Wang et al. 2012). While the results indicate a great potential, especially considering the expansion of Geostationary Lightning Mapper

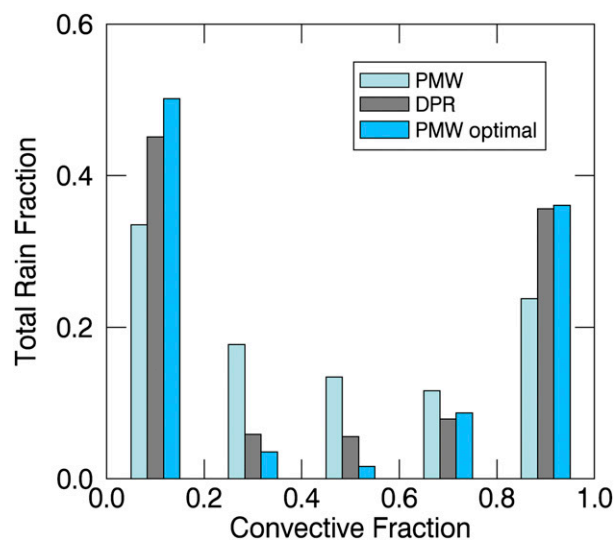


FIG. 2. Distributions of total precipitation fraction as a function of DPR-combined (V5) convective fraction. The *x* axis ranges from zero (fully stratiform) to one (fully convective) in 0.2 increments. Light blue: current operational GPROF (V5) retrieval; gray: DPR-combined (V5); bright blue: GPROF when provided DPR-combined information on convective/stratiform flag.

(GLM) coverage in the near future (Goodman et al. 2013), this information is limited to the lightning-active clouds and era of GLM satellite sensors.

Given the four-decade-long effort in linking PMW observations and storm morphology, little, if any, room has been left for a potentially novel physically based approach to emerge. However, recent advances in deep learning methods with neural networks may offer perhaps not new but for the first time fully applicable models that could better exploit the information content in PMW observations. This study seeks to investigate such a possibility through the use of deep learning for both retrieving precipitation types and improving the performance of PMW precipitation retrievals.

Defined nearly 70 years ago, artificial neural networks (NNs) have been generally labeled as “black box” mathematical methods of limited application and performance. Major obstacles to their successful application resulted from their extensive need for computational power, and lack of large-enough datasets that could provide a robust, noise-resistant relationship between the predictor and predictand. The late 1980s and early 1990s brought advances in affordable computing hardware and availability of large satellite datasets. This initiated NN satellite applications, leading to a number of NN schemes present today, mainly covering image processing, classification, series prediction, and geophysical retrievals in general. A study of Tapiador et al. (2004) offers an extensive overview of efforts made in the field of satellite precipitation retrievals by the early 2000s. Among those, one retrieval has found its use in GPM applications: the Precipitation Estimation from Remote-Sensed Information using Artificial NN (PERSIANN; Sorooshian et al. 2000). This approach uses multisource information from satellite and surface data to establish a relationship between IR observations and surface precipitation. A more recent project within the EUMETSAT H-SAF program resulted in a new rainfall rate retrieval algorithm (Sanò et al. 2018). A demonstration of the potential of the DNN approach in retrieving precipitation rate is offered by Tang et al. (2018). While some of these projects have a valuable role in GPM mission, they do not provide a solution for accurate estimate of precipitation type from PMW observations. Apart from the fact that retrieving the precipitation type was not their primary goal, the lack of prediction skill in convective fraction likely comes from the insufficient depth of these models. With a recent increased reliance on graphical processing units (GPUs) for brute-force computations, NNs can be allowed to search for deeper, multidimensional nonlinear links between predictors (e.g., PMW observations) and predictand

(e.g., precipitation type). As a result, modern DNNs and machine learning (ML) systems allow accurate modeling of complex dynamical systems. This study attempts to demonstrate that this approach can successfully be employed as a novel PMW precipitation type characterization to improve retrieval performance. While the study is not designed to optimize the DNN model, it is nonetheless hypothesized here that a modern DNN is capable of constructing an accurate precipitation regime prediction model if provided with a high-quality training dataset consisting of brightness temperatures and the relevant convective/stratiform classification. The GPM instrument suite is seen as an ideal data source for this demanding task. Being directly affected by the challenges in linking storms structures and their PMW signatures, the problem is approached from a surface precipitation rate bias perspective (as depicted in Fig. 1).

The paper is organized as follows: details on the instruments and data collection, in addition to detailed description of the DNN model are given in section 2. Results on the accuracy of DNN model in predicting convective/stratiform separation are in section 3, followed by applications and conclusions in the last two sections.

2. Data collection and methods

Deep learning neural networks are data-driven models. The performance of DNNs in terms of accuracy and their ability to generalize to new inputs depends on the representativeness, quantity and quality of the training dataset. To establish a baseline model and evaluate the performance of the approach we propose a relatively simple scheme and a widely available satellite dataset. Detailed descriptions of the datasets and DNN model are given below.

a. Instruments and data

This study employs 2 years, from September 2014 to August 2015 and from January to December 2017, of the GPM core satellite global observations (66°S–66°N) to explore accuracy and potential of neural network approach in retrieving precipitation type from PMW measurements. Combined observations from GPM’s Microwave Imager (GMI) and Dual-Frequency Precipitation Radar (DPR) are used to relate brightness temperatures to the convective/stratiform information.

1) GPM MICROWAVE IMAGER

Since the launch of the GPM core platform in 2014, the GMI instrument (Draper et al. 2015) serves as a

calibration standard for PMW conical-scanning radiometers in the GPM constellation. The GMI channel-dependent FOV decreases from approximately 25 to 6 km as the frequency increases from 10 to 183 GHz, leaving a gap in coverage at high-frequency channels between consecutive, 221-pixel-wide, 13-km apart, scan lines. Brightness temperatures observed at 13 microwave channels (10.65H/V, 18.7H/V, 23.8V, 36.5H/V, 89.0H/V, 166V/H, and $183.3 \pm 3/7V$ GHz) are stored in GPM level-1 standard product (GPM_BASEGPMGMI_XCAL-V05; [GPM Science Team 2016](#)) and freely available through NASA's data exchange portals (e.g., <https://storm.pps.eosdis.nasa.gov>).

2) GMI PRECIPITATION RATE

The GPM Goddard profiling (GPROF) algorithm ([Kummerow et al. 2015](#)), described in [section 4](#) and slightly modified for purposes of this study, uses the GMI Tbs to provide precipitation rate estimates for most of the GPM PMW observations. The product used in this study is GMI GPROF standard output for level-2 data (GPM_2AGPROFGPMGMI; [Iguchi and Meneghini 2016](#); [NASA 2018](#)), freely available through the same portal as the GMI Tbs.

3) GPM COMBINED PRODUCT PRECIPITATION RATE AND TYPE

Designed to extract the best from both the passive and active microwave instruments observations, the GPM combined algorithm (hereafter DPR-combined; [Greco et al. 2016](#)) produces the best high-resolution precipitation estimates from a spaceborne platform. As such, the DPR-combined product (GPM_2BCMB; [Olson 2017](#)) is used in this study to provide a reference regarding instantaneous storm structure, namely the surface precipitation rate and convective/stratiform class. While the precipitation rate retrieval ([Olson and Masunaga 2016](#)) is developed specifically to use information from both microwave sensors (active and passive), the precipitation type in DPR-combined product relies strictly on GPM's DPR. The technical description of the DPR instrument and full algorithm description can be found in [Iguchi et al. \(2015\)](#), while a brief overview of its precipitation type classification criteria is provided here for completeness purposes.

Based on [Iguchi et al. \(2009\)](#), the DPR algorithm classifies all precipitating FOVs into three major categories—convective, stratiform, and other—using a detection of a bright band (BB) as a criterion in so-called vertical and horizontal methods ([Awaka et al. 2016](#)). In this process, if a BB is detected, the pixel is considered to be stratiform, unless the attenuation-corrected reflectivity below the

BB exceeds a threshold of 39 dBZ, in which case pixel is flagged as convective. If no BB is detected, the pixel is classified as convective if corrected reflectivity anywhere in the profile exceeds a 39-dBZ threshold. In addition, if the maximum reflectivity for a given pixel stands out against the background of the surrounding pixels, or exceeds a predetermined threshold (i.e., 40 dBZ), the pixel and its first neighbors are regarded as convective. In any other scenario the pixel is classified as other (this class typically accounts for less than 10% of all precipitating pixels and is ignored in this study).

Using both DPR-combined precipitation rate and type, this study assigns a precipitation type to a GMI FOV through the volumetric convective fraction (i.e., a fraction of convective relative to the total precipitation rate within a GMI FOV). When more than 50% of the FOV's total precipitation volume is convective the FOV is labeled as convective; otherwise the FOV is labeled as stratiform. No attempt toward improvement of the DPR classification scheme is made, albeit the known challenges ([Iguchi et al. 2015](#); [Kirstetter et al. 2014](#)).

4) GPM GROUND VALIDATION MULTI-RADAR/MULTI-SENSOR PRECIPITATION RATE AND TYPE

The GPM Ground Validation Multi-Radar/Multi-Sensor (GV-MRMS) dataset is used in this study as an independent reference for qualitative assessment of the satellite DPR-combined precipitation type product (see [section 4b](#)). MRMS quantitative precipitation estimates are based on ground polarimetric WSR-88D radar and automated rain gauge networks ([Zhang et al. 2011, 2016](#)) offering products at 0.01° spatial and 2-min temporal resolution over the conterminous United States and Canada. Extensive gauge correction and quantity filters are applied on MRMS data to generate GV-MRMS products specifically adapted to satellite purposes and needs for the highest data quality, as described in [Kirstetter et al. \(2012, 2014\)](#). To provide fair comparisons to DPR-combined product, GV-MRMS precipitation type flags are grouped into two categories using the MRMS-provided flags ([Zhang et al. 2016](#)): convective (including hail, convective and tropical convective) and stratiform (including tropical stratiform and stratiform), and the same volume threshold (50%) as in the DPR-combined case.

b. Machine learning: Deep neural network, training, and validation

A common approach to a classification problem would be to engineer input features for a classification model (e.g., random forest, support vector machines, k -nearest neighbor). Such an approach requires a high level of expert knowledge to hand-craft the features

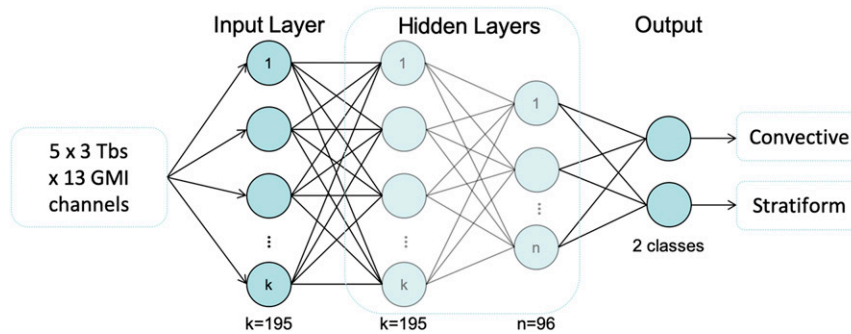


FIG. 3. Fully connected neural network. Thirteen channels of 5×3 pixels Tb field, centered onto the retrieving GMI FOV serve as an input to two hidden layers of 195 and 96 neurons, respectively. Two classes, convective and stratiform, are used as the output in this classification scheme.

(e.g., spatial properties of the input fields; cross-channel correlations; derived class metrics) while bounding the space the classification model considers in the search for a solution. To minimize constraints and biases posed by hand-crafted features and subjective choices we opted to employ neural networks, which in contrast can learn representations of data and use them for classification. Studies by Meyer et al. (2016) and Tang et al. (2018) provide an overview of four neural network employed schemes used in recent years for satellite rainfall estimates. In this study, the problem of classifying precipitating satellite FOVs is posed as a supervised learning problem given the availability of the data and the ability to prepare and label a large dataset for the training of the classification algorithm. Specifically, deep learning methods are used to establish a link between the raw GMI channels and two precipitation classes (i.e., convective and stratiform precipitation type) using the DPR's convective/stratiform flag, given by GPM_2ADPR product (Iguchi and Meneghini 2017), as a relative reference. In this application of deep learning, a feedforward neural network is used with fully connected architecture (LeCun et al. 2015) relying on TensorFlow API, an open source software library for machine learning intelligence (Abadi et al. 2015).

Using one year of observations (September 2014–August 2015) the described DNN model is trained to predict a precipitation type class. Randomly choosing 24-h intervals of labeled predictors, this 12-month period is split into training, validation, and test subsets using a 70/20/10 ratio. The input data are chosen to be 3×5 FOV fields of GMI brightness temperatures at all 13 channels, centered on the retrieving FOV. These approximate $20 \text{ km} \times 20 \text{ km}$ patches of Tbs provide temperature gradient information that is known to be well correlated with precipitation type change, while 13 GMI frequencies capture hydrometeor and surface

type variability. The resulting 195 predictors are trained against FOV class determined by the ratio of total to convective DPR-combined rain rate within the GMI FOV. Training is performed separately for land and ocean surface.

THE ARCHITECTURE

Figure 3 summarizes the architecture of the neural network: 195 input features, two fully connected hidden layers, where the first hidden layer has 195 neurons, the second hidden layer has 96 neurons, and the last layer (i.e., the output) has 2 neurons as the number of classes. A hyperbolic tangent (\tanh) function is used as the activation function for the hidden layers, while a softmax activation function is used for the output layer. Additionally, batch norm is applied to the input layer in order to normalize batch statistics (Ioffe and Szegedy 2015) and speed up the training. Cross-entropy loss is used as loss function and coupled with the Adam optimization method (Kingma and Ba 2014).

Google's Cloud Machine Learning Engine (<https://cloud.google.com/ml-engine/>), ml-engine, is utilized for the training of the model with both training and validation data accessible by the framework through the Google Cloud storage service. The ml-engine hardware configuration was set to a single worker GPU and a single parameter server, both of Google's internal "standard_type." Hyperparameter constants include learning rate λ and a batch size. A search for learning rate spans $\lambda \in [5 \times 10^{-5}, 3 \times 10^{-3}]$ and the batch size $\in [256, 1024]$. The ml-engine built-in hyperparameter search method (Golovin et al. 2017) and the accuracy on the validation data to determine these constants are utilized.

The highest accuracy in training on validation data was found for $\lambda = 9.2 \times 10^{-5}$ and batch size of 432. The overfitting is monitored during training via validation

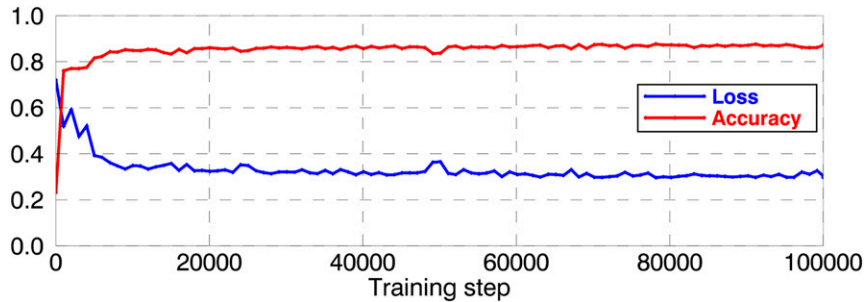


FIG. 4. Accuracy (red) and loss (blue) on the validation dataset for over land training.

dataset. Figure 4 shows validation dataset accuracy and loss, confirming the model does not overfit in training. The next subsection reports the model's performance on the test dataset.

3. Results

Using a predicted class probability of 50% as a threshold and testing the model on an independent 12-month period (January–December 2017) dataset, the model achieved the 87% of overall accuracy in precipitation type classification (by count) when DPR retrieval is used as a reference. Summarized results, given in Table 1, indicate an imbalance between the two classes with accuracy of 97% for stratiform and approximately 40% for convective class. This result is shown to be insensitive when changes are made to convective-to-stratiform count ratios in the training dataset. When assessed using the total precipitation amount by each of the classes, the results suggest the correctly classified convective scenes account for almost 70% of total convective precipitation volume. This implies that most of the classification errors occur for relatively light precipitation classified as convective. The method correctly classifies 98% of stratiform precipitation volume, with the relatively high Heidke skill score (HSS; Wilks 2011) of 0.47 and the two subgroups of accurately assigned classes accounting for nearly 84% of total precipitation.

To provide more insight to the DNN model's performance, Fig. 5 shows the probability of correctly predicted class as a function of convective fraction (left) and precipitation rate (right). With a mean probability (red diamonds) above 75% and with 75% of FOVs (the bottom of blue box) being above the 65% probability value, the model shows a robust performance in respect with both precipitation regime and intensity.

The stability and high percentage of accurately classified precipitation volumes are strong indicators of model's potential to mitigate PMW precipitation type

biases presented in Fig. 1. The following section evaluates the extent of this potential.

4. Applications

This section aims at testing the potential benefit of the above classification scheme on the passive microwave retrieval algorithm used in GPM.

a. PMW rainfall retrieval

Developed at NASA's Goddard Space Flight Center in the mid-1990s (Kummerow and Giglio 1994), the GPROF algorithm is used operationally for PMW precipitation retrieval at NASA and NOAA. NASA's Precipitation Processing System (PPS) runs the most recent GPROF Version 5 (V05) algorithm to process PMW observations from a constellation of cross-track (e.g., Kidd et al. 2016) and conical scanning sensors, including GMI, SSMI/S (Kunkee et al. 2008), AMSR2 (Shimoda 2005), ATMS (Muth et al. 2005), MHS (Edwards and Pawlak 2000), and others (see the appendix for a full list of acronyms and abbreviations). NOAA's operations rely on an older GPROF version (2010v2) to retrieve AMSR2 precipitation rates (Gopalan et al. 2010; Meyers et al. 2015). Only the most recent version of the algorithm is detailed below, while the evolution of the retrieval and differences

TABLE 1. Accuracy of DNN model in predicting convective/stratiform class over land using GMI observations from January to December 2017. Numbers within each category provide total counts of GMI FOVs (percentages given in parentheses).

	Observed convective	Observed stratiform	Total
Retrieved convective	29 152 (39%)	44 705 (61%)	73 857 (20%)
Retrieved stratiform	5104 (2%)	299 859 (98%)	304 963 (80%)
Total	34 256 (9%)	344 564 (91%)	378 820

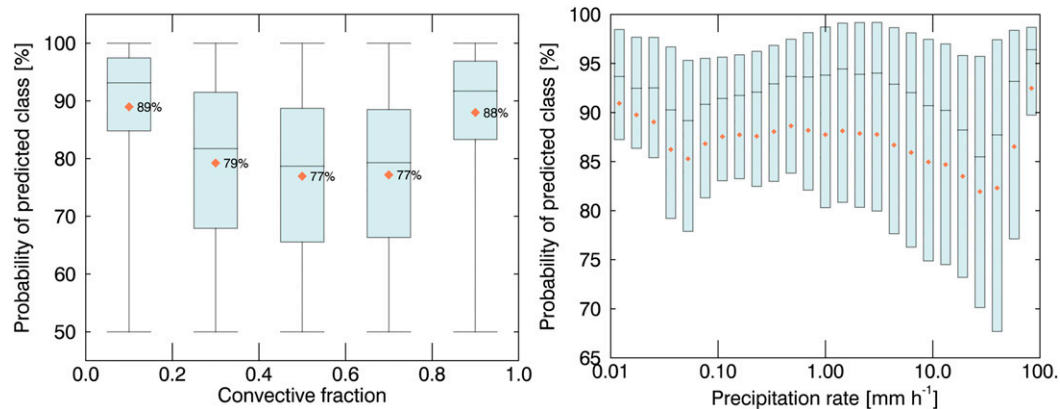


FIG. 5. Probability of predicted class as a function of FOV's (left) convective fraction (by volume) and (right) precipitation rate for January–December 2017 over land globally. Box and whiskers denote quintiles of FOV within a class (i.e., 0%, 25%, 50%, 75%, 100% marks); the mean value for each bin is marked by red diamond. Convective fraction ranges from zero (FOV fully stratiform) to one (FOV fully convective).

between the two versions are documented in work of Kummerow et al. (2015).

GPROF utilizes a Bayesian approach that employs a priori information on the relationship between hydrometeor profiles and corresponding radiances. Using the DPR-combined algorithm as a primary source of precipitation profiles, coupled with radiative transfer models, GPROF computes T_b s for any sensor that forms part of the GPM constellation (Kummerow et al. 2011). The algorithm first groups the entire a priori database by using ancillary information (TPW, surface type, and 2-m

temperature) to subset the database by the observed large-scale conditions. As part of this process, surface types are defined using SSM/I observed emissivity climatology (Aires et al. 2011) updated daily by NOAA's AutoSnow product (Romanov et al. 2000), while TPW and 2-m temperature come from reanalysis datasets such as ECMWF (Dee et al. 2011) and JMA's global analysis (GANAL; JMA 2000). The database elements are averaged through the Bayesian scheme where DPR-combined precipitation rates are assigned a weight proportional to their respective probability given by Eq. (1):

$$r_r = \frac{\sum_i r_i w_i}{\sum_i w_i}, \quad \text{where} \quad w_i = \exp\{-0.5[\mathbf{T}_b - \mathbf{T}_{b-f}(r_i)]^T \mathbf{S}^{-1} [\mathbf{T}_b - \mathbf{T}_{b-f}(r_i)]\}, \quad (1)$$

here, i is an element of the a priori database, \mathbf{S} is the \mathbf{T}_b error covariance (to account for both forward model and instrument errors), \mathbf{T}_b is the FOV observed brightness temperature, and $\mathbf{T}_{b-f}(r_i)$ is r_i -associated brightness temperature while r_r is the retrieved precipitation rate.

This approach is relatively easy to apply to any PMW sensor and ensures preservation of the global precipitation rate distribution given by the a priori reference (e.g., DPR-combined product). However, when a sensor is incapable of distinguishing between radiometrically similar scenes of various precipitation rates, the Bayesian technique gives equal weight to database elements of mismatching hydrometeor profiles. Consequently, the error introduced to the instantaneous precipitation rates becomes a function of precipitation type (as seen in Fig. 1). Thus, if the averaging is limited only to a priori database elements of similar precipitation

types, it should be possible to decrease, if not fully eliminate, the biases highlighted in Fig. 1. Before testing for potential of the DNN model to contribute toward this goal, a qualitative evaluation of the model's ability to predict the convective/stratiform flag is presented.

b. Retrieving convective fraction from PMW observations

Using an example of the squall line observed over the Midwest U.S. on 13 July 2015 (Fig. 6), a performance of the DNN model is compared to that of ground and satellite retrievals. Figure 6 offers a side-by-side comparison of the system's precipitation type partitioning observed by GPM core satellite and ground radar network at 0720 UTC. The same 50% convective volume threshold is applied to delineate two precipitation classes [note: in GPROF case, Eq. (1) defines both total and

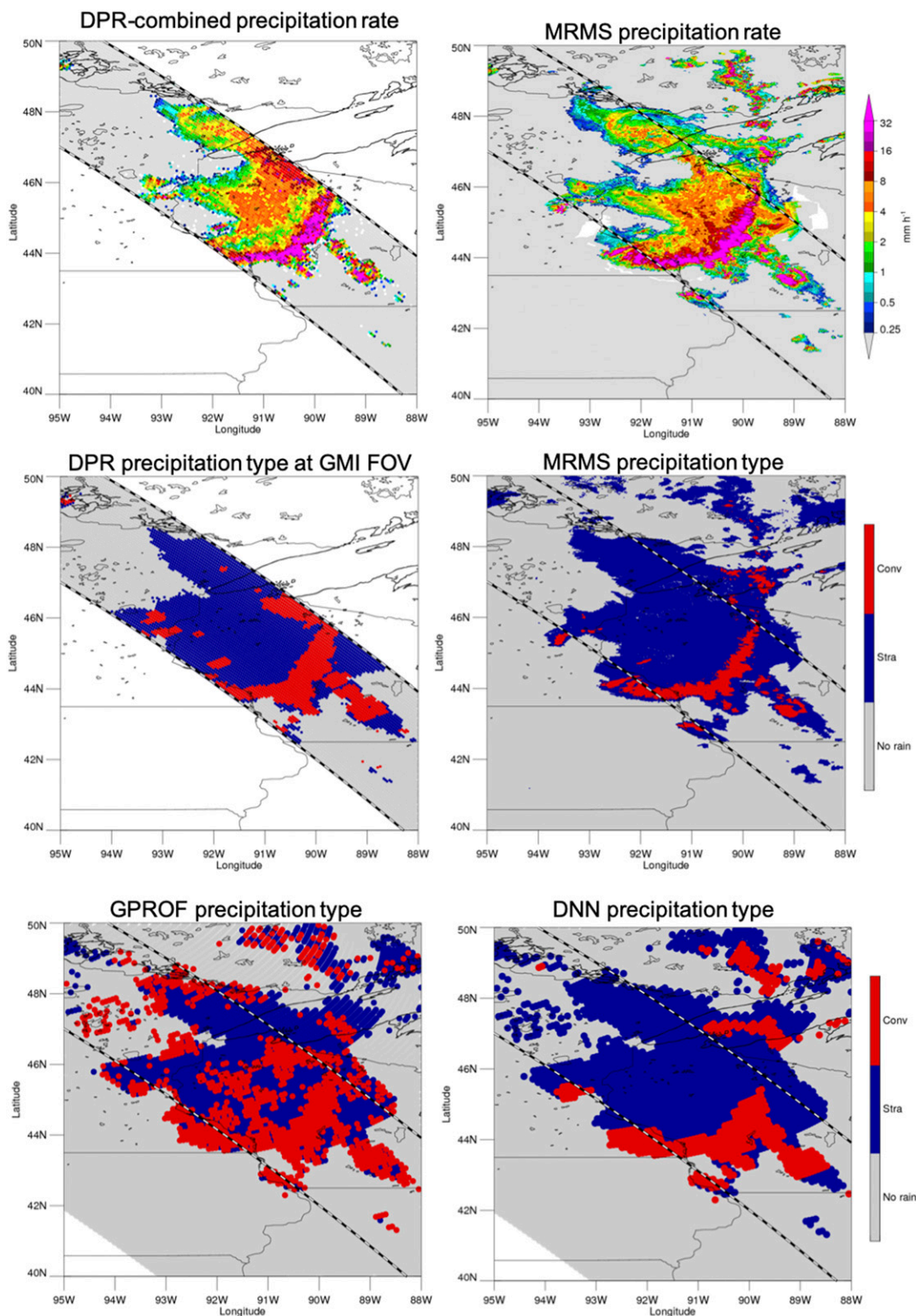


FIG. 6. A squall line over the Midwest U.S. on 13 Jul 2015. Precipitation rate by (top left) DPR-combined and (top right) Multi Radar Multi Sensor network. Precipitation type by (middle left) DPR-combined and (middle right) Multi Radar Multi Sensor network. Precipitation type by (bottom left) GPROF algorithm and (bottom right) DNN. Black/white lines denote the edges of the DPR swath for the GPM core-satellite overpass (orbit number 7789) at 0720 UTC.

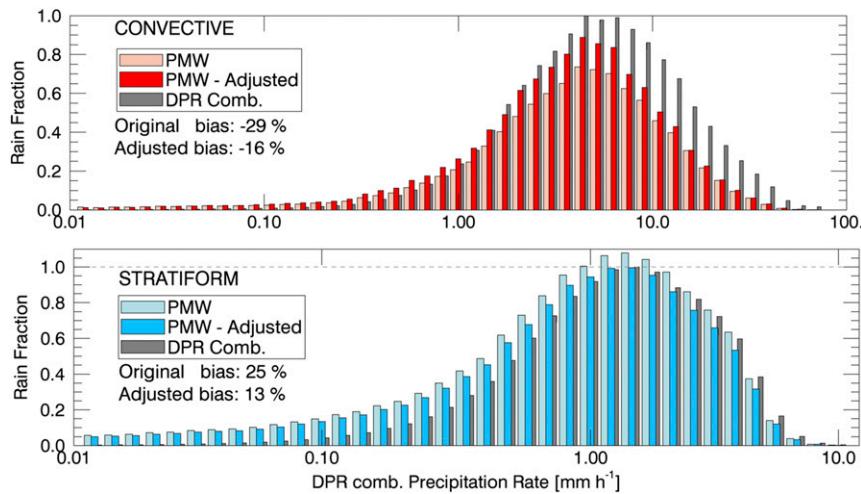


FIG. 7. Comparison of precipitation distributions of DPR-combined (gray; reference), GPROF V05 (light blue), and GPROF-adjusted (bright blue) retrievals for (top) convective and (bottom) stratiform scenes. Note: the range on the x axes differs in the two plots.

convective precipitation, using total and convective DPR rate, respectively]. Qualitative analysis of precipitation rate and type retrieved by GV-MRMS, DPR-combined, GPROF, and DNN suggest the following: 1) DPR-combined and GV-MRMS precipitation rate and type show good overall agreement but some disparity is present; 2) while GPROF algorithm captures the general structure of the squall line it largely overestimates the convective portion of the system; 3) DNN model outperforms the PMW retrieval showing only minor inconsistencies with both ground and satellite references.

Upon closer inspection of Fig. 6, it can be noted that the DNN model does not assign a convective flag to the area on the left side of the convective bow (46°N, 90.5°W)—the only area over which ground and satellite radars show significant disagreement. It is likely that this region is erroneously labeled as convective by the DPR, and does not have the typical spectral signal of other DPR-defined convective regions. While investigating this behavior (of the DNN perhaps outperforming the training data in this particular case) is beyond the scope of this study, the more robust result is that GPROF without DNN largely overestimates the convective portion of the storm, which directly links to Fig. 1 and the precipitation type bias. Given the nature of convection, one can typically expect higher precipitation rates over convective pixels relative to the stratiform ones. Therefore, the erroneous assignment of convective type over stratiform region by the GPROF retrieval (Fig. 6 bottom left) should, in general, lead to an overestimation of stratiform scenes. On the other hand, as long as the Bayesian averaging allows stratiform database elements to be included in the retrieval of

convective pixels, one should expect an underestimation of precipitation rates. The current GPROF algorithm does not have an effective mechanism to separate the two, resulting in the precipitation type bias dipole, as confirmed by Fig. 1. To test if the performance of the DNN model seen in Fig. 6 can mitigate these biases, the model is implemented directly to the GPROF retrieval and tested on a longer time period of observations.

c. Mitigating PMW precipitation bias via retrieved convective fraction

To test whether the DNN model's precipitation type retrieval can offer complementary information to the GPROF algorithm, the model is implemented directly into the retrieval's scheme. In this two-step process, using Tb vectors as an input, the DNN model first assigns a convective/stratiform flag to each element of GPROF's a priori database. Then, in the retrieving process, the same DNN model employs observed brightness temperatures to assess each FOV precipitation type. Classified either as convective or stratiform, the FOVs are assigned Bayesian average precipitation rates through the Eq. (1) but now considering only database elements of the same precipitation type. In other words, DNN output is used to additionally constrain the a priori database and eliminate nonrelevant inputs in Eq. (1). The results are summarized in Figs. 7 and 8 and Table 2.

Figure 7 presents the same analysis shown in Fig. 1, where global over land GMI observations for the 12-month period are separated into convective and stratiform types, but in addition to the DPR-combined (gray; reference) and GPROF-GMI algorithm (light colors), it displays the DNN-adjusted result (bright colors).

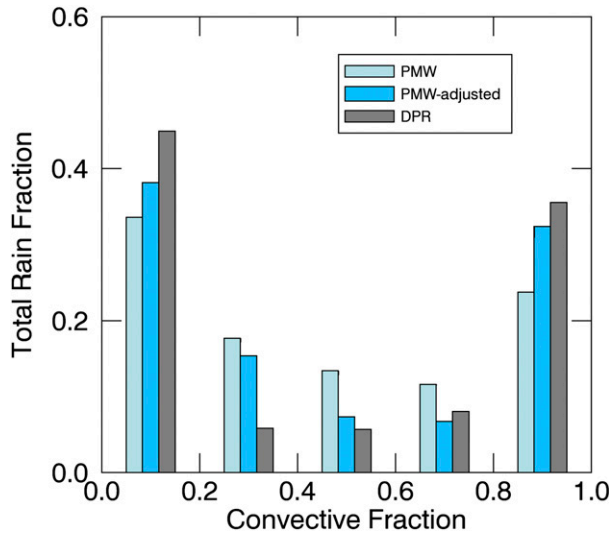


FIG. 8. Total precipitation fraction for year 2017 as a function of convective fraction as retrieved by DPR-combined (reference; gray), original (light blue), and adjusted (bright blue) PMW retrieval.

Clearly, the adjusted product is a better match to the reference. The majority of the precipitation rate spectrum has the rain fraction of the adjusted product much closer to that of DPR-combined. Exceptions are convective rates below 1 mm h^{-1} and stratiform rates above 5 mm h^{-1} . However, these account for less than a tenth of the overall bias and in fact do not reflect DNN-induced errors. Their origin lays in the Bayesian scheme itself, where the solution of Eq. (1) always leans toward the mean value of averaging elements. Since these precipitation rates are common for both precipitation types, the link between the precipitation type and T_b is rather weak and too ambiguous for DNN to extract from T_b vector alone. Consequently, the bias centers around the peak of precipitation fraction.

Following the approach in section 1, the DNN effect on the PMW retrieval is tested through comparison of total precipitation fraction distributions. The analysis presented in Fig. 2 are repeated and shown in Fig. 8, only this time the optimal PMW retrieval is replaced by

that of the DNN-adjusted retrieval. Showing consistent improvement and reducing the total precipitation misclassification, the comparison clearly confirms the potential DNN-model has in reducing precipitation type bias of PMW retrievals.

To test the robustness of this result, the PMW retrieval is extended to a full domain of the GPM core satellite (66°S – 66°N). Table 2 summarizes the effect of the DNN model implementation on the bias and correlation coefficient for the two precipitation types over both land and ocean for the aforementioned 12-month period. On average, the precipitation rate bias is reduced by a factor of 2 (i.e., 45%–50%) while the correlation coefficients remain stable.

Interestingly, when combined, Figs. 7 and 8 suggest the DNN model may in fact be close to the optimal. The model’s impact to GPROF performance is poor only for precipitation rates common to both convective and stratiform regimes, where the link between DPR precipitation type and T_b s is rather weak and ambiguous. While this requires further investigation, a comparison of the accuracy of the retrieved precipitation type by the DNN model and current state-of-the-art PMW algorithm is considered next. Table 3 summarizes assessments of convective/stratiform separation given by NOAA’s (GPROF-2010) and NASA’s (GPROF V05) operational PMW precipitation retrievals, using once again the DPR-combined product as a reference. To maximize each scheme’s performance, all three methods consider only the domain they have been trained for and use the same 0.5 threshold of convective to total precipitation ratio as a delineator between convective and stratiform FOVs. Following Gopalan et al. (2010), GPROF-2010 is assessed over tropical land (20°S – 20°N), while the other two consider land coverage of the GPM core satellite. Percentage of both volume and counts relative to the number of predicted elements per category is given in addition to the HSS using the same approach as in section 3. The results suggest that, when the DPR is used as a reference, the DNN model outperforms the other two in all aspects except in the

TABLE 2. Bias and correlation coefficients of the original (V05) and DNN-adjusted GPROF precipitation rates retrieved globally (66°S – 66°N) during 2017.

	Bias (%)		Correlation coefficient		
	Convective	Stratiform	Convective	Stratiform	All
	Land				
GPROF V5	–29	25	0.64	0.67	0.59
GPROF w/DNN	–16	14	0.65	0.69	0.61
	Ocean				
GPROF V5	–9.0	7.2	0.86	0.92	0.89
GPROF w/DNN	–4.5	3.6	0.87	0.93	0.90

TABLE 3. Accuracy of predicting precipitation type from PMW observations. Comparisons for correctly predicted FOV types by count and precipitation volume for year 2017, globally, over land. The bold font highlights the winning run in each of the categories.

	Total precipitation volume (%)			By count (%)			HSS
	Convective	Stratiform	Total Predicted	Convective	Stratiform	Overall	
GPROF V05	62	84	74	50	83	76	0.30
GPROF 2010	55	79	63	14	56	36	0.44
DNN model	67	98	84	39	98	87	0.47

accuracy of the convective class. However, given the HSSs and percent of total precipitation volume under the convective class, the DNN model has the best potential for addressing precipitation-type related biases of the PMW retrievals.

5. Summary and conclusions

The ability of deep learning approaches in retrieving precipitation type from passive microwave observations is tested using GPM mission radiometer (GMI) and radar (DPR) observations. A fully connected DNN model suggests significant improvement in detection skill of precipitation type over the existing operational PMW schemes (i.e., GPROF) when trained on collocated DPR-combined precipitation types and GMI's 13-channel Tb vectors. Tasked to reproduce DPR-based classification of precipitating FOVs (into convective and stratiform scenes), the model correctly assigns a class to 84% of total precipitation volume, with overall accuracy on the scenes' type of 87%. This is achieved with the median probability of class prediction value exceeding 75% mark at all precipitation rates for all convective fractions. Compared to some state-of-the-art satellite passive microwave retrievals, this result shows a 10%–50% improvement in both accuracy and precipitation volume within each of the two categories. The model reduces precipitation rate bias associated with convective and stratiform precipitation in the GPM operational PMW algorithm by a factor of 2 while preserving the correlation with reference precipitation rates, and is insensitive to surface type variability.

The objective of this study was to simply demonstrate the capability of DNN models, rather than optimize a specific model for applications to the GPM radiometer algorithm. The above results allow us to conclude that the deep learning neural network approach for detection of convective precipitation class from satellite passive microwave measurements has an outstanding application potential. Further improvements could be sought through more sophisticated neural network models, such as convolutional approach that could potentially allow for better extraction of spatial information content from the Tbs fields. Adding input features, such as large-scale

environment (e.g., [Petković and Kummerow 2018](#)) and precipitating system features (e.g., [Liu et al. 2008](#)) would likely further strengthen representation of the complex link between DPR precipitation type and PMW Tbs relying on information content beyond the observed FOV.

Besides considering more and better predictors to detect convection, another improvement would address current assumptions in the DNN scheme and its application in the GPROF Bayesian framework: accounting for inherent uncertainties in the DPR precipitation classification. Currently, a convective precipitation flag is assigned to any GMI FOV when more than 50% of the FOV's DPR total precipitation is flagged as convective. The explicit consideration of uncertainties and mixtures of convective and stratiform precipitation within each FOV would be more consistent with the primary precipitation type information and the Bayesian formalism. It would seamlessly address the challenge of ambiguous link between the precipitation types and Tb and remove potential biases arising from a binary classification. Ultimately, these contributions will pave the way toward more accurate precipitation estimation at local to regional scales by mitigating the PMW precipitation retrieval error dependence to precipitation types. These benefits are expected to propagate to larger scales, for example, over ENSO cycles. It will enable more reliable studies of the climatology of global convection and its evolving impact on Earth's water and energy cycles under a changing climate.

Acknowledgments. Authors would like to acknowledge Dr. Wesley Berg (Colorado State University, Fort Collins, CO) for the valuable feedback and help with data analyses. This study was supported by the following grants: NNX16AQ66G, NA19NES4320002, 80NSSC19K0681.

APPENDIX

List of Acronyms

AMSR2	Advanced Microwave Scanning Radiometer 2
ATMS	Advanced Technology Microwave Sounder
API	Application programming interface

BB	Bright band
DNN	Deep neural network
DPR	Dual-frequency precipitation radar
ECMWF	European Centre for Medium-Range Weather Forecasts
FOV	Field of view
GANAL	Global analysis
GLM	Geostationary Lightning Mapper
GMI	GPM Microwave Imager
GPM	Global Precipitation Measurement
GPROF	Goddard profiling algorithm
GV-MRMS	Ground Validation–Multi Radar/Multi Sensor
HSS	Heidke skill score
IR	Infrared
JMA	Japan Meteorological Agency
MHS	Microwave Humidity Sounder
ML	Machine learning
NASA	National Aeronautics and Space Administration
NN	Neural network
NOAA	National Oceanic and Atmospheric Administration
PERSIANN	Precipitation Estimation from Remotely Sensed Information using Artificial Neural Networks
PMW	Passive microwave
SSM/I/S	Special Sensor Microwave Imager/Sounder
Tb	Brightness temperature
TMPA	TRMM Multisatellite Precipitation Analysis
TPW	Total precipitable water

REFERENCES

- Abadi, M., and Coauthors, 2015: Tensorflow: Large-scale machine learning on heterogeneous systems. White paper, 19 pp., <http://download.tensorflow.org/paper/whitepaper2015.pdf>.
- Aires, F., C. Prigent, F. Bernardo, C. Jimenez, R. Saunders, and P. Brunel, 2011: A Tool to Estimate Land–Surface Emissivities at Microwave frequencies (TELSEM) for use in numerical weather prediction. *Quart. J. Roy. Meteor. Soc.*, **137**, 690–699, <https://doi.org/10.1002/qj.803>.
- Anagnostou, E. N., and C. Kummerow, 1997: Stratiform and convective classification of rainfall using SSM/I 85-GHz brightness temperature observations. *J. Atmos. Oceanic Technol.*, **14**, 570–575, [https://doi.org/10.1175/1520-0426\(1997\)014<0570:SACCOR>2.0.CO;2](https://doi.org/10.1175/1520-0426(1997)014<0570:SACCOR>2.0.CO;2).
- Awaka, J., M. Le, V. Chandrasekar, N. Yoshida, T. Higashiawatoko, T. Kubota, and T. Iguchi, 2016: Rain type classification algorithm module for GPM dual-frequency precipitation radar. *J. Atmos. Oceanic Technol.*, **33**, 1887–1898, <https://doi.org/10.1175/JTECH-D-16-0016.1>.
- Ciabatta, L., A. C. Marra, G. Panegrossi, D. Casella, P. Sanò, S. Dietrich, C. Massari, and L. Brocca, 2017: Daily precipitation estimation through different microwave sensors: Verification study over Italy. *J. Hydrol.*, **545**, 436–450, <https://doi.org/10.1016/j.jhydrol.2016.12.057>.
- Dee, D. P., and Coauthors, 2011: The ERA-Interim reanalysis: Configuration and performance of the data assimilation system. *Quart. J. Roy. Meteor. Soc.*, **137**, 553–597, <https://doi.org/10.1002/qj.828>.
- Dinku, T., and E. N. Anagnostou, 2006: TRMM calibration of SSM/I algorithm for overland rainfall estimation. *J. Appl. Meteor.*, **45**, 875–886, <https://doi.org/10.1175/JAM2379.1>.
- Draper, D., D. Newell, F. Wentz, S. Krimchansky, and G. Skofronick-Jackson, 2015: The Global Precipitation Measurement (GPM) Microwave Imager (GMI): Instrument overview and early on-orbit performance. *IEEE J. Sel. Top. Appl. Earth Obs. Remote Sens.*, **8**, 3452–3462, <https://doi.org/10.1109/JSTARS.2015.2403303>.
- Edwards, P. G., and D. Pawlak, 2000: MetOp: The space segment for EUMETSAT's polar system. *ESA Bull.*, **102**, 6–18.
- Golovin, D., B. Solnik, S. Moitra, G. Kochanski, J. Karro, and D. Sculley, 2017: Google vizier: A service for black-box optimization. *Proc. 23rd ACM SIGKDD Int. Conf. on Knowledge Discovery and Data Mining*, Halifax, Nova Scotia, Canada, ACM, 1487–1495, <https://doi.org/10.1145/3097983.3098043>.
- Goodman, S. J., and Coauthors, 2013: The GOES-R Geostationary Lightning Mapper (GLM). *Atmos. Res.*, **125–126**, 34–49, <https://doi.org/10.1016/j.atmosres.2013.01.006>.
- Gopalan, K., N.-Y. Wang, R. Ferraro, and C. Liu, 2010: Status of the TRMM 2A12 land precipitation algorithm. *J. Atmos. Oceanic Technol.*, **27**, 1343–1354, <https://doi.org/10.1175/2010JTECHA1454.1>.
- GPM Science Team, 2016: GPM GMI XCAL Common Calibrated Brightness Temperatures L1BASE 1.5 hours 13 km V05. NASA Goddard Earth Science Data and Information Services Center, accessed 2018, https://disc.gsfc.nasa.gov/datacollection/GPM_BASEGPMGMI_XCAL_05.html.
- Greco, M., and E. Anagnostou, 2001: Overland precipitation estimation from TRMM passive microwave observations. *J. Appl. Meteor.*, **40**, 1367–1380, [https://doi.org/10.1175/1520-0450\(2001\)040<1367:OPEFTP>2.0.CO;2](https://doi.org/10.1175/1520-0450(2001)040<1367:OPEFTP>2.0.CO;2).
- , W. S. Olson, S. J. Munchak, S. Ringerud, L. Liao, Z. Haddad, B. L. Kelley, and S. F. McLaughlin, 2016: The GPM Combined Algorithm. *J. Atmos. Oceanic Technol.*, **33**, 2225–2245, <https://doi.org/10.1175/JTECH-D-16-0019.1>.
- Henderson, D. S., C. D. Kummerow, D. A. Marks, and W. Berg, 2017: A regime-based evaluation of TRMM oceanic precipitation biases. *J. Atmos. Oceanic Technol.*, **34**, 2613–2635, <https://doi.org/10.1175/JTECH-D-16-0244.1>.
- , —, and W. Berg, 2018: ENSO influence on TRMM tropical oceanic precipitation characteristics and rain rates. *J. Climate*, **31**, 3979–3998, <https://doi.org/10.1175/JCLI-D-17-0276.1>.
- Hou, A. Y., and Coauthors, 2014: The Global Precipitation Measurement mission. *Bull. Amer. Meteor. Soc.*, **95**, 701–722, <https://doi.org/10.1175/BAMS-D-13-00164.1>.
- Houze, R. A., Jr., 1997: Stratiform precipitation in regions of convection: A meteorological paradox? *Bull. Amer. Meteor. Soc.*, **78**, 2179–2196, [https://doi.org/10.1175/1520-0477\(1997\)078<2179:SPIROC>2.0.CO;2](https://doi.org/10.1175/1520-0477(1997)078<2179:SPIROC>2.0.CO;2).
- Iguchi, T., and R. Meneghini, 2016: GPM GMI (GPROF) Radiometer Precipitation Profiling L2A 1.5 hours 13 km V05., Goddard Earth Sciences Data and Information Services Center, accessed June 2018, <https://doi.org/10.5067/GPM/GMI/GPM/GPROF/2A/05>.
- , and —, 2017: GPM DPR Precipitation Profile L2A 1.5 hours 5 km V05. Goddard Earth Sciences Data and Information Services Center, accessed 2018, <https://doi.org/10.5067/GPM/DPR/GPM/2A/05>.
- , T. Kozu, J. Kwiatkowski, R. Meneghini, J. Awaka, and K. Okamoto, 2009: Uncertainties in the rain profiling algorithm

- for the TRMM precipitation radar. *J. Meteor. Soc. Japan*, **87A**, 1–30, <https://doi.org/10.2151/jmsj.87A.1>.
- , S. Seto, R. Meneghini, N. Yoshida, J. Awaka, M. Le, V. Chandrasekar, and T. Kubota, 2015: GPM/DPR level-2. Algorithm Theoretical Basis Doc., 68 pp., http://pps.gsfc.nasa.gov/Documents/ATBD_DPR_2015_whole_a.pdf.
- Ioffe, S., and C. Szegedy, 2015: Batch normalization: Accelerating deep network training by reducing internal covariate shift. arXiv, <https://arxiv.org/abs/1502.03167?context=cs>.
- JMA, 2000: New numerical analysis and forecast system (in Japanese). Japan Meteorological Agency Annual Rep. 33, 143 pp.
- Kidd, C., T. Matsui, J. Chern, K. Mohr, C. Kummerow, and D. Randel, 2016: Global precipitation estimates from cross-track passive microwave observations using a physically based retrieval scheme. *J. Hydrometeorol.*, **17**, 383–400, <https://doi.org/10.1175/JHM-D-15-0051.1>.
- Kingma, D. P., and J. Ba, 2014: Adam: A method for stochastic optimization. arXiv, <https://arxiv.org/abs/1412.6980>.
- Kirstetter, P. E., and Coauthors, 2012: Toward a framework for systematic error modeling of spaceborne radar with NOAA/NSSL ground radar–based National Mosaic QPE. *J. Hydrometeorol.*, **13**, 1285–1300, <https://doi.org/10.1175/JHM-D-11-0139.1>.
- Kirstetter, P.-E., Y. Hong, J. J. Gourley, Q. Cao, M. Schwaller, and W. Petersen, 2014: Research framework to bridge from the Global Precipitation Measurement mission core satellite to the constellation sensors using ground-radar-based National Mosaic QPE. *Remote Sensing of the Terrestrial Water Cycle, Geophys. Monogr.*, Vol. 206, Amer. Geophys. Union, 61–79, <https://doi.org/10.1002/9781118872086.ch4>.
- Kummerow, C. D., and L. Giglio, 1994: A passive microwave technique for estimating rainfall and vertical structure information from space. Part I: Algorithm description. *J. Appl. Meteor.*, **33**, 3–18, [https://doi.org/10.1175/1520-0450\(1994\)033<0003:APMTFE>2.0.CO;2](https://doi.org/10.1175/1520-0450(1994)033<0003:APMTFE>2.0.CO;2).
- , and Coauthors, 2001: The evolution of the Goddard profiling algorithm (GPROF) for rainfall estimation from passive microwave sensors. *J. Appl. Meteor.*, **40**, 1801–1820, [https://doi.org/10.1175/1520-0450\(2001\)040<1801:TEOTGP>2.0.CO;2](https://doi.org/10.1175/1520-0450(2001)040<1801:TEOTGP>2.0.CO;2).
- , S. Ringerud, J. Crook, D. Randel, and W. Berg, 2011: An observationally generated a priori database for microwave rainfall retrievals. *J. Atmos. Oceanic Technol.*, **28**, 113–130, <https://doi.org/10.1175/2010JTECHA1468.1>.
- , D. L. Randel, M. Kulie, N.-Y. Wang, R. Ferraro, S. J. Munchak, and V. Petković, 2015: The evolution of the Goddard profiling algorithm to a fully parametric scheme. *J. Atmos. Oceanic Technol.*, **32**, 2265–2280, <https://doi.org/10.1175/JTECH-D-15-0039.1>.
- Kunkee, D. B., G. Poe, D. Boucher, S. Swadley, Y. Hong, J. Wessel, and E. Uliana, 2008: Design and evaluation of the first Special Sensor Microwave Imager/Sounder. *IEEE Trans. Geosci. Remote Sens.*, **46**, 863–883, <https://doi.org/10.1109/TGRS.2008.917980>.
- LeCun, Y., Bengio, Y., and Hinton, G., 2015: Deep learning. *Nature*, **521**, 436–444, <https://doi.org/10.1038/nature14539>.
- Liu, C., E. J. Zipser, D. J. Cecil, S. W. Nesbitt, and S. Sherwood, 2008: A cloud and precipitation feature database from nine years of TRMM observations. *J. Appl. Meteor. Climatol.*, **47**, 2712–2728, <https://doi.org/10.1175/2008JAMC1890.1>.
- McCollum, J., and R. Ferraro, 2003: Next generation of NOAA/NESDIS TMI, SSM/I, and AMSR-E microwave land rainfall algorithms. *J. Geophys. Res.*, **108**, 8382, <https://doi.org/10.1029/2001JD001512>.
- Meyer, H., M. Kühnlein, T. Appelhans, and T. Nauss, 2016: Comparison of four machine learning algorithms for their applicability in satellite-based optical rainfall retrievals. *Atmos. Res.*, **169**, 424–433, <https://doi.org/10.1016/j.atmosres.2015.09.021>.
- Meyers, P. C., and R. R. Ferraro, 2016: Precipitation from the Advanced Microwave Scanning Radiometer 2. *IEEE J. Sel. Top. Appl. Earth Obs. Remote Sens.*, **9**, 2611–2618, <https://doi.org/10.1109/JSTARS.2015.2513666>.
- , —, and N.-Y. Wang, 2015: Updated screening procedures for GPROF2010 over land: Utilization for AMSR-E. *J. Atmos. Oceanic Technol.*, **32**, 1015–1028, <https://doi.org/10.1175/JTECH-D-14-00149.1>.
- Muth, C., W. A. Webb, W. Atwood, and P. Lee, 2005: Advanced technology microwave sounder on the National Polar-Orbiting Operational Environmental Satellite System. *Proc. IEEE Int. Conf. on Geoscience and Remote Sensing Symp.*, Seoul, South Korea, IEEE, 99–103, <https://doi.org/10.1109/IGARSS.2005.1526113>.
- NASA, 2018: GPROF2017 Version 1 and Version 2 (used in GPM V5 processing). Algorithm Theoretical Basis Doc., 65 pp., https://pps.gsfc.nasa.gov/Documents/ATBD_GPM_V5B_April15_2018.pdf.
- Olson, W., 2017: GPM DPR and GMI Combined Precipitation L2B 1.5 hours 5 km V05. Goddard Earth Sciences Data and Information Services Center, accessed 2018, <https://doi.org/10.5067/GPM/DPRGMI/CMB/2B/05>.
- , and H. Masunaga, 2016: GPM Combined Radar-Radiometer Precipitation. Algorithm Theoretical Basis Doc., 63 pp., https://pmm.nasa.gov/sites/default/files/document_files/Combined_algorithm_ATBD.V04.rev_.pdf.
- , S. Y. Hong, C. D. Kummerow, and J. Turk, 2001: A texture-polarization method for estimating convective-stratiform precipitation area coverage from passive microwave radiometer data. *J. Appl. Meteor.*, **40**, 1577–1591, [https://doi.org/10.1175/1520-0450\(2001\)040<1577:ATPMFE>2.0.CO;2](https://doi.org/10.1175/1520-0450(2001)040<1577:ATPMFE>2.0.CO;2).
- Petković, V., and C. D. Kummerow, 2017: Understanding the sources of satellite passive microwave rainfall retrieval systematic errors over land. *J. Appl. Meteor. Climatol.*, **56**, 597–614, <https://doi.org/10.1175/JAMC-D-16-0174.1>.
- , —, D. L. Randel, J. R. Pierce, and J. K. Kodros, 2018: Improving the quality of heavy precipitation estimates from satellite passive microwave rainfall retrievals. *J. Hydrometeorol.*, **19**, 69–85, <https://doi.org/10.1175/JHM-D-17-0069.1>.
- Romanov, P., G. Gutman, and I. Csiszar, 2000: Automated monitoring of snow cover over North America with multispectral satellite data. *J. Appl. Meteor.*, **39**, 1866–1880, [https://doi.org/10.1175/1520-0450\(2000\)039<1866:AMOSCO>2.0.CO;2](https://doi.org/10.1175/1520-0450(2000)039<1866:AMOSCO>2.0.CO;2).
- Sanò, P., G. Panegrossi, D. Casella, A. C. Marra, L. P. D’Adderio, J. F. Rysman, and S. Dietrich, 2018: The Passive Microwave Neural Network Precipitation Retrieval (PNPR) algorithm for the CONICAL scanning Global Microwave Imager (GMI) radiometer. *Remote Sens.*, **10**, 1122, <https://doi.org/10.3390/rs10071122>.
- Shimoda, H., 2005: GCOM missions. *Proc. IEEE Int. Conf. on Geoscience and Remote Sensing Symp.*, Seoul, South Korea, IEEE, 4201–4204, <https://doi.org/10.1109/IGARSS.2005.1525844>.
- Skofronick-Jackson, G., W. Berg, C. Kidd, D. B. Krischbaum, W. A. Petersen, G. J. Huffman, and Y. N. Takayabu, 2018: Global Precipitation Measurement (GPM): Unified precipitation estimation from space. *Remote Sensing of Clouds and Precipitation*, C. Andronache, Ed., Springer, 175–193, https://doi.org/10.1007/978-3-319-72583-3_7.

- Sorooshian, S., K. Hsu, X. Gao, H. V. Gupta, B. Imam, and D. Braithwaite, 2000: Evaluation of PERSIANN system satellite-based estimates of tropical rainfall. *Bull. Amer. Meteor. Soc.*, **81**, 2035–2046, [https://doi.org/10.1175/1520-0477\(2000\)081<2035:EOPSS>2.3.CO;2](https://doi.org/10.1175/1520-0477(2000)081<2035:EOPSS>2.3.CO;2).
- Tan, J., W. A. Petersen, P. Kirstetter, and Y. Tian, 2017: Performance of IMERG as a function of spatiotemporal scale. *J. Hydrometeor.*, **18**, 307–319, <https://doi.org/10.1175/JHM-D-16-0174.1>.
- , —, G. Kirchengast, D. C. Goodrich, and D. B. Wolff, 2018: Evaluation of Global Precipitation Measurement rainfall estimates against three dense gauge networks. *J. Hydrometeor.*, **19**, 517–532, <https://doi.org/10.1175/JHM-D-17-0174.1>.
- Tang, G., D. Long, A. Behrangi, C. Wang, and Y. Hong, 2018: Exploring deep neural networks to retrieve rain and snow in high latitudes using multisensor and reanalysis data. *Water Resour. Res.*, **54**, 8253–8278, <https://doi.org/10.1029/2018WR023830>.
- Tang, L., Y. Tian, and X. Lin, 2014: Validation of precipitation retrievals over land from satellite-based passive microwave sensors. *J. Geophys. Res. Atmos.*, **119**, 4546–4567, <https://doi.org/10.1002/2013JD020933>.
- Tapiador, F. J., C. Kidd, V. Levizanni, and F. S. Marzano, 2004: A neural networks-based fusion technique to estimate half-hourly rainfall estimates at 0.1° resolution from satellite passive microwave and infrared data. *J. Appl. Meteor.*, **43**, 576–594, [https://doi.org/10.1175/1520-0450\(2004\)043<0576:ANNFTT>2.0.CO;2](https://doi.org/10.1175/1520-0450(2004)043<0576:ANNFTT>2.0.CO;2).
- Wang, N.-Y., K. Gopalan, and R. I. Albrecht, 2012: Application of lightning to passive microwave convective and stratiform partitioning in passive microwave rainfall retrieval algorithm over land from TRMM. *J. Geophys. Res.*, **117**, D23203, <https://doi.org/10.1029/2012JD017812>.
- Wilks, D. S., 2011: *Statistical Methods in the Atmospheric Sciences*. 3rd ed. International Geophysics Series, Vol. 100, Academic Press, 704 pp.
- Zhang, J., and Coauthors, 2011: National Mosaic and Multi-Sensor QPE (NMQ) system: Description, results, and future plans. *Bull. Amer. Meteor. Soc.*, **92**, 1321–1338, <https://doi.org/10.1175/2011BAMS-D-11-00047.1>.
- , and Coauthors, 2016: Multi-Radar Multi-Sensor (MRMS) quantitative precipitation estimation: Initial operating capabilities. *Bull. Amer. Meteor. Soc.*, **97**, 621–638, <https://doi.org/10.1175/BAMS-D-14-00174.1>.