

1 Species and size selectivity of two midwater trawls used in an acoustic survey of the Alaska
2 Arctic

3

4

5 Alex De Robertis^{1*}, Kevin Taylor¹, Kresimir Williams¹, and Christopher D. Wilson¹

6

7

8

9 ¹ Alaska Fisheries Science Center, National Marine Fisheries Service, National Oceanic and
10 Atmospheric Administration, 7600 Sand Point Way NE, Seattle, WA 98115, USA.

11

12 *corresponding author: tel: +1 206 526 4789; fax: +1 206 526 6723; alex.derobertis@noaa.gov

13

14

15

16

17

18

19

20

21

22

23

24 Abstract:

25 Acoustic-trawl (AT) survey methods are widely used to estimate the abundance and
26 distribution of pelagic organisms. This technique relies on estimates of size and species
27 composition from trawl catches along with estimates of the acoustic properties of these animals
28 to convert measurements of acoustic backscatter into animal abundance. However, trawls are
29 selective samplers, and if the catch does not represent the size and species composition of the
30 animals in the acoustic beam the resulting abundance estimates will be biased. We conducted an
31 experiment to quantify trawl selectivity for species encountered during an AT survey of the
32 Alaska Arctic. The pelagic assemblage in this environment was dominated by small young-of-
33 the-year (age-0) fishes and jellyfish, which may be poorly retained in trawls. A large midwater
34 trawl (Cantrawl) and a smaller midwater trawl (modified Marinovich) were used during the
35 survey. The Marinovich was equipped with 8 small-mesh recapture nets which were used to
36 estimate the probability that an individual that enters the trawl is retained. In addition, paired
37 hauls were made with the Cantrawl and Marinovich to estimate the difference in selectivity
38 between the two trawls. A statistical model was developed to combine the catches of the
39 recapture nets and the paired hauls to estimate the length-dependent selectivity of the trawls for
40 the most abundant species (e.g., age-0 fishes and jellyfish). The analysis indicated that there
41 was substantial size and species selectivity: although the modified Marinovich generally had a
42 higher catch per unit effort, many of the animals encountered in this environment were poorly
43 retained by both trawls. The observed size and species selectivity of the trawls can be used to
44 select appropriate nets for sampling pelagic fishes, and correct survey estimates for the biases
45 introduced in the trawl capture process.

46

47 Key words: Acoustic Surveys, Trawl Selectivity, Midwater Trawl, Chukchi Sea, Echo surveys,
48 Arctic zone, Fish Trawling, Escapement, Recapture Net

49

50

51 1. Introduction

52 Acoustic-trawl (AT) survey methodology relies on trawl sampling to estimate the species and
53 size composition of sound-scattering organisms. The catches from survey trawls are used to
54 convert observations of volume backscattering into animal abundance (Simmonds and
55 MacLennan, 2005). However, fishing gear is selective (i.e. there are size and species differences
56 in the probability of capture), and the trawl catch is likely to have a different size and species
57 composition than the population in the volume sampled (MacLennan, 1992, Wileman et al.,
58 1996, Bethke et al., 1999). If the trawl gear is size or species selective this can cause substantial
59 biases in AT abundance estimates (Nakashima 1990, Bethke et al., 1999, Williams, 2013).
60 Biases in trawl-based species or size composition introduce errors in all size or species classes in
61 AT surveys. This occurs because the acoustic measurement detects backscatter from all species
62 (and sizes) present in the acoustic beam, and this echo energy is converted to species abundance
63 based on the acoustic scattering expected from the animals retained in the trawl (Bethke et al.,
64 2010). For example, in the case of a mixture of strong and weak sound scattering organisms,
65 underestimates in the proportion of the strong scatterers due to net selectivity will result in
66 comparatively large overestimates of the weakly scattering organisms, as a larger proportion of
67 the observed backscatter is allocated to the weakly scattering organisms in the calculation of
68 animal abundance from acoustic backscatter (e.g. McClatchie and Coombs, 2005).

69 Trawls used in commercial fishing are species and size selective, and there has been
70 considerable interest in quantifying and altering the selectivity of trawls to reduce unwanted
71 bycatch (reviewed in MacLennan 1992, Wileman et al., 1996). However, the size and species
72 selectivity of survey trawls is commonly assumed to be negligible (i.e. catchability is constant
73 across species and size classes), and trawl catches are often used to estimate fish abundance with

74 no correction for trawl selectivity. Trawls capture fish primarily by exploiting herding behavior
75 (Wardle, 1984, 1993), and the probability of retention in the trawl is often strongly size and
76 species dependent (Nakashima, 1990, Wardle, 1993, Williams et al., 2011). When fish
77 aggregations are dominated by a single species, and size classes are spatially segregated, trawl
78 selectivity may have relatively minor impacts on acoustic estimates of abundance. However, in
79 many environments, fish occur in aggregations of mixed species and sizes, and the species and
80 size compositions of acoustic scatterers are inferred from trawl samples. The assumption of
81 negligible selectivity is likely to be untenable in these mixed species or size class situations, and
82 trawl selectivity is likely to introduce large biases into AT survey results. For example,
83 Williams (2013) found that accounting for trawl selectivity in an area of mixed age aggregations
84 of walleye pollock resulted in large underestimates of the poorly retained juvenile pollock and
85 comparatively small changes in the biomass of adults.

86 This study was a part of a large-scale baseline survey of the Arctic Ecosystem integrated
87 survey (Arctic Eis) of the eastern Alaska Chukchi Sea in 2012 and 2013. A large midwater trawl
88 (Cantrawl) was used for the AT survey in 2012 to estimate the abundance and distribution of
89 near-surface and midwater fishes. The trawl had been used in earlier surface trawl surveys and
90 was used in the 2012 and 2013 surveys to continue that surface trawl survey time series (Farley
91 et al., 2009, Eisner et al., 2013). During the 2012 AT survey, it became clear that the fish
92 assemblage in the eastern Chukchi Sea was dominated by small and/or juvenile fishes which
93 were likely to be poorly retained by the Cantrawl. During the 2013 survey, a smaller modified
94 midwater herring trawl (hereafter mod-Marinovich) was used to target acoustically observed fish
95 aggregations, as it was expected to be better at retaining the small size classes of fishes present in
96 the survey area in 2012.

97 This work aims to quantify the size and species selectivity of the two trawls used in the
98 Arctic Eis AT surveys. The information is necessary to correct the trawl-based estimates of
99 species and size composition used to convert acoustic backscatter to species abundances so that
100 accurate and comparable estimates of animal density are generated from the two surveys. A two-
101 part experiment was conducted in 2013 in which 1) the mod-Marinovich was equipped with
102 small-mesh recapture nets to capture fishes that escaped from the trawl, and 2) a series of paired
103 trawls with the Cantrawl and mod-Marinovich were conducted during the survey. The results of
104 these fishing trials are analyzed jointly in a model framework to estimate the size-dependent
105 selectivity of the trawls for the abundant species.

106 2. Materials and Methods

107 2.1 Trawl sampling

108 A series of hauls with the mod-Marinovich trawl equipped with small-mesh recapture nets to
109 capture fish exiting out the trawl meshes, as well as back-to-back trawl hauls with the mod-
110 Marinovich and a large Cantrawl 400/601 rope trawl were conducted as part of an
111 interdisciplinary survey of the Chukchi Sea. These midwater trawl hauls were conducted aboard
112 the F/V *Bristol Explorer*, a chartered 55 m commercial stern trawler during an AT survey
113 conducted between 7 August and 11 September 2013 (Fig. 1). Both nets were fished with 5 m²
114 alloy doors at a vessel speed of $\sim 2 \text{ m s}^{-1}$ during daylight hours. The trawl opening during
115 fishing (measured after the doors had spread the net and the net depth was stable) was observed
116 with a Wesmar trawl sonar attached to the headrope, and the depth of the trawl was measured
117 with Seabird SBE-39 temperature and pressure recorders attached to the headrope.

118 The Cantrawl is ~198 m long, has a 122 m headrope, and is constructed with ropes at the
119 leading edge of the net followed by meshes reducing from 162 to 1.2 cm stretched length in the
120 codend liner (Farley et al., 2009). The Cantrawl was equipped with floats to keep the headrope
121 near the surface and towed for 30 min at predetermined locations. A trawl vertical opening of
122 19.7 ± 2.7 m (mean \pm SD) and a horizontal opening of 45.8 ± 3.6 m was measured while surface
123 trawling.

124 The mod-Marinovich herring trawl is ~31 m long, has a 12 m headrope, and is
125 constructed as a symmetrical 4 seam box trawl with meshes reducing from 6.4 cm in the wings to
126 3.8 cm in the aft panel (Fig. 2). The body of the trawl is constructed from four panels. The
127 aftmost panel was covered by 2 by a 3 mm knotless oval mesh liner. Hereafter, the two forward
128 panels are referred to collectively as the forward section, the remaining unlined panel as the aft
129 section, and the rear lined panel as the codend (Fig. 2). The trawl was modified from the original
130 design to allow it to be fished effectively (i.e. with minimal overspreading of the net) with the
131 same 5 m² trawl doors used for the Cantrawl by adding larger wings and fishing it with 55 m
132 bridles. A trawl vertical opening of 5.7 ± 0.6 m (mean \pm SD) and a horizontal opening of $8.3 \pm$
133 0.9 m was observed while fishing.

134 The mod-Marinovich was equipped with recapture nets designed to recapture organisms
135 that escape from inside the trawl by exiting through the trawl meshes (e.g. Zijlsta, 1969,
136 Nakashima, 1990, Matsushita et al., 1993, Williams et al., 2011). The trawl was divided into the
137 codend and 8 additional partitions, defined by each trawl side (i.e. top, bottom, left, right), with
138 each side divided into front and aft sections (Fig. 2). Recapture nets were attached to the outside
139 of the trawl at the center of each of the 8 partitions (Fig. 2). The recapture nets were made of the
140 same 2 by 3 mm oval mesh as the mod-Marinovich codend liner, and were constructed with a

141 mouth opening as a rhombus with 1.2 m sides and a 2.6 m long body reducing into a codend. The
142 recapture nets, which were dyed black to minimize their visibility, covered approximately 3.1 %
143 of the trawl surface area: 2.2 % of the meshes in the forward section, and 5.5 % of the meshes in
144 the aft section (Fig. 2).

145 The mod-Marinovich was fished in 30 hauls in which all 8 recapture nets and the codend
146 were sampled. Although the recapture nets were permanently attached to the mod-Marinovich,
147 they were not sampled on all trawl hauls due to the effort required to sample the catches. On
148 several occasions, catch was lost from one or more nets from inadvertently opened codend(s).
149 Data from these hauls were not used.

150 A total of 14 paired hauls were conducted when the mod-Marinovich and Cantrawl were
151 fished over a similar trawl path near the surface (Fig. 1). These comparison hauls were
152 conducted by first fishing the Cantrawl and then towing the mod-Marinovich over the reciprocal
153 tow path. During these hauls, the Cantrawl headrope depth averaged 3.2 ± 2.8 m (mean \pm SD)
154 and the footrope depth averaged 22.7 ± 2.3 m. The mod-Marinovich, which could not be fished
155 as close to the surface, had an average headrope depth of 15.0 ± 5.1 m and a footrope depth of
156 20.3 ± 4.9 m during the paired surface hauls. The catches in the recapture nets on the mod-
157 Marinovich were sampled on 9 of the 14 paired hauls (i.e. 5 paired hauls in which the recapture
158 nets were not sampled are included in the analysis).

159 Trawl catches were weighed, subsampled if large, and the catch was enumerated and
160 identified to species where possible. Fork lengths of a subsample of up to 50 fishes and bell
161 diameters of up to 50 undamaged jellyfishes were measured to the nearest 1.0 mm using an
162 electronic measuring board (Towler and Williams, 2010). The volume (V) sampled by each net

163 was computed by estimating the mouth opening as an ellipse based on the mean horizontal and
164 vertical mouth opening (a , b) observed on each haul with the trawl sonar, and multiplying this by
165 the distance fished (d ; $V = \pi \cdot a/2 \cdot b/2 \cdot d$). The surface area of the mouth opening of the
166 Cantrawl averaged (\pm SD) $708 \pm 97 \text{ m}^2$, and the mouth opening of the mod-Marinovich was $36 \pm$
167 2 m^2 , which means that the Cantrawl sampled ~ 20 times more volume per unit distance towed.

168

169 2.2 Description of mod-Marinovich escapement pattern

170 The catches in the recapture nets were used to describe the rate of escapement in different
171 sections of the mod-Marinovich trawl. The proportion p of the individuals of a given species
172 entering the trawl mouth that either escapes from a trawl partition or is captured in the codend
173 was calculated as

$$174 \quad p_i = \sum_s (c_{mar,s,i} / f_{mar,i}) / \sum_{s,i} (c_{mar,s,i} / f_{mar,i}), \quad (1)$$

175 where i represents the mod-Marinovich trawl partition (i.e. the 8 partitions covered by recapture
176 nets and the codend), s represents the trawl station, $c_{mar,s,i}$ represents the number of individuals
177 captured at station s in partition i , and $f_{mar,i}$ is the fraction of the meshes in trawl partition i
178 covered by the 2 by 3 mm oval mesh in the recapture nets and the codend (Fig. 2).

179 Confidence intervals for p_i were estimated by drawing bootstrap samples with
180 replacement from the recapture net trawl hauls in which the species of interest was captured. In
181 a given realization, a bootstrap sample was assembled by randomly drawing a series of trawl
182 stations s' with replacement from the subset of the original series of stations s in which the
183 species was captured (i.e. randomly draw from the subset of hauls where the species was

184 captured as many times as there are hauls where the species was captured). The proportion of
185 fish retained in each trawl section was computed using s' and equation 1. Approximate 95%
186 confidence intervals of p_i were estimated by finding the 2.5 and 97.5% percentiles from 10^5
187 bootstrap realizations.

188 We compared the size of fish escaping from different sections of the trawl with the length
189 of those captured in the codend in an analogous manner. For each fish k captured in trawl
190 partition i at station s , the length discrepancy from the mean length of fish in the codend catch
191 was estimated as

$$192 \quad \Delta l_{k,i,s} = l_{k,i,s} - \overline{l_{s,cod}}, \quad (2)$$

193 where $\overline{l_{h,cod}}$ is the mean length of the fish captured in the codend at station s . The mean
194 difference in length for fish in partition i relative to the codend was computed as

$$195 \quad \overline{\Delta l_i} = \sum_{k,s} \Delta l_{k,i,s} / n_i, \quad (3)$$

196 where n_i is the total number of fish captured in partition i in all hauls. Approximate confidence
197 intervals for Δl_i were estimated by drawing bootstrap samples with replacement from the
198 recapture net trawl hauls as described above.

199

200 2.3 Estimation of trawl selectivity

201 A statistical analysis was undertaken to estimate the selectivity of the mod-Marinovich
202 and the Cantrawl from the recapture nets and the paired hauls. An analysis framework was
203 developed that allowed the catch data from both the paired trawls and the recapture nets on the

204 mod-Marinovich to be considered simultaneously. The observed catch in the trawl partitions in
 205 the mod-Marinovich (codend, 4 aft recapture nets, 4 front recapture nets), and the catch in the
 206 Cantrawl codend was fit to a statistical model as follows:

207 The proportion of the total catch at a given station (i.e. a sampling location) of length class l
 208 expected in the mod-Marinovich codend can be expressed as

$$209 \quad p_{mar,l} = r_{mar,l} \cdot \rho_{mar} \quad , \quad (4)$$

210 where $r_{mar,l}$ is the probability that a fish of length l entering the mod-Marinovich is retained in
 211 the codend, and ρ_{mar} is the fraction of the total volume sampled at this station by the mod-
 212 Marinovich i.e. $\rho_{mar} = V_{mar}/(V_{mar}+V_{can})$, where V_{mar} is the volume sampled by the mod-
 213 Marinovich net and V_{can} is the volume sampled by the Cantrawl. $r_{mar,l}$ was modeled as a length-
 214 dependent logistic function parameterized in terms of the length at which 50% of fish are
 215 retained (L_{50}), and the selection range (SR ; length in cm between 25% and 75% retention):

$$216 \quad r_{mar,l} = (1 + \exp(\frac{k(L_{50}-l)}{SR}))^{-1} \quad , \quad (5)$$

217 where l is length in cm and $k = 2 \log(3)$ (Millar, 1993). The corresponding probability of
 218 escapement at length l is $1 - r_{mar,l}$.

219 The proportions of the total catch of length l expected in the mod-Marinovich aft and
 220 forward recapture nets are:

$$221 \quad p_{mar,aft,l} = (1 - r_{mar,l}) \cdot \rho_{mar} \cdot (1 - e) \cdot f_{mar,aft} \quad , \quad (6)$$

$$222 \quad p_{mar,fwd,l} = (1 - r_{mar,l}) \cdot \rho_{mar} \cdot e \cdot f_{mar,fwd} \quad , \quad (7)$$

223 Where e is a fitted parameter representing the fraction of the mod-Marinovich escapement
 224 occurring in the forward panel, and f_{aft} and f_{fwd} are the fractions of the aft and forward mod-
 225 Marinovich sections covered by recapture nets (0.055 and 0.022, respectively – see Fig. 2).

226 The proportion of the total catch of length class l expected in the Cantrawl codend is

$$227 \quad p_{can,l} = r_{can,l} \cdot (1 - \rho_{mar}), \quad (8)$$

228 where $r_{can,l}$ is the probability that a fish entering the Cantrawl mouth is retained in the codend,
 229 which has the same logistic form as $r_{mar,l}$.

230 The total number of fish (U) in the volume sampled by all trawls deployed at each trawl
 231 station s (i.e. $V_{mar,s} + V_{can,s}$) can be estimated by dividing the catch of that length class by the
 232 expected proportion of animals retained in the trawl partitions i and summing over length
 233 classes:

$$234 \quad U_s = \sum_l \left(\sum_i c_{i,s,l} / \sum_i p_{i,s,l} \right). \quad (9)$$

235 Note that this allows for cases where only some trawl partitions were sampled to be included in
 236 the analysis (e.g. stations where the Cantrawl was not deployed are handled by setting the
 237 volume sampled by the Cantrawl ($V_{can,s}$) and the Cantrawl codend catch ($C_{can,s}$) for that station to
 238 zero).

239 The predicted total catch y in each partition i at each station is estimated as

$$240 \quad y_{i,s} = p_i \cdot U_s. \quad (10)$$

241 The size-dependent selectivity in the mod-Marinovich and Cantrawl (r_{mar} and r_{can}) and e , the
 242 proportion of the mod-Marinovich escapement in the forward panel were fit by maximizing

243 agreement of the observed (c) and predicted (y) catches over all partitions i (i.e. mod-Marinovich
244 codend, 8 partitions sampled by recapture nets, and the Cantrawl codend) and all stations s by
245 maximizing the following log likelihood function:

$$246 \quad LL = \sum_s \sum_i (c_{i,s} \cdot \ln(y_{i,s}) - y_{i,s}), \quad (11)$$

247 which assumes that the probability of capture follows a Poisson distribution, similar to the model
248 described by Kirkwood and Walker (1986). Thus, fitting the model for a given species or species
249 group produces maximum likelihood estimates for 5 parameters, two for the logistic function
250 r_{mar} , two for the logistic function r_{can} , and e , the proportion of Marinovich escapement occurring
251 in the front panel, which is not of immediate interest, but must be accounted for in the model.

252 Interpretation of the selectivity estimates derived by the model depends on the estimate of
253 volumetric abundance of a given organism in the path of both trawls (i.e. U_s in equation 9). This
254 is most easily understood when the volumetric density of the organism estimated from the mod-
255 Marinovich (i.e. catch and escapement combined) exceeds the catch rate in the Cantrawl codend
256 (as is generally the case – see section 3.4). In this situation, a selectivity of 1 corresponds to the
257 case in which all the catch in the mod-Marinovich occurs in the codend (i.e. no catch of this
258 species/size class in the recapture nets, indicating that all individuals entering the net are
259 retained). If the volumetric density estimated from the Cantrawl codend exceeds the density
260 estimated from the Marinovich (i.e. catch and escapement), the Cantrawl is assumed to be fully
261 selective for this species/size class (i.e. selectivity =1). However, in either case, the results can
262 be interpreted in terms of the ratio of the Cantrawl to mod-Marinovich selectivity.

263 The model was fit to catches of the following species groups: Arctic cod (*Boreogadus*
264 *saida*), saffron cod (*Eleginus gracilis*), Pacific sand lance (*Ammodytes hexapterus*), capelin

265 (*Mallotus villosus*), all other fishes combined (various species pooled, ~ 23.2 % of catch was
266 larvae), and jellyfishes (86.4% *Cyanea capillata* , 13.4 % *Chrysaora melanaster*). The results
267 for Arctic cod are presented in detail, as this group was abundant and was consistently captured
268 in the survey area. The results for other species groups are summarized.

269 A bootstrap resampling procedure was employed to evaluate the uncertainty in the
270 parameters of the two logistic functions. For each species group, a bootstrap sample was
271 assembled by establishing the number of cases in which the species was captured in 1) paired
272 hauls 2) paired hauls with Marinovich recapture nets and 3) mod-Marinovich hauls with
273 recapture nets. A bootstrap sample comprised of this number of trawls of each type (i.e. paired,
274 paired with recapture nets, mod-Marinovich with recapture nets) was randomly drawn with
275 replacement from the trawls in which at least 1 individual was caught. The parameters of the
276 selectivity function were fit to the data with the model described above for 10^5 bootstrap
277 samples.

278 The resulting L_{50} and SR parameters were often variable, and were particularly uncertain
279 for species and size ranges where few individuals were captured, as there was little data to
280 constrain the fit in these areas of the curves. We chose to use the 90% confidence intervals of
281 the parameters to characterize variability of the parameter estimates, as in some bootstrapped
282 samples the total catch was low and the tails of the bootstrap parameter estimates were highly
283 skewed. To evaluate the relative performance of these two nets for the size distribution of
284 animals encountered in the survey, the selectivity parameters were used to calculate the average
285 probability (pc) that fishes with a size distribution corresponding to that in the environment are
286 retained by the trawl, i.e.

287
$$pc = \sum_l r_l \cdot PL_l, \tag{12}$$

288 where $r(l)$ is as in eq.5, PL_l is the proportion of the population in length class l in the
 289 environment. PL was estimated from the mod-Marinovich hauls equipped with recapture nets,
 290 as this accounts for the size distribution of fish that are not retained in the trawl as well as those
 291 that are captured,

292
$$PL_l = (\sum_{s,i} c_{mar,i,l,s} / (f_{mar,i} \cdot v_{mar,s})) / (\sum_{s,i,l} c_{mar,i,l,s} / (f_{mar,i} \cdot v_{mar,s})), \tag{13}$$

293 where l represents length, i represents the mod-Marinovich trawl partition (codend, 4 aft
 294 recapture nets, 4 forward recapture nets), s represents station, $c_{mar,i}$ represents the number of
 295 individuals captured in mod-Marinovich partition i , and $f_{mar,i}$ is the fraction of the
 296 meshes covered by the recapture nets or codend liner in partition i (e.g. Fig. 2), and $v_{mar,s}$ is the
 297 volume sampled by the mod-Marinovich in at station s . The quantity pc quantifies the
 298 probability that a fish of the size distribution estimated to occur in the environment (PL) was
 299 captured by the trawl, and is contingent on the assumption that the volumetric density of this
 300 organism is reflected by U_s . In addition, the selectivity at size of 4 cm (i.e. $l = 4$ cm) was
 301 computed to allow for comparisons of selectivity across species at common size. The bootstrap
 302 estimates of mean selectivity at the size distribution estimated to occur in the environment (PL),
 303 and the estimated selectivity at a common size of 4 cm are presented as boxplots.

304 3 Results

305 3.1 Trawl catches

306 The fishes captured in the trawl hauls were generally small. For example, in the 14
 307 paired hauls, they were primarily < 12 cm in size (Fig. 3A). The mod-Marinovich captured ~

308 11.2 times more fishes in the codend per unit volume sampled than the Cantrawl in the paired
309 hauls (Fig. 3A). The species composition of fishes (Fig. 3 B-C) in the trawl catch differed ($p <$
310 0.001; Chi-squared test on the aggregated trawl catch from the 14 paired trawl hauls), with
311 Pacific sand lance, other fishes, and jellyfish comprising a higher proportion of the catch in the
312 mod-Marinovich than in the Cantrawl. In contrast, capelin and Arctic cod made up a higher
313 proportion of the Cantrawl catch than the mod-Marinovich catch.

314 A substantial number of individuals were caught in the recapture nets, indicating that
315 there was high escapement from the mod-Marinovich (Table 1). In the 30 mod-Marinovich
316 hauls with recapture nets, 36.8 % of all fishes captured were retained in the recapture nets, which
317 covered only ~3.1 % of the unlined meshes in the trawl body, and 63.2 % of the total was
318 captured in the codend. Depending on the species, between 28-52 % of the total catch was
319 captured in the recapture nets (Table 1). The individuals captured in the codend were
320 consistently larger than those in the recapture nets (Table 1), which indicates that larger
321 specimens were preferentially retained in the mod-Marinovich codend.

322 When expressed as catch per unit volume sampled, catch rates tended to be higher for the
323 mod-Marinovich than the Cantrawl. For example, in the 7 paired trawls with mod-Marinovich
324 recapture nets where Arctic cod were caught, an average of 83.4 juvenile Arctic cod were
325 calculated to enter the net (i.e. mod-Marinovich codend + escapees) for every 1000 m³ of water
326 sampled, with 6.9 fish (~ 8.3 %) retained in the mod-Marinovich codend, and 2.3 fish (~ 2.7 %)
327 fish retained in the Cantrawl codend (Fig. 4 A). This indicates that the majority of small Arctic
328 cod escaped the trawls, and that the probability of capture in the Cantrawl is lower than in the
329 mod-Marinovich. On average, smaller individuals were caught in the recapture nets,
330 intermediate sizes in the mod-Marinovich codend, and larger specimens in the Cantrawl (Fig.

331 4B). This indicates that there is a low probability that juvenile Arctic cod entering the nets will
332 be retained in the codends, and that the probability of retention is size-dependent, with smaller
333 individuals less likely to be retained.

334

335 3.2 Escapement pattern in the mod-Marinovich

336 Juvenile Arctic cod and Pacific sand lance exhibited similar escapement patterns (Fig. 5
337 A-D). The majority of individuals entering the trawl exited the net through the aft trawl meshes
338 (Fig. 5 A, C), with only a small fraction of individuals retained in the trawl codend. There was
339 higher escapement of Arctic cod in the bottom of the trawl compared to the sides and the top
340 panel (Fig. 5 B), and Pacific sand lance escapement exhibited a similar pattern but with
341 overlapping confidence intervals (Fig. 5D).

342 Juvenile saffron cod, which are similar in size (Table 1) and gross morphology to
343 juvenile Arctic cod tended to exhibit a higher proportion of escapement in the forward meshes of
344 the mod-Marinovich than the other species (Fig. 5 E), and higher escapement in the bottom and
345 side panels than in the top trawl panel (Fig. 5 F). Saffron cod were relatively poorly retained in
346 the codend compared to Arctic cod, with 3.3 % (95% CI: 2.7-4.5 %) of juvenile saffron cod and
347 8.7% (95% CI: 7.0-9.8 %) of juvenile Arctic cod retained in the codend (Fig 5 A, E). Capelin
348 escapement occurred primarily in the aft part of the mod-Marinovich (Fig 5 G). The probability
349 of capelin escapement in the top, sides and bottom of the trawl exhibited broadly overlapping
350 confidence intervals. However, there is an indication that capelin escapement may be high in the
351 top panel, which was not the case for the other species.

352 When interpreting these results, one should keep in mind that these estimates are for
353 escapement out of the entire panel, and that the panels differ in size. For example, in the case of
354 Arctic cod, 36.3 % of the total escapement was estimated to occur in the bottom aft panel, which
355 represents 7.2 % of the unlined trawl meshes. Thus, escapement expressed per unit surface area
356 would be much higher in the aft panel than depicted in Fig. 5. Additionally, the sample sizes
357 differ substantially among species (Table 1), and the size of the confidence intervals reflects both
358 the variability in behavior and the sample size.

359 Mean fish size tended to be slightly larger in the codend than in the recapture nets (Fig.
360 6), but there was substantial inter-haul variability in the mean size of fish capture in the various
361 recapture nets, as shown by the overlap in the bootstrap confidence intervals. Arctic and saffron
362 cod captured in the forward and aft recapture nets were consistently smaller than those captured
363 in the codend (Fig. 6 A, E). Capelin captured in the forward recapture nets tended to be smaller
364 than those in the aft recapture nets and codend (Fig. 6 G). Pacific sand lance captured in the
365 different net partitions did not differ substantially in size. The catches of all species in the top,
366 side and bottom recapture nets were similar in mean length (Fig. 6 B, D, E, F).

367

368 3.4 Estimates of trawl size and species selectivity

369 The numerical abundance and size distribution of fishes in the codends of both trawls and
370 those calculated to escape from the meshes of the mod-Marinovich trawl (e.g. Fig. 4 A-B) were
371 used to fit logistic size selection curves for each trawl. Overall, the estimates were highly size-
372 dependent and for small size classes, relatively low for both trawls (Fig. 7). The mod-
373 Marinovich retained a larger fraction of small organisms in the codend (i.e. compare Fig 7A and

374 B at < 5 cm). The Cantrawl selectivity for jellyfish and Pacific sand lance was particularly low.
375 The size-selectivity of the Cantrawl was steeper than that of the mod-Marinovich, with very low
376 selectivity for individuals < ~5 cm. On average, the mod-Marinovich had a higher probability of
377 capturing the (relatively small) species and size classes present in this environment than the
378 Cantrawl, with the exception of the larger size classes of capelin (see dotted line in Fig. 7).

379 The bootstrap analysis, which reflects between-haul variation in the number and size of
380 fish captured in the trawl partitions, indicates that the L_{50} and SR parameters are often highly
381 uncertain (Table 2). In some bootstrap realizations there was little size dependence, and the
382 selectivity curve was relatively flat (high SR), or selectivity decreased with size (negative SR).
383 In cases where size dependence was low (high absolute value of SR), L_{50} was often variable,
384 which contributed to the broad confidence intervals for L_{50} . However, the logistic curves
385 described by the combination of these parameters tended to be relatively constrained for the most
386 abundant species and size classes in the catch (e.g. see < 5 cm Arctic cod in Fig. 8). The
387 selectivity estimates tended to be less uncertain for the mod-Marinovich than the Cantrawl (e.g.
388 compare Fig. 8 A-B), as the estimates for the mod-Marinovich are based on more hauls and do
389 not depend solely on the paired trawl experiment, which has a limited sample size and is subject
390 to uncertainty introduced by differences in fish abundance in each trawl path.

391 Despite the variability in the parameter estimates, the conclusions drawn from the
392 analysis are relatively robust for the size ranges observed in the trawl catches. For example,
393 when the selectivity of the gear for 4 cm individuals as well as the size distribution estimated to
394 be in the environment is considered (Fig. 8), two main conclusions can be drawn: 1) there are
395 strong species-specific differences in the probability of capture. For example, Arctic cod are
396 substantially better retained than saffron cod of equivalent size (see Fig. 9 A-B, keeping in mind

397 that axes differ among plots). 2) Overall, the mod-Marinovich tends to be less selective than the
398 Cantrawl (i.e. Fig. 9, compare left and right box plots in a panel). There is a tendency in many
399 bootstrap realizations for larger capelin to be better retained by the Cantrawl than by the mod-
400 Marinovich (Fig. 9 D), but there is substantial overlap in the bootstrap estimates indicating that
401 this is not consistent among hauls.

402

403 4. Discussion

404 The trawl experiment revealed that there was substantial escapement of small fishes from
405 both the mod-Marinovich and Cantrawl midwater trawls. Escapement from the Cantrawl was
406 higher than the mod-Marinovich for most size/species classes encountered. In general, there was
407 less escapement from the mod-Marinovich, but even for this relatively small net, a surprisingly
408 small fraction ($< 10\%$) of the small fishes in this environment were retained in the codend. It is
409 possible that many of the small fishes in this environment exhibit relatively weak herding
410 responses to the meshes once they enter the trawl which results in a substantial fraction of
411 individuals encountering and then exiting from the meshes. The fish encountered in this study
412 were relatively small, and one should be careful not to extrapolate the resulting selectivity
413 estimates to larger size classes rarely encountered in these catches. The logistic function used to
414 describe size selectivity is constrained to be symmetric about a selectivity of 0.5 (Wileman et al.,
415 1996). Thus the selectivity for size classes absent from the catch cannot be estimated with any
416 confidence..

417 As documented in previous studies (Nakishima, 1990, Suuronen et al., 1997, Williams et
418 al., 2011), escapement was strongly size and species specific. Although both nets were size

419 selective, the Cantrawl exhibited very low retention of fishes $< \sim 5$ cm, which were abundant in
420 this environment. The Cantrawl was not very effective at capturing jellyfish, likely due to
421 negligible herding ability in response to the large meshes that comprise most of the trawl body.
422 Although there was substantial uncertainty in the parameters of the logistic selectivity functions,
423 there was less uncertainty in the selectivity of the mod-Marinovich for the most commonly
424 encountered species and size classes. The observed trawl selectivity indicates that ignoring trawl
425 selectivity and assuming that the trawl catch accurately represents species and size composition
426 has the potential to introduce substantial biases into AT and other trawl-based survey estimates.
427 Although the mod-Marinovich is a relatively small mesh trawl designed to capture small fishes, a
428 surprisingly large fraction of fish entering the trawl are lost through the meshes. The biases
429 introduced by this trawl selectivity, which will be more severe for the Cantrawl, will result in
430 over-estimates of large and easily captured individuals, and underestimates of the less easily
431 captured species and smaller size classes (Nakashima, 1990, Williams et al., 2011).

432 The catches in the recapture nets on the mod-Marinovich revealed that escapement differs
433 among sections of the trawl. As observed in previous studies employing recapture nets on
434 bottom (Zijlstra, 1969, Matsushita et al., 1993) and pelagic trawls (Nakashima, 1990, Suuronen
435 et al., 1997, Williams et al., 2011, 2013), escapement was size-dependent and tended to be
436 highest in the aft portion of the net. In the case of Arctic cod and Pacific sand lance, escapement
437 was highest in the bottom aft part of the trawl, as has been observed with juvenile pollock
438 (Williams et al., 2011). Escapement for saffron cod was more evenly distributed. It was high in
439 the bottom and sides of both the forward and aft panel, but relatively low in the top panel.
440 Escapement of capelin exhibited a different pattern, with higher escapement in the aft part of the
441 trawl and a tendency towards more escapement in the top rather than bottom panel as observed

442 for the other species. The behavior of capelin is consistent with the observations of Nakashima
443 (1990), who found that capelin escapement in a pelagic trawl tended to be upwards towards the
444 rear of the net.

445 The observed escapement pattern can be exploited to design more effective nets. For
446 example, the surprisingly high escapement of small fishes observed in the aft section of the mod-
447 Marinovich has motivated us to further modify this net by increasing the length of the aft section
448 to produce weaker flow out of the meshes, and reducing the mesh size to reduce escapement.
449 Smaller, fine-mesh trawls could potentially be used to more effectively sample small fishes such
450 as those abundant in the Arctic Eis survey area. However, small trawls are likely subject to
451 higher avoidance of species and size classes with well-developed swimming capabilities, and
452 may exhibit strong size selectivity. These uncertainties highlight the importance of evaluating
453 trawl selectivity to guide selection of appropriate trawl gear, and to correctly infer the size and
454 species composition in the environment from trawl catches.

455 The conclusions drawn from this analysis rest on several assumptions. The calculations
456 are based on the assumption that escapement from meshes covered by the recapture nets is
457 representative of meshes without recapture nets, which was not tested. However, recapture nets
458 of a similar design have not been reported to alter the behavior of fish relative to the surrounding
459 uncovered meshes (Nakashima 1990, Matsushita et al., 1993, Williams et al., 2013). In addition,
460 the escapement from the trawl is estimated based on the relatively small fraction of the net
461 covered by the recapture nets. Although the number of meshes covered by the recapture nets is
462 known, the relatively low coverage likely introduces substantial variability as the fraction of the
463 net which is covered by recapture nets is not the same as the fraction of escapees that is
464 recaptured in a given trawl haul, even if escapement from meshes covered by the recapture nets

465 is representative of meshes without recapture nets. This will contribute to the uncertainty in the
466 estimates of escapement, and larger or more recapture nets would reduce this uncertainty. We
467 did not observe strong gradients in size composition of escapees across recapture nets, which
468 indicates that the size distribution in the recapture net are a reasonable approximation of the size
469 distribution of the escapees from the entire net partition.

470 Furthermore, the analysis of the paired trawls assumes that the average fish density
471 encountered by the Cantrawl and the mod-Marinovich was equivalent. Although the depth range
472 sampled in the paired trawls overlapped substantially, the average headrope depth of the
473 Cantrawl, which was rigged as a surface trawl, was consistently shallower than the mod-
474 Marinovich headrope, and this may introduce biases in the selectivity values estimated for
475 species exhibiting strong near-surface vertical abundance gradients. In addition, it is likely that
476 at a given location, one of the trawls will encounter higher densities or different size distributions
477 due to small-scale patchiness. This will not result in a bias if the two nets encounter the same
478 densities on average, but will increase the variance of the counts in the trawl partitions. This
479 additional variance is captured as between-haul variation in the process of resampling the trawl
480 hauls to generate bootstrap confidence intervals (Millar and Fryer, 1999), and likely contributed
481 to the wide confidence intervals of the selectivity parameters.

482 We have estimated mesh selection (i.e. the probability that fish will be captured in the
483 codend as opposed to escaping through the meshes), which is only one component of selectivity
484 and does not include selection that takes place in front of the net itself (Wileman, 1996,
485 Suuronen et al., 1997, Heino et al., 2011). The fish in this Arctic environment are small, and
486 mesh selection is likely the primary cause of selectivity. While some species have been reported
487 to lack a strong herding response to the vessel, doors, and bridles (e.g walleye pollock,

488 Somerton, 2004, Williams et al., 2015), the processes occurring prior to the time the fish
489 encounter the mouth of a pelagic trawl remain poorly understood. In most cases, the catch rate
490 was substantially higher for the much smaller mod-Marinovich, which suggests that mesh
491 selection is an important factor in determining selectivity. The larger size classes of capelin may
492 be an exception as this was the only case where the Cantrawl captured more fish per unit volume
493 than the Marinovich. This may suggest that processes occurring prior to when the capelin
494 encountered the net, for example herding by the trawl wings, doors, or bridles, or escapement in
495 front of the trawl (Heino et al., 2011), may have played an important role in the capture of this
496 species. Alternately, because the Cantrawl headrope was fished near the ocean surface (~3 m
497 depth), whereas the average mod-Marinovich headrope depths were ~12 m deeper in the paired
498 comparisons, the increased Cantrawl catch rate may have occurred because greater densities of
499 capelin occurred above the depth sampled by the mod-Marinovich.

500 The impacts of trawl selectivity on acoustic surveys can be difficult to predict, as errors
501 in species composition that alter the relative abundance of one species or size class will affect the
502 proportion of backscatter assigned to all other species (Simmonds and MacLennan, 2005). The
503 impact of trawl selectivity depends on the species present, their degree of spatial overlap, their
504 size distributions, and their acoustic scattering properties, all of which interact (Williams et al.,
505 2011, De Robertis et al., this issue). A practical method to evaluate the impact of trawl
506 selectivity is to compare abundance estimates with and without accounting for trawl selectivity
507 on species and size composition. For example, in the Arctic Eis acoustic-trawl survey the
508 impacts of trawl selectivity on abundance estimates depend on the trawl gear used and are highly
509 species-dependent. In the case of the 2012 survey, the Cantrawl was used for midwater and
510 surface trawl sampling (De Robertis et al., this volume). The AT survey estimates use the

511 selectivity estimates derived in this study to allocate acoustic backscatter to species. However, if
512 the effects of trawl selectivity are ignored (i.e. by assuming that selectivity = 1 for all species and
513 sizes), the abundance estimate of capelin, which are well-retained and thus over-represented in
514 the catch, increases by > 3 fold (De Robertis et al., this issue). This over-estimate of the
515 abundance of capelin causes the abundance of other, more poorly retained species such as Arctic
516 and saffron cod to decrease by up to ~30 % in this scenario (i.e. backscatter from these species is
517 allocated to capelin). In 2013, the survey results are less sensitive to trawl selectivity estimates
518 as the high-backscatter regions were sampled with the less selective mod-Marinovich and the
519 corrected and uncorrected estimates are thus more similar (De Robertis et al., this issue).

520 In cases where selectivity is primarily attributable to processes occurring inside the net
521 rather than in front of the net, recapture nets provide a viable method to estimate the selectivity
522 of midwater trawls used in acoustic-trawl surveys, which has been proven difficult to quantify
523 due to the large size of these nets. One practical advantage of the method employed here is that
524 it can be conducted without disruption to survey operations by deploying recapture nets on the
525 survey trawl during the survey. Trawl efficiency is influenced by conditions during capture such
526 as water temperature and light levels (Zijistra 1969, Suuronen et al., 1997, Williams et al, 2011,
527 2015). By conducting the trawl selectivity work throughout the survey, the range of conditions,
528 such as species and size distributions and environmental conditions (location, sea state,
529 temperature, time of day, light level, etc.) during the trawl selectivity work will be representative
530 of conditions during the survey as a whole, thus reducing the impact of these potential biases.
531 Additionally, this sampling design will ensure that there will be greater sample sizes for many of
532 the more common species, resulting in higher certainty in the selectivity estimates for the most
533 important species. Despite the potential limitations of the methods used in this study, and the

534 relatively large confidence intervals in the selectivity estimates for less abundant species and size
535 classes, the recapture net technique provides a practical method for estimating the first-order
536 effects of trawl selectivity on an acoustic-trawl survey and other studies relying on midwater
537 trawl catches. This is preferable to making the common implicit assumption that the size and
538 species composition of organisms retained in a pelagic trawl reflects the size and species
539 distribution in the environment.

540

541 Acknowledgements

542 We are indebted to Pohl Petersen of Dantrawl Inc. for designing the modifications to the
543 Marinovich trawl net, David King and staff of the AFSC net shed for constructing the mod-
544 Marinovich, to Brian Haley and the crew of F/V *Bristol Explorer* for their skill in fishing the
545 trawls, and to the participants in Arctic EIS surveys for processing ‘one more pocket net’. Franz
546 Mueter, Stan Kotwicki, Dan Cooper, and Jeff Napp provided helpful comments on drafts on the
547 manuscript. This work was funded with qualified outer continental shelf oil and gas revenues by
548 the Coastal Impact Assistance Program, Fish and Wildlife Service, U.S. Department of the
549 Interior and by the Alaska Fisheries Science Center, NOAA. The findings and conclusions in
550 this paper are those of the authors and do not necessarily represent the views of the National
551 Marine Fisheries Service. Reference to trade names does not imply endorsement by the National
552 Marine Fisheries Service, NOAA.

553

554

555 References

556 Bethke, E., Arrhenius, F., Cardinale, M., Hakansson, N., 1999. Comparison of the selectivity of
557 three pelagic sampling trawls in a hydroacoustic survey. *Fisheries Research* 44 (1), 15-23.

558

559 Bethke, E., Gotze, E., Planque, B., 2010. Estimation of the catchability of redfish and blue
560 whiting for survey trawls in the Norwegian Sea. *Journal of Applied Ichthyology* 26, 47-53.

561

562

563 De Robertis, A., Taylor, K., Wilson, C., Farley, E., in review. Abundance and Distribution of
564 Arctic cod (*Boreogadus saida*) and other Pelagic Fishes over the U.S. Continental Shelf of
565 the Alaskan Northern Bering and Chukchi Seas Deep-Sea Research.

566

567 Eisner, L., Hillgruber, N., Martinson, E., Maselko, J., 2013. Pelagic fish and zooplankton species
568 assemblages in relation to water mass characteristics in the northern Bering and southeast
569 Chukchi seas. *Polar Biology* 36 (1), 87-113.

570

571 Farley, E.V., Murphy, J., Moss, J., Feldmann, A.M., Eisner, L., 2009. Marine ecology of western
572 Alaska juvenile salmon. *American Fisheries Society Symposium* 70, 307-239.

573

574 Heino, M., Porteiro, F.M., Sutton, T.T., Falkenhaus, T., Godo, O.R., Piatkowski, U., 2011.
575 Catchability of pelagic trawls for sampling deep-living nekton in the mid-North Atlantic.
576 *ICES Journal of Marine Science* 68 (2), 377-389.

577 Kirkwood, G. P., and Walker, T. I. 1986. Gill Net Selectivities for Gummy Shark, *Mustelus*
578 *antarticus* (Gunter), Taken in Southeastern Australian Waters. Australian Journal of Marine
579 and Freshwater Research, 37, 689-697.

580

581 McClatchie, S., Coombs, R.F., 2005. Low target strength fish in mixed species assemblages: the
582 case of orange roughy. Fisheries Research 72 (2-3), 185-192.

583

584 Maclennan, D.N., 1992. Fishing Gear Selectivity - an overview. Fisheries Research 13 (3), 201-
585 204.

586

587 Matsushita, Y., Inoue, Y., Shevchenko, A.I., Norinov, Y.G., 1993. Selectivity in the codend and
588 in the main body of the trawl. ICES mar. Sci. Symp. 196, 170-177.

589

590

591 Millar, R.B., 1993. Incorporation of between-Haul Variation Using Bootstrapping and
592 Nonparametric-Estimation of Selection Curves. Fishery Bulletin 91 (3), 564-572.

593

594 Millar, R. B., & Fryer, R. J. (1999). Estimating the size-selection curves of towed gears, traps,
595 nets and hooks. Rev. Fish. Biol. Fisher., 9, 89-116.

596

597 Nakashima, B.S., 1990. Escapement from a Diamond IX midwater trawl during acoustic surveys
598 for capelin (*Mallotus villosus*) in the Northwest Atlantic. J. Cons. int. Explor. Mer. 47, 76-
599 82.

600

601 Simmonds, E.J., MacLennan, D.N., 2005. Fisheries Acoustics 2nd. Ed. Blackwell Science LTD,
602 Oxford, UK 437 p.

603 Somerton, D.A. 2004. Do Pacific cod (*Gadus macrocephalus*) and walleye pollock (*Theregra*
604 *chalcogramma*) lack a herding response to the doors, bridles, and mudclouds of survey
605 trawls? ICES J. Mar. Sci. 61, 1186-1189.

606

607 Suuronen, P., Lehtonen, E., Wallace, J., 1997. Avoidance and escape behavior by herring
608 encountering midwater trawls. Fisheries Research 29, 13-24.

609

610 Towler, R., Williams, K., 2010. An inexpensive millimeter-accuracy electronic length measuring
611 board. Fisheries Research 106 (1), 107-111.

612

613 Wardle, C.S., 1984. Fish reactions to towed fishing gears ; p 167-195 in Experimental biology at
614 sea. A. MacDonald, Ed. Academic Press, New York.

615

616 Wardle, C.S., 1993. Fish behavior and fishing gear. p 609-643 in Behavior of teleost Fishes, T. J.
617 Pitcher, Ed Chapman and Hall. New York, 740 pp.

618

619 Wileman, D.A., Ferro, R.S.T., Fonteyen, R., Millar, R.B., (Eds), 1996. Manual of methods of
620 measuring the selectivity of towed fishing gears. ICES Cooperative Research Report 215,
621 126 pp.

622

623 Williams, K., Horne, J.K., Punt, A.E., 2015. Examining influences of environmental, trawl gear,
624 and fish population factors on midwater trawl performance using acoustic methods.
625 Fisheries Research 164, 94–101.
626

627 Williams, K., 2013. Evaluation of midwater trawl selectivity and its influence on acoustic-based
628 fish population surveys, Doctoral Dissertation, University of Washington. 166 pp.
629

630 Williams, K., Punt, A.E., Wilson, C.D., Horne, J.K., 2011. Length-selective retention of walleye
631 pollock, *Theragra chalcogramma*, by midwater trawls. ICES Journal of Marine Science 68
632 (1), 119-129.
633

634 Williams, K., Wilson, C., Horne, J.K., 2013. Walleye pollock (*Theragra chalcogramma*)
635 behavior in midwater trawls. Fisheries Research 143, 109-118.
636

637 Zijlstra, J.J., 1969. On the escapement of fish through the upper part of a herring trawl. FAO
638 Fish. Rep. 62, 671-680.
639

640

641 Table 1: Summary of the most abundant fishes captured in mod-Marinovich hauls equipped with
642 recapture nets. The number of hauls in which a given species was captured, and the total
643 numbers of individuals captured, as well as the number captured in the codend and all recapture
644 nets are listed. The mean and standard error of the fork length of the specimens and the number
645 of specimens measured are also given.

646

Species	# hauls	Total # captured	# in codend	# in recapture nets	Length (cm) in codend $\bar{x} \pm SE, (n)$	Length (cm) in recapture nets $\bar{x} \pm SE, (n)$
all fishes	30	63826	40310	23516	4.6 \pm 0.1 (2596)	3.7 \pm 0.2 (5814)
Arctic cod	28	38172	25077	13095	4.0 \pm 0.1 (941)	3.5 \pm 0.2 (2337)
Pacific sand lance	28	11762	8468	3294	5.8 \pm 0.1 (302)	5.3 \pm 0.1 (473)
saffron cod	16	4319	2057	2262	4.0 \pm 0.1 (371)	3.7 \pm 0.1 (863)
capelin	20	701	482	219	6.4 \pm 0.1 (169)	6.1 \pm 0.1 (98)

Table 2. Description of data used to fit logistic size selection for the mod-Marinovitch and Cantrawl trawls by species group, and the resulting parameter estimates. The number of individuals captured in the codend of each trawl, the number of hauls of each type where the species group was captured, and the parameters of the point estimates (i.e. estimated with all available data, see Fig. 6) of the logistic selection curves with bootstrap estimates of the 90% confidence intervals for these parameters are listed. L_{50} is the length in cm at 50% retention, and SR is the length in cm between 25 and 75% retention. In the case of the Cantrawl selectivity for Pacific sand lance, the point estimate of L_{50} and SR fall outside of the 90% bootstrap confidence interval.

Species Group	No. captured Marin. codend	No. captured Cantrawl codend	No. hauls paired only	No. hauls recapture only	No. hauls paired with recapture	Marin. L_{50} (cm) (90% CI)	Marin. SR (cm) (90% CI)	Can. L_{50} (cm) (90% CI)	Can. SR (cm) (90% CI)
Arctic cod	26550	23305	5	20	7	6.2 (5.4,7.2)	2.2 (1.6, 3.1)	5.6 (4.2, 6.1)	0.8, (0.1, 0.9)
saffron cod	2055	3406	0	8	5	13.0 (10.1, 26.1)	6.1 (4.2, 14.2)	6.8 (-11.3, 17.2)	1.1 (-0.9, 3.2)
Pacific sand lance	8672	532	4	11	8	13.6 (7.4, 25.4)	5.9 (2.1,15.5)	129.6 (-90.1, 87.0)	34.4 (-24.9,20.8)
capelin	496	13113	4	10	6	31.5 (-56.7, 73.7)	24.7 (-58.9, 63.7)	8.0 (-6.0, 25.8)	1.9 (-10.1, 15.5)
other fishes	5199	462	5	22	8	11.7 (10.1, 31.3)	5.3 (4.3, 15.7)	13.5 (9.7, 34.7)	2.7 (1.7, 8.2)
jellyfish	7598	1939	4	21	9	4.1 (2.0, 4.7)	1.8 (0.1, 2.1)	66.0 (-145.6, 397.1)	36.0 (-94.8, 236.8)

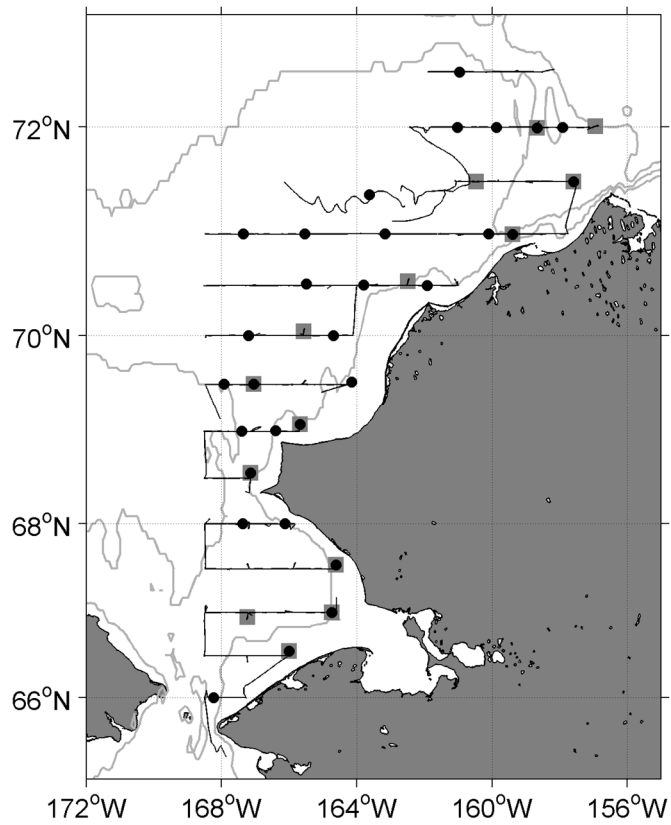
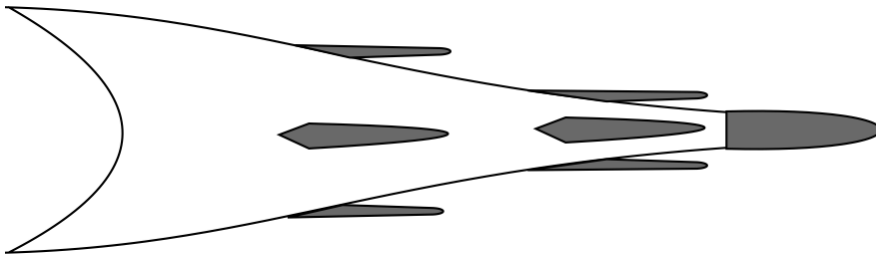


Figure 1. Map of the study area. The locations of paired Cantrawl and mod-Marinovich trawl stations are shown as grey squares, and stations where the mod-Marinovich was fished with 8 recapture nets are given as black circles. Locations with both a circle and a square indicate the trawl stations where paired trawls and resample nets were deployed. The vessel survey track is shown as a black line and the 25, 50 and 100 m depth contours are shown as grey lines.



Section	Forward	Aft	Codend
Stretched mesh size (cm)	6.4,6.0	4.8	3.8 cm with 0.3 cm liner
Approx. length (m)	2.9,3.2	4.3	3.3
Fraction sampled	0.022	0.055	1.0

Figure 2. Illustration of recapture nets used on mod-Marinovich fishing trials. The figure depicts the net viewed from the side with recapture nets on the forward and aft sections of the symmetrical top, side, and bottom panels visible. The two forward panels of different mesh sizes are designated as the forward section, the aft section as a single unlined panel, and the codend consists of the aft section lined with a fine-mesh liner (see section 2.1 for details). The sampling fraction represents the ratio of the number of meshes covered by the recapture net or the codend and the total number of unlined meshes in each section.

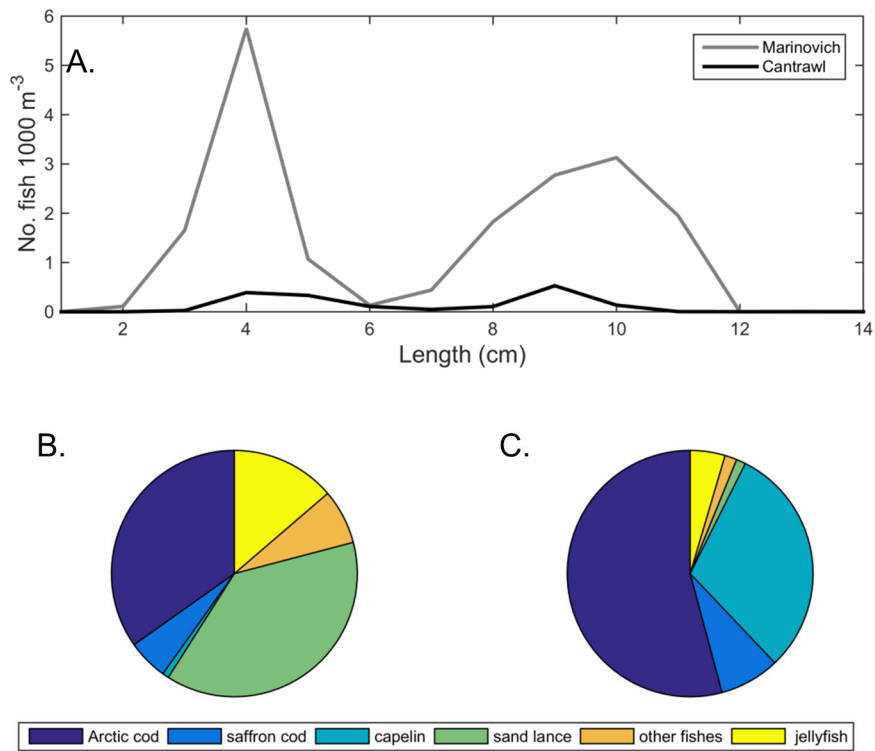


Figure 3. Summary of codend catch in the 14 locations where paired mod-Marinovich and Cantrawl hauls were conducted. A) Abundance of fishes by length captured by each trawl (all species combined). The pie graphs show the catch composition (by number) of B) the mod-Marinovich catch and C) the Cantrawl catch at these locations.

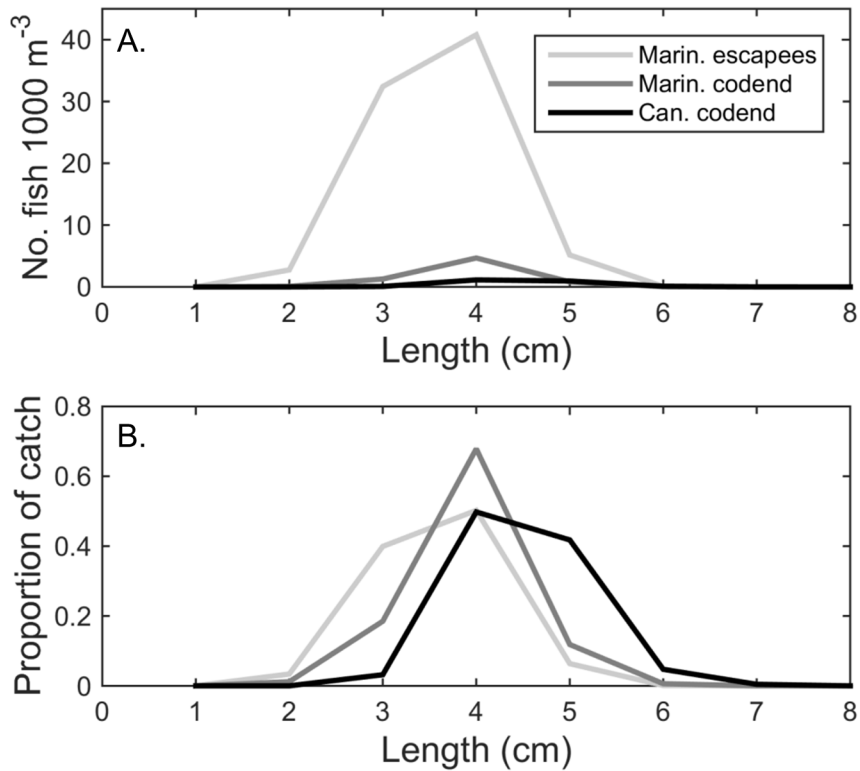


Figure 4. Abundance and size distribution of Arctic cod escaping from the mod-Marinovitch trawl, and those captured in the mod-Marinovitch and Cantrawl codends. The catches represent the catch in the 7 hauls where the mod-Marinovitch with recapture nets and Cantrawl net were deployed and Arctic cod were caught. A) Abundance of fish as a function of length estimated to escape from the mod-Marinovitch based on the recapture net catches and abundance of those captured in the codends of the mod-Marinovitch and Cantrawl trawls. Abundances of escapees are computed by extrapolating the recapture net escapement over the body of the net. B) Size distribution of juvenile Arctic cod in recapture nets, and the codends of the mod-Marinovitch and Cantrawl trawls.

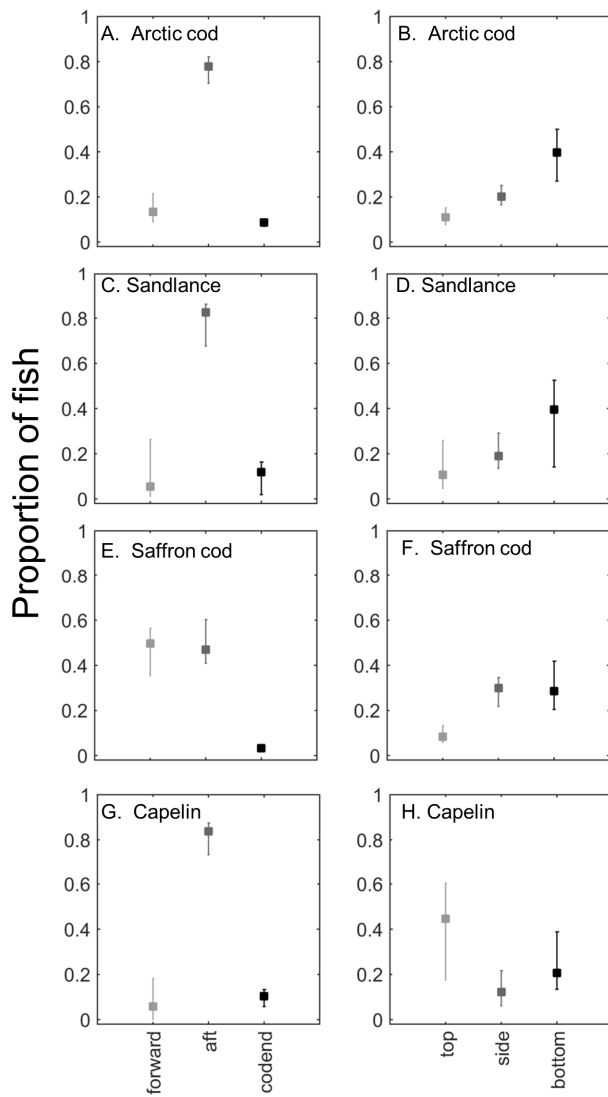


Figure 5. Escapement pattern in mod-Marinovitch for abundant fish species derived from recapture net catches. A-B) Arctic cod, B-C) Pacific sand lance, E-F) saffron cod, G-H) capelin. Panels on the left indicate the proportion of fish entering the trawl mouth estimated to either escape through the forward or aft net sections or be retained in the codend. Panels to the right depict the proportion of individuals expected to exit the net through the meshes in the top, either side (i.e. total escapement from both sides divided by 2), and bottom of the trawl. The points represent the observed means, and error bars represent 95% bootstrap confidence intervals.

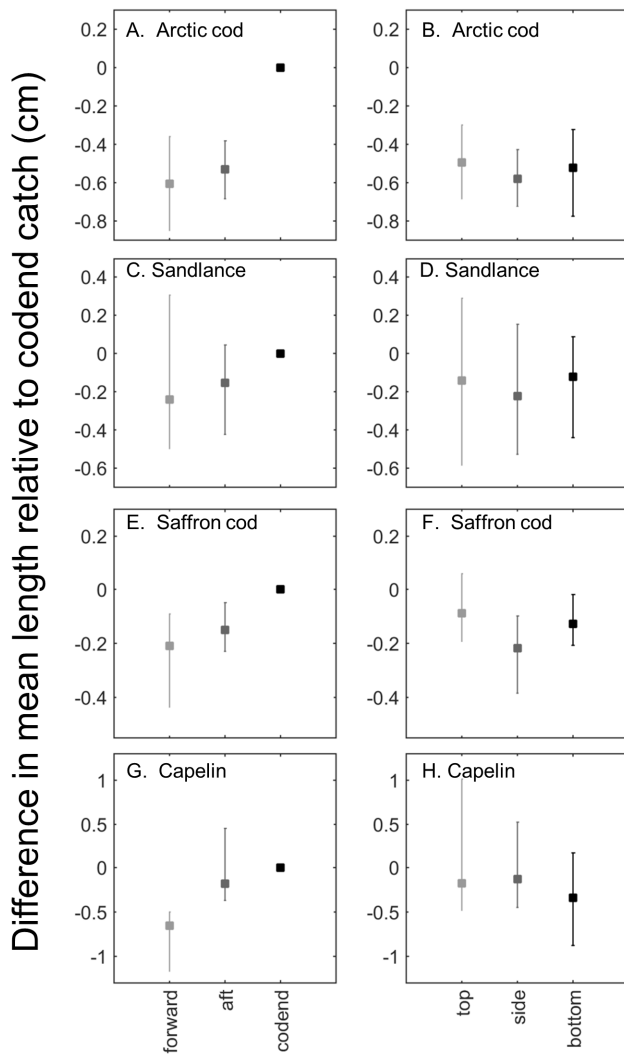


Figure 6. Size of fishes escaping from and retained in the mod-Marinovich based on catches in the codend and recapture nets. A-B) Arctic cod, B-C) Pacific sand lance, E-F) saffron cod, G-H) capelin. Panels on the left indicate the mean difference in length between fish captured in forward and aft recapture nets and those retained in the codend. Panels to the right depict the mean difference in length of fishes captured in the top, side and bottom recapture nets. The points represent the observed means, and error bars represent 95% bootstrap confidence intervals.

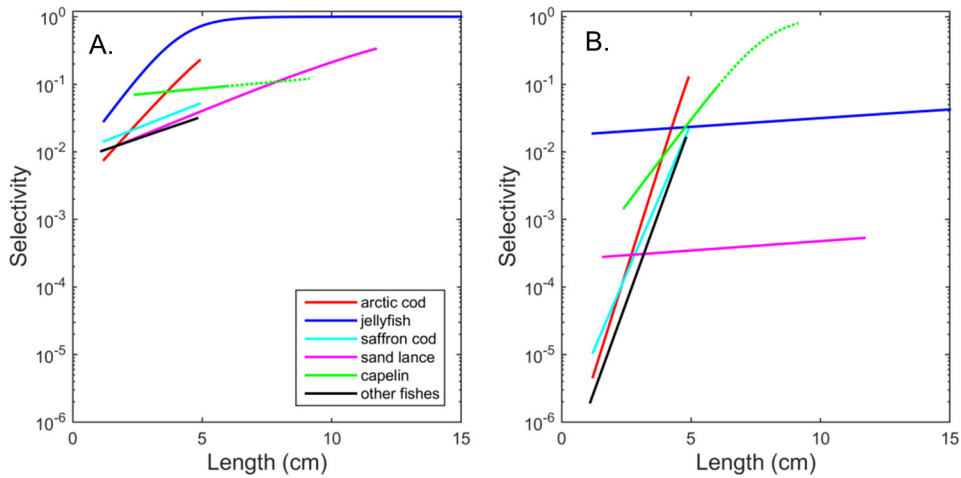


Figure 7. Estimates of size-specific selectivity by species group for A) mod-Marinovich and B) Cantrawl trawls derived from joint analysis of catches in the mod-Marinovich recapture nets and codend catches in both trawls. The logistic selectivity curves fitted in the model are depicted on semi-log plots as the probabilities of retention are low for small individuals. The predicted selectivity at a given size was higher for the mod-Marinovich than the Cantrawl except for the case of large capelin where the dotted green indicates that the calculated selectivity for capelin is higher for the Cantrawl. The curves extend over the size range encompassing 99% of the fish in the environment (as estimated by combining the mod-Marinovich codend catch with the recapture nets, equation 13). Note that the corresponding size range for jellyfish extends to 26 cm, but results are truncated to 15 cm to increase the visibility of the results for the other species.

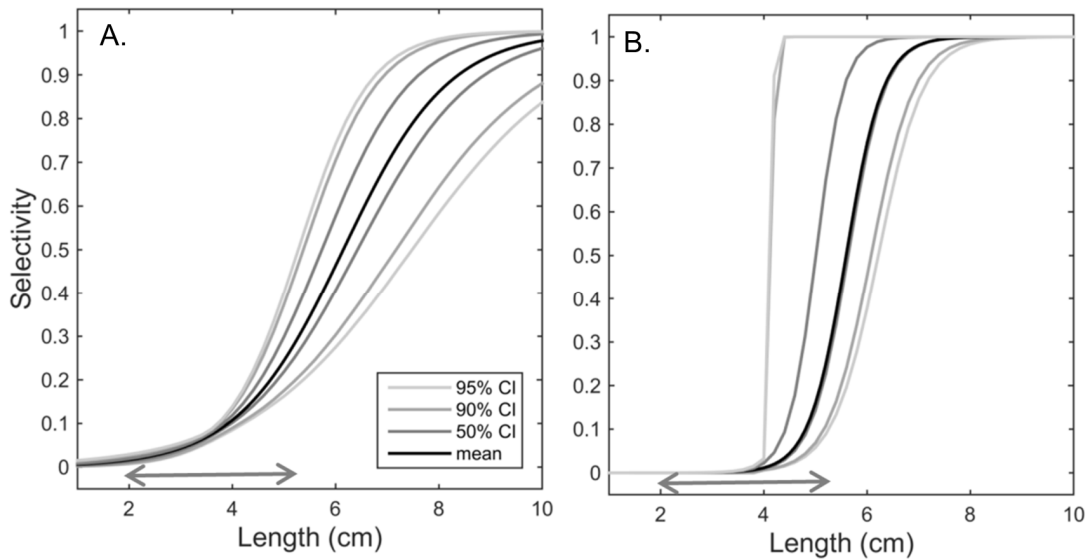


Figure 8. Confidence intervals (CI) of selectivity of A) mod-Marinovich and B) Cantrawl trawls on Arctic cod generated by taking the 95th, 90th and 50th percentiles of 10000 bootstrap estimates. The lower 50% CI in panel B is very close to the black line representing the mean value and is difficult to visualize. The arrows indicate the size range of 99 % of Arctic cod individuals as estimated from the mod-Marinovich catches.

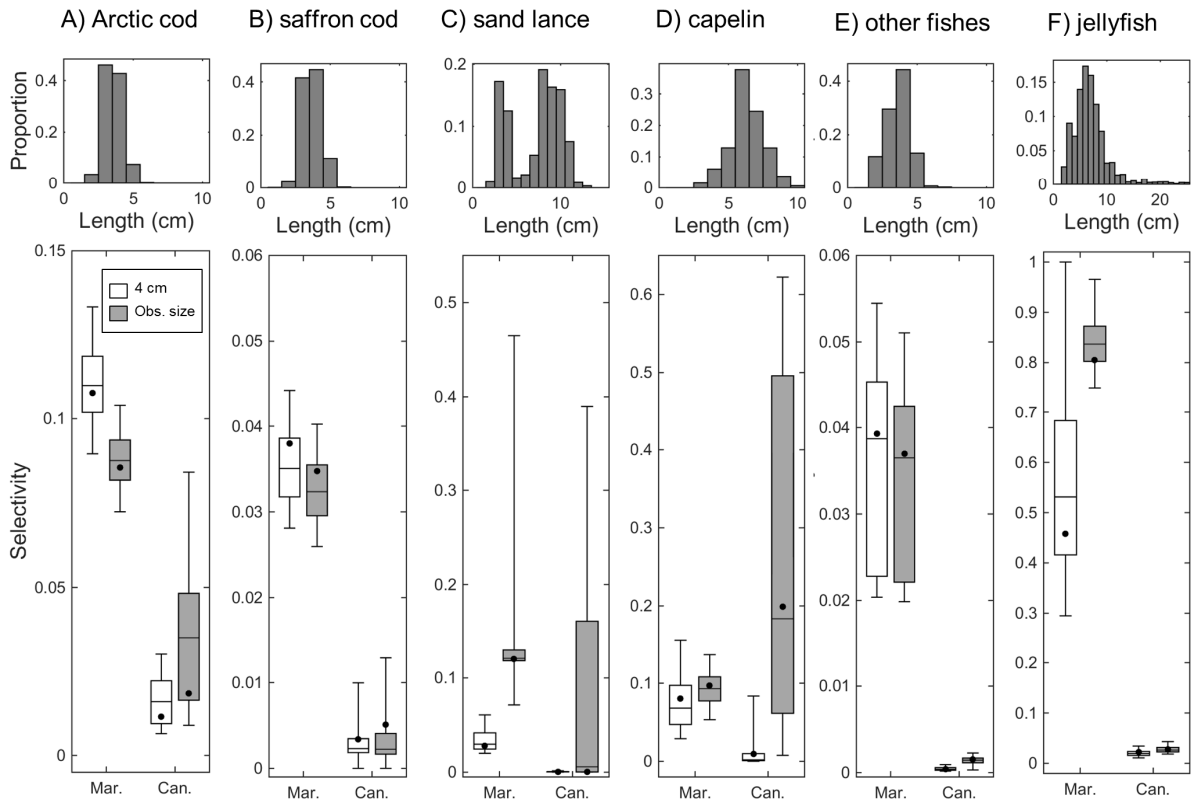


Figure 9. Bootstrap analysis of the variability in estimates of mod-Marinovich and Cantrawl selectivity for different species groups: A) Arctic cod, B) saffron cod, C) Pacific sand lance, D) capelin, E) other fishes, F) jellyfish. The top panel shows the size distribution estimated to be present in the environment based on 30 hauls with the mod-Marinovich equipped with recapture nets (eq. 13). The histograms extend over the size range encompassing at least 99% of the fish in the environment. The bottom panel shows box plots of bootstrapped probabilities of retention of a 4 cm individual (white boxes), and the probability of capturing animals with the size distribution in the upper plot. The boxplots represent the 5th, 25th, 50th, 75th and 95th percentiles of the selectivity estimate for an organism of a given size. Estimates of selectivity using parameters derived from all available data (Table 2) are shown as a black dot.