



# Regional Variation in Winter Foraging Strategies by Weddell Seals in Eastern Antarctica and the Ross Sea

Rob Harcourt<sup>1</sup>, Mark A. Hindell<sup>2</sup>, Clive R. McMahon<sup>1,2,3\*</sup>, Kimberly T. Goetz<sup>4,5</sup>, Jean-Benoit Charrassin<sup>6</sup>, Karine Heerah<sup>6</sup>, Rachel Holser<sup>7</sup>, Ian D. Jonsen<sup>1</sup>, Michelle R. Shero<sup>8</sup>, Xavier Hoenner<sup>9</sup>, Rose Foster<sup>10</sup>, Baukje Lenting<sup>11</sup>, Esther Tarszisz<sup>3</sup> and Matthew Harry Pinkerton<sup>4</sup>

<sup>1</sup> Department of Biological Sciences, Macquarie University, North Ryde, NSW, Australia, <sup>2</sup> Institute for Antarctic and Marine Studies, University of Tasmania, Hobart, TAS, Australia, <sup>3</sup> IMOS Animal Tagging, Sydney Institute of Marine Science, Mosman, NSW, Australia, <sup>4</sup> NIWA, Wellington, New Zealand, <sup>5</sup> National Oceanic and Atmospheric Administration, National Marine Fisheries Service, Alaska Fisheries Science Center, National Marine Mammal Laboratory, Seattle, WA, United States, <sup>6</sup> Sorbonne Université, CNRS/IRD/MNHIN, LOCEAN-IPSL, Paris, France, <sup>7</sup> Institute of Marine Sciences, University of California, Santa Cruz, Santa Cruz, CA, United States, <sup>8</sup> Woods Hole Oceanographic Institution, Woods Hole, MA, United States, <sup>9</sup> CSIRO Oceans and Atmosphere, CSIRO, Hobart, TAS, Australia, <sup>10</sup> Te Kura Aronukurangi, Gateway Antarctica, University of Canterbury, Canterbury, New Zealand, <sup>11</sup> Wellington Zoo, Wellington, New Zealand

## OPEN ACCESS

### Edited by:

David M. P. Jacoby,  
Lancaster University, United Kingdom

### Reviewed by:

Mia Wege,  
University of Pretoria, South Africa  
Natalie Elizabeth Wildermann,  
Texas A&M University Corpus Christi,  
United States

### \*Correspondence:

Clive R. McMahon  
clive.mcmahon@utas.edu.au

### Specialty section:

This article was submitted to  
Marine Megafauna,  
a section of the journal  
Frontiers in Marine Science

**Received:** 04 June 2021

**Accepted:** 16 August 2021

**Published:** 22 September 2021

### Citation:

Harcourt R, Hindell MA, McMahon CR, Goetz KT, Charrassin J-B, Heerah K, Holser R, Jonsen ID, Shero MR, Hoenner X, Foster R, Lenting B, Tarszisz E and Pinkerton MH (2021) Regional Variation in Winter Foraging Strategies by Weddell Seals in Eastern Antarctica and the Ross Sea. *Front. Mar. Sci.* 8:720335. doi: 10.3389/fmars.2021.720335

The relative importance of intrinsic and extrinsic determinants of animal foraging is often difficult to quantify. The most southerly breeding mammal, the Weddell seal, remains in the Antarctic pack-ice year-round. We compared Weddell seals tagged at three geographically and hydrographically distinct locations in East Antarctica (Prydz Bay, *Terre Adélie*, and the Ross Sea) to quantify the role of individual variability and habitat structure in winter foraging behaviour. Most Weddell seals remained in relatively small areas close to the coast throughout the winter, but some dispersed widely. Individual utilisation distributions (*UDI*, a measure of the total area used by an individual seal) ranged from 125 to 20,825 km<sup>2</sup>. This variability was not due to size or sex but may be due to other intrinsic states for example reproductive condition or personality. The type of foraging (benthic vs. pelagic) varied from 56.6 ± 14.9% benthic dives in Prydz Bay through 42.1 ± 9.4% *Terre Adélie* to only 25.1 ± 8.7% in the Ross Sea reflecting regional hydrographic structure. The probability of benthic diving was less likely the deeper the ocean. Ocean topography was also influential at the population level; seals from *Terre Adélie*, with its relatively narrow continental shelf, had a core (50%) *UD* of only 200 km<sup>2</sup>, considerably smaller than the Ross Sea (1650 km<sup>2</sup>) and Prydz Bay (1700 km<sup>2</sup>). Sea ice concentration had little influence on the time the seals spent in shallow coastal waters, but in deeper offshore water they used areas of higher ice concentration. Marine Protected Areas (MPAs) in the Ross Sea encompass all the observed Weddell seal habitat, and future MPAs that include the Antarctic continental shelf are likely to effectively protect key Weddell seal habitat.

**Keywords:** marine protected areas, Antarctica, marine ecosystems, bathymetry, ecosystem monitoring, Weddell seals

## INTRODUCTION

Where and how animals forage is fundamental to almost all aspects of their biology. Animal foraging strategies are determined by a complex mix of intrinsic (e.g., personality, sex, age, and reproductive status) and extrinsic (e.g., topography/bathymetry, resource availability, habitat) factors which shape the distribution and availability of prey and presence of predators (McNamara and Houston, 1986; Stephens and Krebs, 1986; Daunt et al., 2005; Stephens, 2008; Russell et al., 2015). The relative importance of these factors varies within and among species, but how a population or species responds to change, whether short- or long-term, will depend on a complex interplay of the relative importance of these factors and the advantages that they confer. Quantifying the role of intrinsic and extrinsic factors in determining foraging strategies can be difficult due to the dynamic nature of individual behaviour and environmental conditions (Humphreys et al., 2006). One way to disentangle competing factors is to apply a comparative approach wherein different demographic classes or geographic regions are compared (Catry et al., 2009). For example, regional comparisons of foraging behaviour in Northern fur seals, *Callorhinus ursinus*, (Nordstrom et al., 2013), and southern elephant seals, *Mirounga leonina*, (Hindell et al., 2016) have revealed habitat partitioning and distinct individual foraging strategies that differ by sex and/or location.

In the marine environment, megafauna often exhibit different foraging behaviours over continental shelves compared to open ocean environments, with more directed movement in the latter, presumably a function of its less complex, if not more dynamic, features (Sequeira et al., 2018). The Southern Ocean is one of Earth's most extreme marine environments, and its physical structure is highly variable seasonally and spatially (Constable et al., 2003). Coastal bathymetry in the Southern Ocean is complex, with shallow banks and deep canyons compounding dynamic and static aspects of the shelf environment, as illustrated by the inflow of Modified Circumpolar Deep water (mCDW) onto the shelf and the outflow of Antarctic Bottom water to the abyssal ocean (Williams et al., 2016). This is further confounded by the formation and movement of ice (Cavalieri et al., 1999) which influences primary production and food web dynamics (Nicol et al., 2000). At the same time, the Southern Ocean is a highly productive environment that attracts multiple predator species including migratory (e.g., southern elephant seals, killer whales, *Orcinus orca*) and resident species such as Weddell seals (*Leptonychotes weddellii*), Adélie (*Pygoscelis adeliae*), and emperor (*Aptenodytes forsteri*) penguins (Hindell et al., 2020). Although migratory species forage voraciously during spring and summer, they are excluded from the continental shelf regions around the Antarctic continent as the winter ice expands by up to 300% (Cavalieri et al., 1999; Brierley and Thomas, 2002). Of the resident species, only Weddell seals and Emperor penguins appear capable of surviving *in situ* year-round without obligative dispersal (Burns and Kooyman, 2001). Emperor penguins winter-over with males fasting while incubating their single egg, and females dispersing to forage (Kirkwood and Robertson, 1997), but Weddell seals continue to forage under the sea ice

and actively maintain breathing holes throughout the winter (Kooyman et al., 1981).

There is limited understanding of the extrinsic factors influencing Weddell seal distribution and foraging behaviour during winter. Pioneering investigations showed that an isolated colony at White Island, Ross Archipelago (78°8'S 167°24'E) foraged by diving to the sea floor, primarily feeding upon benthic prey (Castellini et al., 1984). Similarly, free-ranging Weddell seals off *Terre Adélie* and in Prydz Bay, stayed within 5 km of breathing holes, moving only as local food became depleted (Heerah et al., 2016). Heerah et al. (2016) also reported regional differences, with seals in Prydz Bay travelling up to three times the distance and spending half the time in hunting mode than seals off *Terre Adélie*. Hunting dives at both locations were pelagic, concentrated in areas of high ice concentration, over areas of relatively complex bathymetry and favouring water masses such as Antarctic Surface Water and mCDW (Heerah et al., 2013, 2016). However, other studies from the Ross Sea (Testa, 1994) and the Weddell Sea (Nachtseim et al., 2019; Photopoulou et al., 2020; Labrousse et al., 2021) reported dispersal of several hundred kilometres, albeit for the most part staying close to or over the continental shelf.

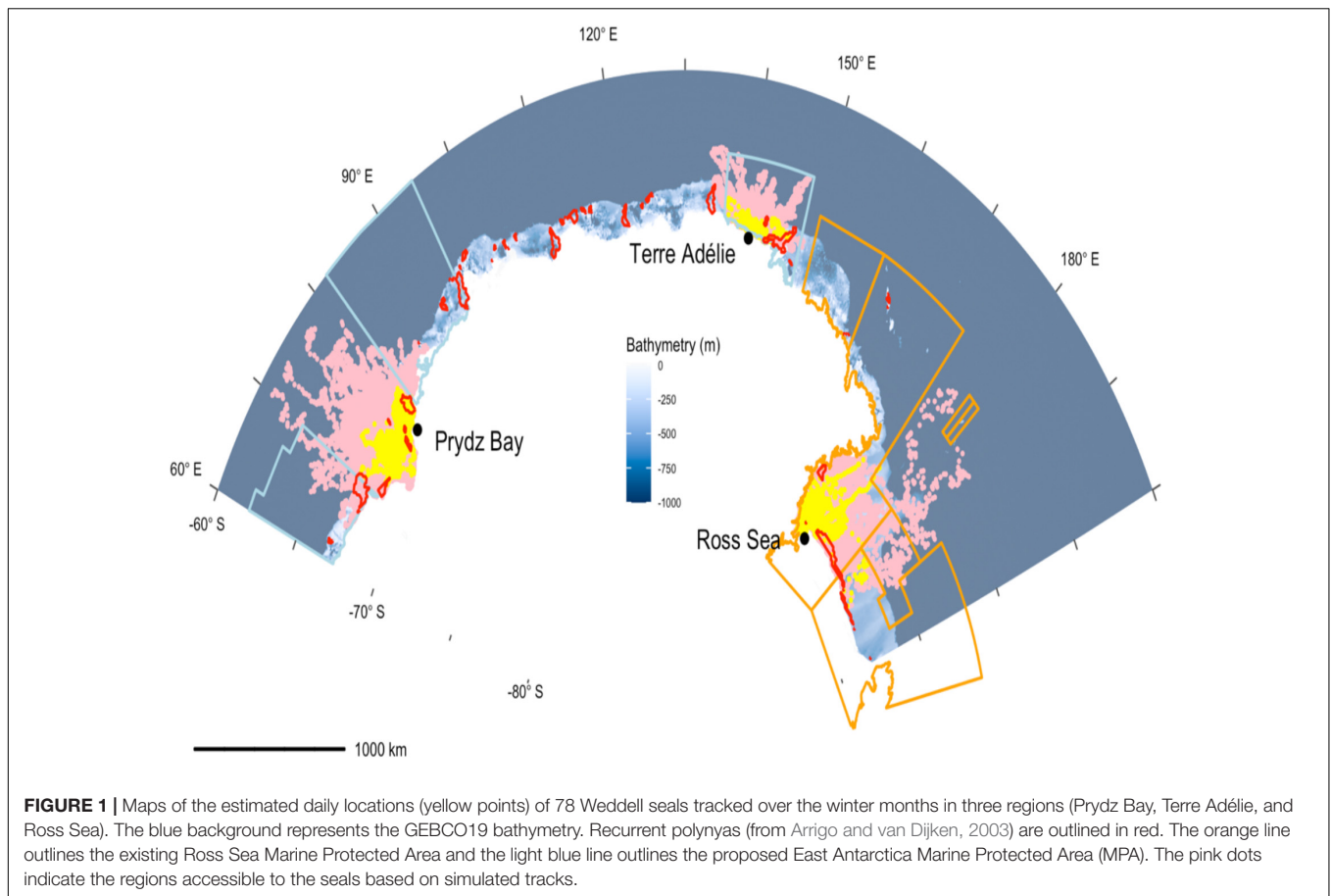
Intrinsic factors that influence foraging strategies of marine predators include age, sex, body-size, condition, reproductive status (Weise et al., 2010; Votier et al., 2017; Salton et al., 2019), intra-specific competition (Kuhn et al., 2014), and individual personality traits. Within a dynamic environment, distinct foraging strategies (e.g., epipelagic, mesopelagic or benthic) may coexist in a population (Cherel and Hobson, 2007); or be state-dependent with animals in poorer condition adopting riskier foraging behaviours (Beltran et al., 2021). Diverse foraging strategies are likely to arise because within a diverse prey field, different individuals will have greater foraging success depending on local conditions, and no single individual strategy will dominate under all conditions.

Weddell seal movements are constrained during winter by heavy pack-ice and access to open water to breathe. This study quantifies factors influencing the distribution and foraging behaviour of Weddell seals, by for the first time comparing three geographically discrete locations in Antarctica during the austral winter. We consider three aspects of Weddell seal foraging ecology: (i) individual differences in benthic vs. pelagic foraging and foraging trip characteristics; (ii) the relationship between winter distribution of individual seals and bathymetry and sea ice concentration; and (iii) comparing these physical characteristics with the overall utilisation distributions for each deployment location.

## MATERIALS AND METHODS

### Deployment Locations (Refer to Figures 1, 3) Prydz Bay (Davis Station)

Prydz Bay is the third largest embayment on the Antarctic coast and is located in the southern Indian Ocean sector. Prydz Bay is



broadly similar to its larger counterparts in the Weddell and Ross Seas. The bay is generally 500–600 m deep, but there are areas that are over 1000 m in depth (1085 m) adjacent to the Amery Ice Shelf. The bathymetry within Prydz Bay is complex and there are numerous shallow banks rising to 200 m depth e.g., Fram Bank and Four Ladies Bank (Nunes Vaz and Lennon, 1996).

### Terre Adélie (Dumont d’Urville Station, DDU)

Our study site in *Terre Adélie* was the only one not situated in major embayment resulting in a relatively narrow shelf, 120–130 km wide. There is a complex network of submarine canyons with the Jussieu and Cuvier canyons connecting the shelf break and inner-shelf depressions. Within the canyons, there is a steep corrugated slope with deep-sea channels between 2000 and 3000 m in depth. At the base of the slope is a gentler lower rise that in areas exceeds 3000 m deep. Over the shelf, shallow banks of 200 m (Adélie and Mertz Banks) alternate with deep inner-shelf depressions, some of which are large e.g., the D’Urville Trough, the George V and Adélie Basins (Koubbi et al., 2010).

### Ross Sea (Scott Base)

The Ross Sea continental shelf is extensive, unusually deep (mean depth 600 m) with a complex bathymetry which includes numerous deep troughs (up to 1200 m deep) and shallow banks (less than 200 m). Where the seals were tagged in the south, the region is dominated by the deep McMurdo Sound (up to

700 m). An important feature of the Ross Sea is the high rates of tidal current flow that occurs across the region which results in the resuspension of phytodetritus, in turn providing benthic suspension feeders with enhanced concentrations of food and transporting organic matter over large distances. This enhanced benthic productivity plays an important role in structuring the ecosystem, including the distribution of larger predator species such as Weddell seals (Smith et al., 2007).

### Tag Deployment and Data Processing

Weddell seals were equipped with either Satellite-Relayed Data Loggers (SRDLs) or Conductivity-Temperature-Depth SRDLs (CTD-SRDLs) manufactured by the Sea Mammal Research Unit, University of St Andrews (Boehme et al., 2009). Deployments took place at two sites in East Antarctica: in Prydz Bay near Davis Station ( $-68.58^\circ, 77.97^\circ$ ,  $n = 27$ , years: 2006, 2007, and 2011) and *Terre Adélie* near Dumont d’Urville Station, (DDU) ( $-66.66^\circ, 140.00^\circ$ ,  $n = 22$ , years: 2006, 2007, 2008, 2009, and 2019) and one site in the Ross Sea near Scott Base ( $-77.85^\circ, 166.76^\circ$ ,  $n = 29$ , years: 2014, 2016, and 2019). Note that the Prydz Bay and the *Terre Adélie* data sets (excluding 2019) formed the basis of Heerah et al. (2016). Only females were tagged in Prydz Bay and the Ross Sea, in *Terre Adélie* both sexes were tagged. The tags were all deployed following the annual moult in February. The capture, sedation and tagging procedures followed those described in

detail elsewhere (Mellish et al., 2010; Heerah et al., 2013; Shero et al., 2018), with the tags glued directly on the head of the seal. The tags recorded data on a seal's diving behaviour as well as *in situ* hydrographic conditions. Summaries of these data were transmitted via the polar-orbiting Argos satellite constellation whenever seals surfaced to breathe (Harcourt et al., 2019). Only seals for which the tag transmitted for longer than 50 days were included in the analyses.

## Diving Behaviour and Bathymetry

The dive data underwent an initial quality control to remove anomalously deep dives. This was done by calculating a lower edge for the *dive duration* vs. *dive depth* scatter plot (using a quantile regression set at 0.05). Dives that fell below this edge were deemed to be too deep for that duration (thereby requiring unrealistic rates of travel) and were flagged for removal. We also removed dives of less than 5 min duration as these were regarded as unlikely to be foraging, and dives deeper than  $-1000$  m as these were deeper than the Antarctic continental shelf (Padman et al., 2010). A location was recorded for each remaining dive by using a state-space-model with a 2 h time step and interpolating from the start time of each dive (Jonsen et al., 2020). Each dive was then allocated a bathymetric depth using GEBCO19 [GEBCO Compilation Group (GEBCO), 2021].

A scatter plot of bathymetric depth against the maximum dive depth of each dive indicated that 23.6% of the total 171,201 dives were more than 20 m deeper than the GEBCO19 bathymetry at that point (**Supplementary Figure 1**). The three sources of error that contribute to this mismatch are (1) errors in dive location estimates, (2) errors in the tag's depth sensors and (3) errors in the bathymetry. These uncertainties were problematic for allocating individual dives to a behavioural type (e.g., hunting "benthic" vs. "pelagic" prey). Therefore, we calculated the difference in depth between the GEBCO19 bathymetry for those dives that exceeded the bathymetry. We then calculated the 30 percentile of these differences, as this approximates 1 Standard Error of a distribution centred on the red line representing equivalence of a dives depth and estimated bathymetry at that point. This value was  $\sim 100$  m. Assuming that these mismatches were symmetrical about the 1:1 line in **Supplementary Figure 1**, we then categorised any dives that were within 100 m of the GEBCO bathymetry as "benthic" dives and those that were  $>100$  m from the bottom as "pelagic" dives. Dives more than 100 m deeper than the bottom was classified as "unknown" (**Supplementary Figure 1**).

We compared simple metrics of diving behaviours (maximum depth and dive duration) for benthic and pelagic dives between the three study sites using generalised linear mixed models (GLMMs) with individual seal as a random term and deployment location as the main effect. We also modelled the probability of making a benthic dive relative to the bathymetry at the location of that dive using a logistic GLMM, again with individual seal as a random term. We then used this model to make spatial predictions of where seals were likely to make benthic dives through the entire domain (defined by the extent of seal tracks) at each deployment location.

## Calculation of Utilisation Distributions

Utilisation Distributions are a common way of quantifying spatial use by individuals and populations (Laver and Kelly, 2008). We used a raster-based approach to calculate the utilisation distributions (*UD*), in which we recognised two types of Utilisation Distributions: (i) Individual utilisation distributions (*UD<sub>i</sub>*), that is the total area used by an individual seal and (ii) Sample utilisation distributions (*UDs*) representing the spatial use by the population of seals tagged at each deployment location. We used a raster with a  $5 \times 5$  km grid cell. This resolution corresponds to the estimated accuracy ( $\pm 5$  km) of state-space-model modelled ARGOS-based elephant seal locations using the same trackers (Jonsen et al., 2020). The *UDs* analysis required three rasters (**Supplementary Figure 2**); (i) the density (number) of seals that visited each  $5 \times 5$  km cell, (ii) the mean time spent by each seal in each cell (i.e., the overall mean of the individual *UD<sub>i</sub>* raster stack) (iii) the product of these two rasters provides a measure of overall habitat utilisation in terms of *seal days per cell*. This value is a close analogue of kernel density analysis but has the advantage of not imposing a smoother over the data. With sufficient data this smoothing is unnecessary as we have an empirical, quantitatively assessed, measure of the degree of use *per cell*. To estimate the degree of representativeness of the sample of seals compared to the actual population of seals at each location, we calculated the cumulative area occupied by increasing numbers of seals (**Supplementary Figure 3**) (Hindell et al., 2003). Finally, we calculated the percent usage contours by sorting the *UDs* values in each cell, taking the cumulative sum, and using that to identify user defined contours. While there are many methods for summarising utilisation distributions there is broad agreement on the use of 50% contours (i.e., enclosing 50% of locations) to define the *core* usage areas and 90% to indicate *overall* usage (Laver and Kelly, 2008).

## Individual Utilisation Distributions Statistics

First, we calculated the area ( $\text{km}^2$ ) of each *UD<sub>i</sub>* by counting the number of  $5 \times 5$  km cells visited by each seal and compared these among the three deployment locations using a GLMM which included deployment duration as a random term to account for animals with longer durations potentially having larger *UD* areas. Seal standard length (m) was included in the model to account for animal size potentially being an important source of individual variation in space use (Hindell et al., 2021). We used length as it was the only morphometric measure common to all studies. We also compared *UD<sub>i</sub>* areas between sexes at DDU, the only site where males were also instrumented, to ascertain if there were differences in habitat use and foraging by sex (Photopoulou et al., 2020).

## The Role of Bathymetry and Sea-Ice Concentration on the Winter Distribution of Individual Seals

We fit GLMMs relating the number of days that an individual spent in a  $5 \times 5$  km cell to the bathymetry and ice concentration in that cell. Ice concentration in a cell varied little over the winter



months, so we took the mean of the ice concentrations over the study period in each cell. While this may lose some fine-scale detail, the Antarctic continental shelf is fully covered by sea-ice by April (Eayrs et al., 2019) and so inconsequential (study lasts March–October). Prior to analysis, outliers (1 and 99% percentiles) for both the response and predictor variables were trimmed from the data set. Predictor variables were also centred and scaled to unit variance to facilitate efficient optimisation of the GLMMs. The distributions of each variable were checked for normality and the response variable (seal days per cell) was subsequently log-transformed. Inter-correlation between the predictor variables were checked with cross-correlation analyses, comparing Pearson Correlation coefficients. The full model GLMMs (with individual seal as a random term) were initially run with and without a spatial autocorrelation term to test its effect on model performance. We found that the spatial autocorrelation term did not affect model performance and so all subsequent analyses were run excluding it. Comparison of log-likelihoods and corrected Akaike Information Criterion (AICc) indicated that the model performed best without spatial autocorrelation, so this was not used in the final model assessment. Overall model fit was assessed with the conditional r-squared which provides the variance explained by the entire model, i.e., both fixed effects and random effects. Finally, we ranked the full suite of 19 models by AICc to identify the best performing model (Burnham and Anderson, 2002, 2004).

## The Role of Bathymetry and Sea-Ice Concentration on the Winter Distribution of the Populations of Weddell Seals

We assessed qualitatively the physical characteristics of the seals' habitats at the population level by contrasting the distribution of bathymetry and sea-ice concentrations within three locations, (i) the core  $UD_s$  (50%) the overall  $UD_s$  (90%) and the regions potentially available to the seals. The  $UD_s$  derived from observed locations only provide information about where animals occur, not about where they could have gone. To estimate potentially available geographic space, we simulated sets of tracks for each observed track using the *availability* R package<sup>1</sup> simulating 10 tracks *per* seal. This yielded simulated tracks with movement characteristics (distributions of step length and turning angle) similar to observed tracks, but tracks were random and independent of environmental effects. These simulated tracks provide an estimate of the geographic space that each animal could have occupied (given its movement characteristics and track length) if it had no habitat preferences (Raymond et al., 2014; Hindell et al., 2020). We compared the ice concentration on July 30 (averaged for all years of the study) as this was the time when ice extent was nearing its maximum, and when most tags were still transmitting.

Analyses were conducted in R 4.0.2 (R Core Team, 2021). *FoieGras* was used to filter the seal tracks (Jonsen et al., 2020). Descriptive statistics presented as mean ( $X$ ) and standard deviation ( $\pm$ s.d) unless indicated. All models were Generalised

Linear Mixed Effects Models in the R package LME4. The models were assessed by ranking candidate models using AICc, and evidence ratios calculated for each model comparison to provide a 2n indication of the importance relative to the top model (Burnham and Anderson, 2004).

## RESULTS

### Overview of Seal Distributions

Tags transmitted for  $150.1 \pm 72$  days (mean  $\pm$  s.d. **Table 1** and **Supplementary Figure 3**) and this did not vary between sites (**Supplementary Table 1a**). Seals from all three *deployment locations* occurred almost exclusively on the Antarctic continental shelf (seafloor  $> -1000$  m) with seals staying within 200 km of the *central point* of their distribution (**Figure 1**). This central point was not where they were tagged, because they were tagged when aggregated to moult. Post-moult, the animals moved to other areas as the sea-ice grew. The seals then remained relatively local with individuals moving on average  $138.2 \pm 117.8$  km from that central point. This differed among the three *deployment locations*; seals tagged in the Ross Sea travelled further than seals in Prydz Bay (mean maximum distance =  $178.0 \pm 147.3$  km compared to Prydz Bay mean max =  $151.0 \pm 89.1$  km) and *Terre Adélie* (mean max =  $70.5 \pm 70.4$  km) (**Table 1**).

### Diving Behaviour

All seals made at least some benthic dives. Nearly 50% of dives were pelagic, 40% benthic and 12% unknown. Seals apportioned dives differently between deployment locations, with 60% benthic dives in Prydz Bay, 42% in *Terre Adélie* and 25% in the Ross Sea (**Table 2**).

Benthic dives were deeper than pelagic dives (**Table 2**). The mean  $\pm$  s.e. depth of a benthic dive was deepest in the Ross Sea ( $216 \pm 40.0$  m), followed by Prydz Bay at  $205 \pm 67.9$  m and *Terre Adélie* at  $122 \pm 36.6$  m (**Table 2**). For pelagic dives, the deepest were in the Ross Sea ( $148 \pm 27.4$  m) followed by Prydz Bay

**TABLE 1** | Summary statistics (mean  $\pm$  s.d.) of tracking data from Weddell seals and three deployment locations during the winter months.

	Deployment Location			
	Prydz Bay ( <i>n</i> = 27)	Terre Adélie ( <i>n</i> = 22)	Ross Sea ( <i>n</i> = 29)	Overall (all sites) ( <i>n</i> = 78)
Mean deployment duration (days)	152 $\pm$ 14.1	142 $\pm$ 13.8	154 $\pm$ 14.4	150.1 $\pm$ 8.2
Maximum duration (days)	267	261	261	267
Mean maximum distance (km)	151.0 $\pm$ 16.6	70.5 $\pm$ 15.0	178.0 $\pm$ 27.4	138.2 $\pm$ 13.3
Maximum distance (km)	354.4	272.6	586.0	586.0

Maximum distance is the maximum distance from the central point of their distribution (see section "Materials and Methods" for full description).

<sup>1</sup><https://github.com/AustralianAntarcticDivision/availability>

(86.9 ± 23.7 m) and the shallowest in *Terre Adélie* (64.9 ± 18.9 m) (Table 2). The proportion of dives classified as unknown varied with Prydz Bay and *Terre Adélie* low (7.2 and 8.5%, respectively), but in the Ross Sea 18.1% were classified as unknown, reflecting the poorer understanding of its bathymetry.

The probability of a seal making a benthic dive decreased with increasing ocean depth (Supplementary Table 1g), but varied among the regions (Figure 2A and Supplementary Table 1g). In Prydz Bay and the Ross Sea, benthic dives were highly likely (probability = 0.75) at ocean depths of around -250 m, while the 0.75 likelihood was approximately -125 m in *Terre Adélie*.

## Utilisation Distributions

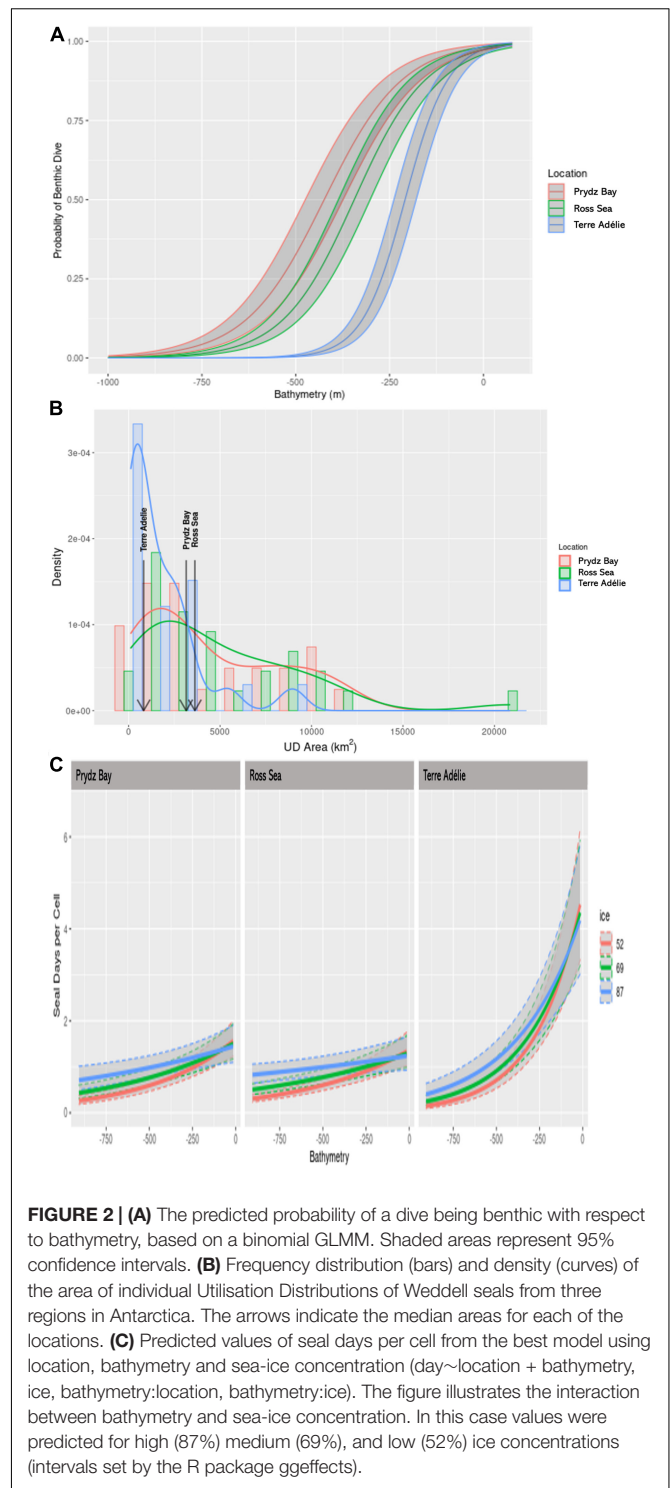
### Individual Utilisation Distributions

Individual Utilisation Distributions ( $UD_i$ s) varied among individuals and locations (Figure 2B), but individual size (seal length) was not influential (Supplementary Table 1e). The median area of the  $UD_i$  for seals in *Terre Adélie* was 825 km<sup>2</sup>, less than 1/3 of the 3150 km<sup>2</sup> in Prydz Bay and 3625 km<sup>2</sup> in the Ross Sea. There were no differences in the size of the  $UD_i$ s for male and female seals in *Terre Adélie* (Supplementary Table 1d). Consequently, we did not discriminate male and female seals in subsequent analyses.

**TABLE 2 |** Benthic Habitat: the role of benthic habitat on Weddell seal distribution and behaviour.

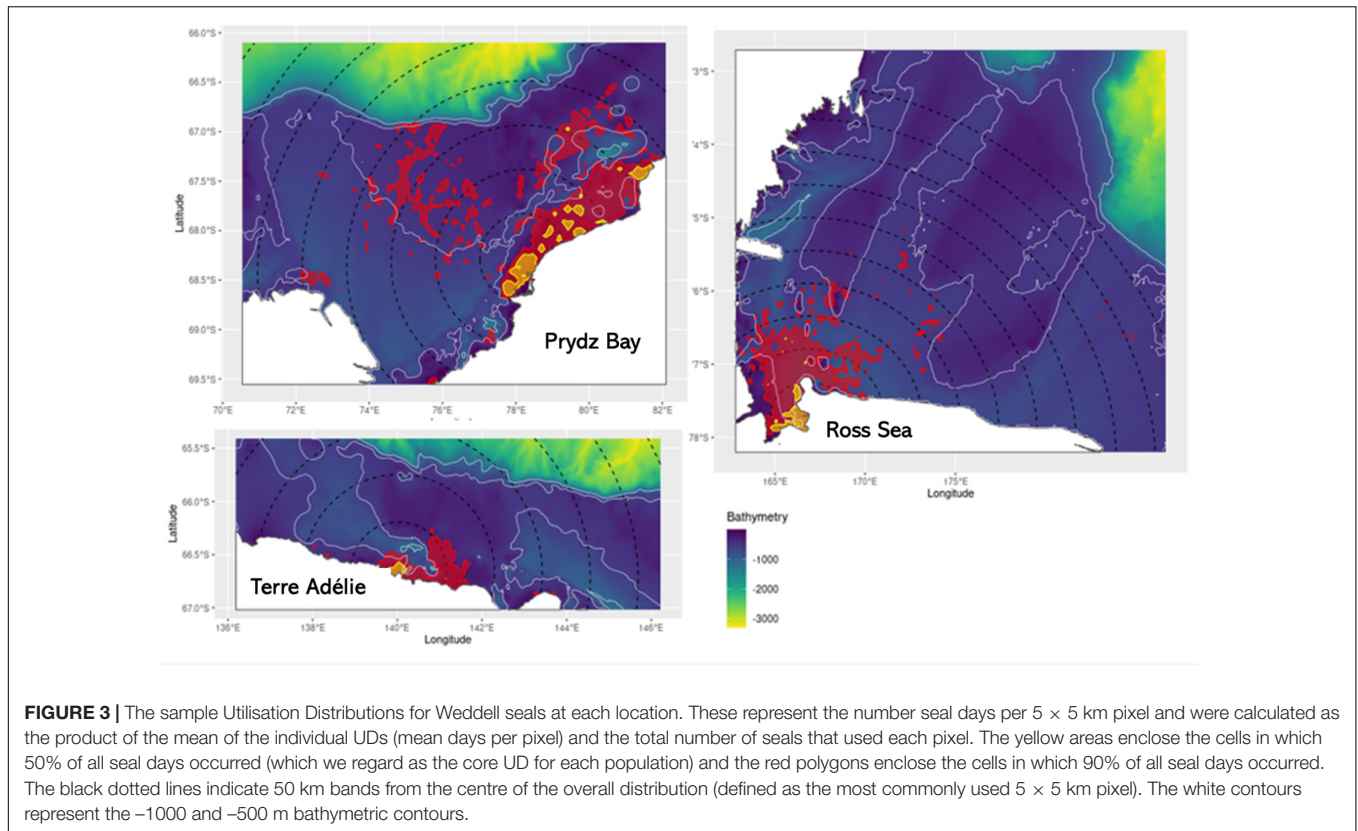
		Deployment Location		
		Prydz Bay	Terre Adélie	Ross Sea
Dive Depths (m)	Mean depth-pelagic ± s.e.	86.9 ± 23.7	64.9 ± 18.9	148 ± 27.4
	Mean depth-benthic ± s.e.	205 ± 67.9	122 ± 35.2	216 ± 40.0
	Mean percentage benthic dives	56.6 ± 14.9	42.1 ± 9.44	25.1 ± 8.7
Percentage time in Benthic Habitat (≥ -250 m)	Mean ± se	51.3 ± 19.3	75 ± 12.7	21.4 ± 10.7
	Maximum	100	99.9	75.9
	Minimum	5.22	18.8	0.596
	<i>n</i>	27	22	29
	Core Utilisation Distribution	Total area of core UD (km <sup>2</sup> )	1600	200
	Area of core UD benthic habitat (km <sup>2</sup> )	1200	175	525
	% of core UD benthic habitat	75	85	36

(a) Dive depths of benthic and pelagic dives. Dive depth data are the fitted values from the GLMMs comparing dive depth (benthic) and dive depth (pelagic) among the three locations. (b) Percentage time that individuals spent in likely benthic habitat (defined as waters less than -250 m) illustrated with; mean, maximum and minimum. (c) Summary of the relative importance of benthic habitat in the core utilisation distribution (50% UD) including; total area of the core UD, total area of benthic habitat within the core, and percentage of the core UD that is benthic habitat.



## The Role of Bathymetry and Sea-Ice Concentration on the Winter Distribution of Individual Seals

The best model relating the number of seal days per 5 × 5 km pixel included location, bathymetry, ice concentration and the interactions of deployment location with bathymetry and



bathymetry with ice concentration, an AICc value of 12538.1 and an AICc weight of 0.996 (Supplementary Table 1f). When considering main effects, bathymetry was best of the single term models with an AICc of 12670.7, followed by ice concentration (12776.0) and then location (12784.3). The null model had an AICc of 12794.9. Intensity of use of a cell was negatively related to bathymetry with the areas of most intensive use in shallowest waters, and this was most pronounced in *Terre Adélie* (Figure 2C). However, when considering the interaction terms, the intensity of use was slightly higher in high ice concentration over deep water (Figure 2C).

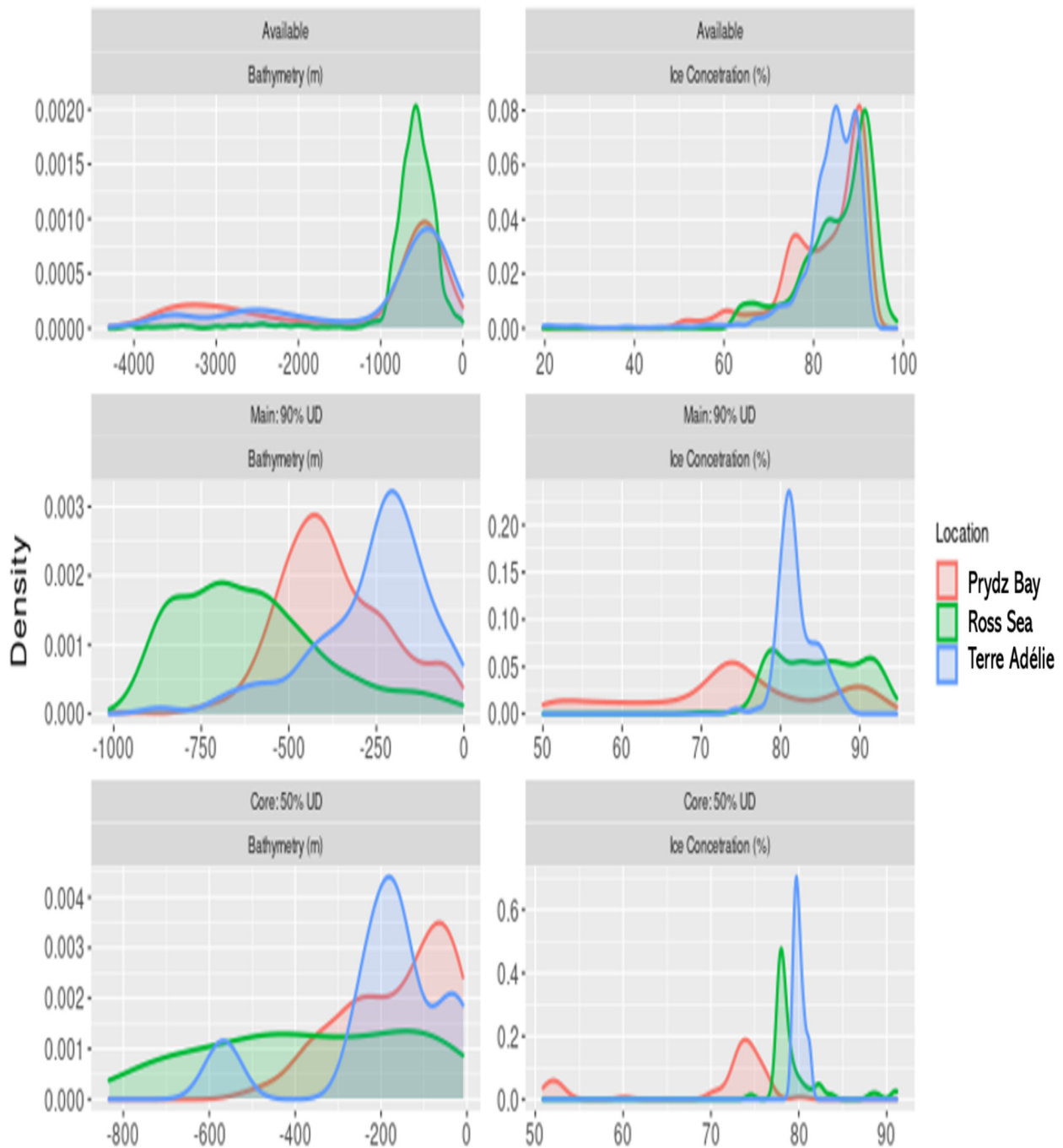
## The Role of Bathymetry and Sea-Ice Concentration on the Winter Distribution of the Populations of Weddell Seals

Our sample sizes, while not large enough to capture the estimated maximum area used by a theoretical population of seals (Supplementary Figure 4), did cover more than 85% of the estimated asymptote. In Prydz Bay, the Gompertz model fitted to the saturation curve had an asymptote of 58335 km<sup>2</sup>, of which our 26 seals occupied (91.8%). In *Terre Adélie* the 22 seals occupied 86.7% of the estimated 21185 km<sup>2</sup>, and in the Ross Sea the 28 seals occupied 91.0% of the estimated 66724 km<sup>2</sup>.

The core (50%) population UD<sub>s</sub> were in shallow waters within 200 km of the central pixel (Figure 3) at all locations. In Prydz Bay, the core UD<sub>s</sub> extended northward along the coast, largely contained within the  $-500$  m bathymetric contour. The seals in

*Terre Adélie* had the smallest core UD<sub>s</sub> mostly within 50 km of the central point and also within the  $-500$  m bathymetric contour. The core UD<sub>s</sub> for seals in the Ross Sea was concentrated on the western edge of McMurdo Sound extending 50 km north of Ross Island. In Prydz Bay the core 50% UD<sub>s</sub> with an area of 1700 km<sup>2</sup> occupied 12.6% of the overall 90% UD<sub>s</sub> of the sample of seals at that site. In *Terre Adélie* the core UD (200 km<sup>2</sup>) occupied 10% of the overall 90% UD<sub>s</sub>, and in the Ross Sea (core = 1650 km<sup>2</sup>) 11.1% of the 90% UD<sub>s</sub>.

The bathymetry available to the seals differed from those in the overall and core UD<sub>s</sub>, indicating a strong preference for shelf waters, with randomised tracks venturing off continental shelf break, with mean values deeper than  $-1000$  m for seals from Prydz Bay and *Terre Adélie* (Figure 4 and Supplementary Table 2). Seals from the Ross Sea showed a different pattern, with available habitat almost exclusively contained to shelf. The bathymetry within the core UD<sub>s</sub> also differed from the overall (90%) UD<sub>s</sub> (Figure 4 and Supplementary Table 2). At all three locations, the core areas were in considerably shallower water than the overall area (Supplementary Table 2), reflecting the coastal positions of the core UD<sub>s</sub>. In the Ross Sea overall UD<sub>s</sub> had the deepest bathymetry (mean =  $-608 \pm 147$  m) followed by Prydz Bay ( $-370 \pm 112$  m) and then *Terre Adélie* ( $-262 \pm 118$  m) reflecting the topographic characteristics of the locations. Ice characteristics varied between available, core and overall areas (Figure 4 and Supplementary Table 2). Ice concentrations were consistently higher within regions available to the seals (Figure 4) compared to regions they actually used. Further, ice



**FIGURE 4 |** Frequency distributions (expressed as densities) of the bathymetry (m) and ice concentrations (%) on July 30 comparing (i) the region potentially available to the seals (see Methods), (ii) the full sample Utilisation Distributions ( $UD_s$ ) and (iii) the core  $UD_s$ .

concentration was slightly lower in core  $UD_s$  than overall  $UD_s$ , although the differences were relatively minor, being largest in the Ross Sea ( $85.0 \pm 3.7$  [90%] compared to  $79.4 \pm 2.2$  [50%]).

The area of shallow water where benthic foraging was most likely [i.e.,  $\geq -250$  m (**Figure 2A**)] constituted 85% of the core UD in Terre Adélie, 85% in Prydz Bay and only 36% in the Ross Sea (**Table 2**).

## DISCUSSION

By comparing data from three different regions, we found that Weddell seal foraging behaviour during the winter months is strongly influenced by extrinsic factors, but individual variability still plays a key role. Of the extrinsic factors, bathymetry played the most important role in determining the distribution and



foraging behaviour of Weddell seals. The seals made on average more pelagic dives than benthic dives, and benthic foraging behaviour was more likely in shallower waters less than  $-250$  m. Off *Terre Adélie* and in Prydz Bay individual seals spent 60% of their time in waters less than  $-250$  m, making predominantly benthic dives. By contrast, seals in the Ross Sea spent less time in benthic habitats, and we attribute this to the relatively small area of benthic habitat within their core area dominated by the deep McMurdo Sound. However, individual variation in foraging behaviour persisted at each site, reflecting differences in intrinsic factors. Some individuals remained very local, foraging predominantly on the benthos throughout the winter, while others moved further afield, foraging more pelagically.

A potential limitation in this study is that bathymetry is poorly known in remote regions like the Southern Ocean (Millan et al., 2020). The Weddell seal dive data reflects this inaccuracy with 24% of the dives recorded being deeper than the ocean floor provided by GEBCO19. To account for this potential source of error, we designated foraging behaviours conservatively. Many studies have reported that seal dive depths recorded by SRDLs and CTD-SRDLs are accurate (Boehme et al., 2009; Costa et al., 2010; Padman et al., 2010; Roquet et al., 2014) and the locations of diving seals have at least a relatively well-derived error component (Jonsen et al., 2020). Given the paucity of direct ship-borne measurement for many of these areas of the Southern Ocean, integrating seal dive depths with those collected by more traditional means may help to constrain and therefore improve the confidence of many bathymetry models (Padman et al., 2010).

## Foraging Behaviour

Weddell seal foraging occurs in a mix of habitat types (benthic, epipelagic, and mesopelagic) and they have a catholic diet taking benthic fish, crustaceans and cephalopods as well as mesopelagic prey such as *Pleurogramma* spp. (Supplementary Table 3). The likelihood of benthic foraging increased in shallower water. To reach the benthos in these areas, seals traverse the entire water column rather than stopping to feed in the pelagic zone, either because the mesopelagic prey are not there or because the seals get a greater energetic return from benthic prey. Harcourt et al. (2007) found that males that dived deeply during the breeding season in McMurdo Sound lost weight at a slower rate than those remaining shallow. This suggests that deeper prey resources are especially profitable or at least predictable (Photopoulou et al., 2020). Making diet inference based simply on predator dive behaviour is potentially confounded by the knowledge that some key prey species such as silverfish and toothfish can occupy multiple habitats (O'Driscoll et al., 2011). Feeding studies and acoustic observations of silverfish are consistent with a predominantly pelagic niche (Pinkerton, 2017; O'Driscoll et al., 2018), but adult silverfish are sometimes found close to the bottom over the Ross Sea shelf (O'Driscoll et al., 2011). In contrast, toothfish over the Ross Sea shelf are likely to be predominantly demersal (Pinkerton et al., 2016), but pelagically feeding in McMurdo Sound (Ainley et al., 2013).

As seals venture into deeper water, the benefits of benthic foraging are likely to decline due to the energetic trade-offs. These

are associated with deeper diving, such as reduced time available in the foraging zone, greater cost of transport to and from deeper depths (Thompson and Fedak, 2001; Williams et al., 2004), physiologic costs associated with exceeding the aerobic dive limit or even potentially cardiac anomalies (Williams et al., 2015). This may explain why the seals in all three regions used predominantly shallower habitats in accordance with their relative availability.

## Regional Variation in Habitat Use Is Explained by Site Variability Not Inherent Population Level Behavioural Differences

Across the three sites dive behaviour differed due to regional differences in bathymetry. For example, off *Terre Adélie* there was more shallow benthic diving than in Prydz Bay or the Ross Sea. In the Ross Sea Weddell seals foraged more pelagically, presumably because water is deeper in McMurdo Sound. Overall, the seals in all three regions remained close to the continental land mass in areas of heavy ice concentration (75–85% in core areas) over relatively shallow waters ( $<200$  m). This corroborates previous observations of Weddell seal distributions and their preference for relatively shallow water areas (Stirling, 1969) in areas of dense ice (Lake et al., 2005; Boehme et al., 2016; Heerah et al., 2016; Nachtsheim et al., 2019). We observed differences between sites in the areas used by the seals, most likely due to the differences in physical habitats. Prydz Bay and *Terre Adélie* seals were close to regions where productive circumpolar deep water may reduce their need to forage further afield. In the Ross Sea, the seals were further from areas of influx of circumpolar deep water, with bathymetry influencing the advection of circumpolar deep water (Williams et al., 2016).

A recent study in the Weddell Sea observed differences in diving behaviour between males and females (Photopoulou et al., 2020), but we did not, which is possibly due to the similar body size of the males and females we studied. Photopoulou et al. (2020) reported that male Weddell seals spent more time in high-salinity shelf water masses at depth, benthically diving, while females ventured off the continental shelf and visited warmer, shallower water masses while undertaking a mix of benthic and pelagic dives. Our sample did not include sub-adults or juveniles, age classes which have very different distributions in other Southern Ocean pinnipeds (e.g., elephant seals, Hindell et al., 2021). Burns et al. (1999) reported that some weaned Weddell seal pups from McMurdo Sound in the southern Ross Sea dispersed widely, others did not, but all stayed relatively close to the Antarctic coastline.

## Individual Variability

In this study there was a high degree of inter-individual variation in winter foraging behaviour. Some individuals were notably sedentary, did not move far from tagging location and had small home ranges. Others had large home ranges, travelled several hundred kilometres, and made more pelagic dives. These differences may be due to divergent behavioural traits among individual seals (Toscano et al., 2016; Troxell-Smith and Mella, 2017). Individual behavioural traits under-pins differences in foraging behaviour in other species (Patrick et al., 2014; Toscano et al., 2016; Krüger et al., 2019; DiNuzzo and Griffen, 2020;

Steinhoff et al., 2020), and distinct, stable foraging strategies have been identified in many pinnipeds [e.g., Australian sea lions, *Neophoca cinerea* (Lowther et al., 2011); Galapagos sea lions, *Zalophus wollebaeki* (Villegas-Amtmann et al., 2008)], consistent with individual traits (Schwarz et al., 2021). In dynamic environments, multiple foraging strategies within a population may reduce resource competition (Lewis et al., 2006; Baylis et al., 2015). We found no relationship between home range area and seal size. In northern elephant seals, *Mirounga angustirostris*, body condition influences foraging behaviour, with animals in poor condition adopting riskier foraging strategies (Beltran et al., 2021) but, post-tagging we have no information on individual condition on our animals. Development of *in situ* proxies of condition (e.g., buoyancy) in Weddell seals similar to those well established in elephant seals (Biuw et al., 2003) could help to resolve whether these differences result from intrinsic strategies or arise from variance in foraging success. Finally, pre- and post-tagging reproductive status may both be important. The majority of these animals were females and at the time of tagging some would have just weaned their pup from the preceding breeding season, while others were not reproductive that season. Animals that skip breeding have different energetic demands as they have avoided the high cost incurred by birthing and lactation, where females lose about 30% of their body mass (Wheatley et al., 2006; Shero et al., 2015). Females that skipped breeding are in much better condition and so may have the luxury of adopting a safer foraging strategy as with fat northern elephant seals (Beltran et al., 2021). Conversely, not all females are pregnant each year. Pregnancy incurs increased energetic demands which translates to increased winter foraging effort (Shero et al., 2018), and this may well influence space use.

Our results differ from studies of Weddell seal distributions in the Weddell Sea (Boehme et al., 2016; Nachtsheim et al., 2019; Photopoulou et al., 2020; Labrousse et al., 2021), where tracked individuals showed diverse and wide-ranging movements including moving off the Antarctic continental shelf. In those studies, seals were often captured from ships some distance from the coast and later in the winter. In our study, all seals were captured just after their annual moult (~2–3 months after the breeding season) at or near their breeding sites on coastal fast ice. We hypothesise that the seals tagged offshore in the Weddell Sea may contain a higher proportion of those individuals that are predisposed to make longer excursions, and so represent a different sample from those tagged near their breeding areas. Supportive evidence arises from Nachtsheim et al. (2019) who were forced to tag four of their six animals in a sheltered inlet due to bad weather. They found that the four Weddell seals they tagged on the fast ice stayed close to their colony, while the two tagged on the pack ice ventured further afield.

Bathymetry and ice concentration were important determinants of Weddell seal distribution. Sea-ice concentration on the continental shelf in east Antarctica is dynamic both within and among years (Massom et al., 2013), but in most years ice concentration reaches a maximum in late winter, around August (Eayrs et al., 2019), while still exhibiting considerable spatial variation due to recurrent coastal polynyas (Arrigo et al., 2015). These seals did not concentrate in polynyas, but instead

those individuals that made excursions beyond the core areas moved into areas of relatively high ice concentrations (80% plus). Inhabiting high sea-ice concentration areas may improve access to prey or reduce the risk of attack by predators such as killer whales (Lauriano et al., 2020). Similarly, sedentary individuals remaining in the fast ice may reduce predation risk.

## Implications

Antarctica and the surrounding Southern Ocean, like many regions across the globe, are changing in response to changes in climate (Rogers et al., 2020) and anthropogenic activities such as increased exploitation (e.g., fisheries), and these can profoundly affect endemic biota (Bestley et al., 2020). To quantify how these broad scale changes affect individuals and animal populations requires information on animal distribution and behaviour, and the structure and dynamics of the physical environment (Hindell et al., 2020). Quantifying movement and habitat use by predators for conservation and management strategies is particularly pertinent given the recent designation of the Ross Sea region Marine Protected Area (MPA), and the ongoing debate for new MPAs in east Antarctica and elsewhere in the Southern Ocean (Hays et al., 2019; Hindell et al., 2020). It is especially important in the management context to develop policies that protect the endemic biota over the long-term while regulating the human behaviours like fishing within the broader framework of a changing climate, over which it is much harder to effect change (Hays et al., 2019; Hindell et al., 2020). In the Southern Ocean, animal conservation and fisheries regulation is generally managed by the Commission for the Conservation of Antarctic Marine Living Resources (CCAMLR) under an ecosystem-based management approach which includes establishing a network of MPAs in the Southern Ocean. Information on where, when and how animals use their habitats is critical for the design and evaluation of these MPAs.

## CONCLUSION

We found that Weddell seals in the Eastern Antarctic are relatively sedentary, preferring to forage in shallow water on the continental shelf. We detected regional differences in the proportion of benthic and foraging dives that accord with the available habitat. Within populations, we identified significant individual variability, ranging from little dispersal, and foraging within a relatively small core area, to individuals that ventured further afield, diving pelagically when in deeper waters but keeping to areas of high ice concentration. All the animals tagged in the Ross Sea remained within the boundaries of the Ross Sea MPA. The proposed MPAs in East Antarctica, Weddell Sea and Western Antarctic Peninsula also encompass potential core Weddell seal habitat (LaRue et al., 2019; Teschke et al., 2020). However, none of the areas used by seals in Prydz Bay are inside any current or proposed MPAs and this is obviously an important region to consider. This study suggests that protecting shelf areas will protect Weddell seals within that prescribed area, but local populations outside MPAs will only indirectly benefit.

## DATA AVAILABILITY STATEMENT

The datasets presented in this study can be found in online repositories. The names of the repository/repositories and accession number(s) can be found below: <https://portal.aodn.org.au/>.

## ETHICS STATEMENT

The animal study was reviewed and approved by Macquarie University ARA 2014\_057.

## AUTHOR CONTRIBUTIONS

RH, MH, and CM lead the writing. MH, CM, and IJ conducted the analysis. RH, CM, MH, KG, J-BC, and MP organised the funding. RH, MH, CM, KG, KH, RHo, XH, MS, RF, BL, and ET conducted field work. All contributed writing and final edits.

## FUNDING

Field support was provided in the Ross Sea by Malcolm O'Toole, Rupert Woods, and Antarctica New Zealand and in Prydz Bay by Malcolm O'Toole, Andrew Doube, Iain Field, and the Australian Antarctic Division. The tagging study in Terre Adélie had logistical support from IPEV (Institut Paul Emile Victor) and the French Polar Institute. New Zealand funding was provided by the Ministry for Business, Innovation and Employment Endeavour

## REFERENCES

- Ainley, D. G., Nur, N., Eastman, J. T., Ballard, G., Parkinson, C. L., Evans, C. W., et al. (2013). Decadal trends in abundance, size and condition of Antarctic toothfish in McMurdo Sound, Antarctica, 1972–2011. *Fish. Fish.* 14, 343–363. doi: 10.1111/j.1467-2979.2012.00474.x
- Arrigo, K. R., and van Dijken, G. L. (2003). Phytoplankton dynamics within 37 Antarctic coastal polynya systems. *J. Geophys. Res.* 108. doi: 10.1029/2002JC001739
- Arrigo, K. R., van Dijken, G. L., and Strong, A. L. (2015). Environmental controls of marine productivity hot spots around Antarctica. *J. Geophys. Res.* 120, 5545–5565. doi: 10.1002/2015JC010888
- Baylis, A. M., Orben, R. A., Arnould, J. P., Peters, K., Knox, T., Costa, D. P., et al. (2015). Diving deeper into individual foraging specializations of a large marine predator, the southern sea lion. *Oecologia* 179, 1053–1065. doi: 10.1007/s00442-015-3421-4
- Beltran, R. S., Kendall-Bar, J. M., Pirotta, E., Adachi, T., Naito, Y., Takahashi, A., et al. (2021). Lightscares of fear: How mesopredators balance starvation and predation in the open ocean. *Sci. Adv.* 2021:7. doi: 10.1126/sciadv.abd9818
- Bestley, S., Ropert-Coudert, Y., Bengtson Nash, S., Brooks, C. M., Cotté, C., Dewar, M., et al. (2020). Marine Ecosystem Assessment for the Southern Ocean: Birds and Marine Mammals in a Changing Climate. *Front. Ecol. Evol.* 8:566936. doi: 10.3389/fevo.2020.566936
- Biuw, M., McConnell, B. J., Bradshaw, C. J. A., Burton, H. R., and Fedak, M. A. (2003). Blubber and buoyancy: monitoring the body condition of free-ranging seals using simple dive characteristics. *J. Exp. Biol.* 206, 3405–3423. doi: 10.1242/jeb.00583
- Boehme, L., Baker, A., Fedak, M., Arthun, M., Nicholls, K., Robinson, P., et al. (2016). Bimodal winter haul-out patterns of adult Weddell seals (*Leptonychotes*

*Fund C01 × 1710*: “RAMPing-up protection of the Ross Sea”. The 2014 field event was funded by NZARI (NZ Antarctic Research Institute) and Fisheries New Zealand (respectively), with Regina Eisert as CI, and tags and some field personnel funded by IMOS. The IMOS deployments in Prydz Bay were supported logistically by the Australian Antarctic Division through the Australian Antarctic Science Grant Scheme (AAS Projects 2794 & 4329). The tagging study in Terre Adélie was supported by the Program Terre-Océan-Surface Continentale-Atmosphère from Centre National d'Etudes Spatiales (TOSCA-CNES). The ARGOS seal tracking and dive data were sourced and are available from the Integrated Marine Observing System (IMOS), NIWA, and LOCEAN. IMOS is a national collaborative research infrastructure, supported by the Australian Government. It is operated by a consortium of institutions as an unincorporated joint venture, with the University of Tasmania as lead agent.

## ACKNOWLEDGMENTS

We thank all expeditioners at Dumont d'Urville who provided field assistance over the years. Bathymetry was from the GEBCO Compilation Group (GEBCO) (2021) GEBCO 2020 Grid (doi: 10.5285/a29c5465-b138-234d-e053-6c86abc040b9).

## SUPPLEMENTARY MATERIAL

The Supplementary Material for this article can be found online at: <https://www.frontiersin.org/articles/10.3389/fmars.2021.720335/full#supplementary-material>

- weddellii*) in the Southern Weddell Sea. *Plos One* 2016, 11. doi: 10.1371/journal.pone.0155817
- Boehme, L., Lovell, P., Biuw, M., Roquet, F., Nicholson, J., Thorpe, S. E., et al. (2009). Animal-borne CTD-Satellite Relay Data Loggers for real-time oceanographic data collection. *Ocean Sci.* 5, 685–695. doi: 10.5194/os-5-685-2009
- Brierley, A. S., and Thomas, D. N. (2002). Ecology of Southern Ocean pack ice. *Adv. Mar. Biol.* 43, 171–276. doi: 10.1016/S0065-2881(02)43005-2
- Burnham, K. P., and Anderson, D. R. (2002). *Model selection and multimodal inference: a practical information-theoretic approach*. New York, USA: Springer-Verlag.
- Burnham, K. P., and Anderson, D. R. (2004). Multimodel inference - understanding AIC and BIC in model selection. *Sociolog. Methods Res.* 33, 261–304. doi: 10.1177/0049124104268644
- Burns, J. M., Castellini, M. A., and Testa, J. W. (1999). Movements and diving behaviour of weaned Weddell seal (*Leptonychotes weddellii*) pups. *Polar Biol.* 21, 23–36. doi: 10.1007/s003000050329
- Burns, J. M., and Kooyman, G. L. (2001). Habitat Use by Weddell Seals and Emperor Penguins Foraging in the Ross Sea, Antarctica. *Am. Zool.* 41, 90–98. doi: 10.1668/0003-1569(2001)041[0090:HUBWSA]2.0.CO;2
- Castellini, M. A., Davis, R. W., Davis, M., and Horning, M. (1984). Antarctic marine life under the McMurdo Ice Shelf at White Island: A link between nutrient influx and seal population. *Polar Biol.* 2, 229–231. doi: 10.1007/BF00263629
- Catry, T., Ramos, J. A., Jaquemet, S., Faulquier, L., Berlincourt, M., Hauselmann, A., et al. (2009). Comparative foraging ecology of a tropical seabird community of the Seychelles, western Indian Ocean. *Mar. Ecol. Prog. Ser.* 374, 259–272. doi: 10.3354/meps07713



- Cavalieri, D. J., Parkinson, C. L., Gloersen, P., Comiso, J. C., and Zwally, H. J. (1999). Deriving long-term time series of sea ice cover from satellite passive-microwave multisensor data sets. *J. Geophys. Res. Oceans* 104, 15803–15814. doi: 10.1029/1999JC900081
- Cherel, Y., and Hobson, K. A. (2007). Geographical variation in carbon stable isotope signatures of marine predators: a tool to investigate their foraging areas in the Southern Ocean. *Mar. Ecol. Prog. Series* 329, 281–287. doi: 10.3354/meps329281
- Constable, A. J., Nicol, S., and Strutton, P. G. (2003). Southern Ocean productivity in relation to spatial and temporal variation in the physical environment. *J. Geophys. Res.* 108:8079. doi: 10.1029/2001JC001270
- Costa, D. P., Huckstadt, L. A., Crocker, D. E., McDonald, B. I., Goebel, M. E., and Fedak, M. A. (2010). Approaches to Studying Climatic Change and its Role on the Habitat Selection of Antarctic Pinnipeds. *Integr. Compar. Biol.* 50, 1018–1030. doi: 10.1093/icb/icq054
- Daunt, F., Afanasyev, V., Silk, J. R. D., and Wanless, S. (2005). Extrinsic and intrinsic determinants of winter foraging and breeding phenology in a temperate seabird. *Behav. Ecol. Sociobiol.* 59, 381–388. doi: 10.1007/s00265-005-0061-4
- DiNuzzo, E. R., and Griffen, B. D. (2020). The effects of animal personality on the ideal free distribution. *Proc. Biol. Sci.* 287:20201095. doi: 10.1098/rspb.2020.1095
- Eyras, C., Holland, D., Francis, D., Wagner, T., Kumar, R., and Li, X. (2019). Understanding the Seasonal Cycle of Antarctic Sea Ice Extent in the Context of Longer-Term Variability. *Rev. Geophys.* 57, 1037–1064. doi: 10.1029/2018RG000631
- GEBCO Compilation Group (GEBCO) (2021). *GEBCO 2020 Grid*. Berlin: GEBCO. doi: 10.5285/a29c5465-b138-234d-e053-6c86abc040b9
- Harcourt, R., Sequeira, A. M. M., Zhang, X., Roquet, F., Komatsu, K., Heupel, M., et al. (2019). Animal-Borne Telemetry: an integral component of the ocean observing toolkit. *Front. Mar. Sci.* 6:326. doi: 10.3389/fmars.2019.00326
- Harcourt, R. G., Kingston, J. J., Waas, J. R., and Hindell, M. A. (2007). Foraging while breeding: alternative mating strategies by male Weddell seals? *Aquat. Conserv. Mar. Freshw. Ecosyst.* 17, S68–S78. doi: 10.1002/aqc.915
- Hays, G. C., Bailey, H., Steven, J., Bograd, S. J., Don, W., Bowen, W. D., et al. (2019). Translating marine animal tracking data into conservation policy and management. *Trends Ecol. Evol.* 34, 459–473. doi: 10.1016/j.tree.2019.01.009
- Heerah, K., Andrews-Goff, V., Williams, G., Sultan, E., Hindell, M., Patterson, T., et al. (2013). Ecology of Weddell seals during winter: Influence of environmental parameters on their foraging behaviour. *Deep-Sea Res. Part I-Top. Stud. Oceanogr.* 88–89, 23–33. doi: 10.1016/j.dsr2.2012.08.025
- Heerah, K., Hindell, M. A., Andrews-Goff, V., Field, I. C., McMahon, C. R., and Charrassin, J. B. (2016). Contrasting behaviour between two populations of an ice-obligate predator in East Antarctica. *Ecol. Evol.* 2016:2652. doi: 10.1002/ece1003.2652
- Hindell, M. A., Bradshaw, C. J. A., Sumner, M. D., Michael, K. J., and Burton, H. R. (2003). Dispersal of female southern elephant seals and their prey consumption during the austral summer: relevance to management and oceanographic zones. *J. Appl. Ecol.* 40, 703–715. doi: 10.1046/j.1365-2664.2003.00832.x
- Hindell, M. A., McMahon, C. R., Bester, M. N., Boehme, L., Costa, D., Fedak, M. A., et al. (2016). Circumpolar habitat use in the southern elephant seal: implications for foraging success and population trajectories. *Ecosphere* 7:e01213. doi: 10.1002/ecs2.1213
- Hindell, M. A., McMahon, C. R., Harcourt, R., Arce, F., Guinet, C., and Jonsen, I. (2021). Inter- and intra-sex habitat partitioning in the highly dimorphic southern elephant seal. *Ecol. Evol.* 2021:7147. doi: 10.1002/ece1003.7147
- Hindell, M. A., Reisinger, R. R., Ropert-Coudert, Y., Hückstädt, L. A., Trathan, P. N., Bornemann, H., et al. (2020). Tracking of marine predators to protect Southern Ocean ecosystems. *Nature* 580, 87–92.
- Humphreys, E. M., Wanless, S., and Bryant, D. M. (2006). Stage-dependent foraging in breeding black-legged kittiwakes *Rissa tridactyla*: distinguishing behavioural responses to intrinsic and extrinsic factors. *J. Avian Biol.* 37, 436–446. doi: 10.1111/j.2006.0908-8857.03594.x
- Jonsen, I., Patterson, T. A., Doherty, P. D., Godley, B. J., Grecian, W. J., Guinet, C., et al. (2020). A continuous-time state-space model for rapid quality-control of Argos locations from animal-borne tags. *Move. Ecol.* 8:31. doi: 10.1186/s40462-020-00217-7
- Kirkwood, R., and Robertson, G. (1997). The foraging ecology of female emperor penguins in winter. *Ecol. Monogr.* 67, 155–176. doi: 10.1890/0012-9615(1997)067[0155:TFOE]2.0.CO;2
- Kooyman, G. L., Castellini, M. A., and Davis, R. W. (1981). Physiology of diving in marine mammals. *Ann. Rev. Physiol.* 43, 343–356. doi: 10.1146/annurev.ph.43.030181.002015
- Koubbi, P., Ozouf-Costaz, C., Goarant, A., Moteki, M., Hulley, P.-A., Causse, R., et al. (2010). Estimating the biodiversity of the East Antarctic shelf and oceanic zone for ecoregionalisation: Example of the ichthyofauna of the CEAMARC (Collaborative East Antarctic Marine Census) CAML surveys. *Polar Sci.* 4, 115–133.
- Krüger, L., Pereira, J. M., Paiva, V. H., and Ramos, J. A. (2019). Personality influences foraging of a seabird under contrasting environmental conditions. *J. Exp. Mar. Biol. Ecol.* 516, 123–131. doi: 10.1016/j.jembe.2019.04.003
- Kuhn, C. E., Baker, J. D., Towell, R. G., and Ream, R. R. (2014). Evidence of localized resource depletion following a natural colonization event by a large marine predator. *J. Anim. Ecol.* 83, 1169–1177. doi: 10.1111/1365-2656.12202
- Labrousse, S., Ryan, S., Roquet, F., Picard, B., McMahon, C. R., Harcourt, R., et al. (2021). Weddell seal behaviour during an exceptional oceanographic event in the Filchner-Ronne Ice Shelf in 2017. *Antar. Sci.* 2021, 1–13. doi: 10.1017/S0954102021000092
- Lake, S., Wotherspoon, S., and Burton, H. R. (2005). Spatial utilisation of fast-ice by Weddell seals *Leptonychotes weddellii* during winter. *Ecography* 28, 295–306. doi: 10.1111/j.0906-7590.2005.03949.x
- LaRue, M. A., Salas, L., Nur, N., Ainley, D. G., Stammerjohn, S., Barrington, L., et al. (2019). Physical and ecological factors explain the distribution of Ross Sea Weddell seals during the breeding season. *Mar. Ecol. Prog. Series* 612, 193–208. doi: 10.3354/meps12877
- Lauriano, G., Pirota, E., Joyce, T., Pitman, R. L., Borrell, A., and Panigada, S. (2020). Movements, diving behaviour and diet of type-C killer whales (*Orcinus orca*) in the Ross Sea, Antarctica. *Aquat. Conserv.* 30, 2428–2440. doi: 10.1002/aqc.3371
- Laver, P. N., and Kelly, M. J. (2008). A Critical Review of Home Range Studies. *J. Wildlife Manag.* 72, 290–298. doi: 10.2193/2005-589
- Lewis, R., O'Connell, T. C., Lewis, M., Carnapagna, C., and Hoelzel, A. R. (2006). Sex-specific foraging strategies and resource partitioning in the southern elephant seal (*Mirounga leonina*). *Proc. R. Soc. B-Biol. Sci.* 273, 2901–2907. doi: 10.1098/rspb.2006.3642
- Lowther, A. D., Harcourt, R. G., Hamer, D. J., and Goldsworthy, S. D. (2011). Creatures of habit: foraging habitat fidelity of adult female Australian sea lions. *Mar. Ecol. Prog. Series* 443:249. doi: 10.3354/meps09392
- Massom, R., Reid, P., Stammerjohn, S., Raymond, B., Fraser, A., and Ushio, S. (2013). Change and Variability in East Antarctic Sea Ice Seasonality, 1979/80–2009/10. *PLoS One* 2013:8. doi: 10.1371/journal.pone.0064756
- McNamara, J. M., and Houston, A. I. (1986). The Common Currency for Behavioral Decisions. *Am. Natural.* 127, 358–378. doi: 10.1086/284489
- Mellish, J. A., Tuomi, P. A., Hindle, A. G., and Horning, M. (2010). Chemical immobilization of Weddell seals (*Leptonychotes weddellii*) by ketamine/midazolam combination. *Vet. Anaesth. Anal.* 37, 123–131. doi: 10.1111/j.1467-2995.2009.00517.x
- Millan, R., St-Laurent, P., Rignot, E., Morlighem, M., Mouginot, J., and Scheuchl, B. (2020). Constraining an Ocean Model Under Getz Ice Shelf, Antarctica, Using A Gravity-Derived Bathymetry. *Geophysical Research Letters* 2020, 47. doi: 10.1029/2019GL086522
- Nachtsheim, D. A., Ryan, S., Schröder, M., Jensen, L., Oosthuizen, W. C., Bester, M. N., et al. (2019). Foraging behaviour of Weddell seals (*Leptonychotes weddellii*) in connection to oceanographic conditions in the southern Weddell Sea. *Prog. Oceanogr.* 173, 165–179. doi: 10.1016/j.pocean.2019.02.013
- Nicol, S., Pauly, T., Bindoff, N. L., Wright, S., Thiel, D., Hosie, G. W., et al. (2000). Ocean circulation off east Antarctica affects ecosystems structure and sea-ice extent. *Nature* 406, 504–507. doi: 10.1038/35020053
- Nordstrom, C. A., Battaile, B. C., Cotte, C., and Trites, A. W. (2013). Foraging habitats of lactating northern fur seals are structured by thermocline depths and submesoscale fronts in the eastern Bering Sea. *Deep-Sea Res. Part I-Top. Stud. Oceanogr.* 88–89, 78–96. doi: 10.1016/j.dsr2.2012.07.010
- Nunes Vaz, R. A., and Lennon, G. W. (1996). Physical oceanography of the Prydz Bay region of Antarctic waters. *Deep Sea Res. Part I: Oceanogr. Res. Papers* 43, 603–641. doi: 10.1016/0967-0637(96)00028-3



- O'Driscoll, R. L., Canese, S., Ladroit, Y., Parker, S. J., Ghigliotti, L., Mormede, S., et al. (2018). First *in situ* estimates of acoustic target strength of Antarctic toothfish (*Dissostichus mawsoni*). *Fish. Res.* 206, 79–84. doi: 10.1016/j.fishres.2018.05.008
- O'Driscoll, R. L., Macaulay, G. J., Gauthier, S., Pinkerton, M., and Hanchet, S. (2011). Distribution, abundance and acoustic properties of Antarctic silverfish (*Pleuragramma antarcticum*) in the Ross Sea. *Deep Sea Res. Part II: Top. Stud. Oceanogr.* 58, 181–195. doi: 10.1016/j.dsr2.2010.05.018
- Padman, L., Costa, D. P., Bolmer, S. T., Goebel, M. E., Huckstadt, L. A., Jenkins, A., et al. (2010). Seals map bathymetry of the Antarctic continental shelf. *Geophys. Res. Lett.* 37:L21601. doi: 10.1029/2010GL044921
- Patrick, S. C., Bearhop, S., Grémillet, D., Lescroël, A., Grecian, W. J., Bodey, T. W., et al. (2014). Individual differences in searching behaviour and spatial foraging consistency in a central place marine predator. *Oikos* 123, 33–40. doi: 10.1111/j.1600-0706.2013.00406.x
- Photopoulou, T., Heerah, K., Pohle, J., and Boehme, L. (2020). Sex-specific variation in the use of vertical habitat by a resident Antarctic top predator. *Proc. R. Soc. B.* 287:20201447. doi: 10.1098/rspb.2020.1447
- Pinkerton, M. H. (2017). Diet and trophic ecology of adult Antarctic silverfish (*Pleuragramma antarctica*) Antarctic silverfish. *Adv. Polar Ecol. Series* 2017, 93–111. doi: 10.1007/978-3-319-55893-6\_5
- Pinkerton, M. H., Lyver, P. O. B., Stevens, D. W., Forman, J., Eisert, R., and Mormede, S. (2016). Increases in Adélie penguins in the Ross Sea: Could the fishery for Antarctic toothfish be responsible? *Ecol. Model.* 337, 262–271. doi: 10.1016/j.ecolmodel.2016.07.007
- R Core Team (2021). *R: A Language and Environment for Statistical Computing*. Vienna: R Foundation for Statistical Computing. Available online at: <https://www.R-project.org/>
- Raymond, B., Lea, M.-A., Patterson, T., Andrews-Goff, V., Sharples, R., Charrassin, J.-B., et al. (2014). Important marine habitat off east Antarctica revealed by two decades of multi-species predator tracking. *Ecography* 2014:1021. doi: 10.1111/ecog.01021
- Rogers, A. D., Frinault, B. A. V., Barnes, D. K. A., Bindoff, N. L., Downie, R., Ducklow, H. W., et al. (2020). Antarctic Futures: An Assessment of Climate-Driven Changes in Ecosystem Structure, Function, and Service Provisioning in the Southern Ocean. *Annu. Rev. Mar. Sci.* 12, 87–120. doi: 10.1146/annurev-marine-010419-011028
- Roquet, F., Williams, G. D., Hindell, M., Harcourt, R., McMahon, C. R., Charrassin, J. B., et al. (2014). A Southern Indian Ocean database of hydrographic profiles obtained with instrumented elephant seals. *Nat. Sci. Data* 1:140028. doi: 10.1038/sdata.2014.28
- Russell, D. J. F., McClintock, B. T., Matthiopoulos, J., Thompson, P. M., Thompson, D., Hammond, P. S., et al. (2015). Intrinsic and extrinsic drivers of activity budgets in sympatric grey and harbour seals. *Oikos* 124, 1462–1472. doi: 10.1111/oik.01810
- Salton, M., Kirkwood, R., SLip, D., and Harcourt, R. (2019). Mechanisms for sex-based segregation in foraging behaviour by a polygynous marine carnivore. *Mar. Ecol. Progr. Ser.* 624, 213–226. doi: 10.3354/meps13036
- Schwarz, J. F. L., Mews, S., DeRango, E. J., Langrock, R., Piedrahita, P., Paez-Rosas, D., et al. (2021). Individuality counts: A new comprehensive approach to foraging strategies of a tropical marine predator. *Oecologia* 195, 313–325. doi: 10.1007/s00442-021-04850-w
- Sequeira, A. M. M., Rodriguez, J. C., Eguiluz, V. M., Harcourt, R., Hindell, M., Sims, D. W., et al. (2018). Convergence of marine megafauna movement patterns in coastal and open oceans. *Proc. Natl. Acad. Sci.* 2018:1716137115. doi: 10.1073/pnas.1716137115
- Shero, M. R., Goetz, K. T., Costa, D. P., and Burns, J. M. (2018). Temporal changes in Weddell seal dive behavior over winter: Are females increasing foraging effort to support gestation? *Ecol. Evol.* 8, 11857–11874. doi: 10.1002/ece3.4643
- Shero, M. R., Krotz, R. T., Costa, D. P., Avery, J. P., Burns, J. M., and Konarzewski, M. (2015). How do overwinter changes in body condition and hormone profiles influence Weddell seal reproductive success? *Funct. Ecol.* 2015:12434. doi: 10.1111/1365-2435.12434
- Smith, W. O., Ainley, D. G., and Cattaneo-Vietti, R. (2007). Trophic interactions within the Ross Sea continental shelf ecosystem. *Philosoph. Transac. R. Soc. B-Biol. Sci.* 362, 95–111. doi: 10.1098/rstb.2006.1956
- Steinhoff, P. O. M., Warfen, B., Voigt, S., Uhl, G., and Dammhahn, M. (2020). Individual differences in risk-taking affect foraging across different landscapes of fear. *Oikos* 129, 1891–1902. doi: 10.1111/oik.07508
- Stephens, D. W. (2008). Decision ecology: foraging and the ecology of animal decision making. *Cogn. Affect. Behav. Neurosci.* 8, 475–484. doi: 10.3758/CABN.8.4.475
- Stephens, D. W., and Krebs, C. J. (1986). *Foraging theory*. Princeton: Princeton University Press.
- Stirling, I. (1969). Ecology of the Weddell Seal in McMurdo Sound, Antarctica. *Ecology* 50, 573–586. doi: 10.2307/1936247
- Teschke, K., Pehlke, H., Siegel, V., Bornemann, H., Knust, R., and Brey, T. (2020). An integrated compilation of data sources for the development of a marine protected area in the Weddell Sea. *Earth Syst. Sci. Data* 12, 1003–1023. doi: 10.5194/essd-12-1003-2020
- Testa, J. W. (1994). Over-winter movements and diving behaviour of female Weddell seals (*Leptonychotes weddellii*) in the southwestern Ross Sea, Antarctica. *Can. J. Zool.* 72, 1700–1710. doi: 10.1139/z94-229
- Thompson, D., and Fedak, M. A. (2001). How long should a dive last? A simple model of foraging decisions by breath-hold divers in a patchy environment. *Anim. Behav.* 61, 287–296. doi: 10.1006/anbe.2000.1539
- Toscano, B. J., Gownaris, N. J., Heerhartz, S. M., and Monaco, C. J. (2016). Personality, foraging behavior and specialization: integrating behavioral and food web ecology at the individual level. *Oecologia* 182, 55–69. doi: 10.1007/s00442-016-3648-8
- Troxell-Smith, S. M., and Mella, V. S. A. (2017). “You Are What You Eat: The Interplay Between Animal Personality and Foraging Ecology,” in *Personality in Nonhuman Animals*, eds J. Vonk, A. Weiss, and S. Kuczaj (Cham: Springer), 295–305. doi: 10.1007/978-3-319-59300-5\_15
- Villegas-Amtmann, S., Costa, D. P., Tremblay, Y., Salazar, S., and Auriolles-Gamboa, D. (2008). Multiple foraging strategies in a marine apex predator, the Galapagos sea lion *Zalophus wollebaeki*. *Mar. Ecol. Progr. Ser.* 363, 299–309. doi: 10.3354/meps07457
- Votier, S. C., Fayet, A. L., Bearhop, S., Bodey, T. W., Clark, B. L., Grecian, J., et al. (2017). Effects of age and reproductive status on individual foraging site fidelity in a long-lived marine predator. *Proceedings of the Royal Society B* 2017, 284. doi: 10.1098/rspb.2017.1068
- Weise, M. J., Harvey, J. T., and Costa, D. P. (2010). The role of body size in individual-based foraging strategies of a top marine predator. *Ecology* 91, 1004–1015. doi: 10.1890/08-1554.1
- Wheatley, K. E., Bradshaw, C. J. A., Davis, L. S., Harcourt, R. G., and Hindell, M. A. (2006). Influence of maternal mass and condition on energy transfer in Weddell seals. *J. Anim. Ecol.* 75, 724–733. doi: 10.1111/j.1365-2656.2006.01093.x
- Williams, G. D., Herraiz-Borreguero, L., Roquet, F., Tamura, K., Ohshima, K. I., Fukamachi, Y., et al. (2016). The suppression of Antarctic Bottom Water formation by melting ice shelves in Prydz Bay. *Nat. Comm.* 2016:12577. doi: 10.1038/NCOMMS12577
- Williams, T. M., Fuiman, L. A., Horning, M., and Davis, R. W. (2004). The cost of foraging by a marine predator, the Weddell seal *Leptonychotes weddellii*: pricing by the stroke. *J. Exp. Biol.* 207, 973–982. doi: 10.1242/jeb.00822
- Williams, T. M., Fuiman, L. A., Kendall, T., Berry, P., Richter, B., Noren, S. R., et al. (2015). Exercise at depth alters bradycardia and incidence of cardiac anomalies in deep-diving marine mammals. *Nat. Comm.* 6:6055. doi: 10.1038/ncomms7055

**Conflict of Interest:** The authors declare that the research was conducted in the absence of any commercial or financial relationships that could be construed as a potential conflict of interest.

**Publisher's Note:** All claims expressed in this article are solely those of the authors and do not necessarily represent those of their affiliated organizations, or those of the publisher, the editors and the reviewers. Any product that may be evaluated in this article, or claim that may be made by its manufacturer, is not guaranteed or endorsed by the publisher.

Copyright © 2021 Harcourt, Hindell, McMahon, Goetz, Charrassin, Heerah, Holser, Jonsen, Shero, Hoenner, Foster, Lenting, Tarsisz and Pinkerton. This is an open-access article distributed under the terms of the Creative Commons Attribution License (CC BY). The use, distribution or reproduction in other forums is permitted, provided the original author(s) and the copyright owner(s) are credited and that the original publication in this journal is cited, in accordance with accepted academic practice. No use, distribution or reproduction is permitted which does not comply with these terms.