



AMS

American Meteorological Society

Supplemental Material

Changes in the MJO under Greenhouse Gas–Induced Warming in CMIP5 Models

Stephanie S. Rushley and Daehyun Kim

Department of Atmospheric Sciences, University of Washington, Seattle, Washington

Ángel F. Adames

Department of Climate and Space Science and Engineering, University of Michigan, Ann Arbor, Michigan

(Manuscript received 5 July 2018,
in final form 19 November 2018)

Corresponding author: Daehyun Kim, daehyun@uw.edu
DOI: 10.1175/JCLI-D-18-0437.1

© Copyright 2018 American Meteorological Society

Permission to use figures, tables, and brief excerpts from this work in scientific and educational works is hereby granted provided that the source is acknowledged. Any use of material in this work that is determined to be “fair use” under Section 107 of the U.S. Copyright Act or that satisfies the conditions specified in Section 108 of the U.S. Copyright Act (17 USC §108) does not require the AMS’s permission. Republication, systematic reproduction, posting in electronic form, such as on a website or in a searchable database, or other uses of this material, except as exempted by the above statement, requires written permission or a license from the AMS. All AMS journals and monograph publications are registered with the Copyright Clearance Center (<http://www.copyright.com>). Questions about permission to use materials for which AMS holds the copyright can also be directed to permissions@ametsoc.org. Additional details are provided in the AMS Copyright Policy statement, available on the AMS website (<http://www.ametsoc.org/CopyrightInformation>).

Supplemental Figures

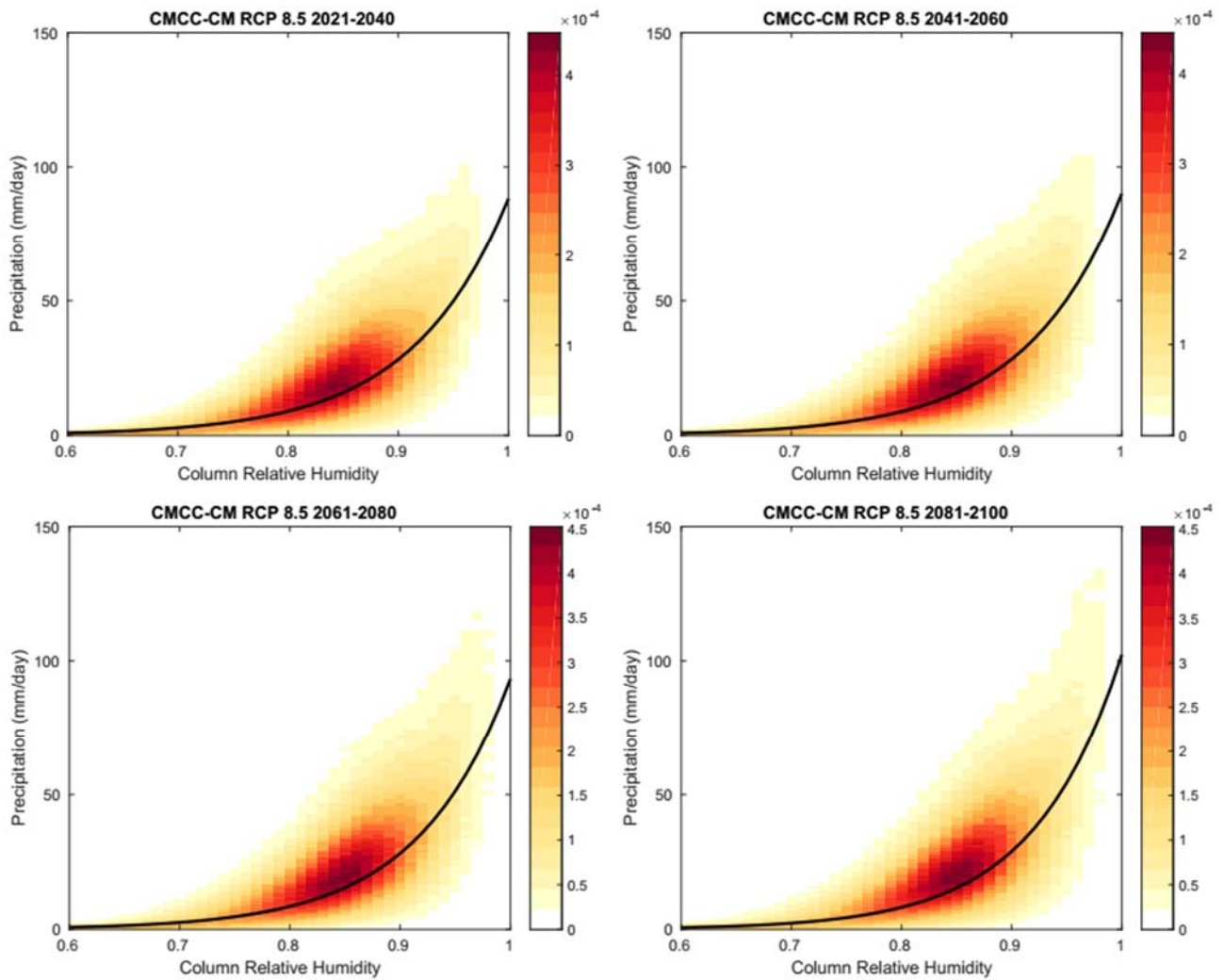


Figure S1: Joint PDF of precipitation and CRH (shading) and the non-linear fit to the moisture-precipitation relationship (black line) for twenty years of periods of RCP 8.5 (individual panels) in the CMCC-CM model.

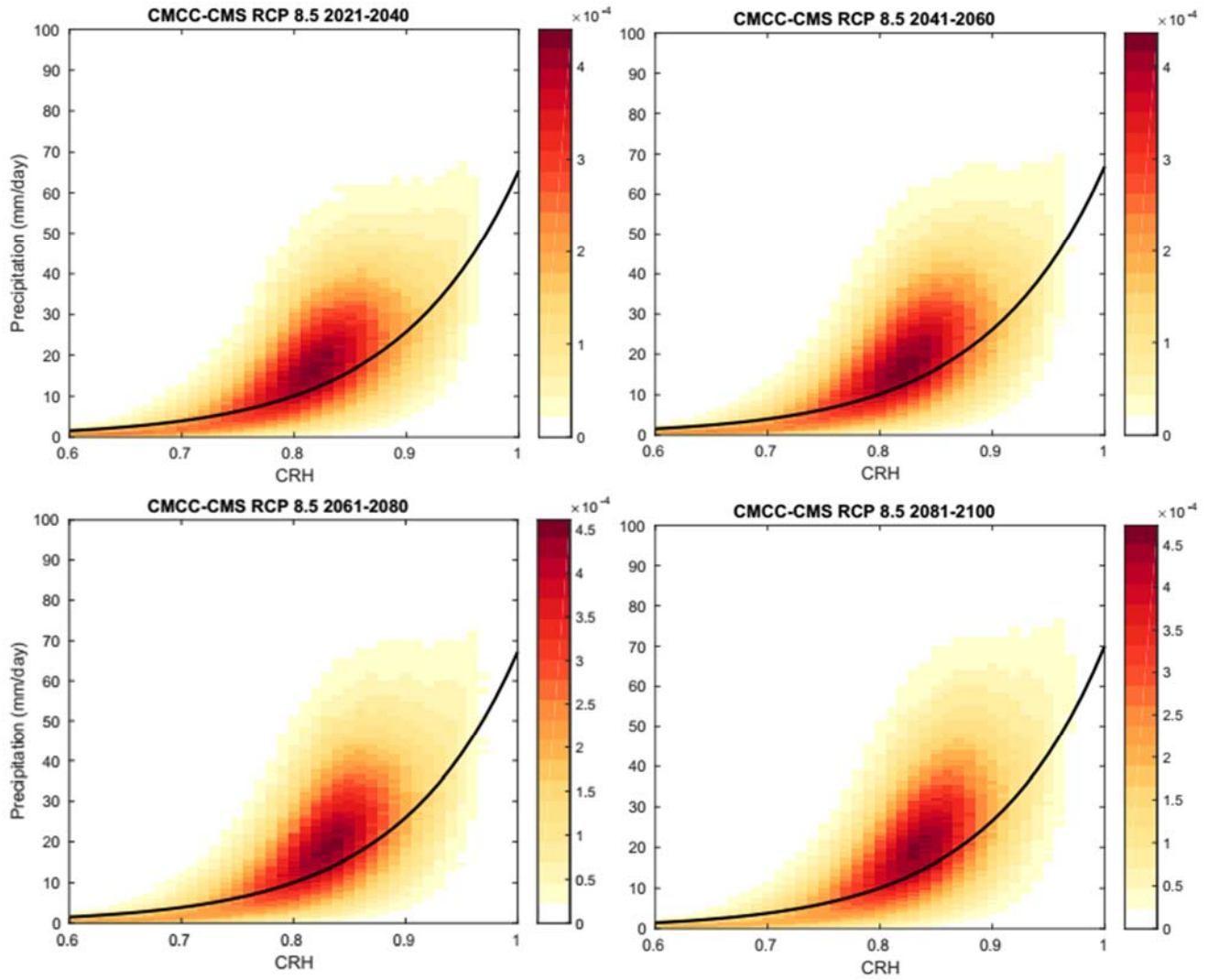


Figure S2: Same as in Figure S1 but for the CMCC-CMS model.

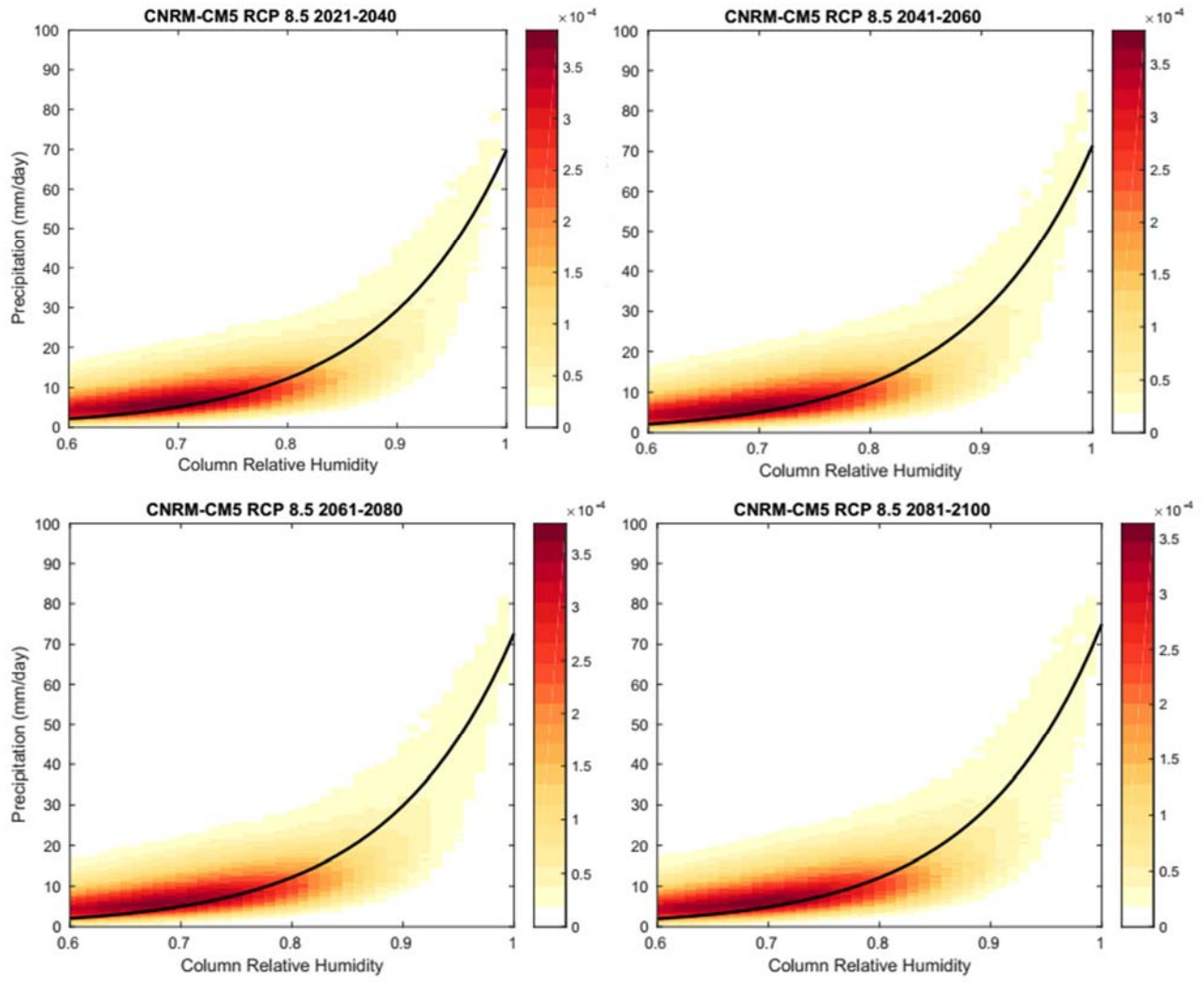


Figure S3: Same as in Figure S1 but for the CNRM-CM5 model.

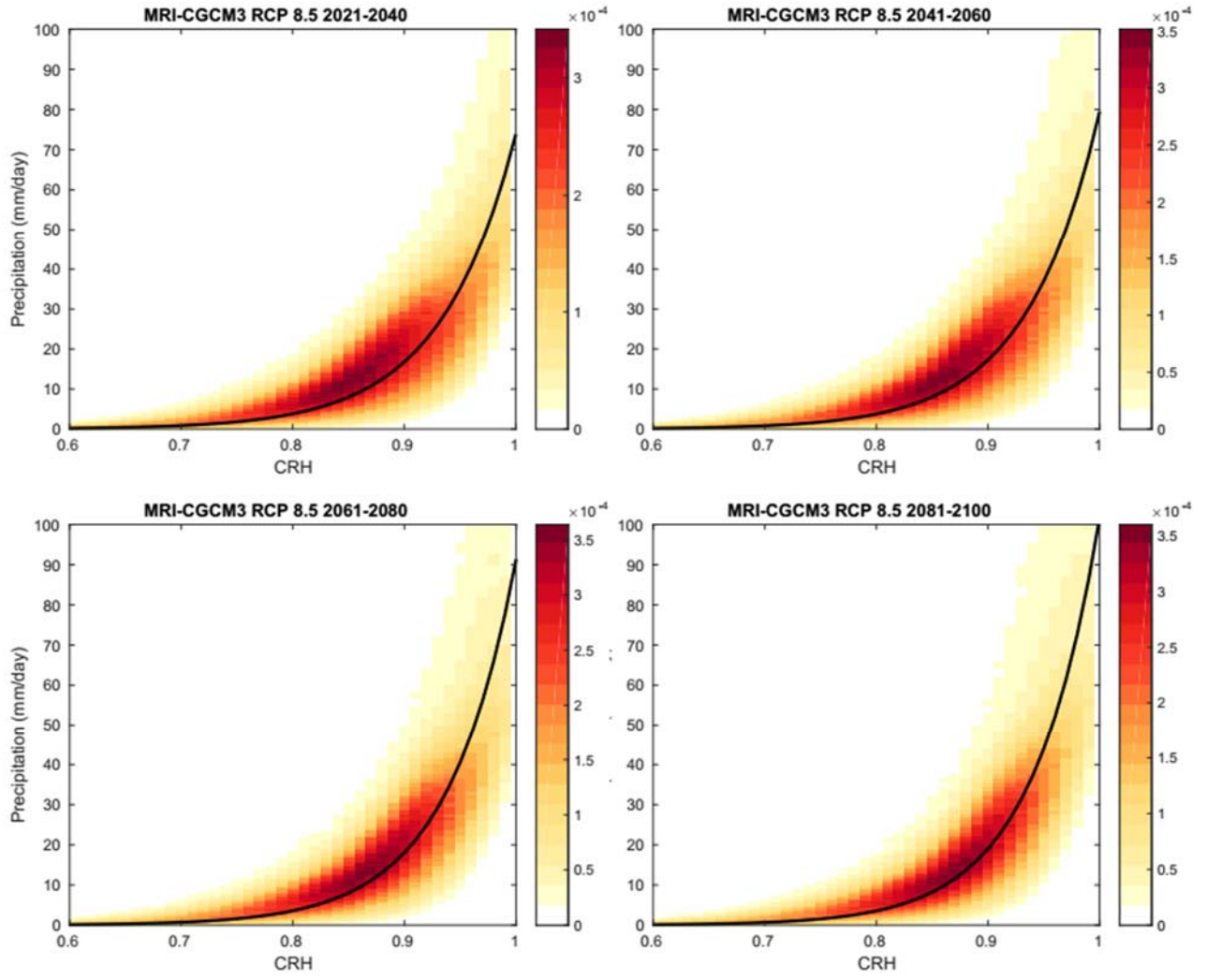


Figure S4: Same as in Figure S1 but for the MRI-CGCM3 model.

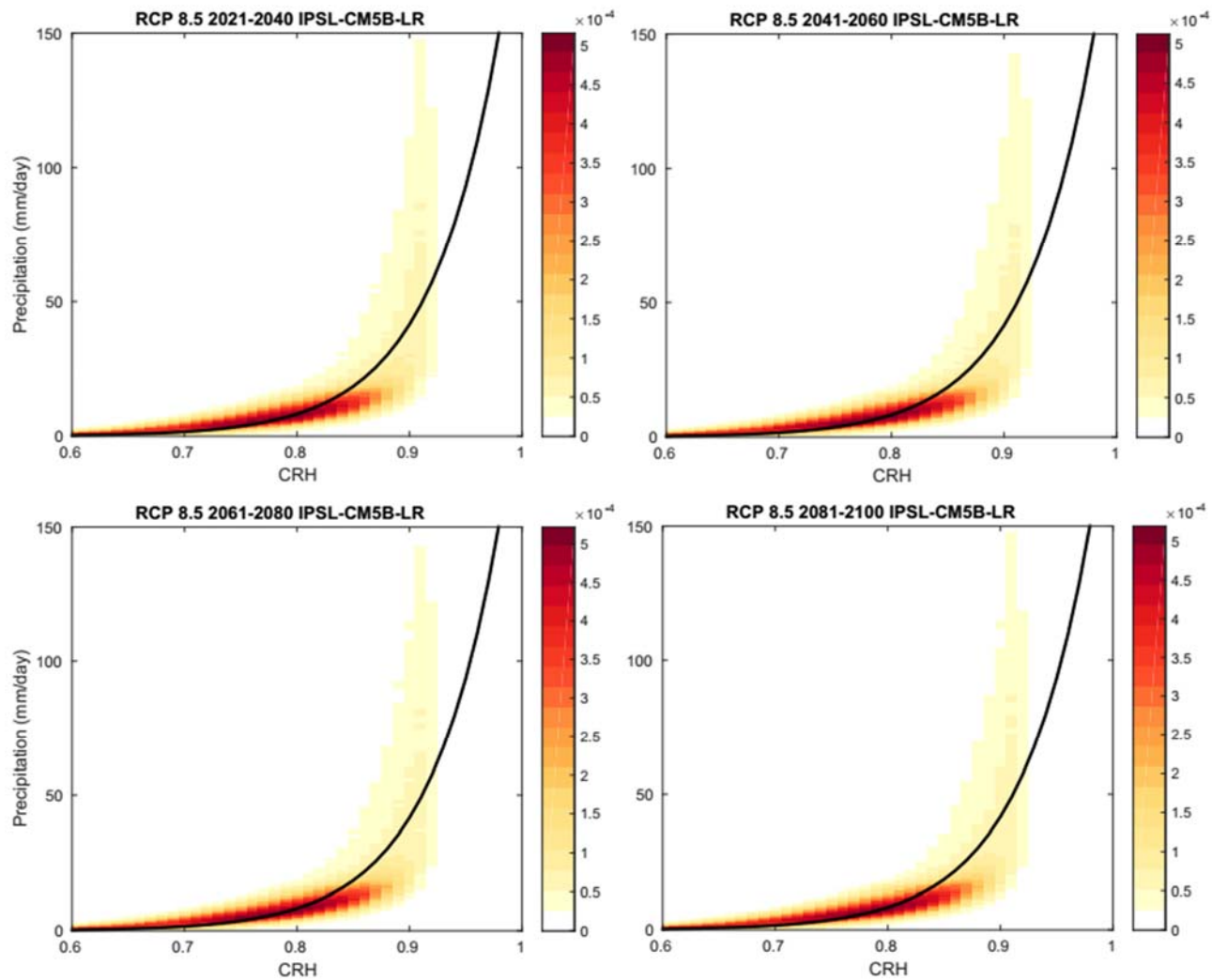


Figure S5: Same as in Figure S1 but for the IPSL-CM5B-LR model.