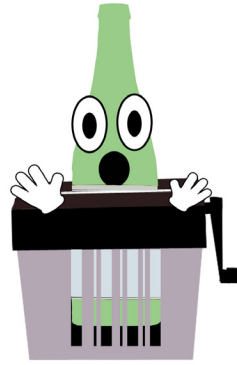


Empty HI 5¢ glass bottles are redeemed at a reverse vending machine or redemption center



Local recycling companies semi-crush the glass

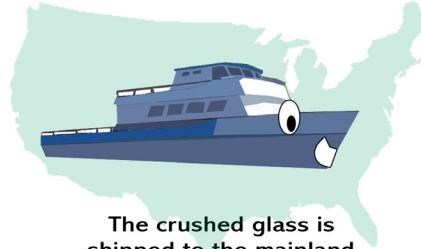


Glass is further crushed by local companies

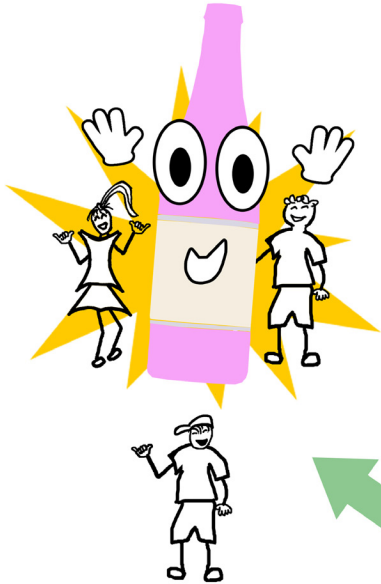
The crushed glass is used as glasphalt pavement locally



New bottles are made and filled!



The crushed glass is shipped to the mainland



Mainland companies further crush and melt down the glass

LIFE CYCLE OF A GLASS BOTTLE IN HAWAII