

Maps of Charlotte County General Permit Trafficked Channels and Secondary Channels



Robert A. Swett
David A. Fann
Elizabeth Staugler

SGEF-209
July 2014



This publication was supported by the National Sea Grant College Program of the U.S. Department of Commerce's National Oceanic and Atmospheric Administration (NOAA), Grant No. NA14OAR4170108. The views expressed are those of the authors and do not necessarily reflect the view of these organizations. Additional copies are available by contacting Florida Sea Grant, University of Florida, PO Box 110409, Gainesville, FL, 32611-0409, (352) 392.2801, www.flseagrant.org.

Maps of Charlotte County General Permit Trafficshed Channels and Secondary Channels

**Robert A. Swett
David A. Fann
Elizabeth Staugler**

**SGEF-209
July 2014**

Foreword

This document is a collection of maps, prepared by Florida Sea Grant, that depict channels included in the Charlotte County General Permit (GP)¹. Each map shows either (a) channel segments within a GP trafficshed² or (b) segments in a GP secondary channel system (contains channels that route vessels from one or more trafficsheds to deep, open water). West Coast Inland Navigation District (WCIND) policy requires that navigational safety factors and/or the provision of access to public facilities determine eligibility of channel segments for inclusion in the GP.

Channel segments are symbolized by line thickness to highlight those for which dredging is anticipated under the GP given waterway depths measured during the field survey³. The symbology is determined by subtracting the measured MLLW⁴ depth of each channel segment from the GP depth (determined for the entire trafficshed or secondary channel system). If the difference is greater than zero, the status “GP Dredging Anticipated” is assigned. Otherwise, the status is “GP Dredging Not Anticipated.” Each map includes summary statistics of total GP channel length, total length of channel segments for which GP dredging is anticipated, and GP dredge depth.

The channel segments are waterway centerlines constructed from depths measured for the Charlotte County Regional Waterway Management System project (2013)⁵.

¹ Rule 62-330.411 General Permit for Public Navigation Channel and Canal Infrastructure by the West Coast Inland Navigation District within Charlotte County.
<https://www.flrules.org/gateway/ChapterHome.asp?Chapter=62-330>.

² The term trafficshed is used to define an area that contains a concentration of boats that use a common channel, exclusive to the trafficshed, to gain access to secondary access channels and, ultimately, to deep, open water.

³ Select channel segments that are associated with Bass Inlet Secondary Channel (page 6), Beeney/Bangsborg/Severin Waterway (page 7), Dover Canal (page 12), and Santa Clara Canal (page 26) currently have adequate navigability, but are candidates for the GP based on the county maintenance program history and anticipated future maintenance needs.

⁴ Mean Lower Low Water tidal datum.

⁵ Swett, R.A., D.A. Fann, and B. Staugler. 2012. Regional Waterway Management System for Charlotte County, FL. Florida Sea Grant Technical Paper 181. Gainesville, FL Florida Sea Grant College Program.

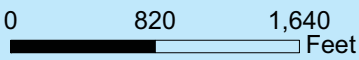
Table of Figures
Trafficshed and secondary channel maps

- | | |
|--|---|
| 1. Ackerman Waterway System | 15. Gottfried Creek-Englewood Secondary Channel |
| 2. Ainger Creek | 16. Little Alligator Creek |
| 3. Alligator Bay Secondary Channel | 17. Myakka River Secondary Channel |
| 4. Balboa Canal | 18. Oyster Creek |
| 5. Baldwin/Olman/Severin Road Waterway | 19. Peace Island-East |
| 6. Bass Inlet Secondary Channel | 20. Punta Gorda Isles-Tarpon/Pompano Inlet |
| 7. Beeney/Bangsburg/Severin Waterway | 21. Punta Gorda Isles-Bass Inlet |
| 8. Broad Creek | 22. Punta Gorda Marina |
| 9. Canal Waterway | 23. San Marino Canal |
| 10. Countryman Waterway System | 24. San Salvador Canal |
| 11. DeSoto Canal | 25. Santa Barbara Canal |
| 12. Dover Canal | 26. Santa Clara Canal |
| 13. East Spring Lake Waterway | 27. Whidden Bay Secondary Channel |
| 14. El Jobean | |

Ackerman Waterway System



Source: BNA, Earthstar, BlueBay, Aerial, VECO, 1998, 2001, 2002, 2003, 2004, 2005, 2006, 2007, 2008, 2009, 2010, 2011, 2012, 2013, 2014, 2015, 2016, 2017, 2018, 2019, 2020, 2021, 2022, 2023, 2024, 2025



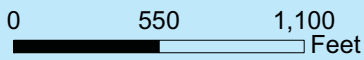
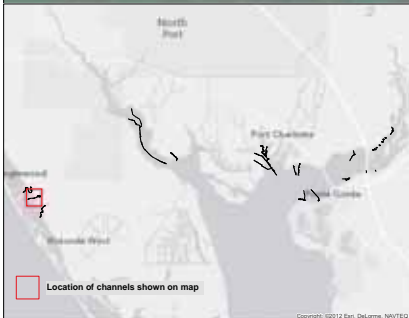
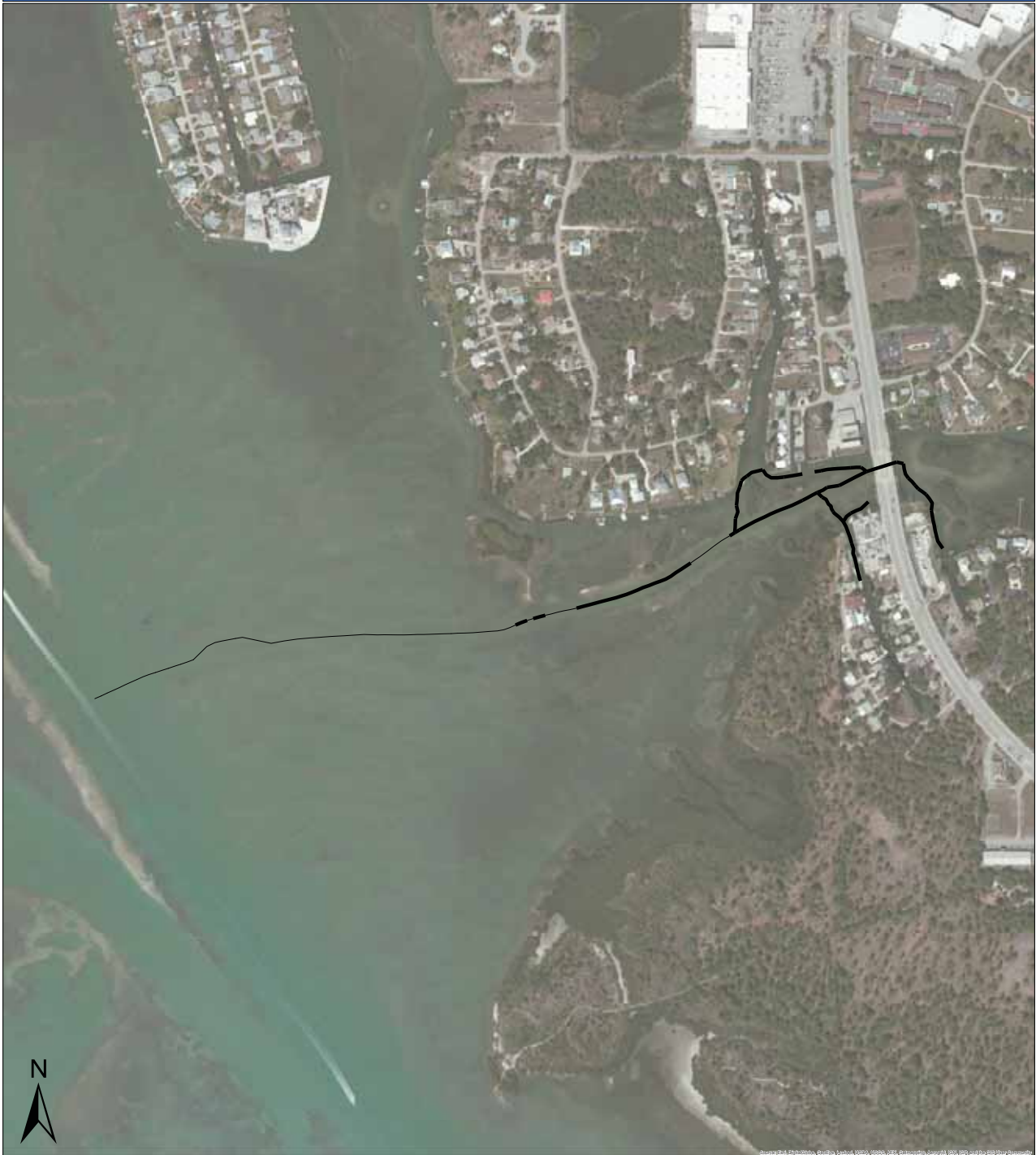
Only those channels belonging to the trafficked or secondary channel system are visible in the map.

Channel Restriction Category

- GP Dredging Not Anticipated
- GP Dredging Anticipated

Total GP channel length: 6,646 ft
 Anticipated dredge length: 4,459 ft
 Design Dredge Depth: 5 ft

Ainger Creek



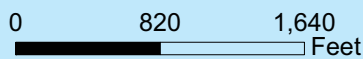
Only those channels belonging to the trafficked or secondary channel system are visible in the map.

Channel Restriction Category

- GP Dredging Not Anticipated
- GP Dredging Anticipated

Total GP channel length: 5,927 ft
 Anticipated dredge length: 3,486 ft
 Design Dredge Depth: 3.5 ft

Alligator Bay Secondary Channel



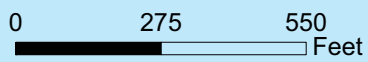
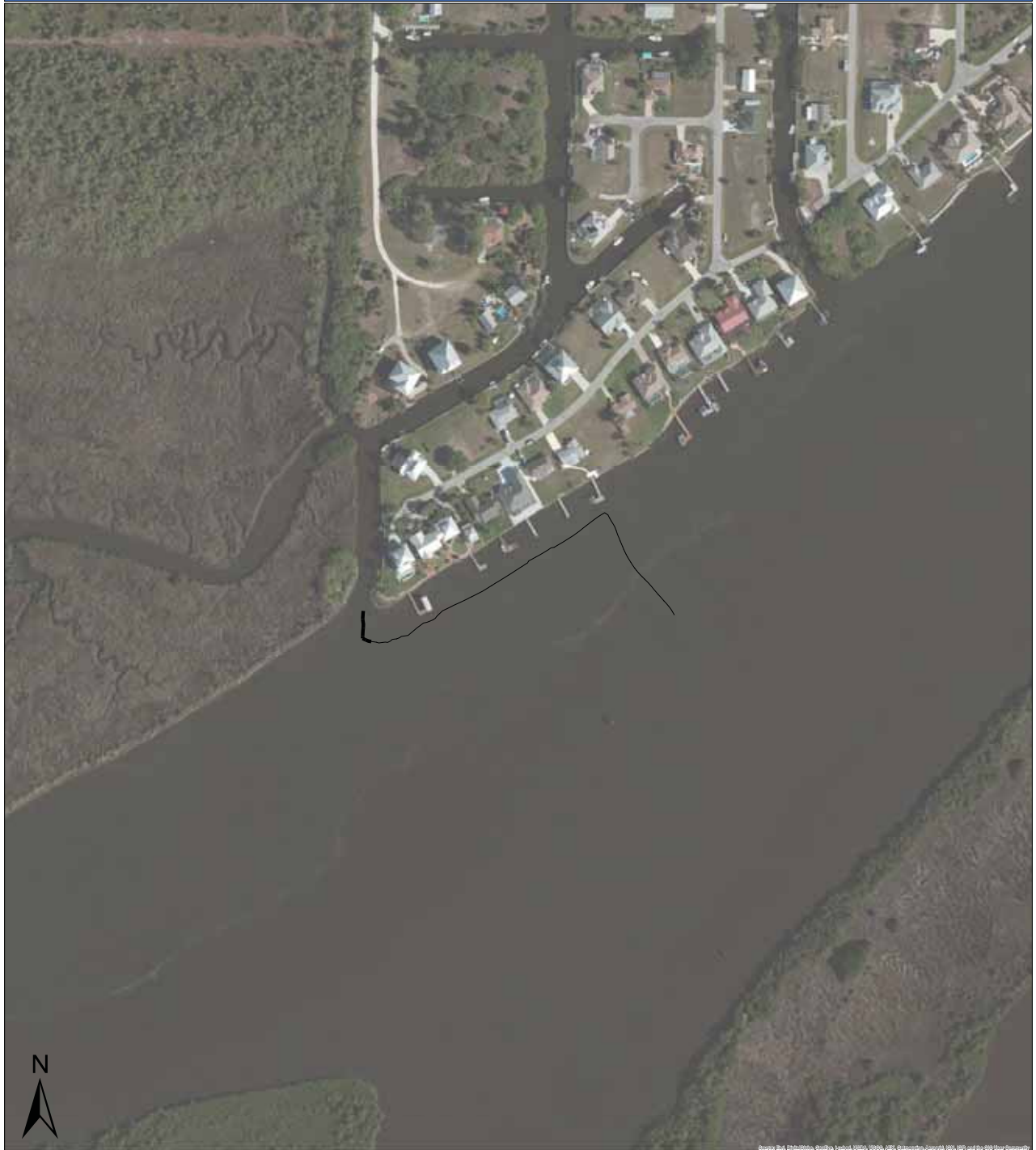
Only those channels belonging to the trafficked or secondary channel system are visible in the map.

Channel Restriction Category

- GP Dredging Not Anticipated
- GP Dredging Anticipated

Total GP channel length: 7,831 ft
 Anticipated dredge length: 4,666 ft
 Design Dredge Depth: 4.5 ft

Balboa Canal



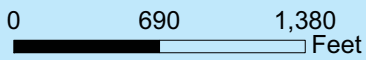
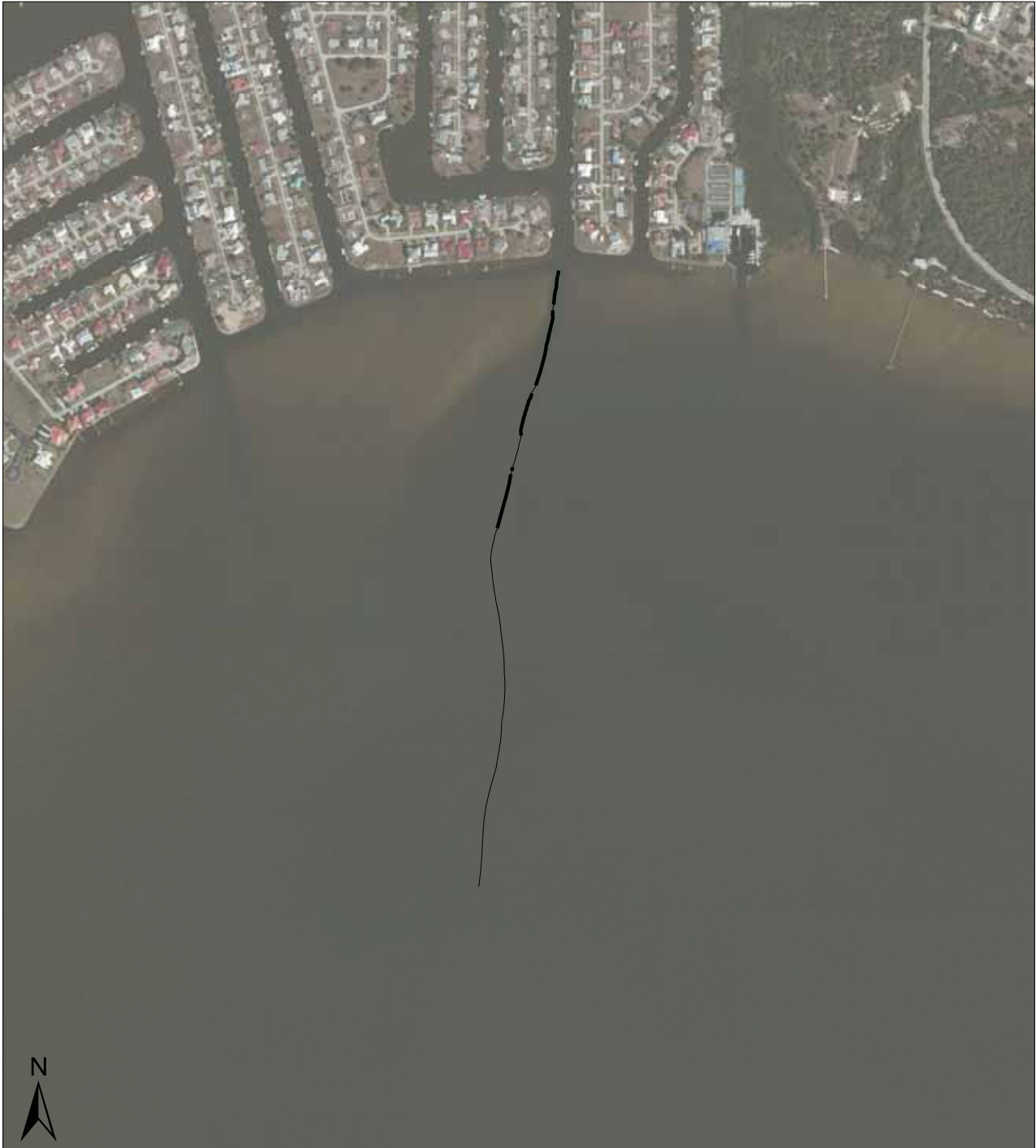
Only those channels belonging to the trafficked or secondary channel system are visible in the map.

Channel Restriction Category

- GP Dredging Not Anticipated
- GP Dredging Anticipated

Total GP channel length: 1,017 ft
 Anticipated dredge length: 86 ft
 Design Dredge Depth: 4.5 ft

Baldwin/Olman/Severin Road Waterway



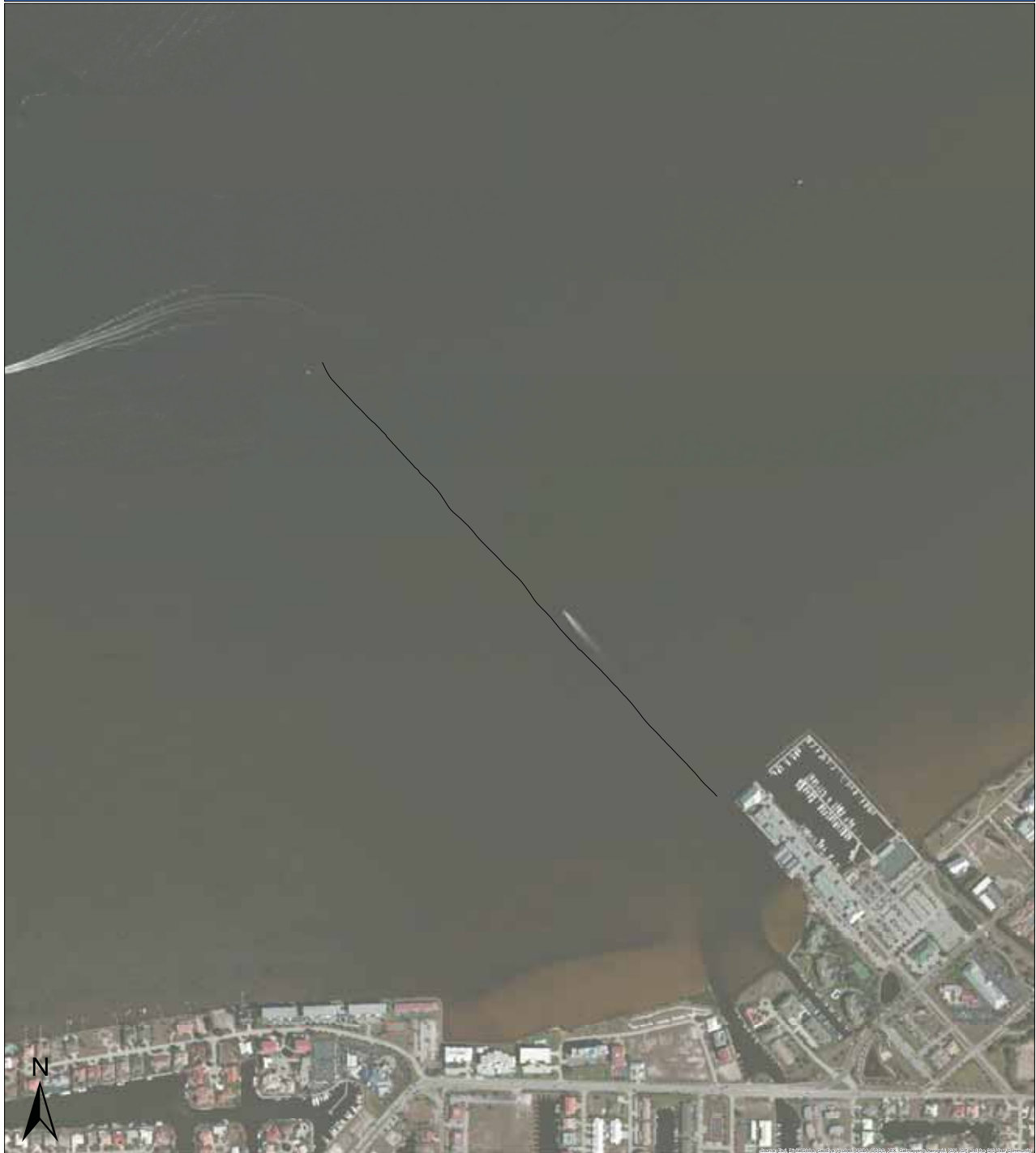
Only those channels belonging to the trafficked or secondary channel system are visible in the map.

Channel Restriction Category

- GP Dredging Not Anticipated
- GP Dredging Anticipated

Total GP channel length: 3,670 ft
 Anticipated dredge length: 1,259 ft
 Design Dredge Depth: 4.5 ft

Bass Inlet Secondary Channel



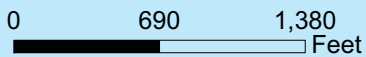
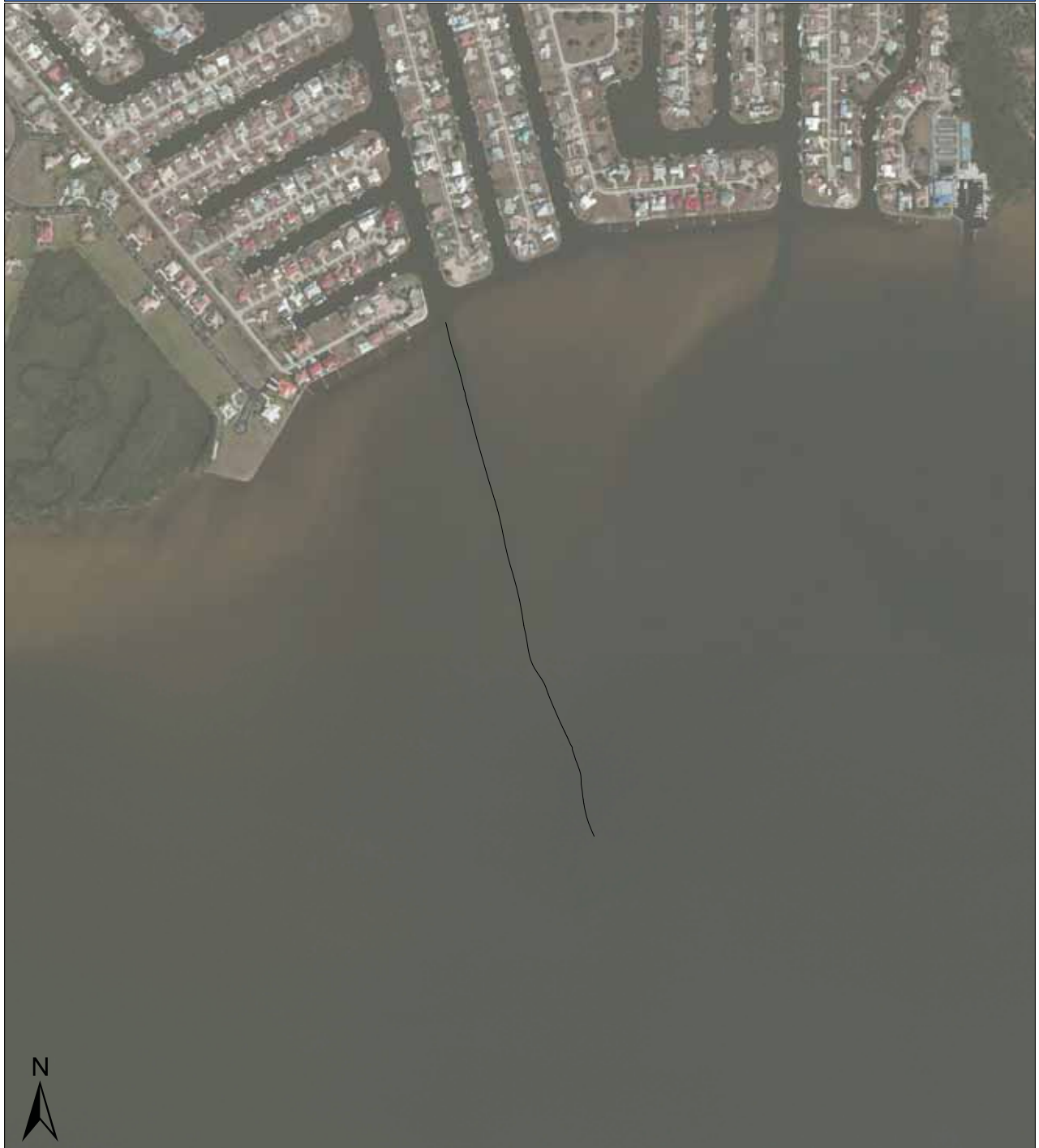
Only those channels belonging to the trafficked or secondary channel system are visible in the map.

Channel Restriction Category

- GP Dredging Not Anticipated
- GP Dredging Anticipated

Total GP channel length: 3,435 ft
 Anticipated dredge length: 0 ft
 Design Dredge Depth: 4.5 ft

Beeney/Bangsborg/Severin Waterway



Only those channels belonging to the trafficked or secondary channel system are visible in the map.

Channel Restriction Category

- GP Dredging Not Anticipated
- GP Dredging Anticipated

Total GP channel length: 3,141 ft
 Anticipated dredge length: 0 ft
 Design Dredge Depth: 3.5 ft

Broad Creek



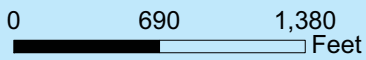
Only those channels belonging to the trafficked or secondary channel system are visible in the map.

Channel Restriction Category

- GP Dredging Not Anticipated
- GP Dredging Anticipated

Total GP channel length: 726 ft
 Anticipated dredge length: 726 ft
 Design Dredge Depth: 3.5 ft

Canal Waterway



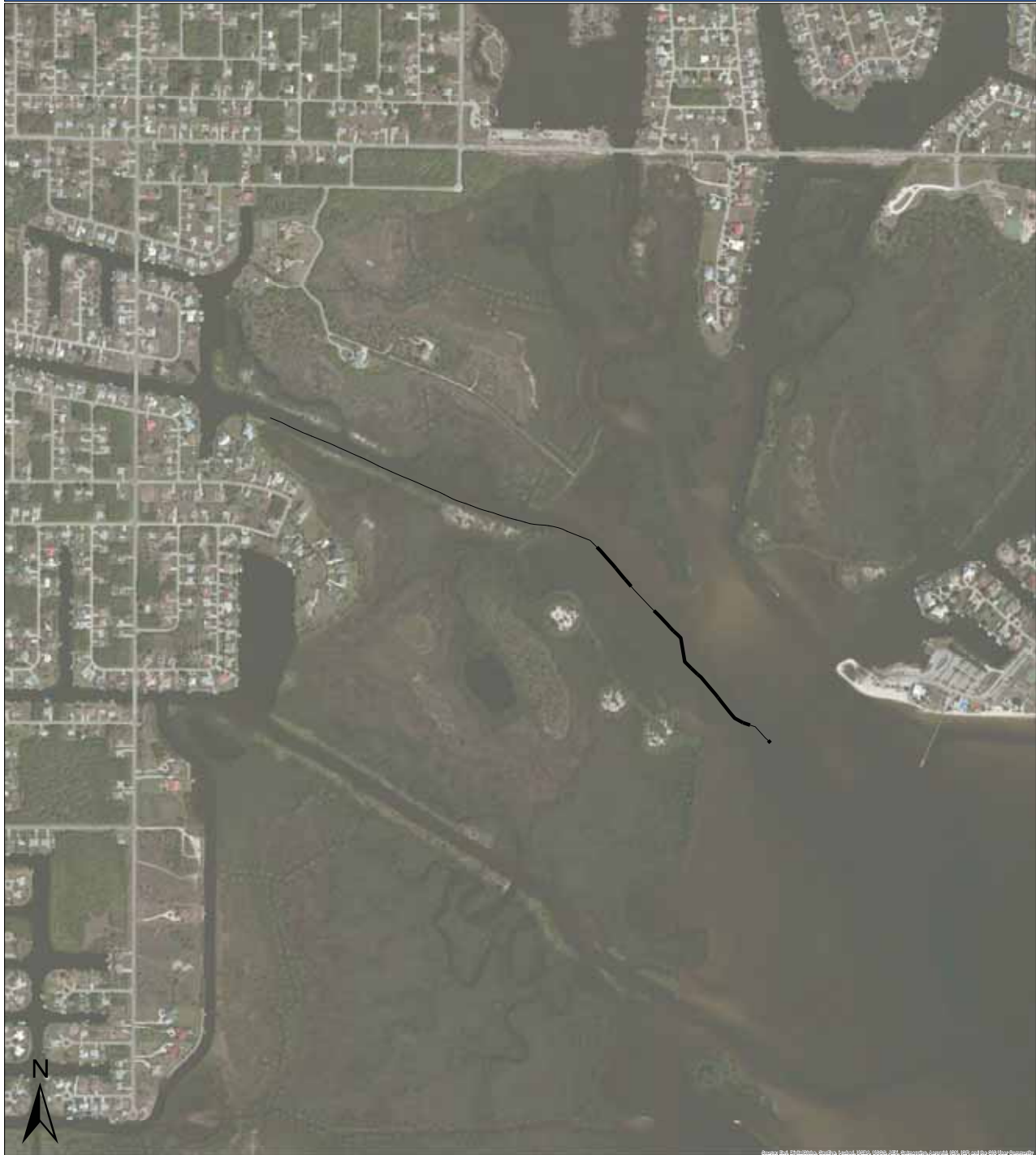
Only those channels belonging to the trafficked or secondary channel system are visible in the map.

Channel Restriction Category

- GP Dredging Not Anticipated
- GP Dredging Anticipated

Total GP channel length: 3,828 ft
 Anticipated dredge length: 2,854 ft
 Design Dredge Depth: 4.5 ft

Countryman Waterway System



0 890 1,780 Feet

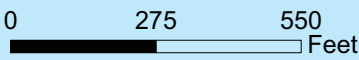
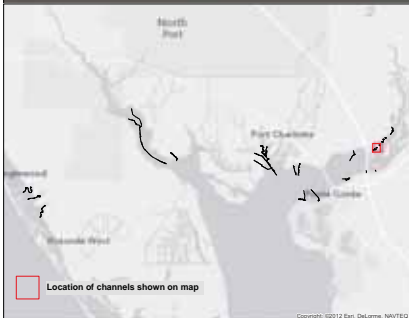
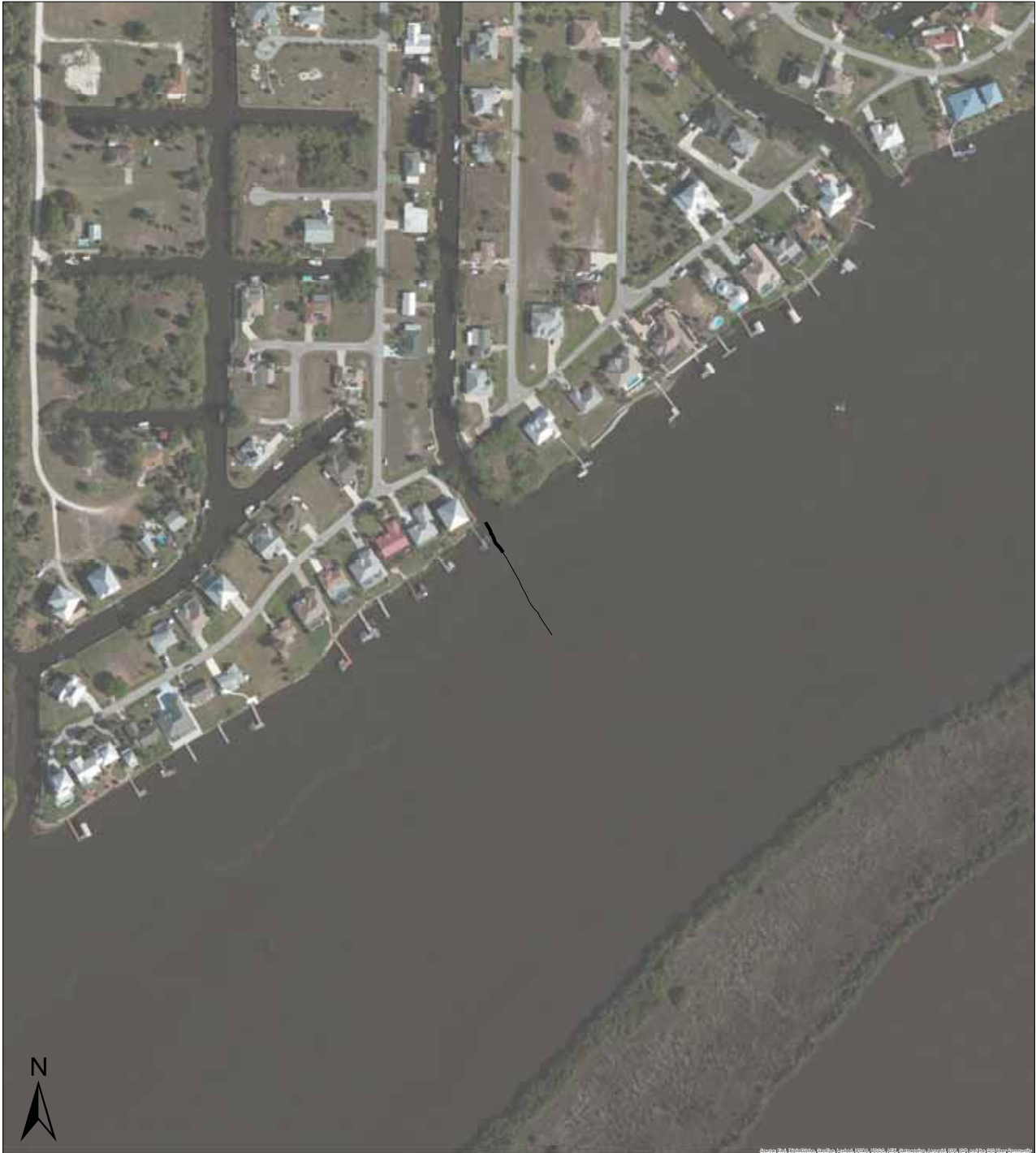
Only those channels belonging to the trafficked or secondary channel system are visible in the map.

Channel Restriction Category

- GP Dredging Not Anticipated
- GP Dredging Anticipated

Total GP channel length: 4,709 ft
 Anticipated dredge length: 1,595 ft
 Design Dredge Depth: 4 ft

DeSoto Canal



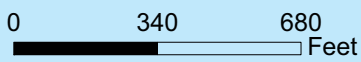
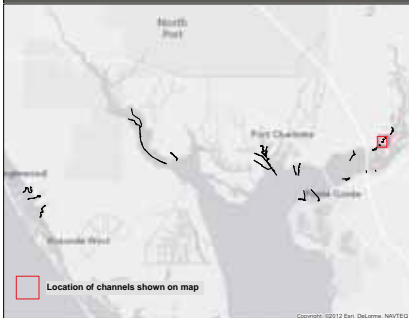
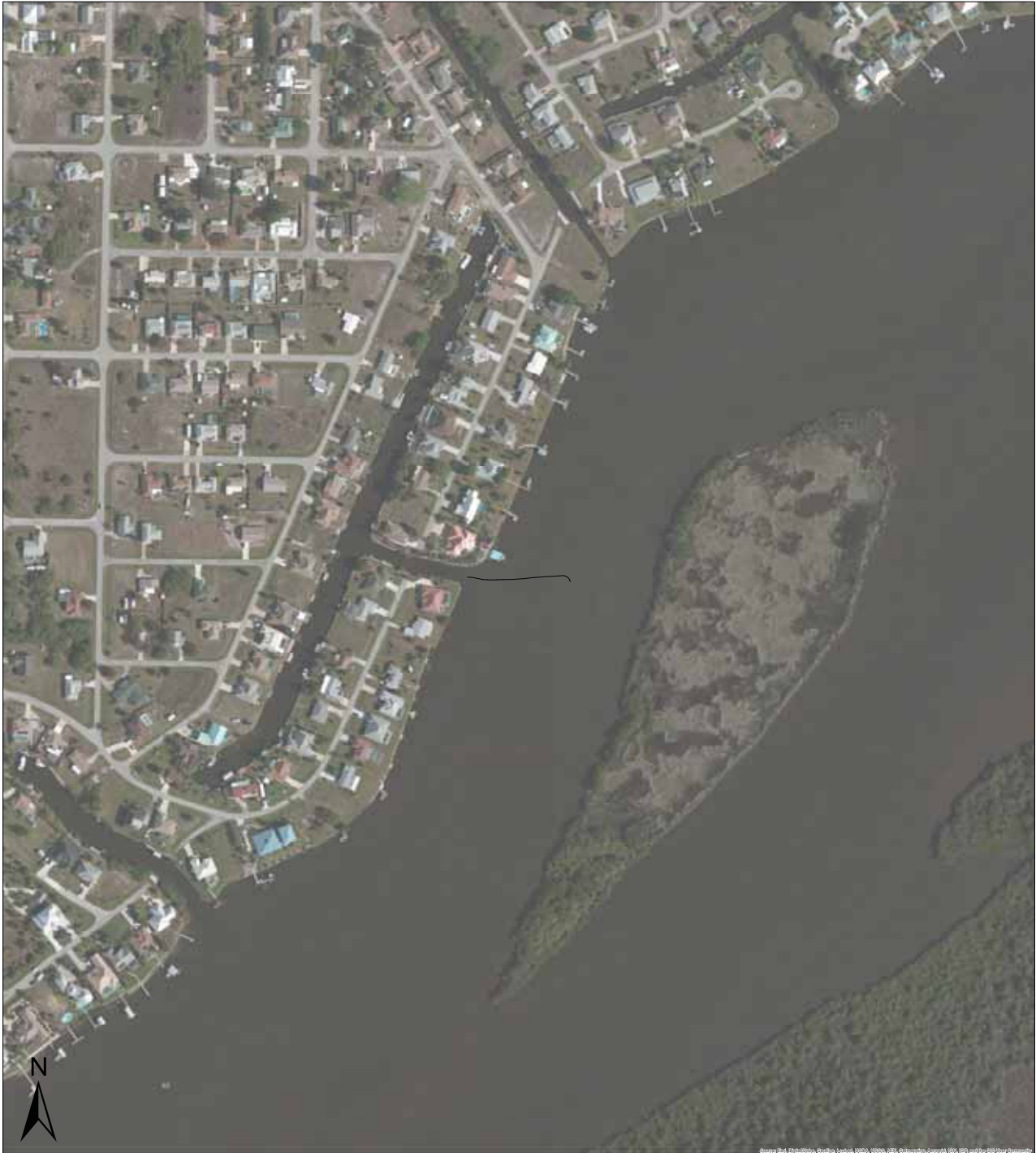
Only those channels belonging to the trafficked or secondary channel system are visible in the map.

Channel Restriction Category

- GP Dredging Not Anticipated
- GP Dredging Anticipated

Total GP channel length: 307 ft
 Anticipated dredge length: 83 ft
 Design Dredge Depth: 4.5 ft

Dover Canal



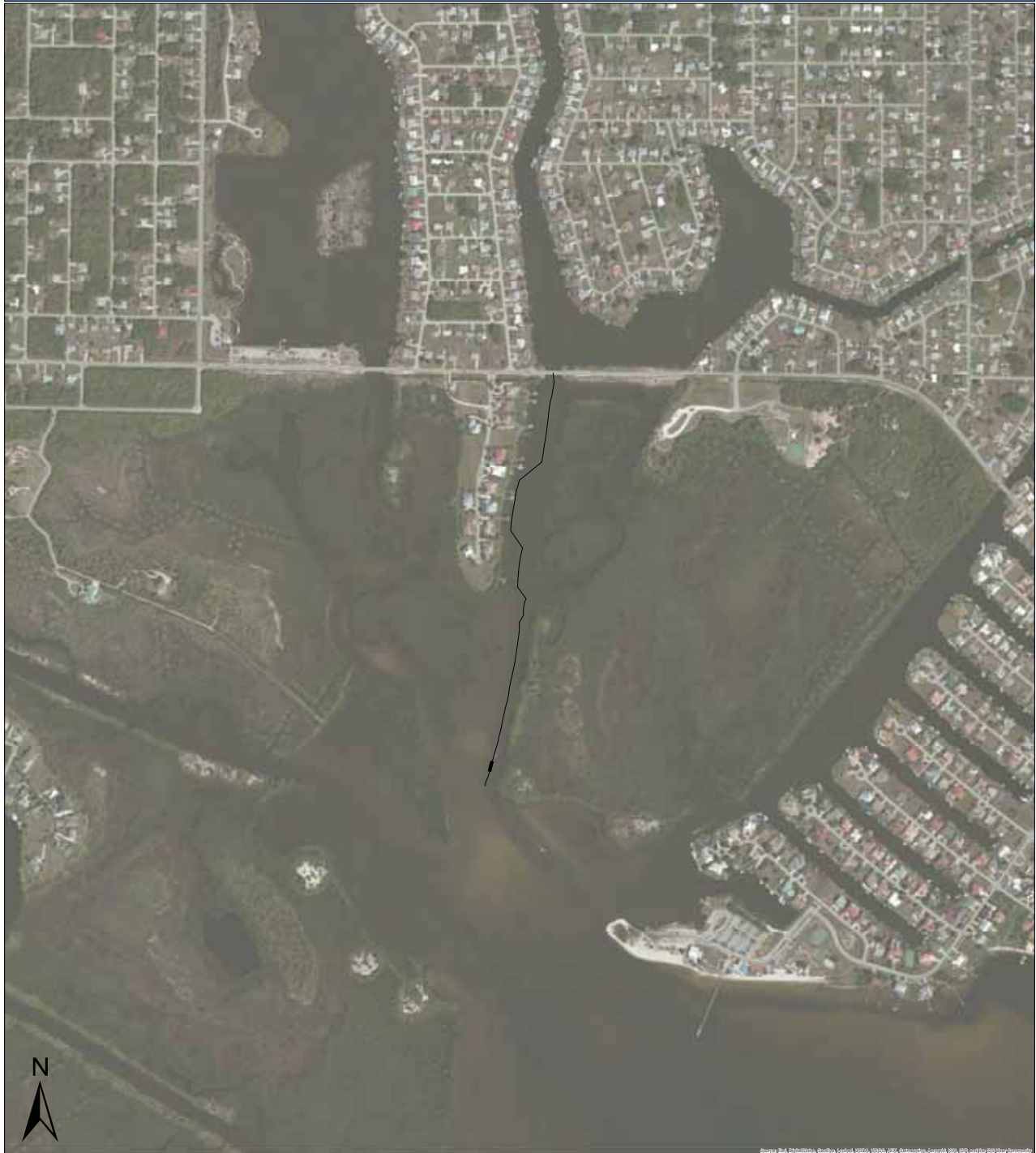
Only those channels belonging to the trafficked or secondary channel system are visible in the map.

Channel Restriction Category

- GP Dredging Not Anticipated
- GP Dredging Anticipated

Total GP channel length: 309 ft
 Anticipated dredge length: 0 ft
 Design Dredge Depth: 4.5 ft

East Spring Lake Waterway



0 820 1,640 Feet

Only those channels belonging to the trafficked or secondary channel system are visible in the map.

Channel Restriction Category

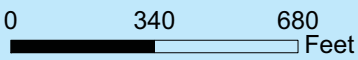
- GP Dredging Not Anticipated
- GP Dredging Anticipated

Total GP channel length: 3,069 ft
 Anticipated dredge length: 75 ft
 Design Dredge Depth: 4.5 ft

El Jobean



Source: BNA, Earthstar, BlueBay, Aerial, VECO, 09/06, J&J, Bluewing, King/AA, 09/06, 09/07 and the 800 Star Community



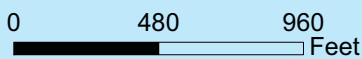
Only those channels belonging to the trafficked or secondary channel system are visible in the map.

Channel Restriction Category

- GP Dredging Not Anticipated
- GP Dredging Anticipated

Total GP channel length: 3,420 ft
 Anticipated dredge length: 432 ft
 Design Dredge Depth: 4.5 ft

Gottfried Creek-Englewood Secondary Channel



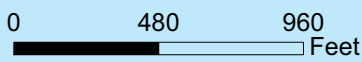
Only those channels belonging to the trafficked or secondary channel system are visible in the map.

Channel Restriction Category

- GP Dredging Not Anticipated
- GP Dredging Anticipated

Total GP channel length: 6,767 ft
 Anticipated dredge length: 1,001 ft
 Design Dredge Depth: 3.5 ft

Little Alligator Creek



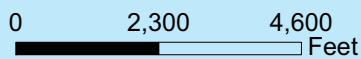
Only those channels belonging to the trafficked or secondary channel system are visible in the map.

Channel Restriction Category

- GP Dredging Not Anticipated
- GP Dredging Anticipated

Total GP channel length: 5,084 ft
 Anticipated dredge length: 2,043 ft
 Design Dredge Depth: 4.5 ft

Myakka River Secondary Channel



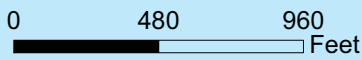
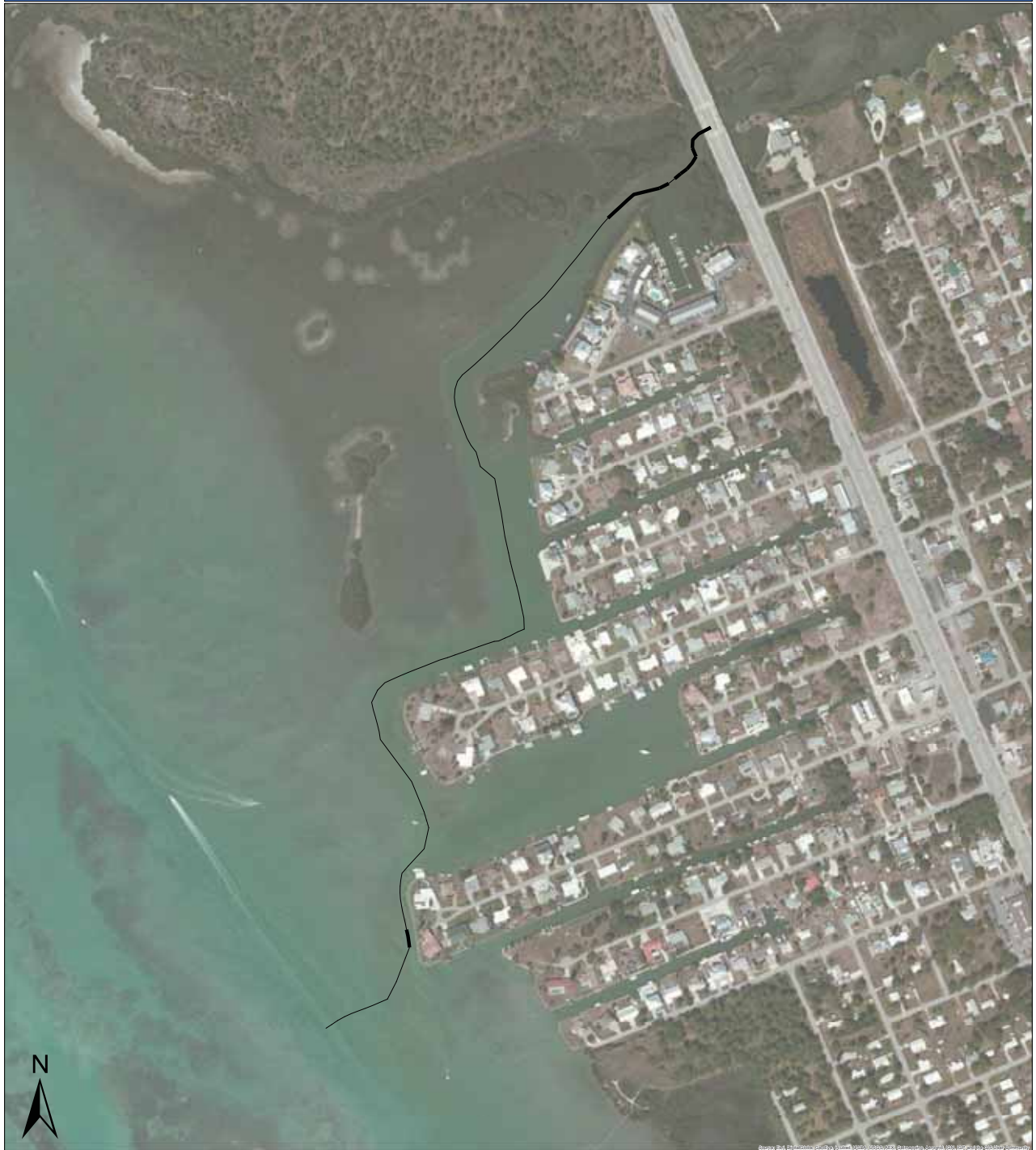
Only those channels belonging to the trafficked or secondary channel system are visible in the map.

Channel Restriction Category

- GP Dredging Not Anticipated
- GP Dredging Anticipated

Total GP channel length: 28,205 ft
 Anticipated dredge length: 7,275 ft
 Design Dredge Depth: 3.5 ft

Oyster Creek



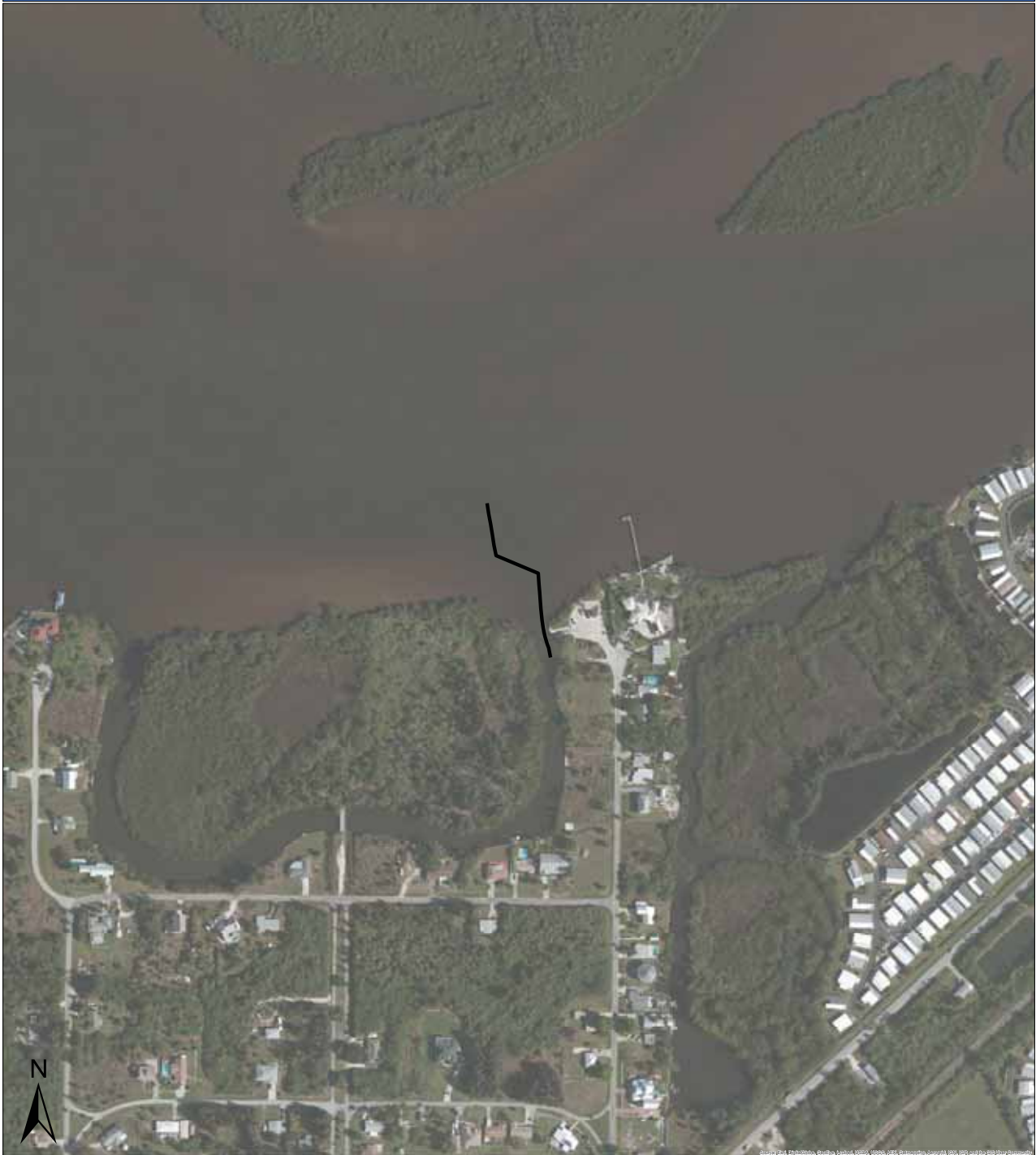
Only those channels belonging to the trafficked or secondary channel system are visible in the map.

Channel Restriction Category

- GP Dredging Not Anticipated
- GP Dredging Anticipated

Total GP channel length: 5,059 ft
 Anticipated dredge length: 659 ft
 Design Dredge Depth: 4 ft

Peace Island-East



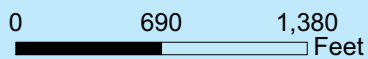
Only those channels belonging to the trafficked or secondary channel system are visible in the map.

Channel Restriction Category

- GP Dredging Not Anticipated
- GP Dredging Anticipated

Total GP channel length: 537 ft
 Anticipated dredge length: 537 ft
 Design Dredge Depth: 3.5 ft

Punta Gorda Isles-Tarpon/Pompano Inlet



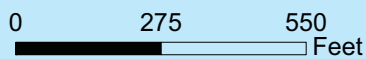
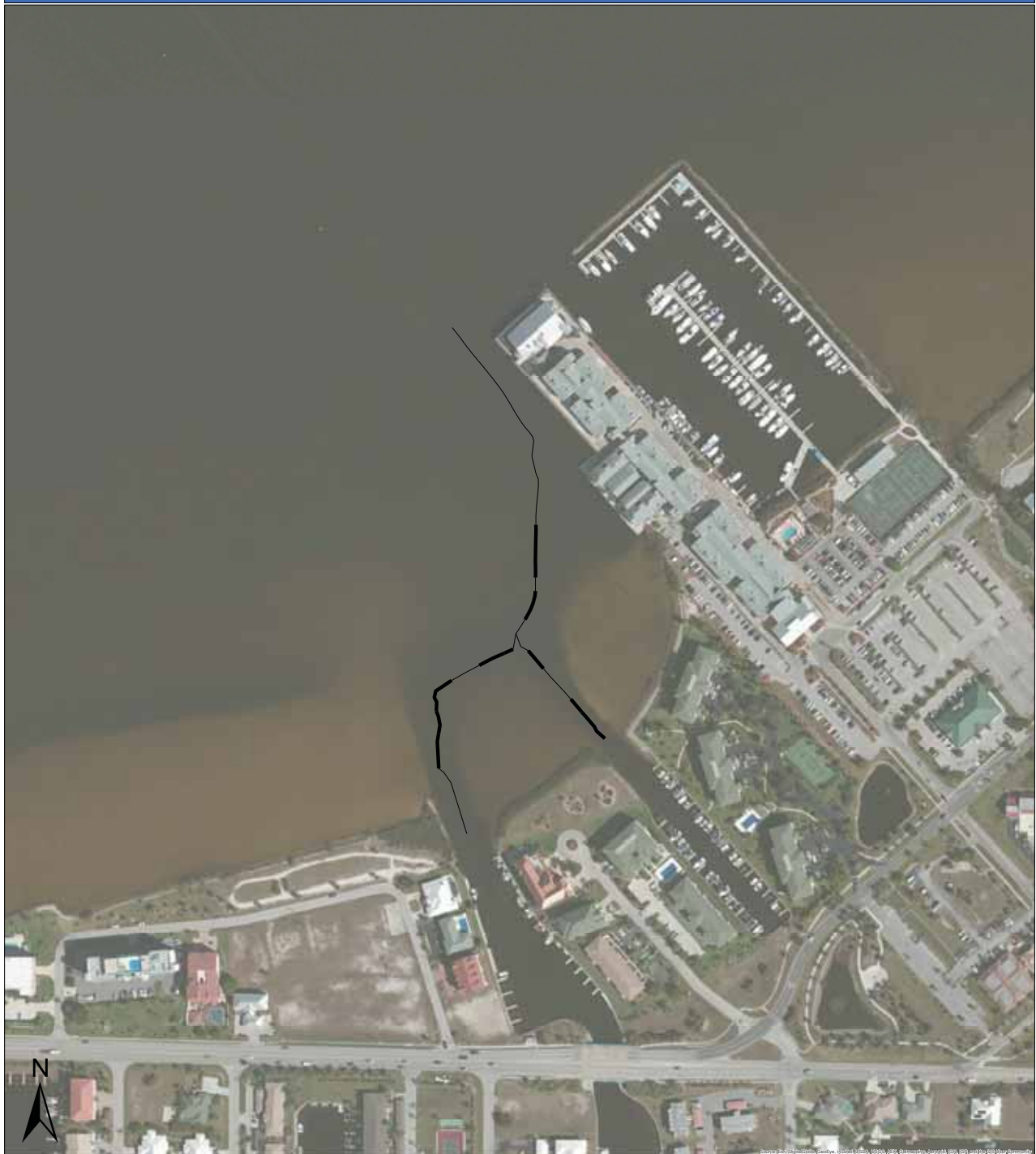
Only those channels belonging to the trafficked or secondary channel system are visible in the map.

Channel Restriction Category

- GP Dredging Not Anticipated
- GP Dredging Anticipated

Total GP channel length: 6,284 ft
 Anticipated dredge length: 2,388 ft
 Design Dredge Depth: 6.5 ft

Punta Gorda Isles -- Bass Inlet



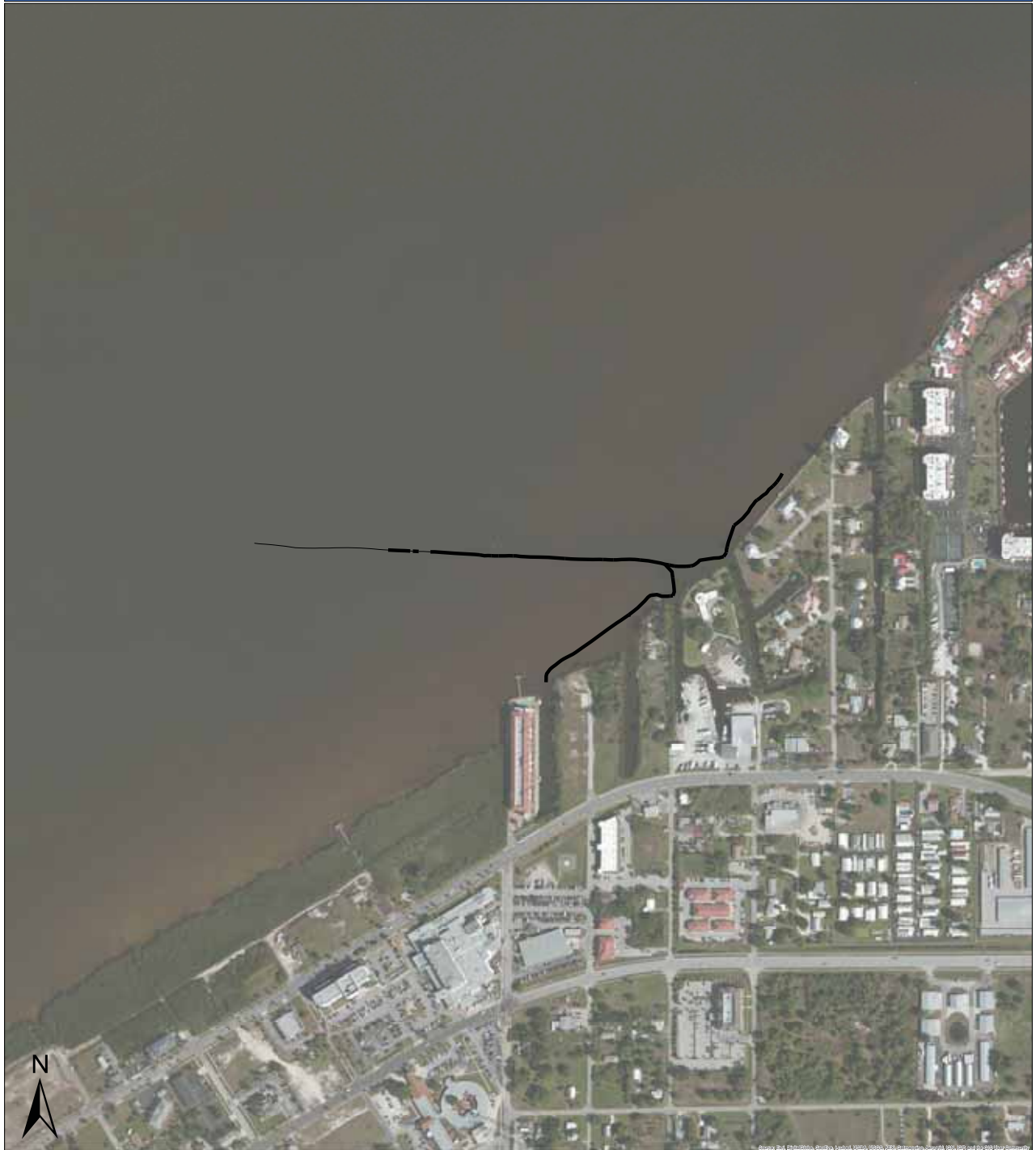
Only those channels belonging to the trafficked or secondary channel system are visible in the map.

Channel Restriction Category

- GP Dredging Not Anticipated
- GP Dredging Anticipated

Total GP channel length: 1,713 ft
 Anticipated dredge length: 689 ft
 Design Dredge Depth: 4.5 ft

Punta Gorda Marina



0 480 960 Feet

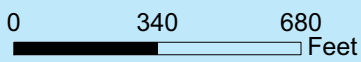
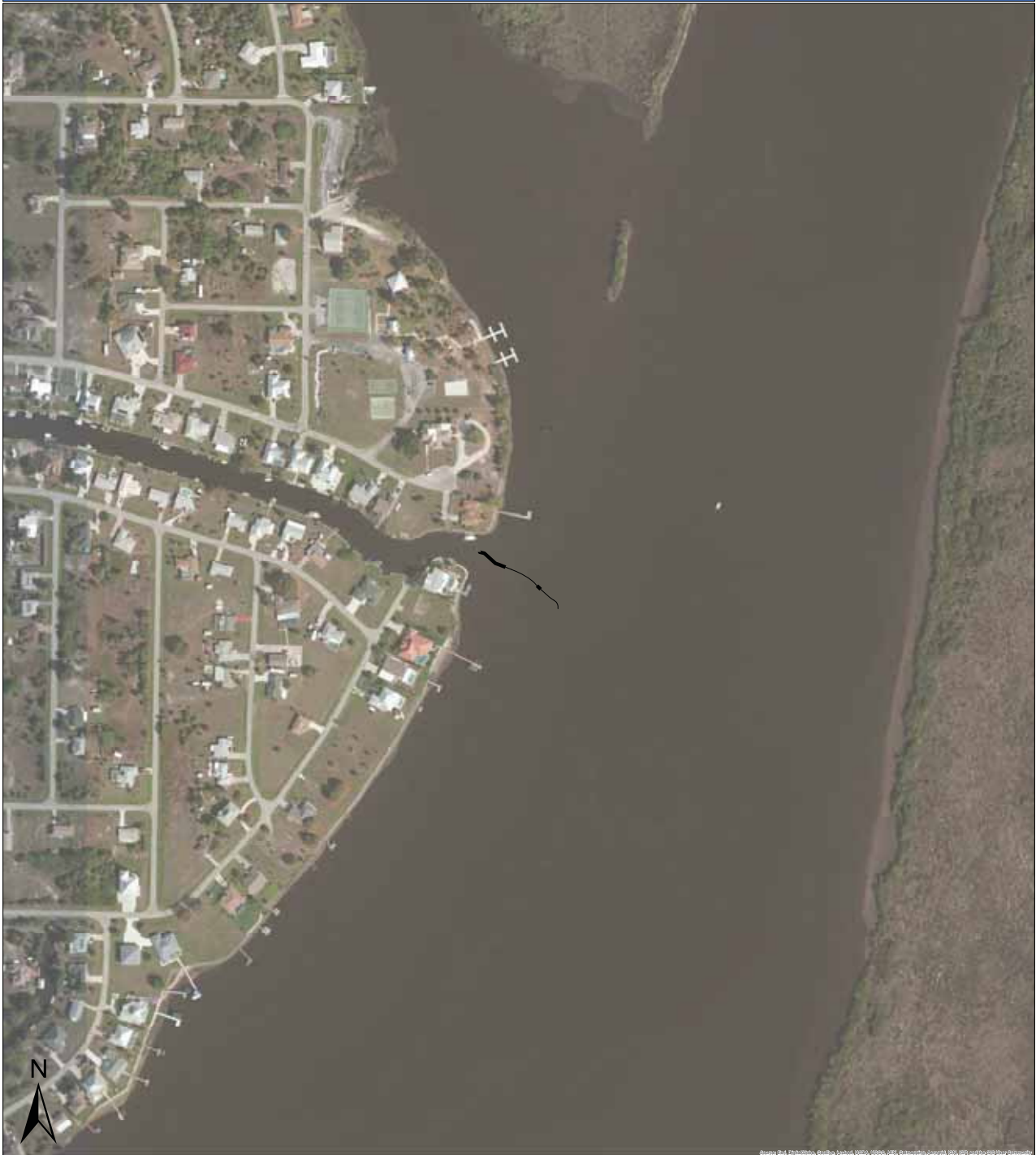
Only those channels belonging to the trafficked or secondary channel system are visible in the map.

Channel Restriction Category

- GP Dredging Not Anticipated
- GP Dredging Anticipated

Total GP channel length: 3,181 ft
 Anticipated dredge length: 2,573 ft
 Design Dredge Depth: 3.5 ft

San Marino Canal



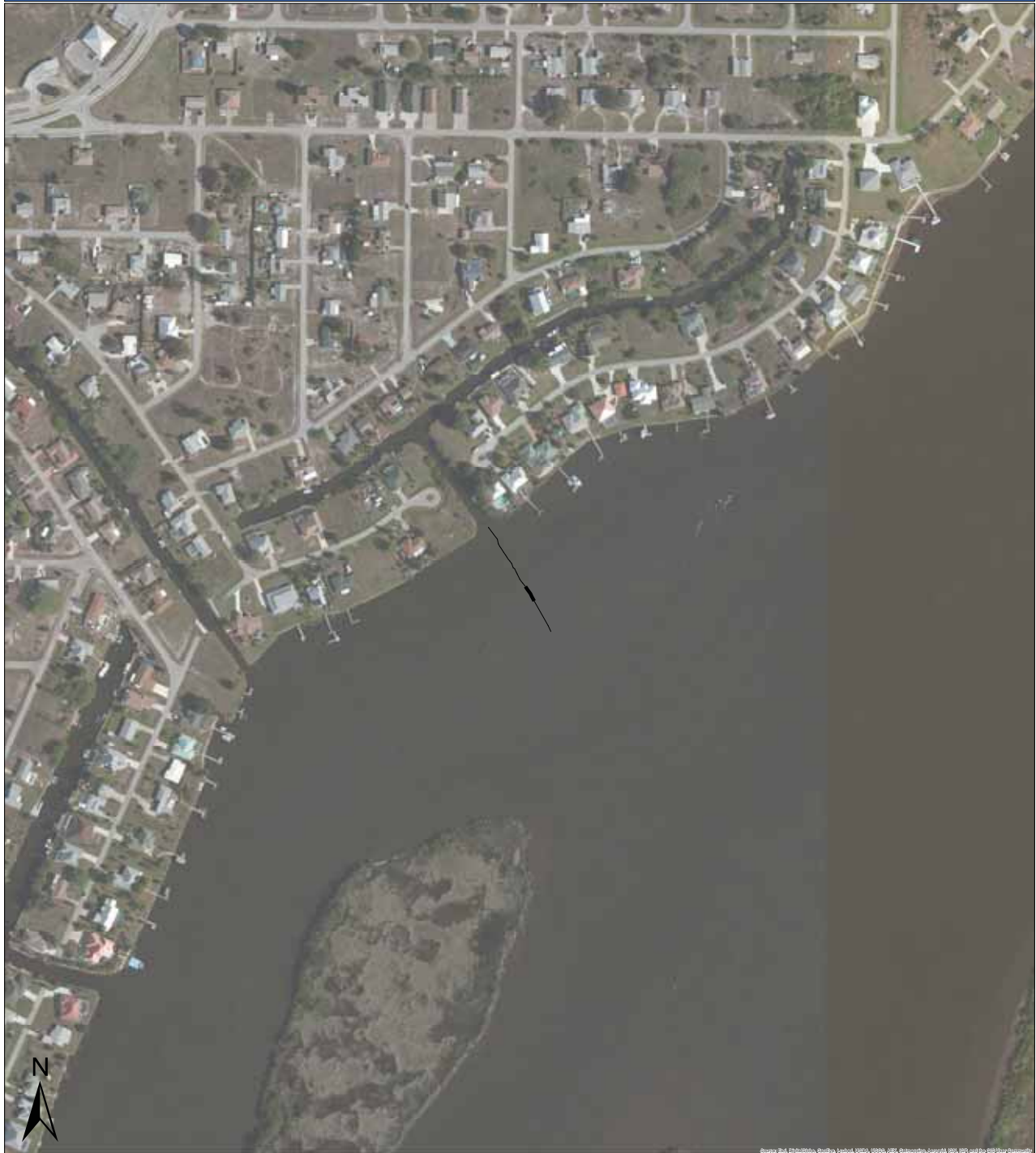
Only those channels belonging to the trafficked or secondary channel system are visible in the map.

Channel Restriction Category

- GP Dredging Not Anticipated
- GP Dredging Anticipated

Total GP channel length: 291 ft
 Anticipated dredge length: 104 ft
 Design Dredge Depth: 4.5 ft

San Salvador Canal



0 340 680
 Feet

Only those channels belonging to the trafficked or secondary channel system are visible in the map.

Channel Restriction Category

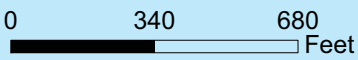
- GP Dredging Not Anticipated
- GP Dredging Anticipated

Total GP channel length: 358 ft
 Anticipated dredge length: 49 ft
 Design Dredge Depth: 4.5 ft

Santa Barbara Canal



Source: BNA, Earthstar, Santa Barbara, Ventura, 1998, 2000, 2001, 2002, 2003, 2004, 2005, 2006, 2007, 2008, 2009, 2010, 2011, 2012, 2013, 2014, 2015, 2016, 2017, 2018, 2019, 2020, 2021, 2022, 2023, 2024, 2025



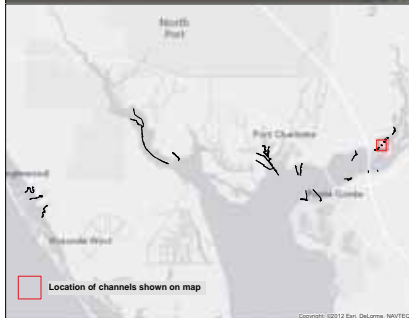
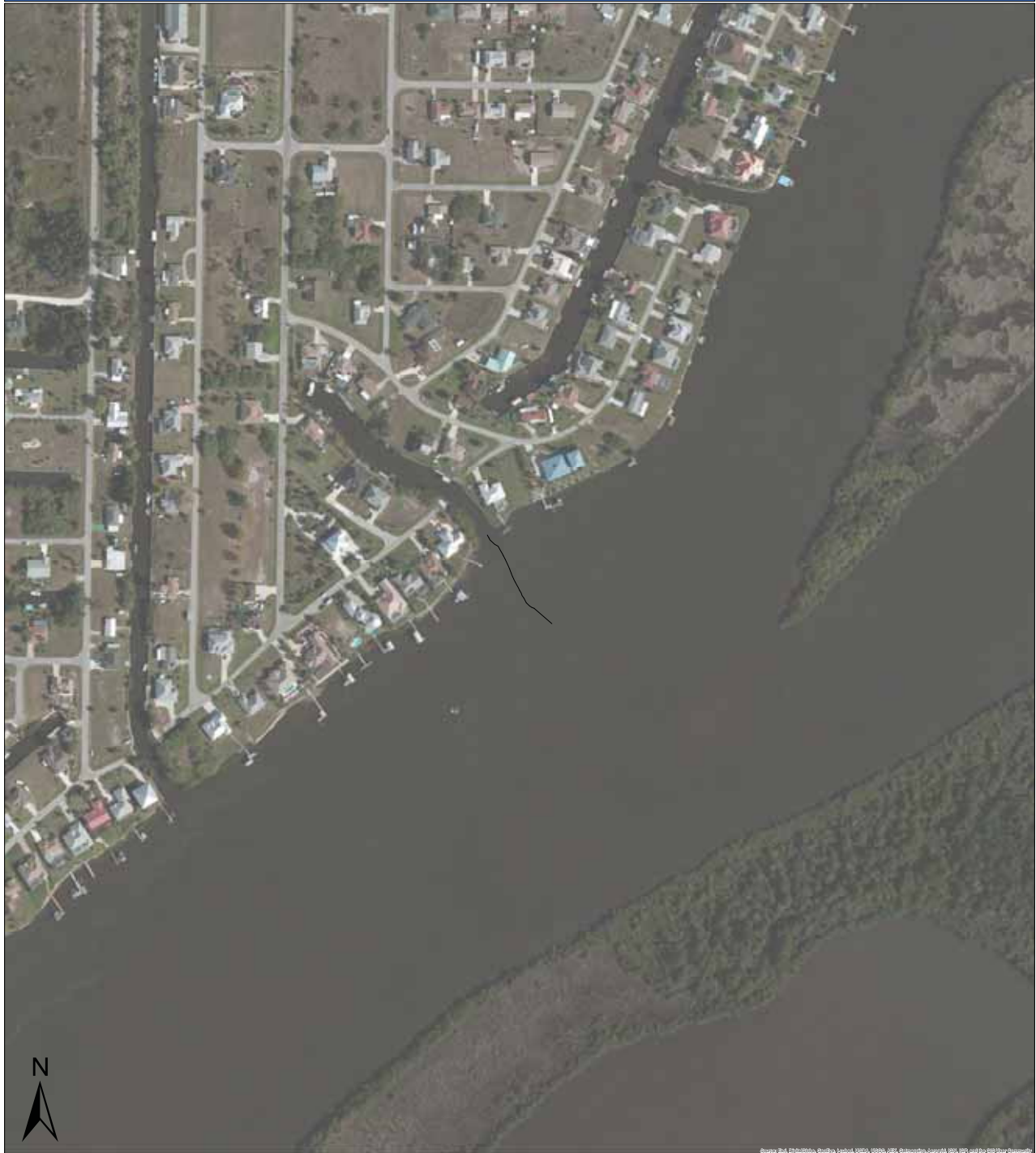
Only those channels belonging to the trafficked or secondary channel system are visible in the map.

Channel Restriction Category

- GP Dredging Not Anticipated
- GP Dredging Anticipated

Total GP channel length: 486 ft
 Anticipated dredge length: 24 ft
 Design Dredge Depth: 4.5 ft

Santa Clara Canal



0 340 680 Feet

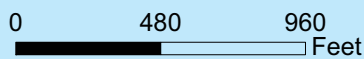
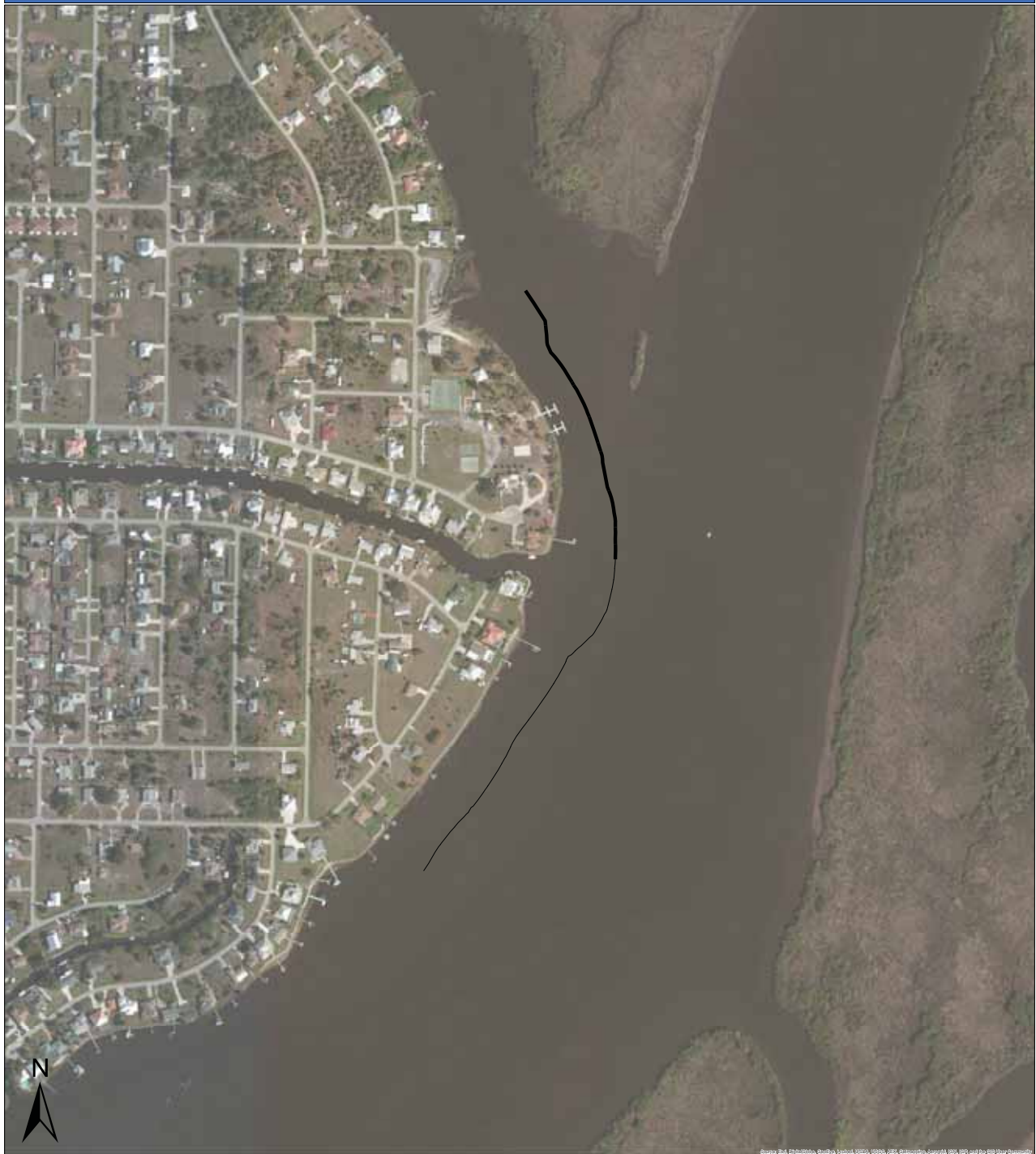
Only those channels belonging to the trafficked or secondary channel system are visible in the map.

Channel Restriction Category

- GP Dredging Not Anticipated
- GP Dredging Anticipated

Total GP channel length: 328 ft
 Anticipated dredge length: 0 ft
 Design Dredge Depth: 4.5 ft

Whidden Bay Secondary Channel



Only those channels belonging to the trafficked or secondary channel system are visible in the map.

Channel Restriction Category

- GP Dredging Not Anticipated
- GP Dredging Anticipated

Total GP channel length: 2,710 ft
 Anticipated dredge length: 1,186 ft
 Design Dredge Depth: 4.5 ft



Science Serving Florida's Coasts

Florida Sea Grant is committed to enhancing the practical use and conservation of coastal and marine resources to create a sustainable economy and environment.

Florida Sea Grant College Program
University of Florida
Gainesville, Florida 32611
(352) 392-5870
www.flseagrant.org