



Grid-independent high-resolution dust emissions (v1.0) for chemical transport models: application to GEOS-Chem (12.5.0)

Jun Meng^{1,2,a}, Randall V. Martin^{2,1,3}, Paul Ginoux⁴, Melanie Hammer^{2,1}, Melissa P. Sulprizio⁵, David A. Ridley⁶, and Aaron van Donkelaar^{1,2}

¹Department of Physics and Atmospheric Science, Dalhousie University, Halifax, Nova Scotia, B3H 4R2, Canada

²Department of Energy, Environmental & Chemical Engineering, Washington University in St. Louis, St. Louis, Missouri 63130, USA

³Smithsonian Astrophysical Observatory, Harvard-Smithsonian Center for Astrophysics, Cambridge, MA 02138, USA

⁴NOAA Geophysical Fluid Dynamics Laboratory, Princeton, New Jersey 08540, USA

⁵School of Engineering and Applied Science, Harvard University, Cambridge, MA 02138, USA

⁶California Environmental Protection Agency, Sacramento, CA 95814, USA

^anow at: Department of Atmospheric & Oceanic Sciences, University of California, 520 Portola Plaza, Los Angeles, California 90095, USA

Correspondence: Jun Meng (jun.meng@ucla.edu)

Received: 19 November 2020 – Discussion started: 11 December 2020

Revised: 24 May 2021 – Accepted: 10 June 2021 – Published: 6 July 2021

Abstract. The nonlinear dependence of the dust saltation process on wind speed poses a challenge for models of varying resolutions. This challenge is of particular relevance for the next generation of chemical transport models with nimble capability for multiple resolutions. We develop and apply a method to harmonize dust emissions across simulations of different resolutions by generating offline grid-independent dust emissions driven by native high-resolution meteorological fields. We implement into the GEOS-Chem chemical transport model a high-resolution dust source function to generate updated offline dust emissions. These updated offline dust emissions based on high-resolution meteorological fields strengthen dust emissions over relatively weak dust source regions, such as in southern South America, southern Africa and the southwestern United States. Identification of an appropriate dust emission strength is facilitated by the resolution independence of offline emissions. We find that the performance of simulated aerosol optical depth (AOD) versus measurements from the AERONET network and satellite remote sensing improves significantly when using the updated offline dust emissions with the total global annual dust emission strength of 2000 Tgy^{-1} rather than the standard online emissions in GEOS-Chem. The updated simulation also better represents in situ measurements from a global

climatology. The offline high-resolution dust emissions are easily implemented in chemical transport models. The source code and global offline high-resolution dust emission inventory are publicly available.

1 Introduction

Mineral dust, as one of the most important natural aerosols in the atmosphere, has significant impacts on weather and climate by absorbing and scattering solar radiation (Bergin et al., 2017; Kosmopoulos et al., 2017), on atmospheric chemistry by providing surfaces for heterogeneous reaction of trace gases (Chen et al., 2011; Tang et al., 2017), on the biosphere by fertilizing the tropical forest (Bristow et al., 2010; Yu et al., 2015) and ocean (Jickells et al., 2005; Guieu et al., 2019; Tagliabue et al., 2017), and on human health by increasing surface fine particulate matter ($\text{PM}_{2.5}$) concentrations (De Longueville et al., 2010; Fairlie et al., 2007; Zhang et al., 2013). Dust emissions are primarily controlled by surface wind speed to the third or fourth power, vegetation cover, and soil water content. The principal mechanism for natural dust emissions is saltation bombardment (Gillette and Passi, 1988; Shao et al., 1993), in which sand-sized par-

ticles creep forward and initiate the suspension of smaller dust particles when the surface wind exceeds a threshold. The nonlinear dependence of dust emissions on meteorology introduces an artificial dependence of simulations upon model resolution (Ridley et al., 2013). For example, dust emissions in most numerical models are parameterized with an empirical method (e.g., Ginoux et al., 2001; Zender et al., 2003), which requires a critical wind threshold to emit dust particles. Smoothing meteorological fields to coarse resolution can lead to wind speeds falling below the emission threshold in regions that do emit dust. Methods are needed to address the artificial dependence of simulations upon model resolution that arises from nonlinearity in dust emissions.

Addressing this nonlinearity is especially important for the next generation of chemistry transport models that is emerging with nimble capability for a variety of resolutions at the global scale. For example, the high-performance version of GEOS-Chem (GCHP) (Eastham et al., 2018) currently offers simulation resolutions that vary by over a factor of 100 from C24 ($\sim 4^\circ \times 4^\circ$) to C360 ($\sim 0.25^\circ \times 0.25^\circ$), with progress toward even finer resolution and toward a variable stretched grid capability (Bindle et al., 2020). Resolution-dependent mineral dust emissions would vary by a factor of 3 from C360 to C24 (Ridley et al., 2013). Such large resolution-dependent biases would undermine applications of CTMs to assess dust effects and would lead to large within-simulation inconsistency for stretched grid simulations that can span the entire resolution range simultaneously. Grid-independent high-resolution dust emissions offer a potential solution to this issue.

An important capability in global dust evaluation is ground-based and satellite remote sensing. The Aerosol Robotic Network (AERONET), a global ground-based remote sensing aerosol monitoring network of Sun photometers (Holben et al., 1998), has been widely used to evaluate dust simulations. Satellite remote sensing provides additional crucial information across arid regions where in situ observations are sparse (Hsu et al., 2013). Satellite aerosol retrievals have been used extensively in previous studies to either evaluate the dust simulation (Ridley et al., 2012, 2016) or constrain the dust emission budget (Zender et al., 2004). Satellite aerosol products have been used to identify dust sources worldwide (Ginoux et al., 2012; Schepanski et al., 2012; Yu et al., 2018), especially for small-scale sources (Gillette, 1999).

The objective of this study is to develop a method to mitigate the large inconsistency of total dust emissions across different resolutions of simulations by generating and archiving offline dust emissions using native high-resolution meteorological fields. We apply this method to the GEOS-Chem chemical transport model. As part of this effort, we implement an updated high-resolution satellite-identified dust source function into the dust mobilization module of GEOS-Chem to better represent the spatial structure of dust sources.

We apply this new capability to assess the source strength that best represents observations.

2 Materials and methods

2.1 Description of observations

We use both ground-based and satellite observations to evaluate our GEOS-Chem simulations. AERONET is a global ground-based remote sensing aerosol monitoring network of sun photometers with direct sun measurements every 15 min (Holben et al., 1998). We use Level 2.0 Version 3 data that have improved cloud screening algorithms (Giles et al., 2019). Aerosol optical depth (AOD) at 550 nm is interpolated based on the local Ångström exponent at the 440 and 670 nm channels.

Twin Moderate-Resolution Imaging Spectroradiometer (MODIS) instruments aboard both the Terra and Aqua NASA satellite platforms provide near-daily measurements globally. We use the AOD at 550 nm retrieved from Collection 6.1 (C6) of the MODIS product (Sayer et al., 2014). We use AOD from the Deep Blue (DB) retrieval algorithm (Hsu et al., 2013; Sayer et al., 2014) designed for bright surfaces, and the Multi-Angle Implementation of Atmospheric Correction (MAIAC) algorithm (Lyapustin et al., 2018), which provides global AOD retrieved from MODIS C6 radiances at a resolution of 1 km. The MAIAC AOD used in this study is interpolated to the AOD value at 550 nm.

We use ground-based surface fine dust concentration measurements over the US from the Interagency Monitoring of Protected Visual Environments (IMPROVE, <http://vista.cira.colostate.edu/Improve/>, last access: 8 June 2020) network. The IMPROVE network provides 24 h average fine dust concentration data every third day over the national parks in the United States. We also include a climatology of dust surface concentration measurements over 1981–2000 from independent dust measurement sites across the globe (Kok et al., 2020). We use those sites (12 in total) (Fig. S1 in the Supplement) that are either in the dust belt across Northern Hemisphere or sites relatively close to the weak emission regions in the Southern Hemisphere to evaluate our dust simulation.

We compare the simulated AOD and dust concentrations with measurements using reduced major axis linear regression. We report root mean square error (E), correlation (R) and slope (M).

2.2 Dust mobilization module

We use the dust entrainment and deposition (DEAD) scheme (Zender et al., 2003) in the GEOS-Chem model to calculate dust emissions. The saltation process is dependent on the critical threshold wind speed, which is determined by surface roughness, soil type and soil moisture. Dust aerosol is transported in four size bins (0.1–1.0, 1.0–1.8, 1.8–3.0, and

3.0–6.0 μm radius). Detailed description of the dust emission parameterization is in Sect. S1 in the Supplement.

The fractional area of land with erodible dust is represented by a source function. The dust source function used in the dust emission module plays an important role in determining the spatial distribution of dust emissions. The standard GEOS-Chem model (version 12.5.0) uses a source function at $2^\circ \times 2.5^\circ$ resolution from Ginoux et al. (2001) as implemented by Fairlie et al. (2007). We implement an updated high-resolution version of the dust source function in this study at $0.25^\circ \times 0.25^\circ$ resolution (Sect. S2 in the Supplement). Figure S2 in the Supplement shows a map of the original and updated version of the dust source function. The updated source function exhibits more spatially resolved information due to its finer spatial resolution resulting in a higher fraction of erodible dust over in the eastern Arabian Peninsula, the Bodélé depression, and the central Asian deserts. The dust module dynamically applies this source function together with information on soil moisture, vegetation, and land use to calculate hourly emissions using the Harmonized Emissions Component (HEMCO) module described below.

2.3 Offline dust emissions at the native meteorological resolution

HEMCO (Keller et al., 2014) is a stand-alone software module for computing emissions in global atmospheric models. We run the HEMCO standalone version using native meteorological resolution ($0.25^\circ \times 0.3125^\circ$) data for wind speed, soil moisture, vegetation, and land use to archive the offline dust emissions at the same resolution as the meteorological data. The computational time required for calculating offline dust emission fluxes at $0.25^\circ \times 0.3125^\circ$ resolution is around 6 h for 1 year of offline dust emissions on a compute node with 32 cores on 2 Intel CPUs at 2.1 GHz. In this study, we generate two offline dust emission datasets at $0.25^\circ \times 0.3125^\circ$ resolution. One, referred to as the default offline dust emissions, uses the existing dust source function in the GEOS-Chem dust module; the other, referred to as the updated offline dust emissions, uses the updated dust source function implemented here. Both datasets are at the hourly resolution of the parent meteorological fields. The archived native-resolution offline dust emissions can be conservatively regridded to coarser resolution for consistent input to chemical transport models at multiple resolutions. We use the GEOS-Chem model to evaluate the dust simulations and the emission strength.

2.4 GEOS-Chem chemical transport model and simulation configurations

GEOS-Chem (Bey et al., 2001; The International GEOS-Chem User Community, 2019) is a three-dimensional chemical transport model driven by assimilated meteorological data from the Goddard Earth Observation System (GEOS)

of the NASA Global Modelling and Assimilation Office (GMAO). The GEOS-Chem aerosol simulation includes the sulfate–nitrate–ammonium (SNA) aerosol system (Fountoukis and Nenes, 2007; Park et al., 2004), carbonaceous aerosol (Hammer et al., 2016; Park et al., 2003; Wang et al., 2014), secondary organic aerosols (Marais et al., 2016; Pye et al., 2010), sea salt (Jaeglé et al., 2011) and mineral dust (Fairlie et al., 2007) with updates to aerosol size distribution (Ridley et al., 2012; Zhang et al., 2013). Aerosol optical properties are based on the Global Aerosol Data Set (GADS) as implemented by Martin et al. (2003) for externally mixed aerosols as a function of local relative humidity with updates based on measurements (Drury et al., 2010; Latimer and Martin, 2019). Wet deposition of dust, including the processes of scavenging from convection and large-scale precipitation, follows Liu et al. (2001). Dry deposition of dust includes the effects of gravitational settling and turbulent resistance to the surface, which are represented with deposition velocities in the parameterization, implemented into GEOS-Chem by Fairlie et al. (2007).

The original GEOS-Chem simulation used online dust emissions by coupling the dust mobilization module online. We develop the capability to use offline dust emissions based on the archived fields described in Sect. 2.3. We conduct global simulations with GEOS-Chem (version 12.5.0) at a horizontal resolution of 2° by 2.5° for the year 2016. Simulations using the online and offline dust emissions are conducted to evaluate the offline dust emissions. We conduct two simulations using online dust emissions with different dust source functions. The first is with the original version of the dust source function, hereafter noted as the original online dust simulation. The other is with the updated version of source function, in which the updated fine-resolution source function is interpolated to 2° by 2.5° resolution. The annual total emissions for the online dust emissions are at the original value of 909 Tg yr^{-1} . We conduct another four sets of simulations using offline dust emissions. The first uses the default offline dust emissions with annual total dust emission of 909 Tg yr^{-1} . The remaining sets use the updated offline dust emissions with the annual total dust emission scaled to 1500, 2000 and 2500 Tg yr^{-1} , which are in the range of the current dust emission estimates of over $514\text{--}4313 \text{ Tg yr}^{-1}$ (Huneeus et al., 2011). We focus on the simulation with 2000 Tg yr^{-1} , which better represents observations as will be shown below.

3 Results and discussion

3.1 Spatial and seasonal variation of the offline dust emissions

Figure 1 shows the spatial distribution of the annual and seasonal dust emission flux rate for the updated offline dust emissions. The annual dust emission flux rate is high over

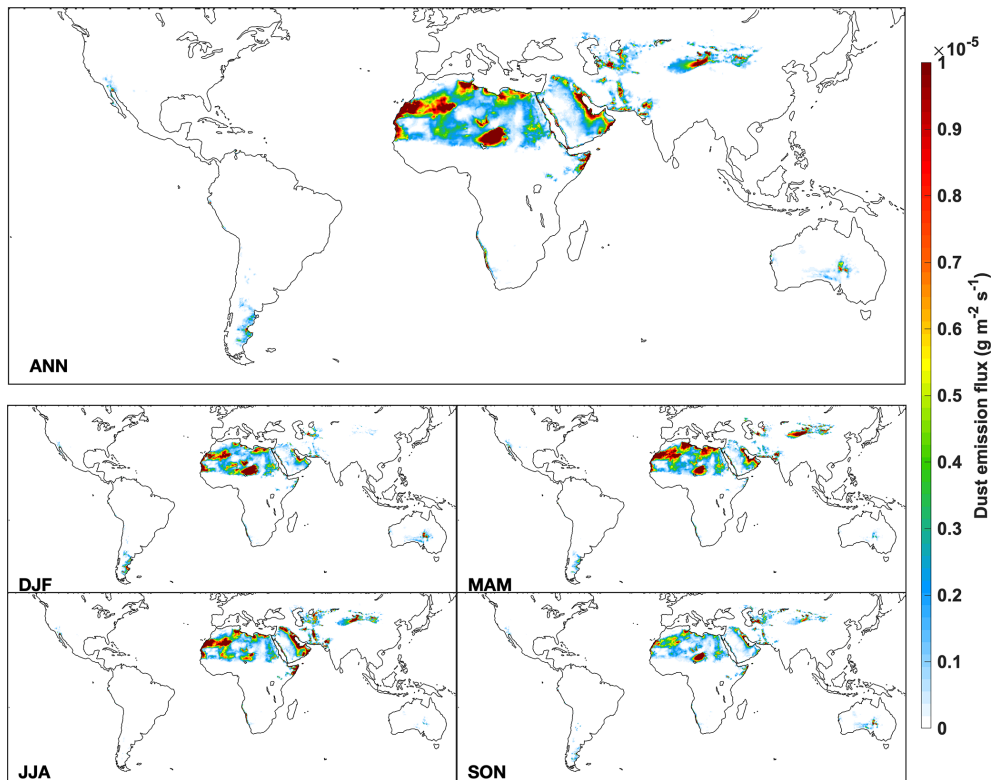


Figure 1. Annual and seasonal mean dust emission flux rate for the offline high-resolution dust emissions with updated dust source function and updated annual total dust emission of 2000 Tg.

major deserts, such as the northwestern Sahara, the Bodélé Depression in northern Chad, the eastern Arabian Peninsula, and central Asian Taklimakan and Gobi deserts. There are also hotspots of dust emission flux rate over relatively smaller deserts, such as the Mojave Desert of the southwestern United States, the Atacama desert of southern South America, the Kalahari desert on the west coast of southern Africa and the deserts of central Australia. Those features reflect the fine resolution of the updated dust source function and of the offline dust emissions. Seasonally, the dust emission flux rate resembles the annual distribution, but with a lower dust emission flux rate over the Bodélé Depression in northern Chad in summer and higher dust emission flux rate over the Middle East and central Asian deserts in spring and summer.

Figure 2 shows the spatial distribution of the annual dust emission flux rate for the online and offline dust emissions with the original and updated dust source functions with original and updated global total dust source strengths. All simulations exhibit high dust emission flux rates over major desert regions, such as the North African, Middle Eastern and central Asian deserts, with local enhancements over the western Sahara and northern Chad. The simulation with the updated source function exhibits stronger emissions in the Sahara and Persian Gulf regions (Fig. 2c). The difference between the online and offline dust emissions, shown

in Fig. 2f, can be considered the error in the online approach arising from coarse-resolution meteorological fields. The offline dust emissions based on native-resolution meteorological fields have lower dust emission flux rates over northwest Africa, but higher dust emission flux rates over the Middle East and central Asia. Higher annual dust emission flux rates over the southwestern United States, southern South America, the west coast of southern Africa and central Australia in the offline dust emissions reflect that the native-resolution offline dust emissions are strengthened over relatively weaker dust emission regions. Generally, coastal and minor desert regions emit more dust when calculating emissions at the native meteorological resolution.

Figures S3–S6 in the Supplement show the seasonal variations of dust emission flux rates for online and offline emissions. The offline dust emissions have lower emission flux rates than the online dust emissions during spring (March, April and May) (MAM) and winter (December, January and February) (DJF) over North Africa. The offline dust emission flux rate is higher than the online dust emission flux rate over the Middle East and central Asian deserts during spring and summer (June, July and August) (JJA). Emission flux rates are low over central Asian deserts during winter. The strengthening of offline dust emissions over weaker dust-emitting regions persists throughout all seasons.

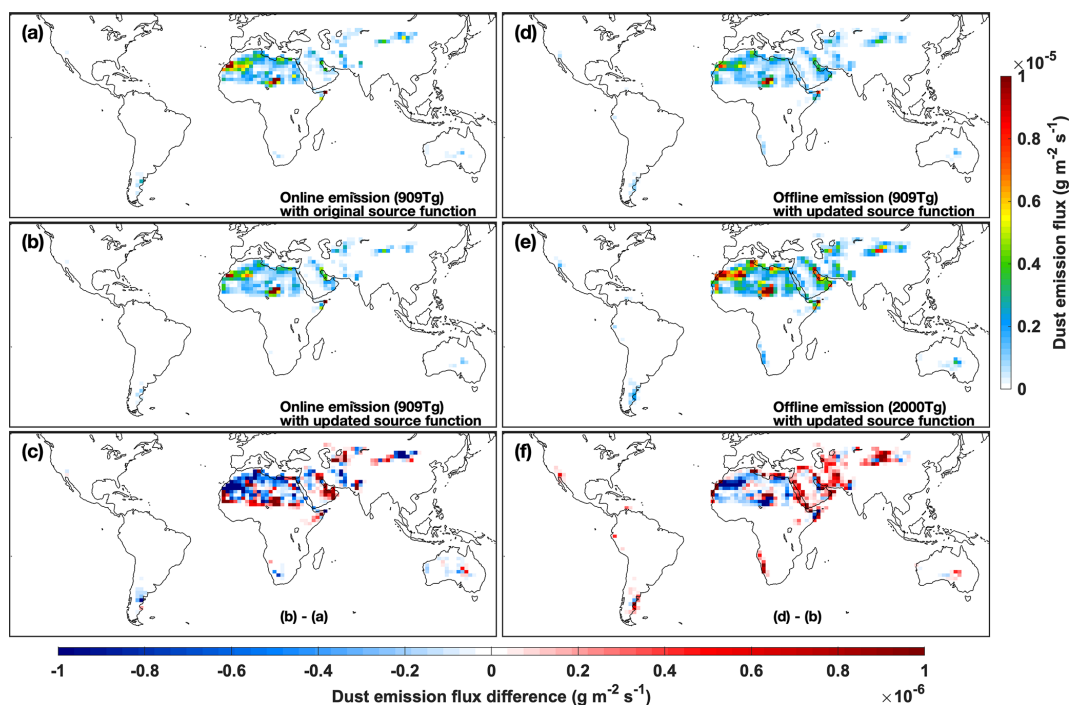


Figure 2. Annual mean dust emission flux rate for 2016. (a) The original online dust emissions with original dust source function and annual total dust emissions of 909 Tg. (b) Online dust emissions with updated dust source function. (c) Difference of flux rate between online dust emissions using original and updated dust source functions. (d) Offline dust emissions with updated dust source function. (e) Offline dust emissions with updated dust source function and updated annual total dust emissions of 2000 Tg. (f) Difference of flux rate between offline and online dust emissions. The online dust emissions are in $2^\circ \times 2.5^\circ$ resolution. The offline dust emissions shown in (b, d, f) are regridded from $0.25^\circ \times 0.3125^\circ$ resolution to $2^\circ \times 2.5^\circ$ for comparison with online dust emissions.

3.2 The performance of AOD simulations over desert regions

Figure 3 shows simulated AOD using the updated offline dust emissions. Difference maps of simulated AOD between online and offline dust emissions are shown in Fig. S7 in the Supplement. We select for evaluation the AERONET sites where the ratio of simulated dust optical depth (DOD) to simulated total AOD exceeds 0.5 in the simulation using the updated offline dust emissions with annual dust strength of 2000 Tg. Annually, the simulated DOD has the highest value over the Bodélé Depression. This feature persists in all seasons except summer, when DOD has the highest values over the western Sahara and eastern Arabian Peninsula. The scatter plots show that annually the simulated AOD from both simulations are highly correlated with AERONET measurements across the dust regions ($R = 0.86\text{--}0.88$). The simulation with updated offline dust emissions has an improved slope and smaller root mean square error than the simulation using the original online dust emissions. AOD from the simulation with updated offline dust emissions is also more consistent with the measurements in different seasons, especially in the spring (MAM) and fall (SON) with slopes close to unity and R exceeding 0.9.

We further evaluate the performance of simulated AOD over major desert regions using the MODIS DB and MAIAC AOD products. Figure 4 shows annual and seasonal scatter plots comparing GEOS-Chem-simulated AOD using original online dust emissions and updated offline dust emissions against retrieved AOD from MODIS DB and MAIAC satellite products over the three major desert regions outlined in Fig. 3. Figure S8 in the Supplement shows the annual and seasonal AOD distribution from MODIS DB and MAIAC. Annually, the simulation using updated offline dust emissions exhibits greater consistency with satellite AOD than the simulation using original online dust emissions across all three desert regions. The simulation using updated offline dust emission performs better across all three desert regions and in all four seasons except for North Africa in summer, during which AOD is overestimated. Both simulations underestimate AOD over central Asian deserts during winter, when dust emissions are low and other sources may be more important. Overall, the simulation using original online dust emissions underestimates AOD over all three major desert regions, especially over the Middle East and central Asian deserts. The simulation using updated offline dust emissions exhibits greater consistency with satellite observations with higher slopes and correlations.

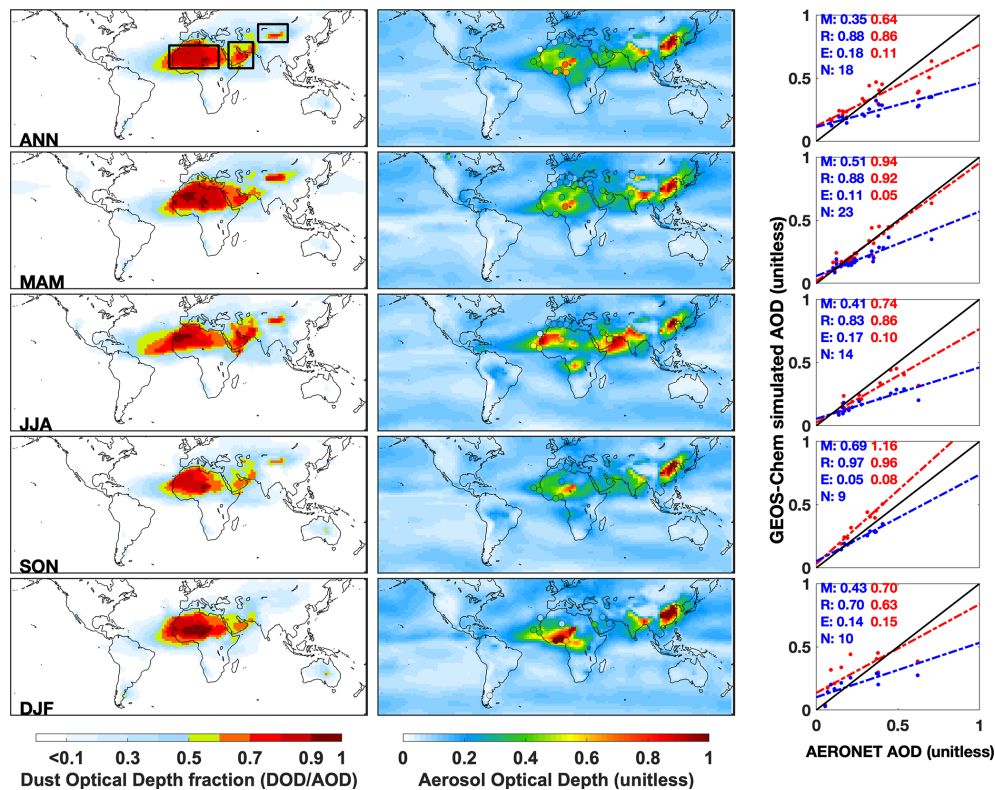


Figure 3. Annual and seasonal mean simulated dust optical depth (DOD) fraction (left column) and aerosol optical depth (AOD) (middle column) from GEOS-Chem simulations for 2016, and AERONET measured AOD at sites where the ratio of simulated DOD and AOD exceeds 0.5, which are shown as filled circles in the middle column. Boxes in the left top panel outline the three major deserts examined in Fig. 4. The right column shows the corresponding scatter plot with root mean square error (E), correlation coefficient (R) and slope (M) calculated with reduced major axis linear regression. N is the number of valid ground-based monitoring records. The results for the simulation using the original dust emissions are shown in blue; the results for the simulation using updated dust emissions with dust strength of 2000 Tg yr^{-1} are shown in red. The best-fit lines are dashed. The 1 : 1 line is solid.

3.3 Evaluation of the simulations against surface dust concentration measurements

We also evaluate our simulations using different dust emissions against measurements of surface dust concentrations. Figure 5 shows the comparison of modeled fine dust surface concentration against the fine dust concentration observation from the IMPROVE network. The simulations using the updated offline dust emissions can better represent the observed surface fine dust concentration measurements than the simulation using the original online dust emissions with higher correlations and slopes across all seasons. Annually, the correlation between the simulation and observation increases from 0.39 to 0.68, and the slope increases from 0.31 to 0.71 when using the updated offline dust emissions with annual dust strength of 909 Tg compared to the simulation using the original online dust emissions. Scaling the annual dust strength to 2000 Tg yr^{-1} marginally improves the performance of the model simulation of fine dust concentrations in all seasons except winter, during which the surface fine dust concentrations are overestimated. Given the specificity

and density of the dust measurements, and the disconnect of North American dust emissions from the global source, we conduct an additional sensitivity simulation with North American dust emissions reduced by 30 %. The right column shows that the annual slope in the resultant simulation versus observations improves to 1.07, minor improvements to annual and seasonal correlations. Future efforts should focus on better representing the seasonal variation of dust emissions.

Figure 6 shows the comparison of seasonally averaged modeled and measured surface dust concentrations from 12 independent sites across the globe. The simulation using the updated offline dust emissions with dust strength of 2000 Tg yr^{-1} is more consistent with the observations at almost all sites. The remaining bias at sites distant from source regions, for example sites in the Southern Hemisphere and East Asia, likely reflects the remaining uncertainty in representing dust deposition. Further research is needed to address the remaining knowledge gaps, such as better representing the dust size distribution and deposition during transport.

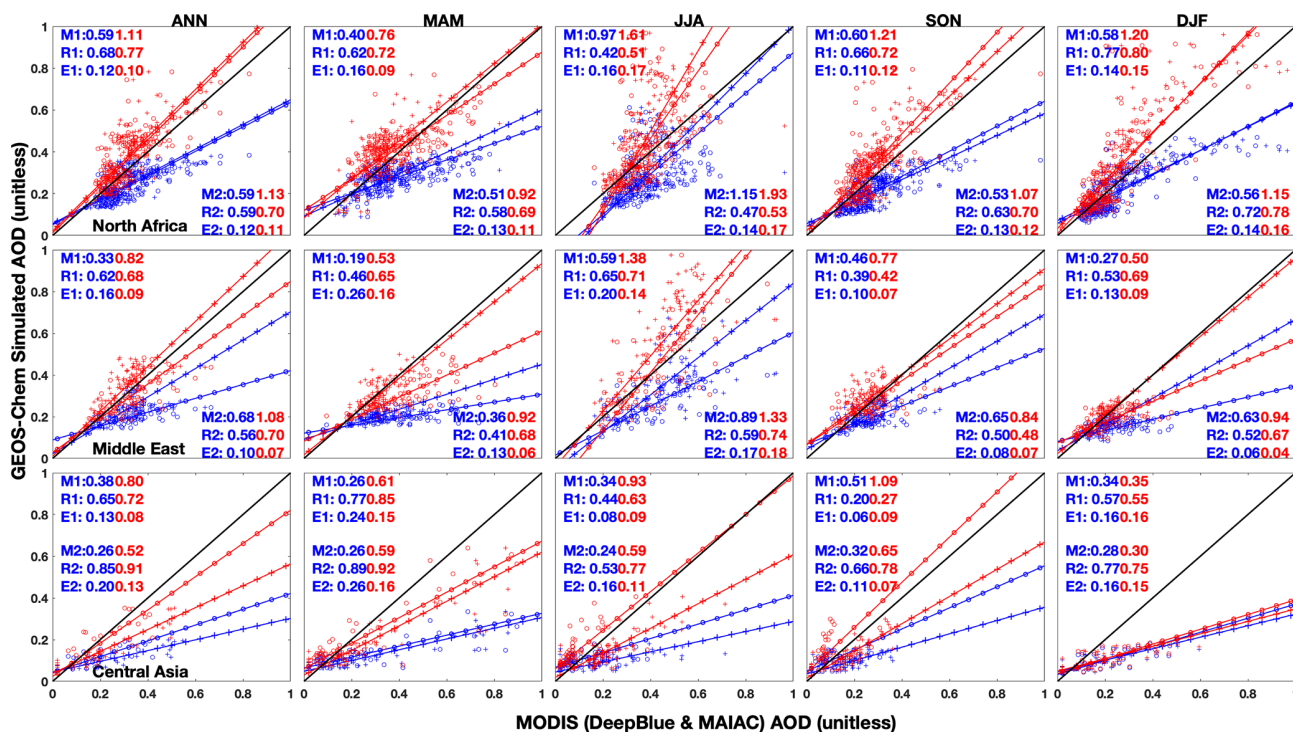


Figure 4. Scatter plots and statistics of comparing GEOS-Chem simulated AOD with satellite AOD over desert regions annually (the first column) and seasonally (the right four columns). The results for the North African, Middle Eastern and central Asian deserts are shown in the top, middle and bottom rows, respectively. The results for the simulation using the original dust emissions are shown in blue; the results for the simulation using updated dust emissions with dust strength of 2000 Tg yr^{-1} are shown in red. Open circles represent the comparison with MODIS Deep Blue AOD; the plus signs represent the comparison with MAIAC AOD. Correlation coefficient (R), root mean square error (E) and slope (M) are reported, in which R1, E1 and M1 show the results of the comparison with MODIS Deep Blue AOD; R2, E2 and M2 show the results of the comparison with MAIAC AOD. The best-fit lines are dashed lines with corresponding marker signs and colors. The 1 : 1 line solid black line.

3.4 Discussion of the dust source strength

One of the advantages of the offline dust emissions is that the same dust source strength can be readily applied to all model resolutions, facilitating evaluation of dust source strength independent of resolution. We have found that the simulation with global total annual dust emission scaled to 2000 Tg better represents observations than the default simulation with global total annual dust emissions of 909 Tg . We also evaluate simulations with global total annual dust emission scaled to 1500 and 2500 Tg . Figure S9 in the Supplement indicates that the simulation with global total annual dust emission scaled to 2000 Tg is more consistent with satellite observations over North Africa and the Middle East. Although the central Asian deserts and regions with AERONET observations (Fig. S10 in the Supplement) are better represented by the simulation with global total annual dust emission scaled to 2500 Tg , since North Africa has the highest dust emissions (Huneeus et al., 2011), and AOD over North Africa is most likely dominated by dust, we scale global total annual dust emissions to best match this source region robustly. We refrain from applying a regional-scale factor to the cen-

tral Asian deserts given the paucity of in situ measurements. More dust-specific observations are needed to constrain dust emissions for the Asian deserts region and other deserts. Additional development and evaluation should be conducted to further narrow the uncertainty of dust emissions, especially at the regional scale.

Although the main purpose of this paper is to develop and evaluate an offline grid-independent inventory, it is worth noting that online models have the capability to scale to a target source strength. In that context the global source strength identified here may be of use for global online models to scale to the global source strength, with the caveat that differences in dust parameterization, dust optics and deposition may affect performance.

3.5 Advantages of high-resolution offline dust emissions for model development

Uncertainty remains in the estimated global annual total dust emissions. Direct dust emission flux observations are few. Current atmospheric models apply a global-scale factor to optimize with a specific set of ground observations.

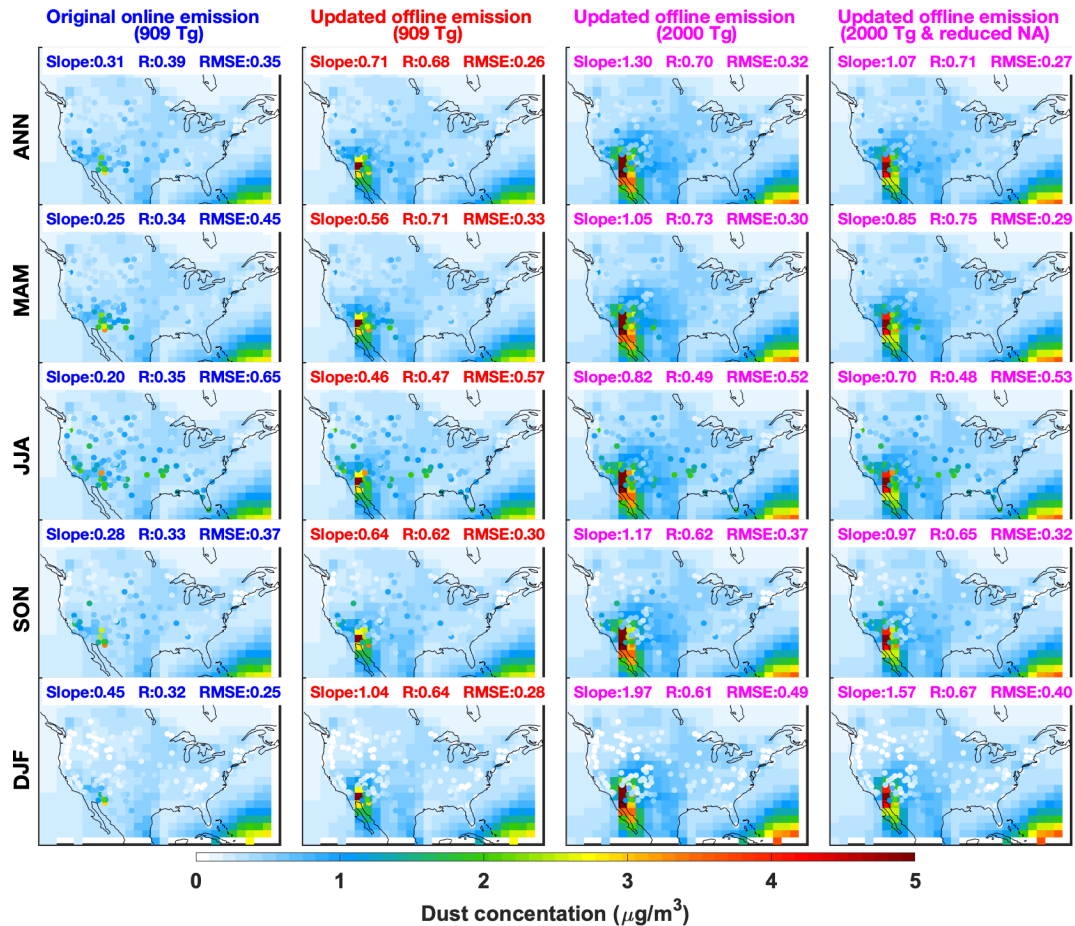


Figure 5. Annual and seasonal mean simulated fine dust concentrations from GEOS-Chem simulations with different dust emissions for 2016, and IMPROVE fine dust measurements, which are shown as filled circles. Root mean square error (E), correlation coefficient (R) and slope (M) calculated with reduced major axis linear regression are reported. The results for the simulation using the original dust emissions are shown in blue (left column). The results for the simulation using updated dust emissions with dust strength of 909 Tg yr^{-1} are shown in red (second column). The results for the simulation using updated dust emissions with dust strength of 2000 Tg yr^{-1} are shown in magenta (third column). The right column is the sensitivity simulation with North America dust emission reduced by 30 %.

Because of the non-linear dependence on resolution of the dust emissions, the source strength has historically depended upon model resolution, which inhibits general evaluation. The native-resolution offline dust emissions facilitate consistent evaluation and application across all model resolutions. Such consistency is particularly important for stretched-grid simulations with the capability for variation in resolution by factors of over 100 within a single simulation (Bindle et al., 2020).

4 Summary and conclusions

The nonlinear dependence of dust emission parameterizations upon model resolution poses a challenge for the next generation of chemical transport models with nimble capability for multiple resolutions. The method explored here to calculate offline dust emissions at native meteorological res-

olution promotes consistency of dust emissions across different model resolutions. We take advantage of the capability of the HEMCO standalone module to calculate dust emission offline at native meteorological resolution using the DEAD dust emission scheme combined with an updated high-resolution dust source function. We evaluate the performance of the simulation with native-resolution offline dust emissions and an updated dust source function with source strength of 2000 Tg yr^{-1} . We find better agreement with measurements, including satellite and AERONET AOD, and surface dust concentrations. The offline fine-resolution dust emissions strengthen the dust emissions over smaller desert regions. The independence of source strength from simulation resolution facilitates evaluation with observations. Sensitivity simulations with an annual global source strength of either 1500 or 2500 Tg generally degraded the performance. A sensitivity simulation with North American emissions re-

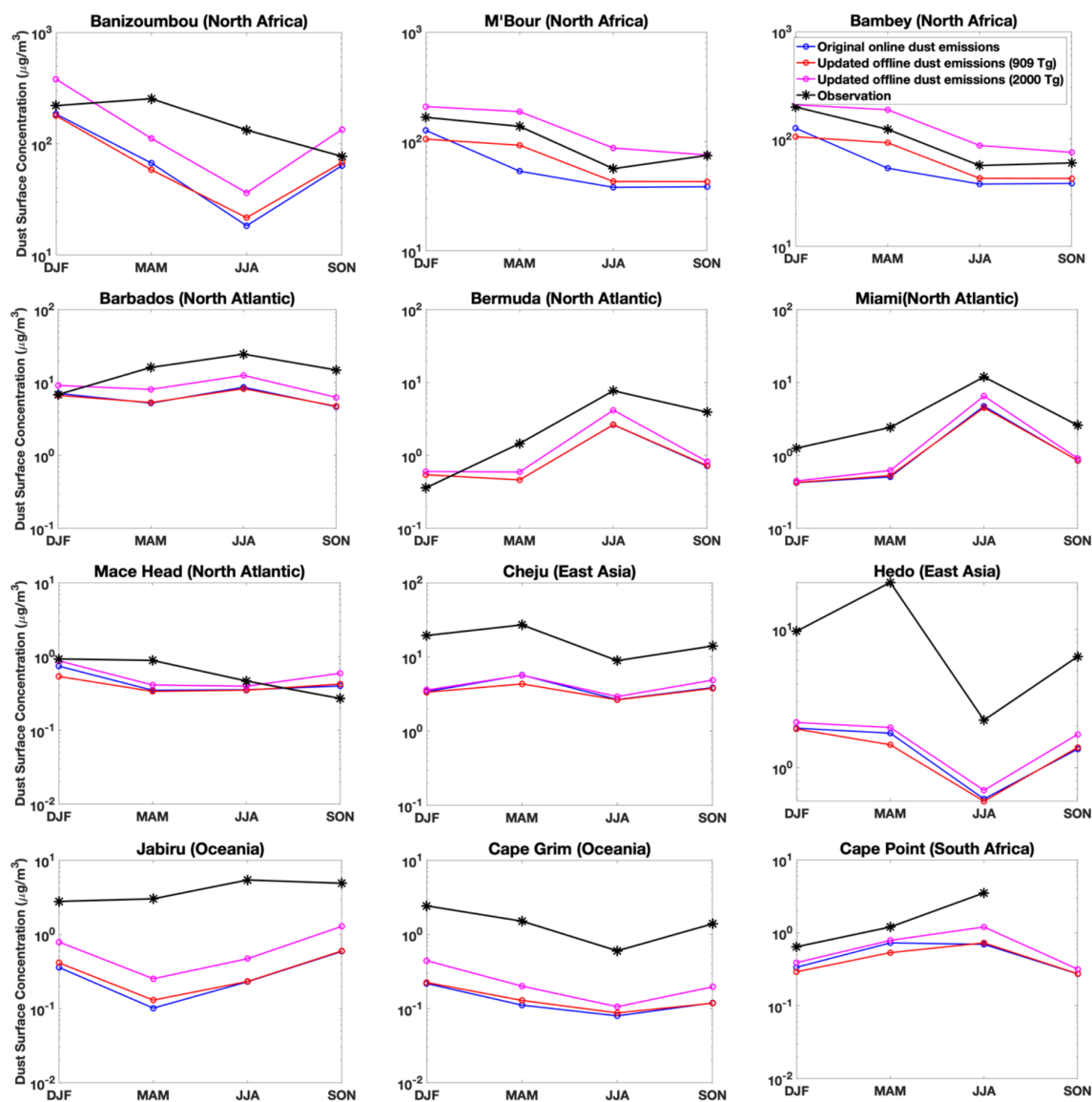


Figure 6. Comparison of modeled and measured seasonally averaged surface dust concentrations at 12 independent globally distributed sites for the years 1981–2000. Nine sites are in the dust belt across Northern Hemisphere. The remaining 3 sites are relatively close to the weak dust emission regions in Southern Hemisphere. The results for the simulation using the original dust emissions are shown in blue. The results for the simulation using updated dust emissions with dust strength of 909 Tg yr^{-1} are shown in red. The results for the simulation using updated dust emissions with dust strength of 2000 Tg yr^{-1} are shown in magenta. The measurements are in black.

duced by 30 % improved the annual mean slope versus observations. Future work should continue to develop and evaluate the representation of dust deposition and regional seasonal variation.

Code and data availability. The source code for generating the offline dust emissions is available on GitHub (<https://github.com/Jun-Meng/geos-chem/tree/v11-01-Patches-UniCF-vegetation>, last access: 8 November 2020) and in a Zenodo repository (<https://doi.org/10.5281/zenodo.4062003>) (Meng et al., 2020b). The instructions on how to generate the emission files are in the

README.md file in the GitHub repository. The global high-resolution ($0.25^\circ \times 0.3125^\circ$) dust emission inventory is available on Zenodo (<https://doi.org/10.5281/zenodo.4060248>, Meng et al., 2020a), containing NetCDF format files of the global gridded hourly mineral dust emission flux rate. Currently, the dataset (version 1.0) is available for the year 2016. The dataset for other years since 2014 will be available in future versions.

The base GEOS-Chem source code in version 12.5.0 is available on GitHub (<https://github.com/geoschem/geos-chem/tree/12.5.0>, last access: 8 November 2020) and in a Zenodo repository (<https://doi.org/10.5281/zenodo.3403111>, The International GEOS-Chem User Community, 2019). The GEOS-Chem simulation out-

put data and AOD observations used to evaluate the model performance, including MODIS Deep Blue, MODIS MAIAC and AERONET AOD, can be accessed via this Zenodo repository (<https://doi.org/10.5281/zenodo.4312944>) (Meng et al., 2020c).

Supplement. The supplement related to this article describes the details of the dust emission scheme used in this project, the updated high-resolution dust source function and additional figures described in the main text. The supplement related to this article is available online at: <https://doi.org/10.5194/gmd-14-4249-2021-supplement>.

Author contributions. RVM and JM conceived the project. JM developed the dust emission dataset using data and algorithms from DAR, PG, MH, AvD, and MPS. JM prepared the paper with contributions from all coauthors. All authors helped revise the paper.

Competing interests. The authors declare that they have no conflict of interest.

Disclaimer. Publisher's note: Copernicus Publications remains neutral with regard to jurisdictional claims in published maps and institutional affiliations.

Acknowledgements. Jun Meng was partially supported by a Nova Scotia Research and Innovation Graduate Scholarship. Randall V. Martin acknowledges partial support from NASA AIST-18-0011. We are grateful to Compute Canada and Research Infrastructure Services in Washington University in St. Louis for computing resources. The meteorological data (GEOS-FP) used in this study have been provided by the Global Modeling and Assimilation Office (GMAO) at NASA Goddard Space Flight Center. We thank Jasper Kok and Longlei Li for providing the compilation of independent surface dust concentrations measurements. We thank the four anonymous reviewers for their constructive comments and suggestions. All figures were produced with the MATLAB software.

Financial support. This research has been supported by the Natural Sciences and Engineering Research Council of Canada, Discovery Grant (grant no. RGPIN-2019-04670), and the National Aeronautics and Space Administration Science Mission Directorate (grant no. AIST-18-0011).

Review statement. This paper was edited by Havala Pye and reviewed by four anonymous referees.

References

Bergin, M. H., Ghoroi, C., Dixit, D., Schauer, J. J., and Shindell, D. T.: Large Reductions in Solar Energy Production Due to Dust

and Particulate Air Pollution, *Environ. Sci. Tech. Lett.*, 4, 339–344, <https://doi.org/10.1021/acs.estlett.7b00197>, 2017.

Bey, I., Jacob, D. J., Yantosca, R. M., Logan, J. A., Field, B. D., Fiore, A. M., Li, Q., Liu, H. Y., Mickley, L. J., and Schultz, M. G.: Global modeling of tropospheric chemistry with assimilated meteorology: Model description and evaluation, *J. Geophys. Res.-Atmos.*, 106, 23073–23095, <https://doi.org/10.1029/2001JD000807>, 2001.

Bindle, L., Martin, R. V., Cooper, M. J., Lundgren, E. W., Eastham, S. D., Auer, B. M., Clune, T. L., Weng, H., Lin, J., Murray, L. T., Meng, J., Keller, C. A., Pawson, S., and Jacob, D. J.: Grid-Stretching Capability for the GEOS-Chem 13.0.0 Atmospheric Chemistry Model, *Geosci. Model Dev. Discuss.* [preprint], <https://doi.org/10.5194/gmd-2020-398>, in review, 2020.

Bristow, C. S., Hudson-Edwards, K. A., and Chappell, A.: Fertilizing the Amazon and equatorial Atlantic with West African dust, *Geophys. Res. Lett.*, 37, L14807, <https://doi.org/10.1029/2010GL043486>, 2010.

Chen, H., Navea, J. G., Young, M. A., and Grassian, V. H.: Heterogeneous Photochemistry of Trace Atmospheric Gases with Components of Mineral Dust Aerosol, *J. Phys. Chem. A*, 115, 490–499, <https://doi.org/10.1021/jp110164j>, 2011.

De Longueville, F., Hountondji, Y.-C., Henry, S., and Ozer, P.: What do we know about effects of desert dust on air quality and human health in West Africa compared to other regions?, *Sci. Total Environ.*, 409, 1–8, <https://doi.org/10.1016/j.scitotenv.2010.09.025>, 2010.

Drury, E., Jacob, D. J., Spurr, R. J. D., Wang, J., Shinzuka, Y., Anderson, B. E., Clarke, A. D., Dibb, J., McNaughton, C., and Weber, R.: Synthesis of satellite (MODIS), aircraft (ICARTT), and surface (IMPROVE, EPA-AQS, AERONET) aerosol observations over eastern North America to improve MODIS aerosol retrievals and constrain surface aerosol concentrations and sources, *J. Geophys. Res.-Atmos.*, 115, D14204, <https://doi.org/10.1029/2009JD012629>, 2010.

Eastham, S. D., Long, M. S., Keller, C. A., Lundgren, E., Yantosca, R. M., Zhuang, J., Li, C., Lee, C. J., Yannetti, M., Auer, B. M., Clune, T. L., Kouatchou, J., Putman, W. M., Thompson, M. A., Trayanov, A. L., Molod, A. M., Martin, R. V., and Jacob, D. J.: GEOS-Chem High Performance (GCHP v11-02c): a next-generation implementation of the GEOS-Chem chemical transport model for massively parallel applications, *Geosci. Model Dev.*, 11, 2941–2953, <https://doi.org/10.5194/gmd-11-2941-2018>, 2018.

Fairlie, T. D., Jacob, D. J., and Park, R. J.: The impact of transpacific transport of mineral dust in the United States, *Atmos. Environ.*, 41, 1251–1266, <https://doi.org/10.1016/j.atmosenv.2006.09.048>, 2007.

Fountoukis, C. and Nenes, A.: ISORROPIA II: a computationally efficient thermodynamic equilibrium model for K^+ – Ca^{2+} – Mg^{2+} – NH_4^+ – Na^+ – SO_4^{2-} – NO_3^- – Cl^- – H_2O aerosols, *Atmos. Chem. Phys.*, 7, 4639–4659, <https://doi.org/10.5194/acp-7-4639-2007>, 2007.

Giles, D. M., Sinyuk, A., Sorokin, M. G., Schafer, J. S., Smirnov, A., Slutsker, I., Eck, T. F., Holben, B. N., Lewis, J. R., Campbell, J. R., Welton, E. J., Korkin, S. V., and Lyapustin, A. I.: Advancements in the Aerosol Robotic Network (AERONET) Version 3 database – automated near-real-time quality control algorithm

- with improved cloud screening for Sun photometer aerosol optical depth (AOD) measurements, *Atmos. Meas. Tech.*, 12, 169–209, <https://doi.org/10.5194/amt-12-169-2019>, 2019.
- Gillette, D. A.: A qualitative geophysical explanation for hot spot dust emitting source regions, *Contributions to Atmospheric Physics*, 72, 67–77, 1999.
- Gillette, D. A. and Passi, R.: Modeling dust emission caused by wind erosion, *J. Geophys. Res.-Atmos.*, 93, 14233–14242, <https://doi.org/10.1029/JD093iD11p14233>, 1988.
- Ginoux, P., Chin, M., Tegen, I., Prospero, J. M., Holben, B., Dubovik, O., and Lin, S.-J.: Sources and distributions of dust aerosols simulated with the GOCART model, *J. Geophys. Res.-Atmos.*, 106, 20255–20273, <https://doi.org/10.1029/2000JD000053>, 2001.
- Ginoux, P., Prospero, J. M., Gill, T. E., Hsu, N. C., and Zhao, M.: Global-scale attribution of anthropogenic and natural dust sources and their emission rates based on MODIS Deep Blue aerosol products, *Rev. Geophys.*, 50, RG3005, <https://doi.org/10.1029/2012RG000388>, 2012.
- Guieu, C., Azhar, M. A., Aumont, O., Mahowald, N., Levy, M., Ethé, C., and Lachkar, Z.: Major Impact of Dust Deposition on the Productivity of the Arabian Sea, *Geophys. Res. Lett.*, 46, 6736–6744, <https://doi.org/10.1029/2019GL082770>, 2019.
- Hammer, M. S., Martin, R. V., van Donkelaar, A., Buchard, V., Torres, O., Ridley, D. A., and Spurr, R. J. D.: Interpreting the ultraviolet aerosol index observed with the OMI satellite instrument to understand absorption by organic aerosols: implications for atmospheric oxidation and direct radiative effects, *Atmos. Chem. Phys.*, 16, 2507–2523, <https://doi.org/10.5194/acp-16-2507-2016>, 2016.
- Holben, B. N., Eck, T. F., Slutsker, I., Tanré, D., Buis, J. P., Setzer, A., Vermote, E., Reagan, J. A., Kaufman, Y. J., Nakajima, T., Lavenu, F., Jankowiak, I., and Smirnov, A.: AERONET—A Federated Instrument Network and Data Archive for Aerosol Characterization, *Remote Sens. Environ.*, 66, 1–16, [https://doi.org/10.1016/S0034-4257\(98\)00031-5](https://doi.org/10.1016/S0034-4257(98)00031-5), 1998.
- Hsu, N. C., Jeong, M.-J., Bettenhausen, C., Sayer, A. M., Hansell, R., Seftor, C. S., Huang, J., and Tsay, S.-C.: Enhanced Deep Blue aerosol retrieval algorithm: The second generation, *J. Geophys. Res.-Atmos.*, 118, 9296–9315, <https://doi.org/10.1002/jgrd.50712>, 2013.
- Huneeus, N., Schulz, M., Balkanski, Y., Griesfeller, J., Prospero, J., Kinne, S., Bauer, S., Boucher, O., Chin, M., Dentener, F., Diehl, T., Easter, R., Fillmore, D., Ghan, S., Ginoux, P., Grini, A., Horowitz, L., Koch, D., Krol, M. C., Landing, W., Liu, X., Mahowald, N., Miller, R., Morcrette, J.-J., Myhre, G., Perner, J., Perlwitz, J., Stier, P., Takemura, T., and Zender, C. S.: Global dust model intercomparison in AeroCom phase I, *Atmos. Chem. Phys.*, 11, 7781–7816, <https://doi.org/10.5194/acp-11-7781-2011>, 2011.
- Jaeglé, L., Quinn, P. K., Bates, T. S., Alexander, B., and Lin, J.-T.: Global distribution of sea salt aerosols: new constraints from in situ and remote sensing observations, *Atmos. Chem. Phys.*, 11, 3137–3157, <https://doi.org/10.5194/acp-11-3137-2011>, 2011.
- Jickells, T. D., An, Z. S., Andersen, K. K., Baker, A. R., Bergametti, G., Brooks, N., Cao, J. J., Boyd, P. W., Duce, R. A., Hunter, K. A., Kawahata, H., Kubilay, N., laRoche, J., Liss, P. S., Mahowald, N., Prospero, J. M., Ridgwell, A. J., Tegen, I., and Torres, R.: Global Iron Connections Between Desert Dust, Ocean Biogeochemistry, and Climate, *Science*, 308, 67–71, <https://doi.org/10.1126/science.1105959>, 2005.
- Keller, C. A., Long, M. S., Yantosca, R. M., Da Silva, A. M., Pawson, S., and Jacob, D. J.: HEMCO v1.0: a versatile, ESMF-compliant component for calculating emissions in atmospheric models, *Geosci. Model Dev.*, 7, 1409–1417, <https://doi.org/10.5194/gmd-7-1409-2014>, 2014.
- Kok, J. F., Adebisi, A. A., Albani, S., Balkanski, Y., Checa-Garcia, R., Chin, M., Colarco, P. R., Hamilton, D. S., Huang, Y., Ito, A., Klose, M., Leung, D. M., Li, L., Mahowald, N. M., Miller, R. L., Obiso, V., Pérez García-Pando, C., Rocha-Lima, A., Wan, J. S., and Whicker, C. A.: Improved representation of the global dust cycle using observational constraints on dust properties and abundance, *Atmos. Chem. Phys.*, 21, 8127–8167, <https://doi.org/10.5194/acp-21-8127-2021>, 2021.
- Kosmopoulos, P. G., Kazadzis, S., Taylor, M., Athanasopoulou, E., Speyer, O., Raptis, P. I., Marinou, E., Proestakis, E., Solomos, S., Gerasopoulos, E., Amiridis, V., Bais, A., and Kontoes, C.: Dust impact on surface solar irradiance assessed with model simulations, satellite observations and ground-based measurements, *Atmos. Meas. Tech.*, 10, 2435–2453, <https://doi.org/10.5194/amt-10-2435-2017>, 2017.
- Latimer, R. N. C. and Martin, R. V.: Interpretation of measured aerosol mass scattering efficiency over North America using a chemical transport model, *Atmos. Chem. Phys.*, 19, 2635–2653, <https://doi.org/10.5194/acp-19-2635-2019>, 2019.
- Liu, H., Jacob, D., Bey, I., and Yantosca, R.: Constraints from ²¹⁰Pb and ⁷Be on wet deposition and transport in a global three-dimensional chemical tracer model driven by assimilated meteorological fields, *J. Geophys. Res.-Atmos.*, 106, 12109–12128, <https://doi.org/10.1029/2000JD900839>, 2001.
- Lyapustin, A., Wang, Y., Korkin, S., and Huang, D.: MODIS Collection 6 MAIAC algorithm, *Atmos. Meas. Tech.*, 11, 5741–5765, <https://doi.org/10.5194/amt-11-5741-2018>, 2018.
- Marais, E. A., Jacob, D. J., Jimenez, J. L., Campuzano-Jost, P., Day, D. A., Hu, W., Krechmer, J., Zhu, L., Kim, P. S., Miller, C. C., Fisher, J. A., Travis, K., Yu, K., Hanisco, T. F., Wolfe, G. M., Arkinson, H. L., Pye, H. O. T., Froyd, K. D., Liao, J., and McNeill, V. F.: Aqueous-phase mechanism for secondary organic aerosol formation from isoprene: application to the southeast United States and co-benefit of SO₂ emission controls, *Atmos. Chem. Phys.*, 16, 1603–1618, <https://doi.org/10.5194/acp-16-1603-2016>, 2016.
- Martin, R. V., Jacob, D. J., Yantosca, R. M., Chin, M., and Ginoux, P.: Global and regional decreases in tropospheric oxidants from photochemical effects of aerosols, *J. Geophys. Res.-Atmos.*, 108, 4097, <https://doi.org/10.1029/2002JD002622>, 2003.
- Meng, J., Martin, R. V., Ginoux, P., Ridley, D. A., and Sulprizio, M. P.: Global High Resolution Dust Emission Inventory for Chemical Transport Models (Version 2020_v1.0), <https://doi.org/10.5281/zenodo.4060248>, 2020a.
- Meng, J., Martin, R. V., and Ridley, D. A.: *Offline_Dust_Emissions_SourceCode_2020_v1.0*, <https://doi.org/10.5281/zenodo.4062003>, 2020b.
- Meng, J., Martin, R. V., Hammer, M., van Donkelaar, A., Ginoux, P., and Ridley, D.: Observations of AOD and GEOS-Chem simulation model output dataset (Version v1.0) [Data set], Zenodo, <https://doi.org/10.5281/zenodo.4312944>, 2020c.

- Park, R. J., Jacob, D. J., Chin, M., and Martin, R. V.: Sources of carbonaceous aerosols over the United States and implications for natural visibility, *J. Geophys. Res.-Atmos.*, 108, 4355, <https://doi.org/10.1029/2002JD003190>, 2003.
- Park, R. J., Jacob, D. J., Field, B. D., Yantosca, R. M., and Chin, M.: Natural and transboundary pollution influences on sulfate-nitrate-ammonium aerosols in the United States: Implications for policy, *J. Geophys. Res.-Atmos.*, 109, D15204, <https://doi.org/10.1029/2003JD004473>, 2004.
- Pye, H. O. T., Chan, A. W. H., Barkley, M. P., and Seinfeld, J. H.: Global modeling of organic aerosol: the importance of reactive nitrogen (NO_x and NO_3), *Atmos. Chem. Phys.*, 10, 11261–11276, <https://doi.org/10.5194/acp-10-11261-2010>, 2010.
- Ridley, D. A., Heald, C. L., and Ford, B.: North African dust export and deposition: A satellite and model perspective, *J. Geophys. Res.-Atmos.*, 117, D02202, <https://doi.org/10.1029/2011JD016794>, 2012.
- Ridley, D. A., Heald, C. L., Pierce, J. R., and Evans, M. J.: Toward resolution-independent dust emissions in global models: Impacts on the seasonal and spatial distribution of dust, *Geophys. Res. Lett.*, 40, 2873–2877, <https://doi.org/10.1002/grl.50409>, 2013.
- Ridley, D. A., Heald, C. L., Kok, J. F., and Zhao, C.: An observationally constrained estimate of global dust aerosol optical depth, *Atmos. Chem. Phys.*, 16, 15097–15117, <https://doi.org/10.5194/acp-16-15097-2016>, 2016.
- Sayer, A. M., Munchak, L. A., Hsu, N. C., Levy, R. C., Bettenhausen, C., and Jeong, M.-J.: MODIS Collection 6 aerosol products: Comparison between Aqua's e-Deep Blue, Dark Target, and “merged” data sets, and usage recommendations, *J. Geophys. Res.-Atmos.*, 119, 13965–13989, <https://doi.org/10.1002/2014JD022453>, 2014.
- Schepanski, K., Tegen, I., and Macke, A.: Comparison of satellite based observations of Saharan dust source areas, *Remote Sens. Environ.*, 123, 90–97, <https://doi.org/10.1016/j.rse.2012.03.019>, 2012.
- Shao, Y., Raupach, M. R., and Findlater, P. A.: Effect of saltation bombardment on the entrainment of dust by wind, *J. Geophys. Res.-Atmos.*, 98, 12719–12726, <https://doi.org/10.1029/93JD00396>, 1993.
- Tagliabue, A., Bowie, A. R., Boyd, P. W., Buck, K. N., Johnson, K. S., and Saito, M. A.: The integral role of iron in ocean biogeochemistry, *Nature*, 543, 51–59, <https://doi.org/10.1038/nature21058>, 2017.
- Tang, M., Huang, X., Lu, K., Ge, M., Li, Y., Cheng, P., Zhu, T., Ding, A., Zhang, Y., Gligorovski, S., Song, W., Ding, X., Bi, X., and Wang, X.: Heterogeneous reactions of mineral dust aerosol: implications for tropospheric oxidation capacity, *Atmos. Chem. Phys.*, 17, 11727–11777, <https://doi.org/10.5194/acp-17-11727-2017>, 2017.
- The International GEOS-Chem User Community: geoschem/geoschem: GEOS-Chem 12.5.0 (Version 12.5.0), Zenodo, <https://doi.org/10.5281/zenodo.3403111>, 2019.
- Wang, Q., Jacob, D. J., Spackman, J. R., Perring, A. E., Schwarz, J. P., Moteki, N., Marais, E. A., Ge, C., Wang, J., and Barrett, S. R. H.: Global budget and radiative forcing of black carbon aerosol: Constraints from pole-to-pole (HIPPO) observations across the Pacific, *J. Geophys. Res.-Atmos.*, 119, 195–206, <https://doi.org/10.1002/2013JD020824>, 2014.
- Yu, H., Chin, M., Yuan, T., Bian, H., Remer, L. A., Prospero, J. M., Omar, A., Winker, D., Yang, Y., Zhang, Y., Zhang, Z., and Zhao, C.: The fertilizing role of African dust in the Amazon rainforest: A first multiyear assessment based on data from Cloud-Aerosol Lidar and Infrared Pathfinder Satellite Observations, *Geophys. Res. Lett.*, 42, 1984–1991, <https://doi.org/10.1002/2015GL063040>, 2015.
- Yu, Y., Kalashnikova, O. V., Garay, M. J., Lee, H., and Notaro, M.: Identification and Characterization of Dust Source Regions Across North Africa and the Middle East Using MISR Satellite Observations, *Geophys. Res. Lett.*, 45, 6690–6701, <https://doi.org/10.1029/2018GL078324>, 2018.
- Zender, C. S., Bian, H., and Newman, D.: Mineral Dust Entrainment and Deposition (DEAD) model: Description and 1990s dust climatology, *J. Geophys. Res.-Atmos.*, 108, 4416, <https://doi.org/10.1029/2002JD002775>, 2003.
- Zender, C. S., Miller, R. L. R. L., and Tegen, I.: Quantifying mineral dust mass budgets: Terminology, constraints, and current estimates, *Eos*, 85, 509–512, <https://doi.org/10.1029/2004EO480002>, 2004.
- Zhang, L., Kok, J. F., Henze, D. K., Li, Q., and Zhao, C.: Improving simulations of fine dust surface concentrations over the western United States by optimizing the particle size distribution, *Geophys. Res. Lett.*, 40, 3270–3275, <https://doi.org/10.1002/grl.50591>, 2013.