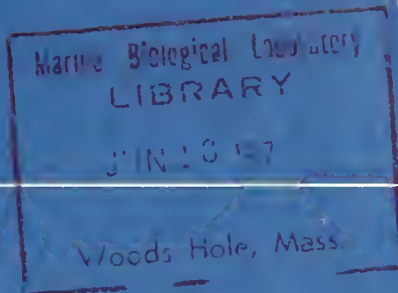


NOAA Technical Report NMFS CIRC-394



Marine Flora and Fauna of the Northeastern United States. Tardigrada

LELAND W. POLLOCK

SEATTLE, WA
MAY 1976

noaa

NATIONAL OCEANIC AND
ATMOSPHERIC ADMINISTRATION

National Marine
Fisheries Service

NOAA TECHNICAL REPORTS

National Marine Fisheries Service, Circulars

The major responsibilities of the National Marine Fisheries Service (NMFS) are to monitor and assess the abundance and geographic distribution of fishery resources, to understand and predict fluctuations in the quantity and distribution of these resources, and to establish levels for optimum use of the resources. NMFS is also charged with the development and implementation of policies for managing national fishing grounds, development and enforcement of domestic fisheries regulations, surveillance of foreign fishing off United States coastal waters, and the development and enforcement of international fishery agreements and policies. NMFS also assists the fishing industry through marketing service and economic analysis programs, and mortgage insurance and vessel construction subsidies. It collects, analyzes, and publishes statistics on various phases of the industry.

The NOAA Technical Report NMFS CIRC series continues a series that has been in existence since 1941. The Circulars are technical publications of general interest intended to aid conservation and management. Publications that review in considerable detail and at a high technical level certain broad areas of research appear in this series. Technical papers originating in economics studies and from management investigations appear in the Circular series.

NOAA Technical Reports NMFS CIRC are available free in limited numbers to governmental agencies, both Federal and State. They are also available in exchange for other scientific and technical publications in the marine sciences. Individual copies may be obtained (unless otherwise noted) from D83, Technical Information Division, Environmental Science Information Center, NOAA, Washington, D.C. 20235. Recent Circulars are:

315. Synopsis of biological data on the chum salmon, *Oncorhynchus keta* (Walbaum) 1792. By Richard G. Bakkala. March 1970, iii + 89 p., 15 figs., 51 tables.
319. Bureau of Commercial Fisheries Great Lakes Fishery Laboratory, Ann Arbor, Michigan. By Bureau of Commercial Fisheries. March 1970, 8 p., 7 figs.
330. EASTROPAC Atlas: Vols. 1-7. Catalog No. I 49.4:330 (vol.) 11 vols. Available from the Superintendent of Documents, U.S. Government Printing Office, Washington, D.C. 20402.
331. Guidelines for the processing of hot smoked chub. By H. L. Seagran, J. T. Graikoski, and J. A. Emerson. January 1970, iv + 23 p., 8 figs., 2 tables.
332. Pacific hake. (12 articles by 20 authors.) March 1970, iii + 152 p., 72 figs., 47 tables.
333. Recommended practices for vessel sanitation and fish handling. By Edgar W. Bowman and Alfred Larsen. March 1970, iv + 27 p., 6 figs.
335. Progress report of the Bureau of Commercial Fisheries Center for Estuarine and Menhaden Research, Pesticide Field Station, Gulf Breeze, Fla., fiscal year 1969. By the Laboratory staff. August 1970, iii + 33 p., 29 figs., 12 tables.
336. The northern fur seal. By Ralph C. Baker, Ford Wilke, and C. Howard Baltzo. April 1970, iii + 19 p., 13 figs.
337. Program of Division of Economic Research, Bureau of Commercial Fisheries, fiscal year 1969. By Division of Economic Research, April 1970, iii + 29 p., 12 figs., 7 tables.
338. Bureau of Commercial Fisheries Biological Laboratory, Auke Bay, Alaska. By Bureau of Commercial Fisheries, June 1970, 8 p., 6 figs.
339. Salmon research at Ice Harbor Dam. By Wesley J. Ebel. April 1970, 6 p., 4 figs.
340. Bureau of Commercial Fisheries Technological Laboratory, Gloucester, Massachusetts. By Bureau of Commercial Fisheries, June 1970, 8 p., 8 figs.
341. Report of the Bureau of Commercial Fisheries Biological Laboratory, Beaufort, N.C., for the fiscal year ending June 30, 1968. By the Laboratory staff. August 1970, iii + 24 p., 11 figs., 16 tables.
342. Report of the Bureau of Commercial Fisheries Biological Laboratory, St. Petersburg Beach, Florida, fiscal year 1969. By the Laboratory staff. August 1970, iii + 22 p., 20 figs., 8 tables.
343. Report of the Bureau of Commercial Fisheries Biological Laboratory, Galveston, Texas, fiscal year 1969. By the Laboratory staff. August 1970, iii + 39 p., 28 figs., 9 tables.
344. Bureau of Commercial Fisheries Tropical Atlantic Biological Laboratory progress in research 1965-69. Miami, Florida. By Ann Weeks. October 1970, iv + 65 p., 53 figs.,
346. Sportsman's guide to handling, smoking, and preserving Great Lakes coho salmon. By Shearon Dudley, J. T. Graikoski, H. L. Seagran, and Paul M. Earl. September 1970, iii + 28 p., 15 figs.
347. Synopsis of biological data on Pacific ocean perch, *Sebastes alutus*. By Richard L. Major and Herbert H. Shippen. December 1970, iii + 38 p., 31 figs., 11 tables.
349. Use of abstracts and summaries as communication devices in technical articles. By F. Bruce Sanford. February 1971, iii + 11 p., 1 fig.
350. Research in fiscal year 1969 at the Bureau of Commercial Fisheries Biological Laboratory, Beaufort, N.C. By the Laboratory staff. November 1970, ii + 49 p., 21 figs., 17 tables.
351. Bureau of Commercial Fisheries Exploratory Fishing and Gear Research Base, Pascagoula, Mississippi, July 1, 1967 to June 30, 1969. By Harvey R. Hulis, Jr. and John R. Thompson. November 1970, iv + 29 p., 29 figs., 1 table.
352. Upstream passage of anadromous fish through navigation locks and use of the stream for spawning and nursery habitat, Cape Fear River, N.C., 1962-66. By Paul R. Nichols and Darrell E. Louder. October 1970, iv + 12 p., 9 figs., 4 tables.
356. Floating laboratory for study of aquatic organisms and their environment. By George R. Snyder, Theodore H. Hlahm, and Robert J. McConnell. May 1971, iii + 16 p., 11 figs.,
361. Regional and other related aspects of shellfish consumption — some preliminary findings from the 1969 Consumer Panel Survey. By Morton M. Miller and Darrel A. Nash. June 1971, iv + 18 p., 19 figs., 3 tables, 10 apps.
362. Research vessels of the National Marine Fisheries Service. By Robert S. Wolf. August 1971, iii + 46 p., 25 figs., 3 tables. For sale by the Superintendent of Documents, U.S. Government Printing Office, Washington, D.C. 20402.
364. History and development of surf clam harvesting gear. By Phillip S. Parker. October 1971, iv + 15 p., 16 figs. For sale by the Superintendent of Documents, U.S. Government Printing Office, Washington, D.C. 20402.
365. Processing EASTROPAC STD data and the construction of vertical temperature and salinity sections by computer. By Forrest R. Miller and Kenneth A. Bliss. February 1972, iv + 17 p., 8 figs., 3 appendix figs. For sale by the Superintendent of Documents, U.S. Government Printing Office, Washington, D.C. 20402.
366. Key to field identification of anadromous juvenile salmonids in the Pacific Northwest. By Robert J. McConnell and George R. Snyder. January 1972, iv + 6 p., 4 figs. For sale by the Superintendent of Documents, U.S. Government Printing Office, Washington, D.C. 20402.
367. Engineering economic model for fish protein concentration processes. By K. K. Almenas, L. C. Durilla, R. C. Ernst, J. W. Gentry, M. B. Hale, and J. M. Marchello. October 1972, iii + 175 p., 6 figs., 6 tables. For sale by the Superintendent of Documents, U.S. Government Printing Office, Washington, D.C. 20402.
368. Cooperative Gulf of Mexico estuarine inventory and study, Florida: Phase I, area description. By J. Kneeland McNulty, William N. Lindall, Jr., and James E. Sykes. November 1972, vii + 126 p., 46 figs., 62 tables. For sale by the Superintendent of Documents, U.S. Government Printing Office, Washington, D.C. 20402.
369. Field guide to the angelfishes (Pomacanthidae) in the western Atlantic. By Henry A. Feddern. November 1972, iii + 10 p., 17 figs., For sale by the Superintendent of Documents, U.S. Government Printing Office, Washington, D.C. 20402.

NOAA Technical Report NMFS CIRC-394

Marine Flora and Fauna of the Northeastern United States. Tardigrada

LELAND W. POLLOCK

SEATTLE, WA
MAY 1976

25 p/2

UNITED STATES
DEPARTMENT OF COMMERCE
Elliot L. Richardson, Secretary

NATIONAL OCEANIC AND
ATMOSPHERIC ADMINISTRATION
Robert M. White, Administrator

National Marine
Fisheries Service
Robert W. Schoning, Director



FOREWORD

This issue of the "Circulars" is part of a subseries entitled "Marine Flora and Fauna of the Northeastern United States." This subseries will consist of original, illustrated, modern manuals on the identification, classification, and general biology of the estuarine and coastal marine plants and animals of the northeastern United States. Manuals will be published at irregular intervals on as many taxa of the region as there are specialists willing to collaborate in their preparation.

The manuals are an outgrowth of the widely used "Keys to Marine Invertebrates of the Woods Hole Region," edited by R. I. Smith, published in 1964, and produced under the auspices of the Systematics Ecology Program, Marine Biological Laboratory, Woods Hole, Mass. Instead of revising the "Woods Hole Keys," the staff of the Systematics Ecology Program decided to expand the geographic coverage and bathymetric range and produce the keys in an entirely new set of expanded publications.

The "Marine Flora and Fauna of the Northeastern United States" is being prepared in collaboration with systematic specialists in the United States and abroad. Each manual will be based primarily on recent and ongoing revisionary systematic research and a fresh examination of the plants and animals. Each major taxon, treated in a separate manual, will include an introduction, illustrated glossary, uniform originally illustrated keys, annotated check list with information when available on distribution, habitat, life history, and related biology, references to the major literature of the group, and a systematic index.

These manuals are intended for use by biology students, biologists, biological oceanographers, informed laymen, and others wishing to identify coastal organisms for this region. In many instances the manuals will serve as a guide to additional information about the species or the group.

Geographic coverage of the "Marine Flora and Fauna of the Northeastern United States" is planned to include organisms from the headwaters of estuaries seaward to approximately the 200 m depth on the continental shelf from Maine to Virginia, but may vary somewhat with each major taxon and the interests of collaborators. Whenever possible representative specimens dealt with in the manuals will be deposited in reference collections of the Gray Museum, Marine Biological Laboratory, and other universities and research laboratories in the region.

After a sufficient number of manuals of related taxonomic groups have been published, the manuals will be revised, grouped, and issued as special volumes. These volumes will thus consist of compilations of individual manuals within phyla such as the Coelenterata, Arthropoda, and Mollusca, or of groups of phyla.

CONTENTS

	Page
Introduction	1
Ecology	2
Collecting methods	2
Key to the species of marine Tardigrada of the world	3
Annotated systematic list of marine Tardigrada of the world	21
List of marine Tardigrada reported from the northeastern United States	22
Selected bibliography	22
Index to scientific names	24
Acknowledgments	25
Coordinator's comment	25

The National Marine Fisheries Service (NMFS) does not approve, recommend or endorse any proprietary product or proprietary material mentioned in this publication. No reference shall be made to NMFS, or to this publication furnished by NMFS, in any advertising or sales promotion which would indicate or imply that NMFS approves, recommends or endorses any proprietary product or proprietary material mentioned herein, or which has as its purpose an intent to cause directly or indirectly the advertised product to be used or purchased because of this NMFS publication.

Marine Flora and Fauna of the Northeastern United States. Tardigrada

LELAND W. POLLOCK¹

ABSTRACT

The manual includes an introduction to the general biology, an illustrated key, an annotated systematic list, a selected bibliography, and an index to the Tardigrada of the marine coastal areas of the world to a depth of 5,000 m.

INTRODUCTION

The Tardigrada (*tardus*, L. slow; *gradus*, L. step) comprise a phylum of microscopic metazoa (usually less than 1 mm in length) of uncertain phylogenetic placement. Considerations of their status have been based on 1) their growth by molting; 2) absence of ciliated epithelium; 3) presence of a spacious pseudocoelom in adults; 4) musculature in bandlike bundles; 5) metameric, or at least repetitive, arrangement of unjointed legs, as well as of portions of the ventral nervous system and muscular system; 6) the presence of coelomocytes; 7) the absence of circular muscles; 8) a tripartite foregut; 9) a nonchitinous cuticle; and 10) the occurrence of eutely or cell constancy (although this recently has been disputed, Bertolani 1970). Most of these characteristics suggest an organizational complexity approaching that of the aschelminth phyla, especially the Rotifera and Nematoda. Characters suggesting relationship with the Arthropoda include the first six characters listed above; in addition, their "ladder-type" ventral nervous system recalls the annelid-arthropod line. Tardigradan embryology however apparently includes a total but irregular cleavage pattern and enterocoelous formation of a series of coelomic pouches, of which only the gonocoel is retained in the adult. While this pattern of development is unlike any other known group, it is most similar to that of the deuterostomous invertebrates.

Lack of clarity regarding their phylogenetic affinities suggests that the Tardigrada are far removed from their nearest phyletic neighbor. Apparently they are an old group which has become highly specialized for life in peculiar habitats, such as the water films surrounding lower plants and lining interstitial spaces between grains of sand. Morphological diversity among marine tardigrades attests to their age. On the other hand, the comparative uniformity in appearance and simplicity in morphological characters of freshwater forms supports the hypothesis that marine tardigrades are primitive. There are 43 described species of marine tardigrades included in 17 genera. Most are members of the interstitial meiofauna of sandy sediments.

Since one-half of these are in mono- or ditypic genera, and two-thirds have been discovered since 1950, it is likely that many more species will be described in the future.

Marine tardigrades rarely exceed 0.5 mm in length and are all similar in general body plan (Fig. 1). They possess as many as 11 cephalic appendages, including lateral cirri (a), clavae (cl), external cephalic cirri (ec), internal cephalic cirri (ic), and a median cephalic cirrus (mc). Their bodies usually are cylindrical, with four pairs of legs which terminate in claws, toes, or both. These terminal appendages, the spines or papillae on the legs, and the conformation of the caudal appendage (if present) are important taxonomically. Likewise, the presence and location of somatic cirri, especially posterior-lateral cirrus (e) (Fig. 1), can be of taxonomic significance. In the order Eutardigrada, the

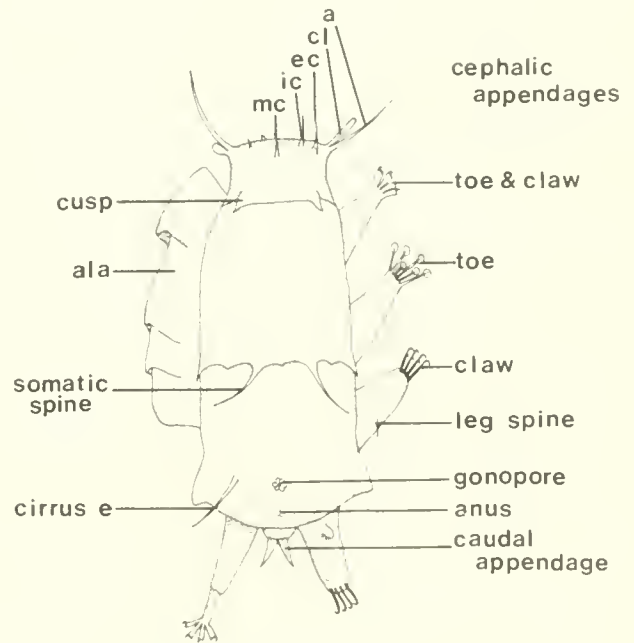


Figure 1.—Diagrammatic illustration of a composite marine tardigrade. Cephalic appendages: a - lateral cephalic cirrus; cl - clava; ec - external cephalic cirrus; ic - internal cephalic cirrus; mc - median cephalic cirrus.

¹Department of Zoology, Drew University, Madison, NJ 07940.

number and relative sizes of placoids or rod-shaped concretions within the bulbous muscular pharynx can be diagnostic.

Members of at least six genera (*Archechiniscus*, *Batillipes*, *Coronarctus*, *Echiniscoides*, *Parastygarctus*, and *Stygarctus*) display sexual dimorphism in the shape and location of gonopores. Females possess rosette gonopores located mid-ventrally at considerable distance anterior to the anus. In males, the gonopore is circular or tubular, mid-ventral and only slightly anterior to the anus. In members of the genus *Halechiniscus*, dimorphism is exhibited in the relation of the length of clavae relative to the lateral cirri. In males, clavae are longer than lateral cirri, while the opposite is true of females. Sex determination in other marine tardigrades is based on presence of mature gametes in the gonad or on the fact that males possess two vasa deferentia while females have a single oviduct.

Tardigrada develop directly. Excepting their disproportionately longer cephalic appendages and their reduced number of claws per leg, juveniles resemble miniature adults. Growth in Tardigrada is accomplished through periodic molting of all cuticular structures, including the linings of the foregut and hindgut. Apparently internal fluid pressure is reduced enough to permit defecation, oviposition, and sperm penetration only during an intermolt period.

Other aspects of the morphology and anatomy of marine tardigrades lie beyond the scope of this presentation. Interested readers are referred to monographs by Marcus (1936), Rudescu (1964), and Ramazzotti (1972), and to a recent review by Renaud-Mornant and Pollock (1971).

ECOLOGY

In recent years, ecological studies of marine Tardigrada have focused largely on those living interstitially among grains of sand (Renaud-Debyser 1959a; Schmidt 1968, 1969; Pollock 1970c; Lindgren 1971). Tardigrades are found throughout portions of intertidal beaches which undergo periodic drainage and replenishment of interstitial water. Most interstitial meiofauna, including tardigrades, are absent or uncommon in beaches of fine sand (mean grain diameter less than 300 μm) and in beaches of larger grain-size but where fine silt and debris clog pore spaces and restrict circulation.

Tardigrada occupy specific portions of littoral beaches creating patterns of zonation both horizontally along the beach surface and vertically within the sediment. A "typical pattern" of species composition and distribution on a single beach becomes evident from studies of temperate, quartz sand beaches. An abundant species and from one to several less common species of *Batillipes* occupy superficial sand

(occurring somewhat deeper in beaches under the influence of heavy surf). The abundant *Batillipes* dominates mid-beach sand while other *Batillipes* often are relegated to more landward or seaward locations. A comparatively denser concentration of *Stygarctus* often occurs deeper within the beach approaching the deepest sediments undergoing tidal drainage of interstitial water.

Less frequently, marine tardigrades are reported from other habitats. Sublittoral specimens have been collected to a depth of 4,700 m (Renaud-Mornant 1974). Their comparative scarcity in most deepwater surveys suggests either that Tardigrada are less successful here than are many other meiofaunal groups or that sampling and/or observational techniques commonly used fail to include such small members of the meiofauna. Certain Tardigrada occur on seaweed ranging from intertidal *Enteromorpha* and *Lichinia* to offshore *Sargassum*. Among the several Tardigrada reportedly living ectocommensally with various other marine invertebrates, *Tetrakentron synaptae* Cuénot, 1892 alone possesses obvious morphological adaptations to such a life-style and has been found exclusively in such a relationship.

COLLECTING METHODS

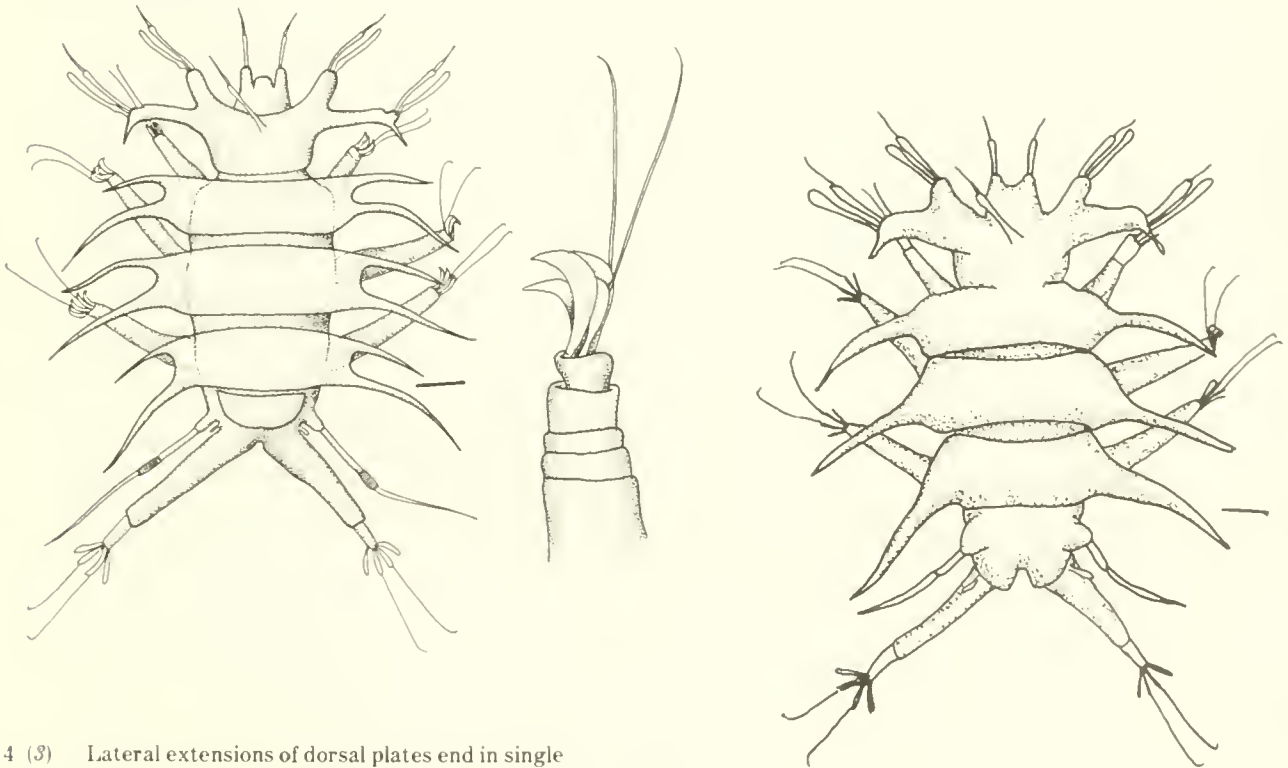
A complete discussion of techniques for working with interstitial meiofauna generally and marine Tardigrada specifically may be found in Hulings and Gray (1971). Quantitative extraction of tardigrades from sand requires rigorous procedures since most species are strongly thigmotactic and vigorously resist dislodgment. Anesthetization by flooding a small sand sample with 3.5% MgCl_2 may be effective for removing Tardigrada from sediments gathered in areas of low to moderate wave activity; however, this technique is not effective quantitatively on samples from "high-energy" beaches (Gray and Rieger 1971). Soaking small quantities of sand (e.g., 10 cm^3 or less) in 10 times that volume of 3.5% ethanol is more effective for anesthetization. This can be followed by three or more rinses of seawater to provide revived and apparently unharmed Tardigrada quantitatively.

Marine Tardigrada can be preserved well in either 5-7% neutralized Formalin or in 70% ethanol. McGinty and Higgins (1968) described a widely used technique for mounting marine tardigrades. Specimens preserved in 7% Formalin are transferred to a 1:10 glycerin-Formalin solution which then is allowed to evaporate to glycerin (a glycerin-alcohol solution works for specimens preserved in alcohol). Tardigrades prepared by this technique can be mounted in glycerine, glycerine jelly, or Hoyer's medium. Phase contrast microscopy is necessary for fine observations, especially if Hoyer's medium is used.

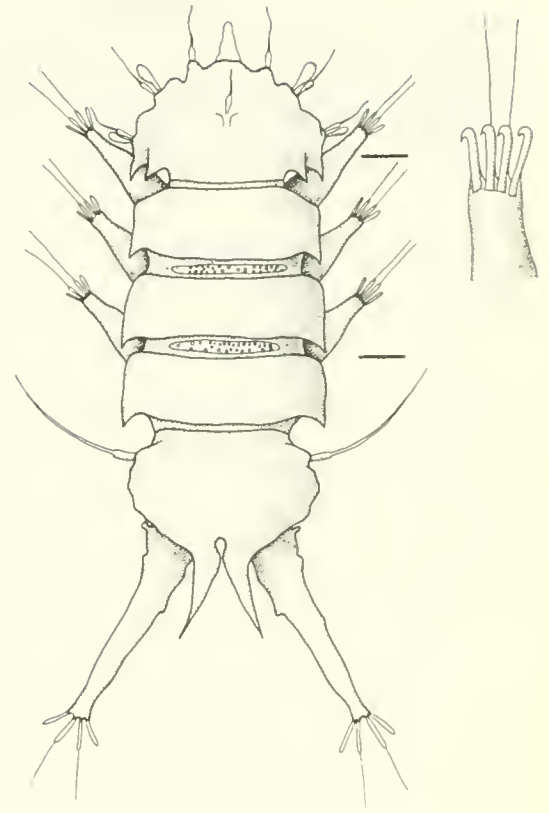
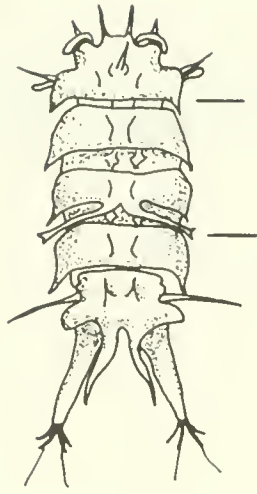
KEY TO THE SPECIES OF MARINE TARDIGRADA OF THE WORLD

The following key is designed for the artificial separation of marine tardigrades. Morphological characters are utilized for easy identification and are not intended to fully describe the animals. While examination of living animals at high power or oil immersion is imperative for complete and accurate descriptions, specimens fixed in 10% Formalin or 70% alcohol are usually recognizable. The illustrations are variously modified from original illustrations or descriptions. Important distinguishing features are indicated on each figure by short pointer lines.

- | | | |
|-------|------------------------------------------------------------------------------------------------|----|
| 1 | Legs terminate in claws which attach directly, or if on toes are longer than toes . | 2 |
| 1 | Legs terminate in toes without claws or with claws shorter than toes . | 12 |
| 2 (1) | Central two claws on each leg bear hairlike extensions . | 3 |
| 2 (1) | Claws without hairlike extensions . | 6 |
| 3 (2) | Caudal spikes absent; anterior margin of head deeply sculptured . | 4 |
| 3 (2) | Caudal spike present; anterior margin of head much less deeply sculptured . | 5 |
| 4 (3) | Lateral extensions of dorsal plates end in two points <i>Parastygarctus higginsi</i> | |



4 (3) Lateral extensions of dorsal plates end in single point *Parastygarctus sterreri*



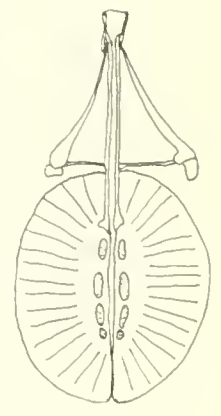
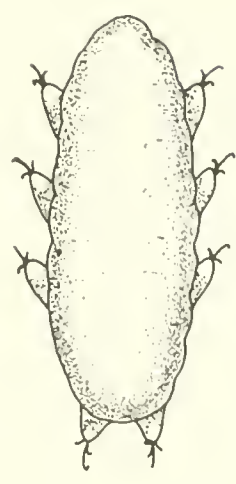
5 (3) Somatic spines on mid posterior border of somatic plate II present; 2 cusps only along margin of cephalic plate *Stygarctus bradypus*

5 (3) Somatic spines on somatic plate II absent; 4 cusps along margin of cephalic plate *Stygarctus granulatus*

6 (2) Cephalic appendages absent 7

6 (2) Cephalic appendages present 9

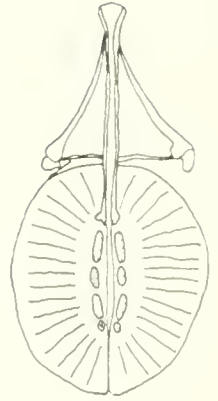
7 (6) First pharyngeal macroplacoid longer than second; inner diameter of pharyngeal tube 3 μm 8



7 (6) First macroplacoid shorter than second; inner diameter of pharyngeal tube 1.5 μm *Hypsibius stenostomus*

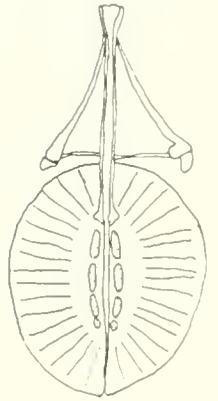
8 (7) Second macroplacoid shorter than third

Hypsibius appellochi

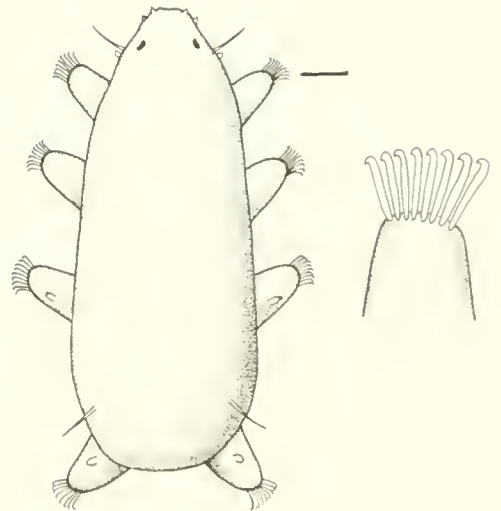


8 (7) Second macroplacoid as long as or longer than third

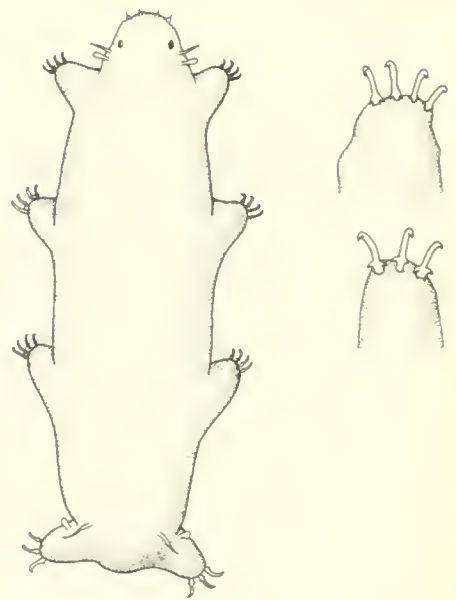
Hypsibius geddesi



9 (6) More than four claws (usually 5-11) on each leg; distinct dorsal cuticular plates absent *Echiniscoides sigismundi*

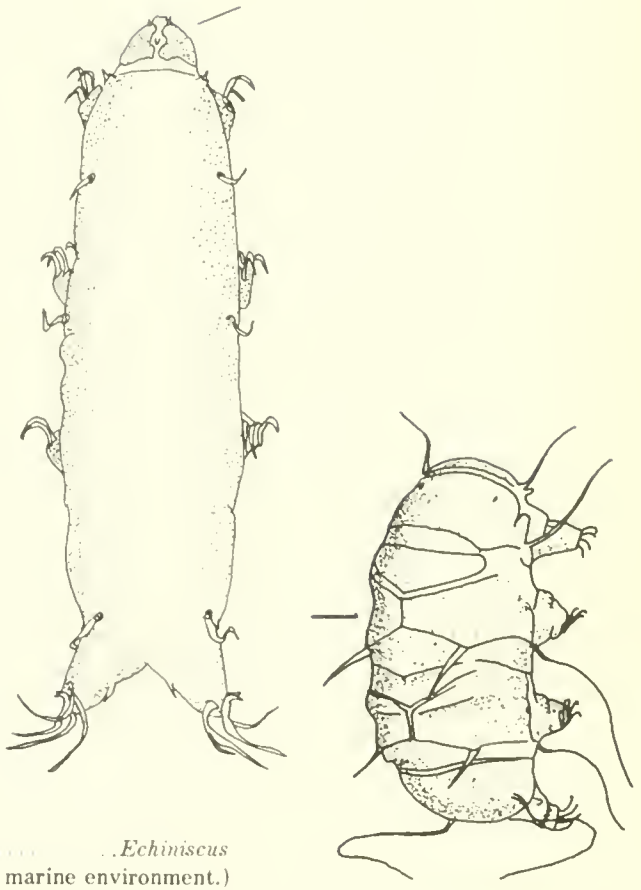


9 (6) Four claws or less per leg



10 (9) Four claws per leg present on anterior three pairs but only three claws per leg on posterior pair; distinct dorsal plates absent; median cirrus absent . . . *Anisonyches diakidius*

10 (9) Four claws per leg present on all legs 11

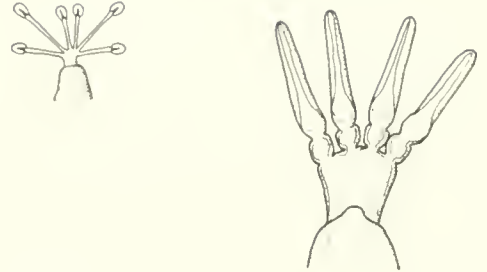


11 (10) Median cirrus present; distinct dorsal cuticular plates absent *Coronarctus tenellus*

11 (10) Median cirrus absent; dorsal cuticular plates present *Echiniscus*
 (*E. quadrispinosus* is the only species reported from marine environment.)

12 (1)	Four to six toes without claws on each leg	13
12 (1)	Four toes with claws on each leg	27

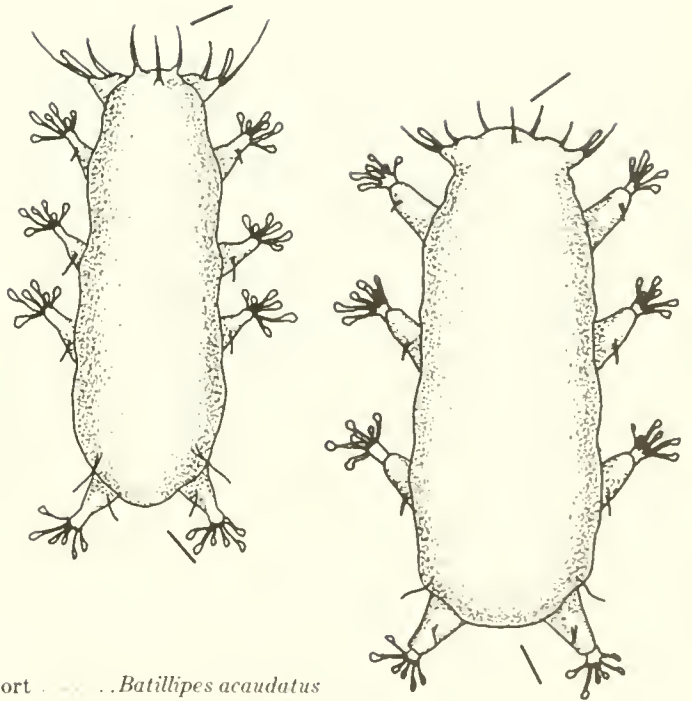
13 (12)	Toes end in disc expansions	14
---------	-----------------------------------	----



13 (12)	Toes end in narrow lobate expansions	26
---------	--------------------------------------------	----

14 (13)	Projecting caudal appendage absent	15
---------	------------------------------------------	----

14 (13)	Projecting caudal appendage present	16
---------	-------------------------------------------	----



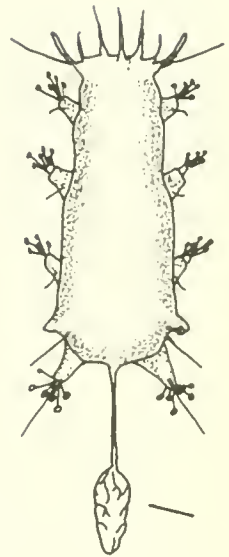
15 (14)	Caudal end swollen cephalic appendages long	<i>Batillipes tubernatis</i>
---------	---------------------------------------------------	------------------------------

15 (14)	Caudal end relatively flat; cephalic appendages short	<i>Batillipes acaudatus</i>
---------	-------------------------------------------------------------	-----------------------------

16 (14) Caudal appendage basically a single spike 17

16 (14) Caudal appendage more than one spike 23

17 (16) Caudal spike terminates in a membranous bag *Batillipes bullacaudatus*



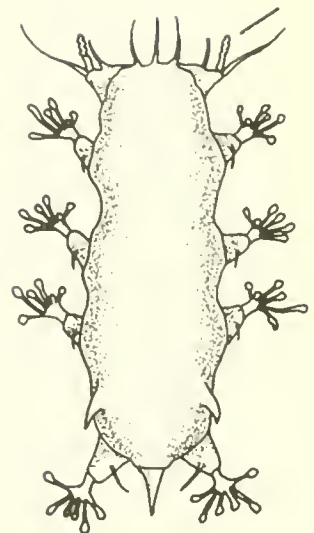
17 (16) Caudal spike blunt or sharp tipped 18

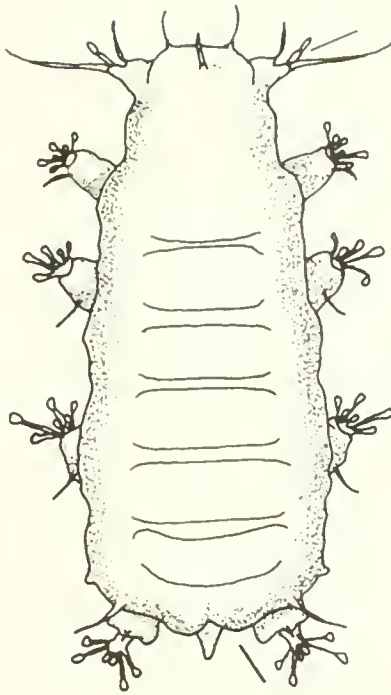
18 (17) Distinct constriction(s) present on clavae 19

18 (17) Clava uniform in width, constrictions absent 21

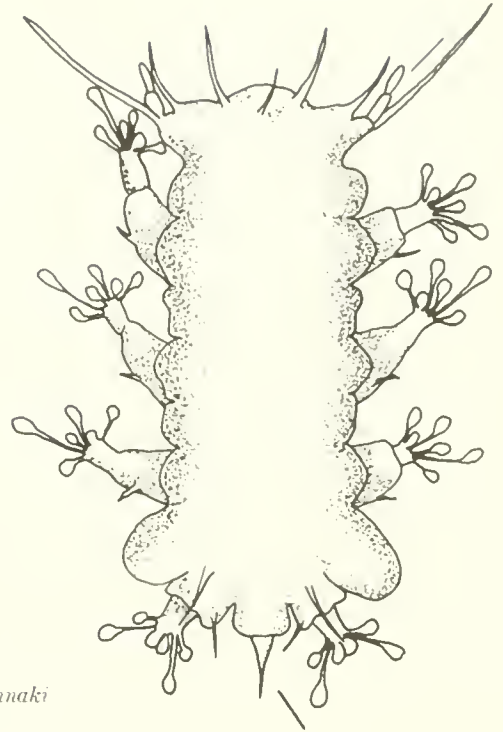
19 (18) Single constriction present on clava 20

19 (18) More than one constriction present on clavae *Batillipes annulatus*



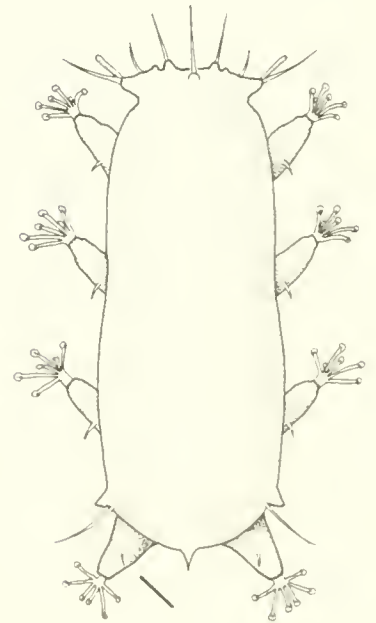


20 (19) Caudal spike from two-lobed base *Batillipes gilmartini*

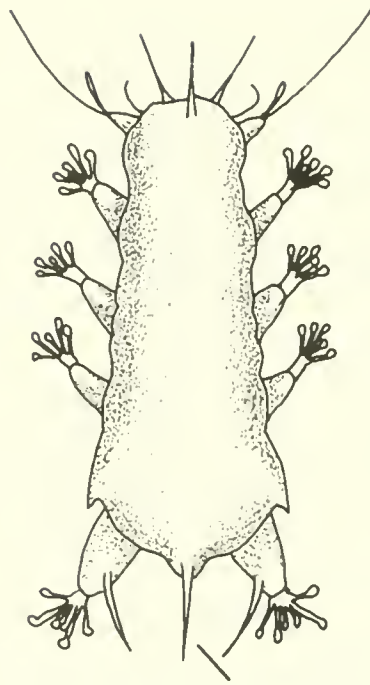


20 (19) Caudal spike from single-lobed base *Batillipes pennaki*

21 (18) Leg spines on hindmost legs short; leg spines present on anterior three pairs of legs *Batillipes mirus*

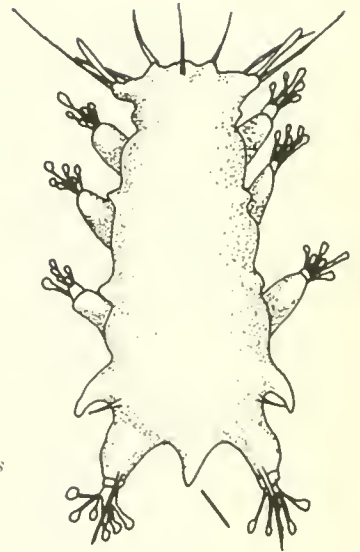


21 (18) Leg spines on hindmost legs long; spines absent on anterior three pairs of legs .

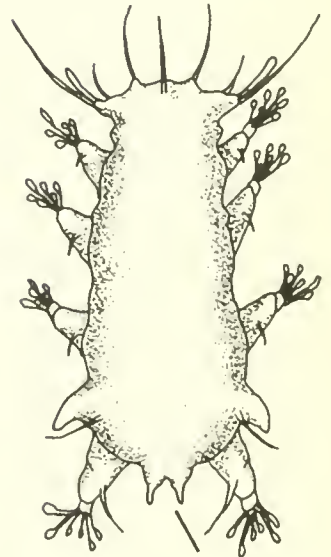


22 (21) Caudal appendage a long, slender, sharp-tipped spike . . . *Batillipes carnonensis*

22 (21) Caudal appendage, a short, thick, blunt-tipped spike *Batillipes similis*

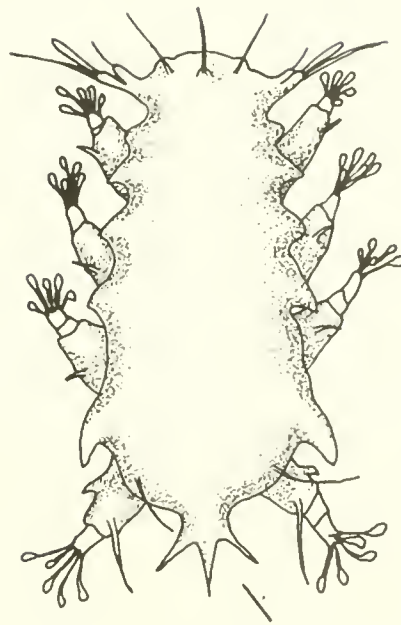
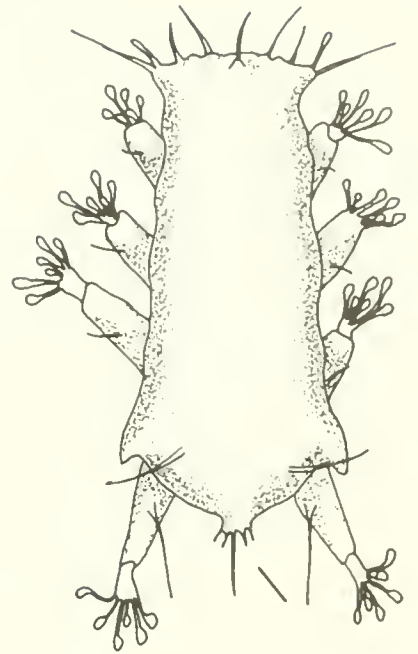


23 (16) Caudal appendage two-spiked *Batillipes dicrocercus*

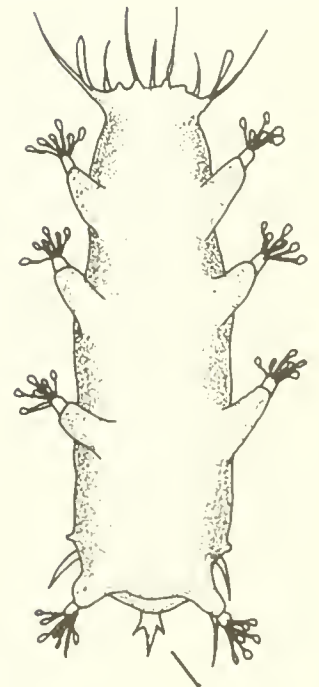


23 (16) Caudal appendage bears three or more spikes 24

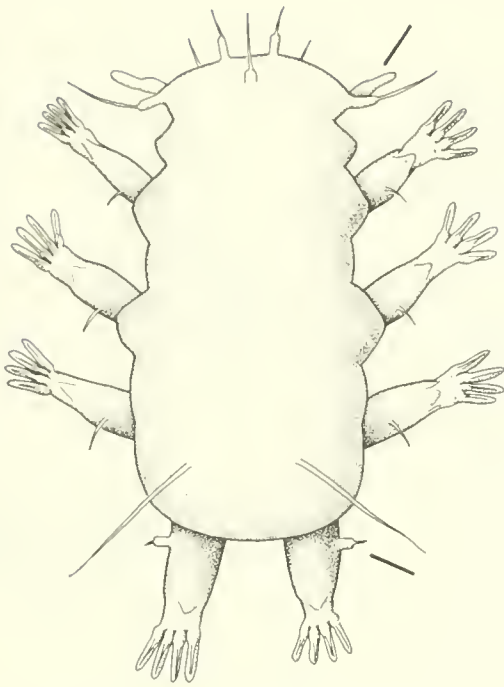
24 (23) Caudal appendage bears more than three spikes; central spike longest *Batillipes phreaticus*



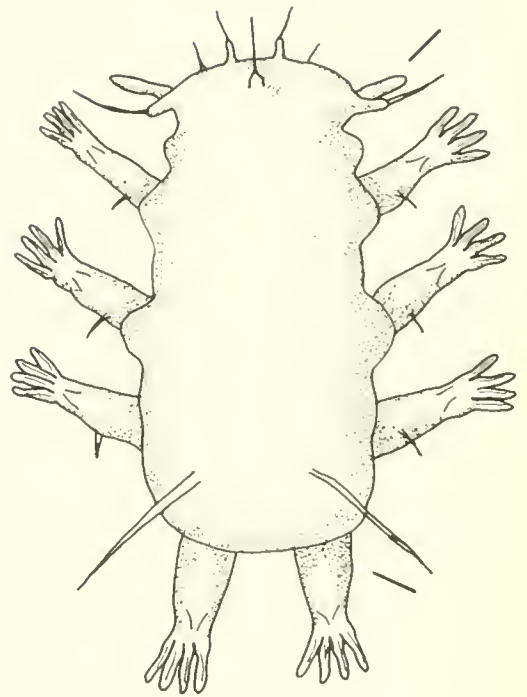
25 (24) Spikes of equal length *Batillipes littoralis*



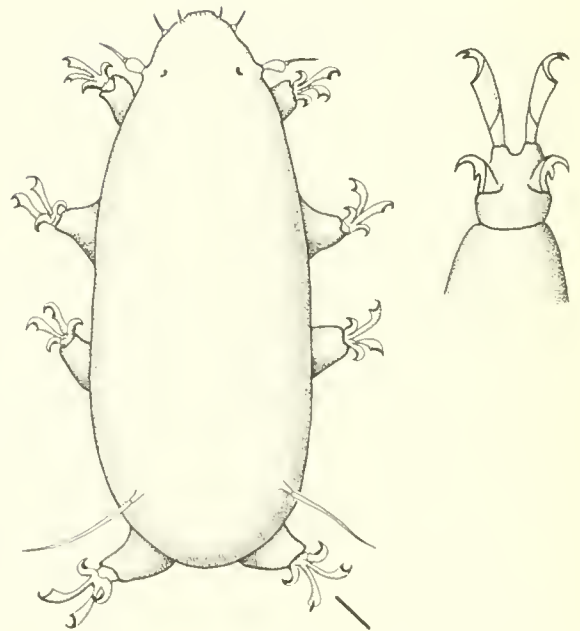
25 (24) Lateral spikes shorter than central spike *Batillipes friauffi*



26 (13) Papilla present on fourth pair of legs; clava slightly constricted *Orzeliscus belopus*



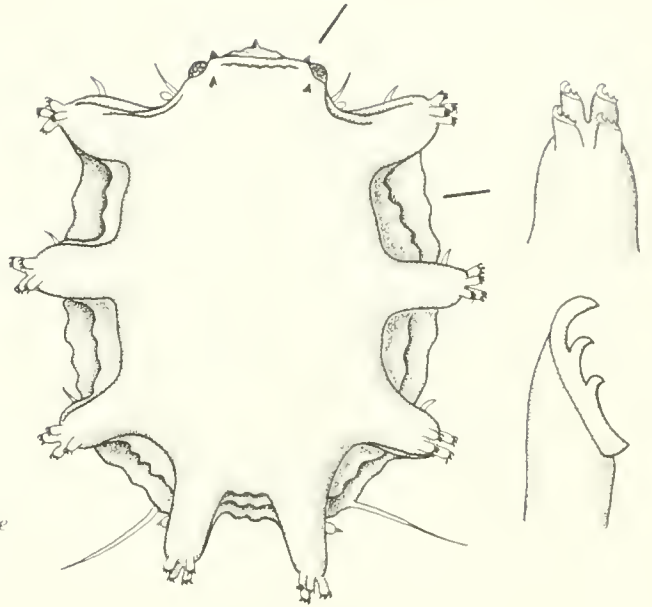
26 (13) Papilla absent on fourth pair of legs; clava uniform in width *Orzeliscus septentrionalis*



27 (12) Middle two toes on each foot much longer than outer two toes *Archechiniscus marci*

27 (12) Toes approximately equal in length 28

- 28 (27) Each claw has more than two exposed points 29
- 28 (27) Each claw has one or two exposed points 30

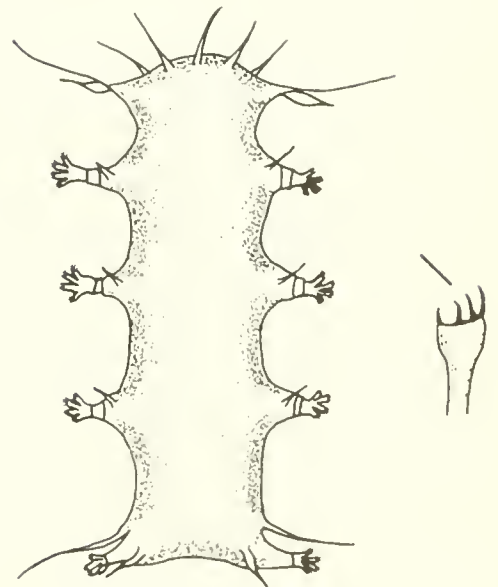


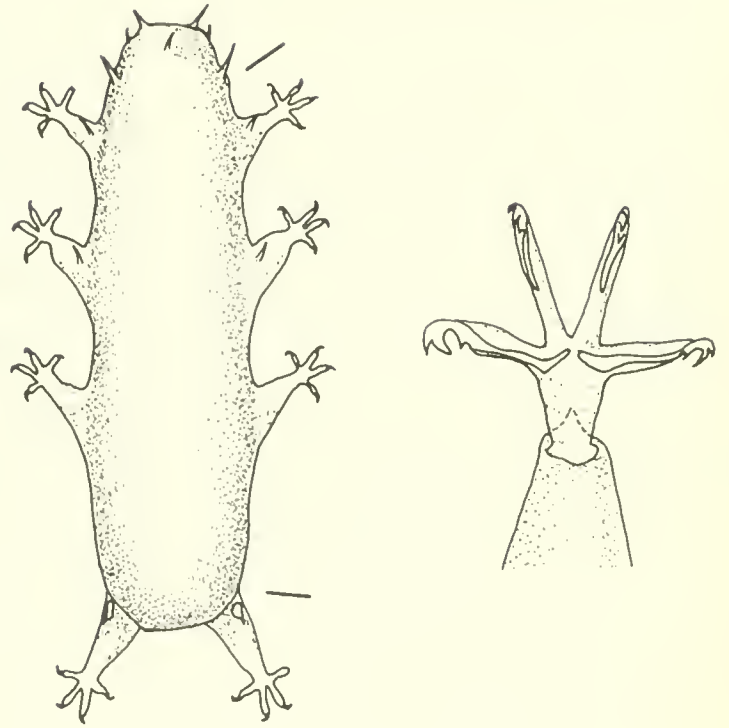
29 (28) Body flattened dorsoventrally; cephalic appendages reduced; ectocommensal *Tetrakentron synaptae*

- 29 (28) Body cylindrical 30

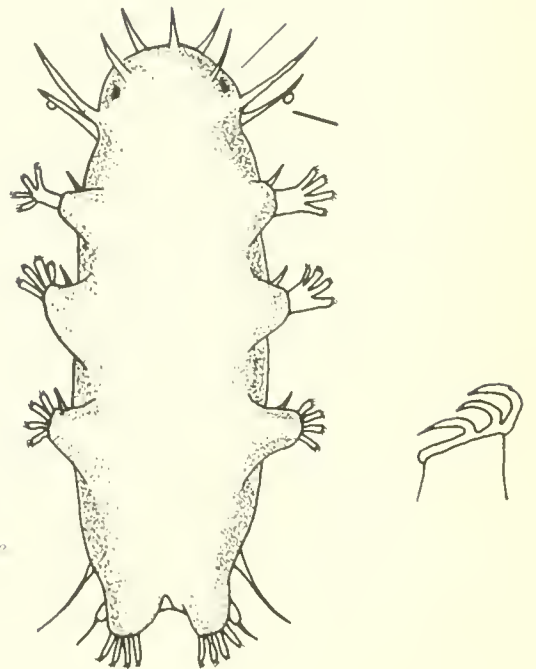
- 30 (29) Each claw has three exposed points 31

30 (29) Each claw has four exposed points *Bathyechiniscus tetronyx*



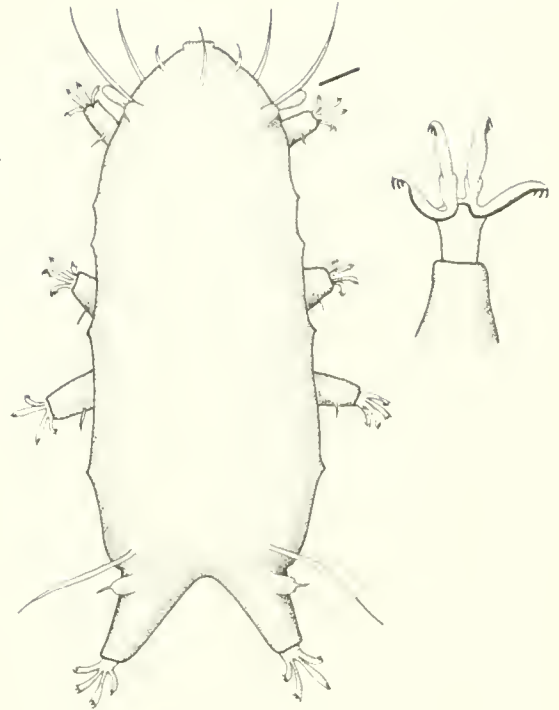


31 (30) Cirri e and clavae both absent
.....*Styraconyx haploceros*

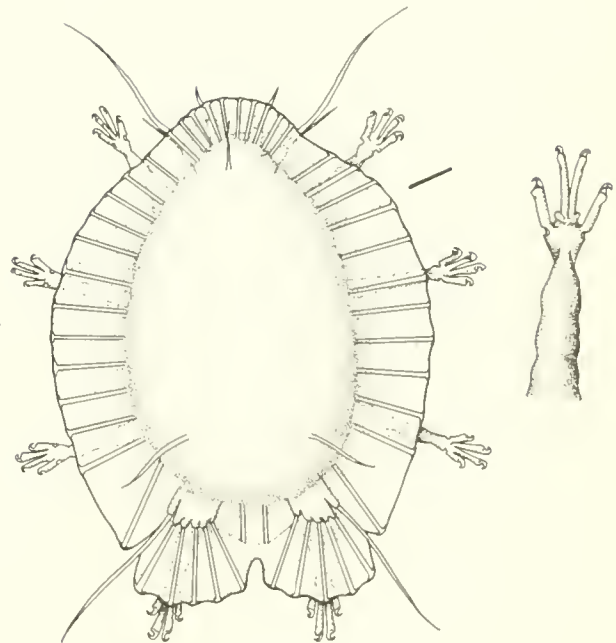


32 (31) Clavae long (30 μm); eyes present*Styraconyx paulae*

32 (31) Clavae short (13 μm); eyes absent *Styraconyx surgassi*



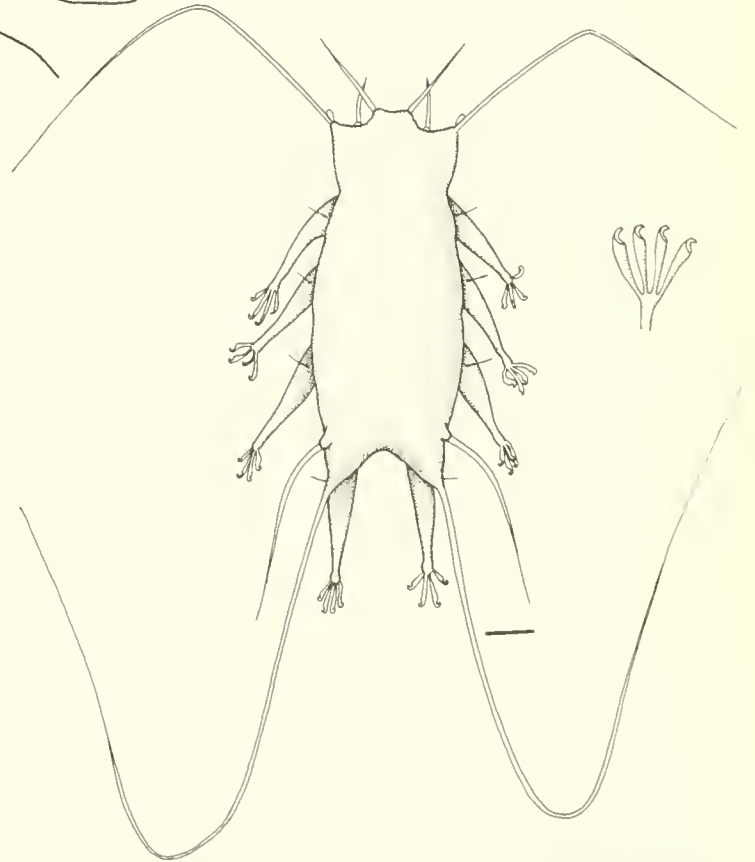
33 (28) Body covered dorsally by tubules and gelatinous coating *Actinarctus doryphorus*



33 (28) Body smooth, lacking tubules and gelatinous coating 34

34 (33) Cuticle forms two caudal projections (branched or unbranched) extending more than body length 35

34 (33) Caudal projections less than body length or absent 36



36 (34) Clava bulb-shaped; less than 0.5 length of lateral cirrus; eyes present *Pleocola limnoriae*

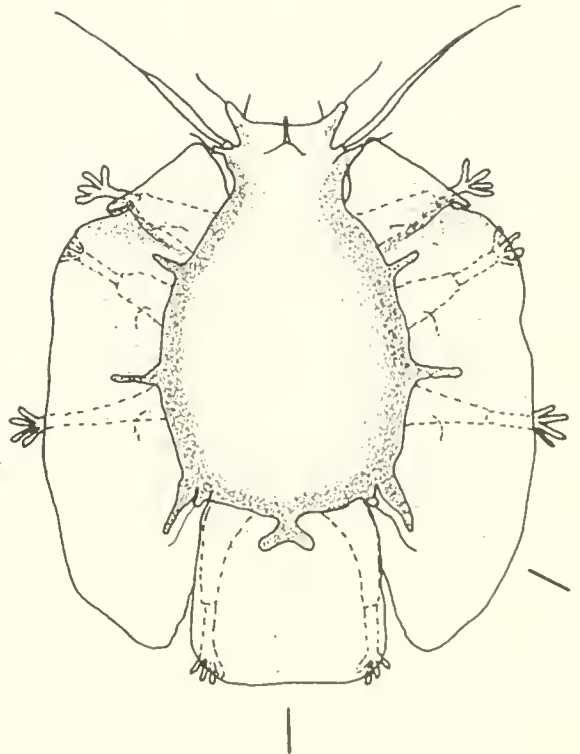
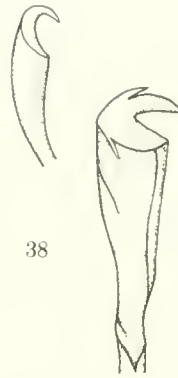
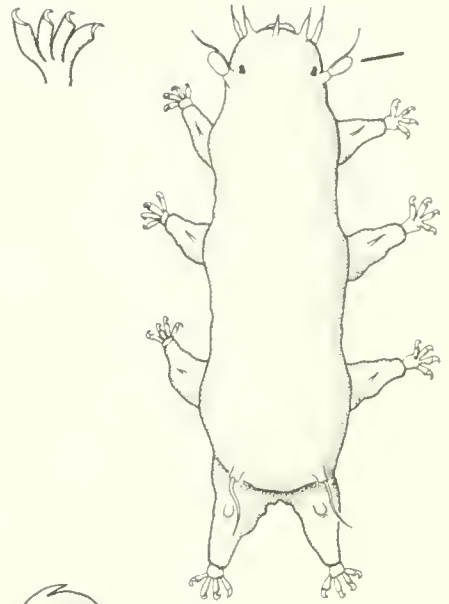
36 (34) Clava thin, more than 0.5 length of lateral cirrus; eyes absent 37

37 (36) All claws crescent shaped without "anchor spikes" 40

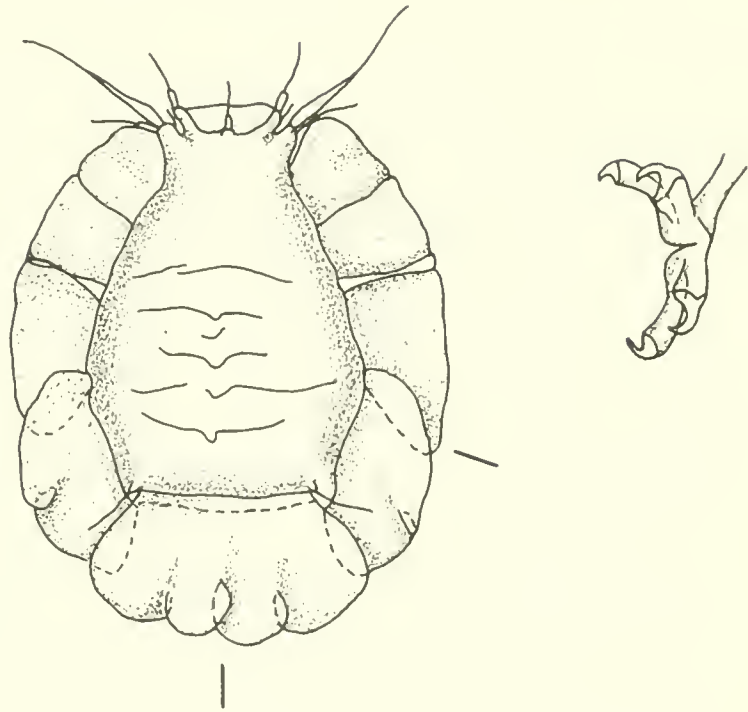
37 (36) Crescent shaped claws on middle two toes of each foot with accessory "anchor spike" embedded in toe 38

38 (37) Five peripheral alae or membranous sheets present 39

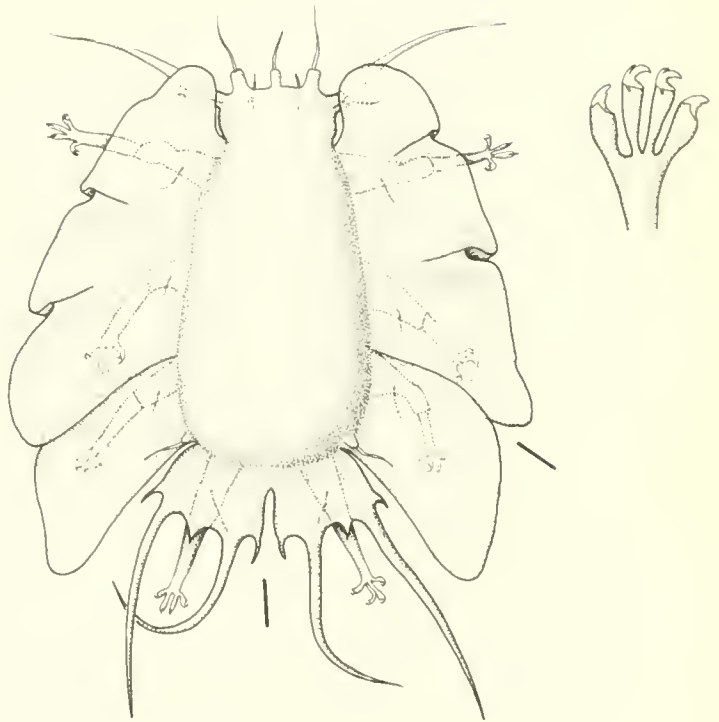
38 (37) Three peripheral alae present; caudal ala smooth, undivided; lateral alae undivided *Florarctus salvati*

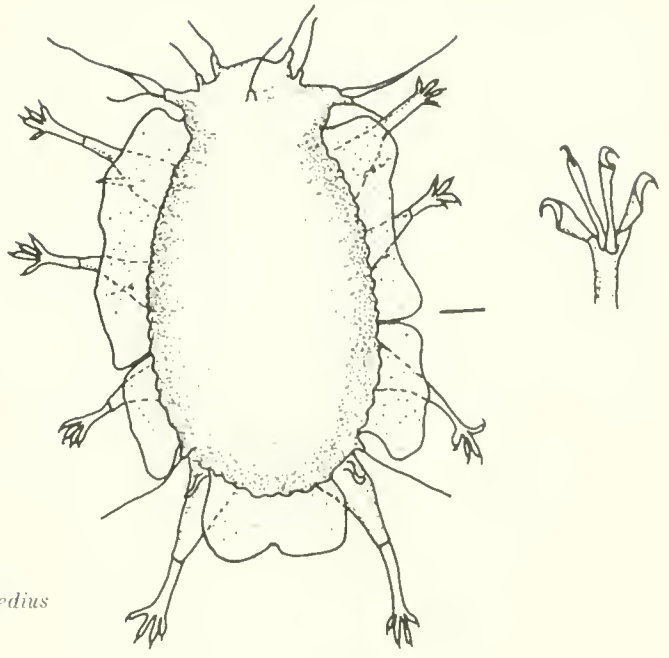


39 (38) Caudal ala slightly sculptured, not divided; lateral alae divided *Florarctus antillensis*



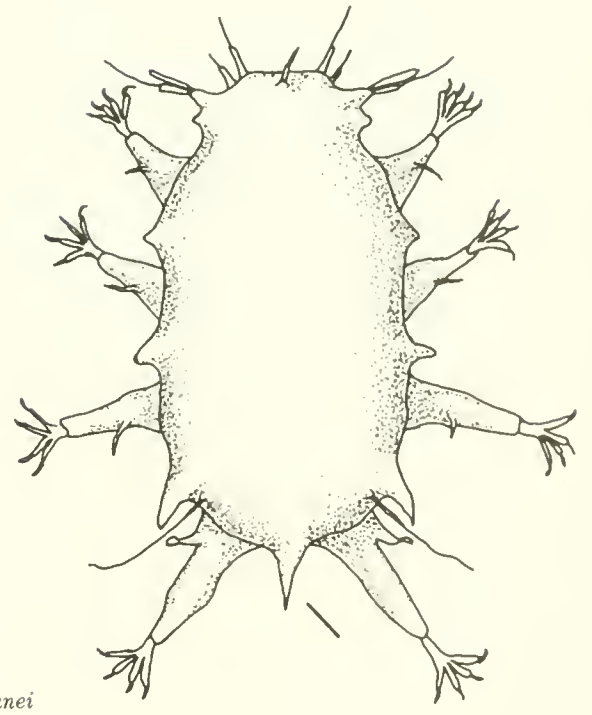
39 (38) Caudal ala deeply sculptured and nearly divided; lateral alae divided *Florarctus heimi*





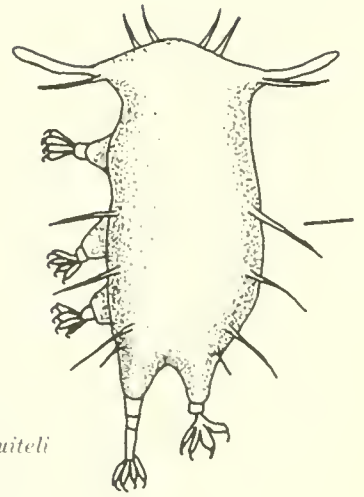
40 (37) Peripheral alae present *Halechiniscus intermedius*

40 (37) Peripheral alae absent 41



41 (40) Caudal spike prominent *Halechiniscus remanei*

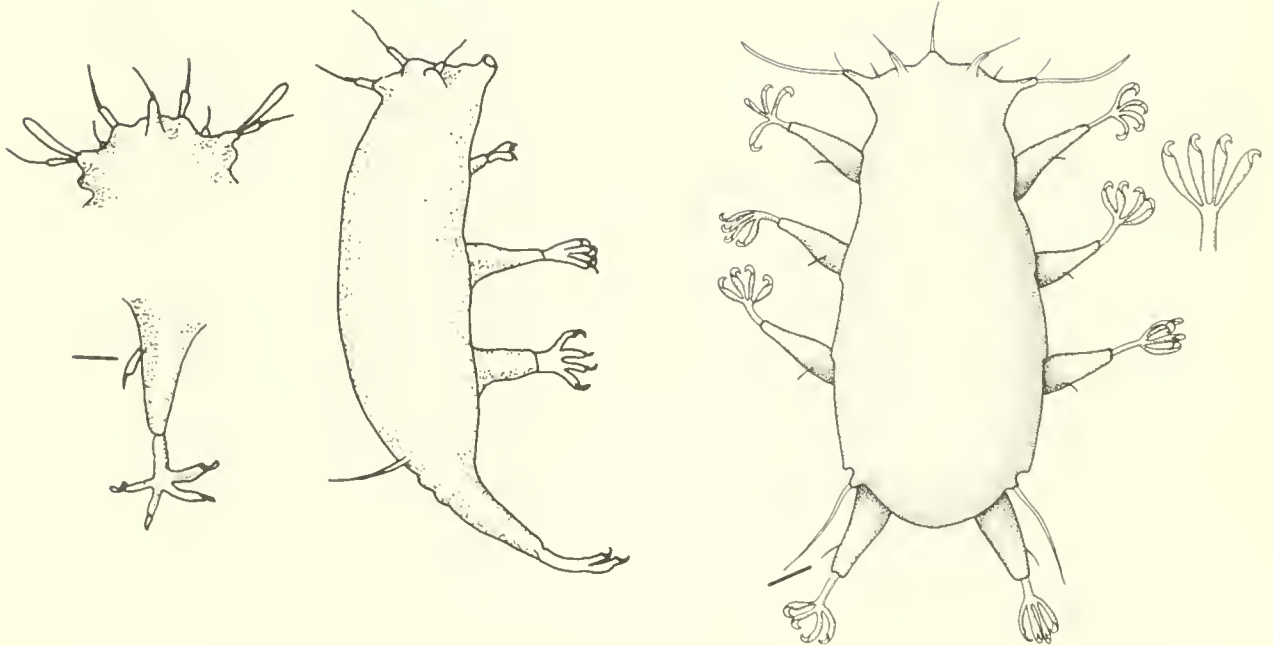
41 (40) Caudal spike absent 42



42 (41) Cirri e present in addition to three pairs of somatic spines *Halechiniscus gutteli*

42 (41) Cirri e present but additional somatic spines absent 43

43 (42) Enlarged papilla on shank of hindmost legs; body outline smooth *Halechiniscus perfectus*



43 (42) Simple leg spine present on shank of hindmost legs; body with slight sequential ridges . . . *Halechiniscus subterraneus*

ANNOTATED SYSTEMATIC LIST OF
MARINE TARDIGRADA OF
THE WORLD

The arrangement of the following list is based on the classification suggested by Ramazzotti (1972). Original descriptions of all species are available through references in the bibliography. Where subsequent descriptions are useful, they are cited parenthetically. Finally, the most typical habitat and geographical range is indicated for each species.

Order HETEROTARDIGRADA
Suborder Arthrotardigrada
FAMILY HALECHINISCIDAE

- Halechiniscus gutteli* Richters 1908. Interstitial, sandy intertidal. English Channel, eastern Atlantic, Mediterranean, Black Sea.
- Halechiniscus intermedius* Renaud-Mornant 1967b. Interstitial, subtidal, coralline sand at 4 m depth. Southern Pacific.
- Halechiniscus perfectus* Schulz 1955. Interstitial, sandy intertidal and subtidal at 170 m depth. North Sea, Mediterranean, southern Pacific, Indian Ocean.
- Halechiniscus remanei* Schulz 1955 (McGinty 1969). Interstitial, sandy intertidal to subtidal at 150 m depth. Mediterranean, eastern Atlantic, eastern Pacific.
- Halechiniscus subterraneus* Renaud-Debyser 1959b. Interstitial, intertidal in coralline sand. Western Atlantic.
- Pleocola limnoriae* Cantacuzène 1951. Commensal of isopod *Limnoria lignorum* and sandy intertidal to subtidal at 130 m depth. English Channel, western Atlantic.
- Actinarctus doryphorus* Schulz 1935 (Grell 1937). Interstitial, sandy intertidal to subtidal at 170 m depth. One report of possibly ectocommensal relationship with *Echinocyamus pusillus* (Grell 1937). North Sea, English Channel, eastern Atlantic.
- Tetrakentron synaptae* Cuénot 1892. Ectocommensal on tentacles of holothurian, *Leptosynapta galliennei*. English Channel.
- Styraconyx haploceros* Thulin 1942. Lichens near high tidal line. English Channel.
- Styraconyx paulae* Robotti 1971. Shallow subtidal, epizoic on coral.
- Styraconyx sargassi* Thulin 1942. Pelagic on algae, especially *Sargassum*. Western Atlantic, Mediterranean, Gulf of Mexico, eastern Pacific.
- Bathychiniscus tetronyx* Steiner 1926. Questionable description based on single observation from mud at 400 m depth in south Atlantic.
- Florarctus antillensis* Van der Land 1968 (Renaud-Mornant 1971). Interstitial in coralline sand, 3 m depth. Caribbean.
- Florarctus heimi* Delamare Deboutteville and Renaud-Mornant 1965 (Delamare Deboutteville and Renaud-Mornant 1966; Renaud-Mornant 1967b). Interstitial in coralline sand. Southern Pacific.
- Florarctus salvati* Delamare Deboutteville and Renaud-Mornant 1965 (Delamare Deboutteville and Renaud-

Mornant 1966; Renaud-Mornant 1967b). Interstitial in coralline sand. Southern Pacific.

Tanarctus arborspinosus Lindgren 1971. Interstitial, intertidal. Western Atlantic.

Tanarctus tauricus Renaud-Debyser 1959b. Interstitial, intertidal. Western Atlantic.

FAMILY BATILLIPEDIDAE

- Batillipes acaudatus* Pollock 1971. Interstitial, sandy intertidal. Northeastern Atlantic.
- Batillipes annulatus* DeZio 1962. Interstitial, sandy intertidal. Mediterranean.
- Batillipes bullacaudatus* McGinty and Higgins 1968 (Pollock 1970a). Interstitial, sandy intertidal. Northwestern and western Atlantic.
- Batillipes carnionensis* Fize 1957. Interstitial, sandy intertidal. Mediterranean, Indian Ocean.
- Batillipes dicrocercus* Pollock 1970a. Interstitial, sandy intertidal. Northwestern Atlantic.
- Batillipes friaufi* Riggan 1962. Interstitial, sandy intertidal. Western Atlantic.
- Batillipes gilmartini* McGinty 1969. Interstitial, sandy intertidal. Eastern Pacific.
- Batillipes littoralis* Renaud-Debyser 1959a. Sandy intertidal, interstitial. Eastern Atlantic.
- Batillipes mirus* Richters 1909 (Marcus 1927; Rudescu 1964; McGinty and Higgins 1968; Pollock 1970a, b). Sandy intertidal and shallow subtidal, interstitial. Baltic, North Sea, Black Sea, Mediterranean, Atlantic, Indian Ocean.
- Batillipes pennaki* Marcus 1946 (DeZio 1962; Pollock 1970a, b). Interstitial, sandy intertidal. Northern and southern Atlantic, Mediterranean, Indian Ocean.
- Batillipes phreaticus* Renaud-Debyser 1959a (Riemann 1966; Pollock 1971). Intertidal, interstitial in sand. Northeastern Atlantic, North Sea.
- Batillipes similis* Schulz 1955. Sandy intertidal, interstitial. Mediterranean.
- Batillipes tubermatis* Pollock 1971 (Riemann 1966). Sandy intertidal, shallow subtidal. North Sea, northeastern Atlantic.
- Orzeliscus belopus* Bois-Reymond Marcus 1952 (Renaud-Mornant 1967b). Interstitial in sand, intertidal and shallow subtidal. Northeastern, western, and southwestern Atlantic.
- Orzeliscus septentrionalis* Schulz 1953b. Interstitial in sand, intertidal. North Sea.

FAMILY CORONARCTIDAE

Coronarctus tenellus Renaud-Mornant 1974. Abyssal mud. Southern Atlantic, Indian Ocean.

FAMILY STYGARCTIDAE

- Stygarctus bradyopus* Schulz 1951 (Renaud-Mornant and Anselme-Moizan 1969). Interstitial, intertidal. North Sea, northwestern and northeastern Atlantic, southern Pacific.
- Stygarctus granulatus* Pollock 1970a (Pollock 1970b). Interstitial, intertidal. Northwestern Atlantic.

- Parastygarctus higginsi* Renaud-Debyser 1965a (Renaud-Debyser 1965b; Renaud-Mornant 1967a). Interstitial, intertidal. Southwestern and northeastern Indian.
- Parastygarctus sterreii* Renaud-Mornant, 1970. Sandy interstitial. Mediterranean, western Atlantic.

Suborder Echiniscoidea

FAMILY OREELLIDAE

- Echiniscoidea sigismundi* (Schultze 1865) (Marcus 1927; Rudescu 1964; Pollock 1975). Intertidal on green and blue-green algae growing on barnacles, piers, seawalls, etc. Cosmopolitan.
- Archechiniscus marci* Schulz 1953a (Renaud-Mornant 1967b). Interstitial, sandy intertidal to shallow subtidal (18 m). Southern and eastern Pacific, Caribbean.
- Anisonyches diakidius* Pollock 1975. Interstitial in coralline sand. Western Atlantic, eastern Pacific.

FAMILY ECHINISCIDAE

- Echiniscus quadrispinosus* Richters 1902. A moss water-film species found in marine setting only once (Renaud-Debyser 1964). Eastern Atlantic.

Order EUTARDIGRADA

FAMILY MACROBIOTIDAE

- Hypsibius appelloefi* (Richters 1908) (Hallas 1971). Intertidal. North Sea.
- Hypsibius geddesi* Hallas 1971. Intertidal, holdfast of *Laminaria* and interstitial in sand. Norwegian Sea, Kattegat.
- Hypsibius stenostomus* (Richters 1908) (Geddes 1968; Hallas 1971). Interstitial in sand or on brown algae. Baltic, North Sea, Black Sea.

LIST OF MARINE TARDIGRADA REPORTED FROM THE NORTHEASTERN UNITED STATES

- Batillipes bullacaudatus* — Woods Hole, Mass. (McGinty and Higgins 1968; Pollock 1970a).
- Batillipes dicrocercus* — Woods Hole, Mass. (Pollock 1970a).
- Batillipes mirus* — Woods Hole, Mass. (Marcus 1946; Pollock 1970a).
- Batillipes pennaki* — Woods Hole, Mass. (Marcus 1946; Pollock 1970a); Hampton Beach, Seabrook, N.H. (Pollock 1970a).
- Echiniscoidea sigismundi* — Woods Hole, Mass. (McGinty and Higgins, 1968); Rye Harbor, Rye, N.H.; and Seawall Beach, Acadia National Park, Me. (Pollock, unpubl. paper).
- Stygarctus granulatus* — Woods Hole, Mass. (Uhlig 1968—as *S. bradypus*; McGinty and Higgins 1968—as *S. bradypus*; Pollock 1970a).

SELECTED BIBLIOGRAPHY

- BERTOLANI, R.
1970. Mitosi somatiche e costanza cellulare numerica nei Tardigradi. Rend. Acc. Naz. Lincei, Ser. 8^a, 48:739-742.
- BOIS-REYMOND MARCUS, E.
1952. On South American Malacopoda. Bol. Fac. Filos. Ciênc. Letras, Univ. Sao Paulo, Ser. Zool. 17:189-210.
- CANTACUZÈNE, A.
1951. Tardigrade marin nouveau, commensal de *Limnoria lignorum* (Rathke). C. R. Acad. Sci. Paris 232:1699-1700.
- CUÉNOT, L.
1892. Tardigrade. In: Commensaux et parasites des Echinodermes (II). Rev. Biol. Nord. Fr. 5:16-19.
- DELAMARE DEBOUTTEVILLE, C., and J. RENAUD-MORNANT.
1965. Un remarquable genre de Tardigrades des sables coralliens de Nouvelle-Calédonie. C. R. Acad. Sci. Paris 260:2581-2583.
1966. Un nouveau genre de Tardigrades des sables détritiques coralliens de Nouvelle-Calédonie. Cah. Pac. 9:149-156.
- DEZIO, S.
1962. Descrizione de *Batillipes annulatus*, n. sp. e note su *Batillipes pennaki* Marcus, nuovo rinvenimento nel Mediterraneo (Heterotardigrada). Annu. Ist. Mus. Zool. Univ. Napoli 14:1-7.
- FIZE, A.
1957. Description d'une espèce nouvelle de Tardigrade *Batillipes carnonensis* n. sp. Bull. Soc. Zool. Fr. 82:430-433.
- GEDDES, D. C.
1968. A note on the marine tardigrade *Hypsibius (Isophypsibius) stenostomus* (Richters) from the Tromsø area, Northern Norway. Astarte 33:1-3.
- GRAY, J. S., and R. M. RIEGER.
1971. A quantitative study of the meiofauna of an exposed sandy beach, at Robin Hood's Bay, Yorkshire. J. Mar. Biol. Assoc. U.K. 51:1-19.
- GRELL, K. G.
1937. Beiträge zur Kenntnis von *Actinarctus doryphorus* E. Schulz nebst Bemerkungen zur Tardigradenfauna des Helgoländer Skitt-Gatts. Zool. Anz. 117:143-154.
- HALLAS, T.
1971. Notes on the marine *Hypsibius stenostomus*-complex, with a description of a new species (Tardigrada, Macrobiotidae). Steenstrupia 1:201-206.
- HULINGS, N. C., and J. S. GRAY.
1971. A manual for the study of meiofauna. Smithson. Contrib. Zool. 78:1-84.
- LINDGREN, E. W.
1971. Psammolittoral marine Tardigrades from North Carolina and their conformity to worldwide zonation patterns. Cah. Biol. Mar. 12:481-496.
- MARCUS, E.
1927. Zur Anatomie und Ökologie mariner Tardigraden. Zool. Jahrb. Abt. Syst. Oekol. Geogr. Tiere 53:487-558.
1936. Tardigrada. Tierreich 66:1-340.
1946. *Batillipes pennaki*, a new marine Tardigrade from the north and south American Atlantic coast. Comun. Zool. Mus. Hist. Nat. Montev. 2:1-3.
- McGINTY, M. M.
1969. *Batillipes gilmartini*, a new marine tardigrade from a California beach. Pac. Sci. 23:394-396.
- McGINTY, M. M., and R. P. HIGGINS.
1968. Ontogenetic variation of taxonomic characters of two marine tardigrades with the description of *Batillipes bullacaudatus* n. sp. Trans. Am. Microsc. Soc. 87:252-262.
- POLLOCK, L. W.
1970a. *Batillipes dicrocercus* n. sp., *Stygarctus granulatus* n. sp. and other Tardigrada from Woods Hole, Massachusetts, USA. Trans. Am. Microsc. Soc. 89:38-52.
1970b. Reproductive anatomy of some marine Heterotardigrada. Trans. Am. Microsc. Soc. 89:308-316.
1970c. Distribution and dynamics of interstitial Tardigrada at Woods Hole, Massachusetts, U.S.A. Ophelia 7:145-165.
1971. On some British marine Tardigrada, including two new species of *Batillipes*. J. Mar. Biol. Assoc. U.K. 51:93-103.

1975. Observations on marine Heterotardigrada, including a new genus from the western Atlantic Ocean. Cah. Biol. Mar. 16:121-132.
- RAMAZZOTTI, G.
1972. Il phylum Tardigrada. Mem. Ist. Ital. Idrobiol. 28:1-732.
- RENAUD-DEBYSER, J.
1959a. Sur quelques Tardigrades du bassin d'Arcachon. Vie Milieu 10:135-146.
1959b. Études sur la faune interstitielle des Iles Bahamas. III. Tardigrades. Vie Milieu 10:296-302.
1964. Note sur la faune interstitielle du Bassin d'Arcachon et description d'un Gastrotriche nouveau. Cah. Biol. Mar. 5:111-123.
1965a. *Parastygarcus higginsi* n. g., n. sp. Tardigrade marin interstitiel de Madagascar. C. R. Acad. Sci. Paris 260:955-957.
1965b. Étude sur un Stygarctidé (Tardigrada) nouveau de Madagascar. Bull. Soc. Zool. Fr. 90:31-38.
- RENAUD-MORNANT, J.
1967a. *Parastygarcus higginsi* Renaud-Debyser, 1965, sur la côte orientale de Malaisie. Description de la femelle. Bull. Mus. Natl. Hist. Nat., Paris 39:205-208.
1967b. Tardigrades de la Baie Saint-Vincent Nouvelle-Calédonie. Éditions de Fondat. Singer-Polignac, Paris:103-119.
1970. *Parastygarcus sterreeri* n. sp., Tardigrade marin nouveau de l'Adriatique. Cah. Biol. Mar. 11:355-360.
1971. Tardigrades marins des Bermudes. Bull. Mus. Natl. Hist. Nat., Paris 42:1268-1276.
1974. Une nouvelle famille de Tardigrades marins abyssaux: les Coronarctidae fam. nov. (Heterotardigrada). C. R. Acad. Sci. Paris 278:3087-3090.
- RENAUD-MORNANT, J., and M.-N. ANSELME-MOIZAN.
1969. Stades larvaires du Tardigrade marin *Stygarcus bradypus* Schulz et position systématique des Stygarctidae. Bull. Mus. Natl. Hist. Nat., Paris 41:883-893.
- RENAUD-MORNANT, J., and L. W. POLLOCK.
1971. A review of the systematics and ecology of marine Tardigrada. Smithson. Contrib. Zool. 76:109-117.
- RICHTERS, F.
1902. Beiträge zur Kenntnis der fauna der Umgebund von Frankfurt a. M. Ber. Seckenb. Naturforsch. Ges. 33(2):1-21.
1908. Marine Tardigraden. Zool. Anz. 33:77-85.
1909. Tradigraden-Studien. Ber. Senckenb. Naturforsch. Ges. 40(2):28-44.
- RIEMANN, F.
1966. Die interstitielle Fauna im Elbe-Aestuar. Verbreitung und Systematik. Arch. Hydrobiol., Suppl. 31, 279 p. (see p. 223-225 and Fig. 57).
- RIGGIN, G. T.
1962. Tardigrada of southwest Virginia: with the addition of a description of a new marine species from Florida. Tech. Bull. Va. Agric. Exp. Stn. 152:1-145.
- ROBOTTI, C.
1971. Nuova specie di tardigrado marino: *Styraconyx paulae* (Heterotardigrada). Ann. Mus. Civ. Stor. Nat. "Giacomo Doria" 4(199):1-3.
- RUDESCU, L.
1964. Tardigrada. Fauna Republicii Socialiste Populare Romania, Arthropoda 4(7):1-400.
- SCHMIDT, P.
1968. Die quantitative Verteilung und Populationsdynamik des Mesopsammons am Gezeiten-Sandstrand der Nordseeinsel Sylt I. Faktorengefüge und biologische Gliederung des Lebensraumes. Int. Rev. Gesamten Hydrobiol. 53:723-779.
1969. Die quantitative Verteilung und Populationsdynamik des Mesopsammons am Gezeiten-Sandstrand der Nordsee-Insel Sylt II. Quantitative Verteilung und Populationsdynamik einzelner Arten. Int. Revue Gesamten Hydrobiol. 54:95-174.
- SCHULTZE, M.
1865. Echiniscus sigmundi, ein Arctiscoide der Nordsee. Ark. Mikroc. Anat. 1:428-436.
- SCHULZ, E.
1935. Actinarctus doryphorus nov. gen. nov. spec., ein merkwürdiger Tardigrad aus der Nordsee. Zool. Anz. 111:285-288.
1951. Über *Stygarcus bradypus* n. g. n. sp., einen Tardigraden aus dem Küstengrundwasser, und seine phylogenetische Bedeutung. Kiel. Meeresforsch. 8:86-97.
1953a. Eine neue Tardigraden-Gattung von der pazifischen Klüste. Zool. Anz. 151:306-310.
1953b. *Orzeliscus septentrionalis* nov. spec., ein neuer mariner Tardigrad an der deutschen Nordseeküste. Kiel. Meeresforsch. 9:288-292.
1955. Studien an marinen Tardigraden. Kiel. Meeresforsch. 11:74-79.
- STEINER, G.
1926. *Bathyechiniscus tetronyx* n. g. n. sp. Ein neuer mariner Tardigrade. Dtsch. Südpolar-Exped. 18:478-481.
- THULIN, G.
1942. Ein neuer mariner Tardigrad. Medd. Goeteb. Mus. Zool. 99:1-10.
- UHLIG, G.
1968. Quantitative methods in the study of interstitial fauna. Trans. Am. Microsc. Soc. 87:226-232.
- VAN DER LAND, J.
1968. *Floraretus antillensis*, a new tardigrade from the coral sand of Curaçao. Stud. Fauna Curaçao Caribb. Isl. 25:140-146.

INDEX TO SCIENTIFIC NAMES

<i>Actinarctus</i>		
<i>doryphorus</i>	15, 21	
<i>Anisonyches</i>		
<i>diakidius</i>	6, 22	
<i>Archechiniscus</i>		2
<i>marci</i>	12, 22	
<i>Arthrotardigrada</i>		21
<i>Bathyechiniscus</i>		
<i>tetrynx</i>	13, 21	
<i>Batillipedidae</i>		21
<i>Batillipes</i>		2
<i>acaudatus</i>	7, 21	
<i>annulatus</i>	8, 21	
<i>bullacaudatus</i>	8, 21, 22	
<i>carmonensis</i>	10, 21	
<i>dicrocerus</i>	10, 21, 22	
<i>friaufi</i>	11, 21	
<i>gilmartini</i>	9, 21	
<i>littoralis</i>	11, 21	
<i>mirus</i>	9, 21, 22	
<i>pennaki</i>	9, 21, 22	
<i>phreaticus</i>	11, 21	
<i>similis</i>	10, 21	
<i>tubernatis</i>	7, 21	
<i>Coronarctidae</i>		21
<i>Coronarctus</i>		2
<i>tenellus</i>	6, 21	
<i>Echiniscidae</i>		22
<i>Echiniscoidea</i>		22
<i>Echiniscoidea</i>		2
<i>sigismundi</i>	5, 22	
<i>Echiniscus</i>		6
<i>quadriscopinosus</i>	6, 22	
<i>Eutardigrada</i>		2, 22
<i>Florarctus</i>		
<i>antillensis</i>	18, 21	
<i>heimi</i>	18, 21	
<i>salvati</i>		17, 21
<i>Halechiniscidae</i>		21
<i>Halechiniscus</i>		2
<i>guiteli</i>	20, 21	
<i>intermedius</i>	19, 21	
<i>perfectus</i>	20, 21	
<i>remanei</i>	19, 21	
<i>subterraneus</i>	20, 21	
<i>Heterotardigrada</i>		21
<i>Hypsibius</i>		
<i>appelloefi</i>	5, 22	
<i>geddesi</i>	5, 22	
<i>stenostomus</i>	4, 22	
<i>Macrobiotidae</i>		22
<i>Oreellidae</i>		22
<i>Orzeliscus</i>		
<i>belopus</i>	12, 21	
<i>septentrionalis</i>	12, 21	
<i>Parastygarctus</i>		2
<i>higginsii</i>	3, 22	
<i>sterreri</i>	3, 22	
<i>Pleocola</i>		
<i>limnoriae</i>	17, 21	
<i>Stygarctidae</i>		21
<i>Stygarctus</i>		2
<i>bradypus</i>	4, 21, 22	
<i>granulatus</i>	4, 21, 22	
<i>Styraconyx</i>		
<i>haploceros</i>	14, 21	
<i>paulae</i>	14, 21	
<i>sargassi</i>	15, 22	
<i>Tanarctus</i>		
<i>arborspinosus</i>	16, 21	
<i>tauricus</i>	16, 21	
<i>Tetrakentron</i>		
<i>synaptae</i>	2, 13, 21	

ACKNOWLEDGMENTS

Preparation of the "Marine Flora and Fauna of the Northeastern United States" is being coordinated by the following Board:

Robert T. Wilce, Department of Botany, University of Massachusetts, Amherst, Mass.

Coordinator: Melbourne R. Carriker, Marine Studies Center, College of Marine Studies, University of Delaware, Lewes, DE 19958

Advisers: Marie B. Abbott, Marine Biological Laboratory, Woods Hole, Mass.
Arthur G. Humes, Boston University Marine Program, Marine Biological Laboratory, Woods Hole, Mass.
Wesley N. Tiffney, Department of Biology, Boston University, Boston, Mass.
Ruth D. Turner, Museum of Comparative Zoology, Harvard University, Cambridge, Mass.
Roland L. Wigley, National Marine Fisheries Service, Biological Laboratory, Woods Hole, Mass.

The Board established the format for the "Marine Flora and Fauna of the Northeastern United States," invites systematists to collaborate in the preparation of manuals, reviews manuscripts, and advises the Scientific Editor of the National Marine Fisheries Service.

I express my gratitude to Melbourne R. Carriker who, as director of the Systematics-Ecology Program, generously provided laboratory space at the Marine Biological Laboratory, Woods Hole, Mass. during portions of this work. My thanks as well to the stenographic service at Drew University for their assistance in the preparation of this manuscript. Many of the illustrations were drawn by Susan P. Heller, formerly with the Systematics Ecology Program.

COORDINATOR'S COMMENTS

Publication of the "Marine Flora and Fauna of the Northeastern United States" is most timely in view of the growing universal emphasis on environmental work and the urgent need for more precise and complete identification of coastal organisms than has been available. It is mandatory, wherever possible, that organisms be identified accurately to species. Accurate scientific names unlock the great quantities of biological information stored in libraries, obviate duplication of research already done, and make possible prediction of attributes of organisms that have been inadequately studied.

Leland W. Pollock was awarded his Ph.D. from the University of

New Hampshire in 1969 for work on the biology of intertidal Tardigrada. Both this doctoral research and the majority of subsequent postdoctoral research was conducted in association with the Systematics-Ecology Program at the Marine Biological Laboratory in Woods Hole. In 1972, he moved to his present position as a member of the zoology faculty at Drew University, Madison, N.J. where his studies on aspects of the systematics and ecology of marine Tardigrada continue.

Manuals are available for purchase from the Superintendent of Documents, U.S. Government Printing Office, Washington, D.C. 20402. The manuals so far published in the series are listed below.

COOK, DAVID G., and RALPH O. BRINKHURST. Marine flora and fauna of the northeastern United States. Annelida: Oligochaeta.
BORROR, ARTHUR C. Marine flora and fauna of the northeastern United States. Protozoa: Ciliophora.
MOUL, EDWIN T. Marine flora and fauna of the northeastern United States. Higher plants of the marine fringe.
McCLOSKEY, LAWRENCE R. Marine flora and fauna of the northeastern United States. Pycnogonida.
MANNING, RAYMOND B. Marine flora and fauna of the northeastern United States. Crustacea: Stomatopoda.
WILLIAMS, AUSTIN B. Marine flora and fauna of the northeastern United States. Crustacea: Decapoda.
POLLOCK, LELAND W. Marine flora and fauna of the northeastern United States. Tardigrada.

370. Collecting and processing data on fish eggs and larvae in the California Current region. By David Kramer, Mary J. Kalin, Elizabeth G. Stevens, James R. Thraikill, and James R. Zweifel. November 1972, iv + 38 p., 38 figs., 2 tables. For sale by the Superintendent of Documents, U.S. Government Printing Office, Washington, D.C. 20402.
371. Ocean fishery management: Discussions and research. By Adam A. Sokolowski (editor). (17 papers, 24 authors.) April 1973, vi + 173 p., 38 figs., 32 tables, 7 appendix tables.
372. Fishery publications, calendar year 1971: Lists and indexes. By Thomas A. Manar. October 1972, iv + 24 p., 1 fig. For sale by the Superintendent of Documents, U.S. Government Printing Office, Washington, D.C. 20402.
374. Marine flora and fauna of the northeastern United States. Annelida: Oligochaeta. By David G. Cook and Ralph O. Brinkhurst. May 1973, iii + 23 p., 82 figs. For sale by the Superintendent of Documents, U.S. Government Printing Office, Washington, D.C. 20402.
375. New Polychaeta from Beaufort, with a key to all species recorded from North Carolina. By John H. Day. July 1973, xiii + 140 p., 18 figs., 1 table. For sale by the Superintendent of Documents, U.S. Government Printing Office, Washington, D.C. 20402.
376. Bottom water temperatures on the continental shelf, Nova Scotia to New Jersey. By John B. Colton, Jr. and Ruth R. Stoddard. June 1973, iii + 55 p., 15 figs., 12 appendix tables. For sale by the Superintendent of Documents, U.S. Government Printing Office, Washington, D.C. 20402.
377. Fishery publications, calendar year 1970: Lists and indexes. By Mary Ellen Engett and Lee C. Thorson. December 1972, iv + 34 p., 1 fig. For sale by the Superintendent of Documents, U.S. Government Printing Office, Washington, D.C. 20402.
378. Marine flora and fauna of the northeastern United States. Protozoa: Ciliophora. By Arthur C. Borror. September 1973, iii + 62 p., 5 figs. For sale by the Superintendent of Documents, U.S. Government Printing Office, Washington, D.C. 20402.
379. Fishery publications, calendar year 1969: Lists and indexes. By Lee C. Thorson and Mary Ellen Engett. April 1973, iv + 31 p., 1 fig. For sale by the Superintendent of Documents, U.S. Government Printing Office, Washington, D.C. 20402.
380. Fishery publications, calendar year 1968: Lists and indexes. By Mary Ellen Engett and Lee C. Thorson. May 1973, iv + 24 p., 1 fig. For sale by the Superintendent of Documents, U.S. Government Printing Office, Washington, D.C. 20402.
381. Fishery publications, calendar year 1967: Lists and indexes. By Lee C. Thorson and Mary Ellen Engett. July 1973, iv + 22 p., 1 fig. For sale by the Superintendent of Documents, U.S. Government Printing Office, Washington, D.C. 20402.
382. Fishery publications, calendar year 1966: Lists and indexes. By Mary Ellen Engett and Lee C. Thorson, July 1973, iv + 19 p., 1 fig. For sale by the Superintendent of Documents, U.S. Government Printing Office, Washington, D.C. 20402.
383. Fishery publications, calendar year 1965: Lists and indexes. By Lee C. Thorson and Mary Ellen Engett. July 1973, iv + 12 p., 1 fig. For sale by the Superintendent of Documents, U.S. Government Printing Office, Washington, D.C. 20402.
384. Marine flora and fauna of the northeastern United States. Higher plants of the marine fringe. By Edwin T. Moul. September 1973, iii + 60 p., 109 figs. For sale by the Superintendent of Documents, U.S. Government Printing Office, Washington, D.C. 20402.
385. Fishery publications, calendar year 1972: Lists and indexes. By Lee C. Thorson and Mary Ellen Engett. November 1973, iv + 23 p., 1 fig. For sale by the Superintendent of Documents, U.S. Government Printing Office, Washington, D.C. 20402.
386. Marine Flora and fauna of the northeastern United States. Pycnogonida. By Lawrence R. McCloskey. September 1973, iii + 12 p., 1 fig. For sale by the Superintendent of Documents, U.S. Government Printing Office, Washington, D.C. 20402.
387. Marine flora and fauna of the northeastern United States. Crustacea: Stomatopoda. By Raymond B. Manning. February 1974, iii + 6 p., 10 figs. For sale by the Superintendent of Documents, U.S. Government Printing Office, Washington, D.C. 20402.
388. Proceedings of the first U.S. Japan meeting on aquaculture at Tokyo, Japan, October 18-19, 1971. William N. Shaw (editor). (18 papers, 14 authors.) February 1974, iii + 133 p. For sale by the Superintendent of Documents, U.S. Government Printing Office, Washington, D.C. 20402.
389. Marine flora and fauna of the northeastern United States. Crustacea: Decapoda. By Austin B. Williams. April 1974, iii + 50 p., 111 figs. For sale by the Superintendent of Documents, U.S. Government Printing Office, Washington, D.C. 20402.
390. Fishery publications, calendar year 1973: Lists and indexes. By Mary Ellen Engett and Lee C. Thorson. September 1974, iv + 14 p., 1 fig. For sale by the Superintendent of Documents, U.S. Government Printing Office, Washington, D.C. 20402.



UNITED STATES
DEPARTMENT OF COMMERCE
NATIONAL OCEANIC AND ATMOSPHERIC ADMINISTRATION
NATIONAL MARINE FISHERIES SERVICE
SCIENTIFIC PUBLICATIONS STAFF
ROOM 450
1107 N.E. 45TH ST
SEATTLE WA 98105
OFFICIAL BUSINESS

POSTAGE AND FEES PAID
U.S. DEPARTMENT OF COMMERCE
COM 210

THIRD CLASS
BULK RATE



Marine Biological Laboratory S
Library - Periodicals
Woods Hole, Ma 02543

