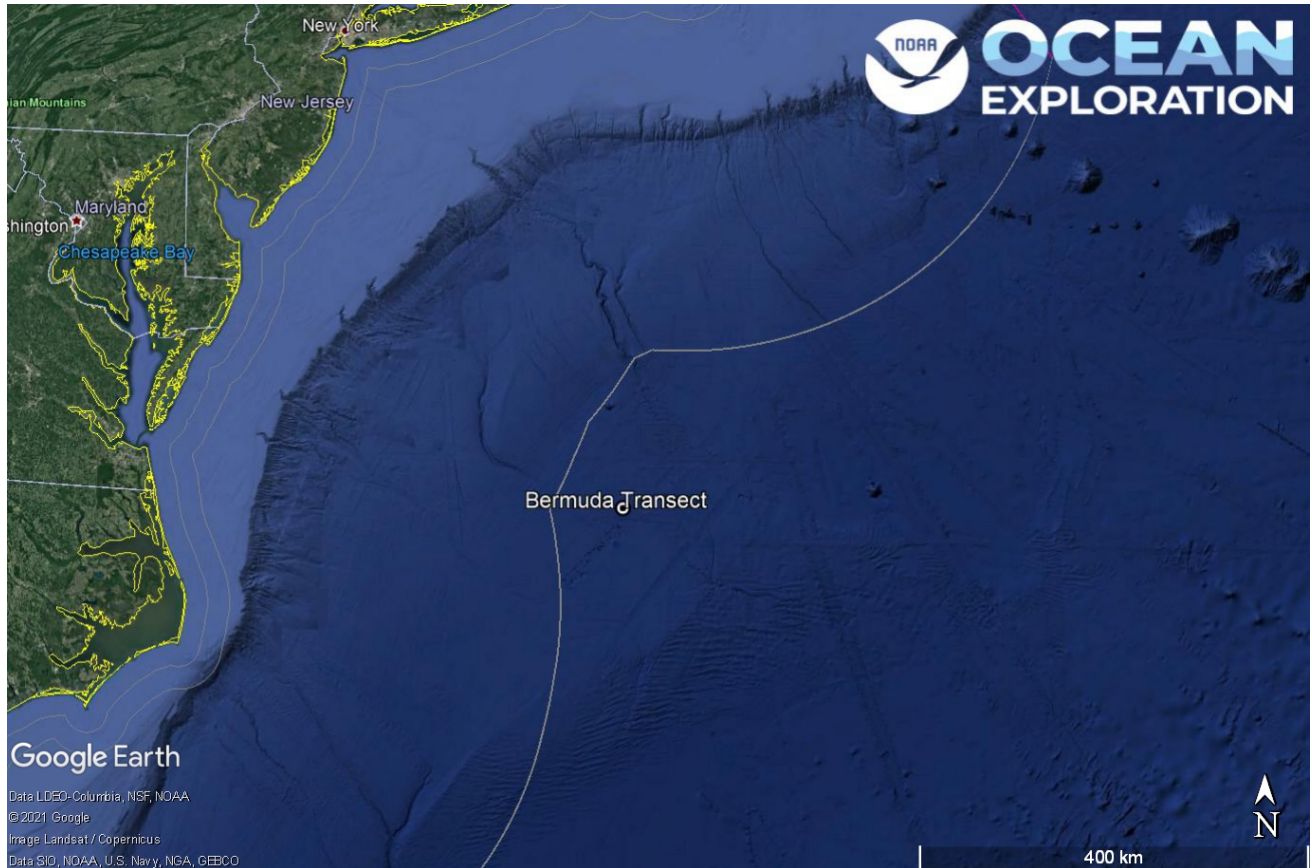


ROV Dive Summary, EX-21-03, Dive 05, June 18, 2021

General Location Map



Dive 05 named Bermuda Transect. This site is on the Sohm Abyssal Plain outside of the U.S. Exclusive Economic Zone.

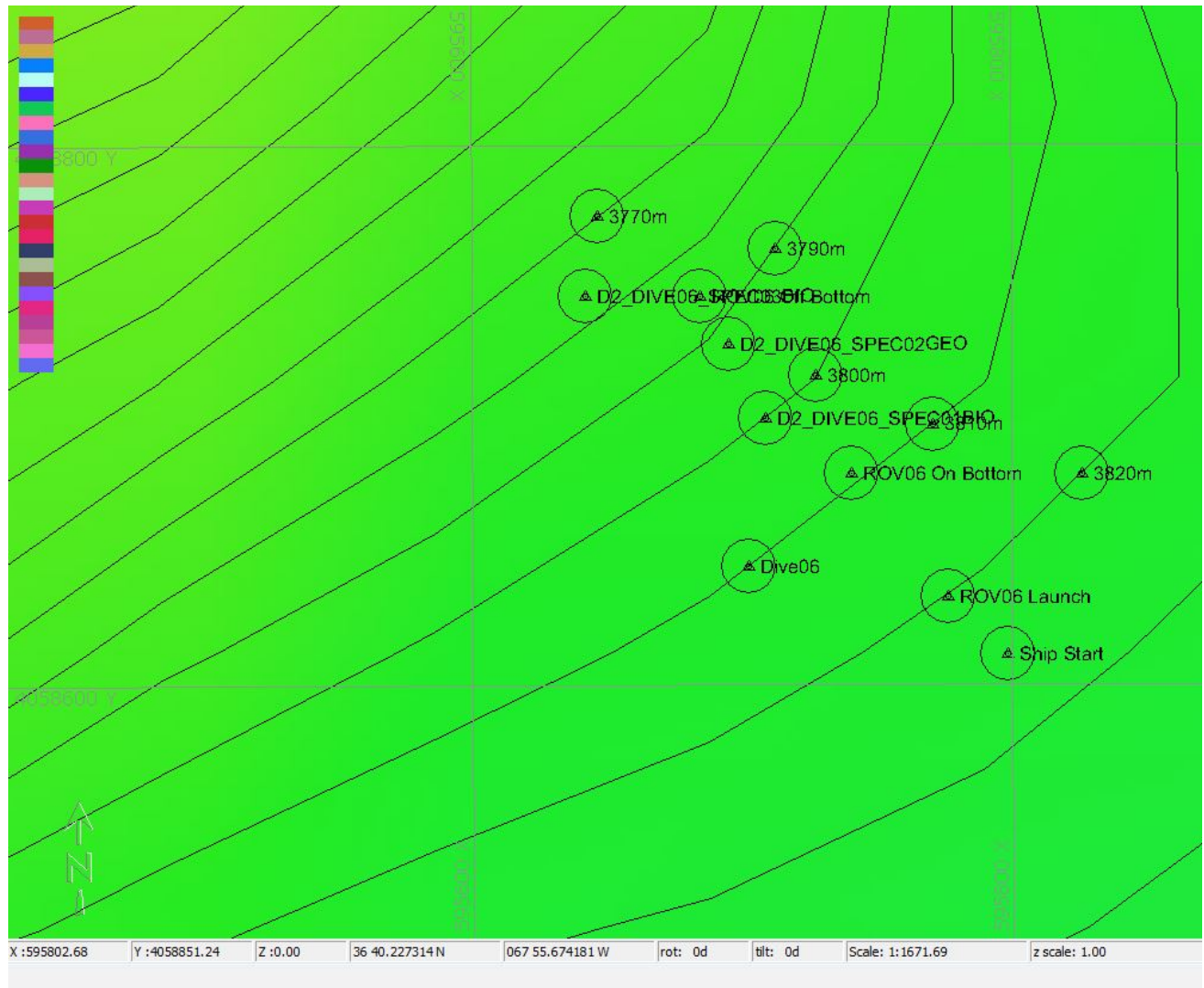
Dive Information

Site Name	Bermuda Transect
General Area Descriptor	Abyssal Plain, On historic Bermuda/Gay Head seafloor and water column sampling transect.
Science Team Leads	Karl McLetchie
Expedition Coordinator	Kasey Cantwell/Matt Dornback
ROV Dive Supervisor	Karl McLetchie
Mapping Lead	Shannon Hoy

Equipment Deployed

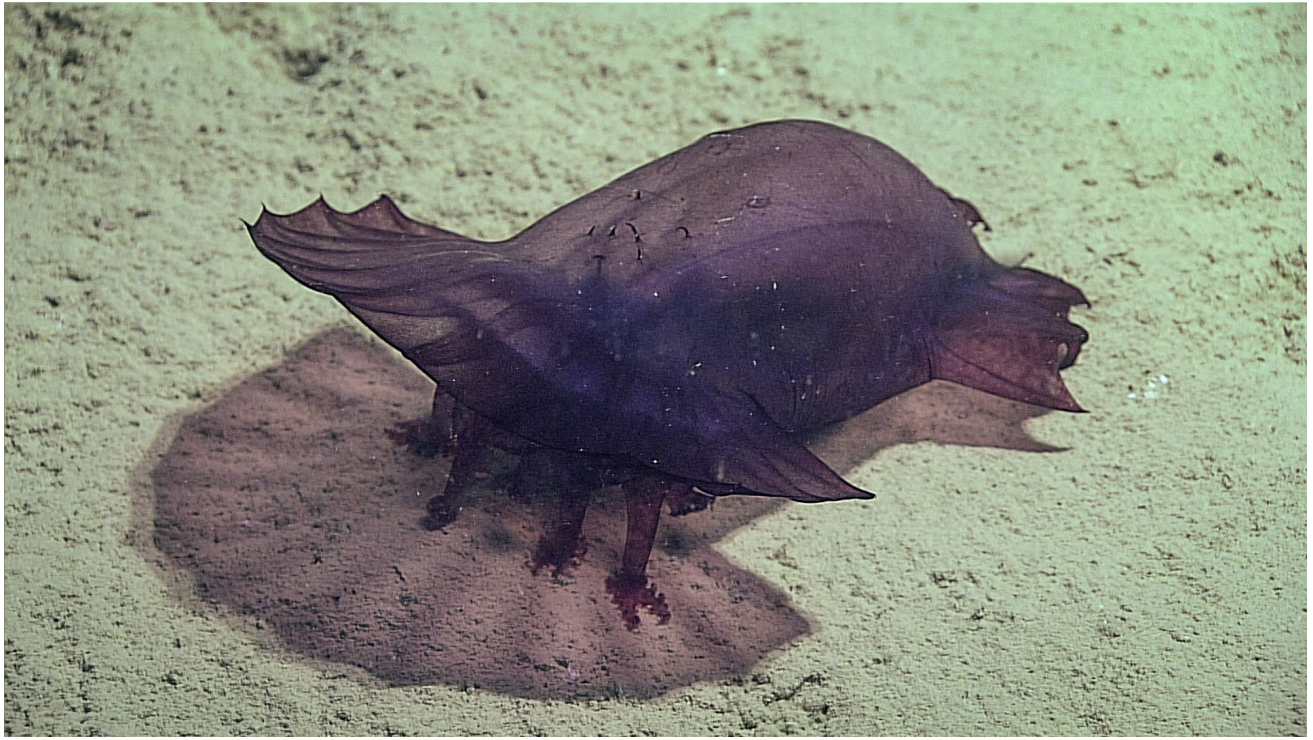
ROV	<i>Deep Discoverer</i>
Camera Platform	<i>Seirios</i>
ROV Measurements	The following ROV measurements, data streams and equipment are used on each ROV deployment: CTD, depth, scanning sonar, USBL position, altitude, heading, attitude, high-resolution cameras, low resolution cameras, manipulator arms, suction sampler, sample drawers and thrusters. The section below notes if any of these sensors were malfunctioning or not operational
Equipment Malfunctions	Turbidity sensor

Close-up Map of Main Dive Site



Hypack map of the Dive 05 waypoints. Depth is displayed by contour lines at 10 meter increments and by colors. Warm colors are shallower and cool colors are deeper.

Representative Photos of the Dive



A holothurian extending it's feet and grabbing sediment to ingest.



Flat seafloor of the Sohm Abyssal Plain.

Samples Collected -

No samples were collected

Niskin Sampling Summary

No Niskin bottles were used

Scientists Involved (provide name, email, affiliation)

No scientists were involved in this dive

Please direct inquiries to:

NOAA Office of Ocean Exploration & Research
1315 East-West Highway, SSMC3 RM 10210
Silver Spring, MD 20910
oceanexplorer@noaa.gov