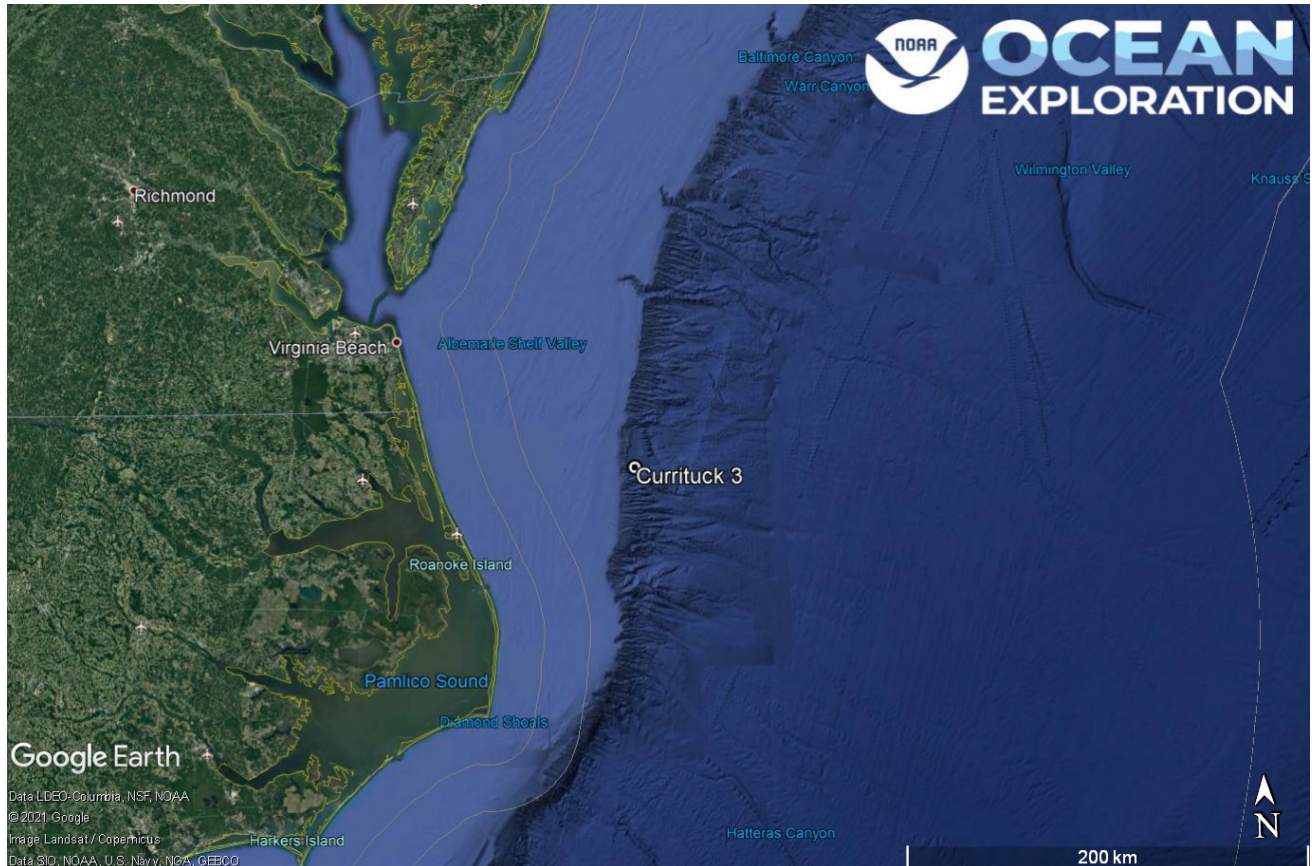


ROV Dive Summary, EX-21-03, Dive 03, June 16, 2021

General Location Map



Dive 03 named Currituck 3 on the shelf off of the North Carolina coast.

Dive Information

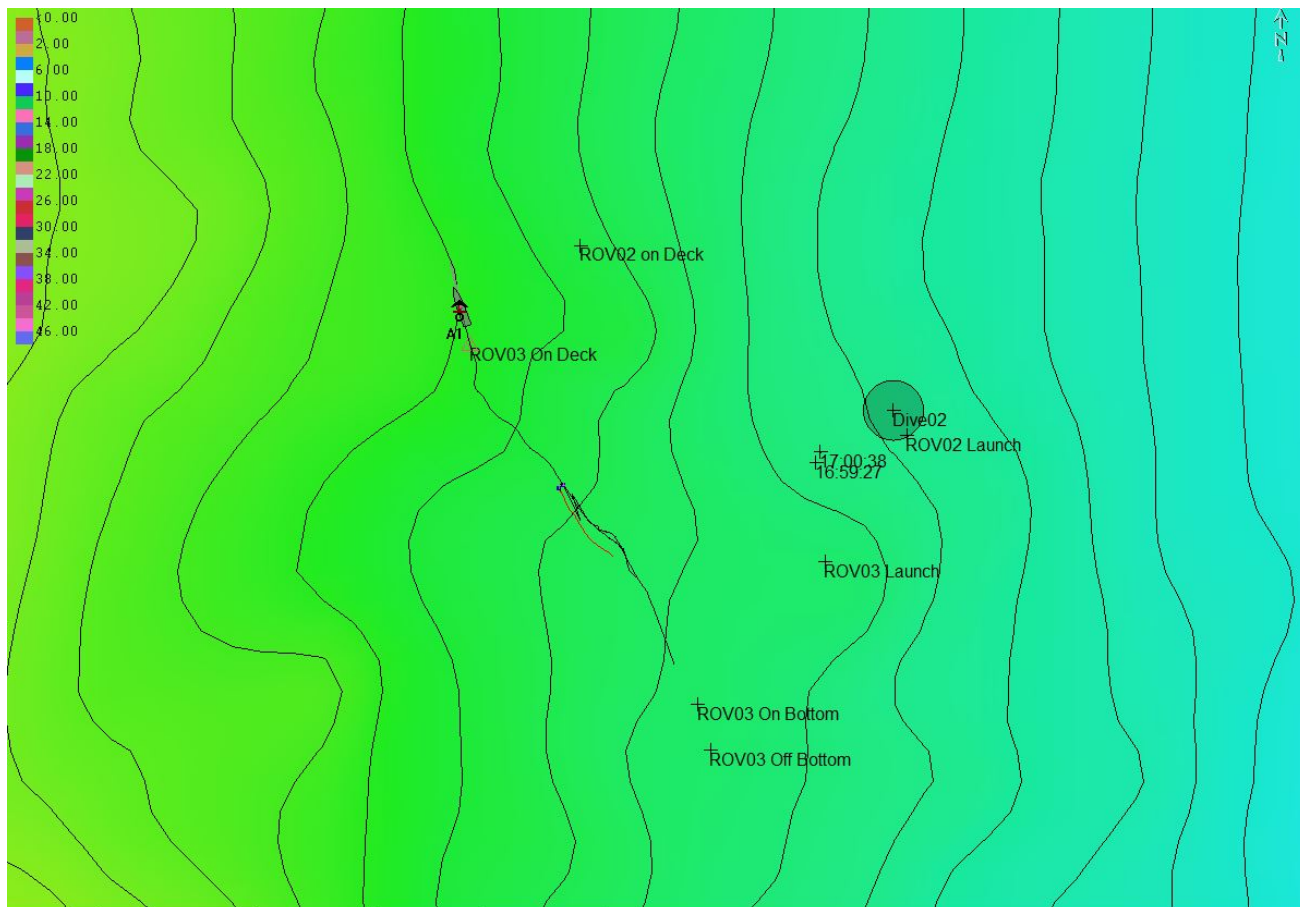
Site Name	Currituck 3
General Area Descriptor	US Mid-Atlantic, Currituck Landslide
Science Team Leads	Karl McLetchie
Expedition Coordinator	Kasey Cantwell/Matt Dornback
ROV Dive Supervisor	Karl McLetchie
Mapping Lead	Shannon Hoy

Notable Observations	None
Community and habitat observations	Corals and Sponges - Absent Chemosynthetic Community - Absent High biodiversity Community - Absent Active Seep or Vent - Absent Extinct Seep or Vent - Absent Hydrates - Absent
CMECS Feature Type(s)	Flat, Submarine Slide Deposit
SeaTube Link (science annotation system)	https://data.oceannetworks.ca/SeaTubeV3?resourceTypeId=600&resourceId=2163

Equipment Deployed

ROV	<i>Deep Discoverer</i>
Camera Platform	<i>Seirios</i>
ROV Measurements	The following ROV measurements, data streams and equipment are used on each ROV deployment: CTD, depth, scanning sonar, USBL position, altitude, heading, attitude, high-resolution cameras, low resolution cameras, manipulator arms, suction sampler, sample drawers and thrusters. The section below notes if any of these sensors were malfunctioning or not operational
Equipment Malfunctions	Turbidity sensor

Close-up Map of Main Dive Site



Hypack map of the Dive 02 and Dive 03 waypoints. Depth is displayed by contour lines at 10 meter increments and by colors. Warm colors are shallower and cool colors are deeper.

Representative Photos of the Dive

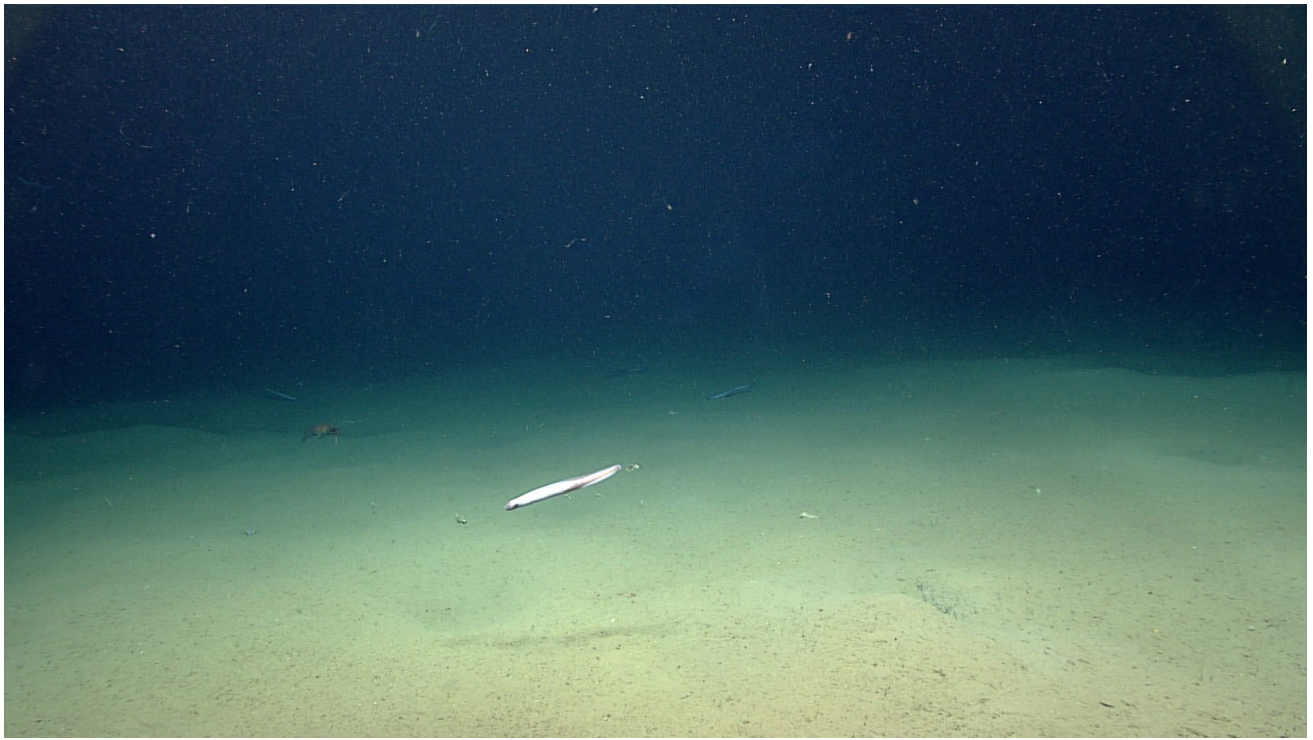


Image of the seafloor with fish swimming and a crab in the background.

Samples Collected -

No samples were collected

Niskin Sampling Summary

No Niskin bottles were used

Scientists Involved (provide name, email, affiliation)

Name	Email	Affiliation
Jason Chaytor	jchaytor@usgs.gov	USGS

Please direct inquiries to:

NOAA Office of Ocean Exploration & Research
1315 East-West Highway, SSMC3 RM 10210
Silver Spring, MD 20910
oceanexplorer@noaa.gov

