

CORRIGENDA**Corrigendum**

THOMAS M. HAMILL

Physical Sciences Division, NOAA/Earth System Research Laboratory, Boulder, Colorado

(Manuscript received and in final form 7 July 2016)

In the article [Hamill \(2014\)](#), Fig. 1 therein should be replaced with [Fig. 1](#) here. Other results are unaffected.

REFERENCE

Hamill, T. M., 2014: Performance of operational model precipitation forecast guidance during the 2013 Colorado Front-Range floods. *Mon. Wea. Rev.*, **142**, 2609–2618, doi:[10.1175/MWR-D-14-00007.1](https://doi.org/10.1175/MWR-D-14-00007.1).

Corresponding author e-mail: Dr. Thomas M. Hamill, tom.hamill@noaa.gov

Accumulated precipitation for period starting 12 UTC 08 Sep 2013, ending 12 UTC 16 Sep 2013

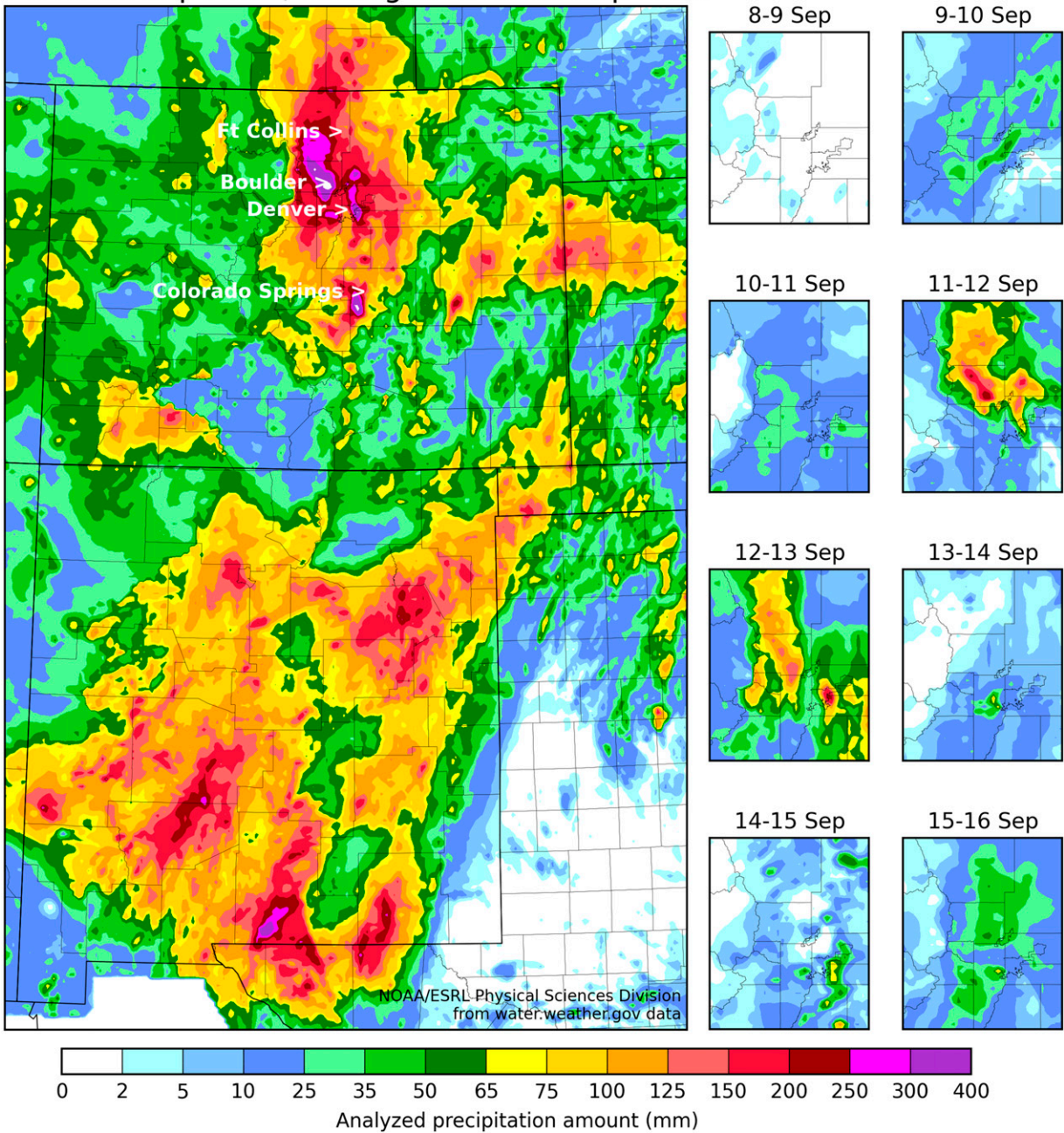


FIG. 1. Accumulated precipitation analyses. The large panel shows the accumulated precipitation, taken from AHPS analyses, for the period 1200 UTC 8 Sep–1200 UTC 16 Sep 2013. The smaller panels show the 1200–1200 UTC accumulated precipitation for individual days, focusing on the Boulder–Denver metro area and the northern Front Range. Boulder County is in the center of these smaller panels.