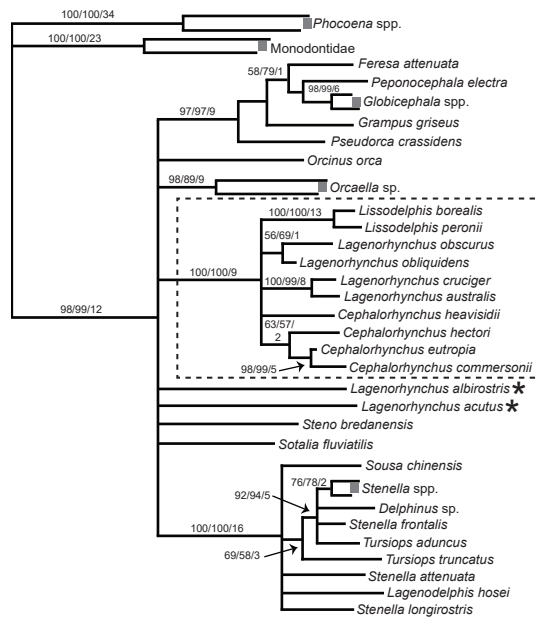
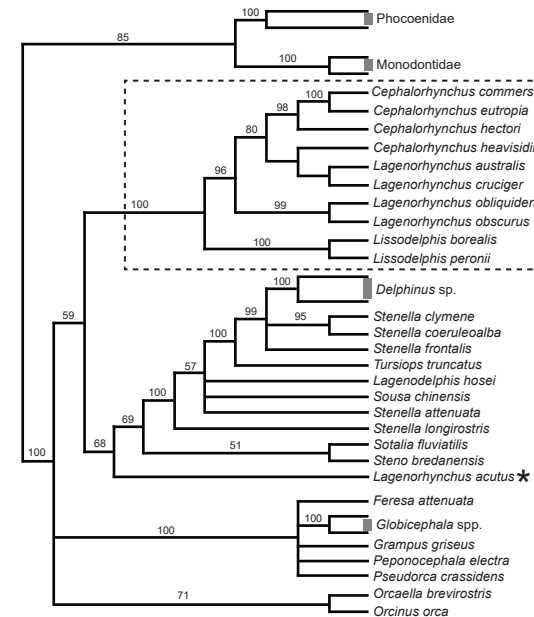


A) LeDuc et al. 1999, Figure 1 - *cyt b* (1,140 bp)



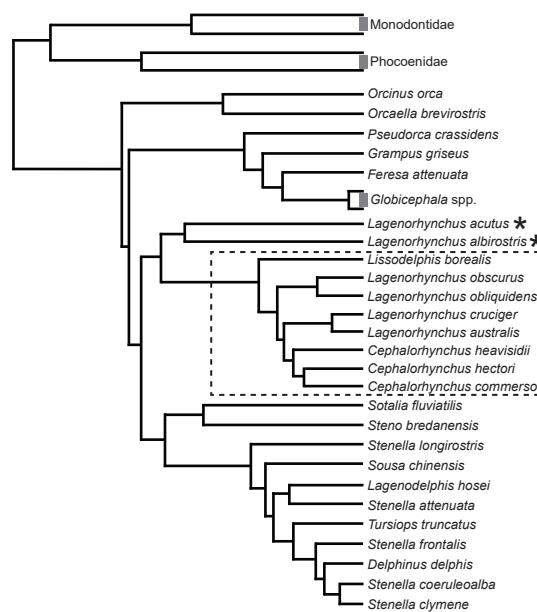
B) May-Collado & Agnarsson 2006, Figure 2 - *cyt b* (578 or 1,140 bp)



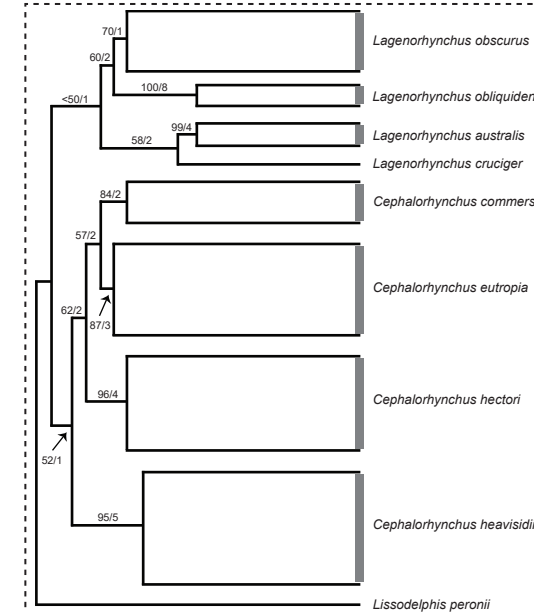
C) Agnarsson & May-Collado 2008, Figure 5 - *cyt b* (578 or 1,140 bp)



D) Slater et al. 2010, Figure 1 - *cyt b* (1,140 bp)



E) Pichler et al. 2001, Figure 1 - *mCR* (442 bp)



F) Harlin-Cognato & Honeycutt 2006, Figure 2 - *cyt b* + *mCR* + *Actin* + *RAG2* (3,083 bp)

