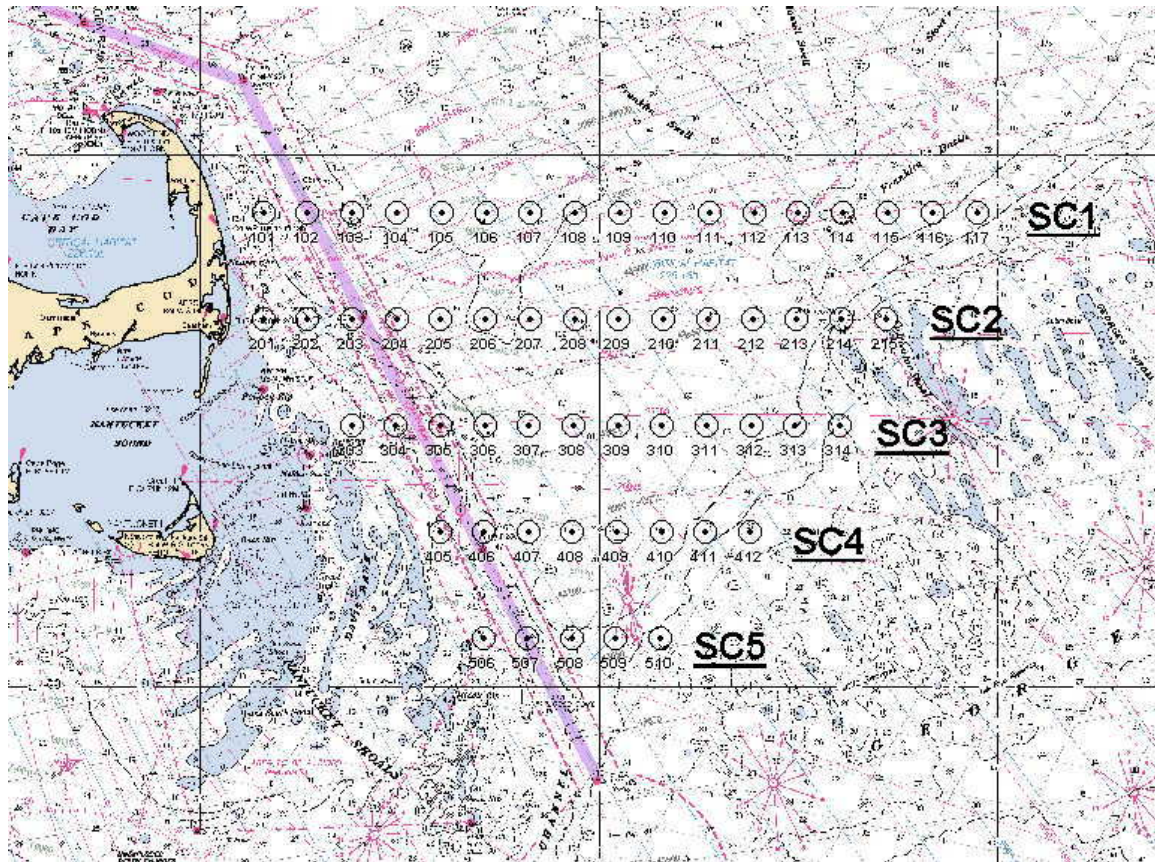


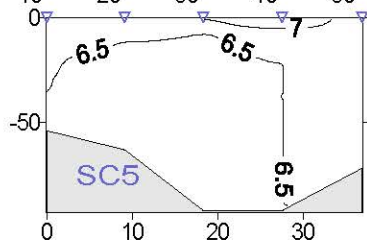
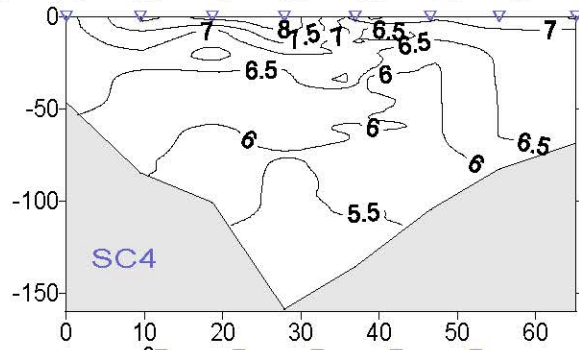
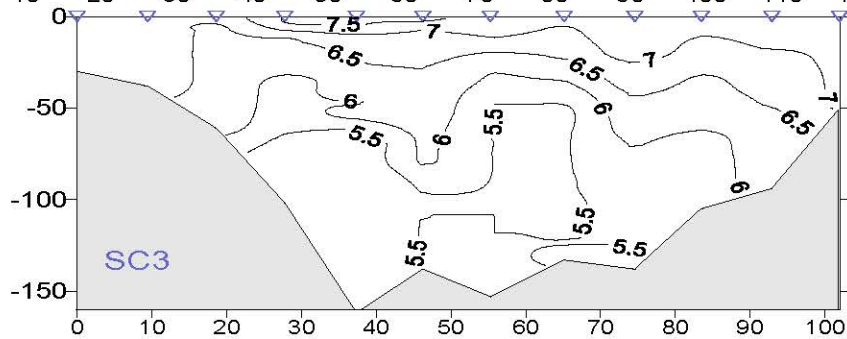
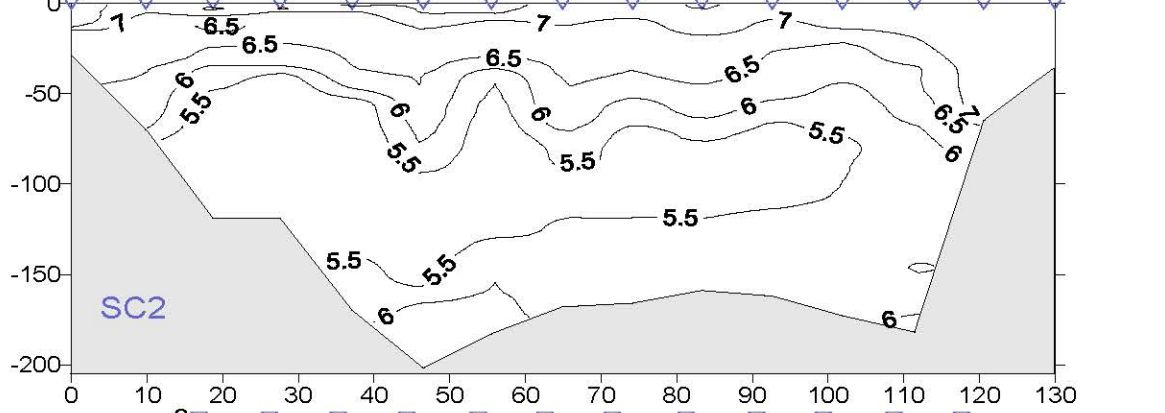
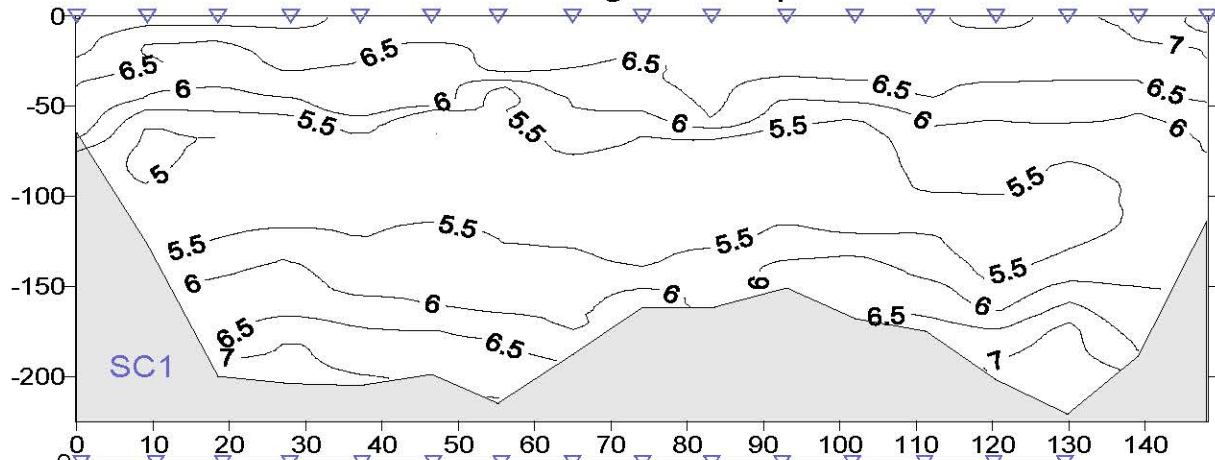
*Oceanography Branch CTD Data Report
2006 GSC Right Whale Survey - ALB0604*

**For further information, contact Cristina Bascuñán
National Marine Fisheries Service, Northeast Fisheries Science
Center, Woods Hole, Massachusetts 02543-1097.**

DATE: 4 - 26 May, 2006

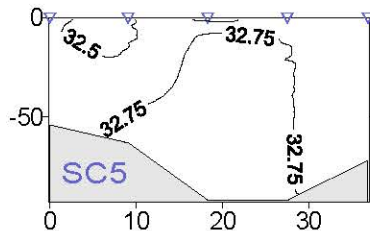
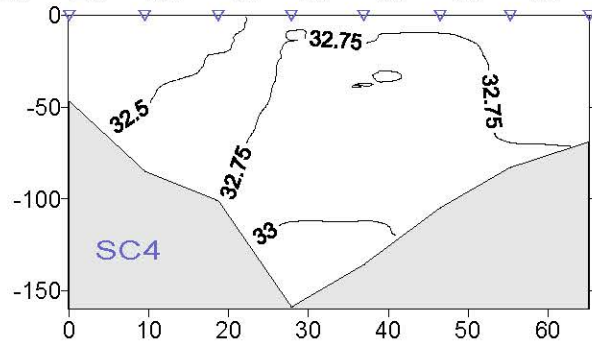
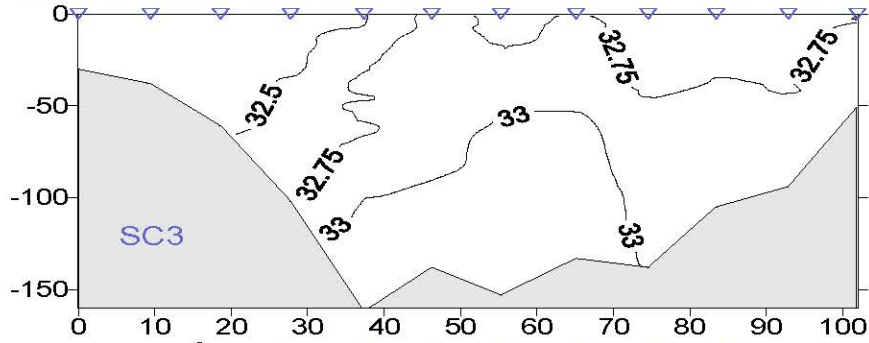
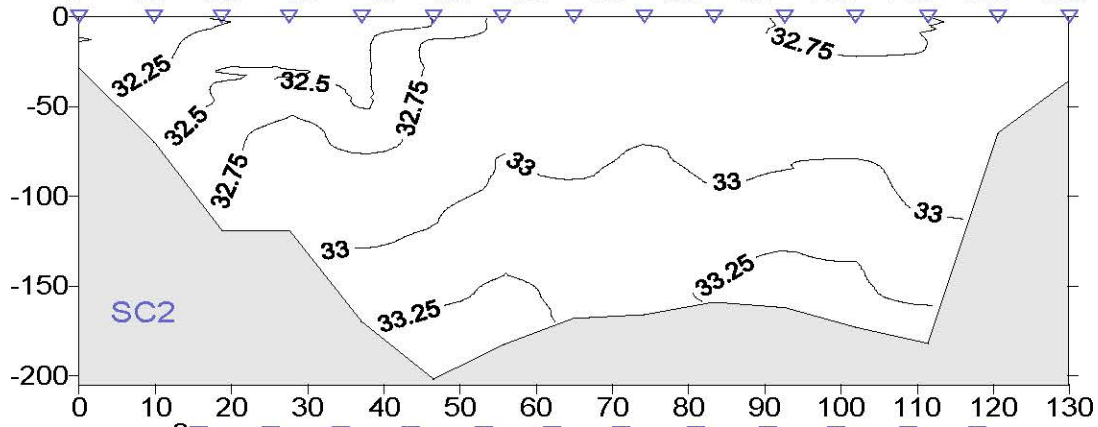
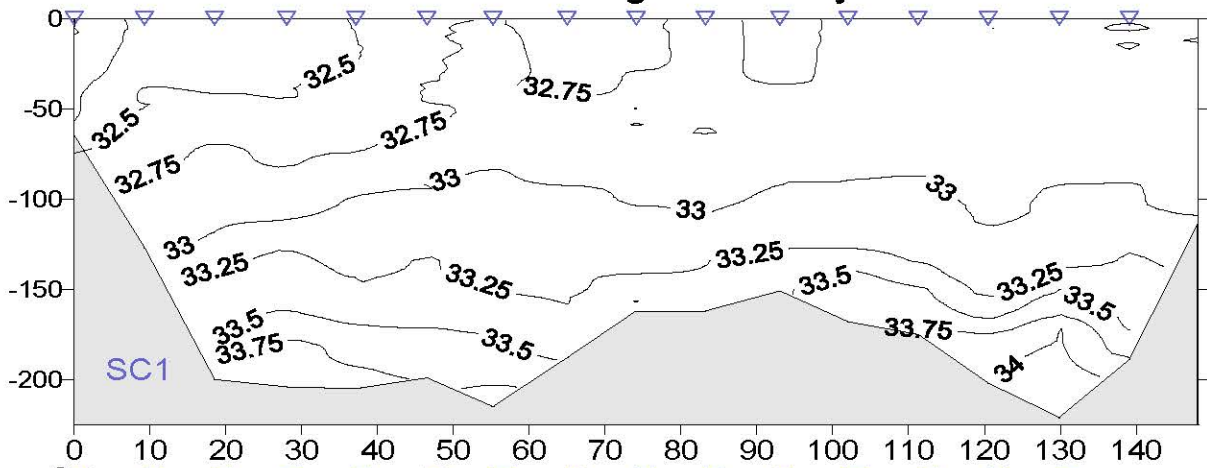


ALB0604 Leg 1 Temperature



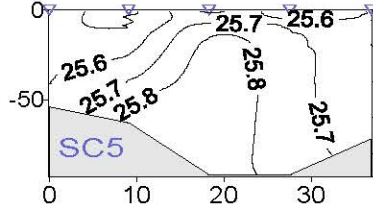
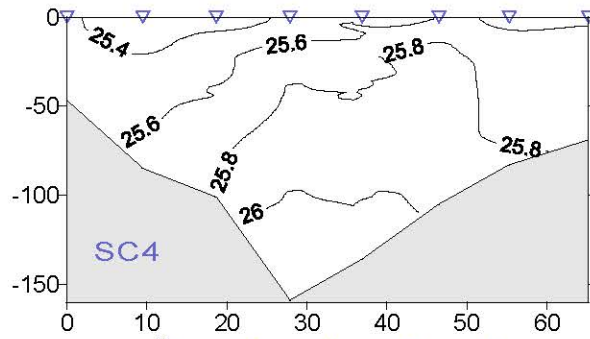
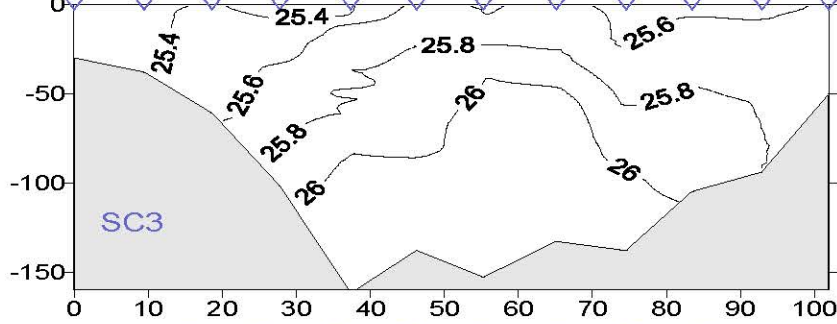
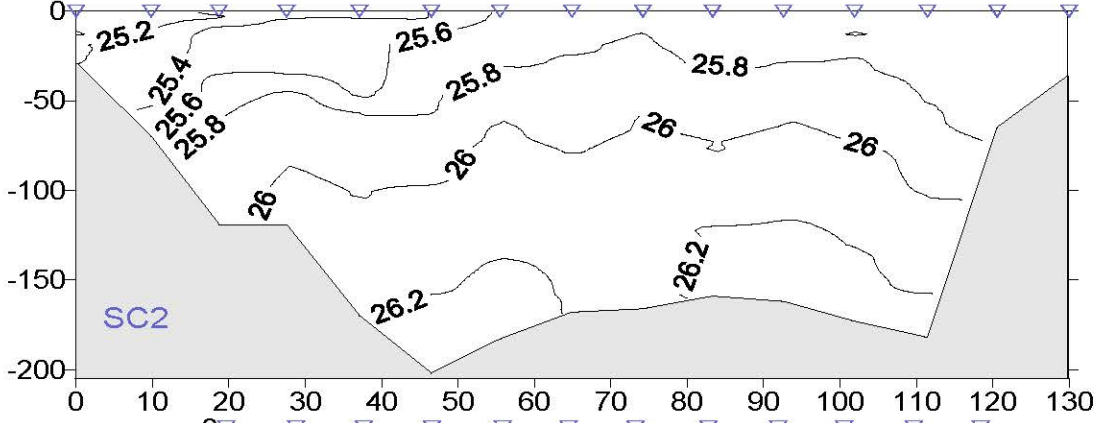
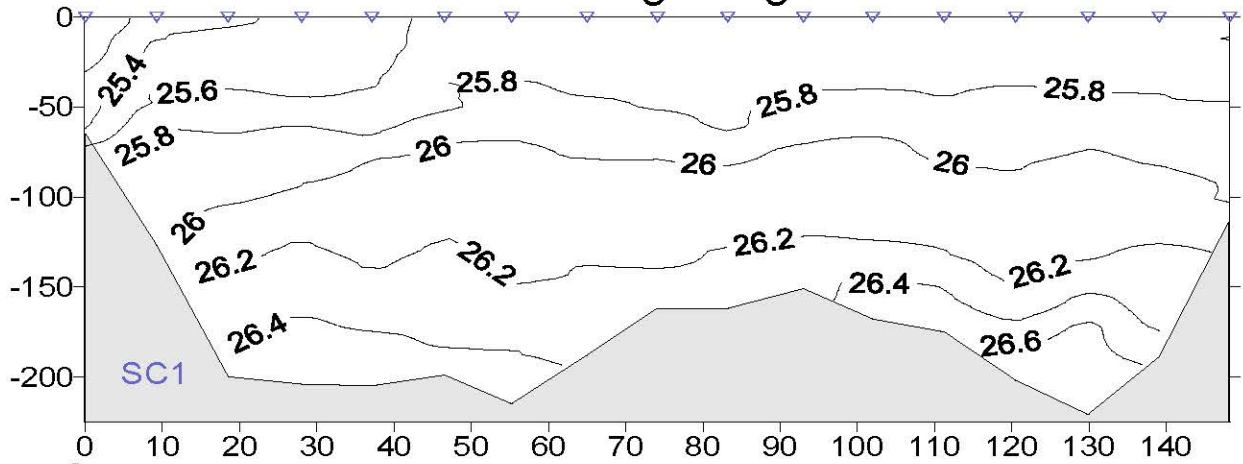
Distance (km from western-most station)

ALB0604 Leg 1 Salinity



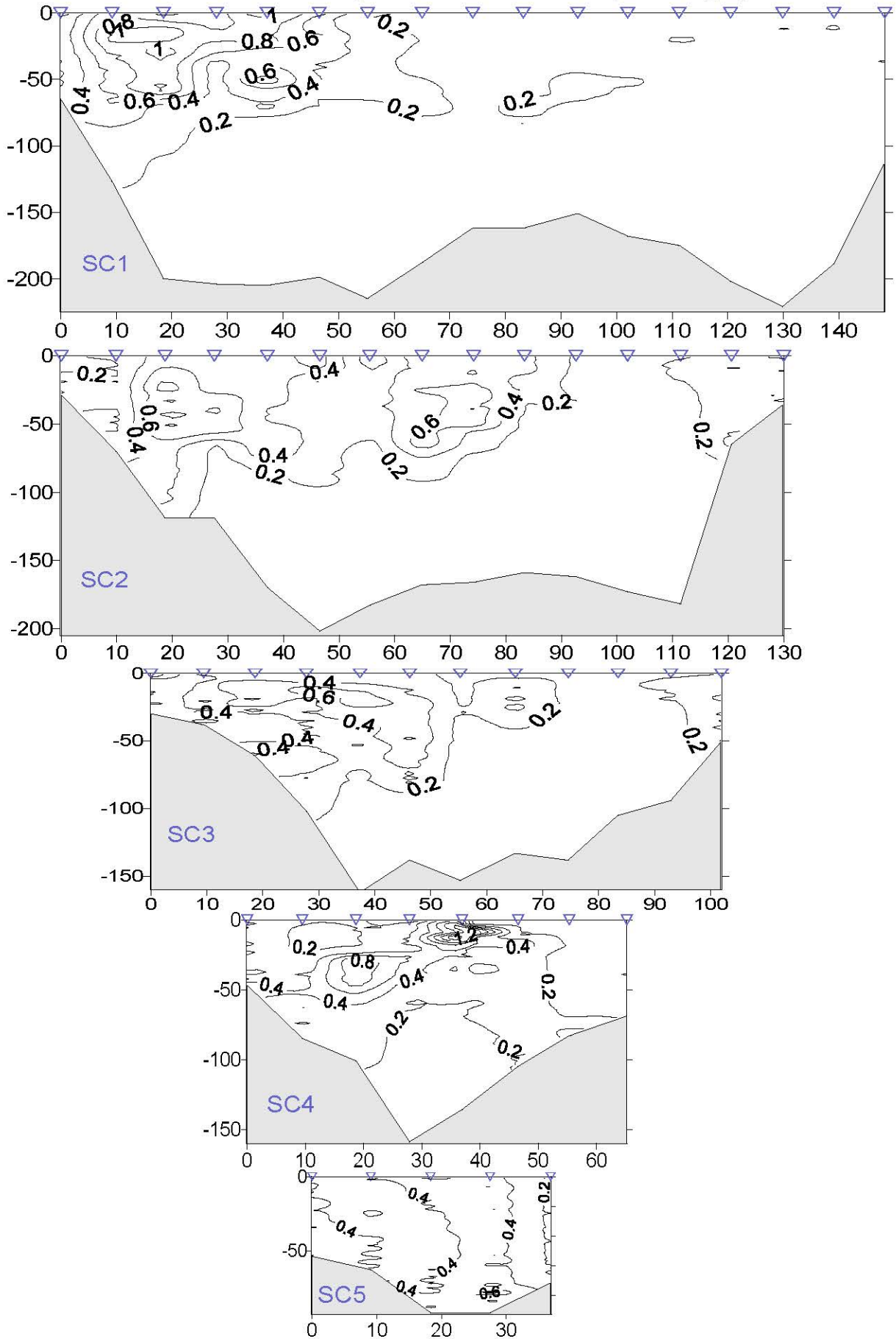
Distance (km from western-most station)

ALB0604 Leg 1 Sigma-t

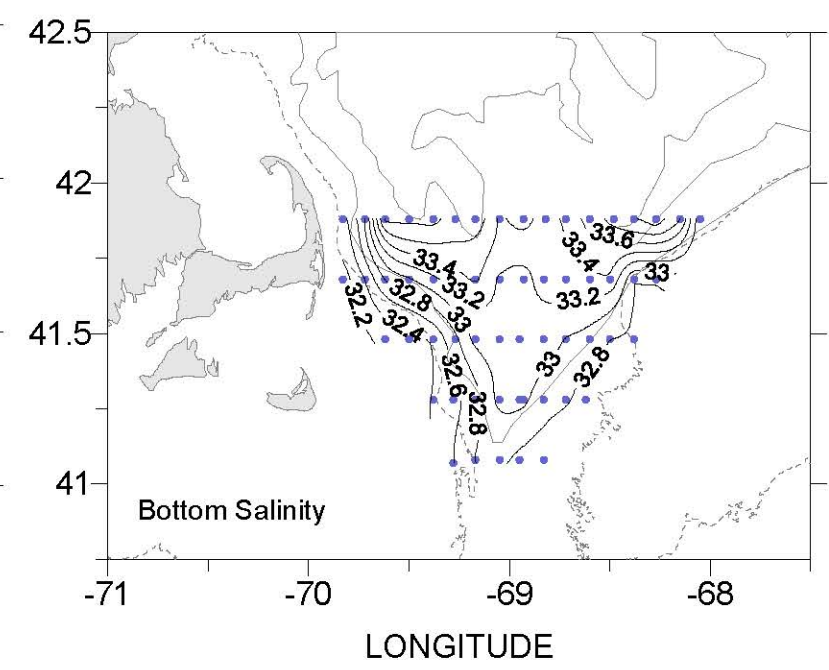
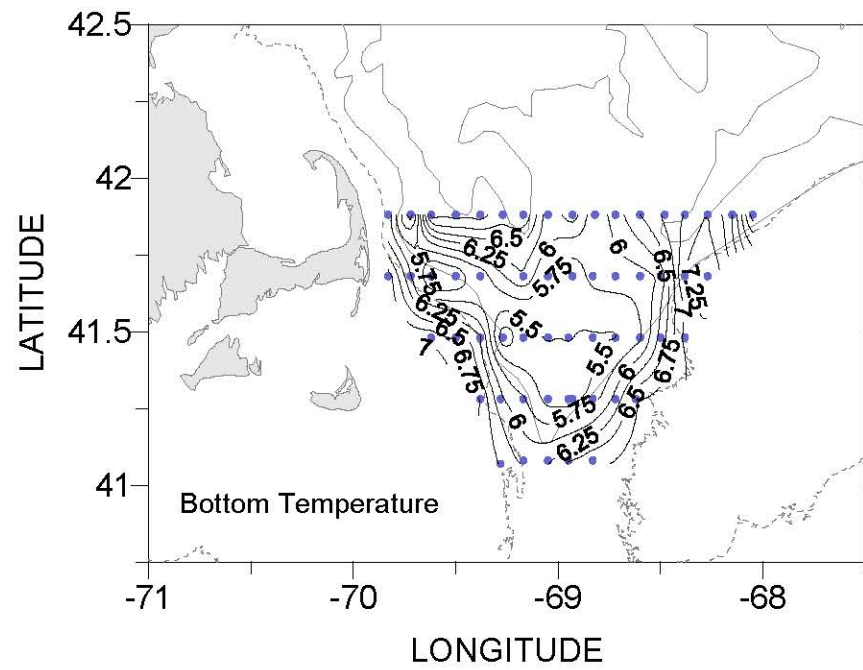
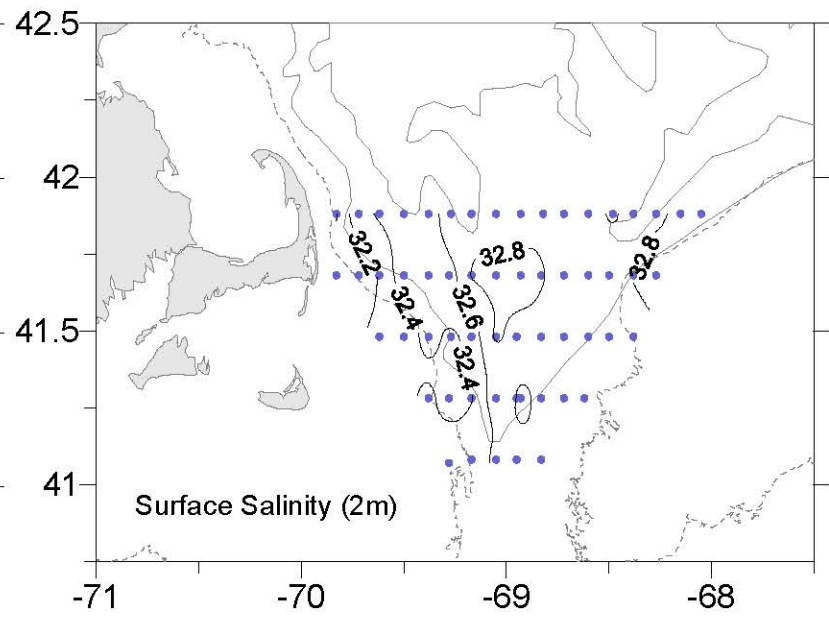
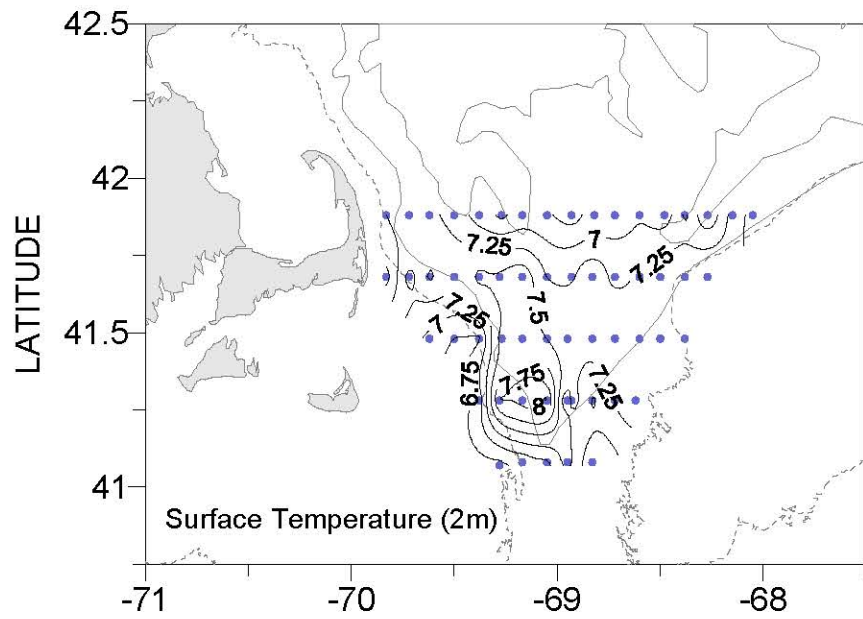


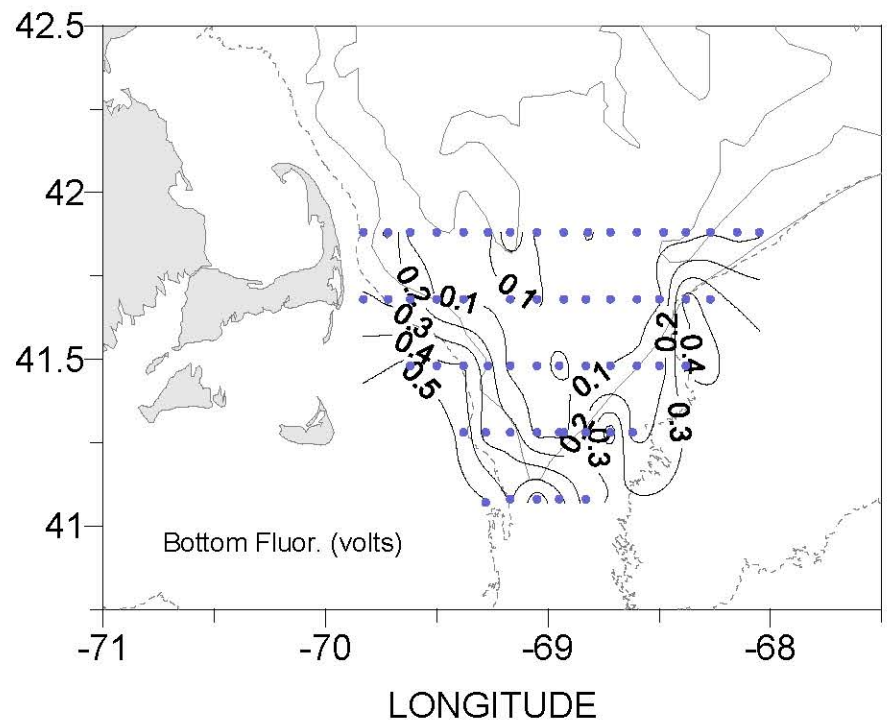
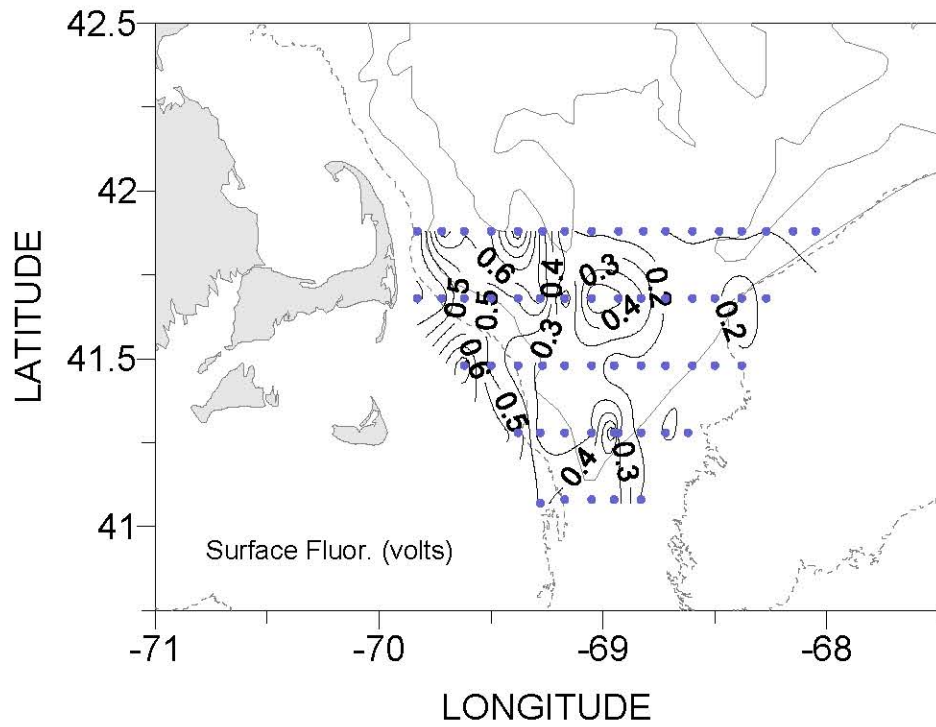
Distance (km from western-most station)

ALB0604 Leg 1 Fluorometer (Voltage)

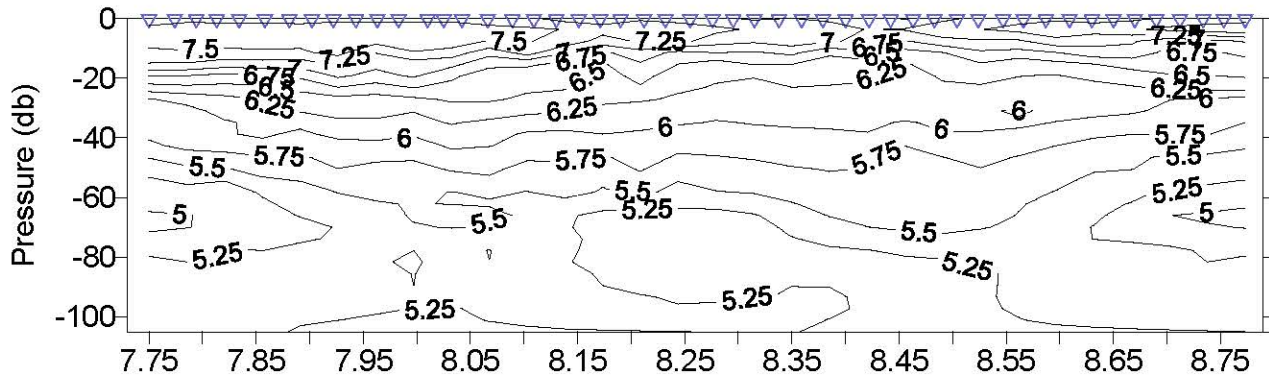


Distance (km from western-most station)

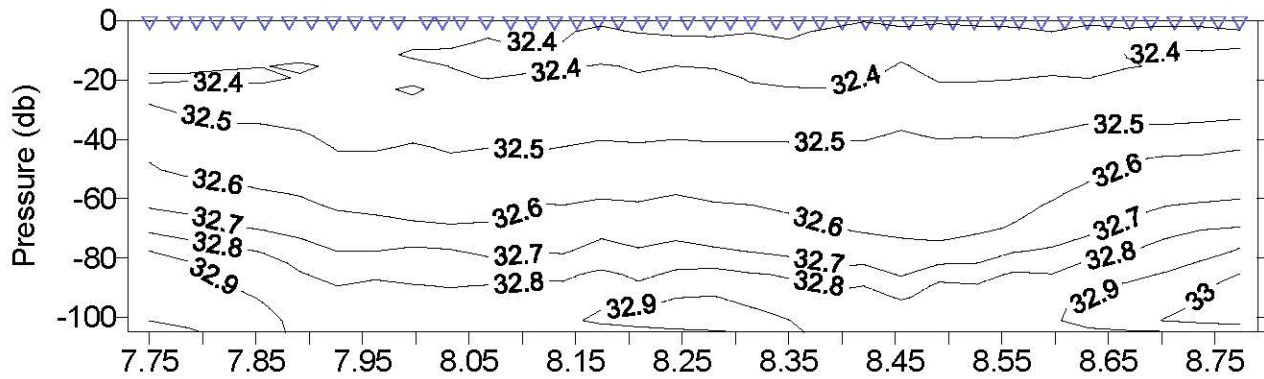




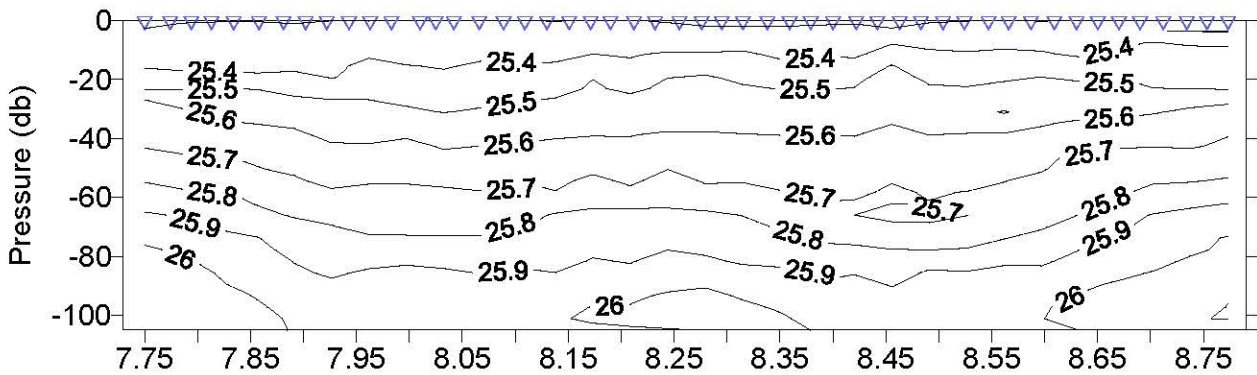
ALB0604 Leg 1 Diel Vertical Migration Study



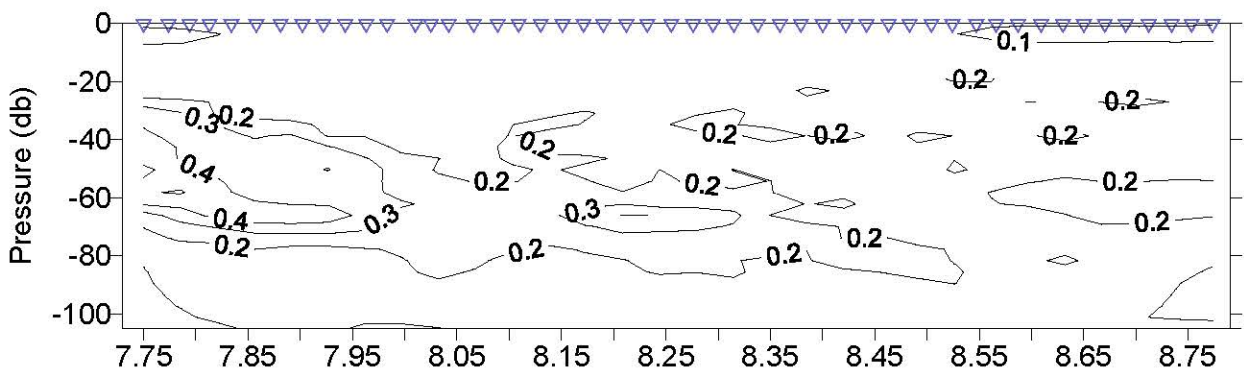
T



S



D



F

May 2006

**2006 GSC Right Whale Survey Leg1
4 - 10 May, 2006**

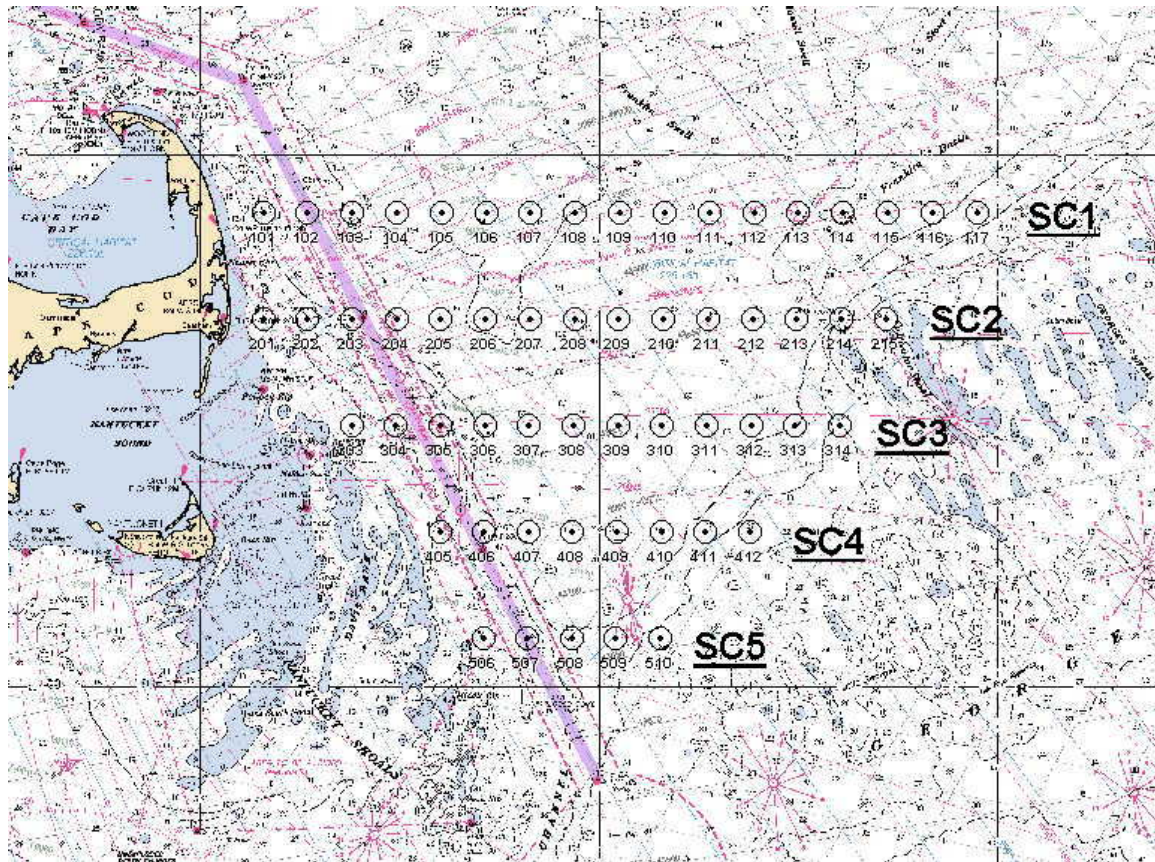
Cast #	Sta #	Lat	Long	Day	Mo	Year	Time (GMT)	Btm Depth (Meters)	Sfc Temp	Sfc Salt	Btm Temp	Btm Salt
4	101	4153.3	6950.5	5	5	2006	3:19	66	7.51	31.99	6.13	32.32
5	102	4153.2	6943.7	5	5	2006	4:11	124	7.31	32.35	5.06	32.79
6	103	4153.3	6937.0	5	5	2006	5:13	199	7.32	32.42	7.12	33.85
7	104	4153.5	6930.4	5	5	2006	6:10	202	7.13	32.47	7.10	33.84
8	105	4153.3	6923.7	5	5	2006	7:01	203	6.89	32.50	7.12	33.86
9	106	4153.3	6916.7	5	5	2006	7:55	197	6.67	32.70	6.83	33.69
10	107	4153.3	6910.3	5	5	2006	8:49	214	6.88	32.76	7.00	33.74
11	108	4153.4	6903.3	5	5	2006	9:46	185	6.78	32.65	6.09	33.37
12	109	4153.3	6856.8	5	5	2006	10:37	164	6.63	32.70	6.40	33.49
13	110	4153.3	6849.9	5	5	2006	11:28	163	6.86	32.80	5.80	33.28
14	111	4153.2	6843.4	5	5	2006	12:26	152	6.81	32.69	6.14	33.45
15	112	4153.3	6836.6	5	5	2006	13:26	169	6.99	32.78	6.50	33.68
16	113	4153.3	6829.9	5	5	2006	14:19	175	6.83	32.80	6.81	33.87
17	114	4153.3	6823.3	5	5	2006	15:11	200	7.30	32.78	7.01	33.99
18	115	4153.4	6816.4	5	5	2006	16:04	221	6.76	32.79	7.26	34.13
19	116	4153.4	6809.8	5	5	2006	16:55	189	7.31	32.80	6.76	33.82
20	117	4153.4	6803.2	5	5	2006	17:45	114	7.57	32.82	5.61	33.04
21	215	4141.5	6816.8	5	5	2006	20:07	38	7.49	32.84	7.47	32.84
22	214	4141.4	6823.4	5	5	2006	20:52	65	7.39	32.81	7.32	32.81
23	213	4141.4	6830.2	5	5	2006	21:37	176	7.44	32.74	6.04	33.38
24	212	4141.4	6836.9	5	5	2006	22:25	171	7.30	32.73	5.92	33.33
25	211	4141.4	6843.4	5	5	2006	23:13	161	7.21	32.73	5.89	33.30
26	210	4141.3	6850.4	6	5	2006	0:01	156	7.62	32.82	5.87	33.29
27	209	4141.4	6856.9	6	5	2006	0:43	164	7.21	32.86	5.53	33.13
28	208	4141.2	6903.7	6	5	2006	1:30	170	7.24	32.85	5.63	33.17
29	207	4141.3	6910.4	6	5	2006	2:16	181	7.74	32.83	6.24	33.43
30	206	4141.2	6917.1	6	5	2006	3:02	198	7.54	32.50	6.32	33.46
31	205	4141.4	6923.7	6	5	2006	3:49	169	7.55	32.43	5.58	33.15
32	204	4141.4	6930.4	6	5	2006	4:37	118	7.35	32.36	5.31	32.97
33	203	4141.4	6937.2	6	5	2006	5:25	122	7.36	32.31	5.14	32.81
34	202	4141.3	6943.7	6	5	2006	6:11	69	7.14	32.04	6.03	32.40
35	201	4141.5	6950.7	6	5	2006	7:00	28	7.86	32.06	6.90	32.11
36	303	4129.4	6937.2	6	5	2006	8:46	29	6.94	32.27	6.94	32.27
37	304	4129.3	6930.3	6	5	2006	9:28	38	6.74	32.29	6.73	32.29
38	305	4129.2	6923.8	6	5	2006	10:10	61	6.58	32.35	6.28	32.43
39	306	4129.2	6916.7	6	5	2006	10:53	106	7.61	32.36	5.06	32.75
40	307	4129.2	6910.5	6	5	2006	11:34	162	7.56	32.47	5.41	33.06
41	308	4129.4	6903.7	6	5	2006	12:25	140	7.62	32.81	5.52	33.11

**2006 GSC Right Whale Survey Leg1
4 - 10 May, 2006**

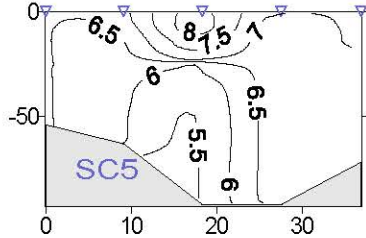
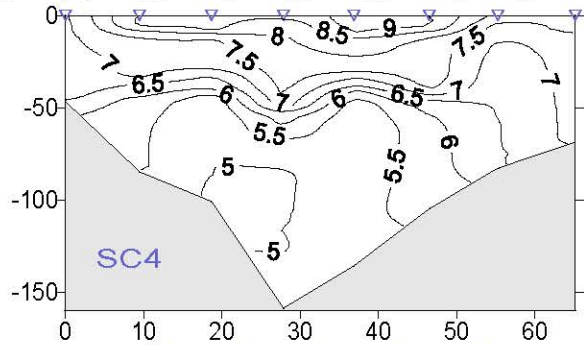
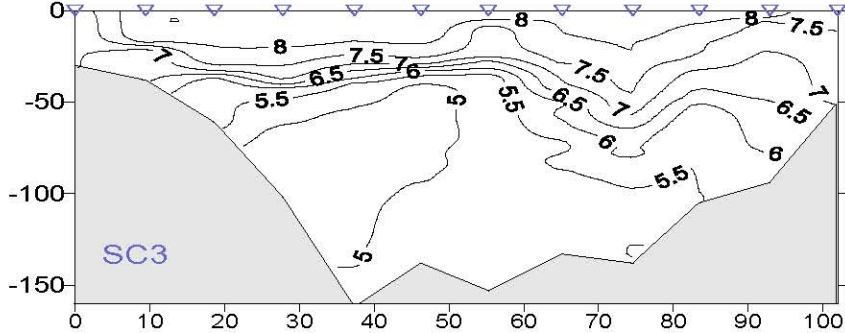
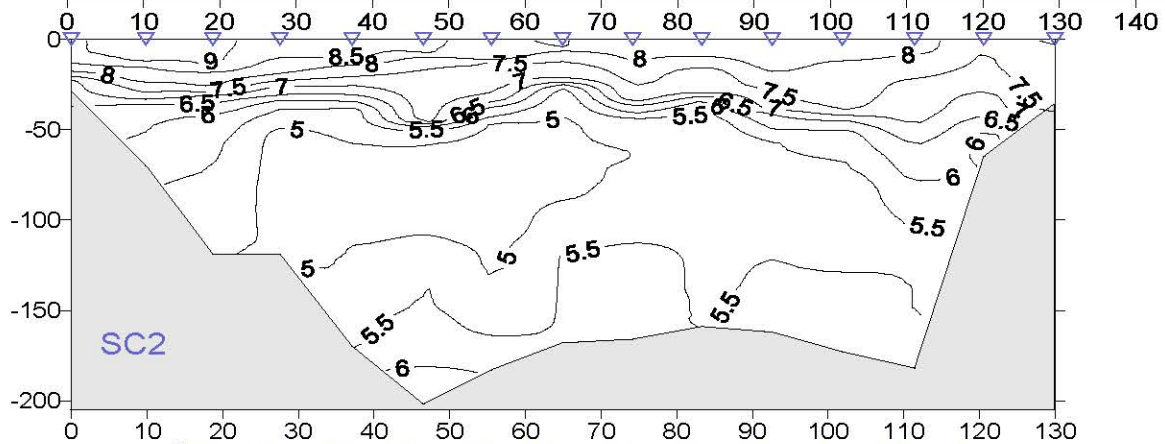
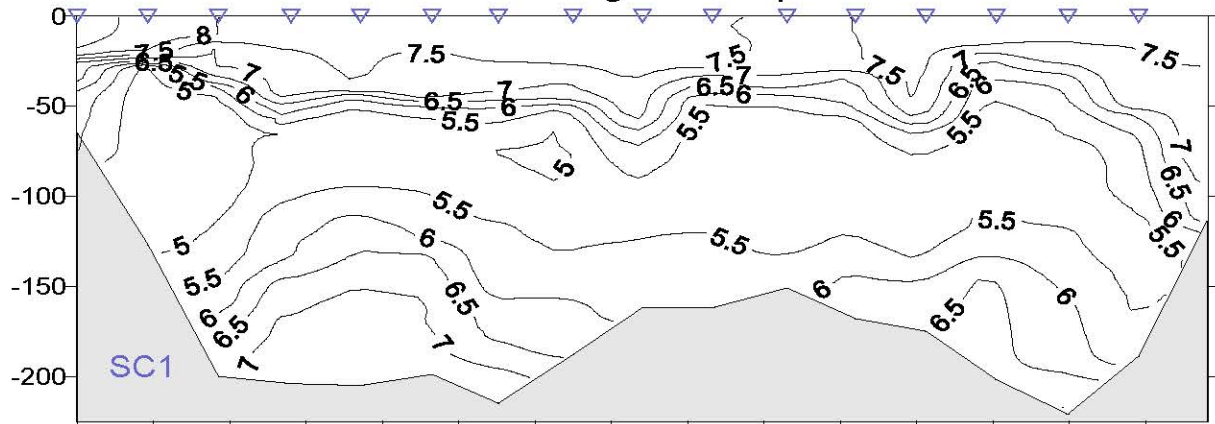
Cast #	Sta #	Lat	Long	Day	Mo	Year	Time (GMT)	Btm Depth (Meters)	Sfc Temp	Sfc Salt	Btm Temp	Btm Salt
42	309	4129.4	6857.0	6	5	2006	13:11	153	7.34	32.69	5.52	33.13
43	310	4129.4	6850.3	6	5	2006	13:58	131	7.30	32.76	5.49	33.11
44	311	4129.3	6843.7	6	5	2006	14:45	136	7.45	32.68	5.49	32.99
45	312	4129.4	6836.8	6	5	2006	15:36	104	7.39	32.68	5.70	32.92
46	313	4129.4	6830.5	6	5	2006	16:19	94	7.42	32.66	6.34	32.80
47	314	4129.5	6823.9	6	5	2006	17:17	50	7.37	32.74	7.07	32.78
48	412	4117.4	6837.2	6	5	2006	19:37	68	7.54	32.61	6.73	32.71
49	411	4117.6	6843.9	6	5	2006	20:17	82	7.23	32.65	6.09	32.83
50	410	4117.5	6850.4	6	5	2006	21:00	107	6.96	32.72	5.62	32.88
51	409	4117.6	6857.1	6	5	2006	21:46	134	6.95	32.61	5.40	33.04
52	409	4117.7	6856.9	6	5	2006	22:01	135	7.60	32.53	5.40	33.04
53	408	4117.4	6903.6	6	5	2006	22:47	158	8.29	32.71	5.41	33.06
54	407	4117.5	6910.5	6	5	2006	23:38	101	8.05	32.37	5.79	32.71
55	406	4117.3	6917.1	7	5	2006	0:25	84	8.02	32.34	6.05	32.53
56	405	4117.3	6923.9	7	5	2006	1:17	45	6.84	32.43	6.75	32.42
57	506	4104.9	6917.1	7	5	2006	3:09	56	6.66	32.51	6.47	32.59
58	507	4105.4	6910.7	7	5	2006	3:49	61	6.88	32.47	6.19	32.81
59	508	4105.5	6903.9	7	5	2006	4:40	95	7.00	32.87	6.20	32.84
60	509	4105.6	6857.3	7	5	2006	5:30	89	7.33	32.61	6.50	32.75
61	510	4105.5	6850.7	7	5	2006	6:19	71	6.79	32.62	6.67	32.65
62	DVM1	4117.2	6908.9	7	5	2006	18:00	102	7.59	32.48	5.40	33.02
63	2	4117.1	6908.9	7	5	2006	18:34	103	7.72	32.52	5.39	33.01
64	3	4117.4	6908.9	7	5	2006	19:02	105	7.69	32.53	5.39	33.01
65	4	4117.3	6908.9	7	5	2006	19:31	104	7.68	32.52	5.37	32.98
66	5	4117.3	6908.8	7	5	2006	20:01	105	7.68	32.53	5.34	32.95
67	6	4117.4	6908.9	7	5	2006	20:36	105	7.74	32.46	5.30	32.93
68	7	4117.4	6908.8	7	5	2006	21:08	107	7.77	32.45	5.25	32.90
69	8	4117.3	6908.9	7	5	2006	21:38	105	7.91	32.44	5.20	32.85
70	9	4117.4	6908.8	7	5	2006	22:07	107	7.86	32.43	5.20	32.84
71	10	4117.2	6908.7	7	5	2006	22:37	105	7.84	32.42	5.21	32.81
72	11	4117.3	6908.6	7	5	2006	23:06	107	7.79	32.42	5.22	32.80
73	12	4117.2	6908.9	7	5	2006	23:34	103	7.58	32.40	5.22	32.78
74	13	4117.2	6908.8	8	5	2006	0:13	103	7.58	32.40	5.23	32.77
75	14	4117.1	6908.7	8	5	2006	0:36	103	7.53	32.40	5.24	32.76
76	15	4117.2	6908.9	8	5	2006	1:01	102	7.73	32.39	5.22	32.77
77	16	4117.2	6908.6	8	5	2006	1:34	104	7.77	32.38	5.24	32.80
78	17	4117.1	6908.8	8	5	2006	2:07	103	7.81	32.40	5.23	32.80
79	18	4117.1	6908.8	8	5	2006	2:37	102	7.71	32.41	5.26	32.83

**2006 GSC Right Whale Survey Leg1
4 - 10 May, 2006**

Cast #	Sta #	Lat	Long	Day	Mo	Year	Time (GMT)	Btm Depth (Meters)	Sfc Temp	Sfc Salt	Btm Temp	Btm Salt
80	19	4117.2	6908.8	8	5	2006	3:07	103	7.68	32.42	5.26	32.87
81	20	4117.2	6908.7	8	5	2006	3:37	104	7.54	32.44	5.30	32.92
82	21	4117.3	6908.9	8	5	2006	4:05	104	7.57	32.45	5.31	32.94
83	22	4117.2	6908.8	8	5	2006	4:34	103	7.39	32.41	5.34	32.96
84	23	4117.2	6908.8	8	5	2006	5:04	102	7.42	32.43	5.35	32.97
85	24	4117.2	6908.9	8	5	2006	5:34	102	7.39	32.45	5.36	32.98
86	25	4117.3	6909.0	8	5	2006	6:07	103	7.29	32.41	5.36	32.98
87	26	4117.3	6908.9	8	5	2006	6:37	102	7.24	32.40	5.35	32.98
88	27	4117.3	6908.9	8	5	2006	7:04	104	7.04	32.38	5.34	32.97
89	28	4117.3	6908.8	8	5	2006	7:33	103	7.20	32.40	5.32	32.95
90	29	4117.2	6908.9	8	5	2006	8:07	103	7.17	32.40	5.28	32.93
91	30	4117.4	6909.0	8	5	2006	8:37	105	7.22	32.41	5.26	32.91
92	31	4117.1	6909.0	8	5	2006	9:06	101	7.05	32.39	5.20	32.86
93	32	4117.3	6908.7	8	5	2006	9:36	106	7.13	32.41	5.19	32.85
94	33	4117.2	6909.0	8	5	2006	10:07	102	7.05	32.39	5.17	32.81
95	34	4117.2	6908.9	8	5	2006	10:36	103	7.07	32.39	5.17	32.80
96	35	4117.2	6909.0	8	5	2006	11:07	102	7.19	32.38	5.21	32.78
97	36	4117.2	6908.9	8	5	2006	11:36	102	7.20	32.39	5.22	32.76
98	37	4117.2	6908.9	8	5	2006	12:06	103	7.13	32.37	5.24	32.76
99	38	4117.2	6908.8	8	5	2006	12:34	104	7.21	32.35	5.21	32.78
100	39	4117.2	6908.8	8	5	2006	13:07	104	7.18	32.36	5.18	32.80
101	40	4117.2	6908.8	8	5	2006	13:34	103	6.68	32.38	5.20	32.79
102	41	4117.1	6908.8	8	5	2006	14:04	103	7.44	32.33	5.22	32.88
103	42	4117.0	6908.9	8	5	2006	14:37	102	7.35	32.36	5.22	32.87
104	43	4117.1	6908.9	8	5	2006	15:07	103	7.54	32.30	5.28	32.93
105	44	4117.0	6908.8	8	5	2006	15:36	103	7.66	32.38	5.31	32.96
106	45	4117.3	6908.8	8	5	2006	16:04	104	7.85	32.39	5.40	33.03
107	46	4117.1	6908.7	8	5	2006	16:34	104	7.78	32.40	5.40	33.04
108	47	4117.3	6908.9	8	5	2006	17:06	103	7.80	32.46	5.41	33.04
109	48	4117.3	6908.7	8	5	2006	17:37	104	7.75	32.45	5.41	33.05
110	49	4117.3	6909.1	8	5	2006	18:04	104	7.72	32.44	5.40	33.04
111	50	4117.5	6908.9	8	5	2006	18:32	104	7.75	32.45	5.41	33.05

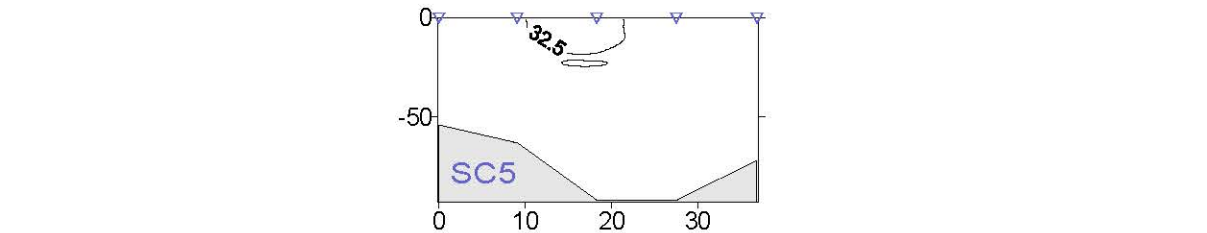
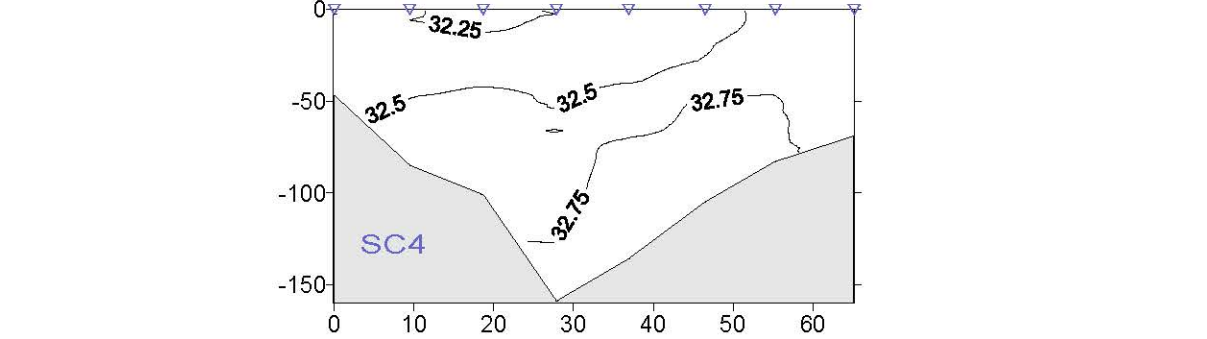
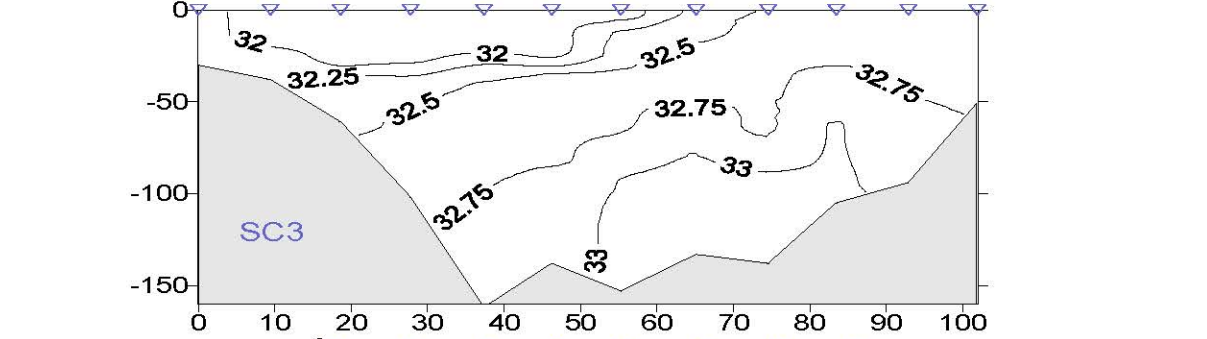
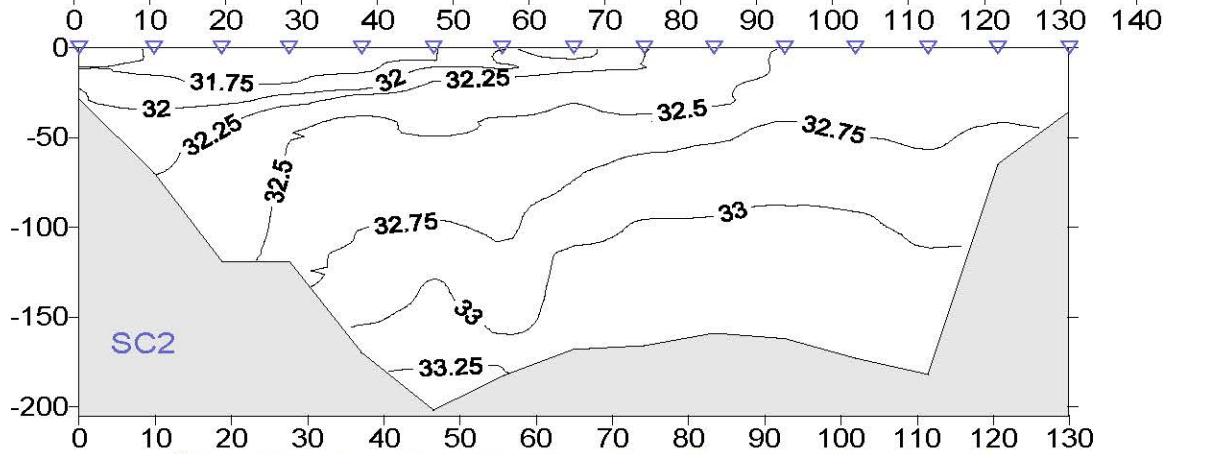
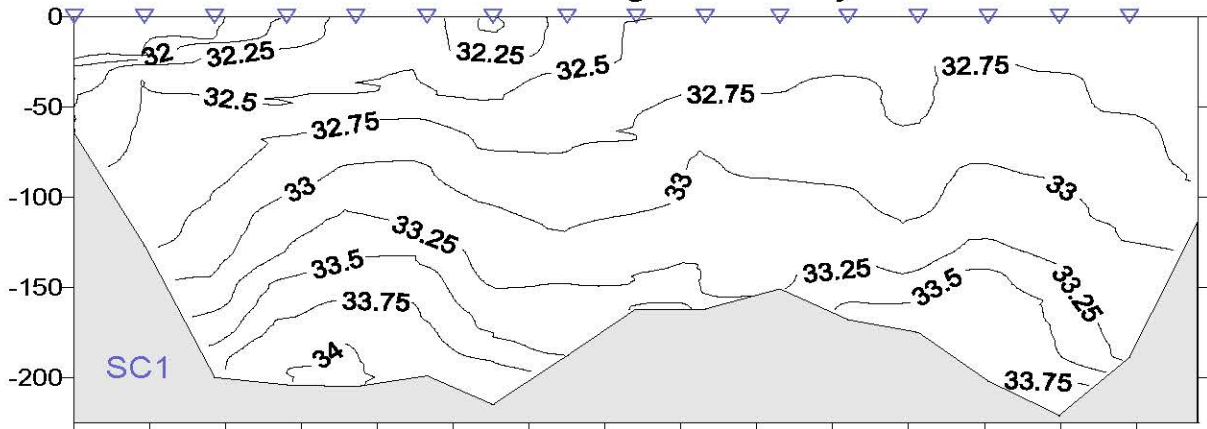


ALB0604 Leg 2 Temperature



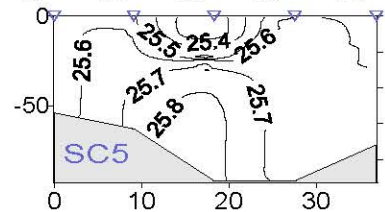
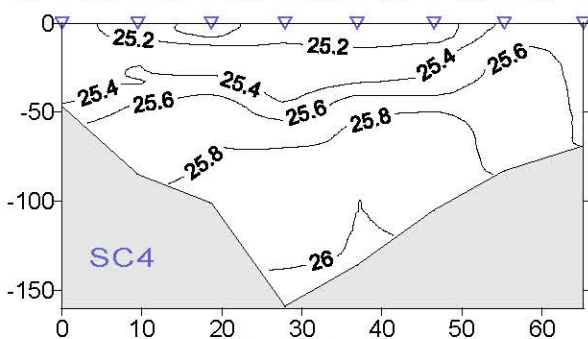
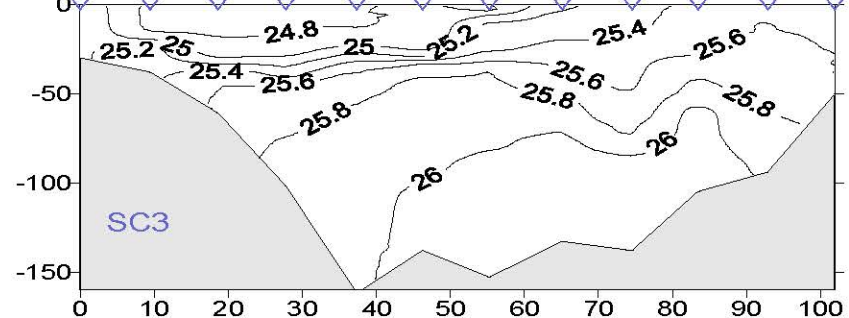
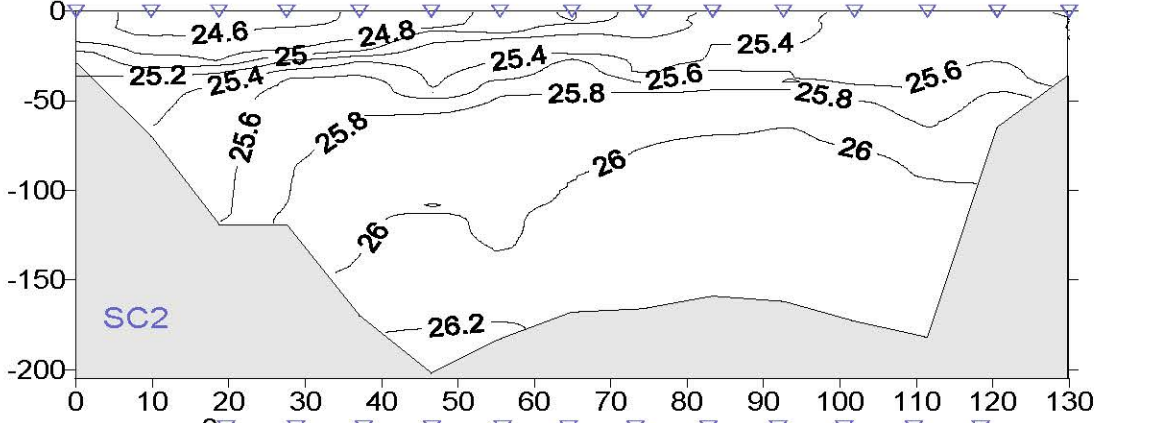
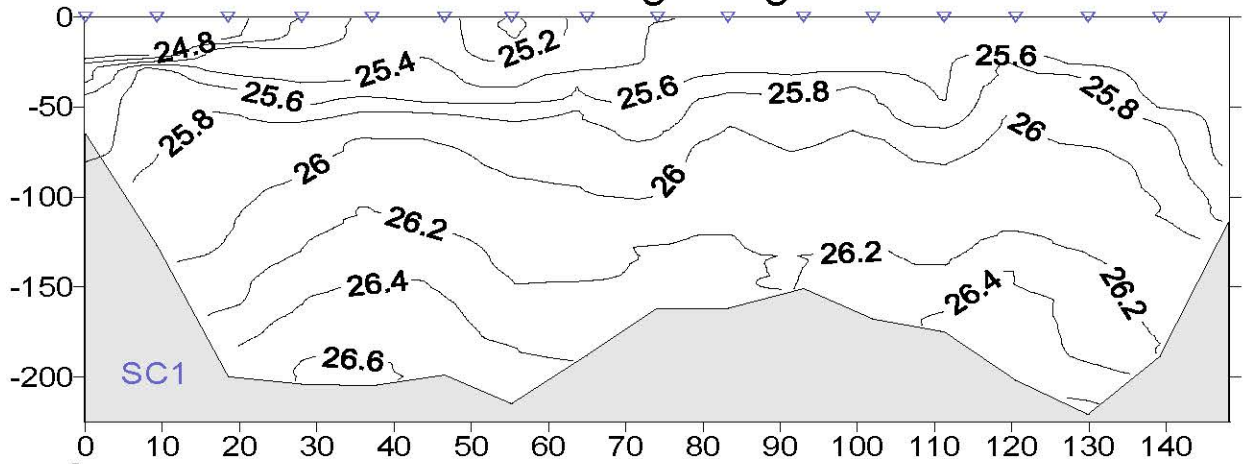
Distance (km from western-most station)

ALB0604 Leg 2 Salinity



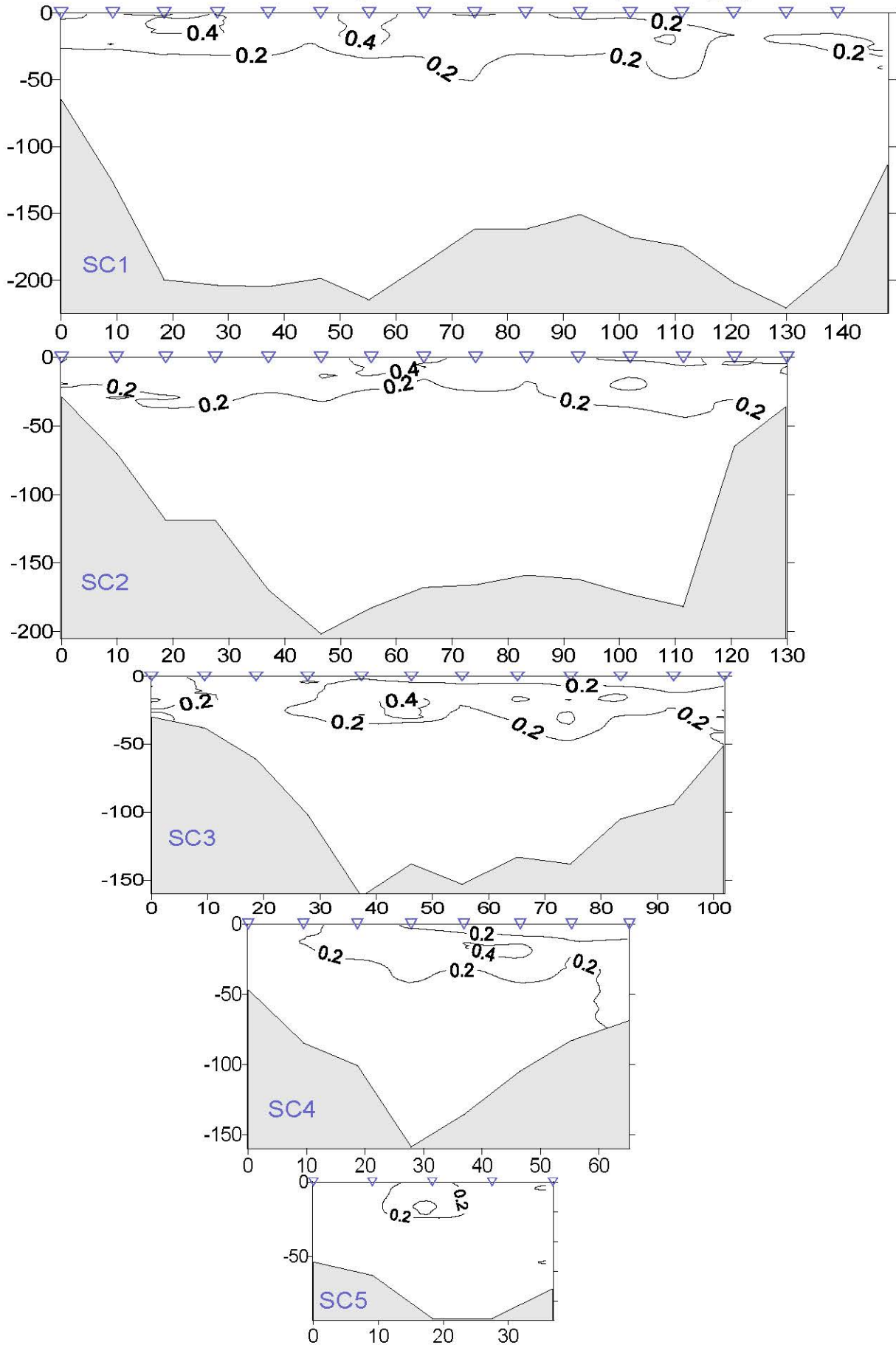
Distance (km from western-most station)

ALB0604 Leg 2 Sigma-t

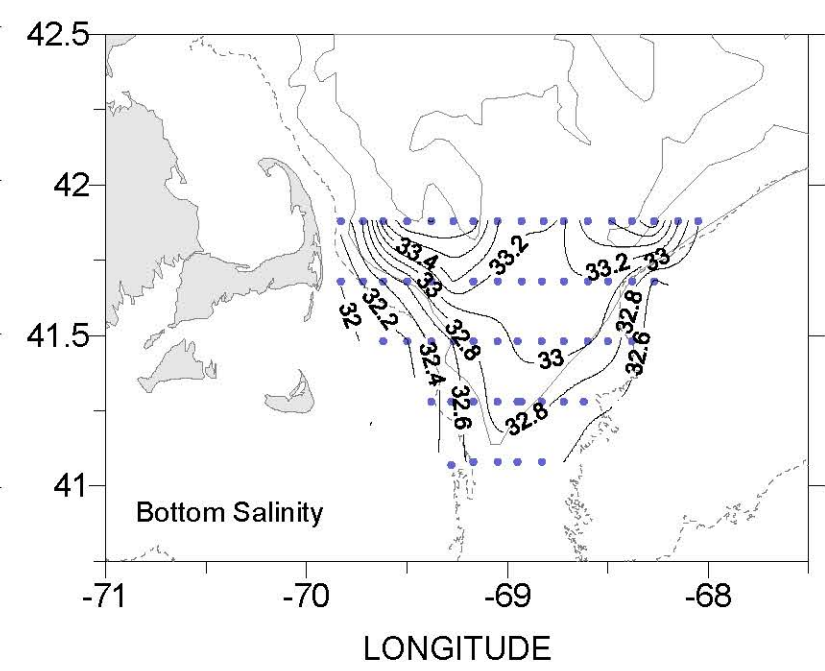
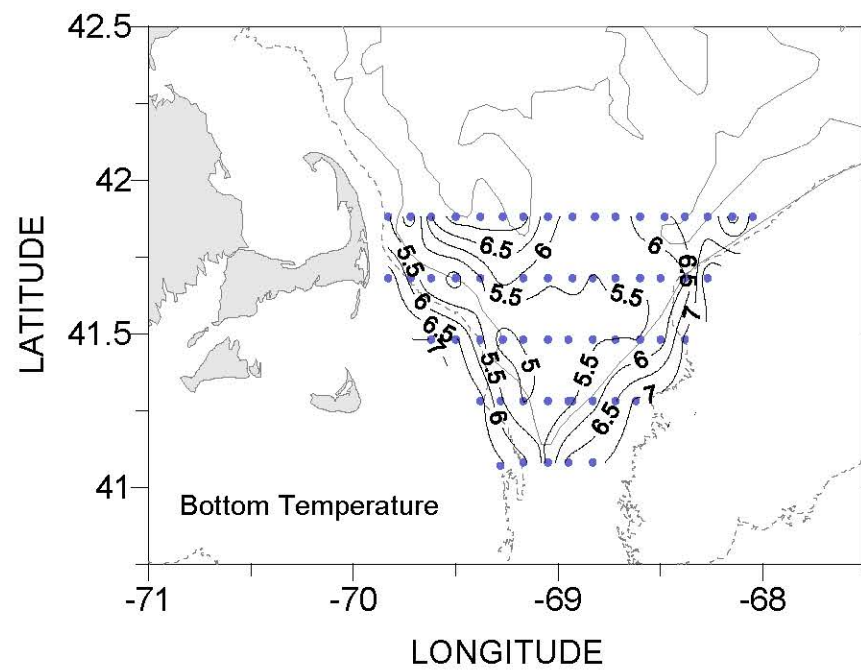
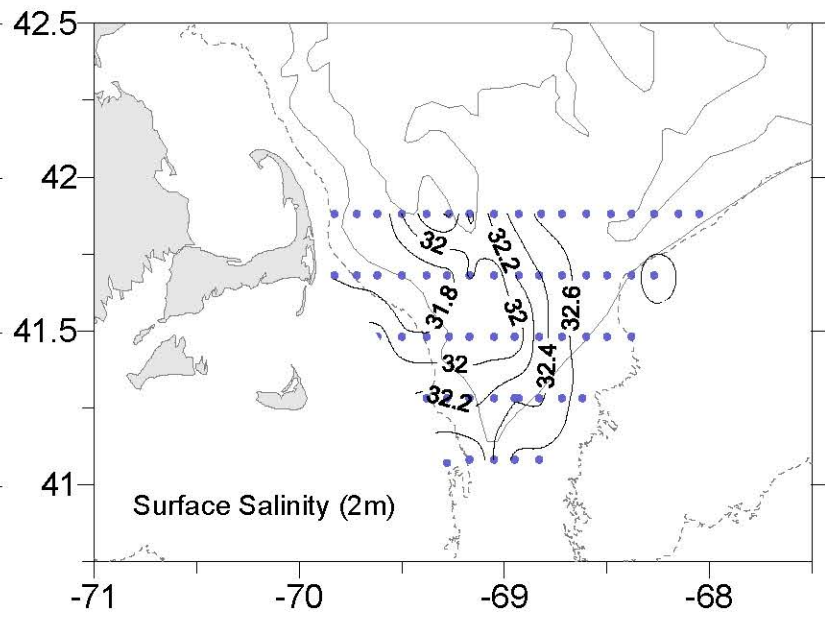
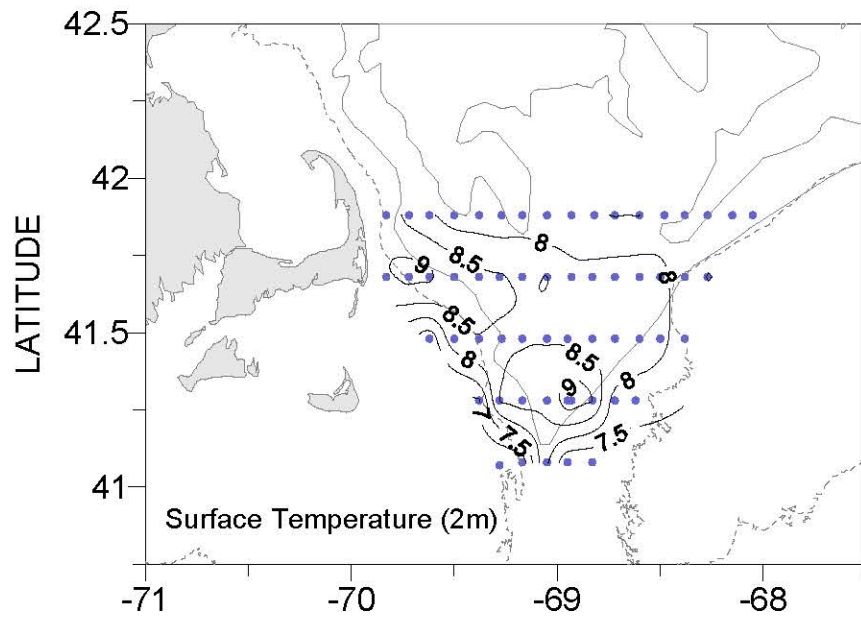


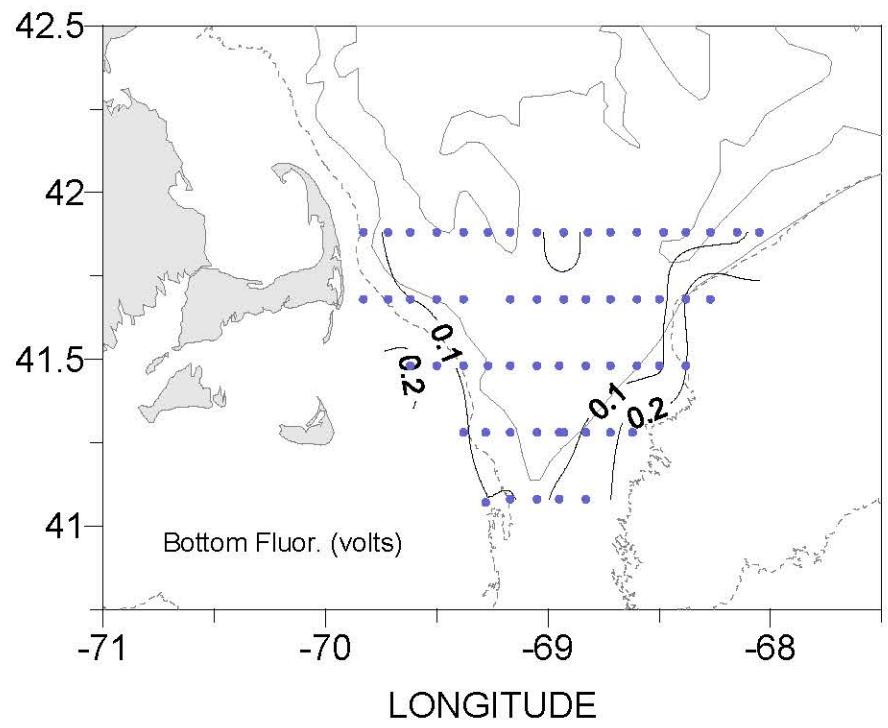
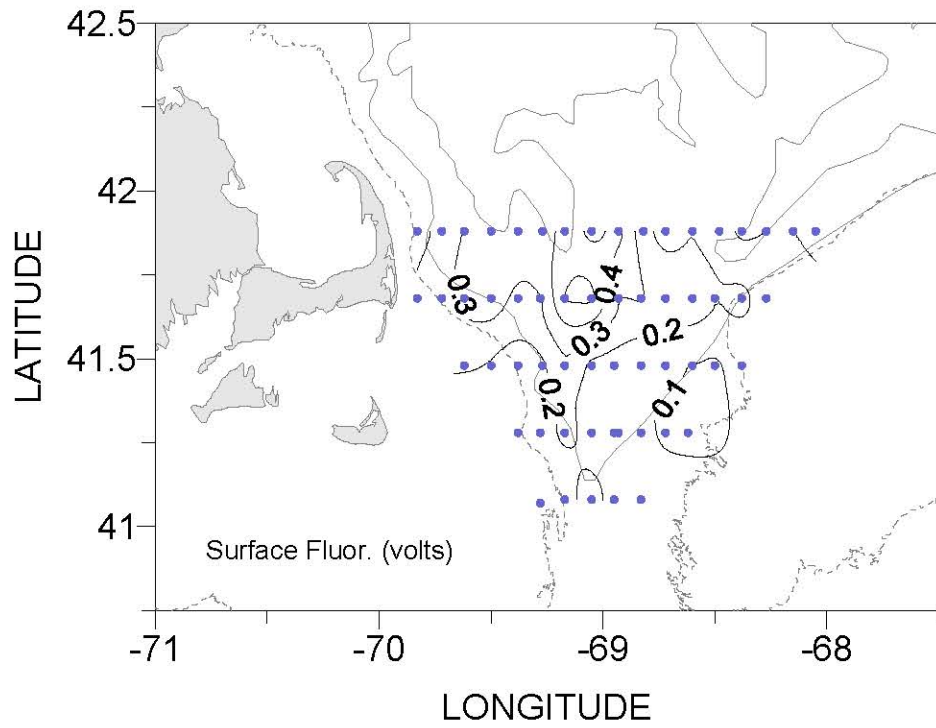
Distance (km from western-most station)

ALB0604 Leg 2 Fluorometer (Voltage)



Distance (km from western-most station)





2006 GSC Right Whale Survey Leg2
16 - 26 May, 2006

Cast #	Sta #	Lat	Long	Day	Mo	Year	Time (GMT)	Btm Depth (Meters)	Sfc Temp	Sfc Salt	Btm Temp	Btm Salt
112	101	4153.4	6949.7	16	5	2006	22:13	75	8.81	31.72	5.51	32.27
113	102	4153.4	6943.4	16	5	2006	22:55	122	8.32	31.72	4.69	32.62
114	103	4153.3	6936.8	16	5	2006	23:43	200	8.03	31.68	6.76	33.68
115	104	4153.4	6930.4	17	5	2006	0:30	199	7.70	31.97	7.28	33.98
116	105	4153.5	6923.4	17	5	2006	1:22	203	7.76	32.35	7.33	34.01
117	106	4153.4	6916.9	17	5	2006	2:13	197	7.64	32.44	7.21	33.92
118	107	4153.3	6910.2	17	5	2006	3:02	214	7.79	31.95	7.20	33.90
119	108	4153.4	6903.6	17	5	2006	3:54	184	7.53	32.29	6.23	33.41
120	109	4153.4	6856.9	17	5	2006	4:52	165	7.61	32.38	5.79	33.23
121	110	4153.5	6850.3	17	5	2006	6:01	163	7.52	32.63	5.78	33.24
122	111	4153.4	6843.4	17	5	2006	11:07	151	7.48	32.67	5.57	33.18
123	112	4153.3	6836.5	17	5	2006	11:58	169	7.48	32.65	6.28	33.51
126	113	4153.5	6830.0	17	5	2006	13:52	175	7.77	32.69	6.46	33.59
127	114	4153.2	6823.4	17	5	2006	14:38	203	7.63	32.59	6.64	33.73
128	115	4153.4	6816.6	17	5	2006	15:26	222	7.64	32.64	7.02	33.96
129	116	4153.2	6809.8	17	5	2006	16:19	189	7.73	32.63	5.69	33.21
130	117	4153.2	6803.1	17	5	2006	17:10	112	7.74	32.63	6.66	32.81
131	215	4141.3	6816.7	17	5	2006	19:37	36	8.14	32.56	7.96	32.57
132	214	4141.4	6823.3	17	5	2006	20:19	65	7.63	32.62	5.91	32.89
133	213	4141.4	6830.0	17	5	2006	21:04	181	8.20	32.63	5.51	33.12
134	212	4141.3	6836.7	17	5	2006	21:49	171	8.24	32.70	5.64	33.18
135	211	4141.4	6843.4	17	5	2006	22:37	161	8.26	32.51	5.61	33.17
136	210	4141.3	6850.1	17	5	2006	23:23	158	8.17	32.39	5.48	33.11
137	209	4141.3	6856.9	18	5	2006	0:10	164	8.12	32.24	5.62	33.17
138	208	4141.3	6903.6	18	5	2006	0:56	170	8.53	31.89	5.55	33.11
139	207	4141.5	6910.2	18	5	2006	1:42	181	8.41	32.03	5.87	33.25
140	206	4141.5	6916.8	18	5	2006	2:30	201	8.54	31.74	6.24	33.41
141	205	4141.3	6923.7	18	5	2006	3:22	169	8.60	31.70	5.46	33.03
142	204	4141.4	6930.4	18	5	2006	4:10	118	8.81	31.61	4.79	32.64
143	203	4141.4	6937.1	18	5	2006	4:55	124	9.09	31.73	5.03	32.40
144	202	4141.3	6943.9	18	5	2006	5:39	67	9.15	31.74	5.82	32.22
145	201	4141.4	6950.6	18	5	2006	6:19	29	8.96	31.79	6.87	32.01
146	303	4129.4	6937.1	18	5	2006	7:52	31	7.13	32.12	7.03	32.13
147	304	4129.4	6930.6	18	5	2006	8:36	38	8.39	31.84	6.61	32.19
148	305	4129.5	6923.7	18	5	2006	9:19	63	8.47	31.81	5.64	32.44
149	306	4129.4	6917.0	18	5	2006	10:01	103	8.37	31.85	4.80	32.59
150	307	4129.2	6910.2	18	5	2006	10:55	160	8.43	31.88	5.06	32.84
151	308	4129.5	6903.7	18	5	2006	11:45	140	8.45	31.91	5.22	32.93

2006 GSC Right Whale Survey Leg2
16 - 26 May, 2006

Cast #	Sta #	Lat	Long	Day	Mo	Year	Time (GMT)	Btm Depth (Meters)	Sfc Temp	Sfc Salt	Btm Temp	Btm Salt
152	309	4129.5	6857.2	18	5	2006	12:28	154	8.37	31.86	5.38	33.03
153	310	4129.5	6850.4	18	5	2006	13:16	132	8.24	32.32	5.47	33.07
154	311	4129.3	6843.9	18	5	2006	13:58	134	8.29	32.51	5.50	33.08
155	312	4129.4	6837.2	18	5	2006	14:43	105	8.32	32.70	5.49	33.03
156	313	4129.4	6830.6	18	5	2006	15:25	95	8.21	32.66	5.75	32.94
157	314	4129.5	6823.8	18	5	2006	16:12	49	7.63	32.63	7.13	32.68
158	412	4117.6	6837.4	18	5	2006	18:36	68	7.87	32.60	7.10	32.66
159	411	4117.5	6843.8	18	5	2006	19:16	82	7.77	32.63	6.47	32.76
160	410	4117.4	6850.5	18	5	2006	20:01	106	9.02	32.35	5.81	32.84
161	409	4117.4	6857.1	18	5	2006	20:47	135	9.27	32.39	5.39	32.93
162	408	4117.3	6903.9	18	5	2006	21:34	158	8.55	32.29	5.22	32.90
163	407	4117.3	6910.5	18	5	2006	22:22	99	8.71	32.11	4.98	32.66
164	406	4117.2	6917.2	18	5	2006	23:07	82	8.55	32.28	5.58	32.54
165	405	4117.1	6923.9	18	5	2006	23:49	43	6.93	32.26	6.70	32.29
166	506	4105.5	6916.4	19	5	2006	1:10	57	6.54	32.51	6.52	32.51
167	507	4105.2	6910.7	19	5	2006	1:46	62	6.68	32.53	6.15	32.65
168	508	4105.4	6904.1	19	5	2006	2:30	94	8.23	32.37	5.42	32.71
169	509	4105.4	6857.6	19	5	2006	3:16	90	7.06	32.65	6.68	32.67
170	510	4105.5	6850.8	19	5	2006	4:01	72	7.09	32.62	6.88	32.66