

*Oceanography Branch CTD Data Report
Northern Right Whale Habitat Study - DE0803*

**For further information, contact Cristina Bascuñán
National Marine Fisheries Service, Northeast Fisheries Science
Center, Woods Hole, Massachusetts 02543-1097.**

DATE: February 17 – March 7, 2008

Oceanography Branch CTD Data Report

CTD_REPORT_2008003DE

NOAA Fisheries Service
Northeast Fisheries Science Center
Woods Hole, MA 02543

DE 08-03
Northern Right Whale Habitat Study
Data Coverage: February 17 – March 7, 2008
Gulf of Maine

This report presents a summary of surface and bottom temperature and salinity data collected during the Northeast Fisheries Science Center's 2008 Northern Right Whale Habitat Study aboard the NOAA FRV *Delaware II*. All data was obtained with a Seabird Electronics SBE Model 19 profiling CTD's (s/n's 4684, 4501, and 4477).

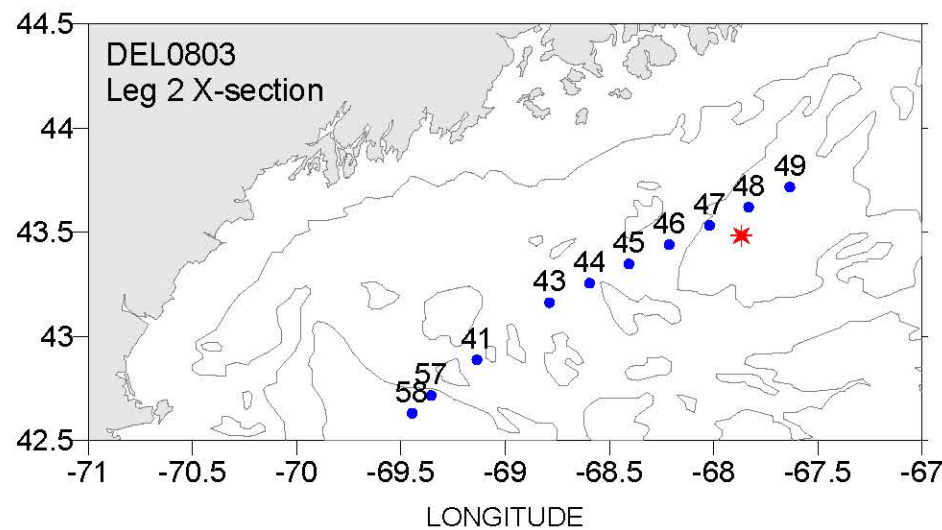
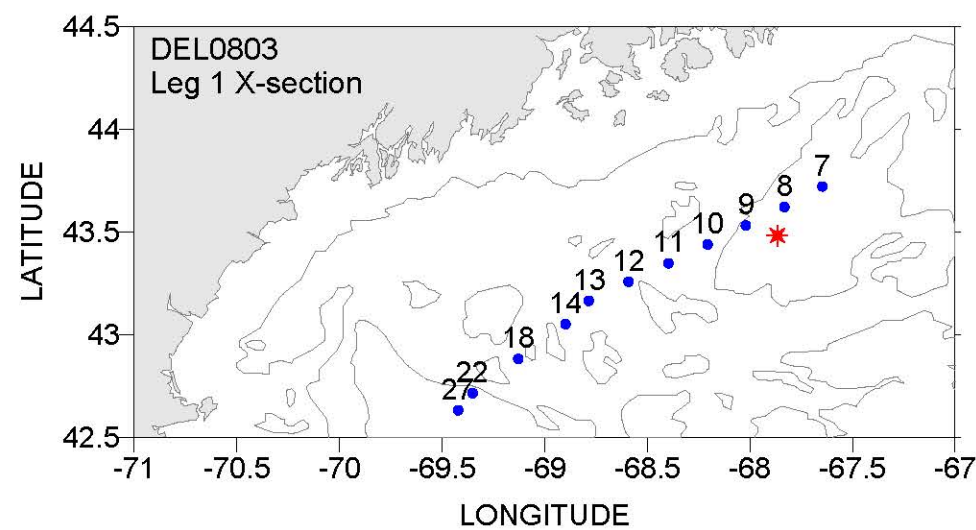
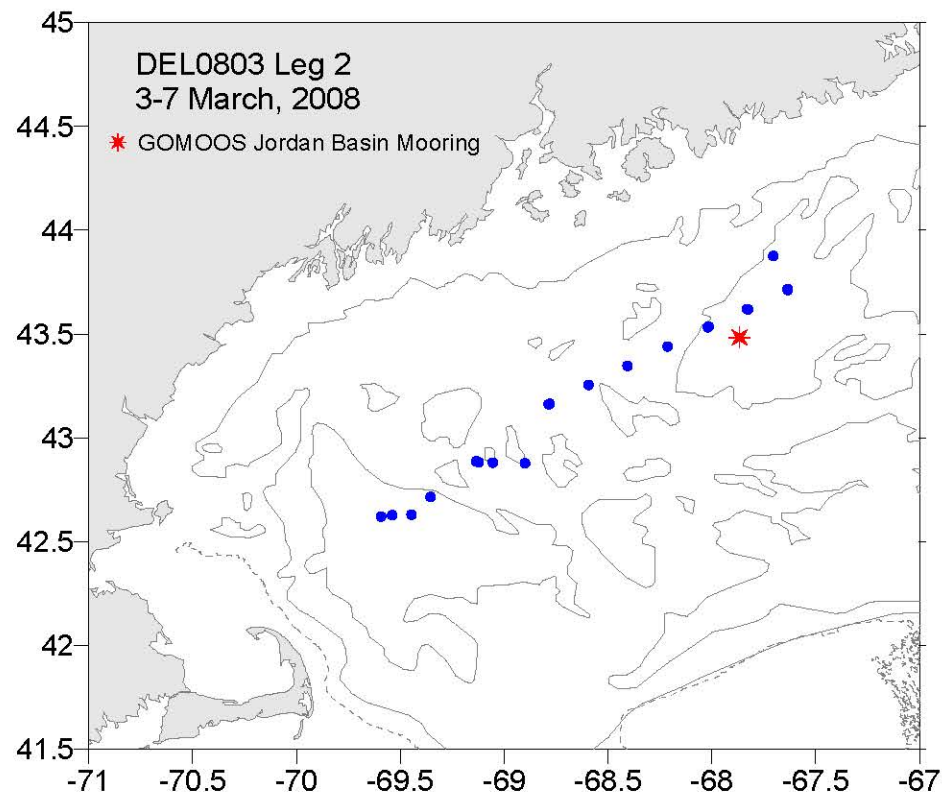
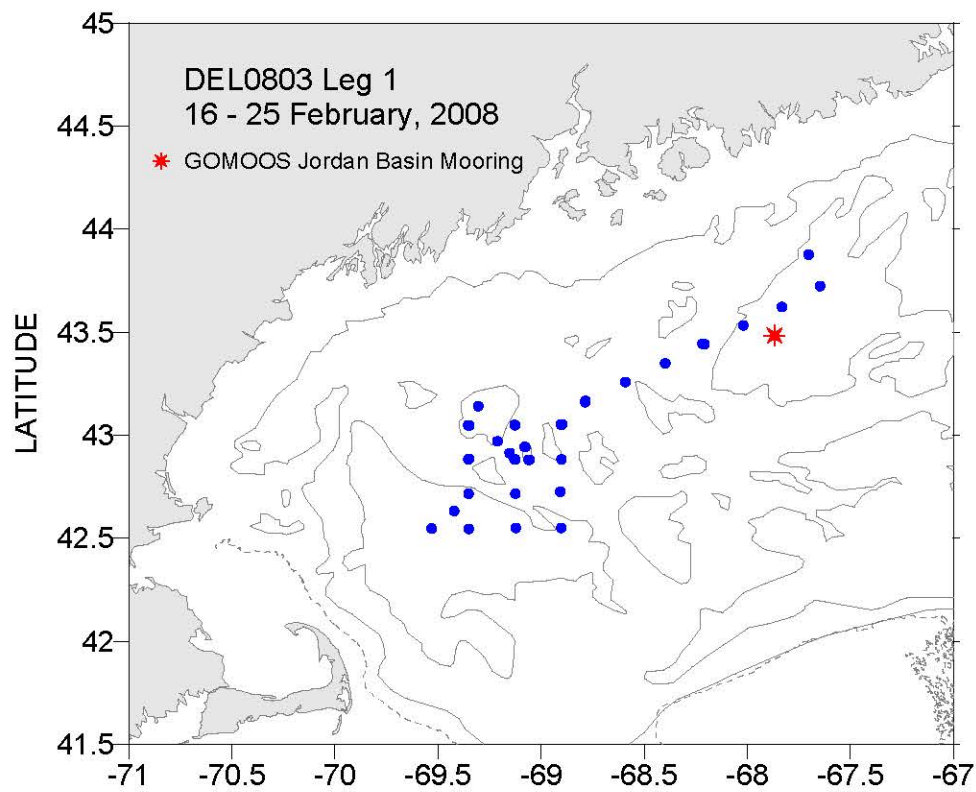
Data presented here have been audited, however, corrections and/or updates may be applied at a later time. The most recent and complete station data can be found in an NODC formatted ASCII file at:
<ftp://ftp.nefsc.noaa.gov/pub/hydro/del0803.dat>

This report may be viewed on the Oceanography Branch website at:

<http://www.nefsc.noaa.gov/HydroAtlas/>

choose: **2008 Cruises**
FEB_WHALE_DEL0803
CTD_REPORT_2008003DE.pdf

Revised: July 20, 2009



DEL0803 - Right Whale Habitat Study

17 February - 7 March, 2008

Cast #	Sta #	Lat	Long	Day	Mo	Yr	Time (GMT)	Station Depth (m)	Sfc Temp	Sfc Salt	Sfc Depth	Btm Temp	Btm Salt	Deepest Obs	Meters from Bottom
1	1	4254.8	6909.2	17	2	2008	12:43	182	5.02	33.14	1	5.72	33.33	176	6
2	2	4309.6	6847.2	17	2	2008	15:34	178	4.34	32.76	17	5.70	33.19	126	52
3	3	4315.5	6835.4	17	2	2008	16:58	182	4.38	32.75	1	7.21	33.88	177	5
4	4	4320.9	6823.9	17	2	2008	18:25	176	4.00	32.64	7	6.89	33.71	149	27
6	6	4352.5	6742.2	21	2	2008	11:58	227	3.80	32.48	3	7.21	34.22	222	5
7	7	4343.3	6738.8	21	2	2008	15:37	239	3.84	32.52	1	7.19	34.22	237	2
8	8	4337.3	6749.9	21	2	2008	17:17	245	3.95	32.59	1	7.17	34.23	242	3
9	9	4331.9	6801.2	21	2	2008	20:19	212	3.99	32.60	1	7.14	34.18	210	2
10	10	4326.4	6812.4	21	2	2008	21:49	181	3.86	32.65	1	6.98	34.06	177	4
11	11	4320.9	6823.8	21	2	2008	23:17	183	4.09	32.71	1	7.04	33.90	180	3
12	12	4315.5	6835.5	22	2	2008	0:46	179	4.20	32.75	1	6.81	33.68	174	5
13	13	4309.9	6847.1	22	2	2008	2:15	173	4.12	32.73	1	7.10	33.92	170	3
14	14	4303.1	6853.9	22	2	2008	3:31	164	3.98	32.71	1	7.10	34.11	161	3
15	15	4303	6907.7	22	2	2008	4:55	141	4.16	32.81	1	5.25	33.22	136	5
16	16	4302.9	6921.3	22	2	2008	6:13	188	4.93	33.17	1	6.33	33.50	186	2
17	17	4252.9	6921.2	22	2	2008	7:34	150	4.90	33.16	1	5.76	33.39	150	0
18	18	4252.9	6907.8	22	2	2008	9:08	163	5.06	33.19	1	5.44	33.27	159	4
19	19	4252.9	6854.1	22	2	2008	10:23	92	4.13	32.80	1	5.14	33.12	88	4
20	20	4243.5	6854.5	22	2	2008	11:51	128	4.71	33.10	1	5.75	33.40	124	4
21	21	4242.9	6907.5	22	2	2008	13:13	151	4.33	32.97	1	5.92	33.45	151	0
22	22	4242.9	6921.1	22	2	2008	15:01	210	4.91	33.15	1	6.83	34.01	209	1
23	23	4232.7	6921.1	22	2	2008	17:02	230	4.95	33.14	12	5.49	33.30	120	110
24	24	4233	6907.4	22	2	2008	19:34	211	4.89	33.13	15	6.87	34.01	208	3
25	25	4233	6854.1	22	2	2008	21:01	181	5.07	33.16	9	5.77	33.39	132	49
26	26	4232.8	6931.9	23	2	2008	19:32	286	4.85	33.14	8	7.00	34.23	269	17
27	27	4237.9	6925.3	23	2	2008	22:12	233	4.80	33.12	1	6.92	34.05	230	3
28	28	4252.8	6903.4	24	2	2008	1:19	194	4.18	32.84	1	6.20	33.58	189	5
29	29	4256.5	6904.6	24	2	2008	2:16	209	4.12	32.86	1	6.19	33.56	206	3
30	30	4303.1	6854.3	24	2	2008	3:50	162	3.91	32.72	1	6.74	33.81	158	4
31	31	4302.9	6907.6	24	2	2008	5:09	145	4.04	32.77	1	5.34	33.21	129	16
32	32	4308.4	6918.3	24	2	2008	6:31	208	4.82	33.13	1	6.50	33.56	204	4
33	33	4302.8	6920.9	24	2	2008	7:37	190	4.82	33.15	1	6.26	33.46	184	6
34	34	4258.2	6912.7	24	2	2008	9:01	211	4.85	33.15	1	6.19	33.46	206	5

Cast #	Sta #	Lat	Long	Day	Mo	Yr	Time (GMT)	Station Depth (m)	Sfc Temp	Sfc Salt	Sfc Depth	Btm Temp	Btm Salt	Deepest Obs	Meters from Bottom
35	35	4253.1	6921	24	2	2008	10:18	150	4.65	33.09	1	5.87	33.42	143	7
36	36	4252.9	6907.6	24	2	2008	11:52	162	4.92	33.16	1	5.33	33.24	158	4
37	37	4256.6	6904.8	24	2	2008	12:58	205	4.11	32.86	1	6.12	33.53	202	3
38	38	4252.8	6903.6	24	2	2008	14:07	195	4.22	32.84	1	6.20	33.57	191	4
39	39	4252.8	6903.4	24	2	2008	14:43	190	4.39	32.99	1	4.58	33.05	16	174
40	40	4252.3	6902.6	24	2	2008	16:22	189	4.36	32.83	1	6.29	33.62	188	1
41	41	4253.2	6908.1	3	3	2008	11:40	166	4.57	33.06	1	5.40	33.28	162	4
42	42	4309.8	6846.9	3	3	2008	14:19	177	4.03	32.80	6	6.72	33.73	169	8
43	43	4309.7	6847.2	3	3	2008	14:52	173	4.11	32.80	1	6.75	33.74	170	3
44	44	4315.3	6835.7	3	3	2008	16:07	177	4.07	32.79	1	6.74	33.73	173	4
45	45	4320.8	6824.4	3	3	2008	17:27	192	3.75	32.59	1	7.03	33.95	181	11
46	46	4326.4	6812.8	3	3	2008	18:58	182	3.67	32.58	1	6.98	34.07	177	5
47	47	4331.9	6801.2	3	3	2008	20:22	214	3.73	32.59	1	7.10	34.16	209	5
48	48	4337.2	6749.9	3	3	2008	21:51	244	3.75	32.62	1	7.16	34.21	237	7
49	49	4342.9	6738.1	3	3	2008	23:22	238	3.68	32.59	1	7.69	34.32	234	4
50	50	4352.5	6742.3	6	3	2008	16:58	206	4.02	32.52	1	7.65	34.26	203	3
51	51	4342.7	6738.1	6	3	2008	18:38	236	4.19	32.64	1	7.54	34.28	232	4
52	52	4337.1	6749.6	6	3	2008	20:19	241	4.15	32.63	1	7.24	34.22	237	4
53	53	4332.1	6801	6	3	2008	23:01	215	4.08	32.53	1	7.19	34.20	211	4
54	54	4252.6	6854	7	3	2008	11:40	90	4.08	32.72	1	4.54	32.94	85	5
55	55	4252.8	6903.3	7	3	2008	12:41	202	4.48	32.92	1	6.08	33.55	192	10
56	56	4252.9	6907.4	7	3	2008	14:30	165	4.63	33.01	1	5.38	33.28	161	4
57	57	4242.9	6921.3	7	3	2008	16:46	222	4.39	32.85	1	6.75	33.93	220	2
58	58	4237.8	6926.8	7	3	2008	17:58	239	4.95	33.12	1	6.90	34.07	233	6
59	59	4237.6	6932.4	7	3	2008	19:06	257	4.96	33.15	1	6.96	34.17	256	1
60	60	4237.2	6935.6	7	3	2008	21:34	288	4.81	33.10	1	6.95	34.21	284	4

Regional average surface and bottom temperature / salinity and anomalies for the Right Whale Habitat Study DEL0803.

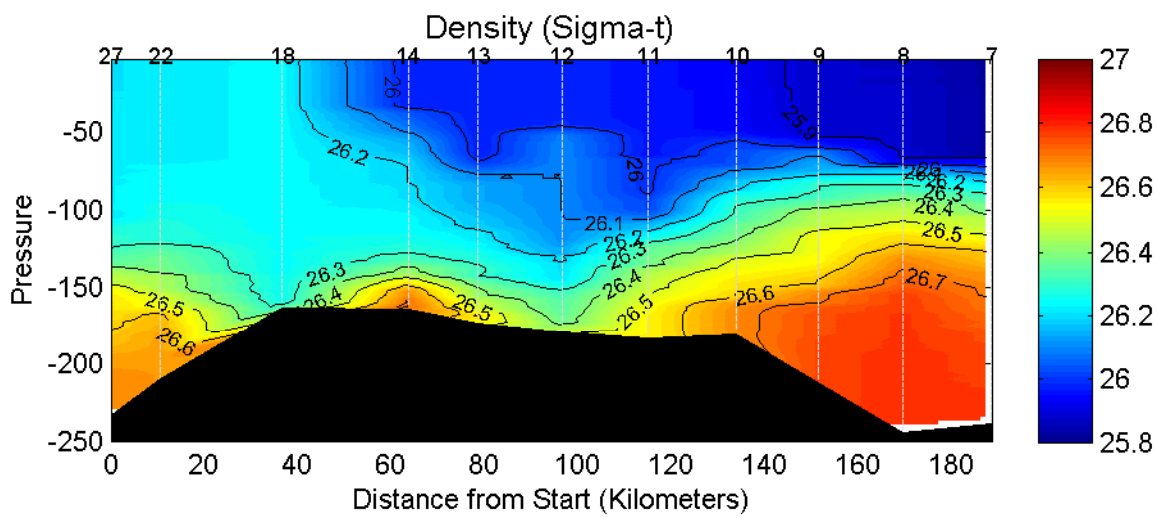
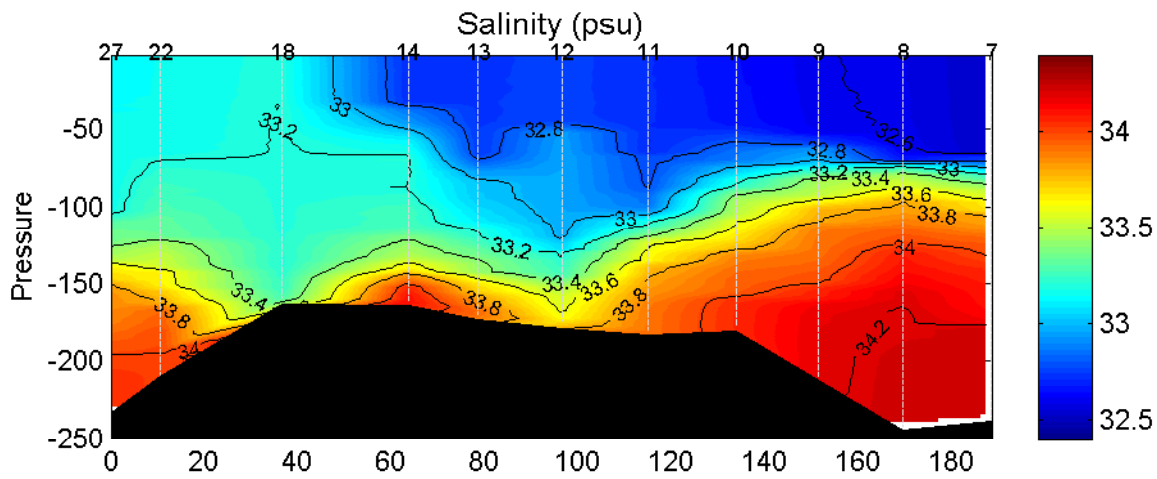
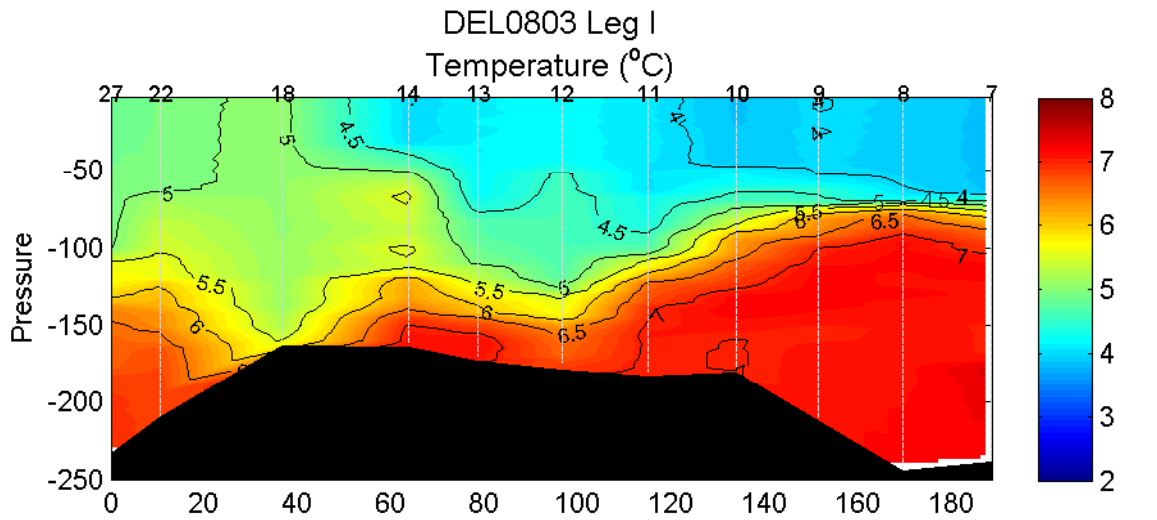
Decimal Year Day	Number of Surface obs	Surface Temp/Salt	Surface T/S Anomaly	SDV1	SDV2	Surface Flag*	Number of Bottom obs.	Bottom Temp/Salt	Bottom T/S Anomaly	SDV1	SDV2	Bottom Flag*
2008.16	8	3.92	-0.58	0.33	0.84	1	8	7.36	-0.20	0.34	1.55	1
2008.16	8	32.58	-0.28	0.21	0.37	1	8	34.25	0.02	0.16	0.55	1
2008.16	44	4.39	-0.37	0.16	0.31	1	45	6.39	0.15	0.14	0.62	1
2008.16	44	32.91	-0.14	0.11	0.15	1	45	33.71	-0.08	0.07	0.22	1

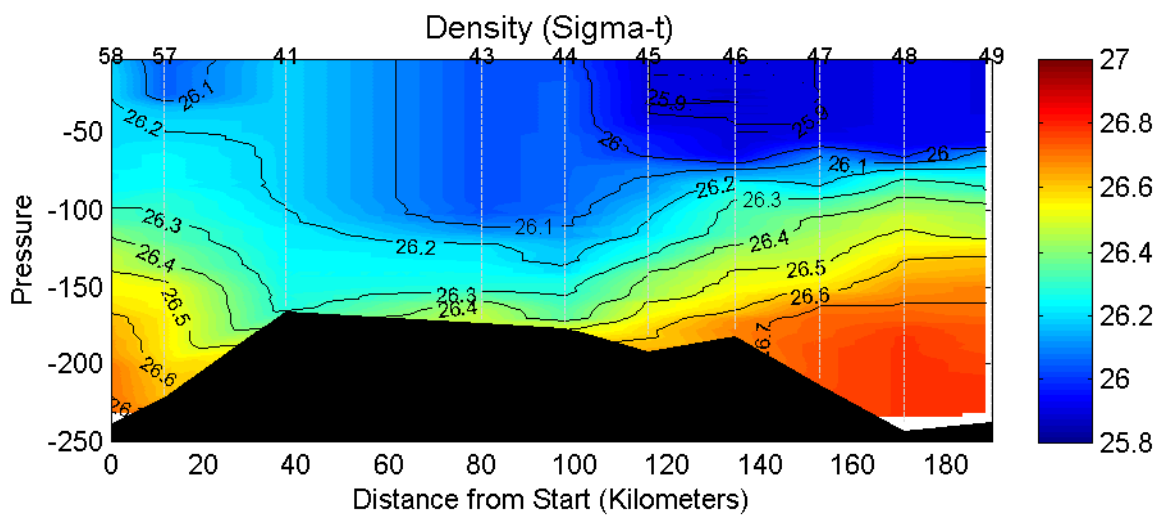
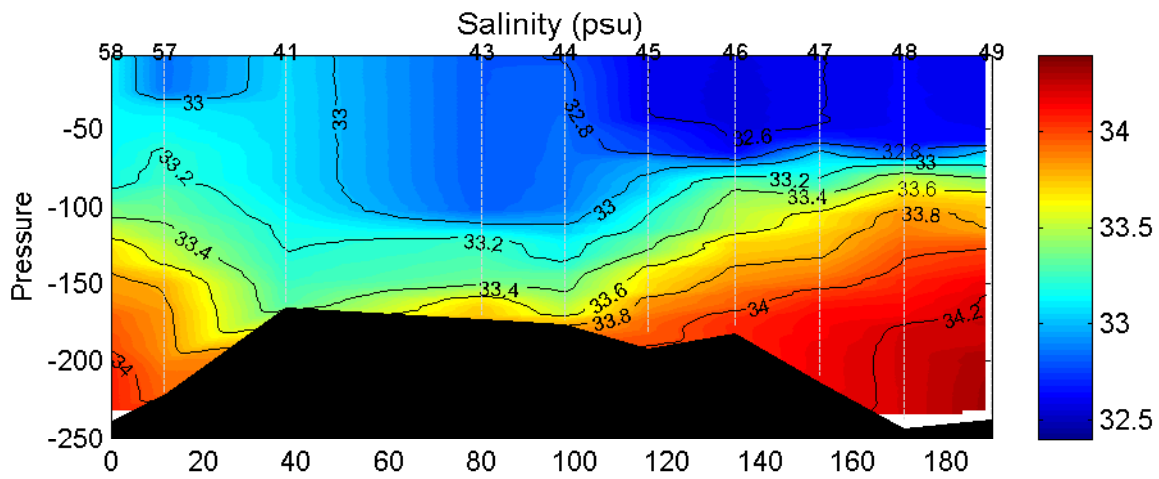
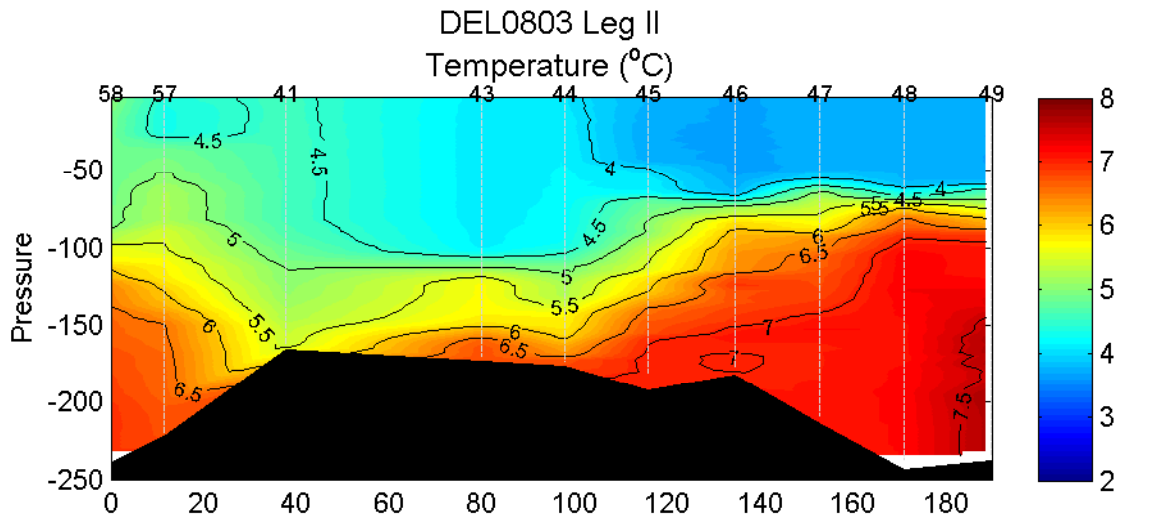
Gulf of Maine East

Gulf of Maine West

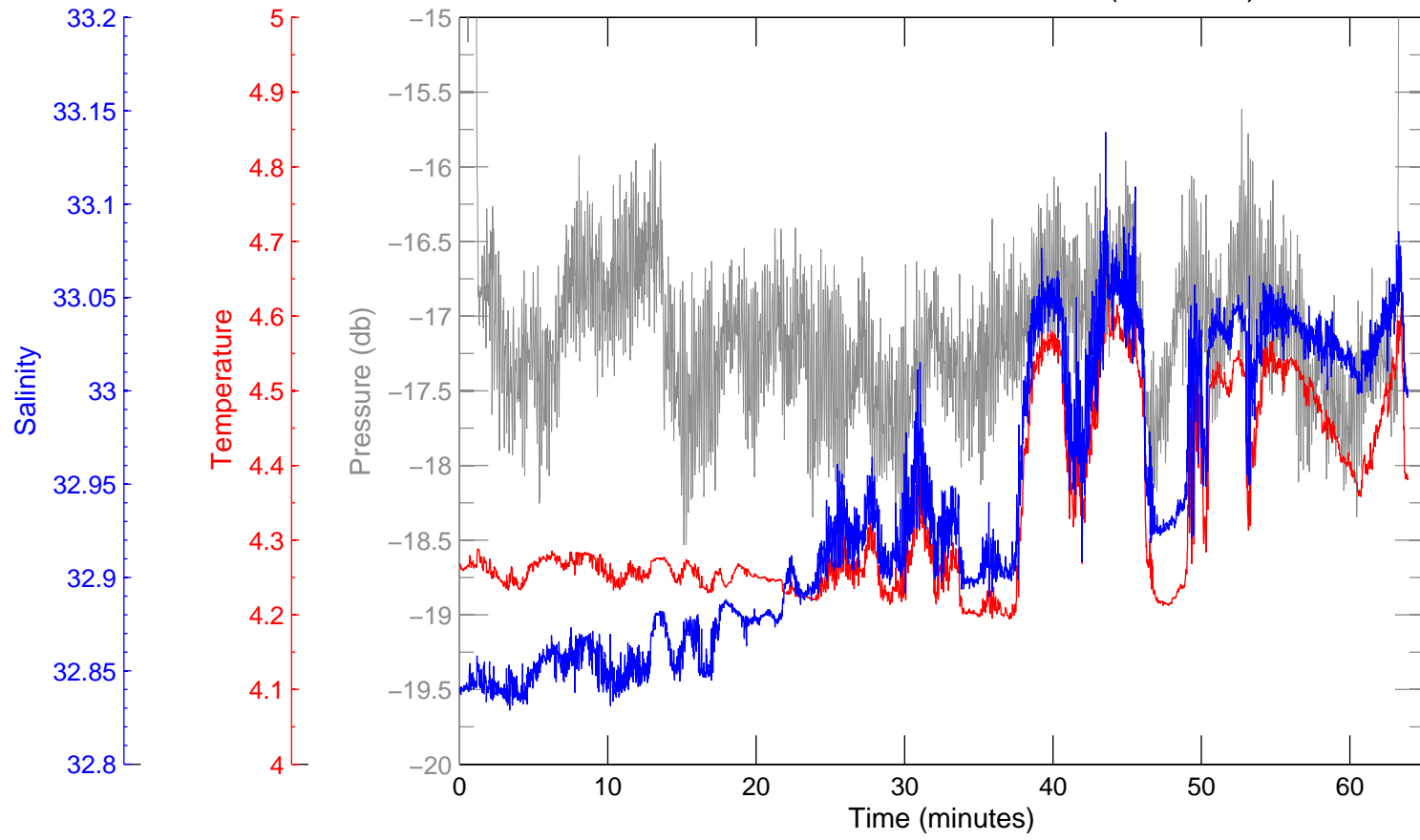
* A Flag value of 0 indicates that there were enough observations to calculate an area weighted value for the region.
 A Flag value of 1 indicates that the spatial distribution of the observations was not sufficient to calculate an area weighted average for the region, and instead a simple average of the observations was calculated.

** SDV1 = the standard deviation associated with the average temperature / salinity
 the standard deviation of the individual anomalies from which the average anomaly was derived
 SDV2 =

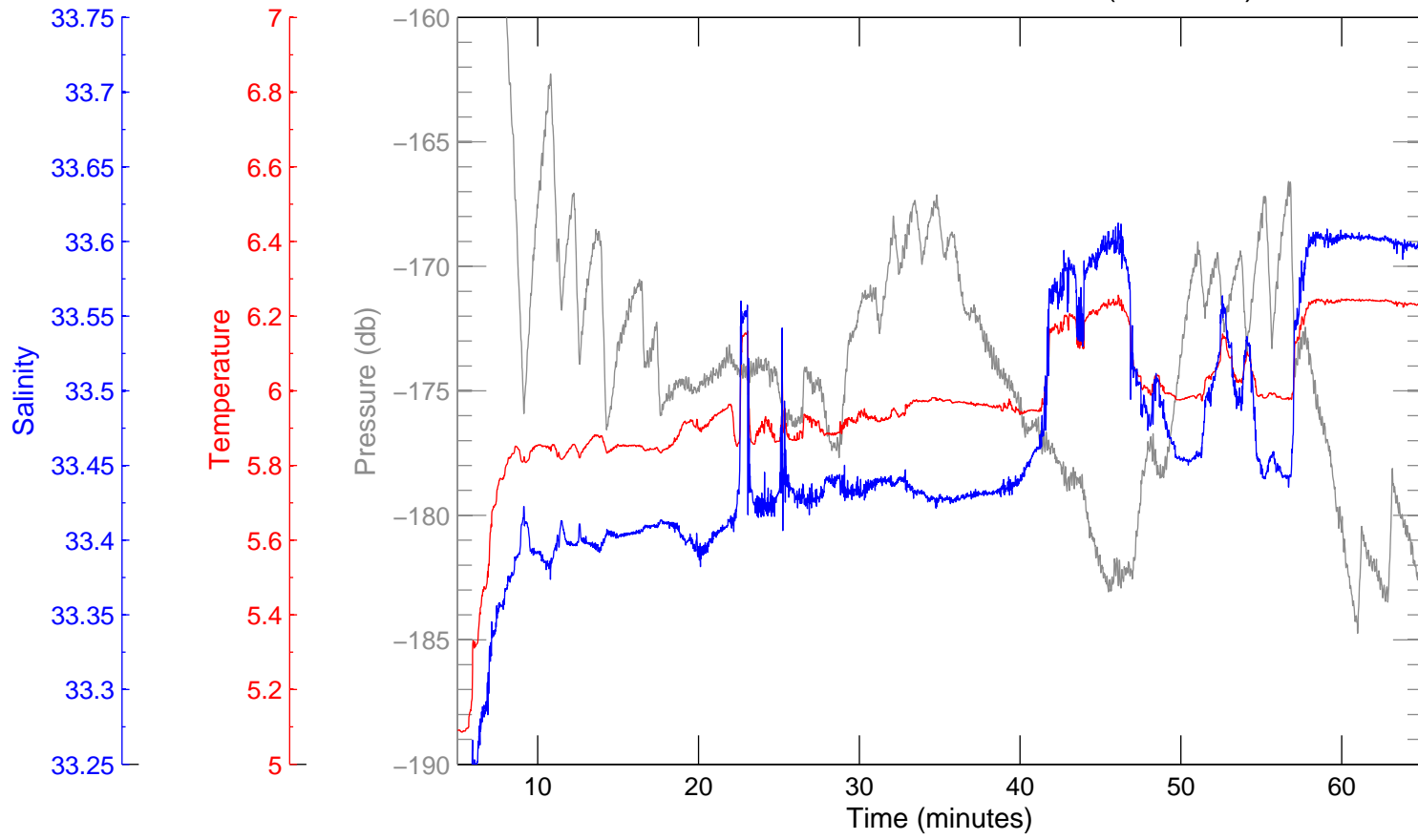




Cast/Sta 39 Time Series Station (sbe-19+)

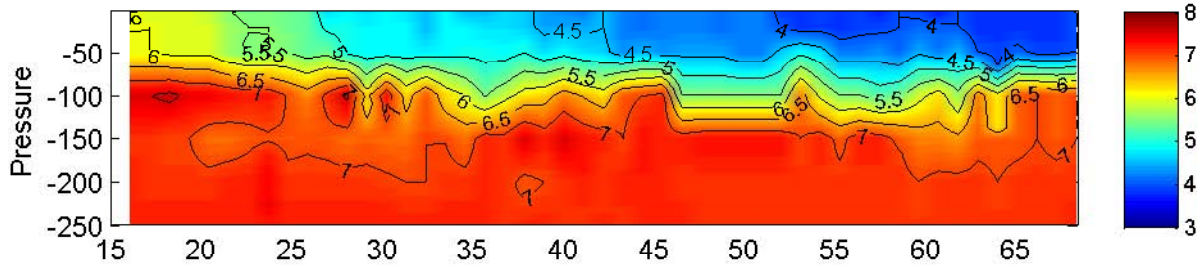


Cast/Sta 40 Time Series Station (sbe-19+)

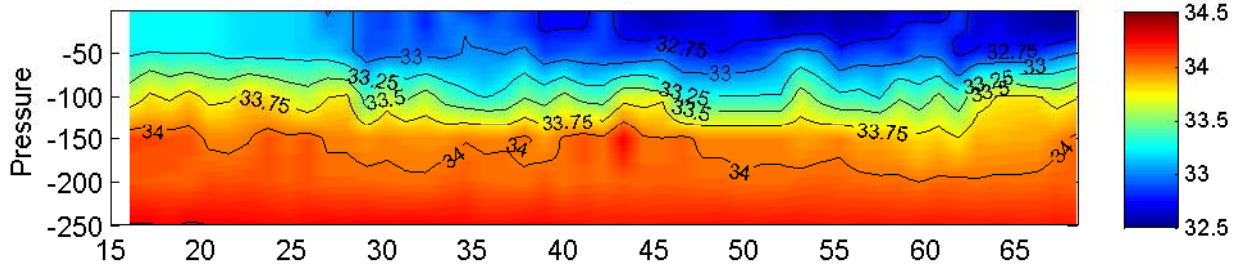


Jordan Basin - 15 January - 8 March, 2008

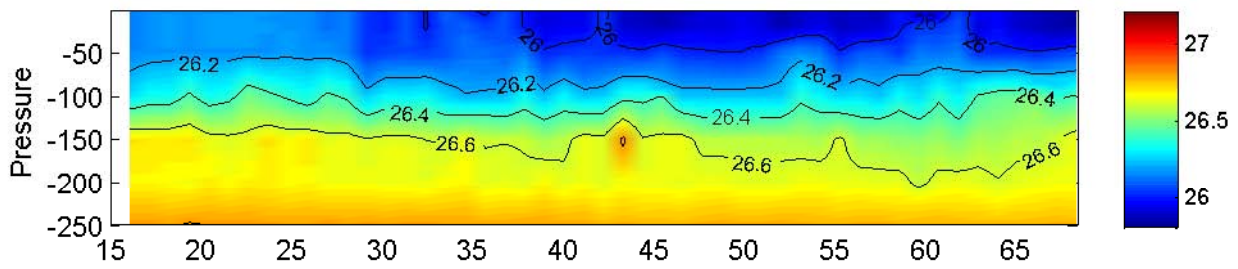
Temperature



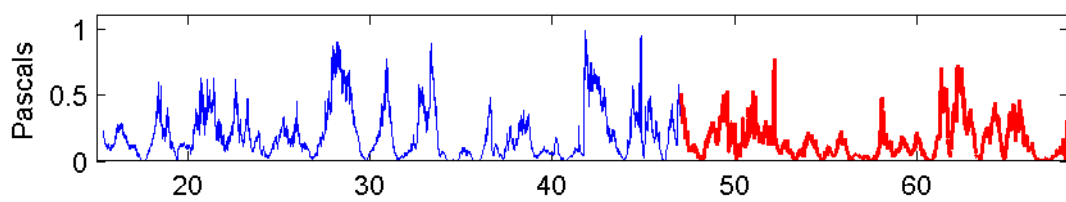
Salinity



Density



Wind Stress



Air Temperature

