

MILL CREEK

HISTORIC RESTORATION

Final Report for Contract #LRP-98

Coastal Management Program  
Division of Land Resource Programs  
Department of Natural Resources  
State of Michigan

Submitted by

Mackinac Island State Park Commission  
Mackinac Island, Michigan

October 26, 1979

F572.M14M55 1979

Total Project	\$35,265.55
Coastal Management Program (Provided by the Coastal Zone Management Act of 1972 administered by the Office of Coastal Zone Management National Oceanic and Atmospheric Administration.)	24,000.00
Mackinac Island State Park Commission	11,265.55

F  
572  
.M14  
M55  
1979

October 26, 1979

Mill Creek Historic Restoration  
Final Report for Contract #LRP-98

Mill Creek State Park, a registered National Historic Site, is a major historic resource in Michigan. It is the site of the remains of an early industrial complex of mills which supported 18th and early 19th century operations in the Mackinac Straits area. A plan for developing and interpreting the site has been developed.

It is the long range goal of the Mackinac Island State Park Commission to develop the site as an interpretive historic park, including the reconstruction of the dam and the sawmill. The plan envisions an interpretive visitor center and a number of ancillary theme areas.

Under this contract three tasks have been accomplished. First, archaeological investigation of the site; second, clearing roads and parking lot; and third, construction of 14 outdoor displays. Though it had been hoped to also construct one-fourth mile of trail, this was not possible since the task of clearing roads and parking lot took longer than anticipated.

Task I Archaeological Research: The sites for future roads, trail, parking lot, and interpretive buildings were searched and no archaeological sites were located. Excavations were conducted on the site of the dam to determine exactly how it was constructed so it could be reconstructed (see photograph C). A large area was searched for the location of the mill. Since the mill was not found, it is assumed that it stood over the creek and was

washed away. The site of one of the buildings in the mill complex was partially excavated. A detailed 54 page archaeological report written by Thomas B. Ford is attached to this report.

Task II Clearing Roads and Parking Lot: An entrance and exit road totaling 1,950 feet was cut 30 feet wide through thick woods. The road was not cut all the way through to Route 27, but stopped at the railroad track. This was done to discourage casual visitors from entering the site during construction. The route was selected to leave large trees and to fit into the natural lay of the land without undue disturbance. The logs were cut into fireplace lengths for use at Fort Michilimackinac. The stumps and large rocks were removed by pushing them out with the park's caterpillar tractor. All of the brush was chipped by the park's brush chipper. The work was accomplished by Harold Crane, a park employee, and a crew of inmate laborers from Camp Pellston Labor Camp. Joel Frye assisted during the month of September and Assistant Park Manager James Debelak served as general supervisor and coordinator.

Besides the entrance and exit road clearing, a parking lot a little more than an acre in extent, was also cleared. Limited clearing was also done on the site of the interpretive center and the 450 foot long Overlook Trail.

The areas of clearing are marked in red on the master map. Also on the map are indicated the locations from which photographs A, B, and C were taken. The first two photographs show the access road and the parking lot.

Work on the clearing projects was done between July 1 and September 30, 1979.

Task III Construction of Outdoor Displays: A letter of agreement was signed with Victor Hogg of Riverbend Studio to construct 14 outdoor exhibits. The displays were made so they could be imbedded in fiberglass to make them permanent. A drawing of the type of display is enclosed. The stands were made of steel to make them vandal proof. The displays will not be erected until the park is ready to open for visitors in order to protect them from destruction in the meantime.

The four large displays (24" x 32") are entitled as follows:

1. Welcome to Mill Creek.
2. The Changing Scene (climate changes at the site).
3. The Age of Ice (the impact of glaciers in the straits).
4. Changing Lake Levels.

These large displays will be installed at the overlook platform when it is constructed.

Ten smaller displays (18" x 24") entitled as follows will be scattered around the site at appropriate locations.

1. Mill Creek Mystery (the discovery of a 1771 soldier's burial on the site).
2. The Importance of Wood.
3. The Dam.
4. Mill Creek (the size of the watershed).
5. Soldiers at Mill Creek.
6. Discovery of the Past (the process of archaeology).
7. Building of Fort Mackinac (the use of wood from the mill on Mackinac Island).
8. Campbell Residence.
9. Saw Mill - A New Technology.
10. Sawing Boards.

Conclusion: An examination of the financial reporting sheet will show that the Mackinac Island State Park Commission has contributed \$5,265.55 more in matching funds than was budgeted. This indicates that we found the project to be so exciting and worthwhile that we plunged in a bit deeper than we expected. We look forward enthusiastically to continuing the development of Mill Creek as funds become available.



David A. Armour  
Assistant Superintendent  
Mackinac Island State Park

October 26, 1979

Contract #LRP98  
Mill Creek Development Expenditures

Archaeological Field Crew

Salaries:		
Ford	\$4,200.00	
Hauser	1,224.00	
Parachina	1,224.00	
Hogg	1,101.00	
Lillis	<u>4,236.00</u>	
		\$11,986.00

Fringe Benefits		1,857.83
-----------------	--	----------

Mackinac Island State Park Commission Staff

Salaries:		
Heldman	\$2,231.76	
Crane	2,387.40	
Debelak	501.60	
Frye	569.50	
Armour	<u>1,841.86</u>	
		7,532.12

Fringe Benefits at 21%		<u>1,581.75</u>
------------------------	--	-----------------

Total Salaries		\$22,957.70
----------------	--	-------------

Archaeological Supplies		451.85
-------------------------	--	--------

Equipment Rental		
Backhoe		100.00
Chevy Van #12-448		
Transport archaeological crew		
1,200 miles at 17¢ per mile		204.00
Chevy Van #120763		
Transport prison crew from Pellston		
3,100 miles at 17¢ per mile		527.00
Caterpillar tractor operation		
60 days at \$15.00 per day		<u>900.00</u>

Total Supplies and Equipment		\$ 2,182.85
------------------------------	--	-------------

Staff Housing

Value of quarters furnished by Mackinac Island State Park Commission		
House and laboratory space for Tom Ford		
5 months at \$250 per month		1,250.00
Housing for archaeological crew		
Cabin for Lillis & Hogg		
4 months at \$125 per month		500.00
Cabin for Hauser and Parachina		
3 months at \$125 per month		375.00

Contract with Victor Hogg for 14 outdoor displays \$ 8,000.00

Grand Total \$35,265.55

Summary

Salaries \$22,957.70  
Supplies & Equipment 2,182.85  
Staff Housing 2,125.00  
Display Contract 8,000.00

Grand Total \$35,265.55

Total Project \$35,265.55

Coastal Management Program 24,000.00

Mackinac Island State Park Match \$11,265.55



Photograph A.

Looking west from parking area along the cleared entrance road. Some stumps still need to be removed from the roadway which is thirty feet wide.





Photograph B.

Looking west across the parking lot. Most of the stumps have been removed and the brush clipped. Large stones have also been removed.



Photograph C.

Original timbers of the mill dam still in place. The strings locate the archaeological squares.

--- TITLE (12 PT.) / HAVENKA. MOD.

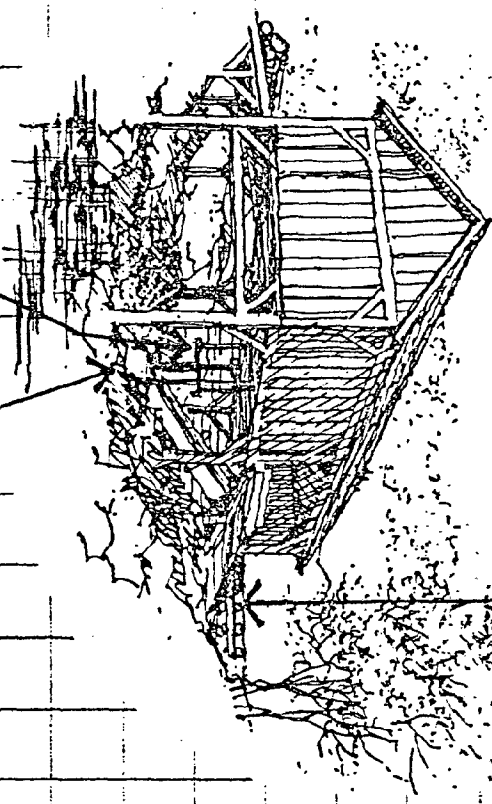
# THE MILL

--- 1" RADIUS



(SKETCHES OR PHOTOS)

LOG DAM



TUB WHEEL

SAW



DISPLAY LOGO

M... ..  
 M... ..  
 M... ..  
 M... ..  
 M... ..  
 M... ..  
 M... ..  
 M... ..  
 M... ..  
 M... ..

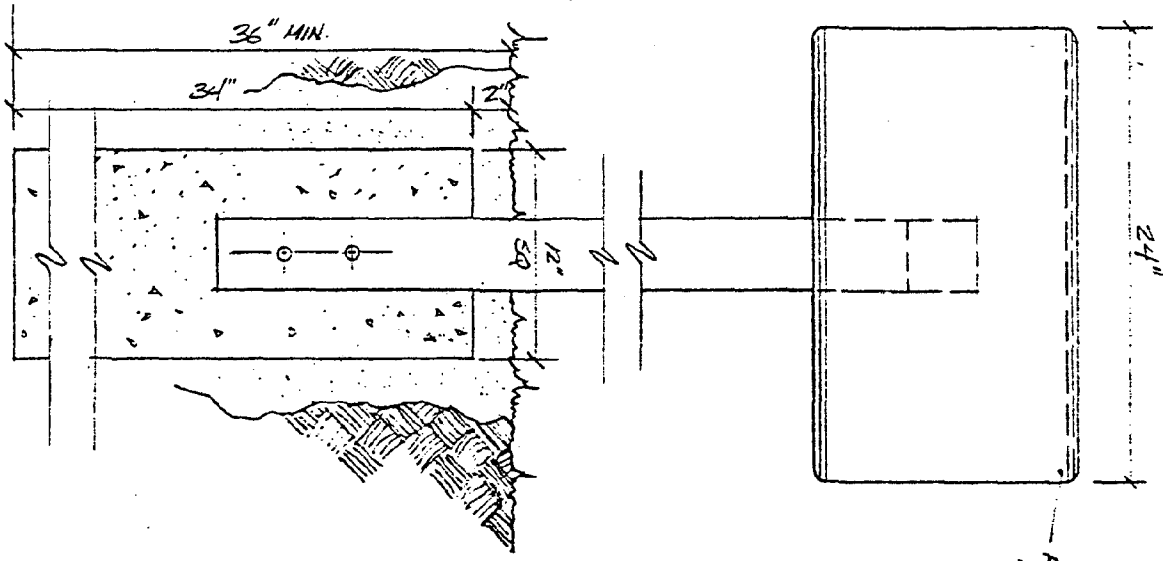
(TEXT / TYPE-SIZE - 36PT.+)

18"

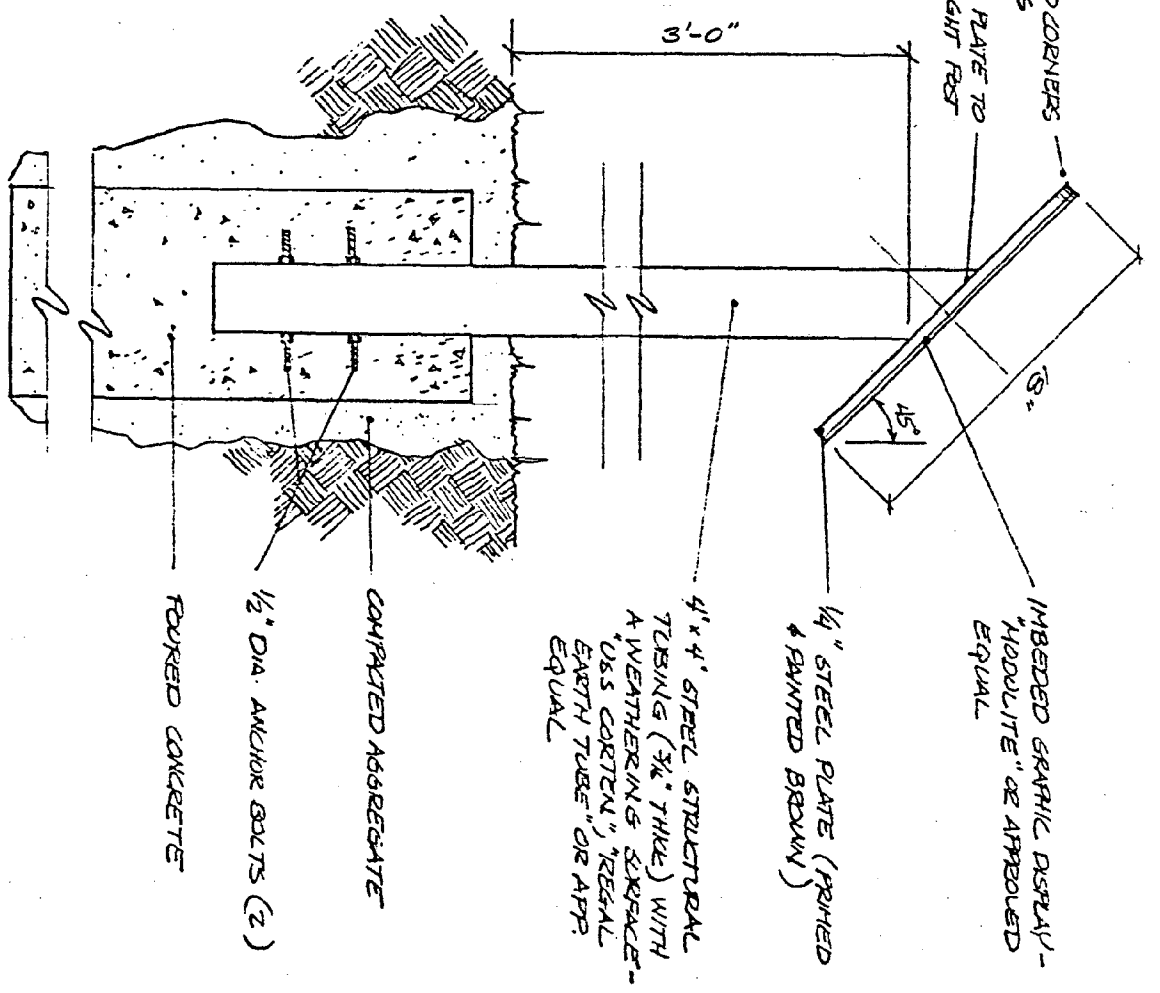
24"

(ALTERNATE SIZE - 14" x 33")

APPLY DISPLAY ONTO  
STEEL PLATE WITH  
SUITABLE OUTDOOR  
ADHESIVE



FRONT ELEVATION  
SCALE 1/2" = 1'-0"



SIDE ELEVATION

4" x 4" STEEL STRUCTURAL  
TUBING (3/8" THICK) WITH  
A WEATHERING SPACE-  
USS COATING, "REAL  
EARTH TUBES" OR APP.  
EQUAL

1/4" STEEL PLATE (PAINTED  
& BROWN)

IMBEDDED GRAPHIC DISPLAY -  
"MODULITE" OR APPROVED  
EQUAL

POURED CONCRETE

1/2" DIA. ANCHOR BOLTS (2)

COMPACTED AGGREGATE

ROUNDED CORNERS  
1" RADIUS  
WELD PLATE TO  
UPRIGHT POST

NOAA COASTAL SERVICES CENTER LIBRARY



3 6668 14104 8514

