

# Herbivore biocontrol and manual removal successfully reduce invasive macroalgae on coral reefs

Brian J. Neilson<sup>1</sup>, Christopher B. Wall<sup>2</sup>, Frank T. Mancini<sup>2</sup> and Catherine A. Gewecke<sup>1</sup>

<sup>1</sup> State of Hawai'i Division of Aquatic Resources, Honolulu, Hawai'i, United States of America

<sup>2</sup> Hawai'i Institute of Marine Biology, University of Hawai'i at Mānoa, Kāne'ohe, Hawai'i, United States of America

## ABSTRACT

Invasive macroalgae pose a serious threat to coral reef biodiversity by monopolizing reef habitats, competing with native species, and directly overgrowing, and smothering reef corals. Several invasive macroalgae (*Eucheuma* clade E, *Kappaphycus* clade A and B, *Gracilaria salicornia*, and *Acanthophora spicifera*) are established within Kāne'ohe Bay (O'ahu, Hawai'i, USA), and reducing invasive macroalgae cover is a coral reef conservation and management priority. Invasive macroalgae control techniques, however, are limited and few successful large-scale applications exist. Therefore, a two-tiered invasive macroalgae control approach was designed, where first, divers manually remove invasive macroalgae (*Eucheuma* and *Kappaphycus*) aided by an underwater vacuum system ("The Super Sucker"). Second, hatchery-raised juvenile sea urchins (*Tripneustes gratilla*), were outplanted to graze and control invasive macroalgae regrowth. To test the effectiveness of this approach in a natural reef ecosystem, four discrete patch reefs with high invasive macroalgae cover (15–26%) were selected, and macroalgae removal plus urchin biocontrol (treatment reefs,  $n = 2$ ), or no treatment (control reefs,  $n = 2$ ), was applied at the patch reef-scale. In applying the invasive macroalgae treatment, the control effort manually removed ~19,000 kg of invasive macroalgae and ~99,000 juvenile sea urchins were outplanted across to two patch reefs, totaling ~24,000 m<sup>2</sup> of reef area. Changes in benthic cover were monitored over 2 years (five sampling periods) before-and-after the treatment was applied. Over the study period, removal and biocontrol reduced invasive macroalgae cover by 85% at treatment reefs. Our results show manual removal in combination with hatchery raised urchin biocontrol to be an effective management approach in controlling invasive macroalgae at reef-wide spatial scales and temporal scales of months to years.

Submitted 26 March 2018

Accepted 6 July 2018

Published 8 August 2018

Corresponding author

Brian J. Neilson,  
brian.j.neilson@hawaii.gov

Academic editor

James Reimer

Additional Information and  
Declarations can be found on  
page 19

DOI 10.7717/peerj.5332

© Copyright  
2018 Neilson et al.

Distributed under  
Creative Commons CC-BY 4.0

OPEN ACCESS

**Subjects** Conservation Biology, Ecology, Marine Biology, Zoology, Natural Resource Management

**Keywords** Invasive species, Biocontrol, Macroalgae, Kaneohe bay, *Kappaphycus*, *Eucheuma*, *Tripneustes*, *Gracilaria*, *Acanthophora*, Coral reef

## INTRODUCTION

Non-native macroalgae have been introduced worldwide (*Schaffelke, Smith & Hewitt, 2006*) as a result of spread through vectors including biofouling, ballast water, the aquarium trade, and seaweed mariculture (*Ruiz et al., 2000; Zemke-White & Smith, 2006;*

*Williams & Smith, 2007*). Commercial macroalgae production has increased considerably in the last 50 years, becoming a multi-billion dollar industry in over 150 countries (*FAO, 2015; Loureiro, Gachon & Rebours, 2015*). Macroalgae mariculture occurs throughout tropical regions often cultivating non-native or domesticated species of the genera *Caulerpa* spp., *Eucheuma* spp., *Gracilaria* spp., and *Kappaphycus* spp. (*Zemke-White & Smith, 2006; FAO, 2015; Radulovich et al., 2015*). The macroalgae industry can provide economic opportunities for coastal communities and can offer a viable alternative to fisheries-based economies (*Pickering & Forbes, 2002; Mate, Namudu & Lasi, 2003*). However, macroalgae production can have inadvertent consequences for tropical reef biodiversity (*Smith, Smith & Hunter, 2001; Stimson, Larned & Conklin, 2001; Ballesteros, 2006; Kružić, Žuljević & Nikolić, 2008; Longenecker, Bolick & Kawamoto, 2011; Martinez, Smith & Richmond, 2012; Sellers, Saltonstall & Davidson, 2015*), contributing to a suite of anthropogenic pressures that are driving the global decline of live coral (*Bruno & Selig, 2007; Gardner et al., 2003; Pandolfi et al., 2003; De'ath et al., 2012*). Following the 2014–2015 global coral bleaching events (*Van Hooidek, Maynard & Planes, 2013; Eakin et al., 2017; Hughes et al., 2017*) there is a need for immediate action to protect and restore coral reefs worldwide, including the management of invasive macroalgae on coral reefs.

Invasive macroalgae have the potential to negatively impact coral reefs by overgrowing reef building corals, outcompeting native species, and altering benthic habitat and the aquatic environment (i.e., chemistry, irradiance, sediment loading) (*Russell, 1983; Woo, 2000; Conklin & Smith, 2005; Chandrasekaran et al., 2008; Rasher & Hay, 2010; Martinez, Smith & Richmond, 2012; Davidson et al., 2015; Sellers, Saltonstall & Davidson, 2015; Murphy & Richmond, 2016*). Macroalgae contribute to ecosystem phase shifts from coral-dominated to macroalgae-dominated reefs (*Done, 1992; Mumby et al., 2015; Dell et al., 2016; Van de Leemput et al., 2016*). Such shifts to macroalgae dominance are generally associated with eutrophication, limited herbivory, or a combination of the two (*Smith et al., 1981; Lapointe, 1997; Larned, 1998; Smith, Smith & Hunter, 2001; Stimson, Larned & Conklin, 2001; Thacker, Ginsberg & Paul, 2001; Vermeij et al., 2009*). Phase shifts involving invasive macroalgae may pose additional competitive advantage over the native ecosystem. For instance, mariculture strains may have been selected for high growth and reproductive rates, vegetative propagation (*Naylor, Williams & Strong, 2001; Ask & Azanza, 2002; Zhang et al., 2007*), may be more tolerant of disturbed areas (*Byers, 2002; Ruiz et al., 1999*) and have limited preference by herbivores (*Nyberg & Wallentinus, 2005; Boudouresque et al., 1996; Schaffelke, Evers & Walhorn, 1995*). Considering the wide range of ecosystem services coral reefs provide (i.e., food security, tourism, shoreline protection, and cultural value) (*Moburg & Folke, 1999*), control and reduction of invasive macroalgae are a management priority for coral reef conservation.

Diverse techniques have been applied to eradicate or control marine macroalgae and include manual, chemical, and biological treatments (reviewed by *Anderson, 2007*). The type of technique applied depends on the management objective (i.e., eradication or control) and is often site and species specific (*Anderson, 2007*). Examples include chemical treatments (i.e., bleach, salt), thermal treatments (i.e., cold shock, heating), osmotic shock (i.e., freshwater and salinity treatments) (*Cheshire et al., 2002;*

Williams & Smith, 2004; Wotton & Hewitt, 2004; Glasby, Cresse & Gibson, 2005; Anderson, 2007), mechanical or manual removal by hand and/or aided by vacuum or dredge pumps (Curiel et al., 2001; Miller et al., 2004; Hewitt et al., 2005; Conklin, 2007; Marks, Reed & Obaza, 2017), light attenuation, containment barriers, and water-removal with *in situ* desiccation (Anderson, 2007).

Biocontrol of invasive macroalgae is a newly emerging and promising macroalgae control technique. For instance, experimental use of sea urchins and mollusks in controlling invasive macroalgae species such as *Caulerpa taxifolia*, *Caulerpa racemosa*, and *Codium fragile* has been evaluated in the Mediterranean and Atlantic (Boudouresque et al., 1996; Thibaut & Meinesz, 2000; Scheibling & Hatcher, 2007; Cebrian et al., 2009). These studies revealed successful biocontrol applications have the highest impact in areas of low infestation (Scheibling & Hatcher, 2007; Cebrian et al., 2009) and suggest invertebrate biocontrols are most effective for emerging populations of invasive macroalgae. In some cases, the effectiveness of these treatments has been limited by macroalgae toxicity to biocontrol agents (Boudouresque et al., 1996), as well as the speed and the ability to produce and deploy adequate densities of biocontrol grazers to affected areas (Thibaut & Meinesz, 2000). Macroalgae abatement from herbivore biocontrol has recently shown promise on Hawai'i's reefs. The short-spined sea urchin, *Tripneustes gratilla* (Linnaeus) is a generalist herbivore native to Hawai'i and will feed on at least five species of invasive macroalgae (Stimson, Cunha & Philippoff, 2007; Westbrook et al., 2015). *T. gratilla* has the potential for application as an invasive macroalgae biocontrol agent and has been shown to reduce macroalgae biomass within cage-enclosures *in situ* (Conklin & Smith, 2005; Stimson, Cunha & Philippoff, 2007; Chon, 2014; Westbrook et al., 2015). Moreover, *T. gratilla* has low mobility, can be easily handled, and maricultured from wild urchin stock and outplanted as juveniles (~2.5 cm test diameter). Finally, *T. gratilla* achieves its maximum growth rate within the first two-years of life, and test size can reach 5.6–8.3 cm while grazing on invasive macroalgae species (Pan, 2012).

Invasive macroalgae are prominent in the Hawaiian archipelago. As a result, a number of aforementioned macroalgae control techniques have been tested in Hawai'i (Smith et al., 2004; Conklin & Smith, 2005). Nineteen documented species of macroalgae have been introduced into Hawai'i since the 1950's, concentrated primarily on the island of O'ahu where the main shipping and military ports are located (Russell, 1992; Smith, Hunter & Smith, 2002; DLNR, 2013). Several Rhodophyta macroalgae species have been particularly successful at invading Hawaiian reef communities, including *Euclima* clade E (N.L. Burman) F.S. Collins & Hervey, and *Kappaphycus* clade A and clade B (Doty) Doty ex P.C. Silva (Conklin, Kurihara & Shirwood, 2009), *Acanthophora spicifera* (Vahl) Børgesen, and *Gracilaria salicornia* (C. Agardh) E.Y. Dawson. The introduction of these macroalgae to Hawai'i in the mid-20th century occurred through a variety of pathways including ship biofouling, ballast water discharge, and mariculture experimentation and production (Doty, 1961; Russell, 1983; Russell, 1992; Smith, Hunter & Smith, 2002).

Three Euclimoid species of the genus *Kappaphycus* and *Euclima* from the Philippines, were intentionally planted on reefs around Moku o Lo'e Island (Coconut Island) at the Hawai'i Institute of Marine Biology (HIMB) (Kāne'ohe Bay, Hawai'i) for

experimentation in the 1970's (Doty, 1977; Russell, 1983). Molecular techniques (Zuccarello, Smith & West, 2006; Conklin, Kurihara & Shirwood, 2009) have identified these species as *Kappaphycus* clade A, *Kappaphycus* clade B, and *Eucheuma* clade E (hereafter *Eucheuma*). Prior to this analysis, nomenclature for these species has been inconsistent; therefore, we will refer to this group collectively as *E/K* hereafter unless referring specifically to species. *E/K* was left unchecked in Kāneʻohe Bay for over two decades, and by 1996, *E/K* had spread >5 km from Moku o Loʻe Island and were found throughout Kāneʻohe Bay (Rodgers & Cox, 1999) and continued to spread to previously unaffected northern reefs adjacent to Kāneʻohe by 1999 (Conklin & Smith, 2005). *Eucheuma* and *Kappaphycus* clade A are thought to spread only through vegetative propagation and their distribution has been restricted to Kāneʻohe Bay, whereas *Kappaphycus* clade B is able to disperse vegetatively and sexually and has been documented outside of Kāneʻohe Bay (Conklin, Kurihara & Shirwood, 2009). *A. spicifera*, the most widely distributed non-native macroalgae in Hawaiʻi (Smith, Hunter & Smith, 2002), is thought to have been introduced and spread via ship biofouling or ballast water (Doty, 1961; Russell, 1983) or possibly through aquarium imports (Russell, 1992). *A. spicifera* is a common fouling species on ship hulls and is able to disperse sexually and via vegetative fragmentation, which may explain its wide distribution (Smith, Hunter & Smith, 2002). The origin of *G. salicornia* are speculative, possibly arriving to Hilo Bay in the 1940's associated with ships originating from the Philippines (Smith et al., 2004) and then later intentionally transplanted to various sites around Molokaʻi and Oʻahu, including Kāneʻohe Bay (Russell, 1992; Smith, Hunter & Smith, 2002; Smith et al., 2004). *G. salicornia* is thought to disperse primarily via vegetative fragmentation (Smith et al., 2004).

All five species are capable of forming dense mats on the reef, overgrowing reef corals, and monopolizing reef habitats (Russell, 1983; Ask & Azanza, 2002; Conklin & Smith, 2005; Martinez, Smith & Richmond, 2012). *E/K* has been shown to be particularly damaging to corals by shading and smothering live coral and can eventually lead to mortality (Russell, 1983; Woo, 2000; Conklin & Smith, 2005; Chandrasekaran et al., 2008). *G. salicornia* can also impact reef corals by decreasing irradiance via smothering, altering water chemistry (i.e., hypoxia and hypercapnia) and increasing sedimentation surrounding reef corals (Martinez, Smith & Richmond, 2012). Although five of these invasive macroalgae species are thought to be damaging to reef biodiversity, *E/K* were deemed a management priority due to its especially damaging impacts to corals and its limited distribution compared to *A. spicifera* and *G. salicornia* (DLNR, 2013).

In response to the destructive impact to corals and the concern that *E/K* would continue to spread and establish on reefs beyond Kāneʻohe Bay, local managers, community members, and researchers worked to develop a control technique for invasive macroalgae with particular focus on *E/K*. Conklin & Smith (2005) tested various control methods and found that *E/K* quickly regrew after manual removal, but sea urchin biocontrol showed a sustained reduction of *E/K* in small-scale field trials. Conklin & Smith (2005) recommended combining techniques by using manual removal to reduce the bulk of *E/K* biomass, followed by sea urchins biocontrol treatment to reduce re-growth. Preliminary field trials conducted by Hawaiʻi Department of Land and Natural Resources on a patch reef in Kāneʻohe Bay supported this observation (DLNR, 2013). Based on these findings

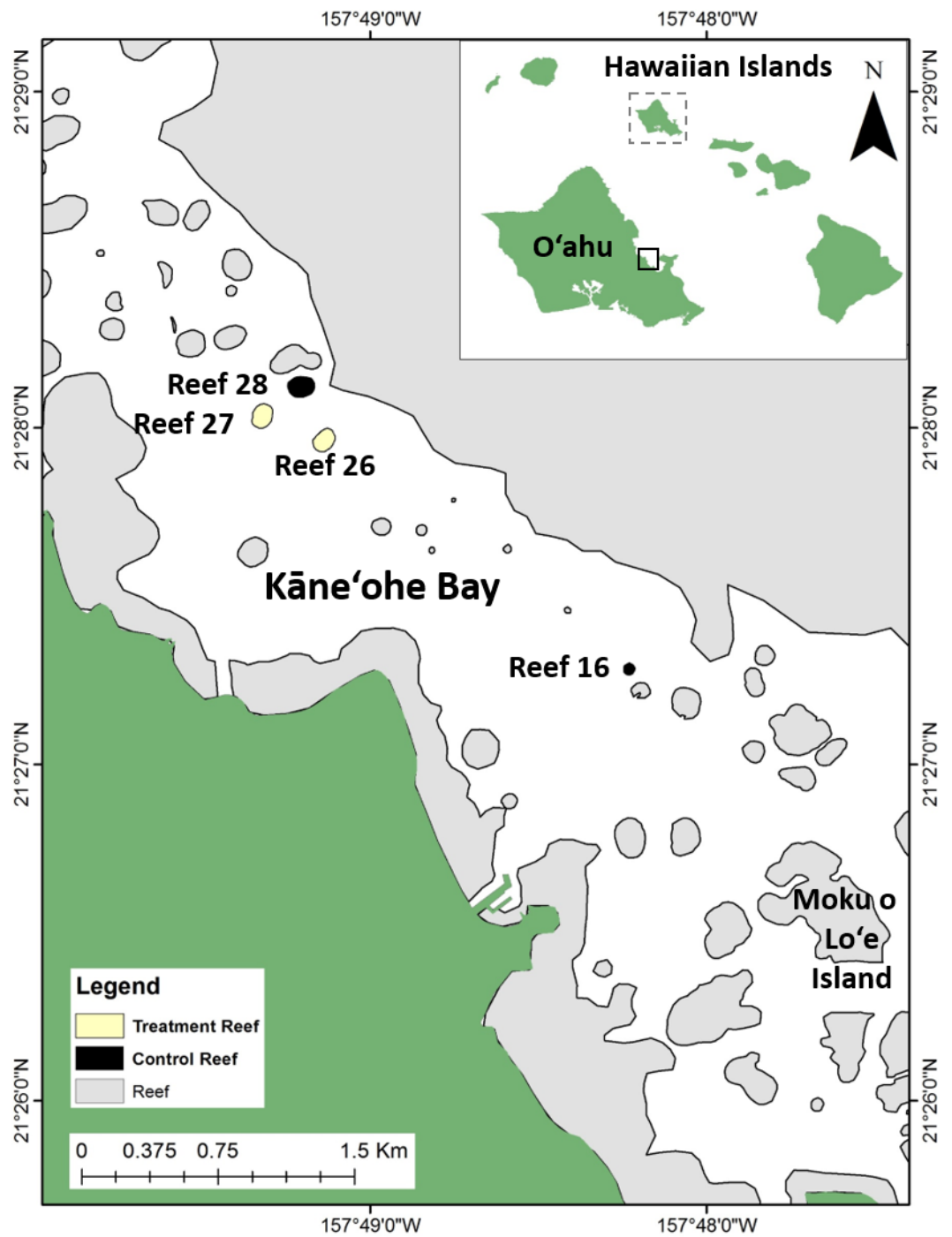
and recommendations, a large-scale invasive macroalgae control project on patch reefs in Kāneʻohe Bay was initiated in 2008 using the combination of manual removal and sea urchin biocontrol.

The overarching goal of the project was the rehabilitation and preservation of coral reef habitat and associated biodiversity with specific management objectives to: (i) reduce invasive macroalgae on Kāneʻohe Bay patch reefs, and (ii) stop the spread of *E/K* to unaffected reefs within and outside Kāneʻohe Bay. Although the macroalgae control techniques applied in this study were evaluated previously in small-scale experiments, the combined use of manual removal and sea urchin biocontrol has yet to be tested as a management-relevant, reef-wide scale approach. In this study we evaluate the effectiveness of manual removal combined with urchin biocontrol in sustaining a reduced invasive macroalgae cover (*E/K* (i.e., *Euclima*, *Kappaphycus* clade A, *Kappaphycus* clade B), *G. salicornia*, *A. spicifera*) at a reef-wide scale over 2 years using a Before After Control Impact (BACI) experimental design. We hypothesized that our proposed invasive macroalgae removal and control methods would be effective at maintaining low invasive macroalgae abundance (percent cover) over time at treatment reefs relative to untreated-control reefs. While, a factorial design testing each treatment type separately (i.e., manual removal, biocontrol, and combined treatments) might be preferred, this, was not possible due to logistic and financial challenges associated with implementing and replicating three separate treatment types at the reef-wide scale. However, previous findings of [Conklin & Smith \(2005\)](#) and data from the State of Hawaiʻi Division of Aquatic Resources at a scale smaller than the one applied in the current study showed manual removal of invasive algae in the absence of biocontrol cannot successfully reduce invasive macroalgae cover over long term. Simply applying urchin biocontrol without manual removal was also not advised based on concerns of increased fragmentation by urchins detaching holdfasts of large *E/K* mats. In addition, applying urchins to a large standing crop of macroalgae would increase the amount of urchins, grazing time, and ultimate cost required to successfully treat a reef. Therefore, our goal was to use a single, most-effective treatment type (i.e., the combination of manual removal and biocontrol) and test whether this treatment was effective at reducing invasive algae cover long term among replicate patch reefs.

## MATERIALS AND METHODS

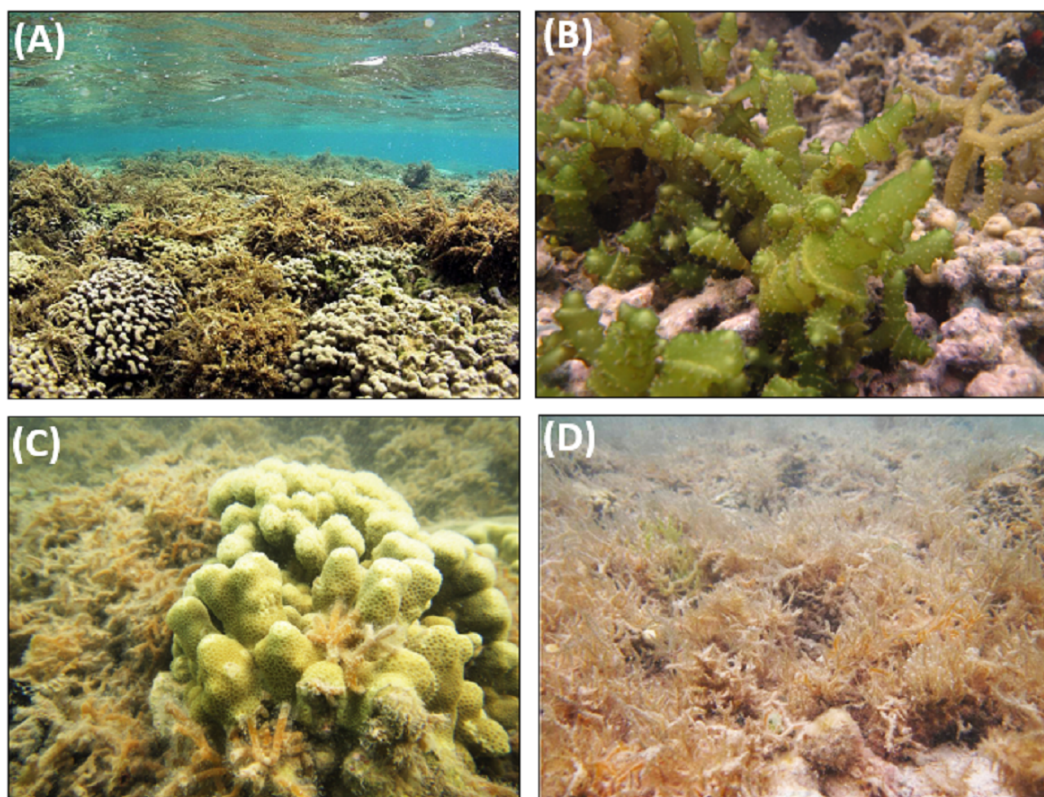
### Study site

Invasive macroalgae removal and biocontrol techniques were carried out on four shallow (0.5–2.0 m depth) patch reefs located in central Kāneʻohe Bay, on the windward side of Oʻahu, Hawaiʻi (21°28′0″N, 157°49′0″W), which is the largest embayment in the Hawaiian Islands and contains over 70 distinct patch reefs surrounded by a barrier reef and fringing reef system ([Fig. 1](#)). The patch reefs are island-like features separated by 10–15 m sand bottom. Two patch reefs (Reef 26 and 27) were designated as treatment reefs, where manual removal of *E/K* and sea urchin biocontrol were applied, and two patch reefs (Reef 16 and 28) were designated as control reefs where no macroalgae manual removal or biocontrol were applied ([Fig. 1](#)). Study reefs were selected based on the presence of



**Figure 1** Study site location in Kāneʻohe Bay on the windward side of the island of Oʻahu, Hawaiʻi, proximate to Moku o Loʻe (Hawaiʻi Institute of Marine Biology). Baseline image provided by ©DigitalGlobe, Inc., All Rights Reserved.

Full-size  DOI: [10.7717/peerj.5332/fig-1](https://doi.org/10.7717/peerj.5332/fig-1)



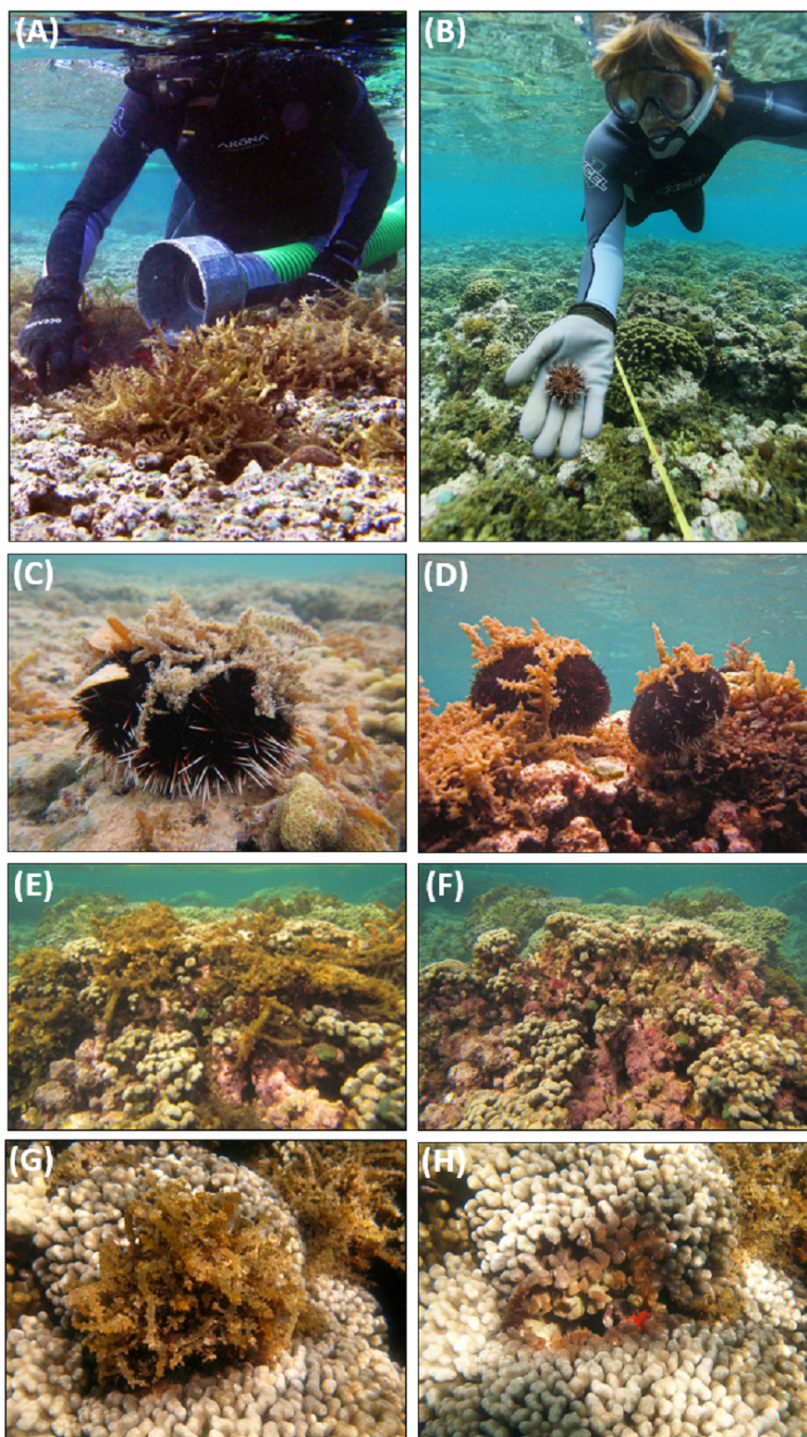
**Figure 2** Invasive macroalgae species found on study reefs in Kāneʻohe Bay. (A) *Eucheuma* clade E, (B) *Kappaphycus* clade B, (C) *G. salicornia*, (D) *A. spicifera* (photo credit: Brian Neilson).

Full-size  DOI: [10.7717/peerj.5332/fig-2](https://doi.org/10.7717/peerj.5332/fig-2)

invasive macroalgae and their close proximity to each other. Designated patch reefs were approximately 11,900 m<sup>2</sup> (treatment Reef 26), 12,700 m<sup>2</sup> (treatment Reef 27), 3,100 m<sup>2</sup> (control Reef 16), and 14,500 m<sup>2</sup> (control Reef 28). Each patch reef has a distinct reef slope composed primarily of live coral and a shallower reef flat consisting of a mix of live coral, dead coral, rubble, and sand. *E/K* occurred on reef slopes and reef flats and ranged in size from single low growing thalli to dense mats 1 m<sup>2</sup> in area and ~0.3 m thick (Figs. 2A–2B). *G. salicornia* and *A. spicifera* occurred primarily on the reef flats and also ranged from single thalli to mats >1 m<sup>2</sup> and ~0.1 m thick (Figs. 2C–2D).

### Invasive macroalgae control technique

Invasive macroalgae were controlled in two phases. First, *E/K* were manually removed from reefs by divers aided by an underwater vacuum system (“The Super Sucker”) that transported macroalgae from the reef to a support vessel (Fig. 3A) (Conklin, 2007). To a lesser extent, divers manually removed and bagged macroalgae without aid of the Super Sucker system. At the support vessel, macroalgae was bagged, weighed (wet weight to the nearest kg), and then delivered to farmers in the Kāneʻohe Bay watershed for use as an agricultural fertilizer. Manual removal was conducted from November 2011 to March 2012 on treatment Reef 26 over 23 working days and treatment Reef 27 was cleared from



**Figure 3** Invasive macroalgae control techniques applied in the field. (A) using the Super Sucker to manually remove *Eucheuma* clade E, (B) outplanting juvenile *T. gratilla*, (C) outplanted adult *T. gratilla* surrounded by *G. salicornia* and *A. spicifera*, (D) adult *T. gratilla* surrounded by *Eucheuma* clade E, (E) before and immediately (F) after manual removal of *Eucheuma* clade E revealing crustose coralline algae (CCA) and (G) before and (H) after removal of *Eucheuma* clade E revealing live and dead coral (photo credit: (A–B) DLNR/DAR, (C–H) Brian Neilson).

Full-size  DOI: [10.7717/peerj.5332/fig-3](https://doi.org/10.7717/peerj.5332/fig-3)



**Table 1** Invasive macroalgae manual removal and *T. gratilla* outplanting dates, area, and stocking density.

Treatment reef	Manual removal dates	Manual removal days	E/K removed (kg)	Urchin outplanting dates	Urchin outplanting area (m <sup>2</sup> )	Urchins stocked	Urchin stocking density (urchins m <sup>-2</sup> )
Reef 26	Nov 2011–Mar 2012	23	11,963	Dec 2011–Dec 2013	11,900	46,913	3.94
Reef 27	Mar 2012–Aug-2012	25	7,095	Aug 2012–Dec 2013	12,700	52,835	4.16
Total	Nov 2011–Aug-2012	48	19,058	Dec 2011–Dec 2013	24,600	99,748	4.05

March 2012 to August 2012 over 25 working days (Table 1). Divers removed the bulk of the *E/K* biomass, leaving macroalgae in hard-to-reach areas (e.g., between coral branches and within crevices), small clumps (<400 cm<sup>3</sup>) and holdfasts to maximize the yield to effort ratio and minimize disturbance to other benthic organisms and habitats. Invasive macroalgae species *G. salicornia* and *A. spicifera* were not directly targeted by divers for manual removal.

### Sea urchin biocontrol

Adult *T. gratilla* were collected from the wild and spawned at an urchin hatchery. Urchin larvae were settled and reared in tanks on land until they reached approximately 2.5 cm diameter test size (~4–6 months after spawning). A new cohort was produced every 30–60 days throughout the duration of the study. Following *E/K* manual removal, juvenile urchins were transported to the reef in trays and manually deployed on the treatment reefs where *G. salicornia*, *A. spicifera*, and *E/K* occurred (Figs. 3B–3D). A systematic approach was used to deploy urchins to achieve a relatively consistent urchin density throughout the entire reef. Urchins were deployed to the reef as they became available by the hatchery, requiring repeated stocking events to treat each reef. Additional urchins were spot-treated to areas that remained high in invasive macroalgae cover and/or void of urchins as a result of attrition or being inadvertently missed during the initial deployments. Hatchery related biosecurity protocols were followed to prevent the spread of disease and invasive species, and urchins were closely monitored for signs of disease or abnormalities.

On treatment Reef 26, a total of 46,913 *T. gratilla* were outplanted to affected areas, the majority of which (76% of total) were outplanted from December 2011 to October 2012, with supplemental outplanting from July to December 2013 (19%) one additional outplanting in July of 2014 (13% and 5% of total, respectively) (Table 1). On treatment Reef 27, a total of 52,253 urchins were outplanted (Table 1), primarily from August 2012 to May 2013 (97% of total) with one additional supplemental stocking (1,500 urchins) in December 2013. Stocking density of juvenile urchins was 3.9 urchins m<sup>-2</sup> on treatment Reef 26 and 4.2 urchins m<sup>-2</sup> on treatment Reef 27 (Table 1).

### Invasive macroalgae control costs

Control costs were calculated for field operations (i.e., manual removal and sea urchin outplanting) and sea urchin hatchery operations. Cost estimates included salaries and operating expenses (i.e., equipment, materials, supplies, fuel, and utilities). The total invasive macroalgae control cost of the project was divided by the total reef area treated to estimate cost per square meter.

## Benthic surveys

Baseline benthic surveys were performed at all patch reefs from November 2011 to February 2012 (hereafter, Winter 2011) prior to macroalgal removal and urchin outplanting, representing the “before” period of the analysis. Subsequently, benthic surveys were repeated during the treatment period at four additional times during summer and winter seasons from 2012–2014, representing the “after” periods of the analysis. Sampling periods were defined as: May–June 2012 (hereafter, Summer 2012), December 2012–February 2013 (hereafter, Winter 2012), May–June 2013 (hereafter, Summer 2013), and February 2014 (hereafter, Winter 2013). Using these five time points we analyzed changes in percent cover of invasive macroalgae (*Eucheuma*, *Kappaphycus* clade B, *G. salicornia*, *A. spicifera*), native macroalgae, coral, crustose coralline algae (CCA), and the combined sand/rubble, bare space, turf (thallus length  $\leq 10$  mm) (SBT) at treatment and control reefs.

Fixed transect locations were randomly selected initially using ArcGIS random point tool (ESRI, 2011) within the following strata: windward and leeward prevailing wind orientation (northeast) and habitat type (aggregate reef, mixed/unconsolidated reef, and pavement/consolidated reef situated on reef flat and reef slope areas). A windward/leeward stratification was applied to control for the possibility of detached algae collecting disproportionately on the leeward side of reefs as a result of wind driven currents. Reef flat transects ran perpendicular to the prevailing wind direction at a bearing of  $\sim 140^\circ$ . Reef slope transects followed the  $\sim 1$  m depth contour clockwise around the reef. The number of transects per reef varied according to reef size at an average sampling effort of one transect per  $\sim 800$  m<sup>2</sup>. The total fixed transects for each reef were: 6 (control Reef 16), 18 (control Reef 28), 13 (treatment Reef 26), and 14 (treatment Reef 27). The number of transects were allocated in proportion to the total reef area first, then by primary reef habitats (aggregate and non-aggregate), then by non-aggregate sub-strata (mixed/unconsolidated reef and pavement/consolidated reef). Mean benthic cover was estimated using a point intercept transect method (Hill & Wilkinson, 2004). Surveyors recorded the benthic cover at 0.2 m intervals along a 25 m transect ( $n = 126$  points transect<sup>-1</sup>). *T. gratilla* were surveyed at each transect location, counting all observed individuals within a  $25 \times 1$  m belt. A correction factor of 90% detectability (based on F Mancini and D Minton field trials) was used to estimate the density of urchins from transect counts.

## Data analysis

Response variables (percent cover of invasive macroalgae, native macroalgae, CCA, coral and SBT) were monitored over time, with baseline surveys at each patch reef (Winter 2011) designated as the “before” period and four subsequent surveys (Summer 2012, Winter 2012, Summer 2013, Winter 2013) designated as “after” periods. Treatment application (i.e., algae removal plus urchin outplanting) was partial in Summer 2012 and complete by Winter 2012 (Table 1). Changes in community cover were assessed using a linear mixed effects model fit by restricted maximum likelihood in the *lme4* package (Bates et al., 2015) in R version 3.3.0 (R Development Core Team, 2017). Treatment (E/K manual removal and biocontrol vs. no E/K removal or biocontrol) and time (before treatment applied vs. periods after treatment applied) were included as fixed effects. To account for spatial structure of

the benthos habitat types within patch reefs (i.e., aggregate reef, mixed/unconsolidated reef, and pavement/consolidated reef) habitat was designated as a random effect nested within individual reefs. Reef transects were included as a repeated-measure random effect. Considering that surveys conducted over the two-year study period spanning different months and seasons, we first tested ‘season’ (i.e., summer *vs.* winter) separately as a fixed effect in a linear model; no effects were observed ( $p \geq 0.408$ ) and season was not included in the final analysis. Normality of residuals and homogeneity of variance was verified using graphical inspection of standardized residuals, and transformations were applied where assumptions of ANOVA were not met. An arcsine transformation was used for invasive algae and abiotic cover and a square root transformation was used for CCA and native macroalgae. Analysis of variance tables were generated using type-II sum of squares with Satterthwaite approximations of degrees of freedom using the package *lmerTest* (Kuznetsova, Brockhoff & Christensen, 2017). Where significant interactions were found, posthoc slice tests were performed using *lsmeans* (Lenth, 2016) to evaluate differences between control and treatment reefs within each sampling time point. All data and code to reproduce figures and analyses can be found on Zenodo ([10.5281/zenodo.1285551](https://doi.org/10.5281/zenodo.1285551)).

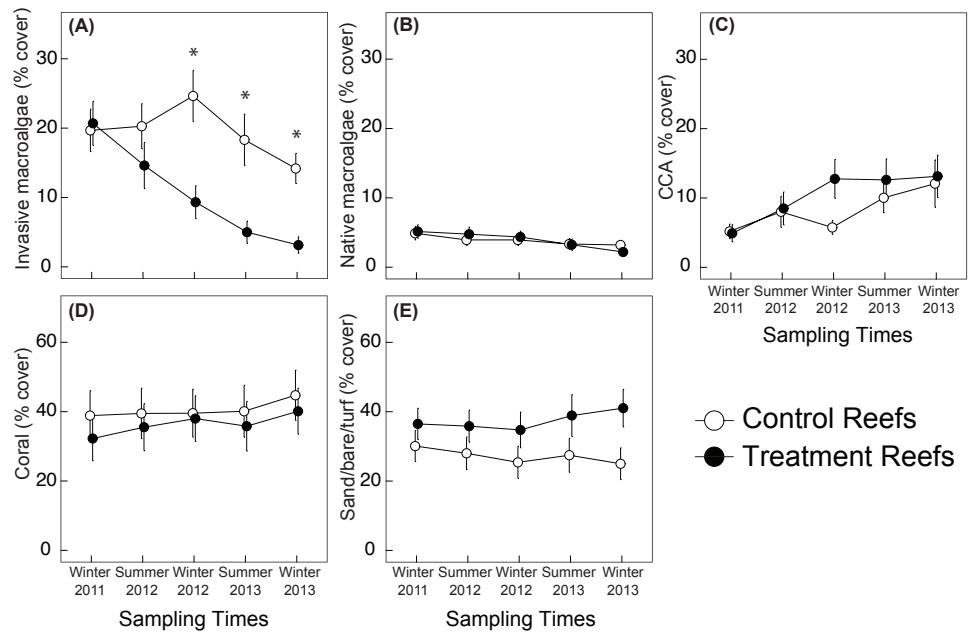
## RESULTS

### Initial field surveys

Mean benthic cover was comparable for all groups (i.e., invasive and native algae, coral, CCA, bare substrate) (*posthoc*:  $p \geq 0.721$ ) at treatment and control reefs at the start of the study (Figs. 4A–4E). In Winter 2011, benthic cover at the four study reefs was, on average, dominated by hard corals (mean  $\pm$  SE) ( $39 \pm 13\%$ ), followed by invasive macroalgae ( $21 \pm 5\%$ ), CCA ( $5 \pm 2\%$ ), and native macroalgae ( $5 \pm 2\%$ ). The native macroalgae community cover was composed primarily of *Dictyosphaeria versusii* (74%) and *Dictyosphaeria cavernosa* (19%). Invasive macroalgae on control reefs was predominantly *G. salicornia* (11%), and *Eucheuma* (7%), whereas invasive macroalgae cover at treatment reefs had similar cover of *G. salicornia*, *A. spicifera*, and *Eucheuma* (5–7%) (Figs. 5A–5B). *Kappaphycus* clade B made up the smallest component of the invasive macroalgae community (0–2.5%) on all study reefs (Figs. 5A–5B). *T. gratilla* was not detected on control or treatment reefs in the pre-treatment surveys.

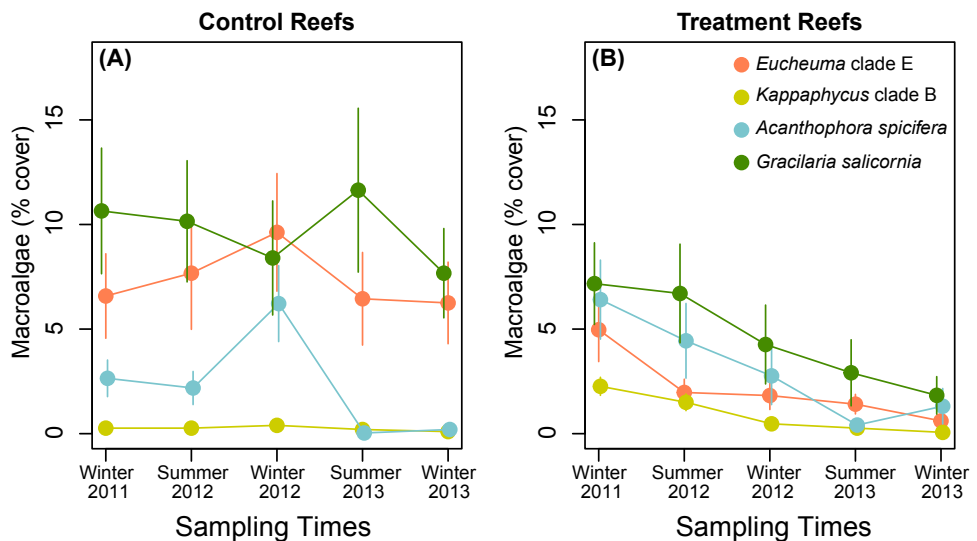
### Macroalgae removal and urchin outplanting surveys

Divers removed a total of 11,963 kg wet weight ( $0.81 \pm 0.14 \text{ kg m}^{-2}$ ) of *E/K* from different areas of treatment Reef 26 and 7,095 kg wet weight ( $0.622 \pm 0.05 \text{ kg m}^{-2}$ ) from treatment Reef 27 (Table 1). The majority of macroalgae was removed using the Super Sucker (80%) versus hand removal using bags (20%). *E/K* was cleared at an average rate of  $1.48 \pm 0.14 \text{ m}^2 \text{ min}^{-1}$ . On treatment reefs, the mean ( $\pm$ SE) removal effort was greater for Reef 26 ( $2.36 \pm 0.27 \text{ m}^2 \text{ min}^{-1}$ ) compared to treatment Reef 27 ( $1.23 \pm 0.10 \text{ m}^2 \text{ min}^{-1}$ ) as well as the *E/K* biomass removed  $0.81 \pm 0.14 \text{ kg m}^{-2}$  (Reef 26) versus  $0.62 \pm 0.05 \text{ kg m}^{-2}$  (Reef 27). While stocking density of juvenile urchins was designed to be  $\sim 4$  urchins  $\text{m}^{-2}$  (Table 1), field surveys following urchin outplanting estimated urchin densities was  $0.90$  urchins  $\text{m}^{-2}$  (treatment Reef 26) and  $0.74$  urchins  $\text{m}^{-2}$  (treatment Reef 27). No



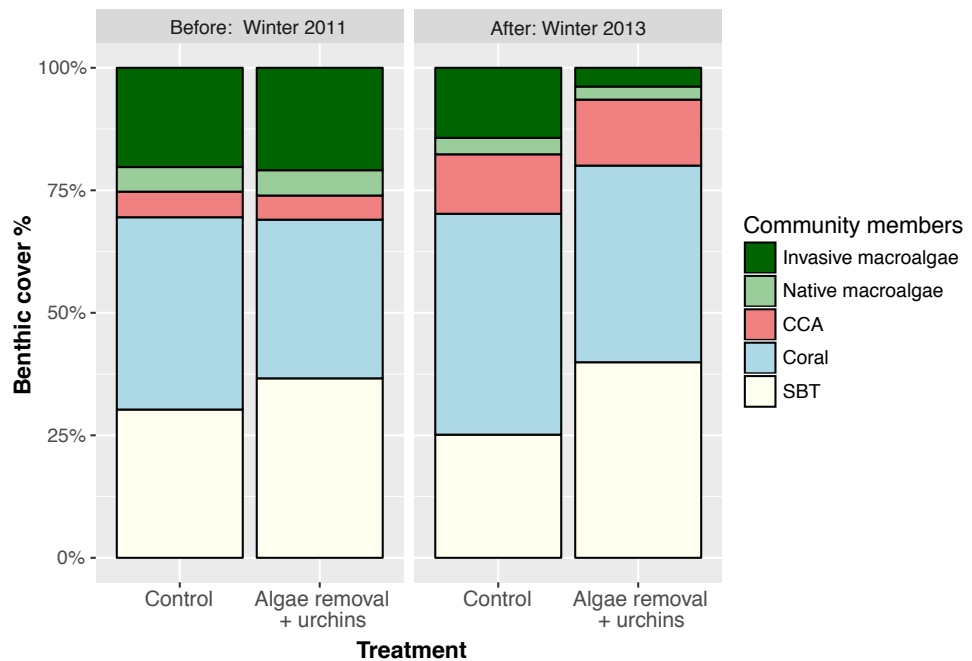
**Figure 4** Mean percent cover of benthic cover types. (A) combined invasive macroalgae (*Eucheuma* clade E/*Kappaphycus* Clade B/*Acanthophora spicifera*/*Gracilaria salicornia*), (B) native macroalgae, (C) crustose coralline algae (CCA), (D) corals, and (E) SBT (sand/bare/turf). Values are mean  $\pm$  SE;  $n = 24$  (control) and  $n = 26-27$  (treatment) for each sampling time. The first time point in each figure (Winter 2011) represents the “before” time period of the study and all subsequent time points represent the “after” period. Symbols (\*) represent a significant difference ( $p \leq 0.05$ ) between the control and treatment.

Full-size [DOI: 10.7717/peerj.5332/fig-4](https://doi.org/10.7717/peerj.5332/fig-4)



**Figure 5** Percent cover for invasive macroalgae species through time. (A) control reefs and (B) treatment reefs. Values are mean  $\pm$  SE;  $n = 24$  (control reefs) and  $n = 26-27$  (treatment reefs) for each sampling time.

Full-size [DOI: 10.7717/peerj.5332/fig-5](https://doi.org/10.7717/peerj.5332/fig-5)



**Figure 6** Mean percent cover for benthic community members at control and treatment reefs before applying treatments (Winter 2011) and two years after treatment application (Winter 2013). Values are mean  $\pm$  SE;  $n = 24$  (control) and  $n = 26$ – $27$  (treatment) for each sampling time.

Full-size DOI: [10.7717/peerj.5332/fig-6](https://doi.org/10.7717/peerj.5332/fig-6)

presence of *T. gratilla* was reported in benthic surveys on control Reefs 16 and 28 in post treatment surveys.

### Post-macroalgae removal and urchin outplanting surveys

*E/K* macroalgae manual removal and urchin biocontrol led to an 85% decline in invasive macroalgae cover over the study period, from 21% cover in Winter 2011 to 4% cover in Winter 2013 (Figs. 4A, 5B, 6). Invasive macroalgae cover was affected by the interaction between treatment and time (Table 2). On treatment reefs, percent cover of *Eucheuma*—a target of manual macroalgae removal—had declined by 59% at the first sampling time (Summer 2012), approximately 6 months after the treatment had been applied (Fig. 5B). However, total invasive macroalgae cover on treatment reefs did not significantly differ from control reefs until one year after the treatment application had begun (*posthoc*:  $p = 0.029$ ). By Winter 2012 total invasive macroalgae cover had declined by 29% relative to Winter 2011 levels. The mean invasive macroalgae cover at control reefs fluctuated between 14–25% over the entire study period (Winter 2011 to Winter 2013) (Figs. 4A, 6) and comparable across all time points, (*posthoc*:  $p \geq 0.080$ ) except Winter 2013 where invasive algae declined relative to start of the study (*posthoc*:  $p = 0.005$ ). *G. salicornia* and *Eucheuma* consistently dominated the invasive macroalgae community at control reefs (Fig. 5A), representing mean cover of 7–12% at each sampling time throughout the study period.

**Table 2** Analysis of variance table for treatment and time effects on coral reef community cover.

Dependent variable	Effect	SS	df	F	p
Invasive macroalgae	Treatment	0.031	1, 9	3.377	0.098
	Time	1.478	4, 195	40.389	<0.001
	Treatment × Time	0.629	4, 195	17.202	<0.001
Native macroalgae	Treatment	0.0005	1, 9	0.015	0.906
	Time	0.120	4, 195	8.841	<0.001
	Treatment × Time	0.026	4, 195	1.928	0.107
CCA	Treatment	0.0005	1, 9	0.045	0.837
	Time	0.366	4, 195	9.194	<0.001
	Treatment × Time	0.104	4, 195	2.606	<b>0.037</b>
Coral	Treatment	0.0001	1, 9	0.056	0.818
	Time	0.181	4, 195	34.783	<0.001
	Treatment × Time	0.020	4, 195	3.867	<b>0.005</b>
Sand/bare/turf	Treatment	0.007	1, 9	0.520	0.489
	Time	0.072	4, 195	1.344	0.255
	Treatment × Time	0.048	4, 195	0.893	0.469

**Notes.**

Linear mixed effect models fit by restricted maximum likelihood; analysis of variance table of Type II sum of squares and Satterthwaite approximation for degrees of freedom.

Invasive macroalgae, *Eucheuma denticulatum*, *Kappaphycus alvarezii*, *Acanthophora spicifera*, *Gracilaria salicornia*; CCA, crustose coralline algae; SS, sum of squares; df, degrees of freedom in numerator and denominator.

Bold p values represent significant effects ( $p < 0.05$ ).

Mean native macroalgae percent cover ranged from 2–5% over the study period and decreased over time ( $p < 0.001$ ) but not in response to treatments ( $p = 0.906$ ) (Table 2) (Fig. 4B). The interaction of treatment × time affected coral ( $p < 0.001$ ) and CCA cover ( $p = 0.037$ ), and both coral and CCA increased over the study period ( $p < 0.001$ ). However, mean coral and CCA cover did not differ among control and treatment reefs at each discrete time point (*posthoc*:  $p \geq 0.286$ ). SBT (sand/bare/turf) was not affected by time, treatment, or their interaction ( $p \geq 0.255$ ) (Table 2), but tended to be lower at control reefs (25–30% cover) relative to treatment reefs (35–40% cover) (Fig. 4E).

### Invasive macroalgae control costs

Field components of macroalgae removal and control operations cost an estimated \$255,000 and roughly 3,000 human hours of work. Hatchery operations cost \$562,000, and accounted for approximately 19,000 human hours to run the hatchery facility, which required daily oversight. The total project cost \$817,000 to treat 24,600 km<sup>2</sup> (\$33 m<sup>-2</sup>) of affected reef.

## DISCUSSION

### Effectiveness of invasive macroalgae control

For invasive macroalgae control, there are few demonstrated techniques available for managers when prevention and eradication attempts have failed and valuable resources and biodiversity are at risk (Anderson, 2007). Further, there are few examples of macroalgae

control techniques being successfully applied beyond small-scale experiments. The present study demonstrates manual removal of invasive macroalgae, in combination with outplanting hatchery raised juvenile urchins (*T. gratilla*) for biocontrol, can be an effective approach for reducing the benthic cover of invasive macroalgae at a reef-wide scale. Invasive macroalgae was reduced by 85%, two-years after macroalgae removal and sea urchin biocontrol was applied—a result consistent with a small-scale experiment that employed a similar control technique over a shorter time period (Conklin & Smith, 2005).

The treatments applied in this study showed promising results in controlling invasive macroalgae. Manual removal aided by the Super Sucker system was an effective means to remove *E/K* biomass (51% decline post manual removal) and was also an efficient means of moving thousands of kilograms of macroalgae from the reef to the support vessel at a mean removal rate of  $1.48 \pm 0.14 \text{ m}^2 \text{ min}^{-1}$ . In addition, the vacuum system captured loose macroalgae fragments created by dislodging the macroalgae, reducing the risk of unintentional dispersal. Following manual removal, invasive macroalgae continued to decline by 61% from Winter 2012 to Winter 2013 (Fig. 4A). Although individual treatment types were not tested here, we speculate that this decline was a result of *T. gratilla* biocontrol based on the findings of Conklin & Smith (2005), which documented steady re-growth of *E/K* without *T. gratilla* biocontrol. It should be noted that manual removal and sea urchin biocontrol manipulations deployed in this study took several months to carry-out (Table 1) and supplemental urchins were added to reefs throughout the study to account for attrition. Therefore, the first “after period” (i.e., Summer 2012) may be viewed as a transitional period in the chronology of our experiment, bridging pre-manipulation and full treatment establishment periods.

Assessing invasive algae mitigation at reef-wide scales has a strong and direct application to management, however, such studies also present challenges in terms of replication and sample size. Alternatively, studies conducted at smaller spatial scales (i.e., plot-level) offer greater replication, but results may not necessarily be extrapolated to larger scales. In regards to this study, treatments were not fully crossed and replication was low, however, our method are promising, especially in demonstrating the potential for a native, mobile invertebrate as an effective biocontrol agent. Despite shortcomings, our results show a clear and lasting results of reduced invasive macroalgae on treatment reefs, indicating our approach was successful and effective in controlling invasive macroalgae over 24,600 km<sup>2</sup> of coral reef habitat

The sea urchin, *T. gratilla*, are well suited for mariculture and outplanting for the biocontrol of invasive macroalgae. *T. gratilla* are able to be propagated in a hatchery using wild stock, producing large numbers of juvenile urchins ( $\sim 100,000 \text{ yr}^{-1}$ ) (DL Cohen, pers. comm., 2017) without impacting wild *T. gratilla* populations. The small size ( $\sim 2.5 \text{ cm}$  test diameter) of outplanted *T. gratilla* may also be an important factor in treating invasive macroalgae. Chon (2014) found small urchins (0.5–2.5 cm test diameter) were more effective at grazing invasive macroalgae than adult *T. gratilla* ( $\sim 4 \text{ cm}$  test diameter) within *in situ* enclosures. Thus, small test-size urchins appear more capable of grazing holdfasts within the small interstitial spaces of the reef. As juvenile urchins mature, they continue to contribute to invasive macroalgae biocontrol (Chon, 2014; Westbrook et al., 2015),

but possibly to a lesser extent. Therefore, the potential for *T. gratilla* as a biocontrol agent may be size-dependent (Chon, 2014).

While the primary target species for manual removal was *E/K*, other invasive macroalgae not targeted by manual removal (*G. salicornia* and *A. spicifera*) also declined over the study period (Fig. 5B). Potentially, the reductions in *G. salicornia* and *A. spicifera* cover at treatment reefs are due to urchin herbivory reducing the cover of these non-targeted (for manual removal) invasive macroalgae. In feeding trials, *T. gratilla* consumed all four species of invasive macroalgae found in this study, but given the choice, urchins preferred *A. spicifera*, especially among smaller test-size urchins (Westbrook et al., 2015). *T. gratilla* will also graze *G. salicornia*, but displays the least preference for this species (Stimson, Cunha & Philippoff, 2007; Westbrook et al., 2015). Further, Westbrook et al. (2015) found that *T. gratilla* were able to graze invasive macroalgae at a rate of 7.5 g d<sup>-1</sup> per urchin, which they estimated to be roughly equal to the growth rate of the four species of invasive macroalgae examined.

This study demonstrates that *T. gratilla* biocontrol can be successful when applied at the scale of a patch reef (~12,000 m<sup>2</sup>). However, since urchin movement was naturally confined by 10–15 m deep sandy habitats surrounding patch reefs in Kāneʻohe Bay, this raises the question as to whether *T. gratilla* would be as effective in treating larger continuous reefs. Valentine & Edgar (2010) detected a significant decline of macroalgae on continuous reef habitats when *T. gratilla* are present in high densities (>4 m<sup>-2</sup>) at Lord Howe Island. Stimson, Larned & Conklin (2001) found *T. gratilla* movement to be <1 m d<sup>-1</sup> and suggested that this low vagility may explain its generalist diet of a wide range of macroalgae species including non-natives. The low movement rates have allowed Hawaiʻi managers to utilize *T. gratilla* in spot-treating areas with high invasive macroalgae biomass and apply a manipulated urchin density in problematic locales. Therefore, *T. gratilla* shows promise as a macroalgae biocontrol agent, but assessing its function in different reef systems should be a priority for future research.

It is reasonable to acknowledge the potential risk of urchin stocking in Kāneʻohe Bay to facilitate rapid *T. gratilla* population growth. However, we believe this risk is unlikely due to a number of factors, including *T. gratilla* stocking densities were similar to those observed in natural populations on Hawaiian reefs (Walsh et al., 2012). In addition, outplanted urchins remain under pressure from a wide range of natural predators such as fish, decapods, and cephalopods, and urchins were closely monitored by resource managers. Although urchins are reproductively viable, for reasons unknown, conditions in Kāneʻohe Bay have not been favorable for *T. gratilla* recruitment to patch reefs, and no natural recruitment of hatchery raised *T. gratilla* in Kāneʻohe Bay has been observed (B Neilson, 2017, unpublished data).

Invasive macroalgae declined across all four reefs examined in the study, which may have been related to environmental factors such as nutrients, water motion, temperature, and salinity (Glenn & Doty, 1990) throughout Kāneʻohe Bay. Herbivorous reef fish grazing has also been demonstrated to have a profound impact on macroalgae cover (Williams & Polunin, 2001; Burkepale & Hay, 2006; Hughes et al., 2007; Rasher, Hoey & Hay, 2013) and may have also contributed to macroalgae decline. For instance, Stamoulis et al. (2017) found *G. salicornia* was the second most prevalent macroalgae species in gut contents of



herbivorous reef fishes in Kāneʻohe Bay. While *E/K* and *A. spicifera* were also identified in fishes gut contents, these species were far less prevalent ([Stamoulis et al., 2017](#)). Although herbivorous fishes appear to be a substantial contributor to controlling invasive macroalgae, protection of herbivorous fishes (in a small marine protected area) alone was not able to reduce invasive macroalgae levels significantly in all reef habitats ([Stamoulis et al., 2017](#)). Other Hawaiian reefs that have protection rules in place for herbivores, including *T. gratilla*, have found significant reductions in macroalgae including *A. spicifera* ([Williams et al., 2016](#)). Based on the findings of this study and others ([Conklin & Smith, 2005](#); [Stimson, Cunha & Philippoff, 2007](#); [Westbrook et al., 2015](#); [Chon, 2014](#)), *T. gratilla* appears to be the most effective single biocontrol species when combined with manual removal for treating invasive macroalgae on Hawaiʻi coral reefs.

*T. gratilla* are effective invasive macroalgae grazers ([Conklin & Smith, 2005](#); [Stimson, Cunha & Philippoff, 2007](#); [Chon, 2014](#); [Westbrook et al., 2015](#)), however, it has been suggested that urchin herbivory may have negative effects. For instance, indiscriminate low-profile grazing on the reef substratum may reduce the survival of juvenile corals ([Forsman, Rinkevich & Hunter, 2006](#)), newly settled coral recruits, or CCA ([Stimson, Cunha & Philippoff, 2007](#)). CCA are an important component of reef structure and stability ([Bak, 1976](#)), in addition to providing a substratum for coral recruitment and development ([Morse et al., 1996](#); [Negri et al., 2001](#); [Harrington et al., 2004](#)). However, we found no negative effects of treatments (i.e., manual removal + urchin grazing) on coral cover or CCA. Instead, coral cover and CCA showed positive trends through time independent of treatments. Similarly, [Stanley \(2014\)](#) found *T. gratilla* had no effect on settlement or survival of six Kāneʻohe Bay coral species and [Valentine & Edgar \(2010\)](#) found *T. gratilla* outbreaks had no effect on coral cover in Lord Howe Island, Australia. Together, these results suggest *T. gratilla* stocked at densities for biocontrol actions do not appear detrimental to reef corals or ecologically important CCA. Although no treatment effect of native macroalgae was observed in this study, we speculate that urchin biocontrol may inhibit native macroalgae growth and colonization based on the findings of [Valentine & Edgar \(2010\)](#) following a *T. gratilla* outbreak and [Chon \(2014\)](#) who found a significant decline in native macroalgae in *T. gratilla* enclosure experiments at stocking density  $>2$  urchins  $m^{-2}$ . Although the density of urchins in this study (0.74–0.9 urchins  $m^{-2}$ ) was lower than [Chon's \(2014\)](#) recommended 2 urchins  $m^{-2}$ , it still may be advisable to reduce urchin densities once urchins have grazed invasive macroalgae to  $<2\%$  cover in order to limit potential negative effects on native macroalgae colonization and growth.

The observed decrease in invasive macroalgae on control reefs over the course of the study did not result in a significant increase in any single benthic cover type as a result of the treatment ([Fig. 4](#)). However, the benthic community composition appears to have changed throughout the course of the study ([Fig. 6](#)). This shift from areas dominated by invasive macroalgae to a mix of coral, CCA, native macroalgae, and SBT (sand/bare/turf) may favor the settlement of native flora and fauna and increase the accessibility of suitable settlement substratum. Additionally, the application of manual removal plus urchin biocontrol resulted in no reductions in ecologically important benthic groups, such as corals and CCA. Approaches to control invasive macroalgae are diverse and not always

benign (*Anderson, 2007*), and applying such treatments on ecologically sensitive habitats, such as coral reefs, demand minimal environmental impacts. Although *E/K* was carefully hand removed from the reef and fed into the vacuum system, the process does cause low levels of disturbance to the reef including abrasion to coral tissue, dislodgment of benthic organisms and habitat, and the potential for bycatch of small or cryptic organisms associated with macroalgae. It is therefore advised that macroalgae manual removal be performed once or infrequently to reduce the potential for environmental disturbance.

Manual removal of invasive macroalgae in combination with sea urchin outplanting proved to be a successful approach for invasive macroalgae mitigation in Hawai'i. However, the substantial costs and labor requirements, as well as the necessity of a native herbivore amenable to culturing and outplanting, may limit the broad application of this approach in other reefs or at broader scales than those tested here. Therefore, the effectiveness of this approach on other reef systems required appropriate testing at small experimental scales before reef-wide treatments are applied (*Conklin & Smith, 2005; DLNR, 2013*), in addition to long term financial support to advance laboratory tests to the reef-wide scale. Such tests are necessary to evaluate environmental impacts, the need for manual removal, sea urchin biocontrol or both in controlling invasive macroalgae, and weighing logistic and financial constraints.

### **Control costs**

The control of invasive macroalgae for this study was a substantial investment by managers at a cost of \$817,000 to treat 24,600 km<sup>2</sup> (\$33 m<sup>-2</sup>) of affected reef. This figure not only demonstrates the need to invest in invasive species prevention through strict vector management and importation rules, but also indicates the importance of Hawai'i's reefs in order to justify such a large expense. *Cesar & Van Beukering (2004)* estimated a 360 million dollar a year net benefit for Hawai'i's economy and a total value of 10 billion dollars. Therefore, investment in restoration and preservation of coral reef ecosystems by controlling invasive macroalgae may be a worthwhile economic investment. It should also be noted that the cost per m<sup>2</sup> of treated reef can be reduced by further advances in sea urchin aquaculture.

### **CONCLUSION**

Our findings show that manual removal and sea urchin biocontrol applied at a reef-wide scale is an effective approach for controlling invasive macroalgae, but should not be viewed as a replacement for managing some of the other drivers of macroalgae phase shifts, including increased nutrients (*Lapointe, 1997; Stimson, Larned & McDermid, 1996*), and reduced herbivory (*Hay, 1984; Hughes, 1994; Larned, 1998; Bellwood et al., 2004*). In addition, the long-term effects (>3 years) are unknown and will require further monitoring in the years to come. The control techniques demonstrated in this study combined with watershed (*Richmond et al., 2007*) and herbivore (*Mumby & Steneck, 2008*) management are necessary to achieve broad goals of reef restoration and habitat improvement. Marine reserves and Herbivore Fisheries Management Areas have shown positive results in Hawai'i, by increasing biomass of herbivorous reef fish and reducing cover of invasive macroalgae

(*Friedlander, Brown & Monaco, 2007; Williams et al., 2016*). Unfortunately, native reef fish and urchin assemblages may not be capable of controlling the combined growth rates of multiple invasive macroalgae species, and therefore, a suite of management strategies may be necessary to control invasive macroalgae at a large-scale.

## ACKNOWLEDGEMENTS

We would like to acknowledge the contribution to this project by the following individuals and organizations: DAR Staff: Jonathan Blodgett, Karen Brittain, Vince Calabrese, David Cohen, Megan Cook, Michael Fujimoto, Justin Goggins, Katharine Hind, Brian Kanenaka, Dan Lager, Derek Levault, Sean Louie, Paul Murakawa, Kimberly Peyton, Andrew Purves, Neil Rodriguez, Brad Stubbs, Kendall Tejchma, Travis Thyberg, Jackie Troller, Ray Uchimura, and Tristen Walker. The Hawai'i Coral Reef Initiative/Social Science Research Institute: Kristine Davidson, Pamela Fujii, Mike Hamnett, and Charissa Minato. The Nature Conservancy: Ryan Carr, Eric Conklin, Justin Dennis, Jan Eber, Kim Hum, Hank Lynch, Dwayne Minton, and Kanekoa Shultz, Eva Zafarano, Kāne'ōhe Bay Farmers: Charlie Reppun, John Reppun, and Paul Reppun. Hawai'i Institute of Marine Biology and University of Hawai'i: Megan Donahue, Mary Donovan, Kyle Edwards, Zac Forsman, Erik Franklin, Ku'ulei Rodgers, Kosta Stamoulis, John Stimson, Rob Toonen, and Charley Westbrook. NOAA: Mathew Parry, USFWS: Tony Montgomery, The Pacific Cooperative Studies Unit, and the Research Corporation of the University of Hawai'i. We also thank the reviewers for helpful comments on an earlier draft of this manuscript.

## ADDITIONAL INFORMATION AND DECLARATIONS

### Funding

This work was made possible by funding provided by The State of Hawai'i, Department of Land and Natural Resources, a Hawai'i Invasive Species Council grant, a NOAA Estuary Restoration Grant, and a USFWS Sport Fish Restoration Grant. The funders had no role in study design, data collection and analysis, decision to publish, or preparation of the manuscript.

### Grant Disclosures

The following grant information was disclosed by the authors:  
A Hawai'i Invasive Species Council grant.  
A NOAA Estuary Restoration Grant.  
A USFWS Sport Fish Restoration Grant.

### Competing Interests

The authors declare there are no competing interests.

### Author Contributions

- Brian J. Neilson conceived and designed the experiments, performed the experiments, analyzed the data, contributed reagents/materials/analysis tools, prepared figures

and/or tables, authored or reviewed drafts of the paper, approved the final draft, wrote manuscript, analyzed data, performed and collected the data.

- Christopher B. Wall analyzed the data, contributed reagents/materials/analysis tools, prepared figures and/or tables, authored or reviewed drafts of the paper, approved the final draft, wrote the manuscript and performed the analysis.
- Frank T. Mancini conceived and designed the experiments, performed the experiments, contributed reagents/materials/analysis tools, authored or reviewed drafts of the paper, approved the final draft, developed the study design, oversaw data collection and management, edited manuscript.
- Catherine A. Gewecke conceived and designed the experiments, performed the experiments, contributed reagents/materials/analysis tools, authored or reviewed drafts of the paper, approved the final draft, developed study design, edited the manuscript and collected data.

### Data Availability

The following information was supplied regarding data availability:

Neilson, Brian J, Wall, Christopher B, Mancini, Frank T, & Gewecke, Cathy A. (2018). Herbivore biocontrol and manual removal successfully reduce invasive macroalgae on coral reefs. <http://doi.org/10.5281/zenodo.1285551>.

### Supplemental Information

Supplemental information for this article can be found online at <http://dx.doi.org/10.7717/peerj.5332#supplemental-information>.

## REFERENCES

- Anderson LWJ. 2007.** Control of invasive seaweeds. *Botanica Marina* **50**:418–437  
DOI 10.1515/BOT.2007.045.
- Ask EI, Azanza RV. 2002.** Advances in cultivation technology of commercial eucheumatoid species: a review with suggestions for future research. *Aquaculture* **206**:257–277  
DOI 10.1016/S0044-8486(01)00724-4.
- Bak RPM. 1976.** The growth of coral colonies and the importance of crustose coralline algae and burrowing sponges in relation with carbonate accumulation. *Netherlands Journal of Sea Research* **10**:285–337 DOI 10.1016/0077-7579(76)90009-0.
- Ballesteros E. 2006.** Mediterranean coralligenous assemblages: a synthesis of present knowledge. *Oceanography and Marine Biology: An Annual Review* **44**:123–195.
- Bates D, Maechler M, Bolker B, Walker S. 2015.** Fitting linear mixed-effects models using lme4. *Journal of Statistical Software* **67**:1–48 DOI 10.18637/jss.v067.i01.
- Bellwood D, Hughes T, Folke C, Nyström M. 2004.** Confronting the coral reef crisis. *Nature* **429**:827–833 DOI 10.1038/nature02691.
- Boudouresque CF, Lemée R, Mari X, Meinesz A. 1996.** The invasive alga *Caulerpa taxifolia* is not a suitable diet for the sea urchin *Paracentrotus lividus*. *Aquatic Botany* **53**:245–250 DOI 10.1016/0304-3770(96)01021-2.

- Bruno JF, Selig ER. 2007.** Regional decline of coral cover in the Indo-Pacific: timing, extent, and subregional comparisons. *PLOS ONE* 2:e0000711  
[DOI 10.1371/journal.pone.0000711](https://doi.org/10.1371/journal.pone.0000711).
- Burkepile DE, Hay ME. 2006.** Herbivore vs. nutrient control of marine primary producers: context-dependent effects. *Ecology* 87:3128–3139  
[DOI 10.1890/0012-9658\(2006\)87\[3128:HVNCOM\]2.0.CO;2](https://doi.org/10.1890/0012-9658(2006)87[3128:HVNCOM]2.0.CO;2).
- Byers JE. 2002.** Impact of nonindigenous species on natives enhanced by anthropogenic alteration of selection regimes. *Oikos* 97:449–458  
[DOI 10.1034/j.1600-0706.2002.970316.x](https://doi.org/10.1034/j.1600-0706.2002.970316.x).
- Cebrian J, Shurin JB, Borer ET, Cardinale BJ, Ngai JT, Smith MD, Fagan WF. 2009.** Producer nutritional quality controls ecosystem trophic structure. *PLOS ONE* 4:e4929 [DOI 10.1371/journal.pone.0004929](https://doi.org/10.1371/journal.pone.0004929).
- Cesar HSJ, Van Beukering PJH. 2004.** Economic valuation of the coral reefs of Hawai'i. *Pacific Science* 58:231–242 [DOI 10.1353/psc.2004.0014](https://doi.org/10.1353/psc.2004.0014).
- Chandrasekaran S, Nagendran NA, Pandiaraja D, Krishnankutty N, Kamalakannan B. 2008.** Bioinvasion of *Kappaphycus alvarezii* on corals in the Gulf of Mannar, India. *Current Science* 94:1167–1172.
- Cheshire A, Westphalen G, Boxall V, Marsh R, Gilliland J, Collings G, Seddon S, Loo M. 2002.** *Caulerpa taxifolia* in the West Lakes and the Port River, South Australia: distribution, eradication options and consequences. SARDI aquatic sciences Publication Number RD02/0161. A report to the PIRSA fisheries marine habitat program, 1–64.
- Chon GD. 2014.** Optimizing biocontrol: assessing benthic community changes with different sizes and densities of *Tripneustes gratilla* on patch reef dominated by invasive *Kappaphycus* spp. in Kāneʻohe Bay, Hawai'i. MS Thesis, Hawai'i Pacific University.
- Conklin EJ. 2007.** The influence of preferential foraging, alien algal species, and predation risk on the interaction between herbivorous fishes and reef macroalgae. Ph.D thesis, University of Hawai'i at Manoa, Honolulu, Hawai'i, United States of America, 257 pp.
- Conklin KY, Kurihara A, Shirwood AR. 2009.** A molecular method for identification of the morphologically plastic invasive algal genera *Euclima* and *Kappaphycus* (Rhodophyta, Gigartinales) in Hawai'i. *Journal of Applied Phycology* 21:691–699  
[DOI 10.1007/s10811-009-9404-2](https://doi.org/10.1007/s10811-009-9404-2).
- Conklin EJ, Smith JE. 2005.** Abundance and spread of the invasive red alga, *Kappaphycus* spp. in Kaneʻohe Bay, Hawai'i and an experimental assessment of management options. *Biological Invasions* 7:1029–1039 [DOI 10.1007/s10530-004-3125-x](https://doi.org/10.1007/s10530-004-3125-x).
- Curiel D, Guidetti P, Bellemo G, Scattolin M, Marzocchi M. 2001.** The introduced alga *Undaria pinnatifida* (Laminariales, Alariaceae) in the Lagoon of Venice. *Hydrobiologia* 477:209–219 [DOI 10.1023/A:1021094008569](https://doi.org/10.1023/A:1021094008569).
- Davidson AD, Campbell ML, Hewitt CL, Schaffelke B. 2015.** Assessing the impacts of nonindigenous marine macroalgae: an update of current knowledge. *Botanica Marina* 58:55–79 [DOI 10.1515/bot-2014-0079](https://doi.org/10.1515/bot-2014-0079).

- De'ath G, Fabricius KE, Sweatman H, Puotinen M. 2012.** The 27-year decline of coral cover on the Great Barrier Reef and its causes. *Proceedings of the National Academy of Sciences of the United States of America* **109**:17995–17999 DOI [10.1073/pnas.1208909109](https://doi.org/10.1073/pnas.1208909109).
- Dell CLA, Guilherme O, Longo GO, Hay ME. 2016.** Positive feedbacks enhance macroalgal resilience on degraded coral reefs. *PLOS ONE* **11**(5):e0155049 DOI [10.1371/journal.pone.0155049](https://doi.org/10.1371/journal.pone.0155049).
- DLNR. 2013.** Reef 16 pilot project report testing invasive algae control using the Super Sucker and grazing sea urchins. Punchbowl St. Honolulu, Hawai'i: Department of Land and Natural Resources, Division of Aquatic Resources.
- Done TJ. 1992.** Phase shifts in coral reef communities and their ecological significance. *Hydrobiologia* **247**:121–132 DOI [10.1007/BF00008211](https://doi.org/10.1007/BF00008211).
- Doty MS. 1961.** *Acanthophora*, a possible invader of the marine flora of Hawai'i. *Pacific Science* **15**:547–552.
- Doty MS. 1977.** *Eucheuma*—current marine agronomy. In: Klauss R, ed. *The marine plant biomass of the pacific*. Corvallis: Oregon State University Press, 203–214.
- Eakin C, Liu G, Gomez A, De La Cour J, Heron S, Skirving W, Geiger EF, Marsh BL, Tirak KV, Strong AE. 2017.** Ding, dong, the witch is dead (?)—three years of global coral bleaching 2014–2017. *Reef Encounter* **32**:33–38.
- ESRI. 2011.** ArcGIS Desktop Release 10. Available at <http://desktop.arcgis.com/en/>.
- Food Agriculture Organization of the United Nations. 2015.** Fisheries and Aquaculture Information and Statistics Services. Available at <http://www.fao.org/figis/> (accessed on 13 May 2017).
- Forsman ZH, Rinkevich B, Hunter CL. 2006.** Investigating fragment size for culturing reef-building corals (*Porites lobata* and *P. compressa*) in *ex situ* nurseries. *Aquaculture* **261**:89–97 DOI [10.1016/j.aquaculture.2006.06.040](https://doi.org/10.1016/j.aquaculture.2006.06.040).
- Friedlander AM, Brown E, Monaco ME. 2007.** Defining reef fish habitat utilization patterns in Hawaii: comparisons between marine protected areas and areas open to fishing. *Marine Ecology Progress Series* **351**:221–233 DOI [10.3354/meps07112](https://doi.org/10.3354/meps07112).
- Gardner TA, Cote IM, Gill JA, Grant A, Watkinson AR. 2003.** Long-term region-wide declines in Caribbean corals. *Science* **301**:958–960 DOI [10.1126/science.1086050](https://doi.org/10.1126/science.1086050).
- Glasby T, Cresse R, Gibson P. 2005.** Experimental use of salt to control the invasive marine alga *Caulerpa taxifolia* in NSW, Australia. *Biological Conservation* **122**:573–580 DOI [10.1016/j.biocon.2004.09.012](https://doi.org/10.1016/j.biocon.2004.09.012).
- Glenn EP, Doty MS. 1990.** Growth of the Seaweeds *Kappaphycus alvarezii*, *K. striatum* and *Eucheuma denticulatum* as affected by environment in Hawaii. *Aquaculture* **84**:245–255 DOI [10.1016/0044-8486\(90\)90090-A](https://doi.org/10.1016/0044-8486(90)90090-A).
- Harrington L, Fabricius K, De'ath G, Negri A. 2004.** Recognition and selection of settlement substrata determine post-settlement survival in corals. *Ecology* **85**:3428–3437 DOI [10.1890/04-0298](https://doi.org/10.1890/04-0298).
- Hay ME. 1984.** Predictable spatial escapes from herbivory: how do these affect the evolution of herbivore resistance in tropical marine communities? *Oecologia* **64**:396–407 DOI [10.1007/BF00379139](https://doi.org/10.1007/BF00379139).

- Hewitt CL, Campbell ML, McEnulty F, Moore KM, Murfet NB, Roberston B, Schaffelke B. 2005. Efficacy of physical removal of a marine pest: the introduced kelp *Undaria pinnatifida* in a Tasmanian Marine Reserve. *Biological Invasions* 7:251–263 DOI 10.1007/s10530-004-0739-y.
- Hill J, Wilkinson C. 2004. *Methods for ecological monitoring of coral reefs*. Townsville: Australia Institute of Marine Science, 117.
- Hughes TP. 1994. Catastrophes, phase shifts, and large-scale degradation of a Caribbean coral reef. *Science* 265:1547–1551 DOI 10.1126/science.265.5178.1547.
- Hughes TP, Kerry JT, Álvarez Noriega M, Álvarez Romero JG, Anderson KD, Baird AH, Babcock RC, Bejer M, Bellwood DR, Berkelmans R, Bridge TC, Butler IR, Byrne M, Cantin NE, Comeau S, Connolly SR, Cumming GS, Dalton SJ, Diaz-Pulido G, Eakin CM, Figueira WF, Gilmour JP, Harrison HB, Heron SF, Hoey AS, Hobbs JPA, Hoogenboom MO, Kennedy EV, Kuo CY, Lough JM, Lowe RJ, Liu G, McCulloch MT, Malcom HA, McWilliam MJ, Pandolfi JM, Pears RJ, Pratchett MS, Schoepf V, Simpson T, Skirving WJ, Sommer B, Torda G, Wachenfeld DR, Willis BL, Wilson SK. 2017. Global warming and recurrent mass bleaching of corals. *Nature* 543:373–377 DOI 10.1038/nature21707.
- Hughes TP, Rodrigues M, Bellwood D, Ceccarelli D, Hoegh-Guldberg O, McCook L, Moltchanivskyj N, Pratchett MS, Steneck RS, Willis B. 2007. Phase shifts, herbivory, and the resilience of coral reefs to climate change. *Current Biology* 17:360–365 DOI 10.1016/j.cub.2006.12.049.
- Kružić P, Žuljević A, Nikolić V. 2008. The highly invasive alga *Caulerpa racemosa* var. *cylindracea* poses a new threat to the banks of the coral *Cladocora caespitosa* in the Adriatic Sea. *Coral Reefs* 27:441–441 DOI 10.1007/s00338-008-0358-7.
- Kuznetsova A, Brockhoff PB, Christensen RHB. 2017. lmerTest package: tests in linear mixed effects models. *Journal of Statistical Software* 82:1–26.
- Lapointe BE. 1997. Nutrient thresholds for bottom-up control of macroalgae blooms on coral reefs in Jamaica and Southeast Florida. *Limnology and Oceanography* 42:1119–1131 DOI 10.4319/lo.1997.42.5\_part\_2.1119.
- Larned ST. 1998. Nitrogen versus phosphorous limited growth and sources of nutrients for coral reef macroalgae. *Marine Biology* 132:409–421 DOI 10.1007/s002270050407.
- Lenth RV. 2016. Least-squares means: the R Package lsmeans. *Journal of Statistical Software* 69:1–33 DOI 10.18637/jss.v069.i01.
- Longenecker K, Bolick H, Kawamoto R. 2011. Macrofaunal invertebrate communities on Hawaii's shallow coral-reef flats: changes associated with the removal of an invasive alien alga. Bishop Museum Technical Report 54, Hawai'i Biological Survey. Bishop Museum, 1–51.
- Loureiro R, Gachon CMM, Rebours C. 2015. Seaweed cultivation: potential and challenge of crop domestication at an unprecedented pace. *New Phytologist* 206:489–492 DOI 10.1111/nph.13278.
- Marks LM, Reed DC, Obaza AK. 2017. Assessment of control methods for the invasive seaweed *Sargassum horneri* in California, USA. *Management of Biological Invasions* 8:205–213 DOI 10.3391/mbi.2017.8.2.08.

- Martinez JA, Smith CM, Richmond RH. 2012.** Invasive algal mats degrade coral reef physical habitat quality. *Estuarine, Coastal and Shelf Science* **99**:42–49 DOI [10.1016/j.ecss.2011.12.022](https://doi.org/10.1016/j.ecss.2011.12.022).
- Mate F, Namudu M, Lasi F. 2003.** Report on the outcomes of the train-the-trainers workshop on *Kappaphycus* seaweed farming in Pacific island countries. Tech Rep Mar Stud Programme Univ South Pac, vol. 6, 26.
- Miller AW, Chang AL, Cosentino-Manning N, Ruiz GM. 2004.** A new record and eradication of the Northern Atlantic alga *Ascophyllum nodosum* (Phaeophyceae) from San Francisco Bay, California, USA. *Journal of Phycology* **40**:1028–1031 DOI [10.1111/j.1529-8817.2004.04081.x](https://doi.org/10.1111/j.1529-8817.2004.04081.x).
- Moburg F, Folke C. 1999.** Ecological goods and services of coral reef ecosystems. *Ecological Economics* **29**:215–233 DOI [10.1016/S0921-8009\(99\)00009-9](https://doi.org/10.1016/S0921-8009(99)00009-9).
- Morse ANC, Iwao K, Baba M, Shimoike K, Hayashibara T, Omori M. 1996.** An ancient chemosensory mechanism brings new life to coral reefs. *Biological Bulletin* **191**:149–154 DOI [10.2307/1542917](https://doi.org/10.2307/1542917).
- Mumby PJ, Steneck RS. 2008.** Coral reef management and conservation in light of rapidly evolving ecological paradigms. *Trends in Ecology & Evolution* **23**:555–563 DOI [10.1016/j.tree.2008.06.011](https://doi.org/10.1016/j.tree.2008.06.011).
- Mumby PJ, Steneck RS, Adjeroud M, Arnold SN. 2015.** High resilience masks underlying sensitivity to algal phase shifts of Pacific coral reefs. *Oikos* **125**(5) DOI [10.1111/oik.02673](https://doi.org/10.1111/oik.02673).
- Murphy JWA, Richmond RH. 2016.** Changes to coral and health and metabolic activity under oxygen deprivation. *PeerJ* **4**:e1956 DOI [10.7717/peerj.1956](https://doi.org/10.7717/peerj.1956).
- Naylor RL, Williams SL, Strong DR. 2001.** Aquaculture—a gateway for exotic species. *Science* **294**:1655–1656 DOI [10.1126/science.1064875](https://doi.org/10.1126/science.1064875).
- Negri AP, Webster NS, Hill RT, Heyward AJ. 2001.** Metamorphosis of broadcast spawning corals in response to bacteria isolated from crustose algae. *Marine Ecology Progress Series* **223**:121–131 DOI [10.3354/meps223121](https://doi.org/10.3354/meps223121).
- Nyberg CD, Wallentinus I. 2005.** Can species traits be used to predict marine macroalgal introductions? *Biological Invasions* **7**:265–279 DOI [10.1007/s10530-004-0738-z](https://doi.org/10.1007/s10530-004-0738-z).
- Pan RT. 2012.** The growth and survival of the sea urchin *Tripneustes gratilla*, a possible biocontrol agent for invasive macroalgae. MS Thesis, University of Hawai‘i, HI, 1–82.
- Pandolfi JM, Bradbury RH, Sala E, Hughes TP, Bjorndal KA, Cooke RG, McArdle D, McClenachan L, Newman MJ, Paredes G, Warner RR, Jackson JB. 2003.** Global trajectories of the long-term decline of coral reef ecosystems. *Science* **301**:955–958 DOI [10.1126/science.1085706](https://doi.org/10.1126/science.1085706).
- Pickering T, Forbes A. 2002.** The progress of aquaculture development in Fiji. Technical Report, Marine studies programme. University of South Pacific 2002/1, 1–40.
- Radulovich R, Umanzor S, Cabrera R, Mata R. 2015.** Tropical seaweeds for human food, their cultivation and its effect on biodiversity enrichment. *Aquaculture* **436**:40–46 DOI [10.1016/j.aquaculture.2014.10.032](https://doi.org/10.1016/j.aquaculture.2014.10.032).



- Rasher DB, Hay ME. 2010.** Chemically rich seaweeds poison corals when not controlled by herbivores. *Proceedings of the National Academy of Sciences of the United States of America* **107**:9683–9688 DOI [10.1073/pnas.0912095107](https://doi.org/10.1073/pnas.0912095107).
- Rasher DB, Hoey AS, Hay ME. 2013.** Consumer diversity interacts with prey defenses to drive ecosystem function. *Ecology* **94**:1347–1358 DOI [10.1890/12-0389.1](https://doi.org/10.1890/12-0389.1).
- R Development Core Team. 2017.** R: a language and environment for statistical computing. Vienna: R Foundation for Statistical Computing. Available at <http://www.R-project.org>.
- Richmond RH, Rongo T, Golbuu Y, Victor S, Idechong N, Davis G, Kostka W, Neth L, Hamnett M, Wolanski E. 2007.** Watershed and coral reefs: conservation science, policy, and implementation. *Bioscience* **57**:598–607 DOI [10.1641/B570710](https://doi.org/10.1641/B570710).
- Rodgers SK, Cox EF. 1999.** Rate of spread of introduced Rhodophytes *Kappaphycus alvarezii*, *Kappaphycus striatum*, and *Gracilaria salicornia* and their current distribution in Kane’ohe Bay, O’ahu, Hawai’i. *Pacific Science* **53**:232–241.
- Ruiz RM, Fofonoff PW, Carlton JT, Wonham MJ, Hines AH. 2000.** Invasion of coastal marine communities in North America: apparent patterns, processes, and biases. *Annual Review of Ecology and Systematics* **31**:481–531 DOI [10.1146/annurev.ecolsys.31.1.481](https://doi.org/10.1146/annurev.ecolsys.31.1.481).
- Ruiz GM, Fofonoff P, Hines AH, Grosholz ED. 1999.** Non-indigenous species as stressors in estuarine and marine communities: assessing invasion impacts and interactions. *Limnology and Oceanography* **44**:950–972 DOI [10.4319/lo.1999.44.3\\_part\\_2.0950](https://doi.org/10.4319/lo.1999.44.3_part_2.0950).
- Russell DJ. 1983.** Ecology of the imported red seaweed *Eucheuma striatum* Schmitz on Coconut Island, O’ahu, Hawai’i. *Pacific Science* **37**:87–107.
- Russell DJ. 1992.** The ecological invasion of Hawaiian reefs by two marine red algae, *Acanthophora spicifera* (Vahl) Boerg. and *Hypnea musciformis* (Wulfen) J. Ag. and their association with two native species, *Laurencia nidifica* J. Ag. and *Hypnea cervicornis* J. Ag. *ICES Marine Science Symposia* **194**:110–125.
- Schaffelke B, Evers D, Walhorn A. 1995.** Selective grazing of the isopod *Idotea baltica* between *Fucus evanescens* and *F. vesiculosus* from Kiel Fjord (western Baltic). *Marine Biology* **124**:215–218 DOI [10.1007/BF00347125](https://doi.org/10.1007/BF00347125).
- Schaffelke B, Smith JE, Hewitt CL. 2006.** Introduced macroalgae—a growing concern. In: Anderson R, Brodie J, Onsøyen E, Critchley AT, eds. *Eighteenth international seaweed symposium. Developments in Applied Phycology, vol. 1*. Dordrecht: Springer.
- Scheibling RE, Hatcher BG. 2007.** The ecology of *Strongylocentrotus droebachiensis*. In: Lawrence JM, ed. *Edible sea urchins: biology and ecology. Developments in Aquaculture and Fisheries Science 37*. Amsterdam: Elsevier Science, 353–382.
- Sellers A, Saltonstall K, Davidson T. 2015.** The introduced alga *Kappaphycus alvarezii* (Doty ex P.C. Silva, 1996) in abandoned cultivation sites in Bocas del Toro, Panama. *BioInvasions Records* **4**:1–7 DOI [10.3391/bir.2015.4.1.01](https://doi.org/10.3391/bir.2015.4.1.01).
- Smith JE, Hunter CL, Conklin EJ, Most R, Sauvage T, Squair C, Smith CM. 2004.** Ecology of the Invasive Red Alga *Gracilaria salicornia* (Rhodophyta) on O’ahu, Hawai’i. *Pacific Science* **58**:325–343 DOI [10.1353/psc.2004.0023](https://doi.org/10.1353/psc.2004.0023).

- Smith JE, Hunter CL, Smith CM. 2002.** Distribution and reproductive characteristics of nonindigenous and invasive marine algae in the Hawaiian Islands. *Pacific Science* 56:299–315 DOI [10.1353/psc.2002.0030](https://doi.org/10.1353/psc.2002.0030).
- Smith SV, Kimmerer WJ, Laws EA, Brock RE, Walsh TW. 1981.** Kāneʻohe Bay sewage diversion experiment: perspectives on ecosystem responses to nutritional perturbation. *Pacific Science* 35:279–395.
- Smith JE, Smith CM, Hunter CL. 2001.** An experimental analysis of the effects of herbivory and nutrient enrichment on benthic community dynamics on a Hawaiʻian reef. *Coral Reefs* 19:332–342 DOI [10.1007/s003380000124](https://doi.org/10.1007/s003380000124).
- Stamoulis KA, Friedlander AM, Meyer CG, Fernandez-Silva I, Toonen RJ. 2017.** Coral reef grazer-benthos dynamics complicated by invasive algae in a small marine reserve. *Scientific Reports* 7:43819 DOI [10.1038/srep43819](https://doi.org/10.1038/srep43819).
- Stanley LA. 2014.** Patterns of coral recruitment in the presence of invasive algae and sea urchin biocontrol. MS Thesis, Hawaiʻi Pacific University, HI, 1–66.
- Stimson JS, Cunha T, Philippoff J. 2007.** Food preferences and related behavior of the browsing sea urchin *Tripneustes gratilla* (Linnaeus) and its potential for use as biological control agent. *Journal of Marine Biology* 151:1761–1772 DOI [10.1007/s00227-007-0628-x](https://doi.org/10.1007/s00227-007-0628-x).
- Stimson JS, Larned ST, Conklin EJ. 2001.** Effects of herbivory, nutrient levels, and introduced algae on the distribution and abundance of the invasive macroalga *Dictyosphaeria cavernosaa* in Kaneʻohe Bay, Hawaiʻi. *Coral Reefs* 19:343–357 DOI [10.1007/s003380000123](https://doi.org/10.1007/s003380000123).
- Stimson JS, Larned ST, McDermid K. 1996.** Seasonal growth of the coral reef macroalga *Dictyosphaeria cavernosa* (Forsk.) Borgesen and the effects of nutrient availability, temperature and herbivory on growth rate. *Journal of Experimental Marine Biology and Ecology* 196:53–67 DOI [10.1016/0022-0981\(95\)00123-9](https://doi.org/10.1016/0022-0981(95)00123-9).
- Thacker RW, Ginsberg DW, Paul VJ. 2001.** Effects of herbivore exclusion and nutrient enrichment on coral reef macroalgae and cyanobacteria. *Coral Reefs* 19:318–329 DOI [10.1007/s003380000122](https://doi.org/10.1007/s003380000122).
- Thibaut T, Meinesz V. 2000.** Are the Mediterranean ascoglossan molluscs *Oxynoe ulivacen* and *Lobiger serradifalci* suitable agents for a biological control against the invading tropical alga *Caulerpa taxifolia*. *Comptes Rendus de l'Academie des Sciences. Serie III, Sciences de la Vie* 323:477–488 DOI [10.1016/S0764-4469\(00\)00151-7](https://doi.org/10.1016/S0764-4469(00)00151-7).
- Valentine JP, Edgar GJ. 2010.** Impacts of a population outbreak of the urchin *Tripneustes gratilla* amongst Lord Howe Island coral communities. *Coral Reefs* 29:399–410 DOI [10.1007/s00338-010-0610-9](https://doi.org/10.1007/s00338-010-0610-9).
- Van de Leemput IA, Hughes TP, Van Nes EH, Scheffer M. 2016.** Multiple feedbacks and the prevalence of alternate stable states on coral reefs. *Coral Reefs* 35:857–865.
- Van Hooidek R, Maynard JA, Planes S. 2013.** Temporary refugia for coral reefs in a warming world. *Nature Climate Change* 3:508–511 DOI [10.1038/nclimate1829](https://doi.org/10.1038/nclimate1829).
- Vermeij MJ, Smith T, Dailer M, Smith C. 2009.** Release from native herbivores facilitates the persistence of invasive marine algae: a biogeographical comparison of the relative

- contribution of nutrients and herbivory to invasion success. *Biological Invasions* 11:1463–1474 DOI 10.1007/s10530-008-9354-7.
- Walsh W, Cotton S, Barnett C, Couch C, Preskitt L, Tissot B, Osada-D’Avella K. 2012.** Long-term monitoring of coral reefs of the main Hawaiian Islands. Final report prepared for the NOAA Coral Reef Conservation Program. Hawaii Division of Aquatic Resources, 1–97.
- Westbrook CE, Ringang RR, Cantero SMA, HDAR and TNC urchin team, Toonen RJ. 2015.** Survivorship and feeding preferences among size classes of outplanted sea urchins, *Tripneustes gratilla*, and possible use as biocontrol for invasive alien algae. *PeerJ* 3:e1235 DOI 10.7717/peerj.1235.
- Williams ID, Polunin NVC. 2001.** Large-scale associations between macroalgal cover and grazer biomass on mid-depth reefs in the Caribbean. *Coral Reefs* 19:358–366 DOI 10.1007/s003380000121.
- Williams SL, Smith SL. 2004.** Eradication of the invasive seaweed *Caulerpa taxifolia* by chlorine bleach. *Marine Ecology Progress Series* 272:69–76 DOI 10.3354/meps272069.
- Williams SL, Smith JE. 2007.** A global review of the distribution, taxonomy, and impacts of introduced seaweeds. *Annual Review of Ecology, Evolution, and Systematics* 38:327–359 DOI 10.1146/annurev.ecolsys.38.091206.095543.
- Williams ID, White DJ, Sparks RT, Lino KC, Zamzow JP, Kelly ELA, Ramey HL. 2016.** Response of herbivore fishes and benthos to 6 years protection at Kahekili Herbivore Fisheries Management Area, Maui. *PLOS ONE* 11:159100 DOI 10.1371/journal.pone.0159100.
- Woo M. 2000.** Ecological impacts and interactions of the introduced red alga *Kappaphycus striatum* in Kane’ohe Bay, O’ahu. Master’s thesis, Department of Botany, University of Hawai’i, Honolulu, HI.
- Wotton D, Hewitt C. 2004.** Marine biosecurity post-border management: developing incursion response systems for New Zealand. *New Zealand Journal of Marine and Freshwater Research* 38:553–559 DOI 10.1080/00288330.2004.9517260.
- Zemke-White WL, Smith JE. 2006.** Environmental impacts of seaweed farming in the tropics. In: Critchley AT, Ohno M, Largo D, eds. *World Seaweed Resource. (CD-ROM series)*. Amsterdam: ETI BioInformatics, University, 1–42.
- Zhang QS, Tang XX, Cong YZ, Qu SC, Luo SJ, Yang GP. 2007.** Breeding of an elite *Laminaria* variety 90-1 through inter-specific gametophyte crossing. *Journal of Applied Phycology* 19:303–311 DOI 10.1007/s10811-006-9137-4.
- Zuccarello GC, Smith JE, West JA. 2006.** Systematic and genetic variation in commercial *Kappaphycus* and *Euclidean* (Solieriaceae, Rhodophyta). *Journal of Phycology* 18:643–651 DOI 10.1007/s10811-006-9066-2.