


Article

Multi-Spectral Remote Sensing of Phytoplankton Pigment Absorption Properties in Cyanobacteria Bloom Waters: A Regional Example in the Western Basin of Lake Erie

Guoqing Wang ^{1,*}, Zhongping Lee ¹ and Colleen Mouw ² 

¹ School for the Environment, University of Massachusetts Boston, Boston, MA 02125, USA; zhongping.lee@umb.edu

² Graduate School of Oceanography, University of Rhode Island, Narragansett, RI 02882, USA; cmouw@uri.edu

* Correspondence: guoqing.wang001@umb.edu

Received: 5 October 2017; Accepted: 8 December 2017; Published: 15 December 2017

Abstract: Phytoplankton pigments absorb sunlight for photosynthesis, protect the chloroplast from damage caused by excess light energy, and influence the color of the water. Some pigments act as bio-markers and are important for separation of phytoplankton functional types. Among many efforts that have been made to obtain information on phytoplankton pigments from bio-optical properties, Gaussian curves decomposed from phytoplankton absorption spectrum have been used to represent the light absorption of different pigments. We incorporated the Gaussian scheme into a semi-analytical model and obtained the Gaussian curves from remote sensing reflectance. In this study, a series of sensitivity tests were conducted to explore the potential of obtaining the Gaussian curves from multi-spectral satellite remote sensing. Results showed that the Gaussian curves can be retrieved with 35% or less mean unbiased absolute percentage differences from MEdium Resolution Imaging Spectrometer (MERIS) and Moderate Resolution Imaging Spectroradiometer (MODIS)-like sensors. Further, using Lake Erie as an example, the spatial distribution of chlorophyll *a* and phycocyanin concentrations were obtained from the Gaussian curves and used as metrics for the spatial extent of an intense cyanobacterial bloom occurred in Lake Erie in 2014. The seasonal variations of Gaussian absorption properties in 2011 were further obtained from MERIS imagery. This study shows that it is feasible to obtain Gaussian curves from multi-spectral satellite remote sensing data, and the obtained chlorophyll *a* and phycocyanin concentrations from these Gaussian peak heights demonstrated potential application to monitor harmful algal blooms (HABs) and identification of phytoplankton groups from satellite ocean color remote sensing semi-analytically.

Keywords: remote sensing; phytoplankton pigments; cyanobacteria; MODIS; MERIS

1. Introduction

Spectral light absorption and backscattering are the two inherent optical properties directly controlling the light field in water and further influencing water color. Optical properties of phytoplankton, specifically the absorption coefficients of the pigments inside them, play a key role in determining both the penetration of radiant energy in water and the use of this radiant energy for photosynthesis. These pigment absorption coefficients and their concentrations are important for understanding photosynthetic rate [1,2], identifying and quantifying phytoplankton functional groups [3] and determining size class distributions ([4,5] and references therein). These properties of phytoplankton and their associated backscattering, along with colored dissolved organic matter absorption and non-algal particle absorption and scattering directly control the light field of water.

With the objective of expanding the ability to detect more pigments than just chlorophyll *a*, various methods have been proposed [6–8]. Most of these methods could obtain one or more pigments in addition to chlorophyll *a* from $R_{rs}(\lambda)$, but the accuracy was influenced by the presence of non-algal particles and dissolved organic matters in the water column. To reduce the influence from components other than phytoplankton, Wang et al. [9] developed a multi-pigment inversion model (MuPI) to obtain information of multiple pigments from hyperspectral $R_{rs}(\lambda)$. This model incorporated a Gaussian decomposition scheme into a semi-analytical inversion model and demonstrated that 13 Gaussian curves that contain important phytoplankton pigment information can be retrieved from hyperspectral remote sensing reflectance. The Gaussian scheme was first described by Hoepffner and Sathyendranath [10,11], and was one of the methods proposed to obtain multiple pigments from phytoplankton absorption coefficients [12–17]. Hoepffner and Sathyendranath [10] used these Gaussian curves to represent light absorption of different pigments and demonstrated that some of the Gaussian peak heights showed good relationships with phytoplankton pigments, such as peaks at 435 and 675 nm for chlorophyll *a*, peaks at 643 nm for chlorophyll *c*, peaks at 460 and 655 nm for chlorophyll *b*, and peaks at 489 and 582 nm for carotenoids. This Gaussian decomposition scheme sheds light on the potential of obtaining information for multiple phytoplankton pigments beyond chlorophyll *a* semi-analytically using bio-optical techniques.

Most of the past and current operational ocean color satellite missions are multispectral. It is thus necessary to evaluate the viability and associated uncertainties of obtaining these Gaussian curves from multi-spectral remote sensing data. Using measurements from cyanobacteria bloom waters in different regions, we validated the MuPI performance in obtaining multiple independent Gaussian curves, and the sensitivity of MuPI to the specific spectral bands of existing ocean color satellite sensors. Further, the inversion scheme was applied to Hyperspectral Imager for the Coastal Ocean (HICO), and Moderate Resolution Imaging Spectroradiometer aboard the Aqua satellite (MODIS-Aqua), and MEdium Resolution Imaging Spectrometer (MERIS) imagery over Lake Erie to obtain the spatial distributions of pigment absorption coefficients, chlorophyll *a* (Chl-*a*) and phycocyanin (PC) for a cyanobacteria bloom event in the western basin of Lake Erie.

2. Materials and Methods

2.1. In Situ Measurements

2.1.1. Study Areas

The in situ measurements were obtained from different areas at different seasons around the world, which include ponds in the state of Mississippi, U.S.A. (MS), Lake Taihu, China (LT), and Lake Erie, U.S.A. (LE).

Mississippi Pond dataset (MS): This dataset includes 41 samples of remote sensing reflectance ($R_{rs}(\lambda)$, sr^{-1}) and absorption coefficients of phytoplankton ($a_{ph}(\lambda)$, m^{-1}), non-algal particles ($a_d(\lambda)$), and gelbstoff ($a_g(\lambda)$). This dataset (see Mishra et al. [18] for details) was collected from a series of highly turbid and productive aquaculture ponds at various bloom stages (initiation, peak, and senescence) of cyanobacteria (Chl-*a* concentration varied from 59 to 1377 $\text{mg}\cdot\text{m}^{-3}$), located in northwestern Mississippi, U.S.A., where cyanobacteria blooms with *Planktothrix agardhii* as the most abundant species were occurring when the in situ data were collected.

Lake Taihu dataset (LT): This dataset includes 45 $R_{rs}(\lambda)$ spectra, corresponding spectra of $a_d(\lambda)$, $a_g(\lambda)$, and $a_{ph}(\lambda)$ (350–750 nm) collected from Lake Taihu, China under cyanobacteria bloom conditions (Chl-*a*: 10–222 $\text{mg}\cdot\text{m}^{-3}$) where the dominant species was *Microcystis aeruginosa*. Water samples and optical data of surface water were collected during two surveys in January–August 2011 and November 2011, respectively.

Lake Erie dataset (LE): This dataset is composed of 36 $R_{rs}(\lambda)$, $a_d(\lambda)$, $a_g(\lambda)$, and $a_{ph}(\lambda)$ samples, and 20 Chl-*a* and PC concentrations. Cyanobacteria blooms dominated by *Microcystis aeruginosa* have been seasonally reoccurring in the western basin of Lake Erie since the mid-1990s [19]. The field

measurements were collected during cruises from 20–23 August 2013 and 18–21 August 2014 in western Lake Erie at 16 and 20 stations, respectively, during the peak cyanobacteria bloom period [20,21], with chlorophyll concentrations ranging from >1 to $100 \text{ s of } \text{mg}\cdot\text{m}^{-3}$.

Since the ponds are too small for the MODIS and MERIS 1 km spatial resolution imagery, Lake Erie was selected as a local example for application of the method to HICO, MODIS and MERIS imageries to obtain pigment concentrations and Gaussian absorption distribution. The cyanobacteria bloom which occurred in Lake Erie in August 2014 was one of the most serious, causing disruption to the drinking water supply in Toledo, U.S.A. The 2014 cruise was conducted during this event and the sampling locations along with the Chl-*a* and PC concentrations at each station, are shown in Figure 1, where PC concentrations as high as $\sim 200 \text{ mg}\cdot\text{m}^{-3}$ were noted in the southern portion of Lake Erie.

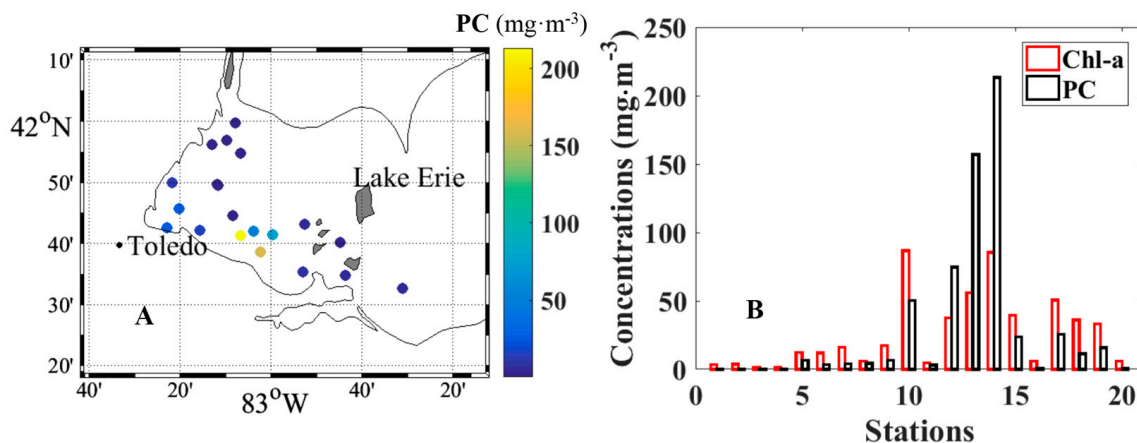


Figure 1. (A) Sampling locations in the western basin of Lake Erie with different colors reflecting the different phycocyanin (PC) concentrations. (B) The bar chart shows the chlorophyll *a* (Chl-*a*) and phycocyanin (PC) concentrations of each station.

2.1.2. Remote Sensing Reflectance

The remote sensing reflectance of the MS dataset was acquired in the range of 400–900 nm with a sampling interval of 0.3 nm by deploying a dual sensor system with two inter-calibrated ocean optics spectroradiometers (Ocean Optics Inc., Dunedin, FL, USA). The in situ $R_{rs}(\lambda)$ from LT and LE were measured with a hand-held ASD spectroradiometer (Analytical Spectral Device, Inc., Boulder, CO, U.S.A.), from 350 to 1050 nm at 1.4 nm intervals.

2.1.3. Absorption Coefficients

Surface water samples were collected and filtered immediately after the $R_{rs}(\lambda)$ measurements and analyzed on the same day in the laboratory. The particulate absorption coefficient was quantified utilizing the transmittance or transmittance/reflectance method of Tassan and Ferrari [22] along with the NASA Ocean Optics Protocols, Revision 4, Volume IV protocol [23]. Percent transmittance and reflectance were measured for each sample filter to calculate the particulate absorption spectrum. Filters were then bleached, and the transmittance and reflectance measured to calculate the absorption coefficients of non-algal particles. The phytoplankton absorption coefficients ($a_{ph}(\lambda)$) at each station were calculated by subtraction of non-algal particle absorption coefficients from total particle absorption coefficients. The Gaussian peak heights ($a_{Gau}(\lambda)$) were obtained from $a_{ph}(\lambda)$ using the Gaussian decomposition scheme described in Wang et al. [9], which used a least-square curve fitting technique in Matlab to obtain the $a_{Gau}(\lambda)$. These $a_{Gau}(\lambda)$ were used as ground truth to validate the outputs from $R_{rs}(\lambda)$ inversions.

For the MS dataset, a Perkin Elmer Lambda 850 Spectrophotometer (Perkin Elmer Inc., Waltham, MA, USA) was used to measure the absorption coefficient of phytoplankton, detrital matter,

and gelbstoff in the 380–750 nm range at 1 nm spectral resolution. Detailed information regarding the environmental characteristics and measurement methods can be found in Mishra et al. [18]. A Shimadzu UV-2401 Spectrophotometer was used for LT. More information about LT and details about water sample collection, measurement protocols, and processing methods can be found in Duan et al. [24] and Ma et al. [25]. Samples from LE were measured with a Perkin-Elmer Lambda 35 UV/Vis Dual-beam Spectrophotometer from 300–800 nm at 1 nm resolution as described in Mouw et al. [26].

2.1.4. Pigment Concentrations and Group Composition

Water samples for Chl-a and PC concentration from Lake Erie were filtered through 0.7 and 0.2 μm glass fiber filters (Whatman GF/F, 25-mm and 47-mm diameter), respectively. The Chl-a was estimated using a Turner Designs 10-AU Fluorometer in the laboratory following the NASA Ocean Optics Protocols, Revision 5, Volume V [23]. Following NASA protocols [27], filters for phycocyanin concentration determination were extracted in phosphate buffer (Ricca Chemical, Arlington, TX, U.S.A. pH 6.8) using two freeze-thaw cycles, followed by sonication. The concentration of PC was estimated from the relative fluorescence measured using a Turner Aquafluor fluorometer [21]. Phytoplankton populations for the Lake Erie stations in 2013 were also used in this study which were identified and counted using standard light microscopy [21].

2.2. Satellite Imagery

The Hyperspectral Imager for the Coastal Ocean (HICO) was the first space-borne hyperspectral imaging spectrometer designed to sample the coastal ocean. HICO covered selected coastal regions at 90 m spatial resolution with full spectral coverage (380 to 960 nm sampled at 5.73 nm intervals). HICO imagery of the same time frame as in situ measurements in Lake Erie in 2014 was downloaded from the Oregon State University website (<http://hico.coas.oregonstate.edu/>), and following the steps provided on the website the level 1B (L1B) imagery was atmospherically corrected to level 2 (L2) data using the online version of Tafkaa_6s model, followed by georectification. The HICO $R_{rs}(\lambda)$ data have about the same spectral resolution as the in situ measured reflectance (5.73 nm for HICO and 5 nm for original $R_{rs}(\lambda)$). These data were used as an example for MuPI application in hyperspectral satellite imagery.

The Moderate Resolution Imaging Spectroradiometer onboard the Aqua satellite (MODIS-Aqua) launched in 2002 is one of the contemporary satellite ocean color missions. The L1B imagery with 1 km spatial resolution was downloaded from the National Aeronautics and Space Administration (NASA) website (<https://ladsweb.nascom.nasa.gov/>). The L2 imagery (with 748 nm included in $R_{rs}(\lambda)$) from the same time frame as in situ measurements in Lake Erie in 2014 was obtained using the data processing L2gen from the SeaWiFS Data Analysis System (SeaDAS) software using the standard near infrared (NIR) scheme [28–30] for atmospheric correction. MODIS imagery was used as an example of MuPI application to multi-spectral satellite remote sensing data.

MEDium Resolution Imaging Spectrometer (MERIS) on board the European Space Agency's Envisat platform, was launched in 2002 and ended its mission in May 2012. The L3 seasonal composed imagery and L2 reduced resolution imagery (1 km spatial resolution) was obtained from NASA ocean color website (<https://oceancolor.gsfc.nasa.gov/>). Lacking coincidence with in situ measurements, the same day imagery of MODIS and MERIS on 3 September 2011 was used for the comparison of the retrieving results. The MERIS seasonal composed imagery in Lake Erie was used to obtain a general seasonal variation of Gaussian absorption coefficients.

2.3. The $a_{\text{Gau}}(\lambda)$ Estimation

2.3.1. MuPI Model

To obtain $a_{\text{Gau}}(\lambda)$ from remote sensing reflectance, a multi-pigment inversion method [9] was used. The corresponding functions used in this method are included in Table 1. In this method, the Gaussian scheme, which uses 13 Gaussian curves to reconstruct the spectrum of phytoplankton absorption coefficient, was incorporated into the relationship in which $R_{\text{rs}}(\lambda)$ is a function of total spectral absorption ($a(\lambda)$) and backscattering ($b_{\text{b}}(\lambda)$) coefficients [31,32]. With an $R_{\text{rs}}(\lambda)$ spectrum as the only input, the function was solved with a spectral optimization method which returns the values of unknowns ($a_{\text{Gau}}(\lambda)$, absorption of non-algal particles and gelbstoff: $a_{\text{dg}}(\lambda)$, and backscattering coefficient of particles, $b_{\text{bp}}(\lambda)$), that minimizes the difference between the estimated and input $R_{\text{rs}}(\lambda)$ spectra. A summarized flowchart of the method is shown in Figure 2. The parameters used for the 13 Gaussian curves in this study are shown in Table 2, which includes the peak locations, widths and empirical relationships between the peak heights.

Table 1. Summary of the functions and symbols used in multi-pigment inversion model (MuPI).

Index	Function	Description	References
1	$R_{\text{rs}}(\lambda) = F\left(\frac{b_{\text{b}}(\lambda)}{a(\lambda) + b_{\text{b}}(\lambda)}\right) = \frac{0.52(G_1 u + G_2 u^2)}{1 - 1.7(G_1 u + G_2 u^2)}$ with $u = \frac{b_{\text{b}}(\lambda)}{a(\lambda) + b_{\text{b}}(\lambda)}$	Remote sensing reflectance as a function of $a(\lambda)$ and $b_{\text{b}}(\lambda)$ $G_1 = 0.089 \text{ sr}^{-1}$; $G_2 = 0.125 \text{ sr}^{-1}$	[31–35]
2	$a(\lambda) = a_{\text{ph}}(\lambda) + a_{\text{dg}}(\lambda) + a_{\text{w}}(\lambda)$ $b_{\text{b}}(\lambda) = b_{\text{bw}}(\lambda) + b_{\text{bp}}(\lambda)$	Absorption and backscattering coefficients as the total of their components	
	$a_{\text{ph}}(\lambda)$: phytoplankton absorption coefficient; $a_{\text{dg}}(\lambda)$: absorption coefficient of non-algal particles and gelbstoff; $a_{\text{w}}(\lambda)$: absorption coefficients of pure seawaters; $b_{\text{bp}}(\lambda)$: beam attenuation coefficients of suspended particles; $b_{\text{bw}}(\lambda)$: beam attenuation coefficients of water molecules		
3	$b_{\text{bp}}(\lambda) = b_{\text{bp}}\left(\frac{\lambda_0}{\lambda}\right)^\eta$ with $\eta = 2.0\left(1 - 1.2 \exp\left(-0.9 \frac{r_{\text{rs}}(443)}{r_{\text{rs}}(55x)}\right)\right)$	λ_0 : 440 nm	[33]
4	$a_{\text{ph}}(\lambda) = \sum_{i=1}^n a_{\text{Gau}}(\lambda_i) \exp\left[-0.5\left(\frac{\lambda - \lambda_i}{\sigma_i}\right)^2\right]$	σ_i : width of the i th Gaussian curve (FWHM = $2.35 \times \sigma_i$, FWHM as full width at half maximum) $a_{\text{Gau}}(\lambda_i)$: the peak height of peak centered at λ_i	[10]
5	$a_{\text{dg}}(\lambda) = a_{\text{dg}}(\lambda_0) \exp(-S(\lambda - \lambda_0))$	$\lambda_0 = 440 \text{ nm}$; S : spectral slope of $a_{\text{dg}}(\lambda)$	[36]
6	$\delta = \sqrt{\frac{\frac{1}{N\lambda} \sum_{i=1}^{N\lambda} (\hat{R}_{\text{rs}}(\lambda_i) - R_{\text{rs}}(\lambda_i))^2}{\frac{1}{N\lambda} \sum_{i=1}^{N\lambda} R_{\text{rs}}(\lambda_i)}}$	Cost function for spectral optimization $\hat{R}_{\text{rs}}(\lambda)$ and $R_{\text{rs}}(\lambda)$: Estimated and measured remote sensing reflectance	[36–39]

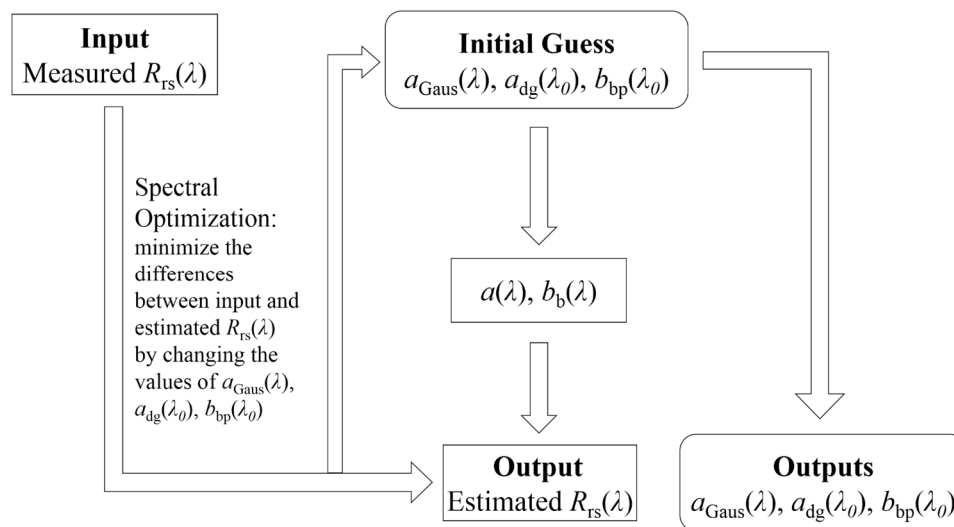


Figure 2. Flowchart of the inversion method. Utilizing satellite or in situ measured remote sensing reflectance ($R_{rs}(\lambda)$), a spectral optimization method is used to minimize the differences between estimated and measured $R_{rs}(\lambda)$ spectra, output values for Gaussian curves ($a_{Gau}(\lambda)$), non-algal particles and gelbstoff ($a_{dg}(\lambda)$) and particulate attenuation coefficients (c_p) are obtained.

Table 2. The Gaussian curve peak locations, widths ($\sigma = \text{FWHM}/2.35$) and the corresponding power-law relationships among the peak heights. The peak heights of the Gaussian curves located at 386.6, 414, 451.7, 484, 515.6, and 677 nm can be estimated from the peak height of the Gaussian curve centered at 435 nm (annotated as x_1), those of 548.8, 584.4, 653, and 693.5 nm can be estimated from the peak height at 617.6 nm (x_2).

Gaussian Bands and Pigment Relationships					
Peaks	Pigment	Peak (nm)	Width (nm)	Peak Height	R ²
1	Chl-a	386.6	18.8	$y = 1.52x_1$	0.99
2	Chl-a	414	10.7	$y = 0.97x_1$	0.998
3	Chl-a	435	12	x_1	1
4	Chl-c	451.7	18.5	$y = 0.90x_1$	0.995
5	Carot	484	19.6	$y = 0.95x_1$	0.99
6	Carot	515.6	18	$y = 0.53x_1$	0.99
7	PE	548.8	15.7	$y = 0.76x_2^{0.92}$	0.99
8	Chl-c	584.4	17	$y = 90x_2^{0.94}$	0.997
9	PC	617.6	16	x_2	1
10	Chl-c	636	11.6	$y = 0.35x_2^{1.1}$	0.99
11	Chl-b	653	14	$y = 0.82x_2^{0.87}$	0.99
12	Chl-a	677	10.6	$y = 0.69x_1$	0.99
13	others	693.5	20	$y = 0.37x_2^{0.92}$	0.99

2.3.2. Gaussian Parameters

As with other semi-analytical algorithms (e.g., HOPE [38]; GSM [40], GIOP [36]), $a_{Gau}(\lambda)$ in MuPI were retrieved using a spectral optimization method. The Gaussian scheme used in MuPI plays a critical role in $a_{Gau}(\lambda)$ estimation, and the Gaussian peak heights, locations, and widths are very important factors in the Gaussian scheme. To determine the peak locations and widths of the Gaussian curves, the peaks and troughs of $a_{ph}(\lambda)$ spectra were used as the initial inputs in the optimization process. As shown in Table 2 and Figure 3, a total of 13 Gaussian curves, corresponding to peaks or shoulders of measured $a_{ph}(\lambda)$ spectra, were used to represent the absorption of phytoplankton pigments at different wavelengths: chlorophyll *a*: 386.6, 414, 435, 677, and 693.5 nm; chlorophyll *b*: 653 nm; chlorophyll *c*: 451.7, 584.4, and 636 nm; carotenoids: 484 and 515.6 nm; phycoerythrin:

548.8 nm; and phycocyanin: 617.6 nm. These peak locations and widths (the second and third columns of Table 2) were potentially influenced by pigment composition. Upon further analysis, we found that using fixed values for peak locations and widths in Table 2 cause no more than 5% differences in $a_{ph}(\lambda)$ estimation versus when these peak locations and widths were set as free variables. Comparatively, the peak height of Gaussian curves influenced by pigment concentrations play a critical role in $a_{ph}(\lambda)$ estimation. Thus, in the MuPI method, the peak locations and widths presented in Table 2 were fixed as constants, and the peak heights of these 13 Gaussian curves, containing bio-optical information of phytoplankton pigments, are the parameters to be obtained from remote sensing reflectance.

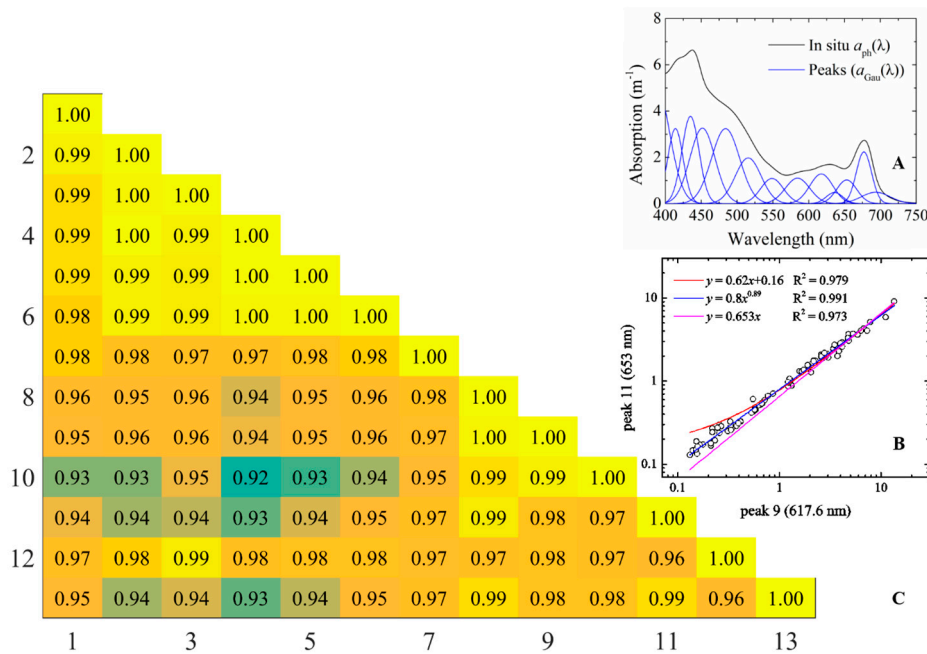


Figure 3. (A) Example of in situ $a_{ph}(\lambda)$ and corresponding decomposed $a_{Gau}(\lambda)$; (B) The scatter plot shows different functions between peak magnitudes ($a_{Gau}(\lambda)$) and the corresponding R^2 ; (C) Correlation matrix shows the co-variances among peaks (R^2).

It is impractical to retrieve 13 peaks simultaneously from an $R_{rs}(\lambda)$ spectrum via spectral optimization because more variables in the function usually means much higher uncertainties in the outputs. In determining the number of independent $a_{Gau}(\lambda)$ to be retrieved from the MuPI model, a series of tests were conducted, and the mean, median, maximum and minimum unbiased absolute percentage difference (UAPDs, Equation (1)) were compared for different datasets when the number of independent $a_{Gau}(\lambda)$ vary among 13, 5 (Peak 2, 5, 7, 9 and 12), 3 (Peak 3, 5 and 9) and 2 (Peak 3 and 9). The combinations of independent $a_{Gau}(\lambda)$ were determined based on the highest correlation coefficients (R^2) with other $a_{Gau}(\lambda)$. As expected, an obvious decrease in the percentage differences are noticed when the number of independent $a_{Gau}(\lambda)$ are reduced from 13 to 2 for all three in situ datasets, as shown in Table 3, although the retrieval accuracy varies from dataset to dataset because of the different contributions of phytoplankton to the total absorption ($100\% \times a_{ph}(\lambda)/a(\lambda)$, Figure 4). Thus the height of two peaks, here $a_{Gau}(435)$ and $a_{Gau}(617.6)$, instead of 13, were retrieved as free variables from an $R_{rs}(\lambda)$ spectrum to achieve the highest retrieval accuracy from MuPI. This also controls the number of unknowns in the model to maximize its application to different satellite remote sensing data and improve computation efficiencies.

$$UAPD = \frac{|\hat{S} - S|}{0.5(\hat{S} + S)} \times 100\% \tag{1}$$

where \hat{S} is the estimated value and S is the measured value.

Table 3. The mean (Mea.), median (Med.), maximum (Max.) and Minimum (Min.) UAPD of different dataset with different number of unknowns (N) to be retrieved from MuPI.

Unknowns (N)	Datasets	UAPD (%)			
		Mea.	Med.	Max.	Min.
13	All	47	43	73	24
5	All	37	38	46	27
3	All	33	34	40	25
2	All	32	34	38	24
13	MS	38	41	81	13
5	MS	29	28	50	15
3	MS	25	29	35	15
2	MS	26	28	37	16
13	LT	42	36	71	23
5	LT	37	38	47	25
3	LT	35	34	47	24
2	LT	32	31	49	22
13	LE	64	60	111	39
5	LE	45	45	56	36
3	LE	41	40	49	33
2	LE	39	39	50	33
13	LE-2014	62	65	108	30
5	LE-2014	31	28	45	17
3	LE-2014	27	28	35	16
2	LE-2014	22	21	33	16

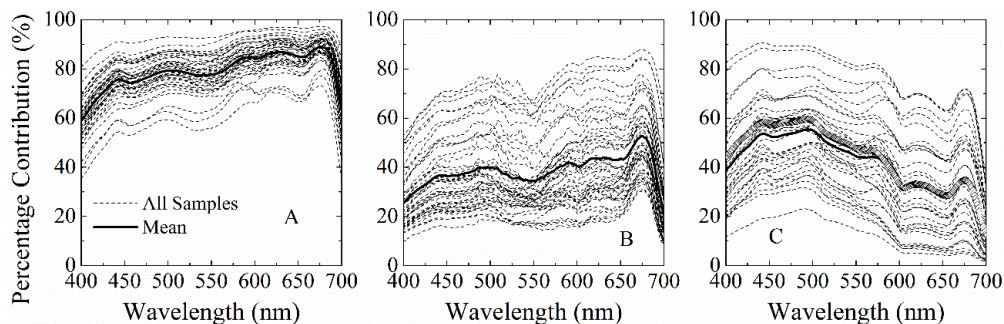


Figure 4. Percent contribution of phytoplankton absorption coefficients ($a_{ph}(\lambda)$) to the total absorption coefficient ($a(\lambda) = a_w(\lambda) + a_{dg}(\lambda) + a_{ph}(\lambda)$), with $a_w(\lambda)$ and $a_{dg}(\lambda)$ as the absorption coefficients of pure seawater and non-algal particles and gelbstoff) for three datasets (all the samples and their mean values): (A) Mississippi ponds (MS); (B) Lake Taihu (LT); and (C) Lake Erie (LE).

Once $a_{Gau}(435)$ and $a_{Gau}(617.6)$ were obtained from $R_{rs}(\lambda)$, the other peaks could be estimated from these two values through a set of relationships shown in Table 2. Whether these relationships can represent data from different regions over different seasons presents uncertainty and a potential error source for $a_{Gau}(\lambda)$ retrieval from MuPI. In our analysis of three datasets, we found that the empirical relationships among $a_{Gau}(\lambda)$ to be very stable. The data from different regions over different seasons follow the trend predicted by the regression line based on one dataset. Figure 5 shows two examples in which all the data points from different datasets scattered tightly around the regression lines.

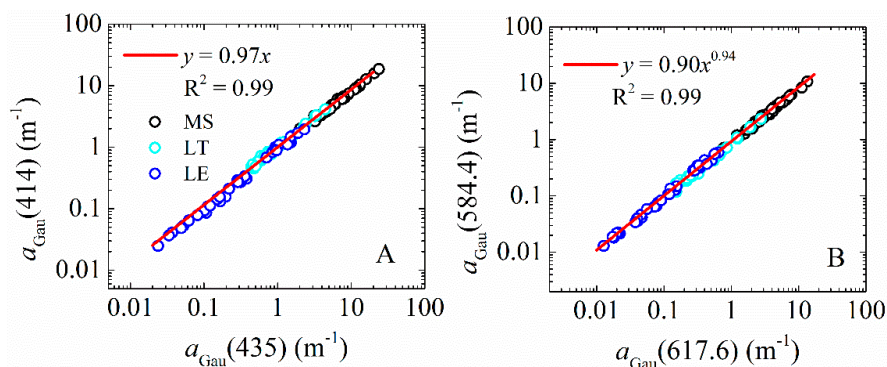


Figure 5. Example of empirical relationships among $a_{\text{Gau}}(\lambda)$ for three different datasets with MS in black, LT in light blue and LE in dark blue: (A) linear relationship between $a_{\text{Gau}}(414)$ and $a_{\text{Gau}}(435)$; and (B) power-law relationship between $a_{\text{Gau}}(584.4)$ and $a_{\text{Gau}}(617.6)$.

In contrast with the parameters determined in Wang et al. [9], to reduce potential errors updates were made in this study regarding the independent peak heights and their empirical relationships with other peaks. These modifications were made for the following reasons: (1) when further checking the co-variances among $a_{\text{Gau}}(\lambda)$ from the MS and LT datasets, it was found that, sometimes, power-law relationships among the peak heights were more robust and representative than the previously adopted linear relationships (Figure 3); and (2) to make the retrievals more meaningful, $a_{\text{Gau}}(435)$ and $a_{\text{Gau}}(617.6)$ instead of $a_{\text{Gau}}(515.6)$ and $a_{\text{Gau}}(584.4)$ were used as the two independent variables. This change was made because $a_{\text{Gau}}(435)$ showed a robust relationship with chlorophyll a concentration, and $a_{\text{Gau}}(617.6)$ with phycocyanin. Further, their absorption coefficients or concentrations directly retrieved from $R_{\text{rs}}(\lambda)$ can be more widely used in the estimation of phytoplankton biomass, productivity and cyanobacteria bloom detection and monitoring. Further, because of the high co-variation among the peak heights ($R^2 > 0.92$), the selection of different peaks as free variables caused no more than 10% difference in the retrieved results.

2.4. $a_{\text{Gau}}(\lambda)$ Spectra Shape

In exploring the $a_{\text{Gau}}(\lambda)$ application in HABs detection, a spectral shape analysis was conducted, in which $a_{\text{Gau}}(435)$, $a_{\text{Gau}}(584.4)$, and $a_{\text{Gau}}(617.6)$ were normalized by their respective root of sum of squares,

$$na_{\text{Gau}}(\lambda_i) = \frac{a_{\text{Gau}}(\lambda_i)}{\sqrt{\sum_{i=1}^N a_{\text{Gau}}(\lambda_i)^2}} \quad (2)$$

where the index N represents the total number of wavelengths, and λ_i corresponds to the wavelengths of 435, 584.4 and 617.6 nm. The $na_{\text{Gau}}(\lambda)$ spectra vary over the range between 0 and 1, while it retains the “shapes” pertaining to the original $a_{\text{Gau}}(\lambda)$ spectra, i.e., the band ratios of $na_{\text{Gau}}(\lambda)$ retain the same as $a_{\text{Gau}}(\lambda)$.

2.5. Multi-Spectral $R_{\text{rs}}(\lambda)$

To characterize the model performance with multi-spectral $R_{\text{rs}}(\lambda)$ data as inputs, a set of different spectral band configurations were used (Table 4). This included the existing sensors of Ocean and Land Color Instrument (OLCI), MERIS, MODIS, Visible Infrared Imaging Radiometer Suite (VIIRS), Sentinel-2 Multispectral Instrument (MSI), Landsat-8 Operational Land Imager (OLI) and an All-band configuration that combined all of the existing spectral bands of the different sensors. The inclusion of the All-band configuration was intended to test the sensitivity of the algorithm to specific spectral bands of the existing sensors. The $R_{\text{rs}}(\lambda)$ of these multiple spectral bands were obtained

by applying their spectral response functions (RSF) (https://oceancolor.gsfc.nasa.gov/docs/rsr/rsr_tables/, https://earth.esa.int/web/sentinel/user-guides/sentinel-2-msi/document-library/-/asset_publisher/Wk0TKajiISaR/content/sentinel-2a-spectral-responses) to the in situ hyperspectral data.

Table 4. The multi-spectral bands used in this study: a composed All-band, OLCI, MERIS, MODIS, VIIRS, MSI and OLI bands.

Index	All-Band	OLCI	MERIS	MODIS	VIIRS	MSI	OLI
1	400	400					
2	412	413	413	412	410		
3	443	443	443	443	443	444	443
4	490	490	490	488	486	497	483
5	510	510	510				
6	530			531			
7	555	560	560	547	551	560	563
8	620	620	620				
9	645			645			
10	655						655
11	665	665	665	667		665	
12	675	674		678	671		
13	681	681	681				
14	709	709	709			704	
15	745	754	754	748	745	740	

3. Results

3.1. $a_{\text{Gau}}(\lambda)$ from Multi-Spectral $R_{\text{rs}}(\lambda)$

The MuPI performance was validated for multi-spectral $R_{\text{rs}}(\lambda)$ at six different band configurations. Table 5 shows the mean UAPD of 13 $a_{\text{Gau}}(\lambda)$ for all three in situ datasets with the spectral bands of different sensors, respectively. Table 6 provides detailed information for LE 2014 data regarding the variation of the mean UAPD in the $a_{\text{Gau}}(\lambda)$ retrieval with $R_{\text{rs}}(\lambda)$ at different spectral configurations. OLCI and MERIS produced similar mean UAPD, which is around 35% for all three datasets and 28% for the LE 2014 data. Compared with MODIS, VIIRS showed slightly higher mean UAPD (All data: VIIRS: 36%, MODIS: 34%; LE 2014: VIIRS: $\leq 40\%$, MODIS: $\leq 37\%$), which is potentially caused by the lack of a spectral band around 665 nm in VIIRS. MSI and OLI produced the highest uncertainties for $a_{\text{Gau}}(\lambda)$ at wavelength longer than 550 nm, but, surprisingly, a $\leq 50\%$ mean UAPD was achieved for the four spectral bands of the Landsat-8 OLI sensor with the data used here, which demonstrates the potential of applying MuPI to these high spatial resolution satellite remote sensing data.

By removing and adding specific bands such as 645 and 748 nm for MODIS, and 754 nm in MERIS, differences in the $a_{\text{Gau}}(\lambda)$ accuracy were observed. A 10% increase in mean UAPD was observed when the 748 nm band was removed from MODIS, and a 3% decrease in the mean UAPD when adding the 745 nm band to MERIS. However, with the existence of the 748 nm band, the adding and removing of the 645 nm band did not show a large influence ($< 3\%$ mean UAPD variation). In addition, due to the existence of the 746 nm band in VIIRS, reasonable results were obtained in $a_{\text{Gau}}(\lambda)$ retrievals.

Such a result suggests, at least for this dataset of bloom waters, with MuPI there is little impact on the retrieval of $a_{\text{Gau}}(\lambda)$ when hyperspectral $R_{\text{rs}}(\lambda)$ is degraded to multiple-spectral measurements such as MERIS and MODIS-like sensors. This is consistent with conclusions from previous studies that $R_{\text{rs}}(\lambda)$ data do not need to be as fine as 1 nm in spectral resolution to obtain reliable retrievals of inherent optical properties [41–43].

When taking a closer look at the results from the LE 2014 data (Table 6, Figure 6), a mean UAPD of $\leq 35\%$ was achieved for most of $a_{\text{Gau}}(\lambda)$ from $R_{\text{rs}}(\lambda)$ with MERIS, OLCI, and MODIS bands. The relatively low contributions of phytoplankton absorption coefficients at longer wavelengths was the main reason for the relatively larger uncertainties (e.g., $a_{\text{Gau}}(\lambda)$ at 653 nm: $\sim 36\%$ for MODIS

and MERIS). In addition, the lack of enough bands between 570 and 660 nm (only 620 nm for MERIS and 645 nm for MODIS) made it difficult to obtain more accurate retrievals.

Table 5. The mean (Mea.), median (Med.), maximum (Max.), and minimum (Min.) of unbiased absolute percentage differences (UAPD, %) of $a_{\text{Gau}}(\lambda)$ estimated from $R_{\text{rs}}(\lambda)$ with the spectral bands of different sensors for the MS, LT and LE datasets. MERIS+745: MERIS with the 745 nm band; MODIS-645/748: MODIS bands without 645 or 748 nm band.

Bands	UAPD (%)			
	Mea.	Med.	Max.	Min.
ALL-band	30	32	36	23
OLCI	35	36	41	28
MERIS + 754	32	33	39	27
MERIS	35	36	41	28
MODIS	34	33	40	30
MODIS-645	34	33	43	29
MODIS-748	45	45	50	40
VIIRS	36	34	48	31
MSI	35	34	45	32
OLI	48	46	63	42

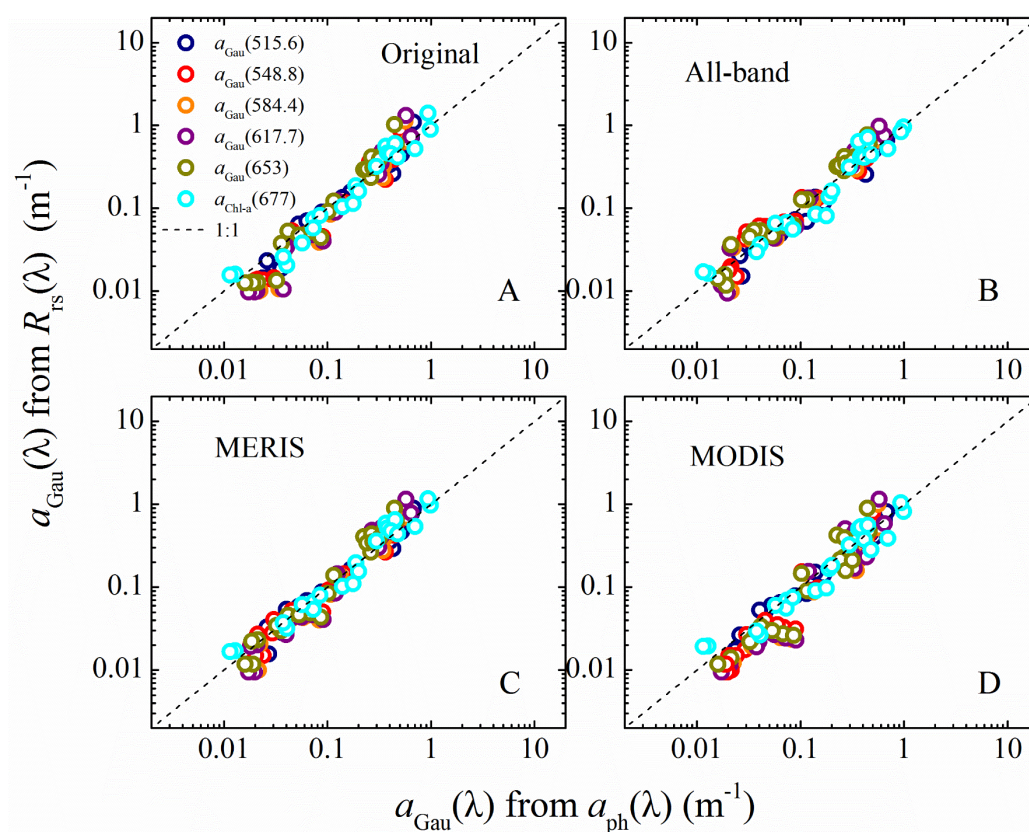


Figure 6. For LE 2014: $a_{\text{Gau}}(\lambda)$ from Gaussian decomposition of measured $a_{\text{ph}}(\lambda)$ versus $a_{\text{Gau}}(\lambda)$ retrieved from: $R_{\text{rs}}(\lambda)$ with original hyperspectral bands (A); the combined all sensor bands (B); MERIS bands (C); and MODIS bands (D).

Table 6. For LE 2014: The unbiased absolute percentage differences (UAPD, %) of $a_{\text{Gau}}(\lambda)$ estimated from $R_{\text{rs}}(\lambda)$ with the original hyperspectral bands and those at different spectral configuration. P1–P13: 13 Gaussian peaks. MERIS+745: MERIS with the 745 nm band; MODIS-645/748: MODIS bands without 645 or 748 nm band.

UAPD (%)	P1	P2	P3	P4	P5	P6	P7	P8	P9	P10	P11	P12	P13
ALL-band	29	23	23	19	20	20	14	22	19	18	36	21	18
OLCI	29	23	23	19	19	21	17	21	21	22	36	24	22
MERIS + 754	26	21	20	18	20	22	16	23	23	23	37	26	21
MERIS	27	21	22	17	19	21	17	23	23	24	37	25	22
MODIS	33	27	28	23	21	22	17	22	21	18	35	24	29
MODIS-645	32	26	24	24	19	22	17	18	17	17	31	24	27
MODIS-748	45	39	40	35	31	30	27	29	25	28	32	29	40
VIIRS	33	29	28	25	25	25	24	29	26	24	40	27	28
MSI	30	26	27	21	27	27	25	31	29	28	46	33	25
OLI	31	30	32	27	33	30	26	33	35	41	46	43	29

3.2. Chl-a and PC from $a_{\text{Gau}}(\lambda)$ for Lake Erie

As one of the most widely used indices for phytoplankton, concentration and light absorption coefficients of chlorophyll *a* (Chl-*a*) have been the focus of many studies [33,44–47]. Previous studies [9,10,17] have indicated that some Gaussian peak heights ($a_{\text{Gau}}(\lambda)$) obtained from $a_{\text{ph}}(\lambda)$, such as peaks around 390, 413, 435 and 675 nm, represent the absorption properties of chlorophyll *a*. Phycocyanin (PC), the bio-marker of the blue-green cyanobacteria, is an important indicator for cyanobacteria biomass [6,7,48]. Based on the regression analysis between $a_{\text{Gau}}(\lambda)$, Chl-*a* and PC from the LE dataset, the Gaussian peaks at 386.6, 414, 435 and 677 nm showed high correlation coefficients with Chl-*a* concentration with R^2 of 0.95, 0.96, 0.97, and 0.98, respectively; and the Gaussian peaks at 617.6 nm showed a 0.93 correlation coefficient with PC concentration. The empirical relationships for Chl-*a* and PC estimation from $a_{\text{Gau}}(677)$ and $a_{\text{Gau}}(617.6)$ were obtained, as shown in Figure 7. The above results further highlight the values of using $a_{\text{Gau}}(\lambda)$ as a proxy to obtain pigment absorption or concentration, which may be used to map cyanobacteria bloom waters from ocean color imagery.

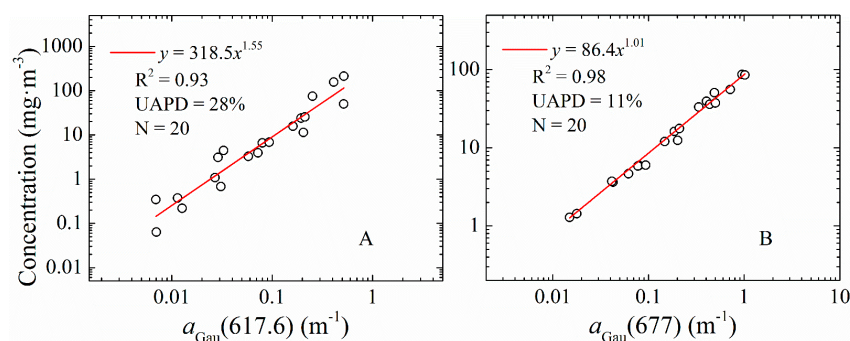


Figure 7. Co-variation between the measured: phycocyanin (A); and chlorophyll *a* (B) concentrations, and the Gaussian peak heights ($a_{\text{Gau}}(\lambda)$) centered at 677 and 617.6 nm; and the corresponding relationship, R^2 -square the mean UAPD, and the sample number (N).

3.3. $a_{\text{Gau}}(\lambda)$ versus Group Composition

In analysis of the $a_{\text{Gau}}(\lambda)$ and cell counts from LE 2013 measurements, we found the spectral shapes formed by $a_{\text{Gau}}(435)$, $a_{\text{Gau}}(584.4)$, and $a_{\text{Gau}}(617.6)$ vary with the composition of cyanobacteria species at different locations in western basin of Lake Erie, as shown in Figure 8. As shown in Table 2, the $a_{\text{Gau}}(435)$, $a_{\text{Gau}}(584.4)$, and $a_{\text{Gau}}(617.6)$ contain absorption properties of pigments Chl-*a*, PE, and PC, respectively. The variation of pigment compositions, especially the different intracellular Chl-*a*:PE:PC ratios of the cyanobacteria at the species level is the main reason of the spectral shape variation. This can potentially be used in separating different cyanobacteria species in the bloom waters.

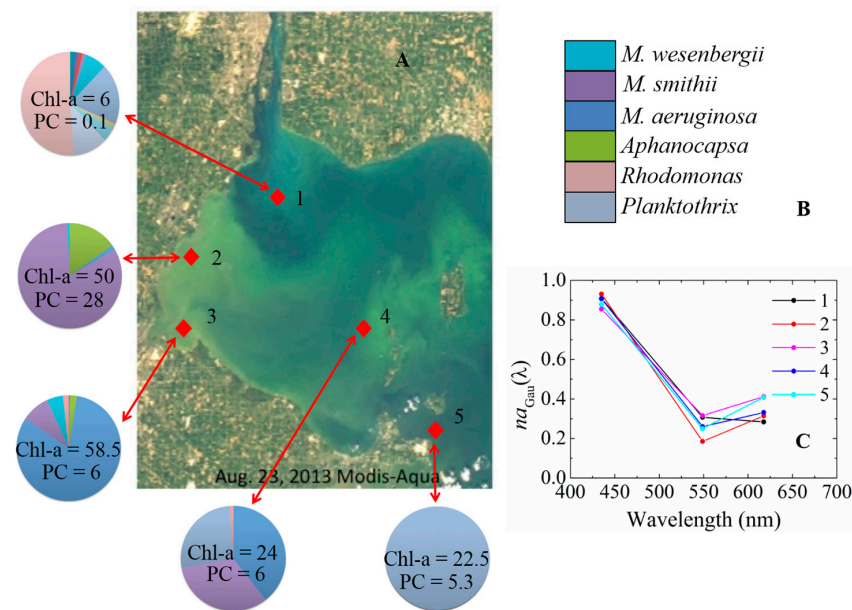


Figure 8. The different $a_{Gau}(\lambda)$ shapes corresponding to different locations and different species composition: (A) MODIS-Aqua true color image in western basin of Lake Erie on 23 August 2013; (B) cyanobacteria species composition in different locations of Lake Erie for August 2013, with the numbers for PC and Chl-a as the concentrations for these two pigments ($\text{mg}\cdot\text{m}^{-3}$), and *M. as Microcystis*; and (C) the different spectral shapes of $a_{Gau}(\lambda)$ corresponding to different species composition in different locations in western basin of Lake Erie.

3.4. Pigment and $a_{Gau}(\lambda)$ Retrieval from Satellite Imagery

3.4.1. Validation of Satellite Remote Sensing Data

Before applying MuPI to satellite imagery for $a_{Gau}(\lambda)$ retrieval, the $R_{rs}(\lambda)$ data from HICO and MODIS imagery for Lake Erie were first assessed with in situ measurements.

Three criteria were employed to find matchups: (1) Within ± 2 days; (2) median of a 3×3 box, with no masks of land or clouds; and (3) coefficients of variance smaller than 0.15. The spectral response function was applied to the in situ $R_{rs}(\lambda)$ spectrum before comparing it with satellite data. Most of the bands have a mean difference within 35% for $R_{rs}(\lambda)$ for both sensors. At the shorter wavelengths (≤ 500 nm for HICO, and 412 and 443 nm for MODIS), the mean UAPD was as high as 65% and some satellite $R_{rs}(\lambda)$ were even negative values because of the poor atmospheric correction for optically complex inland waters [49,50]. For MODIS, the mean UAPD of $R_{rs}(\lambda)$ at 748 nm was 52%, possibly due to low $R_{rs}(\lambda)$ values at this band and the influence from residual and likely uncorrected oxygen and water vapor absorption in the atmosphere.

Since the main focus of this work is the retrieval of $a_{Gau}(\lambda)$ from $R_{rs}(\lambda)$, we took advantage of the $a_{Gau}(\lambda)$ information from the $R_{rs}(\lambda)$ spectrum in the longer wavelengths (>500 nm for HICO and >480 nm for MODIS) in the model application, to minimize the influence of ineffective atmospheric correction on the shorter bands of satellite $R_{rs}(\lambda)$. To validate this adjustment, MuPI was first applied to in situ measured $R_{rs}(\lambda)$ with HICO and MODIS bands but without data from the shorter wavelengths (≤ 500 nm for HICO and 412 and 443 nm for MODIS). The retrieved $a_{Gau}(\lambda)$ from such $R_{rs}(\lambda)$ agreed quite well with $a_{Gau}(\lambda)$ from in situ $a_{ph}(\lambda)$ decomposition, with the mean UAPD $\leq 38\%$ for HICO, and $\leq 48\%$ for MODIS bands (Table 7). The estimated Chl-a concentration has a mean UAPD of 28% which is better than the results from the standard products [45] and those shown in Pan et al. [8], and the mean UAPD for the estimated PC concentration is 32% which is consistent or even better than that reported in the literature [6,7,48]. Figure 9 presents one match-up of satellite and in situ $R_{rs}(\lambda)$ spectra and the estimated $R_{rs}(\lambda)$ spectra from MuPI for both HICO and MODIS, as well as, the 13

derived $a_{\text{Gau}}(\lambda)$ from the corresponding spectrum. The $a_{\text{Gau}}(\lambda)$ from the corresponding satellite and in situ match-up data showed the same trend.

Table 7. The mean (Mea.) and median (Med.) of unbiased absolute percentage differences of $a_{\text{Gau}}(\lambda)$ estimated from $R_{\text{rs}}(\lambda)$ of HICO and MODIS satellite imagery.

Peaks	$a_{\text{Gau}}(\lambda)$	HICO		MODIS	
		Mea.	Med.	Mea.	Med.
1	386.6	27	26	28	27
2	414	21	20	23	19
3	435	19	18	20	16
4	451.7	17	15	18	15
5	484	18	16	17	13
6	515.6	19	14	19	14
7	548.8	24	23	33	32
8	584.4	29	26	44	45
9	617.6	34	28	45	37
10	636	37	39	48	53
11	653	32	25	34	29
12	677	24	25	26	27
13	693.5	54	48	78	75

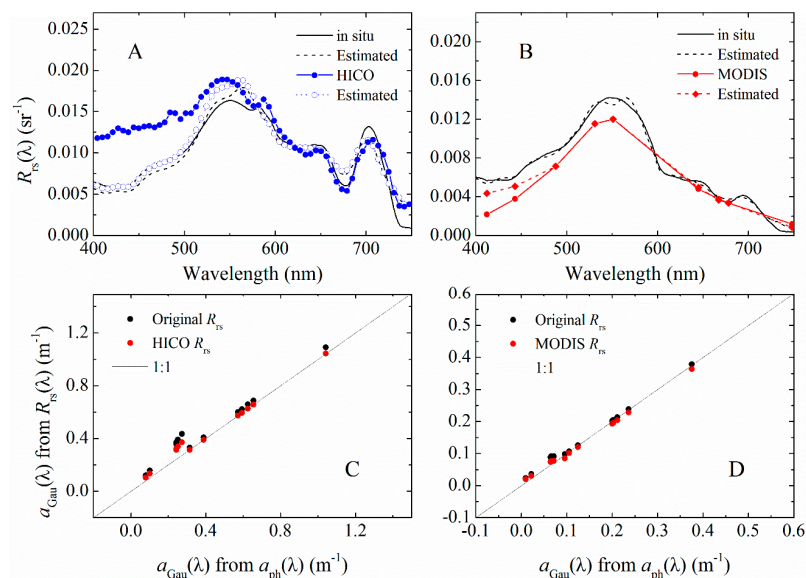


Figure 9. (A) Example spectra of in situ and HICO measured ($R_{\text{rs}}(\lambda)$), and their corresponding estimated spectra from MuPI; (B) example spectra of in situ and MODIS measured ($R_{\text{rs}}(\lambda)$), and their corresponding estimated spectra from MuPI; and (C,D) the 13 $a_{\text{Gau}}(\lambda)$ derived from in situ, HICO and MODIS $R_{\text{rs}}(\lambda)$ were plotting against the $a_{\text{Gau}}(\lambda)$ from decomposition of in situ measured $a_{\text{ph}}(\lambda)$.

3.4.2. Chl-a and PC from HICO and MODIS Imagery

We further explored the $a_{\text{Gau}}(\lambda)$ distribution obtained from HICO and MODIS of the western basin of Lake Erie. The MuPI scheme was applied without using $R_{\text{rs}}(\lambda)$ data at the shorter spectral bands (those <500 nm for HICO and <480 nm for MODIS). The power-law relationships obtained in Section 3.4 between $a_{\text{Gau}}(677)$ and Chl-a, and $a_{\text{Gau}}(617.6)$ and PC concentration were applied to the obtained $a_{\text{Gau}}(\lambda)$ images to map the spatial distribution of Chl-a and PC concentration (Figure 10).

The estimated spatial distributions of Chl-a and PC from MODIS showed a similar pattern with those from HICO. A two-day difference exists between the HICO (15 August 2014) and MODIS (13 August 2014) observations due to the availability of satellite image, which explains the slightly different locations of the high biomass patches as shown in Figure 9. The non-value patches with in HICO image was a result of the poor $R_{\text{rs}}(\lambda)$ quality due to the failing of the atmospheric correction.

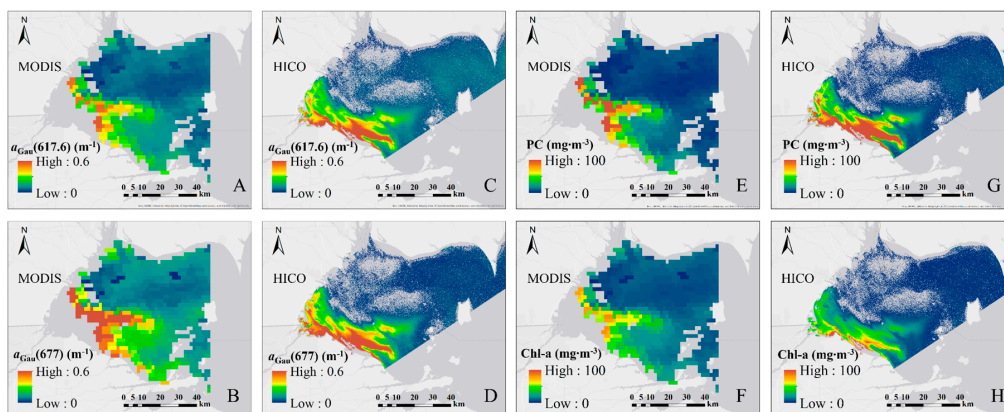


Figure 10. The spatial distributions of $a_{\text{Gau}}(\lambda)$ (m^{-1}) centered at 617.6 and 677 nm in western basin of Lake Erie from: MODIS (13 August 2014, 17:50:00 UTC) (A,B), and HICO (15 August 2014, 21:56:18 UTC) (C,D) remote sensing imagery; the distribution of phycocyanin (PC) and chlorophyll *a* concentrations (Chl-*a*) derived from MODIS (E,F) and HICO imageries (G,H).

3.4.3. MODIS and MERIS Imagery over Lake Erie

MERIS imagery did not coincide with the in situ observations used in this study. Thus, to provide an example of MERIS imagery, $a_{\text{Gau}}(\lambda)$ were retrieved from MERIS imagery on 3 September 2011. MODIS imagery of this day was also considered.

As shown in Figure 11, similar patterns for high and low absorption patches were noticed for the two sensors, but the two images showed different magnitudes of $a_{\text{Gau}}(\lambda)$. In further analysis of the $R_{\text{rs}}(\lambda)$ from these two sensors at the same locations, good agreement was observed, as shown in Figure 12. The existence of 709 nm band in MERIS could be the main reason for the differences in the retrieval results. The patch of high values in the MERIS (marked with solid star: ★) imagery was not included in MODIS because the standard L1B to L2 processing in SeaDAS masked those pixels as clouds. Further validation and evaluation of MERIS and MODIS $R_{\text{rs}}(\lambda)$ with in situ data are necessary to have a better understanding of the differences in the results, which is beyond the scope of the current work.

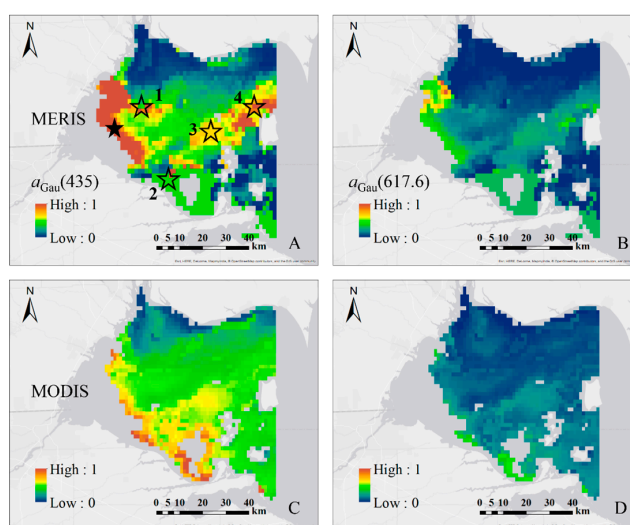


Figure 11. The spatial distributions of $a_{\text{Gau}}(435)$ and $a_{\text{Gau}}(617.6)$ in western basin of Lake Erie estimated from: MERIS (3 September 2011, 15:43:50 UTC) (A,B); and MODIS (3 September 2011, 18:55:00 UTC) (C,D) remote sensing reflectance imagery. The stars on (A) shows the locations of the mismatch between MERIS and MODIS imagery.

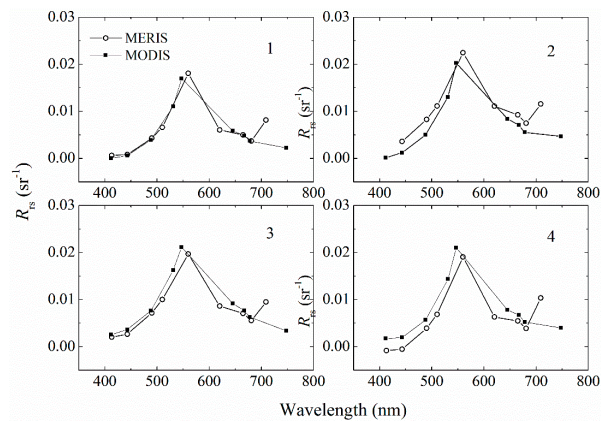


Figure 12. The $R_{rs}(\lambda)$ from MODIS and MERIS imagery at the same locations. The 1, 2, 3, and 4 correspond to the locations marked in Figure 11A.

3.4.4. The Seasonal Variation of $a_{Gau}(\lambda)$ from MERIS Imagery

We further explored the seasonal variation of $a_{Gau}(435)$ and $a_{Gau}(617.6)$ in Lake Erie retrieved from MERIS seasonal composed 4 km $R_{rs}(\lambda)$ imagery (Figure 13). The differences in the spatial distribution of high pigment absorption patches in Spring, Summer, Autumn and Winter were captured. An obvious summer bloom in western basin of Lake Erie is shown in the figure.

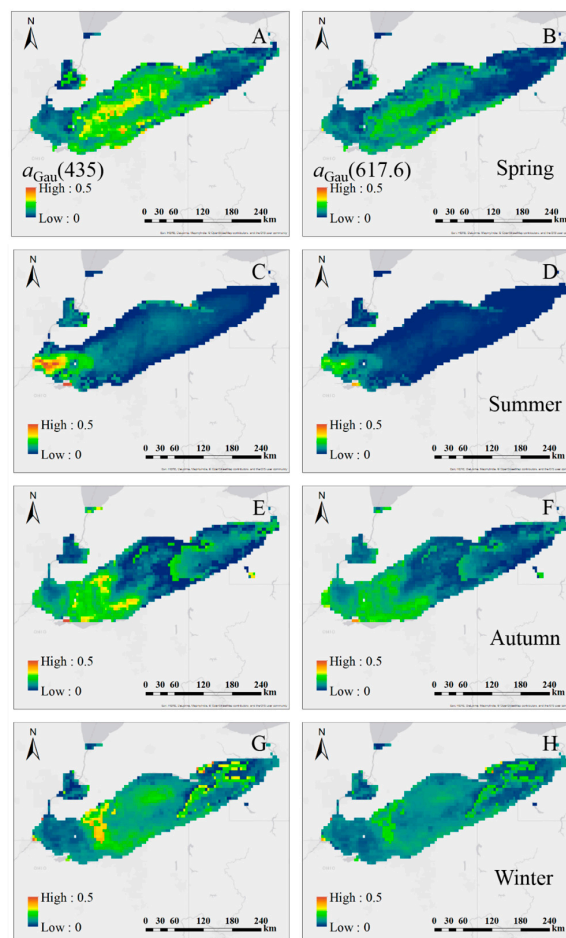


Figure 13. The distribution of $a_{Gau}(435)$ and $a_{Gau}(617.6)$ in Lake Erie in: spring (A,B); summer (C,D); autumn (E,F); and winter (G,H).

4. Discussion

4.1. Spectral Requirements for $a_{\text{Gau}}(\lambda)$ Retrieval

In the retrieval of $a_{\text{Gau}}(\lambda)$ from in situ $R_{\text{rs}}(\lambda)$ data, we found that a band around 695–715 nm is important for accurate $a_{\text{Gau}}(\lambda)$ estimation in bloom waters. This is consistent with previous studies for the estimation of Chl-a in turbid productive waters [51–54]. Fundamentally, for phytoplankton bloom waters, the reflectance at wavelengths 695–715 nm can be augmented in the same way as occurs with terrestrial plants [51–53]. Lacking a proper spectral band within this spectral region for MODIS, the near-infrared band at 748 nm was included when inverting MODIS $R_{\text{rs}}(\lambda)$. Although higher uncertainties at 748 nm band were noticed (Section 3.4.1), the inclusion of the band at 748 nm results in much more reasonable $a_{\text{Gau}}(\lambda)$ retrieval from MODIS-Aqua measured $R_{\text{rs}}(\lambda)$ (Figure 9, Table 7) versus without $R_{\text{rs}}(\lambda)$ at this band. The same results were noticed in Section 3.1 for the $a_{\text{Gau}}(\lambda)$ retrieval from $R_{\text{rs}}(\lambda)$ at VIIRS and MSI spectral bands.

4.2. The seasonal $a_{\text{Gau}}(\lambda)$ Variation in Lake Erie

The MERIS derived seasonal $a_{\text{Gau}}(435)$ and $a_{\text{Gau}}(617.6)$ variation in Lake Erie follows the pattern recorded in the literature [55,56]. In the central basin of Lake Erie, the different patterns, as shown in Figure 13, are due to the greater nutrients in the spring and autumn, and lower availability in the summer as a result of water stratification. The nutrient inputs due to agricultural activities as well as an expanding non-native mussel population, along with the light and temperature changes in different seasons form the main drivers for the different algal bloom patterns in Lake Erie during the four seasons [55–59]. As discovered in Moon [55], the biomass and taxonomic composition and the dominant taxa of surface assemblages varied in different seasons, which can be explained by the light, temperature and nutrient combinations in different seasons, and the strong spatial variability associated with mesoscale physical processes such as upwelling and basin-scale circulation [59].

4.3. Pigment Retrieval and HABs Detection

In this study, MuPI as a semi-analytical inversion scheme was applied to retrieve multiple Gaussian curves from satellite remote sensing data. As demonstrated in previous study [10], these Gaussian curves are related to the different phytoplankton pigments.

This phytoplankton pigment information has been used in the quantification of phytoplankton community composition, at least to a functional group level ([5] and the references therein), because many pigments are particular to specific taxonomic groups or even species [1]. However, only limited work has been conducted to obtain these phytoplankton pigments from satellite remote sensing data. Pan et al. [8] and Moisan et al. [60], as two of them, attempted to obtain 12 and 18 different phytoplankton pigments from satellite remote sensing data, respectively, but both of them are empirical approach based. Pan et al. [8] proposed using empirical relationships of 12 different phytoplankton pigments with the same band ratios of satellite $R_{\text{rs}}(\lambda)$ around 490 nm to 550 nm. However, using 490 and 550 nm alone is not a good strategy for multiple pigments, as different pigments have different absorption peaks and troughs at different wavelengths [1]. Compared with Pan et al. [8], Moisan et al. [60] directly used the Chl-a product of satellite remote sensing to estimate $a_{\text{ph}}(\lambda)$, then decompose this $a_{\text{ph}}(\lambda)$ to 18 pigments based on their specific absorption coefficients. However, this satellite Chl-a product used similar empirical algorithm and spectral bands as in Pan et al. [8]. As both works were focused on coastal waters, another large uncertainty comes from non-algal particles and gelbstoff in these waters, which have a big influence on wavelengths shorter than 550 nm, and this influence cannot be eliminated by the band-ratio based algorithm. Compared with these works, MuPI not only considers the contribution of non-algal particles and gelbstoff in the coastal or inland waters, but also the different absorption properties of pigments, as shown in Tables 1 and 2.

Another application of the pigment information is in HAB detection. The algorithms for HAB detection are usually based on Chl-a and its anomalies [47], or marker pigments, such as phycocyanin

(PC) for cyanobacteria [6,7,18,48,61]. With MuPI, a successful discrimination of phycocyanin (PC) and Chl-*a* was achieved in this study. Limited by the dataset, the estimation of other pigment concentrations (phycoerythrin, chlorophyll *b* and *c*, carotenoids) from $a_{\text{Gau}}(\lambda)$, as demonstrated in Hoepffner and Sathyendranath [10], could not be conducted here.

Cyanobacteria dominated HABs are increasing globally and presenting a major environmental and human health issue. Extensive *Microcystis* blooms with toxin production occur during summer and fall in different regions around the world and *Microcystis* contamination has been documented at many regions including Pinto Lake (California), Lake Erie (U.S.A.) and Lake Taihu (China) [6,7,21,61]. Other common bloom-forming pelagic genera include *Aphanizomenon*, *Anabaena*, *Rhodomonas* and *Planktothrix*. However, since toxicity is primarily associated with *Microcystis*, these other cyanobacteria blooms are generally considered nuisance blooms which will not cause acutely dangers to humans and wildlife [62], but they are frequently present in impacted water bodies (Figure 8). However, the ability to discriminate the different bloom-causing species is one of the challenges that existing algorithms are facing. In our analysis with $a_{\text{Gau}}(\lambda)$ in Section 3.3, the possibility of discriminating different cyanobacteria species was shown. The variation of the spectral shape defined by $a_{\text{Gau}}(435)$, $a_{\text{Gau}}(584.4)$, and $a_{\text{Gau}}(617.6)$ was found vary with different species and their composition in the water body as a result of the variation in pigment ratios [6]. This result showed the potential of MuPI in the application of separating species in HAB waters, which will be useful in detecting and monitoring potential toxin producers. However, because of data limitation, this potential is not fully addressed in this study, but it will be further explored with a larger dataset in the future.

5. Conclusions

In this study, the MuPI model was validated for obtaining the peak heights of Gaussian curves ($a_{\text{Gau}}(\lambda)$) from multi-spectral satellite remote sensing data. The model performance was validated in the retrieval accuracy of $a_{\text{Gau}}(\lambda)$ with $R_{\text{rs}}(\lambda)$ of six multi-spectral band configurations, and the spectral requirements were discussed. Less than 35% of mean unbiased absolute percentage differences were achieved for $a_{\text{Gau}}(\lambda)$ from $R_{\text{rs}}(\lambda)$ spectra with OLCI, MERIS and MODIS bands, and less than 45% for VIIRS, MSI and OLI bands. Using data from the western basin of Lake Erie as an example, the $R_{\text{rs}}(\lambda)$ obtained from HICO and MODIS satellites were validated with in situ data over cyanobacterial bloom waters in Lake Erie, and the spatial distributions of $a_{\text{Gau}}(\lambda)$ and the concentrations of chlorophyll *a* and phycocyanin were obtained, where the patches of cyanobacteria bloom were clearly presented. A seasonal distribution of pigment absorption coefficients was obtained from MERIS seasonal composed imagery of 2011 for Lake Erie. These results demonstrate that, with MuPI, it is possible to analytically retrieve information of not only Chl-*a*, but also PC and potentially other pigments, which will significantly enhance our capability to characterize and evaluate the status of phytoplankton blooms and discriminate phytoplankton groups using satellite ocean color remote sensing.

Supplementary Materials: The algorithm code is available online at www.mdpi.com/2072-4292/9/12/1309/s1.

Acknowledgments: We greatly appreciate the constructive comments and suggestions from three anonymous reviewers. We thank Oregon State University for providing the HICO imagery, the National Aeronautics and Space Administration (NASA) for providing MODIS, MERIS imageries. We are in debt to Ronghua Ma, Deepak Mishra and Tim Moore for in situ measurements in Lake Taihu (China), MS ponds and Lake Erie. We are grateful to Timothy Moore for making the combination of phytoplankton composition pie charts and the MODIS-Aqua true color image for Figure 8. Support from NASA's Ocean Biology and Biogeochemistry and Water and Energy Cycle Programs, and the National Oceanic and Atmospheric Administration (NOAA) JPSS VIIRS Ocean Color Cal/Val Project is greatly appreciated. Mouw was supported by grants NNX14AB80G, 1R01ES021929-01 and OCE-1313783.

Author Contributions: Guoqing Wang and Zhongping Lee framed the research question; Colleen Mouw provided in situ data and helped in data analysis; Guoqing Wang carried out the study and drafted the manuscript; all co-authors provided critical revisions to the manuscript and helped in analyzing and interpretation of the results.

Conflicts of Interest: The authors declare no conflict of interest.

References

1. Jeffrey, S.W.; Mantoura, R.F.C.; Wright, S.W. *Phytoplankton Pigments in Oceanography: Guidelines to Modern Methods (Monographs on Oceanographic Methodology)*; UNESCO Publishing: Paris, France, 1997; p. 661.
2. Sosik, H.M.; Mitchell, B.G. Light absorption by phytoplankton, photosynthetic pigments and detritus in the California Current System. *Deep Sea Res. Part I* **1995**, *42*, 1717–1748. [[CrossRef](#)]
3. Schlüter, L.; Møhlenberg, F.; Havskum, H.; Larsen, S. The use of phytoplankton pigments for identifying and quantifying phytoplankton groups in coastal areas: Testing the influence of light and nutrients on pigment/chlorophyll *a* ratios. *Mar. Ecol. Prog. Ser.* **2000**, *192*, 49–63. [[CrossRef](#)]
4. The International Ocean-Colour Coordinating Group (IOCCG). *Phytoplankton Functional Types from Space*; Sathyendranath, S., Ed.; Reports of the International Ocean-Colour Coordinating Group, No. 15; IOCCG: Dartmouth, NS, Canada, 2014.
5. Mouw, C.B.; Hardman-Mountford, N.J.; Alvain, S.; Bracher, A.; Brewin, R.J.W.; Bricaud, A.; Ciotti, A.M.; Devred, E.; Fujiwara, A.; Hirata, T.; et al. A Consumer's Guide to Satellite Remote Sensing of Multiple Phytoplankton Groups in the Global Ocean. *Front. Mar. Sci.* **2017**, *4*. [[CrossRef](#)]
6. Simis, S.G.; Peters, S.W.; Gons, H.J. Remote sensing of the cyanobacterial pigment phycocyanin in turbid inland water. *Limnol. Oceanogr.* **2005**, *50*, 237–245. [[CrossRef](#)]
7. Wynne, T.T.; Stumpf, R.P.; Tomlinson, M.C.; Warner, R.A.; Tester, P.A.; Dyble, J.; Fahnenstiel, G.L. Relating spectral shape to cyanobacterial blooms in the Laurentian Great Lakes. *Int. J. Remote Sens.* **2008**, *29*, 3665–3672. [[CrossRef](#)]
8. Pan, X.; Mannino, A.; Russ, M.E.; Hooker, S.B.; Harding, L.W. Remote sensing of phytoplankton pigment distribution in the United States northeast coast. *Remote Sens. Environ.* **2010**, *114*, 2403–2416. [[CrossRef](#)]
9. Wang, G.; Lee, Z.; Mishra, D.R.; Ma, R. Retrieving absorption coefficients of multiple phytoplankton pigments from hyperspectral remote sensing reflectance measured over cyanobacteria bloom waters. *Limnol. Oceanogr. Methods* **2016**, *14*, 432–447. [[CrossRef](#)]
10. Hoepffner, N.; Sathyendranath, S. Effect of pigment composition on absorption properties of phytoplankton. *Mar. Ecol. Prog. Ser.* **1991**, *73*, 11–23. [[CrossRef](#)]
11. Hoepffner, N.; Sathyendranath, S. Determination of the major groups of phytoplankton pigments from the absorption spectra of total particulate matter. *J. Geophys. Res.* **1993**, *98*, 22789–22803. [[CrossRef](#)]
12. Bidigare, R.R.; Morrow, J.H.; Kiefer, D.A. Derivative analysis of spectral absorption by photosynthetic pigments in the western Sargasso Sea. *J. Mar. Res.* **1989**, *47*, 323–341. [[CrossRef](#)]
13. Bidigare, R.R.; Ondrusek, M.E.; Morrow, J.H.; Kiefer, D.A. In-vivo absorption properties of algal pigments. *Proc. SPIE* **1990**, *1302*. [[CrossRef](#)]
14. Bricaud, A.; Claustre, H.; Ras, J.; Oubelkheir, K. Natural variability of phytoplanktonic absorption in oceanic waters: Influence of the size structure of algal populations. *J. Geophys. Res.* **2004**, *109*. [[CrossRef](#)]
15. Lohrenz, S.E.; Weidemann, A.D.; Tuel, M. Phytoplankton spectral absorption as influenced by community size structure and pigment composition. *J. Plankton Res.* **2003**, *25*, 35–61. [[CrossRef](#)]
16. Moisan, J.R.; Moisan, T.A.; Linkswiler, M.A. An inverse modeling approach to estimating phytoplankton pigment concentrations from phytoplankton absorption spectra. *J. Geophys. Res.* **2011**, *116*. [[CrossRef](#)]
17. Chase, A.; Boss, E.; Zaneveld, R.; Bricaud, A.; Claustre, H.; Ras, J.; Dall'Olmo, G.; Westberry, T.K. Decomposition of in situ particulate absorption spectra. *Methods Oceanogr.* **2013**, *7*, 110–124. [[CrossRef](#)]
18. Mishra, S.; Mishra, D.R.; Lee, Z.; Tucker, C.S. Quantifying cyanobacterial phycocyanin concentration in turbid productive waters: A quasi-analytical approach. *Remote Sens. Environ.* **2013**, *133*, 141–151. [[CrossRef](#)]
19. Michalak, A.M.; Anderson, E.J.; Beletsky, D.; Boland, S.; Bosch, N.S.; Bridgeman, T.B.; Chaffin, J.D.; Cho, K.; Confesor, R.; Daloğlu, I.; et al. Record-setting algal bloom in Lake Erie caused by agricultural and meteorological trends consistent with expected future conditions. *Proc. Natl. Acad. Sci. USA* **2013**, *110*, 6448–6452. [[CrossRef](#)] [[PubMed](#)]
20. Mouw, C.B.; Ciochetto, A.; Moore, T.S.; Twardowski, M.; Sullivan, J.; Yu, A. SeaWiFS Bio-Optical Storage System (SeaBASS). NASA, 2014. Available online: https://seabass.gsfc.nasa.gov/archive/URI/Mouw/NIH-NSF_Lake_Erie/URI_Lake_Erie_2014/archive (accessed on 20 July 2017).

21. Moore, T.S.; Mouw, C.B.; Sullivan, J.M.; Twardowski, M.S.; Burtner, A.M.; Ciochetto, A.B.; McFarland, M.N.; Nayak, A.R.; Paladino, D.; Stockley, N.D.; et al. Bio-optical Properties of Cyanobacteria Blooms in Western Lake Erie. *Front. Mar. Sci.* **2017**, *4*, 201–220. [[CrossRef](#)]
22. Tassan, S.; Ferrari, G.M. An alternative approach to absorption measurements of aquatic particles retained on filters. *Limnol. Oceanogr.* **1995**, *40*, 1358–1368. [[CrossRef](#)]
23. Mitchell, B.G.; Kahru, M.; Wieland, J.; Stramska, M. Determination of spectral absorption coefficients of particles, dissolved material and phytoplankton for discrete water samples. In *Ocean Optics Protocols for Satellite Ocean Color Sensor Validation, Revision 4, Volume IV: Inherent Optical Properties: Instruments, Characterizations, Field Measurements and Data Analysis Protocols*; Mueller, J.L., Fargion, G.S., McClain, C.R., Eds.; NASA/TM-2003-211621; NASA Goddard Space Flight Center: Greenbelt, MD, USA, 2003; pp. 39–64.
24. Duan, H.; Ma, R.; Zhang, Y.; Loiselle, S.A.; Xu, J.; Zhao, C.; Zhou, L.; Shang, L. A new three-band algorithm for estimating chlorophyll concentrations in turbid inland lakes. *Environ. Res. Lett.* **2010**, *5*. [[CrossRef](#)]
25. Ma, R.H.; Tang, J.W.; Dai, J.F. Bio-optical model with optimal parameter suitable for Taihu Lake in water colour remote sensing. *Int. J. Remote Sens.* **2006**, *27*, 4305–4328. [[CrossRef](#)]
26. Mouw, C.B.; Ciochetto, A.B.; Grunert, B.; Yu, A. Expanding understanding of optical variability in Lake Superior with a four-year dataset. *Earth Syst. Sci. Data Discuss.* **2017**, *10*. [[CrossRef](#)]
27. Horváth, H.; Kovács, A.W.; Riddick, C.; Présing, M. Extraction methods for phycocyanin determination in freshwater filamentous cyanobacteria and their application in a shallow lake. *Eur. J. Phycol.* **2013**, *48*, 278–286. [[CrossRef](#)]
28. Gordon, H.R.; Wang, M. Retrieval of water-leaving radiance and aerosol optical thickness over the oceans with SeaWiFS: A preliminary algorithm. *Appl. Opt.* **1994**, *33*, 443–452. [[CrossRef](#)] [[PubMed](#)]
29. Ahmad, Z.; Franz, B.A.; McClain, C.R.; Kwiatkowska, E.J.; Werdell, J.; Shettle, E.P.; Holben, B.N. New aerosol models for the retrieval of aerosol optical thickness and normalized water-leaving radiances from the SeaWiFS and MODIS sensors over coastal regions and open oceans. *Appl. Opt.* **2010**, *49*, 5545–5560. [[CrossRef](#)] [[PubMed](#)]
30. Bailey, S.W.; Franz, B.A.; Werdell, P.J. Estimation of near-infrared water-leaving reflectance for satellite ocean color data processing. *Opt. Express* **2010**, *18*, 7521–7527. [[CrossRef](#)] [[PubMed](#)]
31. Gordon, H.R.; Brown, O.B.; Evans, R.H.; Brown, J.W.; Smith, R.C.; Baker, K.S.; Clark, D.K. A semianalytic radiance model of ocean color. *J. Geophys. Res.* **1988**, *93*, 10909–10924. [[CrossRef](#)]
32. Morel, A. Optics of marine particles and marine optics. In *Particle Analysis in Oceanography*; Springer: Berlin/Heidelberg, Germany, 1991; pp. 141–188.
33. Lee, Z.; Carder, K.L.; Arnone, R.A. Deriving inherent optical properties from water color: A multiband quasi-analytical algorithm for optically deep waters. *Appl. Opt.* **2002**, *41*, 5755–5772. [[CrossRef](#)] [[PubMed](#)]
34. Lee, Z.; Wei, J.; Voss, K.; Lewis, M.; Bricaud, A.; Huot, Y. Hyperspectral absorption coefficient of “pure” seawater in the range of 350–550 nm inverted from remote sensing reflectance. *Appl. Opt.* **2015**, *54*, 546–558. [[CrossRef](#)]
35. Pope, R.M.; Fry, E.S. Absorption spectrum (380–700 nm) of pure water. II. Integrating cavity measurements. *Appl. Opt.* **1997**, *36*, 8710–8723. [[PubMed](#)]
36. Werdell, P.J.; Franz, B.A.; Bailey, S.W.; Feldman, G.C.; Boss, E.; Brando, V.E.; Dowell, M.; Hirata, T.; Lavender, S.J.; Mangin, A.; et al. Generalized ocean color inversion model for retrieving marine inherent optical properties. *Appl. Opt.* **2013**, *52*, 2019–2037. [[CrossRef](#)] [[PubMed](#)]
37. Lee, Z.; Carder, K.L.; Mobley, C.D.; Steward, R.G.; Patch, J.S. Hyperspectral remote sensing for shallow waters. 1. A semianalytical model. *Appl. Opt.* **1998**, *37*, 6329–6338. [[CrossRef](#)] [[PubMed](#)]
38. Lee, Z.; Carder, K.L.; Mobley, C.D.; Steward, R.G.; Patch, J.S. Hyperspectral remote sensing for shallow waters. 2. Deriving bottom depths and water properties by optimization. *Appl. Opt.* **1999**, *38*, 3831–3843. [[PubMed](#)]
39. Huang, S.; Li, Y.; Shang, S.; Shang, S. Impact of computational methods and spectral models on the retrieval of optical properties via spectral optimization. *Opt. Express* **2013**, *21*, 6257–6273. [[CrossRef](#)] [[PubMed](#)]
40. Maritorena, S.; Siegel, D.A.; Peterson, A.R. Optimization of a semianalytical ocean color model for global-scale applications. *Appl. Opt.* **2002**, *41*, 2705–2714. [[CrossRef](#)] [[PubMed](#)]

41. Lee, Z.; Carder, K.L. Effect of spectral band numbers on the retrieval of water column and bottom properties from ocean color data. *Appl. Opt.* **2002**, *41*, 2191–2201. [[CrossRef](#)] [[PubMed](#)]
42. Lee, Z.; Carder, K.; Arnone, R.; He, M. Determination of primary spectral bands for remote sensing of aquatic environments. *Sensors* **2007**, *7*, 3428–3441. [[CrossRef](#)] [[PubMed](#)]
43. Lee, Z.; Shang, S.; Hu, C.; Zibordi, G. Spectral interdependence of remote-sensing reflectance and its implications on the design of ocean color satellite sensors. *Appl. Opt.* **2014**, *53*, 3301–3310. [[CrossRef](#)] [[PubMed](#)]
44. Gordon, H.R.; Clark, D.K.; Brown, J.W.; Brown, O.B.; Evans, R.H.; Broenkow, W.W. Phytoplankton pigment concentrations in the Middle Atlantic Bight: Comparison of ship determinations and CZCS estimates. *Appl. Opt.* **1983**, *22*, 20–36. [[CrossRef](#)] [[PubMed](#)]
45. O'Reilly, J.E.; Maritorena, S.; Mitchell, B.G.; Siegel, D.A.; Carder, K.L.; Garver, S.A.; Kahru, M.; McClain, C. Ocean color chlorophyll algorithms for SeaWiFS. *J. Geophys. Res.* **1998**, *103*, 24937–24953. [[CrossRef](#)]
46. Hu, C.; Lee, Z.; Franz, B. Chlorophyll algorithms for oligotrophic oceans: A novel approach based on three-band reflectance difference. *J. Geophys. Res.* **2012**, *117*. [[CrossRef](#)]
47. Hu, C.; Muller-Karger, F.E.; Taylor, C.J.; Carder, K.L.; Kelble, C.; Johns, E.; Heil, C.A. Red tide detection and tracing using MODIS fluorescence data: A regional example in SW Florida coastal waters. *Remote Sens. Environ.* **2005**, *97*, 311–321. [[CrossRef](#)]
48. Mishra, S.; Mishra, D.R. A novel remote sensing algorithm to quantify phycocyanin in cyanobacterial algal blooms. *Environ. Res. Lett.* **2014**, *9*. [[CrossRef](#)]
49. Mouw, C.B.; Greb, S.; Aurin, D.; DiGiacomo, P.M.; Lee, Z.; Twardowski, M.; Binding, C.; Hu, C.; Ma, R.; Moses, W. Aquatic color radiometry remote sensing of coastal and inland waters: Challenges and recommendations for future satellite missions. *Remote Sens. Environ.* **2015**, *160*, 15–30. [[CrossRef](#)]
50. Wang, M.; Son, S.; Shi, W. Evaluation of MODIS SWIR and NIR-SWIR atmospheric correction algorithms using SeaBASS data. *Remote Sens. Environ.* **2009**, *113*, 635–644. [[CrossRef](#)]
51. Dekker, A.G.; Malthus, T.J.; Wijnen, M.M.; Seyhan, E. Remote sensing as a tool for assessing water quality in Loosdrecht lakes. In *Restoration and Recovery of Shallow Eutrophic Lake Ecosystems in The Netherlands*; Springer: Dordrecht, The Netherlands, 1992; pp. 137–159.
52. Gower, J.F.R.; Doerffer, R.; Borstad, G.A. Interpretation of the 685 nm peak in water-leaving radiance spectra in terms of fluorescence, absorption and scattering, and its observation by MERIS. *Int. J. Remote Sens.* **1999**, *20*, 1771–1786. [[CrossRef](#)]
53. Gower, J.; King, S.; Borstad, G.; Brown, L. Detection of intense plankton blooms using the 709 nm band of the MERIS imaging spectrometer. *Int. J. Remote Sens.* **2005**, *26*, 2005–2012. [[CrossRef](#)]
54. Dall'Olmo, G.; Gitelson, A.A.; Rundquist, D.C.; Leavitt, B.; Barrow, T.; Holz, J.C. Assessing the potential of SeaWiFS and MODIS for estimating chlorophyll concentration in turbid productive waters using red and near-infrared bands. *Remote Sens. Environ.* **2005**, *96*, 176–187. [[CrossRef](#)]
55. Moon, J.B.; Carrick, H.J. Seasonal variation of phytoplankton nutrient limitation in Lake Erie. *Aquat. Microb. Ecol.* **2007**, *48*, 61–71. [[CrossRef](#)]
56. Leon, L.F.; Smith, R.E.; Hipsey, M.R.; Bocaniov, S.A.; Higgins, S.N.; Hecky, R.E.; Antenucci, J.P.; Imberger, J.A.; Guildford, S.J. Application of a 3D hydrodynamic-biological model for seasonal and spatial dynamics of water quality and phytoplankton in Lake Erie. *J. Great Lakes Res.* **2011**, *37*, 41–53. [[CrossRef](#)]
57. Vanderploeg, H.A.; Liebig, J.R.; Carmichael, W.W.; Agy, M.A.; Johengen, T.H.; Fahnenstiel, G.L.; Nalepa, T.F. Zebra mussel (*Dreissena polymorpha*) selective filtration promoted toxic *Microcystis* blooms in Saginaw Bay (Lake Huron) and Lake Erie. *Can. J. Fish. Aquat. Sci.* **2001**, *58*, 1208–1221. [[CrossRef](#)]
58. Binding, C.; Greenberg, T.; Bukata, R. An analysis of MODIS-derived algal and mineral turbidity in Lake Erie. *J. Great Lakes Res.* **2012**, *38*, 107–116. [[CrossRef](#)]
59. Sayers, M.; Fahnenstiel, G.L.; Shuchman, R.A.; Whitley, M. Cyanobacteria blooms in three eutrophic basins of the Great Lakes: A comparative analysis using satellite remote sensing. *Int. J. Remote Sens.* **2016**, *37*, 4148–4171. [[CrossRef](#)]

60. Moisan, T.A.; Rufty, K.M.; Moisan, J.R.; Linkswiler, M.A. Satellite Observations of Phytoplankton Functional Type Spatial Distributions, Phenology, Diversity, and Ecotones. *Front. Mar. Sci.* **2017**, *4*. [[CrossRef](#)]
61. Kudela, R.M.; Palacios, S.L.; Austerberry, D.C.; Accorsi, E.K.; Guild, L.S.; Torres-Perez, J. Application of hyperspectral remote sensing to cyanobacterial blooms in inland waters. *Remote Sens. Environ.* **2015**, *167*, 196–205. [[CrossRef](#)]
62. Kudela, R.M. Characterization and deployment of Solid Phase Adsorption Toxin Tracking (SPATT) resin for monitoring of microcystins in fresh and saltwater. *Harmful Algae* **2011**, *11*, 117–125. [[CrossRef](#)]



© 2017 by the authors. Licensee MDPI, Basel, Switzerland. This article is an open access article distributed under the terms and conditions of the Creative Commons Attribution (CC BY) license (<http://creativecommons.org/licenses/by/4.0/>).