



RESEARCH ARTICLE

REVISED An adaptable toolkit to assess commercial fishery costs and benefits related to marine protected area network design [version 2; peer review: 2 approved]

Rémi M. Daigle¹, Cristián J. Monaco², Ashley K. Elgin³

¹Department of Ecology and Evolutionary Biology, University of Toronto, Toronto, Ontario, M5S 3B2, Canada

²Department of Zoology and Entomology, Rhodes University, Grahamstown, 6140, South Africa

³National Oceanic and Atmospheric Administration, Great Lakes Environmental Research Laboratory, Muskegon, Michigan, 49441, USA

v2 First published: 09 Nov 2015, 4:1234 (<https://doi.org/10.12688/f1000research.7312.1>)
 Latest published: 22 Feb 2017, 4:1234 (<https://doi.org/10.12688/f1000research.7312.2>)

Abstract

Around the world, governments are establishing Marine Protected Area (MPA) networks to meet their commitments to the United Nations Convention on Biological Diversity. MPAs are often used in an effort to conserve biodiversity and manage fisheries stocks. However, their efficacy and effect on fisheries yields remain unclear. We conducted a case-study on the economic impact of different MPA network design strategies on the Atlantic cod (*Gadus morhua*) fisheries in Canada. The open-source R package that we developed to analyze this case study can be customized to conduct similar analyses for other systems. We used a spatially-explicit individual-based model of population growth and dispersal coupled with a fisheries management and harvesting component. We found that MPA networks that both protect the target species' habitat and were spatially optimized to improve population connectivity had the highest net present value (i.e., were most profitable for the fishing industry). These higher profits were achieved primarily by reducing the distance travelled for fishing and reducing the probability of a moratorium event. These findings add to a growing body of knowledge demonstrating the importance of incorporating population connectivity in the MPA planning process, as well as the ability of this R package to explore ecological and economic consequences of alternative MPA network designs.

Keywords

Cost-benefit analysis, Atlantic Cod, individual based models, Conservation, Fisheries management

Open Peer Review

Reviewer Status ✓ ✓

	Invited Reviewers	
	1	2
REVISED version 2 published 22 Feb 2017		✓ report
version 1 published 09 Nov 2015	✓ report	↑ ? report

- Pedro Peres-Neto**, Université du Québec à Montréal, Montréal, Canada
- Marco Andrello**, University of Montpellier, Montpellier, France

Any reports and responses or comments on the article can be found at the end of the article.



This article is included in the **Global Open Data for Agriculture and Nutrition** gateway.



This article is included in the RPackage gateway.

Corresponding author: Rémi M. Daigle (remi.daigle@utoronto.ca)

Competing interests: No competing interests were disclosed.

Grant information: This manuscript is the product of a collaboration formed during the Ecological Dissertations in the Aquatic Sciences (Eco-DAS) XI Symposium in October 2014 at the University of Hawai'i in Honolulu. Eco-DAS XI funding was provided by the National Science Foundation (NSF Award #1356792). Eco-DAS XI was sponsored by the Center for Microbial Oceanography: Research and Education (C-MORE), the University of Hawai'i School of Ocean and Earth Science and Technology (SOEST) and the UH Department of Oceanography. *The funders had no role in study design, data collection and analysis, decision to publish, or preparation of the manuscript.*

Copyright: © 2017 Daigle RM *et al.* This is an open access article distributed under the terms of the [Creative Commons Attribution License](#), which permits unrestricted use, distribution, and reproduction in any medium, provided the original work is properly cited.

How to cite this article: Daigle RM, Monaco CJ and Elgin AK. **An adaptable toolkit to assess commercial fishery costs and benefits related to marine protected area network design [version 2; peer review: 2 approved]** F1000Research 2017, 4:1234 (<https://doi.org/10.12688/f1000research.7312.2>)

First published: 09 Nov 2015, 4:1234 (<https://doi.org/10.12688/f1000research.7312.1>)

REVISED Amendments from Version 1

We have made improvements as a result of reviewers' suggestions (See Referee Report). We have also re-developed the 'toolbox' from V1 to a proper R package with documentation. In doing so, we also improved performance and eliminated the need for the 'virtual_fish_ratio'.

See referee reports

Introduction

Marine Protected Areas (MPAs) have risen to be among the most popular measures to conserve biodiversity and manage populations subjected to strong fishing pressure. MPAs offer 'safe zones' for individuals to breed and grow, thus potentially facilitating population persistence. Biological impacts of MPAs also have been shown to extend beyond their boundaries via "spillover effects", potentially benefitting adjacent fisheries and thus contributing to existing management strategies (Bellier *et al.*, 2013; Kellner *et al.*, 2007; Sanchirico *et al.*, 2006). Concomitant with the global establishment of MPAs, there has been a growing field of science seeking to objectively quantify the contribution of MPAs to the conservation of commercially and culturally important species. Importantly, studies are highlighting the need for improvements on design (Gaines *et al.*, 2010). Careful consideration should be paid to the placement of MPAs relative to the natural history of focal species, particularly if connectivity is rooted in the objectives and/or design. For example, studies based on genetic analyses have revealed that invertebrate larvae disperse shorter distances than fish species (~50–100 vs. 100–200 km, respectively) (Kinlan & Gaines, 2003; Shanks *et al.*, 2003), suggesting that optimal size and spacing between MPAs should be adjusted according to the target species.

Dispersal processes are particularly relevant to MPA design because many marine species under protection by MPAs disperse during different life stages. The dynamics and persistence of populations are influenced by connectivity, which in turn is regulated by dispersal during the larval, juvenile or adult phases (Cowen & Sponaugle, 2009; Grüss *et al.*, 2011; Levin, 2006). Environmental variables (e.g. temperature, currents) may also influence these processes. For instance, the temperature dependence of the planktonic larval duration (PLD) may add a latitude-dependent element to dispersal, which is rarely incorporated into MPA design protocols because of a scarcity of dispersal data (Laurel & Bradbury, 2006).

A promising effort to account for environmental complexities has been the development of MPA networks; that is, a series of independent protected areas interconnected by the movement of organisms between them (Avasthi, 2005; Gaines *et al.*, 2010). For these networks to succeed, managers are required to make decisions about the optimal size, location, and number of MPAs to implement (Halpern, 2003). While poorly chosen locations for reserves may have negative effects on populations' productivity (Costello & Polasky, 2008; Crowder *et al.*, 2000), well-designed networks, with highly connected reserves, may allow for increased reproduction and survival, although much of the evidence is theoretical or indirect.

Currently, the theoretical importance of connectivity is well established in the ecological literature (e.g., Gaines *et al.*, 2010; Palumbi, 2004). Although one of the four main design principles for MPAs is connectivity (UNEP-CBD, 2011), many networks of MPAs have not adequately considered this factor in their designs (Allison *et al.*, 2003; Hastings & Botsford, 2003; Lester *et al.*, 2009). Globally, only 18 to 49% of MPAs are regarded as part of a connected network depending on which definition of "connected network" is used (Wood *et al.*, 2008). These definitions range from having at least one other MPA greater than 12.5 km² within 10–20 km to at least one other MPA greater than 3.14 km² within 20–150 km. There is also a bias towards large reserves, as the ten largest MPAs (most of which were created after 2005) comprise 53% of the protected area (Devillers *et al.*, 2015). As of 2011, California is the only jurisdiction that uses both size and spacing in MPA design (Moffitt *et al.*, 2011). Additionally, there is a spatial bias in protection due to jurisdictional, political and logistical concerns. The pelagic environment, which constitutes 99% of biosphere volume and supplies >80% of human fish food supply, may be <0.1% protected (Game *et al.*, 2009) while areas within the exclusive economic zones are 1.5% protected (Wood *et al.*, 2008). However, these estimates are now outdated and the area protected is growing every year. While opinions vary regarding the total proportion of area that should be protected (10–30%), it is clear that more MPAs are needed to meet that goal (Game *et al.*, 2009; Wood *et al.*, 2008). Adding new MPAs is an opportunity to improve the connectivity of existing networks.

MPA research has also revealed that, in addition to the biological and ecological benefits, the success of MPAs needs to be quantified in terms of economic factors. For instance, evidence shows that substantial investment (i.e., USD 5–19 billion; Balmford *et al.*, 2004) would greatly increase the sustainability in the global marine fish catch. In this regard, studies that address the feedbacks between empirical fishery data and human behavior are expected to improve our ability to forecast short-term fisheries (White *et al.*, 2013). One economic tool that is used to assess fisheries is cost-benefit analysis, which quantifies the balance between costs and benefits of a management action (e.g., Zimmerman *et al.*, 2015). A major challenge for cost-benefit analysis for MPAs is that the costs are incurred immediately, yet the benefits may not be fully realized until the distant future. Hence, it is necessary to conduct cost-benefit analysis over a multi-year time horizon and apply a social discount factor to account for the fact that costs and benefits are valued less in the future than in the present (Arrow *et al.*, 2013).

Despite the need for more comprehensive analytical models that encompass both biological and economic criteria, few have been developed thus far (White *et al.*, 2013). One such program is the freeware Marxan, which has been mainly used for conservation planning purposes (Ball *et al.*, 2009). There are also add-on programs, such as MultCSync (Moffett *et al.*, 2005) and NatureServe Vista (<http://www.natureserve.org/vista>) that can be used to evaluate conservation goals in light of social and economic criteria. However, these tools do not incorporate population connectivity into their analyses by default. Here we introduce a flexible and user-friendly toolkit developed in R as an open-source package for stakeholders to explore the effects of varying different biological and economical parameters on the performance of an MPA network. It

addresses specifically the interaction between MPA network design and population connectivity. To illustrate how this toolkit can be applied to different scenarios, we address two specific objectives: (1) examine if having a network of connected MPAs provides more resilience/population stability compared to having a single small, isolated MPA; and (2) determine if there is an economic benefit associated with connected networks of MPAs compared to other potential MPA designs.

We used the Canadian Atlantic cod (*Gadus morhua*) fishery for our case study because cod is a species with high commercial and cultural value. Cod populations found off the continental shelf of Newfoundland were once one of the world's richest fishing resources, and shaped Newfoundland society for centuries (Hamilton & Butler, 2001). Atlantic cod stocks suffered greatly between 1960 and 1990, mostly due to poorly managed fishing pressure. While northwestern cod annual landings were <300 kt before the 1960s, the introduction of advanced fishing gear (e.g. factory trawlers) boosted catches to >800 kt by 1968. The high fishing pressure dramatically reduced standing stocks, and by 1977 fish landings had dropped significantly. Populations seemed to recover in the 1980s, along with increased fishing efforts, which corresponded with a two-fold decline in survival probability (Hutchings & Myers, 1994). As a result, the stocks off Newfoundland and Labrador went commercially extinct (i.e., were no longer economically viable to harvest) in 1992 (Hutchings & Myers, 1994). The fishery has since shifted to one focused on lobster (\$19M), snow crab (\$121M), and northern shrimp (\$179M) and the total value of the fisheries harvest is now worth more than it was before the moratorium (Schrank & Roy, 2013). While some cod stocks have started showing tenuous signs of recovery, they are nowhere near pre-moratorium levels (DFO, 2014); however, protecting a few populations from targeted or bycatch fisheries mortality may improve the probability of recovery. For this reason, we think that exploring the potential benefit of MPA networks for Atlantic Cod would be an informative exercise with implications for management.

Methods

We developed an individual-based population model for Atlantic Cod (*Gadus morhua*), which includes fisheries harvesting and alternative management strategies. The model is available as an open-source R package (Daigle *et al.*, 2017a), which can be downloaded and adapted to the researcher's specific questions. We describe the general structure of the model below without going into exhaustive detail. Please refer to the toolkit's 'read me' section for more information on the model mechanics and specific parameter information. The model output presented below is available on [zenodo](#) (Daigle *et al.*, 2017b).

Model framework

The model is organized hierarchically into modules and sub-modules (Figure 1) for users to manipulate according to their own requirements. Here we used this model to evaluate four management strategies (Figure 2) in terms of socially discounted net financial benefit.

The first module establishes a 'Spatial Base Layer' by defining a basic grid and creating specific protection scenarios for the resource. The model then runs three modules in sequence: 'Growth and Reproduction', 'Dispersal', and 'Harvesting', all of which determine the population dynamics of the resource (see section *Population dynamics*). These modules are contained in two nested recursive loops, an outer loop that instructs for specific management strategies scenarios (see section *Management strategies scenarios*), and an inner loop that defines the time dimension. Here we ran the model between the years 2000 and 2050, with 1 yr time steps. Finally, the model runs through a 'Cost of Evaluation' module, which factors in costs associated with complying with MPA spatial restrictions, the benefits based on catch values, and social discount rates (Figure 1).

Population dynamics

The length and weight of fish is estimated from the Von Bertalanffy growth model in (Knickle & Rose, 2013). It is known that sexual maturity for coastal cod occurs between 2–4 years and 6–9 years for some oceanic stock (Otterå, 2004); our model approximates this by determining sexual maturity based on a sigmoid logistic curve. The modelled fish begin maturing at 2 y, 50% are mature at 4 y and all are mature at 6 y. Egg production is determined by the weight of spawning females (0.5 million eggs per kg of female). Larval dispersal was approximated with a random walk of 2 cm s⁻¹ over 90 d, which is equivalent to the mean current velocity (Brander & Hurley, 1992; Otterå, 2004). Adult dispersal was also approximated using a random walk, which was calibrated with tagging data from Lawson & Rose (2000). Our model has four sources of mortality: larval, recruitment, adult, and fisheries. In the model, larval and adult mortality vary randomly through time and space, while recruitment, carrying capacity, and fisheries mortality are linked to adult biomass. Larval and adult mortality are estimated yearly from a beta ($\alpha=1000$ and $\beta=1.2$, which approximates mean larval mortality of 99.88% with a range of 98.98–99.99%; Mountain *et al.*, 2008) and normal distribution ($\mu = 0.5938$ and $SD = 0.0517$; Swain & Chouinard, 2008), respectively. Recruitment mortality is estimated using a Beverton-Holt model and carrying capacity is assumed to be 0.43 (± 0.38 SD) t km⁻², which represents an average value for Canadian cod stocks (Myers *et al.*, 2001). Carrying capacity is also enforced for adult fish and areas with biomass which exceed the carrying capacity are subject to increased mortality. Fisheries mortality is determined by estimating cod biomass by sampling the fish population under 0.1% of the entire EEZ (Exclusive Economic Zone) and using an FMSY (fishing mortality that produces a maximum sustainable yield) of 0.28 (Mountain *et al.*, 2008). The model sets the target quota to $\frac{2}{3}$ of FMSY according to the precautionary principle. Fisherman are assumed to have near perfect knowledge of the optimal fishing locations, and will travel the smallest distance to catch the most fish. We assume that fish under 38 cm are not targeted or caught by fisherman (Feekings *et al.*, 2013). Fish were valued at a landed price of CAD\$1.24 kg⁻¹ (DFO, 2015). We used operating costs from the Mixed Fleet Fishery (DFO, 2015) because cod-specific operating costs are difficult to obtain given that cod is caught as bycatch, but not targeted (Schrank & Roy, 2013).

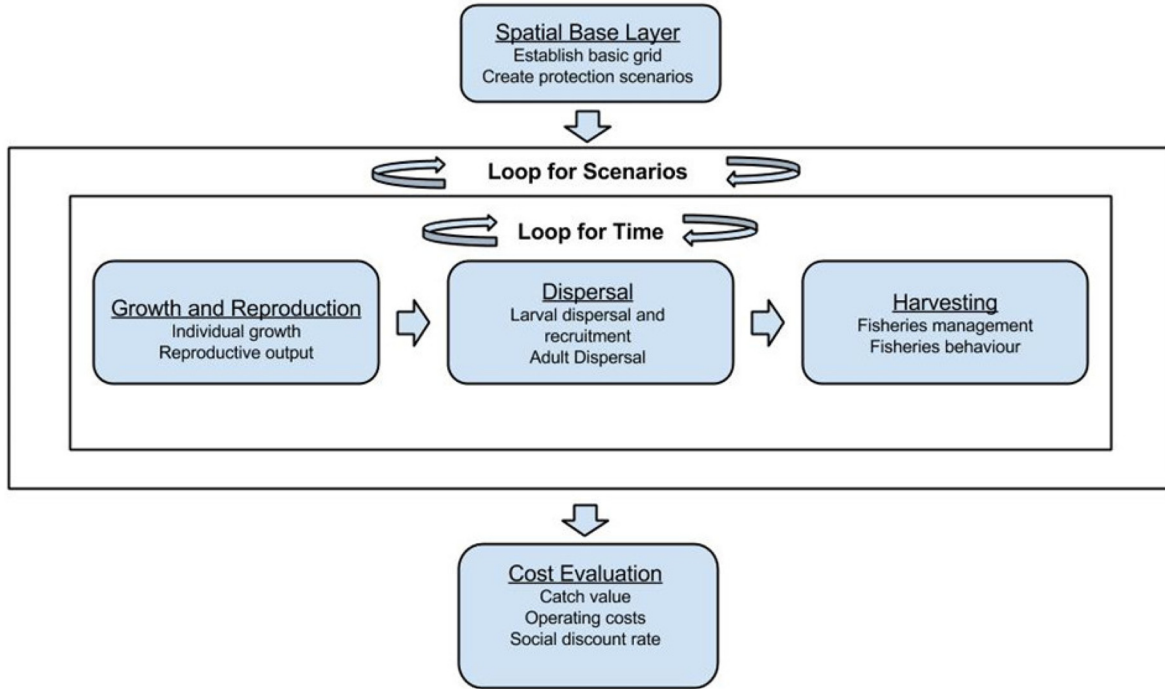


Figure 1. Conceptual diagram of the individual-based population model for Atlantic Cod (*Gadus morhua*), which includes fisheries harvesting and management. This model evaluates contrasting management scenarios and compares them based on socially discounted net benefits.

Management strategies scenarios

The “Status Quo” scenario has all existing MPAs in Eastern Canada that are at least as large as model cell size (cells are 400 km²). We calculated the profitability ratio using the most recently available estimates of operating costs and landed value for the Canadian Atlantic Region “mixed fleet” fishery (DFO, 2007). The resulting ratio (landed value/operating cost; ~1.6) indicates the average return on investment in operation for the Status Quo scenario. To estimate operating cost for the other scenarios, we identified distance variable operating costs (fuel and labour), determined the average distance traveled under the Status Quo scenario, and then calculated a distance correction factor based on the difference in distance traveled for a scenario relative to the Status Quo.

The scenarios with MPA protection had 10% of the EEZ closed to fishing, but the criteria for MPA placement was different for each. The MPAs in the “Maximum Distance” scenario have been placed to maximize the distance between them, representing a worst-case scenario in terms of population connectivity. The MPAs in the “Fixed Distance” scenario have been placed to optimize the distance between them (~75km) relative to a mean adult dispersal distance (Lawson & Rose, 2000). In the “Targeted” scenario, the cod’s breeding locations have been protected by default and optimal distance MPAs have been added exclusively in habitat suitable for cod. The size distribution of the newly generated MPAs were based on that of the coastal and marine protected areas in the World Database on Protected Areas (UNEP-WCMC, 2015) because this distribution represents what managers have been able to feasibly implement.

Cost benefit analysis

We calculated net benefits for years 2021–2071 of the model simulation. Social discount rate (SDR) is used to translate future values into present values. The outcome of cost benefit analysis can be influenced by discount rate (Lupi *et al.*, 2003), so we used a range of values (1.5%, 3.0%, and 6.0%) to test this sensitivity. Discount factor β_t was calculated from SDR:

$$\beta_t = \frac{1}{(1 + SDR)^t}$$

Net present value (NPV) was calculated from the sum of present values of net revenue (total revenue from catch R_t minus total operational costs C_t) for each year in the simulation:

$$NPV_{scenario} = \sum_{t=1}^{t=50} (R_t - C_t) \times \beta_t$$

Model output comparisons

To examine the relative effects of scenario on the cumulative present catch value, we calculated three error statistics (mean absolute error, root-mean square error, and mean absolute percent error) using the status quo scenario as a reference. We favored these error metrics to assess magnitude of difference between our model outputs, instead of traditional ANOVA tests, because the large number of replication (100) would have likely influenced the significance level in the latter (White *et al.*, 2014).

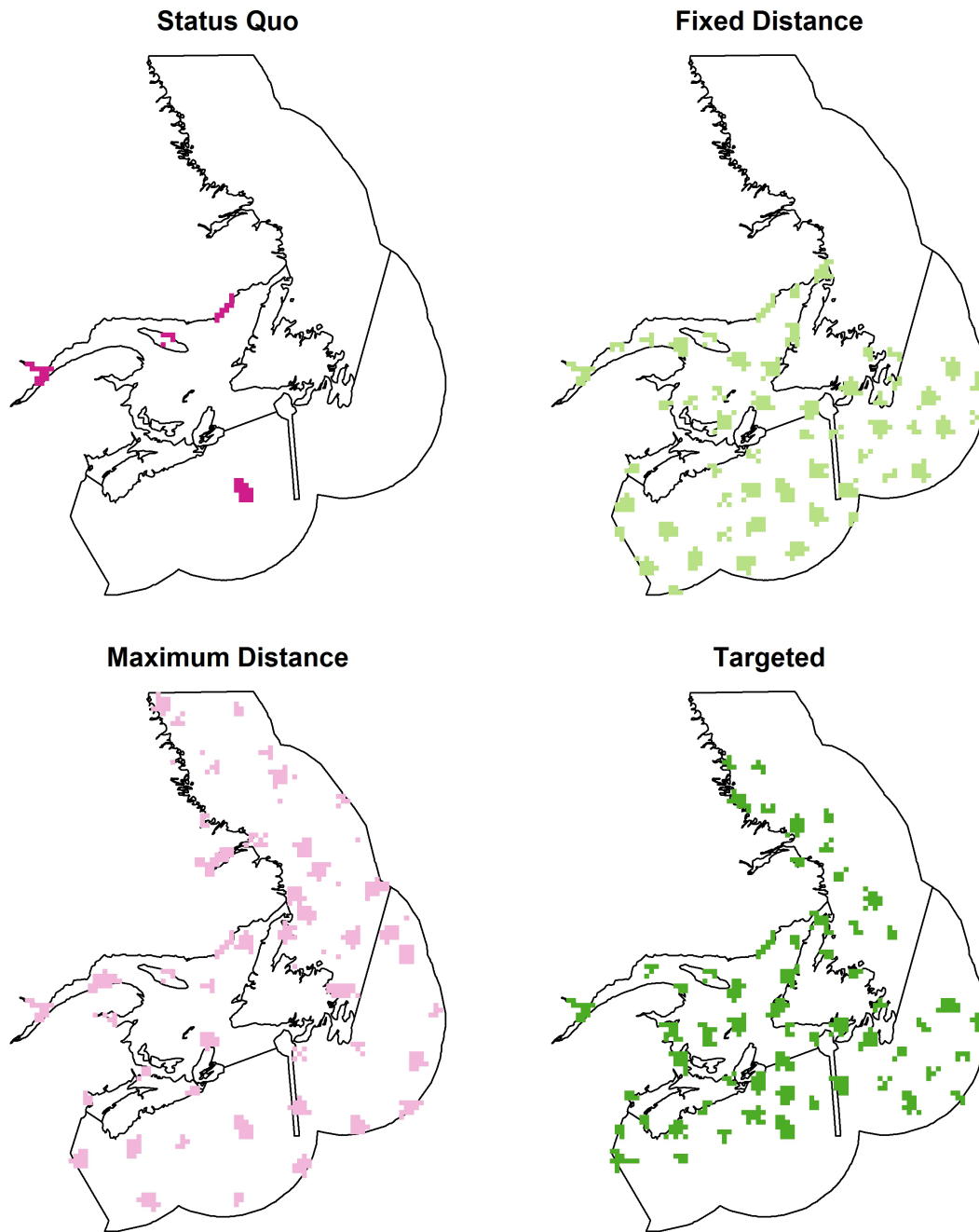


Figure 2. Map of eastern Canadian EEZ (Exclusive Economic Zone) and examples of different scenarios for the planning of Marine Protected Areas (MPAs). The "Status Quo" scenario has all existing MPAs ≥ 400 km². The MPAs in the "Maximum Distance" scenario have been placed to maximize the distance between them. The MPAs in the "Fixed Distance" scenario have been placed to optimize the distance between them (~75km). The cod's breeding locations in the "Targeted" scenarios have been protected by default and optimal distance MPAs have been added exclusively in habitat suitable for cod. Scenarios from replicate 1 used as an example, other replicates are available in the appendix (Figure A1–Figure A99).

Sensitivity analysis

We modified select parameters by $\pm 10\%$ (or ± 1 y for integer values) for the Targeted and Status Quo scenarios. To quantify model sensitivity, we then compared the mean ($n = 25$) final net present values for the full 50-year time horizon to those of the full models ($n = 100$). We used the social discount rate of 0.015 because this is the value for which differences among the scenarios are most pronounced.

Results

Cod biomass did not recover to historically high abundances in any of the four management scenarios. Cod biomass ranged from an average of 8.9 to 11.3 kt depending on the management scenario (Table 1, Figure 3). While there were no dramatic increases in biomass over time, there is a slight increase in mean biomass for the Fixed Distance and Targeted scenarios. Similarly, the pattern for the harvest follows that of biomass with a few differences. The total catch in all protected scenarios, particularly the Targeted scenario, decreases drastically within the first 5 y, then recovers within ~ 12 y. In Contrast, total catch in the Status Quo scenario steadily decreases over the entire 51 y. (Table 1, Figure 4). The probability of a moratorium (triggered when total biomass is below 10 kt)

being enforced in a given year was substantially higher for the Status Quo scenario (5.02%) and was lowest for the Targeted scenario (0.98) (Table1).

The mean distance from shore of each fish caught was actually highest in the Status Quo scenario (Table 1, Figure 5). There is a 5 to 10 yr period of adjustment to the management scenario regulation, but the distances in each scenario achieve a stable plateau. On average, fish were caught 327 km from shore in the Status Quo scenario while only 314 km in the Targeted scenario.

In any given year, the differences between management scenarios in terms of biomass, catch, or mean distance from shore are not very large, particularly among scenarios with added MPAs (Table 1, Figure 3–Figure 5). However, when compounded over multiple decades, these differences have a meaningful effect on economic value (Figure 6). For the first ~ 20 y, all scenarios have similar present catch cumulative values (Figure 6); however, for the remaining 30 y, the Targeted and Maximum Distance scenarios diverge significantly from the Status Quo and Fixed Distance scenarios. For all values of SDR, NPV was highest for the Targeted and lowest for the Status Quo scenarios. The absolute and relative

Table 1. Mean (\pm SE) summary statistics under each protection scenario for all 51 years and 100 replicates ($n=5100$). The Biomass is the sum of all the live cod weight in the model domain and catch is the weight of those which were harvested by the fishermen that year. The distance is the weighted mean distance travelled by fishermen (weighted by catch). moratorium (triggered when total biomass is below 10 kt).

##	scenario	Biomass	Catch	Distance	Moratorium
## 1	Status Quo	8597 (± 16)	2938 (± 8)	327 (± 1)	5.02 (± 0)
## 2	Maximum Distance	9887 (± 12)	3074 (± 6)	319 (± 0)	1.37 (± 0)
## 3	Fixed Distance	10768 (± 12)	3161 (± 6)	314 (± 0)	1.12 (± 0)
## 4	Targeted	11282 (± 12)	3224 (± 6)	316 (± 0)	0.98 (± 0)

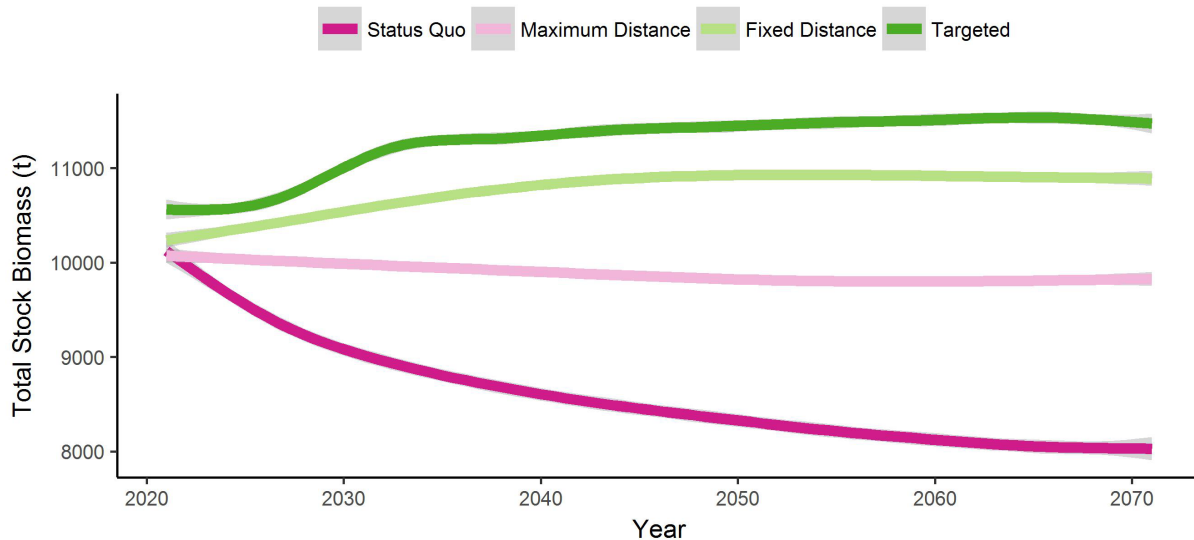


Figure 3. Total stock biomass for each scenario over time. The solid lines represent the mean of all replicates ($n=100$) and the shaded regions show the standard error around each mean.

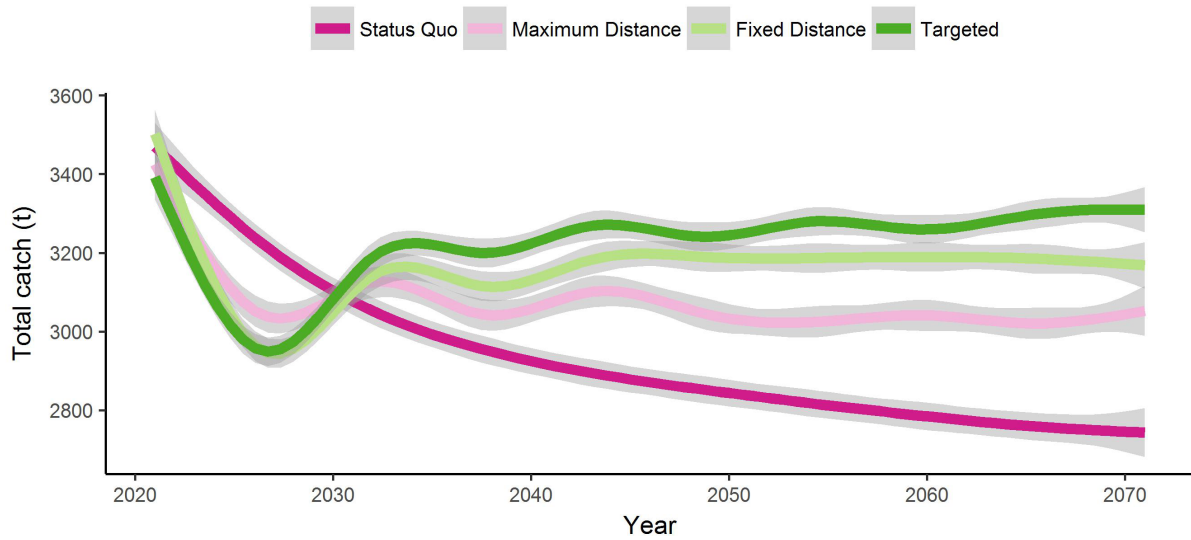


Figure 4. Total catch biomass for each scenario over time. The solid lines represent the mean of all replicates (n=100) and the shaded regions show the standard error around each mean.

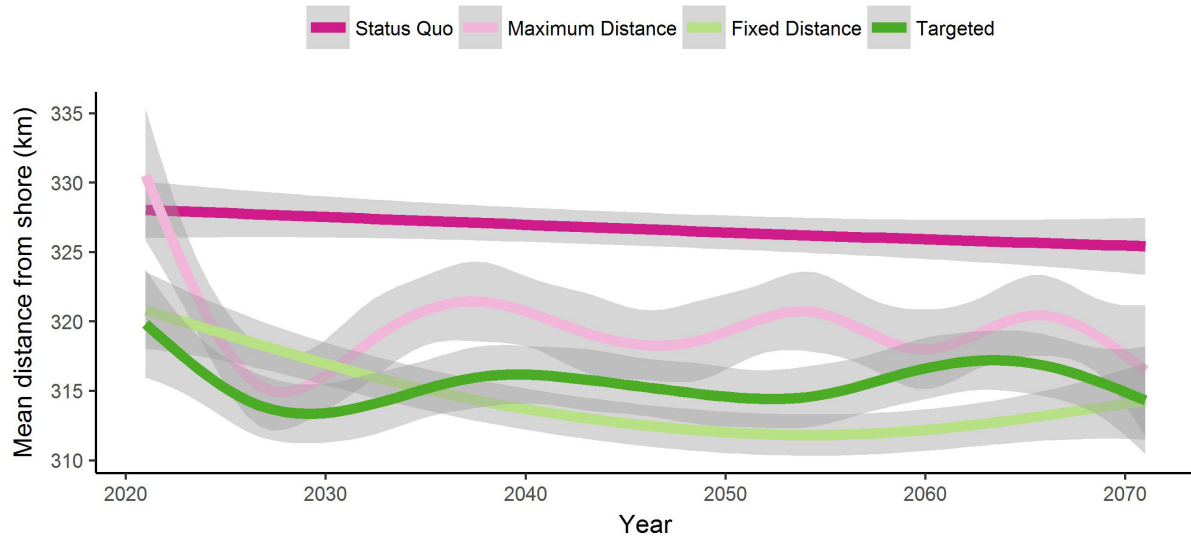


Figure 5. Mean distance from shore of each fish caught for each scenario over time. The solid lines represent the mean of all replicates (n=100) and the shaded regions show the standard error around each mean.

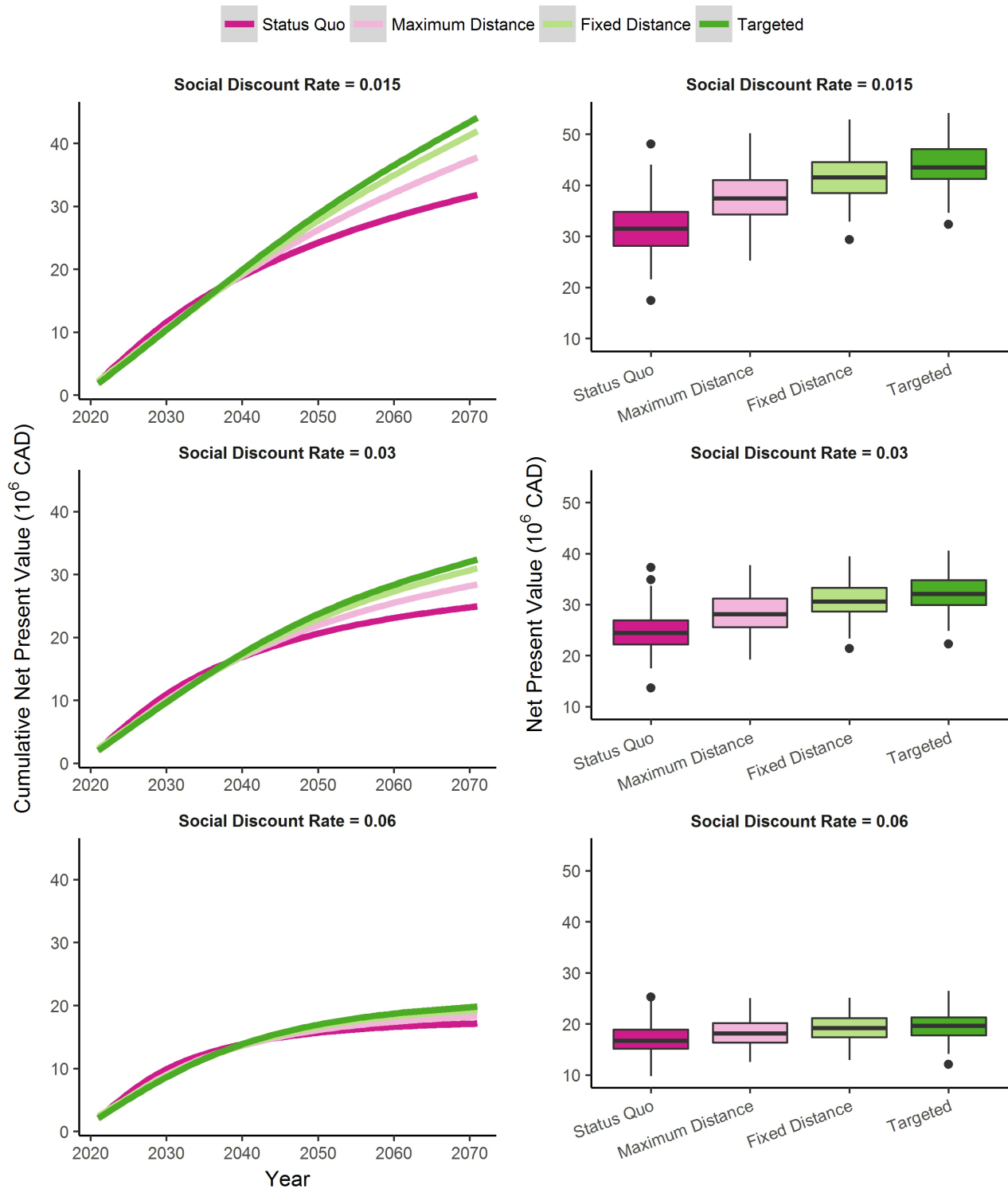


Figure 6. Net present values for each MPA scenario, taking into account three levels of social discount rate. The figures on the left show cumulative net present value, which represents the progression of net present values for each of the years in the time horizon. The solid lines display the mean of all replicates ($n=100$) and the shaded regions represent standard error. The figures on the right show the final net present value for the full 50 year time horizon. Here, the replicates are represented using a box plot. The median line is surrounded by the 25% and 75% quartiles, whiskers show the limits of 1.5 times the inter-quartile range, and points beyond that range are considered outliers.

differences in NPVs between Status Quo and treatment scenarios gradually decreased with increasing SDR (Figure 6; Table 2). With an SDR of 0.015, 0.03, or 0.06, the mean total value of the Status Quo scenario over 51 years is 32, 25, or 17 million CAD respectively while that of the Targeted scenario is 44, 32, or 20 million CAD.

Sensitivity analysis revealed that increasing or decreasing the estimates for most parameters did not change the predicted NPV, nor influence the conclusion of the model (Table 3, Figure 7). NPV increases with an increase in fecundity, but the Targeted scenario still produces more benefit than the Status Quo. The only exception is that when minimum age of catch is increased by one year, the

Table 2. Error statistics of Net Present Values for the treatment scenarios (Maximum Distance, MD; Fixed Distance, FD; Targeted, TR) relative to Status Quo (SQ), for the three social discount rates (SDR). n = 100 replicates.

SDR	Scenarios	Mean absolute error (10 ⁶ CAD)	Root mean square error (10 ⁶ CAD)	Mean absolute percent error
0.015	SQ vs MD	7.88	9.50	20.12
0.015	SQ vs FD	10.79	12.20	25.19
0.015	SQ vs TR	12.59	13.84	28.24
0.030	SQ vs MD	5.60	6.77	19.08
0.030	SQ vs FD	6.91	8.13	21.73
0.030	SQ vs TR	7.85	9.01	23.89
0.060	SQ vs MD	3.46	4.30	18.69
0.060	SQ vs FD	3.65	4.54	18.49
0.060	SQ vs TR	3.82	4.72	19.04

Table 3. Values and definitions of the parameters used in the sensitivity analysis.

Parameter	Definition	Low Value (90%)	Normal Value (100%)	High Value (110%)
<i>age_mat_sigm</i>	Sigmoid of the logistic curve for age at sexual maturity. Fish begin maturing at 2 y, 50% at 4 y and all are mature at 6y	3.6	4	4.4
<i>e_fold_adult</i>	The e-folding scale for larvae in km (the distance at which there will be fewer settlers by a factor of e)	245	272	300
<i>e_fold_larvae</i>	The e-folding scale for larvae in km (the distance at which there will be fewer settlers by a factor of e)	140	156	171
<i>fecundity</i>	Size dependent fecundity (eggs per kg of female)	450000	500000	550000
<i>FMSY</i>	Fisheries mortality at Maximum Sustainable Yield	0.25	0.28	0.31
<i>initial_abun</i>	Number of fish when model is initialized	225000000	250000000	275000000
<i>k_mean</i>	Von Bertalanffy growth model parameters - mean growth coefficient (1/year)	0.12	0.13	0.14
<i>min_age_catch</i>	Age at which fish can be caught	3	4	5
<i>min_age_migration</i>	Age at which fish begin adult migration	5	6	7

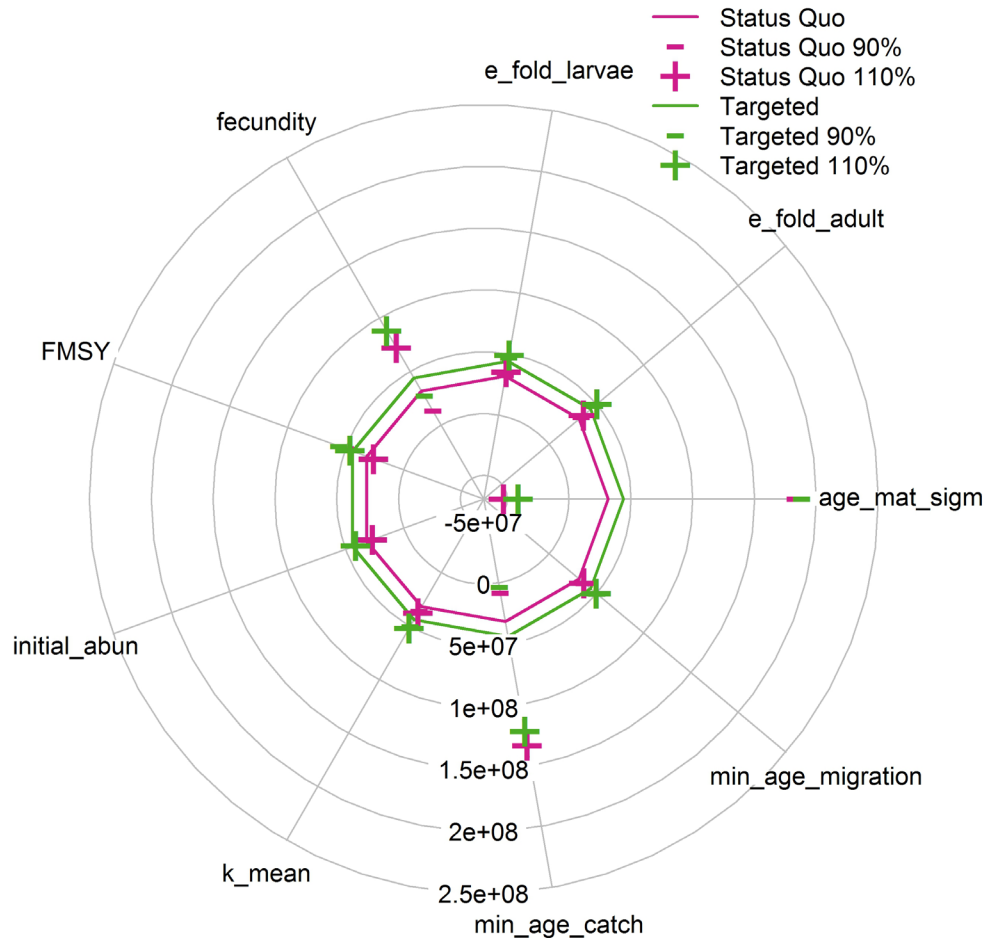


Figure 7. Effect of 10%* increase or decrease of select model parameters on mean final net present value for the full 50 year time horizon with a social discount rate of 0.015. Dotted line indicates the mean value with unaltered parameters. * parameters 'min_age_migration' and 'min_age_catch' are integer values, therefore sensitivity was determined using ± 1 y. Parameters and their values are defined in Table 3.

Status Quo scenario produces a higher NPV than does the Targeted scenario.

Discussion

These findings suggest that well-designed MPA networks can provide net benefits to the fishing industry, while poorly designed networks can have some deleterious effects, such as an increased probability of moratoriums. This dichotomy highlights the importance of objectively measuring outcomes when evaluating management options. Our R package provides an ideal platform for such studies since it is open source and adaptable. The user can simply input a different set of biological parameters, study area, or fisheries parameters to evaluate similar management scenarios on a different species, or area. Given that spatially explicit population models

for multiple species are critical to properly evaluate MPA network design (Moffitt *et al.*, 2011), we have designed our package so that the biological parameters are easy to modify. At the next level of complexity, the user can create customized functions that create management scenarios or input predefined management scenarios by supplying the necessary shapefiles containing geospatial vector data. Finally, the user can edit whole modules or sub-modules if they wish to explore specific questions such as the effect of non-random dispersal or interactions between species. It is worth noting, however, that adding complexity such as evaluating multiple species at one time would require substantially higher computational power. As a result, simplification in some other areas of the model may be necessary if computational power is a limiting factor.

In terms of network design principles, adding MPAs consistently increased the biomass, but not all MPA networks were equal in terms of Net Present Value. Well-connected MPA network design is thought to reduce population demographic variability by diversifying the potential source populations (Andrello *et al.*, 2015; Costello & Polasky, 2008; Cowen & Sponaugle, 2009). Correspondingly, our results indicate that abiding to principles of connectivity (Fixed Distance scenarios) and protecting productive habitats (Targeted scenarios) increases the NPV by ensuring well-connected populations. By combining the positive effects of population connectivity, protection of vital habitats, and near-shore source habitats, the Targeted scenario provides the greatest net benefit to the fishing industry.

Intuitively, we expected to see mean fishing distance from shore increase in scenarios with MPAs since we assumed fishermen would be displaced by the presence of MPAs. Our findings were entirely contradictory to these expectations. In all scenarios with MPAs, mean fishing distance from shore decreases relative to the Status Quo since MPAs in our model promote the presence of near-shore source populations that cannot be depleted by fishing. In these scenarios, fishermen spend less on fuel and labour since they do not travel as far. It should be noted here that our model currently assumes that fishermen can have a home port anywhere on the shoreline, which minimizes displacement in our model. In reality, there will be much greater social, economic, and logistical constraints on MPA placement. However, our model has the ability to assess the economic and ecological consequences of any arrangement of MPAs that managers determine to be feasible.

The efficacy of any MPA network is greatly influenced by the level of compliance among commercial fishermen in that region (McClanahan, 1999). For this reason, we conducted this cost-benefit analysis from the operational point of view (i.e., both the costs and benefits are directly connected to the commercial fishery). As a result, the model outcome is most relevant to the fishermen and can help to make a case for compliance. Mascia (2003) recommended that one measure of performance for an MPA should be how well it enhances the livelihoods of fishermen. Therefore, we should describe the net benefits as they relate to the people most immediately affected by the new MPA network.

A complete evaluation of all costs and benefits associated with MPA networks is beyond the scope of this study. The model does not include other benefits associated with expanding the MPA network. Indeed, benefits are not limited to only increasing fisheries' profits via increasing yields. Other benefits include job creation related to recreational fisheries or tourism and maintaining other ecosystem services; the value of which exceeds that of the commercial fisheries itself (Agardi, 1997; Armstrong, 2007; Ghermandi & Nunes, 2013; Lester *et al.*, 2009; Pendleton *et al.*, 2012). In early iterations of the model, we included the costs of establishing and maintaining the MPAs, but the NPV estimates were consistently negative and large. This is to be expected since we are not considering the full suite of benefits listed above. A full treatment of costs and benefits would provide important information for governments seeking to

justify the large expense associated with MPAs and would therefore be a rich area for future development.

One trend made clear in our results is that the benefits are realized on long time scales. Fishermen must follow the restrictions for up to 20 years before the net benefits of the Targeted scenario clearly surpass those of the Status Quo. This requires patience and a commitment to preserving a resource for future generations, particularly in the face of inevitable uncertainty in how the cod population will respond along the way. The standard market discount rate tends to be impatient and may not be appropriate for valuing future ecosystem services with high cultural value. If the environmental outcome will affect multiple people and generations, there is a higher social value placed on the service (Hardisty & Weber, 2009). Therefore, it is justified to apply a lower social discount rate when evaluating future costs and benefits. Social discount rate can have a strong influence on the recommendations from cost-benefit analysis. With increasing discount rates, there is less incentive to preserve fish stocks to generate future profits (Sanichirico *et al.*, 2006). In our study, the net benefits of the enhanced MPA network scenarios are diminished when SDR >3%. Similarly, Zimmermann *et al.* (2015) found that the difference in NPV between their fishery models was indistinguishable at discount rates >5%.

Sound reserve design has potential for directly enhancing fisheries and preserving sensitive species. Additionally, evidence shows that paying attention to the network design can make populations more resilient to both natural and anthropogenic disturbances. For example, networks can be tailored to better cope with the threats imposed by ongoing climate change (McLeod *et al.*, 2009). Specifically, a system's resilience could be enhanced by considering MPAs' size, shape, risk spreading (i.e., protection of a variety of habitat types), protection of ecologically critical areas, degree of connectivity, maintenance of important functional groups, and external sources of stress like pollution (Green *et al.*, 2015; McLeod *et al.*, 2009). These aspects can be addressed in the model presented here via some shape of a Targeted scenario, which again lends support to this management strategy.

Our modeling results suggested that the capacity for Atlantic cod populations to significantly recover densities comparable to those observed before the 1960s is limited in every management scenario considered. Similarly, one study reported that only one of 12 stocks of Northwest Atlantic cod analyzed showed 'substantial recovery', despite moratoria and fishing quota restrictions established after mid 1990s (Shelton *et al.*, 2006). Another study by Swain & Chouinard (2008) predicted extinction of cod within the next 20 years (with fishing) or 40 years (without fishing) given the current levels of productivity. As argued by Shelton *et al.* (2006) the low productivity in cod populations documented after the big collapse, as indicated by higher natural mortalities and reduced growth rates (Swain *et al.*, 2003), might hinder recovery along with the negative impacts of continuing fishery practices. Although our results are consistent with this previous work, our model makes multiple simplifying assumptions about biotic (e.g. ecological interactions) and abiotic (e.g. oceanographic processes) variables

that can drive population dynamics and potentially contribute to ecosystem regime shifts. Additionally, our model does not predict any extinctions using the current parameters- possibly because we did not incorporate an Allee effect at low population densities (Stephens & Sutherland, 1999).

While our model currently provides interesting results regarding MPA design, there are some key aspects to consider when interpreting these findings. This model only considers the interaction between the fishing industry and a single commercial species. This removes possibly important interactions with cod predators (Cook *et al.*, 2015), competitors (Minto & Worm, 2012), or prey (Worm & Myers, 2003). We believe that by choosing a relatively high natural mortality rate that reflects the new ecological reality (Swain & Chouinard, 2008), we have incorporated the bulk of these ecosystem effects. We have considered both larval and adult dispersal to be entirely random in the model, which neglects potentially important oceanographic, migratory, and homing behaviours (Green *et al.*, 2014; Lawson & Rose, 2000). Similarly, carrying capacity is randomly generated from a realistic distribution, which ignores the true spatial subtleties of actual cod habitat. However, much of the information needed to incorporate such spatially explicit behaviours and habitats is currently unavailable. Our focus on a single species also eliminates the possibility of a mixed species fishery or evaluating the consequences of switching to alternative species (e.g., crab, and shrimp, and lobster). Although testing multiple species simultaneously was beyond our scope, other studies have employed different techniques for doing so. White *et al.* (2010) calculated unweighted means across species for both recruitment and yield, as well as weighted means that represented the relative commercial landings of each species. Sala *et al.* (2002) incorporated data from seven commercially important species and then used optimization algorithms to choose the most effective combination of MPAs.

In conclusion, the fishing industry stands to benefit financially from well-designed MPA networks (e.g., the Targeted scenario) through increased yields, lower operating costs for the commercial fishermen, and a lower probability of a moratorium. Under scenarios with new MPAs some traditional fishing locations may have been closed, thereby displacing fishing efforts. However, the spill-over effects of the well-designed MPA networks more than compensated for any displacement by providing near-shore source populations and ultimately decreased mean fishing distance from shore. Further, targeted protection of adult habitat can produce long-term financial benefits that exceed those associated with the other simulated MPA network scenarios. These findings demonstrate the power and

flexibility of our spatially explicit package in assessing the costs and benefits of different MPA network designs.

Data and software availability

The tabulated output for the model is available at <https://doi.org/10.5281/zenodo.260444>

Software access

The R toolkit can be accessed and downloaded at <https://github.com/remi-daigle/BESTMPA>

Archived source code as at the time of publication

<https://doi.org/10.5281/zenodo.259997>

Software license

Published under the MIT license.

Author contributions

RD designed and built the software package. CM and AE reviewed the literature to parameterize the package. RD conceived the initial concept, but all authors contributed significantly to the development of the study. All authors were involved in the revision of the draft manuscript, and have agreed to the final content.

Competing interests

No competing interests were disclosed.

Grant information

This manuscript is the product of a collaboration formed during the Ecological Dissertations in the Aquatic Sciences (Eco-DAS) XI Symposium in October 2014 at the University of Hawai`i in Honolulu. Eco-DAS XI funding was provided by the National Science Foundation (NSF Award #1356792). Eco-DAS XI was sponsored by the Center for Microbial Oceanography: Research and Education (C-MORE), the University of Hawai`i School of Ocean and Earth Science and Technology (SOEST) and the UH Department of Oceanography.

I confirm that the funders had no role in study design, data collection and analysis, decision to publish, or preparation of the manuscript.

Acknowledgements

We would like to especially acknowledge the organizers of Eco-DAS XI, Paul Kemp and Lydia Baker for their great work and thoughtful comments on this manuscript. We also thank Ryan Stanley for providing helpful feedback that greatly improved the manuscript. This is GLERL Contribution No. 1791.

Supplementary material

Appendix Figures A1–99.

Map of eastern Canadian EEZ (Exclusive Economic Zone) and examples of different scenarios for the planning of Marine Protected Areas (MPAs). The “Status Quo” scenario (purple) has all existing MPAs ≥ 400 km². The MPAs in the “Maximum Distance” scenario (green) have been placed to maximize the distance between them. The MPAs in the “Fixed Distance” scenario (red) have been placed to optimize the distance between them (~75km). The cod’s breeding locations in the “Targeted” scenarios (blue) have been protected by default and optimal distance MPAs have been added exclusively in habitat suitable for cod. Scenarios from replicate 2–100, and replicate 1 is available in [Figure 2](#).

[Click here to access the data.](#)

[Click here to access the data.](#)

References

- Agardi TS: **Marine protected areas and ocean conservation**. Academic Press, 1997.
[Reference Source](#)
- Allison GW, Gaines SD, Lubchenco J, *et al.*: **Ensuring persistence of marine reserves: Catastrophes require adopting an insurance factor**. *Ecol Appl*. 2003; **13**: 8–24.
[Publisher Full Text](#)
- Andrello M, Jacobi MN, Manel S, *et al.*: **Extending networks of protected areas to optimize connectivity and population growth rate**. *Ecography*. 2015; **38**: 273–282.
[Publisher Full Text](#)
- Armstrong CW: **A note on the ecological-economic modelling of marine reserves in fisheries**. *Ecol Econ*. 2007; **62**(2): 242–250.
[Publisher Full Text](#)
- Arrow K, Cropper M, Gollier C, *et al.*: **Environmental economics. Determining benefits and costs for future generations**. *Science*. 2013; **341**(6144): 349–350.
[PubMed Abstract](#) | [Publisher Full Text](#)
- Avasthi A: **Ecosystem management. California tries to connect its scattered marine reserves**. *Science*. 2005; **308**(5721): 487–488.
[PubMed Abstract](#) | [Publisher Full Text](#)
- Ball IR, Possingham HP, Watts M: **Marxan and relatives: Software for spatial conservation prioritisation**. Chapter 14: In *Spatial conservation prioritisation: Quantitative methods and computational tools*. Eds Moilanen A, KA Wilson, and HP Possingham. Oxford University Press, Oxford, UK. 2009; 185–195.
[Reference Source](#)
- Balmford A, Gravestock P, Hockley N, *et al.*: **The worldwide costs of marine protected areas**. *Proc Natl Acad Sci U S A*. 2004; **101**(26): 9694–9697.
[PubMed Abstract](#) | [Publisher Full Text](#) | [Free Full Text](#)
- Bellier E, Neubauer P, Monestiez P, *et al.*: **Marine reserve spillover: Modelling from multiple data sources**. *Ecol Inform*. 2013; **18**: 188–193.
[Publisher Full Text](#)
- Brander K, Hurley PC: **Distribution of early-stage Atlantic cod (*Gadus morhua*), haddock (*Melanogrammus aeglefinus*), and witch flounder (*Glyptocephalus cynoglossus*) eggs on the Scotian Shelf: a reappraisal of evidence on the coupling of cod spawning and plankton production**. *Can J Fish Aquat Sci*. 1992; **49**(2): 238–251.
[Publisher Full Text](#)
- Cook RM, Holmes SJ, Fryer RJ: **Grey seal predation impairs recovery of an over-exploited fish stock**. *J Appl Ecol*. 2015; **52**(4): 969–979.
[Publisher Full Text](#)
- Costello C, Polasky S: **Optimal harvesting of stochastic spatial resources**. *J Environ Econ Manage*. 2008; **56**(1): 1–18.
[Publisher Full Text](#)
- Cowen RK, Sponaugle S: **Larval dispersal and marine population connectivity**. *Ann Rev Mar Sci*. 2009; **1**: 443–466.
[PubMed Abstract](#) | [Publisher Full Text](#)
- Crowder LB, Lyman SJ, Figueira WF, *et al.*: **Source-sink population dynamics and the problem of siting marine reserves**. *B Mar Sci*. 2000; **66**(3): 799–820.
[Reference Source](#)
- Daigle R, Monaco C, Elgin AK: **Bio Economic Selection Tool for Marine Protected Areas (BESTMPA) R package**. *Zenodo*. 2017a.
[Publisher Full Text](#)
- Daigle R, Monaco C, Elgin AK: **Data from: An adaptable toolkit to assess commercial fishery costs and benefits related to marine protected area network design [Data set]**. *Zenodo*. 2017b.
[Publisher Full Text](#)
- Department of Fisheries and Oceans Canada (DFO): **2004 Cost and Earning Survey: Atlantic Region Report**. 2007.
[Reference Source](#)
- Department of Fisheries and Oceans Canada (DFO): **Commercial Fisheries Landings Reports**. 2015.
[Reference Source](#)
- Devillers R, Pressey RL, Grech A, *et al.*: **Reinventing residual reserves in the sea: are we favouring ease of establishment over need for protection?** *Aquat Conserv*. 2015; **25**(4): 480–504.
[Publisher Full Text](#)
- DFO: **Stock Assessment of NAFO Subdivision 3Ps Cod**. *Can Sci Advis Sec Sci Advis Rep*. 2014; 001.
[Reference Source](#)
- Feeckings J, Lewy P, Madsen N, *et al.*: **The effect of regulation changes and influential factors on Atlantic cod discards in the Baltic Sea demersal trawl fishery**. *Can J Fish Aquat Sci*. 2013; **70**(4): 534–542.
[Publisher Full Text](#)
- Gaines SD, White C, Carr MH, *et al.*: **Designing marine reserve networks for both conservation and fisheries management**. *Proc Natl Acad Sci U S A*. 2010; **107**(43): 18286–18293.
[PubMed Abstract](#) | [Publisher Full Text](#) | [Free Full Text](#)
- Game ET, Grantham HS, Hobday AJ, *et al.*: **Pelagic protected areas: the missing dimension in ocean conservation**. *Trends Ecol Evol*. 2009; **24**(7): 360–369.
[PubMed Abstract](#) | [Publisher Full Text](#)
- Ghermandi A, Nunes PA: **A global map of coastal recreation values: Results from a spatially explicit meta-analysis**. *Ecol Econ*. 2013; **86**: 1–15.
[Publisher Full Text](#)
- Green AL, Fernandes L, Almany G, *et al.*: **Designing Marine Reserves for Fisheries Management, Biodiversity Conservation, and Climate Change Adaptation**. *Coast Manage*. 2014; **42**(2): 143–159.
[Publisher Full Text](#)
- Green AL, Maypa AP, Almany GR, *et al.*: **Larval dispersal and movement patterns of coral reef fishes, and implications for marine reserve network design: Connectivity and marine reserves**. *Biol Rev Camb Philos Soc*. 2015; **90**(4): 1215–47.
[PubMed Abstract](#) | [Publisher Full Text](#)
- Grüss A, Kaplan DM, Guénette S, *et al.*: **Consequences of adult and juvenile movement for marine protected areas**. *Biol Conserv*. 2011; **144**(2): 692–702.
[Publisher Full Text](#)
- Halpern BS: **The impact of marine reserves: do reserves work and does reserve size matter?** *Ecol Appl*. 2003; **13**: 117–137.
[Publisher Full Text](#)
- Hamilton LC, Butler M: **Outport adaptations: Social indicators through Newfoundland’s cod crisis**. *Hum Ecol Rev*. 2001; **8**(2): 1–11.
[Reference Source](#)
- Hardisty DJ, Weber EU: **Discounting future green: money versus the environment**. *J Exp Psychol Gen*. 2009; **138**(3): 329–340.
[PubMed Abstract](#) | [Publisher Full Text](#)
- Hastings A, Botsford LW: **Comparing designs of marine reserves for fisheries and for biodiversity**. *Ecol Appl*. 2003; **13**: 65–70.
[Publisher Full Text](#)
- Hutchings JA, Myers RA: **What can be learned from the collapse of a renewable resource? Atlantic cod, *Gadus morhua*, of Newfoundland and Labrador**. *Can J Fish Aquat Sci*. 1994; **51**(9): 2126–2146.
[Publisher Full Text](#)
- Kellner JB, Tetreault I, Gaines SD, *et al.*: **Fishing the line near marine reserves in single and multispecies fisheries**. *Ecol Appl*. 2007; **17**(4): 1039–1054.
[PubMed Abstract](#) | [Publisher Full Text](#)
- Kinlan BP, Gaines SD: **Propagule dispersal in marine and terrestrial environments: a community perspective**. *Ecology*. 2003; **84**: 2007–2020.
[Publisher Full Text](#)
- Knickle DC, Rose GA: **Comparing growth and maturity of sympatric Atlantic (*Gadus morhua*) and Greenland (*Gadus ogac*) cod in coastal Newfoundland**.

Can J Zool. 2013; **91**(9): 672–677.

[Publisher Full Text](#)

Laurel BJ, Bradbury IR: **“Big” concerns with high latitude marine protected areas (MPAs): trends in connectivity and MPA size.** *Can J Fish Aquat Sci.* 2006; **63**(12): 2603–2607.

[Publisher Full Text](#)

Lawson GL, Rose GA: **Seasonal distribution and movements of coastal cod (*Gadus morhua* L.) in Placentia Bay, Newfoundland.** *Fish Res.* 2000; **49**(1): 61–75.

[Publisher Full Text](#)

Lester SE, Halpern BS, Grorud-Colvert K, *et al.*: **Biological effects within no-take marine reserves: a global synthesis.** *Mar Ecol Prog Ser.* 2009; **384**: 33–46.

[Publisher Full Text](#)

Levin LA: **Recent progress in understanding larval dispersal: new directions and digressions.** *Integr Comp Biol.* 2006; **46**(3): 282–297.

[PubMed Abstract](#) | [Publisher Full Text](#)

Lupi F, Hoehn JP, Christie GC: **Using an Economic Model of Recreational Fishing to Evaluate the Benefits of Sea Lamprey (*Petromyzon marinus*) Control on the St. Marys River.** *J Great Lakes Res.* 2003; **29**(Suppl 1): 742–754.

[Publisher Full Text](#)

Mascia MB: **The human dimension of coral reef marine protected areas: recent social science research and its policy implications.** *Conserv Biol.* 2003; **17**(2): 630–632.

[Publisher Full Text](#)

McClanahan TR: **Is there a future for coral reef parks in poor tropical countries?** *Coral Reefs.* 1999; **18**(4): 321–325.

[Publisher Full Text](#)

McLeod E, Salm R, Green A, *et al.*: **Designing marine protected area networks to address the impacts of climate change.** *Front Ecol Environ.* 2009; **7**(7): 362–370.

[Publisher Full Text](#)

Minto C, Worm B: **Interactions between small pelagic fish and young cod across the North Atlantic.** *Ecology.* 2012; **93**(10): 2139–2154.

[PubMed Abstract](#) | [Publisher Full Text](#)

Moffett A, Garson J, Sarkar S: **MultCSync: a software package for incorporating multiple criteria in conservation planning.** *Environ Model Softw.* 2005; **20**(10): 1315–1322.

[Publisher Full Text](#)

Moffitt EA, Wilson White J, Botsford LW: **The utility and limitations of size and spacing guidelines for designing marine protected area (MPA) networks.** *Biol Conserv.* 2011; **144**(1): 306–318.

[Publisher Full Text](#)

Mountain D, Green J, Sibunka J, *et al.*: **Growth and mortality of Atlantic cod *Gadus morhua* and haddock *Melanogrammus aeglefinus* eggs and larvae on Georges Bank, 1995 to 1999.** *Mar Ecol Prog Ser.* 2008; **353**: 225–242.

[Publisher Full Text](#)

Myers RA, MacKenzie BR, Bowen KG, *et al.*: **What is the carrying capacity for fish in the ocean? A meta-analysis of population dynamics of North Atlantic cod.** *Can J Fish Aquat Sci.* 2001; **58**(7): 1464–1476.

[Publisher Full Text](#)

Otterå H: **Cultured Aquatic Species Information Programme. *Gadus morhua*.** In: *FAO Fisheries and Aquaculture Department.* [online]. Rome, 2004.

[Reference Source](#)

Palumbi SR: **Marine reserves and ocean neighborhoods: The spatial scale of marine populations and their management.** *Annu Rev Environ Resour.* 2004; **29**: 31–68.

[Publisher Full Text](#)

Pendleton L, Donato DC, Murray BC, *et al.*: **Estimating global “blue carbon” emissions from conversion and degradation of vegetated coastal ecosystems.** *PLoS One.* 2012; **7**(9): e43542.

[PubMed Abstract](#) | [Publisher Full Text](#) | [Free Full Text](#)

Sala E, Aburto-Oropeza O, Paredes G, *et al.*: **A general model for designing networks of marine reserves.** *Science.* 2002; **298**(5600): 1991–1993.

[PubMed Abstract](#) | [Publisher Full Text](#)

Sanchirico JN, Malvadkar U, Hastings A, *et al.*: **When are no-take zones an economically optimal fishery management strategy?** *Ecol Appl.* 2006; **16**(5): 1643–1659.

[PubMed Abstract](#) | [Publisher Full Text](#)

Schrank WE, Roy N: **The Newfoundland Fishery and Economy Twenty Years after the Northern Cod Moratorium.** *Mar Resour Econ.* 2013; **28**(4): 397–413.

[Publisher Full Text](#)

Shanks AL, Grantham BA, Carr MH: **Propagule dispersal distance and the size and spacing of marine reserves.** *Ecol Appl.* 2003; **13**: S159–S169.

[Publisher Full Text](#)

Shelton PA, Sinclair AF, Chouinard GA, *et al.*: **Fishing under low productivity conditions is further delaying recovery of Northwest Atlantic cod (*Gadus morhua*).** *Can J Fish Aquat Sci.* 2006; **63**(2): 235–238.

[Publisher Full Text](#)

Stephens PA, Sutherland WJ: **Consequences of the Allee effect for behaviour, ecology and conservation.** *Trends Ecol Evol.* 1999; **14**(10): 401–405.

[PubMed Abstract](#) | [Publisher Full Text](#)

Swain DP, Chouinard GA: **Predicted extirpation of the dominant demersal fish in a large marine ecosystem: Atlantic cod (*Gadus morhua*) in the southern Gulf of St. Lawrence.** *Can J Fish Aquat Sci.* 2008; **65**(11): 2315–2319.

[Publisher Full Text](#)

Swain DP, Sinclair AF, Castonguay M, *et al.*: **Density-versus temperature-dependent growth of Atlantic cod (*Gadus morhua*) in the Gulf of St. Lawrence and on the Scotian Shelf.** *Fish Res.* 2003; **59**(3): 327–341.

[Publisher Full Text](#)

UNEP-CBD: **Convention on biological diversity - Strategic plan for biodiversity 2011–2020: Further information related to the technical rationale for the aichi biodiversity targets, including potential indicators and milestones.** United Nations Environment Programme. 2011.

[Reference Source](#)

UNEP-WCMC: **Sourcebook of opportunities for enhancing cooperation among the Biodiversity-related Conventions at national and regional levels.** United Nations Environment Programme. 2015.

[Reference Source](#)

White JW, Botsford LW, Moffitt EA, *et al.*: **Decision analysis for designing marine protected areas for multiple species with uncertain fishery status.** *Ecol Appl.* 2010; **20**(6): 1523–41.

[PubMed Abstract](#) | [Publisher Full Text](#)

White JW, Rassweiler A, Samhouri JF, *et al.*: **Ecologists should not use statistical significance tests to interpret simulation model results.** *Oikos.* 2014; **123**(4): 385–388.

[Publisher Full Text](#)

White JW, Scholz AJ, Rassweiler A, *et al.*: **A comparison of approaches used for economic analysis in marine protected area network planning in California.** *Ocean Coast Manag.* 2013; **74**: 77–89.

[Publisher Full Text](#)

Wood LJ, Fish L, Laughren J, *et al.*: **Assessing progress towards global marine protection targets: shortfalls in information and action.** *Oryx.* 2008; **42**(3): 340–351.

[Publisher Full Text](#)

Worm B, Myers RA: **Meta-analysis of cod-shrimp interactions reveals top-down control in oceanic food webs.** *Ecology.* 2003; **84**: 162–173.

[Publisher Full Text](#)

Zimmermann F, Jørgensen C, Wilberg M: **Bioeconomic consequences of fishing-induced evolution: a model predicts limited impact on net present value.** *Can J Fish Aquat Sci.* 2015; **72**(4): 612–624.

[Publisher Full Text](#)

Open Peer Review

Current Peer Review Status:  

Version 2

Reviewer Report 03 March 2017

<https://doi.org/10.5256/f1000research.11621.r20466>

© 2017 **Andrello M.** This is an open access peer review report distributed under the terms of the [Creative Commons Attribution License](#), which permits unrestricted use, distribution, and reproduction in any medium, provided the original work is properly cited.



Marco Andrello

Centre of Evolutionary and Functional Ecology, EPHE Laboratory “Biogeography and Ecology of Vertebrates, CEFE UMR 5175, CNRS, University of Montpellier, Montpellier, France

I would like to thank the authors for this excellent revised version and for having addressed all my previous comments. This paper present a very useful toolkit for assessing different spatial scenarios of fisheries management, including the creation of marine protected areas. The proposed case study on Atlantic cod illustrates the potential of the toolkit and the results are discussed thoroughly.

The sensitivity analysis shows the importance of some parameters for the model results. In particular, it shows that when minimum age of catch is increased by one year, the Status Quo scenario produces a higher NPV than does the Targeted scenario. This seems an important result: if I understand correctly, it could imply that setting a higher age at catch would ensure an optimal management of the fishery and achieve better economic results than creating MPAs according to a targeted scenario. This might discourage further developments and extension of the current MPA system. However, as the authors state in this article, there are multiple benefits associated with the creation of MPAs, such as the ease of implementation relatively to some fishery regulation (would it be possible to set precisely a minimum age of maturation?) and compliance (would it be easy to control that the minimum age is respected?). I think that the final decision process will be complex and beyond the scope of this case-study presentation, for which the authors have already provided an ample discussion.

Some minor points:

- In the “Population dynamics” section the term “fisherman” is used as singular (twice) where it should be plural (“fishermen”), please check and correct.
- Table 1. It seems that the legend has a mistake for the moratorium part? At least, it should say that “moratorium” is a percent occurrence probability (if I understand correctly)

Thanks for this useful and nice contribution.

Competing Interests: No competing interests were disclosed.

I confirm that I have read this submission and believe that I have an appropriate level of expertise to confirm that it is of an acceptable scientific standard.

Version 1

Reviewer Report 25 January 2016

<https://doi.org/10.5256/f1000research.7880.r11831>

© 2016 Andrelo M. This is an open access peer review report distributed under the terms of the [Creative Commons Attribution License](#), which permits unrestricted use, distribution, and reproduction in any medium, provided the original work is properly cited.

**Marco Andrelo**

Centre of Evolutionary and Functional Ecology, EPHE Laboratory "Biogeography and Ecology of Vertebrates, CEFE UMR 5175, CNRS, University of Montpellier, Montpellier, France

As a referee, I am asked to comment on "whether the work has been well designed, executed and discussed, not whether it is of importance or particular novelty". The toolkit is presented quite clearly. The purpose of this article was also to assess the management of cod. A positive point of this point is the ability to assess the economic and ecological consequences of MPAs spatial planning. I like this point very much.

This article lacks a sensitivity analysis of the model results to all the parameters used in the model. Many parameters are uncertain, so a sensitivity analysis will be helpful. Also, you should not use an ANOVA to examine simulation results (see White *et al.* 2014¹).

There are other points that should be addressed:

- Egg production (0.5 million eggs per kg of female) is missing a reference.
- Is the random walk for larval dispersal and adult movement realistic?
- A beta distribution for larval mortality seems fine; but a normal distribution for adult mortality can give values above 1 or below 0, which is problematic.
- Why was the size distribution of the newly generated MPAs based on that of the World Database of Protected Areas? Existing protected areas are not optimally sized.
- The maximum distance scenario is the best in terms of biomass. Is there a "dramatic" increase in this scenario? Biomass attains more 100 kT in 2043 (the decreases). Compared to biomass in the other scenarios, this increase is relevant; What about the historical biomass?
- It is not clear to me how the profitability ratio works.
- Please define the summary statistics used in Table 1. What are "distance" and "moratorium"? Are values averaged over the fifty years (2000-2050)?

I do not have a sufficient level of expertise to evaluate the Cost-benefit analysis.

References

1. White J, Rassweiler A, Samhouri J, Stier A, White C: Ecologists should not use statistical significance tests to interpret simulation model results. *Oikos*. 2014; **123** (4): 385-388 [Publisher Full Text](#)

Competing Interests: No competing interests were disclosed.

I confirm that I have read this submission and believe that I have an appropriate level of expertise to confirm that it is of an acceptable scientific standard, however I have significant reservations, as outlined above.

Author Response 22 Feb 2017

Remi Daigle, University of Toronto, Toronto, Canada

"As a referee, I am asked to comment on "whether the work has been well designed, executed and discussed, not whether it is of importance or particular novelty". The toolkit is presented quite clearly. The purpose of this article was also to assess the management of cod. A positive point of this point is the ability to assess the economic and ecological consequences of MPAs spatial planning. I like this point very much.

This article lacks a sensitivity analysis of the model results to all the parameters used in the model. Many parameters are uncertain, so a sensitivity analysis will be helpful. Also, you should not use an ANOVA to examine simulation results (see White et al. 2014¹)."

- **Sensitivity Analysis:** We agree that, in light of parameter estimate uncertainty, sensitivity analysis was an important addition to this study. We modified select parameters by $\pm 10\%$ (or ± 1 y for integer values) for 25 replicate model runs and then compared the mean final net present value for the full 50 year time horizon to that of the full model ($n = 100$) in order to quantify influence of that parameter estimate on model output. We did this using the social discount rate of 0.015 because this is the value for which differences among the scenarios are most pronounced. We also focused only on the Targeted and Status Quo scenarios because they are the most extreme scenarios. We discovered that the most sensitive parameters are minimum age of catch and fecundity.
- **Use of ANOVA:** We removed any reference to the ANOVA. Instead we report Error statistics (mean absolute error, Root mean error, and mean absolute percent error)

"There are other points that should be addressed:"

- *Egg production (0.5 million eggs per kg of female) is missing a reference.*

- **We included a new reference (Otterå, 2004) to support this parameter value.**

- *"Is the random walk for larval dispersal and adult movement realistic?"*

- **Not quite, it does not really respect possible home ranges (adherence to an area), but it is scaled to real movement patterns. The random walk is the simplest approximation, and we make it possible for the users to use the best available connectivity information. This could be data from tagging, bio-physical models, or in the absence of more accurate data, the user can simply use a random walk.**

- "A beta distribution for larval mortality seems fine; but a normal distribution for adult mortality can give values above 1 or below 0, which is problematic."

- **We have added a step that eliminates any values above 1 or below 0 ($M < M[M \leq 1 \& M \geq 0]$) which given the cod parameters was exceedingly rare.**

- "Why was the size distribution of the newly generated MPAs based on that of the World Database of Protected Areas? Existing protected areas are not optimally sized."

- **Andrello brings up an excellent point that the existing MPAs are not optimally sized. However, our intent of drawing from the existing size distribution was to work within the bounds set by previous management decisions. Our assumption here is that decision makers would consider the size of the MPA selected as reasonable based on precedent set in other areas. We revised the text at the end of the "Management strategies scenarios" section to reflect our rationale.**

- "The maximum distance scenario is the best in terms of biomass. Is there a "dramatic" increase in this scenario? Biomass attains more 100 kT in 2043 (the decreases). Compared to biomass in the other scenarios, this increase is relevant; What about the historical biomass?"

- **We had problems with the "virtual_fish_ratio" of the original model, where 1 'virtual' fish represented 20000 real fish. This led to unnecessary variability in the results. The model has been redesigned and the "virtual_fish_ratio" has been eliminated making the new version a truly individual based model. The biomass for the maximum distance scenario is not as high with the new model.**

- "It is not clear to me how the profitability ratio works."

- **We revised the description to clarify how the profitability ratio was calculated (see first paragraph of the "Management strategies scenario" section. In the process, we discovered we had neglected to include one of the necessary citations, which is now added to the the References section.**

- "Please define the summary statistics used in Table 1. What are "distance" and "moratorium"? Are values averaged over the fifty years (2000-2050)?"

- **We have edited the table legend to address these questions.**

Competing Interests: No competing interests were disclosed.

Reviewer Report 03 December 2015

<https://doi.org/10.5256/f1000research.7880.r11198>

© 2015 Peres-Neto P. This is an open access peer review report distributed under the terms of the [Creative Commons Attribution License](#), which permits unrestricted use, distribution, and reproduction in any medium, provided the original work is properly cited.



Pedro Peres-Neto

Department of Biological Sciences, Université du Québec à Montréal, Montréal, Québec, Canada

This paper reports a quantitative tool that can be used to analyze the economical impact of different network designs for marine protected areas. The framework is quite flexible and will provide a useful toolkit for discussing the pros and cons of different designs. That said, I feel that it considered very little discussion regarding other potential algorithms and also how to consider multiple species at the same time. In particular, would the authors suggest to model different species separately and then build a consensus across different MPA designs? Some discussion on this issue would be particularly important. Another issue is environmental heterogeneity. I think it would be important that the authors at least discuss how environmental heterogeneity should be taken into account in designing MPA across different scenarios. Large habitat heterogeneity within a given area or across areas would certainly lead to different design decisions than small heterogeneity. How does the matrix and quality of corridors should be considered. In sum, I think this is a much needed tool but the authors need to provide some additional information on how they see it being applied considering multiple species and environmental heterogeneity.

Competing Interests: No competing interests were disclosed.

I confirm that I have read this submission and believe that I have an appropriate level of expertise to confirm that it is of an acceptable scientific standard.

Author Response 22 Feb 2017

Remi Daigle, University of Toronto, Toronto, Canada

- In response to multiple species: The modular design of the tool kit could allow users to add this level of complexity if so desired, but the current structure would require higher computational power to run a multiple species model. We address this at the end of the first discussion paragraph.
- Although we are not evaluating multiple species in this paper, we provide some citations and descriptions of approaches tried by other researchers. (See Discussion Paragraph 9.)
- We have modified the model so that habitat carrying capacity is now a customizable input. While our paper does not focus on the issue of habitat heterogeneity, the BESTMPA package could now be used to investigate this question.

Competing Interests: No competing interests were disclosed.=

Comments on this article

Version 1

Author Response 02 Dec 2015

Remi Daigle, University of Toronto, Toronto, Canada

We forgot to give our toolbox a name: BEST-MPA = Bio-Economic Selection Toolbox for Marine Protected Areas

Competing Interests: No competing interests were disclosed.

The benefits of publishing with F1000Research:

- Your article is published within days, with no editorial bias
- You can publish traditional articles, null/negative results, case reports, data notes and more
- The peer review process is transparent and collaborative
- Your article is indexed in PubMed after passing peer review
- Dedicated customer support at every stage

For pre-submission enquiries, contact research@f1000.com

F1000Research