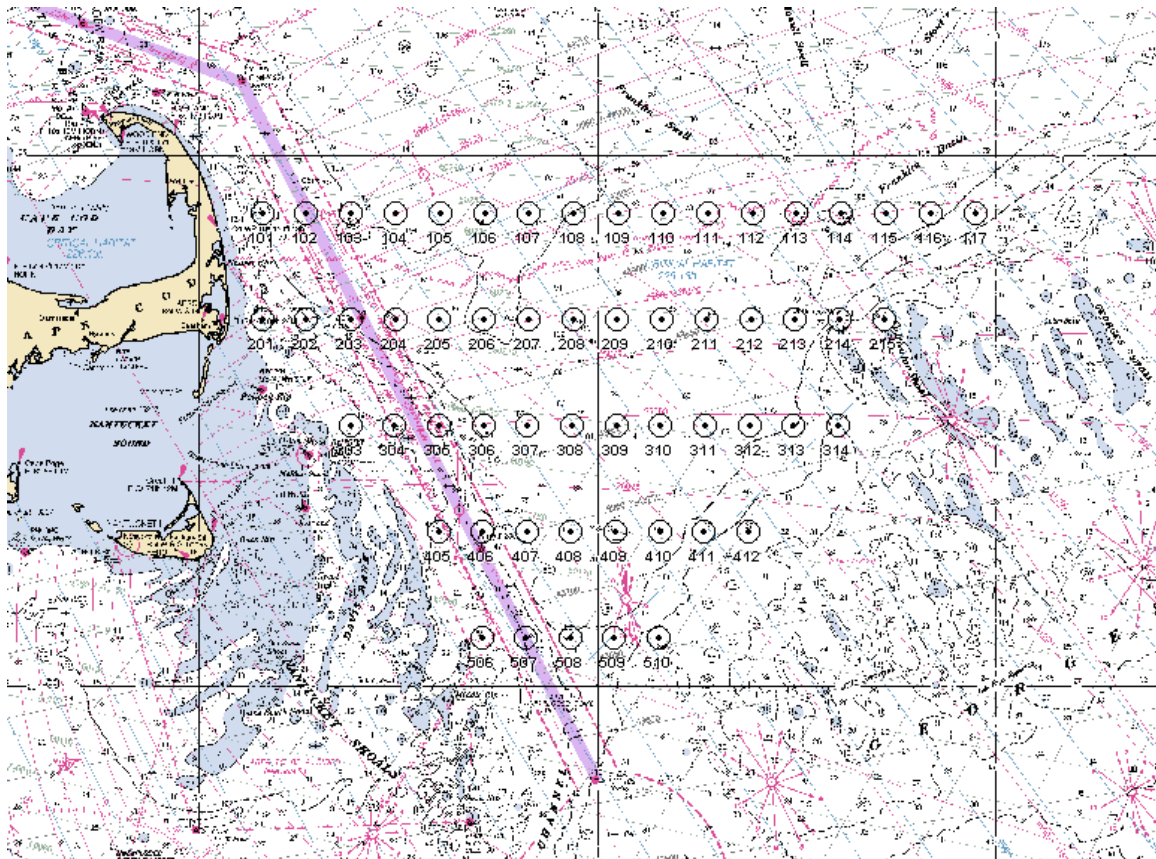
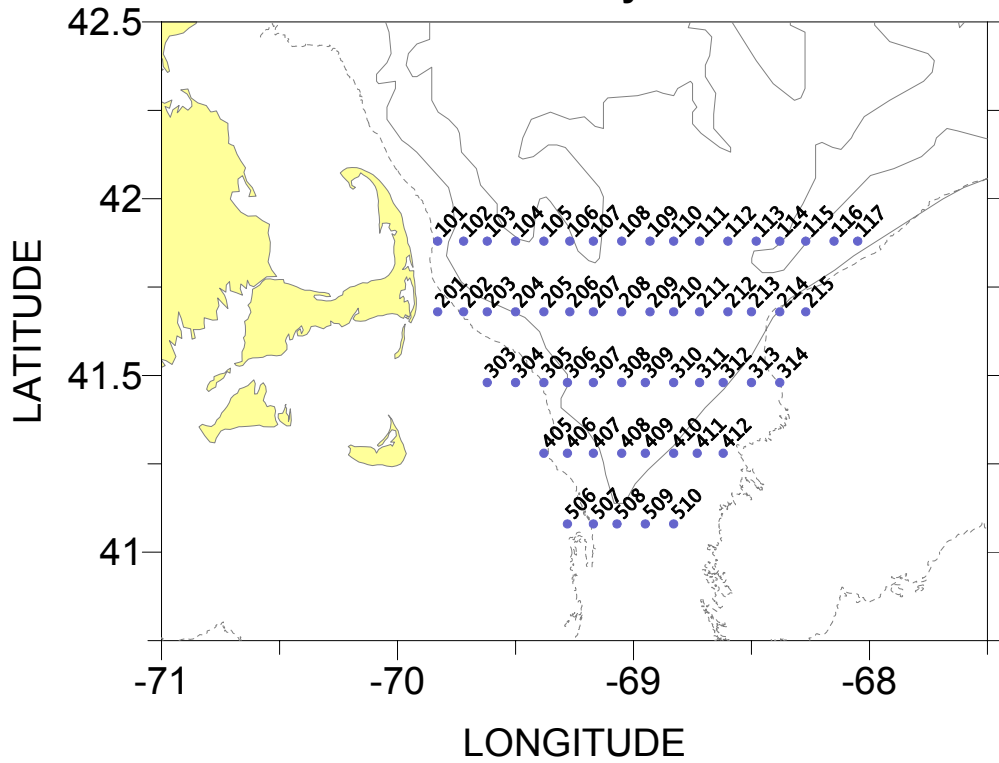


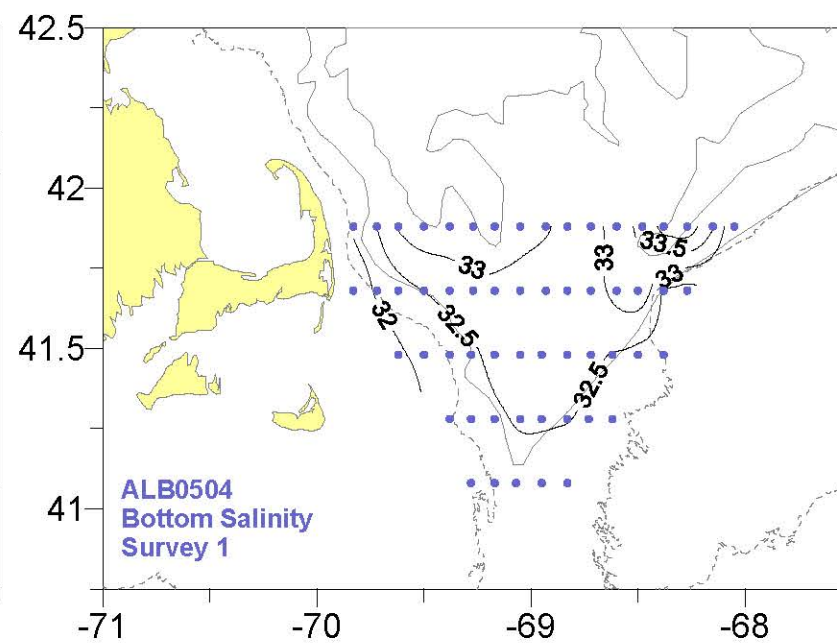
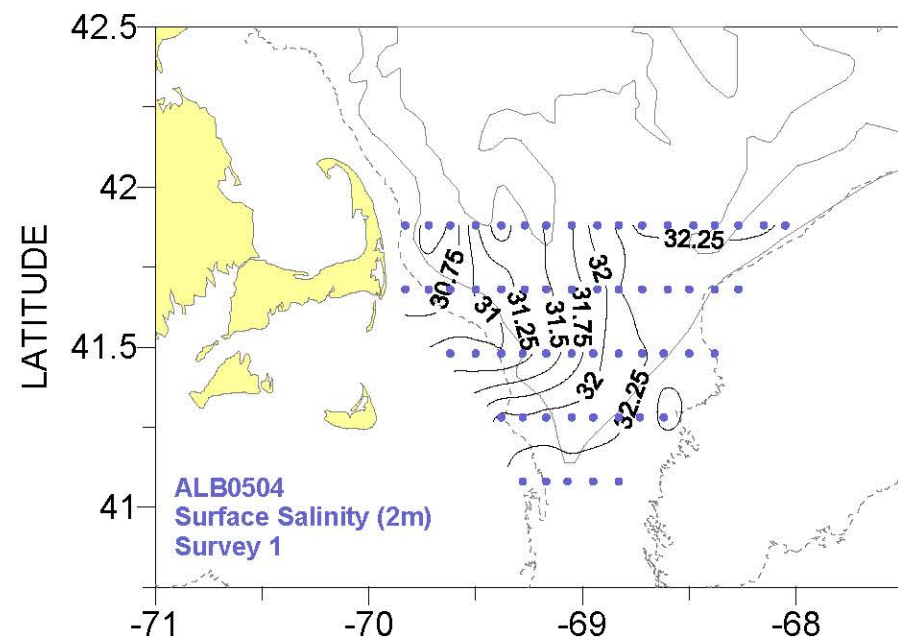
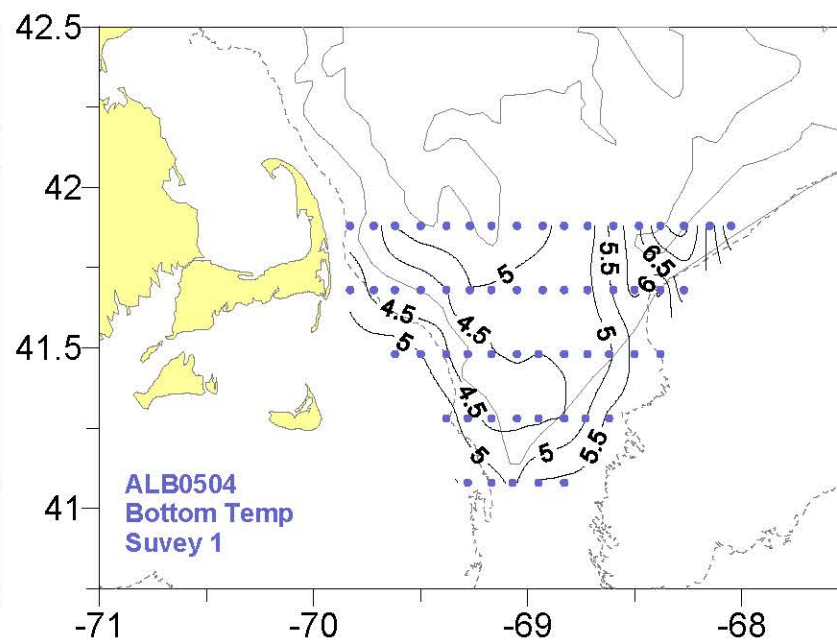
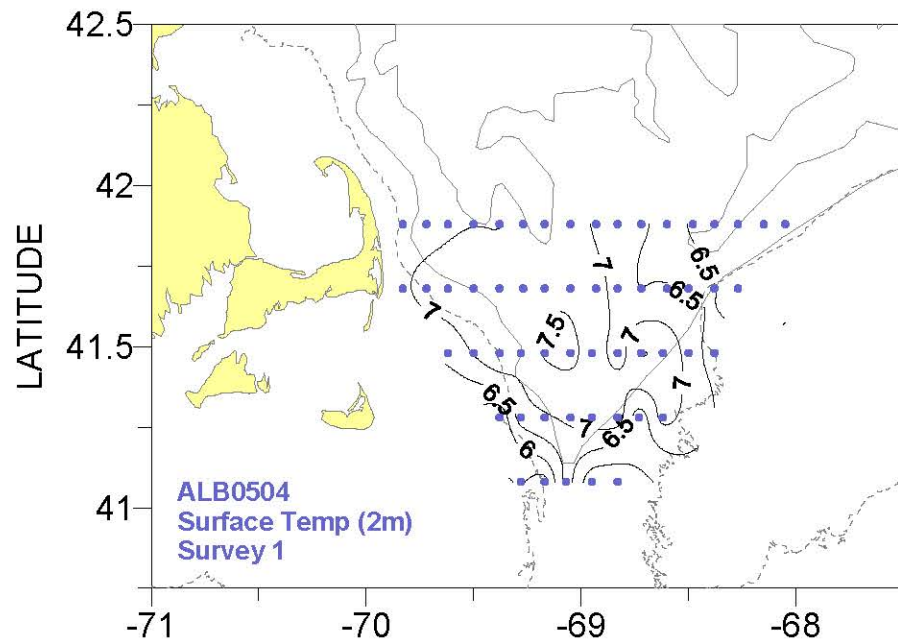
Oceanography Branch CTD Data Report
CTD_REPORT_2005004AL

**For further information, contact M Taylor
National Marine Fisheries Service,
Northeast Fisheries Science Center,
Woods Hole, Massachusetts 02543-1097.**

DATE: 2005

ALB0504 Survey Stations



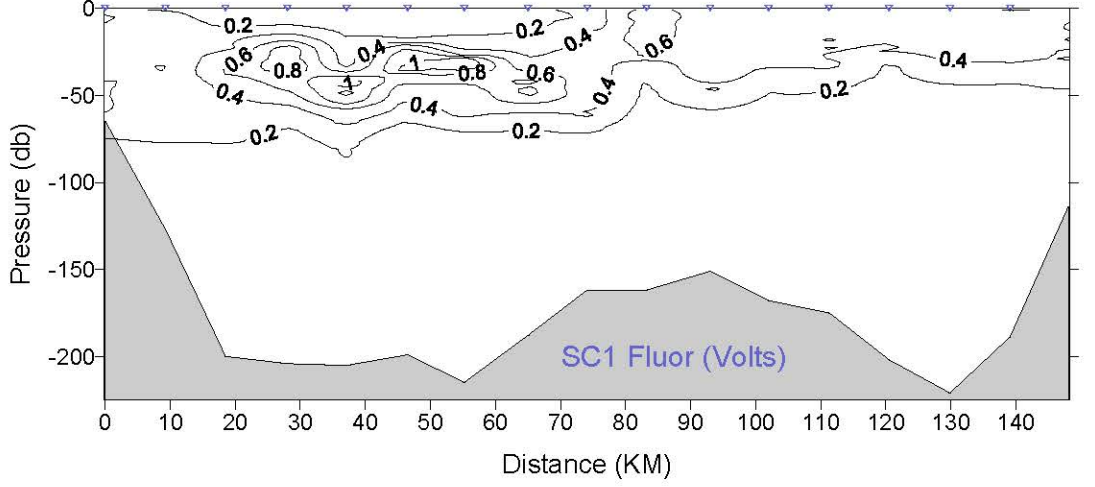
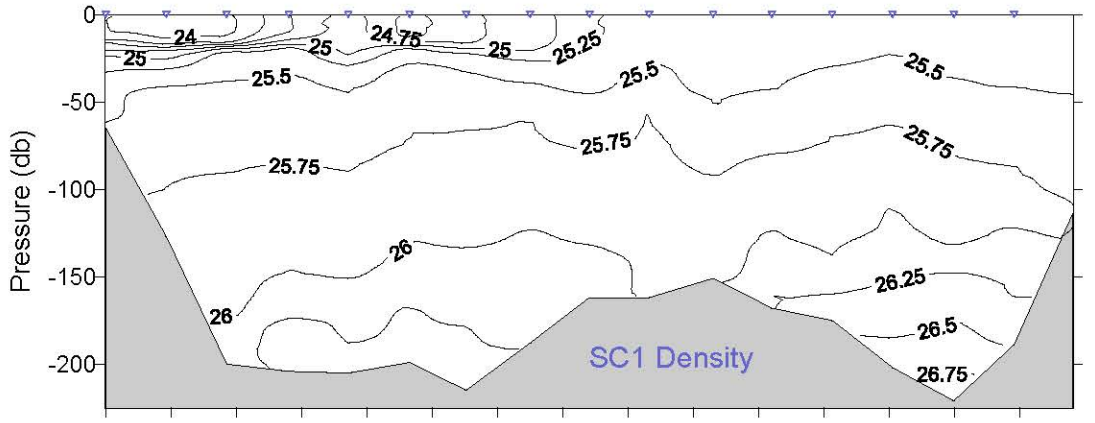
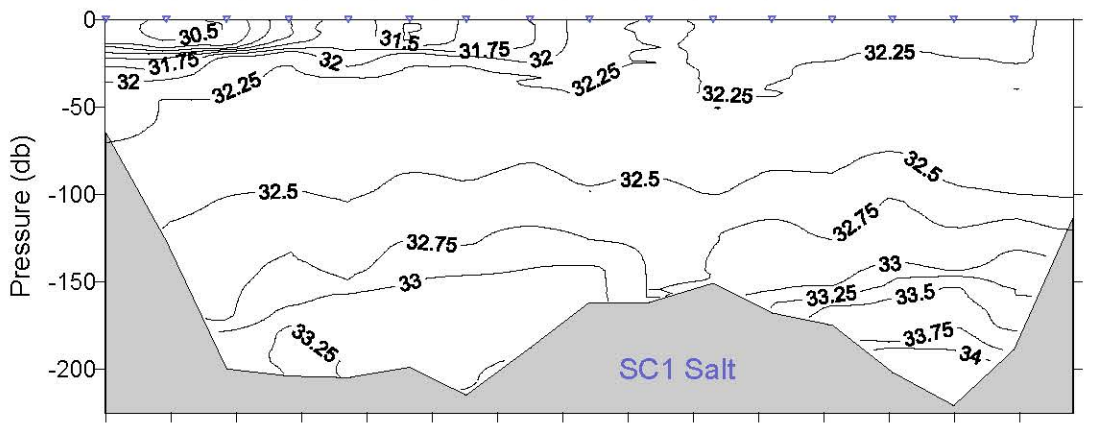
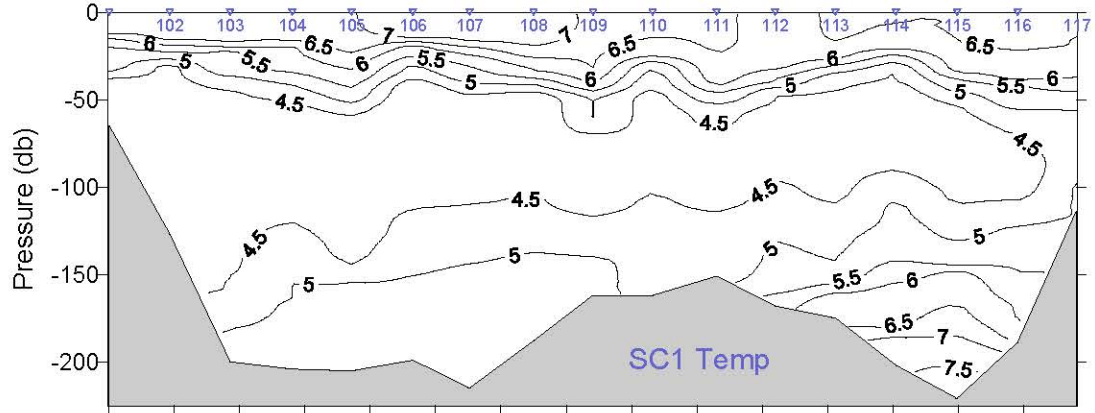


LONGITUDE

LONGITUDE

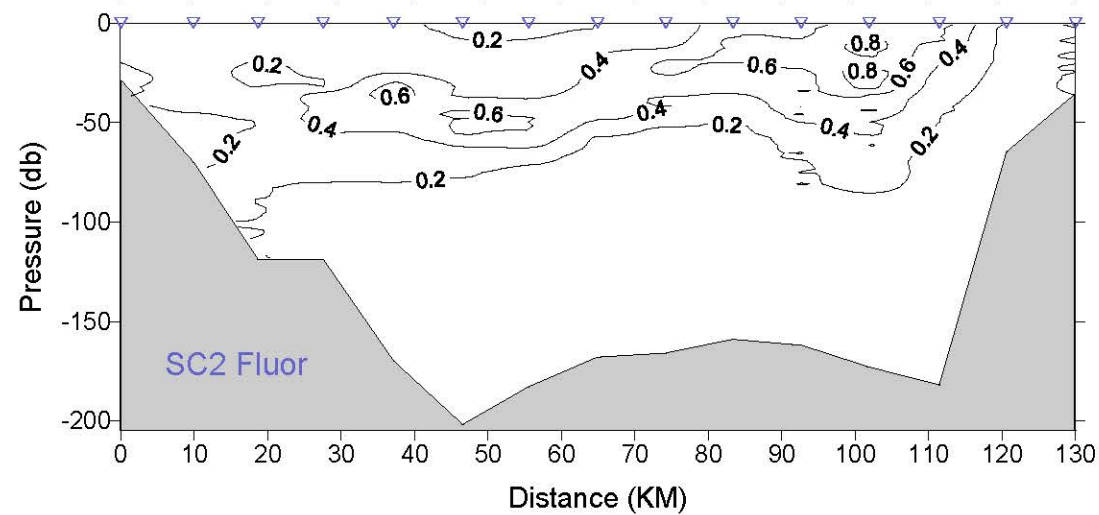
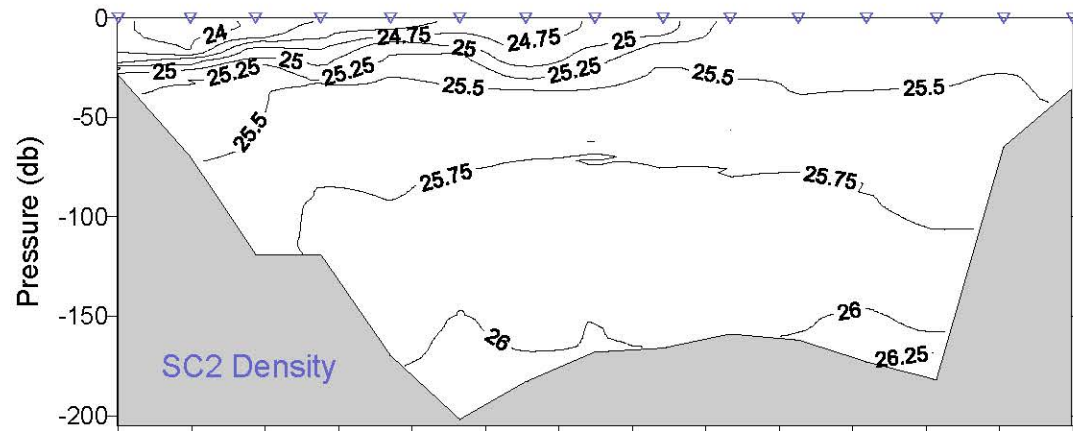
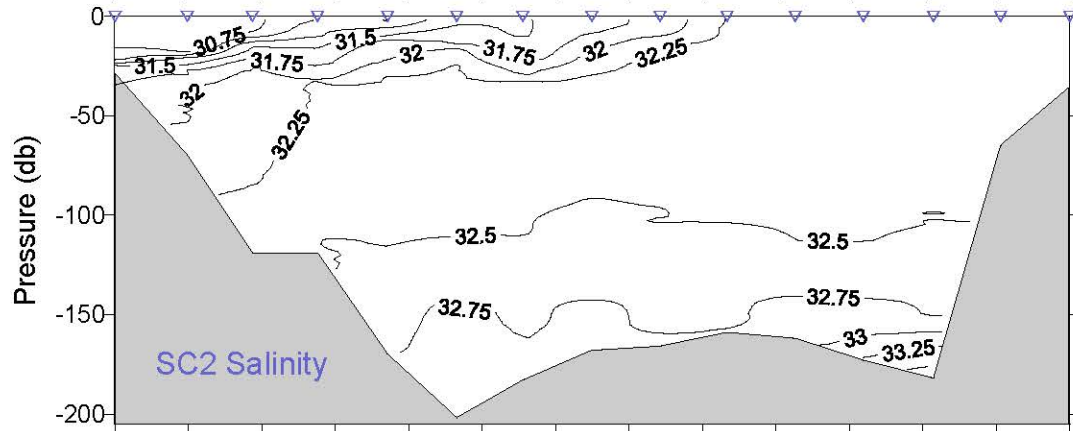
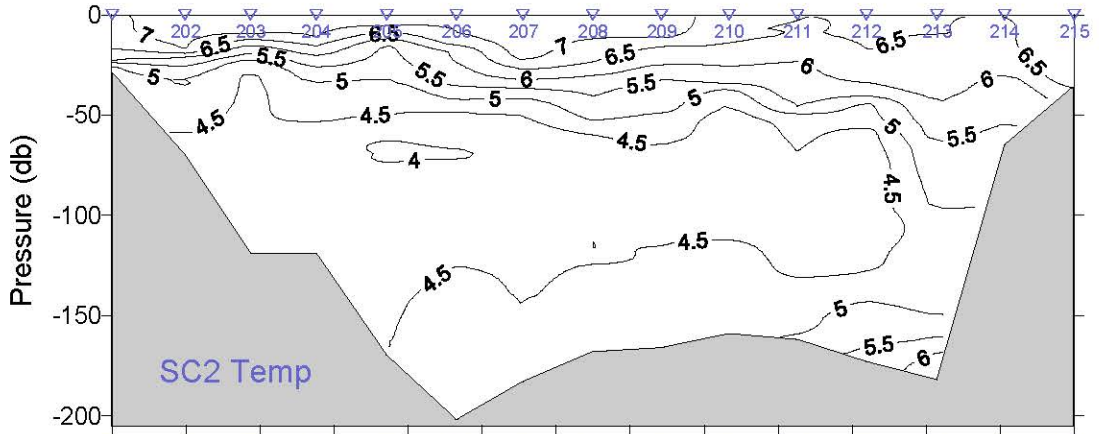
4/29/05 13:48 GMT

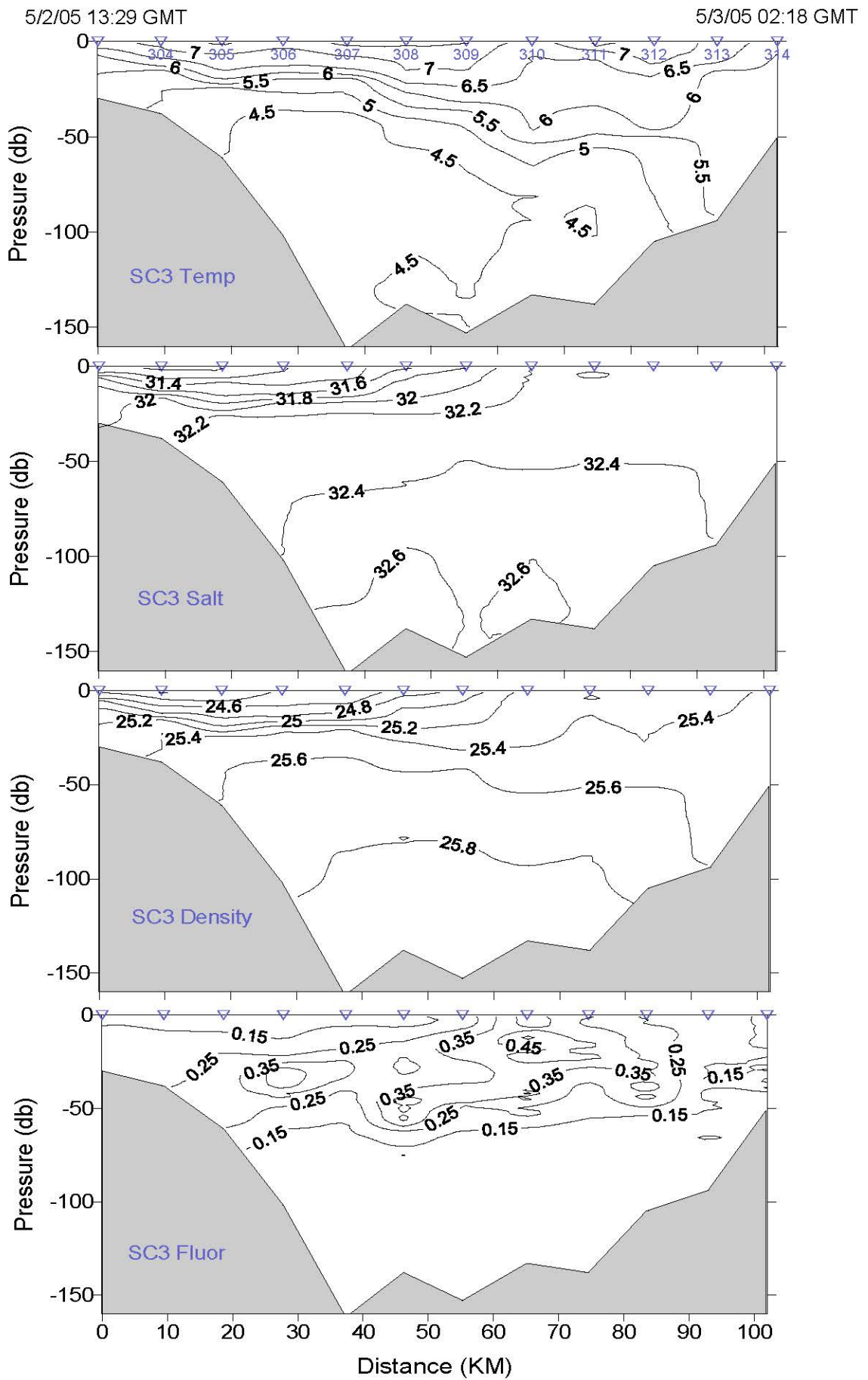
4/30/05 05:15 GMT



4/30/05 19:18 GMT

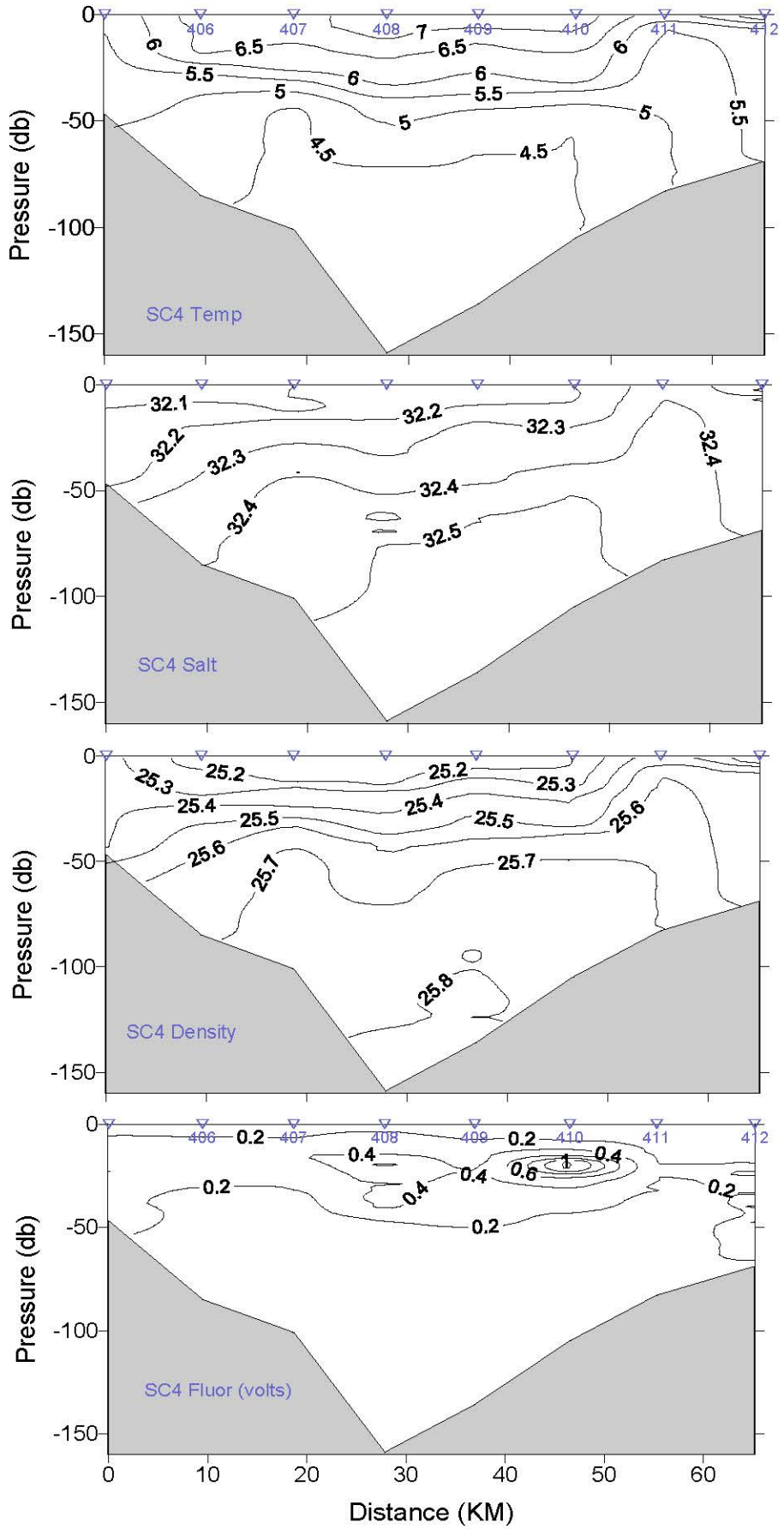
4/30/05 07:19 GMT





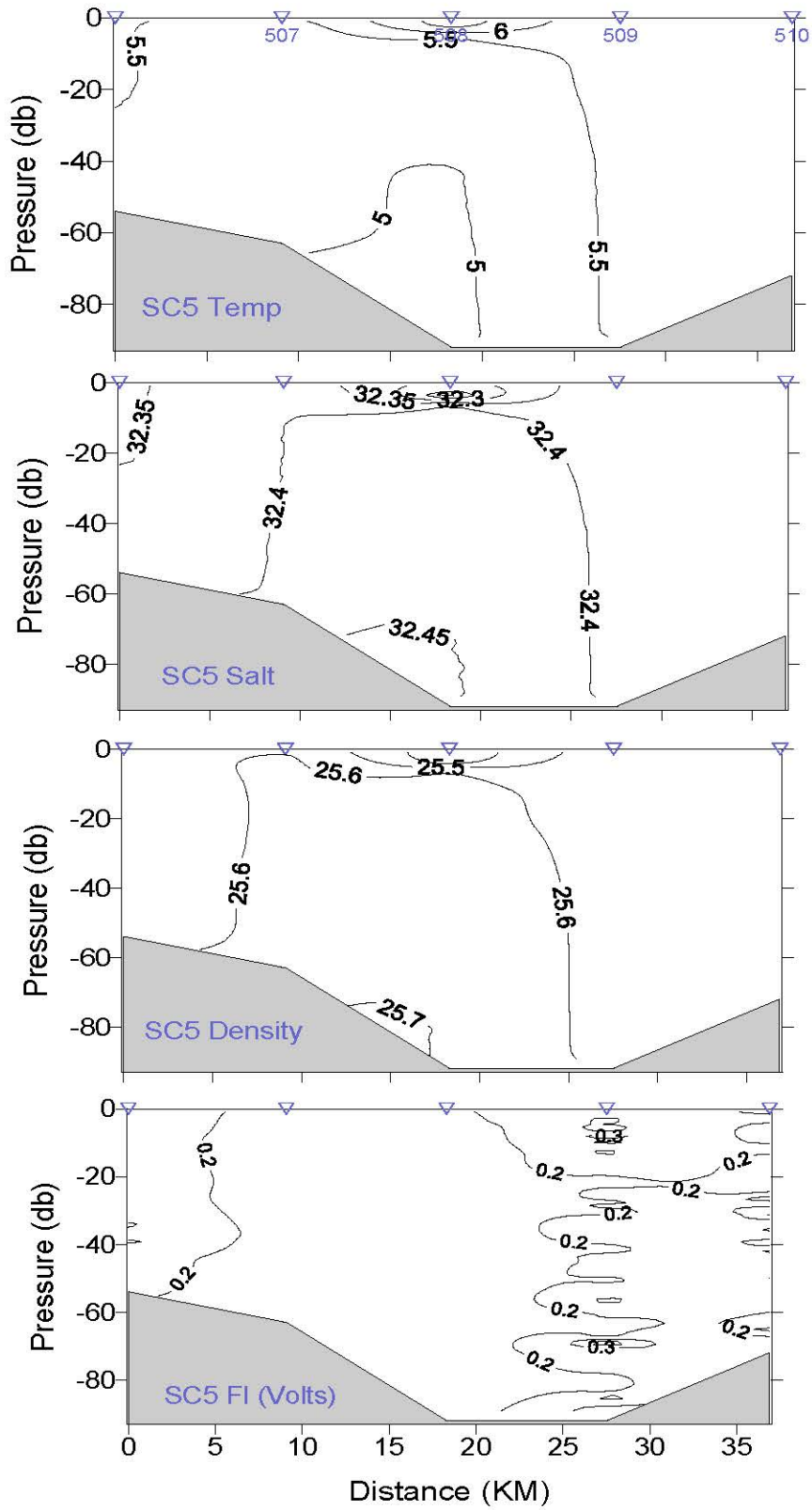
5/3/05 11:24 GMT

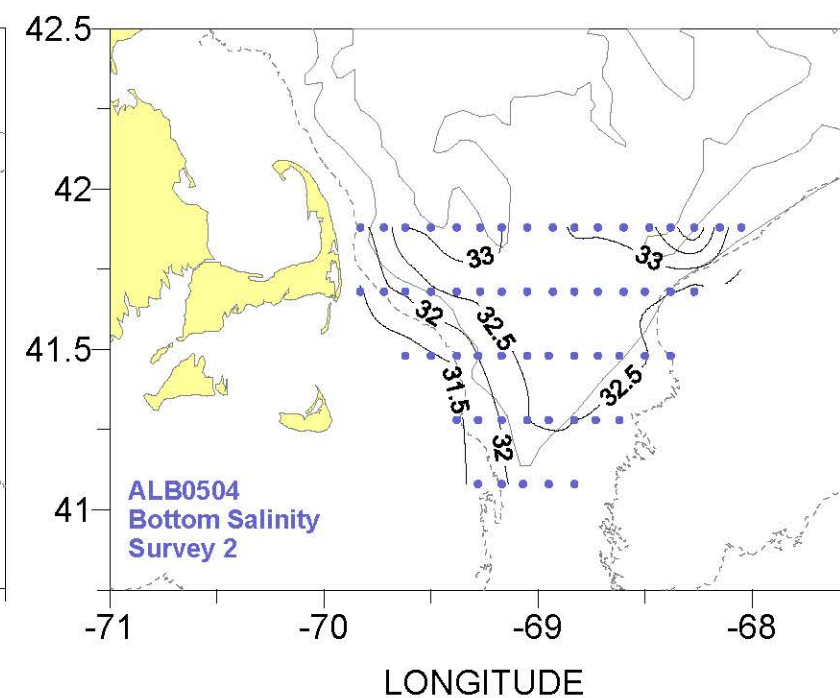
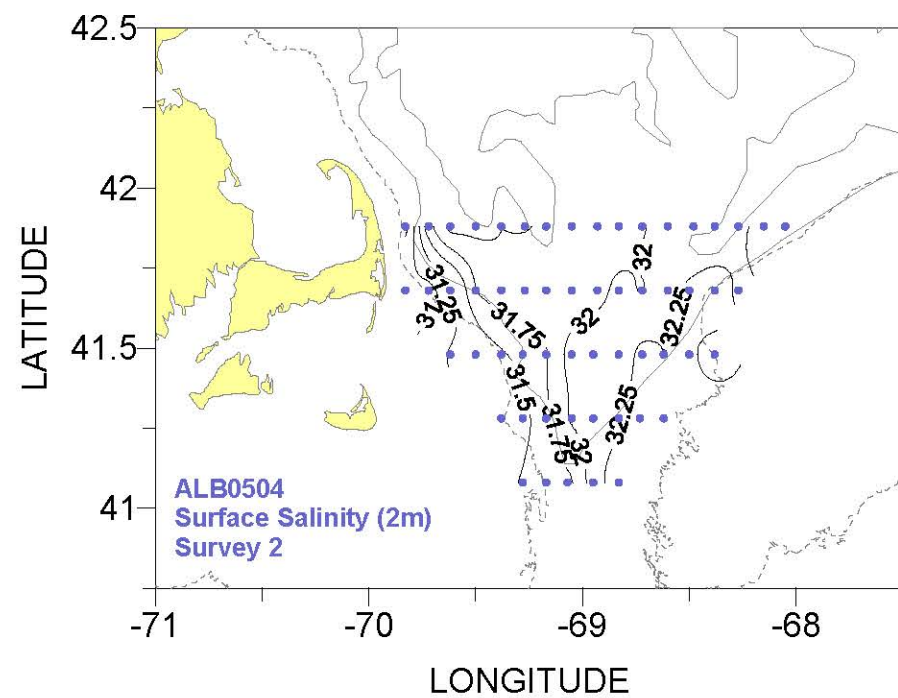
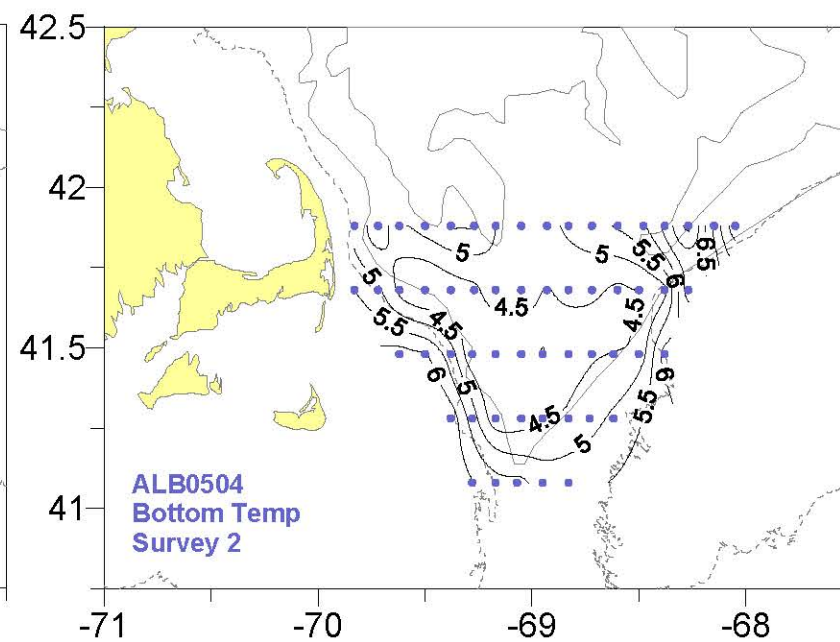
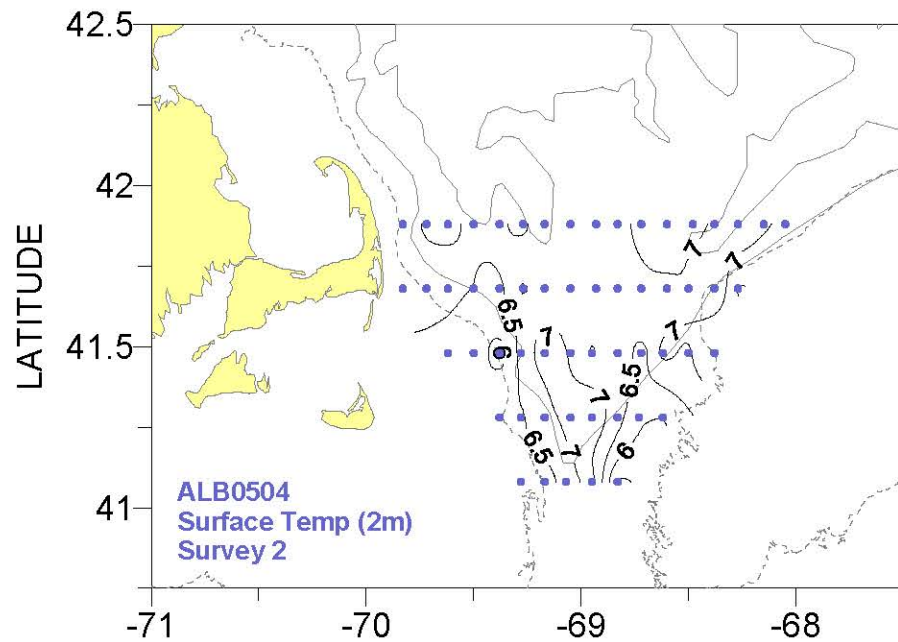
5/3/05 17:13 GMT



5/3/05 09:01 GMT

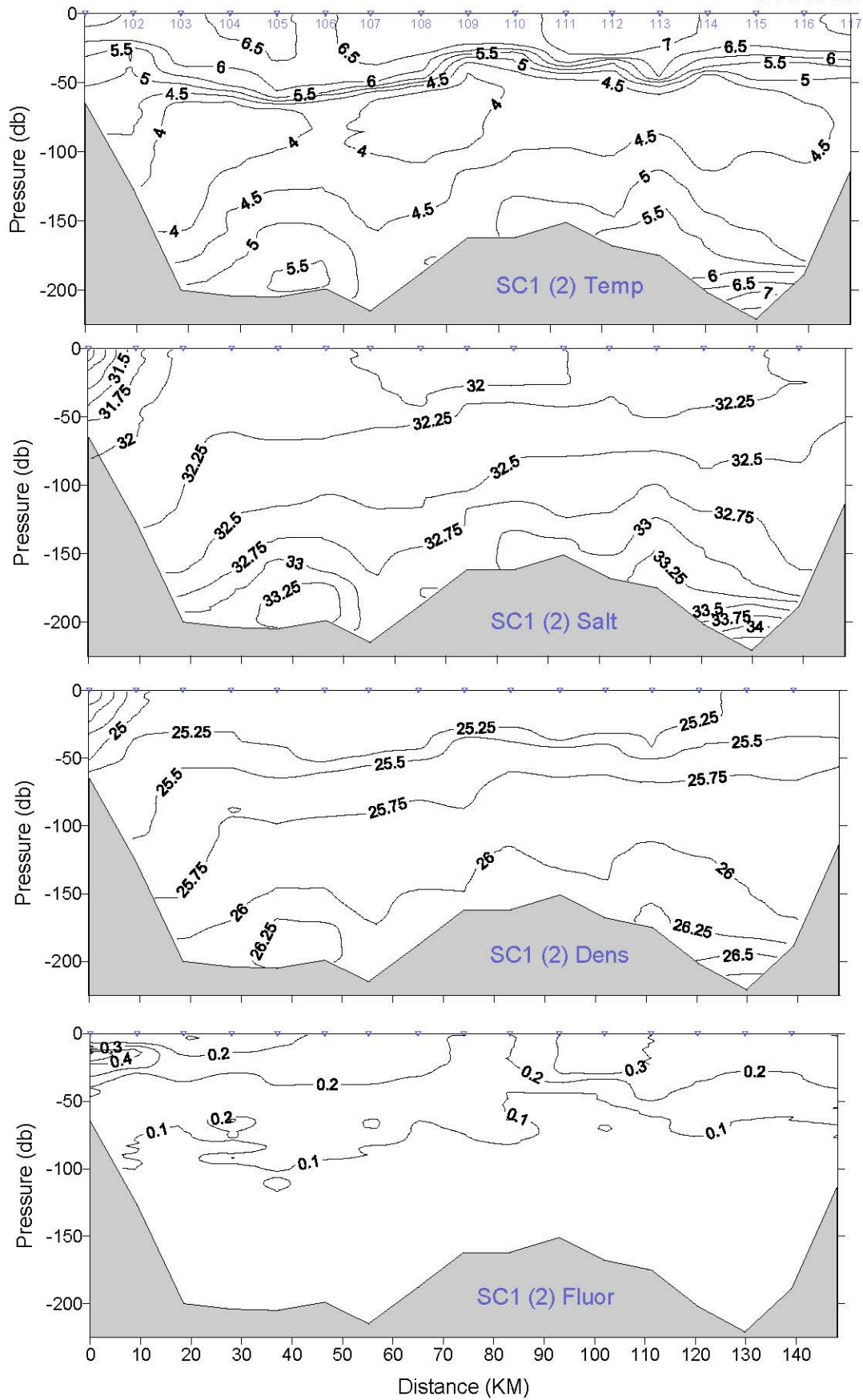
5/3/05 05:46 GMT





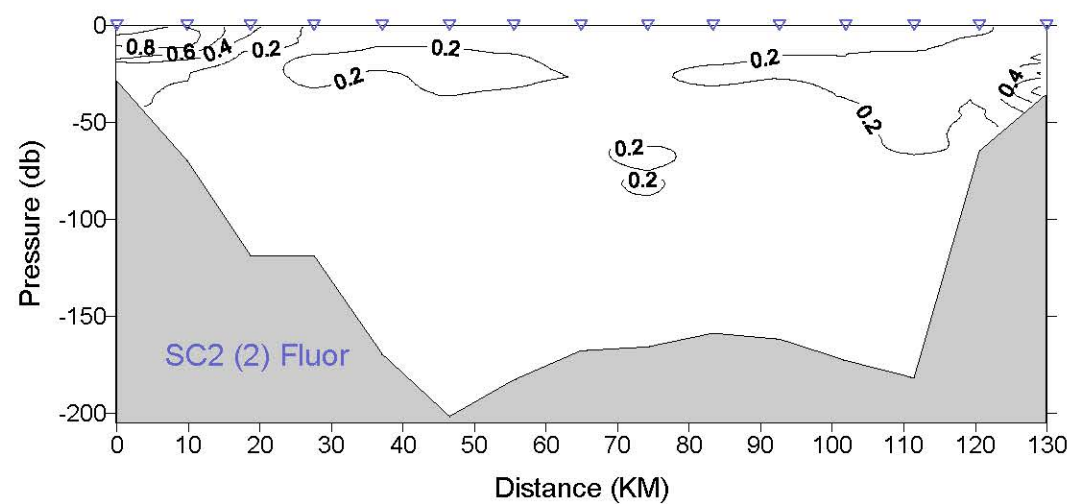
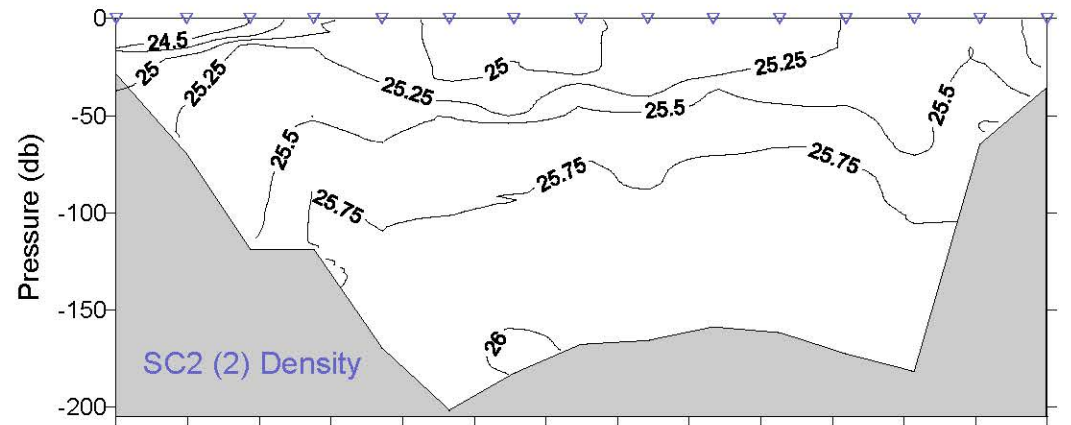
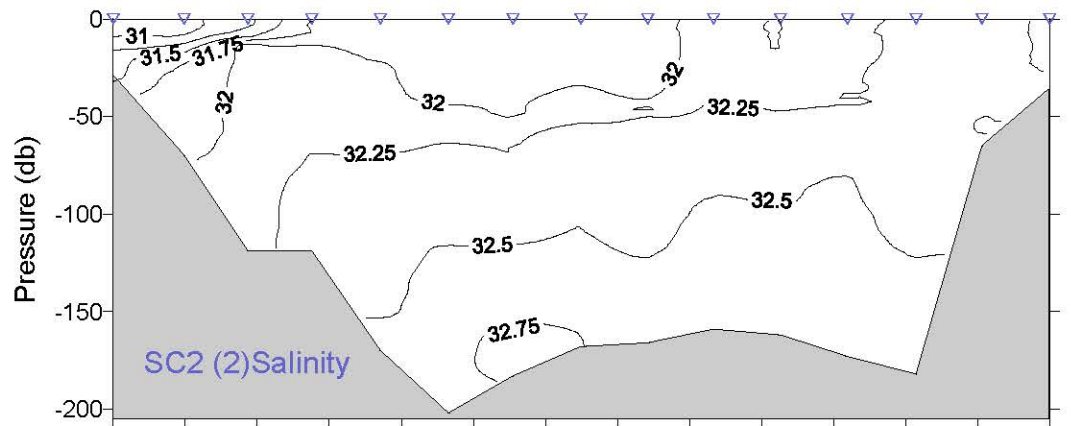
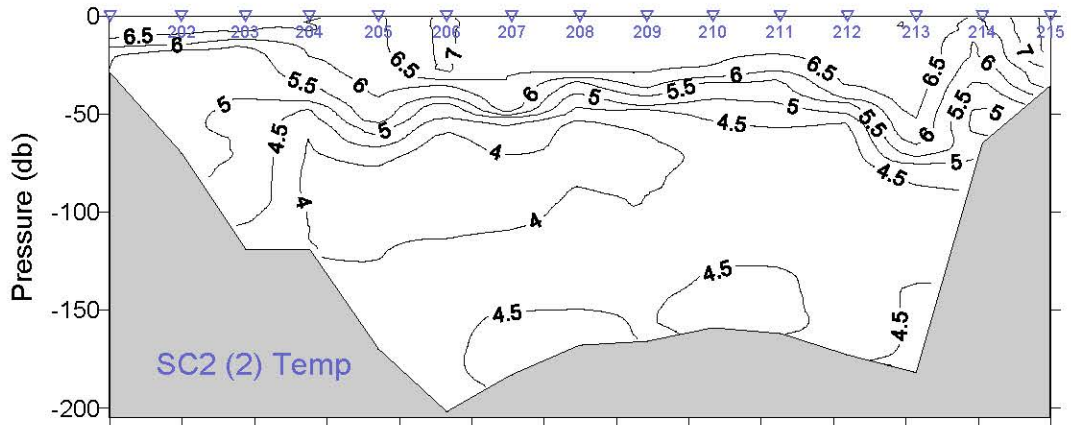
5/13/05 15:09 GMT

5/13/05 00:13 GMT



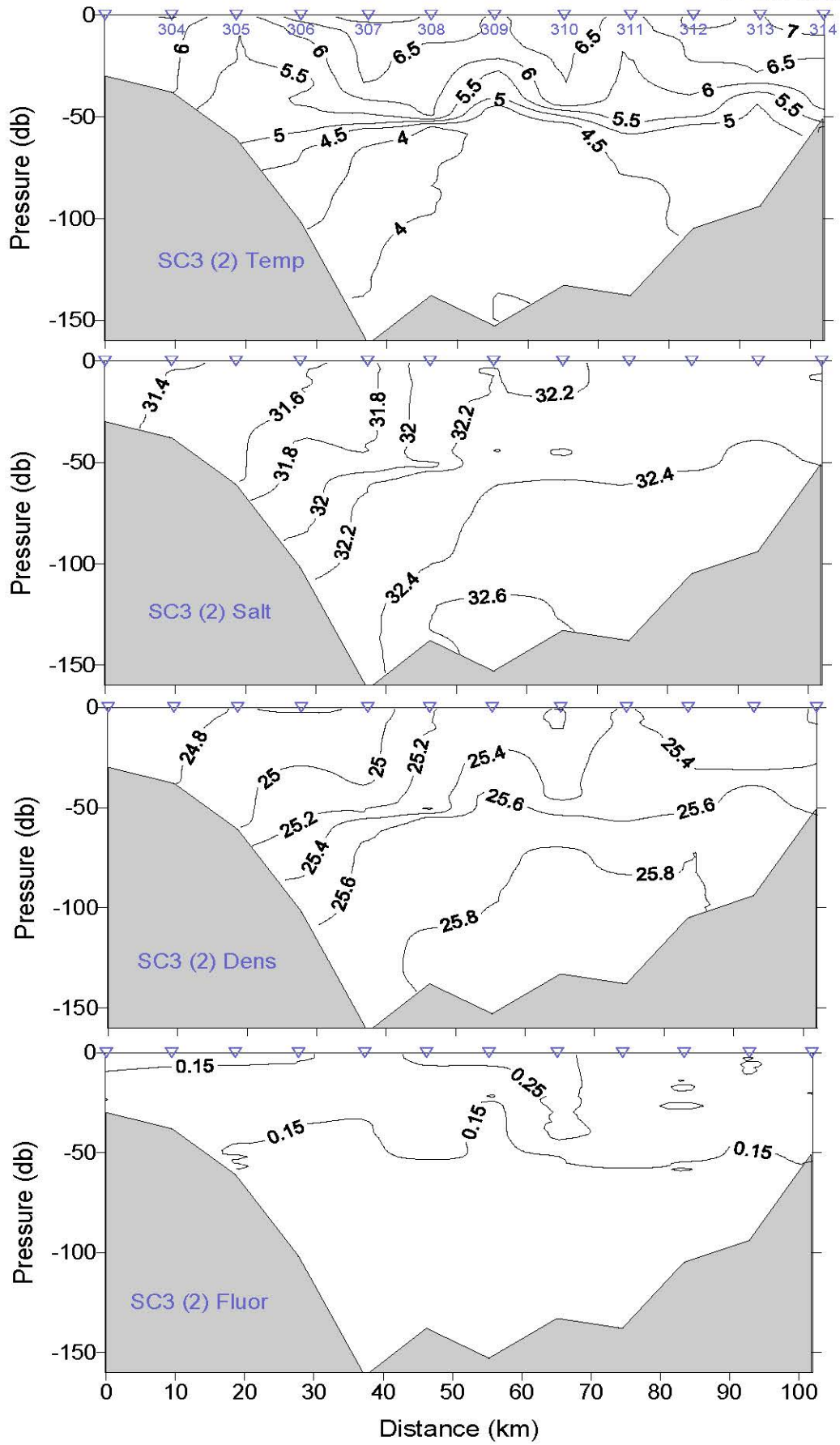
5/12/05 10:31 GMT

5/12/05 22:13 GMT



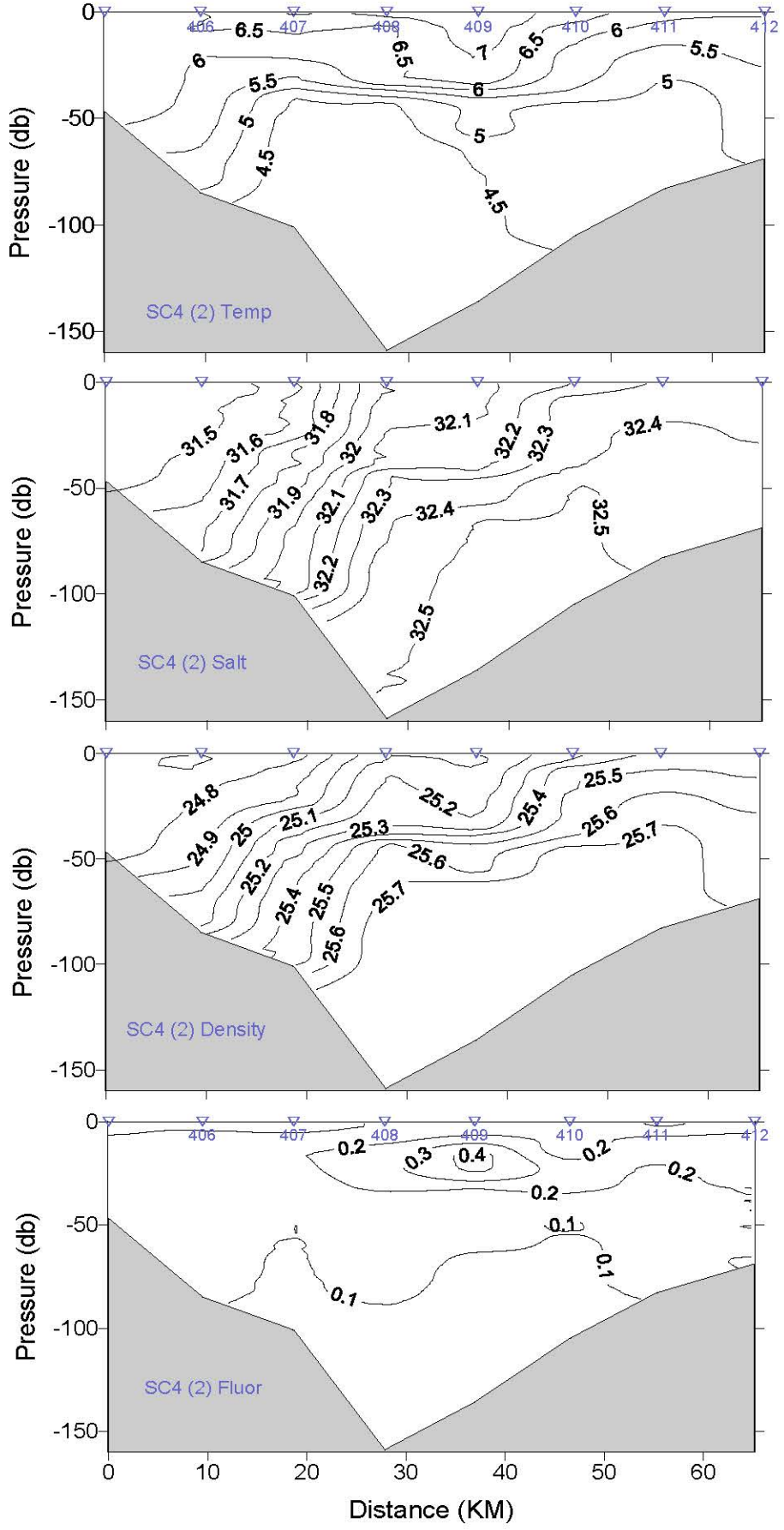
5/10/05 19:21 GMT

5/11/05 05:00 GMT



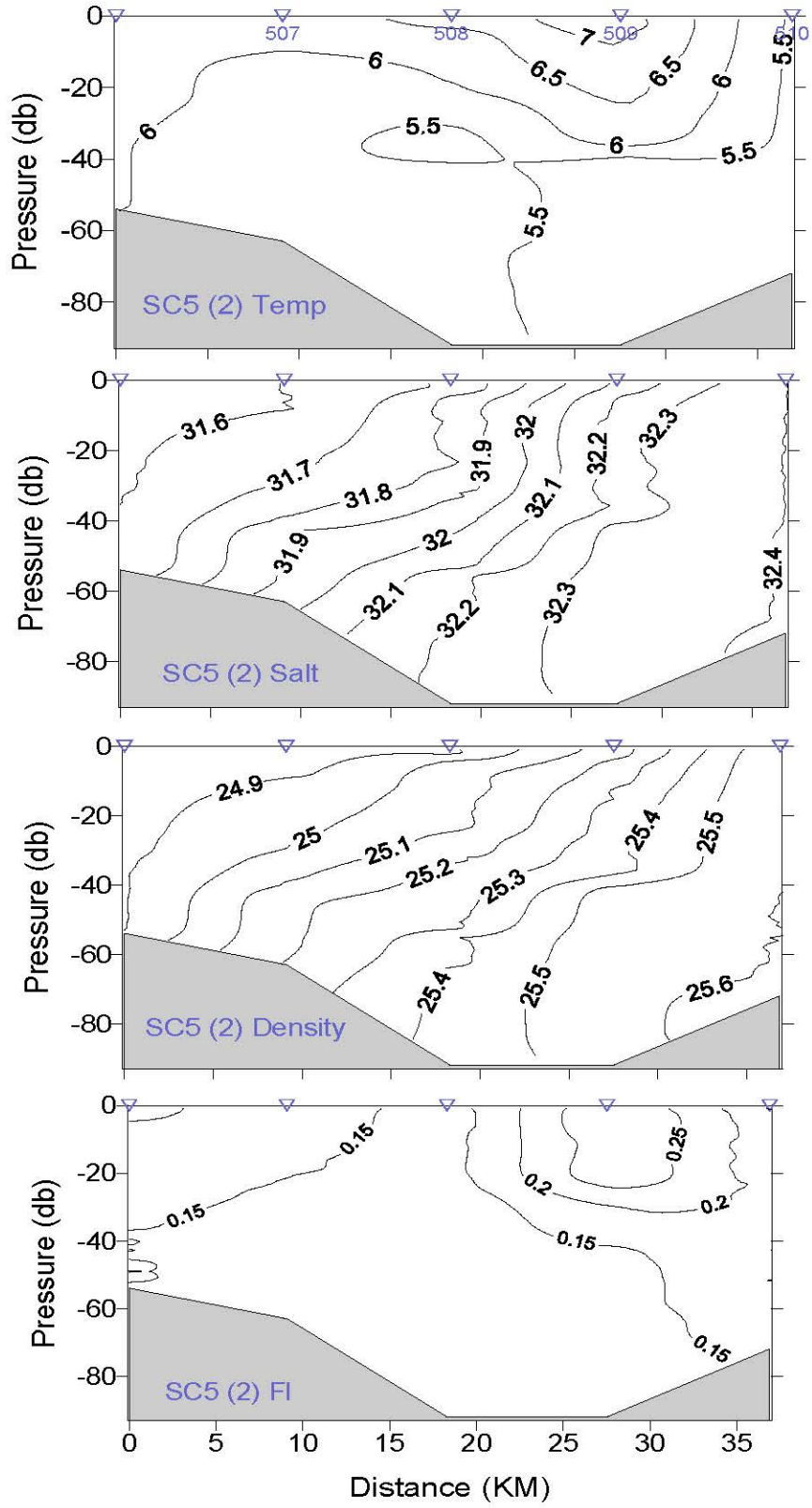
5/11/05 17:46 GMT

5/11/05 12:05 GMT

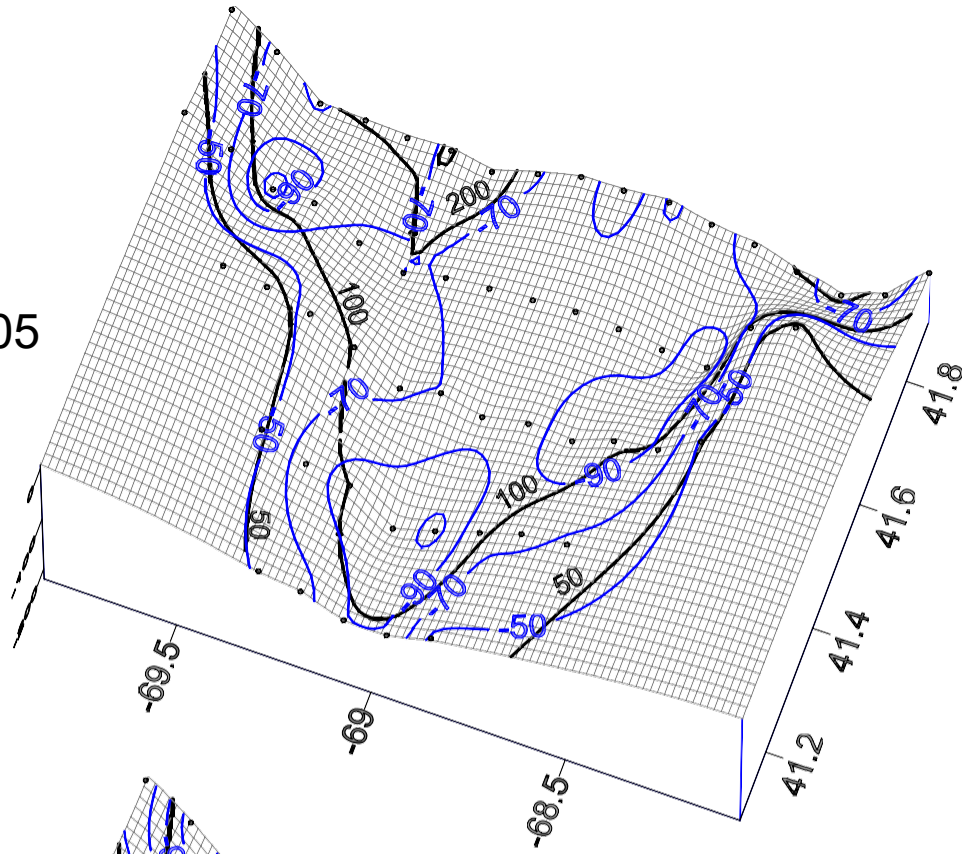


5/11/05 21:19 GMT

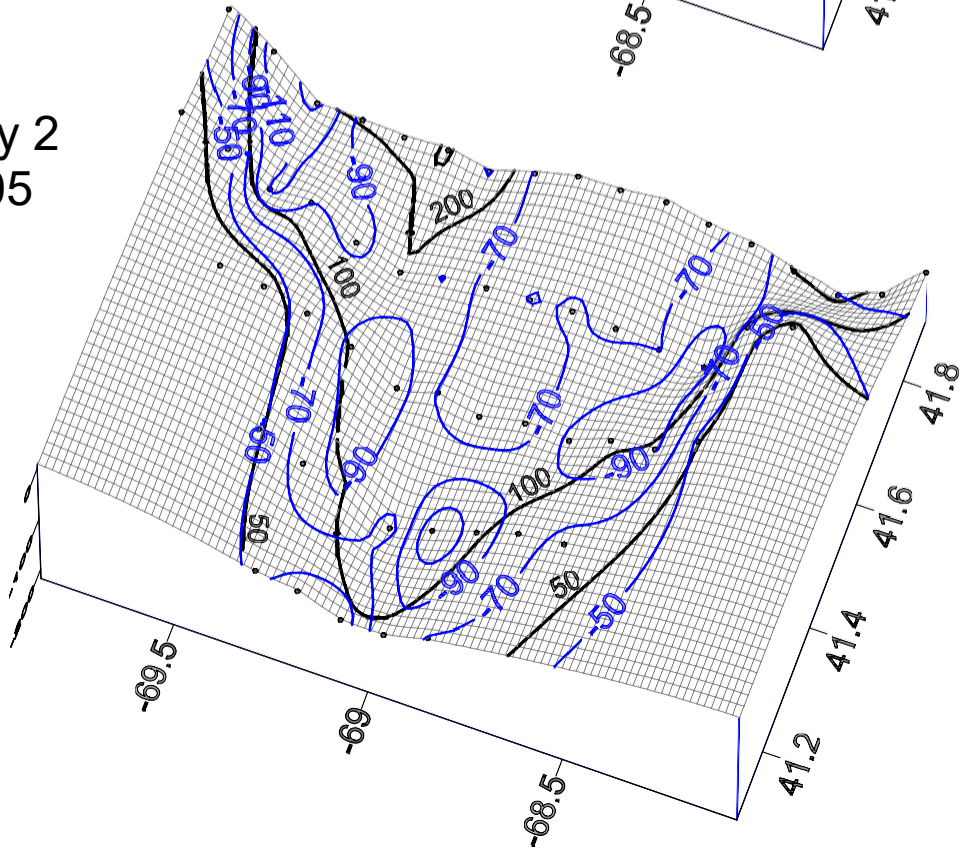
5/12/05 01:41 GMT



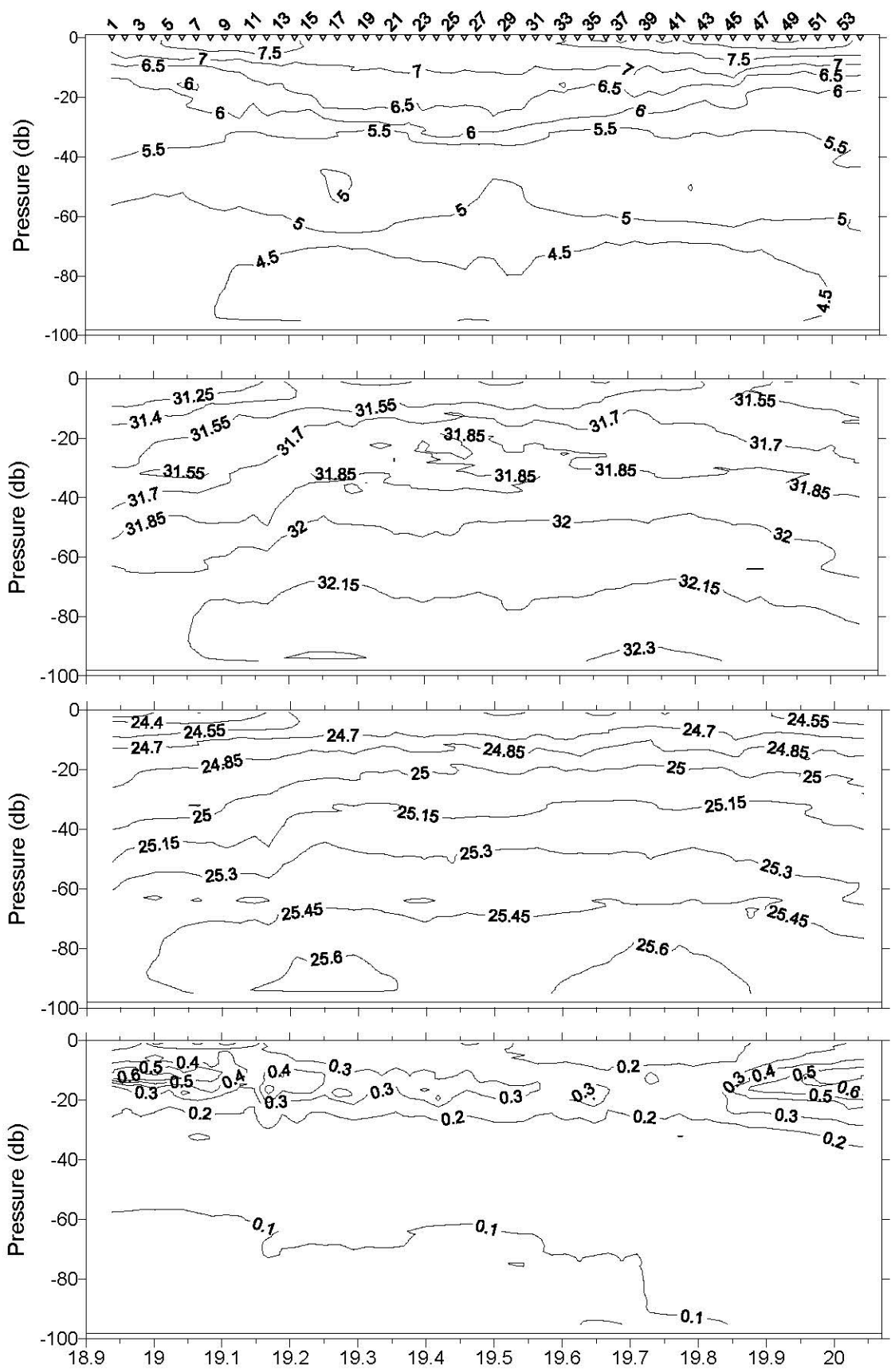
ALB0504 Survey 1
29 April - 3 May 2005



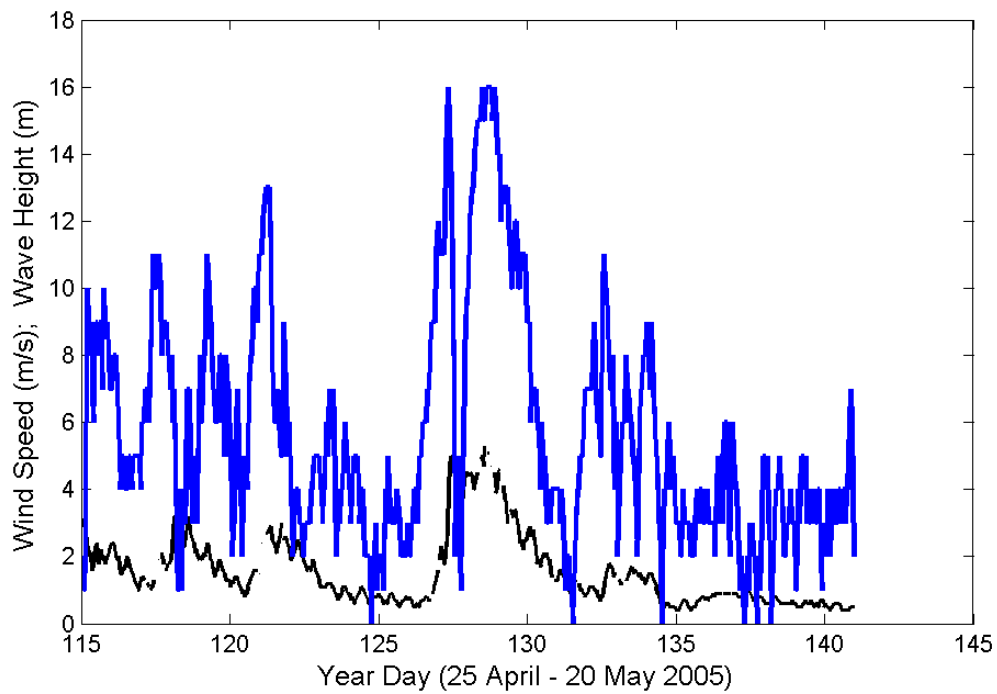
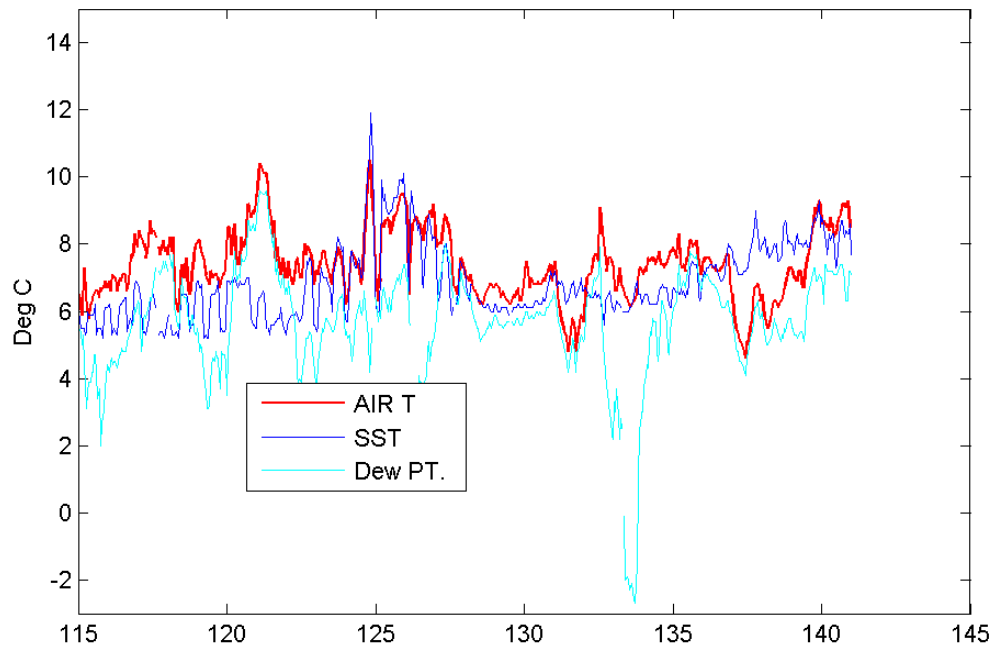
ALB0504 Survey 2
10 - 13 May 2005



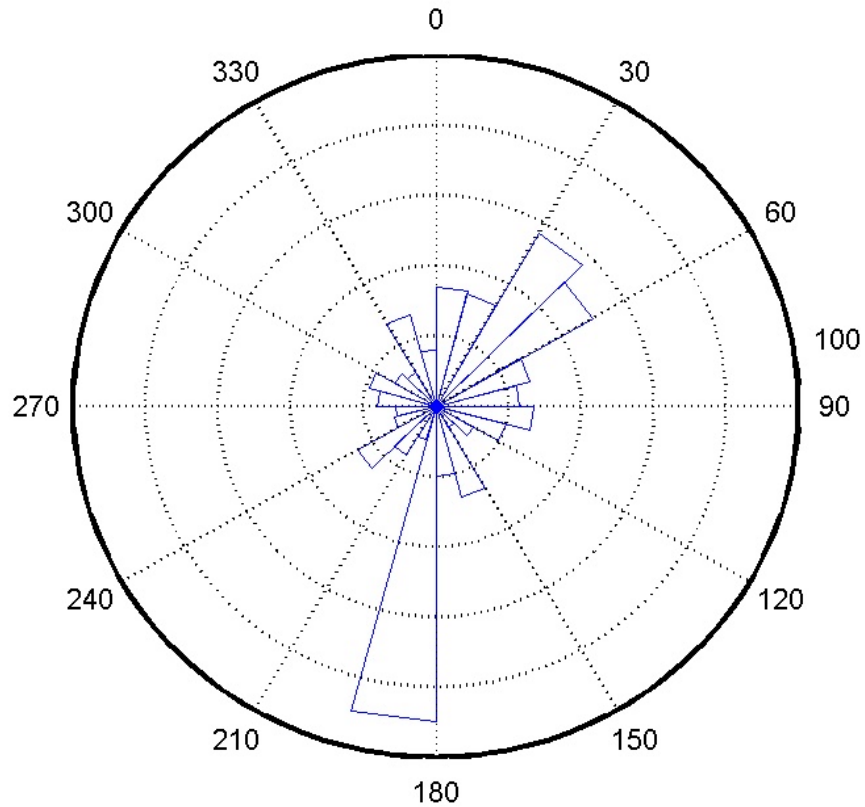
Depth of water column temperature minimum contoured and overlayed (blue) on survey bathymetry. The 50, 100, and 200m depth levels are shown in black.



May 2005

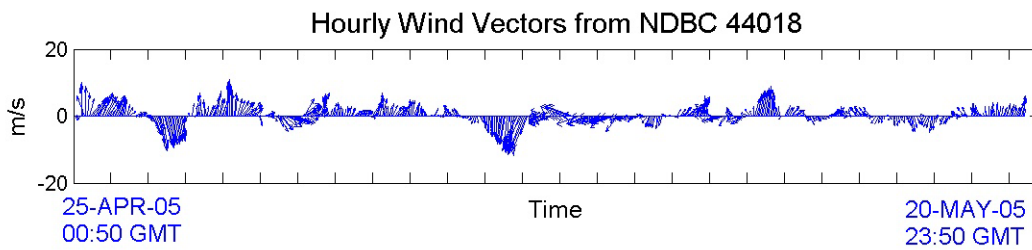


Sensor data from NDBC buoy 44018 plotted for ALB0504 cruise period. Top: air temperature, sea surface temperature and dew point temperature, Bottom: Wind speed (blue) and wave height (black)



Wind Direction 25 April - 20 May 2005

Wind histogram for ALB0504 cruise period. Data are from NDBC 44018 and have been divided into 15 degree bins (occurrence “ring” levels are 20,40,60,80 and 100)



ALB0504 Right Whale Study

28 April - 20 May, 2005

Cast #	Sta #	Lat	Long	Day	Mo	Yr	Time (GMT)	Btm Depth	Sfc Temp	Sfc Salt	Btm Temp	Btm Salt	Meters from Bottom
1	999	4141.1	6930.2	28	4	2005	23:19	119	6.68	31.39	4.36	32.60	4
2	101	4153.2	6950.5	29	4	2005	13:48	66	6.72	30.57	4.35	32.07	8
3	102	4153.5	6943.8	29	4	2005	14:37	126	6.78	30.47	4.23	32.50	4
4	103	4153.4	6937.1	29	4	2005	15:36	199	6.91	30.51	5.02	33.05	2
5	104	4153.6	6930.2	29	4	2005	16:34	202	6.99	31.21	5.31	33.32	6
6	105	4153.4	6923.6	29	4	2005	17:31	204	6.96	31.72	5.32	33.23	3
7	106	4153.4	6916.8	29	4	2005	18:31	198	7.41	31.21	5.31	33.23	5
8	107	4153.4	6910.5	29	4	2005	19:28	214	7.18	31.55	5.36	33.23	4
9	108	4153.4	6903.4	29	4	2005	20:32	186	7.26	31.72	5.28	33.14	2
10	109	4153.6	6856.8	29	4	2005	21:38	166	6.91	32.15	5.22	33.09	4
11	110	4153.5	6850.2	29	4	2005	22:40	163	6.60	32.27	4.71	32.73	3
12	111	4153.4	6843.1	29	4	2005	23:38	152	6.59	32.23	4.74	32.75	3
13	112	4153.5	6836.6	30	4	2005	0:36	170	6.33	32.23	5.70	33.25	3
14	113	4153.4	6829.9	30	4	2005	1:30	177	6.56	32.22	6.45	33.62	6
15	114	4153.3	6823.2	30	4	2005	2:28	202	6.51	32.23	7.45	34.17	5
16	115	4153.3	6816.4	30	4	2005	3:25	220	6.51	32.22	7.72	34.35	5
17	116	4153.4	6809.7	30	4	2005	4:22	190	6.60	32.24	6.29	33.55	5
18	117	4153.4	6803.1	30	4	2005	5:15	114	6.51	32.25	5.04	32.54	3
19	215	4141.5	6816.6	30	4	2005	7:19	38	6.87	32.31	6.88	32.31	6
20	214	4141.4	6823.4	30	4	2005	8:10	65	6.47	32.31	5.35	32.43	3
21	213	4141.4	6830	30	4	2005	9:08	182	6.52	32.28	6.17	33.47	6
22	212	4141.3	6836.9	30	4	2005	10:04	172	6.53	32.29	5.57	33.15	4
23	211	4141.3	6843.6	30	4	2005	10:56	160	6.49	32.29	4.89	32.81	5
24	210	4141.4	6850.3	30	4	2005	11:49	157	6.69	32.25	4.74	32.72	4
25	209	4141.4	6856.9	30	4	2005	12:40	164	7.34	31.80	4.70	32.74	5
26	208	4141.4	6903.6	30	4	2005	13:31	170	7.41	31.69	4.83	32.84	4
27	207	4141.5	6910.4	30	4	2005	14:25	181	7.42	31.46	4.95	32.90	4
28	206	4141.4	6916.9	30	4	2005	15:16	199	7.19	31.44	4.99	32.93	5
29	205	4141.4	6923.7	30	4	2005	16:10	170	7.33	31.01	4.48	32.67	4
30	204	4141.4	6930.6	30	4	2005	17:07	119	7.30	31.04	4.20	32.50	3
31	203	4141.4	6937	30	4	2005	17:49	125	7.20	30.67	4.18	32.29	3
32	202	4141.4	6943.4	30	4	2005	18:34	71	7.15	30.57	4.34	32.10	3

Cast #	Sta #	Lat	Long	Day	Mo	Yr	Time (GMT)	Btm Depth	Sfc Temp	Sfc Salt	Btm Temp	Btm Salt	Meters from Bottom
33	201	4141.4	6950.5	30	4	2005	19:17	31	6.94	30.63	4.95	31.54	4
34	303	4129.4	6937.2	2	5	2005	13:28	30	6.61	31.14	5.39	31.95	3
35	304	4129.3	6930.4	2	5	2005	14:16	39	7.33	30.88	5.01	32.09	8
36	305	4129.3	6923.8	2	5	2005	15:08	62	7.61	30.99	4.55	32.28	4
37	306	4129.5	6917.2	2	5	2005	15:55	103	7.14	31.20	4.10	32.39	4
38	307	4129.7	6910.3	2	5	2005	17:42	161	7.73	31.30	4.48	32.63	4
39	308	4129.6	6903.9	2	5	2005	18:37	137	7.84	31.56	4.56	32.68	5
40	309	4129.4	6857.4	2	5	2005	19:37	153	7.56	31.77	4.50	32.59	3
41	310	4129.4	6850.3	2	5	2005	22:53	133	6.75	32.20	4.58	32.62	2
42	311	4129.3	6843.5	2	5	2005	23:49	138	7.55	32.24	4.52	32.58	4
43	312	4129.3	6837.1	3	5	2005	0:41	106	7.45	32.27	4.89	32.47	5
44	313	4129.3	6830.3	3	5	2005	1:31	95	6.81	32.29	5.62	32.38	6
45	314	4129.4	6823.8	3	5	2005	2:17	51	6.25	32.31	5.88	32.33	4
46	510	4105.6	6850.8	3	5	2005	5:46	73	5.60	32.37	5.60	32.37	4
47	509	4105.4	6857.5	3	5	2005	6:31	93	5.58	32.39	5.57	32.39	5
48	508	4105.4	6904.1	3	5	2005	7:19	93	6.76	32.28	4.90	32.45	4
49	507	4105.4	6910.7	3	5	2005	8:07	64	5.24	32.39	5.22	32.40	4
50	506	4105.5	6917.2	3	5	2005	9:01	56	5.54	32.34	5.45	32.36	4
51	405	4117.3	6923.9	3	5	2005	11:23	47	5.55	32.08	5.35	32.13	4
52	406	4117.2	6917.1	3	5	2005	12:16	84	6.76	32.03	4.67	32.39	1
53	407	4117.4	6910.5	3	5	2005	13:04	100	6.92	32.10	4.37	32.45	2
54	408	4117.4	6903.9	3	5	2005	13:51	158	7.15	32.10	4.41	32.52	3
55	409	4117.5	6857.4	3	5	2005	14:41	135	7.25	32.12	4.43	32.52	3
56	410	4117.4	6850.5	3	5	2005	15:31	105	7.31	32.20	4.50	32.51	4
57	411	4117.6	6844.2	3	5	2005	16:22	83	6.17	32.36	4.98	32.46	3
58	412	4117.4	6837.1	3	5	2005	17:13	68	7.42	32.25	5.64	32.35	2
201	N01	4117.8	6914.1	4	5	2005	0:24	97	7.26	32.22	4.65	32.42	7
59	T11	4114.8	6918.9	4	5	2005	15:52	62	7.87	31.28	4.85	32.34	4
60	T12	4114.1	6917.3	4	5	2005	16:19	64	8.32	31.33	4.82	32.37	3
61	T13	4113.6	6916.2	4	5	2005	16:37	65	8.04	31.20	4.81	32.38	3
62	T14	4113.4	6915.4	4	5	2005	16:55	69	8.67	31.24	4.71	32.39	1
63	T15	4113.3	6914.8	4	5	2005	17:19	72	7.87	31.60	4.63	32.40	2
64	T16	4112.5	6913.5	4	5	2005	17:46	76	7.66	31.63	4.59	32.41	3
65	T17	4111.3	6911.1	4	5	2005	18:15	87	9.31	31.45	4.56	32.42	3
66	T18	4111.5	6910.9	4	5	2005	18:34	88	8.81	31.65	4.51	32.42	3
202	N02	4117.1	6911.2	4	5	2005	22:15	98	10.93	31.49	4.37	32.42	4

Cast #	Sta #	Lat	Long	Day	Mo	Yr	Time (GMT)	Btm Depth	Sfc Temp	Sfc Salt	Btm Temp	Btm Salt	Meters from Bottom
67	999	4116.7	6923.5	5	5	2005	15:16	47	9.33	30.95	5.97	32.07	4
68	T21	4114.3	6924.6	5	5	2005	16:31	46	7.92	31.45	6.08	32.05	3
69	T22	4114.1	6924.7	5	5	2005	16:43	46	8.24	31.26	6.08	32.05	3
70	T23	4113.8	6925.5	5	5	2005	16:58	42	8.39	31.32	6.19	32.02	4
203	N03	4121.1	6903.5	5	5	2005	21:58	158	9.40	32.12	4.42	32.54	8
71	T31	4128.8	6901.2	6	5	2005	13:10	152	8.60	32.07	4.37	32.56	4
72	T32	4129.8	6900.3	6	5	2005	13:37	151	8.44	32.08	4.39	32.55	3
73	303	4129.1	6937.1	10	5	2005	19:21	31	6.29	31.27	6.22	31.27	3
74	304	4129.3	6930.4	10	5	2005	20:12	39	6.60	31.31	6.07	31.46	2
75	305	4129.3	6923.6	10	5	2005	21:01	62	5.68	31.46	5.25	31.56	4
76	306	4129.4	6917.1	10	5	2005	21:40	102	6.89	31.49	4.09	32.02	4
77	307	4129.3	6910.5	10	5	2005	22:32	162	7.23	31.73	4.02	32.36	3
78	308	4129.5	6903.8	10	5	2005	23:28	138	6.95	32.12	4.38	32.60	5
79	309	4129.4	6857.1	11	5	2005	0:19	153	6.42	32.19	4.52	32.66	4
80	310	4129.4	6850.4	11	5	2005	1:08	131	6.94	32.11	4.38	32.59	5
81	311	4129.7	6843.8	11	5	2005	2:25	140	6.28	32.32	4.47	32.56	4
82	312	4129.5	6837	11	5	2005	3:19	108	7.11	32.25	4.52	32.54	4
83	313	4129.5	6830.3	11	5	2005	4:07	98	6.95	32.26	4.64	32.53	4
84	314	4129.6	6823.6	11	5	2005	5:00	48	7.48	32.21	6.24	32.31	4
85	412	4117.4	6837.3	11	5	2005	12:04	69	6.01	32.33	5.11	32.44	3
86	411	4117.5	6843.8	11	5	2005	12:51	82	6.17	32.31	4.84	32.48	3
87	410	4117.3	6850.5	11	5	2005	13:37	106	6.73	32.20	4.56	32.50	4
88	409	4117.3	6857.2	11	5	2005	14:25	135	7.39	32.07	4.46	32.52	4
89	408	4117.3	6903.7	11	5	2005	15:13	158	7.09	32.03	4.31	32.50	3
90	407	4117.5	6910.5	11	5	2005	16:04	101	7.09	31.58	4.17	32.03	3
91	406	4117.5	6917.3	11	5	2005	16:57	84	6.42	31.41	5.27	31.68	4
92	405	4117.5	6923.8	11	5	2005	17:46	48	6.44	31.44	6.34	31.43	3
93	506	4105.2	6917.3	11	5	2005	21:19	58	6.24	31.51	6.03	31.60	5
94	507	4105.2	6910.6	11	5	2005	22:15	62	6.21	31.60	5.67	31.91	5
95	508	4105.5	6903.9	12	5	2005	0:10	94	6.83	31.73	5.64	32.23	5
96	509	4105.6	6857.4	12	5	2005	0:55	90	7.17	32.12	5.26	32.35	4
97	510	4105.5	6850.8	12	5	2005	1:40	72	5.40	32.40	5.37	32.40	4
98	201	4141.4	6950.1	12	5	2005	10:31	33	6.60	30.99	5.50	31.44	3
99	202	4141.3	6943.6	12	5	2005	11:11	68	6.77	30.91	5.11	31.92	3
100	203	4141.4	6936.9	12	5	2005	11:55	119	6.57	31.14	4.22	32.08	4
101	204	4141.4	6930.3	12	5	2005	12:43	118	6.54	31.74	4.00	32.42	3

Cast #	Sta #	Lat	Long	Day	Mo	Yr	Time (GMT)	Btm Depth	Sfc Temp	Sfc Salt	Btm Temp	Btm Salt	Meters from Bottom
102	205	4141.4	6923.7	12	5	2005	13:26	168	6.39	31.90	4.29	32.59	4
103	206	4141.4	6916.9	12	5	2005	14:16	200	7.09	31.84	4.37	32.61	4
104	207	4141.4	6910.4	12	5	2005	15:15	181	6.61	31.82	4.87	32.91	3
105	208	4141.5	6903.5	12	5	2005	16:08	171	6.98	31.84	4.63	32.75	3
106	209	4141.5	6856.9	12	5	2005	17:00	167	6.65	31.91	4.48	32.65	4
107	210	4141.4	6850	12	5	2005	17:57	159	6.64	32.07	4.59	32.70	3
108	211	4141.4	6843.4	12	5	2005	18:53	161	6.87	31.99	4.60	32.69	4
109	212	4141.4	6836.8	12	5	2005	19:46	171	6.89	32.20	4.39	32.57	4
110	213	4141.5	6830.1	12	5	2005	20:40	180	6.99	32.27	4.52	32.59	4
111	214	4141.4	6823.4	12	5	2005	21:32	63	6.44	32.32	4.80	32.51	5
112	215	4141.4	6816.9	12	5	2005	22:13	38	7.58	32.23	6.78	32.30	4
113	117	4153.4	6803.1	13	5	2005	0:13	113	7.06	32.27	4.64	32.66	4
114	116	4153.4	6809.6	13	5	2005	1:00	190	6.95	32.28	5.87	33.24	5
115	115	4153.4	6816.4	13	5	2005	1:49	222	6.66	32.23	7.72	34.51	7
116	114	4153.5	6823.1	13	5	2005	2:43	206	6.96	32.13	6.65	33.82	3
117	113	4153.5	6830.1	13	5	2005	3:40	175	7.18	32.10	5.86	33.31	3
118	112	4153.5	6836.6	13	5	2005	4:31	170	7.43	32.04	5.56	33.16	3
119	111	4153.4	6843.2	13	5	2005	5:22	154	7.25	31.99	5.37	33.06	4
120	110	4153.2	6850.1	13	5	2005	6:13	163	6.71	31.96	5.16	33.09	3
121	109	4153.1	6856.8	13	5	2005	7:09	167	6.81	31.92	4.75	32.82	4
122	108	4153.4	6903.3	13	5	2005	8:01	186	6.96	31.90	4.99	33.00	5
123	107	4153.4	6909.9	13	5	2005	9:07	214	6.91	31.98	4.90	32.93	4
124	106	4153.4	6916.7	13	5	2005	10:10	198	6.39	32.01	5.56	33.41	2
125	105	4153.4	6923.4	13	5	2005	11:10	203	6.55	32.00	5.56	33.38	4
126	104	4153.4	6930.1	13	5	2005	12:10	201	6.56	32.05	5.20	33.07	3
127	103	4153.5	6937.1	13	5	2005	13:19	198	6.44	32.08	4.97	33.00	3
128	102	4153.4	6943.7	13	5	2005	14:22	126	6.39	31.67	4.09	32.20	2
129	101	4153.5	6950.4	13	5	2005	15:08	66	6.87	30.64	4.94	31.90	2
204	N04	4109.4	6900.1	13	5	2005	23:16	99	7.06	30.11	4.42	32.05	3
130	T41	4110.4	6856.6	14	5	2005	12:13	106	6.89	31.75	4.90	32.09	4
131	T51	4110.2	6855.7	14	5	2005	15:21	104	6.85	31.80	5.01	32.13	5
132	T61	4115.5	6855.1	14	5	2005	17:52	108	7.09	32.04	4.34	32.24	4
133	T62	4115.7	6855.6	14	5	2005	18:23	111	7.22	32.04	4.31	32.28	3
134	T63	4115.9	6856.2	14	5	2005	18:47	115	7.11	31.98	4.29	32.34	3
205	N05	4116.1	6857.3	14	5	2005	23:04	125	6.77	31.70	4.42	32.47	4
301	W01	4115.2	6857.3	14	5	2005	23:25	116	6.76	31.71	4.44	32.49	8

Cast #	Sta #	Lat	Long	Day	Mo	Yr	Time (GMT)	Btm Depth	Sfc Temp	Sfc Salt	Btm Temp	Btm Salt	Meters from Bottom
302	W01	4115.2	6856.8	14	5	2005	23:38	113	6.73	31.70	6.88	31.79	103
135	M01	4117.4	6857.1	15	5	2005	17:06	134	7.30	31.74	4.24	32.47	3
136	M01	4117.5	6856.7	15	5	2005	18:19	134	7.35	31.79	4.37	32.48	4
303	W02	4117.5	6856.6	15	5	2005	18:40	132	7.65	31.78	4.43	32.47	7
304	W02	4117.4	6856.6	15	5	2005	18:53	133	7.67	31.79	6.74	32.04	112
137	M02	4153.4	6916.9	16	5	2005	11:19	198	7.28	32.00	5.90	33.61	4
138	M02	4153.7	6917.1	16	5	2005	13:04	198	7.33	32.04	5.91	33.61	3
305	W03	4153.6	6917.1	16	5	2005	13:25	197	7.31	32.03	4.97	32.87	56
306	W03	4153.6	6917.2	16	5	2005	13:37	198	7.27	32.03	6.46	32.08	168
139	M03	4153.4	6816.3	16	5	2005	19:01	221	7.57	31.93	8.04	34.78	2
307	W04	4153.1	6815.8	16	5	2005	20:28	220	7.79	32.04	4.47	32.59	92
140	M03	4153.1	6815.8	16	5	2005	20:53	218	7.76	32.11	8.03	34.77	4
141	999	4118.1	6916.3	17	5	2005	17:49	89	7.27	31.19	4.70	32.09	4
142	T71	4108.9	6914.4	18	5	2005	18:58	56	6.69	31.45	5.25	31.88	3
143	T72	4109.3	6914.6	18	5	2005	19:13	56	6.84	31.39	5.33	31.86	5
144	T73	4110.1	6914.4	18	5	2005	19:31	59	7.10	31.35	5.32	31.86	3
145	T74	4110.6	6914.3	18	5	2005	19:46	60	7.27	31.32	5.29	31.86	2
146	T75	4111.2	6914.1	18	5	2005	20:02	64	7.37	31.33	5.28	31.86	3
147	D01	4117.5	6912.2	18	5	2005	22:31	98	7.40	31.20	4.76	32.06	3
148	D02	4117.4	6912.3	18	5	2005	23:00	98	7.44	31.22	4.78	32.06	4
149	D03	4117.5	6912.2	18	5	2005	23:30	98	7.38	31.24	4.79	32.06	3
150	D04	4117.5	6912.2	19	5	2005	0:00	98	7.30	31.17	4.79	32.07	4
151	D05	4117.5	6912.2	19	5	2005	0:30	99	7.65	31.13	4.71	32.10	4
152	D06	4117.5	6912.2	19	5	2005	1:01	98	7.72	31.13	4.77	32.07	9
153	D07	4117.5	6912.3	19	5	2005	1:30	98	7.99	31.10	4.68	32.11	3
154	D08	4117.5	6912.2	19	5	2005	2:01	97	7.97	31.11	4.64	32.12	3
155	D09	4117.5	6912.2	19	5	2005	2:31	98	7.74	31.11	4.39	32.21	4
156	D10	4117.5	6912.2	19	5	2005	3:00	98	7.86	31.10	4.28	32.25	4
157	D11	4117.5	6912.2	19	5	2005	3:30	97	7.85	31.20	4.27	32.26	5
158	D12	4117.4	6912.2	19	5	2005	4:00	97	7.73	31.26	4.22	32.28	4
159	D13	4117.5	6912.2	19	5	2005	4:31	98	7.55	31.38	4.18	32.30	4
160	D14	4117.5	6912.3	19	5	2005	5:00	97	7.55	31.44	4.15	32.31	3
161	D15	4117.4	6912.1	19	5	2005	5:30	97	7.41	31.50	4.15	32.32	3
162	D16	4117.6	6912.2	19	5	2005	6:00	98	7.40	31.53	4.10	32.34	4
163	D17	4117.4	6911.9	19	5	2005	6:30	97	7.40	31.54	4.13	32.34	4
164	D18	4117.5	6912.2	19	5	2005	7:00	98	7.37	31.55	4.12	32.34	4

Cast #	Sta #	Lat	Long	Day	Mo	Yr	Time (GMT)	Btm Depth	Sfc Temp	Sfc Salt	Btm Temp	Btm Salt	Meters from Bottom
165	D19	4117.5	6912.2	19	5	2005	7:30	98	7.37	31.55	4.18	32.30	4
166	D20	4117.6	6912.2	19	5	2005	8:00	98	7.37	31.56	4.21	32.29	4
167	D21	4117.5	6912.3	19	5	2005	8:30	98	7.36	31.55	4.28	32.24	4
168	D22	4117.5	6912.2	19	5	2005	9:00	98	7.36	31.55	4.32	32.22	3
169	D23	4117.5	6912.2	19	5	2005	9:30	98	7.45	31.52	4.39	32.20	3
170	D24	4117.5	6912.2	19	5	2005	10:00	98	7.45	31.49	4.44	32.19	3
171	D25	4117.5	6912.2	19	5	2005	10:30	98	7.46	31.43	4.49	32.17	3
172	D26	4117.6	6912.2	19	5	2005	11:00	99	7.48	31.43	4.51	32.17	4
173	D27	4117.5	6912.2	19	5	2005	11:30	98	7.43	31.40	4.54	32.15	4
174	D28	4117.5	6912.3	19	5	2005	12:00	98	7.39	31.35	4.50	32.17	3
175	D29	4117.5	6912.2	19	5	2005	12:30	98	7.42	31.38	4.43	32.20	4
176	D30	4117.4	6912.2	19	5	2005	13:03	98	7.44	31.39	4.39	32.22	3
177	D31	4117.5	6912.2	19	5	2005	13:30	98	7.48	31.44	4.36	32.23	3
178	D32	4117.5	6912.2	19	5	2005	14:00	98	7.45	31.50	4.33	32.24	4
179	D33	4117.5	6912.2	19	5	2005	14:30	98	7.46	31.52	4.23	32.27	3
180	D34	4117.5	6912.2	19	5	2005	15:00	98	7.69	31.50	4.19	32.29	4
181	D35	4117.5	6912.2	19	5	2005	15:30	98	7.99	31.39	4.17	32.30	3
182	D36	4117.5	6912.2	19	5	2005	16:00	97	8.08	31.34	4.15	32.30	3
183	D37	4117.7	6912.1	19	5	2005	16:30	98	7.30	31.52	4.11	32.32	4
184	D38	4117.5	6912.2	19	5	2005	17:00	97	7.81	31.48	4.11	32.31	3
185	D39	4117.6	6912.1	19	5	2005	17:30	98	7.54	31.51	4.09	32.31	3
186	D40	4117.6	6912.2	19	5	2005	18:00	97	8.36	31.52	4.09	32.31	3
187	D41	4117.6	6912.1	19	5	2005	18:30	98	7.85	31.54	4.07	32.32	4
188	D42	4117.6	6912.1	19	5	2005	19:00	98	8.16	31.53	4.09	32.32	4
189	D43	4117.4	6912.1	19	5	2005	19:30	97	8.31	31.55	4.12	32.32	3
190	D44	4117.5	6912.2	19	5	2005	20:00	98	8.06	31.58	4.16	32.30	3
191	D45	4117.5	6912.2	19	5	2005	20:30	97	8.00	31.57	4.20	32.27	2
192	D46	4117.5	6912.2	19	5	2005	21:00	97	8.38	31.59	4.26	32.24	3
193	D47	4117.5	6912.3	19	5	2005	21:30	97	8.28	31.61	4.34	32.22	3
194	D48	4117.6	6912.2	19	5	2005	22:00	98	8.57	31.54	4.40	32.20	3
195	D49	4117.6	6912.2	19	5	2005	22:30	98	8.67	31.55	4.47	32.18	3
196	D50	4117.6	6912.2	19	5	2005	23:00	98	8.38	31.54	4.49	32.18	4
197	D51	4117.5	6912.2	19	5	2005	23:30	98	8.51	31.48	4.53	32.17	3
198	D52	4117.5	6912.2	20	5	2005	0:00	98	8.33	31.48	4.56	32.15	3
199	D53	4117.5	6912.2	20	5	2005	0:30	98	7.87	31.40	4.54	32.16	3
200	D54	4117.5	6912.1	20	5	2005	1:00	98	7.88	31.37	4.53	32.17	4