



## Earth's Future

### COMMENTARY

10.1029/2018EF001012

#### Key Points:

- Emissions of fossil fuels to the atmosphere appear to have leveled off at 36 billion tons of CO<sub>2</sub> per year
- The atmospheric growth rate of CO<sub>2</sub> has reached record levels of ~3 ppm/year
- In order to ultimately stabilize the concentration of atmospheric CO<sub>2</sub>, it is first necessary to stabilize the atmospheric CO<sub>2</sub> growth rate

#### Correspondence to:

A. P. Ballantyne,  
apballantyne@gmail.com

#### Citation:

Ballantyne, A. P., Ciais, P., & Miller, J. B. (2018). Cautious optimism and incremental goals toward stabilizing atmospheric CO<sub>2</sub>. *Earth's Future*, 6, 1632–1637. <https://doi.org/10.1029/2018EF001012>

Received 9 AUG 2018

Accepted 19 OCT 2018

Accepted article online 23 OCT 2018

Published online 20 DEC 2018

©2018. The Authors.

This is an open access article under the terms of the Creative Commons Attribution-NonCommercial-NoDerivs License, which permits use and distribution in any medium, provided the original work is properly cited, the use is non-commercial and no modifications or adaptations are made.

## Cautious Optimism and Incremental Goals Toward Stabilizing Atmospheric CO<sub>2</sub>

A. P. Ballantyne<sup>1,2</sup> , P. Ciais<sup>2</sup>, and J. B. Miller<sup>3</sup> 

<sup>1</sup>Department of Ecosystem and Conservation Sciences, University of Montana, Missoula, MT, USA, <sup>2</sup>Laboratoire des Sciences du Climat et de l'Environnement, Gif Sur Yvette, France, <sup>3</sup>National Oceanographic and Atmospheric Administration, Boulder, CO, USA

**Abstract** Fossil fuel emissions of CO<sub>2</sub> to the atmosphere appear to have leveled off in recent years; however, atmospheric CO<sub>2</sub> concentrations continue to rise. Our simple analysis shows that peaks in the growth rates of human population and fossil fuel emissions have been observed, but the growth rate of atmospheric CO<sub>2</sub> has reached record levels and shows no indication of peaking. Before atmospheric CO<sub>2</sub> concentrations can be stabilized at safe levels, a peak in the CO<sub>2</sub> growth rate must be achieved.

**Plain Language Summary** Stabilizing the concentration of CO<sub>2</sub> in Earth's atmosphere is one of the most daunting challenges to humanity. Despite recent evidence indicating that fossil fuel emissions of CO<sub>2</sub> have stabilized at approximately 35 billion tons a year, atmospheric growth rates of CO<sub>2</sub> have reached record levels of nearly 3 parts per million per year. Before we can ultimately stabilize the concentration of atmospheric CO<sub>2</sub>, we must first stabilize its growth rate.

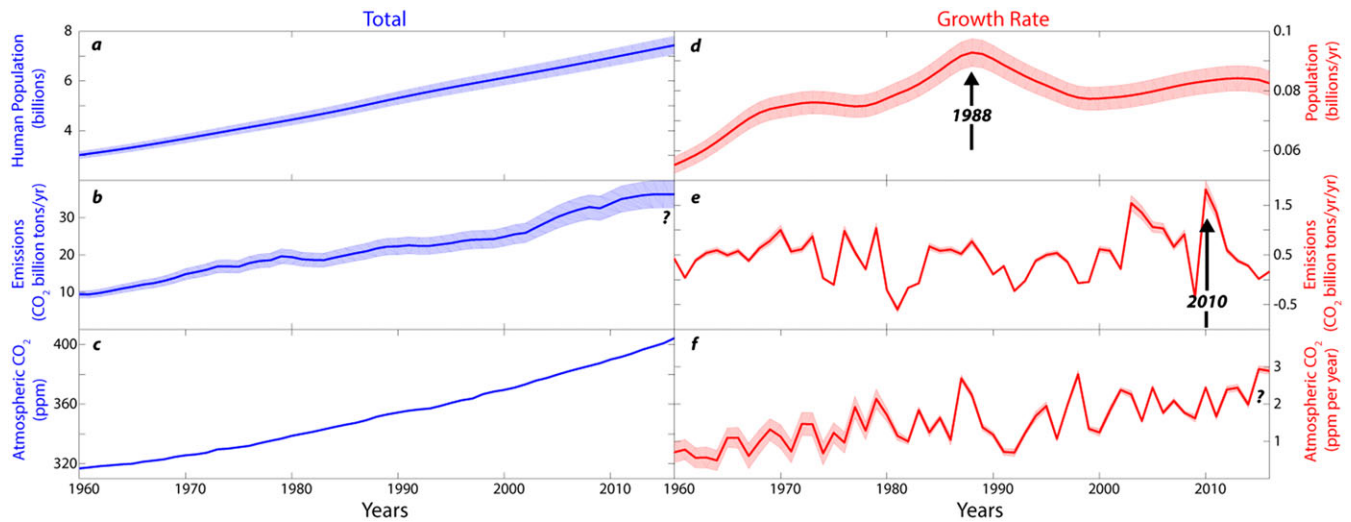
### 1. Introduction

One of the greatest challenges currently facing humanity is the stabilization of atmospheric CO<sub>2</sub>. While we currently possess the technological know-how to stabilize and reduce CO<sub>2</sub> emissions (Pacala & Socolow, 2004), it remains a daunting task, due to significant social, political, and economic challenges to deploying this technology (Davis et al., 2013). Recent evidence suggests that we are making progress toward a peak in fossil fuel (Jackson et al., 2015) and land use (Houghton & Nassikas, 2017) emissions due to “irreversible momentum towards green energy” (Obama, 2017). However, ultimately Earth's radiative budget is controlled by atmospheric concentrations of greenhouse gases that are controlled by many processes. In order to stabilize atmospheric CO<sub>2</sub> concentrations, it is clearly necessary for anthropogenic CO<sub>2</sub> emissions to be reduced to 0 (Intergovernmental Panel on Climate Change, 2014). Just because emissions go to 0, however, does not necessarily mean that CO<sub>2</sub> concentrations will stabilize because atmospheric concentrations of CO<sub>2</sub> are controlled by many processes—not just emissions. Human beings have the capacity to directly regulate anthropogenic emissions, but Earth's natural carbon reservoirs cannot be directly regulated by humans. Thus, examining how the CO<sub>2</sub> atmospheric growth rate (AGR) has responded to recent changes in human population and fossil fuel emissions is a useful diagnostic for examining the state of Earth's carbon reservoirs.

Here we provide a simple analysis of human population, fossil fuel emissions, and atmospheric CO<sub>2</sub> concentrations. To diagnose how human population and anthropogenic emissions have interacted to affect the atmospheric CO<sub>2</sub> growth rate, we examine how their total quantities and their growth rates have changed over time. Lastly, based on the premise that a *peak* in any quantity is usually preceded by a peak in its growth rate (Deffeyes, 2008; Maggio & Cacciola, 2012), we search for peaks in these quantities and growth rates at global and regional scales. Lastly, we investigate the changing sensitivity of the atmospheric CO<sub>2</sub> growth rate to anthropogenic emissions and temperature and conclude with some policy implications (see section 4).

### 2. Results: Trends and Peaks in Human Perturbation of the Global Carbon Cycle

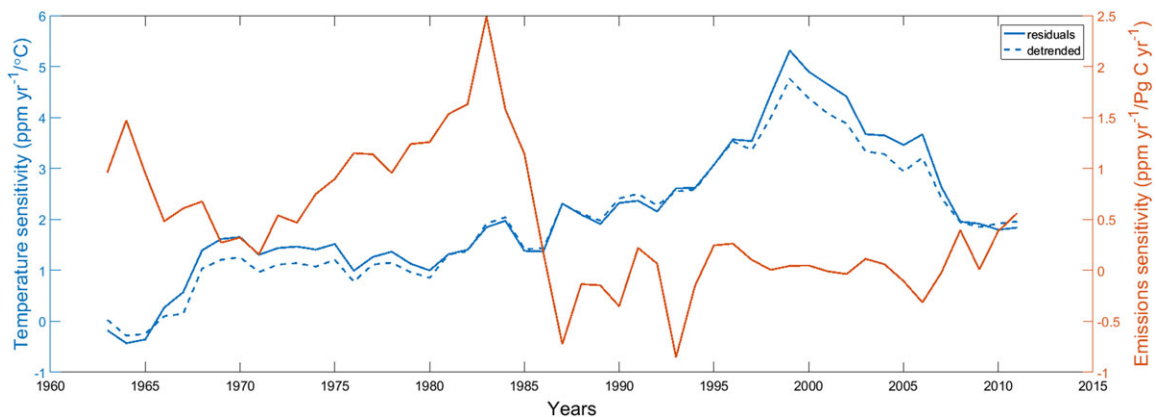
Although human population, fossil fuel emissions, and atmospheric CO<sub>2</sub> continue to increase, some of their growth rates appear to have peaked within the last five decades (Figure 1). According to the most recent census data (United Nations [UN], 2013), total human population reached approximately 7.4 billion people in 2016 (Figure 1a), but the population growth rate appears to have peaked in 1988 at 93 million people per



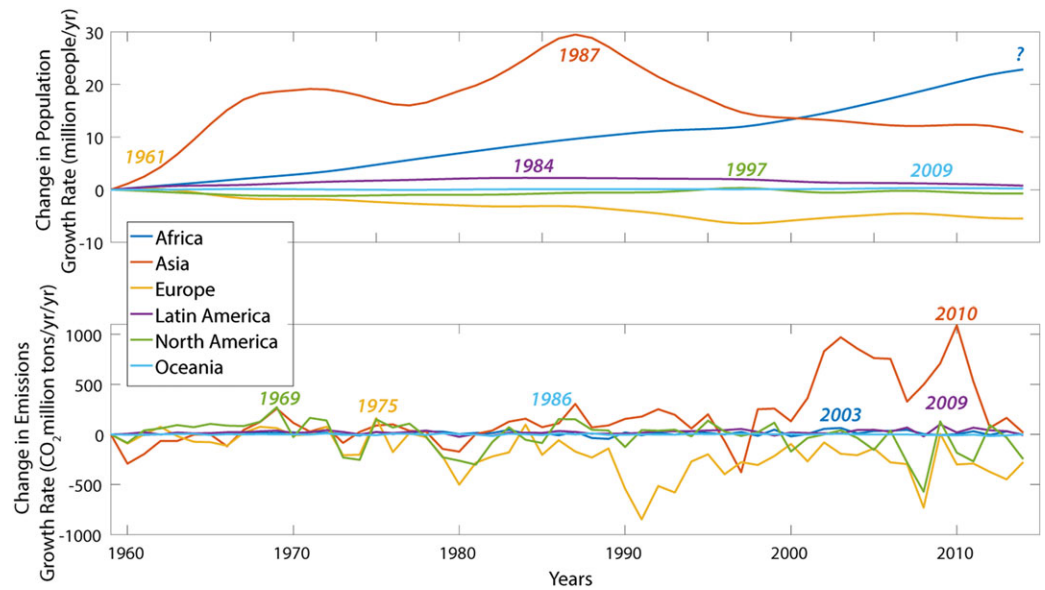
**Figure 1.** Comparison of human population, fossil fuel emissions, and atmospheric CO<sub>2</sub>. The total amounts of human population (a), fossil fuel emissions (b), and atmospheric CO<sub>2</sub> (c) on left in blue, compared with their respective growth rates in red (d–f). Black arrows indicate apparent peaks in the human population growth rate in 1988 (d) and the emissions growth rate in 2010 (e) but with no evident peak in the growth rate of atmospheric CO<sub>2</sub> (f). Error envelopes on estimates represent 1 $\sigma$  error estimates for each quantity.

year (Figure 1d). While global emissions from fossil fuels have risen to 36.3 billion tons of CO<sub>2</sub> in 2016 (Figure 1b), the growth rate of fossil fuel emissions peaked in 2010 and has approached 0 in both 2015 and 2016 (Figure 1e). In contrast, atmospheric CO<sub>2</sub> concentrations reached an average of 404 ppm in 2016 (Figure 1c), and the AGR reached record levels with nearly 3 ppm of CO<sub>2</sub> added to the atmosphere in both 2015 (2.94 ppm/year) and 2016 (2.89 ppm/year; Figure 1f). Thus, we are cautiously optimistic that the growth rate of CO<sub>2</sub> emissions has reached its peak and that total emissions appear to be leveling off; however, there is no indication that AGR has yet to reach its peak.

While the long-term trend in CO<sub>2</sub> growth rate is best predicted by total emissions over the last 50 years (Betts et al., 2016), the sensitivity of interannual variability on decadal timescales can be sensitive to emissions (Peters et al., 2011) as well as temperature (Cox et al., 2013) and precipitation fluctuations (X. Wang et al., 2014). Indeed, if we examine the sensitivity of the interannual growth rate of CO<sub>2</sub> to temperature and emissions, we see notable decadal shifts in sensitivity (Figure 2). From 1960 to about 1985 the interannual AGR



**Figure 2.** The sensitivities of the interannual growth rate of atmospheric CO<sub>2</sub> to temperature and emissions, where the interannual atmospheric growth rate of CO<sub>2</sub> has been obtained either as the residual of a linear fit (X. Wang et al., 2014; blue dashed) or as the residual from a linear regression with total emissions from fossil fuels and land use as a dependent variable (Le Quéré et al., 2015; blue solid). Total emissions have been detrended for calculating interannual CO<sub>2</sub> growth rate sensitivities (red line). Sensitivities of the interannual CO<sub>2</sub> growth rate to detrended land surface temperatures (Schmidt et al., 2009) and total emissions are calculated using a 10-year moving window, illustrating the greater sensitivity of CO<sub>2</sub> growth rate to total emissions in the first half of the record and greater sensitivity to temperature in the second half of the record.



**Figure 3.** Changes in the growth rates of human population and fossil fuel emissions by region. Apparent peaks in the regional growth rate of human population (top) and fossil fuel emissions (bottom) normalized to 1959 are indicated by colored years in italics corresponding to regions (see legend).

was most sensitive to changes in emissions (Figure 2; red) and since then the AGR appears to be much more sensitive to temperature changes (Figure 2; blue). Thus, the apparent recent decoupling between the leveling off of emissions and continued rise in atmospheric CO<sub>2</sub> is most likely due to the sensitivity of terrestrial ecosystems to recent temperature and precipitation anomalies in 2015 and 2016 (Anderegg et al., 2015; Liu et al., 2017). Thus, long-term objectives of stabilizing atmospheric CO<sub>2</sub> concentrations below *dangerous levels* of atmospheric CO<sub>2</sub> (Hansen et al., 2008) can only be achieved by first reaching the short-term goal of stabilizing the growth rate of atmospheric CO<sub>2</sub>, which shows no indication of peaking.

While peaks in the growth rates of human population and emissions have occurred at the global scale (UN, 2012), there is considerable variability in the relative peaks of growth rates at regional scales (Figure 3). In Africa, there is no indication that a peak in population growth rate has been observed; however, it is remarkable to note that a peak in the emissions growth rate occurred in 2003 (Figure 3; blue). In Asia, a peak in the population growth rate occurred in 1987 and a peak in emissions growth rate happened in 2010 (Figure 3;

orange), but a peak in total emissions has yet to occur (Table 1). In Latin America, a peak in the population growth rate occurred in 1984 followed by a peak in the emissions growth rate in 2009 (Figure 3; purple), with absolute emissions appearing to have peaked in 2014 (Table 1). In North America (Figure 3; green), a peak in population growth rate occurred in 1997 and a peak in emissions growth rate happened in 1969, but nearly four decades passed before total emissions peaked in 2007. In Oceania (Figure 3; cyan) the population growth rate peaked in 2009 and the emissions growth rate peaked in 1986, with peak emissions occurring in 2009. In Europe peaks in population growth rate were observed in 1961 and followed by peaks in emission growth rates in 1975. It is also noteworthy that Europe is the only region in which peaks in both total human population have been observed in 1996 and total emissions in 1990 (Table 1). It is evident that the lag between peaks in the growth rate of emissions and peaks in absolute emissions have varied widely by region, from just 5 years in Latin America to almost 40 years in North America. While it is clear that at the global scale we have not reached peak emissions within 5 years of the peak in emissions growth rate that

**Table 1**

*Peaks in Growth Rate and Quantity for Human Population, Fossil Fuel Emissions, and the Atmospheric Growth Rate at Regional and Global Scales*

| Region        | Year PPGR | Year PP | Year PFGR | Year PF |
|---------------|-----------|---------|-----------|---------|
| Africa        | ?         | ?       | 2003      | ?       |
| Asia          | 1987      | ?       | 2010      | ?       |
| Europe        | 1961      | 1996    | 1975      | 1990    |
| Latin America | 1984      | ?       | 2009      | 2014    |
| North America | 1997      | ?       | 1969      | 2007    |
| Oceania       | 2008      | ?       | 1986      | 2009    |
| Global        | 1987      | ?       | 2010      | ?       |

*Note.* Human population data from United Nations world census data and emissions data are from Global Carbon Budget (GCB) and Carbon Dioxide Information Analysis Center (CDIAC) (Le Quéré et al., 2015). Years of peak in human population growth rate (PPGR), and peak population (PP), as well as peak fossil fuel emissions growth rate (PFGR), and peak emissions (PF) are shown regionally and globally.

occurred in 2010, it is also clear that we cannot afford to wait four decades to reach peak fossil fuel emissions in order to prevent 2 °C of warming (Rogelj et al., 2016).

### 3. Conclusions: Policy Implications

We propose that a multipronged targeted policy is required to reduce future emissions and ultimately stabilize atmospheric CO<sub>2</sub>. Based on population and emission data, we have identified nations in three tiers: Tier 1 (countries that have already reached peak emissions and peak population; mainly European nations), Tier 2 (countries that have reached peak emissions but not peak population; mainly nations in the Americas and Oceania), and Tier 3 (countries that have not reached peaks in emissions or population; mainly Asian and African nations). We have also devised specific policy recommendations for nations by tier:

- Tier 1 nations: intellectual and resource investment in negative emission technologies (NETS), including active carbon dioxide removal (CDR) strategies, and greater efficiency and deployment of renewable energy technologies (RETs) for Tiers 2 and 3 countries.
- Tier 2 nations: continued deployment of RETs and increasing investment in NETS, while investing in greater efficiency and deployment of RETs in Tier 3 countries.
- Tier 3 nations: investment in RETs to reduce future emissions and improve human well-being.

Therefore, it is evident that the most effective strategy for quickly stabilizing atmospheric CO<sub>2</sub> is to stabilize emissions and stabilize human population. For instance, per capita emissions have stabilized in Africa due to a decrease in energy emission intensity, despite a continued increase in population. Thus, peak absolute emissions in Africa can be achieved most quickly by further decreases in emission intensity combined with population stabilization. This can be accomplished by deployment of renewable energy technologies in lieu of fossil-based energy technologies and providing equal gender access to education (Bongaarts, 2016). In fact the most expeditious way to stabilize atmospheric CO<sub>2</sub> may be through the investment of Tier 1 nations into the deployment of existing RETs in Tier 3 nations. It is also clear, that in order to meet emission reduction targets to avoid 2 °C warming by 2100 (Rogelj et al., 2016), we must develop active CDR technologies to complement existing passive CDR services currently provided by terrestrial and marine ecosystems (Field & Mach, 2017). Society should also be prepared for a scenario in which fossil fuel emissions peak in the coming years, but the growth rate of atmospheric CO<sub>2</sub> continues to rise. Such a *negative-emission positive-growth* scenario is not only possible but also predictable as negative fertilization feedbacks disengage and positive climate feedbacks engage (Jones et al., 2016). It is critical that under such a scenario, society remains steadfast in its commitment to renewable energy and redouble its investment in NETS. Lastly, incremental goals should make the ultimate objective of stabilizing atmospheric CO<sub>2</sub> at a safe level less daunting by first stabilizing the atmospheric CO<sub>2</sub> growth rate.

### 4. Supplementary Methods

For global and regional population estimates we relied on recently compiled data from the UN (2012). Errors in national census data vary by an order of magnitude; however, based on previous analyses we assumed a 10% 2 $\sigma$  error for global population estimates (Bongaarts, 2016). These errors were propagated to our growth rate estimates at the global scale (Figure 1) but not at the regional scale (Figure 3) because the errors for certain regions were considered to be unreliable.

Fossil fuel emission estimates included coal, oil, and gas, as well as cement production and gas flaring (Boden et al., 2013). We did not include potential emissions from land use change in our analysis because these emissions are highly uncertain (Houghton & Nassikas, 2017) and have shown no significant change over the last 50 years (Ballantyne et al., 2015). Because fossil fuel emissions are based on well-constrained estimates of consumption by fuel type, the main source of error is due to emission factors (Liu et al., 2015). However, fossil fuel CO<sub>2</sub> emissions 2 $\sigma$  errors from developed nations are approximately 5% compared to the 2 $\sigma$  errors from developing nations that are approximately 10% leading to relatively small errors in global fossil fuel emission inventories. Furthermore there are errors based on different fossil fuel inventories. The total 2 $\sigma$  error on global fossil fuel emissions is approximately 13% as of 2015 (Ballantyne et al., 2015). Nonetheless, resolving fossil fuel emissions at regional to continental scales can be challenging and verifying apparent changes in emissions from atmospheric measurements is difficult due to temporal autocorrelation of errors and sparse sampling networks (Y. Wang et al., 2017).

The major source of error in estimating the annual AGR of atmospheric CO<sub>2</sub> (e.g., AGR) is mainly due to biases and incompleteness of the surface sampling network (Masarie & Tans, 1995). To estimate how sampling error contributes to our estimate of AGR, we used a bootstrap method to simulate different configurations of the global sampling network. For each bootstrap simulation different sites were randomly selected with geographic distribution from approximately 40 sites located within the marine boundary layer. AGRs were calculated by subtracting mean December and January values from the previous year from mean December and January values from the current year. The overall, 1 $\sigma$  error for the entire AGR time series is 15%; however, these errors have gone down considerably since 1980 when the global sampling network was greatly expanded.

For statistical analyses we used the *findpeak* function in MatLab to locate local maxima in time series of emissions and population growth rates. We also used a 10-year moving window to test the slope of the sensitivity between the AGR and emissions and AGR and temperature data from NASA Goddard Institute for Space Studies (Schmidt et al., 2009).

### Acknowledgments

This work was supported by National Science Foundation (NSF) Grant 1633831, Agence Nationale de la Recherche (ANR), as well as a Macron MOPGA fellowship to A. P. Ballantyne. All atmospheric CO<sub>2</sub> data are available from the National Oceanographic and Atmospheric Administration (<https://www.esrl.noaa.gov/gmd/ccgg/trends/global.html>). All fossil fuel emission data are available from the Carbon Dioxide Information Analysis Center ([http://cdiac.ess-dive.lbl.gov/trends/emis/meth\\_reg.html](http://cdiac.ess-dive.lbl.gov/trends/emis/meth_reg.html)). All human population data are from the United Nations Population database (<https://population.un.org/wpp/>).

### References

- Anderegg, W. R. L., Ballantyne, A. P., Smith, W. K., Majkut, J., Rabin, S., Beaulieu, C., et al. (2015). Tropical nighttime warming as a dominant driver of variability in the terrestrial carbon sink. *Proceedings of the National Academy of Sciences of the United States of America*, 112(51), 15,591–15,596. <https://doi.org/10.1073/pnas.1521479112>
- Ballantyne, A. P., Andres, R., & Houghton, R. (2015). Audit of the global carbon budget: Estimate errors and their impact on uptake uncertainty. Retrieved from <http://www.biogeosciences.net/12/2565/2015/bg-12-2565-2015.pdf>
- Betts, R. A., Jones, C. D., Knight, J. R., Keeling, J. R., & Kennedy, J. J. (2016). El Niño and a record CO<sub>2</sub> rise. *Nature Climate Change*, 6(9), 806–810. <https://doi.org/10.1038/nclimate3063>
- Boden, T. A., Andres, R. J., & Marland, G. (2013). *Global, regional, and national fossil-fuel CO<sub>2</sub> emissions (1751–2010)(V. 2013)*. Oak Ridge, TN (United States): Carbon Dioxide Information Analysis Center (CDIAC), Oak Ridge National Laboratory (ORNL). Retrieved from <https://www.osti.gov/biblio/1389328>
- Bongaarts, J. (2016). Development: Slow down population growth. *Nature*, 530(7591), 409–412. <https://doi.org/10.1038/530409a>
- Cox, P. M., Pearson, D., Booth, B. B., Friedlingstein, P., Huntingford, C., Jones, C. D., & Luke, C. M. (2013). Sensitivity of tropical carbon to climate change constrained by carbon dioxide variability. *Nature*, 494(7437), 341–344. <https://doi.org/10.1038/nature11882>
- Davis, S. J., Cao, L., Caldeira, K., & Hoffert, M. I. (2013). Rethinking wedges. *Environmental Research Letters*, 8(1), 011001. <https://doi.org/10.1088/1748-9326/8/1/011001>
- Deffeyes, K. S. (2008). *Hubbert's peak: The impending world oil shortage* (new ed.). Princeton, NJ: Princeton University Press. Retrieved from <https://market.android.com/details?id=book-5kP287d90sC>
- Field, C. B., & Mach, K. J. (2017). Rightsizing carbon dioxide removal. *Science*, 356(6339), 706–707. <https://doi.org/10.1126/science.aam9726>
- Hansen, J., Sato, M., Kharecha, P., Beerling, D., Berner, R., Masson-Delmotte, V., et al. (2008). Target Atmospheric CO<sub>2</sub>: Where Should Humanity Aim? *The Open Atmospheric Science Journal*, 2(1), 217–231. <https://doi.org/10.2174/1874282300802010217>
- Houghton, R. A., & Nassikas, A. A. (2017). Global and regional fluxes of carbon from land use and land cover change 1850–2015. *Global Biogeochemical Cycles*, 31, 456–472. <https://doi.org/10.1002/2016gb005546>
- Intergovernmental Panel on Climate Change (2014). *Climate change 2013: The physical science basis: Working Group I Contribution to the Fifth Assessment Report of the Intergovernmental Panel on Climate Change*. Geneva, Switzerland: Cambridge University Press. Retrieved from <https://market.android.com/details?id=book-o4gaBQAQBAJ>
- Jackson, R. B., Canadell, J. G., Le Quééré, C., Andrew, R. M., Korsbakken, J. I., Peters, G. P., & Nakicenovic, N. (2015). Reaching peak emissions. *Nature Climate Change*, 6(1), 7–10. <https://doi.org/10.1038/nclimate2892>
- Jones, C. D., Ciais, P., Davis, S. J., Friedlingstein, P., Gasser, T., Peters, G. P., et al. (2016). Simulating the Earth system response to negative emissions. *Environmental Research Letters*, 11(9), 095012. <https://doi.org/10.1088/1748-9326/11/9/095012>
- Le Quééré, C., Moriarty, R., Andrew, R. M., Peters, G. P., Ciais, P., Friedlingstein, P., et al. (2015). Global carbon budget 2014. *Earth System Science Data*, 7(1), 47–85. <https://doi.org/10.5194/essd-7-47-2015>
- Liu, J., Bowman, K. W., Schimel, D. S., Parazoo, N. C., Jiang, Z., Lee, M., et al. (2017). Contrasting carbon cycle responses of the tropical continents to the 2015–2016 El Niño. *Science*, 358(6360), eaam5690. <https://doi.org/10.1126/science.aam5690>
- Liu, Z., Guan, D., Wei, W., Davis, S. J., Ciais, P., Bai, J., et al. (2015). Reduced carbon emission estimates from fossil fuel combustion and cement production in China. *Nature*, 524(7565), 335–338. <https://doi.org/10.1038/nature14677>
- Maggio, G., & Cacciola, G. (2012). When will oil, natural gas, and coal peak? *Fuel*, 98, 111–123. <https://doi.org/10.1016/j.fuel.2012.03.021>
- Masarie, K. A., & Tans, P. P. (1995). Extension and integration of atmospheric carbon dioxide data into a globally consistent measurement record. *Journal of Geophysical Research*, 100(D6), 11593. <https://doi.org/10.1029/95JD00859>
- Obama, B. (2017). The irreversible momentum of clean energy. *Science*, 355(6321), 126–129. <https://doi.org/10.1126/science.aam6284>
- Pacala, S., & Socolow, R. (2004). Stabilization wedges: Solving the climate problem for the next 50 years with current technologies. *Science*, 305(5686), 968–972. <https://doi.org/10.1126/science.1100103>
- Peters, G. P., Marland, G., Le Quééré, C., Boden, T., Canadell, J. G., & Raupach, M. R. (2011). Rapid growth in CO<sub>2</sub> emissions after the 2008–2009 global financial crisis. *Nature Climate Change*, 2, 2. <https://doi.org/10.1038/nclimate1332>
- Rogelj, J., den Elzen, M., Höhne, N., Fransen, T., Fekete, H., Winkler, H., et al. (2016). Paris Agreement climate proposals need a boost to keep warming well below 2 °C. *Nature*, 534(7609), 631–639. <https://doi.org/10.1038/nature18307>
- Schmidt, G., Ruedy, R., Persin, A., Sato, M., Lo, K., Team, G., & Others (2009). *NASA GISS surface temperature (GISTEMP) analysis*. Carbon Dioxide Information Analysis Center (CDIAC). Oak Ridge, TN. Retrieved from <https://www.osti.gov/scitech/servlets/purl/1389297>
- United Nations (2012). World population prospects. <https://doi.org/10.18356/08b807d4-en>
- United Nations (2013). Population data. <https://doi.org/10.18356/1b762159-en>

- Wang, X., Piao, S., Ciais, P., Friedlingstein, P., Myneni, R. B., Cox, P., et al. (2014). A two-fold increase of carbon cycle sensitivity to tropical temperature variations. *Nature*, *506*(7487), 212–215. <https://doi.org/10.1038/nature12915>
- Wang, Y., Broquet, G., Ciais, P., Chevallier, F., Vogel, F., Kadyrov, N., et al. (2017). Estimation of observation errors for large-scale atmospheric inversion of CO<sub>2</sub> emissions from fossil fuel combustion. *Tellus Series B: Chemical and Physical Meteorology*, *69*(1), 1325723. <https://doi.org/10.1080/16000889.2017.1325723>