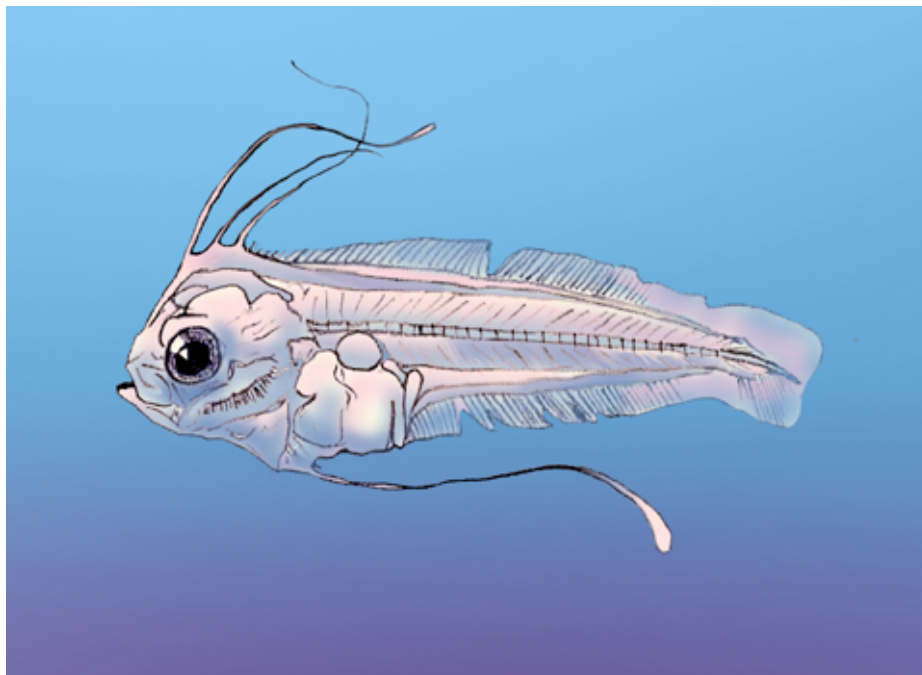

Coastal and Estuarine Data Archaeology and Rescue Program

Charles M. Breder, Jr: Drawings



March 2004



US Department of Commerce
National Oceanic and Atmospheric Administration
Silver Spring, MD

MOTE
MARINE LABORATORY
Mote Marine Laboratory
Sarasota, FL

Charles M. Breder, Jr: Drawings

A. Y. Cantillo
NOAA National Ocean Service

S. M. Stover
Arthur Vining Davis Library
Mote Marine Laboratory

(Editors)



March 2004

United States
Department of Commerce

National Oceanic and
Atmospheric Administration

National Ocean Service

Donald L. Evans
Secretary

Conrad C. Lautenbacher, Jr.
Vice-Admiral (Ret.),
Administrator

Jamison S. Hawkins
Acting Assistant Administrator

For further information please call or write:

NOAA/National Ocean Service/National Centers for Coastal Ocean Science
1305 East West Hwy.
Silver Spring, MD 20910
301 713 3020

Arthur Vining Davis Library
Mote Marine Laboratory
1600 Ken Thompson Parkway
Sarasota, FL 34236
941 388 4441

COVER: Larval fish by Dr. Charles M. Breder, Jr., (pencil drawing, 1919).

Disclaimer

This report has been reviewed by the National Ocean Service of the National Oceanic and Atmospheric Administration (NOAA) and approved for publication. Mention of trade names or commercial products does not constitute endorsement or recommendation for their use by the United States Government.

TABLE OF CONTENTS

LIST OF PLATES.....	i
ABSTRACT.....	1
INTRODUCTION.....	1
LITERATURE CITED.....	1
ACKNOWLEDGMENTS.....	2
SMALL DRAWINGS.....	3
LARGE DRAWINGS.....	21

LIST OF PLATES

1.	Larval fish.....	3
2.	Larval fish.....	3
3.	Larval fish.....	4
4.	Larval fish.....	4
5.	Larval fish.....	5
6.	Larval fish.....	5
7.	Larval fish.....	6
8.	Larval fish.....	6
9.	Larval fish.....	7
10.	Larval fish.....	7
11.	Larval fish.....	8
12.	<i>Argyropelecus olfersi</i> (Cuvier).....	8
13.	<i>Brevoortia</i>	9
14.	Larval fish.....	9
15.	Approaches <i>melanostomus</i>	10
16.	Larval fish.....	10
17.	Larval fish.....	11
18.	<i>Citharichthys arctifrons</i>	11
19.	<i>Etropus</i>	12
20.	Larval fish.....	12
21.	Larval fish.....	13
22.	Larval fish.....	13
23.	Larval fish.....	14
24.	<i>Lophopsetta maculata</i>	14
25.	<i>Aspidophoroides monopterygius</i>	15
26.	<i>Apogon</i> (?).....	15

27.	<i>Apogonichthys</i> (?)	16
28.	Larval fish.....	16
29.	<i>Paralichthys</i>	17
30.	<i>Grampus</i>	17
31.	<i>Grampus</i>	18
32.	<i>Grampus</i>	18
33.	<i>Grampus</i>	19
34.	<i>Grampus</i>	19
35.	<i>Lophopsetta maculata</i>	20
36.	Egg "A", tow # 1.....	21
37.	Egg "A", tow # 7.	22
38.	Egg "A", tow # 10.	23
39.	Egg "C", tow # 1.	24
40.	Egg "C", tow #2.	25
41.	Egg "C", tow #9.	26
42.	Egg "E", tow #1.....	27
43.	Egg "E" in early stage.	28
44.	Egg "E".	29
45.	Egg "F", tow #7.	30
46.	Egg "F".	31
47.	Egg "F".	32
48.	Egg "G", tow #9.....	33
49.	Egg "H", tow #9.	34
50.	Egg "I", tow #10.	35
51.	Egg "J", tow #10.	36
52.	Egg "K", tow #14.	37
53.	Ovarian egg.....	38

54.	Unknown larvae.	39
55.	<i>Hepsetia stipes</i> egg, Dry Tortugas.....	40

Charles M. Breder, Jr.: Drawings

A. Y. Cantillo and S. M. Stover*
(Editors)
NOAA National Ocean Service
Silver Spring, MD

ABSTRACT

Among the papers of Dr. Charles M. Breder bequeathed to the Mote Marine Laboratory by the Breder family are a series of drawings of larval fish and eggs done from 1917 through 1929. The drawings were made with pencil on half and full sheets of buff colored paper. The half sheet drawings are of larval fish, most of which are not identified. The full sheet drawings often contain comments and notes related to laboratory work on fish egg development, and made during the summer of 1929 when Breder was working in the Dry Tortugas.

INTRODUCTION

The papers of Dr. Charles M. Breder were bequeathed to the Mote Marine Laboratory by Dr. Breder's family. The material includes field diaries, drawings, photographs and loose notes. This publication contains the drawings stored at the Arthur Vining Davis Library of Mote Marine Laboratory, Sarasota, FL.

The drawings were made with pencil on half and full sheets of buff colored paper. The half sheet drawings are of larval fish, most of which are not identified. The full sheet drawings often contain comments and notes related to laboratory work on fish egg development. Most of the full sheet drawings were made during the summer of 1929 when Breder was working in the Dry Tortugas. Breder's 1929 field diary contains comments regarding the eggs in the drawings. The transcription of the field diary and biographical material about Dr. Breder can be found in Cantillo, Collins and Clark (2001). The drawings were scanned and JPG format files of the scans are part of this CD publication.

LITERATURE CITED

Cantillo, A. Y., E. Collins and E. Clark (eds.) (2001) Charles M. Breder, Jr.: Dry Tortugas 1929. NOAA/Mote Marine Laboratory Joint Publication. CD NOAA Technical Memorandum NOS NCCOS CCMA 150. NOAA LISD Current References 2001-2. Mote Technical Report No. 802. NOAA/NOS/NCCOS, Silver Spring, MD. 79 pp.

* Arthur Vining Davis Library, Mote Marine Laboratory, Sarasota, FL.

ACKNOWLEDGMENTS

The editor wishes to thank the Breder Family and Susan Stover of the Mote Marine Laboratory Library. The transcription is part of the Coastal and Estuarine Data/Document Archeology and Rescue (CEDAR) Project funded by NOAA/COP for the South Florida Ecosystem Restoration, Prediction and Modeling Program and the South Florida Living Measurements Resource Program.

