

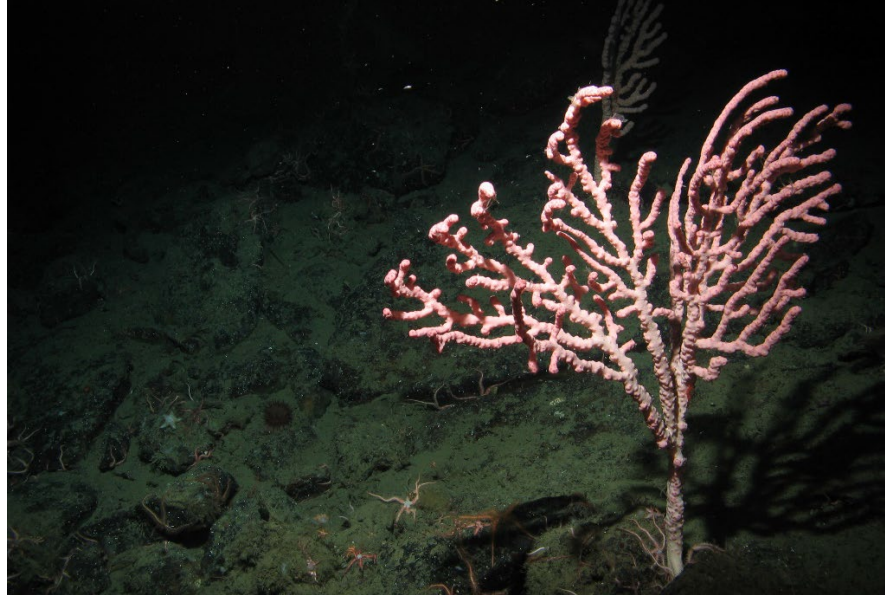


**NOAA
FISHERIES**

List of Deep-Sea Coral Taxa in the U.S. West Coast Region: Depth and Geographic Distribution (v. 2021)

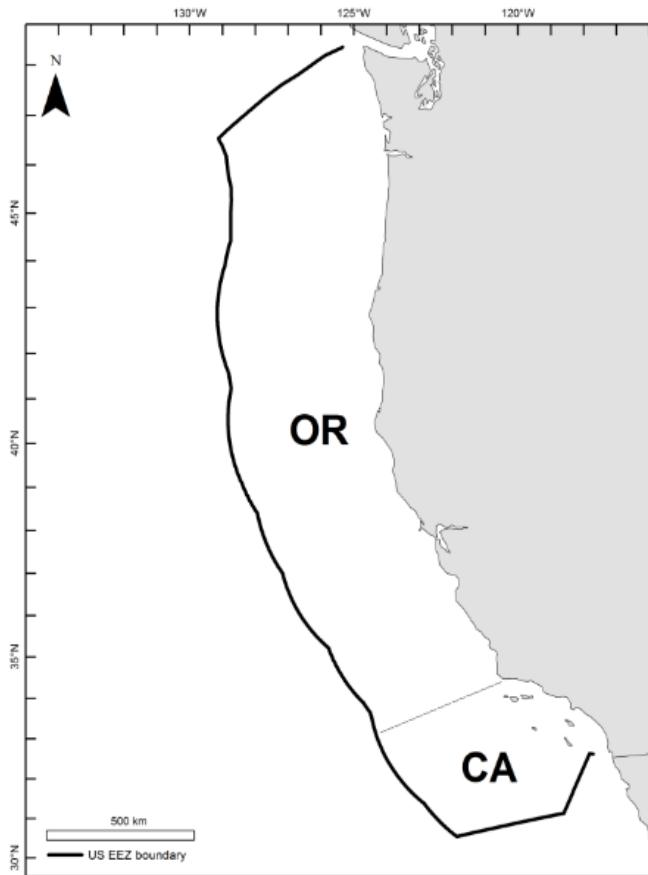
**Meredith V. Everett^{1*}, Thomas F. Hourigan², Curt E. Whitmire³,
M. Elizabeth Clarke¹, Stephen D. Cairns⁴, and Elizabeth A. Horvath⁴**

1. NOAA Northwest Fisheries Science Center, Seattle, WA (*Corresponding Author: Meredith.Everett@noaa.gov)
2. NOAA Deep Sea Coral Research and Technology Program, Office of Habitat Conservation, Silver Spring, MD
3. NOAA Fishery Resource Analysis & Monitoring Division, Northwest Fisheries Science Center, Monterey, CA
4. National Museum of Natural History, Smithsonian Institution, Washington, DC
5. Westmont College, Santa Barbara, CA; Invertebrate Laboratory, Santa Barbara Museum of Natural History, Santa Barbara, CA



List of Deep-Sea Coral Taxa in the U.S. West Coast Region: Depth and Geographic Distribution (v. 2021)

This annex to the U.S. West Coast chapter in “The State of Deep-Sea Coral and Sponge Ecosystems of the United States” provides a list of deep-sea coral taxa in the Phylum Cnidaria, Classes Anthozoa and Hydrozoa, known to occur in U.S. waters off Washington, Oregon, and California (Figure 1). Deep-sea corals are defined as azooxanthellate, heterotrophic coral species generally occurring in waters 50 meters deep or more. Details are provided on the vertical and geographic extent of each species (Table 1). This list is an update of the peer-reviewed 2017 list by Whitmire et al. (2017) and includes taxa recognized through 2021. Taxonomic names are generally those currently accepted in the World Register of Marine Species ([WoRMS](#)), and are arranged by order, and alphabetically within order by family, genus, and species. Data sources (references) listed are those principally used to establish geographic and depth distribution.



Regional geographic distribution within U.S. waters is divided into two biogeographic provinces: the Oregon Province (OR), which extends from around the Northern tip of Vancouver Island, Canada, to around Point Arguello/Point Conception, USA; and the California Province (CA), which extends south from there to around Magdalena Bay, Mexico.

In summary, we have confirmed the reported presence of 141 unique coral taxa in U.S. waters off Washington, Oregon, and California. Octocorals were the most speciose (101 taxa total: 73 alcyonaceans and 29 pennatulaceans), followed by scleractinians (20 taxa), antipatharians (13 taxa), and stylasterid corals (6 species). At least 19 of these taxa have not been identified to species. Seven new species have been described from the region since the 2017 West Coast deep-sea coral taxa list. Two species (*Muricea californica* and *Muricea fruticosa*) that were included in the 2017 list have been removed, as it appears that they are restricted to depths shallower than 50 meters (Horvath 2019).

Figure 1. U.S. West Coast region, delimiting biogeographic boundaries considered in this work, divided into the Oregon Province (OR) and the California Province (CA).

Recommended citation: Everett MV, Hourigan TF, Whitmire CE, Clarke ME, Cairns SD, Horvath EA (2022) List of Deep-Sea Coral Taxa in the U.S. West Coast Region: Depth and Geographic Distribution (v.2021).

Cover Photo: A large colony of the bubblegum coral, *Paragorgia yutlinux*, at a depth of 586 m off Northern California near the border with Oregon. Image credit: NOAA/Marine Applied Research and Exploration (MARE)

Table 1. List of known deep-sea coral species in the Phylum Cnidaria, Class Anthozoa and Class Hydrozoa, and their reported distributions in U.S. waters off Washington, Oregon, and California. Blue shaded fields indicate newly described species since 2017. Bold text indicates these new descriptions as well as other changes to the list found in Whitmire et al. (2017), including additions or range extensions, with new species denoted with an asterisk (*), and changes in taxonomy since 2017, denoted with a cross (†) (e.g., species that were listed in 2017, but have since been given a new name or alternative spelling). “NR” indicates a lack of reported distribution or depth information. References are numbered to correspond with citations following the table, along with notes (in superscript letters) pertaining to individual taxa. Distribution: OR = records from the Oregon Province; CA = records from the California Province.

Higher Taxon	Species	Distribution	Depth Range (m)	References
Class Anthozoa				
Subclass Hexacorallia				
Order Antipatharia				
Family Antipathidae	<i>Antipathes dendrochristos</i> Opresko, 2005	OR,CA	91-427	1,2,3,4,5
Family Cladopathidae	<i>Chrysopathes speciosa</i> Opresko, 2003	OR,CA	225-1400	1,6
	<i>Heteropathes</i> sp. ^a (= <i>Heliopathes</i> sp.)	OR	1700-3200	1,7
	<i>Trissopathes pseudotrística</i> Opresko, 2003	OR,CA	227-2972	6
Family Schizopathidae ^b	<i>Alternatipathes alternata</i> (Brook, 1889) (= <i>Bathypathes alternata</i> Brook, 1889)	OR	412-4881	1,7,8
	<i>Alternatipathes bipinnata</i> (Opresko, 2005) (= <i>Umbellapathes bipinnata</i> Opresko, 2005)	OR,CA	1205-1718	1,9
	<i>Alternatipathes venusta</i> Opresko & Wagner, 2020	OR	2821	1,10
	<i>Bathypathes alaskensis</i> Opresko & Molodtsova, 2021	OR	272-1200	1,11
	<i>Bathypathes patula</i> Brook, 1889	OR	225-4868	1
	<i>Bathypathes tiburonae</i> Opresko & Molodtsova, 2021	OR	3121-3150	1,11
	* <i>Lillipathes quadribachiata</i> (van Pesch, 1914)	OR	1363-1545	1
	<i>Lillipathes wingi</i> Opresko, 2005	OR	877-904	1
	<i>Parantipathes</i> sp.	OR,CA	490-2820	1
Higher Taxon	Species	Distribution	Depth Range (m)	References
Order Scleractinia				
Family Caryophylliidae	<i>Caryophyllia (Caryophyllia) arnoldi</i> Vaughan, 1900	OR,CA	40-656	12
	<i>Caryophyllia (C.) diomedea</i> Marenzeller, 1904	CA	225-2200	13,14
	<i>Caryophyllia (C.) quadragenaria</i> Alcock, 1902	CA	54-1669	12,13
	<i>Coenocyathus bowersi</i> Vaughan, 1906	OR,CA	13-708	12,15
	<i>Crispatotrochus foxi</i> (Durham & Barnard, 1952)	CA	82-272	12,16
	<i>Desmophyllum dianthus</i> (Esper, 1794)	OR,CA	37-1330	7,12,15
	<i>Labyrinthocyathus quaylei</i> (Durham, 1947)	OR,CA	37-293	12
	<i>Lophelia pertusa</i> (Linnaeus, 1758) ^c †[= <i>Desmophyllum pertusum</i> (Linnaeus, 1758)]	OR,CA	39-2775	12,15
	<i>Nomlandia californica</i> Durham & Barnard, 1952	CA	82	12,16
	<i>Paracyathus montereyensis</i> Durham, 1947	OR	75-146	12
<i>Paracyathus stearnsii</i> Verrill, 1869	OR,CA	6-835	12,15	
Family Dendrophylliidae	<i>Balanophyllia (Balanophyllia) elegans</i> Verrill, 1864	OR,CA	1-1553	12,15
	<i>Dendrophyllia oldroydae</i> Oldroyd, 1924	CA	40-576	12
Family Flabellidae	<i>Javania californica</i> Cairns, 1994	OR	62-1553	12

Higher Taxon	Species	Distribution	Depth Range (m)	References
Family Flabellidae cont.	<i>Polymyces montereyensis</i> (Durham, 1947)	OR,CA	69-212	1,17
Family Fungiacyathidae	<i>Fungiacyathus (Bathyactis) marenzelleri</i> (Vaughan, 1906)	OR,CA	1820-6328	12
Family Micrabaciidae	<i>Leptopenus discus</i> Moseley, 1881	OR,CA	3599-5000	12
	* <i>Leptopenus hypocoelus</i> Moseley, 1881	CA	4100	1
Family Oculinidae	<i>Madrepora oculata</i> Linnaeus, 1758	CA	84-490	1,12
	<i>Oculina profunda</i> Cairns, 1991	OR	119-578	1,12

Higher Taxon	Species	Distribution	Depth Range (m)	References
Class Anthozoa				
Subclass Octocorallia				
Order Alcyonacea				
Family Acanthogorgiidae	<i>Acanthogorgia gracillima</i> Kükenthal, 1908	CA	160-220	18,19
	<i>Acanthogorgia</i> spp. ^d	OR,CA	49-2301	19,20,21
	* <i>Calcigorgia japonica</i> Dautova, 2007 ^e	OR	228	1,22
	<i>Calcigorgia spiculifera</i> Broch, 1935	OR	144-1159	21,22
	<i>Muricella complanata</i> Wright & Studer, 1889	OR	521-653	1,19,23
Family Alcyoniidae	<i>Bathyalcyon robustum</i> Versluys, 1906 (= <i>Anthomastus robustum</i>)	OR	2449-3961	7,20
	<i>Eleutherobia rubra</i> (Brundin, 1896)	OR,CA	80-905	1
	<i>Heteropolypus ritteri</i> (Nutting, 1909) (= <i>Anthomastus ritteri</i> Nutting, 1909)	OR,CA	35-3330	7,17,21,24,25
Family Anthothelidae	<i>Anthothela pacifica</i> (Kükenthal 1913)	OR,CA	201-350	18,19,26,27
Family Chrysogorgiidae	<i>Chrysogorgia monticola</i> Cairns, 2007	OR	1711-3015	28
	<i>Chrysogorgia pinnata</i> Cairns, 2007	OR,CA	1968-3275	28,29
	<i>Iridogorgia</i> sp.	OR,CA	2027-2215	7,28,29
	* <i>Radicipes stonei</i> Cordeiro, Cairns & Pérez, 2017	OR	NR	9,26
Family Clavulariidae	<i>Clavularia grandiflora</i> (Nutting, 1908)	OR	593-1529	7,29
	<i>Clavularia</i> sp. A	OR	0-200	26
	<i>Clavularia</i> sp. H	CA	NR	15,30
	<i>Telesto californica</i> Kükenthal, 1913	CA	55-91	1,15
	<i>Telesto nuttingi</i> Kükenthal, 1913	CA	75-108	1,15
	<i>Telestula ambigua</i> Nutting, 1909	OR	958	25,26
Family Coralliidae	† <i>Coralliidae</i> spp. ^f	OR,CA	628-2447	20,29
	* <i>Hemicorallium regale</i> (Bayer, 1956) (= <i>Corallium regale</i>)	OR	1482	1,19

Higher Taxon	Species	Distribution	Depth Range (m)	References
Family Gorgoniidae ^g	<i>Adelogorgia phyllosclera</i> Bayer, 1958 ^h	CA	9-595	15,18,21,31,32
	<i>Eugorgia daniana</i> Verrill, 1868 (= <i>Leptogorgia daniana</i> (Verrill, 1868))	CA	6-70	32,33
	<i>Eugorgia ljubenkovia</i> Horvath, 2019	CA	30-98	32
	<i>Eugorgia rubens</i> Verrill, 1868 (= <i>Leptogorgia rubens</i> (Verrill, 1868))	OR,CA	30-200+	15,21,32,33
	<i>Leptogorgia chilensis</i> Verrill, 1868	OR,CA	5-231	1,15,18,21,32,34
	<i>Leptogorgia filicrispa</i> Horvath, 2011	CA	20-87	32,35
	<i>Leptogorgia</i> sp. A (<i>sensu</i> Horvath 2019) (likely <i>L. tricolorata</i> Breedy and Cortés, 2011)	CA	36-91	32
Family Keratoisididae ⁱ (Formerly Isididae)	<i>Acanella</i> sp.	OR,CA	975-2844	7,20
	<i>Bathygorgia profunda</i> (Wright, 1885)	OR	1405	29
	<i>Isidella tentaculum</i> Etnoyer, 2008	OR,CA	720-2400	7,36
	*Keratoisididae (Clade 5, B1 <i>sensu</i> Watling et al 2022)	OR	1425	1
	*Keratoisididae (Clade 5, F1 <i>sensu</i> Watling et al 2022)	OR	1504	9
	<i>Keratois flabellum</i> (Nutting, 1908)	OR	1829-2012	17
	<i>Keratois philippinensis</i> (Wright and Studer, 1889)	OR	1262-1463	17
	<i>Keratois</i> spp. ^j	OR,CA	436-3260	1,7,37,38
† <i>cf. Lepidisis</i> sp. ^k	OR,CA	180-3317	1,7	
Family Nephtheidae	<i>Gersemia juliepackardae</i> Williams and Lundsten, 2009	OR,CA	519-2034	39
	<i>Gersemia rubiformis</i> (Ehrenberg, 1834) (= <i>Capnella rubiformis</i> , <i>Eunephthya rubiformis</i> , <i>Alcyonium</i> sp. indet. <i>sensu</i> Williams 2013) ^l	OR	9-137	26,40
	<i>Neospongodes</i> sp.	OR	1600	17
Family Paragorgiidae	† <i>Paragorgia pacifica</i> Verrill, 1922^m (= <i>Paragorgia arborea</i> var. <i>pacifica</i> (Verrill, 1922); <i>Paragorgia arborea</i> (Linnaeus, 1758) – in part – NE Pacific populations)	OR,(CA?)	18-2936	1,18,19,41 42,43
	<i>Paragorgia regalis</i> Nutting, 1912	CA	1031-1840	1,19,41
	<i>Paragorgia stephencairnsi</i> Sanchez, 2005	OR,CA	40-490	1,42,44
	<i>Paragorgia yutlinus</i> Sanchez, 2005	OR,CA	487-861	1,44
	<i>Sibogagorgia californica</i> Horvath 2019	OR,CA	300-486	19
	<i>Sibogagorgia cauliflora</i> Herrera, Baco & Sánchez, 2010	OR,CA	2493-3042	45
Family Plexauridae ⁿ	<i>Chromoplexaura cordellbankensis</i> Williams & Breedy, 2019	OR	86-107	46
	<i>Chromoplexaura marki</i> (Kükenthal, 1913) (= <i>Euplexaura marki</i> Kükenthal, 1913)	OR,CA	9-200	5,17,18,32,40
	<i>Heterogorgia tortuosa</i> Verrill, 1868	CA	0-130	15,17

Higher Taxon	Species	Distribution	Depth Range (m)	References
Family Plexauridae cont.	*Placogorgia sp. A sensu Horvath 2019	CA	82-145	18,32
	<i>Psammogorgia arbuscula</i> (Verrill, 1866)	CA	64-95	17
	<i>Swiftia farallonesica</i> Williams and Breedy, 2016	OR	181-190	47,48
	<i>Swiftia kofoidi</i> (Nutting, 1909) ^o	OR,CA	91-2393	1,17,18,21,37
	<i>Swiftia pacifica</i> (Nutting, 1912) ^o	OR,(CA)	89-1245	1,18,21,37,49
	<i>Swiftia pusilla</i> (Nutting, 1909) ^p	CA	166-177	37,50
	<i>Swiftia simplex</i> (Nutting, 1909) (= <i>Psammogorgia simplex</i> Nutting, 1909)	OR,CA	147-2123	1,18,21,29, 37,49,51
	<i>Swiftia spauldingi</i> (Nutting, 1909)	OR	49-342	1,18,21,37,49
	<i>Swiftia torreyi</i> (Nutting, 1909) (= <i>Psammogorgia torreyi</i> Nutting, 1909)	OR,CA	30-1752	1,26,37
	†* <i>Thesea variabilis</i> (Studer 1894) (= <i>Thesea</i> sp. A sensu Cadien et al. 2018 ^a)	CA	27-200	15,37,52
<i>Thesea</i> sp. B sensu Cadien et al. 2018 ^a	CA	27-200	15,37	
Family Primnoidae ^r	† <i>Callogorgia kinoshitai</i> (Kükenthal, 1913) (= <i>Callogorgia kinoshitae</i> Kükenthal, 1913)	OR,CA	99-2189	17,37,53
	† <i>Calyptrophora antilla</i> Bayer, 2001 ^s (previously reported as <i>Calyptrophora</i> cf. <i>antilla</i>)	OR	1110-1763	1,28
	<i>Calyptrophora bayeri</i> Cairns, 2007	OR	1683	28,53
	<i>Calyptrophora laevispinosa</i> Cairns, 2007	OR	3107	28,53
	<i>Narella alaskensis</i> Cairns and Baco, 2007	CA	2192-3075	1,54
	<i>Narella bowersi</i> (Nutting, 1908)	OR	1218-2600	28
	<i>Parastenella gymnogaster</i> Cairns, 2007	OR	1962-2773	1,28
	<i>Parastenella pacifica</i> Cairns, 2007	OR	1498-2086	18,28,37
	<i>Parastenella ramosa</i> (Studer, 1894)	OR,CA	619-3427	21,23,28
	† <i>Plumarella</i> sp. cf. <i>P. longispina</i> Kinoshita, 1908 ^t	OR,CA	55-735	1,17,18,21,37
	<i>Primnoa pacifica</i> Kinoshita, 1907	OR,(CA?) ^u	272-279	1,21,37,53
Family Victorgorgiidae	† <i>Victorgorgia argentea</i> (Studer, 1894) (= <i>Anthothela argentea</i> Studer, 1894)	OR,CA	490-1050	1,27
Family Xeniididae	<i>Anthelia</i> sp.	OR	1034-1107	17
Order Pennatulacea				
Family Anthoptilidae	<i>Anthoptilum grandiflorum</i> (Verrill, 1879) (= <i>Anthoptilum thomsoni</i> Kölliker, 1880; <i>Anthoptilum simplex</i> Kölliker; <i>Benthoptilum sertum</i> Verrill, 1885)	OR,CA	72-3651	1,17,21,25,55 , 56
	<i>Anthoptilum lithophilum</i> Williams and Alderslade, 2011	OR,CA	669-2240	7,57
Family Balticinidae ^v	† <i>Balticina californica</i> (Moroff, 1902) (= <i>Halipterus californica</i> , <i>H. contorta</i> Nutting, 1909; <i>Stachyptilum quadridentatum</i> Nutting, 1909)	OR,CA	46-2780	1,15,17,21,25 , 29

Higher Taxon	Species	Distribution	Depth Range (m)	References
Family Balticinidae cont.	† <i>Balticina willemoesi</i> (Kölliker, 1870) [= <i>Halipterus willemoesi</i> Kölliker, 1870; <i>H. septentrionalis</i> (Gray 1872)]	OR	75-1164	1,17,21
Family Funiculinidae	<i>Funiculina armata</i> (Verrill, 1879)	CA	611-1097	1,55
	<i>Funiculina parkeri</i> (Kükenthal, 1909)	OR,CA	200-1409	1,17,25
	<i>Funiculina quadrangularis</i> (Pallas, 1766)	OR,CA	763-2740	17,21
Family Kophobelemnidae	<i>Kophobelemnon affine</i> (Studer, 1894)	OR	2430-2710	25
	<i>Kophobelemnon hispidum</i> Nutting, 1912	OR	NR	26,55
	<i>Kophobelemnon macrospinosum</i> Thomson, 1927 ^w	OR	2434-2499	26,29
Family Pennatulidae	* <i>Pennatula murrayi</i> Kölliker, 1880	OR,CA	2453-3953	7,58
	<i>Pennatula phosphorea</i> Linnaeus, 1758 (= <i>Pennatula phosphorea</i> var. <i>californica</i> (Kükenthal, 1913); <i>Pennatula californica</i> Kükenthal 1913)	OR,CA	519-2825	1,15,17,21,25
	<i>Ptilosarcus gurneyi</i> (Gray, 1860) (= <i>Ptilosarcus quadrangularis</i> (Moroff, 1902))	OR,CA	0-475	1,15,17,21,25 , 55
Family Protoptilidae	<i>Distichoptilum gracile</i> Verrill, 1882 (= <i>Distichoptilum verrilli</i> (Studer, 1901))	OR,CA	1881-3361	1,17,21,25
	<i>Distichoptilum rigidum</i> (Nutting, 1912) ^x (= <i>Helicoptilum rigidum</i> (Nutting, 1912))	OR	1862-1937	26,55
	<i>Protoptilum nybakkeni</i> Williams & Lipski, 2019 ^y	OR	2300-3975	59
Family Scleroptilidae	<i>Scleroptilum</i> sp.	OR	109	55
Family Stachyptilidae	<i>Stachyptilum superbum</i> (Studer, 1894)	OR,CA	388-1244	15,21,25
Family Umbellulidae	<i>Umbellula huxleyi</i> Kölliker, 1880	CA	914-927	1,60
	<i>Umbellula lindahli</i> Kölliker, 1875 ^z	OR,CA	41-3873	17,26,29
	<i>Umbellula magniflora</i> Kölliker, 1880	OR,CA	854-1084	1,25,29
Family Virgulariidae	<i>Acanthoptilum album</i> Nutting, 1909	OR	10-150	25,61
	<i>Acanthoptilum annulatum</i> Nutting, 1909	OR	146	1,17,60
	<i>Acanthoptilum gracile</i> (Gabb, 1863)	OR,CA	5-1981	21,25,61
	<i>Acanthoptilum scalpellifolium</i> Moroff, 1902	CA	11-79	1,17
	<i>Stylatula elongata</i> (Gabb, 1862)	OR,CA	2-55(820) ^{aa}	25,55,62
	<i>Stylatula gracilis</i> (Gabb, 1862) ^{bb}	OR,CA	50-261	25,62
	<i>Virgularia agassizi</i> Studer, 1894 (= <i>Virgularia cystiferum</i> (Nutting, 1909))	CA	30-1000	15,25
	† <i>Virgularia reinwardtii</i> Herklots, 1858 ^{cc} (= <i>Virgularia californica</i> Pfeffer, 1886)	CA	5-90	63

Higher Taxon	Species	Distribution	Depth Range (m)	References
Class Hydrozoa				
Subclass Hydroidolina				
Order Anthoathecata				
Family Stylasteridae	<i>Errinopora pourtalesii</i> (Dall, 1884)	OR	40-658	64
	<i>Stylanthea papillosa</i> (Dall, 1884) (= <i>Stylanthea petrograpta</i> (Fisher, 1938); <i>Stylanthea porphyra</i> Fisher 1931)	OR	0-140	64
	<i>Stylaster californicus</i> (Verrill, 1866)	OR,CA	4-126	17,29,65
	<i>Stylaster parageus columbiensis</i> Cairns and Linder, 2011	OR	246-285	64
	<i>Stylaster venustus</i> (Verrill, 1870)	OR	10-108	64
	<i>Stylaster verrillii</i> (Dall, 1884)	OR	21-393	64

Notes

- a. Two specimens in the National Museum of Natural History – identified as: *Heteropathes cf. pacifica* USNM 1234550, and *Heteropathes* sp. USNM 1234539. Also an image of *Heteropathes* sp. not *H. pacifica*: *Heteropathes* (Opresko DM, 2011). The Deep-Sea Guide (DSG). Monterey Bay Aquarium Research Institute (MBARI). Consulted on: 2019-07-03.
- b. Black corals identified as belonging to the genera *Bathypathes*, *Lillipathes*, *Parantipathes*, and *Umbellapathes* have also been observed off S. California (CA province), but have not been identified to species. L. Lundsten (pers. com.).
- c. Transfer of *Lophelia pertusa* to the genus *Desmophyllum* has been proposed recently based on genetic similarity of mitochondrial genomes and microsatellites (Addamo et al. 2016), and this change has been accepted by WoRMS. However, we have retained given *Lophelia pertusa* given the broad recognition of, and extensive literature on, this species under the traditional name.
- d. At least two additional *Acanthogorgia* spp. have been identified. One deeper water species appears to be *Acanthogorgia spissa* Kükenthal, 1908, which has also been identified from Alaska and British Columbia.
- e. A specimen collected in Olympic Coast National Marine Sanctuary was initially identified as *Calcigorgia beringi* (included in Whitmire et al. 2017), this was subsequently identified as *C. japonica* by Matsumoto et al. 2019, with *C. beringi* restricted to the Aleutian Islands.
- f. Colonies of unidentified coralliids have been observed in both the Californian and Oregonian provinces. In the previous list these were designated as *Corallium* sp., however, with the resurrection of two additional genera in this family, the family name appears to be more appropriate at this time. Horvath (2019, Part 1) identified one specimen from the Santa Barbara Museum of Natural History (SBMNH) collected in the Channel Islands as likely to be *Hemicorallium ducale* (Bayer, 1955). *Hemicorallium imperiale* (Bayer, 1955) and *H. ducale* have both been collected from Fiberling Guyot, west of the Channel Islands, but outside the U.S. EEZ, and so are likely to also occur within U.S. waters.

- g. Gorgoniidae: In addition to the species listed here, two additional gorgoniid species, *Leptogorgia diffusa* (Verrill, 1868) and *Leptogorgia flexilis* (Verrill, 1868), are found in the Southern California Bight, but appear to be limited to depths shallower than 50 m (Horvath 2019, Part II).
- h. Breedy and Guzman have suggested that the genus *Adelogorgia* be placed in the Family Plexauridae, rather than Gorgoniidae. This revision has not been incorporated in WoRMS.
- i. Saucier et al. (2021) have revised the phylogeny of the bamboo corals (formerly Isididae), resulting in five families. The bamboo corals described from the U.S. West Coast Region all belong in the new family Keratoisididae. Watling et al. (2022) subsequently evaluated specimens in the large Family Keratoisididae, identifying distinct clades and subclades based on morphological and DNA sequence data. Very few of the specimens investigated, however, were from the U.S. West Coast.
- j. A number of specimens and observations of West Coast bamboo corals have been identified only as *Keratoisis* sp. These include specimens observed and collected from Southern California (CA province; NMNH Invertebrate Zoology Collections; SBMNH Invertebrate Zoology Online Collections), but not identified to species. Two specimens reported by Watling et al. (2022) from Davidson Seamount (depths 1571-1732m) correspond to their *Keratoisis* sp. 1 (Clade 5, B1) and *Keratoisis* sp. 5 (Clade 5, D1) and differ from *Keratoisis flabellum* (Clade 5, D1).
- k. Unbranched bamboo corals off the West Coast have generally been identified as *Lepidisis* sp. Watling and France (2021) recently redescribed the genus *Lepidisis*. They note that many species previously described as *Lepidisis* probably belong in different genera, therefore we have revised this category to “cf. *Lepidisis* sp.” pending further investigation. Some of the West Coast specimens previously
- l. *Gersemia rubiformis* (Ehrenberg, 1834) was identified by Williams (2013) as belonging in the family Alcyoniidae, genus *Alcyonium*. This change has not yet been reflected in WoRMS, and here we have retained *G. rubiformis*. Ref: Williams GC (2013) New taxa and revisionary systematics of alcyonacean octocorals from the Pacific coast of North America (Cnidaria, Anthozoa). ZooKeys: 15-42. Recent genetic studies (Everett, in prep.) including both molecular barcoding and genotyping by sequencing suggest that individuals identified as *G. rubiformis* in the Northeast Pacific may represent as many as three separate species from both *Gersemia* and *Alcyonium*.
- m. Herrera & Shank (2016; ref. 18) resurrected the species *Paragorgia pacifica* Verrill, 1922 for the north Pacific populations of formerly *P. arborea*. Further work is required to determine whether all the West Coast specimens previously identified as *P. arborea*, which span a considerable geographic and depth range, are properly attributed to *Paragorgia pacifica*.
- n. Plexauridae: There remains significant uncertainty over the species listed currently listed under the genera *Swiftia* and *Thesea* (reviewed by Horvath 2019, Part III). In addition to the species listed here, two common plexaurid species from the Southern California Bight, *Muricea californica* Aurivillius, 1931, *Muricea fruticosa* Verrill, 1868, were included in the 2017 list but removed from the current list as they appear to be limited to depths shallower than 50 m. An additional taxon in the 2017 list was represented as Plexaurid gen. et. sp. indet., based on a single specimen at California Academy of Sciences. We have removed this taxon from the current list for now, pending further study.
- o. *Swiftia kofoidi* (Nutting, 1909) and *Swiftia pacifica* (Nutting, 1912) are related species that exhibit geographic transitional morphology around Pt. Conception, CA, with most specimens identified as *S. kofoidi* collected from the southern end of the region (especially the CA province), while *S. pacifica* appears most often to the north with a distribution that extends to Alaska (Horvath 2019, Part III).
- p. Type material for *Swiftia pusilla* is limited and in poor condition. Its status as a separate species and placement in the genus *Swiftia* may be problematic. See discussion in Horvath (2019, Part III).
- q. Additional work is needed to determine if *Thesea* sp. A and *Thesea* sp. B represent different species (Horvath 2019, Part III).

- r. Two primnoids previously included in the 2017 list have been removed. *Parastenella doederleini* (Wright and Studer, 1889) does not appear to occur in this region. *Thouarella* sp. was based on a single specimen collected off Oregon (CAS 160149), and should await further examination of the specimen.
- s. The taxon previously reported as *Calyptrophora* cf. *antilla* in Cairns (2007) and the 2017 list is here presented as *Calyptrophora antilla* Bayer, 2001. Although *C. antilla* was initially described from the Western Atlantic, specimens from the U.S. West Coast are morphologically extremely similar.
- t. The West Coast species, long considered to be *Plumarella longispina* Kinoshita, 1908, has morphological differences from the Japanese holotype. This may represent a new species; it is therefore represented as *Plumarella* sp. cf. *P. longispina* Kinoshita, 1908.
- u. One specimen of *Primnoa pacifica* (USNM 57557) listed as collected off La Jolla, CA in 1904.
- v. The Family Halipteridae Williams, 1995 and Genus *Halipteris* Kölliker, 1870 have recently been synonymized with Balticinidae Balss, 1910 and *Balticina* Gray 1870, respectively by Perez et al. (2021).
- w. The MBARI deep-sea guide identifies *Kophobelemnon biflorum* Pasternak, 1960 as a synonym for *Kophobelemnon macrospinosum* Thomson, 1927, however, both taxa currently appear as “accepted” in WoRMS.
- x. WoRMS identifies *Distichoptilum rigidum* (Nutting, 1912) as a *nomen dubium*.
- y. The 2017 list included records of an unidentified *Protoptilum* sp. in several collections. This may or may not be the same as the newly described species.
- z. The 2017 list synonymized *Umbellula lindahli* Kölliker, 1875 and the Southern Ocean *Umbellula carpenteri* Kölliker, 1880 based on Broch (1958). Subsequent examination and genetic analysis by Dolan 2008 suggests that these are separate species. A single record of *U. carpenter* was reported from Monterey Canyon, but its identity has not been subsequently confirmed.
- aa. Williams and Matsumoto (2015) reviewed the genus *Stylatula*. They indicated that *Stylatula elongata* and *S. gracilis* may represent the same species, or, if valid, *S. gracilis* may only occur from the southern tip of Baja California to Panama.
- bb. *Stylatula elongata* is primarily a shallow-water species, with almost all records < 50 m. The depth record of 820 m appears to be based on a single specimen (CAS-IZ 131632) and may be in error.
- cc. *Virgularia californica* Pfeffer, 1886 has now been synonymized with *Virgularia reinwardtii* Herklots, 1858

Acknowledgements

This list represents an update of Whitmire et al. (2017), which in turn built upon an initial list by Whitmire & Clarke (2007). We would like to thank Drs. Marcelo Kitahara, Alberto Lindner, Dennis Opresko and Gary Williams, who provided thoughtful reviews. Drs. Heather Coleman and Arvind Shantharam assisted greatly with the references and design. This is a publication of NOAA’s Deep Sea Coral Research and Technology Program.

Literature Cited

- Addamo AM, Vertino A, Stolarski J, Garcia-Jimenez R, Taviani M, Machordom A (2016) Merging scleractinian genera: the overwhelming genetic similarity between solitary *Desmophyllum* and colonial *Lophelia*. *BMC Evol Biol* 16:108
- Breedy O, Guzman HM (2016) A revision of the genus *Muricea* Lamouroux, 1821 (Anthozoa, Octocorallia) in the eastern Pacific. Part II. *ZooKeys*:1-69
- Broch H (1958) Octocorals Part 1. Pennatularians. *Discovery Reports* 29: 245-280

- Dolan E (2008) Phylogenetics, systematics and biogeography of deep-sea Pennatulacea (Anthozoa, Octocorallia). Evidence from molecules and morphology. Ph.D. Dissertation. National Oceanography Centre, Southampton. UK 212 pp.
- Saucier EH, France SC, Watling Les (2021) Toward a revision of the bamboo corals: Part 3, deconstructing the Family Isididae. *Zootaxa* 5047:247-272
- Watling L, France SC (2021) Toward a Revision of the Bamboo Corals: Part 2, Untangling the Genus *Lepidisis* (Octocorallia: Isididae). *Bulletin of the Peabody Museum of Natural History* 62:97-110
- Watling L, Saucier EH, France SC (2022) Towards a revision of the bamboo corals (Octocorallia): Part 4, delineating the family Keratoisididae. *Zootaxa* 5093:337-375
- Whitmire CE, Clarke ME (2007) State of Deep Coral Ecosystems of the U.S. Pacific Coast: California to Washington. In: Lumsden SE, Hourigan TF, Bruckner AW, Dorr G (eds.) [The State of Deep Coral Ecosystems of the United States](#). NOAA Technical Memorandum CRCP-3. Silver Spring, MD
- Whitmire CE, Clarke ME, Yoklavich M, Everett MV, Hourigan TF (2017) Deep-Sea Coral Taxa in the U.S. West Coast Region: Depth and Geographical Distribution. Online resource: <https://deepseacoraldatanooa.gov/library/2017-state-of-deep-sea-corals-report>. National Oceanic and Atmospheric Administration

References

1. National Museum of Natural History (NMNH) (2022) Invertebrate Zoology Collections - Online Collection Database (Accessed 2022-01-25). U.S. National Museum of Natural History, Smithsonian Institution, Washington D.C.
2. Opresko DM (2005) A new species of antipatharian coral (Cnidaria: Anthozoa: Antipatharia) from the southern California Bight. *Zootaxa* 852:1-10
3. Tissot BN, Yoklavich MM, Love MS, York K, Amend M (2006) Benthic invertebrates that form habitat on deep banks off southern California, with special reference to deep sea coral. *Fishery Bulletin* 104
4. Huff DD, Yoklavich MM, Love MS, Watters DL, Chai F, Lindley ST (2013) Environmental factors that influence the distribution, size, and biotic relationships of the Christmas tree coral *Antipathes dendrochristos* in the Southern California Bight. *Marine Ecology Progress Series* 494:159-177
5. Etnoyer PJ, Cochrane G, Salgado E, Graiff KW, Roletto J, Williams G, Reyna K, Hyland J (2014) Characterization of deep coral and sponge communities in the Gulf of the Farallones National Marine Sanctuary: Rittenburg Bank, Cochrane Bank and the Farallon Escarpment. NOAA Technical Memorandum NOS NCCOS 190 NOAA National Centers for Coastal Ocean Science, Charleston, SC 32 pp
6. Opresko DM (2003) Revision of the Antipatharia (Cnidaria: Anthozoa). Part III. Cladopathidae. *Zool Med Leiden* 77:495-536
7. Jacobsen-Stout N, Kuhn L, Lundsten L, Schlining B, Schlining K, von Thun S (eds.) *The Deep-Sea Guide*. Accessed 08/08/2016 (and associated VARS (Video Annotation and Reference System) Records), Monterey Bay Aquarium Research Institute (MBARI)
8. Molodtsova TN, Opresko DM (2017) Black corals (Anthozoa: Antipatharia) of the Clarion-Clipperton Fracture Zone. *Marine Biodiversity* 47:349-365
9. Museum of Comparative Zoology at Harvard University (MCZ) (2019) Invertebrate Zoology Collections - Online Collection Database. Accessed 10/22/2019
10. Opresko DM, Wagner D (2020) New species of black corals (Cnidaria: Anthozoa: Antipatharia) from deep-sea seamounts and ridges in the North Pacific. *Zootaxa* 4868:543-559
11. Opresko DM, Molodtsova TN (2021) New species of deep-sea Antipatharians from the North Pacific (Cnidaria: Anthozoa: Antipatharia), Part 2. *Zootaxa* 4999:401-422
12. Cairns SD (1994) Scleractinia of the temperate North Pacific. *Smithsonian Contributions to Zoology* 554:1-150
13. González-Romero S, Reyes-Bonilla H, Cairns SD (2009) Range extensions of three species of the Family Caryophylliidae (Scleractinia) in the eastern Pacific Ocean. *JMBA2 - Biodiversity Records*
14. Kitahara MV, Cairns SD, Stolarski J, Blair D, Miller DJ (2010) A comprehensive phylogenetic analysis of the

- Scleractinia (Cnidaria, Anthozoa) based on mitochondrial CO1 sequence data. Plos One 5:e11490
15. Cadien DB, Lovell LL, Barwick KL (2018) A Taxonomic Listing of Benthic Macro- and Megainvertebrates from Infaunal & Epifaunal Monitoring and Research Programs in the Southern California Bight. Edition 12. Southern California Association of Marine Invertebrate Taxonomists; Natural History Museum of Los Angeles County Research & Collections, Los Angeles, CA
 16. Durham JW, Barnard JL (1952) Stony corals of the eastern Pacific collected by Velero III and Velero IV. Allan Hancock Pacific Expedition 16:1-110
 17. California Academy of Sciences (CAS) (2017) CAS Online Invertebrate Zoology Collection (Accessed 1/07/2017). California Academy of Sciences
 18. Santa Barbara Museum of Natural History (SBMNH) (2016) Invertebrate Zoology Online Collections Search (Accessed 11/19/2016). In: History SBMoN (ed)
 19. Horvath EA (2019) A review of gorgonian coral species (Cnidaria, Octocorallia, Alcyonacea) held in the Santa Barbara Museum of Natural History research collection: focus on species from Scleraxonia, Holaxonia, and Calcaxonia – Part I: Introduction, species of Scleraxonia and Holaxonia (Family Acanthogorgiidae). ZooKeys 860:1-66
 20. Burton EJ, Lundsten L (2008) Davidson Seamount Taxonomic Guide. Marine Sanctuaries Conservation Series
 21. Everett MV Unpublished specimens with morphological and genetic taxonomic identification. NOAA National Database of Deep-Sea Corals and Sponges
 22. Matsumoto AK, Van Ofwegen LP, Bayer FM (2019) A revision of the genus *Calcigorgia* (Cnidaria, Octocorallia, Acanthogorgiidae) with the description of three new species. Zootaxa 4571:1-27
 23. Cairns SD, Baco A (2007) Review and five new Alaskan species of the deep-water octocoral *Narella* (Octocorallia: Primnoidae). Systematics and Biodiversity 5:391-407
 24. Molodtsova TN (2013) Deep-sea mushroom soft corals (Octocorallia: Alcyonacea: Alcyoniidae) of the Northern Mid-Atlantic Ridge. Mar Biol Res 9:488-515
 25. Hochberg FG, Ljubenkov JC (1998) Class Anthozoa: Subclass Octocorallia - Orders Stolonifera and Pennatulacea. In: Scott PV, Blake JA (ed) Taxonomic atlas of the benthic fauna of the Santa Maria Basin and the western Santa Barbara Channel, Vol 3, The Cnidaria, Santa Barbara Museum of Natural History, Santa Barbara, California
 26. Austin WC (1985) An annotated checklist of marine invertebrates in the cold temperate northeast Pacific. Khoyatan Marine Laboratory
 27. Moore KM, Alderslade P, Miller KJ (2017) A taxonomic revision of *Anthothela* (Octocorallia: Scleraxonia: Anthothelidae) and related genera, with the addition of new taxa, using morphological and molecular data. Zootaxa 4304:1-212
 28. Cairns SD (2007) Calcaxonian Octocorals (Cnidaria; Anthozoa) from Eastern Pacific Seamounts. Proceedings of the California Academy of Sciences 58:511-541
 29. Monterey Bay Aquarium Research Institute (MBARI) (2012) Video Annotation and Reference System Records (VARs) accessed 8/28/2012.
 30. Hochberg FG (1979) (reported in Cadien & Lovell 2016).
 31. Breedy O, Guzman HM (2018) Revision of the genus *Adelogorgia* Bayer, 1958 (Cnidaria: Anthozoa: Octocorallia) with the description of three new species. Zootaxa 4369:327-348
 32. Horvath EA (2019) A review of gorgonian coral species (Cnidaria, Octocorallia, Alcyonacea) held in the Santa Barbara Museum of Natural History research collection: focus on species from Scleraxonia, Holaxonia, Calcaxonia – Part II: Species of Holaxonia, families Gorgoniidae and Plexauridae. ZooKeys 860:67-182
 33. Breedy O, Guzman HM, Vargas S (2009) A revision of the genus *Eugorgia* Verrill, 1868 (Coelenterata: Octocorallia: Gorgoniidae). Zootaxa 2151:1-46
 34. Breedy O, Guzman HM (2007) A revision of the genus *Leptogorgia* Milne Edwards & Haime, 1857 (Coelenterata: Octocorallia: Gorgoniidae) in the eastern Pacific. Zootaxa 1419:1-90
 35. Horvath EA (2011) An unusual new “sea fan” from the northeastern Pacific Ocean (Cnidaria: Octocorallia: Gorgoniidae). Proceedings of the Biological Society of Washington 124:45-52
 36. Etnoyer PJ (2008) A new species of *Isidella* bamboo coral (Octocorallia: Alcyonacea: Isididae) from northeast Pacific Seamounts. Proceedings of the Biological Society of Washington 121:541-553
 37. Horvath EA (2019) A review of gorgonian coral species (Cnidaria, Octocorallia, Alcyonacea) held in the Santa Barbara Museum of Natural History research collection: focus on species from Scleraxonia, Holaxonia, Calcaxonia

– Part III: Suborder Holaxonia continued, and suborder Calcaxonia. ZooKeys 860:183-306

38. Watling L, Saucier EH, France SC (2022) Towards a revision of the bamboo corals (Octocorallia): Part 4, delineating the family Keratoisididae. Zootaxa 5093:337-375
39. Williams GC, Lundsten L (2009) The nephtheid soft coral genus *Gersemia* Marenzeller, 1878, with the description of a new species from the northeast Pacific and a review of two additional species (Octocorallia; Alcyonacea). Zoologische Mededelingen, Leiden 83:1067–1081
40. Williams GC (2013) New taxa and revisionary systematics of alcyonacean octocorals from the Pacific coast of North America (Cnidaria, Anthozoa). ZooKeys:15-42
41. Herrera S, Shank TM (2016) RAD sequencing enables unprecedented phylogenetic resolution and objective species delimitation in recalcitrant divergent taxa. Molecular phylogenetics and evolution 100:70-79
42. Yoklavich MM, Laidig T, Kringsman L, Taylor A, Watters D, Love MS, Lundsten L, Negrete B (2011) A characterization of the coral and sponge community on Piggy Bank seamount in southern California from a survey using a remotely operated vehicle. A report to NOAA Deep-Sea Coral Research and Technology Program
43. Herrera S, Shank TM, Sanchez JA (2012) Spatial and temporal patterns of genetic variation in the widespread antitropical deep-sea coral *Paragorgia arborea*. Molecular ecology 21:6053-6067
44. Sánchez JA (2005) Systematics of the bubblegum corals (Cnidaria: Octocorallia: Paragorgiidae) with description of new species from New Zealand and the Eastern Pacific. Zootaxa:1-72
45. Herrera S, Baco A, Sanchez JA (2010) Molecular systematics of the bubblegum coral genera (Paragorgiidae, Octocorallia) and description of a new deep-sea species. Molecular phylogenetics and evolution 55:123-135
46. Williams G, Breedy O (2019) A New Species of Gorgonian Octocoral from the Mesophotic Zone off the Central Coast of California, Eastern Pacific with a Key to Related Regional Taxa (Anthozoa, Octocorallia, Alcyonacea). Proceedings of the California Academy of Sciences 65:143–158
47. Williams GC, Breedy O (2016) A new species of whip-like gorgonian coral in the Genus *Swiftia* from the Gulf of the Farallones in Central California, with a key to Eastern Pacific species in California (Cnidaria, Octocorallia, Plexauridae). Proceedings of the California Academy of Sciences 4-63:1-13
48. Graiff KW, Lipski D, Etnoyer PJ, Cochrane GR, Williams G, Salgado E (2016) Benthic Characterization of Deep-Water Habitat in the Newly Expanded Areas of Cordell Bank and Greater Farallones National Marine Sanctuaries. Marine Sanctuaries Conservation Series ONMS-16-01. U.S. Department of Commerce, National Oceanic and Atmospheric Administration, Office of National Marine Sanctuaries, Silver Spring, MD
49. Brancato MS, Bowlby E, Hyland J, Intelmann SS, Brenkman K (2007) Observations of Deep Coral and Sponge Assemblages in Olympic Coast National Marine Sanctuary, Washington. Cruise Report: NOAA Ship McArthur II Cruise AR06-06/07. Marine Sanctuaries Conservation Series NMSP-07-04. U.S. Department of Commerce, National Oceanic and Atmospheric Administration, National Marine Sanctuary Program, Silver Spring, MD
50. Breedy O, Guzman HM (2016) Corrigenda: Breedy O, Guzman HM (2015) A revision of the genus *Muricea* Lamouroux, 1821 (Anthozoa, Octocorallia) in the eastern Pacific. Part I: *Eumuricea* Verrill, 1869 revisited. ZooKeys 537:1-32
51. Everett MV, Park LK, Berntson EA, Elz AE, Whitmire CE, Keller AA, Clarke ME (2016) Large-Scale Genotyping-by-Sequencing Indicates High Levels of Gene Flow in the Deep-Sea Octocoral *Swiftia simplex* (Nutting 1909) on the West Coast of the United States. Plos One 11:e0165279
52. Breedy O, Guzman HM (2018) A new alcyonacean species (Cnidaria: Anthozoa: Octocorallia) from a seamount in the tropical Pacific Ocean. Bulletin of Marine Science 94:1515-1524
53. Cairns SD, Bayer FM (2009) A generic revision and phylogenetic analysis of the Primnoidae (Cnidaria: Octocorallia). Smithsonian Contributions to Zoology 629:1-79
54. Baco AR, Cairns SD (2012) Comparing molecular variation to morphological species designations in the deep-sea coral *Narella* reveals new insights into seamount coral ranges. Plos One 7:e45555
55. Belcik FP (1977) A distribution study of the octocorallia of Oregon. Publ Seto Mar: Biol Lab XXIV:49-52
56. Williams GC (2011) The Global Diversity of Sea Pens (Cnidaria: Octocorallia: Pennatulacea). PLoS-One 6(7): e22747
57. Williams GC, Alderslade P (2011) Three new species of pennatulacean octocorals with the ability to attach to rocky substrata (Cnidaria: Anthozoa: Pennatulacea). Zootaxa 3001:33-48
58. Dolan E, Tyler PA, Yesson C, Rogers AD (2013) Phylogeny and systematics of deep-sea sea pens (Anthozoa: Octocorallia: Pennatulacea). Molecular phylogenetics and evolution 69:610-618
59. Williams G, Lipski D (2019) The Pennatulacean Genus *Protoptilum*, with the Description of a New Deep-Sea

- Species from the Continental Slope of Central California (Octocorallia, Pennatulacea, Protoptilidae). Proceedings of the California Academy of Sciences 66:105-116
60. Kükenthal W (1913) Über die Alcyonarienfauna Californiens und ihre tiergeographischen Beziehungen. Zoologische Jahrbücher. Systematik 35:219-270
 61. Nutting CC (1909) Alcyonaria of the California Coast. Proceedings of the US National Museum 35:681- 727
 62. Williams GC, Matsumoto AK (2015) A review of the pennatulacean Genus *Stylatula*, with the description of a new species from Japan (Cnidaria: Octocorallia). Proceedings of the California Academy of Sciences Series 4, Volume 62:257-266
 63. Cadien DB, Lovell LL, Barwick KL (2021) A Taxonomic Listing of Benthic Macro- and Megainvertebrates from Infaunal & Epifaunal Monitoring and Research Programs in the Southern California Bight. Edition 13. Southern California Association of Marine Invertebrate Taxonomists; Natural History Museum of Los Angeles County Research & Collections, Los Angeles, CA
 64. Cairns SD, Lindner A (2011) A revision of the Stylasteridae (Cnidaria, Hydrozoa, Filifera) from Alaska and adjacent waters. ZooKeys:1-88
 65. Fisher WK (1938) Hydrocorals of the North Pacific Ocean. Proceedings of the United States National Museum 84:493-554