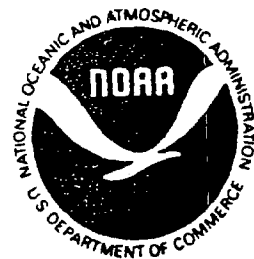
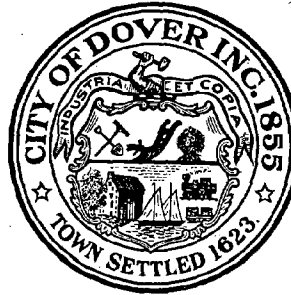


HT168.D68C63 1995 c.2

Cochecho Riverwalk Picnic Shelters Final Report

June 30, 1995



This report concerning Phase I elements of the Cochecho Riverwalk picnic shelter project was funded in part by a grant from the Office of State Planning, New Hampshire Coastal Program, as authorized by the National Oceanic and Atmospheric Administration (NOAA), Grant Award Number NA370Z0277.

HT
168
.D68
C63
1995
c2



TABLE OF CONTENT

Narrative

Project Summary

Renderings and Maps

Photos

Selected Press Coverage

Interim Reports



Narrative

NARRATIVE

The City of Dover was awarded supplemental NH Coastal Program Funds to construct two picnic shelters and amenities at the Cochecho Riverwalk. The NH Coastal Program provided to the City of Dover matching funds during the 1994 - 1995 budget cycle to establish the Cochecho Riverwalk, located at Henry Law Park.

The picnic shelters were identified as one of many elements by the Cochecho Riverwalk Master Plan. The shelter design was donated by Lassel Architects of South Berwick, Maine. The structures are post and beam with cedar shingle roofs. All who viewed the structures have been impressed by them.



Project Summary

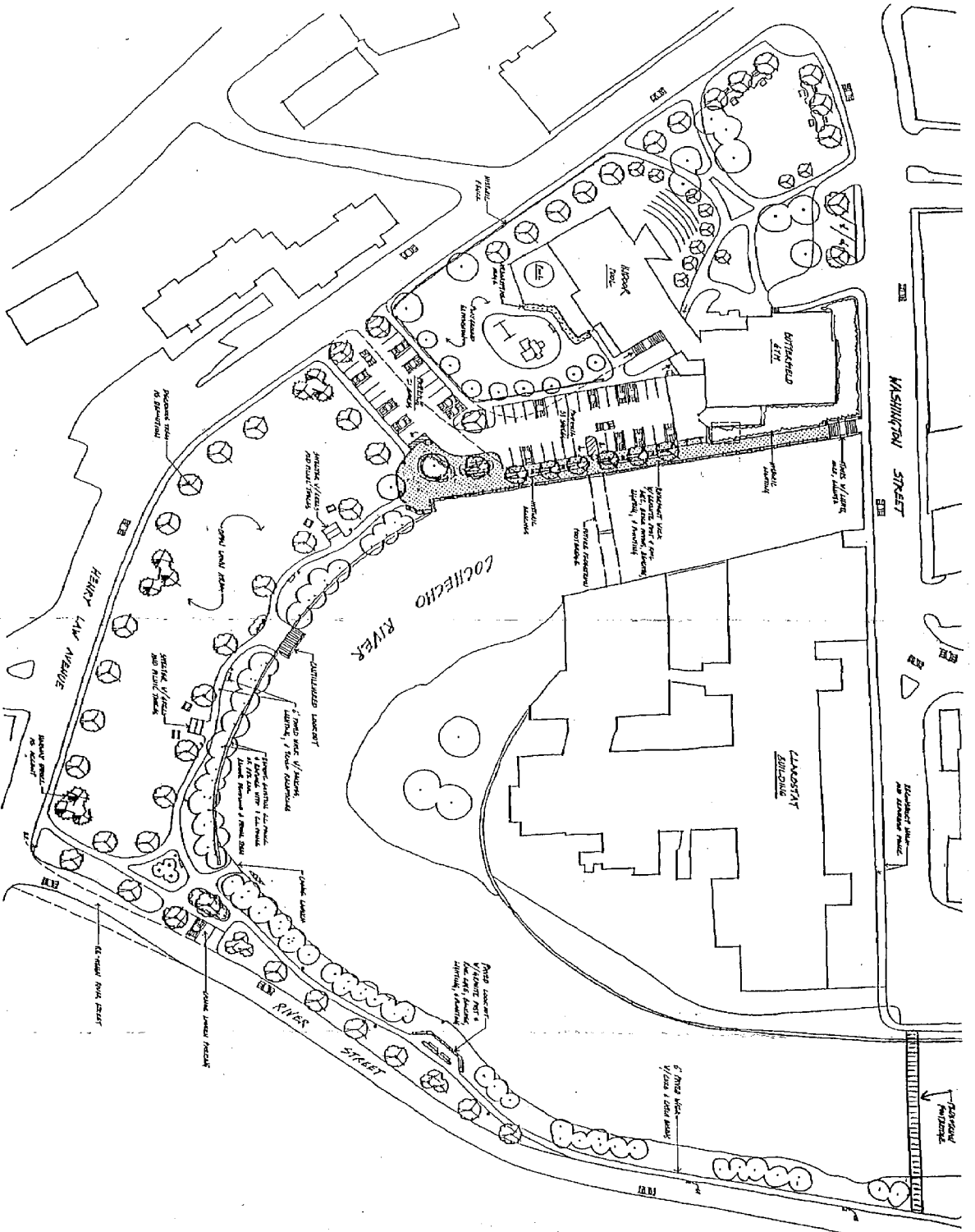
PROJECT SUMMARY

Two new picnic shelters were constructed at the Cochecho Riverwalk. Picnic tables, trash containers, handicap accessible walkways and charcoal grills are included. A water line was installed to provide water at the shelters as well.

The project was most fortunate to receive labor from International Brotherhood of Carpenters and Joiners. The union operates an apprenticeship program in Dover, and incorporated the shelters into their teaching program.



Renderings and Maps

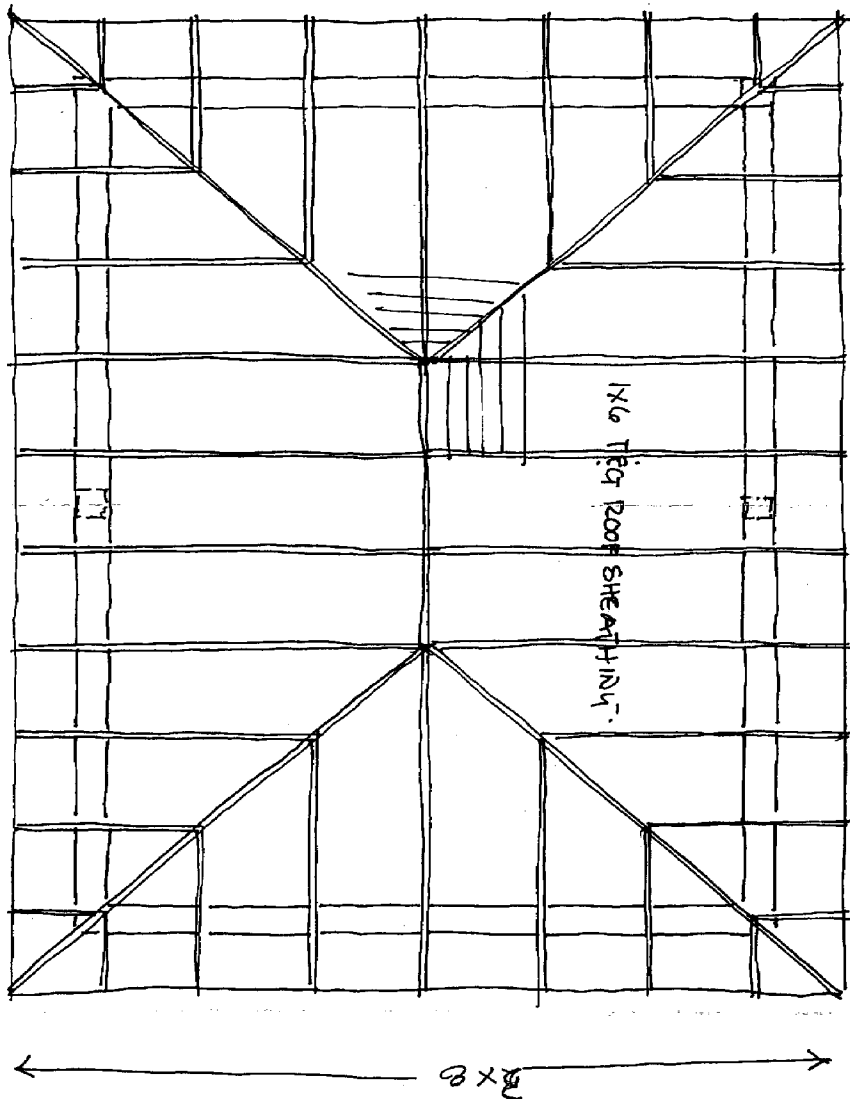


HENRY LAW PARK / COCHECHO RIVER WALK MASTERPLAN

DOVER, NEW HAMPSHIRE

CIVIL ENGINEERING - AIRSPACE ENGINEERING, INC.
 LANDSCAPE ARCHITECTURE - THE CALDERWOOD COMPANY
 SCALE: 1/8" = 1'-0"
 DATE: 9/20/14





TIMBER FRAME PICNIC SHELTER
DOVER RIVER OFF
FRAMING PLAN
3/8" = 1'-0"

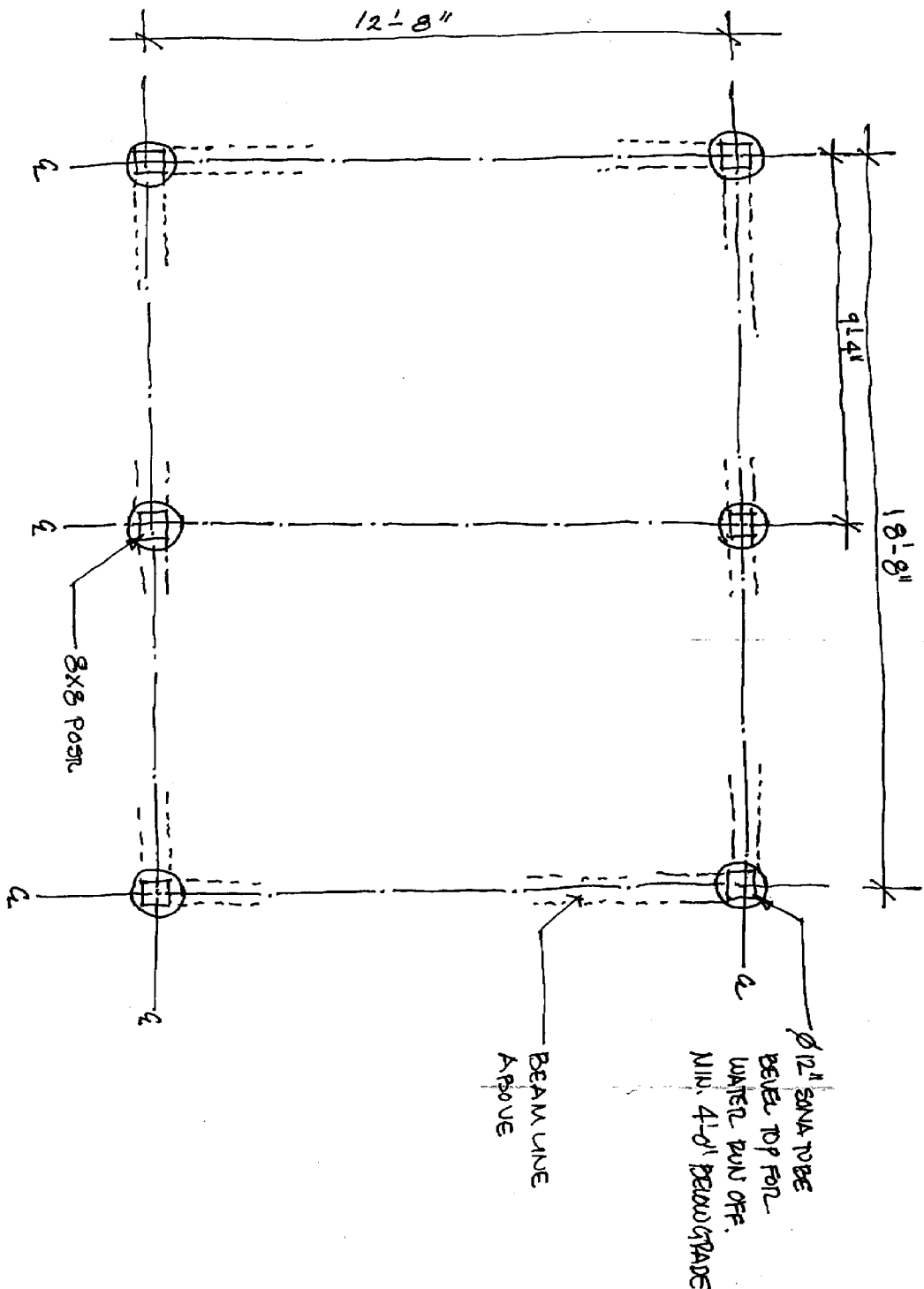
SCHEMATIC FRAMING PLAN

DATE PLOTTED	DATE
SCALE	SCALE
DRAWN BY	DATE
CHECKED BY	DATE
DATE	DATE

NEW PICNIC SHELTER
DOVER, NEW HAMPSHIRE

LASSEL ARCHITECTS
64 HIGHLAND AVENUE • SOUTH BERWICK, MAINE 03908 • 207.364.2048

A-11



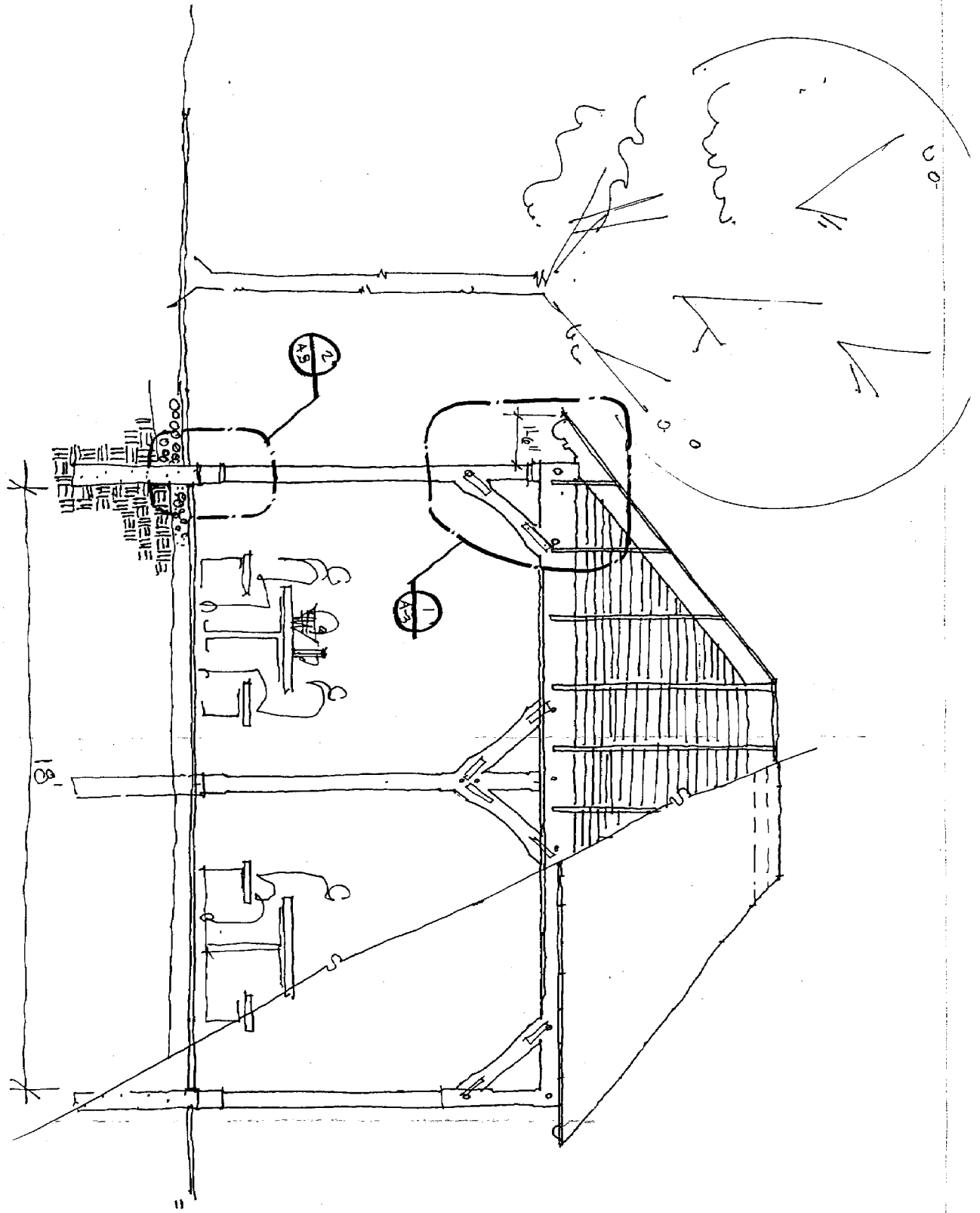
FOUNDATION PLAN PICNIC SHELTER
 3/8" = 1'-0"

SCHEMATIC FRAMING PLAN

DATE PLOTTED	SCALE
	DATE
DRAWN BY	CHECK BY
	DATE
PROJECT	NO.

NEW PICNIC SHELTER
 DOVER, NEW HAMPSHIRE

LASSEL ARCHITECTS
 64 HIGHLAND AVENUE • SOUTH BERWICK, MAINE 03906 • 207.384.2049



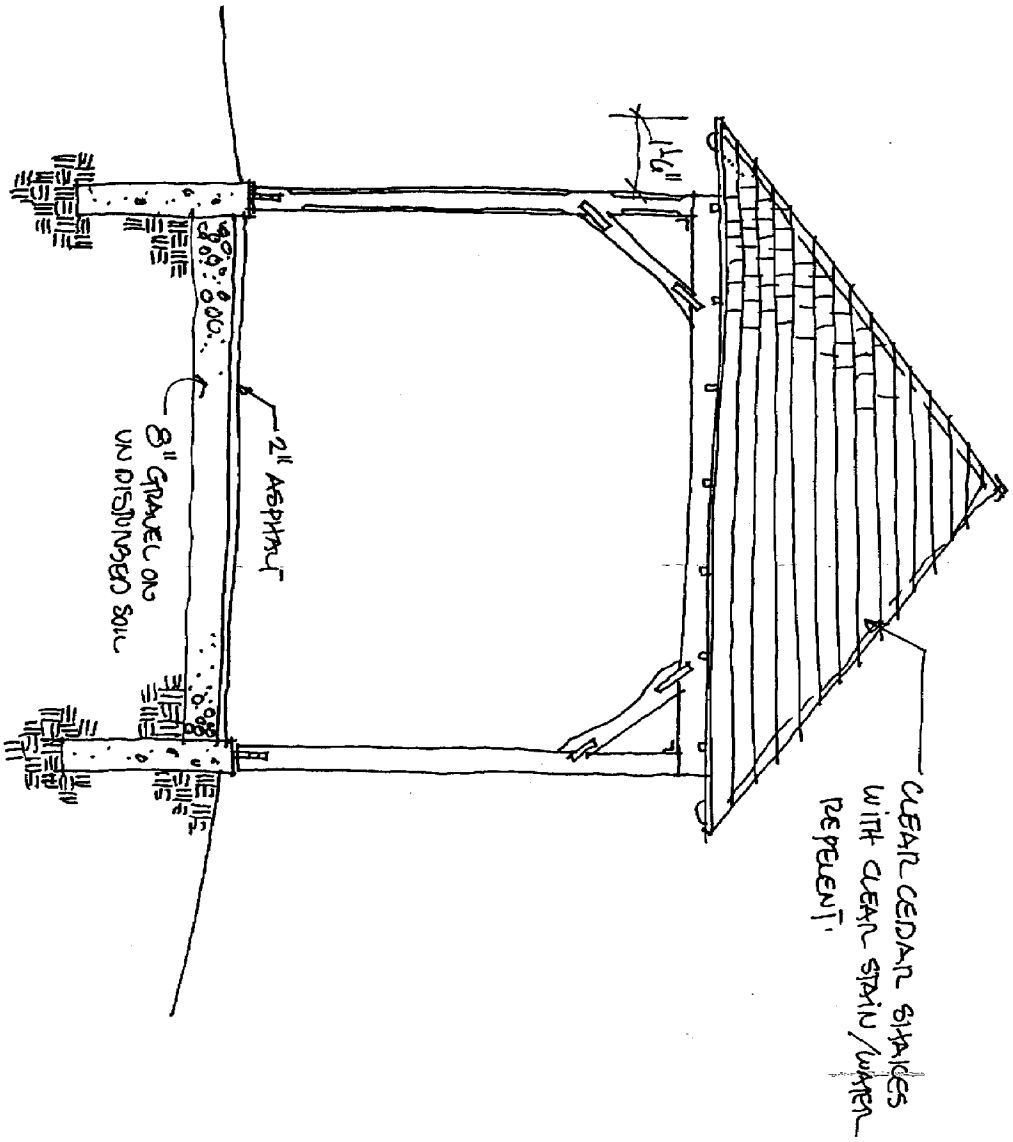
LONG SECTION/ELEVATION

3/8" = 1'-0" SCHEMATIC ELEVATIONS

DATE	SCALE	DESIGN BY	DATE
07/11	3/8" = 1'-0"	CHAD BROWN	07/11
		PAULINE	

NEW PICNIC SHELTER
DOVER, NEW HAMPSHIRE

LASSEL ARCHITECTS
64 HIGHLAND AVENUE • SOUTH BERWICK, MAINE 03908 • 207.384.2049

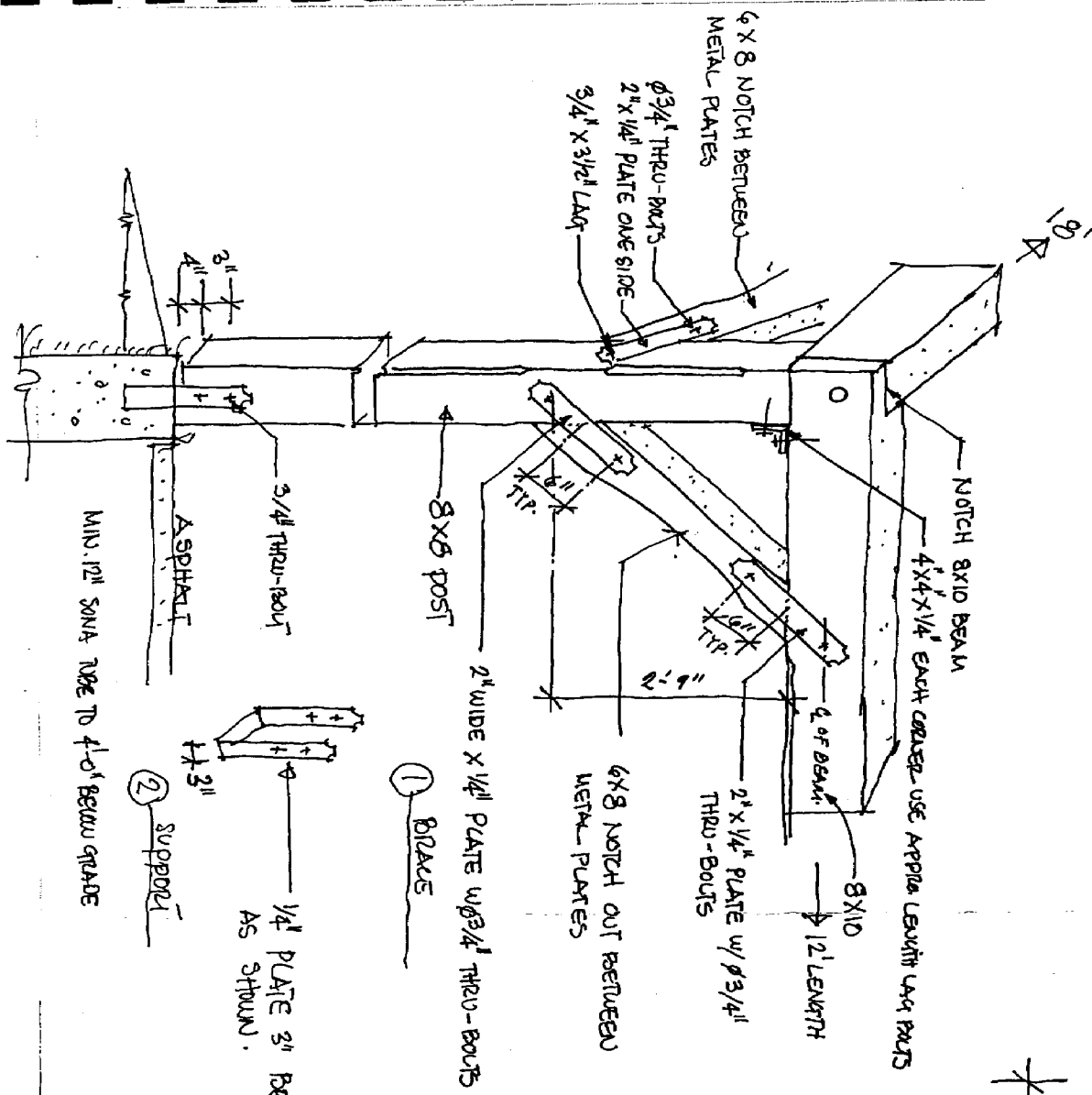


3/8" = 1'-0" SCHEMATIC ELEVATIONS

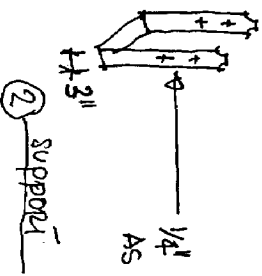
DATE:	10/11/01
SCALE:	3/8" = 1'-0"
BY:	DAVID B.
CHECKED BY:	DAVID B.
DATE:	10/11/01

NEW PICNIC SHELTER
DOVER, NEW HAMPSHIRE

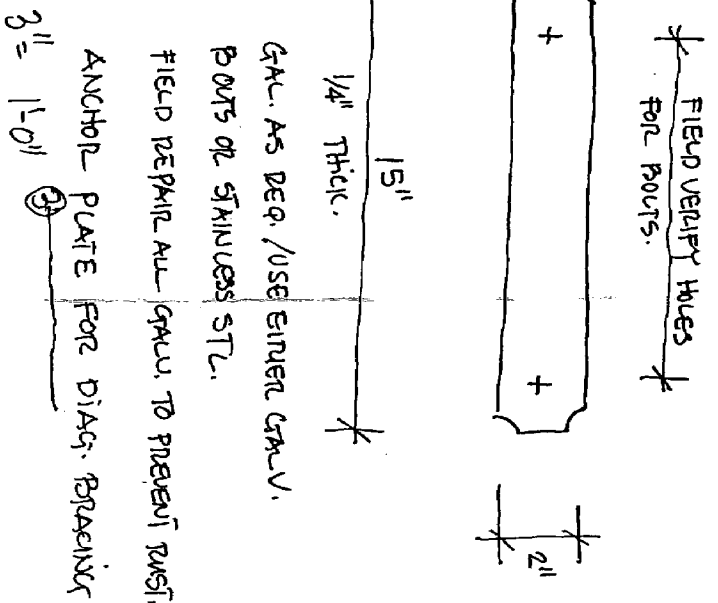
LASSEL ARCHITECTS
64 HIGHLAND AVENUE • SOUTH BERWICK, MAINE 03908 • 207.384.2049



MIN. 12" SAND TACK TO 4'-0" BELOW GRADE



① BRACE



FIELD REPAIR HOLES FOR BOLTS.

15"

1/4" THICK.

GRU. AS REQ. / USE SIMPER GRU. BOLTS OR STAINLESS STL.

FIELD REPAIR ALL GRU. TO PREVENT RUST.

ANCHOR PLATE FOR DIAG. BRACING

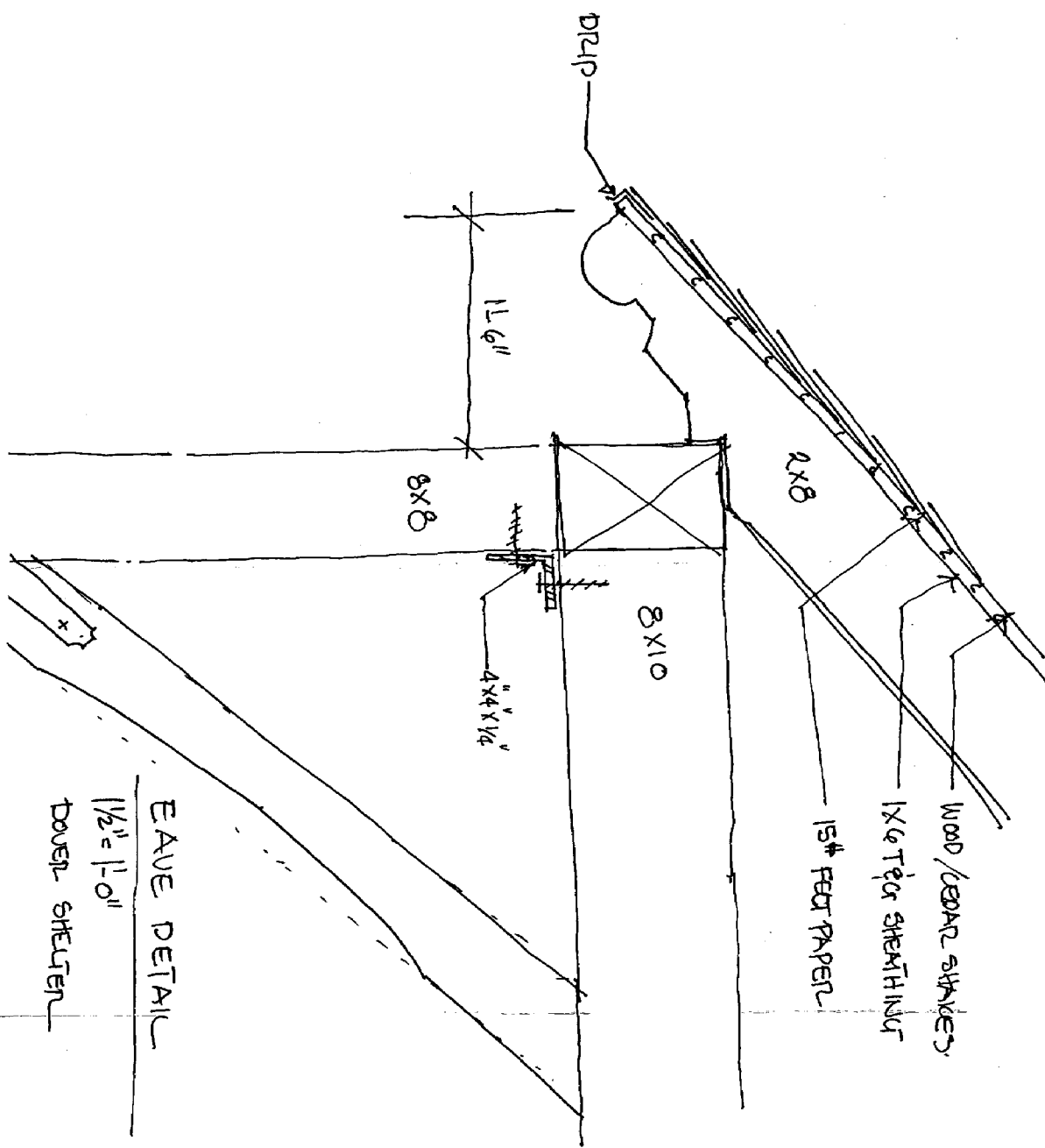
3" = 1'-0"

SCHEMATIC DETAILS

DATE	BY	SCALE
1/15/11	ASD	1/4" = 1'-0"

NEW PICNIC SHELTER
DOVER, NEW HAMPSHIRE

LASSEL ARCHITECTS
64 HIGHLAND AVENUE • SOUTH BERWICK, MAINE 03908 • 207.384.2049



EAVE DETAIL
 1/2" = 1'-0"
 DOVER SHELTER

SCHEMATIC DETAILS

NEW PICNIC SHELTER

DOVER, NEW HAMPSHIRE

LASSEL ARCHITECTS

64 HIGHLAND AVENUE • SOUTH BERWICK, MAINE 03908 • 207.384.2049

DATE:	SCALE:	PROJECT:
11/12	1/2" = 1'-0"	DOVER SHELTER
11/12		DOVER SHELTER

A-32

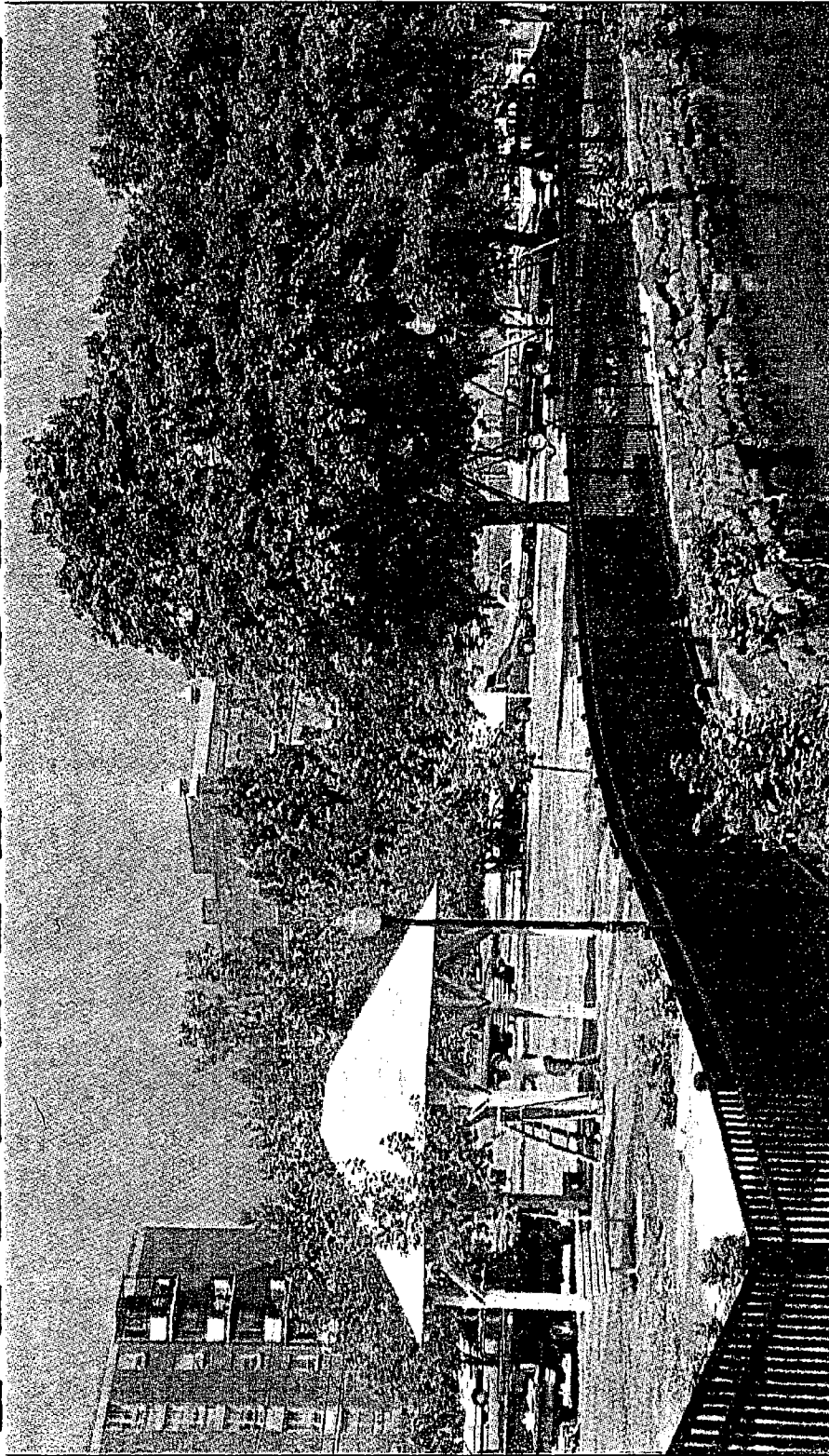
Photos







*Selected Press
Coverage*



Tracy Manforte Photo

FRANK HALE works on one of the gazebos at Henry Law Park in preparation for this weekend's Riverfest '95, a celebration of the Cochecho River and Dover history. The festival Saturday from 1 to 9 p.m. is a chance to show off the park's facelift, with paved walkway, Victorian lighting and gazebos.

Dover Celebrates Riverfest Saturday

BY TRACY MANFORTE
Union Leader Correspondent

DOVER — Residents and area business- are ready to celebrate the Cochecho River, revitalization of Henry Law Park and Dover history with Riverfest '95 Saturday.

Chamber of Commerce officials and organizers hope the event becomes an annual celebration, drawing attention to the park and its waterway.

"The city was built around the river, and we want to re-create interest," said Dana Lynch, committee chairman of Riverfest. "This city has a strong history with the river and we need to make better use of the river . . . One of the goals is to beautify and rejuvenate Henry Law Park,"

Saturday's festival, from 1 to 9 p.m., is a chance to show off part of the park's facelift — its paved walkway, Victorian lighting, gazebos and detailed landscaping. A pedestrian bridge connecting over a mile of paths throughout the city and a granite and brick courtyard have yet to be constructed.

Plans for the fest include a chicken barbecue, live entertainment, games at the outdoor pool, face painting and historical tours.

Family events running from 1 to 5 p.m. include:

- A martial arts demonstration;
- Storytelling;
- Historical walking tours;
- A guest appearance from Smoky the Bear;
- Twister, dunking booth and cake walk;
- Local history books and photographs on sale.

From 5 to 7 p.m. the fest offers a chicken bar-

becue prepared by the Dover Fire Department. Admission is \$6 for adults and \$3 for children under 12. Tickets will be available at the festival but are also available in advance at the chamber office, First NH Bank, Dover Fire Department or Dover Library.

During dinner, the Garrison Players will perform a Showtime Review on the Cantilever Outlook, located on the river's edge.

Riverfest joins with the Cochecho Arts Festival from 7 to 9 p.m. for a concert by Mid Life Crisis.

As the event's chief sponsor, First NH Bank has donated \$2,000 to the festival.

In addition, Public Service of New Hampshire recently made a \$5,000 donation to the Riverwalk project.

RIVERFEST

'95

**A CELEBRATION OF DOVER'S
HISTORIC WATERFRONT DISTRICT
&
FAMILY BARBECUE**

Henry Law Park, Dover
Saturday, July 15, 1995
Rain or Shine

Family Activities

2pm-5pm

Historical Walking Tours &
Exhibits • Storytelling
Martial Arts Demonstrations
Giant Twister • Pool Games
Face Painting • Dunking Booth
and more . . .

Family Barbecue

Sponsor: McIntosh Personnel

5pm-7pm

Presented by Dover Fire Dept.

Adults - \$6.00

Children under 12 - \$3.00

Showtune Review by

Garrison Players Showstoppers

Ethnic Heritage Tales

Riverfest '95/Cochecho Arts Festival Concert

Sponsor: GFS Manufacturing

7pm-9pm

Presentation of *Waterfront Redevelopment Showcase*

Music by *Mid-Life Crisis, Classic Rock*

Tickets for Barbecue Available at:

Dover Chamber of Commerce

First NH Bank

Dover Fire Department

Dover Library

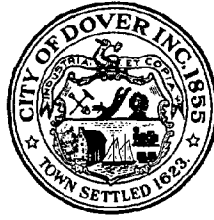
Riverfest Underwritten by





Interim Reports

STEVEN J. STANCEL
Director



288 Central Avenue
Dover, New Hampshire 03820-4169
TEL: (603) 743-6008
FAX: (603) 743-6097

City of Dover, New Hampshire

DEPARTMENT OF PLANNING AND COMMUNITY DEVELOPMENT

COCHECHO RIVERWALK INTERIM REPORT DECEMBER 31, 1994

Several tasks which were partially completed during the summer were finished this Fall. The electrical conduit system which will supply power to the lighting system has been completed. The fall planting consisted of trees supplied by Salmon Falls Nursery of South Berwick, Maine. Five park benches were installed by Conversion Products Inc. of Rochester, NH. Conversion Products specializes in the use of recycled products. The slats for the benches are made from recycled plastic milk containers. An eighteen by twenty foot cantilevered scenic overlook was constructed with volunteer labor and the materials were provided at cost by Star Lumber Company of Somersworth.

The Washington Street sidewalk improvements have been substantially completed. The new granite vertical curb, concrete sidewalk, underground electrical system and lights have been installed. Additional electrical work needs to be completed before the lights are operational. Plantings are scheduled to be done in the Spring to finish the project.

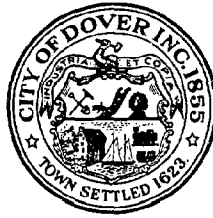
Fundraising has begun for Phase II of the riverwalk. GFS of Dover has donated \$1,000; First NH Bank has committed to donate \$7,500; and the Dover Lions Club has committed up to \$4,000 to the project.

Inscribed bricks have gone on sale for individuals and families which will become a permanent part of the proposed brick plaza. Fund raising is being conducted by a joint City and Dover Chamber of Commerce Riverwalk Committee.

Mike Lassell of Lassell Architects in South Berwick, Maine, has donated their services to design the picnic shelters. The design will incorporate Victorian features reminiscent of the period when textile manufacturing in the mills dominated downtown Dover. The former Clarostat Building, a prominent feature on the Riverwalk was a part of that era.

dean/rivupda2.sam

STEVEN J. STANCEL
Director



288 Central Avenue
Dover, New Hampshire 03820-4169
TEL: (603) 743-6008
FAX: (603) 743-6097

City of Dover, New Hampshire

DEPARTMENT OF PLANNING AND COMMUNITY DEVELOPMENT

Cochecho Riverwalk Interim Report March 31, 1995

Additional planning has taken place during the period from January 1, to March 31, 1995. A Landscaping subcommittee was formed in January to create a landscaping master plan for the entire Riverwalk, and develop an implementation plan for the Spring of 1995. The landscaping will concentrate on the area between the newly constructed sidewalk and the river. Work is scheduled to begin in April with planting complete by Memorial Day weekend.

The picnic shelters have been designed and construction drawings completed. The construction is scheduled to begin in April offsite with installation on-site planned for May.

The electricians are scheduled to install the lights along Henry Law Park in early April.

These are the remaining work tasks to complete the NH Coastal Grant along the Cochecho Riverwalk.

dean/intrep3.sam

US Department of Commerce
NOAA Coastal Services Center Library
2254 South Hobson Avenue
Charleston, SC 29405-2413

