



COMMONWEALTH OF PENNSYLVANIA
DEPARTMENT OF ENVIRONMENTAL RESOURCES

-Please note our new name-
DEPARTMENT OF ENVIRONMENTAL PROTECTION
D E P

Rachel Carson State Office Building
P.O. Box 8555
Harrisburg, PA 17105-8555
August 21, 1995

717-787-2529

Bureau of Land and Water Conservation

Neil K. Christerson, Program Specialist
Coastal Programs Division - OCRM
SSMC4 Room 11209 (N/ORM 3)
1305 East-West Highway
Silver Spring, MD 20910

RE: DEP File No. CZ1:A(94)

Dear Neil:

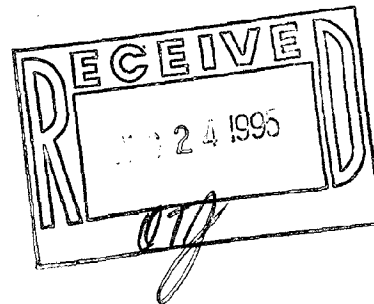
Enclosed with this letter are two copies of the final report for the Borough of Bristol River Park Improvements Project (94PD.03). This project was completed with funds provided by a financial assistance award in the Coastal Zone Management Program for the fiscal year 1994.

Sincerely,

Robert S. Edwards

Robert S. Edwards
Environmental Planner II
Division of Coastal Programs

Enclosure



FINAL REPORT
FOR
COASTAL ZONE MANAGEMENT GRANT
NO. CZ1:94.03 PD

IMPROVEMENTS TO
BRISTOL RIVERFRONT PARK

MARKET STREET
WHARF

PREPARED BY

DEPALLO DESIGN AND PLANNING
320 FAYETTE STREET
CONSHOHOCKEN, PA

AUGUST 1, 1995

Pennsylvania Coastal Zone Management Program

[INSERT TITLE/NAME OF PROJECT]

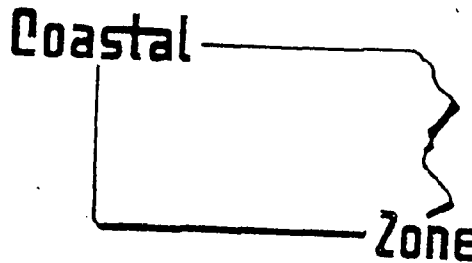
Bristol Riverfront Park - Market St. Wharf

[INSERT MONTH, YEAR OF PROJECT COMPLETION]

July, 1995

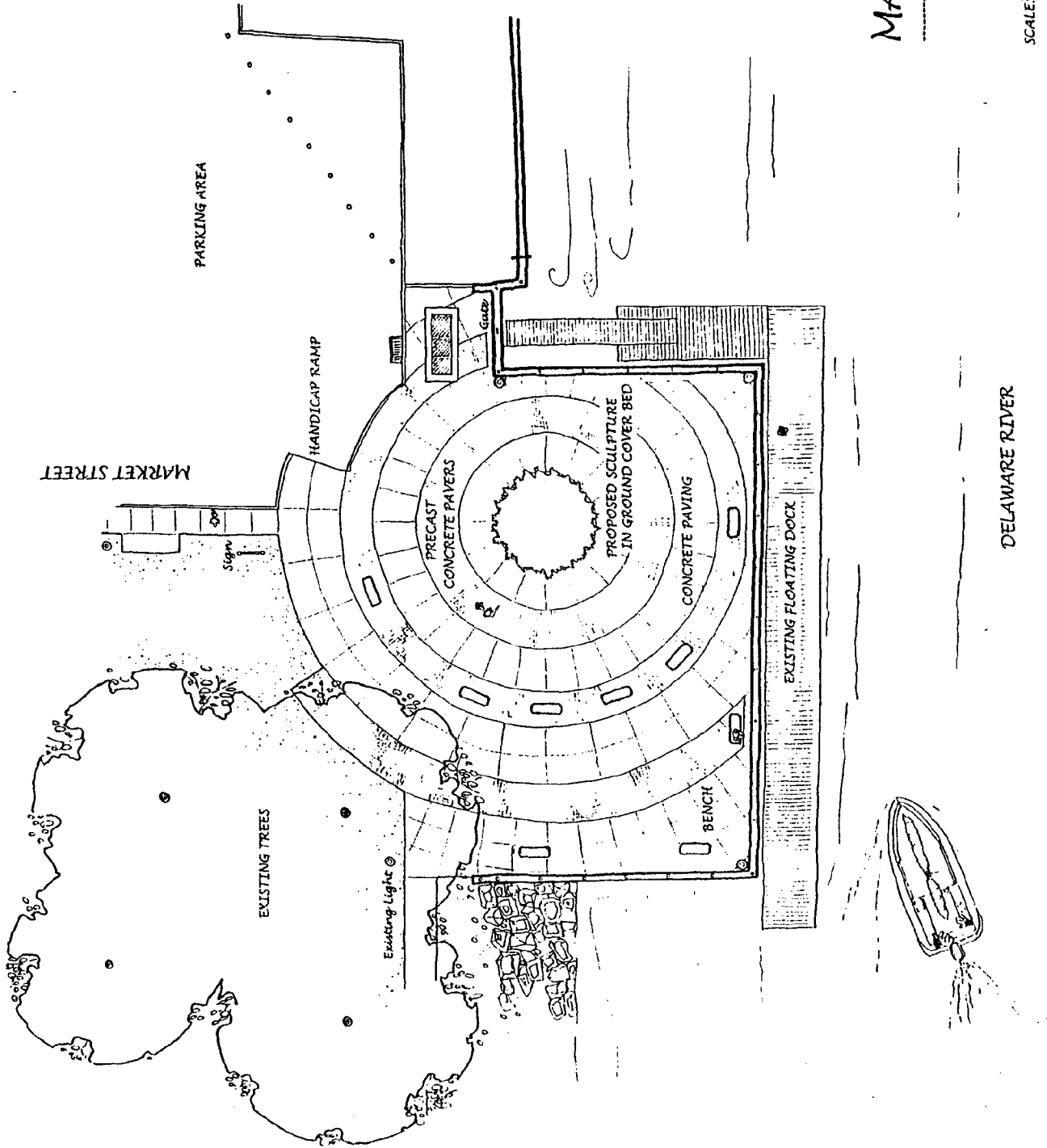
DER Grant/Contract No. CZ1: 94.03 PD
Grant Task No. 94 PD 03
ME No. 94167

A REPORT OF THE PENNSYLVANIA DEPARTMENT OF ENVIRONMENTAL RESOURCES
TO THE NATIONAL OCEANIC AND ATMOSPHERIC ADMINISTRATION PURSUANT TO
NOAA AWARD NO. NA470E0248



HT665 .875 P4 1995

Project was financed in part through a federal Coastal Zone Management Grant from the Pennsylvania Department of Environmental Resources, with funds provided by the NOAA. The views expressed herein are those of the author(s) and do not necessarily reflect the views of NOAA or any of its subagencies.



SKETCH PLAN

BRISTOL RIVERFRONT PARK

MARKET STREET WHARF

DEPALLO DESIGN AND PLANNING
 320 FAYETTE STREET
 CONSHOHOCKEN, PA 19428

SCALE: 1/8" = 1'-0"

DELAWARE RIVER

OCTOBER, 1994

PROJECT DESCRIPTION

Introduction

Bristol Riverfront Park is located Bristol Borough, Bucks County, PA adjacent to the Delaware River and the historic central business district of the Borough. The park, once a bustling river port, services the local and regional communities. Locally, the park receives daily, year-round, passive-recreational use. Regionally, the park attracts thousands of people for seasonal, organized events. In recent years the park has undergone a revitalization program through the joint efforts of the Borough, Grundy Foundation, Lion's Club and state funding agencies such as RIRA, LWCF and CZM.

This particular project is third in a series of CZM funded efforts. The improvements were for surface treatments of a recently reconstructed wharf. These included specialty paving, concrete paving, handicap access, site furnishings, permanent sign, and a sculpture.

The project was awarded \$35,000 from CZM for construction that was matched by the Grundy Foundation for \$30,000 and \$5,000 from the Borough. Additional monies for the project were supplied through a Community Development grant.

Project Coordination

The project was administered for the Borough by DePallo Design and Planning (DDP), consultants to the Borough. In addition to overseeing the project's construction, DDP had designed the project through Grundy Foundation funding, and secured necessary permits for the project. It was determined that the surface treatments to the wharf qualified under the original Army Corps permit for the construction of the wharf.

A major element in the design of the project was toward a sculptural element. DDP initiated and conducted a search to find an appropriate piece of sculpture for the project, but had little success in finding a piece that was already constructed and would fit design requirements. In light of this, requests for resumes and work samples for the selection of an artist to construct a piece that met design requirements were solicited. The sculptor, Ray King Studios, Ltd., was unanimously selected by members of the design team at DDP, and approved by Borough Council. Mr. King's work exemplified the qualities of verticality and light that was essential to the piece.

Two alternative schemes were presented to Borough Council for their review, and one scheme selected. The use of Mr. King in the project generated quite a bit of local press. Copies of articles are included in the report.

In overseeing the project, the consultant was required to conduct the bidding process and submit all required items to CZM and Community Development. The project was awarded to Road-Con, Inc. of West Chester, PA, the low bidder. Landscaping and several benches were deleted from the project to keep within the budget.

Construction Progress

Because Road-Con had several projects pending, the contractual procedure was completed in record time. Road-Con completed most of their work ahead of schedule. For this reason, there were few in-progress photos taken during the course of plaza construction. Scheduling of the entire project was close to the schedule submitted to CZM on 12/5/94 with the first quarterly report. A revision of this schedule is included with the final report to demonstrate how close the project came to completing the project within the projected schedule.

Changes in the construction included: installation of PVC pipe under the paving to the sculpture base as a precautionary measure for lighting. This cost was offset by the additional concrete poured under the light fixtures and the elimination of the curb on the outer part of the ramp. The ramp had been poured as a monolith, and an actual curb deleted for 8 feet. The Vietnam Veteran's memorial plaques that had been set in the demolished wall around the removed flagpole were set in the concrete paving.

The CMU wall was changed to poured concrete at the pre-construction meeting. Because there was so much concrete already in the project, it was easier for the contractor to do and provided a stronger wall. The precast pavers had initially been set in the wrong pattern. Because they were set in stone dust with no cement added (per pre-construction meeting), it was easy for the contractor to remove and replace properly.

During the course of construction the Lion's Club approached the Borough to have the removed flagpole and plaques replaced. Although the Lions had been contracted prior to the bid process, no decision was returned about the removal of this item that had been purchased and installed by the Lion's. Because some money remained in the project, the 40' pole was able to be reinstalled about 25 feet away from the project area. The Lions will assume responsibility for the construction of a wall containing the plaques around the flagpole.

Upon completion of the plaza, Borough Council expressed dissatisfaction with the quality of some work by the Contractor. This included the curb around the sculpture, uneven precast pavers, and stress cracks in the paving. All issues were resolved by the July 4 holiday, including the removal of the curbing and replacement with precast pavers, at no extra cost to the Borough.

On June 13 the sculpture was installed by Ray King on the site. Most of the piece was assembled in 12" sections in the studio, and then these were assembled on the site. The Borough electrician, as specified, was available to make the lighting connection to the sculpture.

As-built drawings of the project are included with this report as required.

Budget

Cost breakdowns for the project are as follows, and can be compared with the contract budget (Exhibit C) that is included at the end of this report:

Project Work Elements*

Administration Expenses & Arch. Fees	\$ 6,468.30
Construction of Plaza: Road-Con, Inc.	49,979.00
Ray King Studios, Ltd.	15,000.00
R.F. Butterworth, Inc.	1,500.00
B. Bailey, Bor. Elec.	<u>152.70</u>
Total	\$ 73,100.00

Funding Source

CZM Funds	\$ 35,000.00
Grundy Foundation	30,000.00
Bristol Borough	5,000.00
Community Development (additional funds)	<u>3,100.00</u>
Total	\$ 73,100.00

Object Categories

Architectural consultant	\$ 6,468.30
Construction contractor(s)	66,631.70
Total	\$ 73,100.00

* Indicates total payments made to each CZM subcontractor. Includes payments pending from final CZM invoice no. 7.

Summary

This project has enjoyed considerable success throughout the course of its development. The design phase saw a tremendously successful collaboration between landscape architect and sculptor to arrive at a unique piece that is perfectly sited. The piece represents a beacon from the water and symbolizes a torch of light commemorating those Bristol veterans who died in Vietnam. This successful collaboration would not have occurred without the cooperation and approval of CZM to consider the artist and his work.

During the course of construction many people commented on the plaza and how wonderful the riverfront park is looking. A group of older men who call themselves the Old Geezer Club (complete with sign), kept watch over the curing concrete to make sure no one left their mark. Borough Council is now planning the installation of a plaque noting the name of sculptural piece (as yet unknown), artist and members of council. This speaks to Council's satisfaction with the project.

Finally, the riverfront park was submitted to the local chapter of the American Society of Landscape Architects and received a Certificate of Merit for the ongoing work that has occurred. A copy of the plan submitted for the award is attached to this report. CZM has been involved in the funding of three projects associated with the award.

The Borough now looks forward to similar improvement of the existing wharf at the end of the restored, historic pavilion. Public restrooms are also a much needed facility for this well-used park.

PROJECT COMPLETION SCHEDULE

Bristol Riverfront Park Improvements Market Street Wharf CZ1:94:03 PD

December 5, 1994

	<u>Date to be Initiated</u>	<i>Date of Actual Initiation</i>	<u>Date to be Completed</u>	<i>Date of Actual Completion</i>
1. Permit Requirements	8/1/94	<i>8/1/94</i>	10/1/94	<i>11/29/94</i>
2. Wharf Plaza:				
Final Design	8/1/94	<i>8/1/94</i>	11/1/94	<i>10/5/94</i>
Construction Documentation	11/15/94	<i>10/15/94</i>	12/31/94	<i>3/9/94</i>
Bid Package Issue			2/1/95	<i>3/9/95</i>
Construction/Construction Admin.	3/15/95	<i>4/24/95</i>	6/30/95	<i>7/1/95</i>
3. Sculptural Element:				
Design	9/1/94	<i>1/24/95</i>	1/31/95	<i>3/8/95</i>
Construction and Installation	2/1/95	<i>3/8/95</i>	6/30/95	<i>6/15/95</i>
4. Draft Final Report	6/15/95	<i>6/5/95</i>	8/1/95	<i>7/14/95</i>
5. Final Project Report	8/15/95	<i>7/28/95</i>	9/1/95	<i>8/1/94</i>

Schedule Notes

The above schedule is that submitted at the start of the project. Actual dates have been inserted in italics after the proposed dates. The primary cause for lateness in items was the sculptural issue and the time required to obtain sole source status, Borough approval and funding for the piece. In spite of this issue, the project was completed ahead of the required schedule.

EXHIBIT C:
BUDGET INFORMATION
Bristol Borough
Riverfront Park Improvements

PROJECT WORK ELEMENTS

Administrative expenses and Architectural/engineering fees	\$ 6,000
Construction	<u>64,000</u>
	\$ 70,000

FUNDING SOURCE

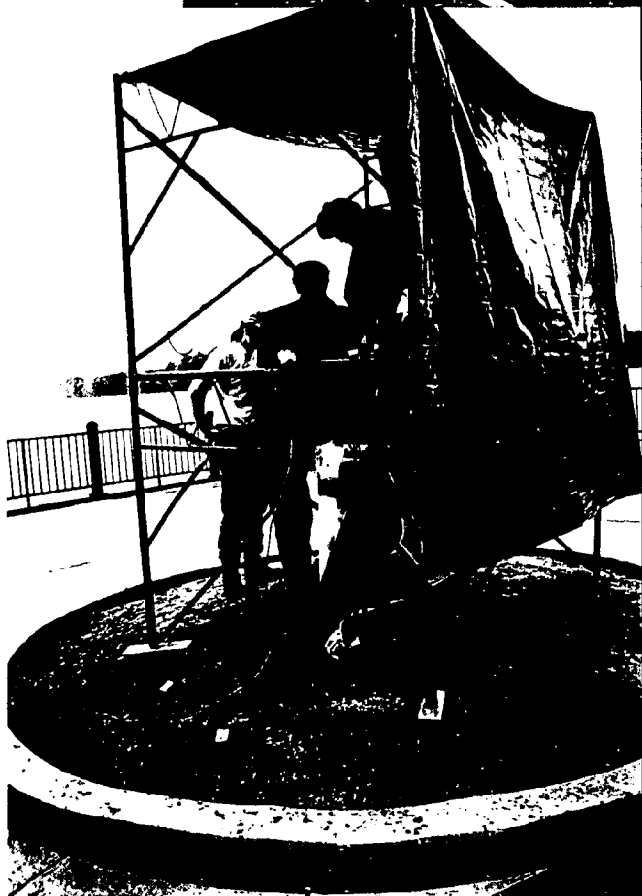
CZM funds	\$ 35,000
Local funds	<u>35,000</u>
	\$ 70,000

OBJECT CATEGORIES

Engineering consultant	\$ 6,000
Construction contractor	<u>64,000</u>
	\$ 70,000

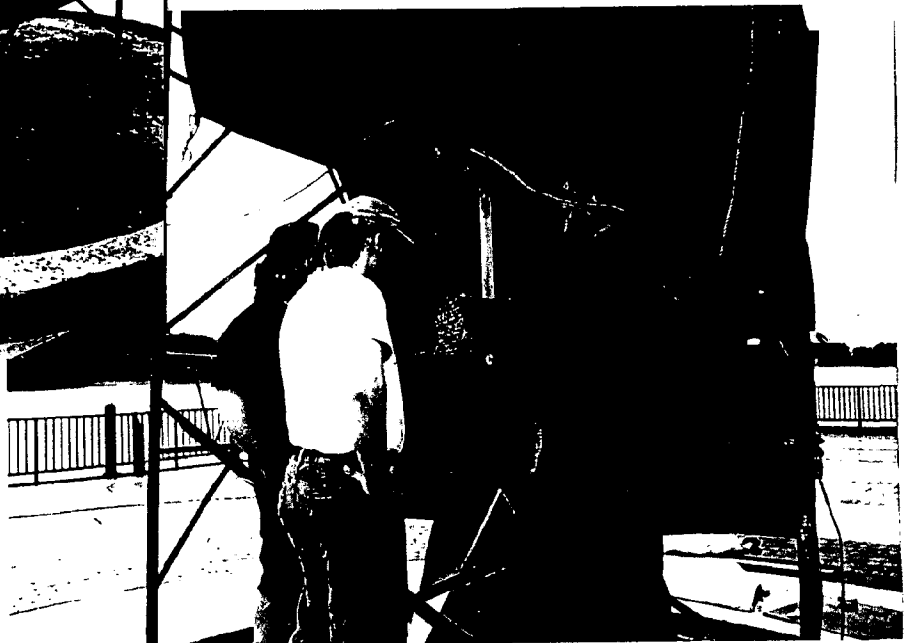


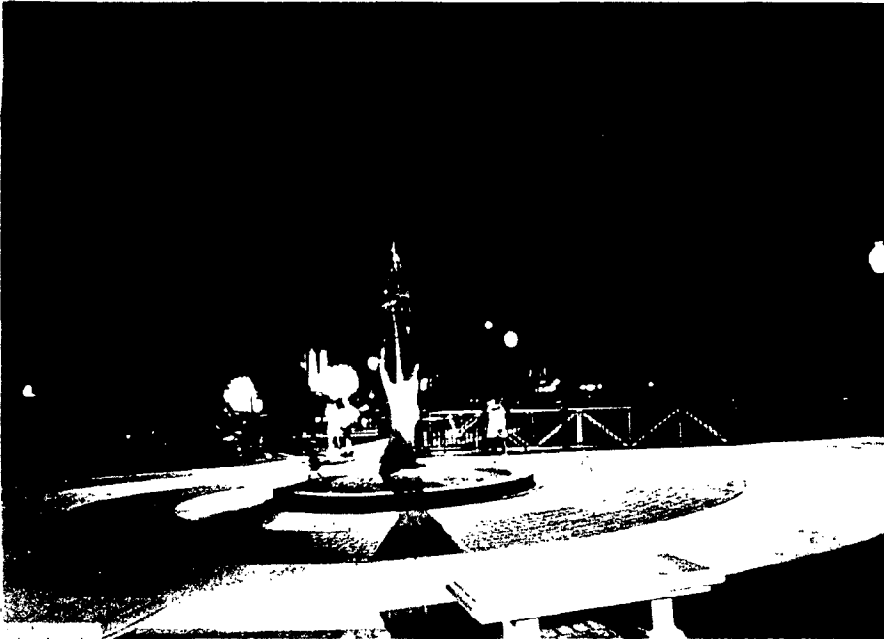
BEFORE



REPLACED CURBING

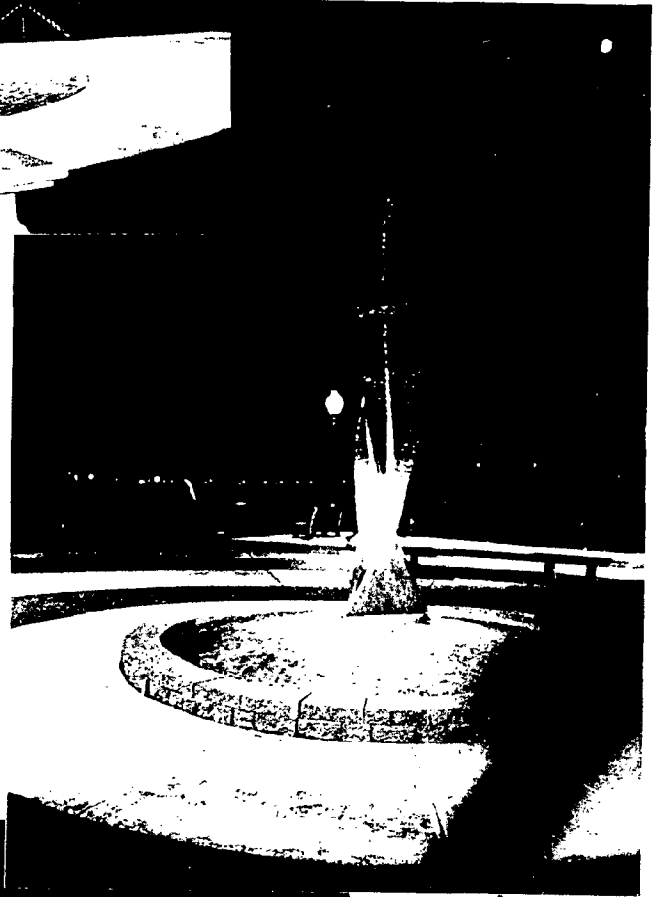
DURING





BENCH

AFTER



NEW CURB

BOAT
AT
DOCK



Bristol Borough Council proceeds with caution into aesthetics

Two grants will pay for a waterfront sculpture. A model first, please.

By Russell Gold
INQUIRER CORRESPONDENT

BRISTOL BOROUGH — Ever so cautiously, the Bristol Borough Council members are testing the temperamental waters of the art world in their search for a sculpture to serve as the focal point of a redesigned Market Street wharf.

In a vote this month, the council decided to commission a model from a Philadelphia artist, but the question of what the sculpture should look like is still under debate.

What's turned the eight council members, who are more accustomed to discussing financing ambulance squads and levying taxes, into art critics is a state grant for the improvement of the Delaware River waterfront.

Bristol Borough has received \$35,000 from the state Department of Environmental Resources in a coastal zone management grant for improvements to the wharf area. A matching \$35,000 grant is coming from the Grundy Foundation.

Instead of plunging headlong into the

swirling currents of modern art, the council agreed this month to use grant money to pay for a model so they could see what a proposed sculpture will look like.

The overall plan for the wharf area was prepared by the borough's planning consultant, Kathy Kelly of DePallo Design & Planning in Conshohocken. Her idea includes covering the wharf with cement in a pattern of concentric circles. A sculpture, on a slight rise, is planned for the center.

But the question, remains: What kind of

sculpture?

Kelly searched the Philadelphia area for a sculptor and found Ray King, a Philadelphian who works mostly in glass and metal. In a slide presentation in October, he showed the council a contemporary body of work. King was recently selected to build four 40-foot columns made of granite, stainless steel and laminated glass at the southern end of the Avenue of the Arts in Philadelphia.

His idea for Bristol Borough is more

See **SCULPTURE** on BC5

Council hedges aesthetic bets

SCULPTURE from BC1

modest. At the October meeting, King showed a rough sketch of an "eternal flame" — a spiraling, glass-encased 12-foot column of light that ends in a point.

The council was impressed, but not overwhelmed.

"I thought it looked like a rocket ship," said council member Charles Quici, sounding dubious. He said he had in mind a more classical, symmetrical design with, maybe, a sphere on top.

At a council meeting earlier this month, the council voted unanimously to use \$1,500 of the state money to have King develop a modified model. If the new design meets with the council's approval, then King will get additional money to complete the sculpture.

Phila. Inquirer 11/27/94

... shooting shook the
own and, especially,
merchants who were
with the victim.
... illing occurred at As-
:alth Care Center and
ost Annex, 400 Mill
where Berger was
at his family business.
pkeeper was shot three
ith a .32 caliber hand-
ng a struggle with Gib-
court ruled.
... ing to police and the
see page 20



Bob Castell

"Vest-A-Cop" Committee

Bristol Borough Council President Joe Coffman has appointed a "Vest-a-Cop" Committee in order to raise money for bullet-proof vests for 14 police officers. The members of the committee are (from left): State Representative Tom Corrigan, Mary Gary Tosti, Coffman, officer Robert Lebo, Chief Frank Peranteau, and retired officer Allen Lebo. Local banker Terry Redinger is not photographed. All money left over will be spent on future vest purchases. To contribute, send checks to Bristol Borough Vest-a-Cop, c/o Joseph Coffman, 721 Garden Street, Bristol, PA 19007. Make checks payable to "Bristol Borough Vest-a-Cop."

ders
space
r sports
gerous

... employees came and
e ramps away which
ad spent days to
t.

... more, they have been
away from that
und and other areas
they skateboard,
ng the Mill Run
ment Community
lot and behind First
Bank on Radcliffe

... t, the "L" word, was
on borough council
r being hesitant in
g the youths to
ard on borough
. Council vowed to
a meeting for the
ders with Recreation
Lou Persichetti Jr. to
ossible solutions.
man Charles Caucci
ee page 20

Council okays flame sculpture to enhance the Bristol Wharf

by David Jwanier

Bristol Borough Council found itself with two fascinating choices last week when artist Ray King presented proposals for the \$15,000 art work slated for unveiling this summer at the Mill Street Wharf.

The one selected by council was a 12-foot high flame made out of hundreds of pieces of one-half-inch-thick float glass. According to the sculptor, who has been commissioned for work on the entryway to the new Avenue of the Arts in Philadelphia (currently Broad Street), the 1,000-pound flame

will refract sunlight during the day and artificial light at night.

When completed, the artwork will grace the wharf in the area behind the Bristol Riverside Theatre and CoreStates Bank. Coastal Zone Management grant money will be used to pay for the piece.

The second choice, which garnered a lot of support from council as well, was a spherical shape called a dodecahedron. Inside the five-foot high sculpture was a star that would shoot off colored light by night or day. It would've also had a five-foot high base.

In the end, Mayor Gary Tosti

broke a tie and selected the flame. The dodecahedron appeared to capture council's imagination as a more dynamic artwork, but it was also deemed somewhat less durable than the flame. To replace a single pane of holographic glass for the dodecahedron was estimated at \$200.

The flame, according to King, will serve as a sort of "lighthouse" for the Bristol Wharf, a "welcoming beacon to the port." In addition, a veterans memorial may also be worked into the piece of art.

Merchant's plight a sign of times Borough codes forced removal of billboards

by David Jwanier

A Sixth Avenue businesswoman said the fragile state of her shop is the sign of the times in Bristol Borough.

Her problem?

Operating a handcrafted home decorations specialty store on a side street with little traffic is a tough road to hoe.

for small businesses such as hers to succeed.

"I've talked to other people who said they wanted to start businesses in Bristol Borough but decided against it because they didn't feel they would get cooperation from Bristol Borough," she said. "I feel that if they would accommodate our

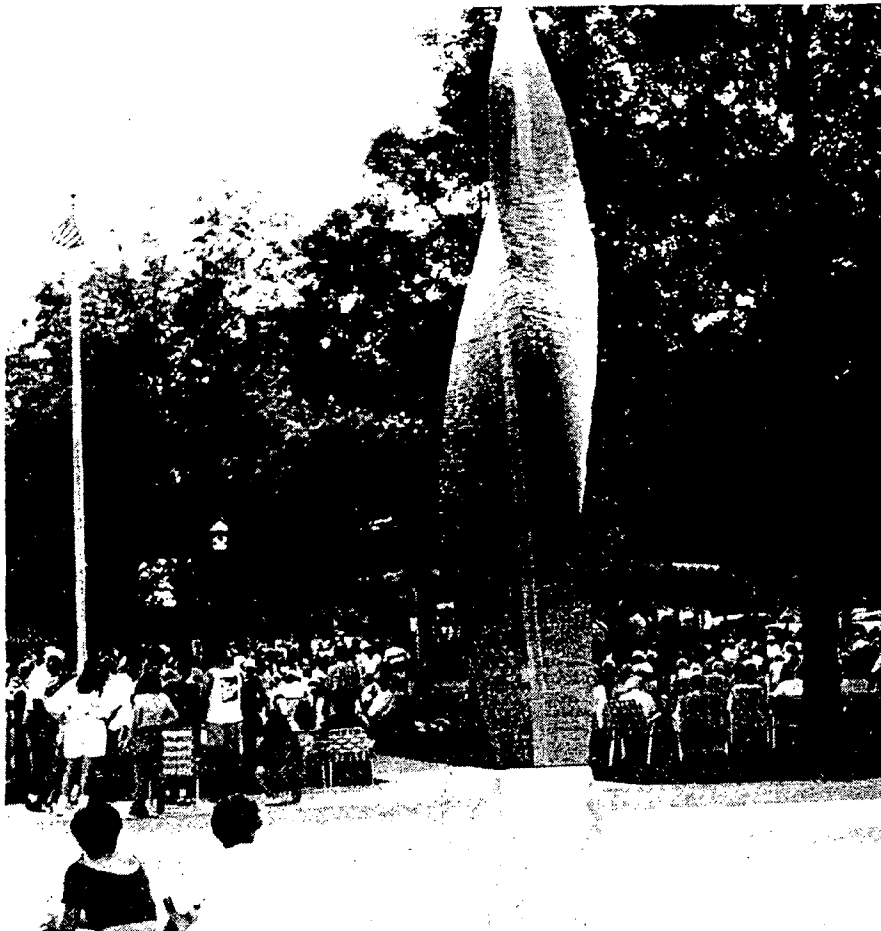


BRISTOL PILOT
3/16/95



Bob Castelli

(Left) Millie Hart, assistant branch manager of CoreStates Bank, Route 413 and New Falls Road in Levittown, accepts a \$300 donation from Bristol Pilot editor David Jwanier (right) for the Larry Morris Fund. The check was the result of a successful subscription drive earlier this year during which the Pilot pledged money to the fund for each new subscriber. Larry Morris is also photographed.



Don Aikens

A welcoming flame

This new sculpture, a 14-foot flame that refracts light, was unveiled recently in Bristol Lions Park, Bristol Borough. The artwork was designed by Philadelphia artist Ray King at a cost of \$15,000, which town council received from the state.

Call for blood in Bucks County

Every day Americans need blood; and every day America needs blood donors, even on the Fourth of July. To help boost local blood supplies that will be needed over the July Fourth Holiday Weekend and the first few days afterwards, the American Red Cross urges you to do what you can for Americans in need by donating blood this week.

said Kathleen C. Glackin, principal officer of the Penn-Jersey Region of American Red Cross Blood Services.

"Of particular concern are platelets, which only last five days. This blood component is important in the care of cancer patients," she said. "Red Cross will be able to respond to medical emergencies during and immediately after the holiday."

donor identification card, which usually lists their last donation date, and their social security number with them to the drive.

In order to donate, you will need to know the name, purpose or category (for example, antibiotics) of any prescription medication you are currently taking or have taken in the last month. Donors should bring a list of those medications with them to the

near death, but he pulled through and his condition has improved steadily.

Diane said Larry needs

BRISTOL PILOT



Fic

Annual C

M

We appreciate

Bring the family Officers and Staff to be free souvenir hours at our Pc July 3rd will be 9

Our customers are

During the time been reopened tomers and frier vice, quality finace. In add year round. Visit Thursday 9-6; Fr

Come visit with our appreciation

Fic and Loan

Serving 201 POND

S I G N A W A R D S

MERIT AWARD

Bristol Borough's Lion's Park

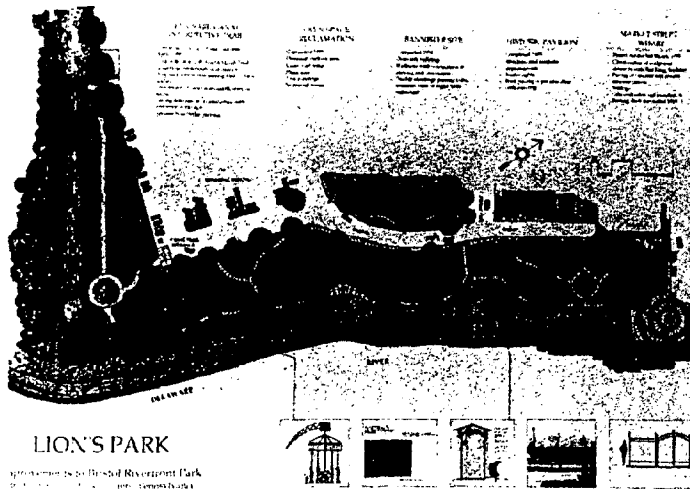
Category: Landscape Architectural Design

"Solid design and great improvement," commented the jury on this restoration and redesign project for a 10-acre, Delaware Riverfront Park.

DePallo Design & Planning of Conshohocken, PA developed a design that expanded the overall size of and brought unity to this much deteriorated park. Restoring an historic pavilion and the Market Street Wharf as well as redesigning the park's reclaimed open space were all involved in the process.

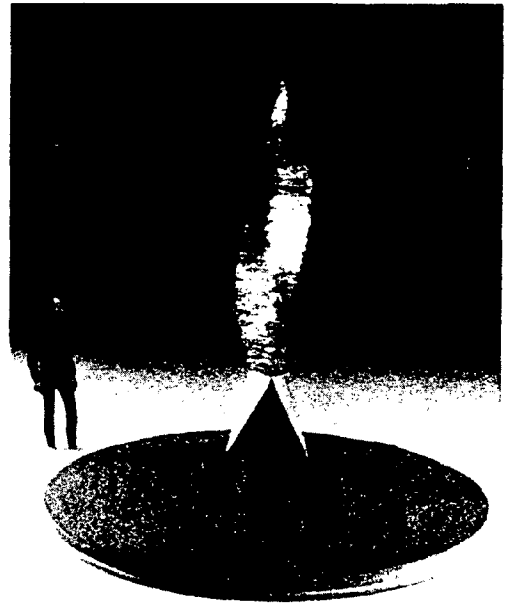
"The right thing to do and well executed," the jury further commented. "Can't wait for its completion." The completion date for the project is set for 1996.

The park is currently used in the evenings for passive recreation and concerts, and in the summer for large-scale events.



LION'S PARK

Improvements to Bristol Riverfront Park
 Existing and proposed improvements plan.
 The overall size of the park has expanded and became more unified.



Model of proposed sculpture by Ray King. Glass "flame" is lit from within and is representative of a beacon from the water, a memorial to the Vietnam Veterans of Bristol who died.

Bannister site with open space reclamation beyond.



"The right thing to do and well executed...can't wait for its completion."

FINAL REPORT
FOR
COASTAL ZONE MANAGEMENT GRANT
NO. CZ1:94.03 PD

IMPROVEMENTS TO
BRISTOL RIVERFRONT PARK

MARKET STREET
WHARF

PREPARED BY

DEPALLO DESIGN AND PLANNING
320 FAYETTE STREET
CONSHOHOCKEN, PA

AUGUST 1, 1995

Pennsylvania Coastal Zone Management Program

[INSERT TITLE/NAME OF PROJECT]

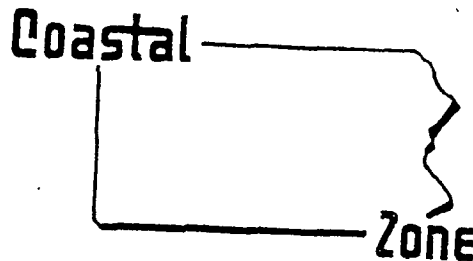
Bristol Riverfront Park — Market St. Wharf

[INSERT MONTH, YEAR OF PROJECT COMPLETION]

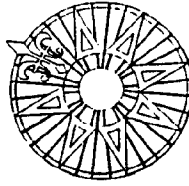
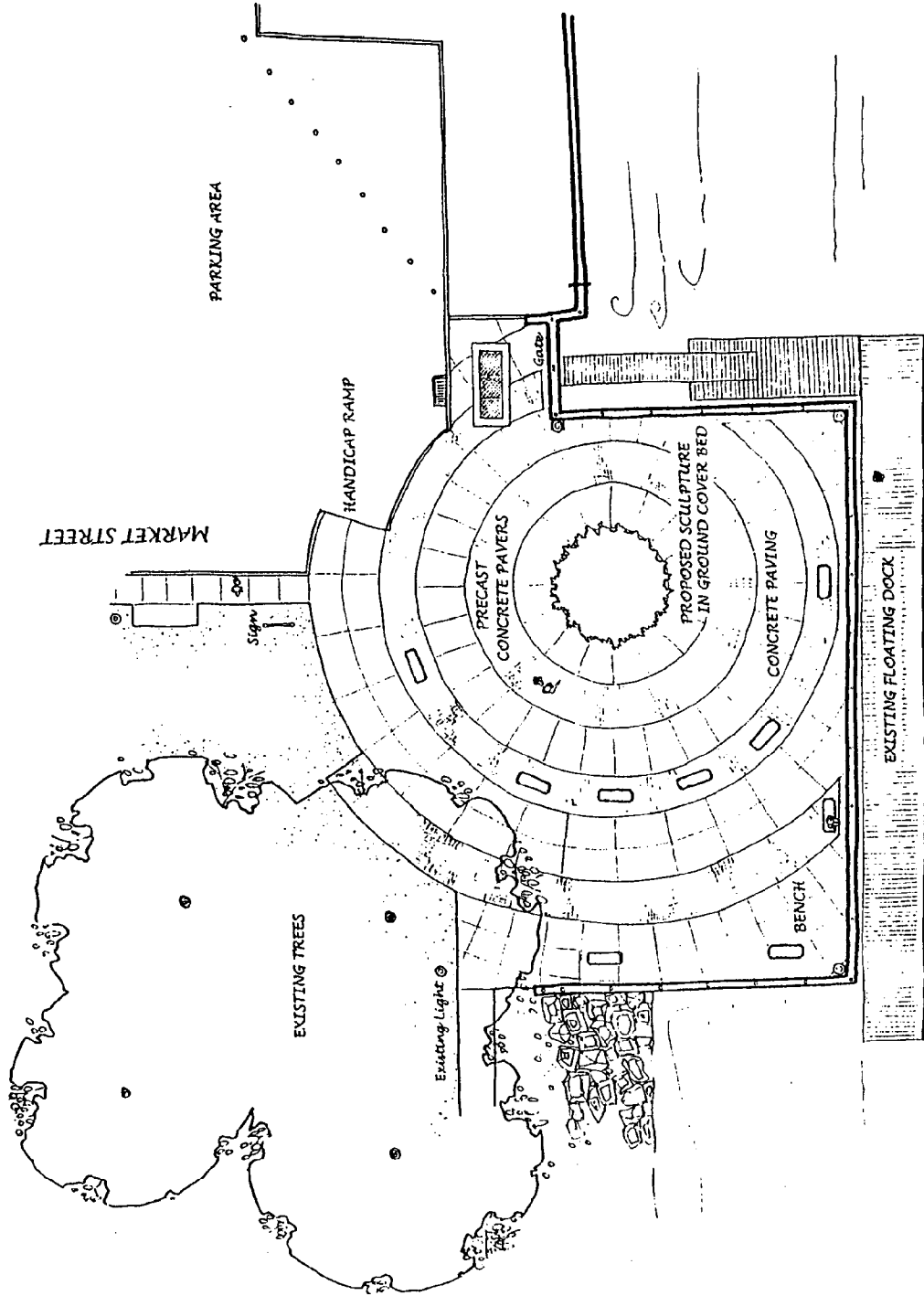
July, 1995

DER Grant/Contract No. CZ1: 94.03 PD
Grant Task No. 94 PD 03
ME No. 94167

A REPORT OF THE PENNSYLVANIA DEPARTMENT OF ENVIRONMENTAL RESOURCES
TO THE NATIONAL OCEANIC AND ATMOSPHERIC ADMINISTRATION PURSUANT TO
NOAA AWARD NO. NA470Z-0248



Project was financed in part through a federal Coastal Zone Management Grant from the Pennsylvania Department of Environmental Resources, with funds provided by the NOAA. The views expressed herein are those of the author(s) and do not necessarily reflect the views of NOAA or any of its subagencies.



SKETCH PLAN

BRISTOL RIVERFRONT PARK

MARKET STREET WHARF

DEPALLO DESIGN AND PLANNING
 320 FAYETTE STREET
 CONSHOHOCKEN, PA 19028

SCALE: 1/8" = 1'-0"

DELAWARE RIVER

OCTOBER, 1994

PROJECT DESCRIPTION

Introduction

Bristol Riverfront Park is located Bristol Borough, Bucks County, PA adjacent to the Delaware River and the historic central business district of the Borough. The park, once a bustling river port, services the local and regional communities. Locally, the park receives daily, year-round, passive-recreational use. Regionally, the park attracts thousands of people for seasonal, organized events. In recent years the park has undergone a revitalization program through the joint efforts of the Borough, Grundy Foundation, Lion's Club and state funding agencies such as RIRA, LWCF and CZM.

This particular project is third in a series of CZM funded efforts. The improvements were for surface treatments of a recently reconstructed wharf. These included specialty paving, concrete paving, handicap access, site furnishings, permanent sign, and a sculpture.

The project was awarded \$35,000 from CZM for construction that was matched by the Grundy Foundation for \$30,000 and \$5,000 from the Borough. Additional monies for the project were supplied through a Community Development grant.

Project Coordination

The project was administered for the Borough by DePallo Design and Planning (DDP), consultants to the Borough. In addition to overseeing the project's construction, DDP had designed the project through Grundy Foundation funding, and secured necessary permits for the project. It was determined that the surface treatments to the wharf qualified under the original Army Corps permit for the construction of the wharf.

A major element in the design of the project was toward a sculptural element. DDP initiated and conducted a search to find an appropriate piece of sculpture for the project, but had little success in finding a piece that was already constructed and would fit design requirements. In light of this, requests for resumes and work samples for the selection of an artist to construct a piece that met design requirements were solicited. The sculptor, Ray King Studios, Ltd., was unanimously selected by members of the design team at DDP, and approved by Borough Council. Mr. King's work exemplified the qualities of verticality and light that was essential to the piece.

Two alternative schemes were presented to Borough Council for their review, and one scheme selected. The use of Mr. King in the project generated quite a bit of local press. Copies of articles are included in the report.

In overseeing the project, the consultant was required to conduct the bidding process and submit all required items to CZM and Community Development. The project was awarded to Road-Con, Inc. of West Chester, PA, the low bidder. Landscaping and several benches were deleted from the project to keep within the budget.

Construction Progress

Because Road-Con had several projects pending, the contractual procedure was completed in record time. Road-Con completed most of their work ahead of schedule. For this reason, there were few in-progress photos taken during the course of plaza construction. Scheduling of the entire project was close to the schedule submitted to CZM on 12/5/94 with the first quarterly report. A revision of this schedule is included with the final report to demonstrate how close the project came to completing the project within the projected schedule.

Changes in the construction included: installation of PVC pipe under the paving to the sculpture base as a precautionary measure for lighting. This cost was offset by the additional concrete poured under the light fixtures and the elimination of the curb on the outer part of the ramp. The ramp had been poured as a monolith, and an actual curb deleted for 8 feet. The Vietnam Veteran's memorial plaques that had been set in the demolished wall around the removed flagpole were set in the concrete paving.

The CMU wall was changed to poured concrete at the pre-construction meeting. Because there was so much concrete already in the project, it was easier for the contractor to do and provided a stronger wall. The precast pavers had initially been set in the wrong pattern. Because they were set in stone dust with no cement added (per pre-construction meeting), it was easy for the contractor to remove and replace properly.

During the course of construction the Lion's Club approached the Borough to have the removed flagpole and plaques replaced. Although the Lions had been contracted prior to the bid process, no decision was returned about the removal of this item that had been purchased and installed by the Lion's. Because some money remained in the project, the 40' pole was able to be reinstalled about 25 feet away from the project area. The Lions will assume responsibility for the construction of a wall containing the plaques around the flagpole.

Upon completion of the plaza, Borough Council expressed dissatisfaction with the quality of some work by the Contractor. This included the curb around the sculpture, uneven precast pavers, and stress cracks in the paving. All issues were resolved by the July 4 holiday, including the removal of the curbing and replacement with precast pavers, at no extra cost to the Borough.

On June 13 the sculpture was installed by Ray King on the site. Most of the piece was assembled in 12" sections in the studio, and then these were assembled on the site. The Borough electrician, as specified, was available to make the lighting connection to the sculpture.

As-built drawings of the project are included with this report as required.

Budget

Cost breakdowns for the project are as follows, and can be compared with the contract budget (Exhibit C) that is included at the end of this report:

Project Work Elements*

Administration Expenses & Arch. Fees	\$ 6,468.30
Construction of Plaza: Road-Con, Inc.	49,979.00
Ray King Studios, Ltd.	15,000.00
R.F. Butterworth, Inc.	1,500.00
B. Bailey, Bor. Elec.	<u>152.70</u>
 Total	 \$ 73,100.00

Funding Source

CZM Funds	\$ 35,000.00
Grundy Foundation	30,000.00
Bristol Borough	5,000.00
Community Development (additional funds)	<u>3,100.00</u>
 Total	 \$ 73,100.00

Object Categories

Architectural consultant	\$ 6,468.30
Construction contractor(s)	66,631.70
 Total	 \$ 73,100.00

* Indicates total payments made to each CZM subcontractor. Includes payments pending from final CZM invoice no. 7.

Summary

This project has enjoyed considerable success throughout the course of its development. The design phase saw a tremendously successful collaboration between landscape architect and sculptor to arrive at a unique piece that is perfectly sited. The piece represents a beacon from the water and symbolizes a torch of light commemorating those Bristol veterans who died in Vietnam. This successful collaboration would not have occurred without the cooperation and approval of CZM to consider the artist and his work.

During the course of construction many people commented on the plaza and how wonderful the riverfront park is looking. A group of older men who call themselves the Old Geezer Club (complete with sign), kept watch over the curing concrete to make sure no one left their mark. Borough Council is now planning the installation of a plaque noting the name of sculptural piece (as yet unknown), artist and members of council. This speaks to Council's satisfaction with the project.

Finally, the riverfront park was submitted to the local chapter of the American Society of Landscape Architects and received a Certificate of Merit for the ongoing work that has occurred. A copy of the plan submitted for the award is attached to this report. CZM has been involved in the funding of three projects associated with the award.

The Borough now looks forward to similar improvement of the existing wharf at the end of the restored, historic pavilion. Public restrooms are also a much needed facility for this well-used park.

PROJECT COMPLETION SCHEDULE

Bristol Riverfront Park Improvements Market Street Wharf CZ1:94:03 PD

December 5, 1994

	<u>Date to be Initiated</u>	<i>Date of Actual Initiation</i>	<u>Date to be Completed</u>	<i>Date of Actual Completion</i>
1. Permit Requirements	8/1/94	<i>8/1/94</i>	10/1/94	<i>11/29/94</i>
2. Wharf Plaza:				
Final Design	8/1/94	<i>8/1/94</i>	11/1/94	<i>10/5/94</i>
Construction Documentation	11/15/94	<i>10/15/94</i>	12/31/94	<i>3/9/94</i>
Bid Package Issue			2/1/95	<i>3/9/95</i>
Construction/Construction Admin.	3/15/95	<i>4/24/95</i>	6/30/95	<i>7/1/95</i>
3. Sculptural Element:				
Design	9/1/94	<i>1/24/95</i>	1/31/95	<i>3/8/95</i>
Construction and Installation	2/1/95	<i>3/8/95</i>	6/30/95	<i>6/15/95</i>
4. Draft Final Report	6/15/95	<i>6/5/95</i>	8/1/95	<i>7/14/95</i>
5. Final Project Report	8/15/95	<i>7/28/95</i>	9/1/95	<i>8/1/94</i>

Schedule Notes

The above schedule is that submitted at the start of the project. Actual dates have been inserted in italics after the proposed dates. The primary cause for lateness in items was the sculptural issue and the time required to obtain sole source status, Borough approval and funding for the piece. In spite of this issue, the project was completed ahead of the required schedule.

EXHIBIT C:
BUDGET INFORMATION
Bristol Borough
Riverfront Park Improvements

PROJECT WORK ELEMENTS

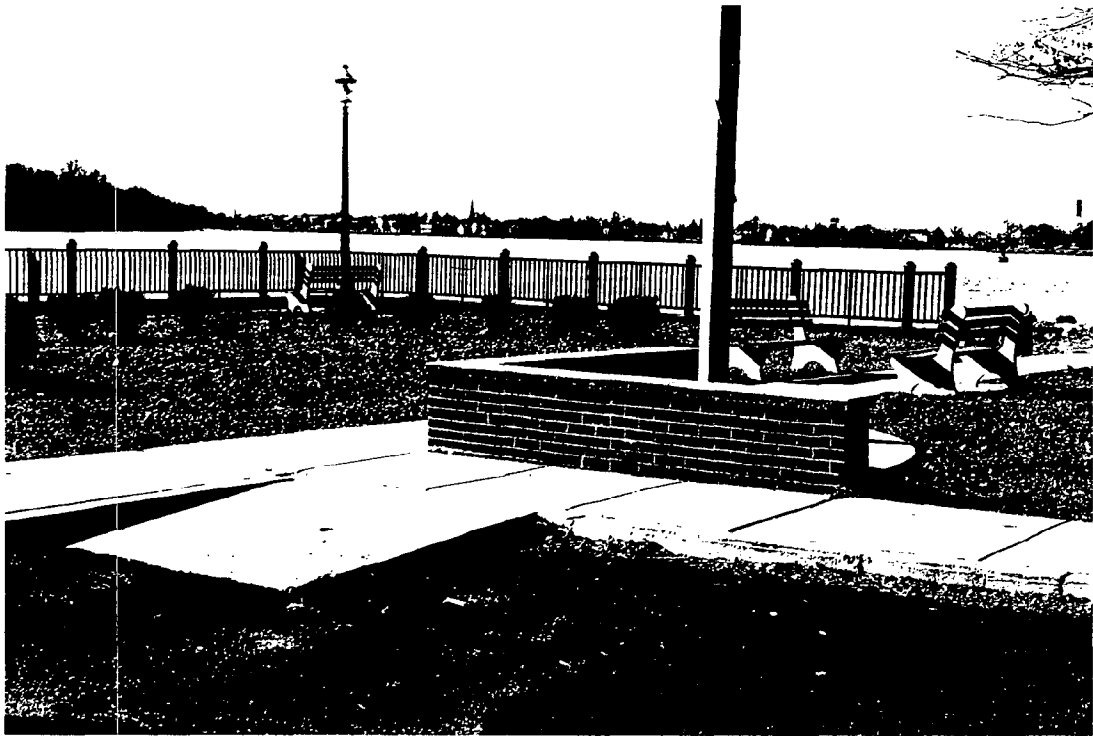
Administrative expenses and Architectural/engineering fees	\$ 6,000
Construction	<u>64,000</u>
	\$ 70,000

FUNDING SOURCE

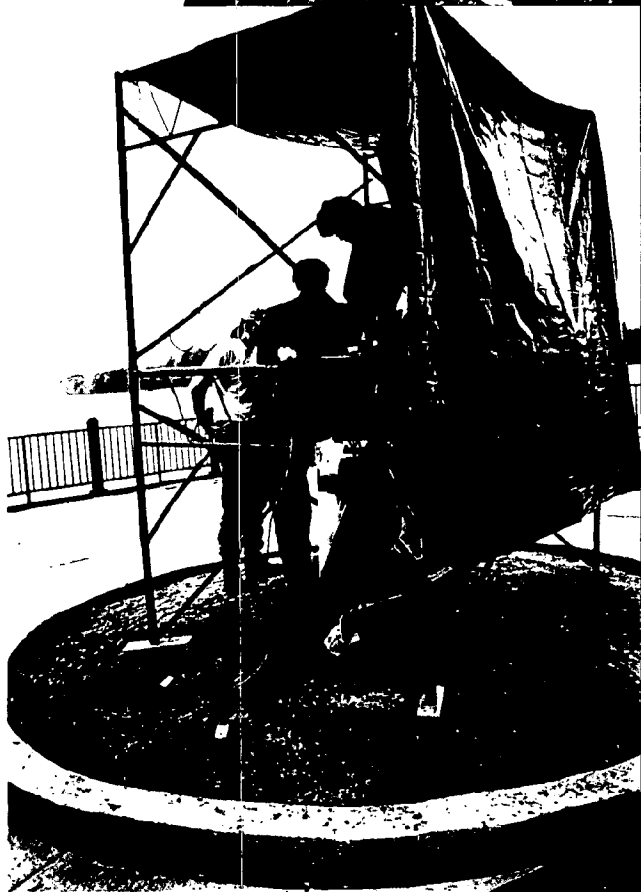
CZM funds	\$ 35,000
Local funds	<u>35,000</u>
	\$ 70,000

OBJECT CATEGORIES

Engineering consultant	\$ 6,000
Construction contractor	<u>64,000</u>
	\$ 70,000

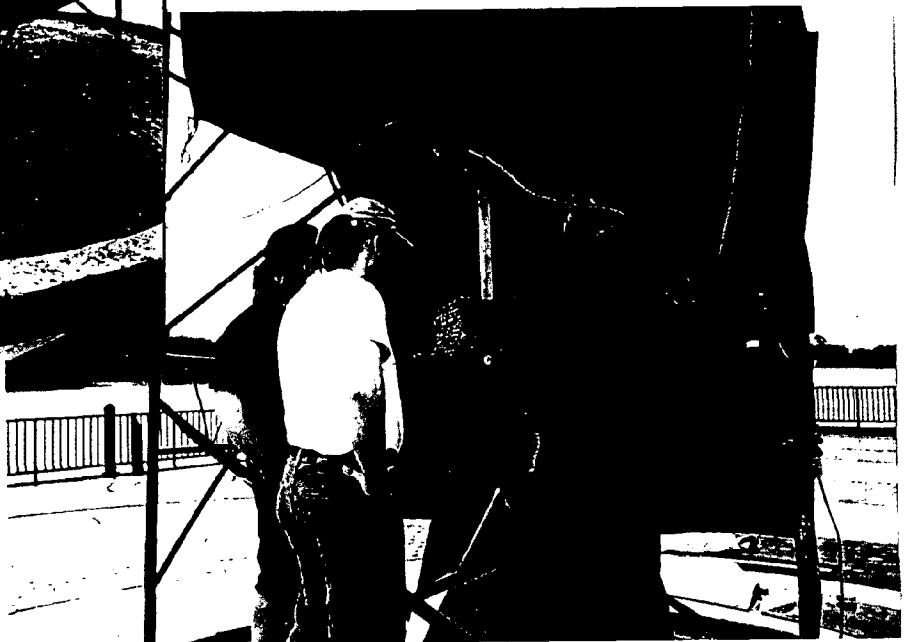


BEFORE



REPLACED CURBING

DURING





← BENCH

AFTER



← NEW CURB

BOAT
AT
DOCK



Bristol Borough Council proceeds with caution into aesthetics

Two grants will pay for a waterfront sculpture. A model first, please.

By Russell Gold
INQUIRER CORRESPONDENT

BRISTOL BOROUGH — Ever so cautiously, the Bristol Borough Council members are testing the temperamental waters of the art world in their search for a sculpture to serve as the focal point of a redesigned Market Street wharf.

In a vote this month, the council decided to commission a model from a Philadelphia artist, but the question of what the sculpture should look like is still under debate.

What's turned the eight council members, who are more accustomed to discussing financing ambulance squads and levying taxes, into art critics is a state grant for the improvement of the Delaware River waterfront.

Bristol Borough has received \$35,000 from the state Department of Environmental Resources in a coastal zone management grant for improvements to the wharf area. A matching \$35,000 grant is coming from the Grundy Foundation. Instead of plunging headlong into the

swirling currents of modern art, the council agreed this month to use grant money to pay for a model so they could see what a proposed sculpture will look like.

The overall plan for the wharf area was prepared by the borough's planning consultant, Kathy Kelly of DePalo Design & Planning in Conshohocken. Her idea includes covering the wharf with cement in a pattern of concentric circles. A sculpture, on a slight rise, is planned for the center.

But the question remains: What kind of

sculpture?

Kelly searched the Philadelphia area for a sculptor and found Ray King, a Philadelphian who works mostly in glass and metal. In a slide presentation in October, he showed the council a contemporary body of work. King was recently selected to build four 40-foot columns made of granite, stainless steel and laminated glass at the southern end of the Avenue of the Arts in Philadelphia.

His idea for Bristol Borough is more

See **SCULPTURE** on BC5

Council hedges aesthetic bets

SCULPTURE from BC-1

modest. At the October meeting, King showed a rough sketch of an "eternal flame" — a spiraling, glass-encased 12-foot column of light that ends in a point.

The council was impressed, but not overwhelmed.

"I thought it looked like a rocket ship," said council member Charles Quici, sounding dubious. He said he had in mind a more classical symmetrical design with, maybe, a sphere on top.

At a council meeting earlier this month, the council voted unanimously to use \$1,500 of the state money to have King develop a modified model. If the new design meets with the council's approval, then King will get additional money to complete the sculpture.

Phila. Inquirer 11/27/94

e shooting shook the
own and, especially,
merchants who were
with the victim.
lling occurred at As-
alth Care Center and
st Annex, 400 Mill
where Berger was
at his family business.
keeper was shot three
th a .32 caliber hand-
ng a struggle with Gib-
court ruled.
ing to police and the
ee page 20



Bob Castelli

"Vest-A-Cop" Committee

Bristol Borough Council President Joe Coffman has appointed a "Vest-a-Cop" Committee in order to raise money for bullet-proof vests for 14 police officers. The members of the committee are (from left): State Representative Tom Corrigan, Mary Gary Tosti, Coffman, officer Robert Lebo, Chief Frank Peranteau, and retired officer Allen Lebo. Local banker Terry Redinger is not photographed. All money left over will be spent on future vest purchases. To contribute, send checks to Bristol Borough Vest-a-Cop, c/o Joseph Coffman, 721 Garden Street, Bristol, PA 19007. Make checks payable to "Bristol Borough Vest-a-Cop."

ders
space
r sports
erous

employees came and
ramps away which
ad spent days to

more, they have been
away from that
und and other areas
they skateboard,
ng the Mill Run
ent Community
lot and behind First
Bank on Radcliffe

the "L" word, was
on borough council
being hesitant in
g the youths to
ard on borough
Council vowed to
a meeting for the
ders with Recreation
Lou Persichetti Jr. to
ossible solutions.
nan Charles Caucci
ee page 20

Council okays flame sculpture to enhance the Bristol Wharf

by David Jwanier

Bristol Borough Council found itself with two fascinating choices last week when artist Ray King presented proposals for the \$15,000 art work slated for unveiling this summer at the Mill Street Wharf.

The one selected by council was a 12-foot high flame made out of hundreds of pieces of one-half-inch-thick float glass. According to the sculptor, who has been commissioned for work on the entryway to the new Avenue of the Arts in Philadelphia (currently Broad Street), the 1,000-pound flame

will refract sunlight during the day and artificial light at night.

When completed, the artwork will grace the wharf in the area behind the Bristol Riverside Theatre and CoreStates Bank. Coastal Zone Management grant money will be used to pay for the piece.

The second choice, which garnered a lot of support from council as well, was a spherical shape called a dodecahedron. Inside the five-foot high sculpture was a star that would shoot off colored light by night or day. It would've also had a five-foot high base.

In the end, Mayor Gary Tosti

broke a tie and selected the flame. The dodecahedron appeared to capture council's imagination as a more dynamic artwork, but it was also deemed somewhat less durable than the flame. To replace a single pane of holographic glass for the dodecahedron was estimated at \$200.

The flame, according to King, will serve as a sort of "lighthouse" for the Bristol Wharf, a "welcoming beacon to the port." In addition, a veterans memorial may also be worked into the piece of art.

Merchant's plight a sign of times Borough codes forced removal of billboards

by David Jwanier

A Sixth Avenue businesswoman said the fragile state of her shop is the sign of the times in Bristol Borough.

Her problem?

Operating a handcrafted home decorations specialty store on a side street with little traffic is a tough road to hoe.

for small businesses such as hers to succeed.

"I've talked to other people who said they wanted to start businesses in Bristol Borough but decided against it because they didn't feel they would get cooperation from Bristol Borough," she said. "I feel that if they would accommodate our

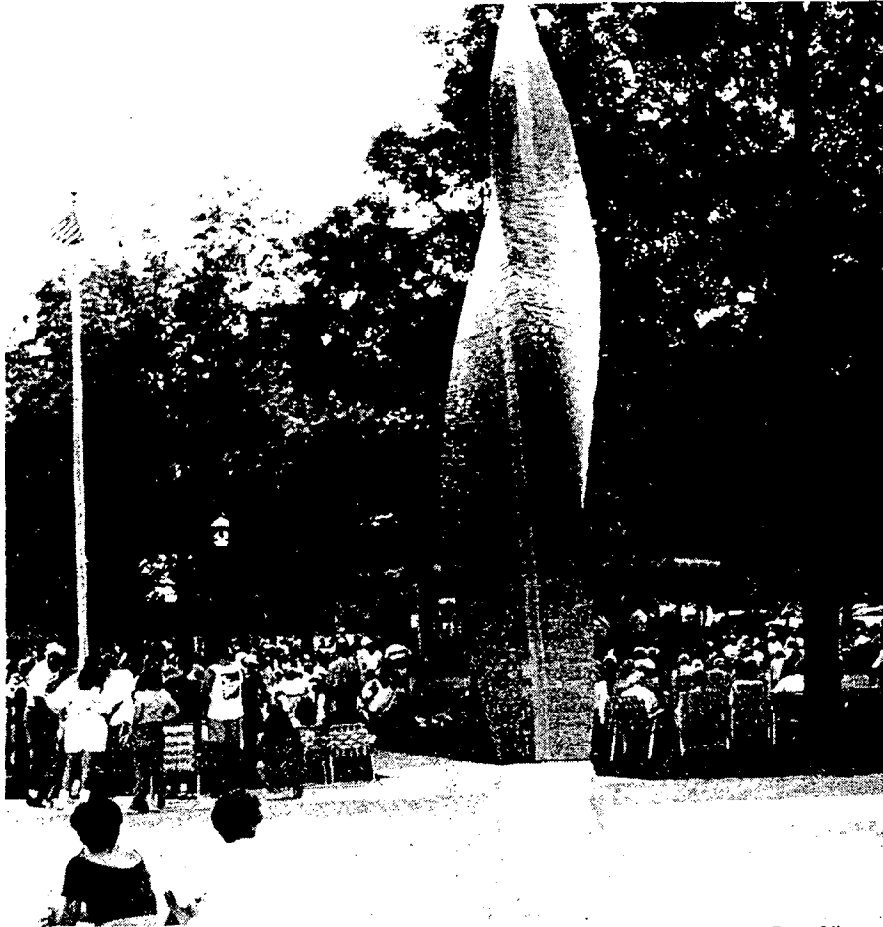


BRISTOL PILOT
3/16/95



Bob Castelli

(Left) Millie Hart, assistant branch manager of CoreStates Bank, Route 413 and New Falls Road in Levittown, accepts a \$300 donation from Bristol Pilot editor David Jwanier (right) for the Larry Morris Fund. The check was the result of a successful subscription drive earlier this year during which the Pilot pledged money to the fund for each new subscriber. Larry Morris is also photographed.



Don Aikens

A welcoming flame

This new sculpture, a 14-foot flame that refracts light, was unveiled recently in Bristol Lions Park, Bristol Borough. The artwork was designed by Philadelphia artist Ray King at a cost of \$15,000, which town council received from the state.

Call for blood in Bucks County

Every day Americans need blood; and every day America needs blood donors, even on the Fourth of July. To help boost local blood supplies that will be needed over the July Fourth Holiday Weekend and the first few days afterwards, the American Red Cross urges you to do what you can for Americans in need by donating blood this week.

said Kathleen C. Glackin, principal officer of the Penn-Jersey Region of American Red Cross Blood Services.

"Of particular concern are platelets, which only last five days. This blood component is important in the care of cancer patients," she said. "Red Cross will be able to respond to medical emergencies during and immediately after the holiday

donor identification card, which usually lists their last donation date, and their social security number with them to the drive.

In order to donate, you will need to know the name, purpose or category (for example, antibiotics) of any prescription medication you are currently taking or have taken in the last month. Donors should bring a list of those medications with them to the

near death, but he pulled through and his condition has improved steadily.

Diane said Larry needs

BRISTOL PILOT



FIC

Annual

M

We appreciate

Bring the family Officers and Staff to be free souvenir hours at our Pool. July 3rd will be 9

Our customers are

During the time been reopened to members and friends. In addition, quality financial services. In addition, year round. Visit Thursday 9-6; Fr

Come visit with our appreciation

FIC and Loan

Serving 201 POND

S I G N A W A R D S

MERIT AWARD

Bristol Borough's Lion's Park

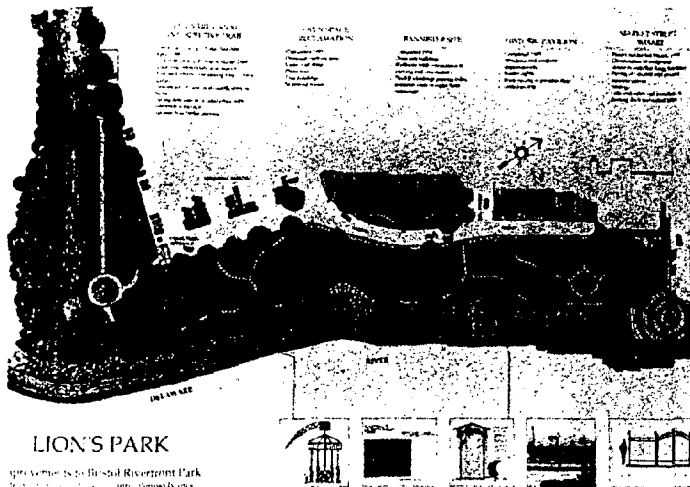
Category: Landscape Architectural Design

"Solid design and great improvement," commented the jury on this restoration and redesign project for a 10-acre, Delaware Riverfront Park.

DePallo Design & Planning of Conshohocken, PA developed a design that expanded the overall size of and brought unity to this much deteriorated park. Restoring an historic pavilion and the Market Street Wharf as well as redesigning the park's reclaimed open space were all involved in the process.

"The right thing to do and well executed," the jury further commented. "Can't wait for its completion." The completion date for the project is set for 1996.

The park is currently used in the evenings for passive recreation and concerts, and in the summer for large-scale events.

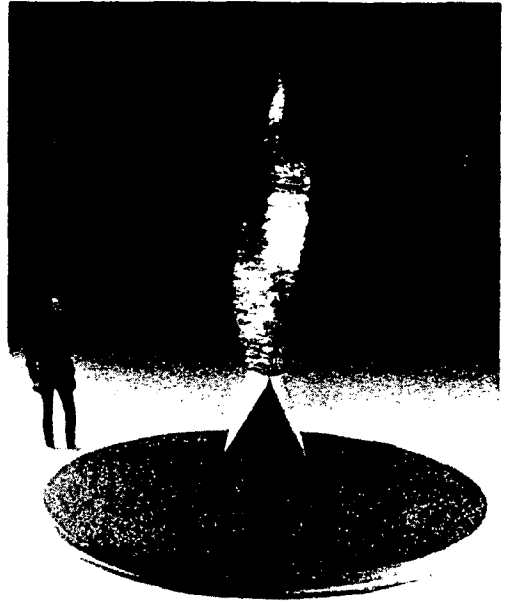


LION'S PARK

10th Avenue to Bristol Riverfront Park
Bristol Borough, PA

Existing and proposed improvements plan.

The overall size of the park has expanded and became more unified.



Model of proposed sculpture by Ray King. Glass "flame" is lit from within and is representative of a beacon from the water, a memorial to the Vietnam Veterans of Bristol who died.

Bannister site with open space reclamation beyond.



"The right thing to do and well executed...can't wait for its completion."

NOAA COASTAL SERVICES CTR LIBRARY



3 6668 14111487 8