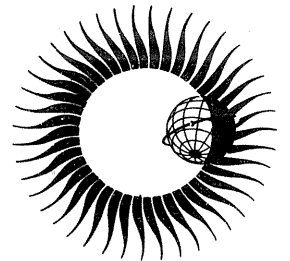


**WORLD DATA CENTER A
for
Solar-Terrestrial Physics**



**ISO-INTENSITY CONTOURS OF
GROUND MAGNETIC H PERTURBATIONS
FOR THE DECEMBER 16-18, 1971
GEOMAGNETIC STORM**



April 1976

WORLD DATA CENTER A

National Academy of Sciences
2101 Constitution Avenue, N. W.
Washington, D. C., U.S.A., 20418

World Data Center A consists of the Coordination Office
and seven Subcenters:

World Data Center A
Coordination Office
National Academy of Sciences
2101 Constitution Avenue, N. W.
Washington, D. C., U.S.A. 20418
[Telephone: (202) 389-6478]

Glaciology:

World Data Center A:
Glaciology
U.S. Geological Survey
1305 Tacoma Avenue South
Tacoma, Washington, U.S.A. 98402
[Telephone: (206) 593-6506]

Meteorology (and Nuclear Radiation):

World Data Center A:
Meteorology
National Climatic Center
Federal Building
Asheville, North Carolina, U.S.A. 28801
[Telephone: (704) 258-2850]

Oceanography:

World Data Center A:
Oceanography
National Oceanic and Atmospheric
Administration
Washington, D. C., U.S.A. 20235
[Telephone: (202) 634-7249]

Rockets and Satellites:

World Data Center A:
Rockets and Satellites
Goddard Space Flight Center
Code 601
Greenbelt, Maryland, U.S.A. 20771
[Telephone: (301) 982-6695]

Rotation of the Earth:

World Data Center A:
Rotation of the Earth
U.S. Naval Observatory
Washington, D. C., U.S.A. 20390
[Telephone: (202) 254-4023]

Solar-Terrestrial Physics (Solar and
Interplanetary Phenomena, Ionospheric
Phenomena, Flare-Associated Events,
Geomagnetic Variations, Magnetospheric
and Interplanetary Magnetic Phenomena,
Aurora, Cosmic Rays, Airglow):

World Data Center A
for Solar-Terrestrial Physics
Environmental Data Service, NOAA
Boulder, Colorado, U.S.A. 80302
[Telephone: (303) 499-1000, Ext. 6467]

Solid-Earth Geophysics (Seismology,
Tsunamis, Gravimetry, Earth Tides,
Recent Movements of the Earth's
Crust, Magnetic Measurements,
Paleomagnetism and Archeomagnetism,
Volcanology, Geothermics):

World Data Center A
for Solid-Earth Geophysics
Environmental Data Service, NOAA
Boulder, Colorado, U.S.A. 83002
[Telephone: (303) 499-1000, Ext. 6521]

Notes:

- (1) World Data Centers conduct international exchange of geophysical observations in accordance with the principles set forth by the International Council of Scientific Unions. WDC-A is established in the United States under the auspices of the National Academy of Sciences.
- (2) Communications regarding data interchange matters in general and World Data Center A as a whole should be addressed to: World Data Center A, Coordination Office (see address above).
- (3) Inquiries and communications concerning data in specific disciplines should be addressed to the appropriate subcenter listed above.

WORLD DATA CENTER A for Solar-Terrestrial Physics



REPORT UAG - 56

ISO-INTENSITY CONTOURS OF GROUND MAGNETIC H PERTURBATIONS FOR THE DECEMBER 16-18, 1971 GEOMAGNETIC STORM

by

Y. Kamide

Cooperative Institute for Research in Environmental Sciences
University of Colorado, Boulder, Colorado 80302 U.S.A.

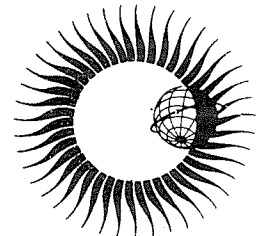
and

Geophysical Institute, University of Alaska,
Fairbanks, Alaska 99701 U.S.A.

April 1976

Published by World Data Center A for
Solar-Terrestrial Physics, NOAA, Boulder, Colorado
and printed by

U.S. DEPARTMENT OF COMMERCE
NATIONAL OCEANIC AND ATMOSPHERIC ADMINISTRATION
ENVIRONMENTAL DATA SERVICE
Asheville, North Carolina, USA 28801



SUBSCRIPTION PRICE: \$25.20 a year; \$12.00 additional for foreign mailing; single copy price varies.* Checks and money orders should be made payable to the Department of Commerce, NOAA. Remittance and correspondence regarding subscriptions should be sent to the National Climatic Center, Federal Building, Asheville, NC 28801, Attn: Publications.

*PRICE THIS ISSUE \$0.70

TABLE OF CONTENTS

| | <u>Page</u> |
|-------------------------------------|-------------|
| PART I | |
| 1. Introduction | 1 |
| 2. The December 16-18, 1971 Storm | 1 |
| 3. Practical Procedure and Examples | 3 |
| 4. Availability of Detailed Data | 5 |
| Acknowledgements | 6 |
| References | 6 |
| PART II | |
| The 10-minute Plots | 7-37 |

ISO-INTENSITY CONTOURS OF GROUND MAGNETIC H PERTURBATIONS
FOR THE DECEMBER 16 - 18, 1971 GEOMAGNETIC STORM

by

Y. Kamide*
Cooperative Institute for Research in Environmental Sciences
University of Colorado, Boulder, Colorado 80302

and

Geophysical Institute
University of Alaska
Fairbanks, Alaska 99701

PART I

1. Introduction

The geomagnetic storm is one of the dramatic signatures of the solar-terrestrial phenomena which are observable on and near the earth. Many storms seem to follow by a day or so the large solar flares or other flurries of solar activity. Among the various kinds of space and ground manifestations of the storm, the storm's growth and decay can be most typically recognized in the H-component magnetic depression at middle and low latitudes which is attributable to the ring current in the magnetosphere. For this reason the initial, main and recovery phases of the magnetic storm have conventionally been identified from the mid-latitude magnetic records.

A dramatic magnetic storm which began at 1904 UT on December 16, 1971 has been very interesting to study in detail because of the large amount of ground-based and satellite data available. The particular sequence of processes characterizing this storm is commonly observed in many other large storms. Some works on the interpretation of specific storm features and their physical processes have already been published for this storm, and other studies are still being made.

To examine the progressive change of the storm in terms of ground magnetic signatures, we prepared consecutive iso-intensity contours of the H-component ground magnetic perturbations at middle and low latitudes. From these we estimated the intensity and the location of the symmetric and asymmetric storm-time ring current. A total of 720 contour maps, one every 5 minutes, was produced using 52 northern hemisphere magnetic observatories for the 2½ day or 60-hour interval 1200 UT December 16 to 2400 UT December 18, 1971. Then, an interpolation technique was used to obtain 30 second contours from which a movie film was produced. This report provides excerpts from the movie film, giving the maps and the corresponding geomagnetic activity indices for every 10 minutes.

The author provides these data as a tool for use with satellite observations to improve the understanding of solar-terrestrial processes.

2. The December 16 - 18, 1971 Storm

Solar activity, solar radiation, ionospheric disturbances, cosmic rays, and geomagnetic and radio propagation indices during the December 16 - 18, 1971, storm are given in *SGD*, Number 330, Part I [1972].

Figure 1 shows some of the conventional representations of the time-varying characteristics of the storm. From top to bottom it gives the auroral electrojet indices AU and AL [Allen *et al.* 1975], the superposed H-component records from ten mid-latitude observatories, and the Dst index for the interval from 1200 UT December 16 to 2400 UT December 18, 1971. Two kinds of the equatorial Dst indices are plotted: a 5-min Dst calculated from the ten observatories' data (for the method of the calculation see the next section), and an hourly Dst [Sugiura and Poros, 1972] which was calculated by using data from four observatories (Hermanus, Kakioka, Honolulu, and San Juan). There is a general agreement between these two curves, except during the main phase of the storm (1700 - 2200 UT, December 17, 1971); the maximum depression in the 5-min Dst was -202γ , but only -157γ in the hourly Dst.

During the interval, there occurred two major storm sudden commencements (ssc) at 1904 UT December 16 and at 1418 UT December 17, which are identified by dashed lines in Figure 1. This we conveniently call a double magnetic storm [Cahill, 1973]. The two periods of world magnetic disturbance following these two sudden commencements are quite different in appearance. Following the first

* Guestworker at Data Studies Division, NOAA/EDS/NGSDC, Boulder, Colorado 80302.

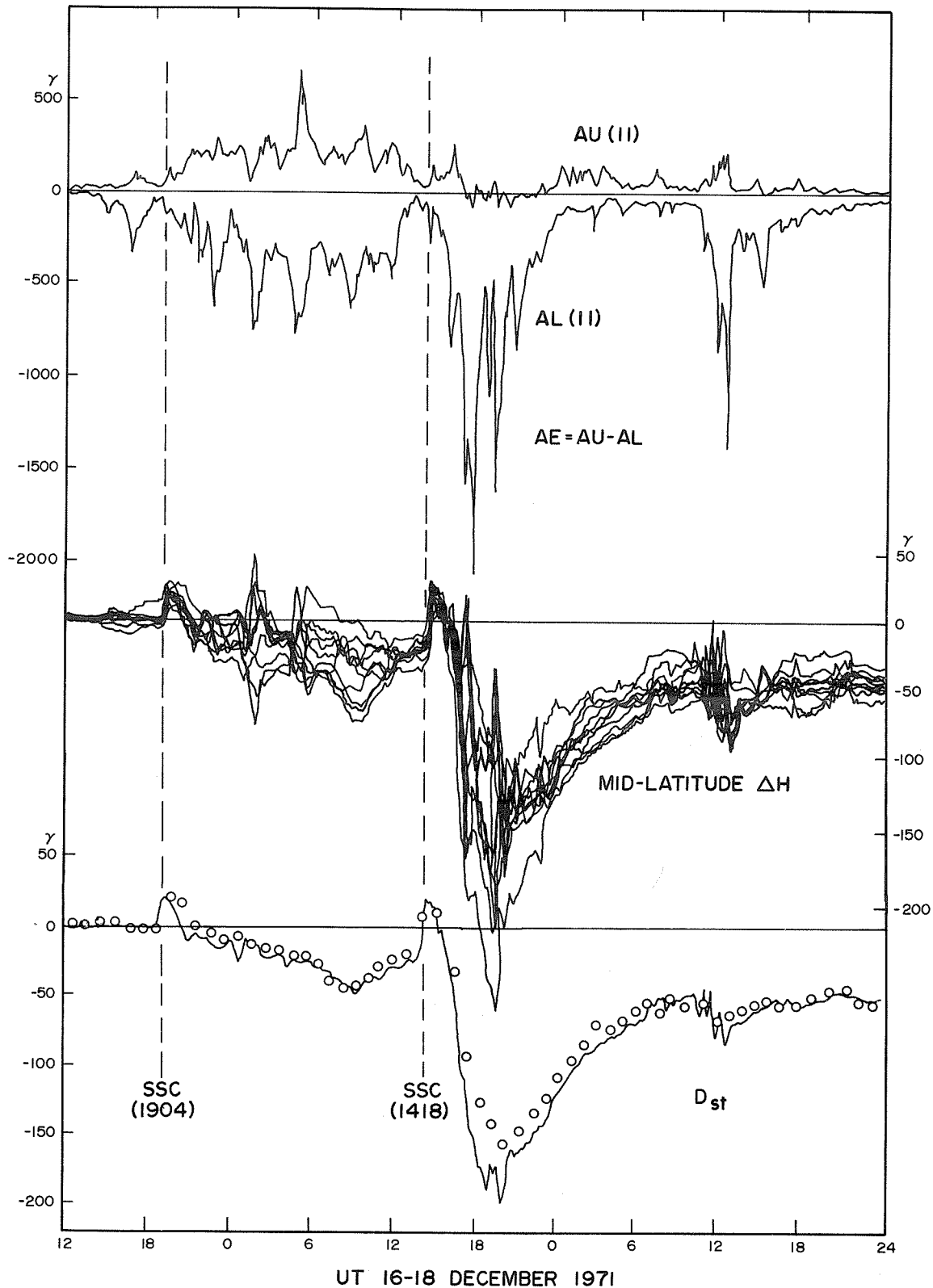


Fig. 1. The auroral electrojet indices, the superposed H-component records from ten mid-latitude observatories, and the Dst index. The 5-min Dst (solid line) are calculated from data at ten mid-latitude observatories. The hourly Dst (circles) are from data at four observatories [Sugiura and Poros, 1972].

sudden commencement, the ground records in auroral latitudes show successive substorm activity; the maximum AE index ($AE = AU - AL$) was greater than 1400γ (at about 0445 UT on December 17). However, the corresponding worldwide depression at middle and low latitudes was not very large; the minimum Dst was only -50γ . On the other hand, a rapidly growing main phase (the minimum Dst was -202γ) followed the second sudden commencement. During the early main phase AL reached -2000γ , although the simultaneous AU was quite small. This is one of the characteristics of the auroral electrojet activity during the maximum phase of a great magnetic storm. Throughout the two periods, the main phase decrease in the H component at mid and low latitudes was asymmetric, as indicated by the large differences in value among the observatories plotted.

By 0000 UT December 18, the electrojet activity ceased, and there was no appreciable substorm activity until an intense substorm took place at about 1030 UT. During the interval from the main phase (1900 UT December 17) to the onset of the substorm during the recovery phase (1030 UT December 18), the world depression showed a rapid recovery from about -200γ to -50γ in the Dst index. After 1200 UT December 18, all mid- and low-latitude observatories showed a slowly decreasing ring current effect. Not until the end of December 21 (not shown in Figure 1) did the depression recover completely.

All these ground magnetic signatures are commonly observed in many other large storms, e.g., April 1965, February 1967, March 1970, and August 1972. There have been a number of published works on these magnetic storms. Some unsolved topics of interest are:

1. Why are there two sudden commencements?
2. Why does a large main-phase depression occur only after the second sudden commencement?
3. Why is there no AU activity during the main phase?
4. What is the main constituent of the storm-time ring current?
5. Why does the main-phase depression show an asymmetric growth with respect to local time?
6. Why is the recovery of the main-phase depression two-fold (rapid recovery and subsequent slow recovery)?

2. Practical Procedure and Examples

To examine the growth and decay of the storm-time magnetic disturbances in these dimensions (time and geographical locations), we made iso-intensity contours of the ground magnetic perturbations at middle and low latitudes for a $2\frac{1}{2}$ day period of the magnetic storm 1200 UT December 16 - 2400 UT December 18, 1971. The quiet interval, which was used as the baseline, was 1200 UT December 15 - 1200 UT December 16, 1971, when $\Sigma Kp = 4+$.

The first step was digitizing the H-component traces from 52 northern hemisphere magnetic observatories (see Table 1) for both disturbed and quiet intervals. These 52 observatories were all the data available through the World Data Center A for Solar-Terrestrial Physics at the time of the study. Figure 2 shows the location of these observatories in geomagnetic "latitude - local time" coordinates for 1200 UT. Observatories are identified by observatory numbers which are also given in Table 1. A value was taken every 5 minutes during the storm period and every one hour during the quiet periods. The 5-min disturbed values were then subtracted from 5-min quiet-time values, interpolated linearly from the hourly values, to obtain H-perturbation values at each observatory.

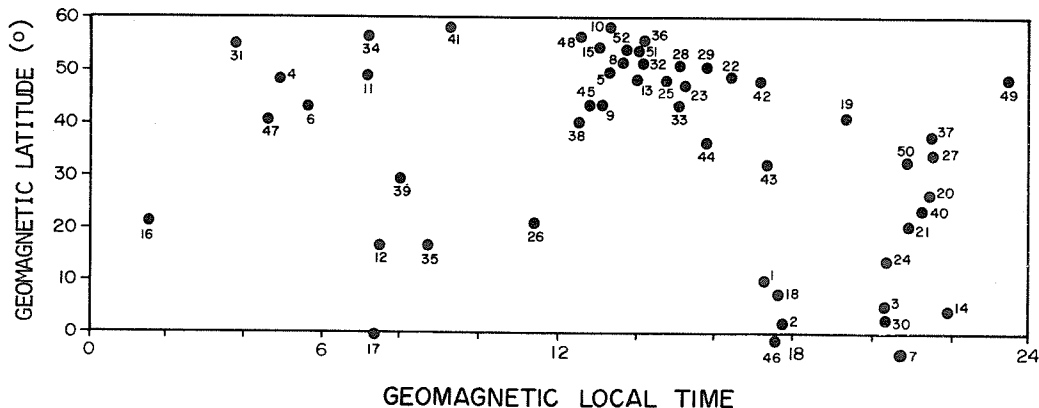


Fig. 2. Distribution of the 52 magnetic observatories whose data are used in this report (see Table 1).

Table 1.

| Observatories used for the plot of the iso-intensity contours of ground magnetic H perturbations | | | | | |
|--|------------------|---------------------|---------------------|---------------------|---------------------|
| No. | Observatory | Geographic | | Geomagnetic* | |
| | | Latitude (north) | Longitude (east) | Latitude (north) | Longitude (east) |
| 1 | ALIBAG | 18.63° | 72.87° | 9.43° | 144.34° |
| 2 | ANNAMALAINAGAR | 11.40 | 79.68 | 1.51 | 150.10 |
| 3 | BAGUIO | 16.42 | 120.60 | 5.16 | 189.98 |
| 4 | BOULDER | 40.13 | 254.77 | 49.04 | 317.40 |
| 5 | CHAMBON-LA-FORET | 48.02 | 2.27 | 50.31 | 85.07 |
| 6 | DALLAS | 32.98 | 263.25 | 42.98 | 328.64 |
| 7 | DAVAO | 7.08 | 125.58 | -3.95 | 195.26 |
| 8 | DOORBES | 50.10 | 4.60 | 51.83 | 88.39 |
| 9 | EBRO | 40.82 | 0.50 | 43.74 | 86.37 |
| 10 | ESKDALEMUIR | 55.32 | 356.80 | 58.31 | 83.57 |
| 11 | FREDERICKSBURG | 38.20 | 282.63 | 49.51 | 350.78 |
| 12 | FUQUENE | 5.47 | 286.27 | 16.88 | 355.87 |
| 13 | FURSTENFELDBRUCK | 48.17 | 11.28 | 48.67 | 93.99 |
| 14 | GUAM | 13.58 | 144.87 | 4.10 | 213.63 |
| 15 | HARTLAND | 50.98 | 355.52 | 54.48 | 79.70 |
| 16 | HONOLULU | 21.32 | 202.00 | 21.23 | 267.29 |
| 17 | HUANCAYO | -12.05 | 284.67 | -0.67 | 354.55 |
| 18 | HYDERABAD | 17.42 | 78.55 | 7.61 | 149.62 |
| 19 | IRKUTSK | 52.17 | 104.45 | 40.78 | 175.31 |
| 20 | KAKIOKA | 36.23 | 140.18 | 26.15 | 206.65 |
| 21 | KANOYA | 31.42 | 130.88 | 20.65 | 198.75 |
| 22 | KAZAN | 55.83 | 48.85 | 49.26 | 130.94 |
| 23 | KIEV | 50.72 | 30.30 | 47.46 | 112.79 |
| 24 | LUNPING | 25.00 | 121.17 | 13.76 | 190.19 |
| 25 | LVOV | 49.90 | 23.75 | 47.89 | 106.49 |
| 26 | M'BOUR | 14.40 | 343.02 | 21.07 | 55.77 |
| 27 | MEMAMBETSU | 43.90 | 144.20 | 34.14 | 209.10 |
| 28 | MINSK | 54.10 | 26.52 | 51.37 | 110.98 |
| 29 | MOSCOW | 55.48 | 37.32 | 50.77 | 121.08 |
| 30 | MUNTINLUPA | 14.37 | 121.02 | 3.13 | 190.46 |
| 31 | NEWPORT | 48.26 | 243.01 | 55.18 | 301.13 |
| 32 | NIEMEGK | 52.07 | 12.68 | 52.10 | 97.21 |
| 33 | ODESSA | 46.78 | 30.88 | 43.57 | 111.74 |
| 34 | OTTAWA | 45.40 | 284.40 | 56.76 | 352.51 |
| 35 | PARAMARIBO | 5.82 | 304.78 | 16.88 | 15.13 |
| 36 | RUDE SKOV | 55.85 | 12.45 | 55.74 | 99.16 |
| 37 | SAKHALINSK | 46.95 | 142.72 | 37.02 | 207.33 |
| 38 | SAN FERNANDO | 36.47 | 353.80 | 40.81 | 72.06 |
| 39 | SAN JUAN | 18.12 | 293.85 | 29.79 | 3.98 |
| 40 | SIMOSATO | 33.57 | 135.93 | 23.15 | 203.13 |
| 41 | ST. JOHN'S | 47.60 | 307.30 | 58.39 | 22.17 |
| 42 | SVERDLOVSK | 56.73 | 61.07 | 48.45 | 141.26 |
| 43 | TASHKENT | 41.33 | 69.62 | 32.30 | 144.07 |
| 44 | TBILISI | 42.08 | 44.70 | 36.58 | 122.72 |
| 45 | TOLEDO | 39.88 | 355.93 | 43.71 | 75.39 |
| 46 | TRIVANDRUM | 8.48 | 76.95 | -1.11 | 147.11 |
| 47 | TUCSON | 32.25 | 249.17 | 40.50 | 313.06 |
| 48 | VALENTIA | 51.93 | 349.75 | 56.48 | 74.18 |
| 49 | VICTORIA | 48.52 | 236.58 | 54.27 | 293.51 |
| 50 | VLADIVOSTOK | 43.68 | 132.17 | 32.38 | 198.60 |
| 51 | WINGST | 53.75 | 9.07 | 54.27 | 95.32 |
| 52 | WITTEVEEN | 52.82 | 6.67 | 54.00 | 91.85 |

* These coordinates based on different model than that used in Report UAG-38.

As a by-product, we calculated the equatorial Dst index for every 5 minutes from ten mid-latitude observatories' H perturbation values (denoted by ΔH). The observatories used are Dallas, Ebro, Honolulu, M'Bour, Memambetsu, Odessa, Sakhalinsk, San Juan, Tashkent, Vladivostok. The equatorial Dst is given by

$$Dst = -\frac{1}{10} \sum_{i=1}^{10} \Delta H_i \sec \phi_{mi} ,$$

where ϕ_{mi} is the geomagnetic latitude of the i -th observatory. These are the Dst values given by the solid curve in Figure 1.

The iso-intensity contour is drawn in geomagnetic "latitude - local time" coordinates. Figure 3 shows a schematic illustration. The letter H or L in the center of each vortex expresses high or low intensity, respectively, of the magnetic H-component perturbation as compared with the values surrounding the region. Iso-intensity contour lines are drawn for every 20 γ intervals. In the actual diagram, contour lines are labelled at every 40 γ interval.

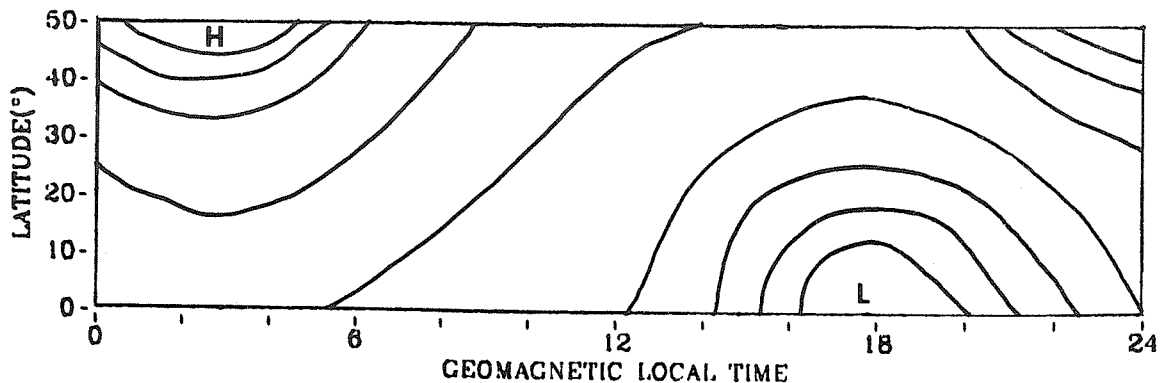


Fig. 3. Schematic iso-intensity contour plot of ground magnetic H perturbations which appear during magnetic substorms and storms.

Because features similar to Figure 3 appear repeatedly in the consecutive patterns of the contour maps, we will briefly discuss some aspects of the currents which produce such characteristic features. There are essentially two different vortices, H and L: H in the early morning and L in the evening sectors. The high vortex is centered in high latitudes, whereas the low vortex is in low latitudes, suggesting that the current sources are different for these two disturbances. If the magnetic disturbances are larger in higher latitudes, field-aligned currents or return currents from the auroral electrojet or a combination of the two could be the source currents. That is, either the field-aligned currents flowing into the morning part and out from the evening part of the ionosphere or eastward ionospheric currents will produce the same kind of distributions of the positive H perturbations on the earth's surface. If the magnetic disturbances are largest in the equatorial region and decrease with an increase of the latitude, the ring current in the magnetosphere may be responsible for such a magnetic signature. In this way, the negative H perturbations could be explained by the partial (westward) ring current in the evening sector. Note, however, that actual patterns observed during the storm period are not as simple as this, but there often appear several complicated vortices which require detailed examination for each pattern of these cases.

In Figure 4, we show an actual example of the obtained iso-intensity contours, the one for 1705 UT on December 17, 1971. This particular example was taken from the early main phase of the magnetic storm when auroral electrojet activity reached nearly its maximum value. The AU(11) and AL(11) indices and the Dst indices are plotted for every 5 minutes for the entire 60-hr interval. Time is identified along the bottom of the index plots, 3 hours per tick mark. The time, for which the iso-intensity contour is illustrated in the lower half of the Figure, is marked by the vertical timing bar which in the movie film and the excerpts given in this report moves from left to right as time progresses. Universal time and date are identified at the top right of the contour plot.

4. Availability of Detailed Data

The full data set is available on a 16-mm movie film 575 feet in length. Each frame on the movie shows a frame like Figure 4 every 30 seconds, and is repeated two times to allow the viewers to follow the progression of the storm disturbances. Film copies may be obtained from the Data Studies Division, NOAA/EDS/NGSDC, Boulder, Colorado 80302, U.S.A., at a cost of \$60.00 per film.

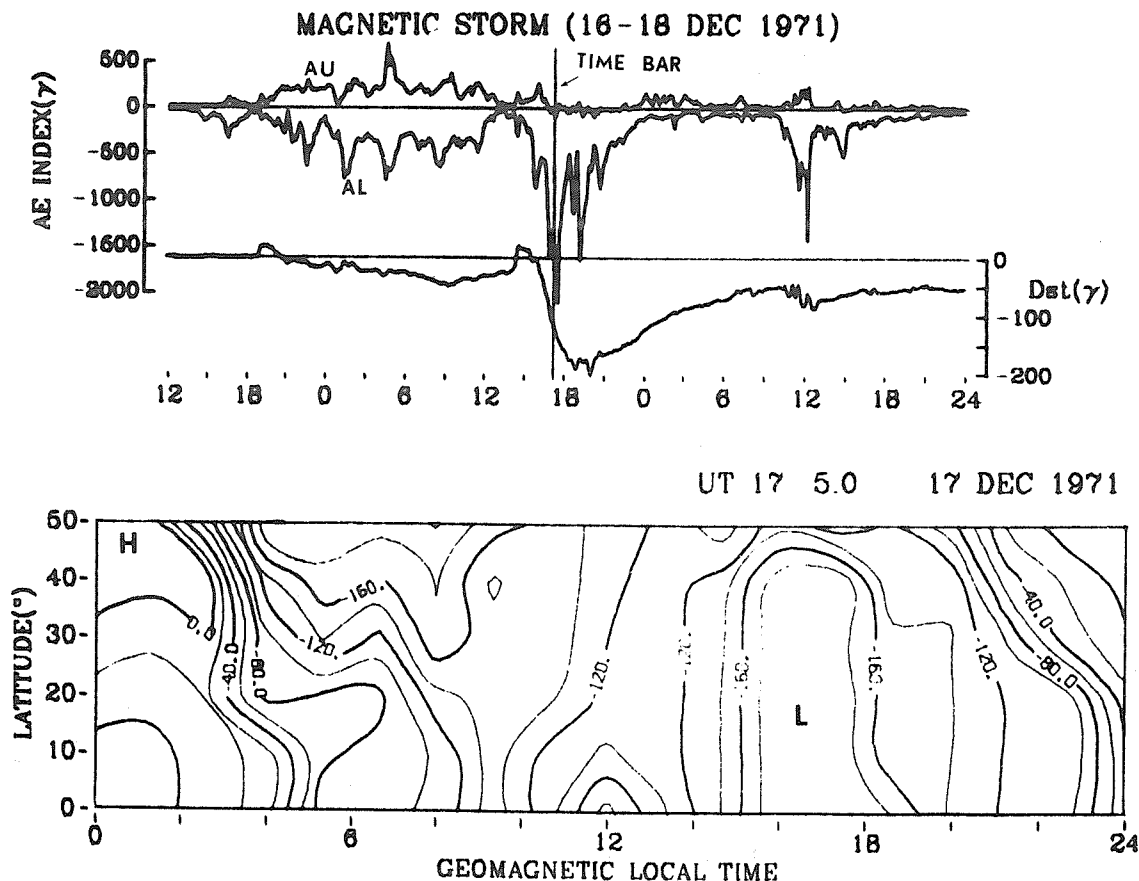


Fig. 4. Example of the iso-intensity contour and the corresponding geomagnetic activity indices.

Acknowledgements

It is a pleasure to acknowledge the useful suggestions given by Dr. S.-I. Akasofu of the University of Alaska, the assistance in computer programming by Dr. M. Kanamitsu of the National Center for Atmospheric Research, and the careful digitization by Mr. C. Samora of the National Oceanic and Atmospheric Administration. I wish to express my gratitude to Mr. A. H. Shapley and Miss J. V. Lincoln for offering the possibility of having this report published in the World Data Center A, UAG Report series.

The computations were made using the CDC 6600 computer system of the National Oceanic and Atmospheric Administration and the CDC 7600 system of the National Center for Atmospheric Research, both in Boulder, Colorado. The National Center for Atmospheric Research is sponsored by the National Science Foundation. This work was also supported in part by the National Science Foundation, Atmospheric Science Section, under grant DES74-23832 to the Geophysical Institute of the University of Alaska.

REFERENCES

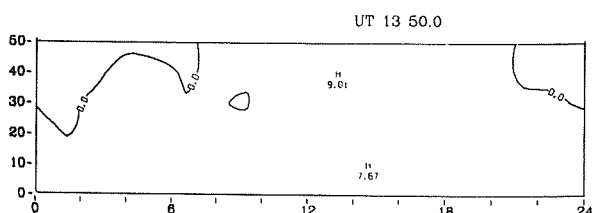
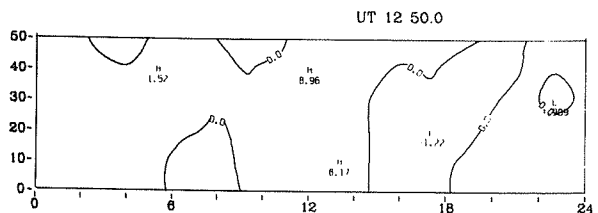
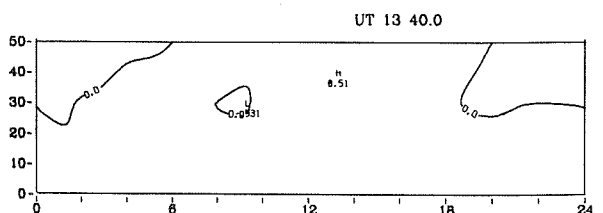
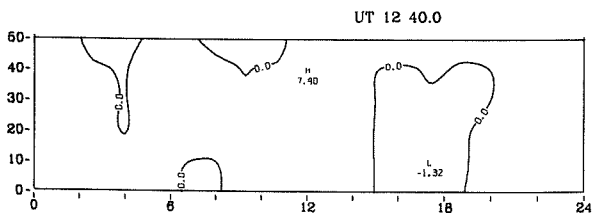
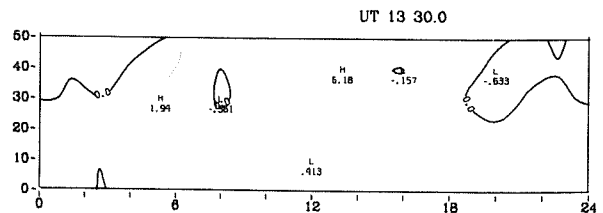
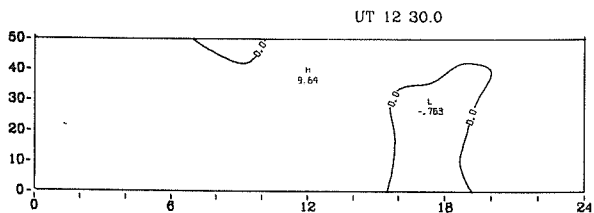
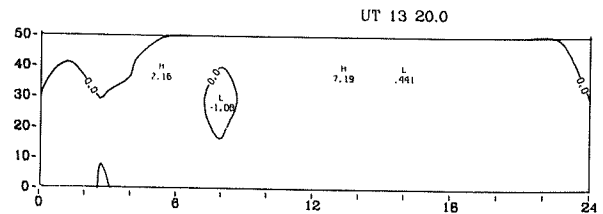
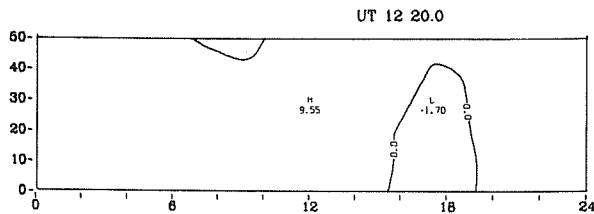
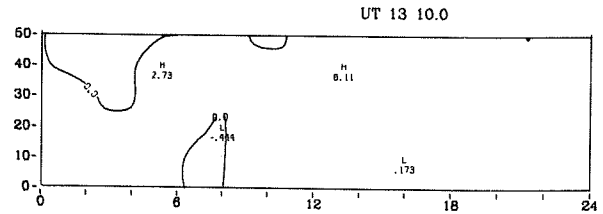
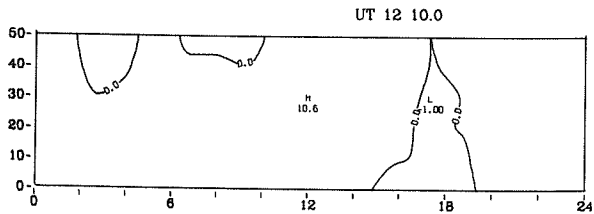
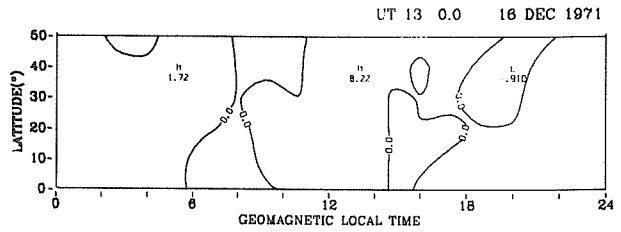
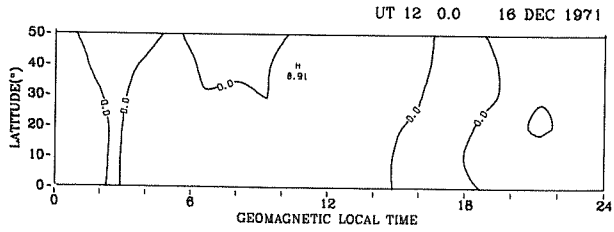
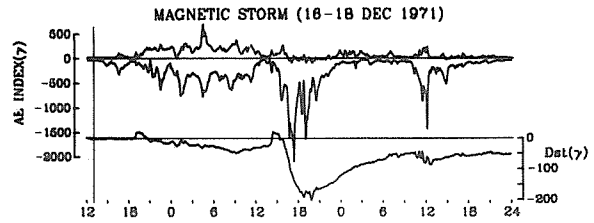
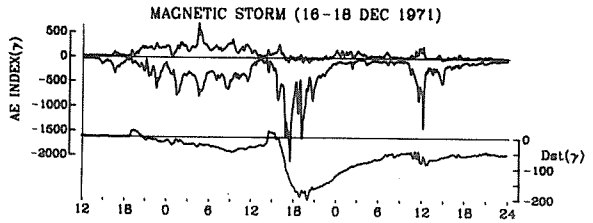
- | | | |
|---|------|--|
| ALLEN, J. H., C. C. ABSTON and L. D. MORRIS | 1975 | Auroral Electrojet Magnetic Activity Indices AE(11) for 1971, <i>World Data Center A for Solar-Terrestrial Physics, Report UAG-39</i> , Boulder, Colorado. |
| CAHILL, L. J. Jr. | 1973 | Magnetic Storm Inflation in the Evening Sector, <i>J. Geophys. Res.</i> , 78, 4724. |
| SGD | 1972 | <i>Solar-Geophysical Data</i> , 330 Part I, February 1972, U.S. Department of Commerce, (Boulder, Colorado, U.S.A. 80302). |
| SUGIURA, M. and D. J. POROS | 1972 | Provisional Hourly Values of Equatorial Dst for 1971, <i>Goddard Space Flight Center, Report X-645-72-200</i> , Greenbelt, Maryland. |

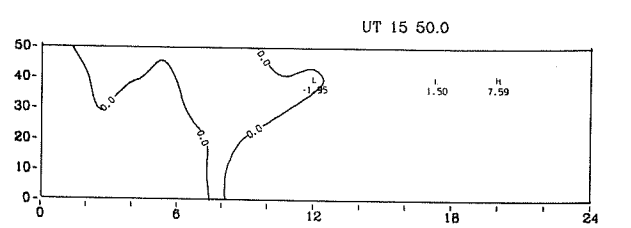
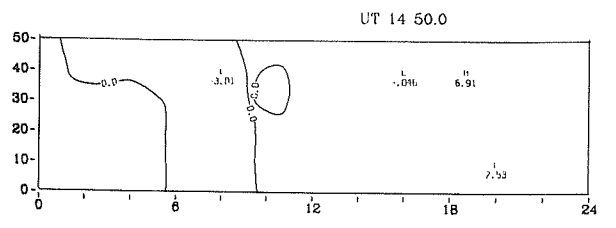
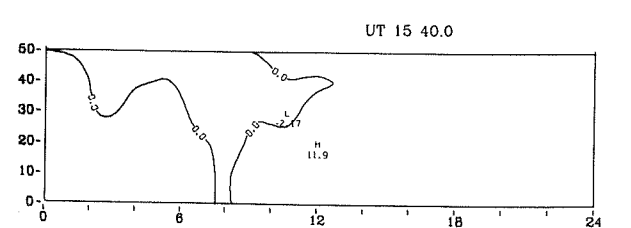
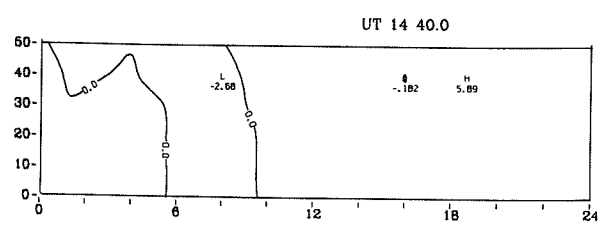
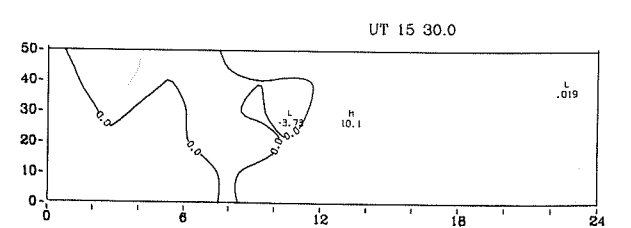
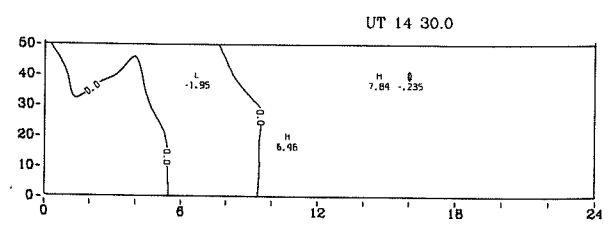
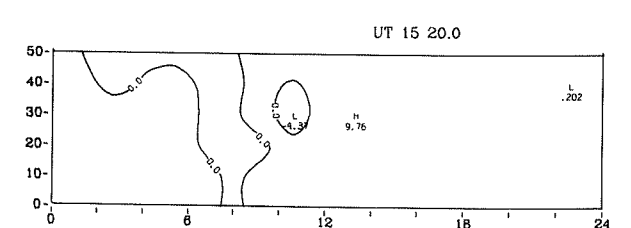
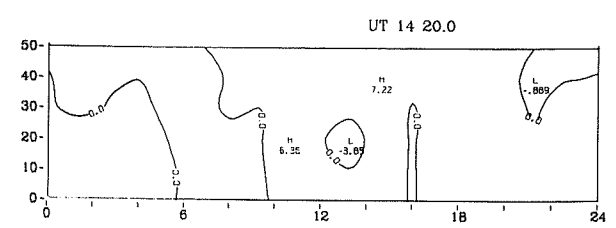
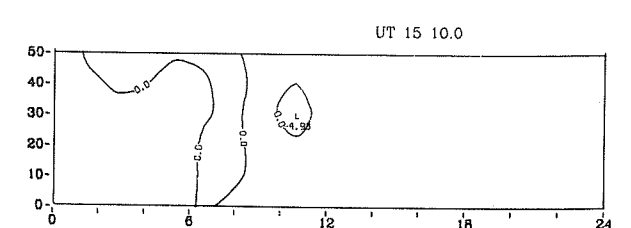
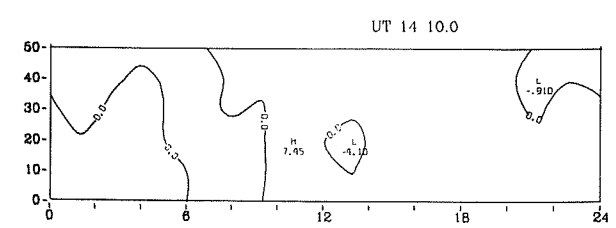
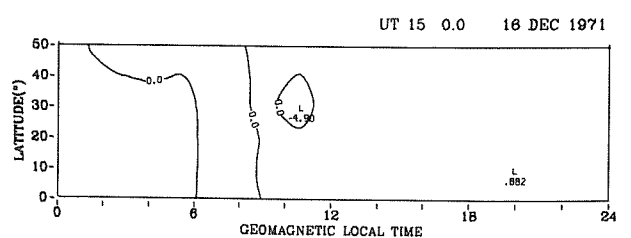
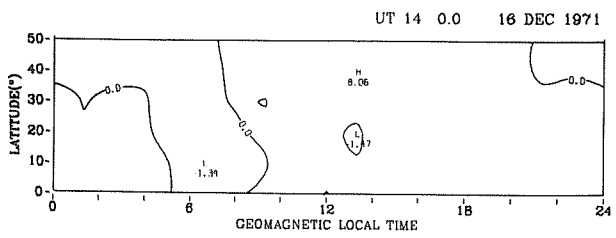
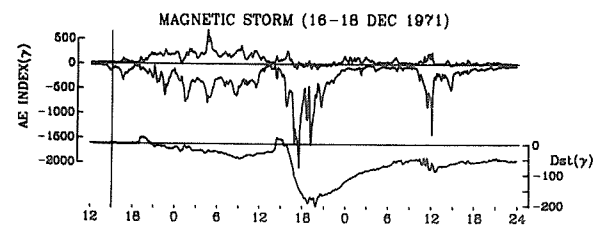
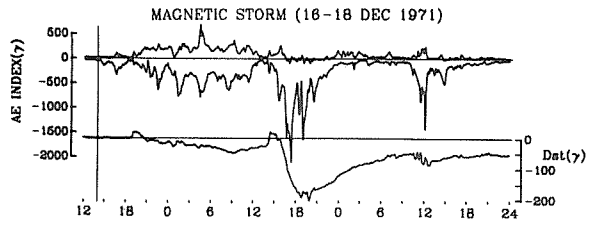
PART II

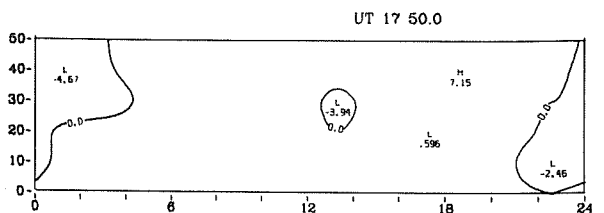
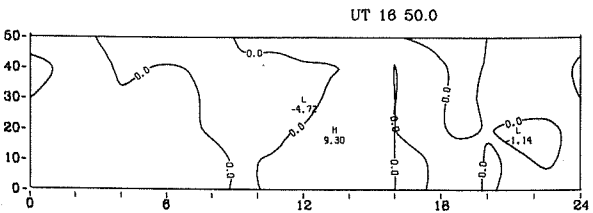
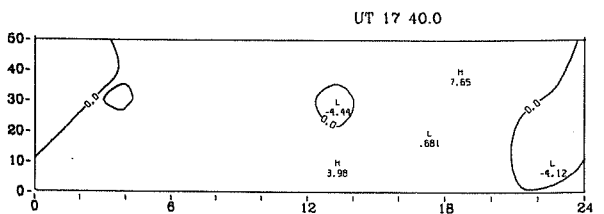
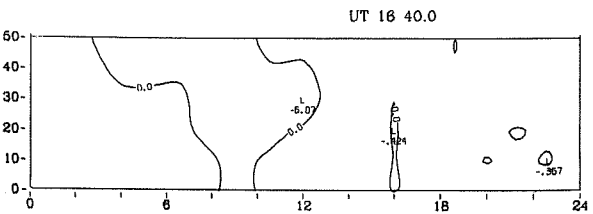
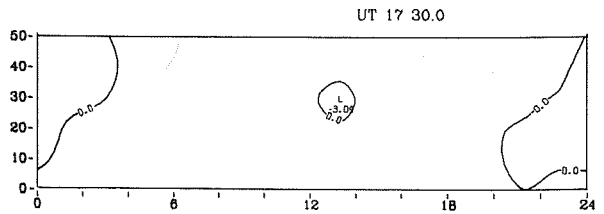
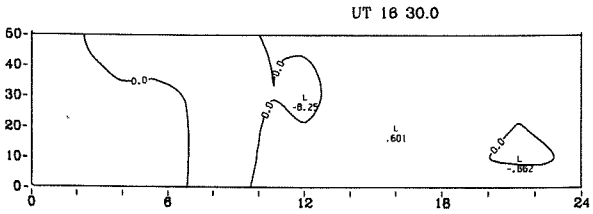
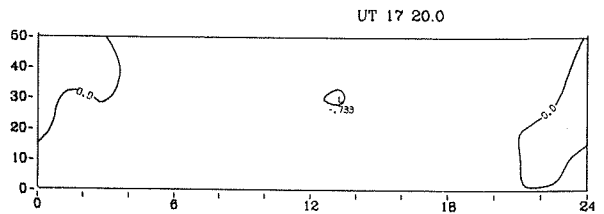
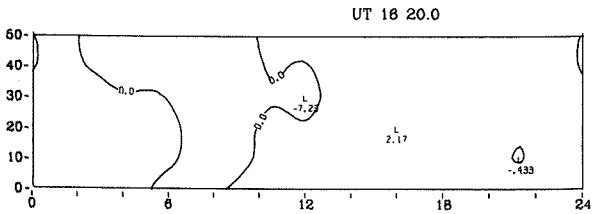
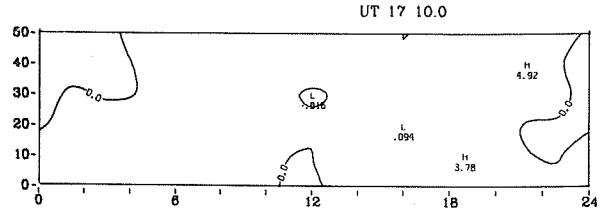
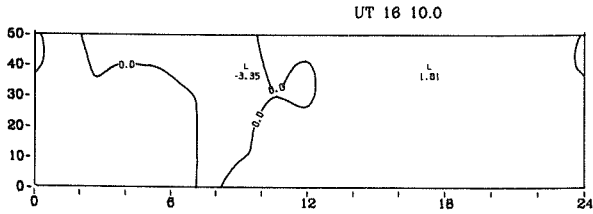
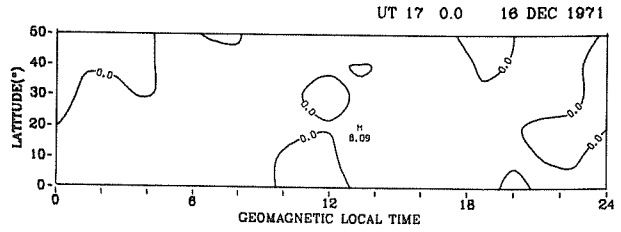
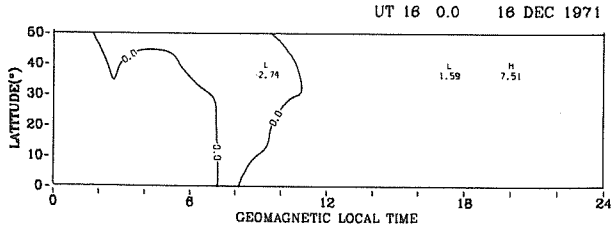
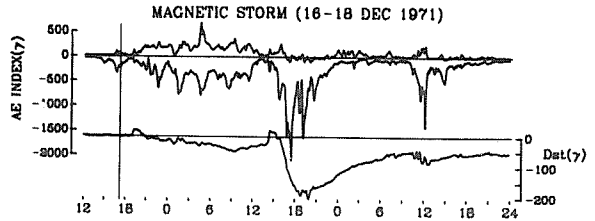
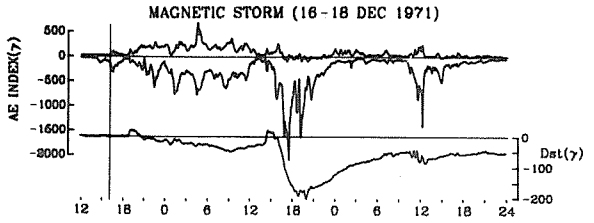
The 10-minute Plots

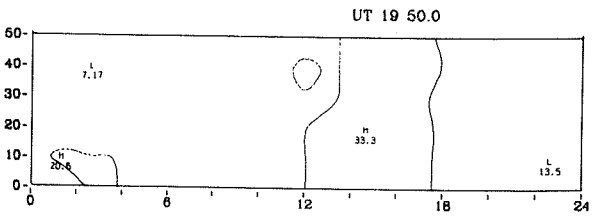
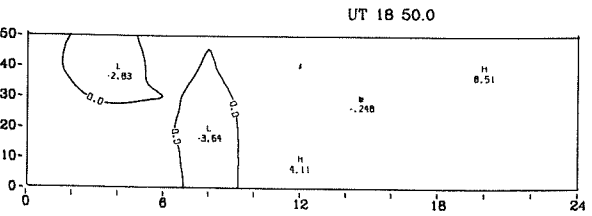
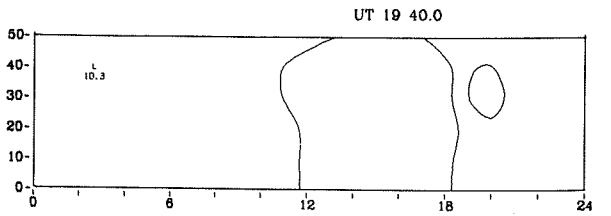
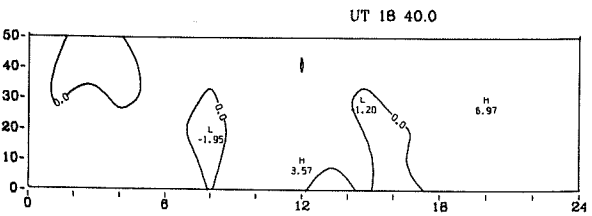
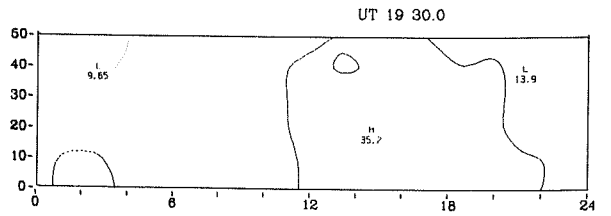
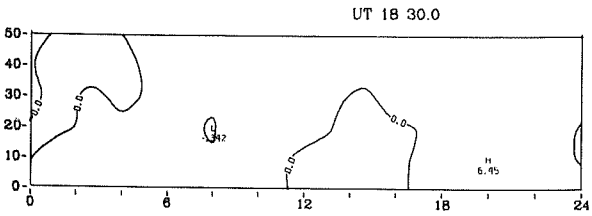
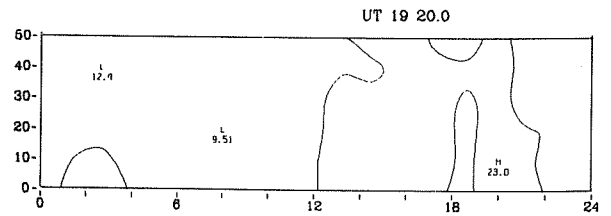
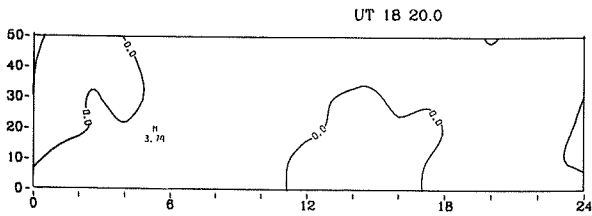
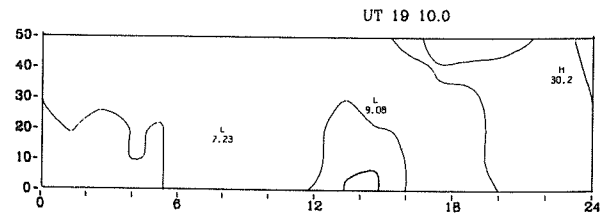
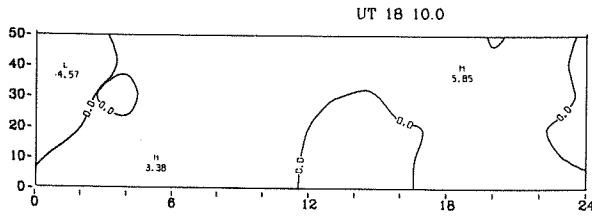
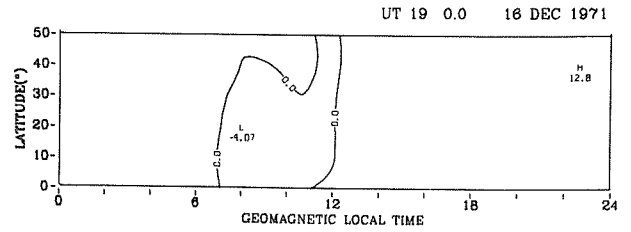
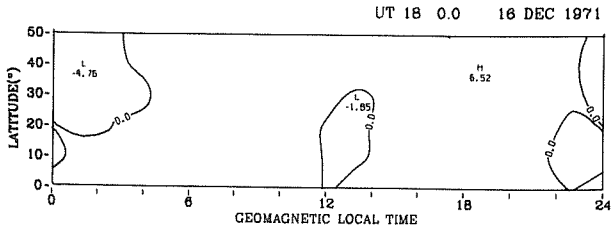
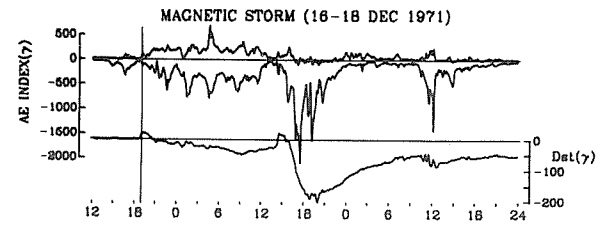
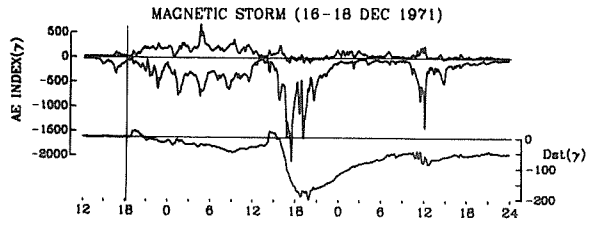
The iso-intensity contours are shown for every 10 minutes, with plots covering two hours on each page. At the top of each page the AU(11) and AL(11) indices and the equatorial Dst index are plotted for the entire 60-hr period with the timing bar corresponding to the Universal Time of the first contour map of each hour.

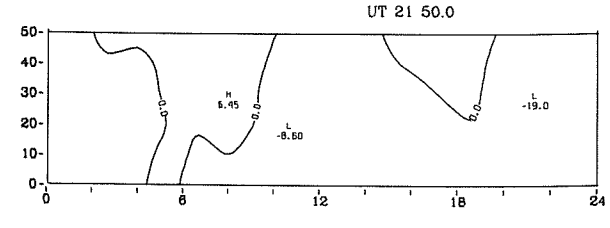
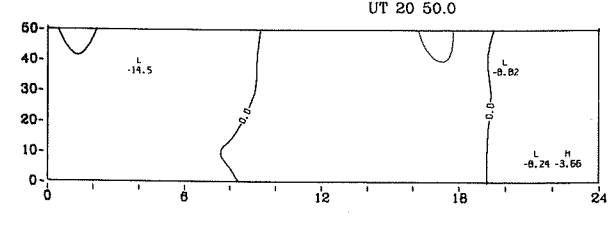
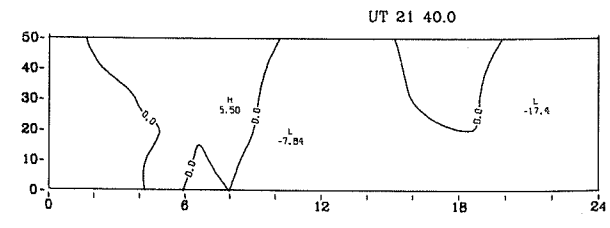
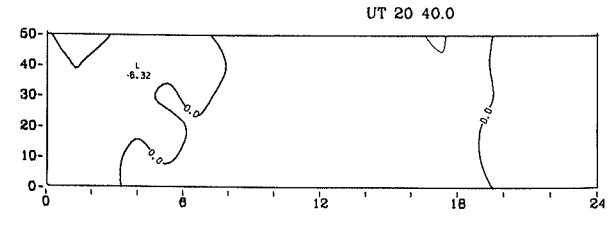
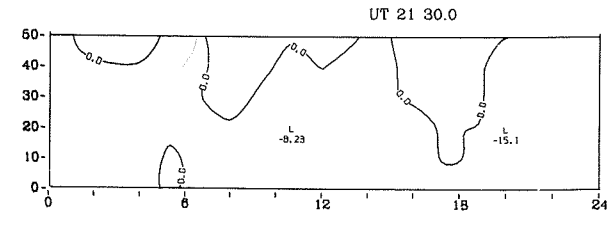
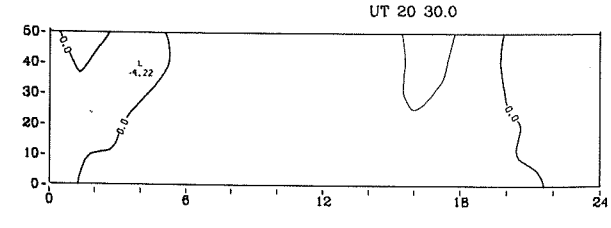
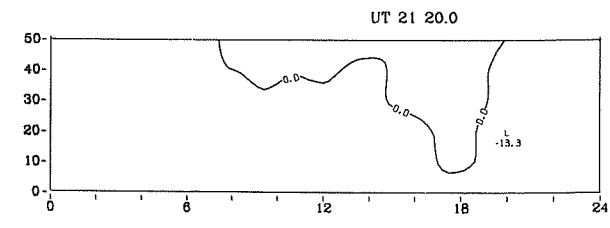
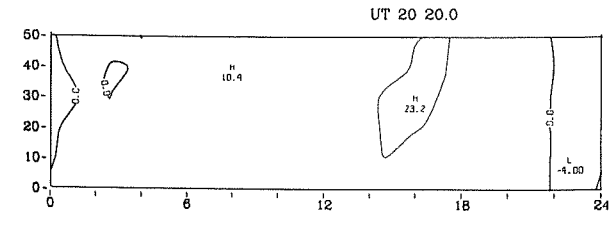
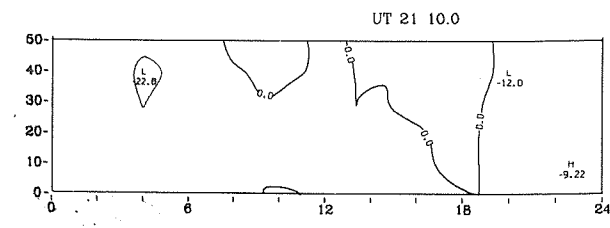
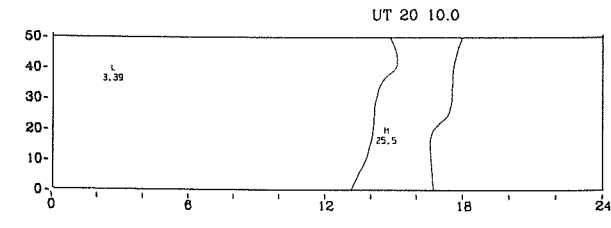
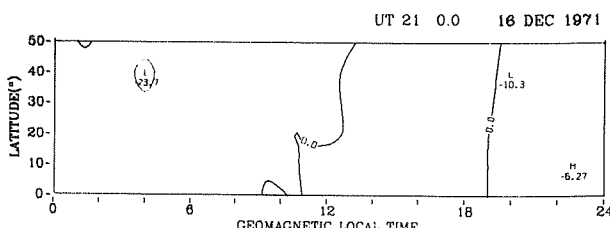
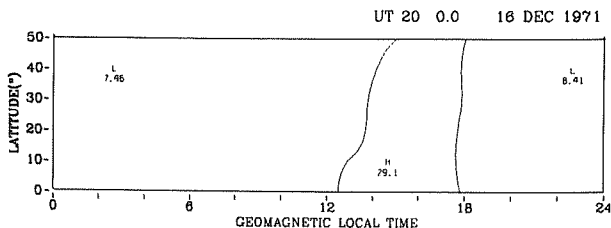
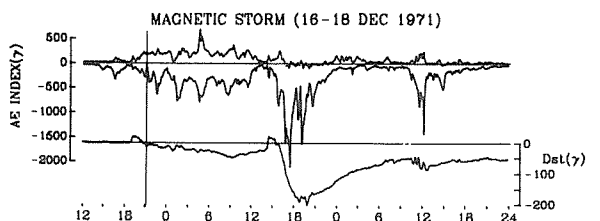
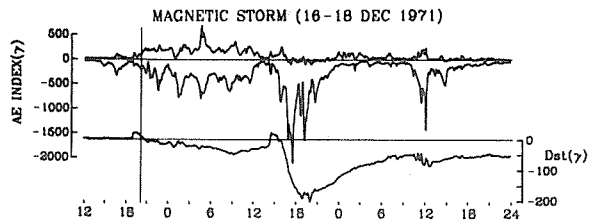
Universal Time and date are identified for each contour plot. Geomagnetic noon is fixed at the center of each contour plot, so that the earth's rotation effect is eliminated in seeing the progressive change of the contour pattern.

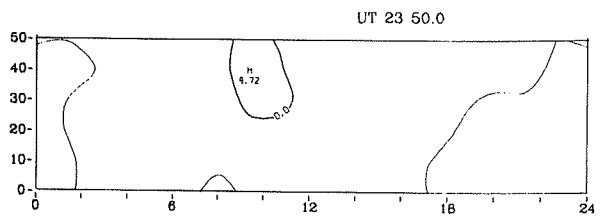
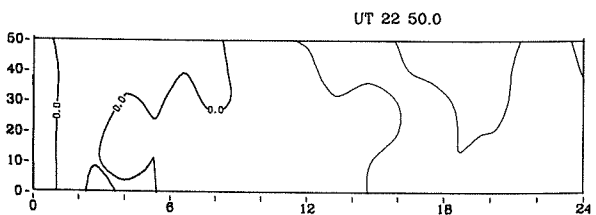
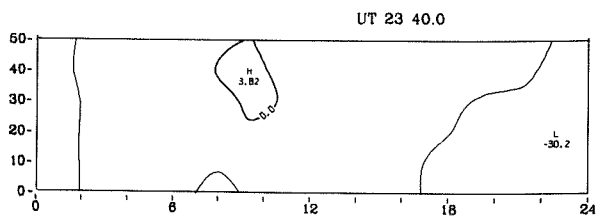
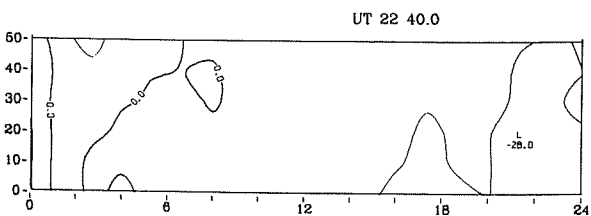
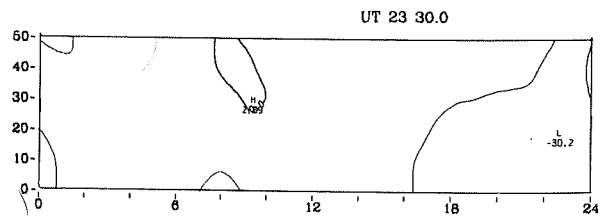
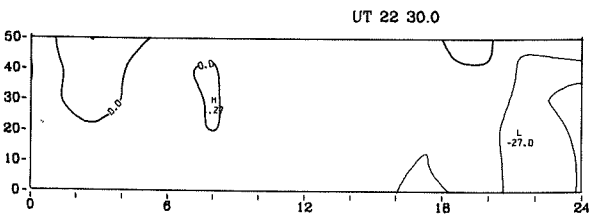
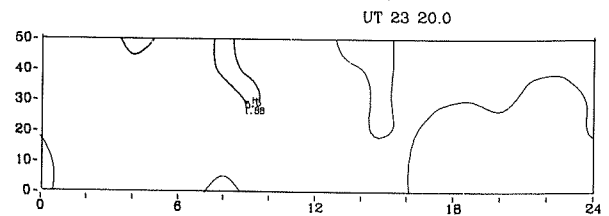
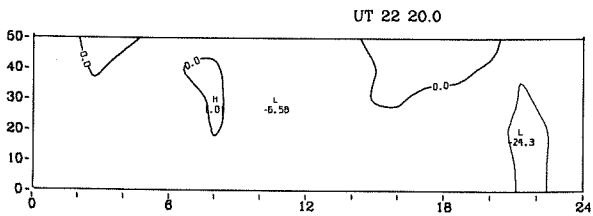
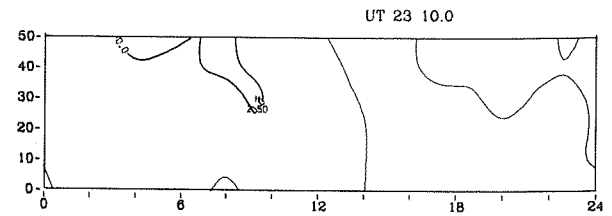
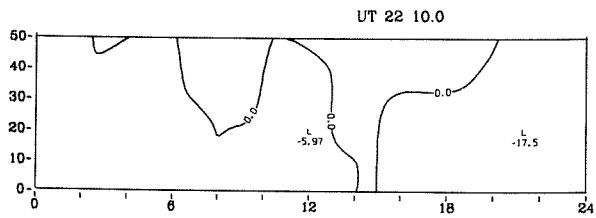
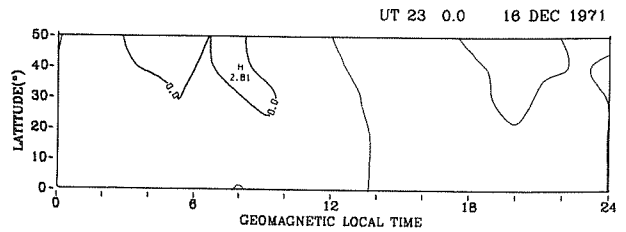
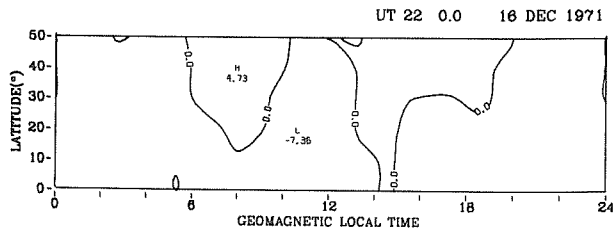
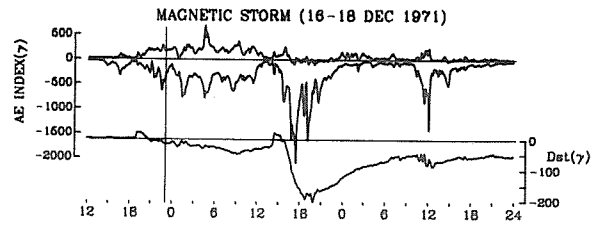
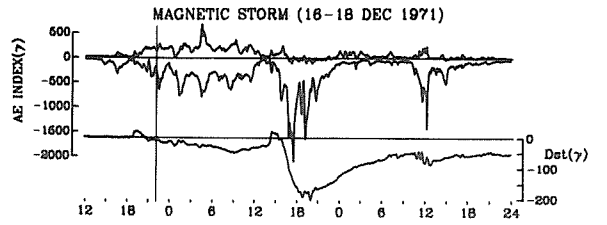


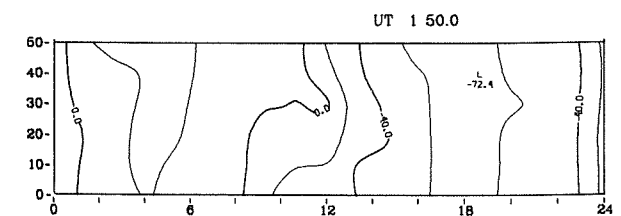
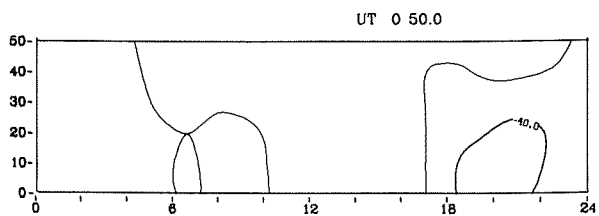
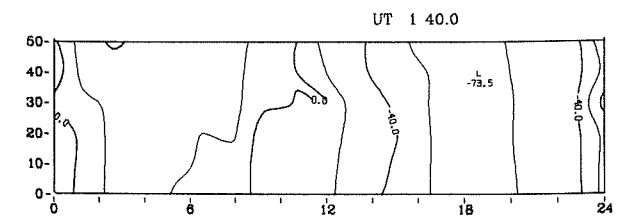
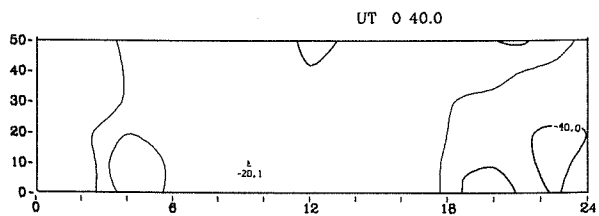
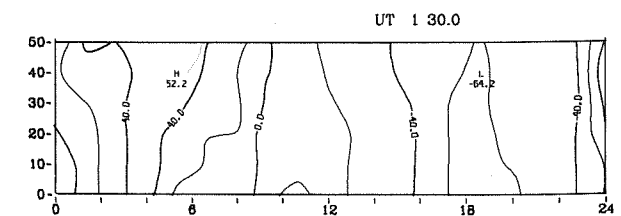
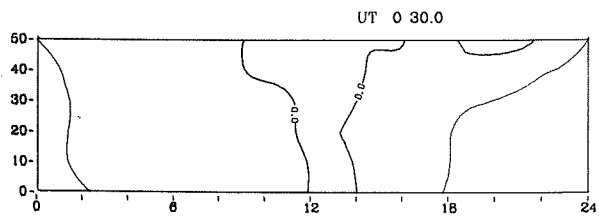
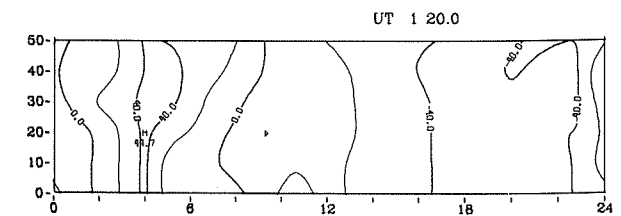
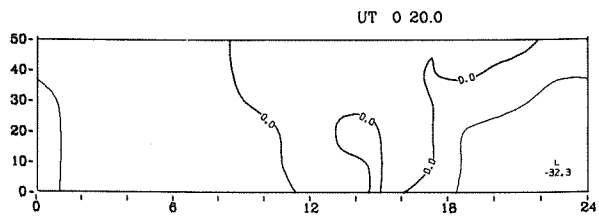
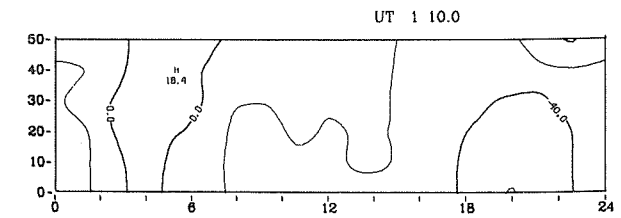
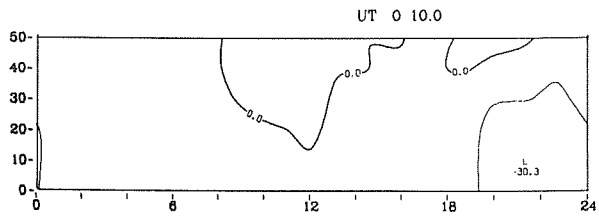
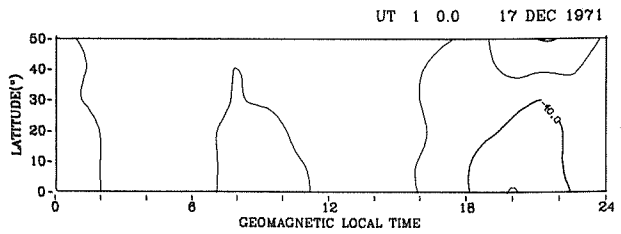
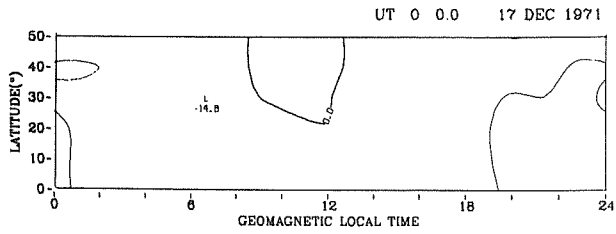
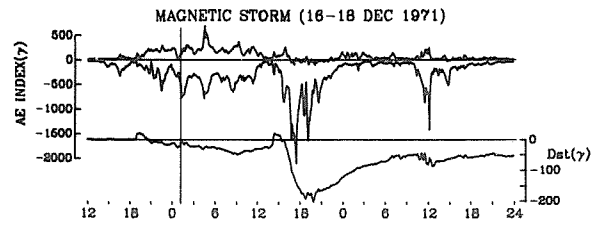
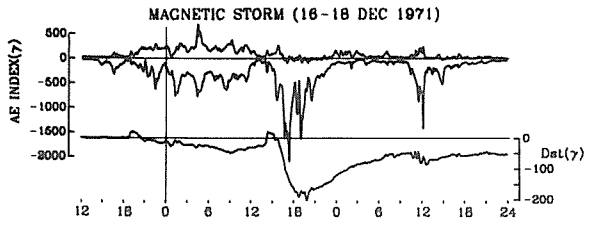


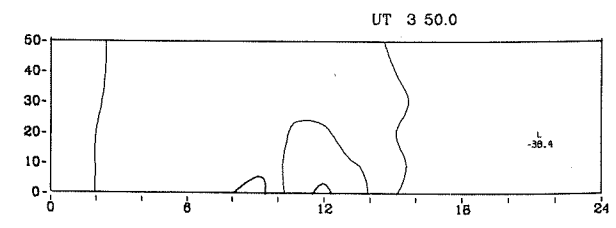
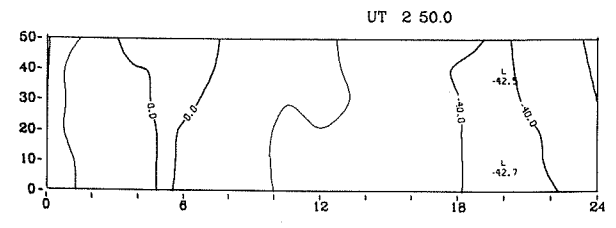
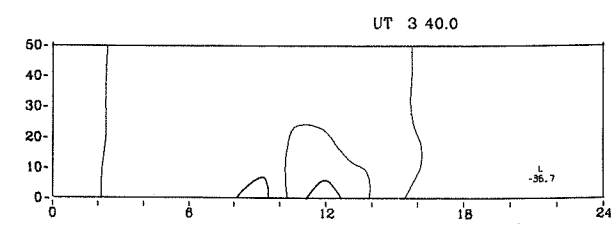
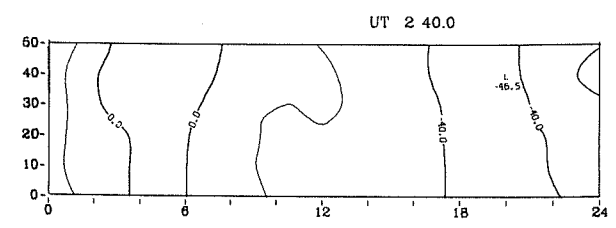
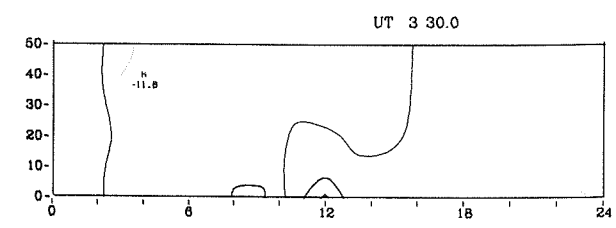
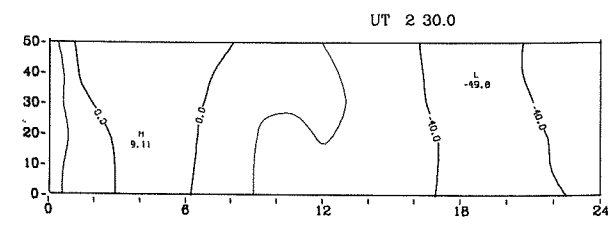
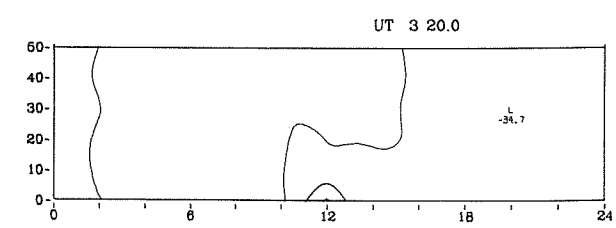
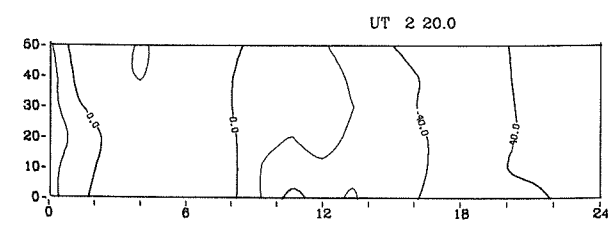
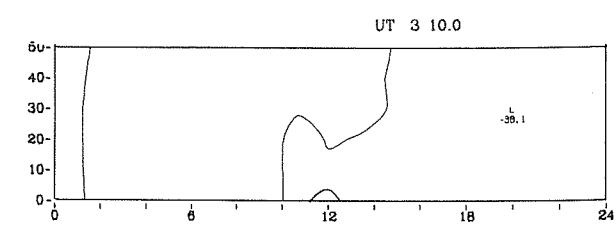
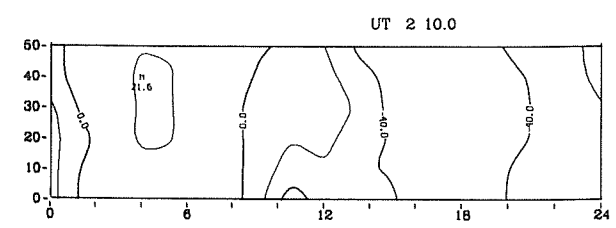
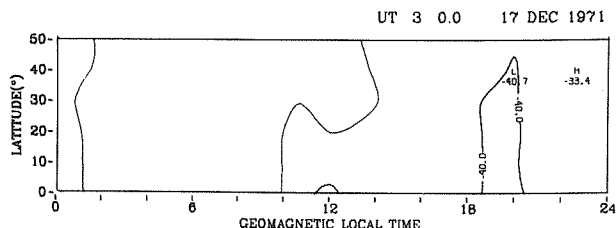
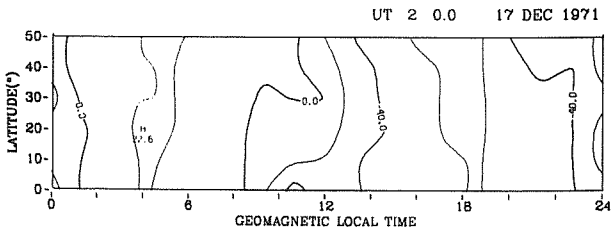
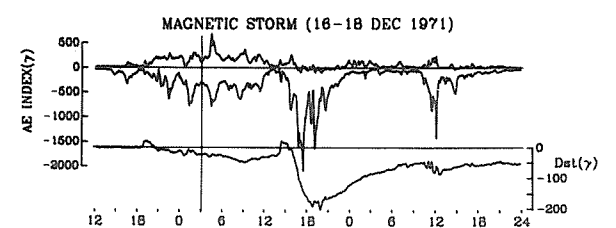
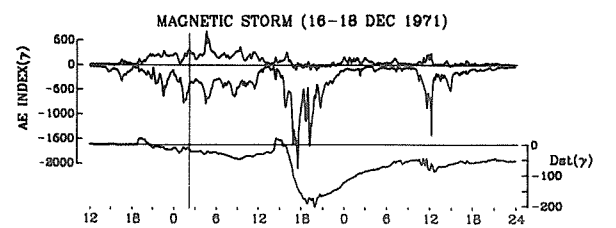


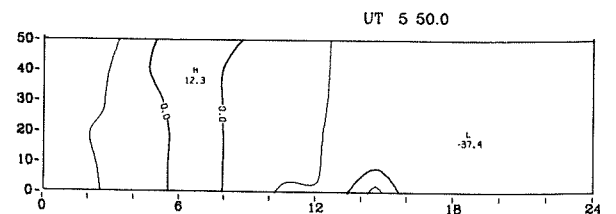
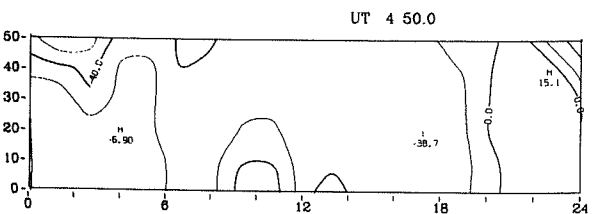
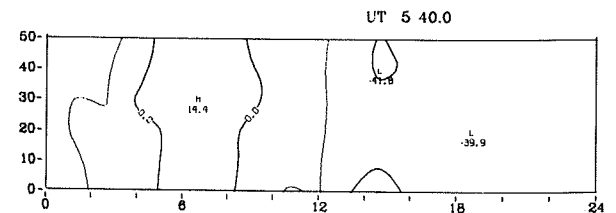
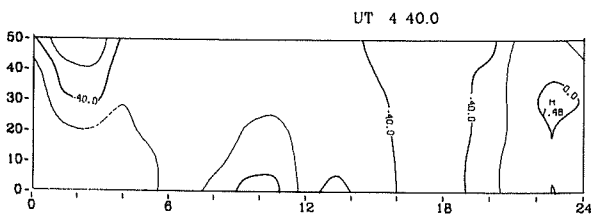
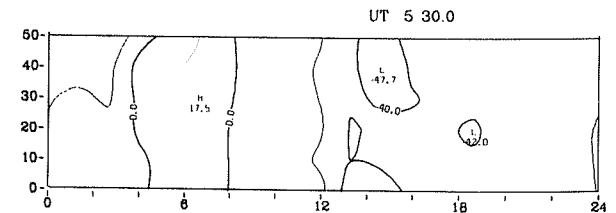
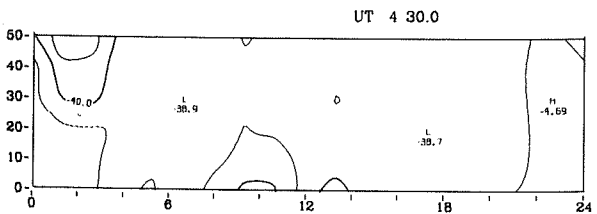
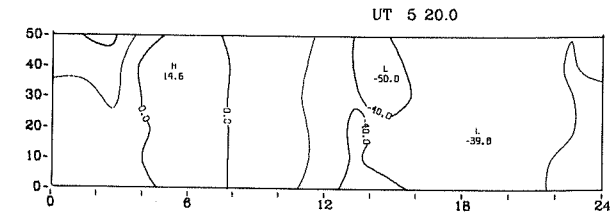
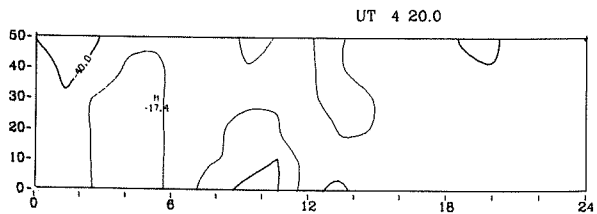
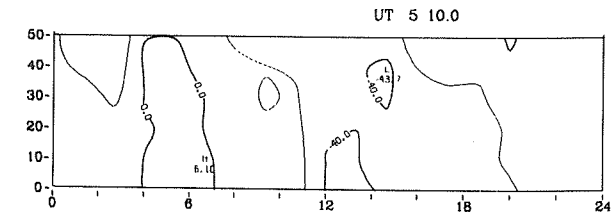
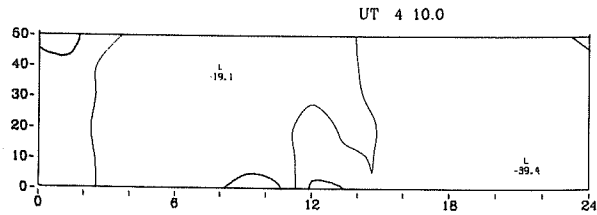
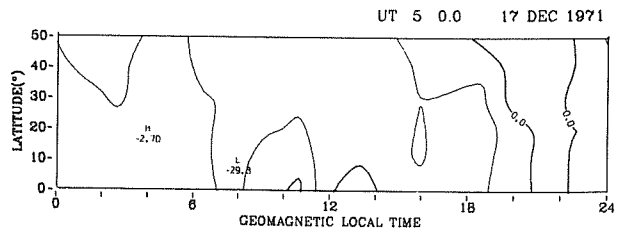
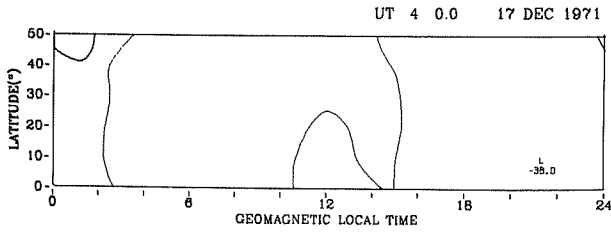
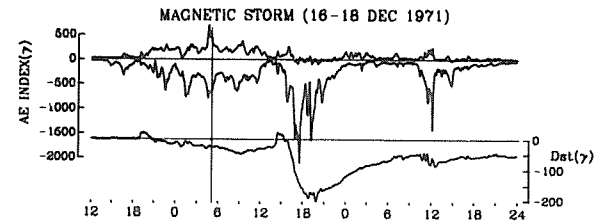
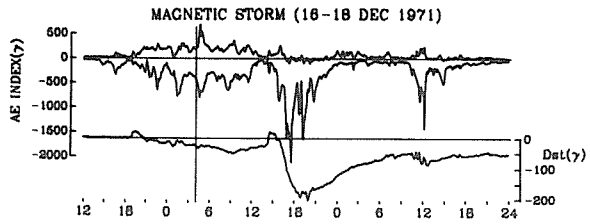


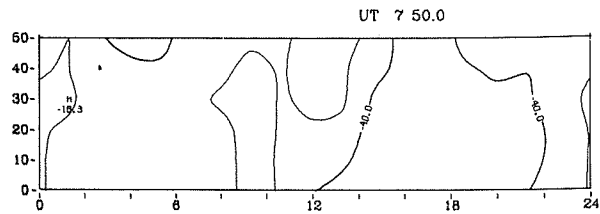
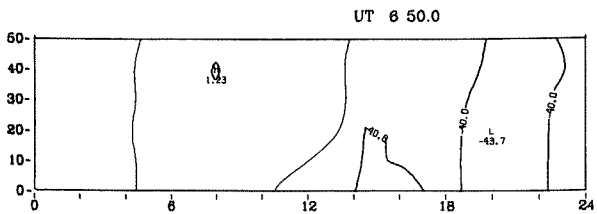
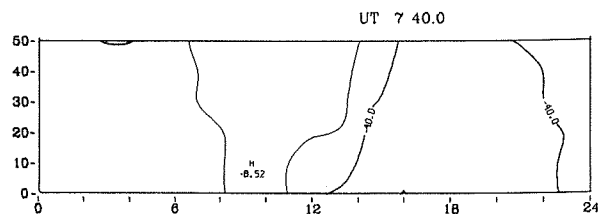
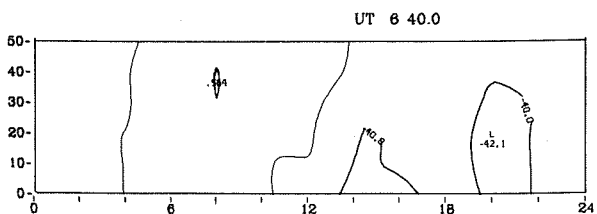
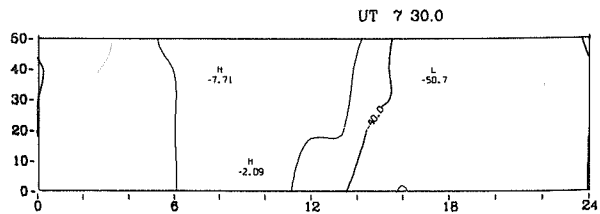
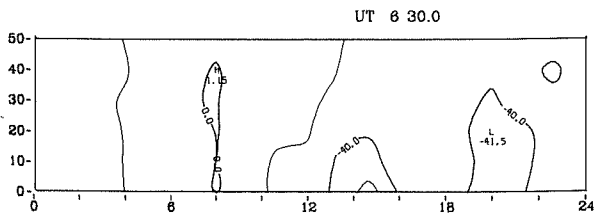
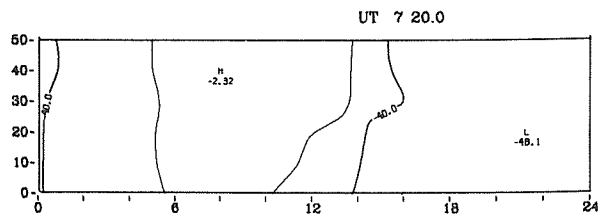
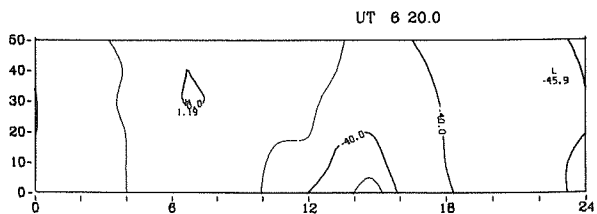
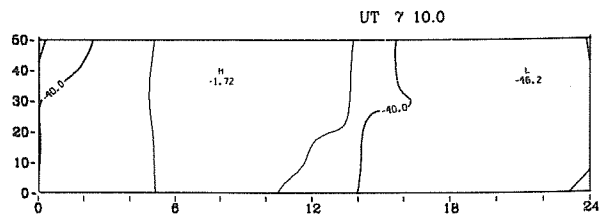
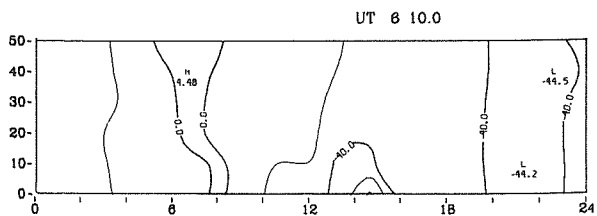
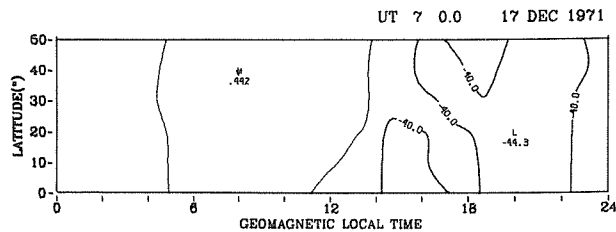
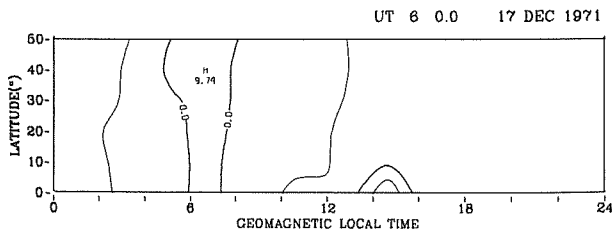
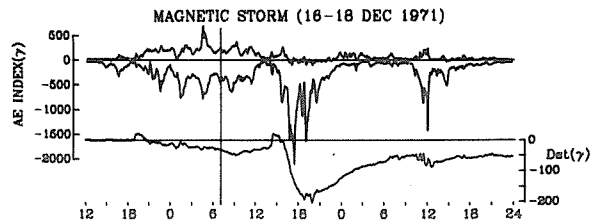
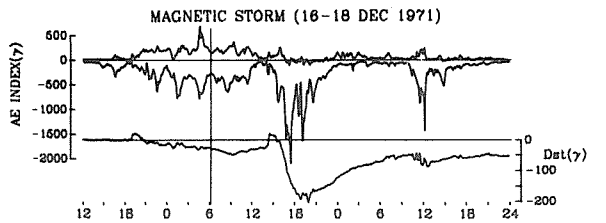


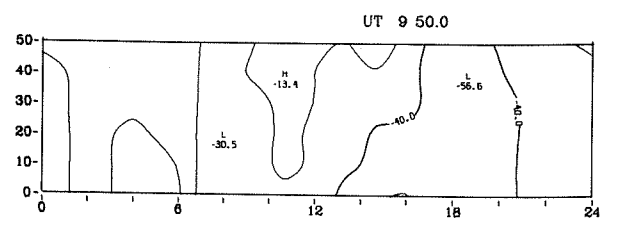
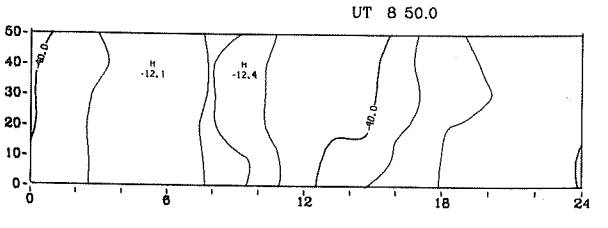
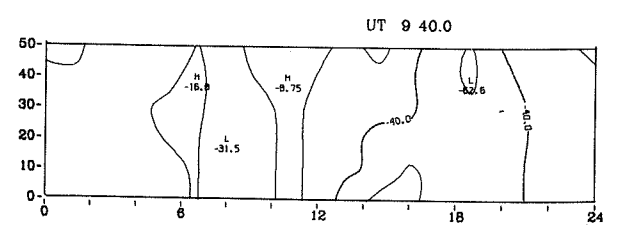
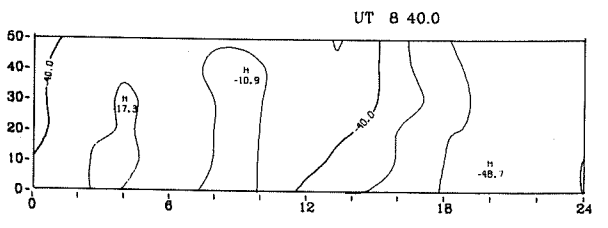
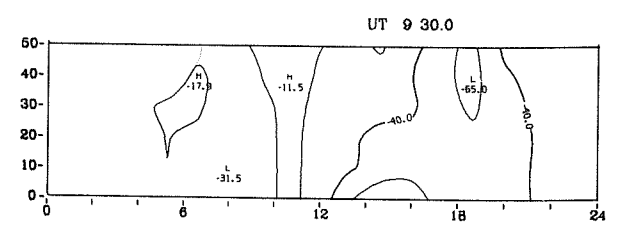
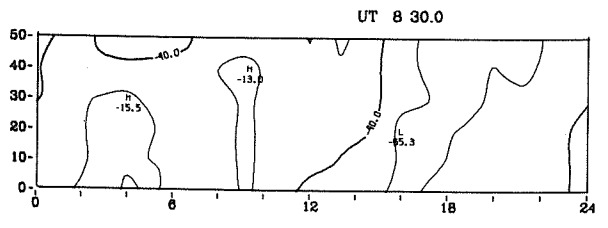
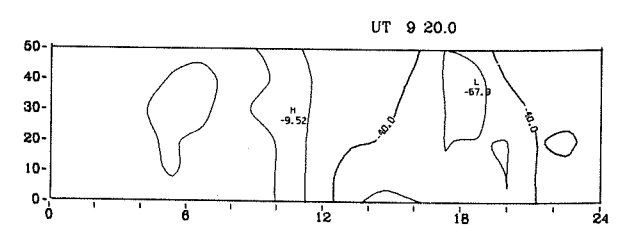
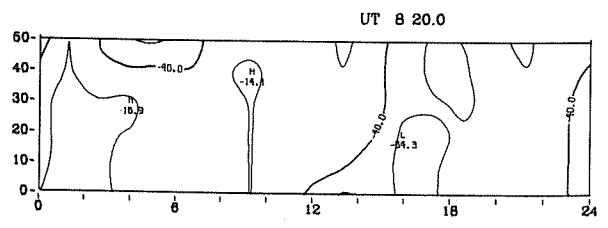
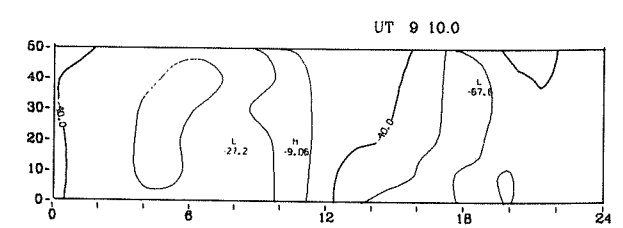
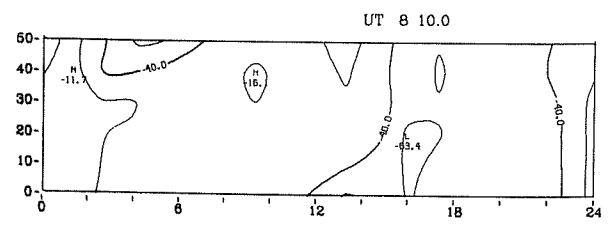
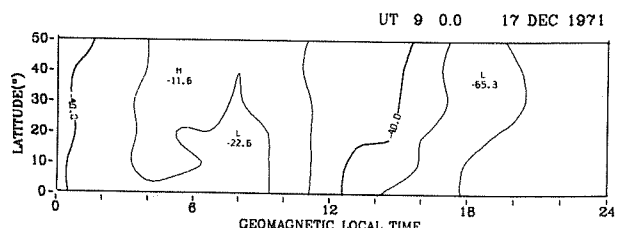
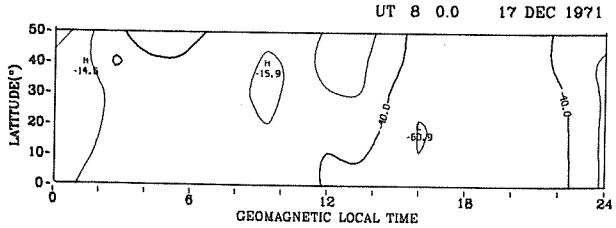
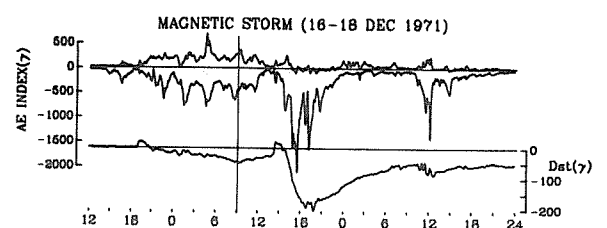
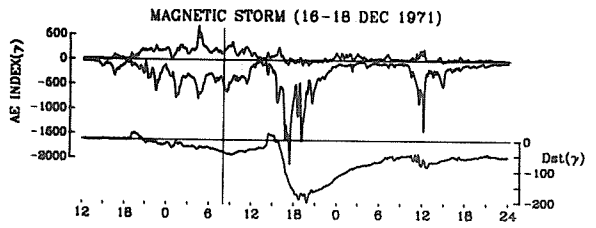


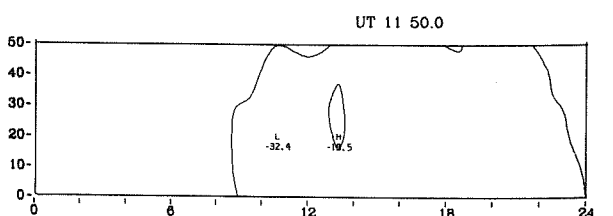
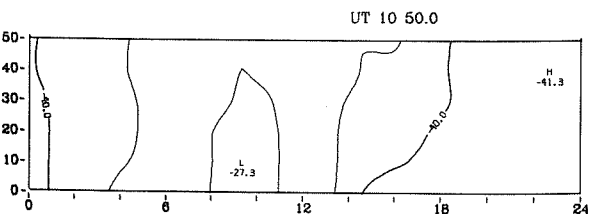
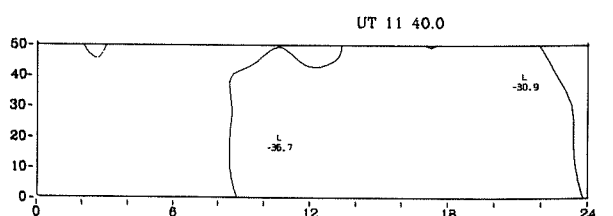
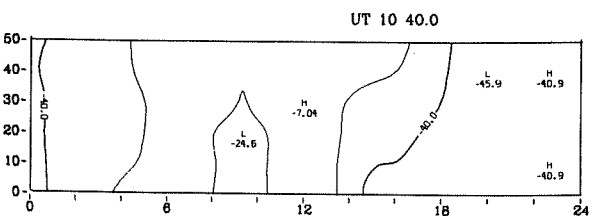
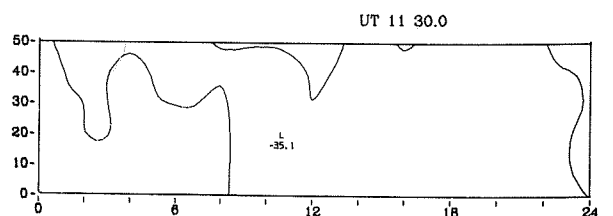
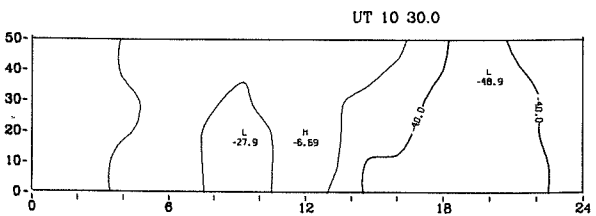
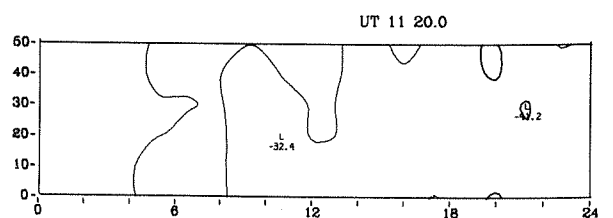
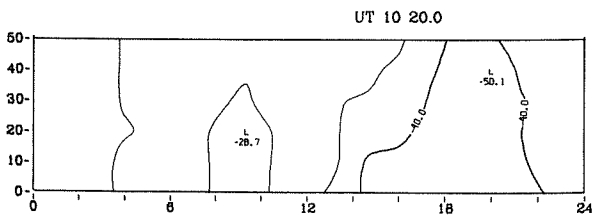
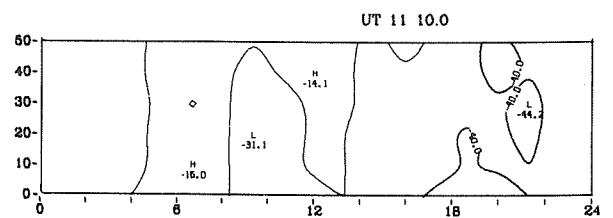
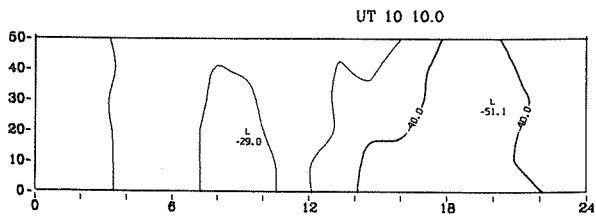
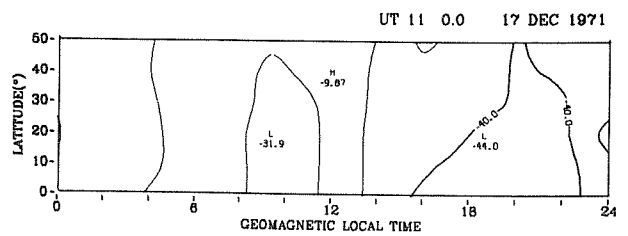
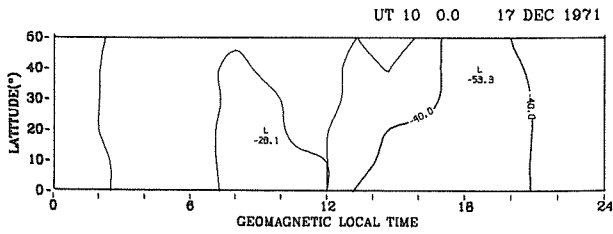
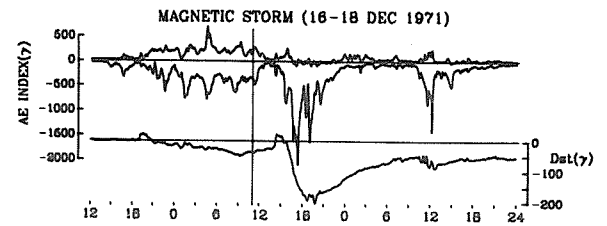
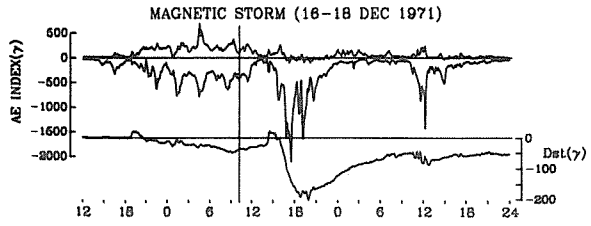


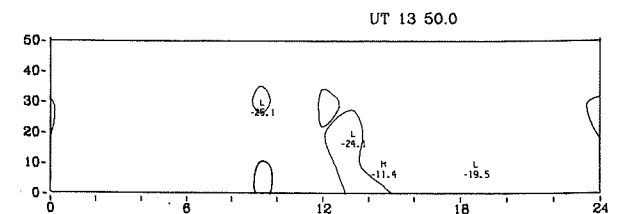
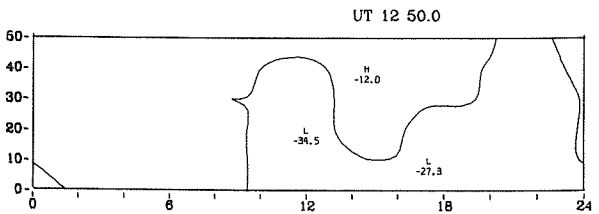
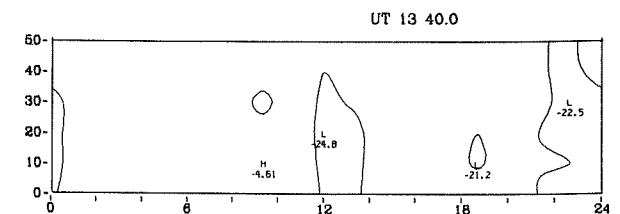
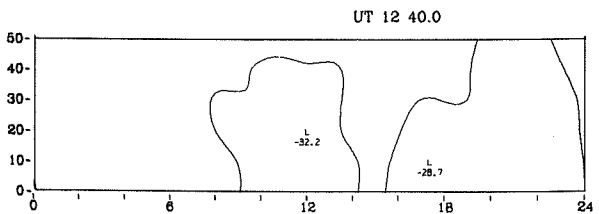
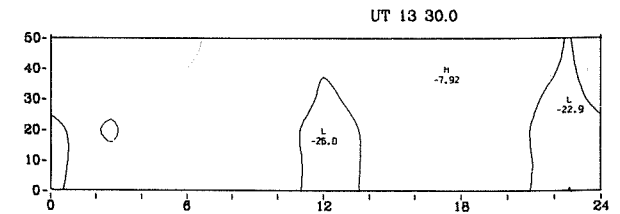
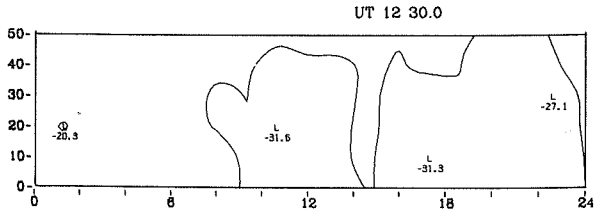
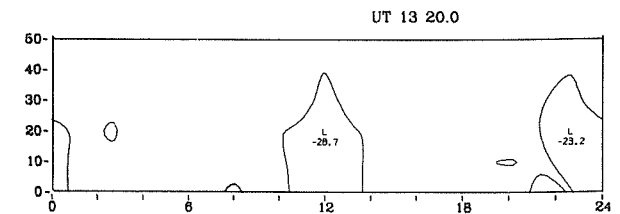
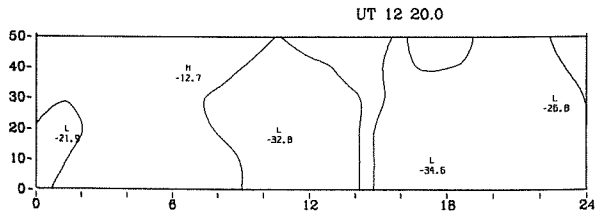
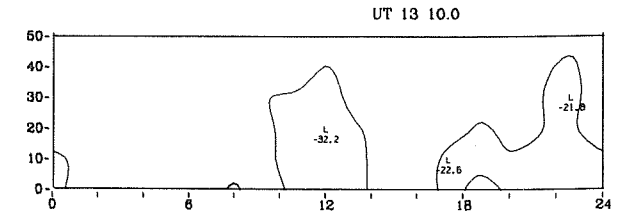
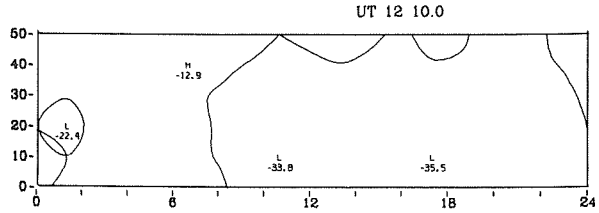
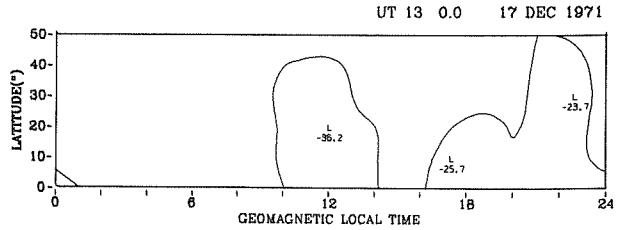
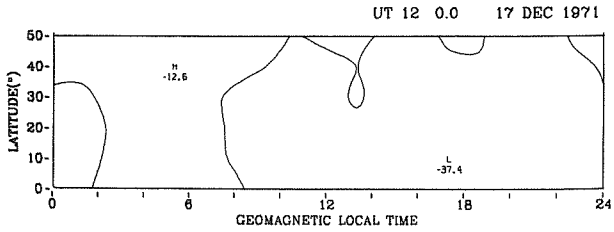
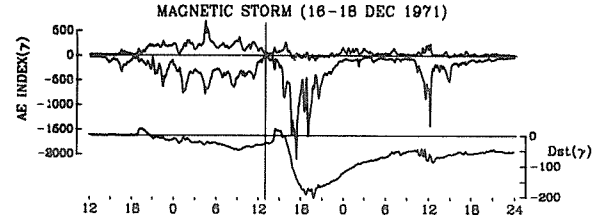
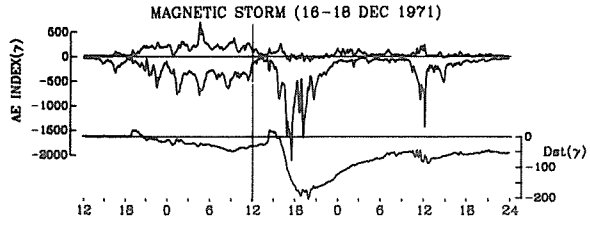


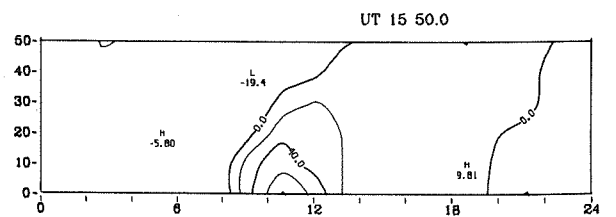
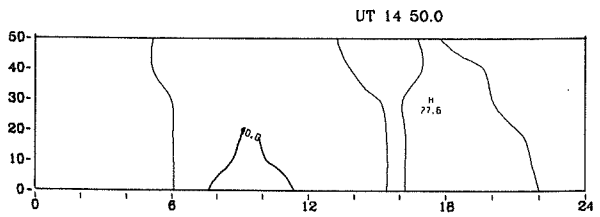
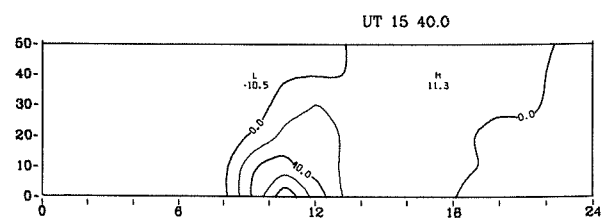
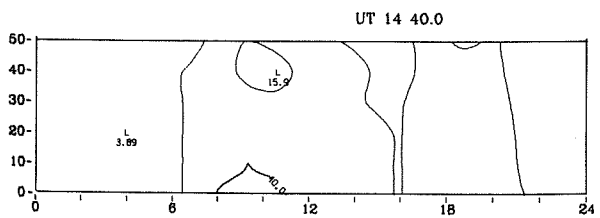
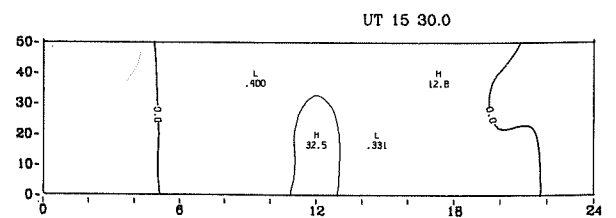
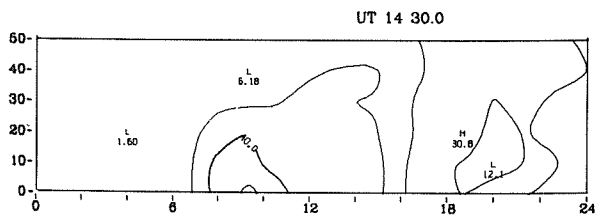
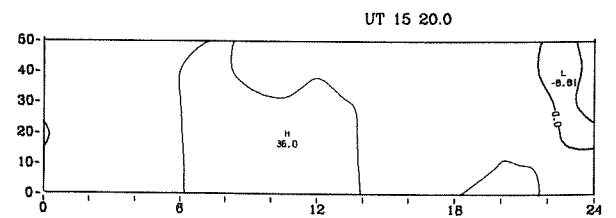
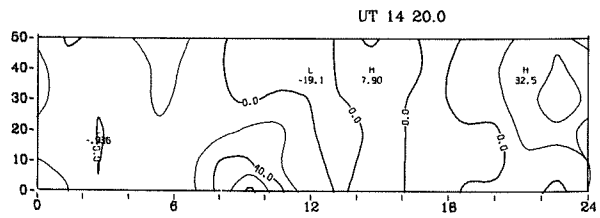
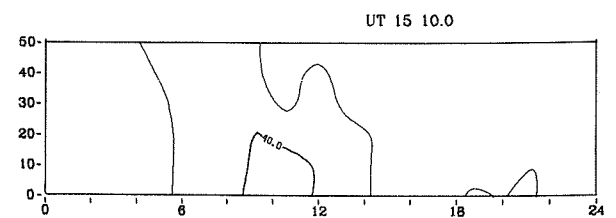
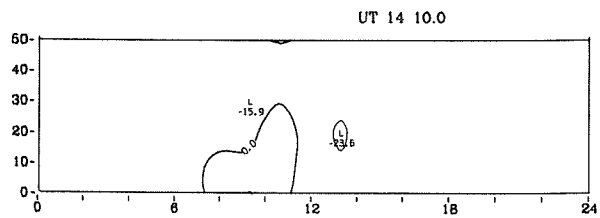
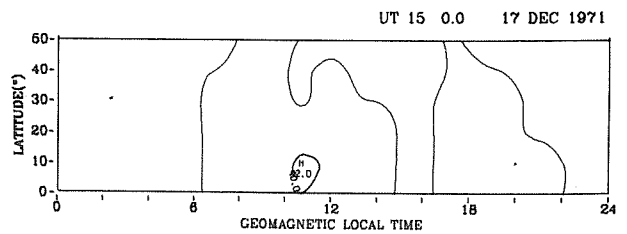
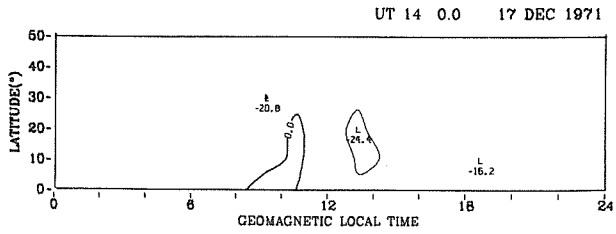
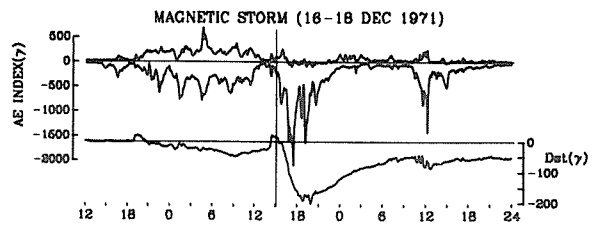
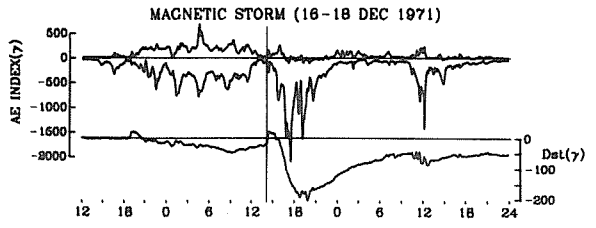


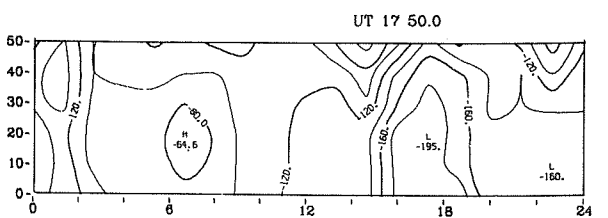
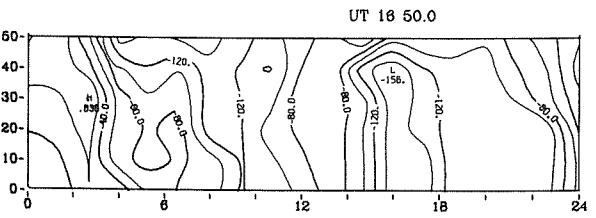
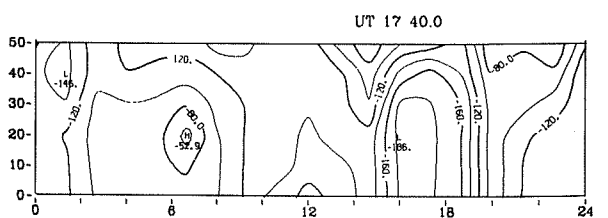
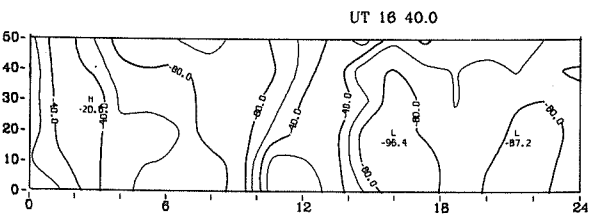
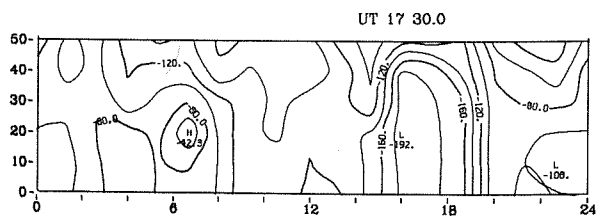
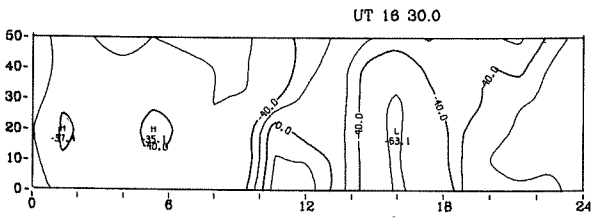
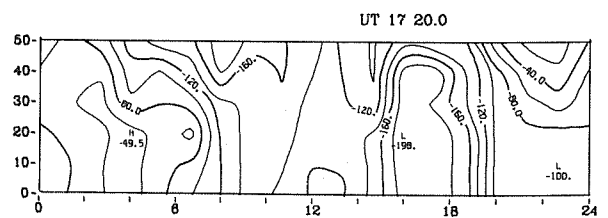
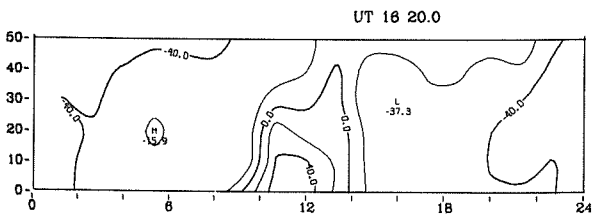
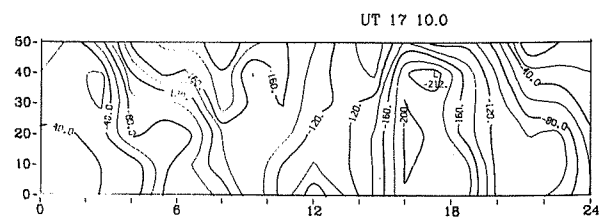
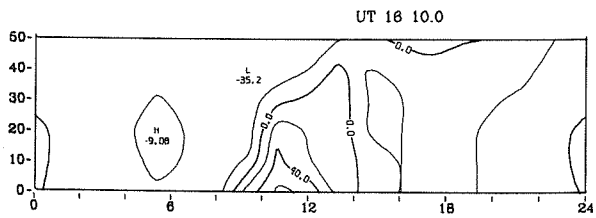
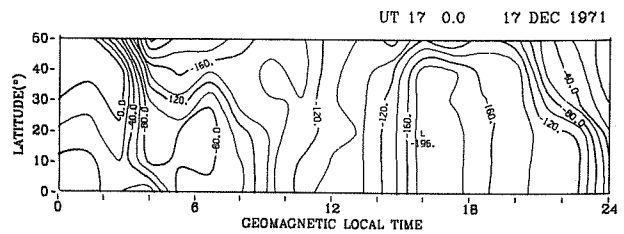
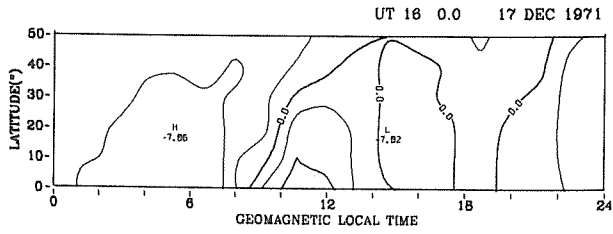
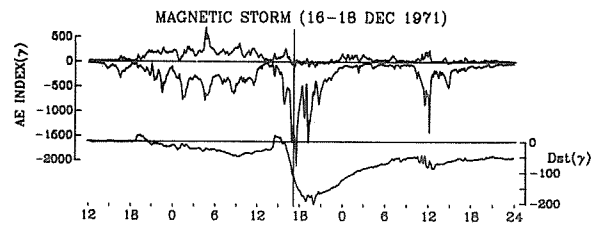
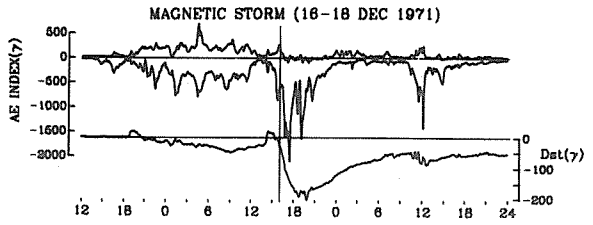


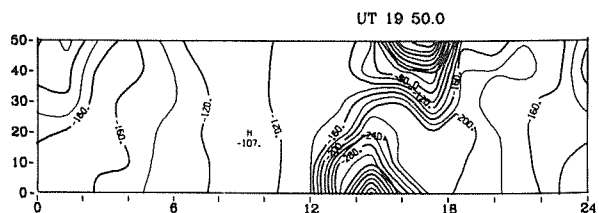
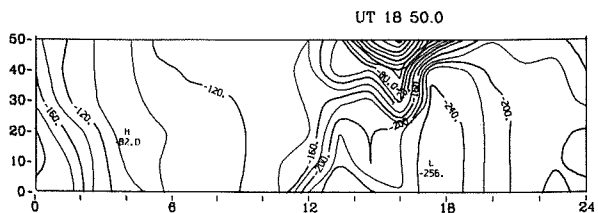
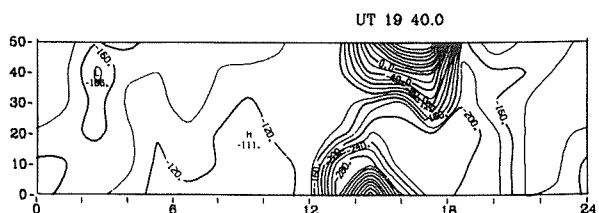
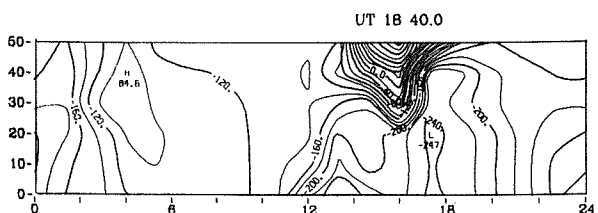
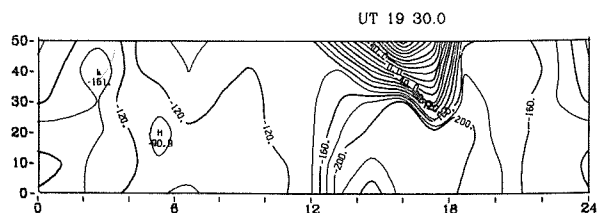
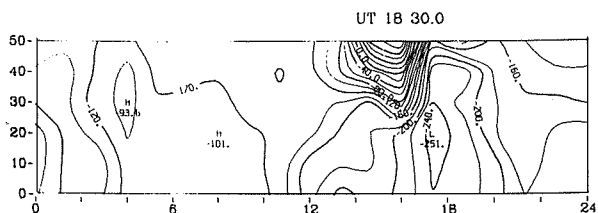
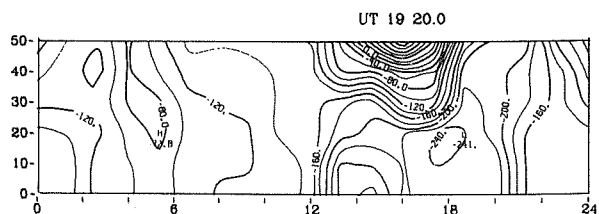
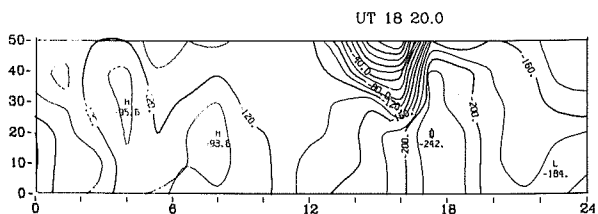
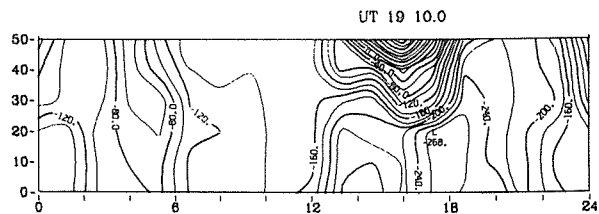
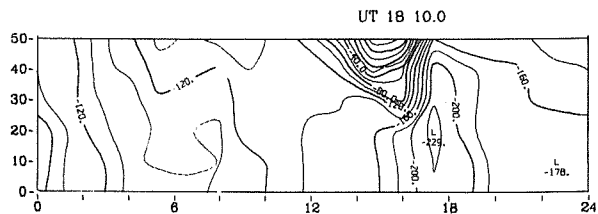
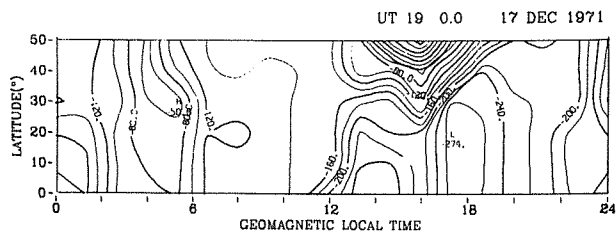
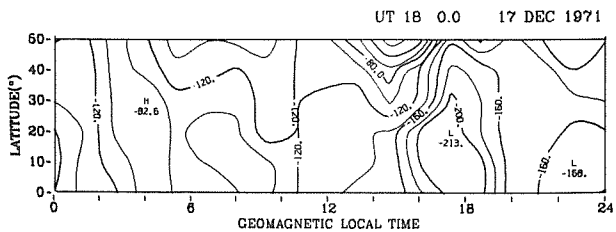
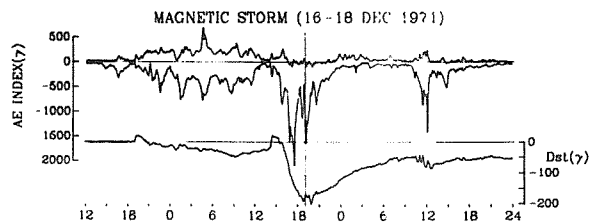
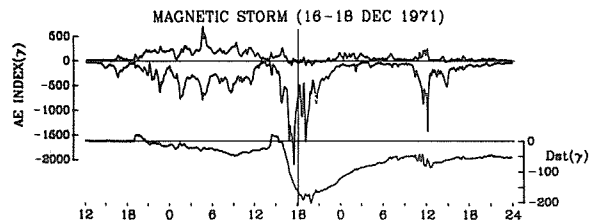


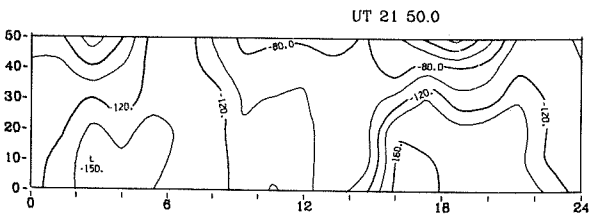
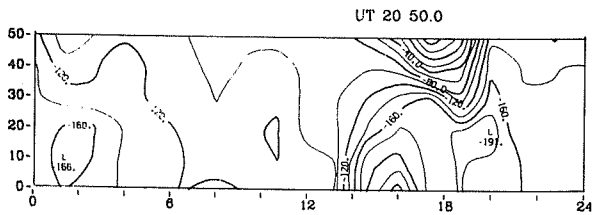
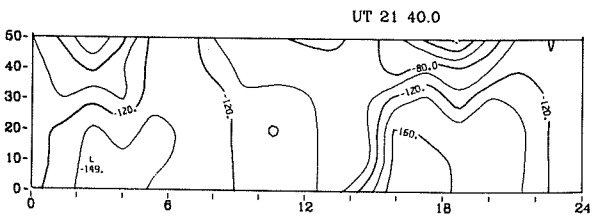
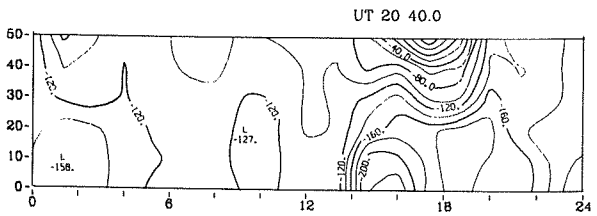
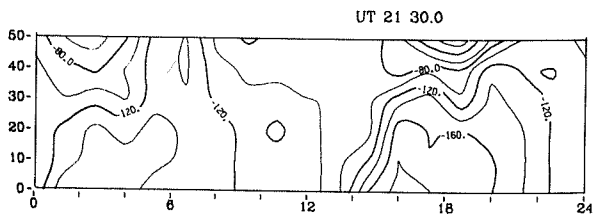
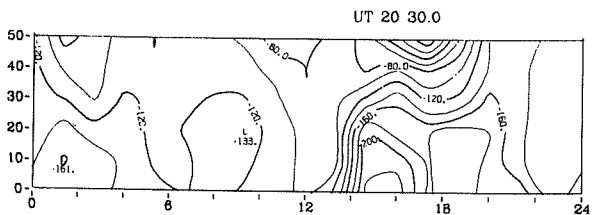
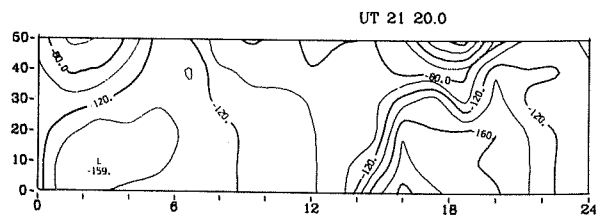
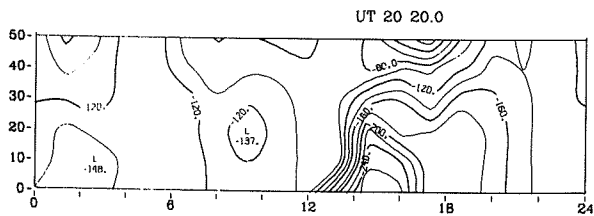
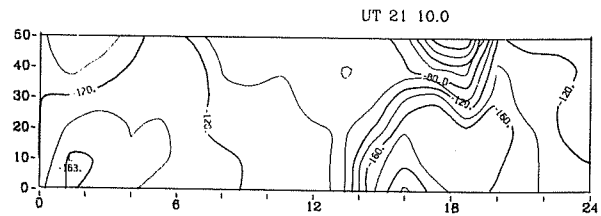
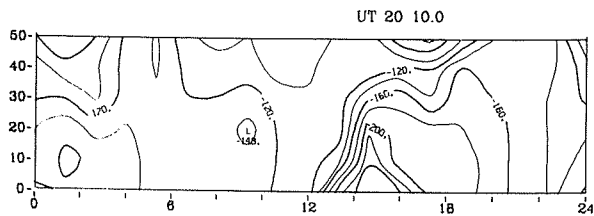
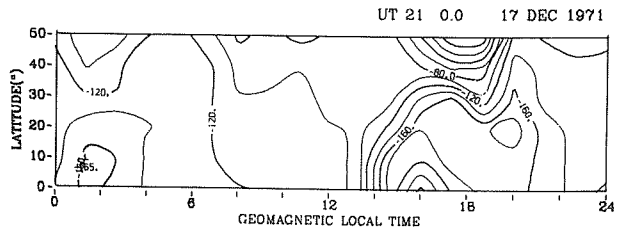
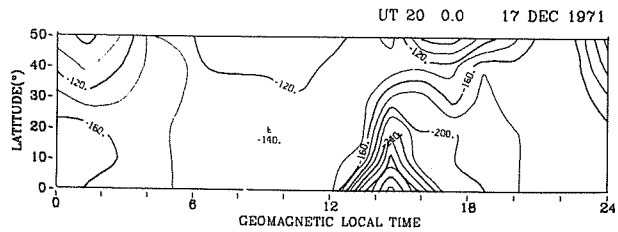
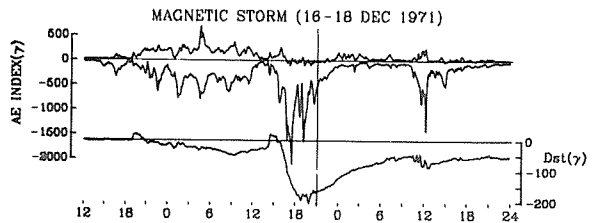
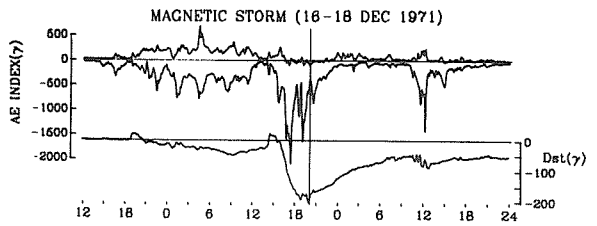


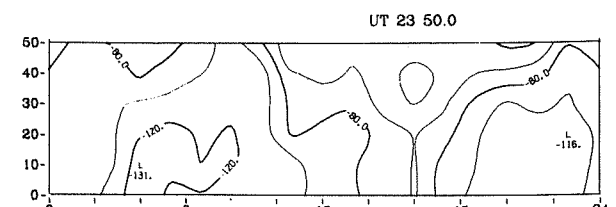
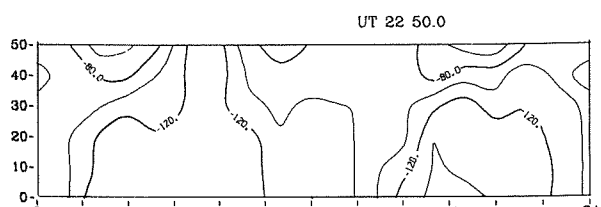
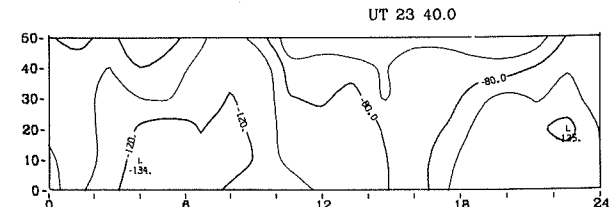
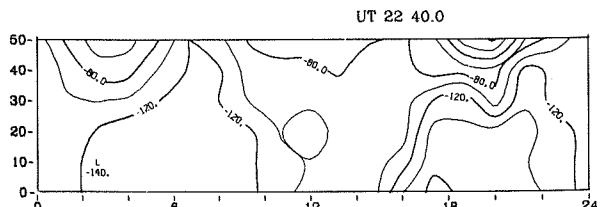
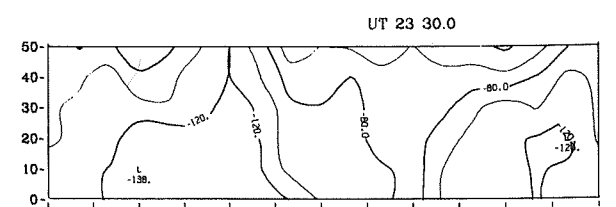
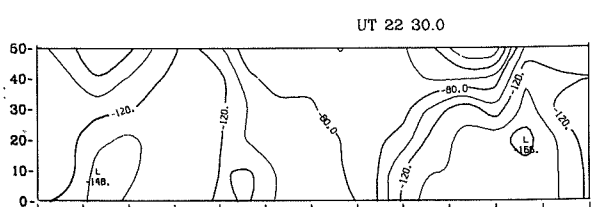
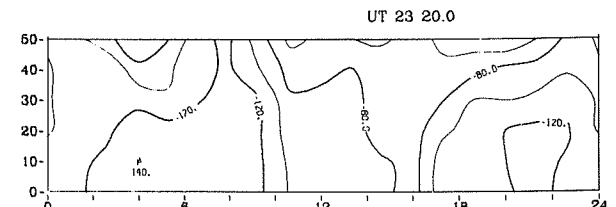
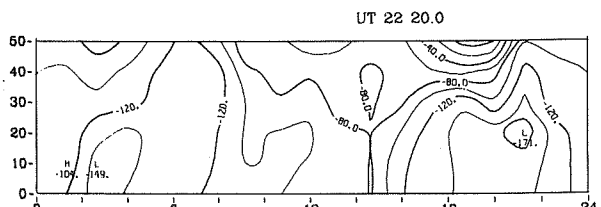
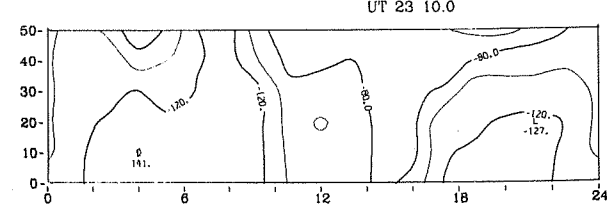
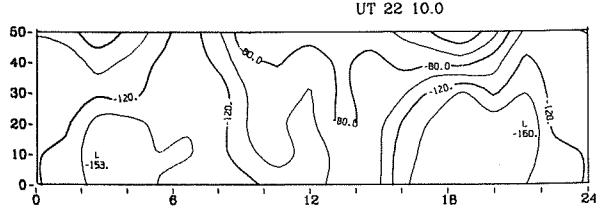
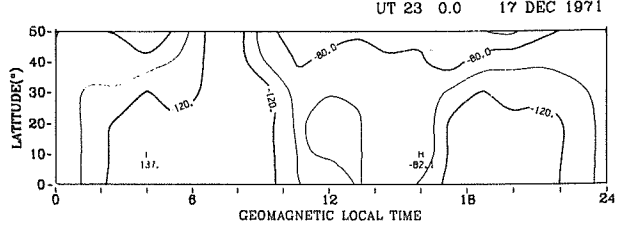
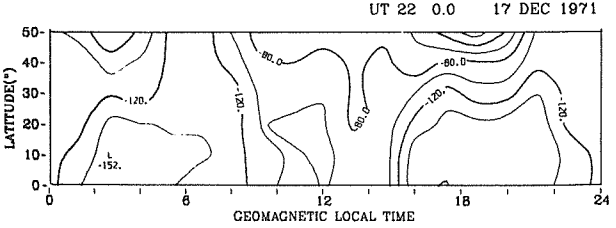
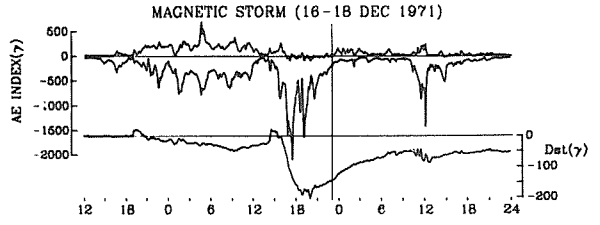
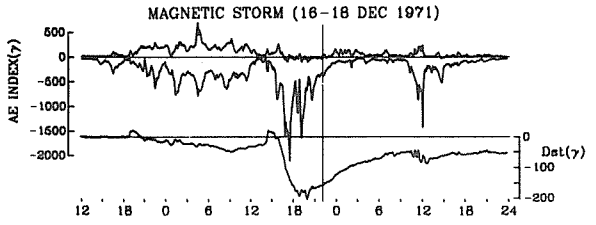


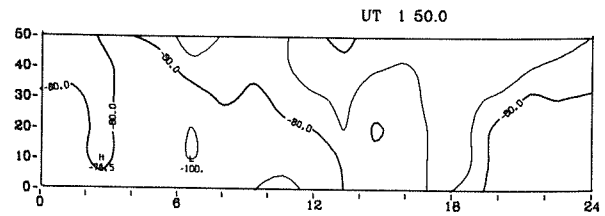
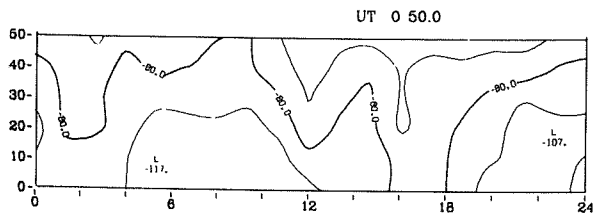
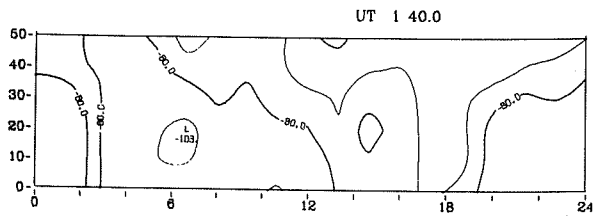
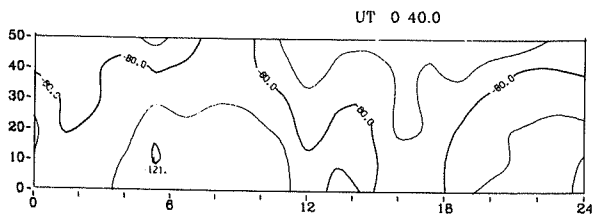
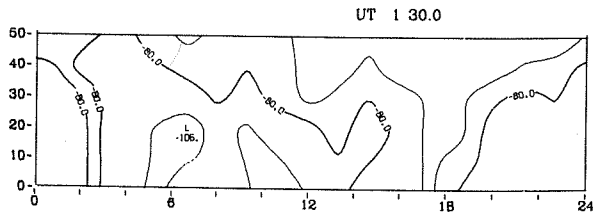
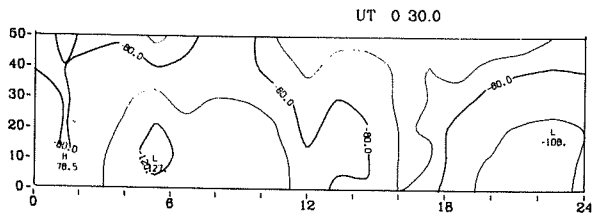
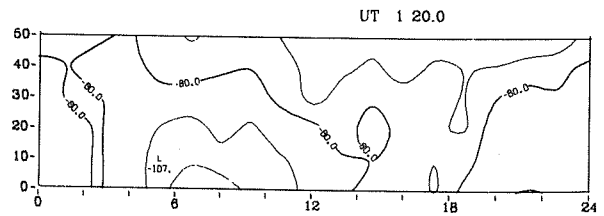
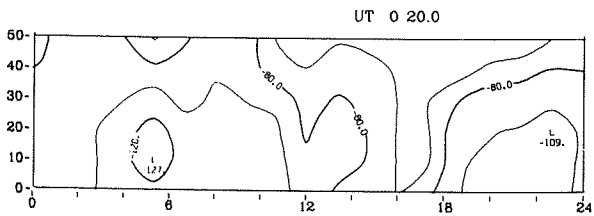
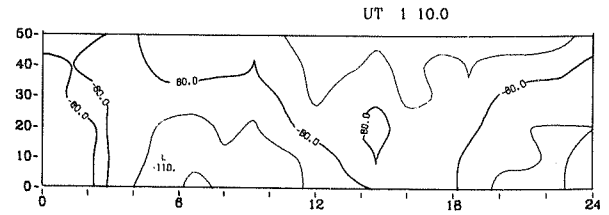
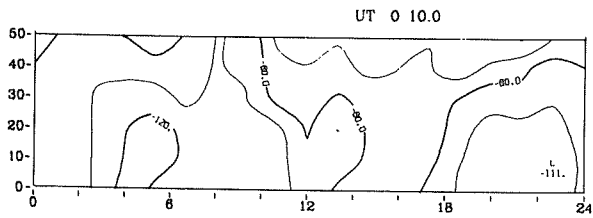
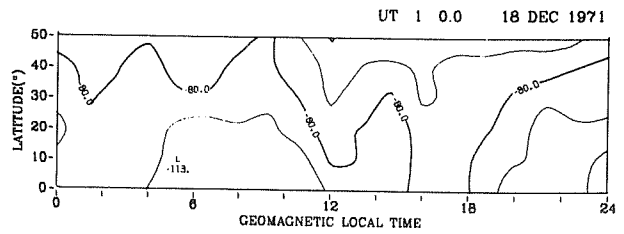
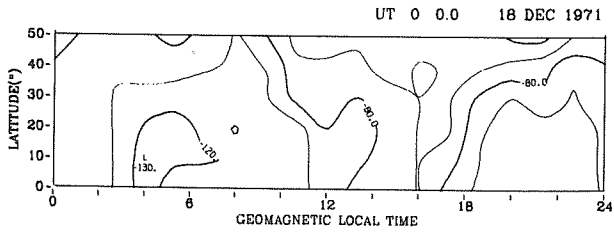
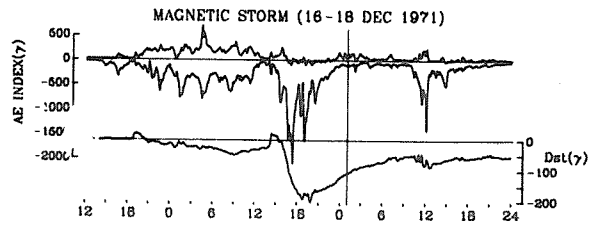
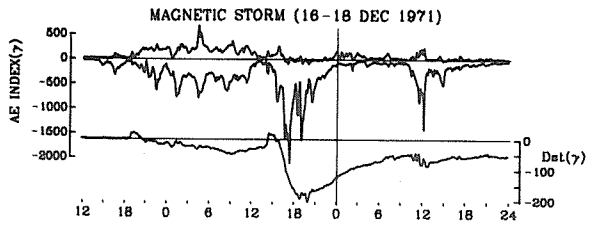


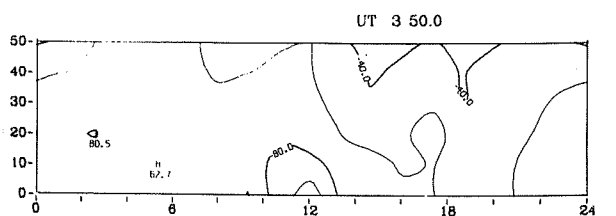
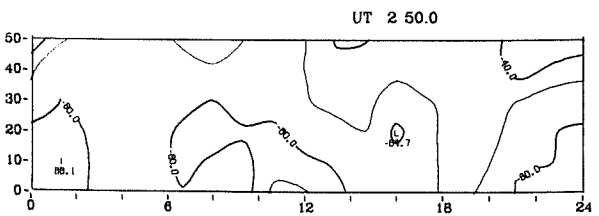
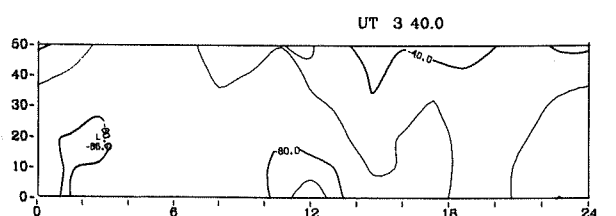
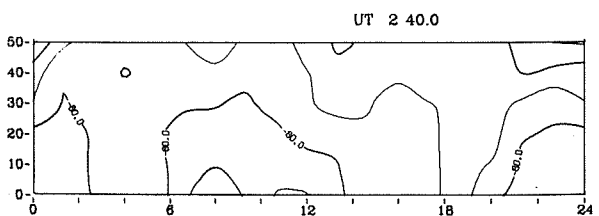
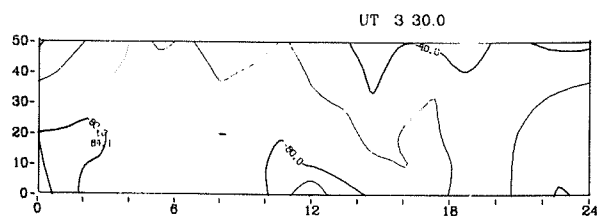
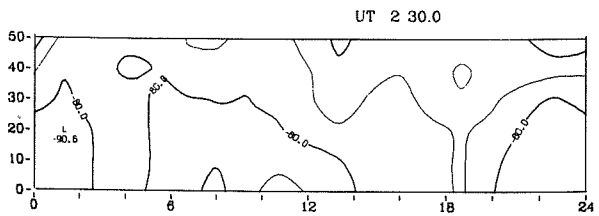
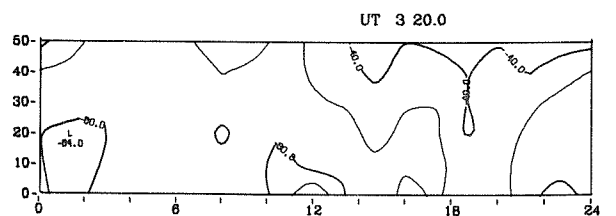
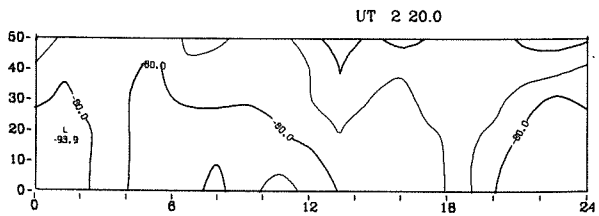
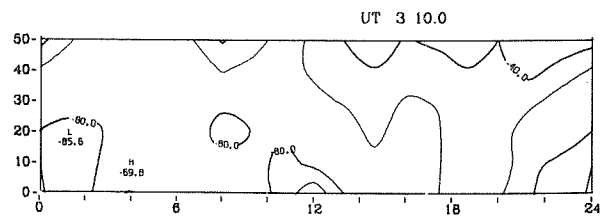
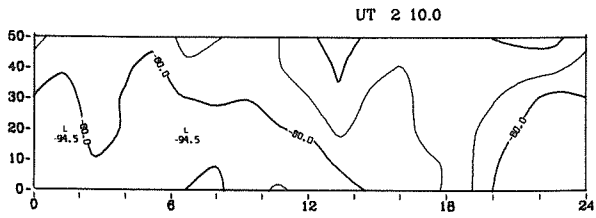
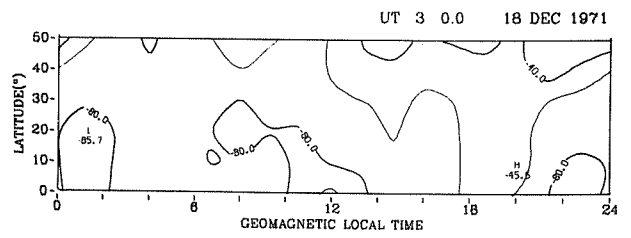
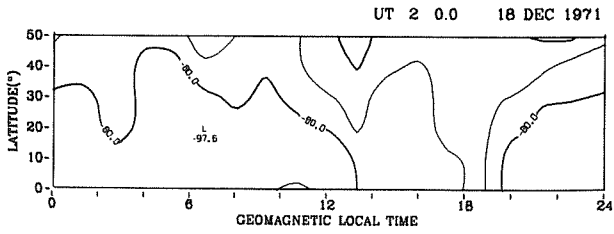
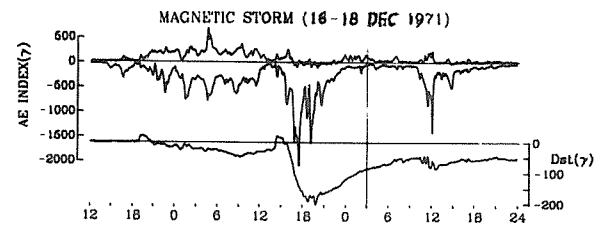
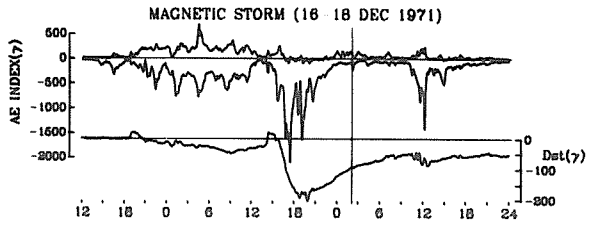


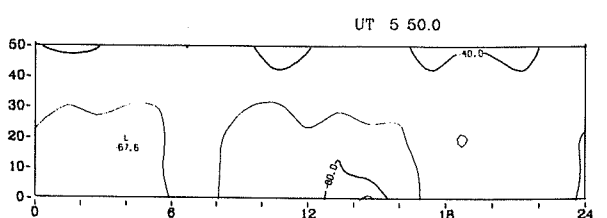
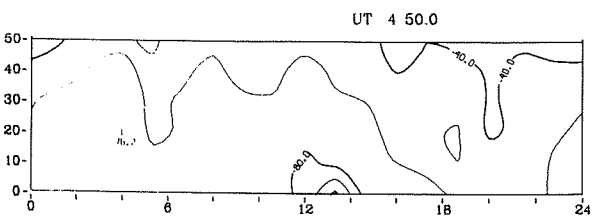
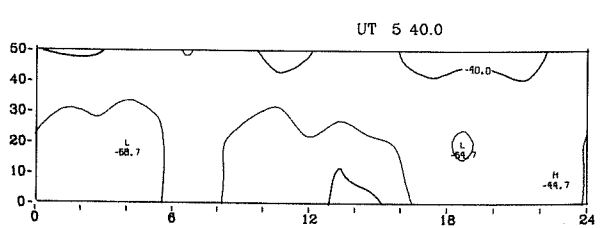
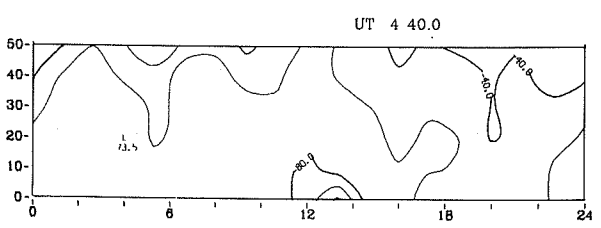
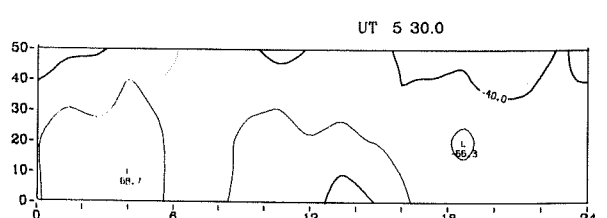
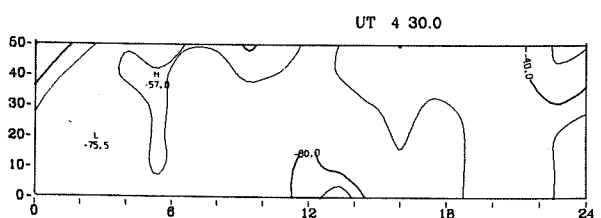
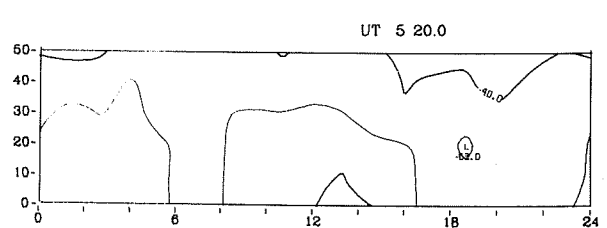
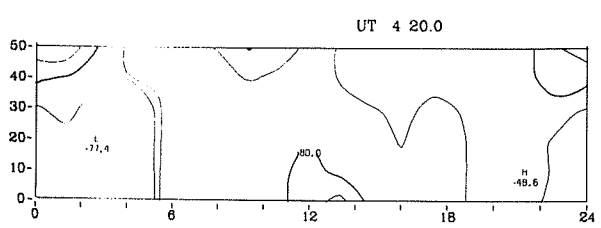
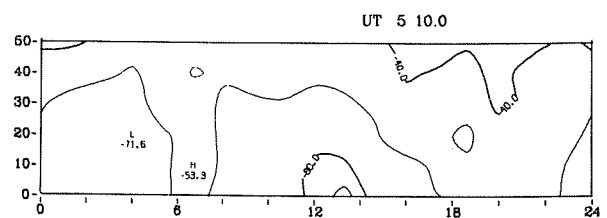
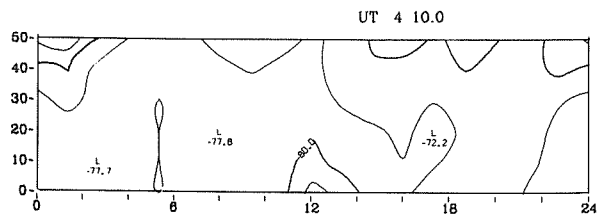
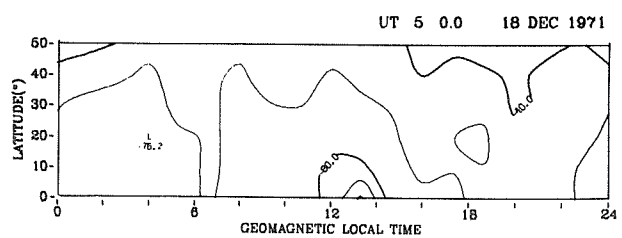
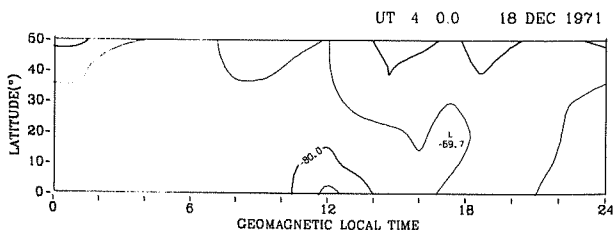
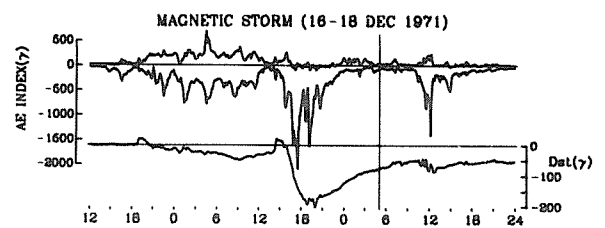
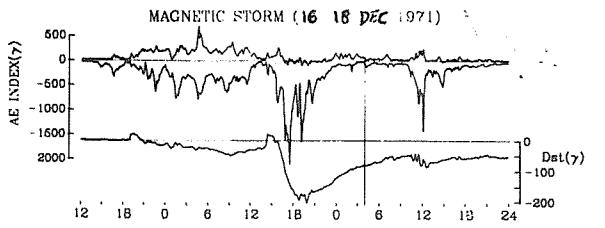


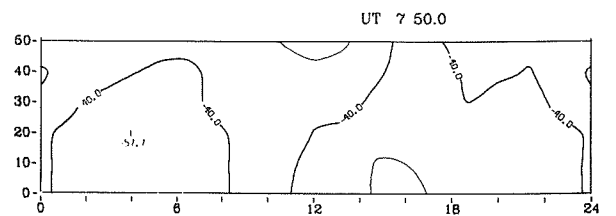
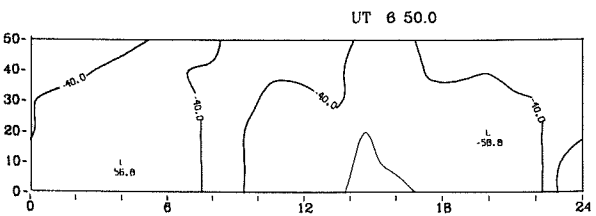
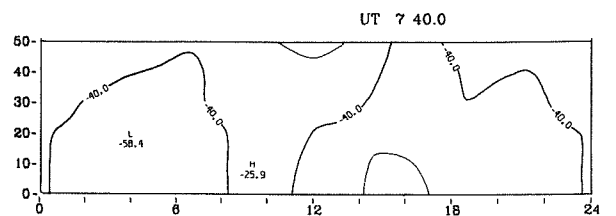
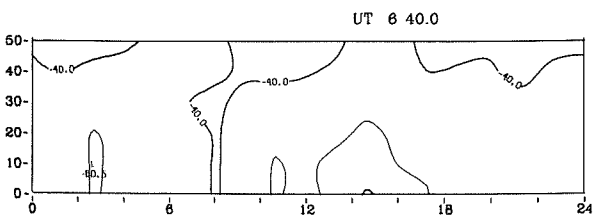
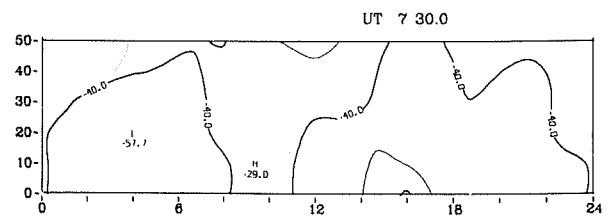
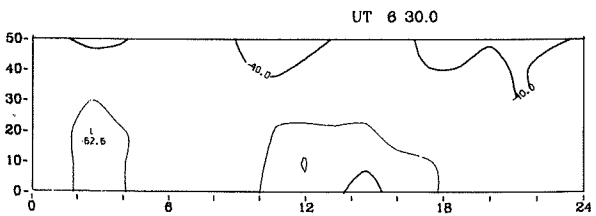
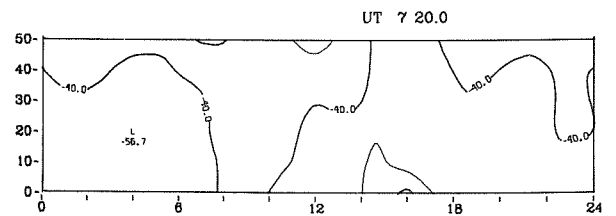
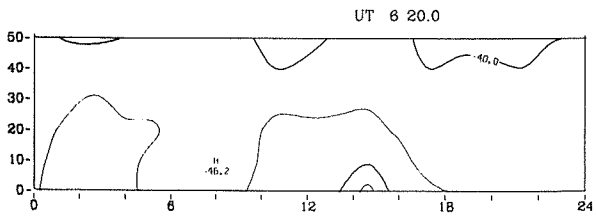
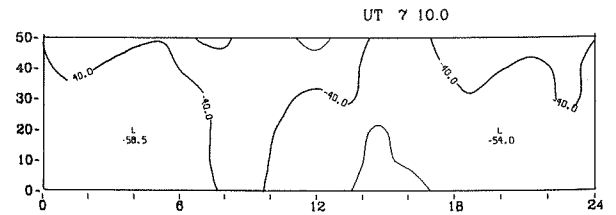
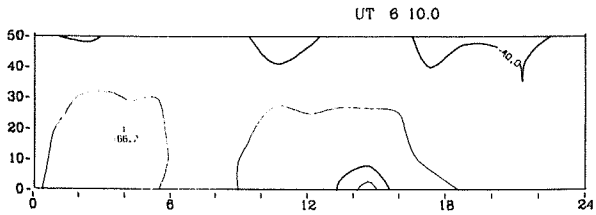
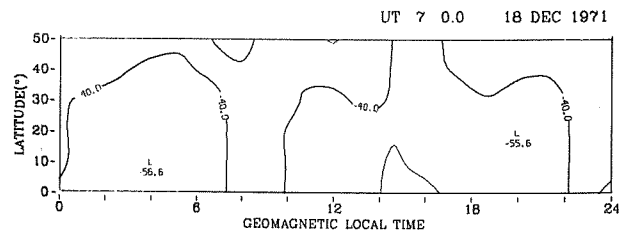
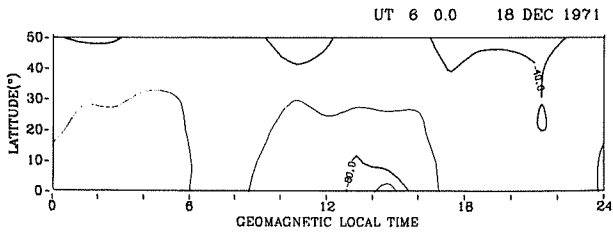
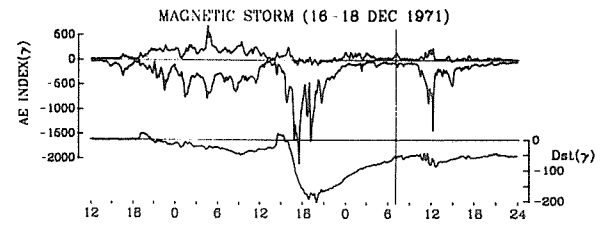
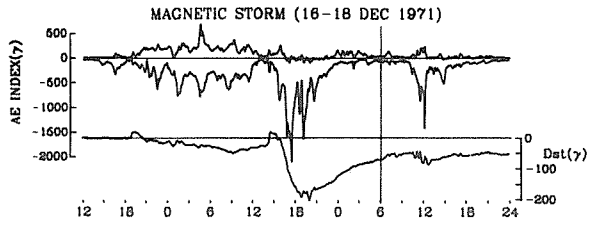


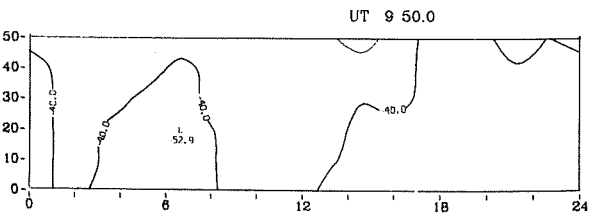
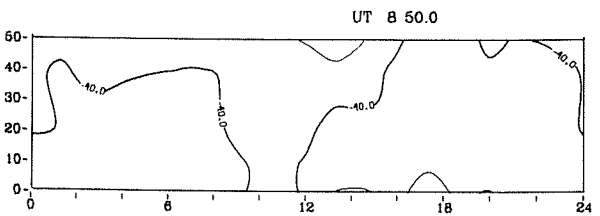
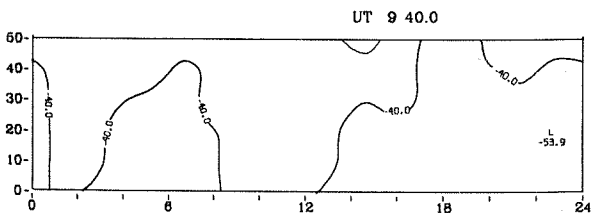
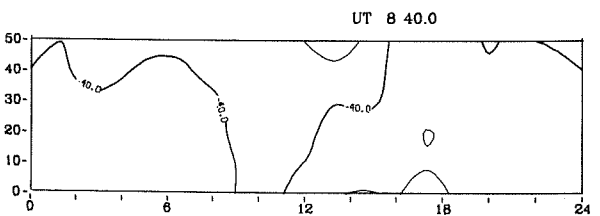
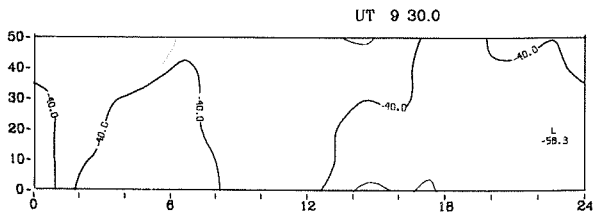
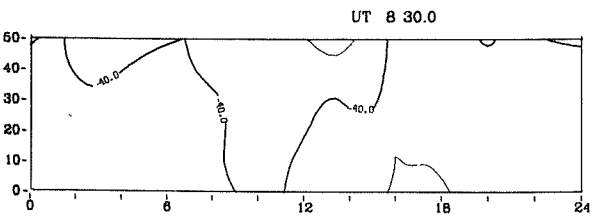
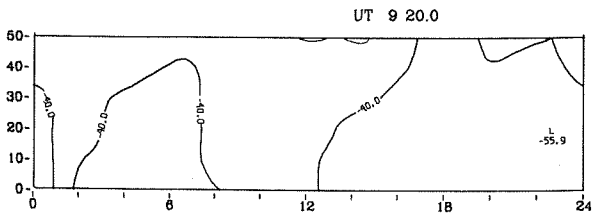
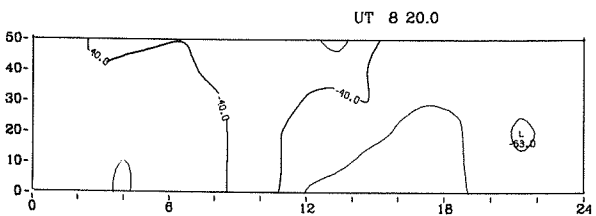
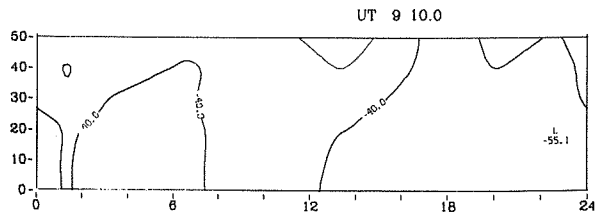
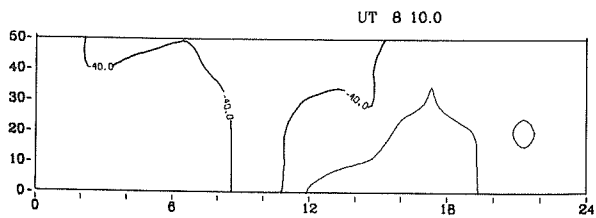
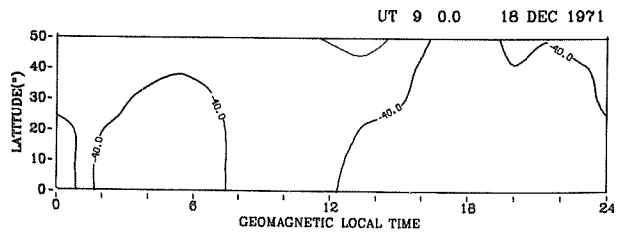
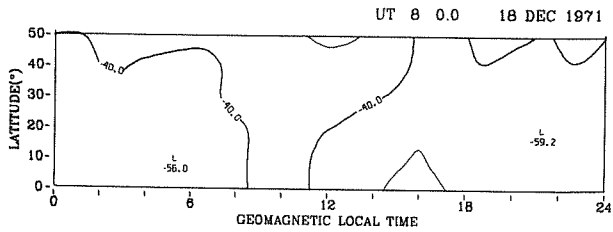
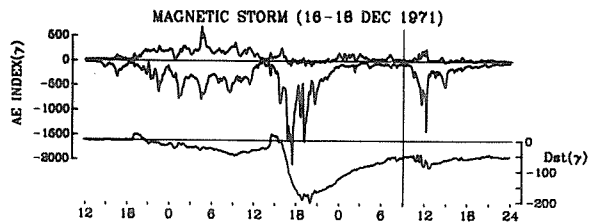
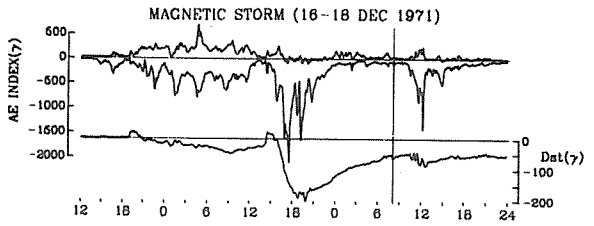


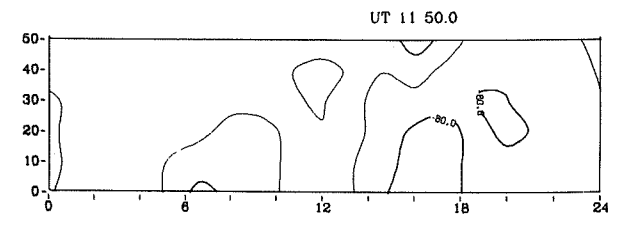
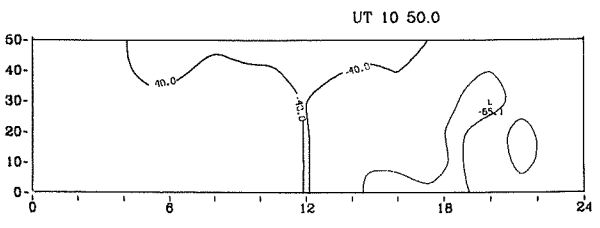
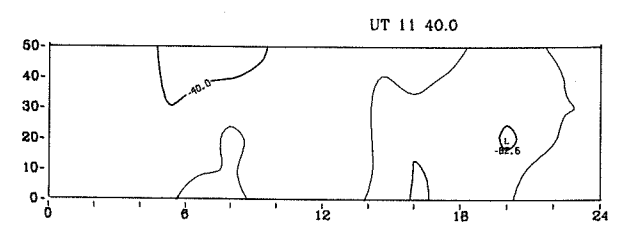
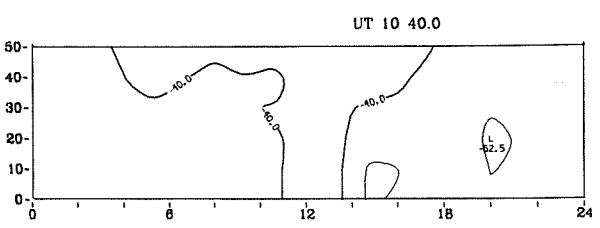
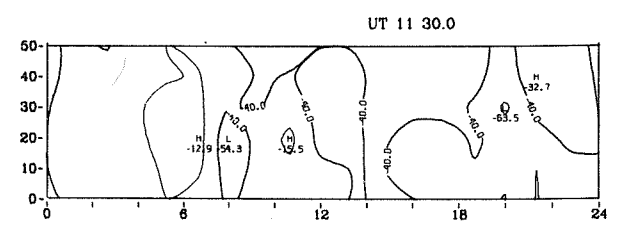
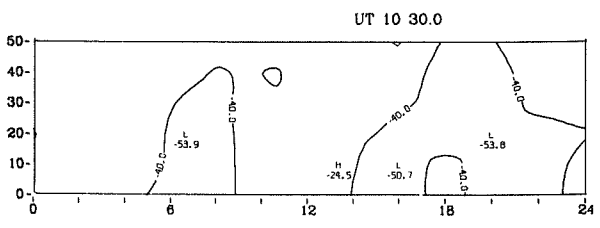
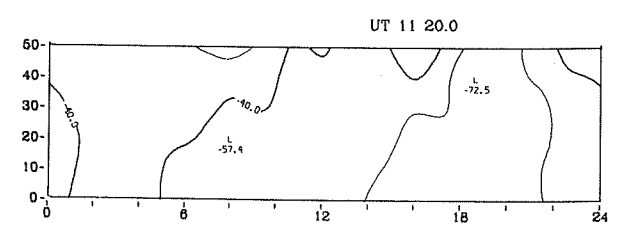
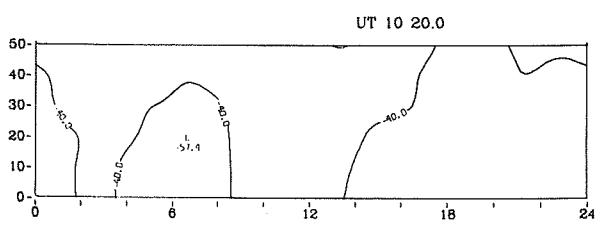
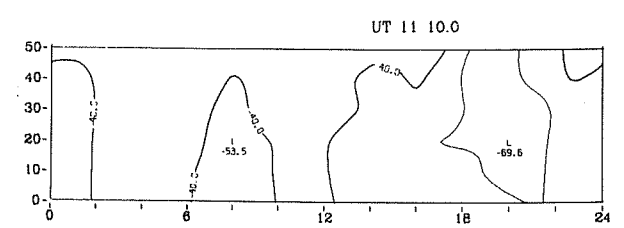
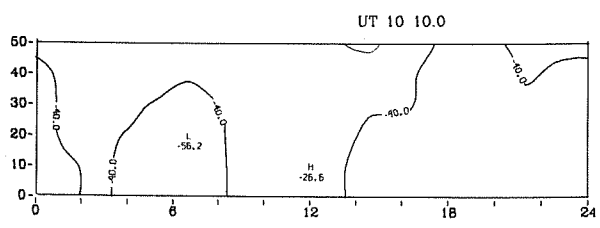
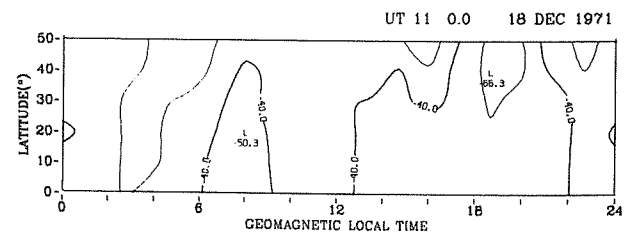
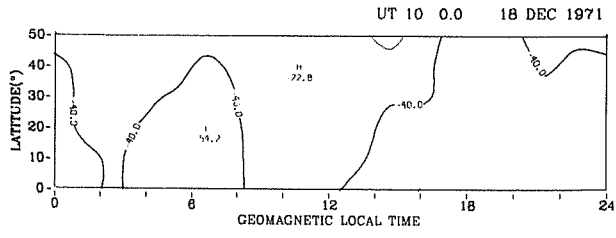
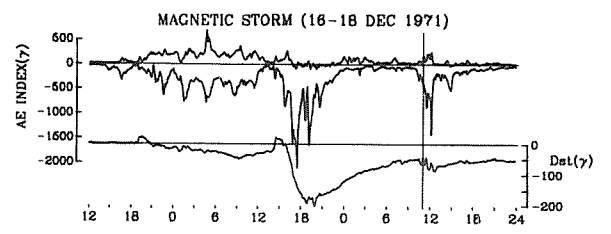
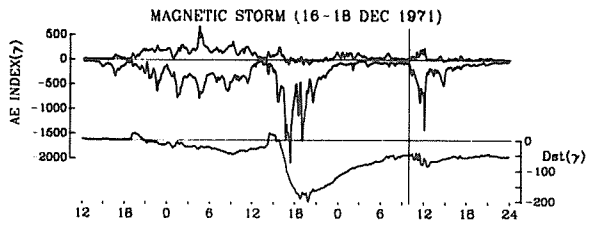


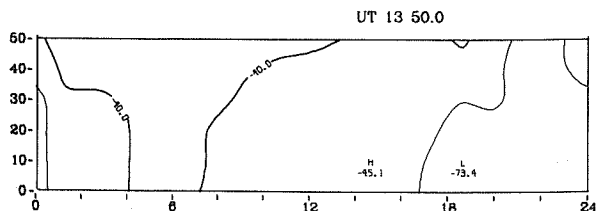
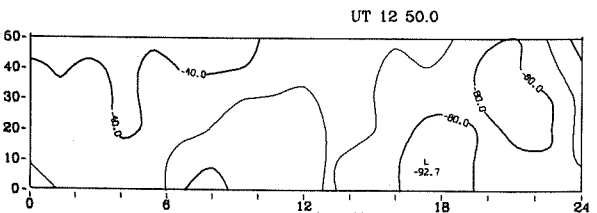
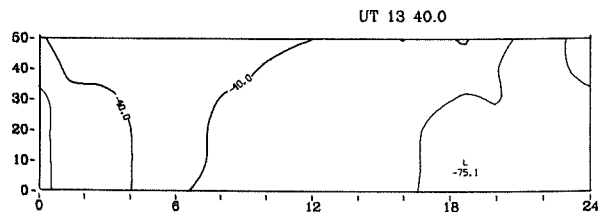
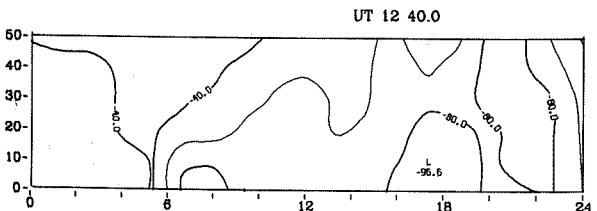
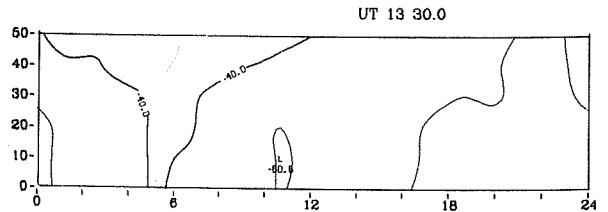
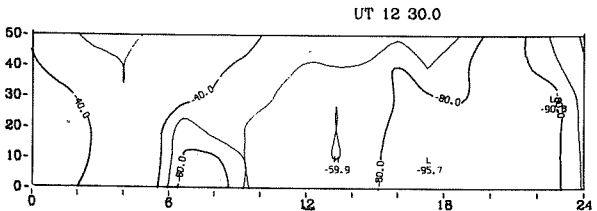
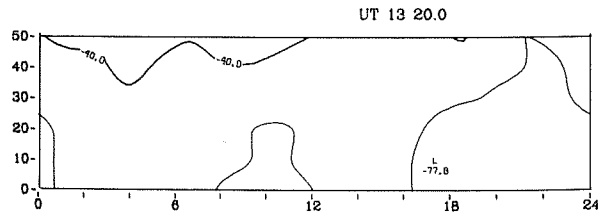
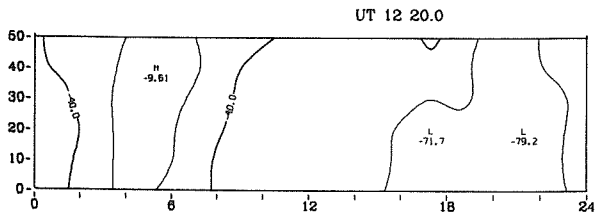
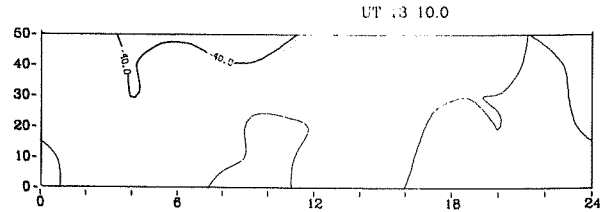
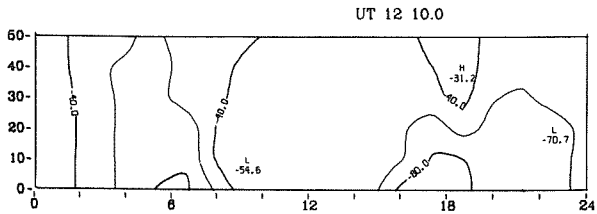
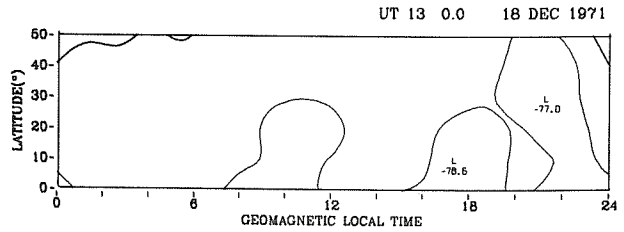
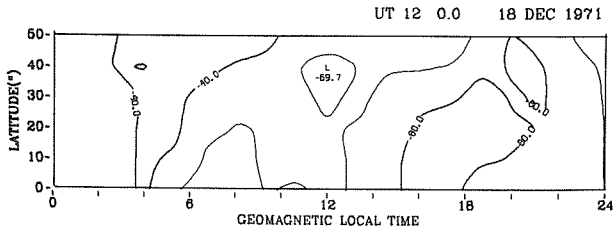
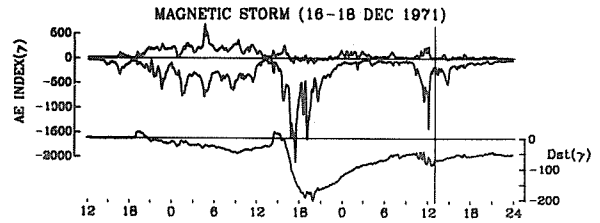
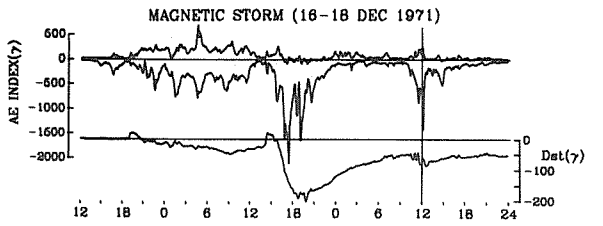


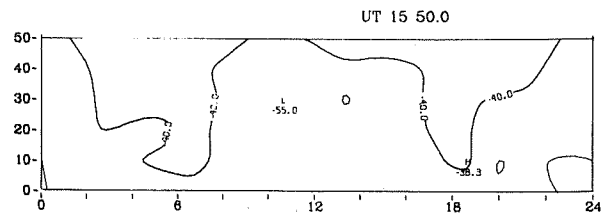
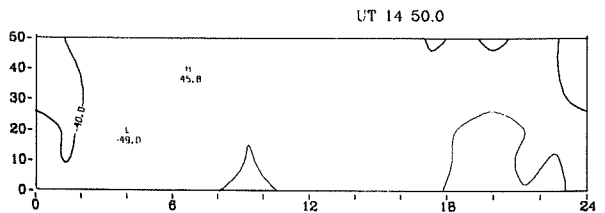
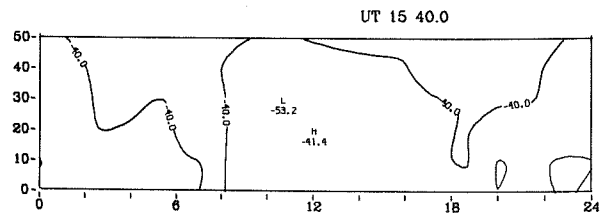
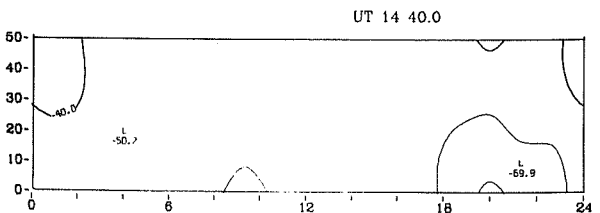
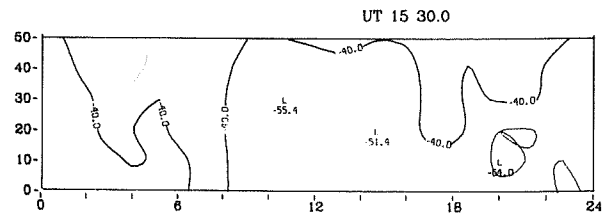
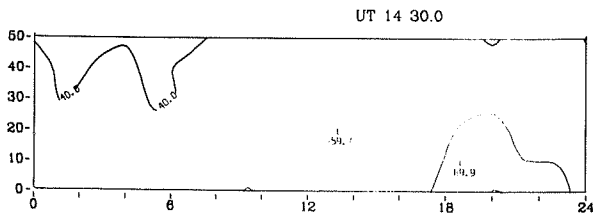
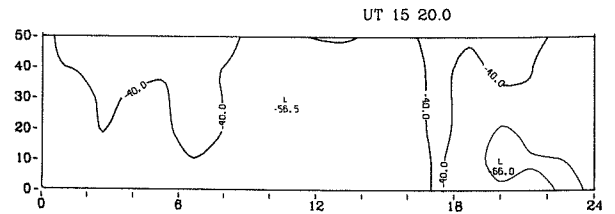
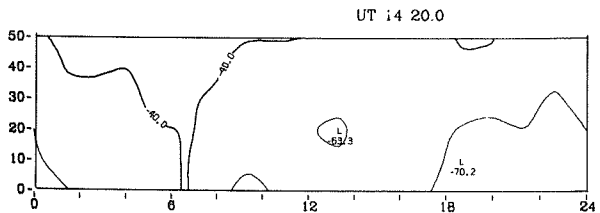
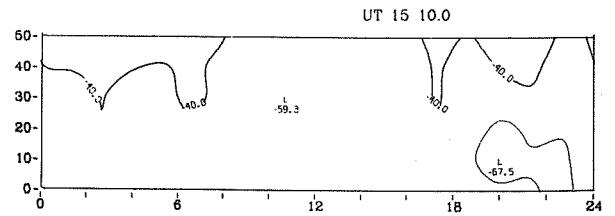
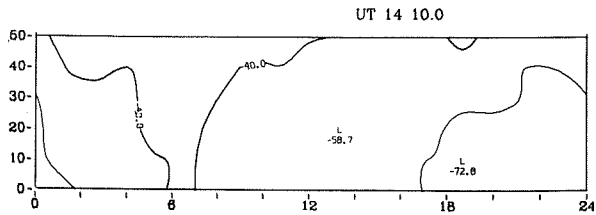
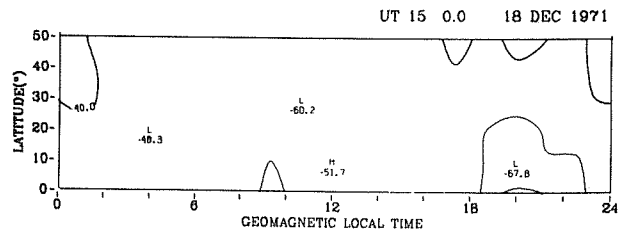
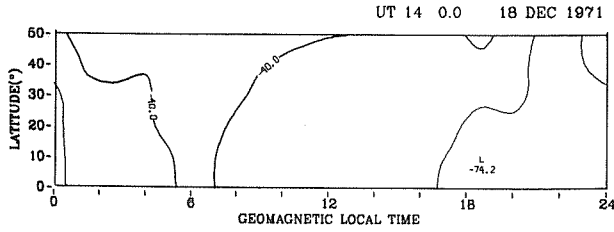
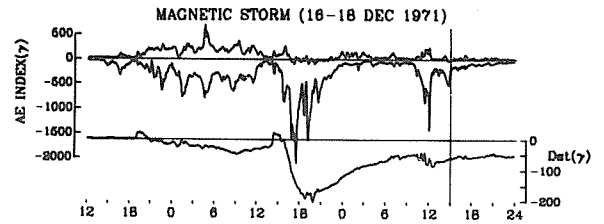
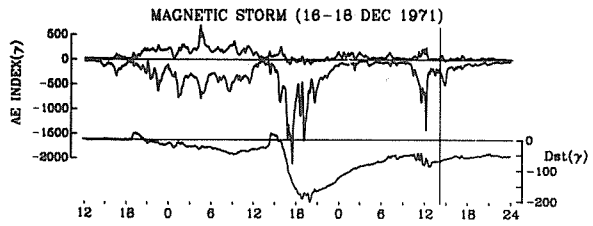


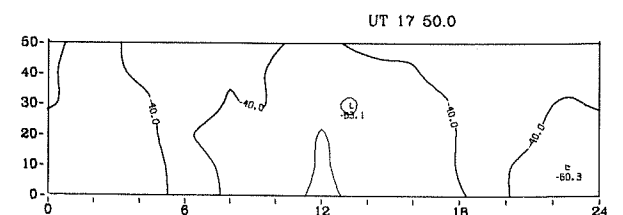
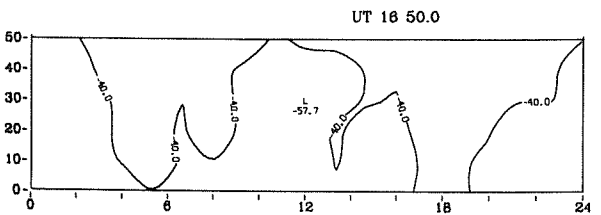
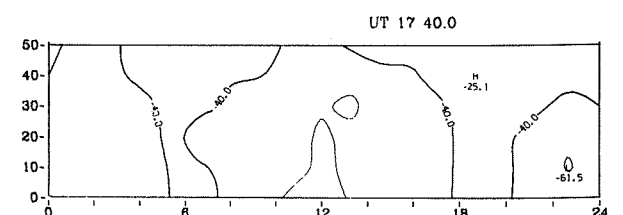
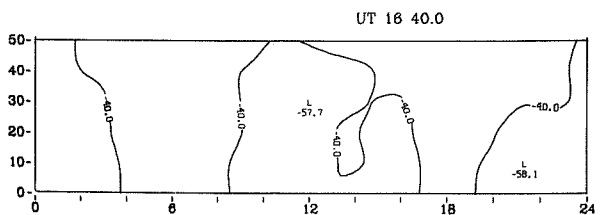
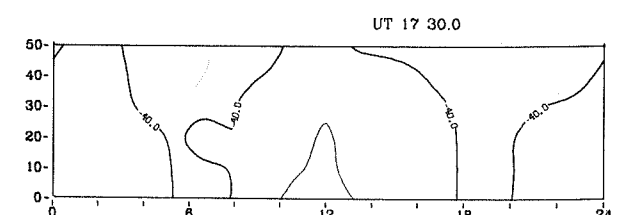
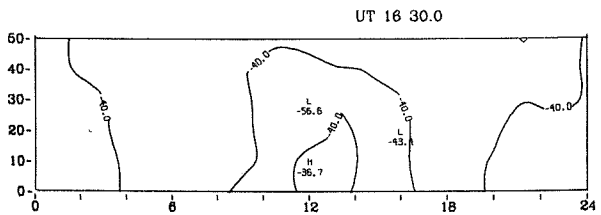
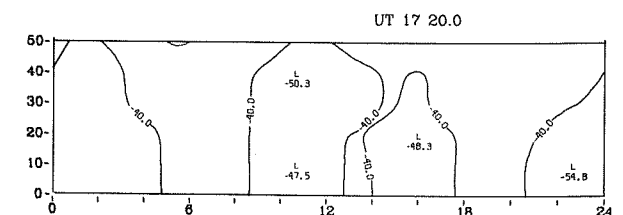
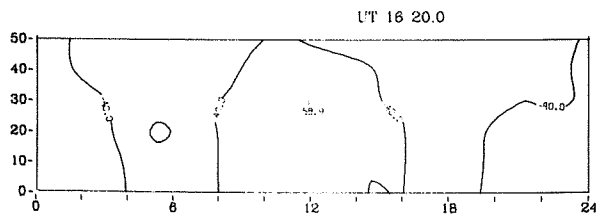
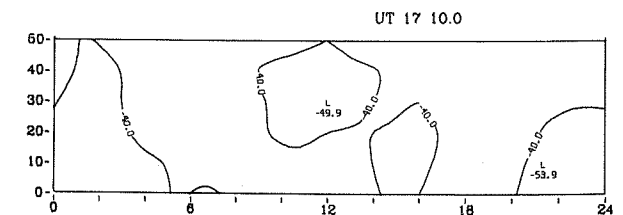
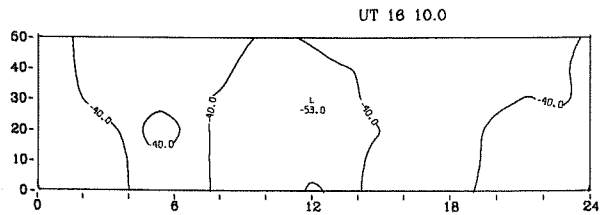
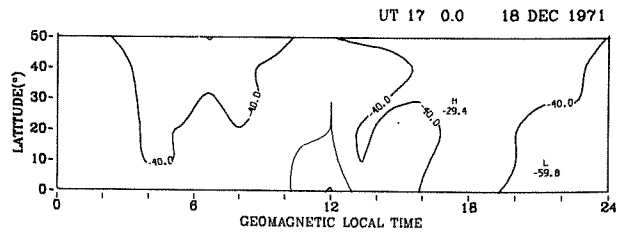
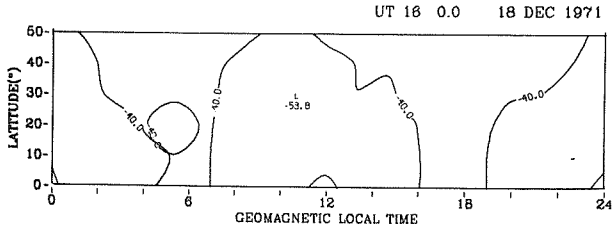
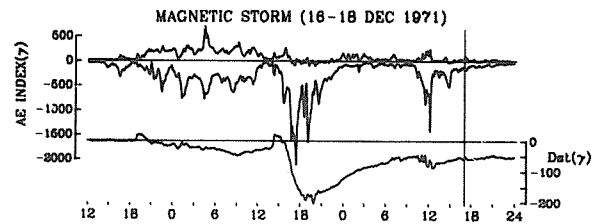
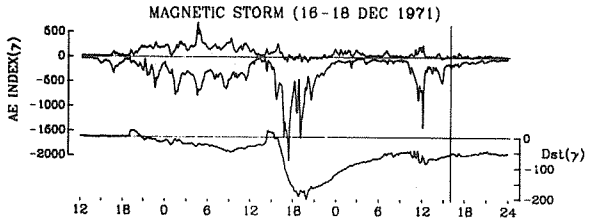


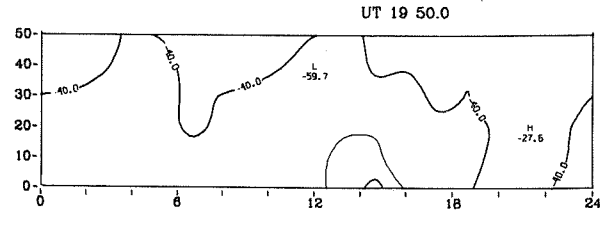
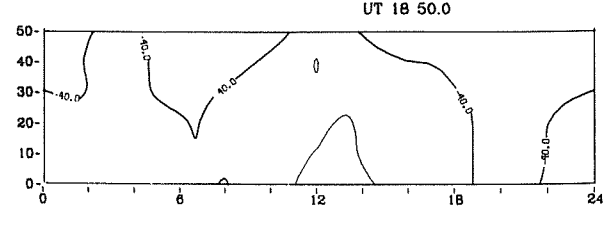
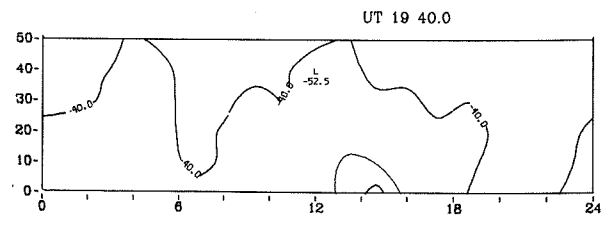
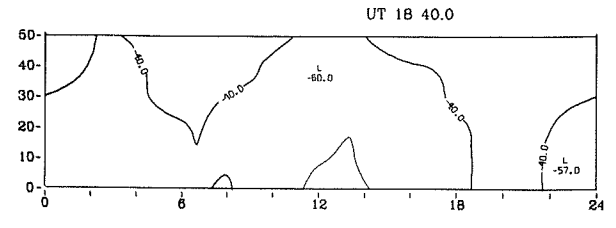
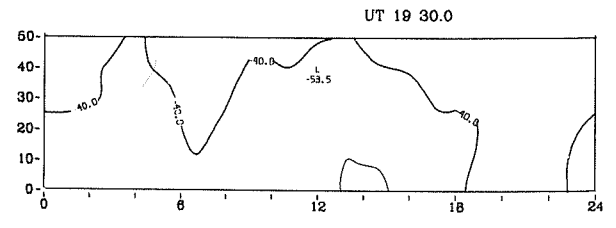
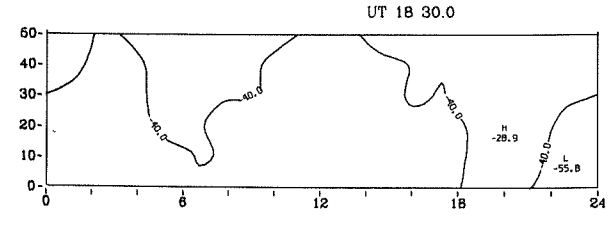
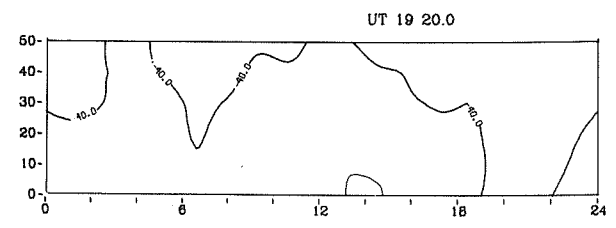
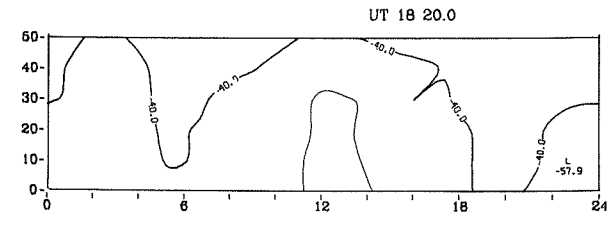
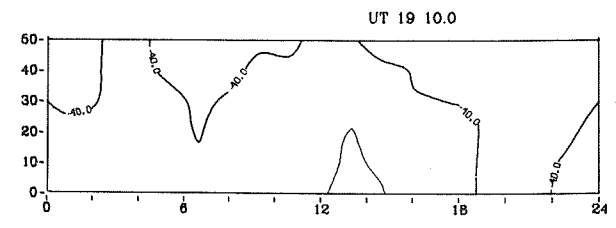
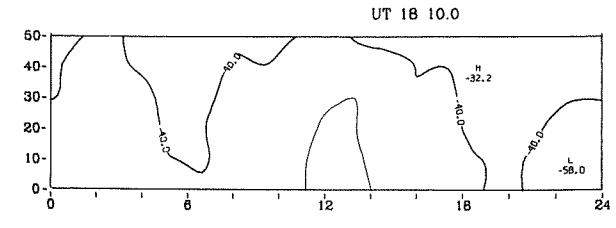
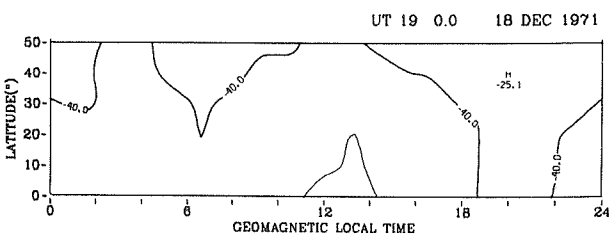
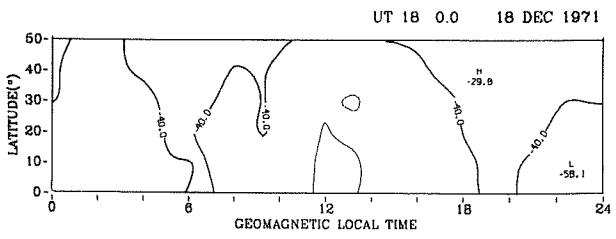
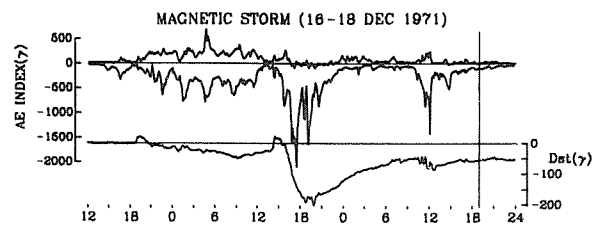
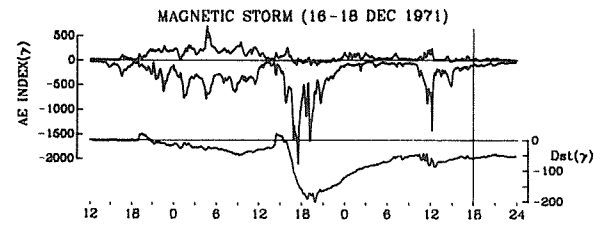


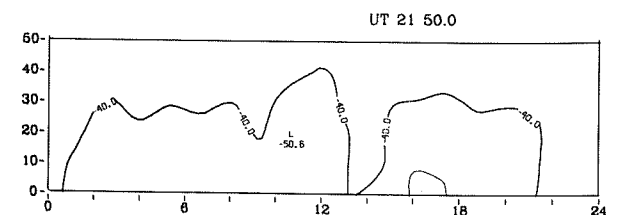
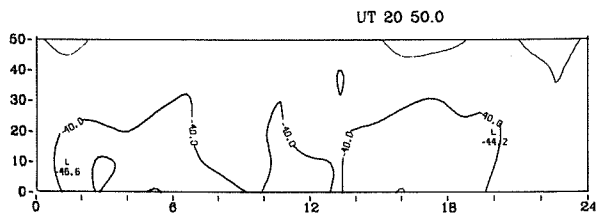
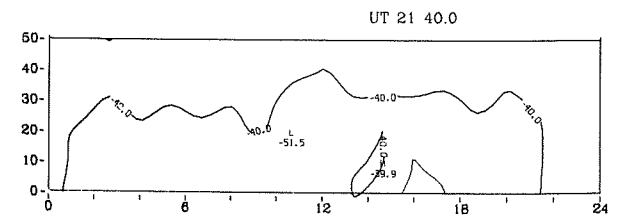
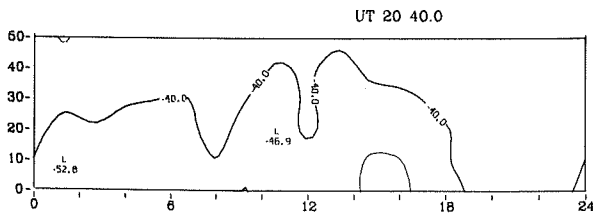
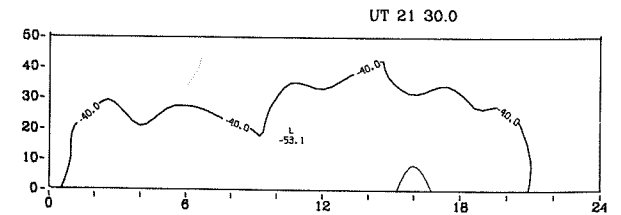
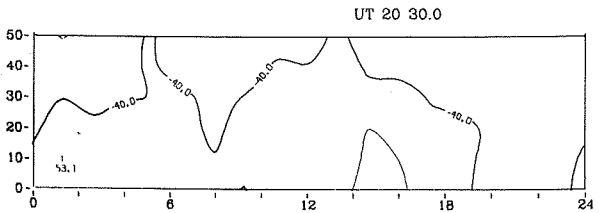
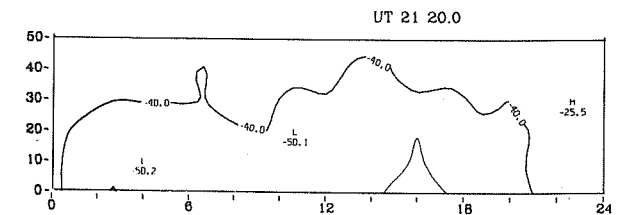
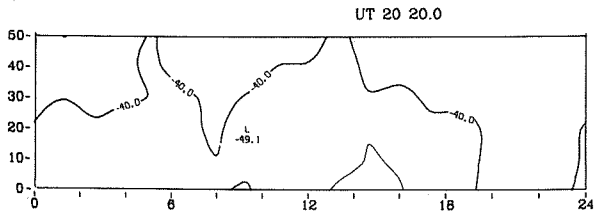
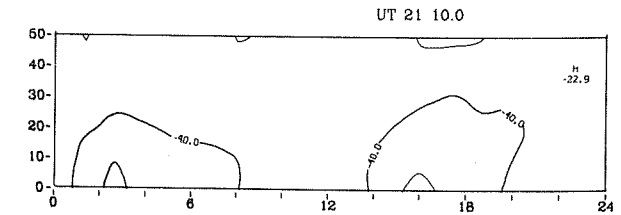
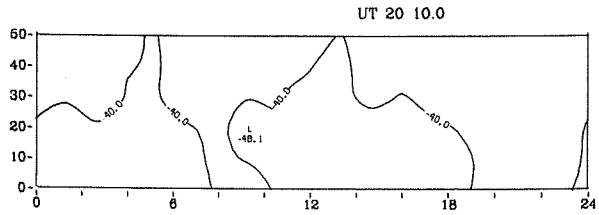
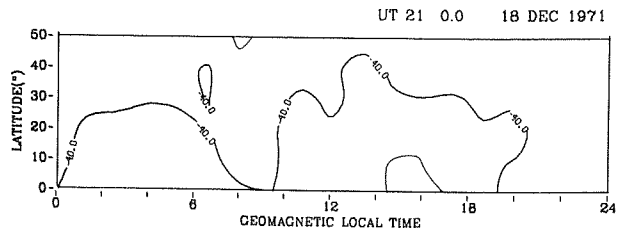
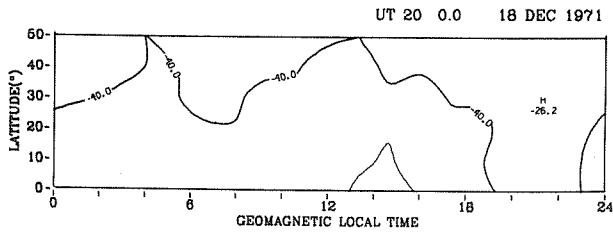
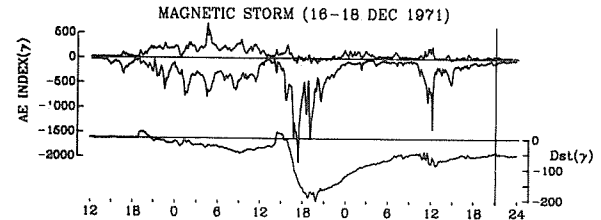
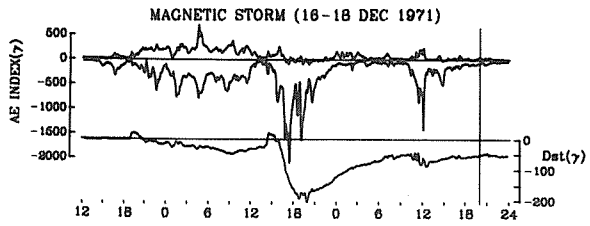


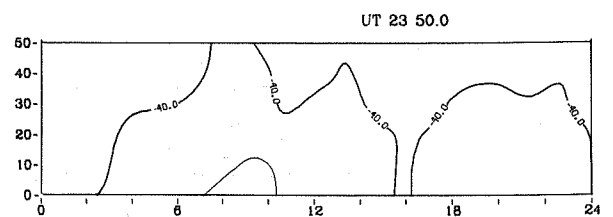
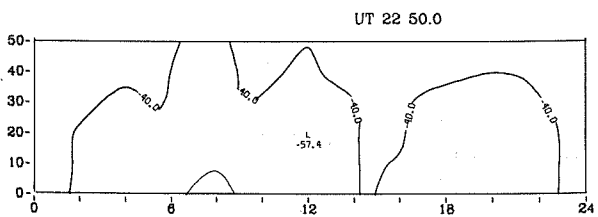
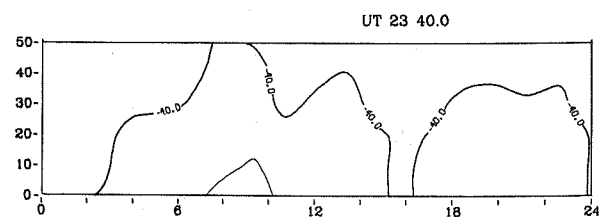
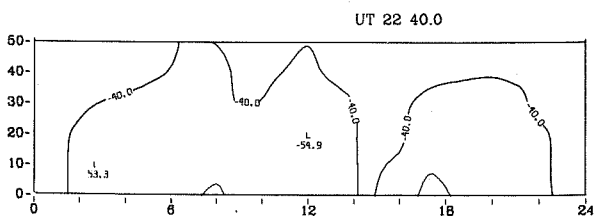
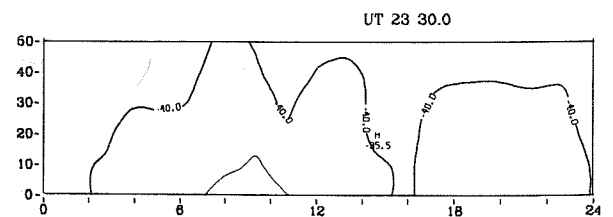
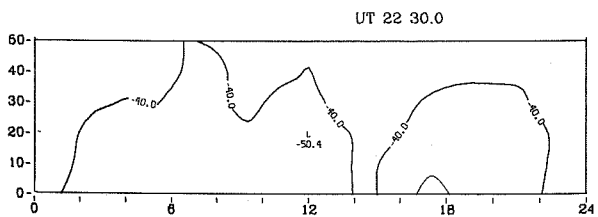
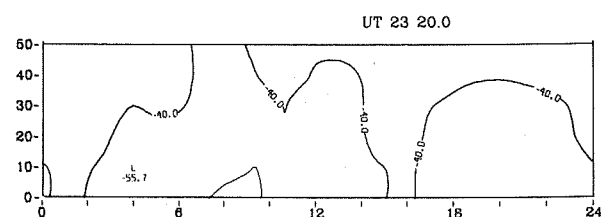
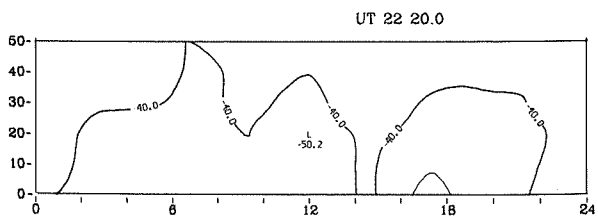
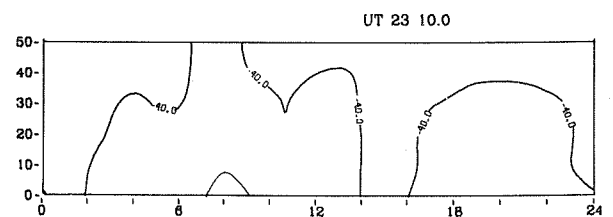
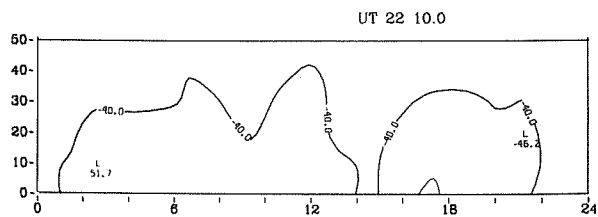
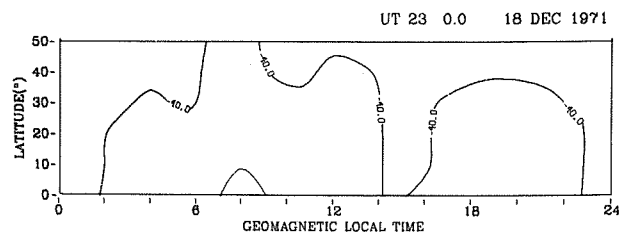
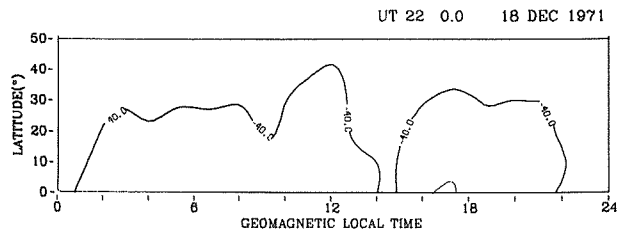
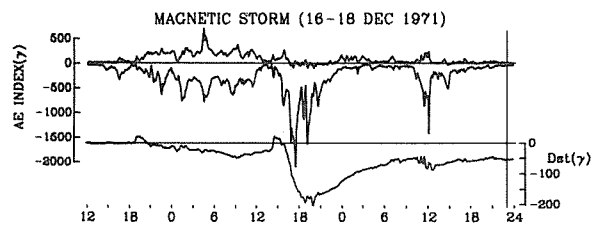
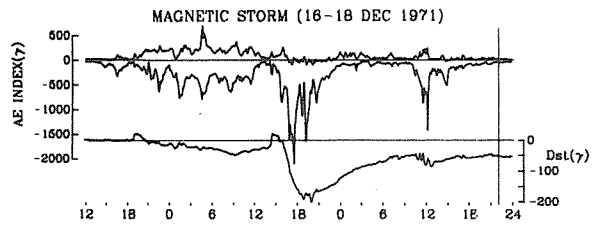












UAG Series of Reports

Prepared by World Data Center A for Solar-Terrestrial Physics, NOAA, Boulder, Colorado, U.S.A.

These reports are for sale through the National Climatic Center, Federal Building, Asheville, NC 28801, Attn: Publications. Subscription price: \$25.20 a year; \$12.00 additional for foreign mailing; single copy price varies. These reports are issued on an irregular basis with 6 to 12 reports being issued each year. Therefore, in some years the single copy rate will be less than the subscription price, and in some years the single copy rate will be more than the subscription price. Make check or money order payable to: Department of Commerce, NOAA.

Some issues are now out of print and are available only on microfiche as indicated. Requests for microfiche should be sent to World Data Center A for Solar-Terrestrial Physics, NOAA, Boulder, Co 80302, with check or money order made payable to Department of Commerce, NOAA.

- UAG-1 "IQSY Night Airglow Data", price \$1.75.
- UAG-2 "A Reevaluation of Solar Flares, 1964-1966", price 30 cents.
- UAG-3 "Observations of Jupiter's Sporadic Radio Emission in the Range 7.6-41 MHz, 6 July 1966 through 8 September 1968", microfiche only, price 45 cents.
- UAG-4 "Abbreviated Calendar Record 1966-1967", price \$1.25.
- UAG-5 "Data on Solar Event of May 23, 1967 and its Geophysical Effects", price 65 cents.

- UAG-6 "International Geophysical Calendars 1957-1969", price 30 cents.
- UAG-7 "Observations of the Solar Electron Corona: February 1964-January 1968", price 15 cents.
- UAG-8 "Data on Solar-Geophysical Activity October 24-November 6, 1968", price (includes Parts 1 and 2) \$1.75.
- UAG-9 "Data on Cosmic Ray Event of November 18, 1968 and Associated Phenomena", price 55 cents.
- UAG-10 "Atlas of Ionograms", price \$1.50.

- UAG-11 "Catalogue of Data on Solar-Terrestrial Physics" (now obsolete).
- UAG-12 "Solar-Geophysical Activity Associated with the Major Geomagnetic Storm of March 8, 1970", price (includes Parts 1-3) \$3.00.
- UAG-13 "Data on the Solar Proton Event of November 2, 1969 through the Geomagnetic Storm of November 8-10, 1969", price 50 cents.
- UAG-14 "An Experimental, Comprehensive Flare Index and Its Derivation for 'Major' Flares, 1955-1969", price 30 cents.
- UAG-15 "Catalogue of Data on Solar-Terrestrial Physics" (now obsolete).

- UAG-16 "Temporal Development of the Geographical Distribution of Auroral Absorption for 30 Substorm Events in each of IQSY (1964-65) and IASY (1969)", price 70 cents.
- UAG-17 "Ionospheric Drift Velocity Measurements at Jicamarca, Peru (July 1967-March 1970)", microfiche only, price 45 cents.
- UAG-18 "A Study of Polar Cap and Auroral Zone Magnetic Variations", price 20 cents.
- UAG-19 "Reevaluation of Solar Flares 1967", price 15 cents.
- UAG-20 "Catalogue of Data on Solar-Terrestrial Physics" (now obsolete).

- UAG-21 "Preliminary Compilation of Data for Retrospective World Interval July 26 - August 14, 1972", price 70 cents.
- UAG-22 "Auroral Electrojet Magnetic Activity Indices (AE) for 1970", price 75 cents.
- UAG-23 "U.R.S.I. Handbook of Ionogram Interpretation and Reduction", price \$1.75.
- UAG-24 "Data on Solar-Geophysical Activity Associated with the Major Ground Level Cosmic Ray Events of 24 January and 1 September 1971", price (includes Parts 1 and 2) \$2.00.
- UAG-25 "Observations of Jupiter's Sporadic Radio Emission in the Range 7.6-41 MHz, 9 September 1968 through 9 December 1971", price 35 cents.

- UAG-26 "Data Compilation for the Magnetospherically Quiet Periods February 19-23 and November 29 - December 3, 1970", price 70 cents.
- UAG-27 "High Speed Streams in the Solar Wind", price 15 cents.
- UAG-28 "Collected Data Reports on August 1972 Solar-Terrestrial Events", price (includes Parts 1-3) \$4.50.
- UAG-29 "Auroral Electrojet Magnetic Activity Indices AE (11) for 1968", price 75 cents.
- UAG-30 "Catalogue of Data on Solar-Terrestrial Physics", price \$1.75.

- UAG-31 "Auroral Electrojet Magnetic Activity Indices AE (11) for 1969", by Joe Haskell Allen, Carl C. Abston and Leslie D. Morris, National Geophysical and Solar-Terrestrial Data Center, Environmental Data Service, February 1974, 142 pages, price 75 cents.

- UAG-32 "Synoptic Radio Maps of the Sun at 3.3 mm for the Years 1967-1969", by Earle B. Mayfield and Kennon P. White III, San Fernando Observatory, Space Physics Laboratory and Fred I. Shimabukuro, Electronics Research Laboratory, Laboratory Operations, The Aerospace Corporation, El Segundo, California, 90245, April 1974, 26 pages, price 35 cents.

- UAG-33 "Auroral Electrojet Magnetic Activity Indices AE(10) for 1967", by Joe Haskell Allen, Carl C. Abston and Leslie D. Morris, National Geophysical and Solar-Terrestrial Data Center, Environmental Data Service, May 1974, 142 pages, price 75 cents.

- UAG-34 "Absorption Data for the IGY/IGC and IQSY", compiled and edited by A. H. Shapley, National Geophysical and Solar-Terrestrial Data Center, NOAA, Boulder, Colorado, U.S.A., W. R. Piggott, Science Research Council, Slough, U.K., and K. Rawer, Arbeitsgruppe für Physikalische Weltraumforschung, Freiburg, G.F.R., June 1974, 381 pages, price \$2.00.

- UAG-35 "Catalogue of Digital Geomagnetic Variation Data at World Data Center A for Solar-Terrestrial Physics", prepared by Environmental Data Service, NOAA, Boulder, Colorado, July 1974, 20 pages, price 20 cents.
- UAG-36 "An Atlas of Extreme Ultraviolet Flashes of Solar Flares Observed Via Sudden Frequency Deviations During the ATM-SKYLAB Missions", by R. F. Donnelly and E. L. Berger, NOAA Space Environment Laboratory, Lt. J. D. Busman, NOAA Commissioned Corps, B. Henson, NASA Marshall Space Flight Center, T. B. Jones, University of Leicester, UK, G. M. Lerfald, NOAA Wave Propagation Laboratory, K. Najita, University of Hawaii, W. M. Retallack, NOAA Space Environment Laboratory, and W. J. Wagner, Sacramento Peak Observatory, October 1974, 95 pages, price 55 cents.
- UAG-37 "Auroral Electrojet Magnetic Activity Indices AE(10) for 1966", by Joe Haskell Allen, Carl C. Abston and Leslie D. Morris, National Geophysical and Solar-Terrestrial Data Center, Environmental Data Service, December 1974, 142 pages, price 75 cents.
- UAG-38 "Master Station List for Solar-Terrestrial Physics Data at WDC-A for Solar-Terrestrial Physics", by R. W. Buhmann, World Data Center A for Solar-Terrestrial Physics, Juan D. Roederer, University of Denver, Denver, Colorado, M. A. Shea and D. F. Smart, A.F.C.R.L., Hanscom AFB, Massachusetts, December 1974, 110 pages, price \$1.60.
- UAG-39 "Auroral Electrojet Magnetic Activity Indices AE(11) for 1971", by Joe Haskell Allen, Carl C. Abston and Leslie D. Morris, National Geophysical and Solar-Terrestrial Data Center, Environmental Data Service, February 1975, 144 pages, price \$2.05.
- UAG-40 "H-Alpha Synoptic Charts of Solar Activity For the Period of Skylab Observations, May, 1973-March, 1974", by Patrick S. McIntosh, NOAA Environmental Research Laboratory, February 1975, 32 pages, price 56 cents.
- UAG-41 "H-Alpha Synoptic Charts of Solar Activity During the First Year of Solar Cycle 20 October, 1964 - August, 1965", by Patrick S. McIntosh, NOAA Environmental Research Laboratory, and Jerome T. Nolte, American Science and Engineering, Cambridge, Massachusetts, March 1975, 25 pages, price 48 cents.
- UAG-42 "Observations of Jupiter's Sporadic Radio Emission in the Range 7.6-80 MHz 10 December 1971 through 21 March 1975", by James W. Warwick, George A. Dulk, and Anthony C. Riddle, Department of Astro-Geophysics, University of Colorado, Boulder, Colorado 80302, April 1975, 49 pages, price \$1.15.
- UAG-43 "Catalog of Observation Times of Ground-Based Skylab-Coordinated Solar Observing Programs", compiled by Helen E. Coffey, World Data Center A for Solar-Terrestrial Physics, May 1975, 159 pages, price \$3.00.
- UAG-44 "Synoptic Maps of Solar 9.1 cm Microwave Emission from June 1962 to August 1973", by Werner Graf and Ronald N. Bracewell, Radio Astronomy Institute, Stanford University, Stanford, California 94305, May 1975, 183 pages, price \$2.55.
- UAG-45 "Auroral Electrojet Magnetic Activity Indices AE(11) for 1972", by Joe Haskell Allen, Carl C. Abston and Leslie D. Morris, National Geophysical and Solar-Terrestrial Data Center, Environmental Data Service, May 1975, 144 pages, price \$2.10.
- UAG-46 "Interplanetary Magnetic Field Data 1963-1974", by Joseph H. King, National Space Science Data Center, NASA Goddard Space Flight Center, Greenbelt, Maryland 20771, June 1975, 382 pages, price \$2.95.
- UAG-47 "Auroral Electrojet Magnetic Activity Indices AE(11) for 1973", by Joe Haskell Allen, Carl C. Abston and Leslie D. Morris, National Geophysical and Solar-Terrestrial Data Center, Environmental Data Service, June 1975, 144 pages, price \$2.10.
- UAG-48A "Synoptic Observations of the Solar Corona during Carrington Rotations 1580-1596 (11 October 1971 - 15 January 1973)", [Reissue with quality images] by R. A. Howard, M. J. Koomen, D. J. Michels, R. Tousey, C. R. Detwiler, D. E. Roberts, R. T. Seal and J. D. Whitney, E. O. Hulbert Center for Space Research, NRL, Washington, D. C. 20375 and R. T. and S. F. Hansen, C. J. Garcia and E. Yasukawa, High Altitude Observatory, NCAR, Boulder, Colorado 80303, February 1976, 200 pages.
- UAG-49 "Catalog of Standard Geomagnetic Variation Data", prepared by Environmental Data Service, NOAA, Boulder, Colorado, August 1975, 125 pages, price \$1.85.
- UAG-50 "High-Latitude Supplement to the URSI Handbook on Ionogram Interpretation and Reduction", by W. R. Piggott, British Antarctic Survey, c/o SRC, Appleton Laboratory, Ditton Park, Slough, England, October 1975, 292 pages, price \$4.00.
- UAG-51 "Synoptic Maps of Solar Coronal Hole Boundaries Derived from He II 304Å Spectroheliograms from the Manned Skylab Missions", by J. D. Bohlin and D. M. Rubenstein, E. O. Hulbert Center for Space Research, Naval Research Laboratory, Washington, D. C. 20375 U.S.A., November 1975, 30 pages, price 54 cents.
- UAG-52 "Experimental Comprehensive Solar Flare Indices for Certain Flares, 1970-1974", compiled by Helen W. Dodson and E. Ruth Hedeman, McMath-Hulbert Observatory, The University of Michigan, 895 Lake Angelus Road North, Pontiac, Michigan 48055 U.S.A., November 1975, 27 pages, price 60 cents.

- UAG-53 "Description and Catalog of Ionospheric F-Region Data, Jicamarca Radar Observatory (November 1966 - April 1969)", by W. L. Clark and T. E. Van Zandt, Aeronomy Laboratory, NOAA, Boulder, Colorado 80302 and J. P. McClure, University of Texas at Dallas, Dallas, Texas 75230, April 1976, 10 pages.
- UAG-54 "Catalog of Ionosphere Vertical Soundings Data", prepared by Environmental Data Service, NOAA, Boulder, Colorado 80302, April 1976, 130 pages.
- UAG-55 "Equivalent Ionospheric Current Representations by a New Method, Illustrated for 8-9 November 1969 Magnetic Disturbances", by Y. Kamide, Cooperative Institute for Research in Environmental Sciences, University of Colorado, Boulder, Colorado 80302 and Geophysical Institute, University of Alaska, Fairbanks, Alaska 99701, H. W. Kroehl, Data Studies Division, NOAA/EDS/NGSDC, Boulder, Colorado 80302, M. Kanamitsu, Advanced Study Program, National Center for Atmospheric Research, Boulder, Colorado 80303, J. H. Allen, Data Studies Division, NOAA/EDS/NGSDC, Boulder, Colorado 80302, and S.-I. Akasofu, Geophysical Institute, University of Alaska, Fairbanks, Alaska 99701, April 1976, 91 pages.
- UAG-56 "Iso-intensity Contours of Ground Magnetic H Perturbations for the December 16-18, 1971 Geomagnetic Storm", by Y. Kamide, Cooperative Institute for Research in Environmental Sciences, University of Colorado, Boulder, Colorado 80302 and Geophysical Institute, University of Alaska, Fairbanks, Alaska 99701 (currently Guest worker at Data Studies Division, NOAA/EDS/NGSDC, Boulder, Colorado 80302), April 1976, 37 pages.